

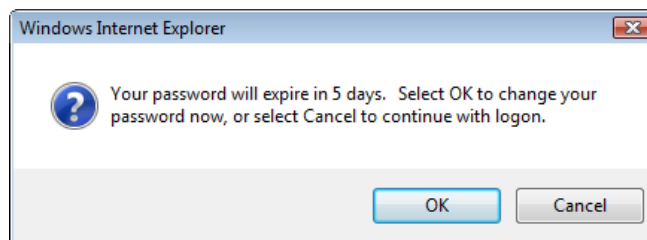


Formulas Online

Change Password

Passwords expire every 90 days and you will be required to change your password before expiration. You can change your password at any time through the Password Change Utility. If you login to Formulas Online when your password is due to expire, a confirmation message box displays reminding you to change your password through the Password Change Utility. See Figure 1. You may select the **Cancel** button to close the confirmation message box and proceed to your home page or you may select the **OK** button and follow the steps in [Change Your Password](#) to change your password through the Password Change Utility.

Figure 1: Change Password Reminder Confirmation



If your password expires before you are able to change your password, an error message displays when you attempt to login to Formulas Online. See Figure 2.

Figure 2: Expired Password Error Message

Publicly available services:

- To view publicly available information about COLAs (both those filed via paper form and online), you may visit the [Public COLA Registry](#).
- View the TTB Online [Frequently Asked Questions \(FAQ\)](#) page on the TTB Internet site.

Services requiring registration and logon:

Login Error: Your password has expired. If you are an Industry Member, please use the "Expired password?" link to create a new password.

User Name: [Expired password ?](#)

Password: [New or forgotten password ?](#)

Logon to:

NOTE TO COLAS ONLINE USERS: If you have not previously selected and answered the user authentication questions that are a part of your COLAs Online user profile information, you will be required to do so when you log in. These authentication questions allow you to set your own password, even if you have forgotten it, without contacting the TTB Help Desk for assistance. This is required of you only one time.

[Register for TTB Online](#). Need help on [how to register](#) ?

[Need Help Logging On and Using TTB Online](#) ?

If you are using Internet Explorer 8.0, [click here](#) for more information on browser Compatibility.

[Privacy Policy](#) [Privacy Impact Assessment](#)

UNITED STATES
DEPARTMENT OF
THE TREASURY

While the Alcohol and Tobacco Tax and Trade Bureau (TTB) makes every effort to provide complete information, data such as company names, addresses, permit numbers, and other data provided in the registry may change over time. TTB makes no warranty, expressed or implied, and assumes no legal liability or responsibility as to the currency, reliability or completeness of furnished data. TTB welcomes suggestions on how to improve our Public COLA Registry. Please contact us via email at tbt.fonl@ttb.gov.

If you have difficulty accessing any information in the site due to a disability, please contact us via email (tbt.fonl@ttb.gov) and we will do our best to make the information available to you.

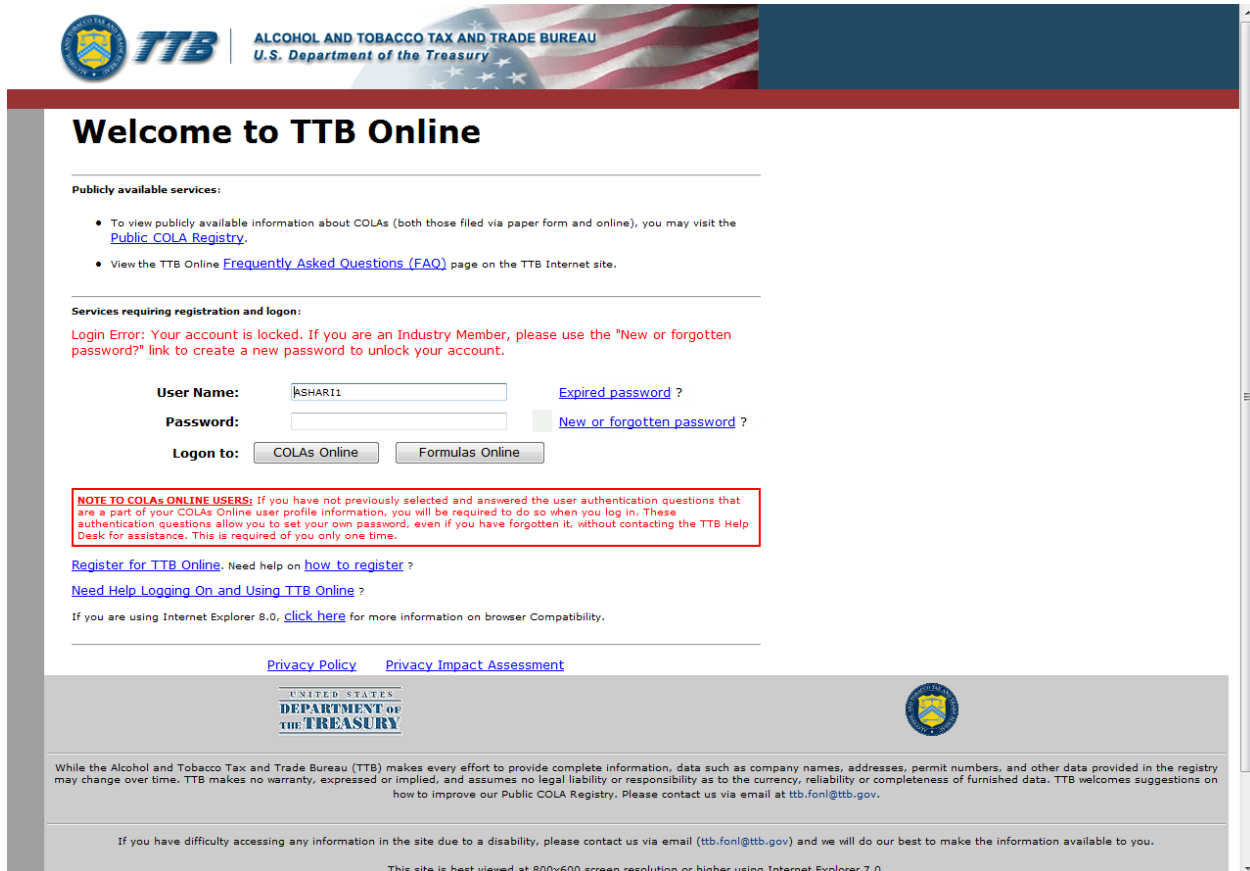
This site is best viewed at 800x600 screen resolution or higher using Internet Explorer 7.0.

Change Password

You may follow the steps in [Reset Your Expired Password](#) to reset your expired password through the Password Change Utility.

If you attempt to login to Formulas Online multiple times with an invalid user name/password combination, you will lock your account. An error message displays stating your account is locked. See Figure 3.

Figure 3: Locked Account Error Message



The screenshot shows the TTB Online login page. At the top left is the TTB logo and the text "ALCOHOL AND TOBACCO TAX AND TRADE BUREAU U.S. Department of the Treasury". The main heading is "Welcome to TTB Online". Below this, there are sections for "Publicly available services" and "Services requiring registration and login". The "Services requiring registration and login" section contains a red error message: "Login Error: Your account is locked. If you are an Industry Member, please use the 'New or forgotten password?' link to create a new password to unlock your account." Below the error message is a login form with fields for "User Name:" (containing "ASHART1"), "Password:", and "Logon to:" (with buttons for "COLAs Online" and "Formulas Online"). There are links for "Expired password?" and "New or forgotten password?". A red-bordered box contains a note: "NOTE TO COLAs ONLINE USERS: If you have not previously selected and answered the user authentication questions that are a part of your COLAs Online user profile information, you will be required to do so when you log in. These authentication questions allow you to set your own password, even if you have forgotten it, without contacting the TTB Help Desk for assistance. This is required of you only one time." At the bottom, there are links for "Register for TTB Online", "Need Help Logging On and Using TTB Online?", and "Privacy Policy / Privacy Impact Assessment". The footer includes the U.S. Department of the Treasury logo and a disclaimer: "While the Alcohol and Tobacco Tax and Trade Bureau (TTB) makes every effort to provide complete information, data such as company names, addresses, permit numbers, and other data provided in the registry may change over time. TTB makes no warranty, expressed or implied, and assumes no legal liability or responsibility as to the currency, reliability or completeness of furnished data. TTB welcomes suggestions on how to improve our Public COLA Registry. Please contact us via email at ttb.foni@ttb.gov." A note at the bottom states: "If you have difficulty accessing any information in the site due to a disability, please contact us via email (ttb.foni@ttb.gov) and we will do our best to make the information available to you." The page also includes a resolution note: "This site is best viewed at 800x600 screen resolution or higher using Internet Explorer 7.0."

You may reset your password to unlock your account. Follow the steps in [Unlock Your Locked Account](#) to unlock your account by resetting your password through the Password Change Utility.

If you have simply forgotten your password, but it is not expired, you may follow the steps in [Reset Your Forgotten Password](#) to reset your forgotten password through the Password Change Utility.

After one year of inactivity, your user ID will also be deleted and you will need to re-register if you wish to resume using Formulas Online. Follow the steps in [Create a New User Registration](#) to re-register.

Change Password

Change Your Password

Follow these steps to change a Formulas Online system password through the Password Change Utility:

1. Select the [My Profile](#) link from the main navigation banner. The My Profile page displays. See Figure 4 and Figure 5.

Figure 4: Change Password – User Profile (Top)

The screenshot displays the 'User Profile' page in the Formulas Online system. The page header includes the TTB logo, the text 'ALCOHOL AND TOBACCO TAX AND TRADE BUREAU U.S. Department of the Treasury', and the 'Formulas Online' title. Navigation links for 'COLAS', 'Home', 'Text Menu', 'My Profile', 'Help', 'Contact Us', and 'Log Off' are present. A search bar and 'Submissions' dropdown are also visible.

The main content area is titled 'User Profile' and is divided into three sections:

- Personal Information:** This section contains various input fields for user details. Fields include First Name (Jane), M. I. (empty), Last Name (Smith), Employer (POM PRODUCTS), Title (Auditor), Label Rep. ID (empty), Phone Number (2024532000), Fax Number (empty), Address Format (USPS Domestic), Address Line 1 (4444 Orchard Lane), Address Line 2 (empty), City (Saint Petersburg), State (FL), and Zip (33738). A 'Change Password' link is located in the top right corner of this section.
- Business E-mail Addresses:** This section prompts the user to 'Select an email address as your primary email address.' It features a table with columns for 'PRIMARY' and 'E-MAIL ADDRESS'. The first row shows 'Jane.Smith@ttb.gov' as the selected primary email address.
- Authentication Questions:** This section asks the user to 'Select three questions and provide answers. These answers will enable you to create your initial password, and will be used for authentication should you ever forget your password.' It contains a table with columns for 'QUESTION' and 'ANSWER'. Two questions are visible: '1: The name of your favorite restaurant?' with the answer 'Perilla', and '2: Last name of your favorite schoolteacher?' with the answer 'Frey'.

Change Password

Figure 5: Change Password – User Profile (Bottom)

* Address Line 1: 4444 Orchard Lane
Address Line 2:
* City: Saint Petersburg
* State: FL
* Zip: 33738

Business E-mail Addresses
Select an email address as your primary email address.

PRIMARY	E-MAIL ADDRESS
<input checked="" type="radio"/>	Jane.Smith@ttb.gov
<input type="radio"/>	
<input type="radio"/>	

Authentication Questions
Select three questions and provide answers. These answers will enable you to create your initial password, and will be used for authentication should you ever forget your password.

	QUESTION	ANSWER
* 1:	The name of your favorite restaurant?	Perilla
* 2:	Last name of your favorite schoolteacher?	Frey
* 3:	The name of your favorite television series?	Arrested Development

Formulas Online Company Access
Formulas Online Company Access

PERMIT NUMBER	COMPANY CODE	ACTIVE DATE	USER REGISTRATION ID
	POMPURE	07/13/2011	1318848
	PROLIQ	07/13/2011	1318848
FL-W-77777		07/15/2011	1318848
OH-W-999		07/15/2011	1318848

COLAs Company Access
COLAs Online Company Access

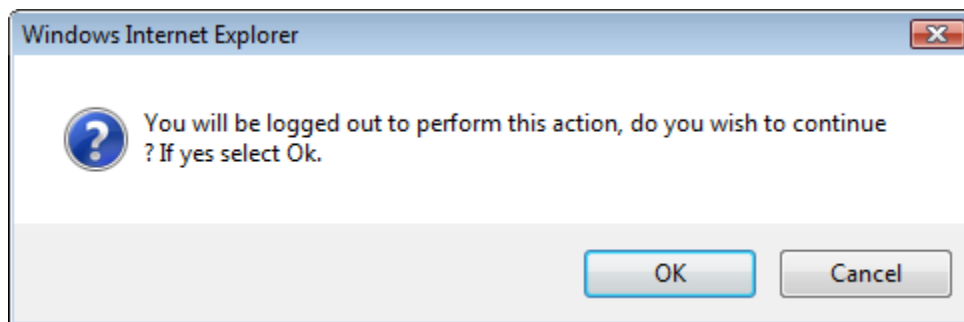
PERMIT NUMBER	SUBMITTER NAME	CREATE DATE	MODIFIED DATE
OH-W-999	Jane Smith	07/22/2011	07/22/2011
FL-W-77777	Jane Smith	07/22/2011	07/22/2011

Save Cancel

We collect this information to verify your compliance with Federal laws and regulations that TTB administrators. The information collected on this form must be considered confidential tax information under 26 U.S.C. 6103, and must not be disclosed to any unauthorized party under 26 U.S.C. 7213.

2. Select the [Change Password](#) link. A confirmation message box displays stating you will be logged out to perform this action. See Figure 6.

Figure 6: Change Password – Change Password Logout Confirmation



3. Select the **OK** button. The confirmation message box closes and you are logged out of Formulas Online. The Password Change Utility login page displays. See Figure 7.

Change Password

Figure 7: Change Password – Password Change Utility Login

ALCOHOL AND TOBACCO TAX AND TRADE BUREAU
U.S. Department of the Treasury

Welcome to Industry Member Password Change Utility (v1.2)

WARNING! This system is the property of the United States Department of Treasury. The Department may monitor any activity on the system and search and retrieve any information stored within the system. By accessing and using this system, you are consenting to such monitoring and information retrieval for law enforcement and other purposes.

To change your application's password, please Log On:

User ID:

Password:

After 2 failed login attempts, your account will be locked. Only a database administrator can unlock your account.

Alcohol and Tobacco Tax and Trade Bureau, 2006. Contact us at webmaster@ttb.treas.gov

UNITED STATES
DEPARTMENT OF
THE TREASURY

WARNING! THIS SYSTEM IS THE PROPERTY OF THE UNITED STATES DEPARTMENT OF TREASURY. UNAUTHORIZED USE OF THIS SYSTEM IS STRICTLY PROHIBITED AND SUBJECT TO CRIMINAL AND CIVIL PENALTIES. THE DEPARTMENT MAY MONITOR, RECORD, AND AUDIT ANY ACTIVITY ON THE SYSTEM AND SEARCH AND RETRIEVE ANY INFORMATION STORED WITHIN THE SYSTEM. BY ACCESSING AND USING THIS COMPUTER YOU ARE AGREEING TO ABIDE BY THE TTB RULES OF BEHAVIOR, AND ARE CONSENTING TO SUCH MONITORING, RECORDING, AND INFORMATION RETRIEVAL FOR LAW ENFORCEMENT AND OTHER PURPOSES. USERS SHOULD HAVE NO EXPECTATION OF PRIVACY WHILE USING THIS SYSTEM.

4. Enter your user ID in the User ID field.
5. Enter your current password in the Password field.
6. Select the **Log On** button. The Password Change Utility main page displays. See Figure 8.

Change Password

Figure 8: Change Password – Password Change Utility Main Page

Industry Member Password Change Utility Log Off

Your password must meet the following complexity rules:

- Password must be at least 8 characters long.
- Password must NOT contain your user-id.
- Password must contain at least 1 UPPERCASE, 1 lowercase, 1 digit, and 1 special character.
- Cannot reuse password that has been used in the last 10 times or within the last 48 hours.
- There are special characters that cannot be used in your password: ' (single-quote), " (double-quote), _ (underscore), = (equal sign), & (ampersand), and @ (at sign).

Your password is good for 90 days.

Change Password

Old Password:

New Password:

Retype New Password:

► **Note:** If you fail two login attempts or if you fail two times to answer your security questions correctly, your account will be locked. Please contact the TTB Help Desk by e-mail at TTB.Helpdesk@ttb.gov or voice at 866-240-0835 or 202-453-2100 to have your account unlocked.

7. Enter your current password in the Old Password field.
8. Enter your new password in the New Password field.
9. Re-enter your new password again in the Retype New Password field.

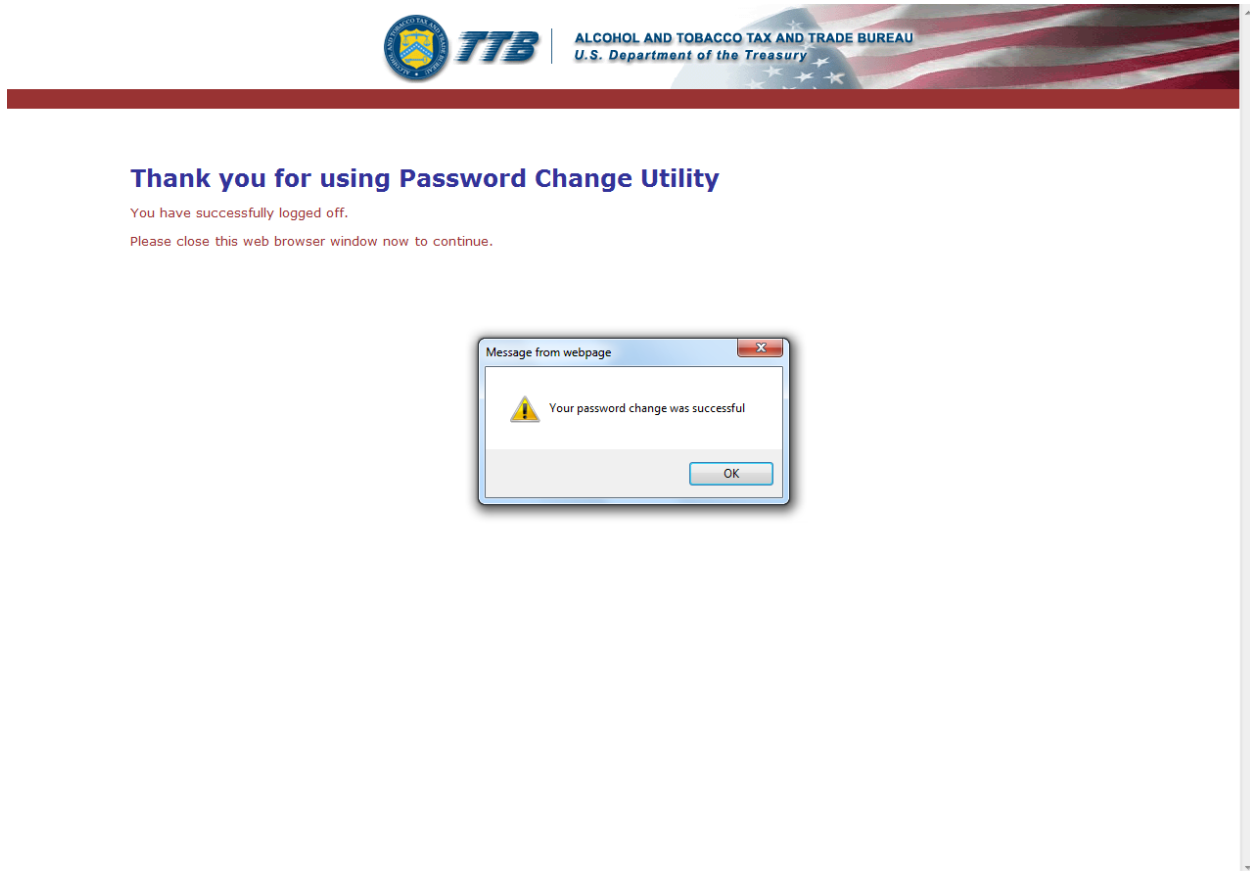
► **Note:** Passwords must meet the following complexity rules:

- Password must be at least 8 characters long.
- Password must not contain your user ID.
- Password must contain at least 1 UPPERCASE, 1 lowercase, 1 digit, and 1 special character.
- You cannot reuse a password that has been used in the last 10 times or within the last 48 hours.
- You cannot use the following special characters: ' (single-quote), " (double-quote), _ (underscore), = (equal sign), & (ampersand), and @ (at sign).

Change Password

10. If you make a mistake, select the **Clear** button to clear the entry before setting your new password.
11. If you change your mind, select the **Cancel** button to cancel before setting your new password.
12. Select the **Submit** button. A confirmation message box displays stating your password was successfully changed. See Figure 9.

Figure 9: Change Password – Password Change Successful



13. Select the **OK** button. The Password Change Utility closes.