



U.S. Department
of Transportation
**Federal Aviation
Administration**

ADMINISTRATOR'S FACT BOOK

September 2010

Produced by:
Assistant Administrator for Financial Services

Website:
[http://www.faa.gov/about/office_org/headquarters_offices/aba/
admin_factbook/](http://www.faa.gov/about/office_org/headquarters_offices/aba/admin_factbook/)

FAA MISSION

*To provide the safest, most efficient
aerospace system in the world.*

FAA VISION

*We strive to reach the next level of
safety, efficiency, environmental
responsibility and global leadership.
We are accountable to the American
public and our stakeholders.*

Table of Contents (cont.)

FAA Regional Boundaries Map28

FAA Resources

FAA Employment 29*
FAA Percent Minority and Female Employment 30*
FAA Major Work Force Employment 31*
Labor Relations 32*
FAA Finances 33
FAA NAS Operational Facilities 34

Organization

FAA Officials—Washington Headquarters 35*
FAA Officials—Major Field Organizations 38
FAA Officials—International Area Offices 40*
FAA Flight Plan 2009-2013 41

For further information call ABA-1 (202-267-9105)

*Updated this issue

Distribution: A-WXYZE-3; A-FOF-O(STD)

Table of Contents

FAA Vision and Mission.....Inside Front Cover*
FAA Values Inside Back Cover*

Safety

Aviation Accidents by Type of Operation..... 3*
Aviation Accident Rates by Type of Operation..... 4*
Airspace Incidents by Incident Type..... 5
Airspace Incident Rates by Incident Type..... 6
NTSB U.S. Transportation Fatalities 7

FAA Air Traffic

FAA Air Traffic Activity..... 8*
Air Route Traffic Control Center Activity..... 9*
50 Busiest FAA Air Traffic Control Towers 10*
25 Busiest Contracted Air Traffic Control Towers 12*
50 Busiest Radar Approach Control Facilities..... 13*
Automated Flight Service Stations Activity 15*

Airports

Number of U.S. Airports..... 16
National Airspace Total System Delays 17

Aircraft

U.S. Air Carrier Activity..... 18
U.S. General Aviation and Air Taxi Activity 19
Aircraft Certification Service..... 20

Industry Trends

Scheduled U.S. Air Carrier Traffic & Fin. Trends 21
Aviation Forecasts..... 22*

Commercial Space Transportation

AST Licensed Activity 23
U.S. Commercial Space Launch Schedule 24

Airmen

Active Pilots and Nonpilots 25

FAA Organizational Chart..... Center Fold*

Aviation Accident Rates by Type of Operation

Type of Operation	2006		2007		2008		2009		% Chg 09-08	
	Number	Rate	Number	Rate	Number	Rate	Number	Rate	Number	Rate
Large Air Carriers	33	17	28	14	28	14	30	16	7%	14%
Commuter	3	1 00	3	1 00	7	2 40	2	0 69	-33%	-31%
Air Taxi	52	1 40	62	1 50	58	1 80	47	1 60	-24%	7%
General Aviation	1,523	6 40	1,652	6 90	1,566	6 90	1 474	7 20	-11%	4%

↳

Accident Rates are per 100,000 Flight Hours Flight hours compiled by FAA

Note 2009 data are preliminary
As of 06/30/10

Source NTSB
www.nts.gov/aviation/stats.htm

Airspace Incidents by Incident Type

Incident Type	Year	Jan	Feb	Mar	Apr	May	Jun	Jul	Aug	Sep	Oct	Nov	Dec	Year Total
Near Midair Collisions	2007	6	11	13	5	10	9	10	12	11	6	9	6	108
	2008	7	9	12	5	9	9	4	13	2	7	9	6	92
	2009	2	5	4	6	11	4	7	5	6	7	0	0	57
Pilot Deviations	2007	207	181	220	250	281	246	240	279	216	281	245	187	2,833
	2008	240	215	256	287	341	285	299	323	307	272	287	239	3,351
	2009	258	252	297	244	289	248	264	242	288	219	0	0	2,601
Operational Errors	2007	83	94	121	133	115	132	104	128	90	115	98	103	1,318
	2008	102	87	142	128	150	115	152	105	90	108	98	101	1,378
	2009	95	95	80	109	101	98	116	133	147	142	0	0	1,116
Vehicle Pedestrian Deviations	2007	24	21	21	21	24	29	28	18	22	22	27	18	275
	2008	27	18	19	21	25	36	34	26	33	30	26	21	316
	2009	18	23	21	27	17	33	24	28	24	21	0	0	236
Surface Incidents	2007	67	79	84	97	101	109	110	111	89	89	109	80	1,125
	2008	97	88	91	94	118	123	129	120	115	96	113	70	1,254
	2009	87	80	83	92	93	98	113	106	97	77	0	0	926
Runway Incursions*	2008	77	67	74	75	92	101	98	101	98	75	92	57	1,007
	2009	77	62	63	77	81	84	102	92	89	65	69	58	919
	2010	68	67	85	90	82	98	105	102					697

Note: Preliminary data and subject to change.

Note: Bolded data will give invalid results based on new RI data compilation.

Source: AJF-A7 (ATO-IT)

(718) 553-3438

*ATO-S

(202) 385-4788

As of: 10/31/09

*As of: 08/31/10

CH

Airspace Incident Rates by Incident Type

Incident Type	2005		2006		2007		2008		Percent Change	
									2007 - 2008 (4)	
	Number	Rate	Number	Rate	Number	Rate	Number	Rate	Number	Rate
Operational Errors (1)	1,497	96	1,307	85	1,316	86	1,378	96	5%	12%
Pilot Deviations (2)	2,244	1.36	2,715	1.65	2,833	1.73	3,351	2.04	18%	18%
Surface Incidents (3)	944	1.51	991	1.62	1,125	1.85	1,254	2.20	11%	19%

9

(1) Per 100,000 Facility Activities
 (2) Per 100,000 Flight Activities
 (3) Per 1,000,000 Airport Operations
 (4) Calculations use fifteen decimal places for rates (rounded two places for display)
 Note: 2008 data preliminary and subject to change

Source: ATO-A (IT)
 (202) 385-4802

As of 10/31/09

**National Transportation Safety Board
2007-2008 U.S. Transportation Fatalities**

	2007 ¹	2008
Highway		
Passenger cars	18,614	14,587
Light Trucks and Vans	12,458	10,764
Pedestrians	4,699	4,378
Motorcycles	5,174	5,290
Pedalcycles ²	701	716
Medium and heavy trucks	805	677
Buses	36	67
All Other ³	772	782
Total.....	41,269	37,261
Grade Crossings⁴	(335)	(287)
Rail		
Intercity ⁵		
Trespassers and nontrespassers ⁶	558	523
Employees and contractors	22	30
Passengers on trains	5	24
Light heavy and commuter rail ⁷	209	200
Total.....	794	777
Marine		
Recreational Boating	685	709
Cargo Transport	24	16
Commercial fishing ⁸	33	42
Commercial Passengers	24	12
Total.....	766	779
Aviation		
General Aviation	496	495
Airlines	1	3
Air Taxi	43	66
Commuter	0	0
Foreign/Unregistered ⁹	10	8
Total.....	550	572
Pipeline		
Gas	11	6
Liquids	4	2
Total.....	15	8
GRAND TOTAL.....	43,384	39,397

¹ Numbers for 2008 are preliminary estimates. Aviation data from NTSB, marine data from Department of Homeland Security, all other data from DOT. ² Includes bicycles or other cycles.
³ Includes vehicle nonoccupants other than pedestrians and occupant fatalities in other vehicle types ex farm or construction equipment. ⁴ Grade crossing fatalities are not counted as a separate category for determining the grand total because they are included in the highway and rail categories as appropriate. ⁵ Data reported to Federal Rail Administration (FRA). ⁶ Includes persons on railroad property with and without permission. Does not include motor vehicle occupants killed at grade crossings. ⁷ Data reported to the Federal Transit Administration (FTA). Fatalities for commuter rail operations may also be reported to the FRA and may be included in the intercity railroad fatalities. ⁸ Refers to only operational fatalities. ⁹ Includes non-U.S. registered aircraft involved in accidents in the U.S.

Air Traffic

FAA Air Traffic Activity (In Thousands)

Aircraft Handled by	Jan-Jun 2010*	Jan-Jun 2009	Jan-Dec 2009*
FAA ARTCC's			
Air Carrier	11,114	11,165	22,132
Air Taxi	4,269	4,226	8,431
General Aviation	3,272	3,072	6,258
Military	1,526	1,507	2,962
TOTAL...	20,181	19,970	39,783
Airport Operations			
Logged by FAA Towers			
Air Carrier	6,111	6,225	12,483
Air Taxi	3,932	3,982	8,025
General Aviation	7,654	7,949	15,972
Military	770	755	1,471
TOTAL...	18,467	18,911	37,951
Airport Operations			
(Contracted)			
Air Carrier	125	123	246
Air Taxi	686	675	1,377
General Aviation	5,507	5,805	11,398
Military	578	582	1,075
TOTAL...	6,896	7,185	14,096
TRACON Operations			
Logged by FAA Towers			
Air Carrier	6,132	6,237	12,617
Air Taxi	6,798	6,913	9,306
General Aviation	6,593	6,628	13,765
Military	1,160	1,148	2,248
TOTAL...	20,683	20,926	37,936
Flight Services	Jan-Jun	Jan-Jun	Jan-Dec
Logged by: **	2010*	2009	2009*
Flight Service Stations	289	278	642
Automated Flight Service Stations	3,838	4,165	8,498
TOTAL...	3,927	4,443	9,140

*Preliminary Source APO-130
As of 07/08/10 (202) 267-3350
**As of 07/08/10 ATO-A/AJA
(202) 385-4734

Air Route Traffic Control Center Activity

CY 2009 Rank	Center	Aircraft Handled (000's)		
		Jan-Jun 2010*	Jan-Jun 2009	Jan-Dec 2009*
1	Atlanta, GA	1,394	1,396	2,779
2	New York, NY	1,361	1,355	2,708
3	Leesburg, VA (DC)	1,278	1,292	2,572
4	Chicago, IL	1,168	1,132	2,328
5	Miami, FL	1,254	1,188	2,228
6	Cleveland, OH	1,070	1,070	2,006
7	Jacksonville, FL	1,171	1,130	2,151
8	Memphis, TN	1,025	1,021	2,057
9	Indianapolis, IN	958	985	1,972
10	Los Angeles, CA	977	979	1,957
11	Houston, TX	1,004	991	1,952
12	Fort Worth, TX	961	937	1,907
13	Minneapolis, MN	877	869	1,805
14	Nashua, NH (Boston)	820	832	1,719
15	Kansas City, KS	834	850	1,717
16	Denver, CO	834	817	1,664
17	Oakland, CA	732	718	1,448
18	Albuquerque, NM	734	725	1,446
19	Salt Lake City, UT	632	647	1,326
20	Seattle, WA	574	564	1,149
21	Anchorage, AK	257	236	507
22	San Juan, PR	141	127	507
23	Guam **	127	110	212

*Preliminary

**Center Radar Approach Control (CERAP)

As of 08/04/10

Source APO-130
(202) 267-3350

50 Busiest FAA Airport Traffic Control Towers

Airport Operations (000's)				
CY 2009 Rank	Tower and State	Jan-Jun 2010*	Jan-Jun 2009	Jan-Dec 2009*
1	Hartsfield-Jackson Atl Intl, GA	471	477	970
2	Chicago/O'Hare Int'l , IL	427	407	828
3	Dallas/Ft Worth Int'l , TX	321	312	639
4	Denver International, CO	310	303	612
5	Los Angeles International, CA	285	267	545
6	Houston/G Bush Intercont'l, TX	263	268	539
7	Las Vegas/McCarran Int'l, NV	247	253	511
8	Charlotte/Douglas Int'l, NC	255	255	509
9	Philadelphia Int'l, PA	223	235	473
10	Phoenix International, AZ	226	231	457
11	Minneapolis-St Paul Int'l, MN	211	220	433
12	Detroit Metro Wayne Co , MI	220	218	433
13	John F Kennedy Int'l, NY	196	212	422
14	Newark International, NJ	202	208	415
15	Phoenix-Deer Valley, AZ	182	207	402
16	San Francisco Int'l, CA	189	184	380
17	Salt Lake City Int'l, UT	180	184	373
18	Washington Dulles Int'l, VA	183	184	366
19	Boston/Logan Int'l, MA	176	174	361
20	La Guardia NY	180	175	357
21	Miami International, FL	189	177	351
22	Van Nuys, CA	158	172	351
23	Grand Forks International, ND	165	176	346
24	Memphis International, TN	165	170	339
25	Seattle/Tacoma Int'l, WA	151	156	318

*Preliminary

Source APO-130
(202) 267-3350

As of 08/04/10

50 Busiest FAA Airport Traffic Control Towers

		Airport Operations (000's)		
CY 2009 Rank	Tower and State	Jan-Jun 2010*	Jan-Jun 2009	Jan-Dec 2009*
26	Daytona Beach Int'l, FL	147	171	312
27	Orlando International, FL	161	158	306
28	Long Beach/Daugherty, CA	155	144	297
29	Santa Ana/John Wayne, CA	139	142	296
30	Honolulu International, HI	129	139	275
31	Washington National, DC	132	137	274
32	Baltimore/Wash Int'l, MD	135	130	268
33	Fort Lauderdale/Hollywood, FL	142	138	267
34	Seattle/Boeing Field, WA	128	128	266
35	Denver/Centennial, CO	138	123	263
36	Anchorage International, AK	128	116	257
37	Mesa/Falcon Field, AZ	121	137	255
38	Chicago Midway, IL	120	118	245
39	Tulsa/Riverside, OK	101	129	245
40	Prescott/Love Field, AZ	110	126	240
41	Metropolitan Oakland Int'l, CA	112	118	235
42	Portland International, OR	110	112	227
43	Tomball DW Hooks, TX	102	122	225
44	Covington/Cincinnati Int'l, KY	90	113	223
45	Portland-Hillsboro, OR	114	117	222
46	San Diego/Gillespie Field, CA	105	108	218
47	Orlando/Sanford, FL	94	106	215
48	Miami/Kendall-Tamiami, FL	103	114	213
49	Lambert-St Louis Int'l, MO	93	106	209
50	San Diego/Montgomery, CA	101	102	203

25 Busiest Contracted Airport Traffic Control Towers

Airport Operations (000's)				
CY 2009 Rank	Tower and State	Jan-Jun 2010*	Jan-Jun 2009	Jan-Dec 2009*
1	Chandler Municipal, AZ	91	108	204
2	Phoenix/Williams Gateway, AZ	91	96	186
3	Phoenix-Goodyear Muni, AZ	71	93	178
4	Hollywood/North Perry, FL	63	96	162
5	San Antonio/Stinson Field, TX	63	79	154
6	Ormond Beach Municipal, FL	61	81	154
7	New Smyrna Beach Muni, FL	68	80	143
8	Denton, TX	67	73	142
9	Melbourne International, FL	67	75	141
10	Titusville/Space Coast Rgnl FL	55	75	137
11	Kalaheo, HI	57	67	130
12	Tucson/Ryan Field, AZ	61	62	126
13	New Iberia/Acadiana Rgnl, LA	71	69	125
14	Orlando/Kissimmee Muni, FL	67	66	120
15	Ramona Airport, CA	52	59	115
16	Kaiua/Kona International HI	71	52	109
17	San Angelo/Mathis Field, TX	53	58	109
18	Hyannis, MA	48	54	108
19	Jacksonville/Craig Muni, FL	55	55	107
20	San Carlos, CA	50	52	106
21	Glendale Municipal, AZ	42	60	104
22	Naples Municipal, FL	47	59	101
23	Lihue, HI	57	48	101
24	Pompano Beach Airpark, FL	56	48	95
25	St Augustine, FL	54	48	95

*Preliminary

As of 08/04/10

50 Busiest Radar Approach Control Facilities

CY 2009 Rank	Facilities/State	Tracon Ops (000s)		
		Jan-Jun 2010*	Jan-Jun 2009	Jan-Dec 2009*
1	Southern Calif. TRACON, CA.....	645	636	1,972
2	New York TRACON, NY.....	573	567	1,831
3	Potomac TRACON, DC.....	473	470	1,490
4	Northern Calif. TRACON, CA.....	428	451	1,446
5	Atlanta TRACON, GA.....	410	413	1,275
6	Chicago TRACON, IL.....	386	370	1,186
7	Dallas/Ft. Worth, TRACON, TX.....	351	341	1,066
8	Houston TRACON, TX.....	296	294	898
9	Miami International, FL.....	325	306	874
10	Denver TRACON, CO.....	279	276	853
11	Honolulu Control Facility, HI.....	277	256	850
12	Phoenix TRACON, AZ.....	218	227	851
13	Philadelphia International, PA.....	195	203	637
14	Charlotte/Douglas Int'l, NC.....	194	199	604
15	Boston TRACON, MA.....	187	179	603
16	Central Florida TRACON, FL.....	220		656
17	Las Vegas TRACON, NV.....	186	192	588
18	Detroit TRACON, MI.....	179	179	560
19	Minneapolis TRACON, MN.....	169	175	548
20	Seattle/Tacoma TRACON, WA.....	146	149	484
21	Salt Lake City TRACON, UT.....	144	144	456
22	Tampa International, FL.....	162	169	452
23	San Antonio Int'l, TX.....	120	120	370
24	Jacksonville Int'l, FL.....	125	126	351
25	St Louis TRACON, MO.....	103	110	341

* Preliminary

As of: 08/04/10

50 Busiest Radar Approach Control Facilities

CY 2009 Rank	Facilities/State	Tracon Ops (000's)		
		Jan-Jun 2010*	Jan-Jun 2009	Jan-Dec 2009*
26	San Juan CERAP, PR	118	127	336
27	Daytona Beach Int'l, FL	108	126	327
28	Covington/Cincinnati Int'l, OH	89	104	320
29	Portland TRACON, OR	92	94	302
30	Pensacola TRACON, FL	99	101	287
31	Corpus Christi, TX	84	102	294
32	Milwaukee/Gen Mitchell Int'l, WI	92	78	278
33	Cleveland Hopkins Int'l, OH	82	84	274
34	Anchorage TRACON, AK	77	69	261
35	Pittsburgh International, PA	76	80	260
36	Indianapolis International, IN	79	81	257
37	Palm Beach International, FL	105	104	256
38	Raleigh-Durham Int'l, NC	77	85	253
39	Austin, TX	81	82	250
40	Kansas City International, MO	74	79	250
41	Norfolk International, VA	75	75	241
42	Nashville International, TN	79	76	241
43	Port Columbus Int'l, OH	73	72	239
44	High Desert TRACON, CA	86	75	223
45	Cape TRACON, MA	44	47	223
46	Yankee TRACON, CT	66	67	223
47	Albuquerque Int'l, LA	69	75	222
48	Tucson TRACON, AZ	77	78	220
49	Oklahoma City/Will Rogers, OK	68	70	214
50	Omaha TRACON, NE	61	65	174

Automated Flight Service Stations Activity

CY 2008	AFSS/State	Flight Services (000's)		
		Jan-Jun 2010*	Jan-Jun 2009	Jan-Dec 2009
Rank				
1	Ashburn AFSS, VA.....	3418	3932	7983
2	Kenai, AK.....	130	133	294
3	Fairbanks, AK.....	58	67	144
4	Juneau, AK.....	32	33	76

* Preliminary

(202) 385-4734

As of: 07/08/10

Airports

Number of U.S. Airports (As of December 31)

	2009	2008	2007
Total Airports	19,750	19,930	20,341
Airports.....	13,494	13,589	13,822
Heliports.....	5,571	5,568	5,708
Seaplane Bases.....	497	503	527
Gliderports.....	35	35	35
Balloonports.....	14	14	15
Ultralight Flightparks.....	139	139	147
Total Civil Public Use Airports	5,178	5,202	5,221
Civil Public Use Part 139.....	559	560	565
Civil Public Use Non-Part 139.....	4,619	4,642	4,656
Civil Public Use Airports Abandoned..	16	16	18
Newly Established Public Use.....	5	3	9
Total Civil Private Use Airports	14,298	14,451	14,839
Civil Private Use Airports Abandoned.	360	461	297
Newly Established Private Use.....	214	151	274
Military Airports.....	274	277	281

Source: AAS-100

Note: Format change with 2007 data

(202) 267-8752

As of: 12/31/09

National Airspace Total System Delays

Year	Jan	Feb	Mar	Apr	May	Jun	Jul	Aug	Sep	Oct	Nov	Dec	YTD Total
2010*	24,243	22,330	30,725	20,802	35,839	38,973	38,831	0	0	0	0	0	211,743
2009	26,704	30,131	43,481	48,612	47,867	52,287	51,129	44,829	29,371	41,078	24,597	33,362	473,228
2008	39,788	46,983	43,868	43,114	44,214	68,585	64,627	50,108	38,053	34,889	37,222	43,387	554,598
2007	32,927	30,071	39,558	39,340	44,055	58,824	54,889	52,875	38,896	55,140	46,880	47,931	541,186
2006	29,483	24,705	37,218	35,132	40,669	48,096	47,606	48,547	48,092	51,053	43,482	39,797	491,860

Delays of 15 minutes or longer

* Preliminary information that is subjected to change

As of: 07/31/10

Source: ATT-220
(703) 904-4470

Aircraft

U.S. Air Carrier Activity

	CY 2009	CY 2008	CY 2007
Type of Carrier			
Domestic, Flag, Supplemental, and Cargo Air Carriers	7,177	7,255	7,449
Commuter Air Carriers and Air Taxis	11,342	11,386	11,483
Total Number of Aircraft¹.....	18,519	18,641	18,932
Type of Aircraft			
Jet	9,977	9,990	9,999
Turboprop	2,576	2,688	2,817
Piston	3,143	3,213	3,410
Rotary Wing	2,823	2,750	2,708
Air Carrier Traffic Statistics² (Millions)³			
Passenger miles flown	771,100	812,088	836,413
Passenger enplanements	706	745	763
Ton miles	110,247	119,491	124,092
Aircraft miles flown	7,148	8,115	8,283
Passenger load factor ³			
Domestic	81.0%	79.5%	79.8%
International	79.9%	79.8%	80.4%

¹ Source: Vital Information System

² Includes domestic and international scheduled and non-scheduled service, domestic flag, supplemental, cargo air carriers and commuters - CY 09 estimated

³ Proportion of aircraft seating capacity that is sold

As of 03/31/10

Source: AFS-40

(202) 385-4514

*BTS (K-25)

(202) 366-8513

**U.S. General Aviation
and Air Taxi Activity
(Calendar Years)**

	Estimated Active Aircraft (thousands)		Estimated Hours Flown (Millions)	
	2008	2007	2008	2007
Total	228.7	231.6	26.0	27.9
By Type Aircraft				
Piston	163.0	166.9	15.1	16.3
Turboprop	8.9	9.5	2.5	2.7
Jet	11.0	10.4	3.6	3.9
Rotary Wing	9.9	9.6	3.2	3.2
Experimental	23.4	23.2	1.2	1.3
Light Sport	6.8	6.1	0.3	0.3
Other	5.7	5.9	0.2	0.2
By Type Flying				
Corporate	11.7	10.9	3.1	3.2
Business	22.4	25.0	2.5	3.1
Personal	154.4	152.5	8.3	8.7
Instructional	15.0	14.7	4.4	3.8
Aerial Application	3.1	4.2	0.9	1.4
Aerial Observation	5.3	5.2	1.4	1.4
Aerial Other	1.0	1.4	0.3	0.4
External Load	0.4	0.2	0.2	0.2
Other Work	0.9	0.9	0.3	0.1
Sightseeing	0.7	1.3	0.2	0.2
Air Tours	0.4	0.9	0.3	0.5
Air Taxi	6.9	7.9	2.4	3.1
Air Medical Services	1.6	0.9	0.7	0.5

As of 02/18/10

AVP-220
(202) 267-8659

**Aircraft Certification Service
Aircraft Certification Mission and
Program Files**

	FY 2009	FY 2008
Type Certificates/Supplemental Type Certificates		
Issued.....	1,194	1,272
Other Design Approvals Issued.....	3,054	3,184
Production Approvals (Including Amendments)		
Issued.....	2,971	2,642
Airworthiness Certificates Issued.....	508	597
New Airworthiness Directives (AD) Issued.....	325	461
New Designees (Representative of the Administrator)		
Appointed.....	384	374
Total Active Designees.....	3,921	3,967

As of: 01/14/10

Source: AIR-530
202-267-8386

Industry Trends

Scheduled U.S. Air Carrier Traffic* and Financial** Trends

(In Billions)

	FY 2009	FY 2008	Numerical Change	Percent Change
TRAFFIC				
ASM'S				
Majors	892.85	955.11	(62.26)	(6.5)
Nationals	58.81	60.50	(1.69)	(2.8)
Regionals	16.35	26.77	(10.42)	(38.9)
Totals.....	968.01	1042.38	(74.37)	(7.1)
RPM'S				
Majors	715.08	782.85	(67.77)	(8.7)
Nationals	43.45	46.64	(3.19)	(6.8)
Regionals	11.38	18.87	(7.49)	(39.7)
Totals.....	769.91	848.36	(78.45)	(9.2)
Load Factor (in percent)				
Majors	80.1%	79.9%	0.2	
Nationals	78.5%	77.1%	1.4	
Regionals	69.6%	70.5%	(0.9)	
Totals.....	79.7%	79.5%	0.2	
FINANCIAL				
Revenues				
Majors	\$144.58	\$171.22	(\$26.64)	(15.6)
Nationals	\$11.32	\$13.54	(\$2.22)	(16.4)
Regionals	\$1.35	\$2.86	(\$1.51)	(49.2)
Totals.....	\$157.25	\$187.62	(\$30.37)	(16.2)
Expenses				
Majors	\$144.64	\$173.34	(\$28.70)	(16.6)
Nationals	\$10.61	\$13.31	(\$2.70)	(20.3)
Regionals	\$1.24	\$2.77	(\$1.53)	(55.2)
Totals.....	\$156.49	\$189.42	(\$32.93)	(17.4)
Operating Profit/Loss				
Majors	(\$0.08)	(\$2.12)	\$2.04	
Nationals	\$0.71	\$0.24	\$0.48	
Regionals	\$0.11	(\$0.11)	\$0.22	
Totals.....	\$0.74	(\$1.99)	\$2.73	

*Effective FY 2005 DOT mandated small certificated and commuter air carriers (carriers with aircraft size less than 60 seats) report traffic results on DOT Form 41. Financial results for these carriers are reported on DOT Form 298C and are excluded from this report.

Source APO-110

As of 01/15/10

21

(202) 493-4236

Aviation Forecasts

	Estimated FY 2009	Forecast FY 2013
FAA FACILITY WORKLOAD		
Aircraft Handled by FAA ARTCC's (Millions)		
Air Carrier	22.2	24.3
Air Taxi/Commuter	8.5	8.5
General Aviation	6.3	6.3
Military	3.0	3.0
Total	40.1	42.1
Operations Logged by FAA/Contract Towers (Millions)		
Airport	52.9	53.4
Instrument	39.4	40.7
CIVIL AVIATION ACTIVITY		
Certificated Route Air Carrier		
Revenue Passenger Enplanements (Millions)	547.7	590.4
Revenue Passenger Miles (Billions)	698.2	777.9
Air Carrier Aircraft.....	4,692	4,832
General Aviation Estimated		
Hours Flown (Millions)*	23.3	27.0
Active Aircraft (Thousands)*	229.1	235.7
ESTIMATED FUEL CONSUMED BY U.S. DOMESTIC		
CIVIL AVIATION (Millions of Gallons)		
Jet Fuel		
Air Carrier	17,224	17,802
General Aviation	1,364	2,046
Aviation Gas		
Air Carrier	2	2
General Aviation	225	235
Active Pilots (Thousands)*	594,285	582,105

*Calendar Year

As of 03/30/10

Source APO-110
(202) 493-4236

**U.S. Commercial Space Transportation
FAA Licensed Activity**

	CY 2010 (Projected)	CY 2009	CY 2008
Licensed Commercial Launches			
TOTAL	4-7	6	11
Number of Orbital Launches	4-7	5	11
Number of Suborbital Launches	0	0	0
By Launch Vehicle Type			
Delta II, IV (Boeing Company)	2	2	2
Atlas V (Lockheed Martin)	0	1	1
Zenit 3SL (Sea Launch)	1	1	5
Falcon 9 (SpaceX)	3	0	NA
Falcon 1 (SpaceX)	1	1	2
Pegasus XL (Orbital Sciences)	0	0	1
By Launch Site (Federal)			
Cape Canaveral AF Station, FL	4	2	1
Vandenberg AFB, CA	1	1	2
Kwajalein / Marshall Islands	1	1	3
By Launch Site (Commercial)			
Pacific Ocean	1	1	5
Other Commercial	0	0	0
Experimental Permit Launches			
TOTAL (not part of license total)	0	0	5

Source: AST
(202) 267-7989

As of: 1/20/10

United States Commercial Space Launch Schedule, CY 2010 (launch dates are subject to change)		
Payload (Operator)/ Description	Launch Company/ Vehicle	Launch Date/ Launch Site (Status)
<i>GOES P</i> (USA) Weather Satellite	Boeing Launch Services Delta IV	March 2010 Cape Canaveral AFS
<i>Dragon Inaugural</i> (USA) Demonstration	Space X Falcon 9	March/April 2010 Cape Canaveral AFS
<i>COTS Demo Flight 1</i> (USA) Demonstration	Space X Falcon 9	Spring 2010 Cape Canaveral AFS
<i>Cosmo Skymed 4</i> (Italy) Remote Sensing Sat	Boeing Launch Services Delta II	September 2010 Vandenberg AFB
<i>COTS Demo Flight 2</i> (USA) Demonstration	Space X Falcon 9	Fall 2010 Cape Canaveral AFS
<i>Eutelsat W7</i> (France) Comm. Satellite	Sea Launch Zenit 3SL	Summer/Fall 2010 Pacific Ocean Platform
<i>Demonstration</i> (USA) Demonstration	Space X Falcon 1e	2010 Reagan Test Site

As of: 8/15/09

Source: AST
(202) 267-7989

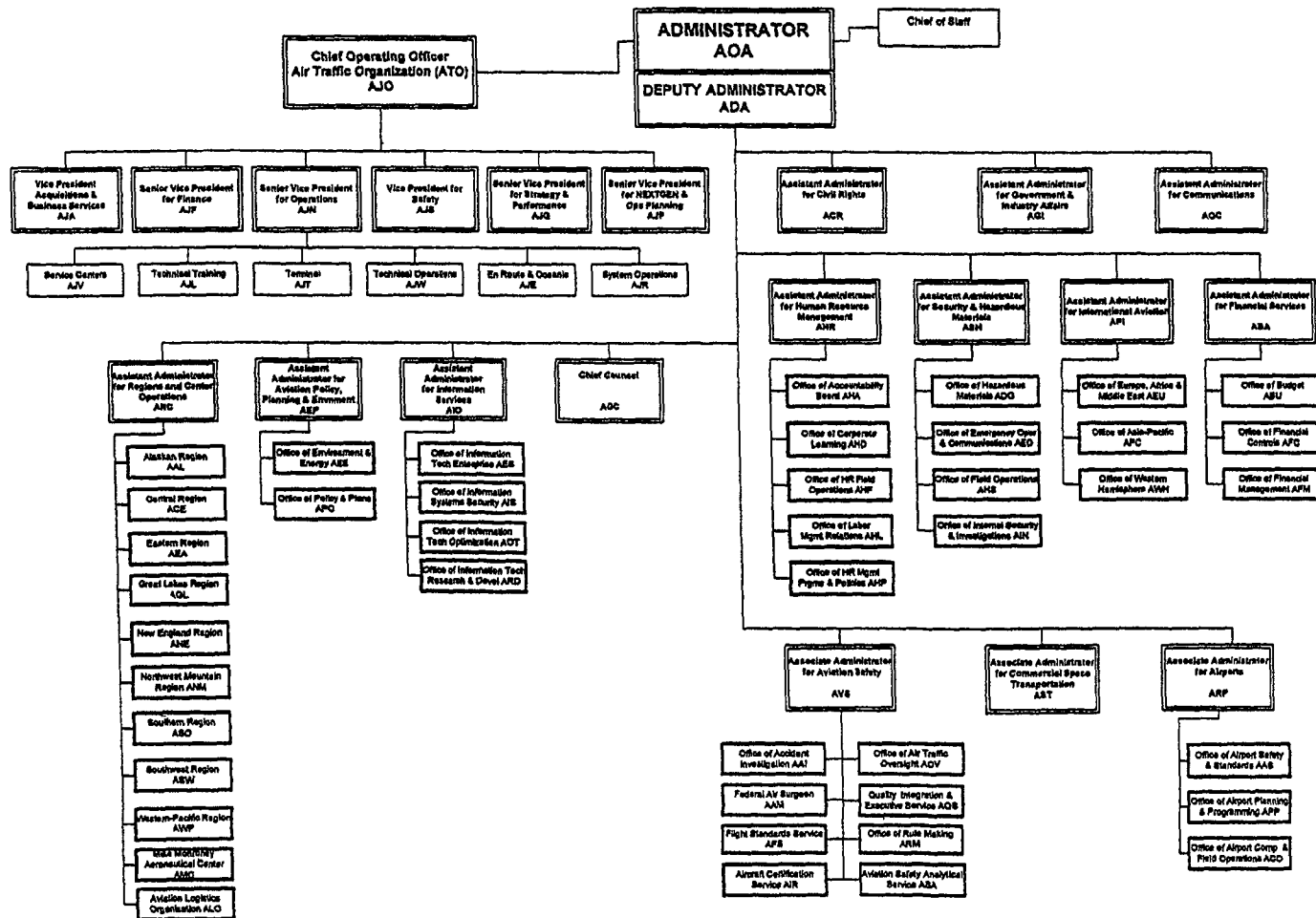
**Active Pilots and Nonpilots
(As of 31 December)**

	2009		2008	
	Total	Women	Total	Women
Pilot-Total.....	594,285	36,808	613,746	37,981
Student	72,280	8,450	80,989	9,127
Private	211,619	14,322	222,598	15,015
Commercial	125,738	8,289	124,746	8,083
Airline Transport	144,600	5,638	146,838	5,657
Nonpilot-Total.....	682,315	147,052	678,181	144,968
Mechanic	329,027	6,980	326,278	6,740
Repairmen	41,389	2,335	41,056	2,284
Ground Instructor	75,461	5,800	74,983	5,785
Flight Attendant	156,741	126,034	154,671	124,419
Flight Engineer	51,022	1,828	53,135	1,894
Flight Instructor.....	94,683	6,362	93,202	6,293

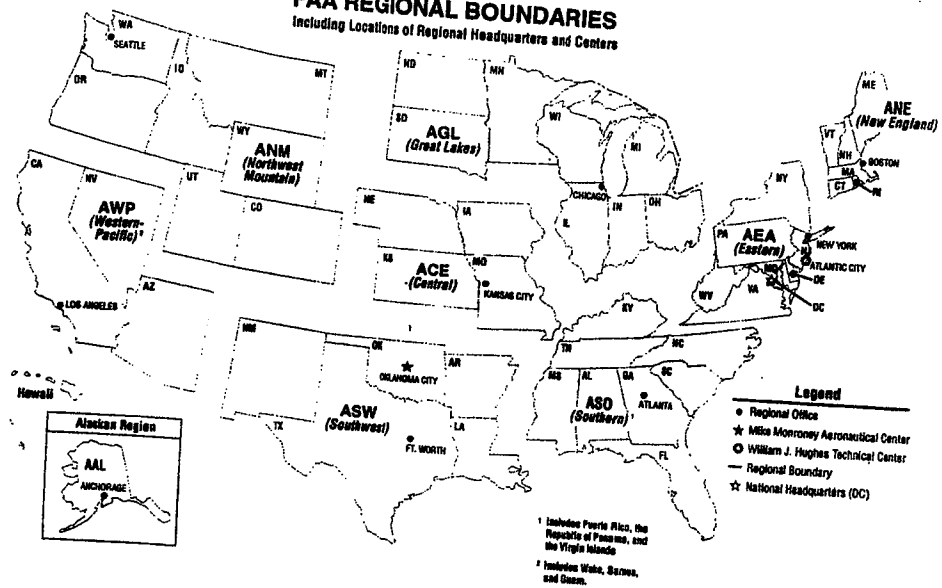
As of 12/31/2009

As of December 8, 2009

FEDERAL AVIATION ADMINISTRATION



U. S. DEPARTMENT OF TRANSPORTATION
 Federal Aviation Administration
FAA REGIONAL BOUNDARIES
 Including Locations of Regional Headquarters and Centers



FAA Resources

FAA Employment (Permanent Employees)¹

	FY10	FY09
Line of Business		
Air Traffic Organization (ATO)	35,224	34,986
Aviation Safety (AVS)	7,309	7,230
Airports (ARP)	500	490
Comm Space Transportation (AST)	65	67
Staff Offices**	4,358	4,247
Total	47,456	47,020
Region/Center/Headquarters (included in above total)		
Aeronautical Center	3,549	3,483
Alaskan	943	941
Central	2,197	2,218
Eastern	4,858	4,698
Great Lakes	5,853	5,761
New England	1,505	1,443
Northwest Mountain	4,349	4,230
Southern	7,195	7,014
Southwest	5,169	5,041
Western-Pacific	4,824	4,701
Washington Headquarters ²	5,885	6,389
Technical Center	1,129	1,101

¹ Full time permanent and part time permanent employees only

² Washington Headquarters employees physically located in

Orville/Wilbur Wright Buildings and all surrounding areas

** Staff Offices include ABA, ACR, ADA, AEP, AGC, AGI, AHR, AIO, AOA, AOC, APO, ARC, ASH

Disclaimer: This is a statistical snapshot of the workforce demographics. The use of this data in any employment decision is PROHIBITED without the express written authorization of the Deputy Chief Counsel for Operations, AGC-3.

As of 06/30/10

Source: AHP-100
(202) 267-8267

FAA Percent Minority & Female Employment¹

Lines of Business/Region/Center/Headquarters	% Minority		%Female	
	FY10	FY09	FY10	FY09
Air Traffic Organization (ATO)	21 0	21 0	21 0	21 0
Aviation Safety (AVS)	20 0	20 0	27 0	27 0
Airports (ARP)	28 0	28 0	40 0	39 0
Commercial Space Transportation (AST)	38 0	36 0	29 0	31 0
Staff Offices	33 0	33 0	51 0	51 0
Total	22 0	22 0	25 0	25 0
Aeronautical Center	22 0	22 0	37 0	38 0
Alaskan	15 0	16 0	22 0	22 0
Central	14 0	13 0	21 0	22 0
Eastern	17 0	17 0	18 0	18 0
Great Lakes	12 0	12 0	19 0	19 0
New England	8 0	8 0	20 0	21 0
Northwest Mountain	15 0	15 0	24 0	24 0
Southern	26 0	26 0	21 0	21 0
Southwest	26 0	26 0	21 0	21 0
Western-Pacific	32 0	32 0	21 0	21 0
Washington Headquarters ²	33 0	31 0	41 0	38 0
Technical Center	23 0	23 0	31 0	32 0

¹ All FAA employees

² Washington Headquarters employees physically located in Orville/Wilbur Wright Buildings and surrounding areas

As of 06/30/10

Source AHP-100
(202) 267-8257

Major Work Force Employment

	Employment				
	FY10	FY09	FY08	%Chg FY10 - FY09	Actual Change
Controller Work Force*					
Controllers	15,743	15,770	15,381	-0.2%	-27
Traffic Management Coordinators	565	558	552	1.3%	7
Operations Supervisors	1,925	1,918	1,854	0.4%	7
Flight Service Stations (FSS)					
Field	170	168	181	1.2%	2
Maintenance					0
PASS Technical	6,058	6,155	6,106	-1.6%	-97
NATCA Engineers	1,249	1,270	1,197	-1.7%	-21
1st Line Supervisors	652	680	674	-4.1%	-28
Airports Work Force	479	479	479	0.0%	0
Aircraft Certification**	1,273	1,266	1,215	0.6%	7
Flight Standards Work Force**	5,176	5,079	4,982	1.9%	97

* Includes all employees in pay status and Academy trainees

**In FY 07 AVS realigned 29 Aircraft Certification and 144 Flight Standards Information Technology Analysts into the Office of Quality, Integration and Executive Service

Data as of June 2010
 Source ATC-F (202) 267-9123
 Source AQS-400 (202) 267-8980

Labor Relations

	BARGAINING UNITS	LABOR AGREEMENTS	EMPLOYEES REPRESENTED
Unions.....	41	28	36,665
AFGE	9	6	1,933
AFSCME (HQ)	1	1	2,299
LIUNA	1	1	176
NAGE	3	3	317
NATCA	15	9	19,835
NFFE	3	2	648
PAACE	4	3	377
PASS	5	4	11,080
Unrepresented			1,045
Nonbargaining			10,704
Total employees			48,414

AFGE --American Federation of Government Employees
 AFSCME --American Federation of State County and Municipal Employees
 LIUNA --Laborer's International Union of North America
 NAGE --National Association of Government Employees
 NACTA --National Air Traffic Controllers Association
 NFFE --National Federation of Federal Employees
 PAACE --Professional Association of Aeronautical Center Employees
 PASS --Professional Aviation Safety Specialists

Source AHL-400
 (202) 267-3548

As of 09/30/10

FAA Finances
(In Millions of Dollars)

	FY 2009	FY 2010	FY 2011
	Actual ¹	Enacted	Requested
Budget Authority (BA)			
Grants-in-Aid (Contract Auth/Approp)	4 907	3,606	3,515
Research, Engineering, & Development	171	191	190
Facilities and Equipment	2,942	2 936	2 970
Operations	9,046	9 350	9,793
Total.....	17,066	16,083	16,468
Obligations Incurred—Operations			
Appropriation by Line of Business			
Air Traffic Organization (ATO)	7,095	7,299	7 631
Aviation Safety (AVS)	1,170	1 234	1,294
Commercial Space Transportation (AST)	14	15	16
Staff Offices (SO)	764	802	852
Total	9,043	9,360	9,793
Airport Grant Obligations (NET)			
Primary Airports & Cargo	968	939	939
States/Territories/Insular/Alaska Supp	698	697	696
Carryover Entitlements	623	568	568
Discretionary Fund	593	675	671
Small Airport Fund	503	499	499
Total.....	3,385	3,378	3,373
Total FAA Outlays	15,418	16,649	16,409
Trust Fund Receipts from Excise Taxes and Interest²			
Transportation of Persons by Air	7,466	8,627	9 141
Transportation of Property	470	537	556
Use of International Air Facilities	2,187	2,055	2 183
Aviation Fuel Commercial Use	552	376	393
Aviation Fuel (Other Than Gas)	(25)	252	274
Aviation Gasoline	29	48	49
Total Tax Revenue	10,679	11,895	12 596
Revenue Refund	(110)	(97)	(103)
Net Tax	10,569	11,798	12,493
Interest revenue	308	216	246
Total Tax & Interest Revenue	10,987	12,111	12,842

Numbers may not add due to rounding

¹ Includes funding provided by the American Recovery and Reinvestment Act of 2009. This act provides supplemental funding of \$200 million to Facilities and Equipment and \$1.1 billion for Grants in Aid to Airports.

² Data Source for FY 2010 and 2011 projections, Department of Treasury Office of Tax Analysis, Revenue Estimating Division

As of 01/15/10

FAA NAS Operational Facilities
(As of January 1, 2010)

	2009	2008	2007
NAS Operational Facilities¹.....	63,846	60,851	59,140
Communications	19,269	19,493	18,823
Automation	1,593	1,517	1,380
Infrastructure	20,016	19,356	17,848
Mission Support	4,080	4,102	4,173
Navigation	12,243	12,359	12,362
Surveillance	1,779	1,732	1,900
Weather	2,264	2,292	2,674
Air Traffic Control Facilities²			
Air Route Traffic Control Center	21	21	21
Airport Traffic Control Tower	512	512	512
Flight Service ³	24	30	71
Flight Service Stations	21	27	47
Automated Flight Service Stations	3	3	24

¹ Includes All Responsibility Codes

² Included in NAS operational facilities

³ Flight Service include Flight Service Stations and Automated Flight Service Stations

As of 01/01/10

Source AOP-200
(202) 267-5288

FAA Officials

Washington Headquarters

Routing Symbol	Officials
AOA	Administrator J. Randolph Babbitt, 202-267-3111 David Weingart, Chief of Staff, 202-267-7416 Vacant, Senior Counsel to AOA, 202-267-7417
ADA*	Deputy Administrator Michael P. Huerta, 202-267-8111 Vacant, Senior Advisor, 202-267-7417
AJO	Chief Operating Officer, Air Traffic Organization Henry P. Krakowski, 202-493-5602
AJF*	Finance Business Unit Senior Vice President, Mark House, Acting, 202-267-3022
AJP	NextGen and Operations Planning Business Unit Senior Vice President, Victoria Cox, 202-267-7111
AJG	Strategy and Performance Business Unit Senior Vice President, John Pipes, 202-267-5724
AJN	Operations Business Unit Senior Vice President, Richard L. Day, 202-267-7224
ABA*	Assistant Administrator for Financial Services Ramesh K. Punwani, CFO, 202-267-9105 Deputy, Vacant, 202-267-3882
ABU	Office of Budget Director, Carol Rose, 202-267-8010
AFC	Office of Financial Controls Director, Carl Burrus, 202-267-7140
AFO	Office of Financial Operations Director, Peter J. Basso, 202-267-8242
AFR	Office of Financial Reporting & Accountability Director, Allison Ritman, 202-267-3018
ACR*	Assistant Administrator for Civil Rights Fanny Rivera, 202-267-3254 Deputy, Julia Rhodes, Acting, 202-267-3264
AEP*	Asst. Admin. for Aviation Policy, Planning & Environment Julie Oettinger, Acting, 202-267-3927 Deputy, Nancy LoBue, 202-267-7954
AEE*	Office of Environment and Energy Director, Carl Bureson, 202-267-3576
APO	Office of Aviation Policy and Plans Director, Nan Shellabarger, 202-267-3274

* Updated this issue
As of 09/07/10

Source ABA-1
(202) 267-9105

FAA Officials

Washington Headquarters--(Cont)

Routing Symbol	Officials
AGC*	Chief Counsel J. David Grizzle, 202-267-3222 Deputy Chief Counsel for Policy and Adjudication James W. Whitlow, 202-267-3773 Deputy Chief Counsel for Operations Vacant, 202-267-3773
AEE*	<i>Office of Audit and Evaluation</i> Director, H. Clayton Foushee, 202-267-9440
AGI	Asst. Administrator for Government & Industry Affairs Roderick D. Hall, 202-267-3277 Deputy, Vacant, 202-267-8211
AHR	Asst. Administrator for Human Resource Management Ventris C. Gibson, 202-267-3466 Deputy, Catherine Emerson, 202-267-3850
AHA	<i>Office of the Accountability Board</i> Executive Director, Maria Fernandez-Greczmiel, 202-267-3065
AHD*	<i>Office of Corporate Learning</i> Executive Director, Jana Murphy, 202-493-4507
AHF*	<i>HR Field Operations</i> Executive Director, Ken Nephew, 817-222-5809
AHL*	<i>Office of Labor Management Relations</i> Executive Director, Kimberly Moseley, 202-267-7306
AHP*	<i>Office of Human Resources Management Programs and Policies</i> Executive Director, Angela Porter, 202-267-3850
AIO	Assistant Administrator for Information Services David M. Bowen, CIO, 202-493-4570 <i>Office of Information Systems Security</i> Director, Christopher Garcia, Acting, 202-267-7104
AIS*	<i>Office of Information Technology Optimization</i> Director, Cheryl Rogers, 202-267-9477
AOT	<i>Office of Information Technology Enterprise</i> Director, Robert Rovinsky, 202-493-4019
AES	<i>Office of Information Technology Research and Development</i> Chief Technology Officer, Doug Roseboro, Acting, 202-385-8054
ARD	Assistant Administrator for Communications Sasha N. Johnson, 202-267-3883 Deputy, External Communications, Laura Brown, 202-267-3883 Deputy, Internal Communications, Carmen Marco, 202-267-9499
AOC*	Asst. Administrator for International Aviation Julie Oettinger, 202-267-3927 Deputy, Di Reimold, 202-385-8900
API*	Assistant Administrator for Regions/Center Operations Paula Lewis, 202-267-7369 Deputy, Michael J. Cirillo, 202-267-7369
ARC	<i>Aviation Logistics Organization</i> Director, Mamie Mallory, 202-267-7369
ALO	

FAA Officials

Washington Headquarters--(Cont.)

Routing Symbol	Officials
ASH*	Claudio Manno, 202-267-7211 Deputy, Thomas D Ryan, 202-267-7211
ADG	<i>Office of Hazardous Materials</i> Director, Christopher Bonanti, 202-267-9864
AEO	<i>Office of Emergency Operations, Communications and Investigations</i> Director, Chns Rocheleau, 202-267-8075
AHS	<i>Office of Field Operations</i> Director, Thomas D Ryan, 202-267-7211
AIN	<i>Office of Security</i> Director, Bruce Herron, 202-267-7714
ARP*	Associate Administrator for Airports Catherine M. Lang, Acting, 202-267-9471 Deputy, Benito DeLeon, Acting, 202-267-9471
AAS	<i>Office of Airport Safety and Standards</i> Director, Michael J O'Donnell, 202-267-3053
ACO	<i>Office of Airport Compliance and Field Operations</i> Director, Randell S Fiertz, 202-267-3085
APP*	<i>Office of Airport Planning & Programming</i> Director, Elliott Black, Acting, 202-267-8775
AST	Dr. George C. Nield, 202-267-7793 Deputy, James E VanLaak, 202-267-7848
AVS	Associate Administrator for Aviation Safety Peggy Gilligan, 202-267-3131 Deputy, John J Hickey, 202-267-7804
AAM	<i>Office of Aviation Medicine</i> Director, Frederick Tilton, MD, 202-267-3535
AFS	<i>Flight Standards Service</i> Director, John Allen, 202-267-8237
AIR	<i>Aircraft Certification Service</i> Director, Dorenda Baker, 202-267-8235
AOV	<i>Office of Air Traffic Oversight</i> Director, Anthony Ferrante, 202-267-5202
AQS	<i>Quality, Integration and Executive Service</i> Director, Tina Amersihn, 202-493-5717
ARM	<i>Office of Rulemaking</i> Director, Pamela Hamilton-Powell, 202-267-9677
AVP*	<i>Office of Accident Investigation and Prevention</i> Director, Jay J Pardee, 202-267-9612
Duty Officer	(202) 267-3333

FAA Officials

Major Field Organizations

Routing Symbol	Officials
AAL	Alaskan Region, Regional Administrator Robert N. Lewis, 907-271-5645 222 West 7th Avenue, Box 14 Anchorage, Alaska 99513-7587 Duty Officer, 907-271-5936
ACE	Central Region, Regional Administrator Joseph N. Miniace, 816-329-3050 901 Locust Kansas City, Missouri 64106 Duty Officer, 816-329-3000
ACT	William J. Hughes Technical Center, Director Wilson N. Felder, Ph.D., 609-485-6641 Atlantic City International Airport New Jersey 08405 Duty Officer, 609-485-6482
AEA	Eastern Region, Regional Administrator Carmine Gallo, 718-553-3000 1 Aviation Plaza 159-30 Rockaway Blvd. Jamaica, New York 11434-4809 Duty Officer, 718-553-3100
AGL	Great Lakes Region, Regional Administrator Barry D. Cooper, 847-294-7294 2300 East Devon Avenue Des Plaines, Illinois 60018 Duty Officer, 847-294-8400
AMC	Mike Monroney Aeronautical Center, Director Lindy Ritz, 405-954-4521 6500 South MacArthur Oklahoma City, Oklahoma 73125 Duty Officer, 405-954-3583

FAA Officials

Major Field Organizations--(Cont.)

ANE **New England Region, Regional Administrator**
Amy Lind Corbett, 781-238-7020
12 New England Executive Park
Burlington, Massachusetts 01803
Duty Officer, 781-238-7001

ANM **Northwest Mountain Region, Regional Administrator**
Kathryn Vernon, 425-227-2001
1601 Lind Avenue, S.W.
Renton, Washington 98055-4056
Duty Officer, 425-227-2000

ASO **Southern Region, Regional Administrator**
Doug Murphy, 404-305-5000
1701 Columbia Avenue
College Park, Georgia 30337
Duty Officer, 404-305-5180

ASW **Southwest Region, Regional Administrator**
Teresa Bruner, 817-222-5001
2601 Meacham Blvd.
Ft. Worth, Texas 76137-4298
Duty Officer, 817-222-5006

AWP **Western-Pacific Region, Regional Administrator**
William C. Withycombe, 310-725-3550
15000 Aviation Boulevard
Hawthorne, California 90261
Duty Officer, 310-725-3300

FAA Officials

International Area Offices

Routing Symbol	Officials
AEU*	Europe, Africa, & Middle East Area Office, Director Steve Creamer, 011-322-508-2700 American Embassy, Brussels PSC 82 Box 002 APO AE 09724-1011
AWH*	Western Hemisphere Area Office, Director Dawn Veatch, 202-385-8900 8600 NW 38th Street Miami, FL 33168
APC*	Asia-Pacific Area Office, Director Jeri Allee, 011-65-6543-1952 American Embassy 27 Napier Road Singapore 258508

**FEDERAL AVIATION ADMINISTRATION
FLIGHT PLAN 2009-2013**

INCREASED SAFETY

Goal: *Achieve the lowest possible accident rate and constantly improve safety.*

1. Reduce commercial air carrier fatalities.
2. Reduce general aviation fatalities.
3. Reduce the risk of runway incursions.
4. Ensure the safety of commercial space launches.
5. Enhance the safety of FAA's air traffic systems.
6. Implement a Safety Management System (SMS) for the FAA.

Performance Targets:

Obj. 1 Cut the rate of fatalities per 100 million persons on board in half by FY 2025.

Obj. 2 Reduce the fatal accident rate per 100,000 flight hours by 10 percent over a 10-year period (2009-2018).

Obj. 2 By the end of FY 2009, reduce accidents in Alaska for general aviation and all Part 135 operations from the 2000-2002 average of 130 accidents per year to no more than 99 accidents per year.

Obj. 3 By FY 2010, reduce Category A and B (most serious) runway incursions to a rate of no more than 0.450 per million operations, and maintain or improve through FY 2013.

Obj. 3 By the end of FY 2013, reduce total runway incursions by 10 percent from the FY 2008 baseline.

Obj. 4 No fatalities, serious injuries, or significant property damage to the uninvolved public during licensed or permitted space launch and reentry activities.

As of 12/31/08

Source: APO-120
(202) 267-3220

INCREASED SAFETY Performance Targets (Continued)

Obj. 5 Limit Category A and B (most serious) operational errors to a rate of no more than 1.95 per million activities by FY 2012 and maintain through FY 2013.

Obj. 6 In FY 2010, implement SMS in the Air Traffic Organization, Office of Aviation Safety, and Office of Airports. In FY 2012, implement SMS policy in all appropriate FAA organizations.

GREATER CAPACITY

Goal: *Work with local governments and airspace users to provide increased capacity and better operational performance in the United States airspace system that reduces congestion and meets projected demand in an environmentally sound manner.*

Objectives:

1. Increase capacity to meet projected demand and reduce congestion.
2. Increase reliability and on-time performance of scheduled carriers.
3. Address environmental issues associated with capacity enhancements.

Performance Targets:

Obj. 1 Achieve an average daily airport capacity for the 35 OEP airports of 103,068 arrivals and departures per day by FY 2011 and maintain through FY 2013.

Obj. 1 Achieve an average daily airport capacity for the 7 Metro areas of 39,484 arrivals and departures per day by FY 2009 and maintain through FY 2013.

Obj. 1 Commission nine new runway/taxiway projects, increasing the annual service volume of the 35 OEP airports by at least 1 percent annually, measured as a five-year moving average, through FY 2013.

Obj. 1 Sustain adjusted operational availability of 99.7 percent for the reportable facilities that support the 35 OEP airports through FY 2013.

Obj. 2 Achieve a NAS on-time arrival rate of 88 percent at the 35 OEP airports and maintain through FY 2013.

Obj. 3 Reduce the number of people exposed to significant noise by 4 percent per year through FY 2013, as measured by a three-year moving average.

Obj. 3 Improve aviation fuel efficiency by another 1 percent over the FY 2008 level through FY 2009, and 1 percent each subsequent year through FY 2013 to 11 percent, as measured by a three-year moving average of the fuel burned per revenue mile flown.

INTERNATIONAL LEADERSHIP

Goal: *Increase the safety and capacity of the global civil aerospace system in an environmentally sound manner.*

Objectives:

1. Promote improved safety and regulatory oversight in cooperation with bilateral, regional, and multilateral aviation partners.
2. Promote seamless operations around the globe in cooperation with bilateral, regional, and multilateral aviation partners.

Performance Targets:

Obj. 1 Work with the Chinese aviation authorities and industry to adopt 27 proven Commercial Aviation Safety Team (CAST) safety enhancements by FY 2011. This supports China's efforts to reduce commercial fatal accidents to a rate of 0.030 fatal accidents per 100,000 departures by FY 2012.

Obj. 1 By FY 2013, arrange commitments for external funding for at least 35 aviation development projects (7 per year).

Obj. 1 By FY 2013, work with at least 18 countries or regional organizations to develop aviation leaders to strengthen the global aviation infrastructure.

Obj. 2 By FY 2013, expand the use of NextGen performance-based systems and concepts to five priority countries.

ORGANIZATIONAL EXCELLENCE

GOAL: Ensure the success of the FAA's mission through stronger leadership, a better-trained and safer workforce, enhanced cost-control measures, and improved decision-making based on reliable data.

Objectives:

1. Implement human resource management practices to attract and retain a highly skilled, diverse workforce and provide employees a safe, positive work environment.
2. Make the organization more effective with stronger leadership, a results-oriented, high performance workforce, and a culture of accountability.
3. Improve financial management while delivering quality customer service.
4. Make decisions based on reliable data to improve our overall performance and customer satisfaction.
5. Enhance our ability to respond to crises rapidly and effectively, including security-related threats and natural disasters.

Performance Targets:

Obj. 1 By FY 2010, 80 percent of FAA external hires will be filled within OPM's 45-day standard for government-wide hiring.

Obj. 1 Reduce the total workplace injury and illness case rate to no more than 2.44 per 100 employees by the end of FY 2011, and maintain through FY 2013.

Obj. 1 Reduce grievance processing time by 30 percent (to an average of 102 days) by FY 2010 over the FY 2006 baseline of 146 days, and maintain the reduction through FY 2013.

Obj. 1 Maintain the air traffic control workforce at, or up to 2 percent above, the projected annual totals in the Air Traffic Controller Workforce Plan.

Obj. 1 Maintain the aviation safety workforce within 1 percent of the projected annual totals in the Aviation Safety Workforce Plan.

ORGANIZATIONAL EXCELLENCE Performance Targets (Continued)

Obj. 3 Organizations throughout the agency will continue to implement cost efficiency initiatives such as: 10-15 percent savings for strategic sourcing for selected products and services; by the end of FY 2009, reduce leased space for Automated Flight Service Stations from approximately 510,000 square feet to approximately 150,000 square feet; annual reduction of \$15 million in Information Technology operating costs; and by FY 2010, reduce overhead costs 5-10 percent through automation of invoice processing.

Obj. 3 Obtain an unqualified opinion on the agency's financial statements (Clean Audit with no material weaknesses) each fiscal year.

Obj. 4 In FY 2009, 90 percent of Major System Investments are within 10 percent variance of current baseline total budget estimate at completion (BAC).

Obj. 4 In FY 2009, 90 percent of Major System Investments selected annual milestones are achieved.

Obj. 4 Maintain the annual average of FAA surveys on the American Customer Satisfaction Index at or above the average Federal Regulatory Agency score.

Obj. 4 Achieve zero cyber security events that disable or significantly degrade FAA services.

Obj. 5 Exceed Federal Emergency Management Agency continuity readiness levels by 5 percent.