



U.S. Department  
of Transportation  
**Federal Aviation  
Administration**

# **ADMINISTRATOR'S FACT BOOK**

**April 2007**

Produced by:  
Assistant Administrator for Financial Services

Website:  
[http://www.faa.gov/about/office\\_org/headquarters\\_offices/aba/  
admin\\_factbook/](http://www.faa.gov/about/office_org/headquarters_offices/aba/admin_factbook/)

## **FAA MISSION**

*To provide the safest, most efficient  
aerospace system in the world.*

## **FAA VISION**

*We continue to improve the safety and  
efficiency of flight. We are responsive  
to our customers. We are accountable  
to the public.*

## Table of Contents

**FAA Vision and Mission ..... Inside Front Cover**

**FAA Values ..... Inside Back Cover**

### **Safety**

Aviation Accidents by Type of Operations.....	3*
Aviation Accident Rates by Type of Operation.....	4*
Airspace Incidents by Incident Type.....	5*
Airspace Incident Rates by Incident Type.....	6*
NTSB U.S. Transportation Fatalities.....	7

### **FAA Air Traffic**

FAA Air Traffic Activity.....	8*
Air Route Traffic Control Center Activity.....	9*
50 Busiest FAA Air Traffic Control Towers.....	10*
50 Busiest Approach Control Facilities.....	12*
Automated Flight Service Station Activity.....	14*

### **Airports**

Number of U.S. Airports.....	16*
National Airspace Systems Delays.....	17*

### **Aircraft**

U.S. Air Carrier Activity.....	18*
U.S. General Aviation Activity.....	19*
Aircraft Certification Service.....	20

### **Industry Trends**

Scheduled U.S. Air Carrier Traffic & Fin. Trends.....	21
Aviation Forecasts.....	22

### **Commercial Space Transportation**

AST Licensing and Industry Activity.....	23*
U.S. Commercial Space Launch Schedule.....	24*

### **Airmen**

Active Pilots and Nonpilots.....	25
FAA Organizational Chart.....	Center Fold*

**Table of Contents (cont.)**

FAA Regional Boundaries Map.....28

**FAA Resources**

FAA Employment ..... 29\*  
FAA Percent Minority and Women Employment..... 30\*  
FAA Major Work Force Employment ..... 31\*  
Labor Relations ..... 32\*

FAA Finances..... 33\*  
FAA NAS Operational Facilities..... 34\*

**Organization**

FAA Officials—Washington Headquarters..... 35\*  
FAA Officials—Major Field Organizations.....38  
FAA Officials—International Offices ..... 40\*  
FAA Flight Plan 2007-2011 ..... 41

---

For further information call ABA-1 (202-267-9105)

\*Updated this issue

Distribution: A-WXYZE-3; A-FOF-O(STD)

### Aviation Accidents by Type of Operation

Type of Operation	Year	Jan	Feb	Mar	Apr	May	Jun	Jul	Aug	Sep	Oct	Nov	Dec	Year Total
Large Air Carrier	2005	4	1	5	1	3	7	1	4	1	5	3	4	39
	2006	1	2	2	5	2	2	0	0	0	0	0	0	14
Commuter	2005	0	1	0	1	1	0	0	0	1	0	0	2	6
	2006	0	1	0	1	1	0	0	0	0	0	0	0	3
Air Taxi	2005	4	9	3	3	2	6	12	5	5	8	5	5	67
	2006	10	2	7	3	6	3	0	0	0	0	0	0	31
General Aviation	2005	94	86	120	143	166	188	196	196	161	127	92	99	1,668
	2006	86	78	101	143	145	109	0	0	0	0	0	0	662
Rotorcraft*	2005	11	11	13	11	21	24	25	19	28	18	10	7	198
	2006	11	11	9	16	29	14	12	19	12	11	14	8	166

\* Part 135 and US registered general aviation rotorcraft accidents.

Note: Preliminary data and subject to change.  
As of: 03/09/07

Source: AAI-220  
(202) 267-3279

### Aviation Accident Rates by Type of Operation

Type of Operation	2003		2004		2005		2006		% Chg 06-05	
	Number	Rate	Number	Rate	Number	Rate	Number	Rate	Number	Rate
Large Air Carriers.....	54	.31	30	.16	40	.21	31	.16	-23%	-23%
Commuter.....	2	0.62	4	1.32	6	2.03	3	1.07	-50%	-47%
Air Taxi.....	74	2.55	66	2.04	66	1.73	54	1.50	-18%	-13%
General Aviation.....	1,739	6.75	1,617	6.49	1,669	7.20	1,515	6.64	-9%	-8%

Accident Rates are per 100,000 Flight Hours. Flight hours, miles and departures are compiled by FAA.  
Rotorcraft rates discontinued, currently under review.

Note: 2006 data preliminary.  
As of: 03/15/07

Source: NTSB  
[www.nts.gov/aviation/stats.htm](http://www.nts.gov/aviation/stats.htm)

### Airspace Incidents by Incident Type

Incident Type	Year	Jan	Feb	Mar	Apr	May	Jun	Jul	Aug	Sep	Oct	Nov	Dec	Year Total
Near Midair Collisions	2005	8	6	15	15	9	11	15	11	16	9	11	11	137
	2006	9	5	8	14	11	4	8	16	13	10	5	3	106
Pilot Deviations	2005	135	152	187	187	165	204	207	260	199	197	204	151	2,248
	2006	161	199	214	245	241	211	227	243	275	293	235	179	2,723
Operational Errors	2005	90	215	150	91	104	114	131	129	130	126	114	108	1,502
	2006	95	119	109	106	114	109	115	125	95	126	112	79	1,304
Vehicle Pedestrian Deviations	2005	15	17	26	23	23	14	23	28	31	24	25	20	269
	2006	13	11	27	21	21	23	18	27	21	20	15	20	237
Surface Incidents	2005	54	64	83	80	80	74	78	115	89	88	77	66	948
	2006	62	68	93	80	78	84	93	93	109	90	68	70	988
Runway Incursions*	2005	18	22	28	26	33	29	36	35	30	33	21	25	336
	2006	21	25	26	25	29	32	35	33	25	0	0	0	251

Note: Preliminary data and subject to change.

Source: ATO-A (IT)  
 (202) 385-4802  
 \*ATO-S  
 (202) 385-4788

As of: 03/19/07  
 \*As of: 09/30/06

### Airspace Incident Rates by Incident Type

Incident Type	2003		2004		2005		2006		Percent Change	
	Number	Rate	Number	Rate	Number	Rate	Number	Rate	2005 - 2006 (4)	
									Number	Rate
Operational Errors (1).....	1,211	.79	1,214	.77	1,502	.96	1,304	.93	-13%	-3%
Pilot Deviations (2).....	2,679	1.63	2,621	1.59	2,248	1.37	2,723	1.65	21%	20%
Surface Incidents (3).....	921	1.47	870	1.38	948	1.51	988	1.74	4%	15%

9

(1) Per 100,000 Facility Activities

(2) Per 100,000 Flight Activities

(3) Per 1,000,000 Airport Operations

(4) Calculations use fifteen decimal places for rates (rounded two places for display).

Note: 2006 data preliminary and subject to change.

Source: ATO-A (IT)

(202) 385-4802

As of: 03/19/07



**National Transportation Safety Board  
2004-2005 U.S. Transportation Fatalities**

	2004	2005 <sup>1</sup>
<b>Highway</b>		
Passenger cars.....	19,192	18,440
Light Trucks and Vans.....	12,674	12,975
Pedestrians.....	4,675	4,881
Motorcycles.....	4,028	4,553
Pedalcycles <sup>2</sup> .....	727	784
Medium and heavy trucks.....	766	803
Buses.....	42	58
All Other <sup>3</sup> .....	732	949
<b>Total.....</b>	<b>42,836</b>	<b>43,443</b>
<b>Grade Crossings <sup>4</sup></b>	<b>369</b>	<b>356</b>
<b>Rail</b>		
Intercity <sup>5</sup>		
Trespassers and nontrespassers. <sup>6</sup> .....	584	555
Employees and contractors.....	29	29
Passengers on trains.....	3	16
Light, heavy, and commuter rail. <sup>7</sup> .....	200	189
<b>Total.....</b>	<b>816</b>	<b>789</b>
<b>Marine</b>		
Recreational Boating.....	676	697
Cargo Transport.....	26	12
Commercial fishing. <sup>8</sup> .....	42	41
Commercial Passengers.....	21	19
<b>Total.....</b>	<b>765</b>	<b>769</b>
<b>Aviation</b>		
General Aviation.....	558	562
Airlines.....	14	22
Air Taxi.....	64	18
Commuter.....	0	0
Foreign/Unregistered. <sup>9</sup> .....	16	14
<b>Total.....</b>	<b>652</b>	<b>616</b>
<b>Pipeline</b>		
Gas.....	18	17
Liquids.....	5	2
<b>Total.....</b>	<b>23</b>	<b>19</b>
<b>GRAND TOTAL.....</b>	<b>45,092</b>	<b>45,636</b>

<sup>1</sup> Numbers for 2005 are preliminary estimates. Aviation data from NTSB; marine data from Department of Homeland Security; all other data from DOT. <sup>2</sup> Includes bicycles or other cycles. <sup>3</sup> Includes vehicle occupant fatalities in other vehicle types, ex. farm or construction equipment. <sup>4</sup> Grade crossing fatalities are not counted as a separate category for determining the grand totals because they are included in the highway and rail categories, as appropriate. <sup>5</sup> Data reported to Federal Rail Administration (FRA). <sup>6</sup> Includes persons on railroad property with and without permission. Does not include motor vehicle occupants killed at grade crossings. <sup>7</sup> Data reported to the FTA. Fatalities for commuter rail operations may also be reported to the FRA and may be included in the intercity railroad fatalities. <sup>8</sup> Refers to only operational fatalities. <sup>9</sup> Includes non-U.S. registered aircraft involved in accidents in the U.S.

# Air Traffic

## FAA Air Traffic Activity (In Thousands)

Aircraft Handled by	Jan-Dec 2006*	Jan-Dec 2005
<b>FAA ARTCC's</b>		
Air Carrier.....	24,486	24,871
Air Taxi.....	9,437	10,007
General Aviation.....	8,255	8,313
Military.....	4,122	3,991
<b>TOTAL....</b>	<b>46,300</b>	<b>47,182</b>
<b>Airport Operations</b>		
<b>Logged by FAA Towers</b>		
Air Carrier.....	13,132	13,253
Air Taxi.....	10,153	10,770
General Aviation.....	19,787	20,490
Military.....	1,679	1,689
<b>TOTAL....</b>	<b>44,751</b>	<b>46,202</b>
<b>Instrument Operations</b>		
<b>Logged by FAA Towers</b>		
Air Carrier.....	14,108	14,153
Air Taxi.....	11,948	12,654
General Aviation.....	17,097	17,313
Military.....	2,642	2,764
<b>TOTAL....</b>	<b>45,795</b>	<b>46,884</b>
<b>Flight Services</b>		
<b>Logged by: **</b>		
Flight Service Stations.....	852	895
Automated Flight Service Stations.....	19,744	22,519
<b>TOTAL....</b>	<b>20,596</b>	<b>23,414</b>

\*Preliminary  
As of: 03/15/07  
\*\*As of: 03/15/07

Source: APO-130  
(202) 267-3350  
ATO-A/AJA  
(202) 385-4734

## Air Route Traffic Control Center Activity

CY 2005 Rank	Center	Aircraft Handled (000's)	
		Jan-Dec 2006*	Jan-Dec 2005
1	Atlanta, GA.....	3,135	3,236
2	Leesburg, VA.....	2,907	3,079
3	New York, NY.....	2,970	3,074
4	Cleveland, OH.....	2,879	3,020
5	Chicago, IL.....	2,845	2,898
6	Indianapolis, IN.....	2,694	2,884
7	Jacksonville, FL.....	2,557	2,557
8	Miami, FL.....	2,507	2,501
9	Memphis, TN.....	2,288	2,308
10	Los Angeles, CA.....	2,316	2,288
11	Minneapolis, MN.....	2,073	2,142
12	Fort Worth, TX.....	1,619	2,134
13	Houston, TX.....	2,144	2,122
14	Kansas City, KS.....	2,050	2,083
15	Nashua, NH.....	1,856	1,869
16	Denver, CO.....	1,865	1,836
17	Albuquerque, NM.....	1,730	1,762
18	Oakland, CA.....	1,696	1,703
19	Salt Lake City, UT.....	1,505	1,552
20	Seattle, WA.....	1,301	1,306
21	Anchorage, AK.....	578	623
22	Guam **.....	242	206

\*Preliminary

\*\*Center Radar Approach Control (CERAP)

Source: APO-130  
(202) 267-3350

As of: 03/20/07

## 50 Busiest FAA Airport Traffic Control Towers

CY 2005 Rank	Tower and State	Airport Operations (000's)	
		Jan-Dec 2006*	Jan-Dec 2005
1	Hartsfield-Jackson Atl Intl, GA.....	976	980
2	Chicago/O'Hare Intl., IL.....	959	972
3	Dallas/Ft. Worth Intl., TX.....	703	718
4	Los Angeles Intl, CA.....	657	651
5	Las Vegas/McCarran Intl, NV.....	619	614
6	Denver International, CO.....	610	568
7	Phoenix Sky Harbor Intl, AZ.....	547	564
8	Houston/G Bush Intercont'l, TX.....	603	564
9	Washington Dulles Intl, VA.....	424	553
10	Philadelphia Intl, PA.....	516	536
11	Minneapolis-St. Paul Intl, MN.....	476	532
12	Charlotte/Douglas Intl, NC.....	511	523
13	Detroit Metro Wayne Co., MI.....	482	523
14	Covington/Cincinnati Intl, KY.....	346	495
15	Salt Lake City Intl, UT.....	419	455
16	Newark International, NJ.....	449	441
17	Boston/Logan Intl, MA.....	416	422
18	Van Nuys, CA.....	395	411
19	La Guardia, NY.....	406	406
20	Memphis International, TN.....	388	395
21	Miami International, FL.....	387	381
22	Phoenix-Deer Valley, AZ.....	407	378
23	Santa Ana/John Wayne, CA.....	363	367
24	John F. Kennedy Intl, NY.....	397	363
25	Orlando International, FL.....	356	360

\*Preliminary

Source: APO-130  
(202) 267-3350

As of: 03/20/07

## 50 Busiest FAA Airport Traffic Control Towers

CY 2005 Rank	Tower and State	Airport Operations (000's)	
		Jan-Dec 2006*	Jan-Dec 2005
26	Long Beach/Daugherty, CA.....	369	358
27	San Francisco Int'l, CA.....	359	354
28	Metropolitan Oakland Int'l, CA.....	336	348
29	Denver/Centennial, CO.....	320	346
30	Tulsa/Riverside, OK.....	235	347
31	Seattle Tacoma Int'l, WA.....	340	342
32	Fort Lauderdale/Hollywood, FL.....	297	331
33	Honolulu International, HI.....	317	331
34	Orlando/Sanford, FL.....	319	320
35	Anchorage International, AK.....	303	316
36	Baltimore/Wash. Int'l, MD.....	308	310
37	Seattle/Boeing Field, WA.....	300	300
38	Lambert-St. Louis Int'l, MO.....	282	297
39	Chicago Midway, IL.....	299	291
40	Tucson International, AZ.....	270	285
41	Washington National, DC.....	278	278
42	Mesa/Falcon Field, AZ.....	249	270
43	Tampa International, FL.....	257	270
44	Pittsburgh International, PA.....	235	269
45	Portland International, OR.....	260	262
46	Cleveland Hopkins Int'l, OH.....	249	260
47	Raleigh-Durham Int'l, NC.....	245	249
48	San Diego/Montgomery Field, CA.....	233	245
49	Grand Forks International, ND.....	229	244
50	Houston Hobby, TX.....	237	242

## 50 Busiest Radar Approach Control Facilities

CY 2005 Rank	Facilities/State	Instrument Ops (000s)	
		Jan-Dec 2006*	Jan-Dec 2005
1	Southern Calif. TRACON, CA.....	2,142	2,129
2	New York TRACON, NY.....	2,091	2,066
3	Potomac TRACON, DC.....	1,715	1,887
4	North California TRACON, CA.....	1,578	1,612
5	Chicago TRACON, IL.....	1,417	1,425
6	Atlanta TRACON, GA.....	1,425	1,393
7	Dallas/Ft. Worth, TRACON, TX.....	1,220	1,221
8	Houston TRACON, TX.....	954	923
9	Miami International, FL.....	914	919
10	Phoenix TRACON, AZ.....	718	780
11	Denver TRACON, CO.....	803	771
12	Philadelphia International, PA.....	713	738
13	Boston TRACON, MA.....	711	730
14	Detroit TRACON, MI.....	660	715
15	Las Vegas TRACON, NV.....	718	689
16	Minneapolis TRACON, MN.....	609	669
17	Charlotte/Douglas Int'l, NC.....	632	652
18	Orlando International, FL.....	704	637
19	Covington/Cincinnati Int'l, KY.....	478	637
20	San Juan CERAP, PR.....	617	607
21	Tampa International, FL.....	550	576
22	Seattle/Tacoma TRACON, WA.....	521	549
23	Honolulu Control Facility, HI.....	558	549
24	Salt Lake City TRACON, UT.....	502	547
25	Memphis International, TN.....	458	463

\* Preliminary

Source: APO-130  
(202) 267-3350

As of: 03/20/07

## 50 Busiest Radar Approach Control Facilities

CY 2005 Rank	Facilities/State	Instrument Ops (000's)	
		Jan-Dec 2006*	Jan-Dec 2005
26	St Louis TRACON, MO.....	442	460
27	Jacksonville Int'l, FL.....	419	430
28	Daytona Beach Int'l, FL.....	404	424
29	San Antonio Int'l, TX.....	377	386
30	Port Columbus Int'l, OH.....	380	384
31	Pittsburgh International, PA.....	328	372
32	Cleveland Hopkins Int'l, OH.....	353	369
33	Palm Beach International, FL.....	356	361
34	Corpus Christi, TX.....	345	346
35	Dayton International, OH.....	326	344
36	Portland TRACON, OR.....	330	333
37	Indianapolis International, IN.....	328	332
38	Pensacola TRACON, FL.....	292	327
39	Anchorage TRACON, AK.....	317	323
40	Austin, TX.....	323	319
41	Raleigh-Durham Int'l, NC.....	318	319
42	Milwaukee/Gen Mitchell Intl, WI.....	299	315
43	Nashville International, TN.....	297	310
44	Norfolk International, VA.....	291	297
45	Kansas City International, MO.....	288	285
46	Tucson TRACON, AZ.....	298	285
47	Louisville Intl/Standiford, KY.....	266	273
48	Tulsa International, OK.....	233	272
49	Wichita Mid Continent.....	269	262
50	Yankee TRACON, CT.....	250	255

## Automated Flight Service Stations Activity

CY 2005 Rank	AFSS/State	Flight Services (000's)	
		Jan-Dec 2006*	Jan-Dec 2005
1	Miami AIFSS, FL.....	821	1,046
2	St. Petersburg, FL.....	975	901
3	Leesburg, VA.....	671	721
4	Lansing, MI.....	641	641
5	Fort Worth, TX.....	652	637
6	Prescott, AZ.....	603	575
7	Princeton, MN.....	592	539
8	Macon, GA.....	473	532
9	Raleigh, NC.....	514	520
10	Seattle, WA.....	574	516
11	Denver, CO.....	452	488
12	Conroe, TX.....	507	473
13	Bridgeport, CT.....	29	470
14	Kankakee, IL.....	556	469
15	San Angelo, TX.....	259	459
16	Green Bay, WI.....	423	444
17	Kenai, AK.....	414	441
18	Nashville, TN.....	509	432
19	McAlester, OK.....	341	430
20	Anniston, AL.....	222	428
21	Albuquerque, NM.....	512	425
22	Williamsport, PA.....	380	413
23	Columbia, MO.....	430	396
24	Hawthorne, CA.....	199	386
25	Oakland, CA.....	344	384
26	Altoona, PA.....	272	382
27	Anderson, SC.....	344	379
28	Gainesville, FL.....	239	372
29	Jonesboro, AR.....	300	356
30	Reno, NV.....	247	348

\* Preliminary

Source: ATX-400  
(202) 385-4734

Automated International Flight Service Station--AIFSS

As of: 01/10/07



## Automated Flight Service Stations Activity

CY 2005 Rank	AFSS/State	Flight Services (000's)	
		Jan-Dec 2006*	Jan-Dec 2005
31	Terre Haute, IN.....	285	344
32	St. Louis, MO.....	189	320
33	Rancho Murieta, CA.....	200	317
34	Riverside, CA.....	157	311
35	Burlington, VT.....	212	310
36	Cedar City, UT.....	301	304
37	Cleveland, OH.....	275	297
38	New York, NY.....	340	296
39	McMinnville, OR AFSS.....	220	295
40	Millville, NJ.....	0	290
41	Honolulu, HI.....	13	286
42	Elkins, WV.....	130	270
43	San Diego, CA.....	277	268
44	Wichita, KS.....	211	268
45	Bangor, ME.....	199	260
46	Dayton, OH.....	242	257
47	De Ridder, LA.....	204	250
48	Fort Dodge, IA.....	175	232
49	San Juan, PR IAFSS.....	194	229
50	Huron, SD.....	153	221
51	Grand Forks, ND.....	113	219
52	Buffalo, NY.....	303	215
53	Louisville, KY.....	216	205
54	Great Falls, MT.....	164	196
55	Greenwood, MS.....	81	165
56	Fairbanks, AK.....	151	159
57	Jackson, TN.....	132	155
58	Columbus, NE.....	93	155
59	Boise, ID.....	123	153
60	Casper, WY.....	125	145
61	Juneau, AK.....	125	126

## Airports

### Number of U.S. Airports <sup>1</sup> (As of December 31)

	2006	2005	2004
<b>Total Airports</b> .....	19,983	19,854	19,820
Public Use Airports.....	5,233	5,270	5,288
# with Paved Runways.....	3,940	3,942	3,941
# with Unpaved Runways....	1,293	1,328	1,347
# with Lighted Runways.....	4,038	4,045	4,037
# with Unlighted Runways...	1,195	1,225	1,251
Private Use Airports.....	14,757 <sup>r</sup>	14,584	14,532
# with Paved Runways.....	4,911	4,836	4,771
# with Unpaved Runways...	9,846	9,748	9,761
# with Lighted Runways.....	1,406	1,346	1,301
# with Unlighted Runways..	13,351	13,238	13,231
<b>Public use airports abandoned...</b>	27	14	10
<b>Private use airports abandoned.</b>	133	115	117
<b>Certificated Airports*</b> .....	604	575	599

<sup>1</sup> Includes civil and joint-use civil-military airports, heliports, STOLports, and seaplane bases in the U.S. and its territories.

\* Certificated airports serve Air Carrier Operations with aircraft seating more than 9 passengers seats. (FAR Part 139).  
r revised

As of: 03/15/07

Source: AAS-330  
(202) 267-8752

### National Airspace Total System Delays

Year	Jan	Feb	Mar	Apr	May	Jun	Jul	Aug	Sep	Oct	Nov	Dec	YTD Total
2007*	32,927	30,071	39,139										102,137
2006	29,463	24,705	37,218	35,132	40,669	48,096	47,606	46,547	48,092	51,053	43,482	39,797	491,860
2005	32,121	30,176	34,633	25,887	30,920	48,922	58,471	45,328	32,949	34,221	34,273	29,766	437,667
2004	28,104	32,274	34,001	32,459	50,800	52,121	46,894	43,770	30,412	37,271	35,234	32,446	455,786
2003	16,159	18,260	25,387	17,474	26,544	27,413	32,833	37,066	28,882	21,422	34,116	31,332	316,888

Delays of 15 minutes or longer

\* Preliminary information that is subjected to change

As of: 03/20/07

Source: ATT-220  
(703) 904-4470

# Aircraft

## U.S. Air Carrier Activity

	CY 2006	CY 2005	CY 2004
<b>Type of Carrier</b>			
Domestic, flag, supplemental, and cargo air carriers.....	7,516	7,668	7,720
Commuter Air Carriers and Air Taxis.....	11,554	11,571	11,662
<b>Total Number of Aircraft*</b> .....	19,070	19,239	19,382
<b>Type of Aircraft</b>			
Jet.....	9,939	9,880	9,673
Turboprop.....	2,870	2,994	3,179
Piston.....	3,583	3,745	3,949
Rotary Wing.....	2,678	2,620	2,581
<b>Air Carrier Traffic Statistics*</b> <b>(Millions)*</b>			
Passenger miles flown.....	809,728	795,038	752,358
Passenger enplanements.....	750	747	714
Ton miles.....	120,587	118,743	113,194
Aircraft miles flown.....	8,211	8,239	8,006
Passenger load factor*			
Domestic.....	79.2%	77.2%	74.4%
International.....	79.5%	79.2%	79.1%

\* Source: Vital Information System

\* Includes domestic and international scheduled and non-scheduled service, domestic, flag, supplemental, cargo air carriers and commuters

\* Proportion of aircraft seating capacity that is sold.

As of: 3/15/07

Source: AFS-40  
(202) 385-4514  
\*BTS (K-25)  
(202) 366-8513

**U.S. General Aviation  
and Air Taxi Activity  
(Calendar Years)**

	Estimated Active Aircraft (thousands)		Estimated Hours Flown (Millions)	
	2005	2004	2005	2004
<b>Total</b> .....	224.4	219.4	27.0	28.1
<b>By Type Aircraft</b>				
Piston.....	167.6	165.2	16.4	18.1
Turboprop.....	7.9	8.4	2.1	2.2
Jet.....	9.8	9.3	3.8	3.7
Rotary Wing.....	8.7	7.8	3.1	2.5
Experimental.....	23.6	22.8	1.3	1.3
Light Sport.....	0.2	n/a	0.0	n/a
Other.....	6.5	5.9	0.3	0.2
<b>By Type Flying</b>				
Corporate.....	10.6	10.2	3.1	2.8
Business.....	25.5	24.2	3.2	3.2
Personal.....	151.4	149.7	9.3	10.2
Instructional.....	13.4	13.1	3.6	4.0
Aerial Application.....	3.5	3.2	1.0	1.1
Aerial Observation.....	4.7	4.8	1.3	1.5
Aerial Other.....	0.8	0.8	0.1	0.1
External Load.....	0.2	0.2	0.1	0.1
Other Work.....	0.7	0.9	0.2	0.3
Sightseeing.....	0.9	1.1	0.2	0.2
Air Tours.....	0.6	0.4	0.4	0.2
Air Taxi.....	6.9	6.2	2.9	2.5
Air Medical Services...	1.4	1.6	0.7	0.6

As of:03/08/07

AAI-220  
(202) 267-8659

**Aircraft Certification Service  
Aircraft Certification Mission and  
Program Files**

	FY 2005	FY 2004
Type Certificates/Supplemental Type Certificates Issued.....	967	984
Other Design Approvals Issued.....	12,126	14,146
Production Approvals (Including Amendments) Issued.....	2,547	2,582
Airworthiness Certificates Issued.....	957	831
New Airworthiness Directives (AD) Issued.....	496	417
 New Designees (Representative of the Administrator) Appointed.....	 747	 792
Total Active Designees.....	4,634	4,761

As of: 03/15/06

# Industry Trends

## Scheduled U.S. Air Carrier Traffic\* and Financial\*\* Trends (In Billions)

	FY 2005	FY 2004	Numerical Change	Percent Change
<b>TRAFFIC</b>				
<b>ASM'S</b>				
Majors.....	906.31	870.19	36.12	4.2
Nationals.....	84.73	72.73	12.00	16.5
Regionals.....	12.07	10.47	1.60	15.3
<b>Totals.....</b>	<b>1003.11</b>	<b>953.39</b>	<b>49.72</b>	<b>5.2</b>
<b>RPM's</b>				
Majors.....	703.57	658.29	45.28	6.9
Nationals.....	62.71	52.73	9.98	18.9
Regionals.....	7.53	6.23	1.30	20.9
<b>Totals.....</b>	<b>773.81</b>	<b>717.25</b>	<b>56.56</b>	<b>7.9</b>
<b>Load Factor (in percent)</b>				
Majors.....	77.6%	75.6%	2.5	
Nationals.....	74.0%	72.5%	0.9	
Regionals.....	62.4%	59.5%	3.0	
<b>Totals.....</b>	<b>77.1%</b>	<b>75.2%</b>	<b>1.9</b>	
<b>FINANCIAL</b>				
<b>Revenues</b>				
Majors.....	\$129.68	\$116.66	\$13.02	11.2
Nationals.....	\$14.72	\$13.13	\$1.59	12.1
Regionals.....	\$1.08	\$0.94	\$0.14	15.1
<b>Totals.....</b>	<b>\$145.48</b>	<b>\$130.72</b>	<b>\$14.75</b>	<b>11.3</b>
<b>Expenses</b>				
Majors.....	\$131.43	\$116.64	\$14.79	14.8
Nationals.....	\$14.13	\$12.50	\$1.63	1.6
Regionals.....	\$1.09	\$0.90	\$0.19	0.2
<b>Totals.....</b>	<b>\$146.66</b>	<b>\$130.05</b>	<b>\$16.61</b>	<b>12.8</b>
<b>Operating Profit/Loss</b>				
Majors.....	(\$1.75)	\$0.02	(\$1.77)	
Nationals.....	\$0.59	\$0.63	(\$0.04)	
Regionals.....	(\$0.02)	\$0.03	(\$0.05)	
<b>Totals.....</b>	<b>(\$1.18)</b>	<b>\$0.67</b>	<b>(\$1.85)</b>	

\*Effective FY 2003, small certificated and commuter air carriers with aircraft size less than 90 seats are required to report traffic on DOT Form 41 instead of DOT Form 298C. As a result, traffic statistics for these carriers are now included in this report. Financial results for these carriers continue to be reported on Form 298C and are excluded from this report.

\*\*Effective FY 2003, Comair, Atlantic Coast Airlines, SkyWest Airlines, and ExpressJet started reporting financial results using DOT Form 41. Prior to FY 2003, these carriers reported their financial results using DOT Form 298C and were not included in this report.

Source: APO-110

As of: 03/31/06

21

(202) 493-4236

## Aviation Forecasts

Estimated Forecast  
FY 2005 FY 2009

<b>FAA FACILITY WORKLOAD</b>		
<b>Aircraft Handled by FAA ARTCC's (Millions)</b>		
Air Carrier.....	25.0	27.4
Air Taxi/Commuter.....	10.1	11.2
General Aviation.....	8.4	8.8
Military.....	4.1	4.1
Total.....	47.5	51.5
<b>Operations Logged by FAA/Contract Towers (Millions)</b>		
Airport.....	63.1	67.1
Instrument.....	49.0	51.4
<b>CIVIL AVIATION ACTIVITY</b>		
<b>Certificated Route Air Carrier</b>		
Revenue Passenger Enplanements (Millions).....	587.3	640.1
Revenue Passenger Miles (Billions).....	709.1	805.6
<b>Air Carrier Aircraft.....</b>	4,974	5,412
<b>General Aviation Estimated</b>		
Hours Flown (Millions)*.....	28.3	32.2
Active Aircraft (Thousands)*.....	214.6	231.0
<b>ESTIMATED FUEL CONSUMED BY U.S. DOMESTIC CIVIL AVIATION (Millions of Gallons)</b>		
<b>Jet Fuel</b>		
Air Carrier.....	19,356	21,898
General Aviation.....	1,009	1,434
<b>Aviation Gas</b>		
Air Carrier.....	2	2
General Aviation.....	290	318
<b>Active Pilots (Thousands)*.....</b>	609,603	616,910

\*Calendar Year

As of: 3/31/06

Source: APO-110  
(202) 493-4236



**U.S. Commercial Space Transportation  
FAA Licensed Activity**

	CY 2007 (Projected)	CY 2006	CY 2005
<b>Licensed Commercial Launches</b>			
<b>TOTAL</b>	<b>10</b>	<b>7</b>	<b>5</b>
<b>Number of Orbital Launches</b>	10	7	5
<b>Number of Suborbital Launches</b>	0	0	0
<b>By Launch Vehicle Type</b>			
Delta Family (Boeing Company)	5	1	0
Atlas Family (Lockheed Martin)	1	1	1
Zenit 3SL (Sea Launch)	3	5	4
Falcon 1 (SpaceX)	1	0	0
Other Suborbital	0	0	0
<b>By Launch Site (Federal)</b>			
Cape Canaveral AF Station, FL	2	2	1
Vandenberg AFB, CA	4	0	0
Kwajalein / Marshall Islands	1	0	0
<b>By Launch Site (Commercial)</b>			
Pacific Ocean	3	5	4
Other Commercial	0	0	0
<b>Experimental Permit Launches</b>			
TOTAL (not part of license total)	5 to 10	6	0

As of: 3/12/07

Source: AST  
(202) 267-7989

<b>United States Commercial Space Launch Schedule, CY 2007</b> (launch dates are subject to change)		
<b>Payload (Operator)/ Description</b>	<b>Launch Company/ Vehicle</b>	<b>Launch Date/ Launch Site (Status)</b>
<b>NSS 8 (Netherlands)</b> Communications Satellite	Sea Launch Zenit 3SL	January 26, 2007 Pacific Ocean Platform (Failure)
<b>Cosmo-Skymed 1 (Italy)</b> Remote Sensing Satellite	The Boeing Company (Boeing Launch Services (BLS)) Delta II	June 2007 Vandenberg Air Force Base, CA
<b>WorldView 1 (U.S.)</b> Remote Sensing Satellite	The Boeing Company (BLS) Delta II	Summer 2007 Vandenberg Air Force Base, CA
<b>Unannounced (unannounced)</b> Comm. Satellite	Sea Launch Zenit 3SL	3 <sup>rd</sup> Quarter 2007 Pacific Ocean Platform
<b>GeoEye 1 (U.S.)</b> Remote Sensing Satellite	The Boeing Company (BLS) Delta II	3 <sup>rd</sup> Quarter 2007 Vandenberg Air Force Base, CA
<b>Razaksat (Malaysia)</b> Remote Sensing Satellite	SpaceX Falcon 1	Fall 2007 Kwajalein, Marshall Islands
<b>ICO G (U.S.)</b> Comm. Satellite	Lockheed Martin (Lockheed Martin Commercial Launch Services) Atlas V	November 2007 Cape Canaveral Air Force Station, FL
<b>GOES O (U.S.)</b> Remote Sensing Satellite	The Boeing Company (United Launch Alliance) Delta IV	November 2007 Cape Canaveral Air Force Station, FL
<b>Cosmo-Skymed 2 (Italy)</b> Remote Sensing Satellite	The Boeing Company (BLS) Delta II	4 <sup>th</sup> Quarter 2007 Vandenberg Air Force Base, CA
<b>Unannounced (unannounced)</b> Comm. Satellite	Sea Launch Zenit 3SL	4 <sup>th</sup> Quarter 2007 Pacific Ocean Platform

As of: 03/12/07

Source: AST  
(202) 267-7989

**Active Pilots and Nonpilots  
(As of 30 June)**

**Airmen**

25

	2005		2004	
	Total	Women	Total	Women
<b>Pilot-Total</b> .....	<b>609,737</b>	<b>36,684</b>	<b>618,633</b>	<b>37,243</b>
Student.....	87,213	9,717	87,910	9,857
Private.....	228,619	14,517	235,994	15,036
Commercial.....	120,614	7,315	122,592	7,421
Airline Transport.....	141,992	5,008	142,160	4,908
Other <sup>1</sup> .....	31,299	27	29,977	21
<b>Nonpilot-Total</b> <sup>2</sup> .....	<b>644,016</b>	<b>119,850</b>	<b>515,293</b>	<b>18,666</b>
Mechanic.....	320,293	6,152	317,111	5,932
Repairmen.....	40,030	2,108	39,231	2,039
Ground Instructor.....	74,378	5,612	73,735	5,500
Flight Engineer.....	57,756	1,986	59,376	2,007
Flight Attendant <sup>3</sup> .....	125,032	100,630	NA	NA
Other <sup>4</sup> .....	26,527	3,362	25,840	3,188
<b>Flight Instructor</b> .....	<b>90,555</b>	<b>6,067</b>	<b>89,596</b>	<b>5,970</b>

<sup>1</sup> Includes helicopter (only), glider (only), and recreational and sport pilot certificates. Include Glider pilots represents pilots who received a medical examination within the last 25 months. Lighter-than-air type ratings are no longer being issued.

<sup>2</sup> Excludes non-pilots 70 years old or over in all certificate types except flight engineers and flight navigators.

<sup>3</sup> Introduced in 2005

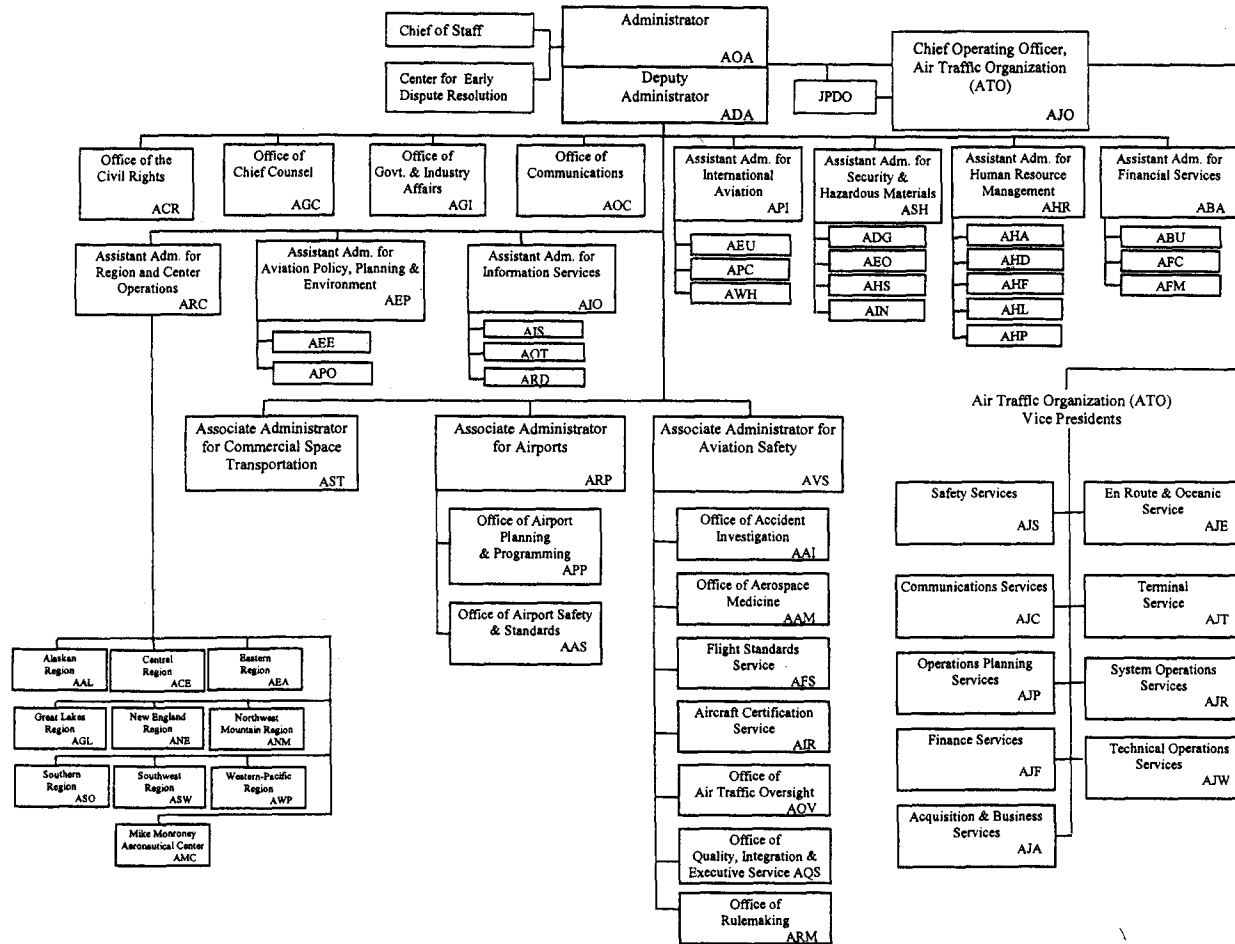
<sup>4</sup> Includes flight navigators, parachute riggers, and dispatchers.

As of 06/30/06

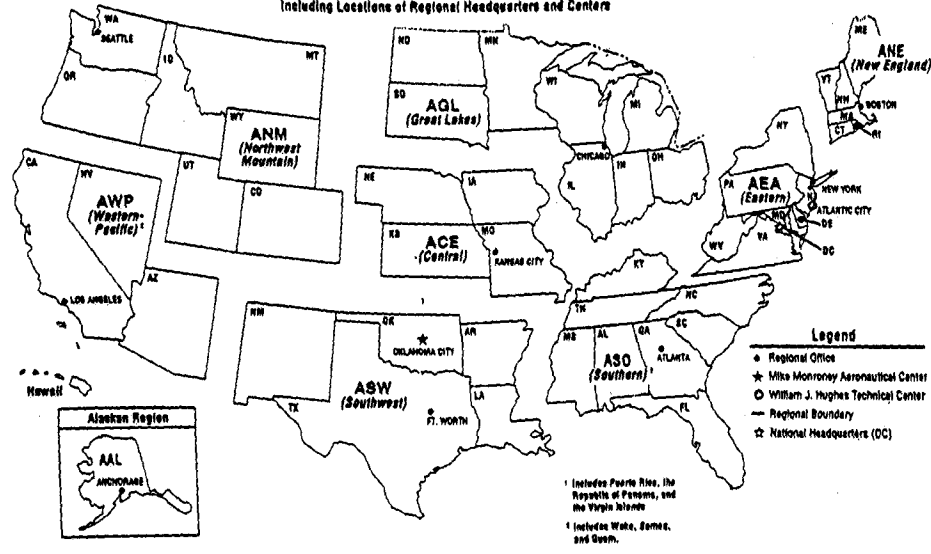
(202) 267-3103

As of January 29, 2007

# FEDERAL AVIATION ADMINISTRATION



U. S. DEPARTMENT OF TRANSPORTATION  
 Federal Aviation Administration  
**FAA REGIONAL BOUNDARIES**  
 Including Locations of Regional Headquarters and Centers



# FAA Resources

## FAA Employment (Permanent Employees)<sup>1</sup>

	FY06	FY05
<b>Line of Business</b>		
Air Traffic Organization (ATO).....	32,851	35,008
Aviation Safety (AVS).....	6,665	6,335
Airports (ARP).....	470	473
Comm. Space Transportation (AST)....	57	54
Staff Offices**.....	3,435	3,860
<b>Total</b>	<b>47,329</b>	<b>45,730</b>
<b>Region/Center/Headquarters (included in above total)</b>		
Aeronautical Center.....	3,205	3,390
Alaskan.....	1,227	1,305
Central.....	2,080	2,277
Eastern.....	4,570	5,074
Great Lakes.....	5,577	6,107
New England.....	1,620	1,785
Northwest Mountain.....	3,691	3,956
Southern.....	6,581	7,092
Southwest.....	4,655	5,076
Western-Pacific.....	4,664	5,091
Washington Headquarters (only) <sup>2</sup> .....	3,101	4,097
Washington Headquarters Field.....	1,764	n/a
Technical Center.....	1,152	1,245

<sup>1</sup> Full time permanent and part time permanent employees only.

<sup>2</sup> Washington Headquarters employees physically located in Orville/Wilbur Wright Buildings and surrounding areas.

\*\* Staff Offices include: ABA; ACR; AEP; AGC; AGI; AHR; AIO; AOC; APO; ARC; ASH.

Disclaimer: This is a statistical snapshot of the workforce demographics. The use of this data in any employment decision is PROHIBITED without the express written authorization of the Deputy Chief Counsel for Operations, AGC-3.

As of: 12/31/06

Source: AHP-100  
(202) 267-8257

### FAA Percent Minority & Female Employment<sup>1</sup>

Lines of Business/Region/Center/Headquarters	% Minority		%Female	
	FY06	FY05	FY06	FY05
Air Traffic Organization (ATO) .....	19.0	18.6	20.0	20.1
Aviation Safety (AVS).....	19.0	19.8	28.0	28.8
Airports (ARP).....	28.0	27.5	40.0	40.8
Commercial Space Transportation (AST).....	46.0	46.3	30.0	31.5
Staff Offices.....	31.0	32.3	53.0	53.2
<b>Total</b>	<b>28.0</b>	<b>20.1</b>	<b>34.0</b>	<b>24.4</b>
Aeronautical Center.....	22.0	21.9	39.0	38.8
Alaskan.....	13.0	13.0	21.0	22.3
Central.....	14.0	14.6	23.0	25.0
Eastern.....	15.0	15.7	19.0	19.4
Great Lakes.....	11.0	11.7	20.0	20.4
New England.....	8.0	7.7	22.0	21.5
Northwest Mountain.....	13.0	12.6	23.0	22.4
Southern.....	22.0	22.0	19.0	19.7
Southwest.....	23.0	23.0	20.0	20.0
Western-Pacific.....	31.0	30.6	21.0	21.4
Washington Headquarters <sup>2</sup> .....	31.0	34.1	39.0	43.6
Technical Center.....	22.0	21.9	32.0	31.9

<sup>1</sup> All FAA employees.

<sup>2</sup> Washington Headquarters employees physically located in Orville/Wilbur Wright Buildings and surrounding areas.

As of: 12/31/06

Source: AHP-100  
(202) 267-8257

### Major Work Force Employment

	Employment				
	FY 06	FY05	FY04	%Chg. FY06 - FY05	Actual Change
<b>Controller Work Force*</b>					
<b>Controllers</b>	14,618	14,540	14,934	0.5%	78
<b>Traffic Management Coordinators</b>	613	627	617	-2.2%	-14
<b>Operations Supervisors</b>	1,787	1,801	1,727	-0.8%	-14
<b>Flight Service Stations (FSS)</b>	184	2,087	2,583	-91.2%	-1,903
<b>Field Maintenance</b>					
<b>PASS Technical</b>	6,187	5,954	5,828	3.9%	233
<b>NATCA Engineers</b>	1,081	1,095	1,089	-1.3%	-14
<b>1st Line Supervisors</b>	529	534	536	-0.9%	-5
<b>Airports Work Force</b>	462	466	472	-0.9%	-4
<b>Aircraft Certification</b>	1,180	1,101	1,171	7.2%	79
<b>Flight Standards Work Force</b>	4,867	4,601	4,793	5.8%	266

\* Includes all employees in pay status and Academy trainees.  
 Note: FSS employment reduction due to A-76 effective 10/04/05.

As of: 03/15/07  
 Source: ATO-F, (202) 267-9123  
 Source: AQS-400, (202) 267-8990



## Labor Relations

	BARGAINING	LABOR	EMPLOYEES
	UNITS	AGREEMENTS	REPRESENTED
<b>Unions.....</b>	<b>46</b>	<b>27</b>	<b>34,036</b>
AFGE.....	10	6	1,604
AFSCME (HQ).....	5	0	1,111
LIUNA.....	1	1	157
NAATS.....	1	1	149
NAGE.....	3	3	297
NATCA (AT).....	4	2	15,401
NATCA (AF).....	2	2	1,300
NATCA (Other).....	8	4	1,380
NFFE.....	3	2	656
PAACE.....	3	2	375
PASS (AF/AEA).....	1	1	7,053
PASS (AVN).....	1	1	338
PASS (AFS).....	2	1	3,400
PASS (AIR).....	1	1	148

AFGE —American Federation of Government Employees  
 AFSCME —American Federation of State, County, and Municipal Employees  
 LIUNA —Laborers' International Union of North America  
 NAATS —National Association of Air Traffic Specialists  
 NAGE —National Association of Government Employees  
 NATCA —National Air Traffic Controllers Association  
 NFFE —National Federation of Federal Employees  
 PAACE —Professional Association of Aeronautical Center Employees  
 PASS —Professional Airways Systems Specialists

Source: AHL-400  
 (202) 267-3548

As of: 3/7/07

**FAA Finances**  
(In Millions of Dollars)

	FY 2006 <sup>1</sup>	FY 2007 <sup>4</sup>	FY 2008
	Actual	Enacted	Request
<b>Budget Authority (BA)</b>			
Grants-In-Aid (Obligation Lim/Approp).....	3,515	3,515	2,750
Research, Engineering, & Development.....	137	130	140
Facilities and Equipment <sup>2</sup> .....	2,555	2,518	
Operations <sup>2</sup> .....	8,104	8,374	
Safety & Operations <sup>3</sup> .....			1,879
Air Traffic Organization <sup>3</sup> .....			9,308
<b>Total.....</b>	<b>14,310</b>	<b>14,537</b>	<b>14,077</b>
<b>Obligations Incurred--Operations</b>			
<b>Appropriation by Line of Business</b>			
Air Traffic Organization (ATO).....	6,732	6,740	6,965
Aviation Safety (AVS).....	956	1,003	1,109
Commercial Space Transportation (AST).....	11	12	13
Staff Offices (SO).....	439	619	758
<b>Total.....</b>	<b>8,138</b>	<b>8,374</b>	<b>8,845</b>
<b>Airport Grant Obligations (NET)</b>			
Primary Airports & Cargo.....	1,007	977	703
States/Territories/Insular/Alaska Supp.....	706	702	626
Carryover Entitlements.....	432	448	448
Discretionary Fund.....	850	809	863
Small Airport Fund.....	430	467	0
<b>Total.....</b>	<b>3,424</b>	<b>3,402</b>	<b>2,640</b>
<b>Total FAA Outlays.....</b>	<b>14,245</b>	<b>14,545</b>	<b>15,338</b>
<b>Trust Fund Receipts from Excise Taxes and Interest</b>			
Transportation of Persons by Air.....	7,423	8,033	8,456
Transportation of Property.....	479	609	650
Use of International Air Facilities.....	1,994	1,936	2,093
Aviation Fuel Commercial Use.....	44	503	518
Aviation Fuel (Other Than Gas).....	640	307	338
Aviation Gasoline.....	10	39	40
<b>Total Tax Revenue.....</b>	<b>10,590</b>	<b>11,426</b>	<b>12,095</b>
Interest revenue.....	495	495	478
<b>Total Tax &amp; Interest Revenue.....</b>	<b>11,085</b>	<b>11,921</b>	<b>12,573</b>

Numbers may not add due to rounding. <sup>1</sup> FY06 reflects across-the-board rescission of 1% and hurricane supplemental funding for \$40.6M in Facilities and Equipment per P.L. 109-148.

<sup>2</sup> Starting in FY 2008, this account will no longer receive appropriations. Funding will go to the new Safety & Operations and ATO accounts.

<sup>3</sup> New account starting in FY 2008. Includes both traditional Operations and Facilities & Equipment funds.

ATS/ARA are combined into the new ATO structure.

<sup>4</sup> Includes Section 111 funding

As of: 03/15/07

Source: ABU-100  
(202) 267-5060

**FAA NAS Operational Facilities**  
**(As of November 30, 2006)**

	2006	2005	2004
<b>NAS Operational Facilities<sup>1</sup></b> .....	<b>40,639</b>	<b>40,847</b>	<b>41,082</b>
Communications.....	14,273	14,344	14,383
Automation.....	3,896	3,900	3,964
Environment.....	6,083	6,122	6,194
Navigation.....	11,033	11,085	11,122
Surveillance.....	1,804	1,848	1,882
Weather.....	3,550	3,548	3,537
<b>Air Traffic Control Facilities<sup>2</sup></b>			
Air Route Traffic Control Center.....	21	21	21
Airport Traffic Control Tower.....	517	517	517
Flight Service <sup>3</sup> .....	75	76	76
Flight Service Stations.....	16	16	16
Automated Flight Service Stations...	60	60	60

<sup>1</sup> Excludes non-federal facilities and foreign facilities.

<sup>2</sup> Included in NAS operational facilities.

<sup>3</sup> Flight Service include Flight Service Stations and Automated Flight Service Stations.

As of: 11/30/06

Source: AOP-200  
(202) 267-5288

# FAA Officials

## Washington Headquarters

Routing Symbol	Officials
AOA	<b>Administrator</b> <b>Marion C. Blakey, 202-267-3111</b> Michael O'Malley, Chief of Staff, 202-267-7416 Louise E. Mailett, Senior Counsel to AOA, 202-267-7417
ADA	<b>Deputy Administrator</b> <b>Bobby Sturgell, 202-267-8111</b> Howard Swancy, Senior Advisor to ADA, 202-267-8111
AJO*	<b>Chief Operating Officer, Air Traffic Organization</b> <b>Bobby Sturgell, Acting, 202-493-5602</b>
AJA	Acquisition & Business Services Vice President, James H. Washington, 202-267-7222
AJC	Communications Services Vice President, Sandra M. Sanchez, 202-493-5154
AJE	En Route & Oceanic Service Vice President, Richard L. Day, 202-385-8501
AJF	Finance Services Vice President, Eugene D. Juba, 202-267-3022
AJP	Operations Planning Services Vice President, Vickie Cox, 202-267-7111
AJR	System Operations Services Vice President, Michael A. Cirillo, 202-267-3666
AJS*	Safety Services Vice President, Tony Mello, Acting, 202-385-4778
AJT	Terminal Services Vice President, David B. Johnson, 202-385-8801
AJW*	Technical Operations Services Vice President, Steven B. Zaidman, 202-267-3366
AJO-38	Joint Planning & Development Office Director, Charles Leader, 202-220-3300
ABA	<b>Assistant Administrator for Financial Services</b> <b>Ramesh K. Punwani, CFO, 202-267-9105</b> Deputy, John F. Hennigan, 202-267-8928
ABU*	<i>Office of Budget</i> Director, Carol Rose, Acting, 202-267-8010
AFC	<i>Office of Financial Controls</i> Director, Carl Burrus, 202-267-7140
AFM	<i>Office of Financial Management</i> Director, Tim Lawler, 202-267-3018
ACR	<b>Assistant Administrator for Civil Rights</b> <b>Fanny Rivera, 202-267-3254</b> Deputy, Barbara A. Edwards, 202-267-3264
AEP	<b>Asst. Admin. for Aviation Policy, Planning &amp; Environment</b> <b>Dan K. Elwell, 202-267-3927</b> Deputy, Nancy LoBue, 202-267-7954

\* Updated this issue  
As of: 03/15/07

Source: ABA-1  
(202) 267-9105

## FAA Officials

### Washington Headquarters--(Cont)

Routing Symbol	Officials
AEE	Office of Environment and Energy Director, Carl Burleson, 202-267-3576
APO	Office of Aviation Policy and Plans Director, Nan Shellabarger, 202-267-3274
AGC*	<b>Chief Counsel</b> Kerry B. Long, 202-267-3883 Deputy Chief Counsel for Policy and Adjudication James W. Whitlow, 202-267-3773 Deputy Chief Counsel for Operations Thomas Romig, 202-267-3773
AGI*	<b>Asst. Administrator for Government &amp; Industry Affairs</b> Megan Rosia, 202-267-3277 Chris Brown, 202-267-8211
AHR	<b>Asst. Administrator for Human Resource Management</b> Ventriss C. Gibson, 202-267-3456 Deputy for Strategic Human Capital Management Mary Ellen Dix, 202-267-3850 Deputy for Strategic Labor, Joseph N. Miniace, 202-267-3979
AHA	Office of the Accountability Board Executive Director, Maria Fernandez-Greczmiel, 202-267-3065
AHD	Office of Corporate Learning Executive Director, Darlene Freeman, 202-267-9041
AHF*	HR Field Operations Executive Director, Gloria Quay, 718-553-3130
AHL	Office of Labor Management Relations Executive Director, Melvin Harris, 202-267-3979
AHP	Office of Human Resources Management Programs and Policies Executive Director, Sue A. Engelhardt, 202-267-3850
AIO*	<b>Assistant Administrator for Information Services</b> David M. Bowen, CIO, 202-493-4570 Deputy, Vacant, 202-493-4570
AIS	Office of Information Systems Security Director, Michael F. Brown, 202-267-7104
AOT	Office of Information Technology Optimization and Performance Tracking Director, Vacant, 202-493-4629
ARD	Office of Information Technology Research and Development Chief Technology Officer, Mark T. Powell, 202-385-8150
AOC*	<b>Assistant Administrator for Communications</b> Melanie Alvord, 202-267-3883 Deputy, External Communications, Laura Brown, 202-267-3883 Deputy, Internal Communications, Gerald Lavey, 202-267-9499
API*	<b>Asst. Administrator for International Aviation</b> James Filippatos, 202-385-8900
ARC	<b>Assistant Administrator for Regions/Center Operations</b> Ruth Leverenz, 202-267-7369 Deputy, Paula Lewis, 202-267-7369
ALO	Aviation Logistics Organization Director, John R. Block, 202-267-7369
ASH	Lynne A. Osmus, 202-267-7211 Deputy, Claudio Manno, 202-267-7211
ADG	Office of Hazardous Materials Director, William Wilkening, Jr., 202-267-9864
AEO	Office of Emergency Operations and Communications Director, Chris Rocheleau, 202-267-8075
AHS	Office of Operations Director, Thomas D. Ryan, 202-267-7211

## FAA Officials

### Washington Headquarters--(Cont.)

Routing Symbol	Officials
<i>AIN</i> .....	<i>Office of Internal Security and Investigations</i> <i>Director, Bruce Herron, 202-267-7714</i>
<b>ARP*</b> .....	<b>Associate Administrator for Airports</b> <b>D. Kirk Shaffer, 202-267-9471</b> <i>Deputy, Catherine M. Lang, 202-267-8738</i>
<i>AAS</i> .....	<i>Office of Airport Safety and Standards</i> <i>Director, David L. Bennett, 202-267-3053</i>
<i>APP8</i> .....	<i>Office of Airport Planning &amp; Programming</i> <i>Director, Benito DeLeon, 202-267-8775</i>
<b>AST</b> .....	<b>Assoc. Adm. for Commercial Space Transportation</b> <b>Patricia Grace Smith, 202-267-7793</b> <i>Deputy, Dr. George C. Nield, 202-267-7848</i>
<b>AVS</b> .....	<b>Associate Administrator for Aviation Safety</b> <b>Nicholas A. Sabatini, 202-267-3131</b> <i>Deputy, Peggy Gilligan, 202-267-7804</i>
<i>AAI</i> .....	<i>Office of Accident Investigation</i> <i>Director, Steven B. Wallace, 202-267-9612</i>
<i>AAM</i> .....	<i>Office of Aviation Medicine</i> <i>Director, Frederick Tilton, MD, 202-267-3535</i>
<i>AFS</i> .....	<i>Flight Standards Service</i> <i>Director, James Ballough, 202-267-8237</i>
<i>AIR</i> .....	<i>Aircraft Certification Service</i> <i>Director, John J. Hickey, 202-267-8235</i>
<b>AOV*</b> .....	<i>Office of Air Traffic Oversight</i> <i>Director, Anthony Ferrante, 202-267-5202</i>
<i>AQS</i> .....	<i>Quality, Integration and Executive Service</i> <i>Director, Vi Lipski, 202-493-5860</i>
<b>ARM*</b> .....	<i>Office of Rulemaking</i> <i>Director, Pamela Hamilton-Powell, 202-267-9677</i>

---

Duty Officer (202) 267-3333

## FAA Officials

### Major Field Organizations

Routing Symbol	Officials
<b>AAL</b> .....	<b>Alaskan Region, Regional Administrator</b> <b>Bob Lewis, Acting, 907-271-5645</b> 222 West 7th Avenue, Box 14 Anchorage, Alaska 99513-7587 Duty Officer, 907-271-5936
<b>ACE</b> .....	<b>Central Region, Regional Administrator</b> <b>Christopher Blum, 816-329-3050</b> 901 Locust Kansas City, Missouri 64106 Duty Officer, 816-329-3000
<b>ACT</b> .....	<b>William J. Hughes Technical Center, Director</b> <b>Wilson N. Felder, Ph.D., 609-485-6641</b> Atlantic City International Airport New Jersey 08405 Duty Officer, 609-485-6482
<b>AEA</b> .....	<b>Eastern Region, Regional Administrator</b> <b>Manny Weiss, 718-553-3000</b> 1 Aviation Plaza 159-30 Rockaway Blvd. Jamaica, New York 11434-4809 Duty Officer, 718-553-3100
<b>AGL</b> .....	<b>Great Lakes Region, Regional Administrator</b> <b>Christopher Blum, 847-294-7294</b> 2300 East Devon Avenue Des Plaines, Illinois 60018 Duty Officer, 847-294-8400
<b>AMC</b> .....	<b>Mike Monroney Aeronautical Center, Director</b> <b>Lindy Ritz, 405-954-4521</b> 6500 South MacArthur Oklahoma City, Oklahoma 73125 Duty Officer, 405-954-3583

387  
1000  
87

**FAA Officials**  
**Major Field Organizations--(Cont.)**

Routing Symbol	Officials
<b>ANE</b> .....	<b>New England Region, Regional Administrator</b> <b>Amy Lind Corbett, 781-238-7020</b> 12 New England Executive Park Burlington, Massachusetts 01803 Duty Officer, 781-238-7001
<b>ANM</b> .....	<b>Northwest Mountain Region, Regional Administrator</b> <b>Dennis Roberts, 425-227-2001</b> 1601 Lind Avenue, S.W. Renton, Washington 98055-4056 Duty Officer, 425-227-2000
<b>ASO</b> .....	<b>Southern Region, Regional Administrator</b> <b>Doug Murphy, 404-305-5000</b> 1701 Columbia Avenue College Park, Georgia 30337 Duty Officer, 404-305-5180
<b>ASW</b> .....	<b>Southwest Region, Regional Administrator</b> <b>Ava L. Wilkerson, 817-222-5001</b> 2601 Meacham Blvd. Ft. Worth, Texas 76137-4298 Duty Officer, 817-222-5006
<b>AWP</b> .....	<b>Western-Pacific Region, Regional Administrator</b> <b>William C. Withycombe, 310-725-3550</b> 15000 Aviation Boulevard Hawthorne, California 90261 Duty Officer, 310-725-3300



## **FAA Officials**

### **International Area Offices**

<b>Routing Symbol</b>	<b>Officials</b>
<b>AEU*</b> .....	<b>Europe, Africa, &amp; Middle East Area Office, Director</b> <b>Anthony Fazio, 011-322-508-2700</b> American Embassy, Brussels PSC 82 Box 002 APO AE 09724-1011
<b>AWH*</b> .....	<b>Western Hemisphere Area Office, Director</b> <b>Cecilia Capestany, Acting, 305-716-3300</b> 8600 NW 36th Street Miami, FL 33166
<b>APC</b> .....	<b>Asia-Pacific Area Office, Director</b> <b>Nancy Graham, 011-65-6540-4114</b> American Embassy 27 Napier Road Singapore 258508

**FEDERAL AVIATION ADMINISTRATION  
FLIGHT PLAN 2007-2011**

**INCREASED SAFETY**

**Goal:** *Achieve the lowest possible accident rate and constantly improve safety.*

**Objectives:**

1. Reduce the commercial airline fatal accident rate.
2. Reduce the number of fatal accidents in general aviation.
3. Reduce the risk of runway incursions.
4. Ensure the safety of commercial space launches.
5. Enhance the safety of FAA's air traffic systems.

**Performance Targets:**

Obj. 1 Limit the three-year rolling average fatal accident rate to 0.010 fatal accidents per 100,000 departures.

Obj. 2 By FY 2009, reduce the number of general aviation and nonscheduled Part 135 fatal accidents from the 1996-1998 average of 385 per year to no more than 319 accidents per year.

Obj. 2 By FY 2009, reduce accidents in Alaska for general aviation and all Part 135 operations from the 2000-2002 average of 130 accidents per year to no more than 99 accidents per year.

Obj. 3 By FY 2010, limit Category A and B (most serious) runway incursions to a rate of no more than 0.450 per million operations, and maintain or improve through FY 2011.

Obj. 4 No fatalities, serious injuries, or significant property damage to the uninvolved public during licensed or permitted space launch and reentry activities.

As of 10/01/06

Source: APO-120  
(202) 267-3220

**INCREASED SAFETY Performance Targets (Continued)**

Obj. 5 Limit Category A and B (most serious) operational errors to a rate of no more than 4.27 per million activities through FY 2008.

Obj. 5 By FY 2010, apply Safety Risk Management to at least 19 significant changes in the NAS.

## **GREATER CAPACITY**

***Goal:*** *Work with local governments and airspace users to provide increased capacity in the United States airspace system that reduces congestion and meets projected demand in an environmentally sound manner.*

### ***Objectives:***

1. Increase capacity to meet projected demand and reduce congestion.
2. Increase reliability and on-time performance of scheduled carriers.
3. Address environmental issues associated with capacity enhancements.

### ***Performance Targets:***

Obj. 1 Achieve an average daily airport capacity for the 35 OEP airports of 104,338 arrivals and departures per day by FY 2011.

Obj. 1 Commission six new runway projects, increasing the annual service volume of the 35 OEP airports by at least 1 percent annually, measured as a five-year moving average, through FY 2011.

Obj. 1 Sustain adjusted operational availability of 99.7% for the reportable facilities that support the 35 OEP airports through FY 2011.

Obj. 1 Achieve an average daily airport capacity for the seven major metropolitan areas of 64,060 arrivals and departures per day by 2009, and maintain through FY 2011.

Obj. 2 Achieve a NAS on-time arrival rate of 88.76 percent at the 35 OEP airports by FY 2011.

Obj. 3 Reduce the number of people exposed to significant noise by 1 percent each year through FY 2011.

Obj. 3 Improve aviation fuel efficiency per revenue plane-mile by 1 percent each year through FY 2011.

## **INTERNATIONAL LEADERSHIP**

**Goal:** *Increase the safety and capacity of the global civil aerospace system in an environmentally sound manner.*

**Objectives:**

1. Promote improved safety and regulatory oversight in cooperation with bilateral, regional, and multilateral aviation partners.
2. Promote seamless operations around the globe in cooperation with bilateral, regional, and multilateral aviation partners.

**Performance Targets:**

Obj. 1 Work with the Chinese aviation authorities and industry to adopt 27 proven Commercial Aviation Safety Team (CAST) safety enhancements by FY 2011. This supports China's efforts to reduce fatal accidents to a rate of 0.030 fatal accidents per 100,000 departures by FY 2012.

Obj. 1 Conclude at least eight (new or expanded) bilateral safety agreements that will facilitate an increase in the ability to exchange aviation products and services by FY 2011.

Obj. 1 Secure a yearly increase in international aviation development funding to strengthen the global aviation infrastructure. Achieve a 100% increase of the FY 2007 baseline target of \$12 million in \$3 million annual increments for an FY 2011 target of \$24 million.

Obj. 2 By FY 2011, expand the use of Next Generation Air Transportation System (NextGen) performance-based systems to five priority countries.

## **ORGANIZATIONAL EXCELLENCE**

***GOAL:*** *Insure the success of the FAA's mission through stronger leadership, a better-trained and safer workforce, enhanced cost-control measures, and improved decision-making based on reliable data.*

### **Objectives:**

1. Make the organization more effective with stronger leadership, increased commitment of individual workers to fulfill organization-wide goals, and a better prepared, better trained, safer, diverse workforce.
2. Improve financial management while delivering quality customer service.
3. Make decisions based on reliable data to improve our overall performance and customer satisfaction.
4. Enhance our ability to respond to crises rapidly and effectively, including security-related threats and natural disasters.

### **Performance Targets:**

Obj. 1 Increase the score of the Employee Attitude Survey measure for the areas of management effectiveness and accountability by at least 5 percent, over the FY 2003 baseline of 35 percent by FY 2010.

Obj. 1 By FY 2011, reduce the time it takes to fill mission-critical positions by 7 percent (to 51 days) over the FY 2006 baseline of 55 days.

Obj. 1 Reduce the total workplace injury and illness case rate to no more than 2.44 per 100 employees by the end of FY 2011, representing a cumulative 3 percent annual reduction from the FY 2003 baseline (3.12) set in the Safety, Health and Return to Employment (SHARE) Presidential initiative.

Obj. 1 Reduce grievance processing time by 25 percent by FY 2010, and maintain the reduction through FY 2011.

Obj. 1 Maintain the air traffic control workforce at, or up to 2% above the projected annual totals in the Air Traffic Controller Workforce Plan.

**ORGANIZATIONAL EXCELLENCE Performance Targets (Continued)**

Obj. 2 Close out 85% of eligible cost reimbursable contracts during each fiscal year.

Obj. 2 Organizations throughout the agency will continue to implement cost efficiency initiatives including, but not limited to: 10-15% savings for strategic sourcing for selected products and services; consolidating facilities and services, such as service areas, real property management, and web service; 3% reduction in help desk operating costs through consolidations; eliminating or reducing obsolete technology; and \$15 million reduction in Information Technology operationg costs.

Obj. 2 Obtain an unqualified opinion on the agency's financial statements (Clean Audit with no material weaknesses) each fiscal year.

Obj. 3 By FY 2008, 90 percent of major system acquisition investments are within 10 percent of annual budget and maintain through FY 2011.

Obj. 3 By FY 2008, 90 percent of major system acquisition investments are on schedule and maintain through FY 2011.

Obj. 3 Increase agency scores on the American Customer Satisfaction Index which surveys commercial pilots.

Obj. 3 Achieve zero cyber security events that disable or significantly degrade FAA services.

# 2007

January							February						
											1	2	3
	<b>1</b>	2	3	4	5	6	4	5	6	7	8	9	10
7	8	9	10	11	12	13	11	12	13	14	15	16	17
14	<b>15</b>	16	17	18	19	20	18	<b>19</b>	20	21	22	23	24
21	22	23	24	25	26	27	25	26	27	28			
28	29	30	31										
March							April						
				1	2	3	1	2	3	4	5	6	7
4	5	6	7	8	9	10	8	9	10	11	12	13	14
11	12	13	14	15	16	17	15	16	17	18	19	20	21
18	19	20	21	22	23	24	22	23	24	25	26	27	28
25	26	27	28	29	30	31	29	30					
May							June						
		1	2	3	4	5						1	2
6	7	8	9	10	11	12	3	4	5	6	7	8	9
13	14	15	16	17	18	19	10	11	12	13	14	15	16
20	21	22	23	24	25	26	17	18	19	20	21	22	23
27	<b>28</b>	29	30	31			24	25	26	27	28	29	30
July							August						
1	2	3	<b>4</b>	5	6	7				1	2	3	4
8	9	10	11	12	13	14	5	6	7	8	9	10	11
15	16	17	18	19	20	21	12	13	14	15	16	17	18
22	23	24	25	26	27	28	19	20	21	22	23	24	25
29	30	31					26	27	28	29	30	31	
September							October						
						1		1	2	3	4	5	6
2	<b>3</b>	4	5	6	7	8	7	<b>8</b>	9	10	11	12	13
9	10	11	12	13	14	15	14	15	16	17	18	19	20
16	17	18	19	20	21	22	21	22	23	24	25	26	27
23	24	25	26	27	28	29	28	29	30	31			
30													
November							December						
				1	2	3							1
4	5	6	7	8	9	10	2	3	4	5	6	7	8
11	<b>12</b>	13	14	15	16	17	9	10	11	12	13	14	15
18	19	20	21	<b>22</b>	23	24	16	17	18	19	20	21	22
25	26	27	28	29	30		23	24	<b>25</b>	26	27	28	29
							30	31					

Legal holidays and federal holidays observed are in **BOLDFACE**.



# 2008

January												February											
		<b>1</b>	2	3	4	5													1	2			
6	7	8	9	10	11	12	3	4	5	6	7	8	9										
13	14	15	16	17	18	19	10	11	12	13	14	15	16										
20	<b>21</b>	22	23	24	25	26	17	<b>18</b>	19	20	21	22	23										
27	28	29	30	31			24	25	26	27	28	29											
March												April											
						1							1	2	3	4	5						
2	3	4	5	6	7	8	6	7	8	9	10	11	12										
9	10	11	12	13	14	15	13	14	15	16	17	18	19										
16	17	18	19	20	21	22	20	21	22	23	24	25	26										
23	24	25	26	27	28	29	27	28	29	30													
30	31																						
May												June											
					1	2	3						1	2	3	4	5	6	7				
4	5	6	7	8	9	10	8	9	10	11	12	13	14										
11	12	13	14	15	16	17	15	16	17	18	19	20	21										
18	19	20	21	22	23	24	22	23	24	25	26	27	28										
25	<b>26</b>	27	28	29	30	31	29	30															
July												August											
		1	2	3	<b>4</b>	5							1	2									
6	7	8	9	10	11	12	3	4	5	6	7	8	9										
13	14	15	16	17	18	19	10	11	12	13	14	15	16										
20	21	22	23	24	25	26	17	18	19	20	21	22	23										
27	28	29	30	31			24	25	26	27	28	29	30										
							31																
September												October											
		<b>1</b>	2	3	4	5	6						1	2	3	4							
7	8	9	10	11	12	13	5	6	7	8	9	10	11										
14	15	16	17	18	19	20	12	<b>13</b>	14	15	16	17	18										
21	22	23	24	25	26	27	19	20	21	22	23	24	25										
28	29	30					26	27	28	29	30	31											
November												December											
						1							1	2	3	4	5	6					
2	3	4	5	6	7	8	7	8	9	10	11	12	13										
9	10	<b>11</b>	12	13	14	15	14	15	16	17	18	19	20										
16	17	18	19	20	21	22	21	22	23	24	<b>25</b>	26	27										
23	24	25	26	<b>27</b>	28	29	28	29	30	31													
30																							

Legal holidays and Federal holidays observed are in **BOLDFACE**.

## ***FAA VALUES***

***Safety is our passion.***

*We're the world leaders in aerospace safety.*

***Quality is our trademark.***

*We serve our country, our customers, and each other.*

***Integrity is our character.***

*We do the right thing, even when no one is looking.*

***People are our strength.***

*We treat people as we want to be treated.*