



U.S. Department
of Transportation

**Federal Aviation
Administration**

ADMINISTRATOR'S FACT BOOK

December 2003

(Updated quarterly)

Produced by:
Assistant Administrator for Financial Services
Office of Cost and Performance Management
Standards and Information Division

Web site: <http://www.atctraining.faa.gov/factbook>

Table of Contents

FAA Vision and Mission.....	Inside Front Cover
FAA Values	Inside Back Cover

Safety

Aviation Accidents by Type of Operations	3*
Aviation Accident Rates by Type of Operation.....	4*
Airspace Incidents by Incident Type.....	5*
Airspace Incident Rates by Incident Type.....	6*
NTSB U.S. Transportation Fatalities	7

FAA Air Traffic

FAA Air Traffic Activity	8*
Air Route Traffic Control Center Activity.....	9*
50 Busiest FAA Air Traffic Control Towers.....	10*
50 Busiest Approach Control Facilities.....	12*
Automated Flight Service Station Activity.....	14*

Airports

Number of U.S. Airports.....	16
National Airspace Systems Delays	17*

Aircraft

U.S. Air Carrier Activity.....	18
U.S. General Aviation Activity.....	19
Aircraft Certification Service	20

Industry Trends

Scheduled U.S. Air Carrier Traffic & Fin. Trends	21*
Aviation Forecasts	22*

Airmen

Active Pilots and Nonpilots	23*
-----------------------------------	-----

FAA Organizational Chart.....	Center Fold*
-------------------------------	--------------

<i>FAA Regional Boundaries Map</i>	<i>26</i>
--	-----------

Table of Contents (cont.)

Commercial Space Transportation

AST Licensing and Industry Activity	27
U.S. Commercial Space Launch Schedule	28

FAA Resources

FAA Employment	29
FAA Percent Minority and Women Employment.....	30
FAA Major Work Force Employment.....	31*
Labor Relations.....	32
FAA Finances	33
FAA Facilities and Aircraft	34

Organization

FAA Officials–Washington Headquarters.....	35*
FAA Officials–Major Field Organizations.....	38*
FAA Officials--International Offices	40*
FAA Flight Plan 2004-2008	41*

For further information call APF-100 (202-267-9946)

*Updated this issue

Distribution: A-WXYZE-3; A-FOF-O(STD)

Aviation Accidents by Type of Operation

Type of Operation	Year	Jan	Feb	Mar	Apr	May	Jun	Jul	Aug	Sep	Oct	Nov	Dec	Year Total
Large Air Carrier	2002	3	3	6	5	3	7	5	1	2	2	4	0	41
	2003	5	3	4	8	5	7	2	5	6	2			47
Commuter	2002	0	0	2	0	1	1	1	1	2	0	0	0	8
	2003	0	0	0	0	0	0	2	0	0	0			2
Air Taxi	2002	5	5	8	1	4	7	7	6	4	5	2	5	59
	2003	7	5	4	7	6	7	8	3	8	3			58
General Aviation	2002	95	93	114	137	164	208	207	204	164	123	117	90	1,716
	2003	103	88	137	146	156	210	196	161	147	143			1,487
Rotorcraft*	2002	13	11	16	15	21	29	23	19	22	12	14	12	207
	2003	15	10	16	16	21	31	29	12	12	10			172

* Part 135 and US registered general aviation rotorcraft accidents.

Note: Preliminary data and subject to change.
As of: 12/01/03

Source: AAI-200
(202) 267-3279

Aviation Accident Rates by Type of Operation

Type of Operation	1999		2000		2001		2002		% Chg 01-00	
	Number	Rate	Number	Rate	Number	Rate	Number	Rate	Number	Rate
Large Air Carriers.....	51	.29	56	.31	45	.23	41	.23	-9%	0%
Commuter.....	13	3.79	12	3.25	7	2.33	8	2.59	14%	11%
Air Taxi.....	73	2.21	80	2.25	72	2.27	58	1.90	-19%	-16%
General Aviation.....	1,906	6.40	1,837	6.30	1,726	6.28	1,714	6.56	-1%	4%

Accident Rates are per 100,000 Flight Hours. Flight hours compiled by FAA

Rotorcraft rates discontinued, currently under review

Note: 2002 data preliminary.

As of: 12/08/02

Source: NTSB

www.nts.gov/aviation

Airspace Incidents by Incident Type

Incident Type	Year	Jan	Feb	Mar	Apr	May	Jun	Jul	Aug	Sep	Oct	Nov	Dec	Year Total
Near Midair Collisions	2002	14	11	12	16	15	19	22	15	17	19	13	7	180
	2003	10	12	11	8									41
Pilot Deviations	2002	136	128	142	169	153	175	174	173	191	153	175	164	1,933
	2003	123	153	310	274									860
Operational Errors	2002	87	66	109	110	93	87	86	84	78	99	79	65	1,043
	2003	71	89	99	109									368
Vehicle Pedestrian Deviations	2002	28	29	31	40	38	27	28	29	43	24	24	18	359
	2003	26	29	32	19									106
Surface Incidents	2002	62	68	87	91	121	101	83	88	101	63	82	71	1,018
	2003	69	75	83	59									286
Runway Incursions*	2002	14	18	31	27	46	30	23	33	35	25	28	26	336
	2003	29	26	30	19									104

Note: Preliminary data and subject to change.

Source: ATX-400
(202) 385-4802
*ATS
(202) 385-4788

As of: 05/15/03

*As of: 04/30/03

Airspace Incident Rates by Incident Type

Incident Type	Percent Change									
	1999		2000		2001		2002		2001 - 2002 (4)	
	Number	Rate	Number	Rate	Number	Rate	Number	Rate	Number	Rate
Operational Errors (1).....	992	.60	1,138	.69	1,182	.74	1,042	.66	-12%	-11%
Pilot Deviations (2).....	1,629	.99	1,900	1.15	1,975	1.20	1,922	1.17	-3%	-3%
Surface Incidents (3).....	1,048	1.53	1,391	2.06	1,250	1.91	1,011	1.56	-19%	-18%

(1) Per 100,000 Facility Activities

(2) Per 100,000 Flight Hours

(3) Per 1,000,000 Airport Operations

(4) Calculations use fifteen decimal places for rates (rounded two places for display).

Note: 2002 data preliminary and subject to change.

As of: 11/17/03

Source: ATX-400

(202) 385-4802

National Transportation Safety Board 2001-2000 U.S. Transportation Fatalities

	2001 ¹	2000
Highway		
Passenger cars.....	20,269	20,492
Light Trucks and Vans.....	11,564	11,418
Pedestrians.....	4,698	4,739
Motorcycles.....	3,067	2,862
Pedalcycles ²	701	690
Medium and heavy trucks.....	696	741
Buses.....	N/A	22
All Other ³	735	857
Total.....	41,730	41,821
Grade Crossings⁴	(418)	(425)
Rail		
Intercity ⁵		
Trespassers and nontrespassers ⁶	591	544
Employees and contractors.....	26	28
Passengers on trains.....	3	4
Transit ⁷		
Light, heavy, and commuter rail.....	175	194
Total.....	795	770
Marine		
Recreational Boating.....	700	701
Cargo Transport.....	21	36
Commercial fishing ⁸	23	41
Commercial Passengers.....	23	23
Total.....	767	801
Aviation		
General Aviation.....	553	594
Airlines ⁹	531	92
Air Taxi.....	60	71
Commuter.....	13	5
Foreign/Unregistered ¹⁰	5	17
Total.....	1,162	779
Pipeline		
Gas.....	7	37
Liquids.....	0	1
Total.....	7	38
GRAND TOTAL.....	44,461	44,209

¹ 2001 preliminary estimates. Aviation data from NTSB; all other from DOT. ² Includes bicycles or other cycles. ³ Includes vehicle occupant fatalities in vehicle types; ex. farm or construction equipment. ⁴ Grade crossing fatalities not counted separately for determining the grand totals because they are included in the highway and rail categories, as appropriate. ⁵ Data reported to Federal Rail Administration (FRA). ⁶ includes persons on railroad property with and without permission. Does not include motor vehicle occupants killed at grade crossings. ⁷ Data reported to the FTA. Fatalities for commuter rail operations may also be reported to the FRA and may be included in the intercity railroad fatalities. ⁸ Refers to only operational fatalities. ⁹ Of the 531 airline fatalities in 2001, 265 occurred aboard the four hijacked airplanes on September 11, 2001. ¹⁰ Includes non-U.S. registered aircraft involved in accidents in the U.S.

Air Traffic

FAA Air Traffic Activity (In Thousands)

Aircraft Handled by FAA ARTCC's	Jan-Oct 2003*	Jan-Oct 2002	Jan-Dec 2002
Air Carrier.....	18,913	19,355	23,143
Air Taxi.....	7,745	7,411	8,878
General Aviation.....	6,779	6,921	8,147
Military.....	3,265	3,357	3,949
TOTAL....	36,702	37,044	44,117
Airport Operations Logged by FAA Towers			
Air Carrier.....	10,425	10,973	13,101
Air Taxi.....	8,408	8,046	9,599
General Aviation.....	19,085	20,508	23,918
Military.....	1,654	1,706	1,989
TOTAL....	39,572	41,233	48,607
Instrument Operations Logged by FAA Towers			
Air Carrier.....	11,459	12,037	14,408
Air Taxi.....	10,155	9,758	11,649
General Aviation.....	15,674	16,425	19,190
Military.....	2,753	2,952	3,425
TOTAL....	40,041	41,172	48,672
Flight Services Logged by: **			
Flight Service Stations.....	798	800	909
Automated Flight Service Stations.....	22,741	23,816	27,714
TOTAL....	23,539	24,616	28,623

*Preliminary

As of: 12/12/03

***As of: 10/06/03

Source: APO-130

(202) 267-3350

**Source: ATX-400

(202) 385-4734

Air Route Traffic Control Center Activity

CY 2002 Rank	Center	Aircraft Handled (000's)		
		Jan-Oct 2003*	Jan-Oct 2002	Jan-Dec 2002
1	Cleveland, OH.....	2,486	2,549	3,027
2	Atlanta, GA.....	2,461	2,460	2,926
3	Chicago, IL.....	2,375	2,395	2,856
4	New York, NY.....	2,340	2,339	2,797
5	Indianapolis, IN.....	2,260	2,248	2,675
6	Washington, DC.....	2,155	2,162	2,574
7	Jacksonville, FL.....	1,887	1,845	2,206
8	Memphis, TN.....	1,857	1,847	2,200
9	Miami, FL.....	1,803	1,818	2,183
10	Kansas City, KS.....	1,729	1,796	2,132
11	Fort Worth, TX.....	1,773	1,770	2,111
12	Minneapolis, MN.....	1,715	1,737	2,063
13	Los Angeles, CA.....	1,677	1,692	2,023
14	Houston, TX.....	1,664	1,655	1,971
15	Boston, MA.....	1,506	1,521	1,798
16	Albuquerque, NM.....	1,417	1,462	1,738
17	Denver, CO.....	1,405	1,426	1,701
18	Oakland, CA.....	1,327	1,345	1,606
19	Salt Lake City, UT.....	1,228	1,283	1,526
20	Seattle, WA.....	1,069	1,083	1,281
21	Anchorage, AK.....	481	511	602
22	Guam ** 1.....	86	92	120

¹ Missing 2003 data.

*Preliminary

**Center Radar Approach Control (CERAP)

Source: APO-130
(202) 267-3350

As of: 12/12/03

50 Busiest FAA Airport Traffic Control Towers

CY 2002 Rank	Tower and State	Airport Operations (000's)		
		Jan-Oct 2003*	Jan-Oct 2002	Jan-Dec 2002
1	Chicago/O'Hare Int'l., IL.....	770	770	923
2	Atlanta International, GA.....	755	745	891
3	Dallas/Ft. Worth Int'l., TX.....	642	650	777
4	Los Angeles Int'l, CA.....	519	537	645
5	Phoenix Sky Harbor Int'l, AZ.....	494	491	590
6	Denver International, CO.....	424	425	509
7	Minneapolis-St. Paul Int'l, MN.....	425	425	507
8	Van Nuys, CA.....	389	418	498
9	Las Vegas/McCarran Int'l, NV.....	420	420	498
10	Detroit Metro Wayne Co., MI.....	412	418	498
11	Covington/Cincinnati Int'l, KY.....	419	405	485
12	Philadelphia Int'l, PA.....	373	394	468
13	Houston/G Bush Intercont'l, TX.....	397	387	462
14	Charlotte/Douglas Int'l, NC.....	369	388	459
15	Lambert-St. Louis Int'l, MO.....	348	381	452
16	Miami International, FL.....	343	371	446
17	Pittsburgh International, PA.....	302	364	425
18	Denver/Centennial.....	311	360	422
19	Newark International, NJ.....	342	345	411
20	Salt Lake City Int'l, UT.....	336	342	407
21	Boston/Logan Int'l, MA.....	321	345	405
22	Memphis International, TN.....	336	333	398
23	Washington Dulles Int'l, VA.....	305	329	392
24	Phoenix-Deer Valley, AZ.....	329	334	390
25	Santa Ana/John Wayne, CA.....	299	318	376

*Preliminary

As of: 12/12/03

50 Busiest FAA Airport Traffic Control Towers

CY 2002 Rank	Tower and State	Airport Operations (000's)		
		Jan-Oct 2003*	Jan-Oct 2002	Jan-Dec 2002
26	Orlando/Sanford, FL.....	298	314	373
27	Metropolitan Oakland Int'l.....	292	312	372
28	La Guardia, NY.....	316	305	368
29	Seattle Tacoma Int'l, WA.....	298	308	365
30	Daytona Beach Int'l, FL.....	287	303	355
31	San Francisco Int'l, CA.....	279	396	351
32	Long Beach/Daugherty, CA.....	285	299	351
33	Prescott/E. A. Love Field, AZ.....	252	284	339
34	Honolulu International, HI.....	255	270	324
35	Tulsa/Riverside, OK.....	252	272	322
36	Anchorage International, AK.....	258	273	309
37	Baltimore/Wash. Int'l, MD.....	251	258	305
38	Chicago Midway, IL.....	274	253	304
39	Orlando International, FL.....	249	254	303
40	John F. Kennedy Int'l, NY.....	243	251	301
41	Mesa/Falcon Field, AZ.....	232	238	289
42	Seattle/Boeing Field, WA.....	268	249	286
43	Grand Forks International, FL.....	255	249	286
44	Fort Lauderdale/Hollywood, FL.....	237	233	281
45	Portland International, OR.....	224	236	278
46	Pontiac/Oakland Co. Int'l, MI.....	243	242	278
47	Tucson International, AZ.....	211	227	273
48	Cleveland Hopkins Int'l, OH.....	216	221	262
49	Port Columbus Intl, OH.....	201	217	256
50	Albuquerque International, NM.....	186	217	255

50 Busiest Radar Approach Control Facilities

CY 2002 Rank	Facilities/State	Instrument Ops (000s)		
		Jan-Oct 2003*	Jan-Oct 2002	Jan-Dec 2002*
1	Southern Calif. TRACON, CA.....	1,725	1,813	2,156
2	New York TRACON, NY.....	1,637	1,676	1,986
3	Chicago TRACON, IL.....	1,180	1,186	1,416
4	Dallas/Ft Worth, TRACON, TX.....	1,051	1,081	1,289
5	Atlanta TRACON, GA.....	1,099	1,072	1,283
6	Miami International, FL.....	714	760	915
7	Bay TRACON, CA ¹	1	848	848
8	Houston TRACON, TX.....	711	691	829
9	Phoenix TRACON, AZ.....	631	646	773
10	Denver TRACON, CO.....	591	600	715
11	Philadelphia International, PA.....	530	587	692
12	Detroit TRACON, MI.....	573	582	689
13	Washington Dulles Int'l, VA.....	308	543	641
14	Minneapolis TRACON, MN.....	546	527	629
15	Salt Lake City TRACON, UT.....	510	523	621
16	Covington/Cincinnati Int'l, KY.....	532	517	617
17	St Louis TRACON, MO.....	471	520	615
18	Las Vegas TRACON, NV.....	526	513	608
19	Daytona Beach Int'l, FL.....	472	501	595
20	Charlotte/Douglas Int'l, NC.....	480	502	594
21	Orlando International, FL.....	482	499	593
22	Washington National, DC.....	586	490	591
23	San Juan CERAP, PR.....	508	487	587
24	Tampa International, FL.....	463	469	559
25	Boston TRACON, MA.....	435	478	557

* Preliminary ¹Missing 2003 data

Source: APO-130
(202) 267-3350

As of: 12/12/03

50 Busiest Radar Approach Control Facilities

CY 2002 Rank	Facilities/State	Instrument Ops (000's)		
		Jan-Oct 2003*	Jan-Oct 2002	Jan-Dec 2002*
26	Seattle/Tacoma TRACON, WA.....	451	462	542
27	Pittsburgh International, PA.....	384	449	524
28	Baltimore-Washington Int'l, MD.....	281	434	513
29	Honolulu Control Facility, HI	416	411	494
30	Memphis International, TN.....	396	395	473
31	Jacksonville Int'l, FL.....	365	378	451
32	San Antonio Int'l, TX.....	376	369	436
33	Port Columbus Int'l, OH.....	323	348	405
34	Pensacola TRACON, FL.....	359	344	403
35	Cleveland Hopkins Int'l, OH.....	313	307	363
36	Corpus Christi, TX.....	294	310	361
37	North California TRACON, CA ²	1338	130	359
38	Yankee TRACON, CT.....	246	308	357
39	Dayton International, OH.....	301	305	357
40	Palm Beach International, FL.....	297	295	356
41	Portland TRACON, OR.....	283	290	339
42	Milwaukee/Gen Mitchell Intl, WI....	275	287	337
43	Anchorage TRACON, AK.....	271	283	328
44	Austin, TX.....	272	276	328
45	Raleigh-Durham Int'l, NC.....	251	273	323
46	Kansas City International, MO.....	229	274	321
47	Oklahoma City/Will Rogers, OK	248	268	315
48	Albuquerque International, NM.....	215	266	312
49	Norfolk International, VA.....	253	262	309
50	Sacramento TRACON, CA.....	1	308	308

² Became effective in August 2002.

Automated Flight Service Stations Activity

CY 2002 Rank	AFSS/State	Flight Services (000's)		
		Jan-Oct 2003*	Jan-Oct 2002	Jan-Dec 2002
1	St. Petersburg, FL.....	954	991	1,176
2	Miami AIFSS, FL.....	976	909	1,075
3	Fort Worth, TX.....	645	701	818
4	Macon, GA.....	627	674	790
5	Lansing, MI.....	646	668	775
6	Prescott, AZ.....	553	600	706
7	Denver, CO.....	538	599	692
8	Seattle, WA.....	511	590	667
9	Leesburg, VA.....	693	562	657
10	Gainesville, FL.....	563	410	654
11	Raleigh, NC.....	521	549	640
12	Kankakee, IL.....	513	544	633
13	San Angelo, TX.....	503	524	618
14	Princeton, MN.....	477	533	613
15	Bridgeport, CT.....	486	526	594
16	Green Bay, WI.....	436	477	547
17	Millville, NJ.....	534	462	537
18	Oakland AIFSS, CA.....	411	451	492
19	Anniston, AL.....	406	477	511
20	Mc Alester, OK.....	414	442	518
21	Terre Haute, IN.....	384	438	510
22	Conroe, TX.....	425	427	505
23	Hawthorne, CA.....	398	418	487
24	Columbia, MO.....	384	416	487
25	Kenai AIFSS, AK.....	363	406	459
26	Anderson, SC.....	363	380	444
27	Albuquerque, NM.....	350	366	428
28	Williamsport, PA.....	398	367	422
29	Cleveland, OH.....	326	356	413
30	Altoona, PA.....	391	353	406

* Preliminary

Source: ATX-400
(202) 385-4734

Automated International Flight Service Station--AIFSS

As of: 10/06/03

Automated Flight Service Stations Activity

CY 2002 Rank	AFSS/State	Flight Services (000's)		
		Jan-Oct 2003*	Jan-Oct 2002	Jan-Dec 2002
31	St. Louis, MO.....	322	346	404
32	Jonesboro, AR.....	317	338	397
33	San Juan AIFSS, PR.....	269	336	396
34	Riverside, CA.....	327	320	383
35	Grand Forks, ND.....	297	324	380
36	Reno, NV.....	326	326	379
37	Mc Minnville, OR.....	305	328	374
38	Bangor, ME.....	302	325	374
39	Nashville, TN.....	306	307	363
40	Burlington, VT.....	342	319	362
41	Dayton, OH.....	295	313	361
42	Wichita, KS.....	276	302	355
43	Islip AIFSS, NY.....	320	306	352
44	San Diego, CA.....	228	294	343
45	Rancho Murieta, CA.....	287	289	340
46	De Ridder, LA.....	261	275	326
47	Cedar City, UT.....	269	277	321
48	Fort Dodge, IA.....	228	256	296
49	Louisville, KY.....	225	236	273
50	Buffalo, NY.....	221	235	268
51	Elkins, WV.....	242	226	260
52	Greenwood, MS.....	220	220	258
53	Huron, SD.....	207	201	237
54	Great Falls, MT.....	178	200	227
55	Columbus, NE.....	194	183	225
56	Honolulu, HI.....	202	188	225
57	Jackson, TN.....	164	180	209
58	Fairbanks, AK.....	159	173	197
59	Casper, WY.....	144	161	184
60	Boise, ID.....	154	159	182
61	Juneau, AK.....	129	125	134

Airports

Number of U.S. Airports ¹ (As of December 31)

	2002	2001	2000
Total Airports	19,572	19,356	19,281
Public Use Airports.....	5,286	5,294	5,317
# with Paved Runways.....	3,940	3,947	3,953
# with Unpaved Runways....	1,346	1,347	1,364
# with Lighted Runways.....	4,024	4,034	4,035
# with Unlighted Runways...	1,262	1,260	1,282
Private Use Airports.....	14,286	14,062	13,964
# with Paved Runways.....	4,632	4,555	4,463
# with Unpaved Runways...	9,654	9,507	9,501
# with Lighted Runways.....	1,183	1,118	1,010
# with Unlighted Runways..	13,103	12,944	12,954
Public use airports abandoned...	16	26	13
Private use airports abandoned.	121	220	156
Certificated Airports*	633	635	651
Civil	558	560	563
Military	75	75	88

¹ Includes civil and joint-use civil-military airports, heliports, STOLports, and seaplane bases in the U.S. and its territories.

² Preliminary

* Certificated airports serve Air Carrier Operations with aircraft seating more than 30 passengers. (FAR Part 139).

Source: AAS-330
(202) 267-8752

As of: 12/31/02

National Airspace Total System Delays

Year	Jan	Feb	Mar	Apr	May	Jun	Jul	Aug	Sep	Oct	Nov	Dec	YTD Total
2003*	16,159	18,260	25,387	17,474									77,280
2002	14,158	13,821	20,020	24,027	28,533	33,770	32,304	29,056	24,493	25,266	17,712	22,489	285,649
2001	27,894	31,599	30,040	30,260	36,460	41,607	40,037	49,423	18,628	13,365	13,249	15,541	348,103
2000	26,015	27,208	32,205	35,332	36,570	50,114	44,430	47,893	43,357	43,794	34,365	29,006	450,289 r/
1999	24,345	19,851	23,180	34,046	39,533	41,602	45,162	37,189	32,833	28,223	23,330	24,822	374,116 r/

Delays of 15 minutes or longer

r/ Revised

* Preliminary information that is subjected to change

As of: 04/30/03

Source: ATT-220
(703) 904-4470

Aircraft

U.S. Air Carrier Activity

	CY 2002	CY 2001	CY 2000
Total Number of Aircraft¹.....	19,578	19,445	19,399
Type of Carrier			
Domestic, flag, supplemental, scheduled, cargo air carriers, and commercial operators.....	7,576	7,556	7,368
Commuter Air Carriers and Air Taxis.....	12,002	11,889	12,031
Total Number of Aircraft¹.....	19,578	19,445	19,399
Type of Aircraft			
Jet.....	8,675	8,294	7,769
Turboprop.....	3,777	3,752	3,857
Piston.....	4,605	4,970	5,358
Rotary Wing.....	2,521	2,429	2,415
Air Carrier Traffic Statistics² (Millions)*			
Passenger miles flown.....	654,068	664,849	708,926
Passenger enplanements.....	630	622	678
Ton miles.....	95,919	94,683	116,096
Aircraft miles flown.....	6,838	6,814	7,039
Passenger load factor ³			
Domestic.....	70.3%	69.1%	71.2%
International.....	76.6%	72.8%	76.0%

¹ Source: Vital Information System

² Includes domestic and international scheduled service, of Certificated Route Air Carriers only.

³ Proportion of aircraft seating capacity that is sold.

As of: 12/23/03

Source: AFS-40
(202) 385-4514
*BTS (K-25)
(202) 366-8513

U.S. General Aviation and Air Taxi Activity

(Calendar Years)

	Estimated Active Aircraft (thousands)		Estimated Hours Flown (Millions)	
	2001	2000	2001	2000
Total	211.2	217.5	29.1	31.0
By Type Aircraft				
Piston.....	163.3	170.5	20.9	22.2
Turboprop.....	6.6	5.8	1.9	2.0
Jet.....	7.8	7.0	2.7	2.8
Rotary Wing.....	6.8	7.2	2.1	2.3
Other.....	6.5	6.7	0.3	0.4
Experimental.....	20.4	20.4	1.2	1.3
By Type Flying				
Corporate.....	7.8	11.0	2.7	3.8
Business.....	21.6	25.2	3.4	3.6
Personal.....	158.3	148.2	12.4	11.7
Instructional.....	10.5	14.9	4.6	5.4
Aerial Application.....	2.9	4.3	1.0	1.4
Aerial Observation.....	4.6	5.1	1.5	1.6
Aerial Other.....	0.5	1.0	0.2	N/A
External Load.....	0.2	0.2	0.1	0.2
Other Work.....	1.1	1.8	0.3	0.5
Sightseeing.....	0.5	0.9	0.2	0.2
Air Tours.....	0.3	0.3	0.2	0.2
Air Taxi.....	1.9	3.7	2.2	1.7
Air Medical Services...	1.0	1.0	0.4	0.4

N/A = Not Applicable

Source: APO-110

As of: 1/16/03

(202) 267-3103

Aircraft Certification Service

Aircraft Certification Mission and Program Profiles

	FY 2002	FY 2001
Type Certificates/Supplemental Type Certificates Issued.....	830	817
Other Design Approvals Issued.....	5,820	5,900
Production Approvals (Including Amendments) Issued.....	2,678	2,729
Airworthiness Certificates Issued.....	757	619
New Airworthiness Directives (AD) Issued.....	389	529
New Designees (Representative of the Administrator) Appointed.....	1,019	870
Total Active Designees.....	4,813	4,750

As of: 9/30/02

Source: AIR-503
(202) 267-7260

Industry Trends

Scheduled U.S. Air Carrier Traffic and Financial Trends

	FY 2002	FY 2001	Numerical Change	Percent Change
TRAFFIC				
ASM'S (in millions)				
Majors.....	802,078	895,266	(93,188)	(10.4)
Nationals.....	70,970	66,558	4,412	6.6
Regionals.....	1,317	928	389	41.9
Totals.....	874,365	962,753	(88,387)	(9.2)
RPM's (in millions)				
Majors.....	571,001	636,891	(65,890)	(10.3)
Nationals.....	48,223	44,903	3,320	7.4
Regionals.....	746	521	225	43.3
Totals.....	619,969	682,315	(62,346)	(9.1)
Load Factor (in percent)				
Majors.....	71.2	71.1	0.1	
Nationals.....	67.9	67.5	0.5	
Regionals.....	56.6	56.1	0.6	
Totals.....	70.9	70.9	0.0	
FINANCIAL				
Revenues (in millions)				
Majors.....	\$94,132	\$112,039	(\$17,907)	(16.0)
Nationals.....	8,688	10,872	(2,184)	(20.1)
Regionals.....	976	903	73	8.1
Totals.....	\$103,796	\$123,814	(\$20,017)	(16.2)
Expenses (in millions)				
Majors.....	\$104,427	\$117,081	(\$12,653)	(10.8)
Nationals.....	8,989	10,946	(1,957)	(17.9)
Regionals.....	967	911	56	6.1
Totals.....	\$114,384	\$128,938	(\$14,554)	(11.3)
Operating Profit/Loss (in millions)				
Majors.....	(\$10,295)	(\$5,042)	(\$5,253)	
Nationals.....	(300)	(74)	(227)	
Regionals.....	9	(8)	17	
Totals.....	(\$10,587)	(\$5,124)	(\$5,463)	

Source: APO-110
(202) 493-4236

As of: 07/03/03

Aviation Forecasts

Actual Forecast
FY 2002 FY 2006

FAA FACILITY WORKLOAD

Aircraft Handled by FAA ARTCC's (Millions)

Air Carrier.....	22.8	24.3
Air Taxi/Commuter.....	8.8	10.1
General Aviation.....	8.2	8.7
Military.....	3.9	3.9

Operations Logged by FAA Towers (Millions)

Airport.....	64.9	69.2
Instrument.....	48.7	52.1

Flight Services Logged by Flight Services Stations (Millions)

	29.0	30.7
--	------	------

CIVIL AVIATION ACTIVITY

Certificated Route Air Carrier

Revenue Passenger Enplanements (Millions)*.....	536.9	616.7
Revenue Passenger Miles (Billions)*.....	601.3	694.4

Air Carrier Aircraft.....

	5,214	5,426
--	-------	-------

General Aviation Estimated

Hours Flown (Millions)**.....	29.5	31.2
Active Aircraft (Thousands)**.....	211.0	217.1

ESTIMATED FUEL CONSUMED BY U.S. DOMESTIC CIVIL AVIATION (Millions of Gallons)

Jet Fuel

Air Carrier.....	17,521	19,758
General Aviation.....	1,015	1,227

Aviation Gas

Air Carrier.....	2	2
General Aviation.....	319	337

Active Pilots (Thousands)**.....	661,358	690,775
---	----------------	----------------

** Calendar Year

Source: APO-110
(202) 493-4236

As of: 3/31/03

Active Pilots and Nonpilots (As of 31 December)

	2002		2001	
	Total	Women	Total	Women
Pilot-Total	631,760	38,257	612,274	35,776
Student.....	85,991	10,082	86,731	10,230
Private.....	245,230	15,906	243,823	13,894
Commercial.....	125,920	7,454	120,502	5,932
Airline Transport.....	144,706	4,792	144,702	4,630
Other ¹	29,913	23	16,516	1,090
Nonpilot-Total²	515,570	17,114	513,100	17,114
Mechanic.....	315,928	5,295	310,850	5,295
Repairmen.....	37,114	1,789	40,085	1,789
Ground Instructor.....	73,658	5,169	72,261	5,169
Flight Engineer.....	63,681	2,124	65,398	2,124
Other ³	25,189	2,737	24,506	2,737
Flight Instructor	86,089	5,386	82,875	5,386

¹ Includes helicopter (only), glider (only), and recreational pilot certificates. Include Glider pilots represents pilots who received a medical examination within the last 25 months. Lighter-than-air type ratings are no longer being issued.

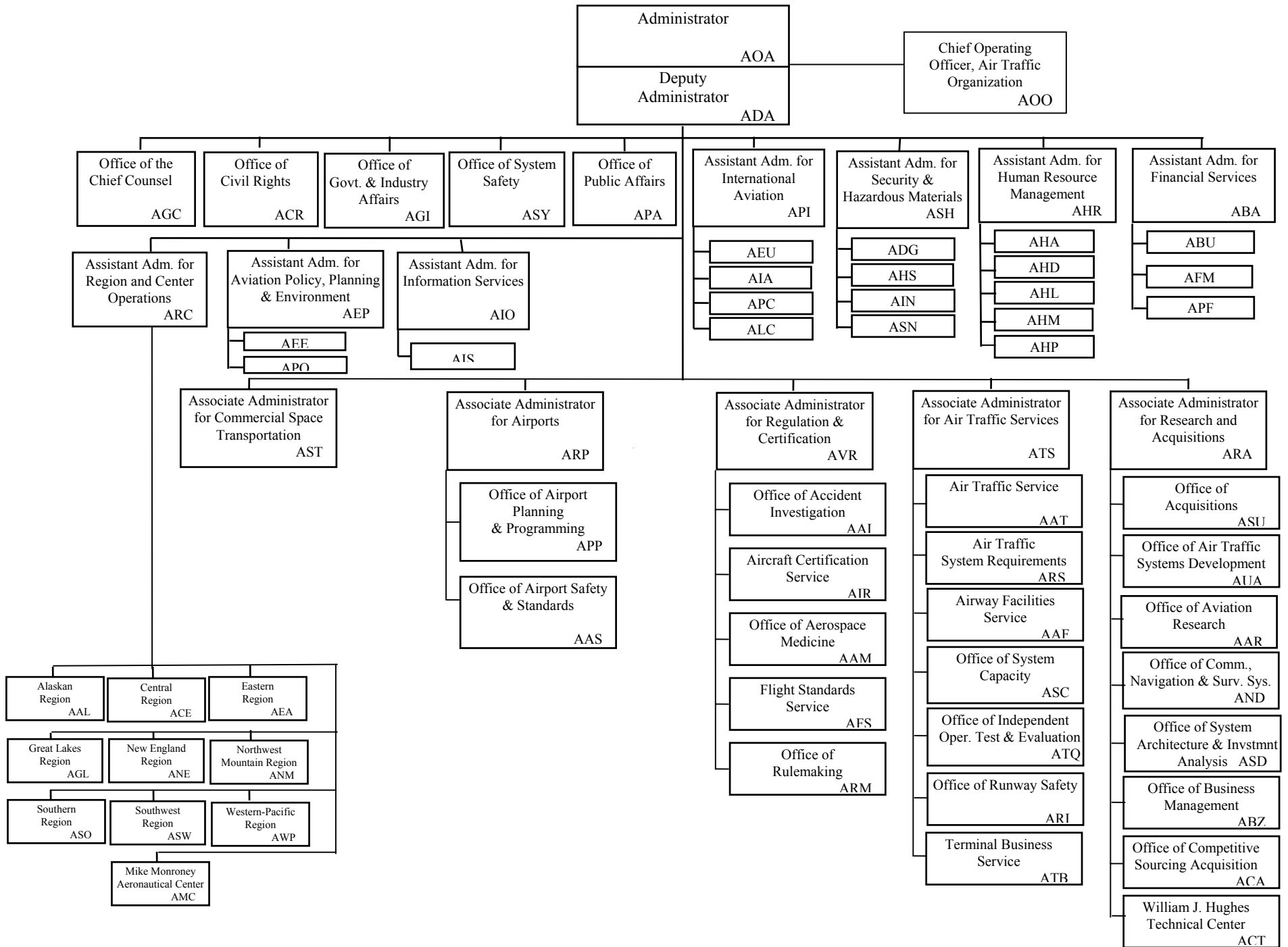
² Excludes non-pilots 70 years old or over in all certificate types except flight engineers and flight navigators.

³ Includes flight navigators, parachute riggers, and dispatchers.

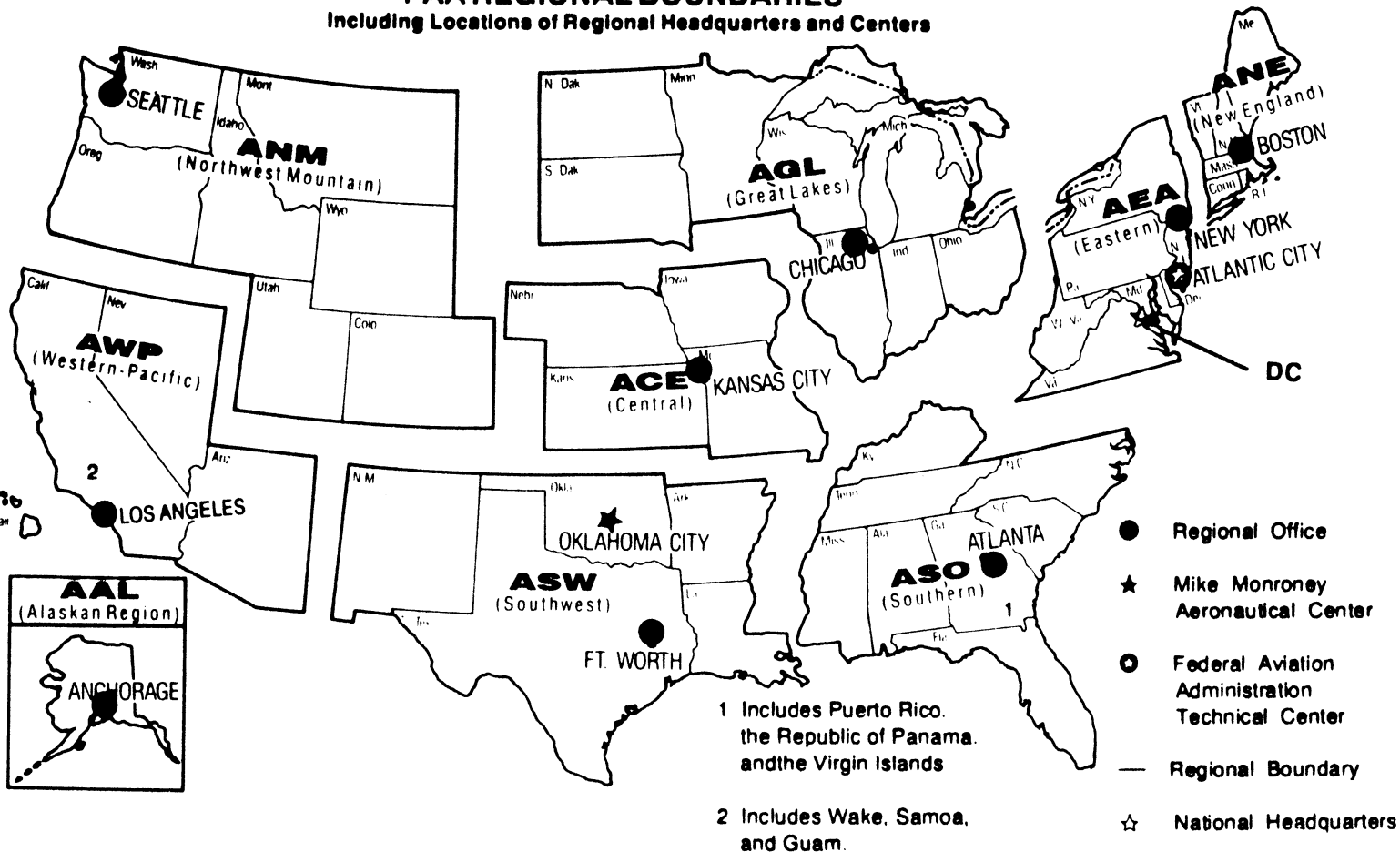
As of 12/31/02

**Source: APO-110
(202) 267-3352**

FEDERAL AVIATION ADMINISTRATION



**U.S. DEPARTMENT OF TRANSPORTATION
Federal Aviation Administration
FAA REGIONAL BOUNDARIES**
Including Locations of Regional Headquarters and Centers



U.S. Commercial Space Transportation Activity and AST Licensing

	CY 2001	CY 2002	CY 2003 (Projected)
Licensed Commercial Launches			
TOTAL	6	7	10
Number of Orbital Launches	5	6	10
Number of Sub-Orbital Launches	1	1	0
By Launch Vehicle Type			
Delta Family (Boeing Company)	1	2	0
Atlas Family (Lockheed Martin)	1	3	4
Pegasus (Orbital Sciences Corp.)	0	0	1
Taurus (Orbital Sciences Corp.)	1	0	1
Athena 1&2 (Lockheed Martin)	0	0	0
Zenit 3SL (KB Yuzhnoye, Ukraine)	2	1	4
other suborbital	1	1	0
By Launch Site (Federal)			
Cape Canaveral Air Station, FL	1	4	4
Vandenberg AFB, CA	2	1	2
Kwajalein Missile Range	0	0	0
By Launch Site (Commercial)			
California Spaceport	0	0	0
Florida Space Authority	0	0	0
Virginia Space Flight Center	0	0	0
Kodiak Launch Complex (Alaska)	0	0	0
International Sites/Pacific Ocean	3	2	4

Source: AST
(202) 385-4804

As of: 01/27/03

United States Commercial Space Launch Schedule, CY 2003

(launch dates are subject to change)

Payload (Operator)/ Description	Launch Company/ Vehicle	Launch Date/ Launch Site
<i>Hellas-Sat (Greece)</i> Comm. Satellite	Lockheed Martin (International Launch Services, ILS) Atlas V	March Cape Canaveral Air Force Station, FL
<i>Unannounced</i> Comm. Satellite	Sea Launch Zenit 3SL	March Pacific Ocean Platform
<i>Asia Sat 4 (China)</i> Comm. Satellite	Lockheed Martin (International Launch Services, ILS) Atlas IIIB	April Cape Canaveral Air Force Station, FL
<i>Orb View 3 (U.S.)</i> Remote Sensing Satellite	Orbital Sciences Corp. Pegasus XL	April Vandenberg Air Force Base, CA
<i>Rainbow (U.S.)</i> Comm. Satellite	Lockheed Martin (ILS) Atlas V	May Cape Canaveral Air Force Station, FL
<i>Unannounced</i>	Sea Launch Zenit 3SL	2 nd Quarter Pacific Ocean Platform
<i>Thuraya (United Arab Emirates)</i> Comm. Satellite	Sea Launch Zenit 3SL	3 rd Quarter Pacific Ocean Platform
<i>SuperBird 6 (Japan)</i> Comm. Satellite	Lockheed Martin (ILS) Atlas IIAS	September Cape Canaveral Air Force Station, FL
<i>ROCSAT 2 (TAIWAN)</i> Remote Sensing	Orbital Sciences Taurus XL	October Vandenberg Air Force Base, CA
<i>Unannounced</i> Remote Sensing	Sea Launch Zenit 3SL	4 th Quarter Pacific Ocean Platform

As of: 1/24/03

Source: AST
(202) 267-7989

FAA Resources

FAA Employment (Permanent Employees)¹

	FY 02	FY 01 Revised
Line of Business		
Air Traffic Services (ATS).....	36,238	36,349
Regulation and Certification (AVR).....	6,422	6,195
Civil Aviation Security (ACS).....	*	1,221
Airports (ARP).....	461	472
Research and Acquisitions (ARA).....	1,894	1,858
Comm. Space Transportation (AST)....	58	44
Staff Offices.....	3,761	3,762
Total.....	48,853	49,901
Region/Center/Headquarters (included in above total)		
Aeronautical Center.....	1,581	1,582
Alaskan.....	1,399	1,406
Central.....	2,509	2,587
Eastern.....	5,350	5,411
Great Lakes.....	6,474	6,588
New England.....	1,947	1,996
Northwest Mountain.....	4,171	4,224
Southern.....	7,690	7,883
Southwest.....	5,335	5,430
Western-Pacific.....	5,435	5,661
Washington Headquarters (only) ²	3,980	4,109
Washington Headquarters Field ³	1,997	2,055
Technical Center.....	985	969

¹ Full time permanent and part time permanent employees only.

² Washington Headquarters employees physically located in FOB-10A and surrounding areas (i.e. Portals, Market Square, etc.).

³ Washington Headquarters employees physically located in the Field (i.e. Technical Center, Aeronautical Center, etc.)

* ACS transferred to Transportation Security Administration (TSA). The portion of ACS that remained in FAA will be included in FY03.

As of: 09/30/02

Source: APF-100
(202) 267-9946

FAA Percent Minority & Female Employment¹

Lines of Business/Region/Center/Headquarters	% Minority		% Female	
	FY 02	FY 01 r	FY 02	FY 01r
AirTraffic Services (ATS).....	17.2	16.8	19.2	19.1
Regulation and Certification (AVR).....	18.4	17.9	28.5	28.3
Civil Aviation Security (ACS).....	*	27.7	*	42.3
Airports (ARP).....	24.7	23.3	38.8	39.6
Research and Acquisitions (ARA).....	28.7	27.5	37.2	38.2
Commercial Space Transportation (AST).....	48.2	45.4	25.9	31.8
Staff Offices.....	32.2	32.0	54.2	54.0
Total.....	19.0	18.9	22.4	24.3
Aeronautical Center.....	23.9	23.7	44.1	43.4
Alaskan.....	13.7	13.8	23.7	25.3
Central.....	14.1	14.2	24.8	24.7
Eastern.....	15.2	15.4	19.2	19.4
Great Lakes.....	10.7	10.7	20.1	20.6
New England.....	7.3	7.7	20.7	21.0
Northwest Mountain.....	11.9	12.0	22.1	22.7
Southern.....	20.5	20.3	19.6	19.9
Southwest.....	22.0	21.2	20.1	20.6
Western-Pacific.....	28.7	28.6	20.9	20.8
Washington Headquarters (only) ²	33.5	32.5	43.9	45.0
Washington Headquarters Field ³	18.9	18.1	31.8	31.0
Technical Center.....	21.0	20.1	31.8	32.4

¹ Full-time permanent, and part-time permanent employees only (FTE 1111 & 1132).

² Washington Headquarters employees physically located in FOB-10A and surrounding areas (i.e. Portals, Market Square, etc.).

³ Washington Headquarters employees physically located in the Field (i.e. Technical Center, Aeronautical Center, etc.).

* ACS transferred to Transportation Security Administration(TSA). The portion of ACS that remained in FAA will be included in FY03.

r Revised

As of: 09/30/02

Source: APF-100
(202) 267-9946

Major Work Force Employment

	Employment ¹				
	FY03	FY02	FY01	%Chg. FY03 - FY02	Actual Change
Air Traffic Controller Work Force ATCS ² (bargaining unit employees)	17,598	17,501	17,389	0.6%	97
Traffic Management Coordinators ² Operations Supervisors ²	15,386	15,238	14,997	1.0%	148
Flight Service Stations	635	654	666	-2.9%	-19
Field Maintenance (210-211 only)	1,577	1,609	1,726	-2.0%	-32
Airports Work Force	2,749	2,864	2,934	-4.0%	-115
Research & Acquisition Work Force ³	7,770	7,901	8,188	-1.7%	-131
Aircraft Certification	467	454	461	2.9%	13
Flight Standards Work Force	1,791	1,958	1,910	-8.5%	-167
	1,178	1,123	1,025	4.9%	55
	4,628	4,533	4,476	2.1%	95

¹ Full time permanent appointments (operations direct).

² Included in Air Traffic Controller Work Force Total.

³ Includes direct operations, F&E, and R,E&D.

Note: Traffic Management Supervisors (TMS) are no longer included in Controller Work Force.

Security Work Force removed at this time incomplete data.

Source: APF-100

Labor Relations

	BARGAINING UNITS	LABOR AGREEMENTS	EMPLOYEES REPRESENTED
Unions.....	46	23	38,934
AFGE.....	11	7	1,530
AFSCME (HQ).....	5	0	2,064
LIUNA.....	1	1	171
NAATS.....	1	1	2,257
NAGE.....	3	3	327
NATCA (AT).....	4	3	16,756
NATCA (AF).....	2	1	1,468
NATCA (Other).....	8	0	1,613
NFFE.....	3	2	793
PAACE.....	3	2	402
PASS (AF/AEA).....	1	1	7,619
PASS (AVN).....	1	1	318
PASS (AFS).....	2	1	3,454
PASS (AIR).....	1	0	162

AFGE	--American Federation of Government Employees
AFSCME	--American Federation of State, County, and Municipal Employees
LIUNA	--Laborer's International Union of North America
NAATS	--National Association of Air Traffic Specialists
NAGE	--National Association of Government Employees
NACTA	--National Air Traffic Controllers Association
NFFE	--National Federation of Federal Employees
PAACE	--Professional Association of Aeronautical Center Employees
PASS	--Professional Airway System Specialists

Source: AHL-ZUU
(202) 267-3375

As of: 2/20/03

FAA Finances

(In Millions of Dollars)

	FY 2002 ¹	FY 2003 ^{2,3}	FY 2004 ³
	Actual	Est.	Est.
Budget Authority			
Grants-In-Aid (Obliquation Lim/Approp).....	3,475	3,400	3,400
Research, Engineering, & Development....	245	124	100
Facilities and Equipment.....	3,006	2,981	2,916
Operations.....	7,077	7,077	7,591
Total.....	13,803	13,582	14,007
Obligations Incurred--Operations			
Appropriation by Line of Business			
Air Traffic Services.....	5,477	5,764	6,097
Regulation and Certification.....	767	794	873
Civil Aviation Security.....	170	0	0
Research and Acquisitions.....	194	202	218
Commercial Space Transportation.....	12	12	13
Regions/Center Operations.....	86	89	85
Human Resources.....	69	71	82
Financial Services.....	49	52	50
Staff Offices.....	110	108	143
Emergency Response Fund	215	27	0
Information Services/CIO	0	5	30
Total.....	7,149	7,124	7,591
Airport Grant Obligations (NET)			
Primary Airports & Cargo.....	1,125	1,125	1,061
States/Territories/Insular/Alaska Supp.....	666	669	684
Carryover Entitlements.....	315	250	355
Discretionary Fund.....	1,202	1,192	1,213
Total.....	3,308	3,236	3,313
Total FAA Outlays.....	13,096	13,371	14,162
Trust Fund Receipts from Excise Taxes			
Passenger Ticket Tax.....	4,726	4,655	5,180
Passenger Flight Segment Tax.....	1,532	1,888	2,032
Waybill Tax.....	474	433	461
Fuel Tax	789	748	778
International Departure/Arrival Tax.....	1,282	1,426	1,526
Rural Airports Tax.....	80	75	83
Frequent Flyer Tax.....	148	155	158
Interest on Investment.....	860	708	709
Offsetting Collections.....	178	136	136
Total.....	10,069	10,224	11,063

Numbers may not add due to rounding.

¹ FY02 includes Emergency Supplemental Funding per P.L. 107-117(Operations, \$200M; F&E, \$108.5M; R,E&D, \$50M; and Grants-in-Aid, \$175M).

² FY03 estimates reflect the Administration's 2003 policy proposals because an FY03 Appropriation had not been enacted at the time the FY04 President's Budget was prepared.

³ FY03 and FY04 exclude Civil Service Retirement System and Federal Employee Health Benefits accruals.

Source: ABU-100
(202) 267-9070

As of: 2/6/03

FAA NAS Operational Facilities and FAA Aircraft (As of December 31)

	2002	2001	2000
NAS Operational Facilities¹	40,746	40,910	40,921
Communications.....	14,194	14,145	14,103
Automation.....	4,049	4,000	3,889
Environment.....	6,494	6,552	6,620
Navigation.....	11,104	11,210	11,211
Surveillance.....	1,871	1,833	1,794
Weather.....	3,034	3,170	3,304
Air Traffic Control Facilities²			
Air Route Traffic Control Center.....	21	21	21
Airport Traffic Control Tower.....	449	448	496
Flight Service ³	76	76	75
Flight Service Stations.....	16	16	14
Automated Flight Service Stations.....	60	60	61

¹ Excludes non-federal facilities and foreign facilities.

² Included in NAS operational facilities.

³ Flight Service include Flight Service Stations and Automated Flight Service Stations.

As of: 12/31/02

Source: AOP-200
(202) 267-3628

FAA Officials

Washington Headquarters

Routing Symbol	Officials
AOA	Administrator Marion C. Blakey, 202-267-3111 David Mandell, Chief of Staff, 202-267-3111 Louise E. Maillett, Senior Counsel to AOA, 202-267-7417
ADA	Deputy Administrator Bobby Sturgell, 202-267-8111 Shirley S. Miller, Senior Advisor to ADA, 202-267-8111
AOZ	<i>Free Flight</i> <i>Director, John Thornton, 202-220-3300</i>
AOO*	Chief Operating Officer, Air Traffic Organization Russell G. Chew, 202-493-5602
ABA	Assistant Administrator for Financial Services John F. Hennigan, CFO (Actg.), 202-267-9105 Deputy, John F. Hennigan, 202-267-8928
ABU	<i>Office of Budget</i> <i>Director, Alex Keenan, 202-267-8010</i>
AFM*	<i>Office of Financial Management</i> <i>Director, Vacant, 202-267-3018</i>
APF	<i>Office of Cost and Performance Management</i> <i>Director, Tim Lawler, 202-267-7140</i>
ACR	Assistant Administrator for Civil Rights Fanny Rivera, 202-267-3254 Deputy, Barbara A. Edwards, 202-267-3264
AEP	Asst. Admin. for Aviation Policy, Planning & Environment Sharon L. Pinkerton, 202-267-3927 Deputy, Vacant, 202-267-7954
AEE	<i>Office of Environment and Energy</i> <i>Director, Carl Burtleson, 202-267-3576</i>
APO	<i>Office of Aviation Policy and Plans</i> <i>Director, John M. Rodgers, 202-267-3274</i>
AGC	Chief Counsel Andrew B. Steinberg, 202-267-3222 Deputy, James W. Whitlow, 202-267-3773
AGI*	Asst. Administrator for Government & Industry Affairs David Balloff, 202-267-3277 Deputy, Vacant, 202-267-8211
AHR*	Asst. Administrator for Human Resource Management Ventris C. Gibson, 202-267-3456 Deputy, Mary Ellen Dix, 202-267-3850 Dpty. for Labor Relations, Raymond B. Thoman, 202-267-3850
AHA	<i>Office of the Accountability Board</i> <i>Director, Maria Fernandez-Greczmiel, 202-267-3065</i>

* Updated this issue
As of: 11/13/03

Source: APF-100
(202) 267-9946

FAA Officials

Washington Headquarters--(Cont)

Routing Symbol	Officials
AHD*	<i>Office of Corporate, Learning & Development</i> <i>Director Darlene Freeman, 202-267-9041</i>
AHL	<i>Office of Labor & Employee Relations</i> <i>Director, Melvin Harris, 202-267-3979</i>
AHM	<i>Center for Management Development</i> <i>Director, Barbara J. Smith, 386-446-7136</i>
AHP	<i>Office of Personnel</i> <i>Director, Roger M. Edwards, 202-267-3979</i>
AIO	Assistant Administrator for Information Services Daniel J. Mehan, CIO, 202-493-4570 Deputy, Arthur Pyster, 202-493-4570
AIS	<i>Office of Information Systems Security</i> <i>Director, Michael F. Brown, 202-267-7104</i>
APA	Assistant Administrator for Public Affairs Greg Martin, 202-267-3883 Deputy, Laura Brown, 202-267-3883
API	Asst. Administrator for International Aviation Douglas E. Lavin, 202-267-3033 Deputy, Vacant, 202-267-3927
AIA	<i>Office of International Aviation</i> <i>Director, Ava L. Wilkerson, 202-267-3213</i>
ARC	Assistant Administrator for Region/Center Operations Ruth Leverenz, 817-222-5001 / 202-267-7369
ASH*	Asst. Administrator for Security & Hazardous Materials Lynne A. Osmus, 202-267-7211 Deputy, Eugene Ross Hamory, 202-267-7211
ADG*	<i>Office of Hazardous Materials</i> <i>Director, William Wilkening, Jr., 202-267-9864</i>
AHS*	<i>Office of Operations</i> <i>Director, Willie Gripper, 202-267-7211</i>
AIN*	<i>Office of Internal Security</i> <i>Director, Thomas Ryan, 202-366-1146</i>
ASN*	<i>Office of Investigations</i> <i>Director, Steven G. Keenley, 202-366-1246</i>
ASY	Assistant Administrator for System Safety Christopher A. Hart, 202-267-3611 Deputy, Daniel C. Hedges, 202-267-3611
ARA	Associate Administrator for Research and Acquisitions Charles E. Keegan, 202-267-7222 Deputy, Dennis DeGaetano, 202-267-7222
AAR	<i>Office of Aviation Research</i> <i>Director, Herman Rediess, Ph.D., 202-267-9251</i>
ABZ	<i>Office of Business Management</i> <i>Director, Lauraline Gregory, 202-267-3616</i>
ACA	<i>Office of Competitive Sourcing Acquisition</i> <i>Director, Joann Kansier, 202-385-7749</i>
AND	<i>Office of Communications, Navigation, and Surveillance Sys.</i> <i>Director, Daniel P. Salvano, 202-267-3200</i>

FAA Officials

Washington Headquarters--(Cont.)

Routing Symbol	Officials
ASD	Office of System Architecture and Investment Analysis Director, John A. Scardina, 202-385-7100
ASU	Office of Acquisitions Director, Gilbert B. Devey, 202-267-8513
AUA	Office of Air Traffic Systems Development Director, Gregory D. Burke, 202-493-0237
ARP*	Associate Administrator for Airports Woodie Woodward, 202-267-9471 Deputy, Catherine M. Lang, 202-267-8738
AAS	Office of Airport Safety and Standards Director, David L. Bennett, 202-267-3053
APP*	Office of Airport Planning & Programming Director, Vacant, 202-267-8775
AST	Assoc. Adm. for Commercial Space Transportation Patricia Grace Smith, 202-267-7793 Deputy, Dr. George C. Nield, 202-267-7848
ATS	Associate Administrator for Air Traffic Services Steven J. Brown, 202-267-7111 Deputy, Peter H. Challan, 202-267-3133
AAF	Airway Facilities Service Director, Steven B. Zaidman, 202-267-8181
AAT	Air Traffic Service Director, David B. Johnson, 202-267-3666
ARI	Runway Safety Director, William S. Davis, 202-385-4778
ARS	Air Traffic System Requirements Service Director, James H. Washington, 202-385-7500
ASC	Office of System Capacity and Requirements Director, Paula R. Lewis, 202-267-7370
ATB	Terminal Business Service Director, William Voss, 202-264-3000
ATQ*	Independent Operational Test and Evaluation Director, Joseph J. Schanne (Actg.), 202-267-3341
AVR	Associate Administrator for Regulation & Certification Nicholas A. Sabatini, 202-267-3131 Deputy, Peggy Gilligan, 202-267-7804
AAI	Office of Accident Investigation Director, Steven B. Wallace, 202-267-9612
AAM	Office of Aviation Medicine Director, Jon L. Jordon, MD, 202-267-3535
AFS	Flight Standards Service Director, James Ballough, 202-267-8237
AIR	Aircraft Certification Service Director, John J. Hickey, 202-267-8235
ARM	Office of Rulemaking Director, Anthony F. Fazio, 202-267-9677

Duty Officer

(202) 267-3333

FAA Officials

Major Field Organizations

Routing Symbol	Officials
AAL	Alaskan Region, Regional Administrator Patrick N. Poe, 907-271-5645 222 West 7th Avenue, Box 14 Anchorage, Alaska 99513-7587 Duty Officer, 907-271-5936
ACE	Central Region, Regional Administrator Christopher Blum, 816-329-3050 901 Locust Kansas City, Missouri 64106 Duty Officer, 816-329-3000
ACT	William J. Hughes Technical Center, Director Anne Harlan, Ph.D., 609-485-6641 Atlantic City International Airport New Jersey 08405 Duty Officer, 609-485-6482
AEA	Eastern Region, Regional Administrator Arlene B. Feldman, 718-553-3000 1 Aviation Plaza 159-30 Rockaway Blvd. Jamaica, New York 11434-4809 Duty Officer, 718-553-3100
AGL	Great Lakes Region, Regional Administrator Cecelia Hunziker, 847-294-7294 2300 East Devon Avenue Des Plaines, Illinois 60018 Duty Officer, 847-294-8400
AMC	Mike Monroney Aeronautical Center, Director Lindy Ritz, 405-954-4521 6500 South MacArthur Oklahoma City, Oklahoma 73125 Duty Officer, 405-954-3583

FAA Officials

Major Field Organizations--(Cont.)

Routing Symbol	Officials
ANE	New England Region, Regional Administrator Amy Lind Corbett, 781-238-7020 12 New England Executive Park Burlington, Massachusetts 01803 Duty Officer, 781-238-7001
ANM*	Northwest Mountain Region, Regional Administrator Douglas R. Murphy, 425-227-2001 1601 Lind Avenue, S.W. Renton, Washington 98055-4056 Duty Officer, 425-227-2000
ASO	Southern Region, Regional Administrator Carolyn Blum, 404-305-5000 1701 Columbia Avenue College Park, Georgia 30337 Duty Officer, 404-305-5180
ASW	Southwest Region, Regional Administrator Ruth Leverenz, 817-222-5001 2601 Meacham Blvd. Ft. Worth, Texas 76137-4298 Duty Officer, 817-222-5006
AWP	Western-Pacific Region, Regional Administrator William C. Withycombe, 310-725-3550 15000 Aviation Boulevard Hawthorne, California 90261 Duty Officer, 310-725-3300

FAA Officials

International Area Offices

Routing Symbol	Officials
AEU	Europe, Africa, & Middle East Area Office, Director Paul Feldman, 011-322-508-2700 American Embassy, Brussels PSC 82 Box 002 APO AE 09724-1011
ALC	Latin America & Caribbean Area Office, Director Joaquin Archilla, 305-716-3300 8600 NW 36th Street Miami, FL 33166
APC*	Asia-Pacific Area Office, Director Elizabeth E. Erickson, 011-65-6540-4114 American Embassy 27 Napier Road Singapore 258508

FEDERAL AVIATION ADMINISTRATION

FLIGHT PLAN 2004-2008

INCREASED SAFETY

Goal: *Achieve the lowest possible accident rate and constantly improve safety.*

Objectives:

1. Reduce the commercial airline fatal accident rate.
2. Reduce the number of fatal accidents in general aviation.
3. Reduce accidents in Alaska.
4. Reduce the risk of runway incursions.
5. Reduce cabin injuries caused by turbulence.
6. Measure the safety of the United States civil aviation system with a composite index.
7. Ensure the safety of commercial space launches.
8. Enhance the safety of FAA's air traffic systems.

Performance Targets:

Obj. 1 Reduce the airline fatal accident rate by 80% from the 1994-1996 baseline by FY 2007 and maintain this low rate in FY 2008.

Obj.2 By FY 2008, reduce the number of general aviation nonscheduled Part 135 fatal accidents to more than 325 (from 385, which represents the average number of fatal accidents for the baseline period of 1996-1998).

Obj. 3 Reduce accidents in Alaska for general aviation and all Part 135 operations by 20% by FY 2008 (from 2000-2002) average of 130 accidents per year to no more than 104 accidents per year).

Obj. 4 Reduce the number of most serious runway incursions (Categories A and B) at towered airports by at least 48% by FY 2008 (from the 2000-2002) baseline average of 52 per year to no more than 27 per year).

As of 10/01/03

Source: APO-120
(202) 267-3220

INCREASED SAFTY Performance Targets (Continued)

Obj. 5 Reduce serious injuries from turbulence accidents by 33% by FY 2008 (from the FY 1996-2000 average of 18 serious injuries per year to no more than 12).

Obj. 6 By FY 2006 implement a single, comprehensive index that provides a meaningful measure of the safety performance of the U.S. civil aviation system.

Obj. 7 No fatalities or serious injuries to the uninvolved public during commercial space launch or reentry activities.

Obj. 7 No significant damage to property that is not associated with the flight during commercial space launch or reentry activities.

Obj. 8 Apply safety risk management to all significant changes in the NAS.

Obj. 8 Reduce the number of most serious air traffic control operational errors (Categories A and B) by 15%, to no more than 563 by FY 2008.

GREATER CAPACITY

Goal: Work with local governments and airspace users to provide capacity in the United States airspace system that meets projected demand in an environmentally sound manner.

Objectives:

1. Increase airport capacity to meet projected demand.
2. Make air traffic flow over land and sea more efficient.
3. Increase or improve airspace capacity in the eight major metropolitan areas and corridors that most affect total system delay: New York, Philadelphia, Boston, Chicago, Washington/Baltimore, Atlanta, Los Angeles Basin, and San Francisco.
4. Increase on-time performance of scheduled carriers.
5. Address environmental issues associated with capacity enhancements.

Performance Targets:

Obj. 1 Achieve an airport arrival efficiency rate of 96% at the 35 OEP airports by FY 2008.

Obj. 1 Increase the Airport Arrival Capacity at the 35 OEP airports from 50,550 arrivals per day the 2000-2002 baseline, to at least 53,600 per day by FY 2008.

Obj. 1 Open as many as nine new runways, while increasing the annual service volume (ASV) of the 35 OEP airports by at least 1% annually, measured as a five-year moving average, through FY 2008.

Obj. 1 Sustain operational availability at 99% for the reportable facilities that support the 35 OEP airports.

Obj. 2 Maintain average en-route travel times among the eight major metropolitan areas.

GREATER CAPACITY Performance Targets (Continued)

Obj. 2 Beginning in FY 2005, increase to 80% the number of oceanic en-route altitude change requests that are granted through the end of FY 2008.

Obj. 3 Achieve an increase in the Airport Arrival Capacity for the eight major metropolitan areas from 21,290 arrivals per day from the 2000-2002 baseline to at least 22,000 per day by FY 2008.

Obj. 4 Through FY 2008, increase the percentage of all flights arriving within 15 minutes of schedule at the 35 OEP airports by 7%, as measured from the three-year FY 2002 baseline

Obj. 5 Reduce the number of people exposed to significant noise through FY 2008, as measured by a three-year moving average, from the three-year average for calendar year 2000-2002.

Obj. 5 Improve aviation fuel efficiency per revenue plane-mile by 1% per year through DY 2008, as measured by a three-year moving average, from the three-year average for calendar year 2000-2002.

INTERNATIONAL LEADERSHIP

Goal: increase the safety and capacity of the global civil aerospace system in an environmentally sound manner.

Objectives:

1. Promote improved safety and regulatory oversight in cooperation with bilateral, regional, and multilateral aviation partners.
2. Promote seamless operations around the globe in cooperation with bilateral, regional, and multilateral aviation partners.

Performance Targets:

Obj. 1 Provide new or expanded technical assistance and training to 30 key countries or regional authorities.

Obj. 1 Conclude new bilateral agreements recognizing safety certification and approval systems with ten key countries or regional authorities.

Obj. 1 Secure a 100% increase, over FY 2003 levels, in intellectual and financial assistance for international aviation activities from the United States and international government organizations, multilateral bank, and industry.

Obj. 1 Support creating at least four new regional aviation authorities or organizations capable of meeting globally accepted safety and efficiency standards.

Obj. 2 Ensure the United States, ICAO, and other international partners implement new techniques and key operational procedures in a consistent and timely manner.

Obj. 2 Implement RVSM in the North American Region by January 2005.

Obj. 2 Ensure that international environmental standards, recommended practices, and guidance material adopted by ICAO are globally and uniformly applied, reflect the best available technology, provide real environmental benefit, and are economically sound.

ORGANIZATIONAL EXCELLENCE

GOAL: Ensure the success of the FAA's mission through stronger leadership, a better trained workforce, enhanced cost-control measures, and improved decision-making based on reliable data.

Objectives:

1. Make the organization more effective with stronger leadership, increased commitment of individual workers to fulfill organization-wide goals, and a better prepared, better trained, diverse workforce.
2. Control costs while delivering quality customer service.
3. Make decisions based on reliable data to improve our overall performance and customer satisfaction.

Performance Targets:

Obj. 1 Increase Employee Attitude Survey scores in the areas of management effectiveness and accountability by at least 5%.

Obj. 1 Directly relates 100% all employee performance plans to FAA strategic goals and their organization's performance plans.

Obj. 1 Reduce the time it takes to hire mission critical positions by 20% over the FY 2003 baseline.

Obj. 2 By putting cost controls in place, and having a more efficient, effective workforce, the agency expects to fund at least 75% of the currently unfunded portion of the Flight plan.

Obj. 2 Complete the closeout of 100% (FY 2001 baseline) of cost reimbursable contracts by end of FY 2004 and maintain timely closure of future contracts.

Obj. 3 Make sure 80% of critical acquisition programs are both on schedule and within 10% of budget.

Obj. 3 Achieve 90% of all performance targets in the Flight Plan.

ORGANIZATIONAL EXCELLENCE Performance Targets (Continued)

Obj. 3 Increase agency scores on the American Customer Satisfaction Index.

Obj. 3 Achieve 90% of the milestones for the agency information security plan by 2008.



FAA VISION

To provide the safest, most efficient and responsive aerospace system in the world, and to be the best Federal employer, continuously improving service to customers and employees.

FAA Mission

FAA provides a safe, secure, and efficient global aerospace system that contributes to national security and the promotion of US aerospace safety.

As the leading authority in the international aerospace community, FAA is responsive to the dynamic nature of customer needs, economic conditions, and environmental concerns.

FAA VALUES

We Believe in

- ☆ Trust*
- ☆ Integrity*
- ☆ Honesty*
- ☆ Involvement*
- ☆ Teamwork*
- ☆ Diversity*
- ☆ Respect*

We Are Committed To

- ☆ Responsiveness*
- ☆ Quality*
- ☆ Timeliness*
- ☆ Fiscal Responsibility*
- ☆ Accountability*
- ☆ Communication*

We Will Achieve These Values By

- ☆ Giving people what they need, then letting them do their jobs.*
- ☆ Making timely decisions at the lowest level and respecting them.*
- ☆ Committing our best to our customers.*
- ☆ Valuing our people.*
- ☆ Being open to new ideas.*
- ☆ Speaking out for what we believe, even when it is unpopular.*
- ☆ Recognizing each person's contributions and realizing each person's full potential.*
- ☆ Collaborating across organizations.*
- ☆ Taking pride in what we do.*