

CFN Bldg 735 Safety Awareness

Fire Alarms:

There are 2 different fire alarms in the CFN. The first being the normal ringing in the event of a fire.

The second one is a temporal 3 (distinct ring) followed by a message to exit out the north(front) doors only. After evacuation go to the outdoor assembly area west side of the building.

SPECIFIC BUILDING HAZARDS:

Lab 1L17 - Pyrophoric gases, flammable gases

Clean Room Galley – Chlorine, Hydrogen Bromide, Pyrophoric gases, flammable gases

CFN Bldg 735 Safety Awareness

If you discover a fire, you should activate the Building Fire/Evacuation Alarm System.

From a safe location, call the BNL emergency notification line at x2222 or dial 911. (Cell 631-344-2222)

Give the nature and location of the fire. DO NOT HANG UP UNTIL x2222 or 911 STAFF HAVE ALREADY HUNG UP!

CFN Bldg 735 Safety Awareness

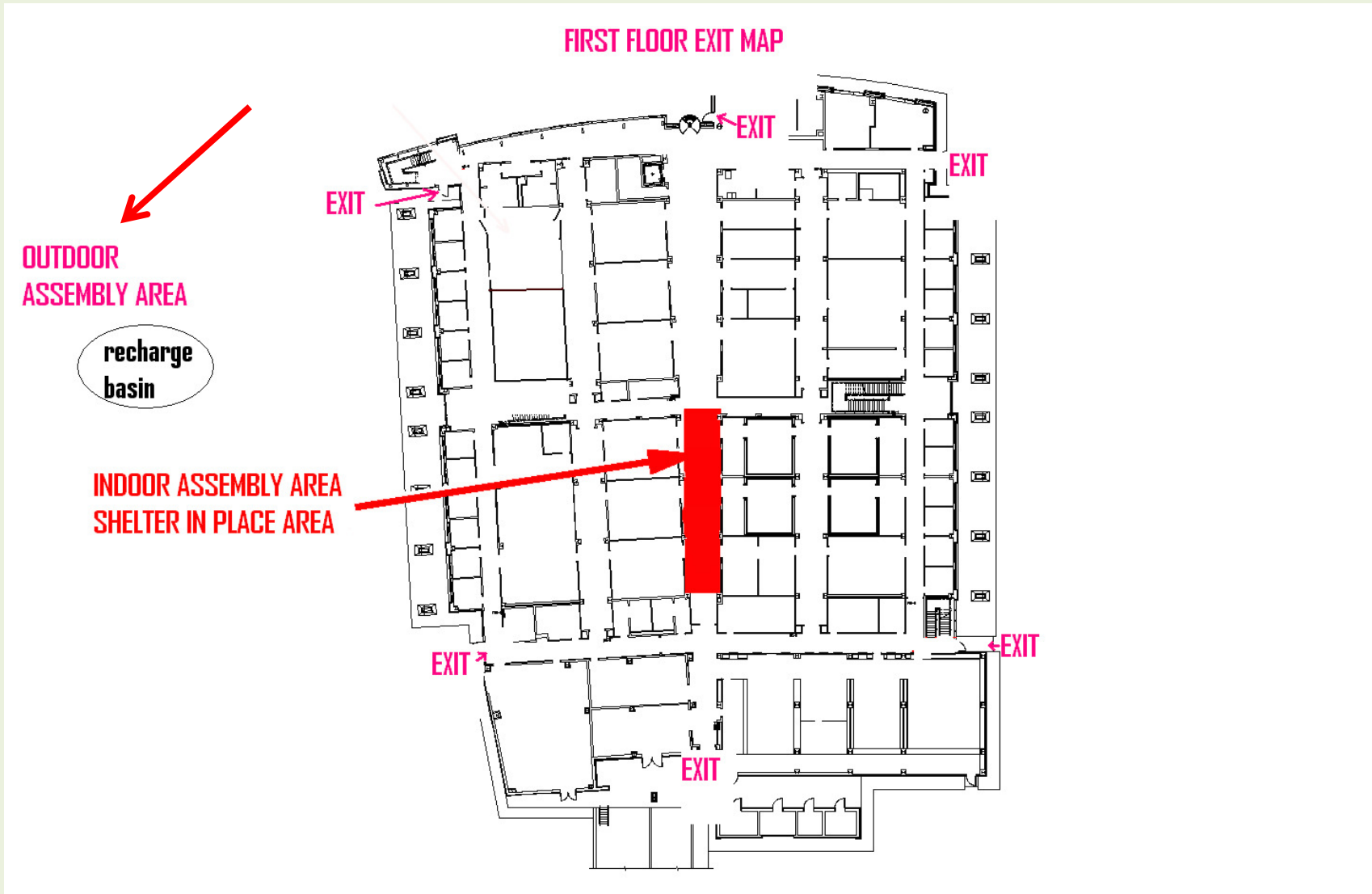
Evacuate the building utilizing the escape routes outlined in this Plan.

You may collect valuables, i.e. purse, keys, coats, etc., if within a reasonable reach and will not interfere with the evacuation of the building.

Doors should be closed, but not locked, upon evacuating.

DO NOT use elevators unless directed by emergency personal.

CFN Local Emergency Plan



CFN Local Emergency Plan

2ND FLOOR EXIT MAP

