

Via Verde Pipeline Project

Sheet XX- Land Use Codes

ID	GRIDCODE	Class_name	OID	TIPOS	CLASIF_GEN
54074	1		0		
1616423	3	Young secondary lowland dry alluvial semideciduous forest	35	Young secondary lowland dry alluvial semideciduous forest	Bosques y Arboledas
1615098	4	Lowland dry alluvial shrubland and woodland	3	Lowland dry alluvial shrubland and woodland	Bosques y Arboledas
1546473	5	Mature secondary lowland dry limestone evergreen forest	20	Mature secondary lowland dry limestone evergreen forest	Bosques y Arboledas
1556183	6	Mature secondary lowland dry limestone semideciduous forest	21	Mature secondary lowland dry limestone semideciduous forest	Bosques y Arboledas
1539217	7	Young secondary lowland dry limestone semideciduous forest	36	Young secondary lowland dry limestone semideciduous forest	Bosques y Arboledas
1538839	8	Lowland dry limestone woodland and shrubland	6	Lowland dry limestone woodland and shrubland	Bosques y Arboledas
1552117	9	Lowland dry limestone shrubland	48	Lowland dry limestone shrubland	Pastos y Arbustos
115169	21	Mature secondary lowland moist alluvial evergreen forest	23	Mature secondary lowland moist alluvial evergreen forest	Bosques y Arboledas
34373	22	Young secondary lowland moist alluvial evergreen forest	38	Young secondary lowland moist alluvial evergreen forest	Bosques y Arboledas
34776	23	Lowland moist alluvial shrubland and woodland	10	Lowland moist alluvial shrubland and woodland	Bosques y Arboledas
118961	24	Mature secondary moist limestone evergreen and semideciduous forest	25	Mature secondary moist limestone evergreen and semideciduous forest	Bosques y Arboledas
92384	25	Young secondary moist limestone evergreen and semideciduous forest	40	Young secondary moist limestone evergreen and semideciduous forest	Bosques y Arboledas
118962	26	Moist limestone shrubland and woodland	29	Moist limestone shrubland and woodland	Bosques y Arboledas
523142	27	Mature secondary lowland moist noncalcareous evergreen forest	24	Mature secondary lowland moist noncalcareous evergreen forest	Bosques y Arboledas
500477	28	Young secondary lowland moist noncalcareous evergreen forest	39	Young secondary lowland moist noncalcareous evergreen forest	Bosques y Arboledas
487936	29	Lowland moist noncalcareous shrubland and woodland	11	Lowland moist noncalcareous shrubland and woodland	Bosques y Arboledas
581064	30	Lowland moist abandoned and active coffee plantations	68	Lowland moist abandoned and active coffee plantations	Cafetales
771373	32	Young secondary montane wet alluvial evergreen forest	41	Young secondary montane wet alluvial evergreen forest	Bosques y Arboledas
770290	33	Montane wet alluvial shrubland and woodland	30	Montane wet alluvial shrubland and woodland	Bosques y Arboledas
811218	34	Mature secondary montane wet noncalcareous evergreen forest	27	Mature secondary montane wet noncalcareous evergreen forest	Bosques y Arboledas
1212793	36	Mature primary Palo Colorado and secondary montane wet noncalcareous evergreen forest	15	Mature primary Palo Colorado and secondary montane wet noncalcareous evergreen forest	Bosques y Arboledas
1207899	37	Mature primary Sierra Palm and secondary montane wet noncalcareous evergreen forest	16	Mature primary Sierra Palm and secondary montane wet noncalcareous evergreen forest	Bosques y Arboledas
1226391	38	Mature primary elfin woodland and secondary montane wet noncalcareous evergreen cloud forest	14	Mature primary elfin woodland and secondary montane wet noncalcareous evergreen cloud forest	Bosques y Arboledas
782845	39	Young secondary montane wet noncalcareous evergreen forest	42	Young secondary montane wet noncalcareous evergreen forest	Bosques y Arboledas
602806	40	Montane wet noncalcareous evergreen shrubland and woodland	31	Montane wet noncalcareous evergreen shrubland and woodland	Bosques y Arboledas
598857	44	Montane wet evergreen abandoned and active coffee plantation	69	Montane wet evergreen abandoned and active coffee plantation	Cafetales
39039	45	Mangrove forest and shrubland	55	Mangrove forest and shrubland	Humedales
1618518	47	Lowland dry riparian forest	8	Lowland dry riparian forest	Bosques y Arboledas
1623546	48	Lowland dry riparian shrubland and woodland	9	Lowland dry riparian shrubland and woodland	Bosques y Arboledas
1613730	49	Dry grasslands and pastures	45	Dry grasslands and pastures	Pastos y Arbustos
32799	51	Moist grasslands and pastures	49	Moist grasslands and pastures	Pastos y Arbustos
32807	52	Emergent herbaceous nonsaline wetlands	51	Emergent herbaceous nonsaline wetlands	Humedales
35150	53	Emergent herbaceous saline wetlands	52	Emergent herbaceous saline wetlands	Humedales
35373	54	Seasonally flooded herbaceous nonsaline wetlands	60	Seasonally flooded herbaceous nonsaline wetlands	Humedales
32230	55	Seasonally flooded herbaceous saline wetlands	61	Seasonally flooded herbaceous saline wetlands	Humedales
38628	56	Hay and row crops	46	Hay and row crops	Pastos y Arbustos
41704	57	Woody agriculture and plantations: Palm plantations	33	Woody agriculture and plantations: Palm plantations	Bosques y Arboledas
34374	60	Fine to coarse sandy beaches, mixed sand and gravel beaches	62	Fine to coarse sandy beaches, mixed sand and gravel beaches	Playas
1653230	62	Salt and mudflats	57	Salt and mudflats	Humedales
113407	64	High-density urban development	65	High-density urban development	Desarrollados o Baldi
33221	65	Low-density urban development	66	Low-density urban development	Desarrollados o Baldi
38999	66	Artificial barrens	64	Artificial barrens	Desarrollados o Baldi
33853	67	Freshwater	53	Freshwater	Humedales
37425	68	Salt water	59	Salt water	Humedales
33222	69	Lowland moist riparian forest	12	Lowland moist riparian forest	Bosques y Arboledas
43719	70	Lowland moist riparian shrubland and woodland	13	Lowland moist riparian shrubland and woodland	Bosques y Arboledas



Via Verde Pipeline Project

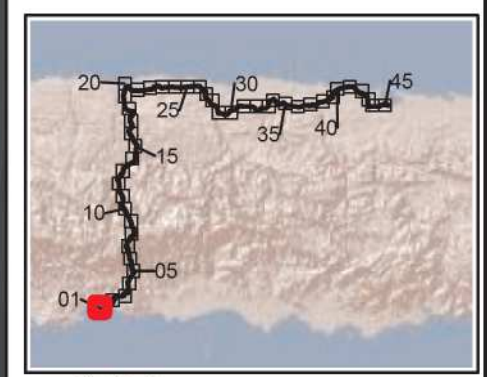
Ecoelectrica LNG Terminal to San Juan Power Plant

GAP Land Use

Map 01

- ⊙ Mile Marker
- Pipeline
- Lateral
- Meter Station

See Sheet XX for Land Use Codes / Descriptions



Date: Aug 27, 2010



Via Verde
Pipeline Project

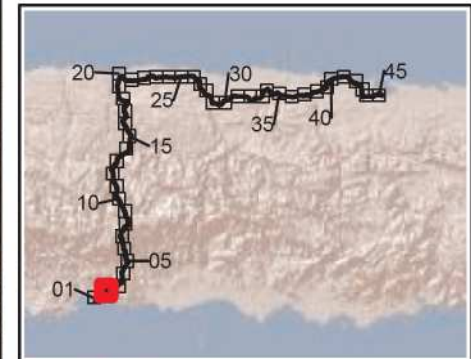
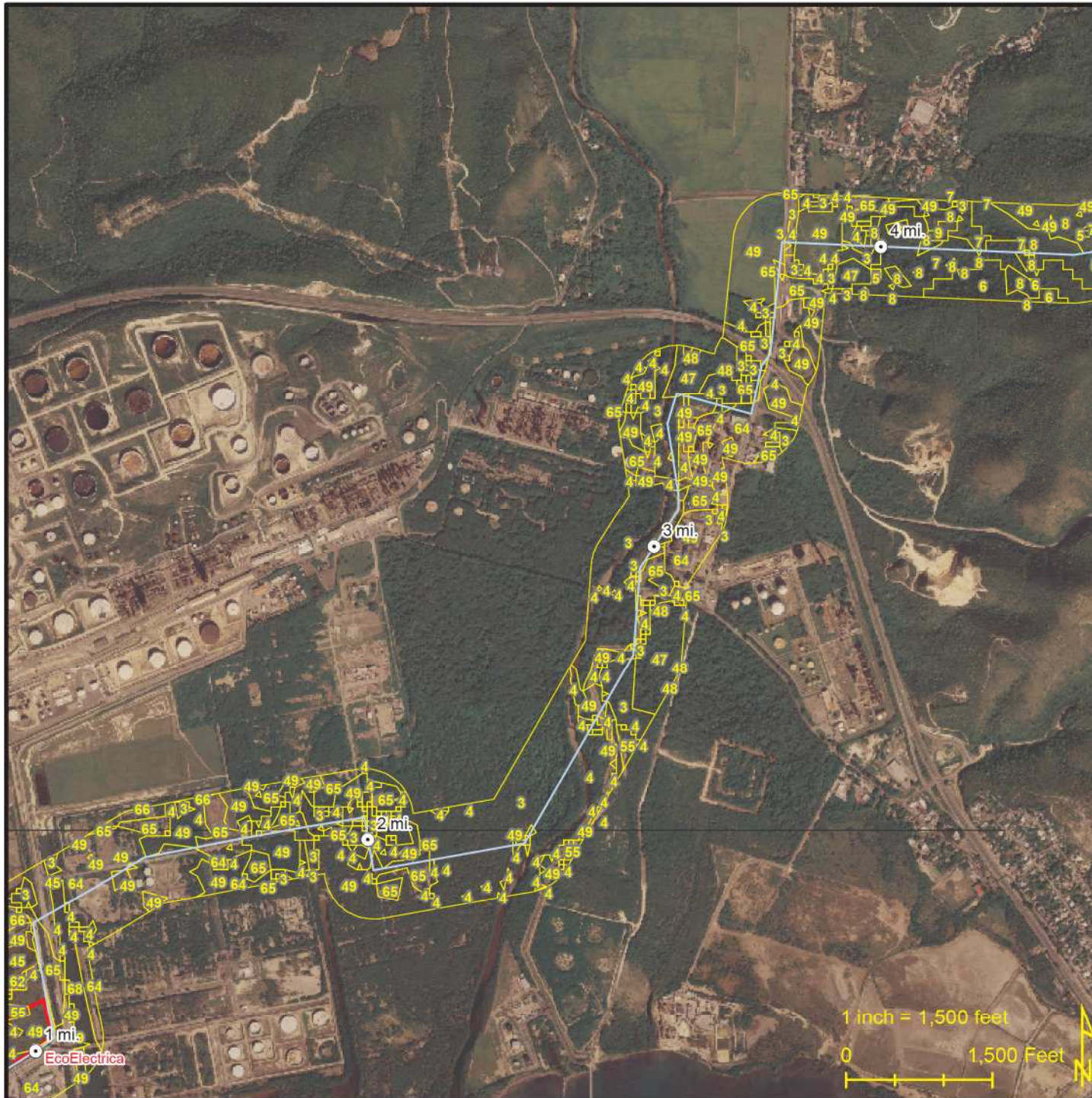
Ecoelectrica LNG Terminal to San Juan Power Plant

GAP Land Use

Map 02

- Mile Marker
- Pipeline
- Lateral
- Meter Station

See Sheet XX
for Land Use
Codes / Descriptions



BCPEABODY

Date: Aug 27, 2010



Via Verde
Pipeline Project

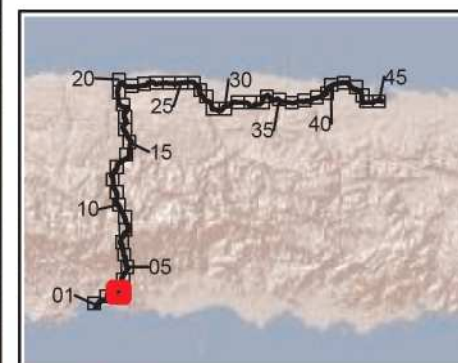
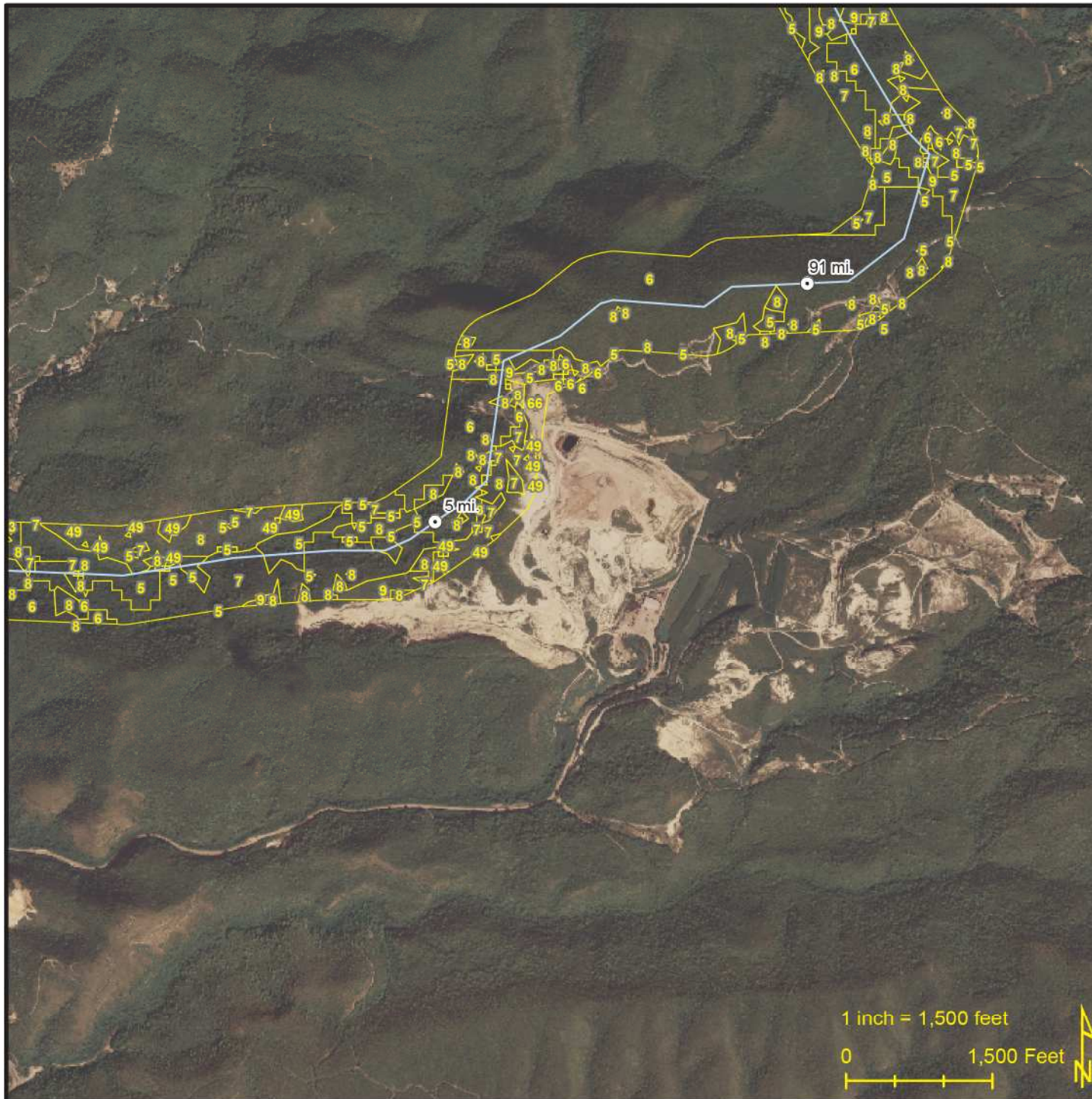
Ecoelectrica LNG Terminal to San Juan Power Plant

GAP Land Use

Map 03

- Mile Marker
- Pipeline
- Lateral
- Meter Station

See Sheet XX
for Land Use
Codes / Descriptions



Date: Aug 27, 2010



Via Verde
Pipeline Project

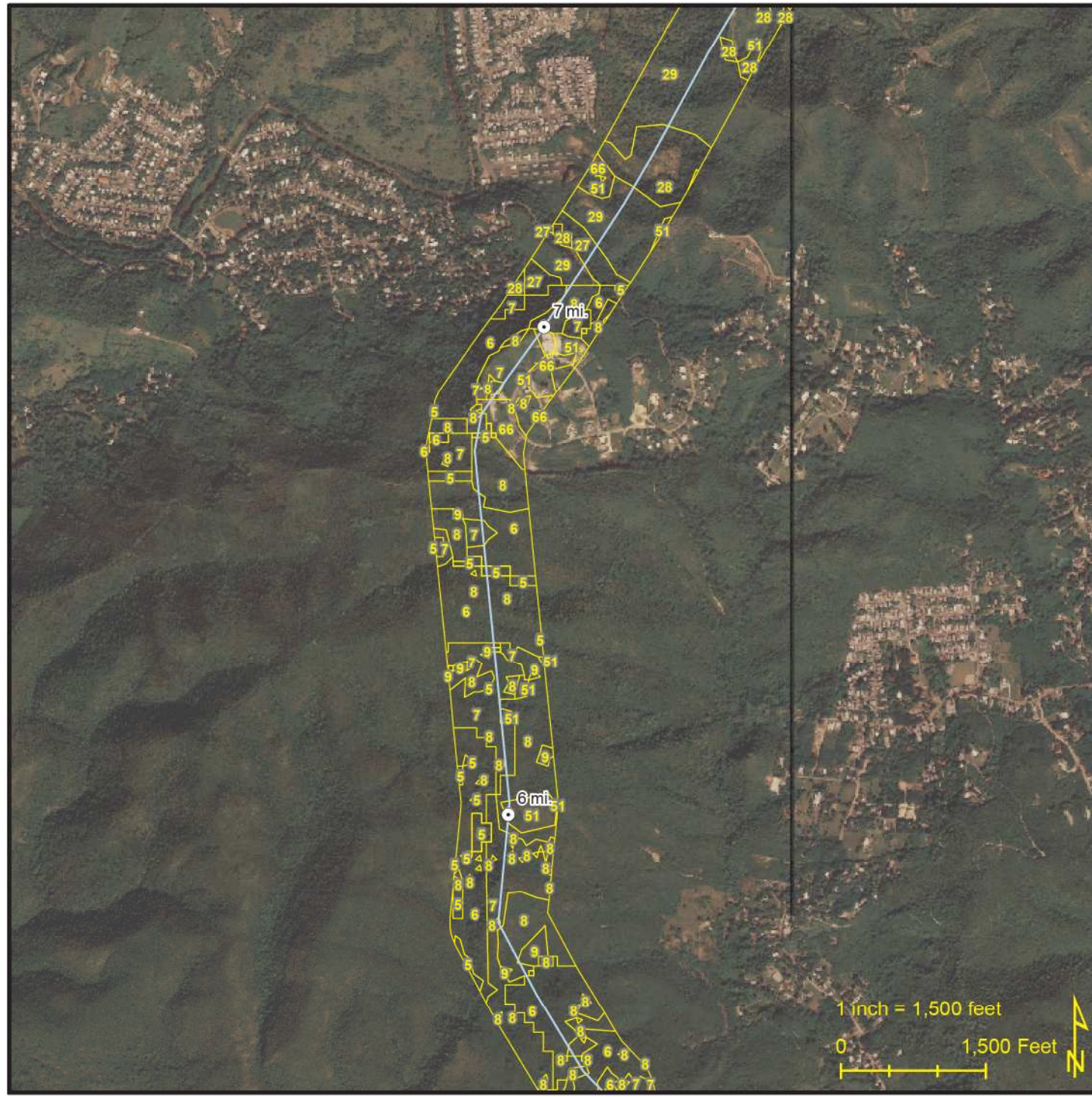
Ecoelectrica LNG Terminal to San Juan Power Plant

GAP Land Use

Map 04

- ⊙ Mile Marker
- Pipeline
- Lateral
- Meter Station

See Sheet XX
for Land Use
Codes / Descriptions



Date: Aug 27, 2010



Via Verde
Pipeline Project

Ecoelectrica LNG Terminal to San Juan Power Plant

GAP Land Use

Map 05

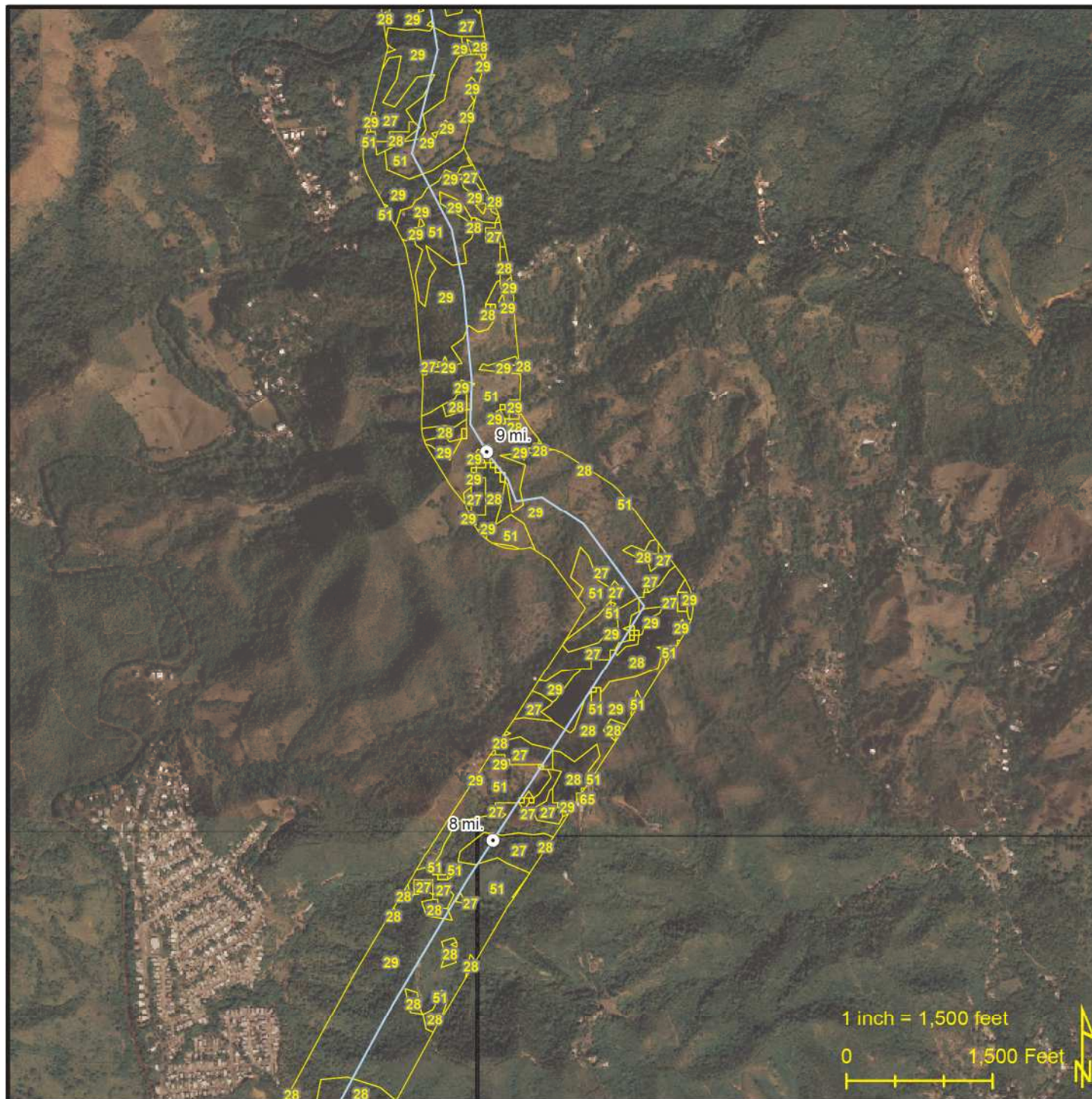
- Mile Marker
- Pipeline
- Lateral
- Meter Station

See Sheet XX
for Land Use
Codes / Descriptions



BCPEABODY

Date: Aug 27, 2010



1 inch = 1,500 feet





Via Verde
Pipeline Project

Ecoelectrica LNG Terminal to San Juan Power Plant

GAP Land Use

Map 06

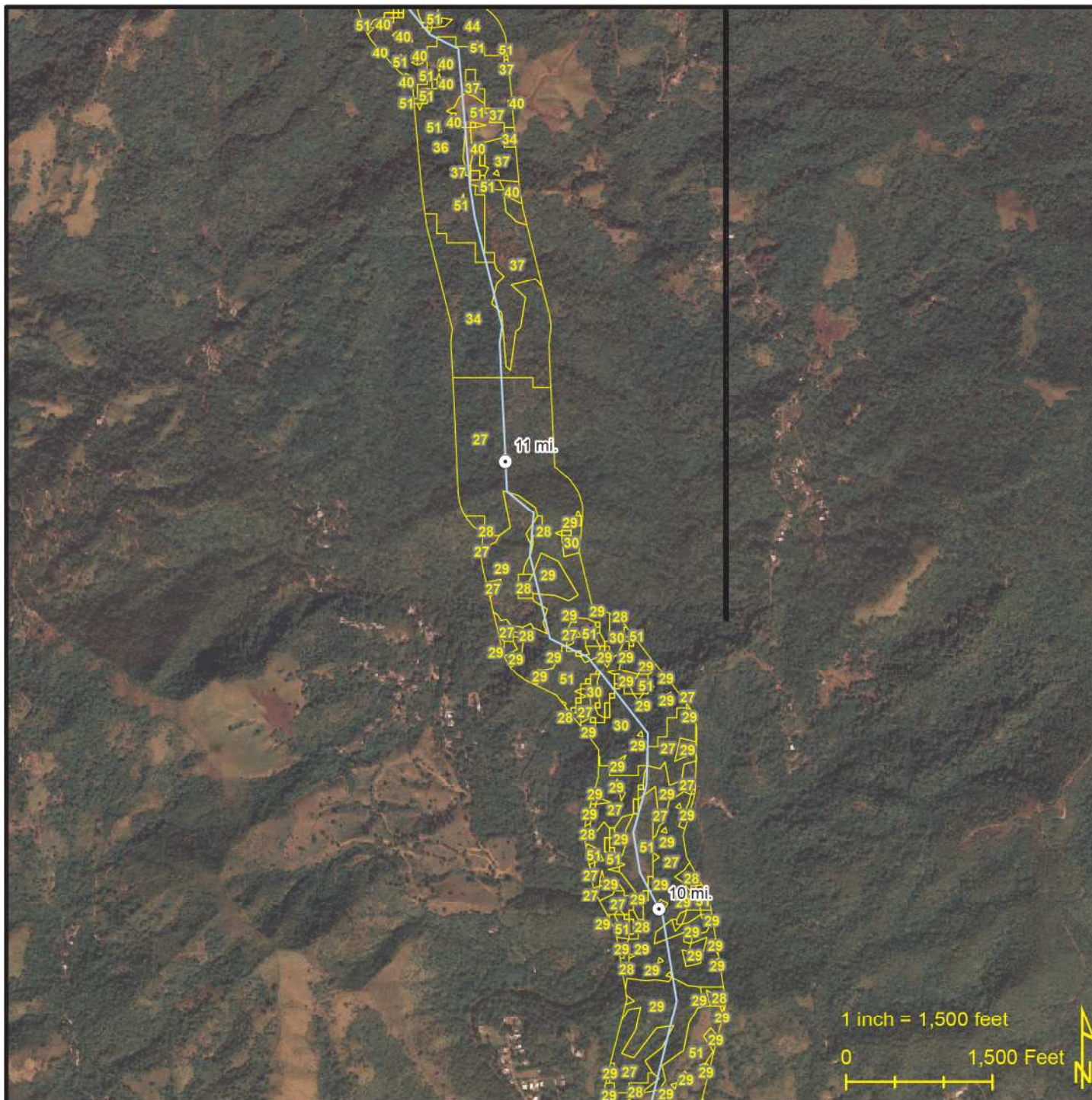
- Mile Marker
- Pipeline
- Lateral
- Meter Station

See Sheet XX
for Land Use
Codes / Descriptions



BCPEABODY

Date: Aug 27, 2010



1 inch = 1,500 feet

0 1,500 Feet





Via Verde
Pipeline Project

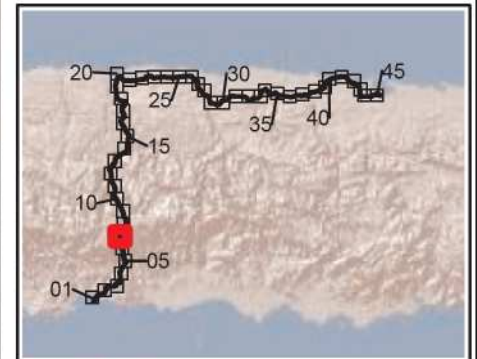
Ecoelectrica LNG Terminal
to San Juan Power Plant

GAP Land Use

Map 07

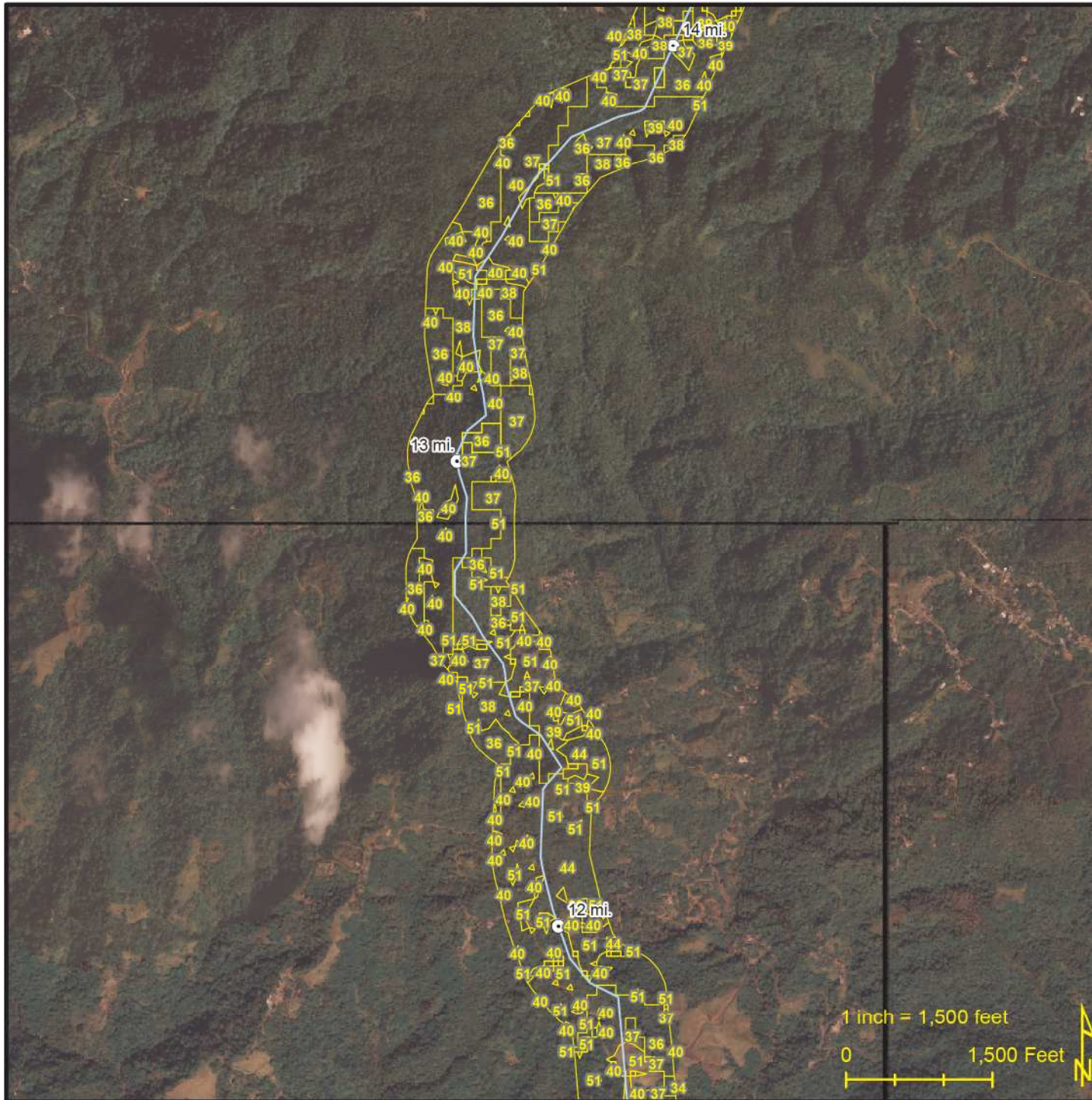
- Mile Marker
- Pipeline
- Lateral
- Meter Station

See Sheet XX
for Land Use
Codes / Descriptions



BCPEABODY

Date: Aug 27, 2010



1 inch = 1,500 feet





Via Verde
Pipeline Project

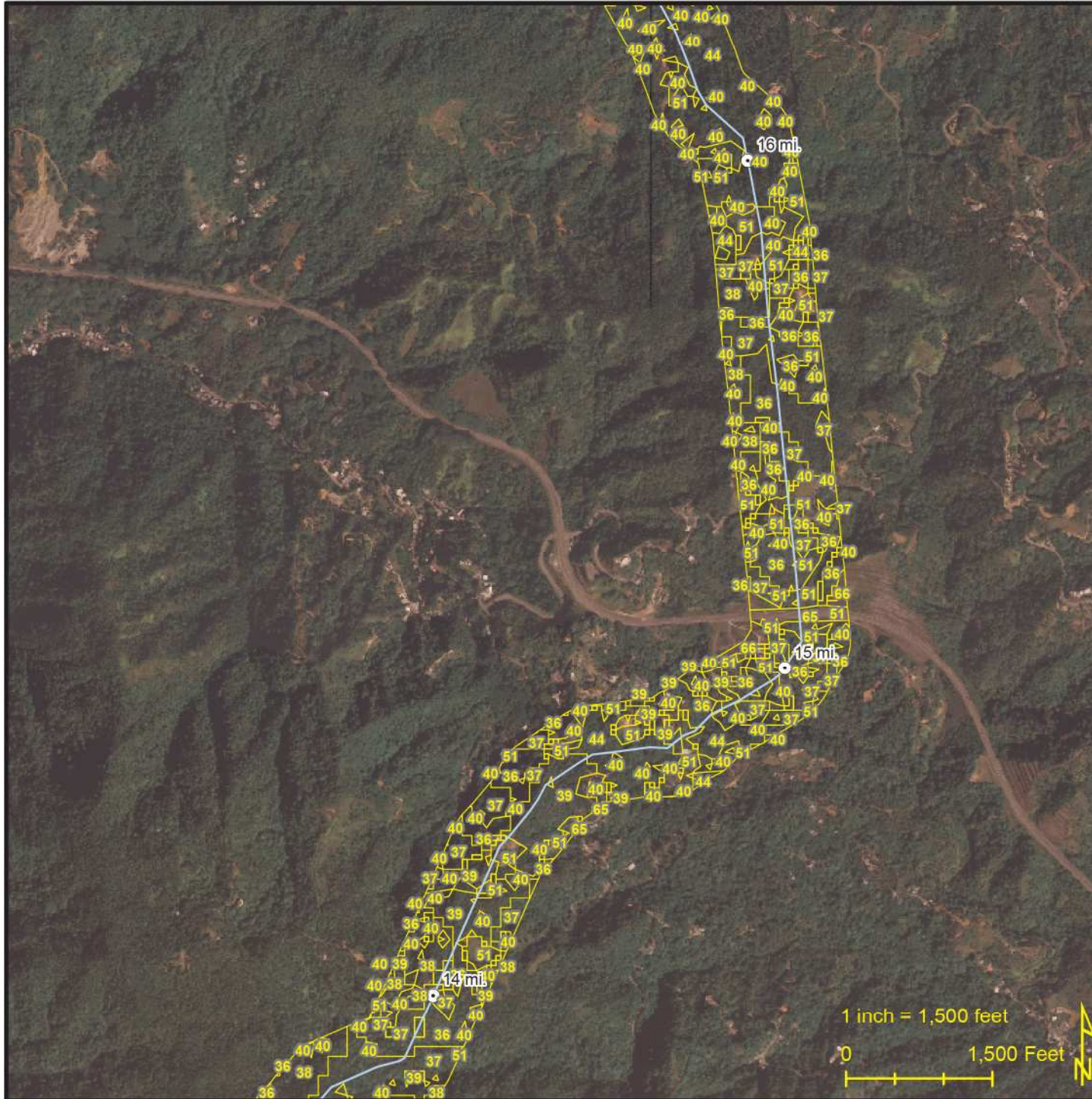
Ecoelectrica LNG Terminal
to San Juan Power Plant

GAP Land Use

Map 08

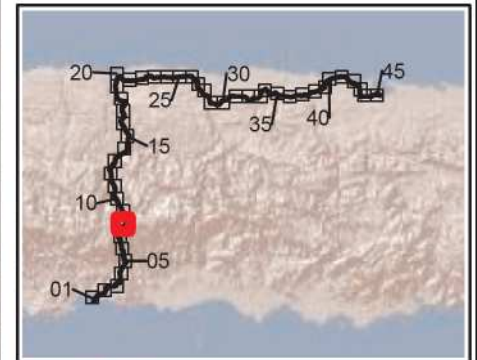
- Mile Marker
- Pipeline
- Lateral
- Meter Station

See Sheet XX
for Land Use
Codes / Descriptions



1 inch = 1,500 feet

0 1,500 Feet



BCPEABODY

Date: Aug 27, 2010



Via Verde
Pipeline Project

Ecoelectrica LNG Terminal to San Juan Power Plant

GAP Land Use

Map 09

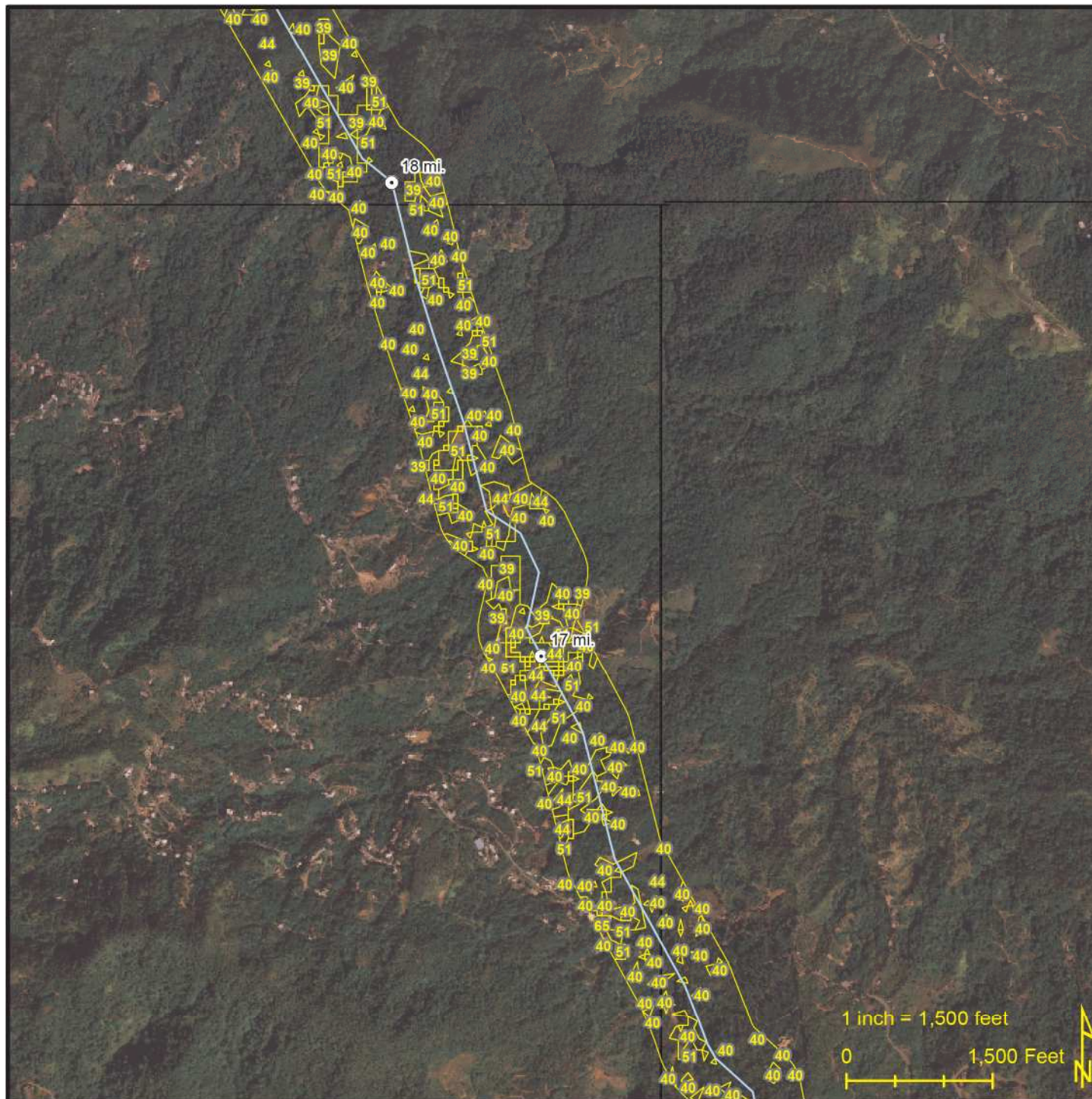
- Mile Marker
- Pipeline
- Lateral
- Meter Station

See Sheet XX
for Land Use
Codes / Descriptions



BCPEABODY

Date: Aug 27, 2010



1 inch = 1,500 feet

0 1,500 Feet





Via Verde
Pipeline Project

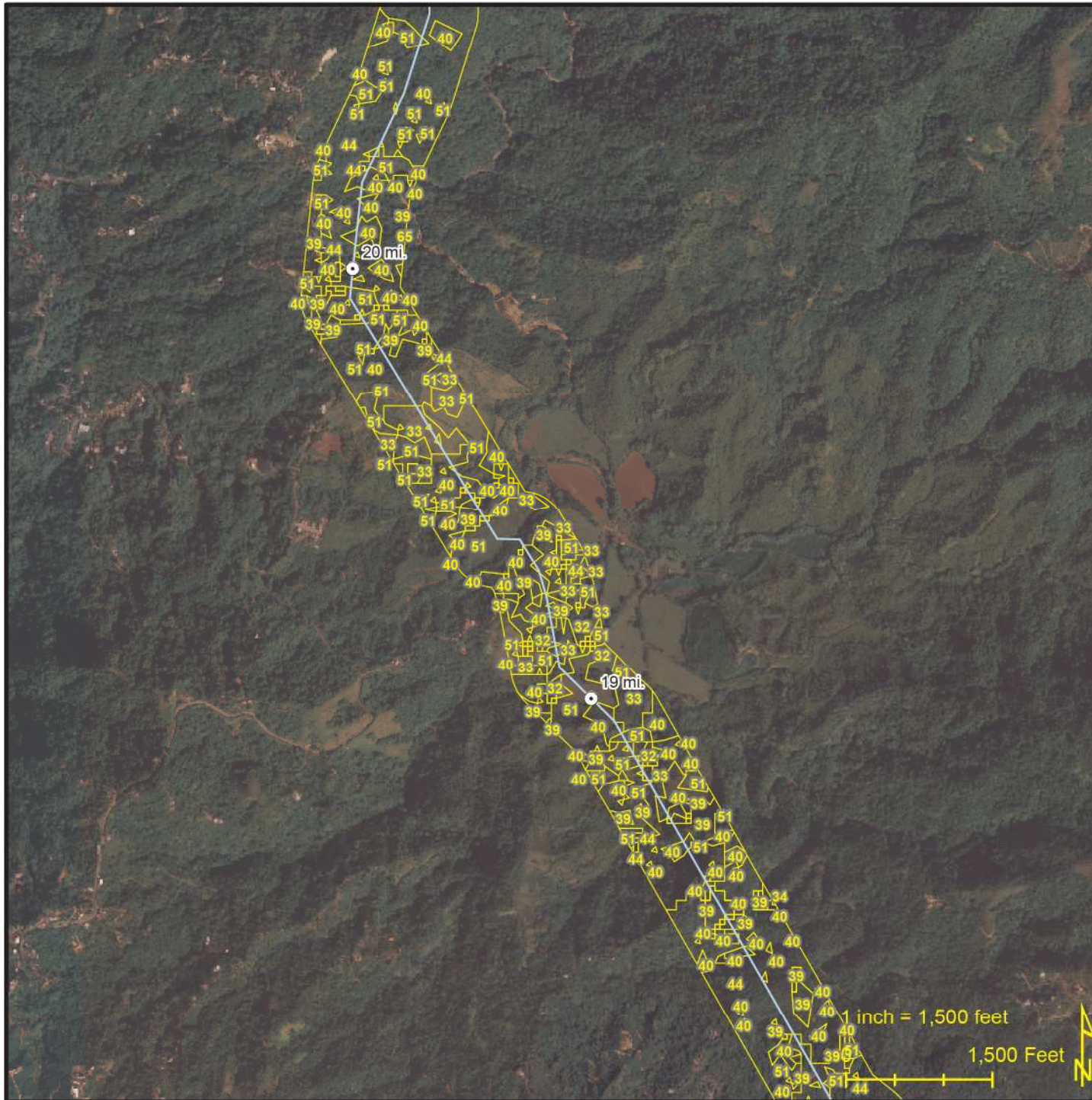
Ecoelectrica LNG Terminal to San Juan Power Plant

GAP Land Use

Map 10

- Mile Marker
- Pipeline
- Lateral
- Meter Station

See Sheet XX
for Land Use
Codes / Descriptions



BCPEABODY

Date: Aug 27, 2010



Via Verde Pipeline Project

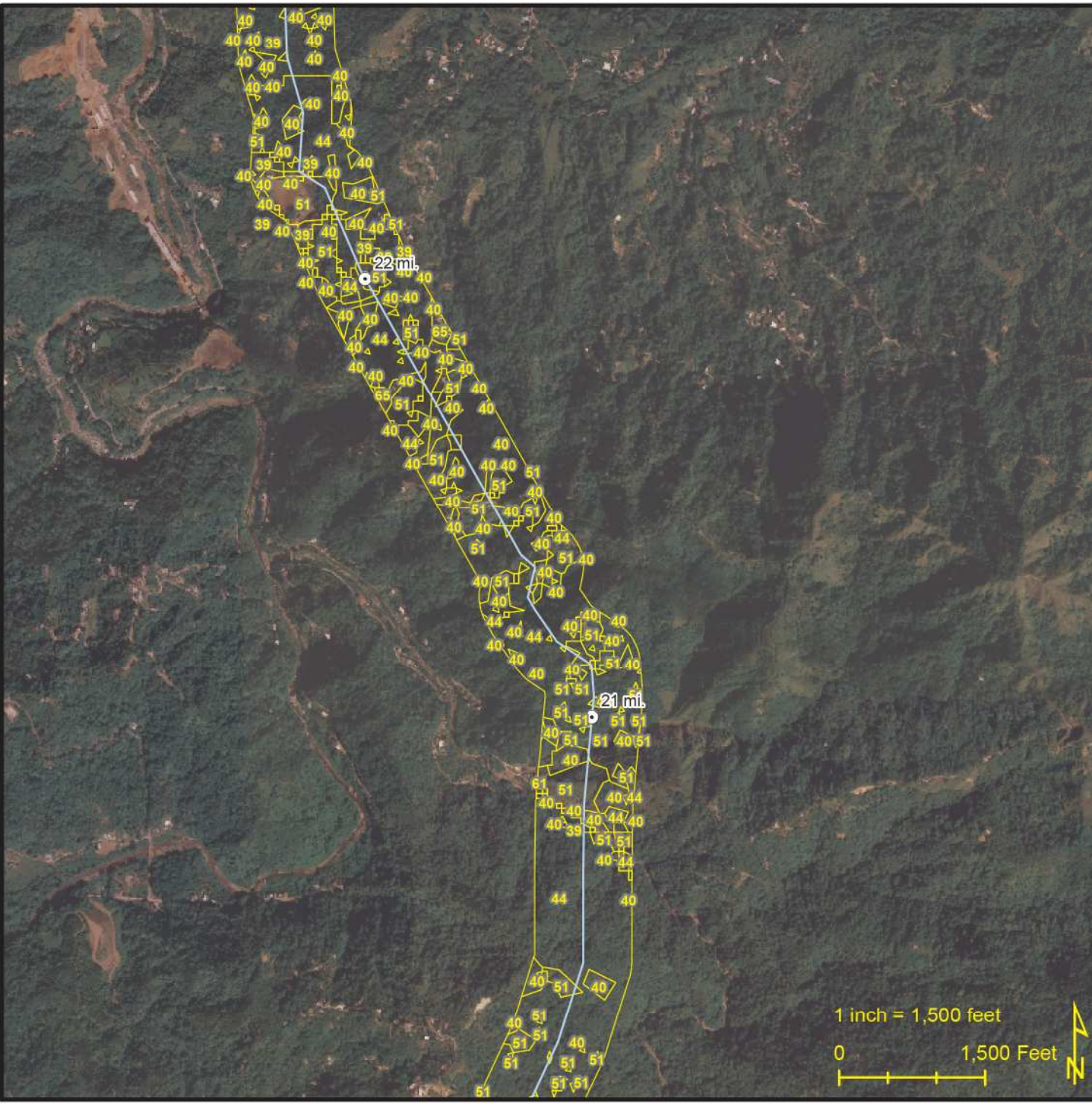
Ecoelectrica LNG Terminal to San Juan Power Plant

GAP Land Use

Map 11

- Mile Marker
- Pipeline
- Lateral
- Meter Station

See Sheet XX for Land Use Codes / Descriptions



BCPEABODY

Date: Aug 27, 2010



Via Verde
Pipeline Project

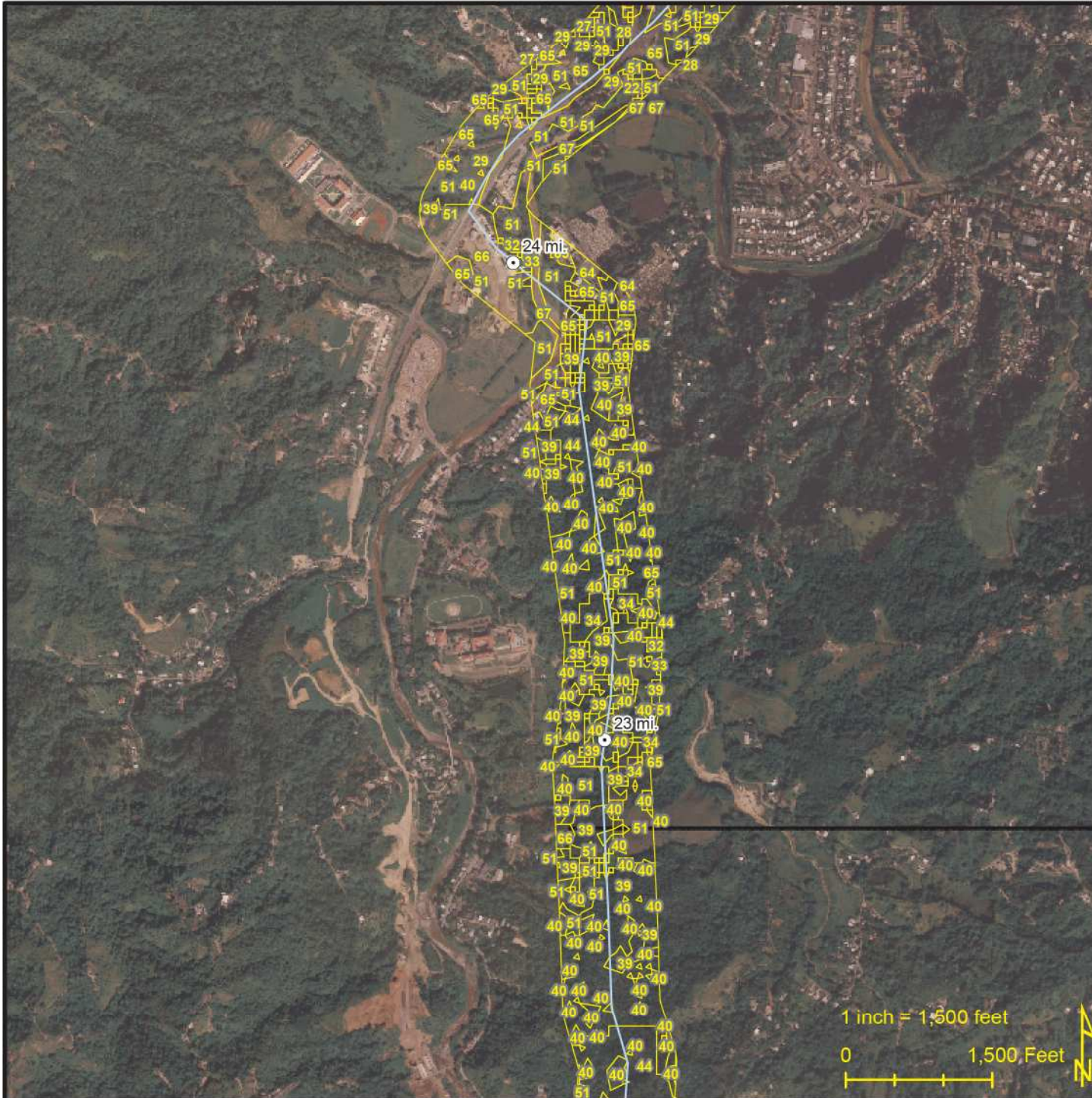
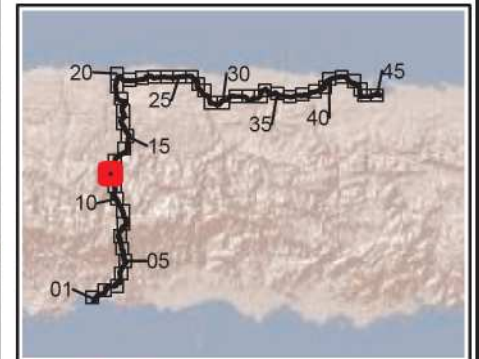
Ecoelectrica LNG Terminal to San Juan Power Plant

GAP Land Use

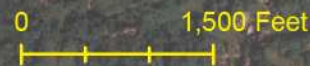
Map 12

- Mile Marker
- Pipeline
- Lateral
- Meter Station

See Sheet XX
for Land Use
Codes / Descriptions



1 inch = 1,500 feet



BCPEABODY

Date: Aug 27, 2010



Via Verde
Pipeline Project

Ecoelectrica LNG Terminal to San Juan Power Plant

GAP Land Use

Map 13

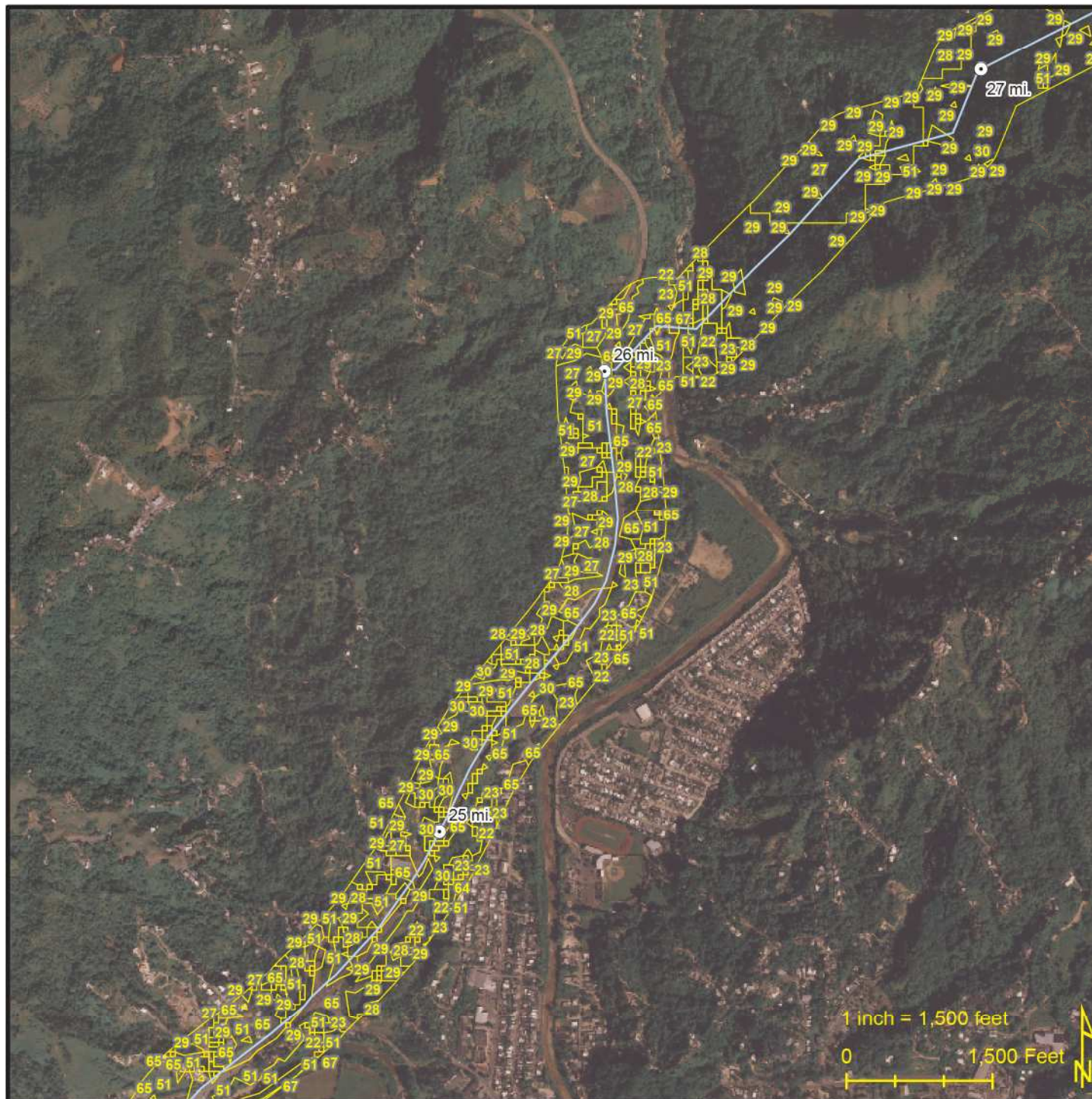
- Mile Marker
- Pipeline
- Lateral
- Meter Station

See Sheet XX
for Land Use
Codes / Descriptions



BCPEABODY

Date: Aug 27, 2010





Via Verde
Pipeline Project

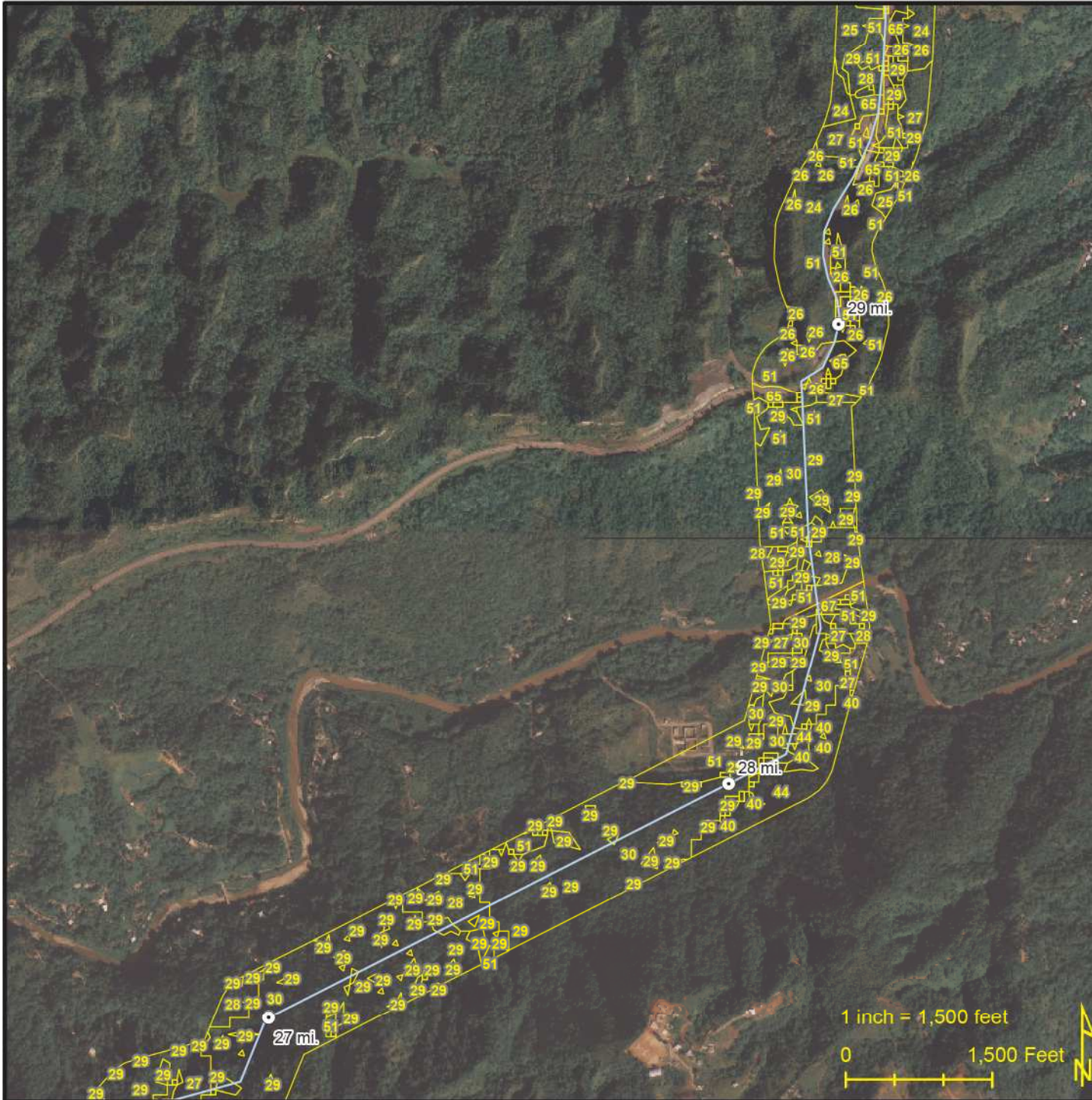
Ecoelectrica LNG Terminal to San Juan Power Plant

GAP Land Use

Map 14

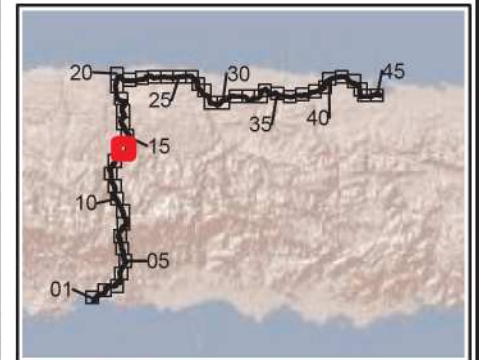
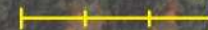
- Mile Marker
- Pipeline
- Lateral
- Meter Station

See Sheet XX
for Land Use
Codes / Descriptions



1 inch = 1,500 feet

0 1,500 Feet



BCPEABODY

Date: Aug 27, 2010



Via Verde
Pipeline Project

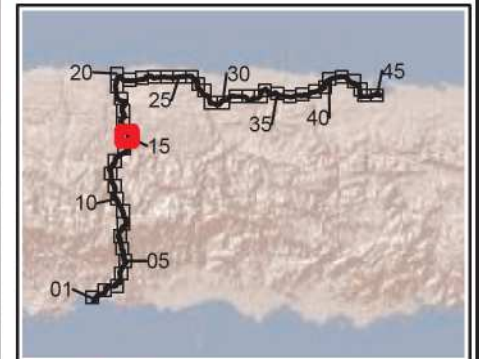
Ecoelectrica LNG Terminal
to San Juan Power Plant

GAP Land Use

Map 15

- Mile Marker
- Pipeline
- Lateral
- Meter Station

See Sheet XX
for Land Use
Codes / Descriptions



BCPEABODY

Date: Aug 27, 2010



Via Verde Pipeline Project

Ecoelectrica LNG Terminal to San Juan Power Plant

GAP Land Use

Map 16

- Mile Marker
- Pipeline
- Lateral
- Meter Station

See Sheet XX for Land Use Codes / Descriptions



BCPEABODY

Date: Aug 27, 2010



Via Verde Pipeline Project

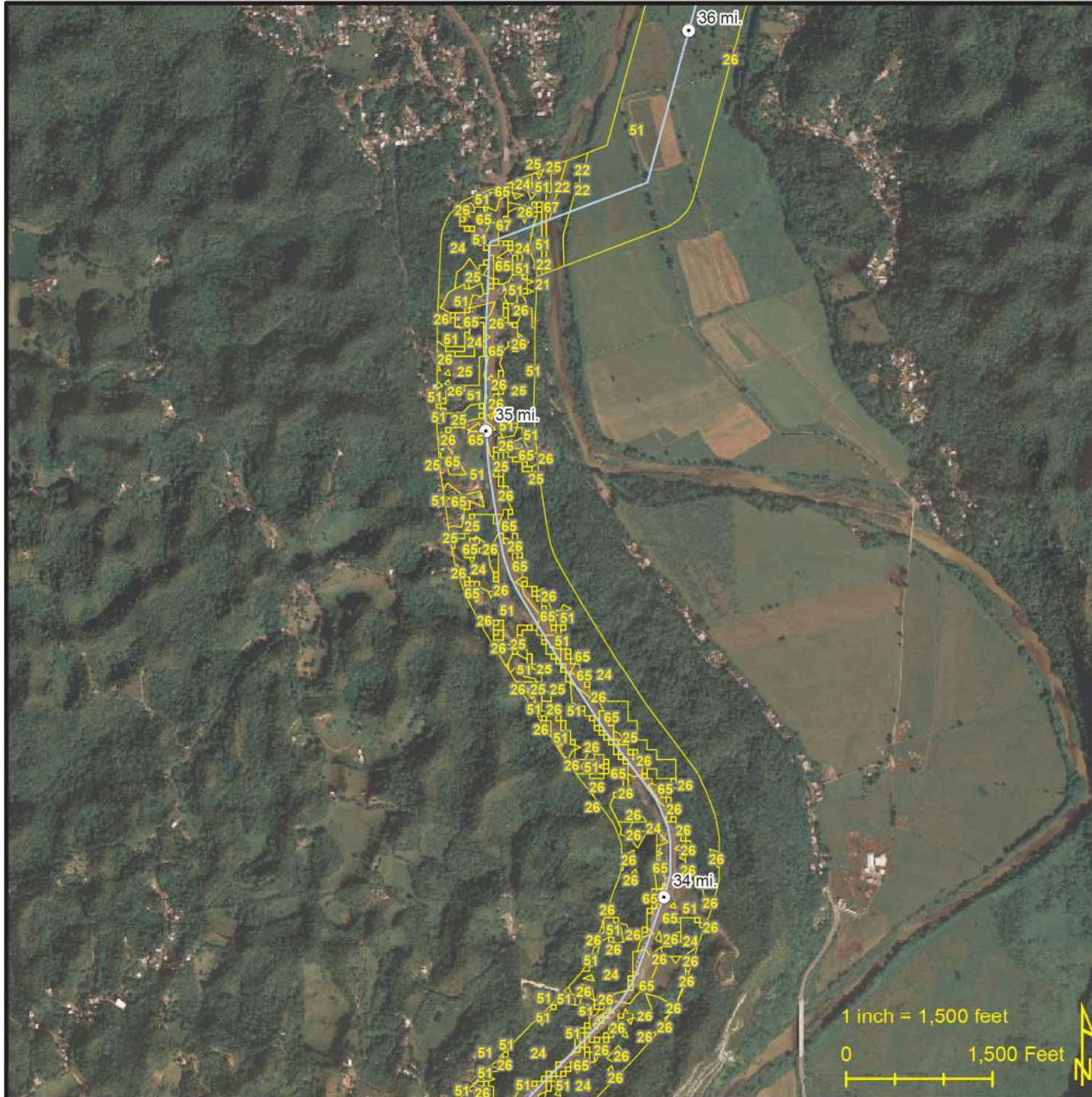
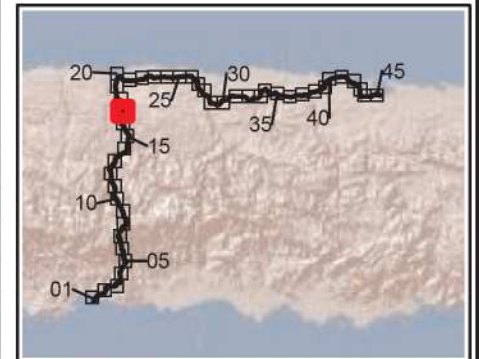
Ecoelectrica LNG Terminal to San Juan Power Plant

GAP Land Use

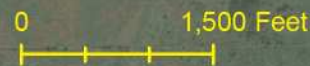
Map 17

- Mile Marker
- Pipeline
- Lateral
- Meter Station

See Sheet XX for Land Use Codes / Descriptions



1 inch = 1,500 feet



BCPEABODY

Date: Aug 27, 2010



Via Verde
Pipeline Project

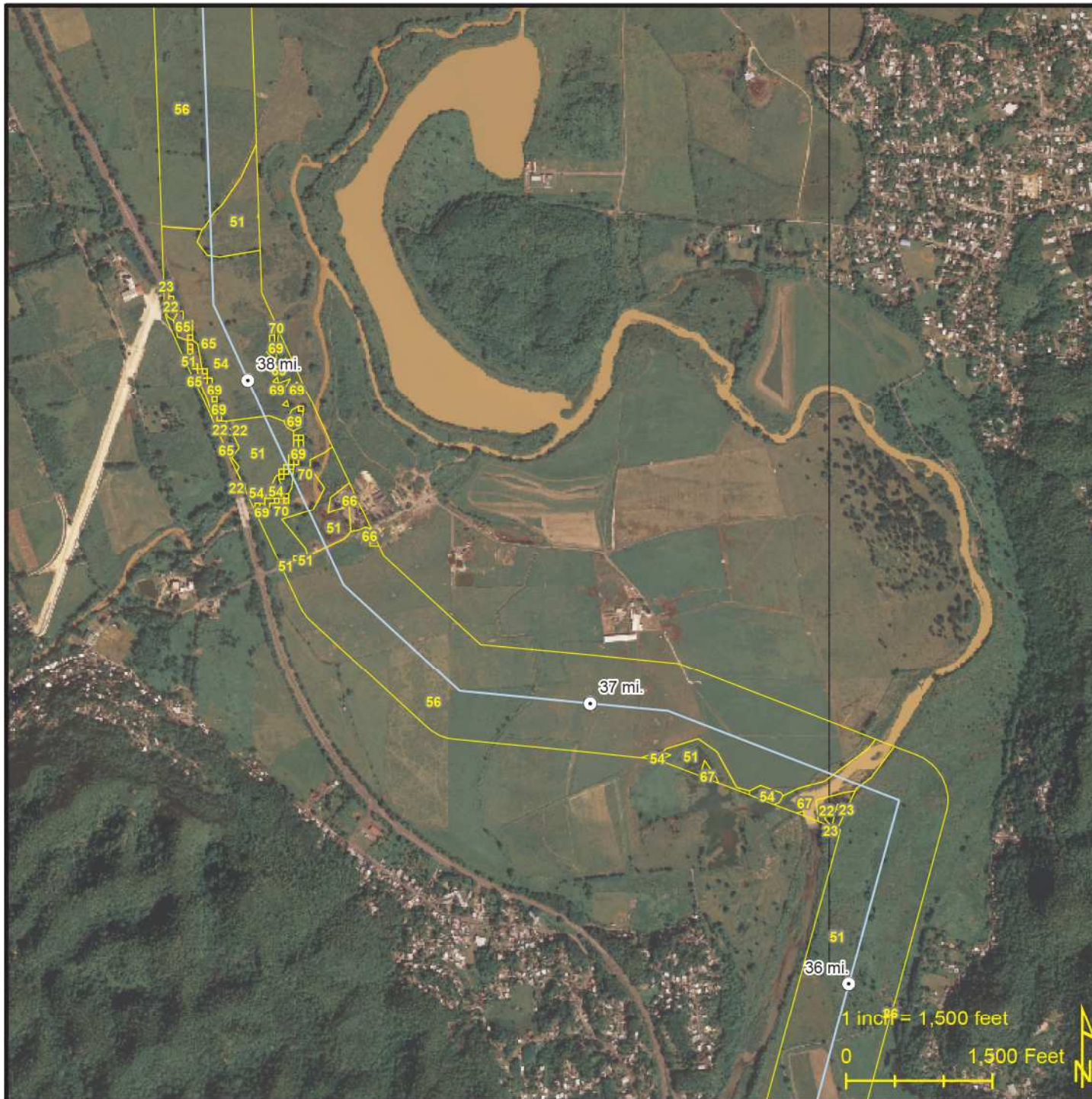
Ecoelectrica LNG Terminal to San Juan Power Plant

GAP Land Use

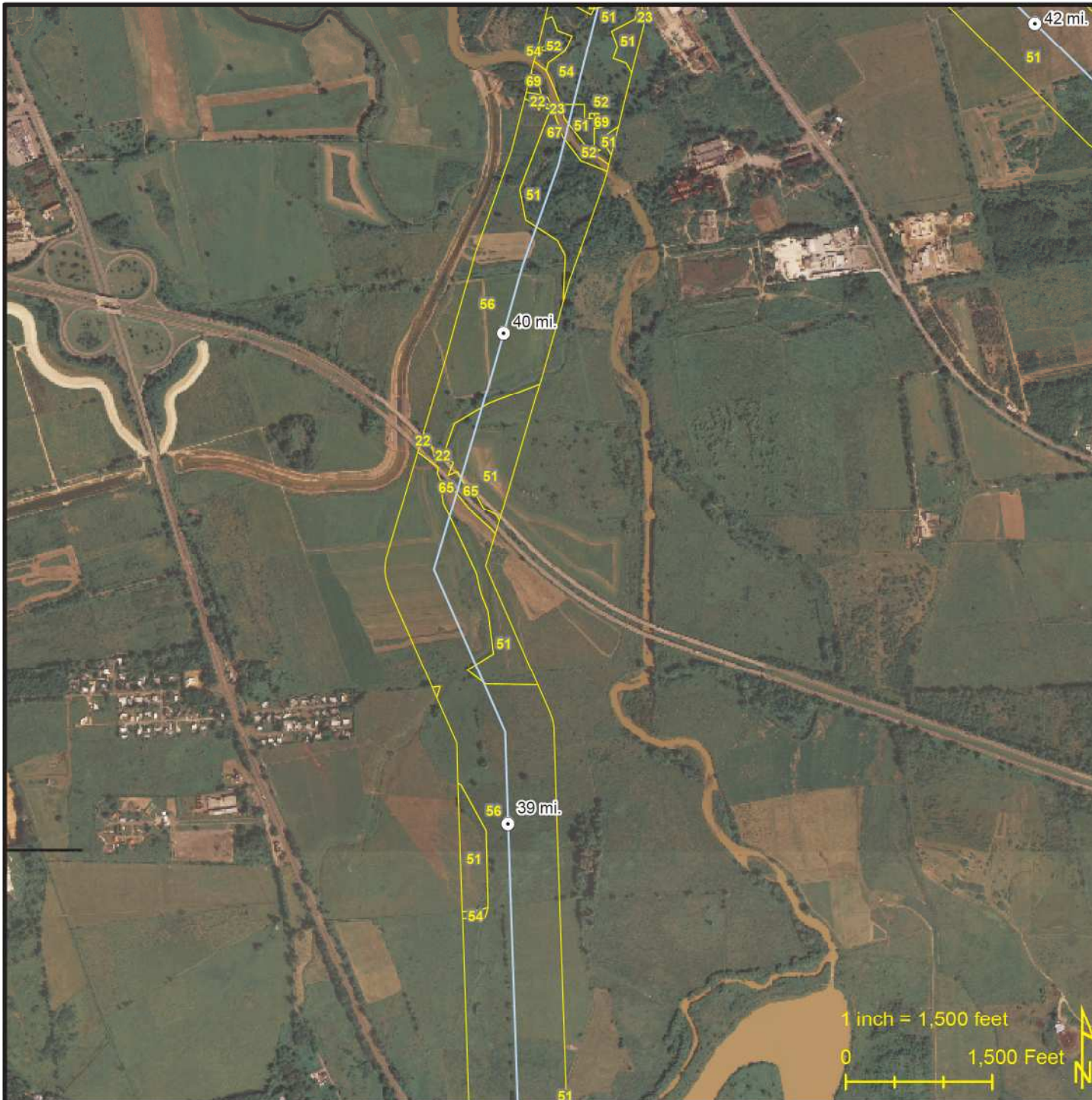
Map 18

- Mile Marker
- Pipeline
- Lateral
- Meter Station

See Sheet XX
for Land Use
Codes / Descriptions



Date: Aug 27, 2010



Via Verde
Pipeline Project

Ecoelectrica LNG Terminal
to San Juan Power Plant

GAP Land Use

Map 19

- Mile Marker
- Pipeline
- - - Lateral
- Meter Station

See Sheet XX
for Land Use
Codes / Descriptions



BCPEABODY

Date: Aug 27, 2010



Via Verde
Pipeline Project

Ecoelectrica LNG Terminal to San Juan Power Plant

GAP Land Use

Map 20

- Mile Marker
- Pipeline
- Lateral
- Meter Station

See Sheet XX
for Land Use
Codes / Descriptions



BCPEABODY

Date: Aug 27, 2010



Via Verde
Pipeline Project

Ecoelectrica LNG Terminal
to San Juan Power Plant

GAP Land Use

Map 21

- Mile Marker
- Pipeline
- Lateral
- Meter Station

See Sheet XX
for Land Use
Codes / Descriptions



BCPEABODY

Date: Aug 27, 2010



Via Verde
Pipeline Project

Ecoelectrica LNG Terminal to San Juan Power Plant

GAP Land Use

Map 22

- Mile Marker
- Pipeline
- Lateral
- Meter Station

See Sheet XX
for Land Use
Codes / Descriptions



Date: Aug 27, 2010



Via Verde Pipeline Project

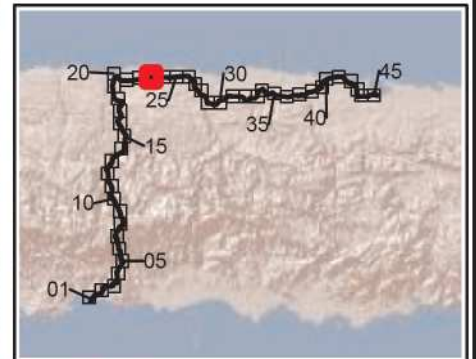
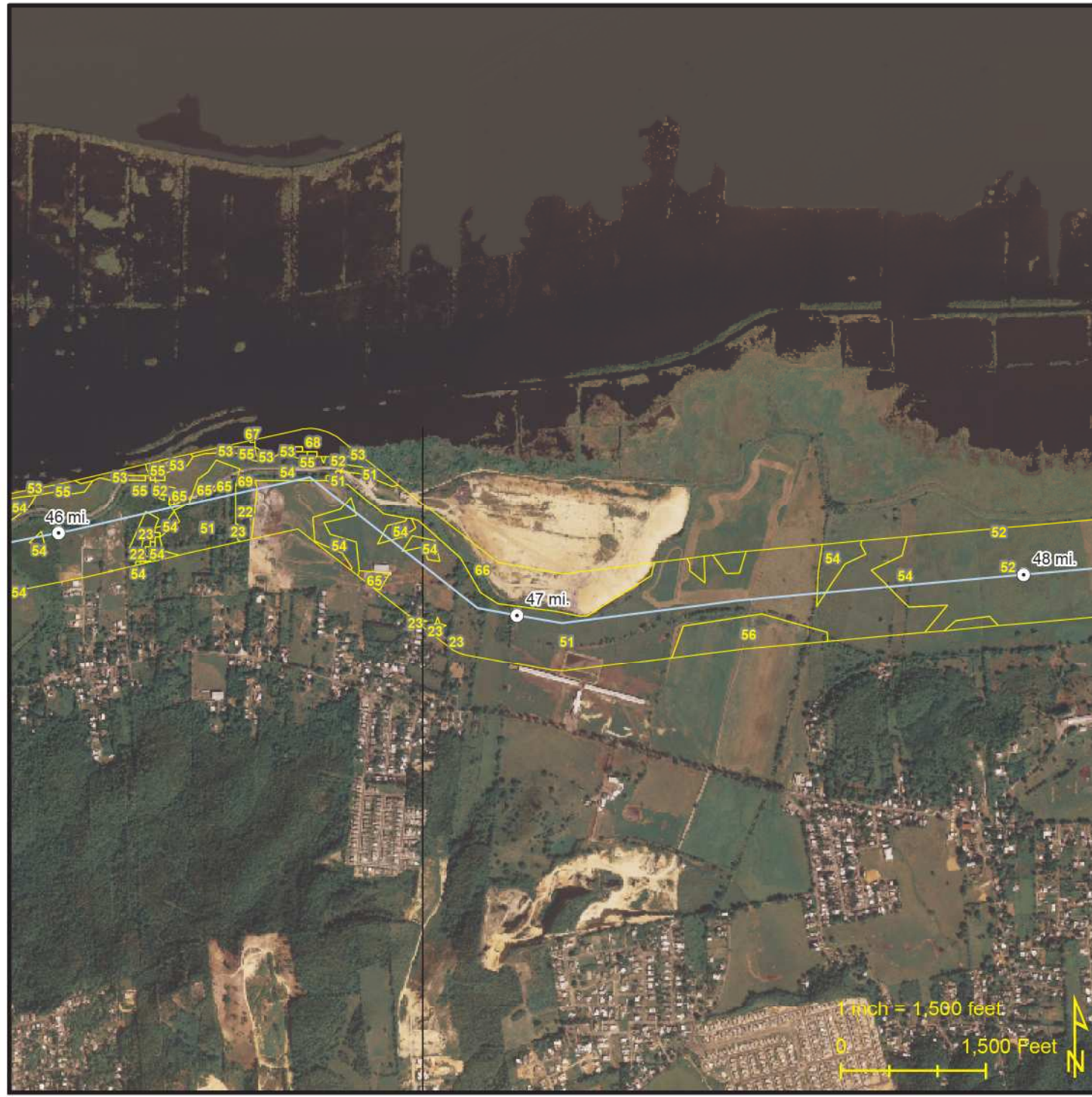
Ecoelectrica LNG Terminal to San Juan Power Plant

GAP Land Use

Map 23

- Mile Marker
- Pipeline
- Lateral
- Meter Station

See Sheet XX for Land Use Codes / Descriptions



Date: Aug 27, 2010



Via Verde
Pipeline Project

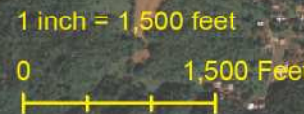
Ecoelectrica LNG Terminal
to San Juan Power Plant

GAP Land Use

Map 24

- Mile Marker
- Pipeline
- Lateral
- Meter Station

See Sheet XX
for Land Use
Codes / Descriptions



Date: Aug 27, 2010



Via Verde
Pipeline Project

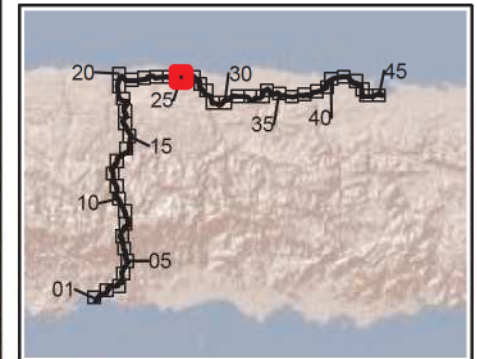
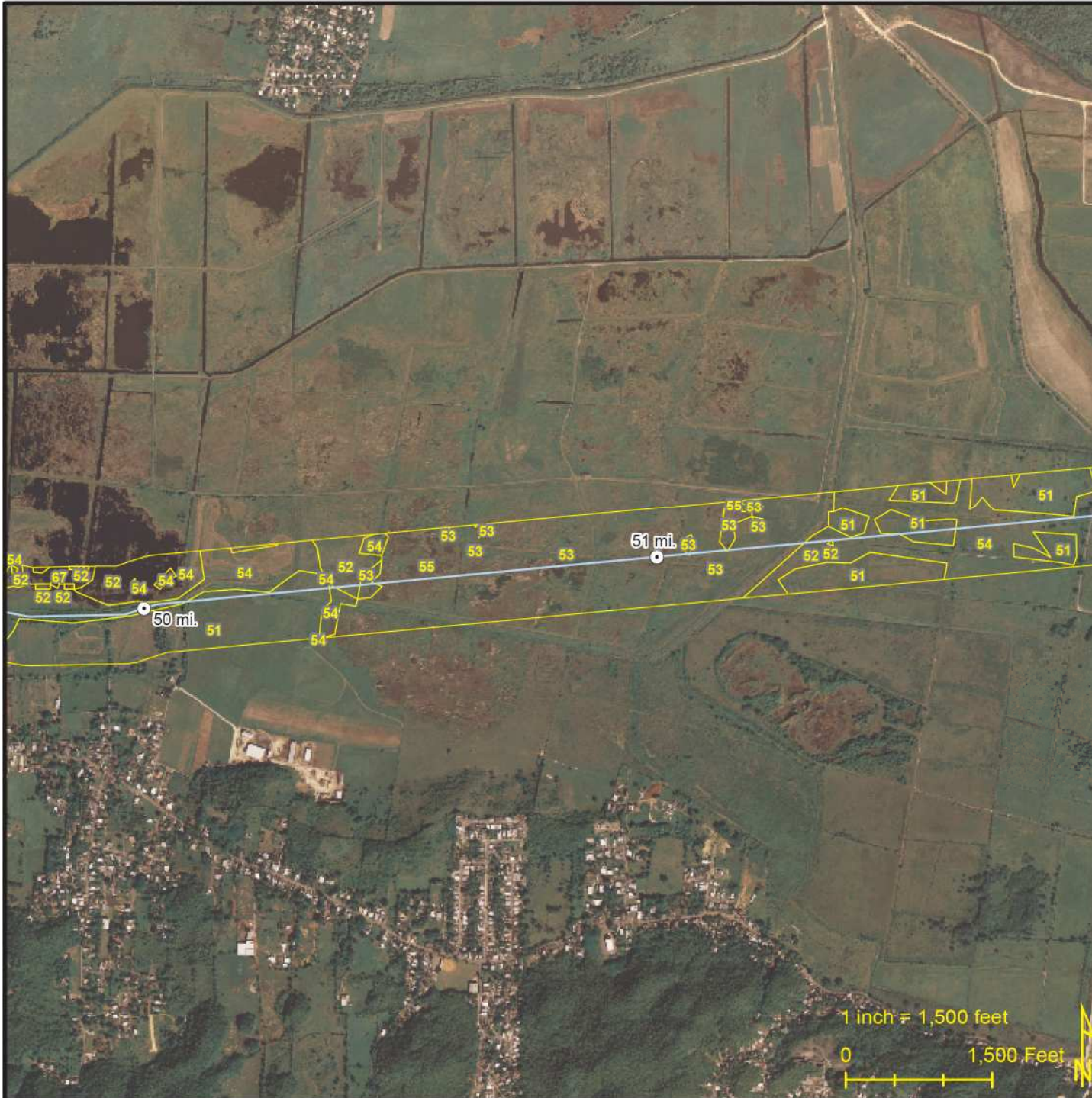
Ecoelectrica LNG Terminal
to San Juan Power Plant

GAP Land Use

Map 25

- Mile Marker
- Pipeline
- Lateral
- Meter Station

See Sheet XX
for Land Use
Codes / Descriptions



Date: Aug 27, 2010



Via Verde
Pipeline Project

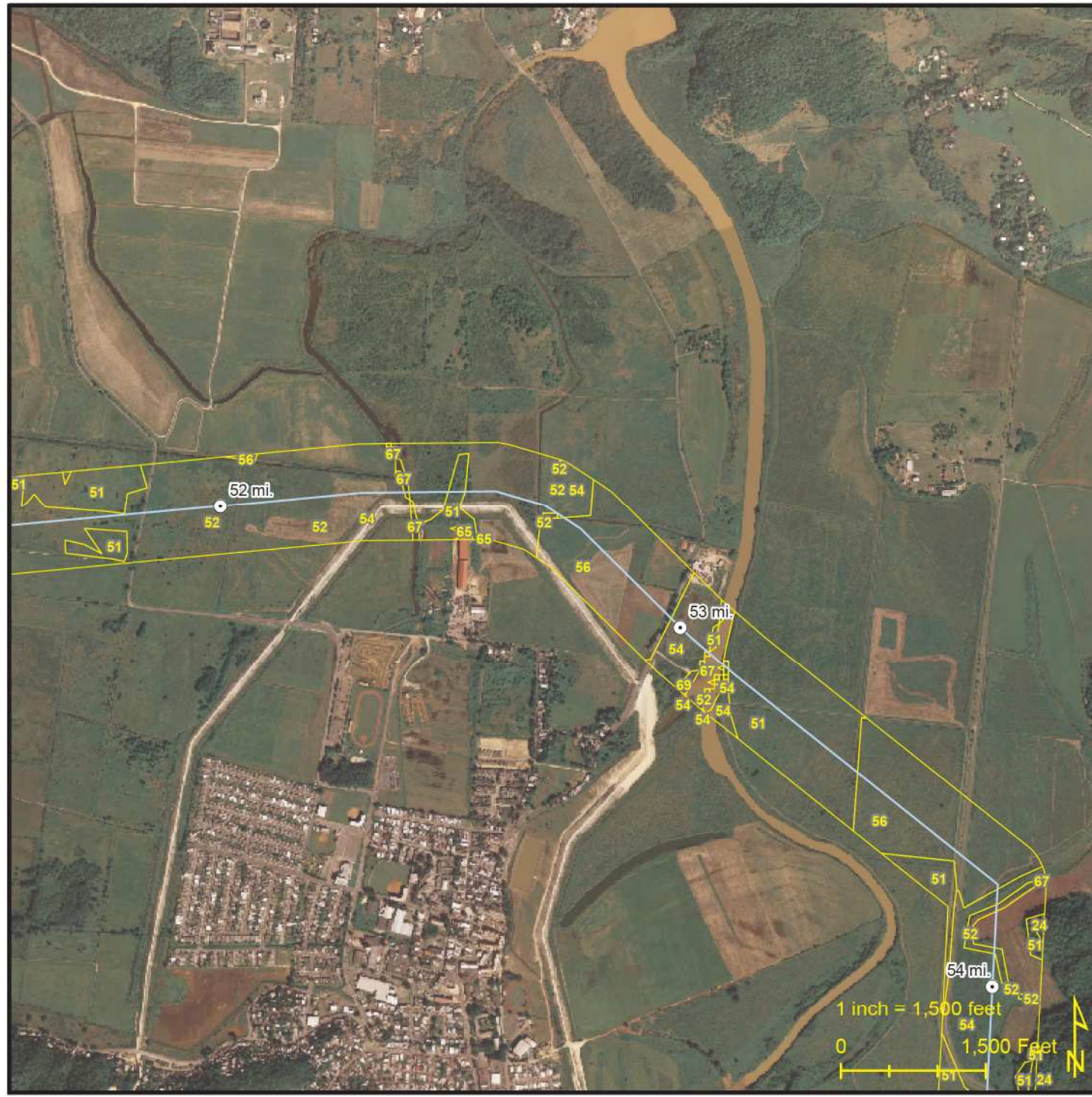
Ecoelectrica LNG Terminal
to San Juan Power Plant

GAP Land Use

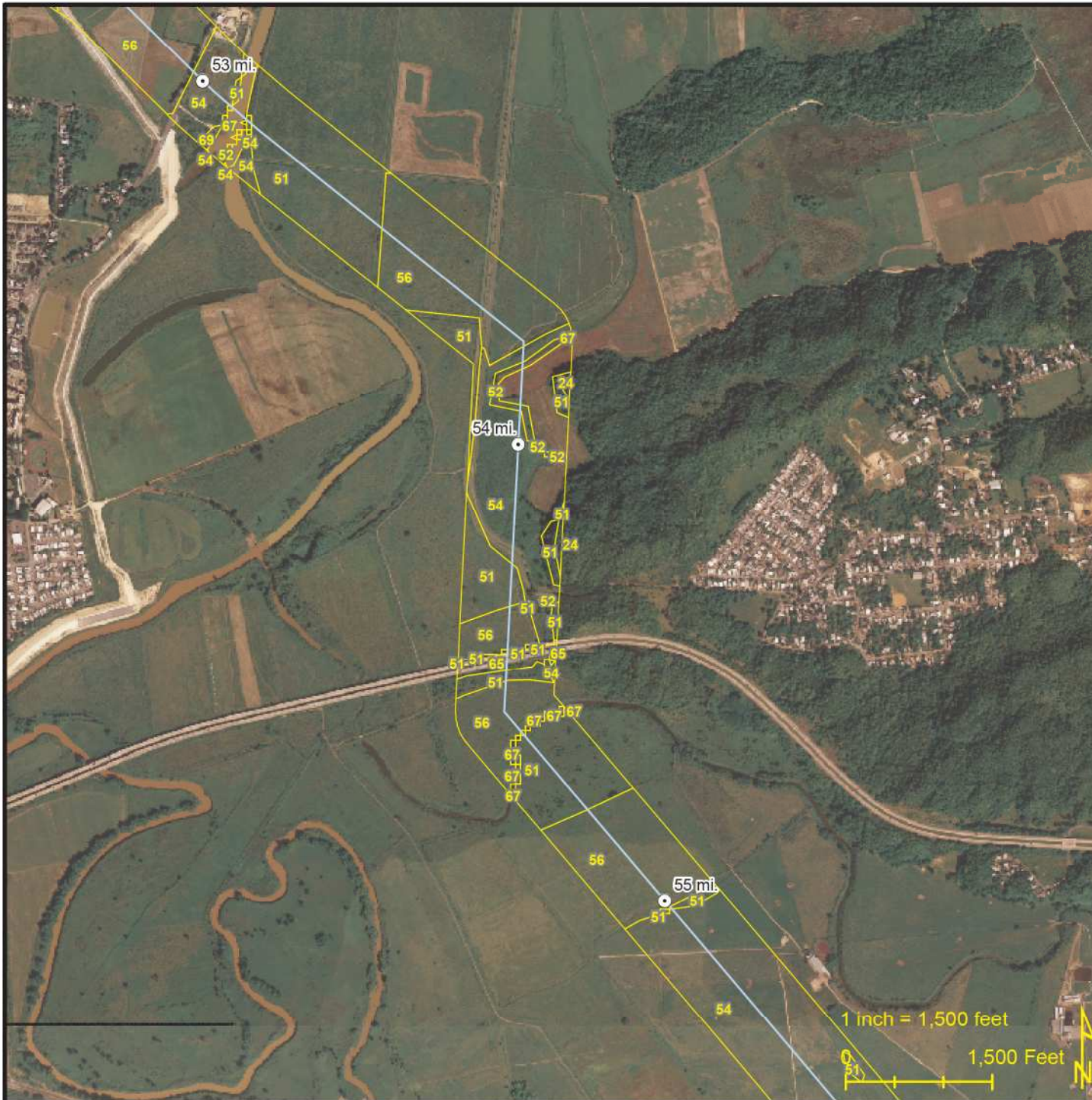
Map 26

- Mile Marker
- Pipeline
- Lateral
- Meter Station

See Sheet XX
for Land Use
Codes / Descriptions



Date: Aug 27, 2010



Via Verde
Pipeline Project

Ecoelectrica LNG Terminal
to San Juan Power Plant

GAP Land Use

Map 27

- Mile Marker
- Pipeline
- Lateral
- Meter Station

See Sheet XX
for Land Use
Codes / Descriptions



BCPEABODY

Date: Aug 27, 2010



Via Verde
Pipeline Project

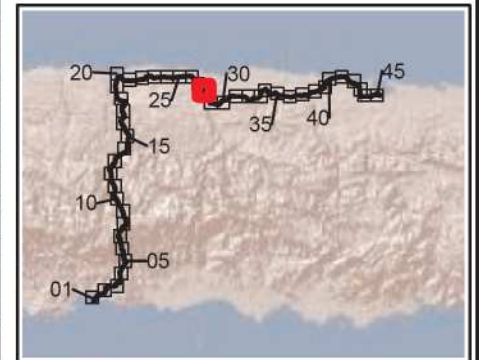
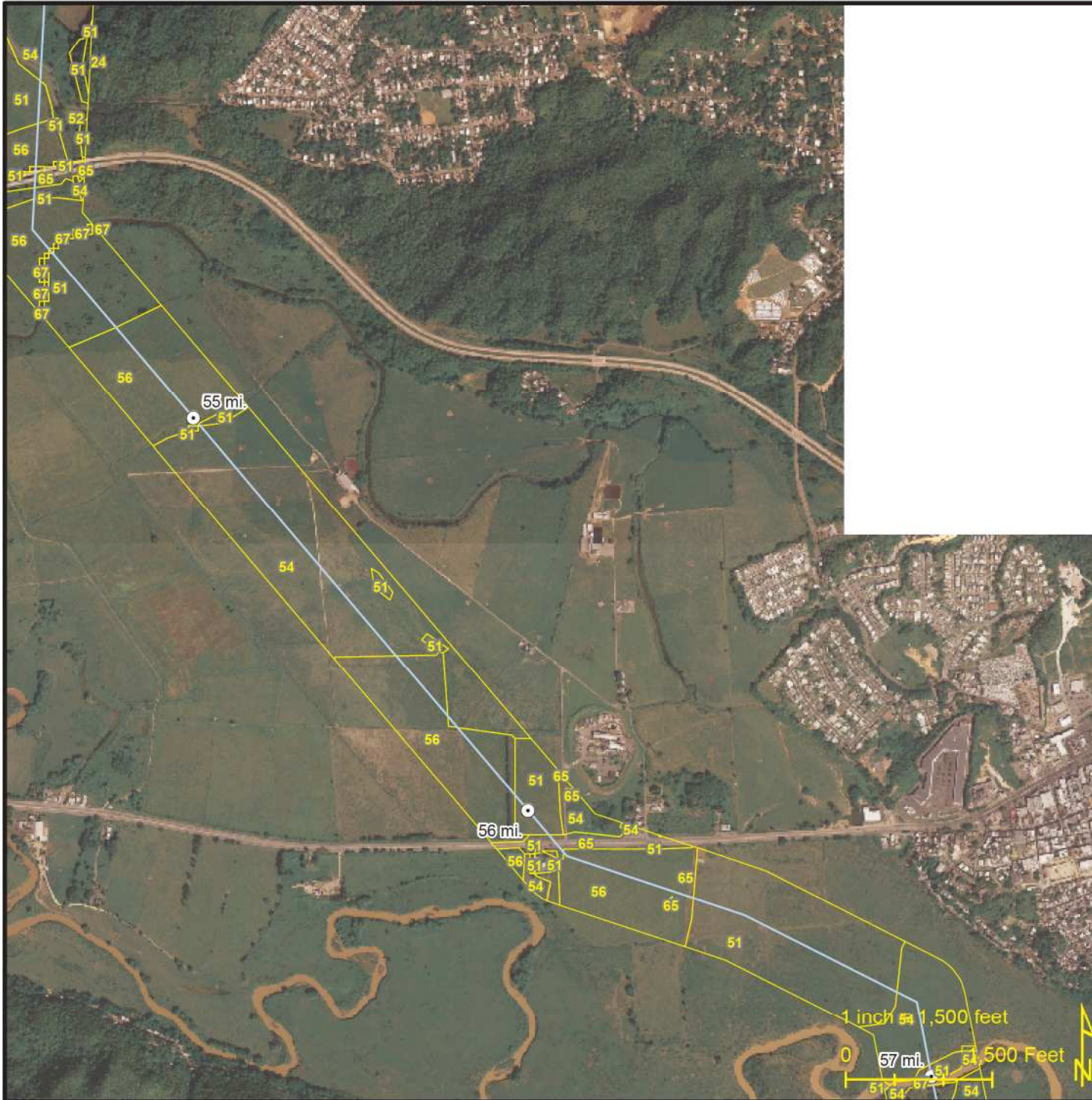
Ecoelectrica LNG Terminal to San Juan Power Plant

GAP Land Use

Map 28

- Mile Marker
- Pipeline
- Lateral
- Meter Station

See Sheet XX
for Land Use
Codes / Descriptions



BCPEABODY

Date: Aug 27, 2010



Via Verde
Pipeline Project

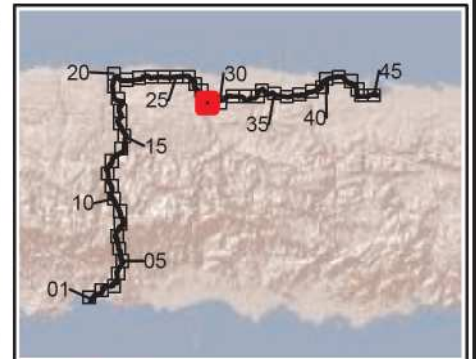
Ecoelectrica LNG Terminal to San Juan Power Plant

GAP Land Use

Map 29

- ⊙ Mile Marker
- Pipeline
- Lateral
- Meter Station

See Sheet XX
for Land Use
Codes / Descriptions



Date: Aug 27, 2010



Via Verde Pipeline Project

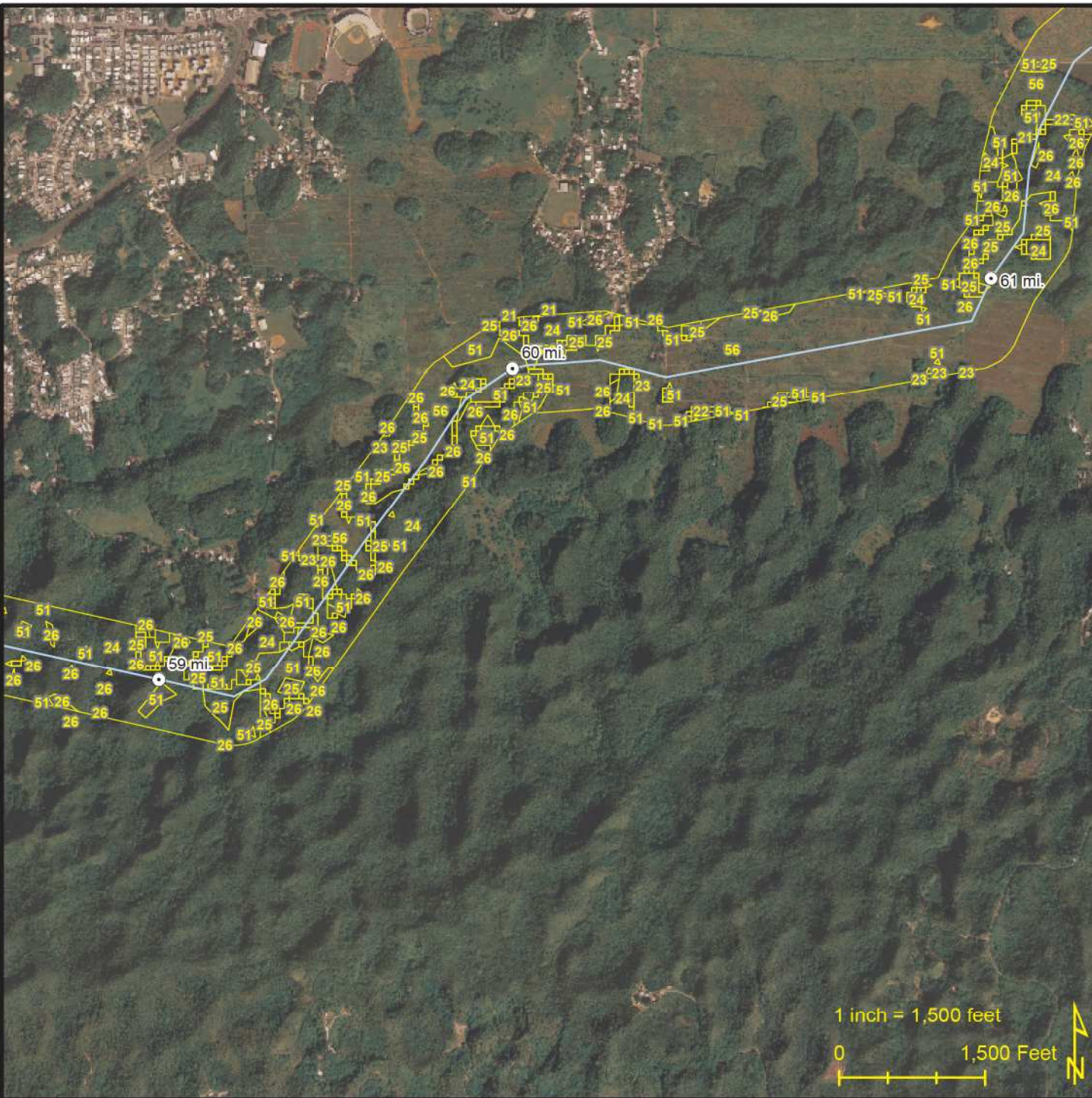
Ecoelectrica LNG Terminal to San Juan Power Plant

GAP Land Use

Map 30

- Mile Marker
- Pipeline
- Lateral
- Meter Station

See Sheet XX for Land Use Codes / Descriptions



Date: Aug 27, 2010



Via Verde
Pipeline Project

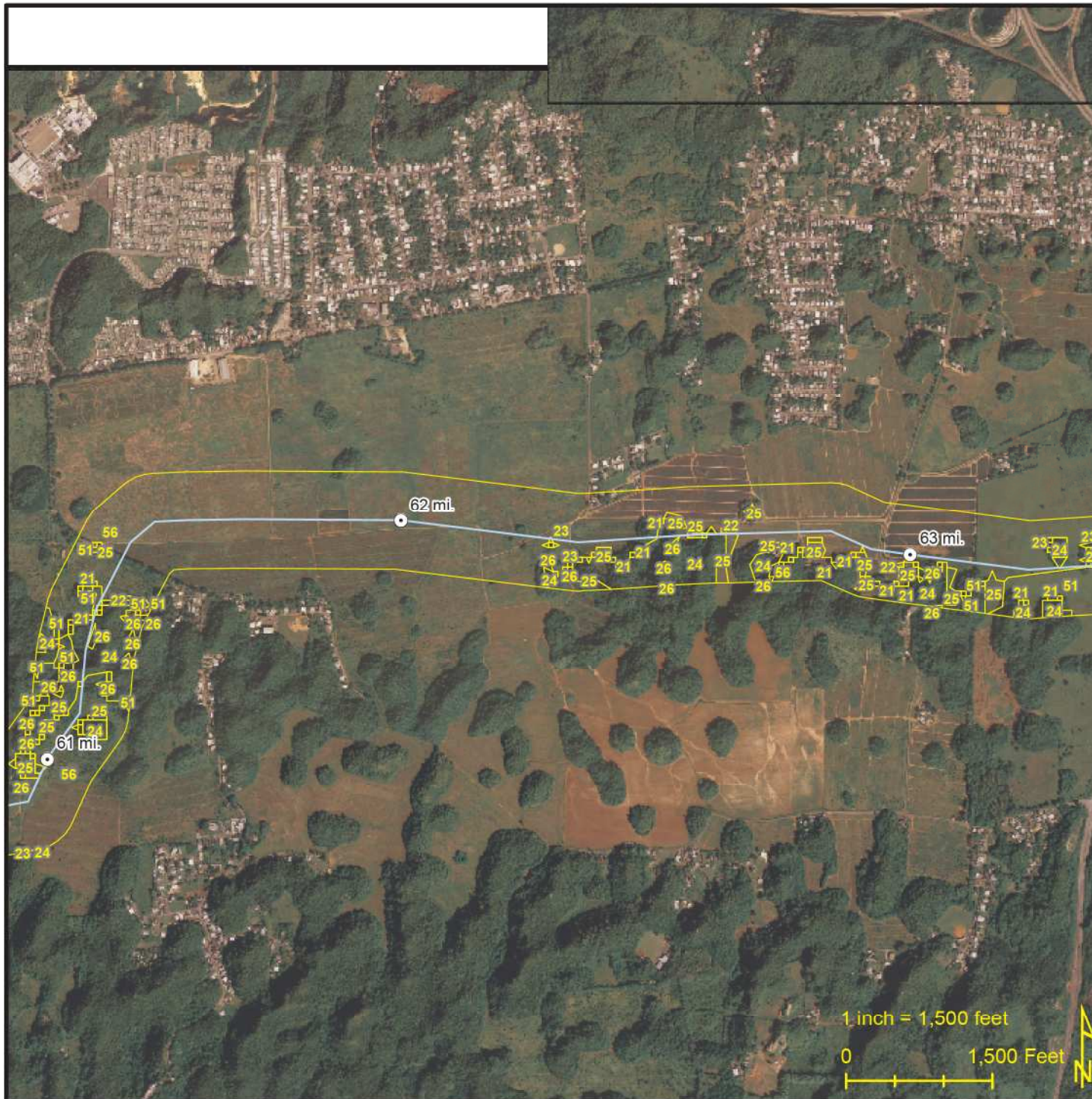
Ecoelectrica LNG Terminal to San Juan Power Plant

GAP Land Use

Map 31

- Mile Marker
- Pipeline
- Lateral
- Meter Station

See Sheet XX
for Land Use
Codes / Descriptions



Date: Aug 27, 2010



Via Verde
Pipeline Project

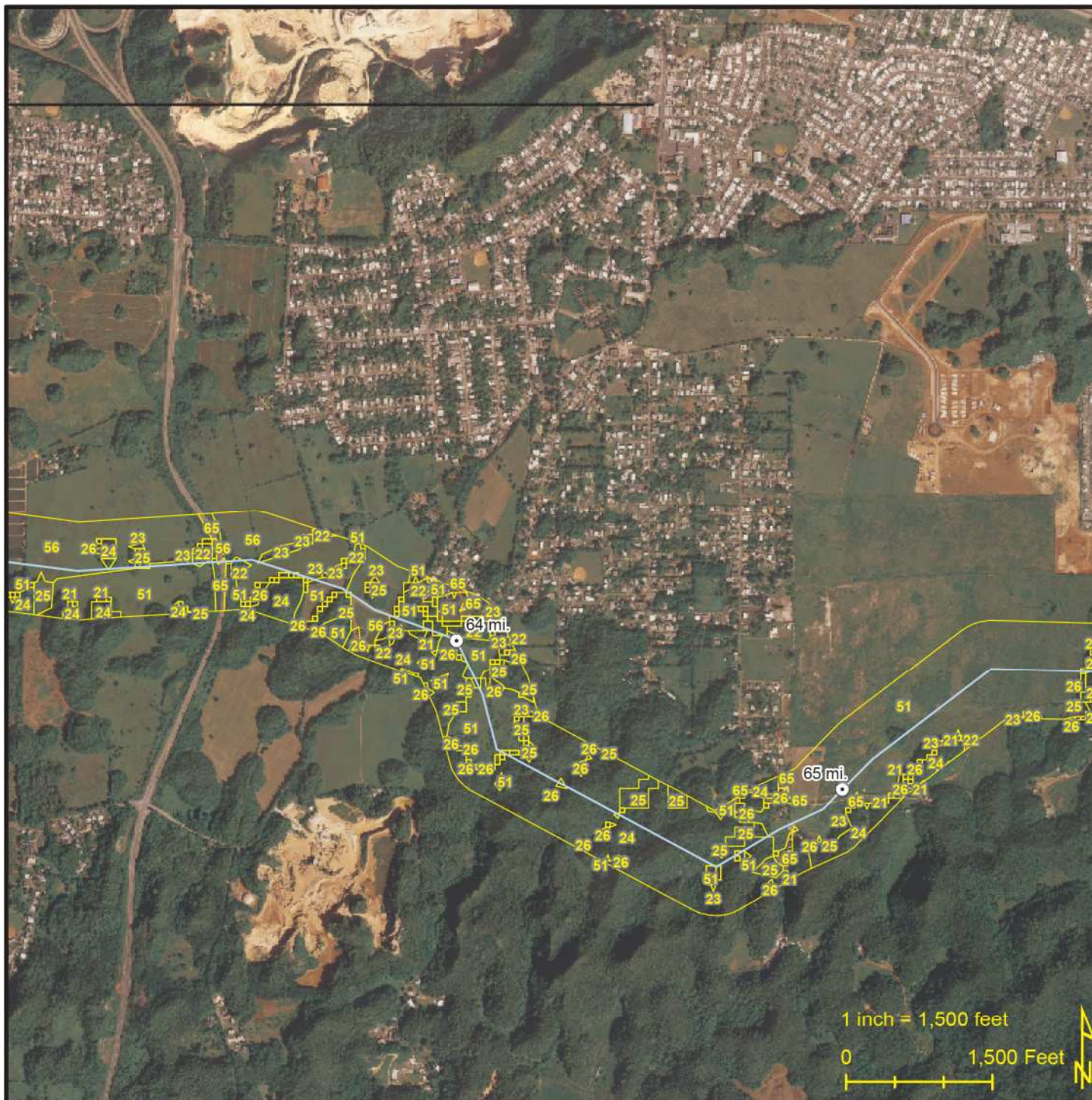
Ecoelectrica LNG Terminal to San Juan Power Plant

GAP Land Use

Map 32

- Mile Marker
- Pipeline
- Lateral
- Meter Station

See Sheet XX
for Land Use
Codes / Descriptions



Date: Aug 27, 2010



Via Verde
Pipeline Project

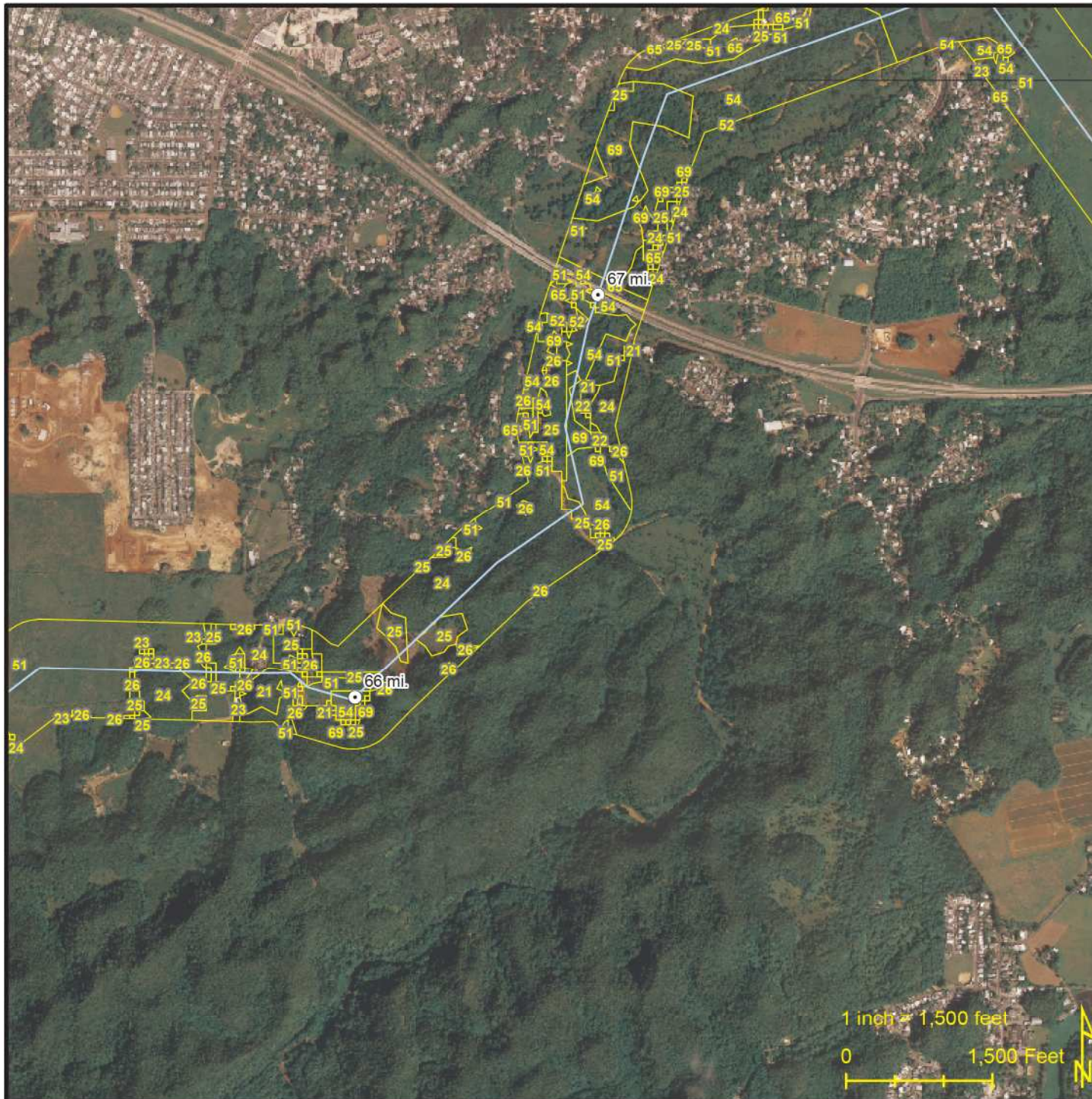
Ecoelectrica LNG Terminal to San Juan Power Plant

GAP Land Use

Map 33

- Mile Marker
- Pipeline
- Lateral
- Meter Station

See Sheet XX
for Land Use
Codes / Descriptions



Date: Aug 27, 2010



Via Verde
Pipeline Project

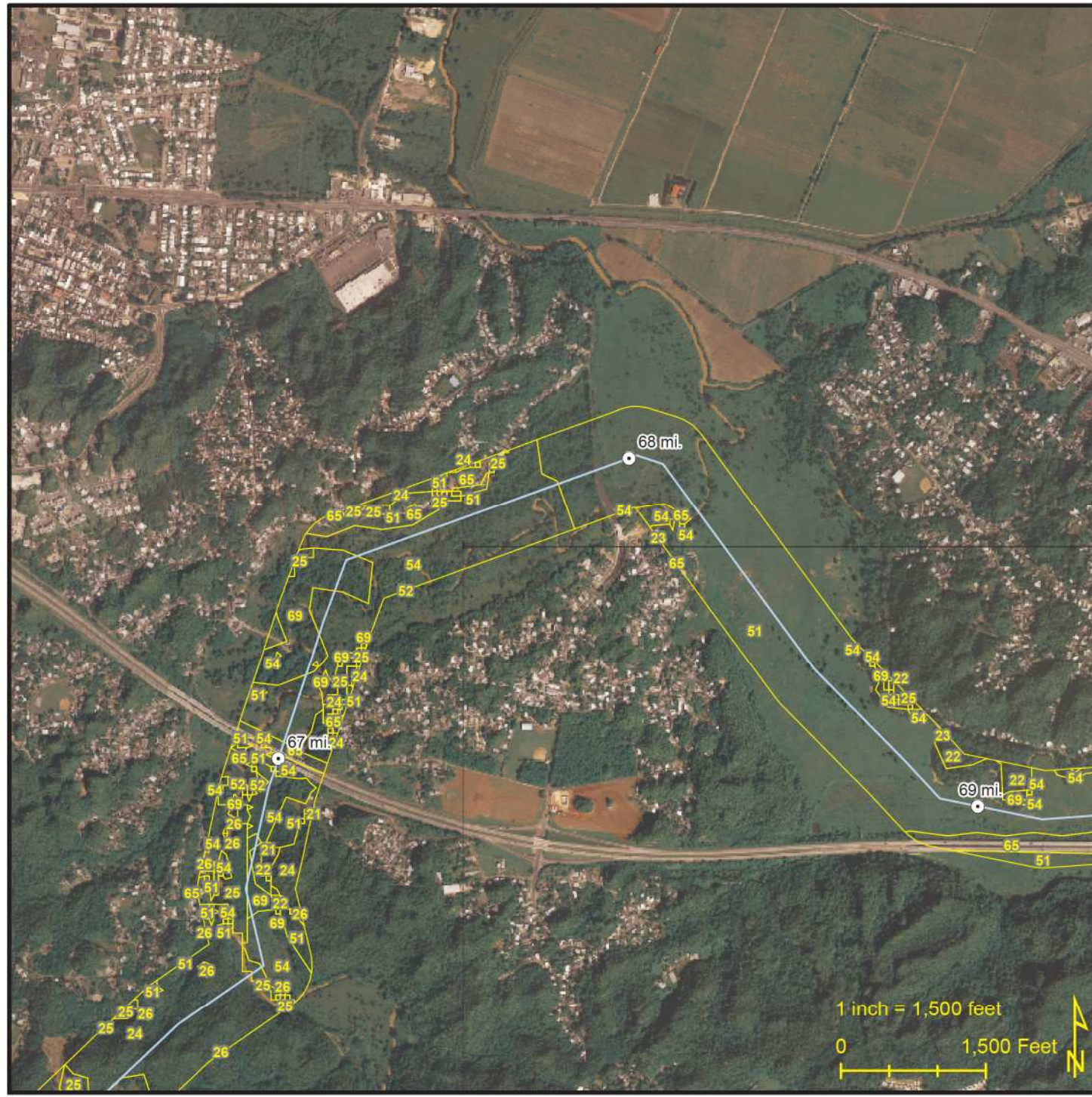
Ecoelectrica LNG Terminal to San Juan Power Plant

GAP Land Use

Map 34

- Mile Marker
- Pipeline
- Lateral
- Meter Station

See Sheet XX
for Land Use
Codes / Descriptions



Date: Aug 27, 2010



Via Verde
Pipeline Project

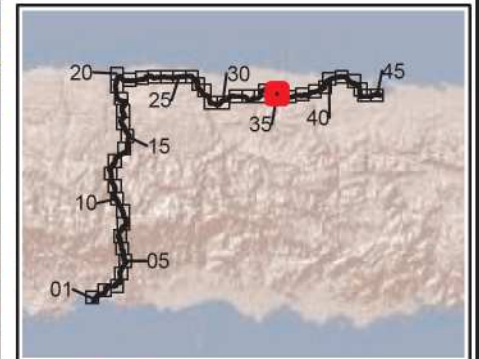
Ecoelectrica LNG Terminal to San Juan Power Plant

GAP Land Use

Map 35

- Mile Marker
- Pipeline
- Lateral
- Meter Station

See Sheet XX
for Land Use
Codes / Descriptions



Date: Aug 27, 2010



Via Verde
Pipeline Project

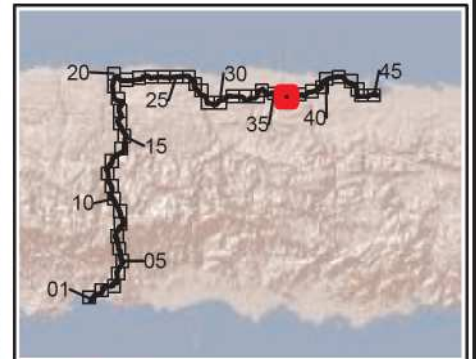
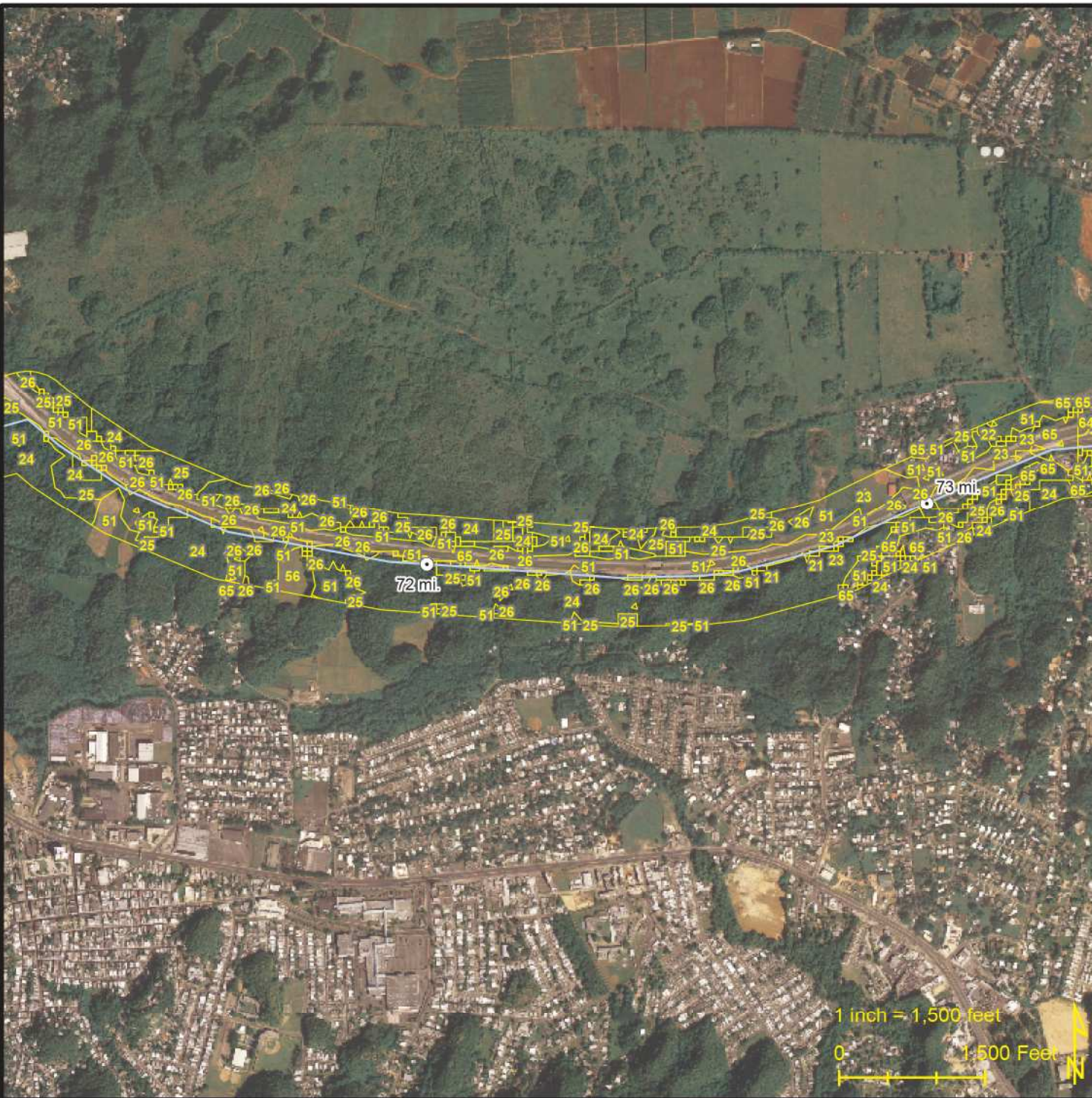
Ecoelectrica LNG Terminal
to San Juan Power Plant

GAP Land Use

Map 36

- ⊙ Mile Marker
- Pipeline
- Lateral
- Meter Station

See Sheet XX
for Land Use
Codes / Descriptions



BCPEABODY

Date: Aug 27, 2010



Via Verde Pipeline Project

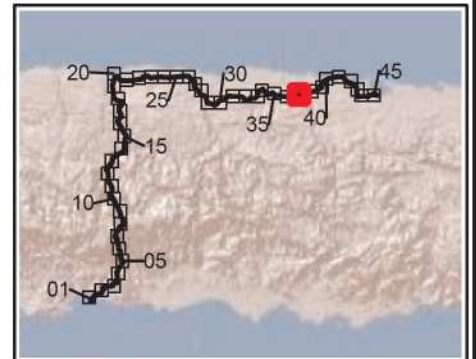
Ecoelectrica LNG Terminal to San Juan Power Plant

GAP Land Use

Map 37

- Mile Marker
- Pipeline
- Lateral
- Meter Station

See Sheet XX for Land Use Codes / Descriptions



Date: Aug 27, 2010



Via Verde
Pipeline Project

Ecoelectrica LNG Terminal
to San Juan Power Plant

GAP Land Use

Map 38

- Mile Marker
- Pipeline
- Lateral
- Meter Station

See Sheet XX
for Land Use
Codes / Descriptions



Date: Aug 27, 2010



Via Verde Pipeline Project

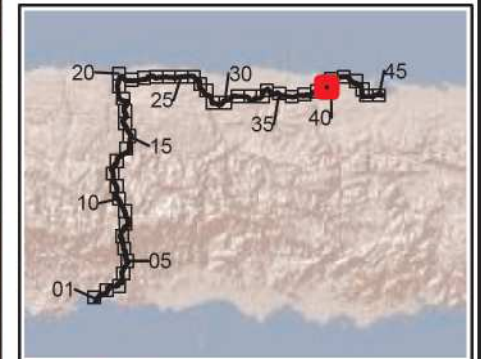
Ecoelectrica LNG Terminal to San Juan Power Plant

GAP Land Use

Map 39

- Mile Marker
- Pipeline
- Lateral
- Meter Station

See Sheet XX for Land Use Codes / Descriptions





Via Verde
Pipeline Project

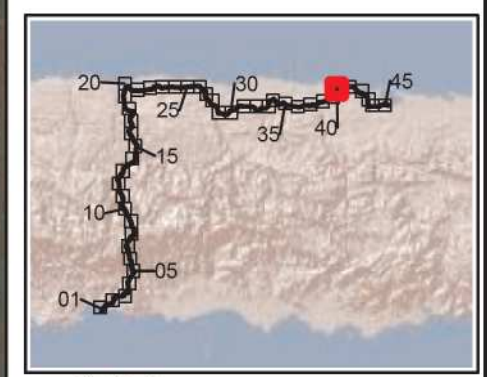
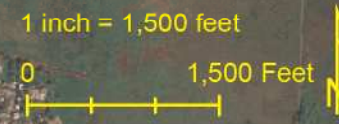
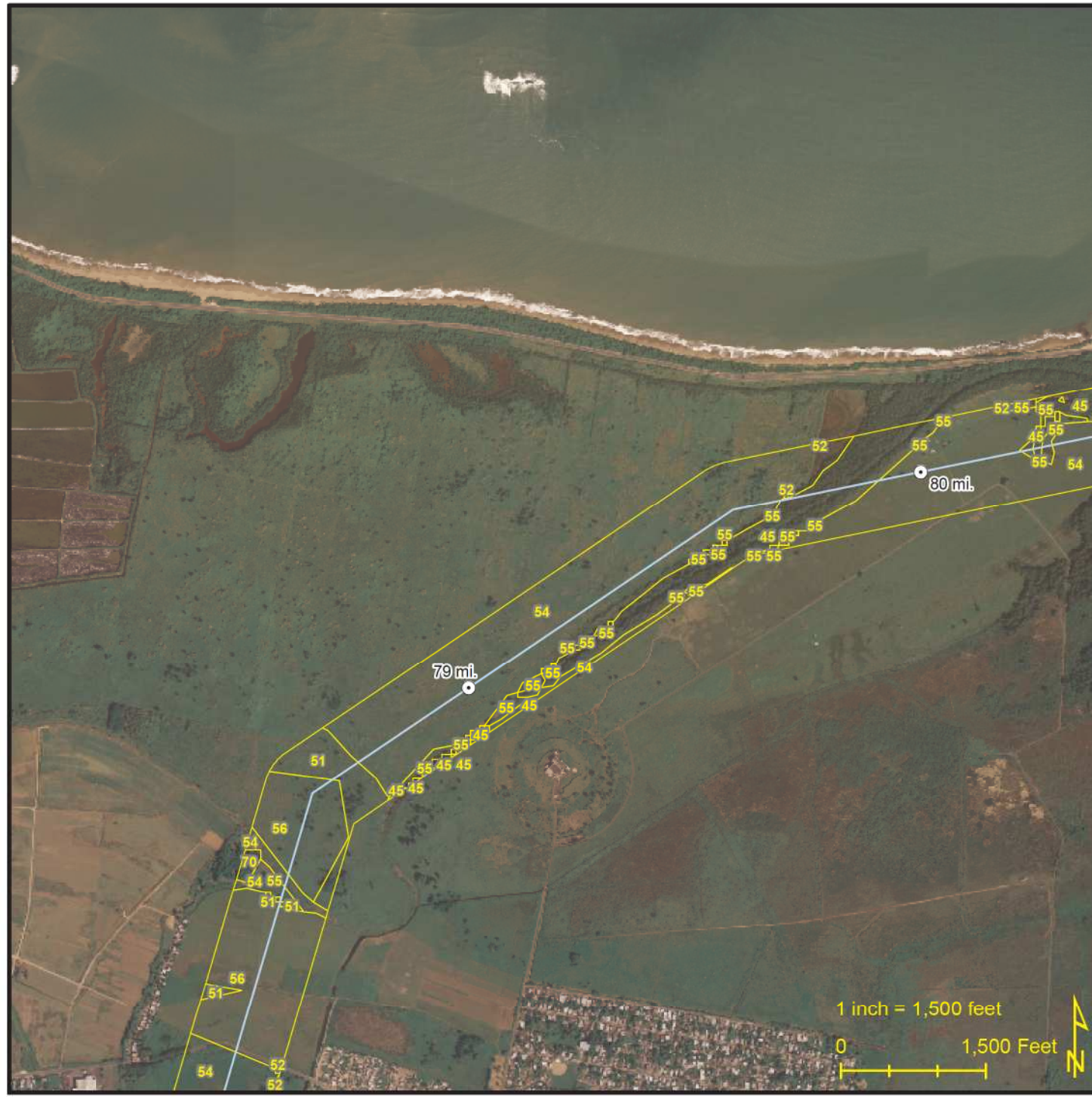
Ecoelectrica LNG Terminal
to San Juan Power Plant

GAP Land Use

Map 40

- Mile Marker
- Pipeline
- Lateral
- Meter Station

See Sheet XX
for Land Use
Codes / Descriptions



BCPEABODY

Date: Aug 27, 2010



Via Verde
Pipeline Project

Ecoelectrica LNG Terminal to San Juan Power Plant

GAP Land Use

Map 41

- ⊙ Mile Marker
- Pipeline
- Lateral
- Meter Station

See Sheet XX
for Land Use
Codes / Descriptions



BCPEABODY

Date: Aug 27, 2010



Via Verde Pipeline Project

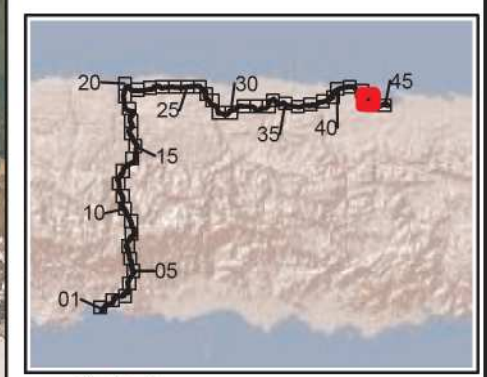
Ecoelectrica LNG Terminal to San Juan Power Plant

GAP Land Use

Map 43

- Mile Marker
- Pipeline
- Lateral
- Meter Station

See Sheet XX for Land Use Codes / Descriptions



Date: Aug 27, 2010



Via Verde
Pipeline Project

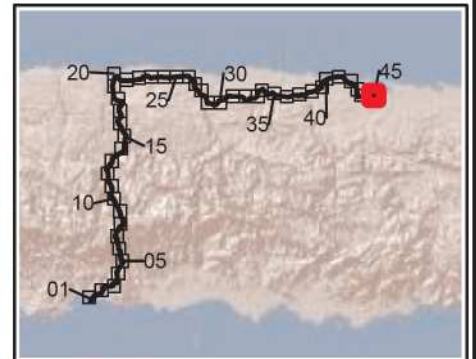
Ecoelectrica LNG Terminal to San Juan Power Plant

GAP Land Use

Map 45

- Mile Marker
- Pipeline
- Lateral
- Meter Station

See Sheet XX
for Land Use
Codes / Descriptions



Date: Aug 27, 2010