

Semiannual Report Of UST Performance Measures Mid Fiscal Year 2012 (October 1, 2011 - March 31, 2012)

Where does EPA get the performance data?

Twice each year, EPA collects data from states and territories regarding underground storage tank (UST) performance measures and makes the data publicly available. EPA directly provides data on work in Indian country, since the Agency implements the program for those sites. This data includes information such as the number of active and closed tanks, releases reported, cleanups initiated and completed, facilities in compliance with UST requirements, and inspections. EPA compiles the data and presents it in table format for all states, territories, and Indian country.

What are the UST performance measures?

The most current definitions for the UST performance measures are available on EPA's website www.epa.gov/oust/cat/camarchv.htm under **Definitions**.

What is in the mid fiscal year (FY) 2012 report?

	Page
UST Corrective Action Measures For Mid FY 2012	
Alphabetical By State Within Region	1
National Totals	5
UST National Backlog Graph	6
UST Compliance Measures For Mid FY 2012	7
States With More Stringent SOC Requirements	9
Inspection/Delivery Prohibition Actions For Mid FY 2012	11

How does the UST program's performance at mid FY 2012 compare with its FY 2012 goals and mid FY 2011 performance?

Mid FY 2012 UST Program Performance	Compare With FY 2012 UST Program Goal	Compare With Mid FY 2011 UST Program Performance
Completed 5,174 cleanups (including 21 in Indian country)	Complete 11,250 cleanups, including 42 in Indian country	At mid FY 2011, 5,721 cleanups (including 26 in Indian country) were completed
71.4 percent significant operational compliance rate at mid year	Achieve a significant operational compliance rate of 66.5 percent	At mid FY 2011, the significant operational compliance rate was 71.3 percent
Confirmed 2,528 new releases, well below the midpoint of EPA's goal to decrease confirmed releases	Decrease newly-confirmed releases to fewer than 8,120	At mid FY 2011, 3,003 new releases were confirmed

What other highlights are included in the mid FY 2012 report?

- There are 587,283 active USTs (at approximately 213,000 sites) which are regulated by EPA's UST program
- Since the 1984 inception of the UST program, 1,769,893 USTs have been closed



- Of the 504,339 releases reported since the beginning of the UST program, 419,001 (or 83 percent) have been cleaned up, leaving 85,338 remaining to be cleaned up
 - LUST Recovery Act money contributed to closing sites beginning in FY 2010 through the present and are included in the UST program's mid year cleanup totals; 2,060 sites have been closed overall using LUST Recovery Act money
- 47,963 on-site inspections at federally-regulated UST facilities were conducted between October 2011 and March 2012; of those:
 - 47,855 were conducted by states, territories, and third-party inspectors
 - 108 were conducted by EPA and credentialed tribal inspectors in Indian country

Where can I find performance data from previous years?

EPA's website www.epa.gov/oust/cat/camarchv.htm provides the most current report, as well as historical reports beginning with FY 1988, the first year reports were developed. Reports are listed beginning with the most recent first.

For more information, contact Steven McNeely, EPA's Office of Underground Storage Tanks, at mcneely.steven@epa.gov or 703-603-7164.

UST Corrective Action Measures for Mid-Year FY 2012 (Data through March 31, 2012)

Region / State	Number of Active Tanks	Number of Closed Tanks	Confirmed Releases		Cleanups Initiated	Cleanups Completed		Cleanups Remaining
			Actions This Year	Cumulative		Actions This Year	Cumulative	
ONE								
CT	6,477	26,453	30	2,839	2,790	44	1,979	860
MA	9,714	23,909	14	6,295	6,265	31	5,970	325
ME	2,855	13,072	13	2,624	2,588	21	2,578	46
NH	3,057	11,636	30	2,531	2,531	49	1,862	669
RI	1,631	8,310	3	1,347	1,347	8	1,139	208
VT	3,214	5,807	2	2,043	2,035	17	1,414	629
Subtotal	26,948	89,187	92	17,679	17,556	170	14,942	2,737
TWO								
NJ	14,859	60,598	23	10,674	9,823	350	7,082	3,592
NY	25,253	95,226	153	28,483	28,452	299	26,642	1,841
PR	4,494	5,761	2	1,053	824	2	494	559
VI	144	278	1	25	24	0	15	10
Subtotal	44,750	161,863	179	40,235	39,123	651	34,233	6,002
THREE								
DC	637	3,310	8	898	884	12	796	102
DE	1,315	7,165	20	2,615	2,535	39	2,472	143
MD	8,196	34,785	64	11,699	11,519	98	11,297	402
PA	23,436	64,189	96	15,379	15,289	188	12,774	2,605
VA	18,558	61,080	82	11,965	11,885	104	11,521	444
WV	5,122	19,958	25	3,355	3,298	43	2,583	772
Subtotal	57,264	190,487	295	45,911	45,410	484	41,443	4,468

Definition of confirmed releases, cleanups initiated, and cleanups completed are on OUST's website at <http://www.epa.gov/oust/cat/PMDefinitions.pdf>

UST Corrective Action Measures for Mid-Year FY 2012 (Data through March 31, 2012)

Region / State	Number of Active Tanks	Number of Closed Tanks	Confirmed Releases		Cleanups Initiated	Cleanups Completed		Cleanups Remaining
			Actions This Year	Cumulative		Actions This Year	Cumulative	
FOUR								
AL	18,292	30,110	38	11,611	11,507	51	10,309	1,302
FL	22,739	109,908	72	26,516	16,445	291	13,228	13,288
GA	29,415	48,717	100	12,843	12,608	132	11,347	1,496
KY	10,880	38,737	105	15,748	15,672	325	14,126	1,622
MS	8,386	23,323	38	7,316	7,214	34	6,983	333
NC	27,022	68,061	70	25,050	23,003	196	20,248	4,802
SC	11,812	32,951	31	9,564	9,252	80	6,960	2,604
TN	16,428	36,909	73	14,403	14,396	83	13,910	493
Subtotal	144,974	388,716	527	123,051	110,097	1,192	97,111	25,940
FIVE								
IL	20,953	66,628	162	25,224	23,632	417	20,194	5,030
IN	13,347	37,836	76	9,361	9,174	79	7,330	2,031
MI	18,896	69,202	71	22,191	21,748	72	13,125	9,066
MN	12,653	32,270	86	10,870	10,713	143	10,354	516
OH	22,405	44,368	221	29,166	28,475	297	26,904	2,262
WI	14,550	67,513	51	19,056	18,842	120	17,253	1,803
Subtotal	102,804	317,817	667	115,868	112,584	1,128	95,160	20,708

Definition of confirmed releases, cleanups initiated, and cleanups completed are on OUST's website at <http://www.epa.gov/oust/cat/PMDefinitions.pdf>

UST Corrective Action Measures for Mid-Year FY 2012 (Data through March 31, 2012)

Region / State	Number of Active Tanks	Number of Closed Tanks	Confirmed Releases		Cleanups Initiated	Cleanups Completed		Cleanups Remaining
			Actions This Year	Cumulative		Actions This Year	Cumulative	
SIX								
AR	9,044	21,091	20	1,556	1,272	14	1,270	286
LA	11,546	33,568	118	4,453	4,453	202	3,557	896
NM	3,840	12,661	10	2,594	1,917	16	1,878	716
OK	10,357	26,984	38	4,915	4,901	41	4,627	288
TX	51,345	117,801	112	26,422	25,501	178	24,609	1,813
Subtotal	86,132	212,105	298	39,940	38,044	451	35,941	3,999
SEVEN								
IA	7,215	22,966	26	6,133	5,820	61	5,005	1,128
KS	6,734	20,499	26	5,024	4,922	57	3,646	1,378
MO	9,393	30,975	57	6,702	6,682	55	5,728	974
NE	6,648	14,793	32	6,267	5,029	60	4,737	1,530
Subtotal	29,990	89,233	141	24,126	22,453	233	19,116	5,010
EIGHT								
CO	7,538	22,154	80	7,746	7,510	98	7,003	743
MT	3,118	12,566	9	3,025	2,874	20	2,025	1,000
ND	2,199	7,348	1	852	842	1	813	39
SD	2,957	7,077	17	2,521	2,480	10	2,489	32
UT	3,805	13,398	33	4,654	4,567	43	4,236	418
WY	1,809	7,990	2	2,628	2,075	44	1,516	1,112
Subtotal	21,426	70,533	142	21,426	20,348	216	18,082	3,344

Definition of confirmed releases, cleanups initiated, and cleanups completed are on OUST's website at <http://www.epa.gov/oust/cat/PMDefinitions.pdf>

UST Corrective Action Measures for Mid-Year FY 2012 (Data through March 31, 2012)

Region / State	Number of Active Tanks	Number of Closed Tanks	Confirmed Releases		Cleanups Initiated	Cleanups Completed		Cleanups Remaining
			Actions This Year	Cumulative		Actions This Year	Cumulative	
NINE								
AS	32	104	0	16	14	0	14	2
AZ	6,975	21,179	36	8,632	8,156	38	7,852	780
CA	37,838	128,993	47	43,800	40,367	420	35,603	8,197
GU	258	451	0	139	139	0	117	22
HI	1,579	5,435	3	2,038	2,009	16	1,887	151
MP	67	29	0	11	10	0	10	1
NV	3,806	7,340	9	2,480	2,480	3	2,321	159
Subtotal	50,555	163,531	95	57,116	53,175	477	47,804	9,312
TEN								
AK	1,051	6,608	11	2,350	2,321	26	1,950	400
ID	3,464	10,632	7	1,460	1,435	11	1,331	129
OR	5,771	26,259	26	7,295	7,080	57	6,318	977
WA	9,610	36,941	46	6,586	6,193	57	4,590	1,996
Subtotal	19,896	80,440	90	17,691	17,029	151	14,189	3,502

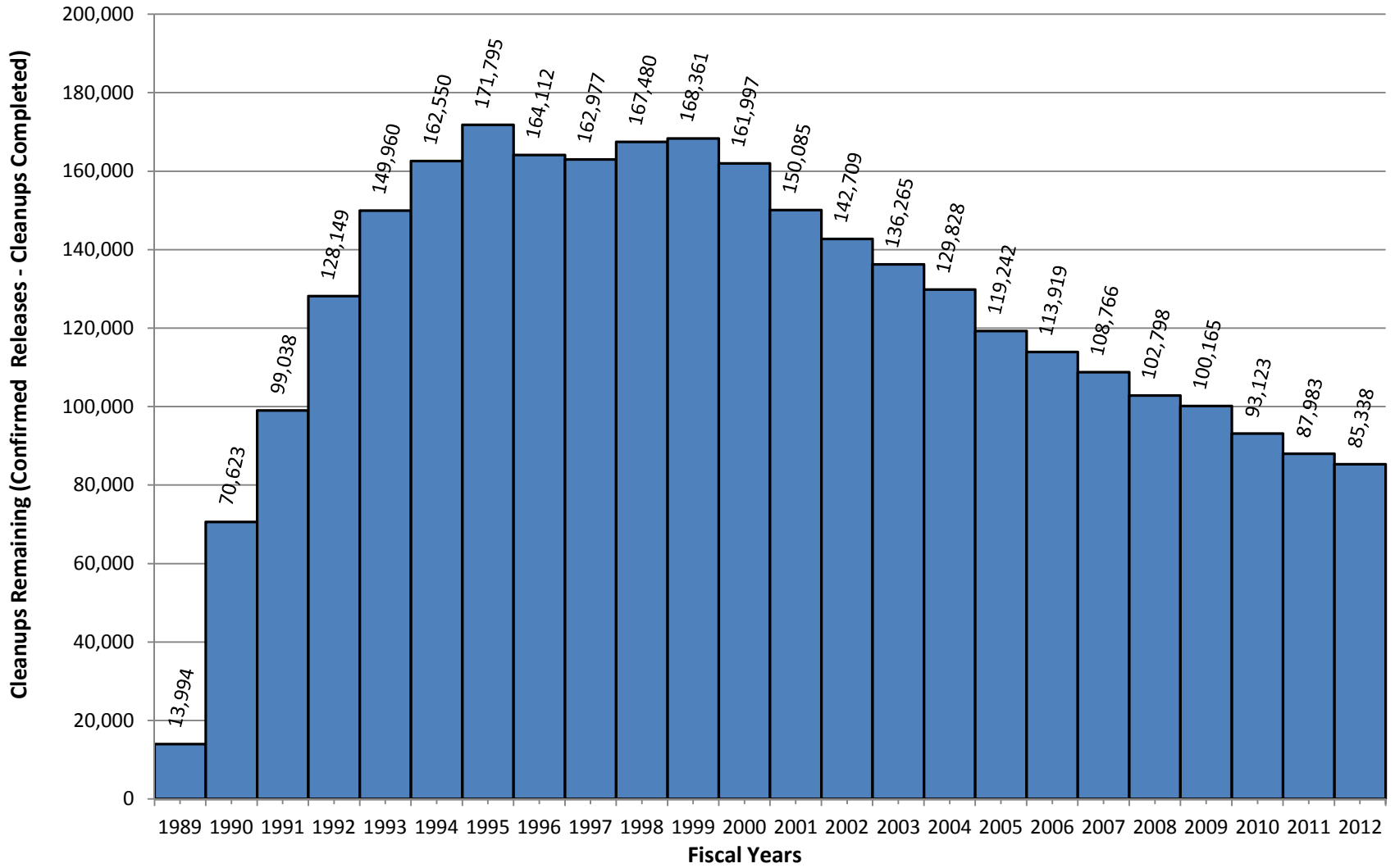
Definition of confirmed releases, cleanups initiated, and cleanups completed are on OUST's website at <http://www.epa.gov/oust/cat/PMDefinitions.pdf>

UST Corrective Action Measures for Mid-Year FY 2012 (Data through March 31, 2012)

Region / State	Number of Active Tanks	Number of Closed Tanks	Confirmed Releases		Cleanups Initiated	Cleanups Completed		Cleanups Remaining
			Actions This Year	Cumulative		Actions This Year	Cumulative	
REGIONAL CORRECTIVE ACTIONS FOR INDIAN COUNTRY								
REGION 1	9	5	0	1	1	0	1	0
REGION 2	132	28	0	6	2	0	5	1
REGION 3	0	0	0	0	0	0	0	0
REGION 4	63	62	0	14	15	0	13	1
REGION 5	455	1,009	0	223	213	0	160	63
REGION 6	310	274	0	64	64	1	60	4
REGION 7	91	93	0	20	21	0	13	7
REGION 8	545	1,969	1	511	498	7	348	163
REGION 9	577	1,517	1	276	222	10	214	62
REGION 10	362	1,024	0	181	176	3	166	15
SUBTOTAL	2,544	5,981	2	1,296	1,212	21	980	316
NATIONAL TOTAL								
	Number of Active Tanks	Number of Closed Tanks	Confirmed Releases		Cleanups Initiated	Cleanups Completed		Cleanups Remaining
			Actions This Year	Cumulative		Actions This Year	Cumulative	
NATIONAL TOTAL	587,283	1,769,893	2,528	504,339	477,031	5,174	419,001	85,338

Definitions of confirmed releases, cleanups initiated, and cleanups completed are on OUST's website at <http://www.epa.gov/oust/cat/PMDefinitions.pdf>

National UST Cleanups Remaining FY 1989 Through Mid-Year FY 2012



**UST Compliance Measures
for Mid-Year FY 2012 (April 1, 2011 - March 31, 2012)**

Region / State	% in Significant Operational Compliance with Release Prevention Regulations	% in Significant Operational Compliance with Release Detection Regulations	% of UST Facilities in SOC w/UST Release Detection and Release Prevention
ONE			
CT*	88%	79%	76%
MA	60%	62%	34%
ME	68%	66%	64%
NH	70%	76%	54%
RI*	85%	70%	63%
VT*	75%	79%	72%
SUBTOTAL	72%	71%	56%
TWO			
NJ	95%	96%	91%
NY	86%	77%	71%
PR	54%	45%	45%
VI	83%	92%	75%
SUBTOTAL	86%	80%	75%
THREE			
DC	86%	76%	71%
DE	75%	84%	69%
MD	81%	90%	76%
PA	94%	89%	84%
VA	81%	73%	64%
WV	85%	80%	72%
SUBTOTAL	87%	83%	75%

Region / State	% in Significant Operational Compliance with Release Prevention Regulations	% in Significant Operational Compliance with Release Detection Regulations	% of UST Facilities in SOC w/UST Release Detection and Release Prevention
FOUR			
AL	87%	78%	74%
FL	98%	82%	81%
GA	85%	71%	67%
KY	75%	77%	64%
MS	80%	81%	71%
NC	83%	79%	74%
SC	88%	86%	79%
TN	89%	88%	81%
SUBTOTAL	87%	79%	74%
FIVE			
IL*	81%	72%	59%
IN	78%	76%	69%
MI*	84%	59%	54%
MN	76%	76%	69%
OH	88%	68%	64%
WI*	87%	82%	74%
SUBTOTAL	83%	71%	64%
SIX			
AR	66%	73%	55%
LA	81%	81%	71%
NM	79%	81%	69%
OK	83%	85%	75%
TX	92%	84%	81%
SUBTOTAL	86%	82%	76%

These compliance rates indicate the percentage of recently-inspected facilities found to be in significant operational compliance (SOC) with federal UST requirements from 4/1/11 through 3/31/12. In accordance with EPA guidelines, states are allowed to report based on requirements more stringent than the federal SOC requirements. The states identified with an asterisk indicated they had done so, as described in the following section. Furthermore, states have different approaches to targeting inspections. For example, some states focus inspections on suspected non-compliant facilities, while other states conduct random inspections.

* States reporting based on requirements more stringent than the federal SOC requirements

** DNA = Data Not Available. Note: EPA Regions 1, 2 and 7 did not perform any inspections on tribal lands for the reporting period.

** N/A = Not Applicable. Note: EPA Region 3 does not have any federally recognized tribes.

**UST Compliance Measures
for Mid-Year FY 2012 (April 1, 2011 - March 31, 2012)**

Region / State	% in Significant Operational Compliance with Release Prevention Regulations	% in Significant Operational Compliance with Release Detection Regulations	% of UST Facilities in SOC w/UST Release Detection and Release Prevention
SEVEN			
IA	86%	81%	71%
KS*	61%	94%	58%
MO*	78%	95%	76%
NE	83%	78%	69%
SUBTOTAL	77%	88%	69%
EIGHT			
CO	86%	81%	78%
MT	98%	96%	96%
ND	89%	86%	82%
SD	77%	79%	67%
UT	84%	84%	74%
WY	96%	96%	92%
SUBTOTAL	87%	85%	80%
NINE			
AS	**DNA	**DNA	**DNA
AZ	88%	89%	84%
CA	84%	75%	67%
GU	97%	82%	82%
HI	99%	94%	94%
MP	100%	100%	100%
NV	86%	80%	74%
SUBTOTAL	85%	78%	71%

Region / State	% in Significant Operational Compliance with Release Prevention Regulations	% in Significant Operational Compliance with Release Detection Regulations	% of UST Facilities in SOC w/UST Release Detection and Release Prevention
TEN			
AK	83%	80%	70%
ID*	82%	75%	65%
OR	96%	93%	91%
WA	80%	77%	64%
SUBTOTAL	85%	81%	72%
INDIAN COUNTRY			
REGION 1	**DNA	**DNA	**DNA
REGION 2	**DNA	**DNA	**DNA
REGION 3	**N/A	**N/A	**N/A
REGION 4	86%	93%	80%
REGION 5	76%	61%	53%
REGION 6	92%	90%	84%
REGION 7	**DNA	**DNA	**DNA
REGION 8	80%	68%	61%
REGION 9	85%	83%	75%
REGION 10	81%	77%	68%
SUBTOTAL	82%	75%	68%
NATIONAL TOTAL			
TOTAL	84.5%	78.9%	71.4%

These compliance rates indicate the percentage of recently-inspected facilities found to be in significant operational compliance (SOC) with federal UST requirements from 4/1/11 through 3/31/12. In accordance with EPA guidelines, states are allowed to report based on requirements more stringent than the federal SOC requirements. The states identified with an asterisk indicated they had done so, as described in the following section. Furthermore, states have different approaches to targeting inspections. For example, some states focus inspections on suspected non-compliant facilities, while other states conduct random inspections.

* States reporting based on requirements more stringent than the federal SOC requirements

** DNA = Data Not Available. Note: EPA Regions 1, 2 and 7 did not perform any inspections on tribal lands for the reporting period.

** N/A = Not Applicable. Note: EPA Region 3 does not have any federally recognized tribes.

States With Requirements More Stringent Than The Federal Significant Operational Compliance Requirements

CONNECTICUT

Release Prevention: Operation and Maintenance of Cathodic Protection

- Lining not allowed.

Release Detection: Testing

- Tanks and piping require weekly and monthly monitoring for releases and records must be available (for 2 of the most recent consecutive months and for 8 of the last 12 months).
- Statistical Inventory Reconciliation (SIR) not allowed as a stand-alone method.

IDAHO

Release Prevention: Operation and Maintenance of Cathodic Protection

- Three 60-day rectifier inspection checks are required.
- Two three-year system checks are required for impressed current and galvanic.

Release Detection: Testing

- Records required for the past 12 months.

Other

- Percent of UST facilities in compliance with both release detection and release prevention also factors in financial responsibility and EPA requirements, such as operator training and secondary containment.

ILLINOIS

Release Detection: Testing

- Owner/operator must produce records within 30 minutes of arrival of inspector.

MICHIGAN

Release Detection: Required Methods

- Owners/operators must have inventory control plus another method of release detection.

RHODE ISLAND

Release Prevention: Operation and Maintenance

- All tanks and piping are required to be tightness tested after a repair. No exemptions.

Release Prevention: Operation and Maintenance of Cathodic Protection

- Impressed current cathodic protection systems are required to be tested every 2 years.
- Sacrificial anode systems are required to be tested every 3 years.

Release Detection: Testing

- Records required for the past 36 months.
- Inventory control is required for all tanks (single-walled and double-walled).
- The automatic tank gauge (ATG) has to be checked monthly and have an annual test conducted.
- Tightness testing schedule is different than the federal requirement; it depends on the type of tank.
 - o Tank tightness must be performed on all single walled tanks.
 - o Tightness tests must be performed every 5 years after the installation of the ATG until the tank has been installed for 20 years and every 2 years thereafter.
 - o UST systems upgraded with interior lining and/or cathodic protections are not required to have an ATG for 10 years after the upgrade. Tank tightness testing must be conducted annually during these 10 years. After 10 years, an ATG is required and tank tightness testing must be performed every 5 years until the tank has been installed for 20 years and then every 2 years thereafter. The results of all tightness tests shall be maintained for 3 years beyond the life of the facility.
- Groundwater or vapor monitoring not accepted as a method of leak detection.
- SIR not accepted.

VERMONT

Release Prevention: Operation and Maintenance of Cathodic Protection

- Lining not allowed unless with impressed current.

Release Detection: Method Presence and Performance Requirements

- Weekly monitoring required for tank and piping. Records must be available for the two most recent consecutive months and for 8 of the last 12 months.

Release Detection: Testing

- Inventory control /Tank Tightness Testing (TTT) not allowed as a release detection method after 6/30/98.
- Manual Tank Gauge (MTG) allowed alone up to 550 gallons; 551-1,000 gallons, MTG with annual TTT.

WISCONSIN

Release Prevention: Operation and Maintenance of Cathodic Protection

- Require annual cathodic protection test.

Release Prevention: Spill Prevention

- Require USTs to be equipped with overfill prevention equipment that will operate as follows (NFPA 30-2.6.1.4 – 2000 and 2003 version):
 - Automatically shut off the flow of liquid into the tank when the tank is no more than 95% full;
 - Alert the transfer operator when the tank is no more than 90% full by restricting the flow of liquid into the tank or triggering the high-level alarm; and,
 - Other methods approved by the authority having jurisdiction.

Release Detection: Testing

- Require NFPA 30A09.2.1 (2000 and 2003 versions). Accurate daily inventory records shall be maintained and reconciled for all liquid fuel storage tanks for indication of possible leakage from tanks or piping. The records shall be kept on the premises or shall be made available to the authority having jurisdiction for the inspection within 24 hours of a written or verbal request. The records shall include, as a minimum and by product, daily reconciliation between sales, use, receipts, and inventory on hand. If there is more than one storage system serving an individual pump or dispensing device for any product, the reconciliation shall be maintained separately for each system.

Release Detection: Deferment

- No exclusion or deferment for "remote" emergency generator tanks.

Other

- Require annual permit to operate that includes verification of financial responsibility.

**Inspection/Delivery Prohibition Actions
for Mid-Year FY 2012 (October 1, 2011 - March 31, 2012)**

Region / State	Number of On-Site Inspections Conducted	Number of Delivery Prohibition Actions
ONE		
CT	347	3
MA	299	0
ME	314	0
NH	188	3
RI	104	0
VT	107	0
SUBTOTAL	1,359	6
TWO		
NJ	723	38
NY	1,477	0
PR	90	0
VI	12	0
SUBTOTAL	2,302	38
THREE		
DC	33	0
DE	37	12
MD	484	8
PA	1,715	26
VA	1,061	6
WV	296	1
SUBTOTAL	3,626	53

Region / State	Number of On-Site Inspections Conducted	Number of Delivery Prohibition Actions
FOUR		
AL	1,660	86
FL	3,871	213
GA	1,992	589
KY	902	18
MS	525	46
NC	1,345	18
SC	1,884	202
TN	1,172	33
SUBTOTAL	13,351	1,205
FIVE		
IL	1,632	285
IN	808	6
MI	891	54
MN	534	3
OH	1,254	10
WI	1,590	33
SUBTOTAL	6,709	391
SIX		
AR	666	73
LA	812	17
NM	436	0
OK	1,610	41
TX	3,885	**DNA
SUBTOTAL	7,409	131

Not all states fully implement delivery prohibition at this time, and some states prohibit deliveries primarily for registration violations.

** DNA = Data Not Available.

** N/A = Not Applicable. Note: EPA Region 3 does not have any federally recognized tribes.

**Inspection/Delivery Prohibition Actions
for Mid-Year FY 2012 (October 1, 2011 - March 31, 2012)**

Region / State	Number of On-Site Inspections Conducted	Number of Delivery Prohibition Actions
SEVEN		
IA	721	11
KS	755	16
MO	1,223	0
NE	311	0
SUBTOTAL	3,010	27
EIGHT		
CO	803	21
MT	275	2
ND	101	0
SD	134	0
UT	312	0
WY	169	0
SUBTOTAL	1,794	23
NINE		
AS	0	0
AZ	264	1
CA	6,368	55
GU	2	0
HI	206	0
MP	12	0
NV	545	5
SUBTOTAL	7,397	61

Region / State	Number of On-Site Inspections Conducted	Number of Delivery Prohibition Actions
TEN		
AK	62	8
ID	104	0
OR	197	33
WA	535	0
SUBTOTAL	898	41
INDIAN COUNTRY		
REGION 1	0	0
REGION 2	0	0
REGION 3	**N/A	**N/A
REGION 4	6	0
REGION 5	29	0
REGION 6	6	0
REGION 7	0	0
REGION 8	0	0
REGION 9	62	0
REGION 10	5	0
SUBTOTAL	108	0
NATIONAL TOTAL		
TOTAL	47,963	1,976

Not all states fully implement delivery prohibition at this time, and some states prohibit deliveries primarily for registration violations.

** DNA = Data Not Available.

** N/A = Not Applicable. Note: EPA Region 3 does not have any federally recognized tribes.