



AAAFES RETIRED EMPLOYEES ASSOCIATION

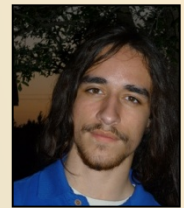
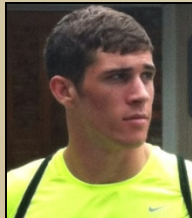
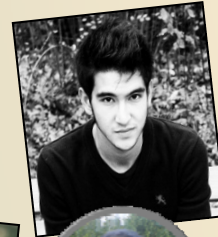
# NEWSLETTER

JULY 2012

SUPPORTING THE INTERESTS OF AAAFES, ITS RETIREES AND THE PEOPLE IT SERVES

## AREA Scholarship Program 2012

19 students share \$47,000 in scholarships  
Read their stories on pages 10-16



## Tom Shull named Exchange's first civilian director and CEO



Tom Shull...first civilian Director and CEO of the Exchange.

DALLAS – After a rigorous process led by executive search firm Reffett Associates, Ltd, the Army and Air Force Exchange Service's Board of Directors has selected military and retail veteran Tom Shull to lead the Exchange Service.

Shull will be the first civilian Director and Chief Executive Officer in the nearly 117-year history of the \$10 billion military retailer. The change, mandated by the DoD which instructed the conversion of the Exchange's Commanding General's assignment to a non-military position, means Shull replaces the Exchange's last uniformed Commander, Brig. Gen. Fran Hendricks.

In an announcement informing the Exchange's 43,000 employees of Shull's selection, the organization's Chairman of the Board, Lt. Gen. Ray-

mond Mason, USA, cited "vast retail experience and proven leadership skills" and said the new Director and Chief Executive Officer will "be a magnificent first Director and Chief Executive Officer as the Exchange moves forward in an ever changing marketplace."

The announcement also highlighted Shull's experience as a West Point graduate who received a Harvard University MBA. In addition to serving in a variety of positions in the U.S. Army, including infantry company commander and assignments at the White House and National Security Council, he has served as CEO of Wise Foods Inc., Hanover Direct Inc., Barney's New York and Meridian Ventures LLC. *Read more about Mr. Shull's road to the Exchange on page 21.*



**CHUCK POFFENBARGER, PRESIDENT**

# AREA & Chapter Goings On

Bit O' This  
Bit O' That

Welcome to the July, 2012 edition of AREA's Newsletter, and the first month of Summer.

"Mosquito is out,  
it's the end of the day;  
she's humming and hunting  
her evening away.  
Who knows why such hunger  
arrives on such wings  
at sundown? I guess  
it's the nature of things."

- N. M. Boedecker, *Midsummer Night Itch*

"Many public-school children seem to know only two dates: 1492 and 4th of July; and as a rule they don't know what happened on either occasion."

- Mark Twain

Wow, I sure don't know what happened to the first part of the year. It's an old cliché but where has the time gone? Before we know it, the leaves will be turning and we'll be getting out our heavy jackets and other items for the long Winter.

The North Texas chapter has started a program to generate income for the scholarship program that could easily be used by other chapters. It's called the "Tag-a-Long Scholarship Program" Their board of directors voted to include an additional charge to major events in support of the AREA Scholarship Program. The "Tag-a-Long" was recently added to the "NTC Annual Benefits Luncheon" price. Normally, the Tag-a-Long is about \$2.50 per person. Since it's added to the event price, people don't really notice it. In their promotional material, they mention that the event price contains a Tag-a-Long amount for support of the AREA Scholarship Program. Mail the total Tag-a-Long amount to AREA Scholarship Program, PO Box 380614, Duncanville, TX 75138

I encourage Local Chapters to incorporate this simple idea in their event pricing to benefit the Exchange Community. This simple pricing technique makes it easy for Chapter members to contribute on a recurring basis to this important program. For more information, contact Richard Sheff at [sheffrl@aol.com](mailto:sheffrl@aol.com)

We have had a normal Spring here in North Texas, the first in several years. On May 30th, it rained all evening and into the morning. Actually didn't stop until about noon. That's very unusual for us as storms typically just blow through in an half-hour or so. The rain in the Winter and now Spring has filled up the area's lakes, which are our primary water source. They were at 30% - 50% capacity this time last year, just before the record draught. So we're in good shape now, even if the summer heat is severe. It's nice to have a normal rain season for a change. They say this is due to El Nino pushing La Nina aside for a season or so.

I hope your spring is also nice. I'll see you in October, the first month of Autumn.

*Chuck*

AREA ...*JUST FOR YOU*

# YOUR AAFES BENEFITS...

## Use the Emergency Room for Real Emergencies

Did you know almost 70% of emergency room visits are not really emergencies at all? When you need medical care and our regular doctor is not available, you have choices:

**Walk-in clinics.** Use walk-in clinics for minor problems-ear infections, colds, allergies, strep throat and bronchitis. Clinics provide convenient, low cost treatment and can be found in stores and pharmacies. Clinics are overseen by a doctor, with nurse practitioners or physician assistants on site.

**Urgent care centers.** Use these centers for more serious problems, such as sprained ankles, fever, and minor cuts and burns. These centers are overseen by doctors, with doctors providing the service.

**Hospital emergency rooms (ER).** If you're experiencing symptoms like chest pain, trouble breathing, or uncontrolled bleeding-something that could be life threatening-don't wait. Call 911 or go straight to the nearest ER. True emergencies are treated first. But unless your life is in danger, you'll go to the end of the line. The ER is also your most expensive option for care.

**DoD NAF Health Benefit Plan participants save money by using walk-in clinics or urgent care centers as shown below:**

Walk-In Clinics and Urgent Care Centers	\$20 copay
Emergency Room	\$350 copay for both in-network and out-of-network facilities. The copay is waived if you are admitted.

**Find Care options at home or on the go!**

Now you can access [www.aetna.com](http://www.aetna.com) from your smart phone or web-enabled device to find where to get medical care when away from home.

You can also call the toll-free Informed Health Line at 1-800-556-1555; 24 hours a day, 7 days a week. Talk to a registered nurse who can answer your health-related questions.

### Get the new I-Triage mobile application (App)

Aetna has announced the availability of the I-Triage Mobile App to make it easier for you to live a healthier life by placing the power of health information in your hands.

The iTriage App allows you to:

- search for providers, symptoms, diseases, procedures, or medications to find the right care for your needs.
- identify the nearest walk-in clinics and urgent care facilities to your current location

For the free download of the latest version of the iTriage App for your iPhone, iPod Touch, or Android mobile devices, visit: <http://www.itriagehealth.com/get-mobile>.



**Download of the latest version of the free iTriage App for quick and easy medical information.**



**AAFES RETIRED  
EMPLOYEES ASSOCIATION**

The AREA Newsletter is published in  
January, April, July and October

**Mailing Address:**

AREA  
P. O. Box 380614  
Duncanville, TX 75138-0614

**President:**

Chuck Poffenbarger  
[cpoffen@yahoo.com](mailto:cpoffen@yahoo.com)  
Tel: (972) 296-0388  
FAX: (972) 692-5176

**Membership & Address Changes:**

Send your NEWSLETTER ADDRESS and MEMBERSHIP changes to the Membership Director Pat Weaver.

[ken-pat@sbcglobal.net](mailto:ken-pat@sbcglobal.net)  
Tel: (972) 780-9810

**Newsletter input:**

Submit articles for the newsletter to the editor by e-mail to Newsletter Editor: Larry E. Phillips

[AREA-Newsletter@tx.rr.com](mailto:AREA-Newsletter@tx.rr.com)

**AREA Web address:**

[www.shopmyexchange.com/community/area](http://www.shopmyexchange.com/community/area)

## ***YOUR AAFES BENEFITS...***

# Keep Your Health Records Easily Accessible!

*Advance planning's a necessity when storm warnings become storms*

The 2012 hurricane season runs June 1 and runs through November 30. It is important to be prepared for disasters such as hurricanes, floods, and fires. Advance planning helps members prepare for their health and benefits needs before a natural disaster strikes. Natural disasters can happen fast and without warning. If you or a family member were hurt or had to flee from your home, would you know how to use your health benefits? Spend a little time gathering your health history and benefits information and store your health information in one place.

Aetna's Personal Health Record (PHR) provides you with secure, online access to important information about your health 24/7. Your PHR automatically collects information such as prescriptions, doctor visits, lab work, and creates a personal record for you. You can also add information to your PHR such as over-the-counter medications you may be taking or new conditions. To access or create your PHR, log in to Aetna Navigator, your secure member website, found at [www.aetna.com](http://www.aetna.com).

Also, a featured article called "Protect Your Health during Natural Disasters," can be found on Aetna's website at <http://www.planforyourhealth.com/family-life/article/show/protect-your-health-during-natural-disasters> for additional information. Prepare, plan and stay informed!



### **Look for an Aetna approved Specialist with the Aexcel Designation**

Do you know what the Aexcel Designation is in health care? It's a way for you to get access to some high performing specialty doctors and doctor groups who are:

- Part of the Aetna network
- Have met industry-accepted practices for clinical performance
- Have met Aetna's efficiency standards
- Specialize in any of these 12 specialty areas: Cardiology, cardiothoracic surgery, gastroenterology, general surgery, neurology, neurosurgery, obstetrics and gynecology, orthopedics, otolaryngology/ENT, plastic surgery, urology, vascular surgery.

These specialists have been chosen for their performance in meeting high standards of care and because these specialists are more cost conscious in their practice, you get both quality care and value at no additional cost to you. You pay the same copay as you would any other specialist within Aetna's network.

Here's how you find Aexcel-designated specialists in your area:

- Log into [aetna.com](http://aetna.com)
- Select *DocFind* and select a specialist and zipcode
- In your search results, look for a blue star that indicates Aexcel-designated specialists

For more information about Aexcel-designated doctors, contact Aetna member services at the telephone number on the back of your insurance card.

## YOUR AAFES BENEFITS

### AAFES Benefits Q & A

The AREA Newsletter and the Exchange Benefits staff provide a quarterly forum to answer questions you may have concerning your benefits. Below are the answers to recent questions received from AAFES retirees:

*Q. I sometimes have questions about my medical coverage and other benefits and would like to know who to contact to discuss them.*

A. Retirees can call the benefits department at 1-800-519-3381 from 0900-1500 hours (CST) Monday through Friday. You can also email the benefits staff at [benefits@aafes.com](mailto:benefits@aafes.com).

Other important numbers:

DoD NAF Medical & Dental (Aetna): 1-800-367-6276

Managed Disability (Aetna): 1-800-644-2386

Long Term Care (Prudential): 1-800-732-0416

Long Term Care (Aetna): 1-800-537-8521

401(k) (Fidelity Investments): 1-800-835-5098

*Q. Charges for an annual physical (wellness) exam and an annual eye exam are indicated as being 100% covered. If you have any pre-existing condition for which you've seen the doctor before, however, there will undoubtedly be some insurance code placed on your claim by the doctor's office indicating a medical finding and the exam is then not considered "routine." This then makes the patient responsible for a fair amount of the charges. For us at this stage of the game, there will never again be such a thing as a "routine" annual checkup.*

A. Routine physical exams with your doctor are critical for your family's health. The DoD NAF plan covers physical exams and associated tests and screenings at 100% provided your physician codes the exams as preventive care. Earlier this year, you should have received a postcard from Aetna that included a preventive care timeline and a tear off card that you can present to the office staff when you have your next physical exam.

If you have pre-existing medical conditions, it may be necessary for you to see your physician for these conditions separately if it is the practice of his office to code these conditions as anything other than a wellness exam. This will allow for a no cost wellness exam and the ability to earn a \$50 Health Incentive Credit for having the exam!

*Q. How do I find out what eyewear companies in my area accept our medical coverage?*

A. One of the major preventive care health benefits offered in the Department of Defense (DoD) Nonappropriated Fund (NAF) medical plan is a yearly routine eye exam. Preventive services are available at **no cost to you**, through the Aetna Preferred Provider Organization (PPO) and Traditional Choice (TC) plans to help detect and prevent illnesses.

The medical plan also gives you a reimbursement for **prescription eyewear**. This includes lenses, frames, and contacts. Purchase your eyewear **anywhere** and submit a claim for reimbursement. Maximum reimbursement is up to **\$150 per person** per calendar year. In addition, you are eligible to use Aetna Vision Discounts.

Log on to Aetna Navigator at [www.aetna.com](http://www.aetna.com) to look for more information on Aetna discounts (under Coverage & Benefits) and to obtain the form for prescription eyewear reimbursement.

Mid-year update from the Chief Operating Officer

Exchange continues to bring customers widespread in-store, E-commerce improvements

By Mike Howard Chief Operating Officer

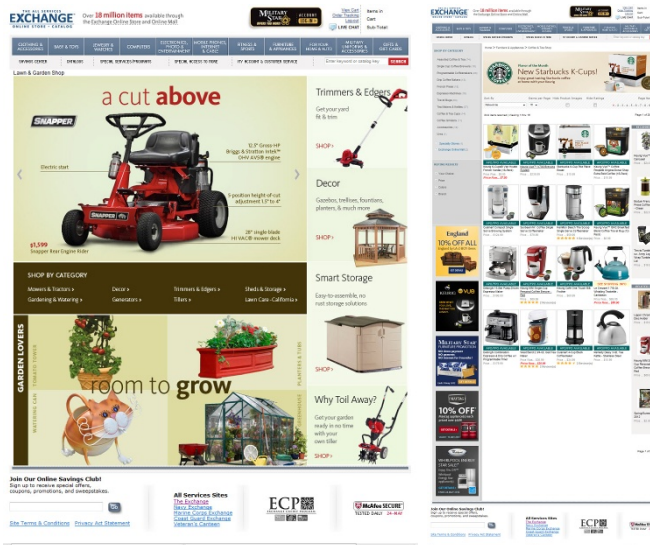
It's only been six months since my last update about the Exchange, but in those 180 days a lot has happened. I'm pleased to bring you the latest changes in operations, new concepts and some initiatives that we've introduced to bring the latest ideas come alive for our customers.

E-Commerce Upgrade Project

Our eCommerce Upgrade program is still on target to be fully implemented by late 2014. Our plan for the future is to provide an enhanced customer shopping experience, increase target marketing opportunities and promote the perception of "One Exchange" across all channels to our internal and external customers. We plan to provide what our customers want, when they want it, and how they want it. To meet our commitment to sell goods and services that improve the quality of life of Soldiers, Airmen, and their families, the Exchange must fully understand what they value and anticipate their wants and needs.

Last year we told you how optimizing our merchandise images was high on the priority list and we had zoom capability and expanded product videos to showcase our products in the pipeline. We have completed those projects and introduced them to our customers! Next up is beginning the process of moving the web-site login once the customer gets to the shopping cart.

This will align us with other major retailers and industry best practice. In addition, we will be introducing a streamlined and updated site search and navigation features which will allow our customers to locate products more quickly.

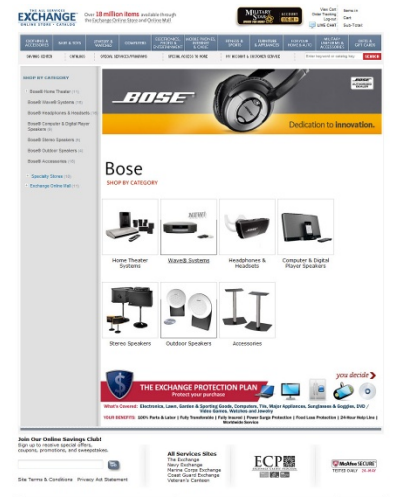


Tabloid Updates

A new concept for ONLINE ONLY products is in the works. This four-page spread will fold into the weekly tabloids once a month and be filled with Online Only merchandise. This concept will remove "online only" merchandise from the rest of the tab although items that are available in both the store and on the web will remain in the regular tabloid section. This will allow our customers to more easily identify those items which are ONLY available online.

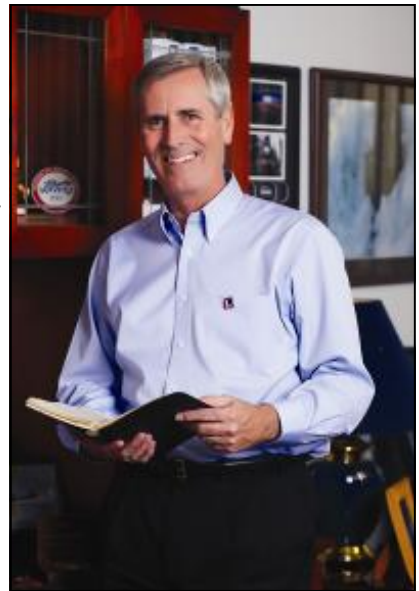
Specialty Shops

In an effort to enhance our customers' shopping experience, we have created several new specialty shops. Customers can now find all Bose products grouped together where they can shop by category. The same is true with our new Coffee and Tea shop and our Lawn and Garden shop. As the need arises, new shops will be created for our customers.



**Sales Growth in Snack Avenues, Express stores**

SD is excited about the growth in sales in our Snack Avenues and Express stores. The Exchange is striving to offer more fast and fresh food selections to our customers to drive the business. Customers are constantly on the go and delivering fast “grab-and-go” food options is paying off. In support of this trend, we recently launched a test pilot for island coolers in our Express stores. These coolers, such as those seen in convenience stores like QT, Race Trac or 7-11, offer healthier options such as salads, humus, fresh fruit and juices, boiled eggs and more and bring these option together in a convenient location. By focusing on healthier food options for our customers, we are delivering a quick and healthy meal solution. Initial results have been favorable with a 26% lift in sales for items included in the island cooler.



**Mike Howard, COO**

In Softlines, we are making strides to connect with our customers with several new programs. Our new pricing strategy will increase the relevance of the Exchange by making Children’s apparel a destination department. New simplified pricing will improve customer perception of pricing as unquestionably the best value. We are implementing price points of \$5, \$10, 2 for \$15, \$15, and \$20 across all of children’s apparel. This simplified pricing strategy will reduce markdowns and improve margins while communicating a message of great savings to the customers.

We will continue with the introduction of new Softlines trend books. These catalogs communicate the hottest trends for the season and feature key items that coordinate between apparel, footwear, jewelry and fragrances.

Our trunk shows bring extra flair into the stores. This initiative allows our smaller stores access to hot fashion trends without the inventory investment of a larger store. Brands not normally featured in our small stores are rotated in for a short time in order to bring freshness to the sales floor and excitement into the departments. This program increases sales, while maintaining solid margins.

Also in our Softlines, we have recently implemented our set sell planner. This is a guide to assist stores and buyers with merchandising of product in the stores. The customer benefits by seeing fresh new product in the departments as displays feature the newest fashion trends. This program optimizes selling space, increases inventory turns, reduces markdowns, and improves profit margins.

Another new initiative, which began in 2011, and is going forward into 2012, is the implementation of Scan Based Trading. The Exchange will be able to shift ownership of store inventory to the supplier until sold through the register. Benefits from this program are increased in-stocks, improved turns, and increased sales and margins.



**Ft. Benning Road Show with images of new children’s pricing strategy**





As we all know, retail is a competitive industry. Retailers continually struggle to maintain and gain market share and to improve earnings. Logistics works hard to add value to the process, to move product better, cheaper, and faster to help the organization gain competitive advantage and to reduce expenses. LG is collaborating across the planning and management of all Exchange activities involved in sourcing, procurement, conversion, and logistics processes, as we drive to link the major business functions and business processes into a cohesive and high-performing business model.

### Supply Chain Visibility

- Supply Chain Visibility plays a key role in operational excellence and customer satisfaction
- The necessity to track thousands of orders moving within or through the supply chain.
- The initial phases focused on internal corporate data that already existed but was fragmented throughout many reports and systems.
- New tools/reports were developed maximizing internet technology and providing users with the flexibility needed for viewing, searching, and exporting.



### Stockroom Council Program

After surveying stores, managers expressed interest in the development of a Stockroom Council. The active participants are selected stockroom managers, logistics liaisons to SD, transportation managers, and industrial engineers. Topics for discussion were stockroom operations and stockroom design. Store and DC visits are a part of the program.

### Support Programs

- LG Supply Chain Team Combined effort working on supply chain issues from a developmental, operational, and strategic point of view. This was accomplished by merging the LG Liaison team (Logistics experts embedded in Softlines, Hardlines and Specialty Store divisions) with the Economic Analysis team and Industrial Engineers to establish early collaboration with Exchange operational elements. This will minimize downstream disruptions and increase the optimization and flow to stores and ultimately to the customers. Chief objective is to further reduce costs to the Exchange supply chain.
- Partnering with Sales Directorate to increase and improve supply chain initiatives throughout Asia for fine furniture, private label sportswear, and private label electronic accessories.
- Added key furniture SKUs located in Japan to reduce pipeline and inventory carrying cost.
- Plan-O-Gram Project – Map current processes of different POGs
- A “Review Day” Project – to optimize outbound delivery to stores
- Red Prairie Implementation Support – SEDC WMS conversion, WCDC Work Force Management development





**Travis AFB Brand Opening**

The Travis Brand Opening was celebrated on May 4, 2012 as shown in these four photos. Opening ceremonies were held in front of the store at 0900 led by the Exchange Commander, Brig Gen Fran Hendricks. Then the moment everyone was waiting for...the ribbon cutting which represented the official end of the renovation that had been ongoing for the past eight months. Once the ribbon was cut, the store was quickly filled by shoppers eagerly looking for the Brand Opening specials as well as to see the end result of the renovation that they had been shopping around since last September. Everyone was impressed with the results and only positive comments were heard.



Throughout the weekend, customers were treated by numerous vendor appearances, demonstrations, sampling and give-a-ways. Drawings were set up throughout the store, with hourly drawings held in addition to grand prizes. The numbers back up the crowd's approval with sales increases of more than 50% over prior year for the three-day event.

This is the second branded shopping center for the Exchange (Tinker AFB was the first). The Travis main store has the complete branded concept, to include the home, life and style sections in the new V-layout. The rebranding effort, which is being rolled out to all Exchanges, is designed to provide shoppers with a fresh, updated shopping experience for all the things they need to outfit their unique lifestyle. Combining lively colors and imagery, bold shop design statements, polished floors and a new way to navigate through the store, the concept provides Exchange customers with a best-in-class shopping experience.



**Image Updates**

The Exchange has strategically aligned its capital program to coincide with the reduced Military Construction (MILCON) budget and military stationing uncertainty. The capital program was adjusted to support a primary mission of sustainment and repurposing facility assets to increase dividends with a reduced emphasis on growth. The Image Update program addresses this focus and is also consistent with current industry trends to maintain, update and reuse existing stores versus new construction as well as the military initiative of sustainment and reuse.



The Image Update Program modernizes facilities to reflect the latest retail, food and services standards to include replacement of fixtures, furnishings and equipment. New fixtures are incorporated into the store departmental layouts to allow more efficient merchandising and easier shopping. Image Updates can now be completed quicker and more economically, often in six to nine months, which allows stores to get back to full sales and service sooner than ever before. Recently completed Image Updates include Exchanges at Travis AFB, CA, Ft Bragg, NC, and Westpoint, NY. Upcoming openings include Tyndall AFB, FL, Mountain Home AFB, ID, Presidio of Monterey, CA, and Sheppard AFB, TX.

## A BANNER YEAR:

## AREA awards 19 students \$47,000 in Scholarships for 2012

This year AREA awarded scholarships totaling \$47,000. Although the Board initially approved twelve scholarship awards earlier in the year, it was obvious during the evaluation process that there were more than twelve deserving applicants. The Scholarship Committee asked the board to approve seven additional awards. The board unanimously endorsed the proposal. We were able to award scholarships to nineteen of the twenty-five qualified applicants. I am proud to tell you that awards totaling \$522,795 have been made to 273 deserving students since the AREA scholarship program began in 1985. A brief recap of awardees' accomplishments and aspirations is shown on pages 11-15.

This was another banner year for the AREA Scholarship Program. With forty applications received and twenty-five of those meeting AREA criteria, 2012 was one of the highest participation rate campaigns since the program began. Having said that, I would be remiss if I failed to mention how funds have been and continue to be made available for this outstanding "AAFES Employee-Oriented" program. The program garners support from both industry partners and from many within our own ranks who choose to recognize loved ones with a donation to the AREA Scholarship fund. Industry support and individual donations are key factors to the program's past and future success.

Here's a brief description of how the program worked this year. First, each application was screened to assure minimum requirements were met. After meeting the "AAFES Employee, Son or Daughter" and minimum academic criteria, each application was given a unique number to track it as it moved through the process. The files were then sent to seven scholarship

committee members for review. Each member scored and ranked the files against five criteria:

Academic honors and achievement, School Activities, Outside of School Activities, Letters of Recommendation and An Essay Themed on "...Why I deserve this scholarship..." All scores were aggregated and an award roster finalized. After that, the roster and committee recommendations were forwarded to Chuck Poffenbarger, AREA President. Chuck in turn sent the packet to AREA BOD members for consideration. BOD members reviewed the recommendations and by vote approved the twelve basic and seven additional awards. Chuck then sent scholarship notification letters to each recipient.

Applicant academic standing was exceptional again this year. All applicants, including those not meeting AREA's minimum scholarship requirements, should be proud knowing they reflect great credit on themselves and the families supporting them. Obviously I was impressed with the high quality of each applicant but more importantly, committee members were also impressed. This year the evaluation committee was again made up of volunteers taking time to apply exceptional judgment to the evaluation process. I personally thank Jim Sawyer, Maggie McGee, Vivian Skalsky, Richard Sheff, Darryl Richards, Don Smith and Mat Dromey for an outstanding effort again this year.

And finally, don't forget about next year. If you know a qualifying student entering his or her first college semester in 2013, make sure they review our Scholarship Program at <http://www.shopmyexchange.com/Community/AREA>



Regards,

Thomas Gallagher  
Director, AREA Scholarship Program

**AREA loves to award  
scholarships to  
deserving students!!!**

# TWO WIN \$5,000 AREA SCHOLARSHIPS

## Kristi Tamberrilli awarded \$5,000 Marilyn Iverson Scholarship

**KRISTI TAMBERRILLI.** Kristi, the daughter of Lou and Kerri Tamberrilli, is the recipient of the 2012 Marilyn Iverson Memorial award. This \$5,000 endowment is given to the top AREA scholarship recipient for outstanding academic achievement and community involvement.

This fall Kristi enters the University of Texas at Austin School of Business seeking a degree in Business Administration. During her career at Creekview High School in Carrollton, Texas, Kristi distinguished herself in many areas, but law seemed to be her forte. She competed in mock trials and placed 2nd in both state and regionals.

She was nominated to be featured in the Dallas Morning News article about outstanding students in the DFW area, was a member of the National Honor Society and found time to Co-Captain her High School volleyball team, vol-



**KRISTI TAMBERRILLI**  
\$5,000 Marilyn Iverson  
Scholarship Award

**Parents:**  
Lou & Kerri Tamberrilli

**High School:**  
Creekview HS  
Carrollton, TX.

**Career Interest:**  
Business Administration

unteer in a local Soup Kitchen and at her church, she babysat children in the nursery and participated in several church-sponsored mission trips.

## Angeline Huggins receives \$5,000 AREA award



**ANGELINE HUGGINS**  
\$5,000 Scholarship Award

**Parents:**  
Barry Huggins & Janet Kennedy

**High School:**  
Martin HS, Arlington, TX.

**Career Interests:**  
Business Administration

**ANGELINE HUGGINS.** Angelina is the daughter of Barry Huggins and Janet Kennedy. She was awarded a \$5,000 AREA Scholarship, and will enter college this fall seeking a degree in Business Administration.

During her time at Martin High School in Arlington Texas, she was a member of the Distinguished Graduate Achievement Program and a member of the French National Honor Society.

Angelina was an active member of her HS Theatre Arts Group, the Choral team and the Junior World Affairs Council. Outside of school she volunteered as a translator for Russian orphans at a local adoption agency, volunteered in the Arlington, Texas Mission and volunteered as the 4th grader volleyball coach at the local YMCA.

**LAUREN EGAN.** Lauren, the daughter of Brian and Carol Eagan, received a \$3,000 AREA scholarship award. As Lauren enters college this fall she will be seeking a degree in Chemical Engineering.

In her time at Highland Park High School in Dallas she was a member of six National Honor Societies and acted as the Treasurer of the Science Nation Honor Society. She also served as Senior Editor for the Highland Park yearbook and was a member of the Highland Belles drill team when it won national and state championships. Lauren was active in her community as well. She volunteered as a Vacation Bible School teacher, was a member of a Congressman's leadership and growth program and was treasurer and an active member of the National Charity League.



**LAUREN EGAN**  
\$3,000 Scholarship Award

**Parents:**  
Brian & Carol Egan

**High School:**  
Highland Park HS  
Dallas, TX.

**Career Interests:**  
Chemical Engineering

**JESSY PRICHERTT**

\$3,000 Scholarship Award

**Parents:**

William &amp; Sharon Linnartz

**High School:**Crest Ridge HS  
Centerville, MO.**Career Interest:**

Business Management

**JESSY PRICHERTT.** As Jessy enters college this fall he will be seeking a degree in Business Management. Jessy, the son of William and Sharon Linnartz, received a \$3,000 AREA scholarship award.

While attending Crest Ridge HS in Centerville, Mo, Jessy distinguished himself both scholastically and athletically. He was listed on the Principal's Honor Roll and honored for attaining 99% on his MAP scores.

On the athletic side, Jessy lettered and captained the football team and earned letters in basketball and track at Crest Ridge HS. Outside of school, Jessy volunteered at a local food kitchen, acted as an usher at his church and volunteered as a referee of a youth football league.

**MHAIRI TERRA**

\$3,000 Scholarship Award

**Parents:**

John &amp; Catherine Terra

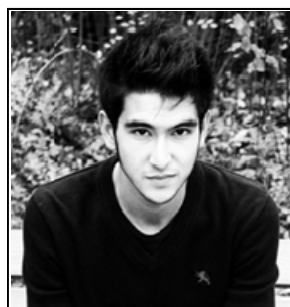
**High School:**Wiesbaden HS  
Wiesbaden, GE.**Career Interest:**

International Studies

**MHAIRI TERRA.** Mhari, the daughter of John and Catherine Terra, received a \$3,000 AREA scholarship award. She intends to use that award to pursue a career in International Studies as she begins her college career this fall.

Mhari, while at Wiesbaden HS in Germany, was a four year honor roll member. She distinguished herself academically by receiving the American Legion Scholastic Medal, and scoring a perfect five on both the AP US History and Language and Composition exams.

On the athletic field, Mhari lettered in track, cross country and softball. In her spare time she volunteered at an Alzheimer's care center and at the Wiesbaden Army community center.

**EVAN ALARILLA**

\$3,000 Scholarship Award

**Parents:**

Moreno &amp; Sema Alarilla

**High School:**Wiesbaden HS  
Wiesbaden, GE.**Career Interest:**

Civil Engineering

**EVAN ALARILLA.** Evan enters college this fall in pursuit of a Civil Engineering degree. Evan, recipient of a \$3,000 AREA scholarship award, is the son of Moreno and Sema Alarilla.

While attending Wiesbaden HS in Germany, Evan was recognized as a National HS Scholar, received an AP Scholar award and was a member of the Nation Honor Society. He was also recognized for his athletic prowess when he received the Wiesbaden HS Tennis MVP award, a team he captained for the four years he attended Wiesbaden HS.

Away from school, Evan donated his time at the MWR youth center teaching soccer and tennis and spent time performing at local events as an accomplished guitarist.

**ERICA RIPLEY**

\$3,000 Scholarship award

**Parents:**

William &amp; Paula Ripley

**High School:**Lakenheath HS  
Lakenheath, GB.**Career Interest:**

Chemical Engineering

**ERICA RIPLEY.** Erica is the daughter of William and Paula Ripley. With a \$3,000 AREA Scholarship in hand, Erica enters college this fall seeking a degree in Chemical Engineering.

Erica is a recipient of several awards while attending Lakenheath HS in Lakenheath England. Four years in a row she was recognized as a Commander's All-Around Performer, was listed on the Principal's Honor Roll and was a member of the National Honor Society. She was the president of the Student-to Student program, Future Educators Association and the National Honor Society chapter at Lakenheath High School.

She captained her HS tennis team as well as the softball team. Outside of school, Erica volunteered as a Peer Tutor and worked with the on-base chapter of the Red Cross.



**KASSANDRA STILLWELL**

\$3,000 Scholarship Award

**Parents:**

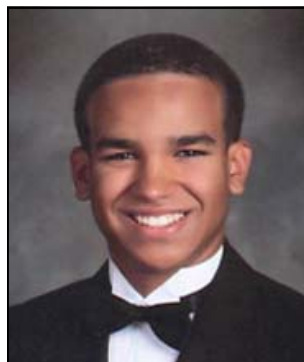
Kenneth & Kimberly Stillwell

**High School:**

New Egypt HS  
New Egypt, N.J.

**Career Interest:**

English Concentration



**KRISTOFER XAVIER HOLGUIN**

\$3,000 Scholarship Award

**Parents:**

Freddy & Norma Holguin

**High School:**

Niceville HS  
Niceville, FL.

**Career Interest:**

Computer Engineering

**KASSANDRA J. STILLWELL.** Kassandra received a \$3,000 AREA scholarship award. As she embarks on her college career this fall, Kassandra intends to use that award to pursue a career in Secondary Education with an English concentration.

Kassandra, the daughter of Kenneth and Kimberly Stillwell, has been recognized with the "Student of The Month" scholastic award from her HS and was a member of the National Honor Society during her time at New Egypt HS in New Egypt NJ. She was also an active participant in school-related activities: She was a student government representative, served on the yearbook staff and was a varsity starter and captain of both her HS Soccer and Lacrosse teams.

**KRISTOFER XAVIER HOLGUIN.** Kristofer, the recipient of a \$3,000 AREA scholarship award, is the son of Freddy and Norma Holguin. He enters college this fall pursuing a degree in Computer Engineering.

Kristofer attended Niceville HS in Niceville, Florida. While there, he was given the "Anne T. Mitchell Award" for achieving a GPA weighted average above 4.0 and was recognized with the "FCAT Outstanding Distinction Math/Reading/Writing". In his HS years, Kristofer was a National Honor Society member, a member of the Key Club and a member of the Service International Club. Outside the HS setting, Kristofer was a volunteer at the Eglin AFB youth center and acted as president of the "Youth Corps Leadership/Community Service Group" at the air base.

**MICHELLE YI**

\$3,000 Scholarship Award

**Parents:**

David & Junei Yi

**High School:**

Coppell HS  
Coppell, TX.

**Career Interest:**

Computer Animation



**MICHELLE MUNDT**

\$3,000 Scholarship Award

**Parents:**

Gary & Jacque Mundt

**High School:**

South Jefferson HS  
Adams, N.Y.

**Career Interest:**

English

**MICHELLE YI.** Michelle is the daughter of David and Junei Yi. Having been awarded a \$3,00 AREA Scholarship,

Michelle enters college this fall seeking a degree in Computer Animation. During her HS career at Coppell HS in Coppell Texas, Michelle lit up the boards with art-oriented awards: On two occasions she received "Texas Visual Art Scholastic Medals" (statewide award), was a Congressional Art Competition winner and took 1st place in the NE Tarrant County Art Contest and 1st place in the Young Masters art competition. Michelle was member of the National Art Honor Society, acted as the coordinator of her HS' "For the Children Club" and volunteered as a substitute teacher for a children's art class.

**MICHELLE MUNDT.** Michelle enters college this fall seeking a degree in English. Michelle, the daughter of Gary and Jacque Mundt, received a \$3,000 AREA scholarship award.

During her time at South Jefferson HS in Adams, NY, Michelle was a member of the National Honor Society, received the New York State Music Association Award and was recognized as Student of the Month.

She was a member of the Key Club, an active member of the South Jefferson HS "All State" Chorus and was chosen to be a member of its' Swing Chorus. She also ran track for her HS. In that endeavor she garnering the All Northerner Athletic Conference Award.



**JOSEPH E.M. BUSSIERE**  
\$3,000 Scholarship Award

**Parents:**  
Thomas & Barbara Bussiere

**High School:**  
Parkway HS  
Bossier city, LA.

**Career Interests:**  
Kinesiology

**JOSEPH E.M. BUSSIERE.** Joseph, the recipient of a \$3,000 AREA scholarship award, is the son of Thomas and Barbara Bussiere.

As Joseph enters college this fall he will be pursuing a degree in Kinesiology.

Joseph spent his HS career at Parkway HS in Bossier City, LA. In his time there, he was listed on the Honor Roll and was a member of the French Club. Joseph also distinguished himself as an award winning HS athlete. He was a varsity wrestler and a member of the varsity football squad. He was selected to the 1st Team All Region-Wrestling squad and earned an award as State Runner Up For Wrestling.



**KEDEMAH EVANS**  
\$1,000 Scholarship Award

**Parents:**  
Ebed & Tiffany Evans

**High School:**  
Irma Rangel Womens  
Leadership HS  
Dallas, TX.

**Career Interest:**  
Intl Relations & Music

**KEDEMAH EVANS.** Kedemah received a \$1,000 AREA scholarship award. She intends to use that award to pursue a career in International Relations and Music.

Kedemah, the daughter of Ebed and Tiffany Evans, attended Irma Rangel Womens Leadership High School in Dallas Texas.

While in HS, she received awards for: AP Scholar, Woman of Valor and Leadership. Kedemah was a member of the International Book Club, the Key Club, the GEO Club and served on the student council.



**JOHN NORTON**  
\$1,000 Scholarship Award

**Parents:**  
Gerlad & Lynn Norton

**High School:**  
Ayer Shirley HS  
Ayer, MS.

**Career Interest:**  
Engineering

**JOHN NORTON.** John, recipient of a \$1,000 AREA scholarship award, is the son of Gerlad and Lynn Norton. He enters college this fall as an Engineering major.

During his time at Ayer-Shirley HS in Ayer Massachusetts, John was a member of the National Honor Society, received the "Spanish IV Honors" award and was recognized with the St. Michael's College Book Award.

John also represented his HS as a "Destination Imagination Tournament" volunteer and on the athletic field as a member of the track and field and cross country teams.

Away from the classroom, John gave back to his community by volunteering at a local senior center, participating in the "Walk For Breast Cancer" fund raiser and tutoring middle school trumpet students.



**HEATHER MARIE DINGWELL**  
\$1,000 Scholarship Award

**Parents:**  
Davie & Lynn Dingwell

**High School:**  
Southview HS  
Hope Mills, N.C.

**Career Interest:**  
Nursing

**HEATHER MARIE DINGWELL.** Heather is the daughter of David and Lynn Dingwell. Having been awarded a \$1,000 AREA Scholarship, Heather enters college this fall seeking a degree in Nursing.

Heather attended Southview HS in Hope Mills, NC. During her HS career, Heather was a member of the National Honor Society, a member of the Academically Gifted program, listed on the Honor Roll and was a member and secretary of "HOSA".

Heather represented Southview HS as a member of its' varsity soccer team and varsity volleyball squad. She gave back to her community by donating time as a classroom volunteer and at her church she participated as a nursery volunteer.



**DEVANTE JEMAHL OWENS**

\$1,000 Scholarship Award

**Parents:**

Christopher & Sun Owens

**High School:**

Ben Eielson HS  
Eielson AFB, AK.

**Career Interest:**

Petroleum Engineer

**DEVANTE JEMAHL OWENS.** Devante, recipient of a \$1,000 AREA scholarship award, is the son of Christopher and Sun Owens. He enters college this fall as a Petroleum Engineering major.

He attended Ben Eielson HS on Eielson AFB Alaska. While attending HS, Devante was listed on the Honor Roll, was selected as Student of the Month, won the "PTSA Reflections Award" - a statewide art competition and placed 3rd in the "Poetry for Spanish Declamation" competition.

Devante was a member of his HS soccer and tennis teams and away from school, volunteered as an "After School Tutor".



**GREGORY CERVENKA**

\$1,000 Scholarship Award

**Parents:**

Greg & Patricia Cervenka

**High School:**

Bishop Dunne Catholic HS  
Dallas, Texas

**Career Interest:**

Biology/Pre-Med

**GREGORY CERVENKA.** Gregory, recipient of a \$1,000 AREA scholarship award, is the son of Gary and Patricia Cervenka.

He enters college this fall seeking a Biology/PreMed degree.

During his time at Bishop Dunne Catholic HS in Dallas Texas, Gregory was listed on the Honor Roll, received an AP Scholar award and garnered the "Texas Association of Private and Parochial Schools Competition Award". He was a member of the Ecology Club, the Texas Association of Private and Parochial Schools Club and a member of his HS Advanced Strings Group as a violinist.

After school he volunteered at both the Bishop Dunne Catholic HS and the Red Oak Community libraries.



**CARL WU**

\$1,000 Scholarship Award

**Parents:**

Wilson & Joy Wu

**High School:**

Plano Senior HS  
Plano, Texas

**Career Interest:**

Aerospace engineering

**CARL WU.** Carl received a \$1,000 AREA scholarship award. As he embarks on his college career this fall, Carl intends to use that award to pursue a career in Aerospace Engineering.

Carl, the son of Wilson and Joy Wu, attended Plano Senior HS in Plano Texas.

In HS, Carl was a member of the National Honor Society and served as an officer on the Student Congress. He represented his HS as a drummer in the HS marching band and in fact was selected as "Best Marcher" in his freshman year.

Carl gave back to his community by donating time as a church volunteer and volunteering as a counselor at a community sponsored youth camp



**CODY OLIVARES**

\$1,000 Scholarship Award

**Parents:**

Adam & Lisa Olivares

**High School:**

Cedar Hill Collegiate HS  
Cedar hill, Texas

**Career Interest:**

Biology/Pre-Med

**CODY CHRISTOPHER OLIVARES.** Cody, the recipient of a \$1,000 AREA scholarship award, is the son of Adam and Lisa Olivares.

He enters college this fall pursuing a degree in Biology/PreMed.

Cody attended Cedar Hill Collegiate HS in Cedar Hill Texas. While in HS, Cody was a National Merit Hispanics Scholar, a member of the National Honor Society, the Phi theta Honor Society and the National Society of High School Scholars.

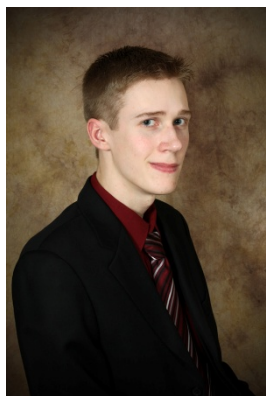
He was a member of the Soulful Dreams Club and the Games Club and volunteered over 260 hours through the Cedar Hill Booster Club. He helped paint a woman's safe house as part of a church group, and volunteered at the local "Care For Animals" animal shelter.

## How does a scholarship winner feel after a year at school?

I am writing again to mark the successful completion of one academic year and the joyful anticipation of new collegiate adventures. My freshman year at the University of Rochester was illuminating, invigorating, and just plain fun! And I have you to thank. With scholarships from organizations such as yourselves, all of my educational expenses from tuition to snacks, housing to stamps, for my first year were completely covered, facilitating a far less stressful university experience.

I can honestly write that the excitement I felt from first opening the door to my dorm maintained its record levels until my very last final exam. With excellence as my goal, I made rigorous progress on my Chemical Engineering degree, claiming top marks on midterms and proudly receiving Dean's List distinction with a perfect 4.0 GPA. My apparently latent, recently discovered aptitude in chemistry has manifested itself in the 'Freshman Chemistry Achievement Award' and, after a highly selective process, a position as a Teaching Assistant (TA) for General Chemistry this coming year.

Now don't get me wrong, I relished every moment of every lecture and even the late nights diligently completing essays and problem sets; however, we all know what college truly about. Within days of arriving on campus, I found myself an active member of the Catholic Newman Community and greatly appreciated the ability to continue my passion for oboe in the church choir. I've grown so attached to the group's sense of camaraderie that I ran for and was elected as a member of its e-board, Steering Committee. Swing dancing was an extracurricular that also swept



2010 Scholarship Winner  
**PAUL GABRYS**  
\$5,000 Marilyn Iverson  
Scholarship Award

Parents:  
Bruce & Theresa Gabrys

High School:  
Chugiak HS, Chugiak, AK.

Career Interest:  
Chemical Engineering &  
Music Performance

me off my feet, quite literally. Regularly attending dances in the community surrounding the university has greatly augmented my knowledge and admiration of Rochester as a city. Not to mention, the ladies love a man who can dance.

While fall found me once in Niagara Falls and spring in New York City, summer found me back on a commercial salmon

fishing boat in Cook Inlet. Alaska flooded back into my life again with one of the most physically grueling salmon runs in years. Hopefully, my crew share from this summer's employment will alleviate a significant amount of my financial burden this coming semester, not to mention provoke some admiration from my peers upon learning about my "Deadliest Catch" job.

This year's worth of memories and experiences lead me to one point. I await the ivy-covered red brick of UR with even greater euphoria than before, and this time, with much less anxiety. I am continuing a journey into the boundless future of knowledge and growth that you assisted me in beginning exactly one year ago with your amazing generosity. I pray you continue to support students like myself on their path to endless opportunities. Your impact on the lives of young people is immeasurable.

*"Don't tell me the sky is the limit when there are footprints on the moon."*-Author Unknown

With sincerity and gratitude,

Paul Gabrys,  
2010 Scholarship Recipient

### ALA's DFW Chapter provides major funding for AREA Scholarships



The members of the DFW Chapter of The American Logistics Association are very pleased that we can offer some assistance in supporting scholarship funds for AREA. The chapter conducted a Christmas Party in the fall in which members of the DFW ALA Chapter donate gifts that are used for auction items. In 2011, we donated \$22,000 to the AREA Scholarship Fund, which was used to fund the 2012 awards. In 2006, our chapter created a special scholarship named in the honor of Marilyn Iverson, AAFES-COO from December 2002-October 2006. Since then, we have annually funded this special scholarship with \$5,000. Congratulations to Kristi Tamberrilli for winning this year's Marilyn Iverson Scholarship Award.

Thank you, AREA, for allowing our organization to take part in this most valuable scholarship program. We look forward to equal or greater contributions in future years.



# The Japan 'Old Hands' return to Las Vegas

But there was something different—Harrah's this year

The Japan Old Hands Group\* had to move their annual meeting in Las Vegas from Bally's to Harrah's Hotel this year since Bally's was booked up with a convention. But that didn't stop the 22 attendees from having their usual fun time again this year from May 7-10.

We met for breakfast every morning in the hotel coffee shop where we took over a corner and spent about two hours each morning rehashing old times.

The first evening we went back to Makino's Japanese Buffet, and we are glad to report they have kept up their standards—delicious as usual.

Ann Brogan arranged a nine-course banquet in Chinatown for the next evening. All left holding their stomachs! We left the third night open for those wanting to see a show. Some went to the old California hotel downtown for their delicious prime rib for only \$9.99.

This meeting has become much loved for its chance to spend some time with old friends to relive the "good old days" in Japan.

**--Tim Brogan**

\*The Japan Old Hands Group includes the 8<sup>th</sup> Army Central Exchange, Far East Exchange System, JAKOR and Japan Central Exchange —the same organization under different names.



Paul Koban, Jim Yamamoto, Naomi Fazenze, Ineko Seese, Jane Ota



Tom Ige, Ann Brogan, Helen Ige, Paul Hiroshima, Dick Janes



Roy Ota, Jane Ota, Ineko Seese, Naomi Fazenze and Jim Yamamoto



# CHAPTER HAPPENINGS

**Alamo Chapter**—The Aloha Chapter held it's spring luncheon on Sunday, 20 May. Some 30 members and guests were greeted at the door by **CHARLOTTE ROACH**, wife of chapter president, **PHILIP ROACH**. A large and varied Chinese Brunch was enjoyed at Yen King's Maple Garden - one of the groups favorite locations. **JANE FUKUNAGA**, a past officer of the Chapter and regular attendee/supporter, welcomed the group. After 3 or 4 passes by everyone around the buffet table a very successful bake and plant sale was conducted with the ever smooth talker **LESTER TOKUHISA**, cajoling the wallets to open. Making it a family affair his wife, **MARLENE**, raked in the money. The chapter's next scheduled luncheon will be held in August.



Bea Shiroma and Linda and Milton Shimizu

—Bill Allgire



Lester and Marlene Tokuhisa, Nancy Takiguchi, Buda Ishihara

Dot Irvine, Roy Miura and Ardell Katsura



Jane Fukunaga, Pat Watson, Mary Ann Asato and Bea Shiroma



Rose Kawata, Adrienne Hamada and Jane Fukunaga



Lani Aki, Julia Davis, Phil Roach



Sueko Paragas, Frances Saito, Elaine Takahashi and Julie Conner



Charlotte Roach, Allyson and Wilton Santos

# CHAPTER HAPPENINGS

**Golden Gate Chapter**—The Golden Gate Chapter continued its series of monthly luncheons in June with a visit to the beautiful Creekside Grill, located next to the golf course in Rossmore Community, Walnut Creek, CA. Show below are the six photos from the Creekside Grill luncheon. In addition, the chapter ate lunch at the Pacific Blues Café in the heart of the Napa Valley Wine Country at Yountville, CA, on May 2, for an Apr 4 lunch at Trader Vic's, Emeryville Marina, Emeryville, CA and a March luncheon at the Hilltop 1892 Restaurant in Novato, CA. Selected photos taken by Ernie Kodama from those luncheons are also included on this page.



Noble Emery Sandra Westfall Lou Vitalie, Val Grohoski, Marion Grohoski



Sandy Gilman, Lou Vitalie, Ernie Kodama and "Sunny" Kirk



Sandra Westfall and Neil Burns



Sandy Gilman & Lou Vitalie



Dennis Gilman & Noble Emery



"Sunny" Kirk & Ikue Burney



Hilltop 1892 Restaurant luncheon



April 4 lunch at Trader Vic's



# CHAPTER HAPPENINGS

**West Georgia Chapter**—The West Georgia Chapter just held an election for new and renewed officers. Here are the results:

- President **Elizabeth Baum** replacing Al Moseley
- Vice President **Arlene Moore** reelected
- Secretary **Gloria Williams** reelected
- Tresury **Maria Malecki** replacing Elizabeth Baum

—Elizabeth Baum

**Northern California Chapter**—“Mamma mia, what a place,” exclaimed the chapter’s newsletter after the April luncheon at Buca di Beppo in Sacramento. “It must be ou most interesting luncheon site yet. Besides getting lost in all the nooks and crannies, one could read the walls for days and not see everything...from the pope room and table in the kitchen, few restaurants would invite guests to dine in the kitchen where the food is being prepared. The food and service were very good.”

The May luncheon meeting was much different, at the Country Cricket Kitchen, a real homey type restaurant with lots of folksy folks calling diners “honey” and “sweetie”. The restaurant is cluttered top to bottom with “stuff”—even an escapee from the Adams Family stands guard by the register. The Sacramento restaurant looks like an old curiosity shop.

Following the June luncheon at Country Waffles, the chapter took its summer break, and will return to action on September 12, 2012.

Besides luncheons, the chapter has also been busy with the annual spring bake and book sale at McClellan—a great turnout, with all the baked items and many books for sale. Following that, the chapter sponsored a used book sale, with books, videos, CDs and other media on sale between the BX food court and commissary.

## 2012 Commander’s Cup Golf Tournament raises \$5000 for AR-EA Scholarships

The North Texas Chapter AR-EA and DFW Chapter of the ALA hosted the “2012 Commander’s Cup Golf Tournament” on Monday, May 21 at Bear Creek Golf Club in Dallas. Over 150 participated in Tournament, which raised a whopping \$5000 for the AR-EA Scholarship Fund. Dale Linebarger served as the NTC AREA Chairman for this AR-EA Scholarship Fund Raising Event. Thanks to Rich Krug, Julie Fox and the entire Dallas Chapter of the ALA.



DFW ALA / NTC AREA Volunteers, less Dale Linebarger (Chairperson) and Jim Bockelman were still on the links and Meg Moore (she took the picture) with Julie Foxx, Rich Krug, Linda Dean, Brenda Morgan, Victor Morgan, Richard Sheff, Roy Dean and Jack Leavitt at Bear Creek Golf Course.



Meg Moore, who missed out on the group photo above, assisted with the auction.



Linda and Roy Dean, smiling volunteers



**Thomas C. Shull**  
**Army & Air Force Exchange Service**  
**Director/Chief Executive Officer**

Tom Shull is Director/CEO of the Army & Air Force Exchange Service (Exchange), headquartered in Dallas, Texas. The Exchange is the 43rd largest retail organization in the U.S. with annual revenue of \$10B, employing more than 43,000 civilians. The Exchange operates department and convenience stores, gas stations, restaurants, theaters, vending and other businesses on military installations in all 50 states, five U.S. territories and more than 30 countries.

Mr. Shull is a 1973 graduate of the United States Military Academy, West Point, N.Y. where he earned a Bachelor of Science degree. He received a Master of Business Administration with honors from Harvard Business School in 1981. His military schooling included Ranger and Airborne Schools. He had numerous line and staff assignments including Assistant Professor at the U.S. Military Academy and commander of a mechanized Infantry company. His awards and decorations include the Defense Superior Service Medal, Meritorious Service Medal, Expert Infantryman's Badge, Ranger Tab and Airborne Wings. In his last active duty assignment, then-Major Shull was Military Assistant to Robert C. McFarlane, Assistant to the President for National Security Affairs.

Prior to his selection as the first civilian Director/CEO of the Exchange, Mr. Shull co-founded and served as CEO of Meridian Ventures, Inc. From 2010 to 2012, he advised numerous retail clients on improving revenue and profit.

From November 2008 to December 2009, Mr. Shull served as the court-appointed Chief Restructuring Officer of Fred Leighton, a high-end jewelry retailer in New York City. Mr. Shull was Chairman of Wise Foods, Inc., one of the nation's leading regional snack food companies, from November 2004 to February 2008. He also served as CEO from September 2004 to December 2006. From 2000 to 2004, Mr. Shull served as CEO and President of Hanover Direct, Inc., a direct marketing company.

From 1997 to 1999, Mr. Shull served as President of Barneys New York, a leading luxury retailer. Prior to that he was Executive Vice President of the R.H. Macy Company, Inc., responsible for Human Resources, Information Technology, Business Development, Strategic Planning and Merchandise Distribution.

He is past Chairman of the Deafness Research Foundation, the largest private charity for funding research in the causes and treatment of hearing loss. In addition, he is a former member of the Board of Trustees of the Association of Graduates of the U.S. Military Academy.

<b>SCHOLARSHIP DONATIONS</b>		
<b>DONORS</b>	<b>IN MEMORY OF</b>	
Tom and Ann Brogan	Larry Ihori	\$100.00
G. T. Fearson	James Matthews	\$75.00
G. T. Fearson	Roger Baldin	\$75.00
Emmy Krivacic	Anne Schuman	\$50.00
Ed Fitzgerald	Eva Fitzgerald	\$500.00
Gary Smith	Al Nussbaum	\$100.00
AREA SC Chapter	Shirley Tucker	\$25.00
Ed Von Trotha	Ray Black	\$100.00
Michael Griffin	Lester Killebrew	\$50.00
Southeastern Chapter—While we lost the two longtime friends and chapter members (shown in next column) in 2011, our good news is this is a new record donation for our small chapter. --James Mahoney, President	Paterson Colquitt Shelton C. Beck	\$880.00
<b>DONOR</b>	<b>AS A GENERAL DONATION</b>	
**DFW Chapter of American Logistics Association	From the May 2012 Commander's Cup Golf Tournament	\$5,000.00

Note: \* denotes non-AAFES retiree  
 \*\*denotes Non member of AREA

### Email Address Changes

MILLER, VERLAND L vernjane@tx.rr.com
GILDERSLEEVE, JAMES P jim@informintl.com
JAMES, LYNDA F jazzyyn@bellsouth.net
TOYAMA, JAMES H jtoyama@ktb.biglobe.ne.jp

CORLEY, TERRY B terry-corley@sbcglobal.net
SALINAS, JIM salinas2940@att.net
VON WEHRDEN, HOPE dkpirhalla@cox.net
ALLGIRE, WILLIAM D allgirew001@hotmail.com

BARKER, KLARA canyonoaks11@windstream.net
WILLIAMS, PAUL R prw1227@gmail.com
COVERT, LEROY W lj.covert@comcast.net
VAN CAMP, NANCY J nancyv187@aol.com

## IN REMEMBRANCE

**Oscar B. Blakney**, 83, died Jan. 22 in Fayetteville, N.C. The Fort Bragg maintenance worker retired in 1990.

**Edna R. Harris**, 86, died Dec. 3 in Columbia, S.C. The Fort Jackson associate retired in 1976.

**Larry S. Ihuri**, 85, died Feb. 13 in Cupertino, Calif. The HQ associate retired in 1973.

**June H. Lamming**, 80, died Feb. 9 in Rancho Cordova, Calif. The McClellan AFB training instructor retired in 1993.

**Domingo S. Prudente**, 86, died Jan. 18, in Fayetteville, Ga. The HQ associate retired in 1993.

**Dorris J. Roberts**, 71, died Nov. 4 in Hephzibah, Ga. The Fort Gordon laborer retired in 2004.

**Norma E. Woodward**, 83, died Jan. 31 in Eatonville, Wash. The JB Lewis-McChord retail manager retired in 1984.

**Albert G. Ferguson**, 81, died May 22 in Honolulu, Hawaii. He worked at AAFES from Aug 1958 until May 1989, when he retired as Exchange Manager Hawaii Area Exchange.

He is survived by wife, Anneliese J. Ferguson of Honolulu and his five children and their spouses: daughter Maureen Ferguson-Lewis and Bill Lewis of Redondo Beach, CA; son Michael B. Ferguson and Francis Allsman Ferguson of New York, NY; daughter Michele R. Ferguson and Jason Batunbacol of Honolulu; son Marc P. Ferguson and Keith Arnold of Atlanta, GA and daughter Meredith A. Ferguson-Bechirian and Chris Becherian and their two children Rocco Becherian and Francesca Becherian.

**Francis (Sully) Sullivan**, 92, died on May 10 with his wife of 67 years Faye (Pinky) at his side. Affectionately known as "Sully" to all who knew and loved him, he was born in San Francisco, CA on April 21, 1920. He interrupted his college education to enter the US Army Air Corps as an Aviation Cadet and graduated in July 1942.

Following graduation, he served as a Navigator on the B-17 in the Pacific Theatre. His distinguished military career continued for 28 years through the Korean and Vietnam wars. He was awarded over a dozen medals, including the Distinguished Flying Cross, Purple Heart, Air Force Commendation Medal and the Bronze Star.

Upon retirement from the Air Force as a lieutenant colonel, Sully joined AAFES. He served as a construction management engineer in Dallas, where he participated in its modernization efforts, including upgrading of the overseas distribution system. He retired from AAFES in 1986 after 15 years. Sully is predeceased by his daughter Suzanne, and survived by his wife Pinky, son Michael Sullivan and wife Susan, granddaughter Kelly, sister-in-law Louise King, brother-in-law Rev. Bobby King and wife Bobbie Joyce, nephew Bobby King III, niece Kitty Carolyn Dennison and husband Jerry. Following a memorial service on May 16, he was interred at the DFW National Cemetery.

**Joseph Laamea Tatsuo Oda**, 85, of Lakewood, WA and Honolulu, Hawaii, passed away suddenly on Wednesday May 9, 2012. Joe is survived by his wife of 60 years Edith (Edie), an AAFES retiree, and was an active participant with her in AREA activities at the chapter and national level. Joe was born on July 2, 1926 in Pearl City, Oahu and devoted his adult years to the service of his country in the United States Army. He was a veteran of three wars and retired at Ft Lewis, WA in 1968. Throughout his military career he was known for his skills in logistics and his kindness and fairness during inspections. He was also known for his musical talent often entertaining the troops singing his beloved Hawaiian melodies, he later continued to teach his grand and great-grand children the art of singing Hawaiian songs. He also loved listening to classical music, operas and musicals. Upon conclusion of his military carrier he was employed by Hooker Chemicals in Tacoma and later took an overseas assignment with Control Data GmbH in Frankfurt, Germany. Upon final retirement in 1991 he and his family re-established their home in Lakewood, WA. He continued his passion for the outdoors, gardening and most of all he loved fishing. He taught all his children, grand-children and many friends how to catch the "Big One". He loved to entertain his family and friends with his cooking skills. Everyone looked forward to his "famed" smoked and grilled salmon, BBQ ribs, potato salad, and sushi (amongst some of his delights). Another of Joe's passions was traveling around the world and learning about different cultures with his beloved wife, Edie.

Most of all, Joe was a proud and loving family man. In addition to his wife, other survivors include his children, Viola Ching (Terry), Harley Oda (Irene), Patrick Oda (Annmarie) and Naomi Lehman (David), his grand-children Stephanie McNeilley, Jeffrey Ching, Jason Ching, Giulietta Oda, Alexandre Oda, Ginny Lehman, James Lehman and seven great-grandchildren.

## New AREA Members

CORLEY, TERRY B (TINA)  
7820 CLARK CT  
OVILLA TX 75154-5560 Ph:

DOBERT, MAUREEN A  
2203 BRIDLEWOOD DR  
RANCHO CARDOVA CA 95670-4227 Ph: 916-852-0864

HORIUCHI, BETTY  
6538 GEORGIAN WAY  
COLUMBUS GA 31909-4443 Ph: 706-565-0682

JAMES, LYNDA F (EUSTACE)  
6823 COVE CIR  
COLUMBUS GA 31907-4535 Ph: 706-569-8780

KNEECE, LINDA H (TEDDY)  
2913 BERKELEY FOREST DR  
COLUMBUS GA 29209-4107 Ph: 803-206-3404

LICZBINSKI, MARIAN JOHN (CHRISTA)  
8332 WINECUP RIDGE  
DALLAS TX 75249-2810 Ph: 972-283-6620

MCPAHAN, FRANCES L (CLIFF)  
4206 OAK HOLLOW DR  
MIDLOTHIAN TX 76065 Ph: 972-723-2204

PANSZA, CYNTHIA  
6538 GEORGIAN WAY  
COLUMBUS GA 31909-4443 Ph: 706-565-0682

PEREZ, NOELIA (JULIO)  
CALLE 80 BLQ 110 #11 URB VILLA CAROLINA  
CAROLINA PR 00985-4106 Ph:

RAKESTRAW, JOHN (DARLENE)  
1220 REEDSPORT PL  
DESOTO TX 75115- Ph: 972-223-1669

ROSIE, WOMACK T (OSCAR)  
PSC 78 BOX 7336  
APO AP 3091 Ph:

SALINAS, JIM (BIBI)  
1527 W. COLORADO BLVD.  
DALLAS TX 75208-2717 Ph: 214-317-5263

SANDOE, ELIZABETH F  
9410 COURAGE DR.  
FAIRHOPE AL 36532-7402 Ph: 251-517-7904

### LISTING CHANGES A(Address) T (Telephone) Z (Zip Code) M (Marital Status)

BANISTER, CARRIE E (BRUCE)  
46 OAKS PLACE  
LAGO VISTA TX 78645-6978 Ph: 512-267-5523

A

MILLER, RICHARD M (SONYA)  
3273 E. FLAMINGO RD APT. 106  
LAS VEGAS NV 89121-7408 Ph:

A

TRIVERI, ANNETTE S (JOHN)  
7041 BENT TREE BLVD APT 631  
COLUMBUS OH 43235- Ph: 614-798-8114

A



## AREA SCHOLARSHIP FUND DONATION FORM

**To: AREA**  
**P.O. Box 380614**  
**Duncanville, TX 75138-0614**

**From:**  
  
**Telephone**

**This donation is (check one box below) \*IF YOU HAVE MORE THAN ONE PERSON TO LIST, USE COMMENTS SECTION BELOW**

- |  |         |
|--|---------|
| <input type="checkbox"/> <b>*In Honor of</b>     | (Name)* |
| <input type="checkbox"/> <b>*In Memory Of</b>    | (Name)* |
| <input type="checkbox"/> <b>An Annual Pledge</b> |         |
| <input type="checkbox"/> <b>Other</b>            |         |

**Send Card to:**

NAME	
ADDRESS	
ADDRESS	
CITY, STATE, ZIP CODE	
TELEPHONE	

Amount of donation (check enclosed) \$

I wish to pledge \$ \_\_\_\_\_ each year to the AREA Scholarship Fund. My donation for the current year is enclosed.

Your donation will be acknowledged to both the donor and to the recipient or the survivor. All donations are income tax deductible.

**DONOR NAME (Printed)**

**SIGNATURE**

**COMMENTS:**

\*  
 In memory of: \_\_\_\_\_  
 In memory of: \_\_\_\_\_  
 In memory of: \_\_\_\_\_  
 In memory of: \_\_\_\_\_

\*  
 In honor of: \_\_\_\_\_  
 In honor of: \_\_\_\_\_  
 In honor of: \_\_\_\_\_  
 In honor of: \_\_\_\_\_

## MEMBERSHIP UPDATE FORM

Type of Change (Check All Boxes Below That Apply)

Address	<input type="checkbox"/>	Telephone	<input type="checkbox"/>	FAX	<input type="checkbox"/>
E-mail	<input type="checkbox"/>	Marital Status	<input type="checkbox"/>	Other	<input type="checkbox"/>

Enter New Address in "Current Address" block BELOW and List Other Changes Here--

(Printed Name) (Signature) (Date)

Check here if you would like to be put on the mailing list for future membership directories, which are published in even-numbered years and provide you a listing of names and addresses of AREA members.

**TO: AREA (ATTN: Membership Director)**  
**P.O. Box 380614**  
**Duncanville, TX 75138-0614**

**CURRENT ADDRESS:**

### USEFUL TELEPHONE NUMBERS

The following telephone numbers are provided as a convenience to members wishing to contact certain HQ AAFES offices and the AAFES Federal Credit Union.

**HQ SWITCHBOARD**  
 (214) 312-2011

**FOR RETIREMENT and GROUP INSURANCE BENEFITS:**  
 HQ. AAFES BENEFIT BRANCH REPRESENTATIVES (800) 519-3381

**GENERAL COUNSEL:**  
 COLONEL ERIC E. WEISS, USAF (214) 312-3126

**EXCHANGE POST:**  
 BARBARA KIRSCH (214) 312 3831

**SALES TABLOIDS:**  
 DEBBIE BYERLY (800) 733-5142

**ID CARD, PRIVILEGES**  
 HR-L/H Servicing Personnel Office (214) 312-3330  
 ID Cards issued Monday, Wednesday, Thursday and Friday from 7:30-10 a.m.

**DOD VEHICLE STICKERS:**  
 DOD stickers are issued in AD from 7:30-11 a.m. on Monday, Wednesday, Thursday and Friday.

**AAFES FEDERAL CREDIT UNION: TOLL FREE SERVICE**  
 NORTH AMERICA (800) 452-7333  
 UNITED KINGDOM 0800-89-7490  
 GERMANY 0130-81-1187

**FOR OTHERS NOT LISTED:**  
 PAT WEAVER (972) 780-9810

For other information, check out the AAFES website at: <http://www.shopmyexchange.com> and the AREA website <http://www.shopmyexchange.com/community/area>

## ASSOCIATES AND RETIREES OFFERED OPPORTUNITY TO ASSIST WITH:

## Workforce Recruitment Program Housing Program for Interns

The Exchange annually participates in the Workforce Recruitment Program (WRP) Internship for College Students with Disabilities. Thanks to your support the program continues to increase each year. WRP, co-sponsored by DOL and DOD, serves as a resource for disability employment. There is absolutely no cost to the Exchange for participating in this outstanding program.

Due to the overwhelming response this year, and our efforts to customize employment needs, we are selecting students nationwide, thus many will be non-local residents and will need to secure housing. We are looking for individuals and or families who might be interested in providing low/no cost housing for these students. Students are responsible for paying for their housing, transportation and living expenses. **As part of the disabilities employment outreach initiative, we would like to provide interested Exchange Associates and Retirees the opportunity for non-local WRP students to board with them during the 14-week assignment.** Student Interns will NOT be allowed to board with an Associate in their chain-of-command. Assignments have already begun and will conclude by September 30 2012.

Currently, the only request for housing assistance is in the Dallas area for a male intern who has been assigned to HQ SD.

Any/all housing and payment arrangements for student living expenses will strictly be between the Exchange Associate and/or Retiree and the WRP Student prior to the assignment. The Exchange will not assume any liability whatsoever for any agreements, costs, damages, etc., of any kind. If your residence is handicap accessible, or you have a vehicle that is handicap accessible please let us know. For those interested in supporting this effort, please contact Equal Employment Opportunity Diversity and Inclusion (EEODI), Carlyn Houston, [houstonc@aafes.com](mailto:houstonc@aafes.com) , 214-312-2630.

Thank you for your continued support of the Disabilities Employment Program.

—Carlyn Houston

***Help Us Save Money!***  
***Get the Newsletter online***  
***rather than through the mail.***



***The difference in cost is significant\*, and you'll enjoy these advantages:***

***Get the Newsletter first, before anyone else.***

***E-mail is faster than snail-mail.***

***The Adobe Acrobat (.pdf) format is in color and you can transfer/save the file as you desire.***

\*Per copy print cost at \$1.42 + mailing at \$0.57 = \$1.99 cost per copy. Do yourself and AREA a favor – try the Newsletter via e-mail attachment.

Here's what one member said: *"The e mail edition is superb. Easy to read, brilliant colors, etc. I can't say enough about it, and would recommend that anyone with a computer should give it a try. Especially since they can always convert back to hard copy. I doubt if any would do that."*

Send an e-mail to Pat Weaver, Membership Director, at [ken-pat@sbcglobal.net](mailto:ken-pat@sbcglobal.net) and state that you would like to get the Newsletter on line and we'll do the rest. Give it a try. If you don't like it, we can always add you back to the snail-mail list.

*Chuck*



**AAFES RETIRED EMPLOYEES ASSOCIATION**  
**P.O. Box 380614**  
**DUNCANVILLE, TX 75138-0614**

PRSR STD  
US POSTAGE PAID  
DALLAS, TX  
PERMIT #1478

**DUES ALERT!** Please check the expiration date above. If the date is June 2012 (or earlier) please send your \$15 dues PAYABLE to AREA.

Shop Online Now | Exchange Stores | Community | About Exchange | Credit Services | Customer Relations | Doing Business

**EXCHANGE™** Enjoy NO SALES TAX & FREE Standard Shipping offers (excludes Online Mall purchases). MILLIONS of items available.

*You save, we give back.*

Home > Community > Retired Employees Association

**Community**

- Support Your Troops
- Salute To Your Service
- Patriot Family
- Operation Be Fit

**Retired Employees Association**

- Your Benefits
- Board Membership
- Contact AREA
- Constitution & Policy
- History
- Chapters
- Corporate Sponsorship
- Friends & Neighbors
- News

**Contributing to the Future**

**Supporting the interests of the Exchange, its retirees and the people it serves.**

The Retired Employees Association is committed to supporting its local chapters, encouraging friendships, and volunteerism, as well as supporting our communities through scholarships, emergency relief funds, and the protection of retiree benefits. Our purpose of this website is to provide you with resources about your benefits, help maintain connections through our newsletters, as well as keep you up-to-date on the news and changes that affect you!

**Overview**

**AREA**

- From the President
- Why Join AREA?
- Apply/Renew Membership
- Membership Update Form
- Scholarship Donation Form
- Annual Report

Visit the new AREA website at: [www.shopmyexchange.com/community/area](http://www.shopmyexchange.com/community/area)  
It's easy: just use the internet address above or, if you're the adventuresome type, log on to the Exchange website at [www.shopmyexchange.com](http://www.shopmyexchange.com), click on Community in the blue banner and then Retired Employees Association.