



AAFES RETIRED EMPLOYEES ASSOCIATION

# NEWSLETTER

JANUARY 2011

SUPPORTING THE INTERESTS OF AAFES, ITS RETIREES AND THE PEOPLE IT SERVES

**Q. What's new at the Exchange?**

**A. The Marketplace at Fort Bliss and so much more!**



**Y**ou might not recognize some of the new facilities, such as the Marketplace at Fort Bliss, that have opened on military installations. In this issue, you'll get a cram-course in what's going on at the Exchange from the Commander and Chief Operating Officer. Turn to page 10 to start the fascinating reading and see more pictures about today's Exchange and the excitement that the rebranding of AAFES to the Exchange is bringing to installations worldwide. The Marketplace has just opened at Ft Bliss is a common area that the entire military complex can use. The Marketplace

includes Exchange food facilities that are both direct run and concession, retail and service concessions, plus third party venues (commercial real estate leasing). Our thanks to the Commander, the COO and their staffs for helping bring AREA members up to date with the inside word and insight into today's Exchange.



**CHUCK POFFENBARGER, PRESIDENT**

# AREA & Chapter Goings On

Bit O' This  
Bit O' That

## *Welcome to the January 2011 edition of AREA's Newsletter*

Welcome to the January, 2011 edition of AREA's Newsletter, and the first month of Winter. January is named after the Roman god Janus, who was always shown as having two heads. He looked back to the last year and forward to the new one. The Roman New Year festival was called the Calends, and people decorated their homes and gave each other gifts.

\*\*\*\*\*

**"One kind word can warm three winter months."**

- Japanese proverb

At our board meeting on October 29 we approved our standard scholarship program for the 2011/2012 academic year. Here are the program parameters:

### **Standard Scholarship Program**

- ✓ 12 scholarships for a total of \$40,000, with these dollar amounts:

	2/\$5,000
	10/\$3,000
Total	12/\$40,000

- ✓ The awards, as determined by the Scholarship Committee, remain flexible in both number and amounts based on the caliber of the applicants.

At our January, 2011 board meeting, which is usually held at the end-of-the-month so we can review year-end data, we'll determine the exact amount of the 2011/2012 program, based on the income generated in 2010. Read more about the AREA Scholarship Program and DFW ALA support on pages 14-16

It's a real team effort to generate the funds necessary to support our scholarship program. I want to personally thank AREA members and other individuals who donated their hard-earned money to this program. Special thanks also goes to two America Logistics Association (ALA) chapters - Dallas/Fort Worth (DFW - President: Richard Krug) and Hampton Roads (HRALA - Past President: Cory Belkov) for their continuing interest and involvement in this important program. Absent their support, we would not be able to recognize as many young people as we do with scholarships for academic pursuits. Here's what one young man says about this program:

*Mr. Gallagher: Thank You and your committee so much for believing in all of the AAFES Scholarship Award Winners since you were the first outsiders to offer support and financial means to which I will depending on from others as I pursue my Medical Degree at THE UNIVERSITY OF TEXAS! My Very Best, Ryan C. Ellis*

The recorded minutes of all of our board meetings are available on our web site, [www.aafes.com/area](http://www.aafes.com/area). Click on History, and then Milestones 00-current. Also on our web site at Annual Report - 2009 are our audited financial statements for that year. Our books are audited every year.

Have a nice (i.e., hopefully mild) winter I'll see you in April, income tax time and the first month of Spring.

*Chuck*

## ***YOUR AAFES BENEFITS...***

# No Cost of Living Adjustment (COLA) for 2011

*There will not be a COLA paid to AAFES retirees for a second year*

## Why is there no COLA?

The COLA is based on the inflation measure known as the Consumer Price Index for Urban Wage Earners and Clerical Workers (CPI-W). Each prospective year's COLA is determined based on the change in the CPI-W from the third quarter of the prior year to the current year's third quarter. Since there was no increase in the CPI-W **from the third quarter of 2009 through the third quarter of 2010**, there will be **no** COLA increase for 2011.

## Are you getting the most for your money when you fill prescriptions?

Get the most value from your DoD Nonappropriated Fund Health Benefits Program when you need to fill prescriptions. Here are three ways to save:

### 1. Ask your doctor about generic drugs.

When your doctor prescribes medication, be sure to ask if there is a generic equivalent of the drug. If there is, you'll pay less for it. Why? A generic drug is one that is produced and sold under the chemical formulation name rather than a brand name. Because generics are sold by generic drug manufacturers who don't have to recoup development costs, they cost less than brand-name drugs. They're safe and effective, too. The FDA requires generics to have the same quality, purity and stability as brand-name drugs. Generic drugs are shown as Tier One on Aetna's preferred drug list (also called the "formulary").

### 2. Check the preferred drug list for brand-name drugs.

Under the plan, you pay less for brand-name drugs on the formulary. If you're currently taking a brand-name drug, you can check the formulary to see if it's preferred (Tier Two) or non-preferred (Tier Three). You can then use this information to discuss lower-cost alternatives with your doctor. To view the preferred drug list, visit [www.AetnaPharmacy.com](http://www.AetnaPharmacy.com) and look for the link to the preferred drug list on the left side of the home page.

### 3. Use the mail-order service for maintenance medications

If you or a covered family member uses prescription medication regularly, be sure to look into the Aetna Rx Home Delivery®, mail-service pharmacy. You can order up to a 90-day supply of medication for the price of a 60-day supply at a retail pharmacy. It's like getting one month free. Plus, if you have questions about your prescription, you can call to talk with a registered pharmacist — 24 hours a day, seven days a week. For more information, visit [www.aetnarxhomedelivery.com](http://www.aetnarxhomedelivery.com) or call 1-866-612-3862.

Use these three tips to get the most for your money — and from your plan.



### **AAFES RETIRED EMPLOYEES ASSOCIATION**

The AREA Newsletter is published in  
January, April, July and October

#### **Mailing Address:**

AREA  
P. O Box 380614  
Duncanville, TX 75138-0614  
FAX: (972) 283-6948

#### **President:**

Chuck Poffenbarger  
[cpoffen@yahoo.com](mailto:cpoffen@yahoo.com)  
Tel: (972) 296-0388  
FAX: (972) 692-5176

#### **Membership & Address Changes:**

Send your NEWSLETTER ADDRESS and MEMBERSHIP changes to the Membership Director Pat Weaver.

[ken-pat@sbcglobal.net](mailto:ken-pat@sbcglobal.net)  
FAX & Tel: (972) 780-9810

#### **Newsletter input:**

Submit articles for the newsletter to the editor by e-mail to Newsletter Editor: Larry E. Phillips

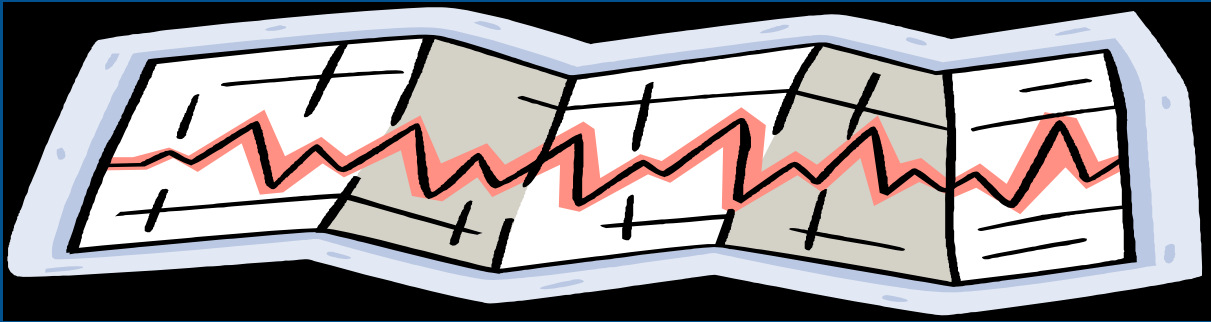
[AREA-Newsletter@tx.rr.com](mailto:AREA-Newsletter@tx.rr.com)

AREA Web address:

<http://www.aafes.com/area>

## YOUR AAFES BENEFITS...

### How YOU can earn health incentive credits



### in the DoD Nonappropriated Fund Health Benefits Program

Effective January 1, 2011, you and your covered family members can earn Health Incentive Credits (HIC) as a reward for **taking steps to improve your health!** The credits are used toward your annual deductible and coinsurance for taking one of the following actions:

Activity*	Health Incentive Credits Earned	Credits Posted to Account within 3-10 days:
Complete or update Health Risk Assessment on <a href="http://www.aetna.com">www.aetna.com</a>	\$100 each – 1 per year	After completing or updating Health Risk Assessment
Have a Preventive Care Exam	\$100 each – 1 per year	After the preventive care claim is paid

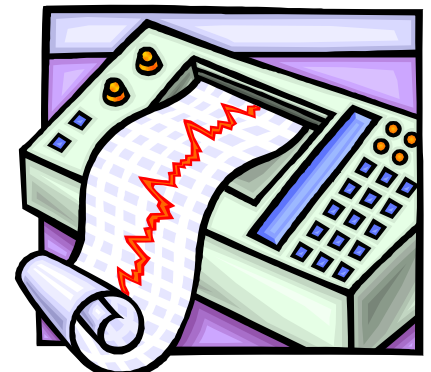
You and your dependents can complete the wellness activities described above to earn Health Incentive Credits. These credits will be placed in an account and applied towards the first family member's claim where the deductible and/or coinsurance would be applied. **You can earn a maximum of \$100 per year per person, up to \$300 per family per year.**

#### Health Incentive Credit features:

- Applied to your medical deductible and/or coinsurance as claims are processed
- The credit will roll over each year until you use it, for up to 3 years
- Credits are displayed under Explanation of Benefits and in Aetna Navigator

\*Preventive exams eligible for the incentive: annual routine physical, well woman exam or well child exam. Covered children must complete a Preventive Care Exam for credit. Covered adults can complete a Health Risk Assessment or Preventive Care Exam for credit.

**Note:** The Health Incentive Credit cannot be applied to copayments such as PCP, Specialist, Emergency Room, Urgent Care copays, Hospital confinement fees, or Pharmacy copays.



## *AAFES BENEFITS Questions & Answers*

*Q. Do retirees have an insurance open enrollment period like the active duty AAFES employees?*

A. Yes we do. During the Open Enrollment Period, AAFES retirees may change medical plans, if more than one is offered in your area, drop dependents or cancel coverage, with the understanding that you may not re-enroll.

Medicare eligible annuitants and their survivors who are covered by the Nonappropriated Fund Health Benefit Program (NAF HBP) may suspend NAF HBP coverage to use Tricare for Life at any time. If you wish to re-enroll in the NAF HBP you may do so during an annual open enrollment period. If you involuntarily lose your Tricare for Life plan, you may re-enroll in the NAF HBP effective the day after your coverage ends. Your request to re-enroll must be received by HQ AAFES FA-T (Benefits) within 31 days after your coverage ends. Otherwise, you must wait until the next open enrollment period to re-enroll.

*Q. Will the dollar value of our health care that will be reported to the IRS be included in our tax responsibility in 2011? If not, when will we be responsible for paying tax on our health care?*

A. Section 9002 of the new Health Care Reform law will require employers to enhance their W-2 reporting by including information detailing the costs incurred for providing health care to active employees. These costs are not taxable to the employee. It is our understanding that this reporting requirement does not apply to our retirees whose pension payments are reported on 1099's.

The Benefits Branch will continue to update you on how health care reform will impact AAFES in the years to come as more details become available. You can go to <http://www.healthcare.gov> for more information on this new legislation.

*Q. How is the spousal annuity benefit calculated?*

A. If you are married at retirement, you must decide whether or not to arrange for a pension for your spouse. The spousal annuity would begin after your death. Here are the key factors to consider:

- Your spouse must acknowledge your decision (signature).
- The setup cost is a 10% reduction in your pension.
- The amount of your spouse's benefit is 55% of your pension (or 55% of the portion you elected to apply for the spouse's benefit)

**Important Note! You cannot change your decision after retirement unless you divorce, or upon the death of your spouse.**

*Q. Why do our CAC cards list "Other" in the Pay Grade section. Grade is an important factor in the DOD world and our retirees are proud of the grade they attained before they retired. Can you provide an explanation for the "Other" in the Pay Grade section rather than the actual retirement grade?*

A. There is no option for our ID site administrators to select a grade when issuing a Retiree CAC. There is not even a field that has "Pay Grade" on the printed card. That's because the word "Other" is printed on the card in the space where an active employee has benefits designated. The only way to issue the card is to select "Other" in the pay grade field in the system as this is the only option available. AAFES does not control the way the data is captured or utilized within the RAPIDS system. The pay grade should be entered on the DD 2574, the AAFES ID card.

*Q. Will the Federal Pay Freeze have any effect on AAFES retirees?*

A. The impact on AAFES is undetermined right now. The following message was sent on November 30 by COO Mike Howard to inform Exchange associates about the impact on them:

As you may have heard, President Barack Obama on Monday (November 29) proposed a two-year freeze of the salaries of some 2 million federal workers. While we are closely monitoring this situation, the impact on Army & Air Force Exchange Service associates has yet to be determined. Specifically, the proposal to freeze all federal salaries requires Congressional approval. Any interpretation of the impact on Exchange associates will have to be determined based on actual legislation and Department of Defense guidance.

Once again, our team is mindful of this sensitive subject and working to better define its impact on our organization. As such, we will be providing updates concerning this developing issue as it is better defined.

**MICHAEL P. HOWARD**  
Chief Operating Officer

## CHAPTER HAPPENINGS

### Alamo chapter volunteers help wrap Christmas gifts for Lackland AFB trainees

On Saturday, December 4, 2010 Bob and Virginia Askew volunteered to assist in the annual gift wrapping event at the Lackland Air Force Base Exchange for those Airman recruits who would likely not make it home for the Christmas Holidays.

Answering the call for volunteers, Bob and Virginia were asked to arrive at the base gift wrapping venue at 7 a.m. on Saturday morning where the trainees would arrive after shopping at the Main Exchange. The wrappers were tasked with wrapping the gifts, then boxing them suitable for mailing back home to families, girl or boy friends and some even to themselves, for future use.

“There was a great deal of enthusiasm on the part of the wrappers who had occasion to visit with the trainees, find out where they were from and where they expected to go for their next assignment or technical training school,” Bob said. “It was interesting to note the many instances where the wrapper and the trainee had infinity regarding hometowns, technical schools they would attend and other facets of the trainee’s future.”

At the end of the event, Bob had occasion to visit with a trainee who indicated how excited he was to be going to his Technical Training School at the language institute at Monterrey, California. When asked which language he would learn, he replied that he didn’t know yet, but that Chinese was his first choice if he could get it. Interestingly, Bob informed the young man that was the language he learned in the U.S. Air Force Institute of Far Eastern Languages at Yale University.....in 1957. It’s not such a small world after all. Bob and Virginia deem the annual gift wrapping day to be a very worthy event to take part in highly recommend it for anyone in the San Antonio area.



Gift wrapping for Air Force trainees at Lackland AFB gets underway (above) after the trainees return with their purchases from the Exchange. At right, Virginia Askew places one of her wrapped gifts in a postal box to finish up a gift for a trainee she’s assisting.



**Northern California Chapter**—Fall was busy for the chapter with luncheons in October in November and the fall bake and book sale at the McClellan Exchange. The chapter newsletter reported, “we had lots of books but a limited amount of baked items...we sold out of baked goods right down to the very last cookie and cupcake. We had many regular customers who look forward to our sales, just as we look forward to seeing them.”

A new program begins in January 2011 to show appreciation to members who faithfully attend monthly meetings and support money making project—all those members will receive a free birthday lunch during their birthday month. During the chapter’s summer break, July and August, all birthdays in July will be observed ahead of time in June, and those with August birthdates will have their free lunches in September. The chapter will offer this program 2011 and then determine if it will continue the following year. The chapter also made a \$200 donation to the food bank through a Sacramento grocery store, which matched the donation. Other donations this year were to The Mustard Seed School, Boy Scouts of America, Cancer Research and Cerebral Palsy of Great Sacramento.

# CHAPTER HAPPENINGS

## Oktoberfest fun in Big D area

**North Texas Chapter**—The NTC AREA Addison Oktoberfest in September was a big hit. Members received admission and food/drink tickets. The participants enjoyed terrific music (many of the bands (such as the one pictured below came direct from Munich), good German food and the best beer on the planet—Spaten Oktoberfest and Lager (barrels flown in from Munich). This Addison experience is the closest thing to the real thing. For those of you outside the DFW area, Addison is a suburban city on the north side of Dallas and stages an annual Oktoberfest while the big one's going on in Munich. If you are an AAFES retiree in the North Texas area...don't miss out...join NTC.



Barbara Caisse Alfred Caisse  
Frank Cinatl, Marty Handel,  
Paula Lockett, Kav Kavavaugh,  
Karen Murayama, Frank Vitullo,  
Dalton Murayama, Sook Vitullo,  
Carmen Conti, Paul Kelleher,



Louis Pack  
Jim Kotani



Dale Linebarger, Sonya Miller, Cheri Courtney Linebarger, Skip Miller, Meg Moore, Hayward Moore, Christine Justus



And who are these people? Rich Sheff said he had no idea but included them because you'd probably never see a kilt at the Munich Oktoberfest! Photo at right shows some of the beer, wine and one of the posters from the Addison Oktoberfest.



In the bottom photo, the tent's nearly empty, but these stalwart AREA Oktoberfest attendees—who claimed they were the 'Last Man Standing'—are Carmen and Helen Conti, Karen and Dalton Murayama, Rich and Sue Sheff, Skip and Sonya Miller and Christine Justus.



Bill and Corrine McQueen having a good time



Chuck and Lina Poffenbarger, Sook Vitullo, Frank Vitullo, Carmen Conti, Kav Kavanaugh



# CHAPTER HAPPENINGS

**Aloha Chapter**—The Aloha Chapter entertained 51 “**SENIOR ELVES**” and Guests at their annual Christmas Party on Sunday, December 5. The location was the venerable Pearl Country Club—the site of many past Christmas functions for our chapter. The event kicked off with pupus (local for “munchies”) furnished by several members from the steering committee and a lively social hour renewing friendships—and catching up with important gossip—with those not seen since last Christmas. Time to get down to the serious business of “eating” which kicked off with a welcome by Chapter President **PHIL ROACH** and invocation by **WILTON SANTOS**. A prime rib buffet luncheon was enjoyed by all with – SURPRISE! SURPRISE! – few leftovers. Even in retirement we carry-on the tradition of all AAFES associates – THE LOVE OF EATING!!!

The afternoon was filled keeping everyone involved, engaged and moving with games such as our standard and most active “Box Game” (**CHARLOTTE ROACH**), the “Snow Game” (**LINDA SHIMIZU**), “Pass the Bows” (**JUDY BARGFREDE**), “Jun Ken Po” (**ROSE KAWATA**), door prizes, and Christmas trivia questions thrown out to the group by **MC BILL ALLGIRE**. The table center pieces of Poinsettias (provided by the Chapter) and crocheted Christmas trees made by **MARLENE TOKUHISA** were also provided as door prizes. As always, the GRAND PRIZE(S) of three (3) new, crisp \$100 bills was highly anticipated and this year’s winners were **LORI YAMAMOTO, JANICE FAUST and ROSE KAWATA**.

Our new 2010 retirees and chapter members **MARY ANN ASATO, NORA HIRAKAWA, JAN SANTANA, ERNIE SAXTON, GLENN SCHUBERT, WILLA GARDNER and LESTER LEVAL** were recognized and welcomed as were our guests, the new General Manager, AAFES-Hawaii **FLOYD WYNN** and his wife, **TIFFANY**.

Reluctantly, we dispersed and retired to our individual abodes for a much deserved “seniors quite time” – better known as a **NAP!!!!**



Buda Ishihara and Dot Irvine



Moni and Lani Fergerstrom



Gary and Adrienne Hamada,  
Wendell Wong



Bea Shiroma and  
Bill Allgire



Julia Davis, Tiffany Wynn,  
Alice and Glenn Schubert  
and Floyd Wynn

Milton and Linda Shimizu,  
Wilton Santos, Judy and  
Bruce Bargfrede



Wilton Santos and Marlene  
Tokuhisa Jun Ken Po



James  
and Willia  
Gardner



# CHAPTER HAPPENINGS



Luverne Quemuel



Helen Conti and prized gift

## North Texas Chapter Holiday dinner and stroll Photos by Richard Sheff

**North Texas Chapter**—The chapter held its Annual Holiday Dinner & Stroll on December 5 at McCormick & Schmick Restaurant in NorthPark Mall, Dallas. In addition to a delicious meal, the 60 attendees enjoyed a fun afternoon topped off with a lively “white elephant” gift exchange—and everyone wound up with just the right gift, as shown in the center photo above. Some did venture out into the shopping mecca to window shop, look at the decorations and enjoy the entertainment.



Linda & Roy Dean and Joe & Dotty Krivis



These two tables have finished their meals and are ready for the “white elephants” to appear.



Winston Kavanaugh, his son, Gregory and Bill Paugh



Carmen Conti drew a radio as his gift.



Jerry Cloud displays his gift



James and Ruby Dobson



# Greetings from the Commander

*There's "X-citement" in leading the Exchange into 2011*

By Maj. Gen. Bruce A. Casella

With just six months at the helm of the Army and Air Force Exchange Service – now the Exchange – I continue to be amazed and inspired every day by the determination and commitment of our associates and all they do.

When it comes to operating a \$10 billion retail giant, that's a lot of effort. And I realize it took a lot of determination and commitment by you, the associates who came before to bring us to where we are today.

On July 25, this year we celebrated the Exchange's 115th anniversary, marking the day that the then-War Department's General Order No. 46 directed commanders to establish an exchange at every post where practicable.

Today, the Exchange is creating exciting shopping destinations that engage patrons, because they, their children and grandchildren, will be the ones we serve for the next 115 years.

In that spirit, we are re-branding the benefit. Our new logo, a red and blue "X" with the word "Exchange" underneath, represents the depth and breadth of facilities and services we bring to the military community. Debuted in September with the "brand opening" of the Tinker Main Exchange, followed by a prominent role at Ft. Bliss' Freedom Crossing Celebration, eventually the "X" will mark the spot of Exchanges around the world.

Our goal is for our 12.3 million authorized shoppers to do the following when they spot the "X":

- immediately think of the Exchange
- connect emotionally to the brand through positive experiences
- associate the Exchange with high-quality products and services
- make the Exchange their primary shopping destination
- recommend the Exchange to others

I'm equally excited about how we're making our website, [www.shopmyexchange.com](http://www.shopmyexchange.com), more user-friendly and colorful. Since many retirees, National Guard members, Reservists and other authorized patrons live nowhere near traditional exchanges, having a dynamic website is key to reaching these audiences throughout the year.

Some 450 deployed associates continue to voluntarily serve at locations throughout the Middle East. Their flexibility, as troop strength ebbs and flows throughout the region, is an inspiration to us all. The attention to detail exhibited by the Exchange's deployed managers is regularly lauded by Commanders throughout Iraq and Afghanistan.

Not only are we adapting to shifting footprints, but excelling as we adjust. Exchanges in South Korea, for example, have translated the growing number of dependent shoppers coming to Camps Humphreys, Walker and Casey plus Yongsan Army Garrison and Osan Air Bases into facility upgrades to offer a greater variety and selection of goods. We've spent more than \$2 million improving stores in Korea and plan to spend \$20 million to both expand Camp Humphreys' Exchange and renovate the Exchanges at Osan AB and Camp Walker.



General Casella cuts the ribbon to officially open the new Arby's at Ft Bliss.

In October, I outlined six enduring keys to success that support our mission, vision and strategic focus for the future to our associates. I view these “Commanding General’s Keys to Success” as essential for every associate to incorporate into everyday operations for enhancing shoppers’ experiences.

**1. Provide friendly, engaging, knowledgeable customer service.**

In today’s tough retail environment, we can’t place too much emphasis on quality customer service. Even with the right products in the right places at the right times for the right people, we must offer the best in customer service to ensure we remain our shoppers’ first choice.

**2. Serve the men and women of the military . . . We go where you go.**

We are a part of the lives of our troops, a part of their communities. Whether away or at home, the Exchange is there.

**3. Be the first to market with new items.**

Our patrons want the latest and greatest.

**4. Offer appealing stores, delicious food, great services and enjoyable e-commerce shopping.**

Authorized shoppers will make the Exchange their first choice because of price, value, service and exciting shopping destinations. Expansion and renovations – most recently Freedom Crossing at Fort Bliss, the Kaiserslautern Military Community Center mall at Ramstein AB, Germany and the Kadena AB Exchange on Okinawa, plus other projects in development -- all improve access and variety of goods and services. Our associates are also hard at work on our website, [shopmyexchange.com](http://shopmyexchange.com), to make online Exchange shopping quick, easy and enjoyable.

**5. Keep shelves stocked with desired merchandise.**

Naturally, a shopping destination will create excitement only if the shelves are stocked with popular products in our stores and online.

**6. Ensure prices and operating costs remain low.**

We’re watching the "costs of doing business" with a specific focus on energy, personnel, logistics, supply chain, waste and markdowns. Controlling these and other factors becomes even more critical in a depressed economy.

As you can see, we want to make the Exchange our customer’s first choice.

As I highlight the steps we’re taking towards this objective, I’m reminded of the words of famed composer Irving Berlin: “The toughest thing about success is that you’ve got to keep on being a success.”

If you're reading this, you played an integral part in this organization's past triumphs. In doing so, you have not only created a sturdy bedrock for the Exchange to flourish but also raised the bar mighty high for those of us who have the privilege to serve in your shadow.

Of course, "Enduring Keys," our core values and strategic goals have us reaching for higher ground. As a witness to the solid foundation your efforts poured for us to build upon, I'm extremely optimistic about the impact our actions today will have for the troops of tomorrow.



**Major General Bruce A. Casella**



## Prototype brand openings 'wowing' customers

*A year-end message from Chief Operating Officer Mike Howard*

**A** warm greeting and Happy Holidays to each of you! I hope that you are able to enjoy time with your family and friends during this special time. AAFES is positioned to both compete with other retailers and delight our customers this holiday season.

In fact, the latest Main Store opening at Ft. Bliss continues to "wow" our customers. Grand Opening day sales at Ft. Bliss was \$484, 636 and the Main Store is \$2 million over prior year with a 50% increase. Meanwhile the food facilities and MCSS at Ft. Bliss are trending over 60% above in sales over prior year.

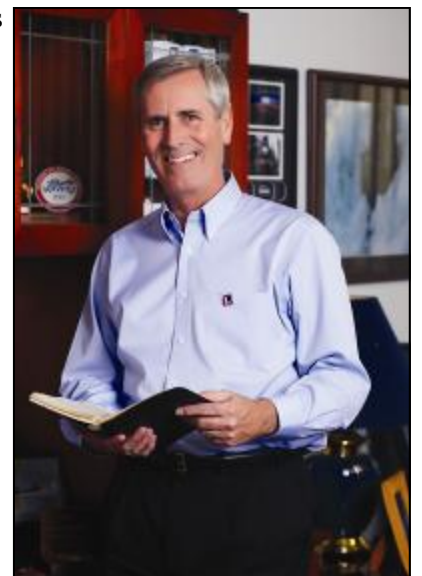
The Tinker image upgrade rolled out the Exchange branding initiative and standards. Opening day sales was \$261,000 with over a 136 percent increase over PY. In addition, the trend since the opening has resulted in a 14 percent sales increase. The next two prototype brand openings are Travis AFB and Ft. Bragg scheduled for the fall of 2011.

Regardless of where Exchange customers shop, customers are delighted with solution selling at Exchange facilities. Customers can easily find print cartridges next to the printers. This helps customers with their buying and increases both revenue and the average transaction amount. The driver/passenger also enables retailers to discern customer's preferences and assist buyers with buying the right combination of goods. The monthly solution selling contests enforces standards and rewards those stores and associates that have mastered the art of solution selling.

Mobile eCommerce is the future and the Exchange eCommerce is on the cutting edge with mobile applications. These applications are applicable to both the Blackberry and I phone. They allow users to research product, log in to shop, use coupons/promo



Tinker AFB Exchange was the first store to display the Exchange image upgrade. Shown above are the new looks in the athletics department, Customer Service and PowerZone. The Telcom Kiosk shown on page 13 offers all the latest cell phones and cellular service.



Mike Howard, COO



codes, text to enter a drawing and see gift reminders via their phone. E-commerce traffic is further increased by the ability to scan a bar code with a smart phone, it then navigates to our site and customers receive a special discount.

In addition, new applications ensure the growth of Exchange Facebook fans with currently over 30,500 users. Facebook fans receive coupons, learn of price reductions and other extra savings for our customers.

The exchange generated new business by offering cellular service online and in the stores. Online is averaging 13 handsets daily while the stores average 5 handset sales daily. The in-store service, The

Telekom kiosks, have rolled out in 30 locations with Ft. Lewis and Ft. Bliss emerging as the top performers. The Exchange home service also offers a Triple Play Bundle Service. Customers can shop for internet, TV and phone service all at once. This is ideal for our transient customers and we are selling an average of 16 packages daily.

AAFES continues to be innovative and I appreciate the opportunity to share the latest with you. Again, I wish you and your family the best. Also, please think of our deployed associates that are serving our customers over this holiday season.

**Michael P. Howard**  
Chief Operating Officer



*Freedom Crossing at Fort Bliss Ribbon Cutting*

Freedom Crossing at Fort Bliss is the first open air shopping center on a military installation and boasts 492,00 square feet.



## Apply for an AREA Scholarship



**LAST YEAR YOUR AAFES RETIRED EMPLOYEE ASSOCIATION (AREA) PLANNED AWARDS OF \$40,000 BUT BASED ON THE QUALITY OF APPLICATIONS INCREASED THAT AMOUNT TO \$47,000 ... AREA AGAIN PLANS AWARDS OF \$40,000 IN 2011 BUT IF YOU DON'T APPLY YOU CANNOT WIN... AREA LOVES TO RECOGNIZE AAFES FAMILY WINNERS!!! WANT TO LEARN MORE??? GO TO: [www.aafes.com/area](http://www.aafes.com/area)**

**DALLAS** – If you have a college-bound senior in high school, or work for AAFES yourself and are a college bound high school senior, the AAFES Retired Employee Association (AREA) may be able to help you get some extra cash for academic related expenses. Each year, the AREA Scholarship Program provides scholarships for students entering their first year of college. AREA scholarship eligibility is based on personal as well as academic criteria. Eligible scholarship candidates can apply for scholarship consideration from January 1 and March 31, 2011.

**Want to learn more about these scholarships?**

**Use one of these:**

**AREA's web site:** Get AREA scholarship program details and the *Application for Scholarship* form by clicking on [Scholarships](http://www.aafes.com/area) at [www.aafes.com/area](http://www.aafes.com/area).

**Email:** Send a message to [gall.tom@verizon.net](mailto:gall.tom@verizon.net).

**Letter:** You may also obtain information by sending a letter to:

AREA Scholarship  
7045 Rembrandt Dr.  
Plano, TX 75093

4. **From the Exchange Post:** by e-mailing the Exchange post at [exchangepost@aafes.com](mailto:exchangepost@aafes.com) or by writing to the Post at AAFES, PO Box 660202, ATTN: PL-C, Dallas, TX 75266-0202.

***AREA - AAFES people helping AAFES people... It's the right thing to do!***

**Thanks from  
a December  
graduate**

Samantha Jablonski, who received an AREA Scholarship in 2007, is now a college graduate. She received a Bachelor of Science in Elementary Education and graduated summa cum laude from the University of Central Florida, College of Education.

"It seems like just yesterday when I was awarded the scholarship and getting ready for

my freshman year at UCF," Samantha said. "I have had three wonderful years at UCF and plan on pursuing my master's degree next year. Thanks for helping me start college on such a great note!"

She is the daughter of Steve and Lee Ann Jablonski of Coppell and received a \$2,500 scholarship from AREA.

## AREA plans to award \$40,000 in 2011 AREA Scholarships

At the October 29 meeting the AREA Board of Directors approved scholarship awards for 2011:

- One \$5,000 - Designated the "Marilyn Iverson Scholarship"
- One \$5,000 - Undesignated
- Ten \$3,000 - Undesignated
- Twelve scholarships totaling \$40,000

In 2010 AREA awarded 17 scholarships totaling \$47,000. The Board initially approved twelve scholarship awards but the Scholarship Committee asked the board to approve five additional awards based on the quality of the applications received. The board unanimously endorsed the proposal. It is plain to see that the AREA BOD has built flexibility into its scholarship program and carefully reviews and endorses awards over and above plan when justified.

So how many scholarships has AREA awarded over the years? I am proud to tell you that 238 deserving students have garnered \$435,795 in awards to since the AREA scholarship program's inception in 1985.

How does AREA support such an ambitious program? It does so through the support of industry partners and from many within our own ranks who choose to contribute to the program or even recognize loved ones with donations to the AREA Scholarship fund. Industry support from and individual donations are key factors to the program's past and future success.

2010 was another banner year for the AREA Scholarship Program:

- 56 applications
- 27 applicants met AREA criteria
- 17 awards were made

How does the scholarship evaluation process work?

- Each application is screened to determine if it meets minimum requirements - "AAFES Employee, Son or Daughter" and minimum academic criteria.
- Qualified applicant files are reviewed privately by each member of the evaluation committee.
- Each committee member ranks qualified applicants using academic achievement, awards, school and outside activity participation, letters of recommendation and finally, an essay themed on why "...I deserve this scholarship..."
- All scores are then aggregated, ties broken and the award roster finalized.
- The AREA President is given the list of awardees and sends each a letter detailing his/her AREA scholarship.

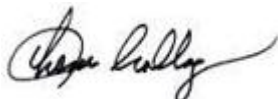
The 2011 evaluation committee will have at least seven AREA/AAFES members who voluntarily take time and apply exceptional judgment to the evaluation process.

While participation in the 2010 AREA Scholarship Program was exceptional, I expect 2011 to be even better...So if you know a qualifying high school senior entering his or her first college semester in the 2011 make sure the student completes an AREA Scholarship application...

The application period runs from January 1, 2011 to March 31, 2011... Full details can be found on the AREA web site at <http://www.aafes.com/area/> ... We love to award monies to deserving students!!!

***AREA - AAFES people helping AAFES people... It's the right thing to do!***

Thomas Gallagher



Director, AREA Scholarship Program

## ALA chapters contribute \$26,000 to scholarship fund

### Hampton Roads ALA raises \$11,000 for AREA Scholarships

The Hampton Roads American Logistics Association had another successful benefit luncheon on December 15, and the AREA Scholarship program received an early holiday gift. Cory Belkov of HRALA reported 155 attendees to heard the AAFES and NEXCOM commanders.

"General Casella gave a great presentation, and we raised \$11,000 for the AREA Scholarship program." Cory said. "The check's in the mail!"

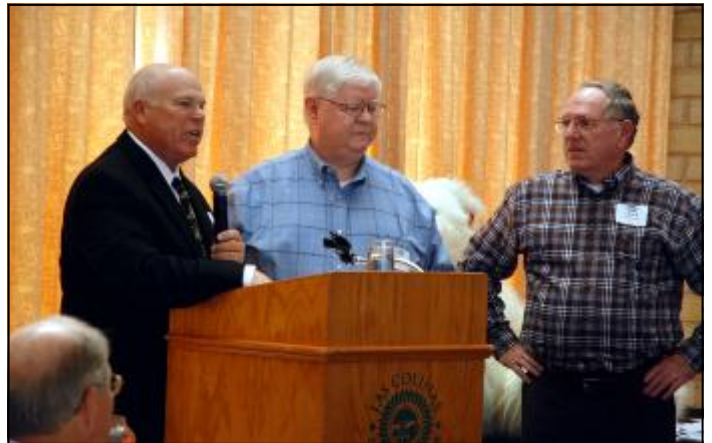


Major General Bruce A. Casella and Cory Belkov

### DFW ALA Chapter donates \$15,000 to benefit scholarships

The DFW American Logistics Association (ALA) presented AREA \$15,000 for the scholarship fund at the chapter's holiday luncheon in December. Rich Krug of ALA presented the check to Tom Gallagher, AREA Scholarship Program director, and Chuck Poffenbarger, AREA president.

The Dallas Cowboy's Hall of Famer Randy White, who conducted the chapter's auction after the luncheon, donated an autographed jersey thanking Exchange personnel for their support of the troops. He presented the jersey to Don Streeter, former AREA president. The jersey will be placed in an AREA section in the display area of the 2nd floor lobby.



Rich Krug, president, of the DFW ALA, and president, Military Sales and Service, a vendor rep firm, presented a check for \$15,000 for the AREA Scholarship Fund to Tom Gallagher and Chuck Poffenbarger of AREA.



Randy White shakes hands with Don Streeter after presenting a signed jersey to thank the Exchange for supporting the troops.



Tom Gallagher takes the podium to say 'thanks' for the DFW ALA chapter's support of AREA's Scholarship Fund.



<b>SCHOLARSHIP DONATIONS</b>		
<b>DONORS</b>	<b>IN MEMORY OF</b>	
Ray Sedberry	Robert Gold	\$100.00
Ray Sedberry	Phil Menteer	\$100.00
Emmy Krivacic	Phil Menteer	\$50.00
John Pasquotto	Fred Steiner	\$50.00
Geraldine Dix	Roger Dix (on the 6 <sup>th</sup> year anniversary of his death.)	\$200.00
<b>DONOR</b>	<b>AS A GENERAL DONATION</b>	
Alice Kondrat	General Donation	\$100.00

Note: \* denotes non-AAFES retiree  
 \*\*denotes Non member of AREA

## IN REMEMBRANCE

**Kenneth L. Anderson**, 88, died July 29 in Arlington, Texas. The HQ AAI Associate retired in 1984.

**Claude H. Knox**, 81, died Aug. 3 in Vancouver, Washington. The Central California Food Manager retired in 1989. Texas. The South Texas Associate retired in 1987.

**Arlene O. Tolleson**, 75, died July 23 in Stockbridge, Georgia. The Atlanta DC Accounting Technician retired in 1995.

**Lidwina K. Ziegler**, 67, died Aug. 10 in Garden Ridge, Texas. The Vicenza AB Store Manager retired in 1998.

**Donald J. Smith**, 81, died Sept. 18 in Grand Prairie, Texas. The former Sales Development and Planning Associate retired in 1989.

**Walter H. Weber**, 89, died Aug. 29 in Portland, Oregon. The former AAFES HQ Engineering Division executive retired in 1983.

**Dottie Henry** of Rockport, TX, died on November 13 after a 10 year battle with Alzheimer's disease. She is survived by James Henry, her husband of 51 years, and family, Tom and wife, Tracy, Jim, Craig and wife, Magna and grandchildren, Chase and Loren. She was inurned at DFW National Cemetery. The family asked for any memorials be as contributions to the Alzheimer's Association National Office, 225 N. Michigan Ave, Floor 17, Chicago, IL 60601, adding, hopefully their research will lead to prevention or cure for this terrible disease.

**Grace Louise Marma**, 84, died October 17 in St. Petersburg, FL. She was born in New York City, where she grew up and went to Hunter Women's College. She received her Master's Degree from Syracuse University. After World War II she moved to Germany and worked in Munich at a resettlement center for displaced persons and for the U.S. Government. She met her husband, Tony, in Germany, where all four of their children were born. She also worked as a journalist and an English professor. In retirement she spent 22 years as an AARP tax-aide volunteer. She was an avid reader and bridge player. She lived in Duncanville, TX for 35 years and in 2008 moved to St Petersburg.

Grace was preceded in death by Tony. She is survived by her children, Kris, Kim, Kathy and Steve; her grandchildren: Kevin, Zane, Colin, Alejandra and Nicole; her daughter-in-law, Marta; her son-in-law, Bob Scherrer; her niece, Marcia Marma and, her faithful feline friend, Carmie.

**Irma Rodman**, 72, wife of Martin Rodman, died on December 2. Irma was born in Prussia under Hitler and was in school during the Stalin regime. She escaped through Berlin before the wall went up and flew to England where she married a Canadian. They moved to Quebec where her two children were born. After her first marriage, she went to Munich where she married Martin Rodman. They came to Dallas where their daughter, Sarah Roses, was born. A daughter, Christina, died in a pool accident.

Irma, always hungry for an education she never had, decided to go to Richland Community College while raising two children. She studied to become a special education teacher. While taking courses in science for nonscience majors, she became fascinated with science and started all over again with courses for science majors. She then went to the University of Texas at Dallas where she majored in biology. After graduation, she got a position as a Lab Technician at the University of Texas at Dallas Medical center where she did experiments in pharmacology. She devoted the rest of her life to immersing her children in the world of two cultures, science and humanities. Daughter, Sarah is now a doctor and her son is an executive in retailing.

**Jennie Irene Rembold**, died in Little Elm, TX, September 16, after a long illness with Alzheimer's. She is survived by Aubrey, her husband of 52 years, and daughters and grandchildren, Lorraine, Kim, Cathy, Trey, Ian, Brannoc and Tori. Aubrey asked that in lieu of expressions of sympathy that memorials be made to the Odyssey Hospice, which cared for her at home for many years. The address is 5440 Harvest Hill Road, Suite 200, Dallas, TX 75230, in memory of Jennie Irene Rembold, Little Elm, TX.

**Phillip Menteer**, 90, of Duncanville, TX, died on October 17, in Dallas. He was born in Wheatland, WY, on December 3, 1919. He was preceded in death by his father and mother, Gilbert and Linnie Menteer, of Carbondale, Illinois. Phill was one of 7 children. His siblings were Glennon, Francis, Jake, Anna Mae, Josephine and George. He is survived by his wife of 62 years, Christiane Menteer. Phill is also survived by two children, Sylvie and husband Linden, Patrick and wife Alice. Two sons, Phillip and Richard preceeded him in death. Phill is survived by seven grandchildren: Cristal, Casey, Mike, Christopher, Nicole, David, and Katie: four great grandchildren: Dakota, Madison, Brandon, and Tyler. Phill served his country during World War II, serving in the U.S. Army in the European Theater from 1940 to 1944. Following the end of the war, he joined AAFES, where he was highly valued for his dedication and excellence of service. Phill retired from AAFES in 1975.

# New AREA Members

**BLEVINS, LYNDIE**  
 602 N. CASA GRANDE CIRCLE  
 DUNCANVILLE TX 75116-2912 Ph:

**CAIN, BRENDA (LARRY)**  
 5686 PIOUS RIDGE ROAD  
 BERKELEY SPRINGS WV 25411-4473 Ph: 304-258-6056

**WALKER, GENE**  
 357 SIMS DRIVE  
 CEDAR HILL TX 75104-2297 Ph: 972-291-4879

## Email Address Changes

**GRIFFIN, MICHAEL A.**  
 torcmtn29@gmail.com

**ENGLISH, JAMES M.**  
 jmenglish1224@aol.com

**WINSTON, BOB**  
 fritts41@grandecom.com

**THOMPSON, JAMES E.**  
 jetnjean@comcast.net

**STALLINGS, SHIRLEY E.**  
 georgestal@gmail.com

**FILLINGER, SHIRLEY E**  
 ffillinger@wor.rr.com

**HARRIS, LEONARD O**  
 lharris2@live.com

**LOWRY, THOMAS J**  
 ilow56@q.com

**SCHOLZ, KATHLEEN M**  
 wjkm@comcast.net

**BENET, JOYCE S**  
 suzan.benet@gmail.com

**INGRAM, DAVID**  
 ingramdavid@bellsouth.net

**WALKER, GENE**  
 cwoealker@aol.com

**CAIN, BRENDA**  
 smithbrk@aol.com

**WALKER, MARGOT**  
 margotwlkr@gmail.com

**YOUNGBLOOD, JACK C**  
 jackcaters@yahoo.com

## Attention: Life Members of AREA *Phase out effective Dec. 2010*

If you were a Life Member of AREA, we need to remind you that the Life Membership Program was discontinued in 1998 because of the financial burden the program was placing on AREA. The program was phased out over the next 12 years, with Life Memberships credited as dues paid up through December 2010.

Now former Life Members will be receiving notices about their annual membership dues. Dues are \$15 annually. A reminder about paying dues appears on the back page of each issue of the newsletter. If you receive your newsletter by mail, the address label shows the dues expiration date. If you're an online reader of the newsletter, we'll send you an email about your dues payment.

We value you as a member of AREA and hope you will continue to benefit by continued affiliation with your retiree organization for many years.

## LISTING CHANGES A(Address) T (Telephone) Z (Zip Code) M (Marital Status)

ALPERT, ETTA 12271 COIT RD APT 1404 DALLAS TX 75251-2314 Ph: 972-661-5432	T
BOUCHARD, DANIEL J (DARLENE) 145 CROSS CREEK WAY HAMPTON GA 30228-2085 Ph: 214-312-4840	A
ENGLISH, JAMES M 1013 SE 21ST ST CAPE CORAL FL 33990-4609 Ph: 850-577-0505	A
FOGG, ELSIE B 288 WESTYN BAY BLVD. OCOEE FL 34761-5009 Ph: 407-614-3583	A
HARRIS, LEONARD O (LYNDA) PSC 577 BOX 806 FPO-AA 96379-0806 Ph:	A
HESLIN, MARY E (HOWARD) 88 N. GRANT AVE YORK NE 68467- Ph: 402-363-0090	T
JOHNSON, WARREN E (SUNIC) 1551 ALA WAI BLVD HONOLULU HI 96815-1043 Ph: 253-269-4479	A
KING, EDWARD L (PAULA) 4416 LEONE TERRACE MANHATTEN KS 66503- Ph: 972-306-7821	A
LONG, TONI 4603 ROSES RUN AIKEN SC 29803-7647 Ph: 803-445-2582	T
MOORE, ROBERT T JR (LOULOU M.T.) 1245 REGENTS PARK CT DESOTO TX 75115-2838 Ph: 972-230-4955	A
PAINTER, DAVID L (CAROLE) 8080 SUMMIT BUSINESS PKWY APT. 129 LAKE SPIVEY GA 30236-5808 Ph: 770-877-1239	A
REYES, ARTURO 1306 BIRCHBROOK ST GRAND PRAIRIE TX 75052-5433 Ph: 856-304-3764	A
SHERROD, ERIKA P O BOX 578473 CHICAGO IL 60657-8473 Ph: 773-539-3882	T
SWAFFORD, WILFRIEDE M 1101 PALM BLVD. NICEVILLE FL 32578-2633 Ph: 850-279-3031	A
THOMPSON, JAMES E (NORMA J) 2452 WEST 875 S SYRACUSE UT 84075-7054 Ph: 801-773-4409	T
WINSTON, BOB (DOLORES) 2290 BANNISTER DR FRISCO TX 75034-7858 Ph: 972-668-0344	T
YOUNGBLOOD, JACK C (YVONNE) 4600 OCEAN DR #207 CORPUS CHRISTI TX 78412-2542 Ph: 361-853-1924	T

## AREA SCHOLARSHIP FUND DONATION FORM

<b>To: AREA</b> <b>P.O. Box 380614</b> <b>Duncanville, TX 75138-</b>	<b>From:</b>  <b>Telephone</b>
--	--------------------------------------

**This donation is (check one box below) \*IF YOU HAVE MORE THAN ONE PERSON TO LIST, USE COMMENTS SECTION BELOW**

<input type="checkbox"/> <b>*In Honor of</b>	(Name) *
<input type="checkbox"/> <b>*In Memory Of</b>	(Name) *
<input type="checkbox"/> <b>An Annual Pledge</b>	
<input type="checkbox"/> <b>Other</b>	

**Send Card to:**

NAME	
ADDRESS	
ADDRESS	
CITY, STATE, ZIP CODE	
TELEPHONE	

Amount of donation (check enclosed)	\$
-------------------------------------	----

I wish to pledge \$\_\_\_\_\_ each year to the AREA Scholarship Fund. My donation for the current year is enclosed.

Your donation will be acknowledged to both the donor and to the recipient or the survivor. All donations are income tax deductible.

<b>DONOR NAME (Printed)</b>	<b>SIGNATURE</b>

**COMMENTS:**

<p>* In memory of: _____</p> <p>In memory of: _____</p> <p>In memory of: _____</p> <p>In memory of: _____</p>	<p>* In honor of: _____</p> <p>In honor of: _____</p> <p>In honor of: _____</p> <p>In honor of: _____</p>
---	---

## MEMBERSHIP UPDATE FORM

Type of Change (Check All Boxes Below That Apply)

Address	<input type="checkbox"/>	Telephone	<input type="checkbox"/>	FAX	<input type="checkbox"/>
E-mail	<input type="checkbox"/>	Marital Status	<input type="checkbox"/>	Other	<input type="checkbox"/>

Enter New Address in "Current Address" block BELOW and List Other Changes Here--

(Printed Name) \_\_\_\_\_ (Signature) \_\_\_\_\_ (Date) \_\_\_\_\_

Check here if you would like to be put on the mailing list for future membership directories, which are published in even-numbered years and provide you a listing of names and addresses of AREA members.

**TO: AREA (ATTN: Membership Director)**  
**P.O. Box 380614**  
**Duncanville, TX 75138-0614**

**CURRENT ADDRESS:**

### USEFUL TELEPHONE NUMBERS

The following telephone numbers are provided as a convenience to members wishing to contact certain HQ AAFES offices and the AAFES Federal Credit Union.

**HQ SWITCHBOARD**

(214) 312-2011

**FOR RETIREMENT and GROUP INSURANCE BENEFITS:**

HQ. AAFES BENEFIT BRANCH REPRESENTATIVES (800) 519-3381

**GENERAL COUNSEL:**

COLONEL ERIC E. WEISS, USAF (214) 312-3126

**EXCHANGE POST:**

BARBARA KIRSCH (214) 312 3831

**SALES TABLOIDS:**

LEAH MILLER (800) 733-5142

**ID CARD, PRIVILEGES**

HR-L/H Servicing Personnel Office (214) 312-3330  
 ID Cards issued Monday, Wednesday, Thursday and Friday from 7:30-10 a.m.

**DOD VEHICLE STICKERS:**

DOD stickers are issued in AD from 7:30-11 a.m. on Monday, Wednesday, Thursday and Friday.

**AAFES FEDERAL CREDIT UNION: TOLL FREE SERVICE**

NORTH AMERICA (800) 452-7333  
 UNITED KINGDOM 0800-89-7490  
 GERMANY 0130-81-1187

**FOR OTHERS NOT LISTED:**

PAT WEAVER (972) 780-9810

For other information, check out the AAFES Web site at: <http://www.aafes.com> and the AREA web site <http://www.aafes.com/area>



## *Tips for you to stay healthy when you fly*

Today's retirees are always on the go, so before you take your next trip take a few minutes to look at these ideas for staying healthy when flying. If you missed the recent email from Aetna, here are some tips to make your next flight more healthful and enjoyable when you arrive at your destination.

**Dehydration is a concern.** Symptoms of dehydration can include dry mouth, dry nose and eyes, headache, nausea, muscle cramps, weakness, and lethargy.

- Drink lots of water before and during your flight. Once you pass security, buy a large water bottle.
- Avoid caffeinated and alcoholic beverages.

Use eye drops and saline spray for your nose. (Remember those carry-on size restrictions!)

**Be germ-smart.** Practice good hygiene--wash your hands often. Also avoid touching your mouth, nose and eyes. They're the most common points for a virus to enter the body.

- Use disinfectant wipes on tray tables, seat arms, the window and especially the bathroom.
- Try to avoid using the restroom on a short flight.

Always wash your hands thoroughly, and use antiseptic gel when you get back to your seat.

**Ouch! Take care of your ears.** Rapid changes in air pressure can cause ear discomfort or pain. Chewing gum, yawning and swallowing can help ease symptoms.

**Avoid a serious problem.** Sitting in an upright position for a long time reduces blood flow in the legs. This, combined with dehydration, can lead to blood clots. These clots can cause pain and swelling in the legs. And they can move to the lungs, which can be serious. Reduce your risk:

- Drink plenty of fluids.
- Exercise at your seat, tensing and relaxing the leg muscles frequently.
- Every hour or so, get up and walk the aisle.



**Get your health information on the go.** Just use Aetna Mobile on your web-enabled cell phone to find doctors and hospitals, check your health records, view your member ID card, price drugs and more. Just check your personal health record on Aetna Mobile for info on your past office visits and prescriptions.

Aetna Mobile is also a perfect tool for everyday use. You start by pulling up the free Aetna Mobile app, doing a search for your doctor; and then adding the doctor to your contacts. Then you can use the app to call the doctor's office. If you're in the office and the doctor or nurse asks about that allergic reaction to foods or medicine you had once. Just check your personal health record on Aetna Mobile for info on your past office visits and prescriptions.

Aetna Mobile stays current because whenever you see your doctor, fill a prescription or get lab work done, the site gets automatically updated with the new details. Do it all directly from your mobile phone. There's already an iPhone app, and a BlackBerry app is coming soon, too.



**AAAFES RETIRED EMPLOYEES ASSOCIATION**  
**P.O. Box 380614**  
**DUNCANVILLE, TX 75138-0614**

PRSRST STD  
 US POSTAGE PAID  
 DALLAS, TX  
 PERMIT #1478

**DUES ALERT!** Please check the expiration date above. If the date is December 2010 (or earlier) please send your \$15 dues PAYABLE to AREA. **ATTENTION: LIFE MEMBERS, PLEASE SEE STORY ON PAGE 19**

**AAAFES RETIRED EMPLOYEES ASSOCIATION**



**Help Us Save Money!**

**Get the Newsletter online rather than through the mail.**

**The difference in cost is significant\*, and you'll enjoy these advantages: Get the Newsletter first, before anyone else. E-mail is faster than snail-mail. The Adobe Acrobat (.pdf) format is in color and you can transfer/save the file as you desire.**

\*Per copy print cost at \$1.42 + mailing at \$0.57 = \$1.99 cost per copy. We now have 118 members receiving the Newsletter via e-mail, saving us \$939.28/year. Do yourself and us a favor – try Newsletter e-mail.

**Send an e-mail to me at [cpoffen@yahoo.com](mailto:cpoffen@yahoo.com) and state that you would like to get the Newsletter on line and I'll do the rest. Give it a try. If you don't like it, we can always add you back to the snail-mail list.**