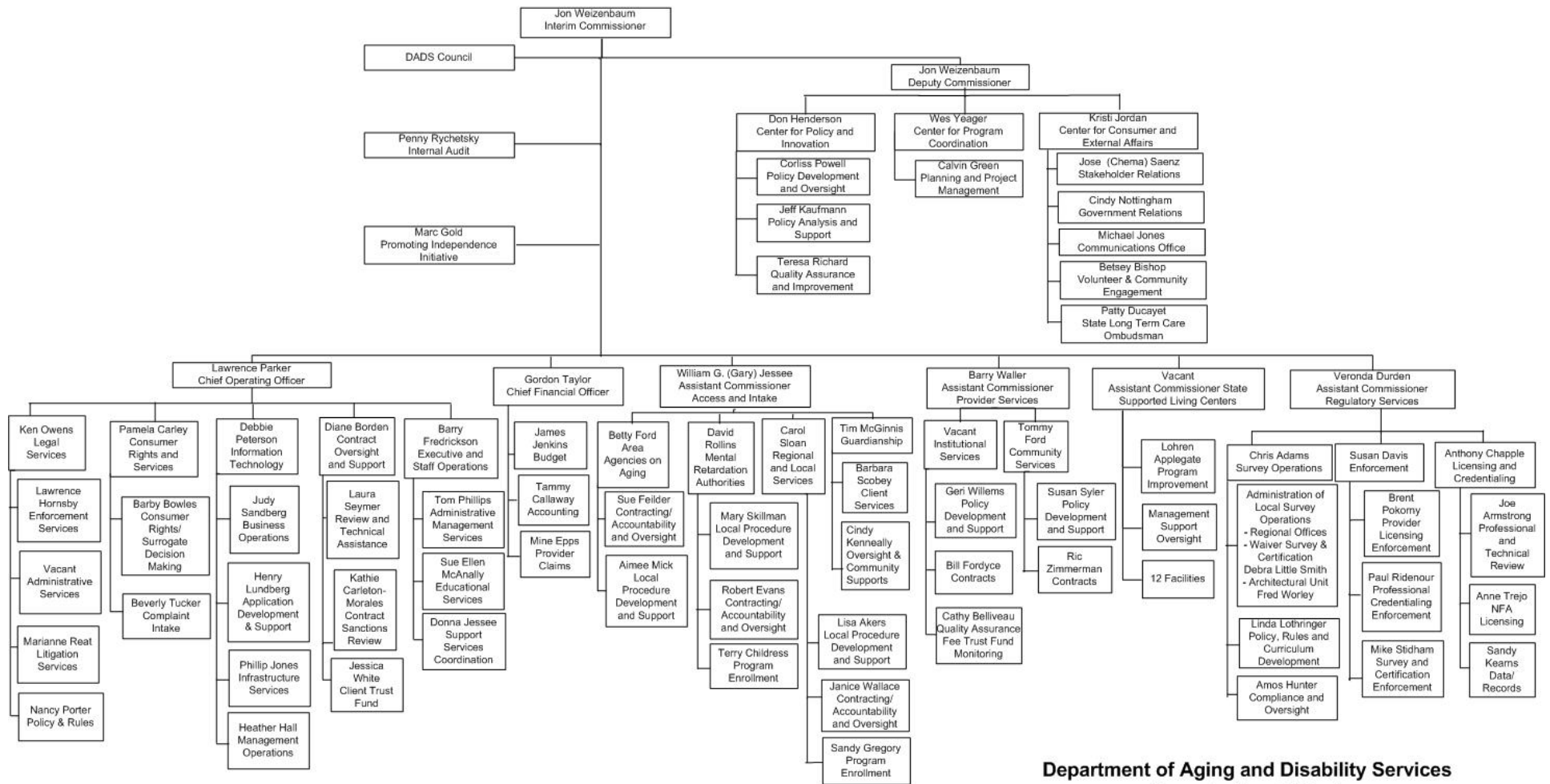


Texas Department of Aging and Disability Services Organizational Chart

September 16, 2009



Department of Aging and Disability Services
Organizational Chart
September 16, 2009

**Texas Department of Aging and Disability Services
Organizational Chart
September 16, 2009**

Interim Commissioner, Jon Weizenbaum

Deputy Commissioner, Jon Weizenbaum

- Center for Policy and Innovation, Don Henderson, Director
 - Policy Development and Oversight, Corliss Powell
 - Policy Analysis and Support, Jeff Kaufmann
 - Quality Assurance and Improvement, Teresa Richard
- Center for Program Coordination, Wes Yeager, Director
 - Planning and Project Management, Calvin Green
- Center for Consumer and External Affairs, Kristi Jordan, Director
 - Stakeholder Relations, Jose (Chema) Saenz
 - Government Relations, Cindy Nottingham
 - Communications Office, Michael Jones
 - Volunteer and Community Engagement, Betsey Bishop
 - State Long-term Care Ombudsman, Patty Ducayet

Chief Operating Officer, Lawrence Parker

- Legal Services, Ken Owens, General Counsel
 - Enforcement Services, Lawrence Hornsby
 - Administrative Services, Vacant
 - Litigation Services, Marianne Reat
 - Policy and Rules, Nancy Porter
- Consumer Rights and Services, Pamela Carley, Director
 - Consumer Rights/Surrogate Decision Making, Barby Bowles
 - Complaint Intake, Beverly Tucker
- Information Technology, Debbie Peterson, Director
 - Business Operations, Judy Sandberg
 - Application Development and Support, Henry Lundberg
 - Infrastructure Services, Phillip Jones
 - Management Operations, Heather Hall
- Contract Oversight and Support, Diane Borden, Director
 - Contract Review and Technical Assistance, Laura Seymer
 - Contract Sanctions Review, Kathie Carleton-Morales
 - Client Trust Fund, Jessica White
- Executive and Staff Operations, Barry Fredrickson, Director
 - Administrative Management Services, Tom Phillips
 - Educational Services, Sue Ellen McAnally
 - Support Services Coordination, Donna Jessee

Chief Financial Officer, Gordon Taylor

- Budget, James Jenkins
- Accounting, Tammy Callaway
- Provider Claims, Mine Epps

Assistant Commissioner Access and Intake, Gary Jessee

- Area Agencies on Aging, Betty Ford, Director
 - Local Procedure Development and Support, Aimee Mick
 - Contracting/Accountability and Oversight, Sue Feilder
- Mental Retardation Authorities, David Rollins, Director
 - Local Procedure Development and Support, Mary Skillman
 - Contracting/Accountability and Oversight, Robert Evans
 - Program Enrollment, Terry Childress
- Regional and Local Services, Carol Sloan, Director
 - Local Procedure Development and Support, Lisa Akers
 - Contracting/Accountability and Oversight, Janice Wallace
 - Program Enrollment, Sandy Gregory
- Guardianship, Tim McGinnis, Director
 - Client Services, Barbara Scobey
 - Oversight and Community Support, Cindy Kenneally

Assistant Commissioner Provider Services, Barry Waller

- Institutional Services, Vacant
 - Policy Development and Support, Geri Willems
 - Contracts, Bill Fordyce
 - Quality Assurance Fee Trust Fund Monitoring, Cathy Belliveau
- Community Services, Tommy Ford
 - Policy Development and Support, Susan Syler
 - Contracts, Ric Zimmerman

Interim Assistant Commissioner State Supported Living Centers, Barry Fredrickson

- Program Improvement, Lohren Applegate
- Management Support Oversight
- 12 State Supported Living Centers

Assistant Commissioner Regulatory Services, Veronda Durden

- Survey Operations, Chris Adams, Director
 - Administration of Local Survey Operations
 - Regional Offices
 - Waiver Survey and Certification, Debra Little Smith
 - Architectural Unit, Fred Worley
 - Policy, Rules and Curriculum Development, Linda Lothringer
 - Compliance and Oversight, Amos Hunter
- Enforcement, Susan Davis, Director
 - Provider Licensing Enforcement, Brent Pokorny
 - Professional Credentialing Enforcement, Paul Ridenour
 - Survey and Certification Enforcement, Mike Stidham
- Licensing and Credentialing, Anthony Chapple, Director
 - Professional and Technical Review, Joe Armstrong
 - NFA Licensing, Anne Trejo
 - Data/Records, Sandy Kearns