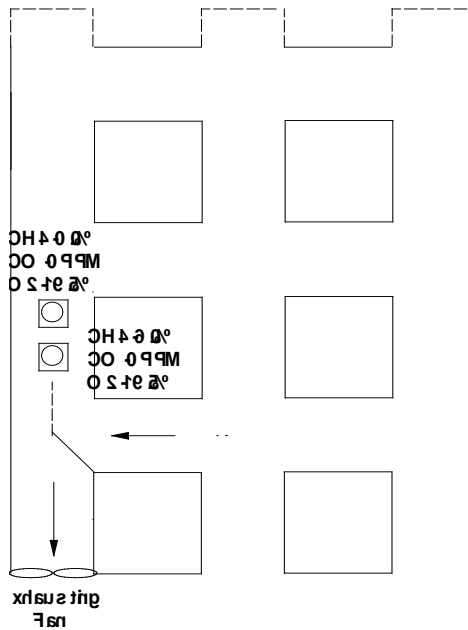


Interpretations of B-Card: Rule 48

Question 1

In this case the team uses a temporary stopping in conjunction with a line curtain to attempt to clear a concentration of methane in the No. 1 entry. The temporary is built in the outby crosscut at a diagonal and the line curtain extended from the temporary to the gas placard.



Rule 48 defines an exception that allows one circumstance where ventilation structures may be placed other than perpendicular across an entry, crosscut, or opening. The exception is "Brattice frames and brattice cloth, may be used to erect a line curtain which can only extend from a face, barricade, or airtight separation to the outby intersection."

Thus the rules allow the team to clear a gas in this manner provided that the line curtain extends from an airtight separation.

In the example shown on the left, an airtight separation does not exist.

1: The question is: what do the judges do in this case?

The judges could clear the gas concentration which I think is wrong. The judges could not clear it or they could pick the card up and move it back a couple of feet. What if the line curtain is within 5 feet of the air clear placard (and I know we don't call it that now!)?

1(A): If the team builds a temporary over the air clear placard should the gas be cleared?

Perhaps the logical solution is to clear the area within 5 feet of the end of the line curtain and if the air clear placard is within 5 feet then all the gas may be cleared. If the air clear placard is more than 5 feet from the line curtain then only clear the contaminant

within the 5 feet distance. This would require moving the placard showing the contaminant back the 5 feet distance.

However, technically speaking, by even trying this, the team should be discounted 10 points. The only way to follow the rules is NOT clear the contaminant and to discount a team 10 points. But if a team tries this and has everything constructed properly and we don't clear the gas, they will be confused!

What do you think?

Q.(1)

A: The team has violated Rule 48, as it states, "Brattice frames and brattice cloth may be used to erect a line curtain which can only extend from a face, barricade, or airtight separation to the outby intersection." Clearly the above situation is an open-entry and this application does not apply. The team should be discounted for the infraction, and the gas should not be cleared.

Q.(1)(A)

A: The rules intent was to allow the team to ventilate a contaminant from the front of a structure that was already in-place, utilizing brattice frames, as necessary. Therefore, the team should not be allowed to erect a temporary stopping across a placard to clear the contaminant.