



“Picture This...Safety Initiative”

1. Purpose of this safety initiative is to engage employees in the observation process and encourage employee recognition of hazards both in the workplace and off the job. This activity will require employees to use the skills and training provided by WCH to recognize both safe and unsafe acts and conditions and actively improve the conditions or behaviors if possible.
2. Employee Tasks
 - a. Conduct and continuously improve observation skills
 - b. Take a photo of your observation to document the act or condition
 - c. Go to the S&H Web Site (add directions to the electronic form) to access and submit the Observation Card
 - d. Provide a caption/story to accompany the act or condition
 - e. Determine the category of the observation (listed on the “*Picture This*” Observation Card)
 - f. Include employee name, project location, date of observation and the location of the observation.
3. Rules
 - a. All photos must be original photos...no photos from outside sources such as newspapers, internet, TV will be accepted.
 - b. Photos may be “generated” to demonstrate an unsafe act or condition (i.e., toys on stairs, not using the handrail, water spill on the floor, etc.). However, photos that are generated cannot create/inflct harm in order to generate/obtain the photo. Personnel must not be put themselves or others at risk to obtain the photo.
 - c. Work related photos of non-WCH work will be considered for this campaign. If unsafe acts or conditions are observed during the normal course of business for WCH, use the established procedures and processes for notification, corrective actions, and documentation of these issues.
 - d. Photos must be submitted to the ^S&H Communications mailbox along with a completed observation card.
 - e. All photos submitted will be considered “released” to WCH for use of the S&H Department for training and education purposes.
 - f. Contact Kristine Shimer-Geckle at 509-376-4994 with any questions or concerns with this campaign.
4. Duration of Campaign
 - a. Campaign will launch November 9, 2009 and run until February 4, 2010.
 - b. Final awards and recognition will be provided at the end of campaign celebration.
5. Awards-Individual

- a. Photos will be evaluated on a bi-weekly basis with award winners announced through the S&H Weekly Roundup. Awards categories include:
 - i. Most Unsafe
 - ii. Most Safe
 - iii. Funniest
 - iv. Most Unusual
 - v. Most Applicable to WCH work scope
 - vi. Honorable Mention
 - b. Award consideration will be dependent upon the type and quality of the photo and those entries that provide details, story, and/or captions to accompany their entry.
 - c. Employees must indicate their name, project location and date of the observation in order to be eligible for the awards associated with this safety initiative.
6. Awards-Project
- a. If the entire WCH contract does not suffer a recordable injury, each job location will review the photos and submitted by their project employees and earn a recognition award and celebrate our project success. Light refreshments will supplement the celebration.
 - b. The start of the campaign and the end of the campaign dates will constitute the duration of this safety initiative. Any recordable incident within the duration of the campaign will disqualify the overall WCH contract recognition awards.
7. Final Objective-provide examples of both unsafe and safe acts and conditions for all aspects of the WCH employee's lives and to determine ways to improve and/or reinforce the observations that were documented. S&H will use the information provided by employees to generate safety information, topics, focus behavioral campaigns and overall project initiatives to continuously improve the safety of employees both on and off the job.



8. Observation Card



***"Picture This"* Observation Card**

Employee Name Date of Observation

Employee Location/Project

Location of Observation

Category of Observation	<input type="checkbox"/> Work (off the job)	<input type="checkbox"/> Sports/Entertainment	<input type="checkbox"/> Outdoors/ Recreation/ Travel	<input type="checkbox"/> Home
Type of Observation	<input type="checkbox"/> Unsafe Act	<input type="checkbox"/> Unsafe Condition	<input type="checkbox"/> Safe Act/ Condition	
Observation Related to:	<input type="checkbox"/> Signs/Signals/ Barricades	<input type="checkbox"/> Slips/Trips/Falls	<input type="checkbox"/> Overhead Hazards	<input type="checkbox"/> Use of Equipment
	<input type="checkbox"/> PPE (necessary or required)	<input type="checkbox"/> Weather Conditions	<input type="checkbox"/> Contact with Substance/ Material	<input type="checkbox"/> Electrical Hazards

Action Taken to Correct Unsafe Act of Condition (if applicable)

PROOF

Narrative Caption/Story (Optional)



<p style="text-align: center; margin-bottom: 10px;">Click the box below to attach photo</p> <div style="border: 1px solid #ccc; height: 250px; width: 100%;"></div>	<p style="text-align: center; margin-bottom: 10px;">Comments</p> <div style="background-color: #e0e0ff; border: 1px solid #ccc; height: 250px;"></div>
---	--

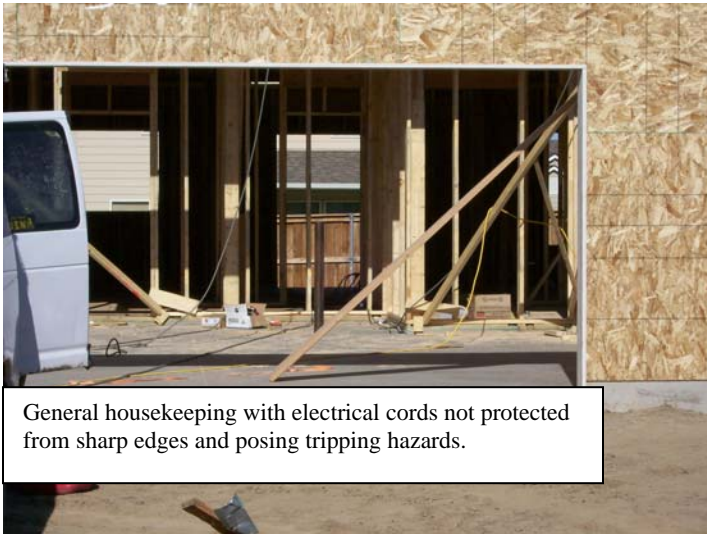
Examples...



Old dock with caution tape as the only protection provided to keep personnel out of this area.



Sign located on the shore of the Columbia River.



General housekeeping with electrical cords not protected from sharp edges and posing tripping hazards.



Sign as seen by boats on the Columbia River.



No fall protection or PPE used when raising the wall for the second floor of a residential structure



"I got caught

doing my 360

WALKAROUND"

Aiming for **4 Million** Safe Hours Worked





***"Seatbelts are
Nothing to
Snicker At"***



PICTURE THIS !