

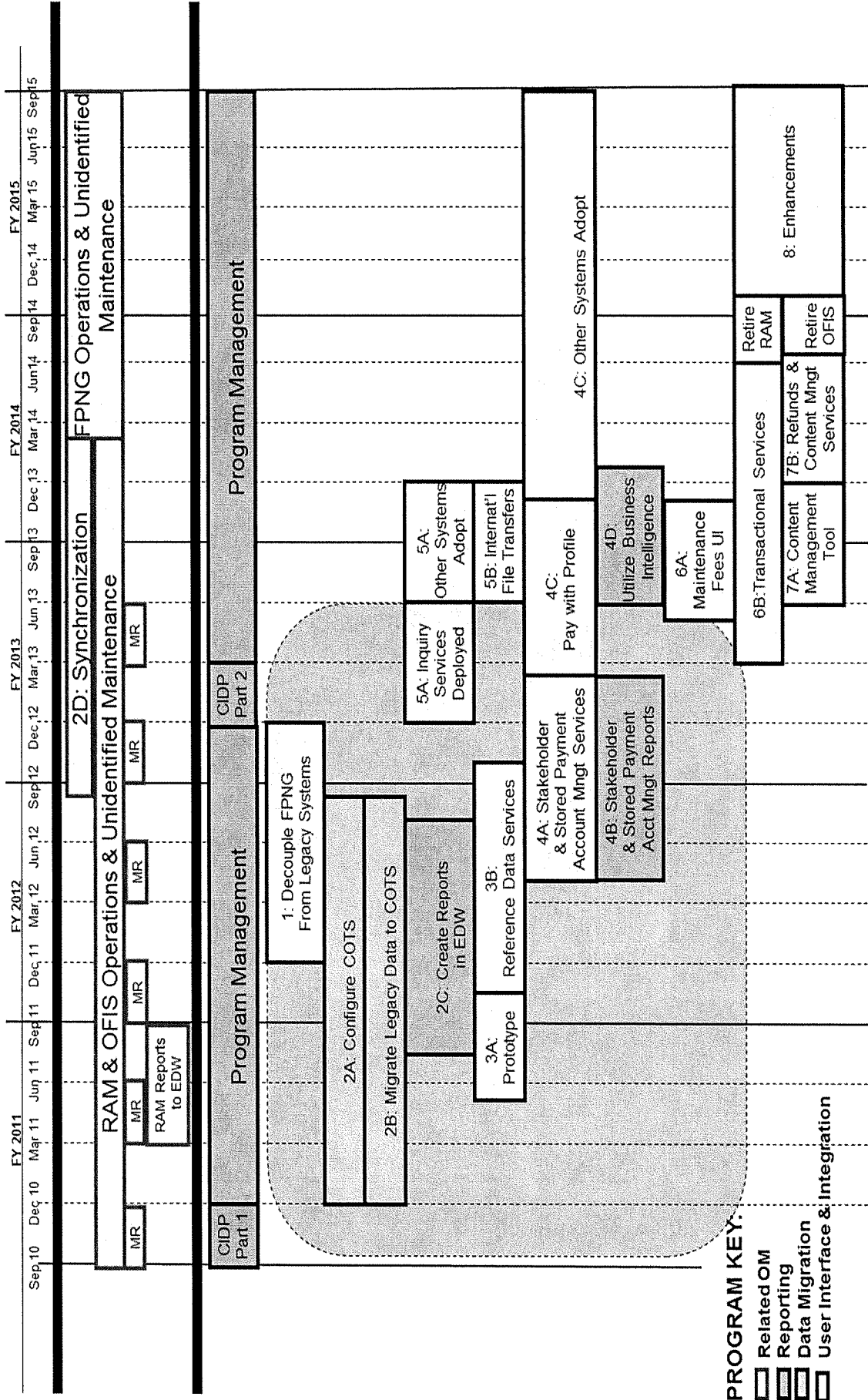
## Fee Processing Next Generation (FPNG) Investment Portfolio

Data Migration	
Configure COTS	Configure the Momentum product to perform the functions of a revenue subsidiary ledger.
Migrate Legacy Data to COTS	Migrate the legacy revenue data to the Momentum product. Create a synchronization job between the legacy revenue system and the Momentum product in order to keep the two in synch throughout the phased transition period.
Reporting	
Create Reports in the Enterprise Data Warehouse (EDW)	Implement the Business Objects ETL Tool and bring revenue data from the Momentum product to the EDW. Create revenue reports using the Business Objects Reporting Tool against the EDW. Document the Information Strategy for the remainder of the FPNG investment.
Stakeholder & Stored Payment Account Management Reports	Follow the Information Strategy to provide reporting capability to internal and external stakeholders.
Utilize Business Intelligence	Follow the Information Strategy to provide business analytics capabilities to internal and external stakeholders.

User Interface & Integration	
Decouple FPNG from Legacy Systems	Replace database links between the legacy revenue system and other legacy systems with webservices to ease transition to next generation technologies.
Prototype	Set up a development environment using the proposed technology stack in order to gain experience with the technology. Gather an Agile team and document the best Agile process based upon lessons learned. Perform preliminary tests on the Momentum product native webservices. Create the base architecture on which future projects can build.
Reference Data Services	Add reference data tables to the base architecture. Implement internal user authentication and role-based access solutions. Create user interface and integration services for sign-on and reference data table maintenance.
Stakeholder & Stored Payment Account Management Services	Add stored payment account tables to the base architecture. Implement external user authentication and role-based access solutions. Associate stored payment accounts (credit card, electronic funds transfer, and deposit account) to stakeholder accounts. Create user interface and integration services for sign-on and stored payment account table maintenance.
Pay with Profile	Allow a user to pay with any stored payment account associated with their stakeholder account.
Inquiry Services	Repoint all systems consuming inquiry services from the legacy revenue system to the FPNG solution.
International File Transfers	Streamline and automate the association of the business and accounting side of international transaction exchange.
Maintenance Fees UI	Create user interface and integration services for calculating and paying maintenance fees.

Transactional Services	Repoint all systems consuming transactional services from the legacy revenue system to the FPNG solution. Implement COTS integration between the Treasury credit card and electronic funds transfer processing system (Pay.Gov) and the Momentum product.
Content Management Tool	Implement COTS integration between a Content Management solution and the Momentum product.
Refunds & Content Management Services	Create user interface and integration services for requesting a refund on-line or via mail. Implement workflow, approval, and content management services for the refund process.
Enhancements	Streamline and automate the association of the business and accounting side of order modifications and order completion.

# FEE PROCESSING NEXT GENERATION (FPNG) PORTFOLIO



**PROGRAM KEY:**  
 Related OM  
 Reporting  
 Data Migration  
 User Interface & Integration

## **FPNG UI&I Technology Stack**

Technology need	Solution	Notes
Operating system	Red Hat Enterprise Linux 6.x	USPTO Standard
File system	ext4	USPTO Standard
Virtualization (type 1 hypervisor)	Red Hat Enterprise Linux 6.x: KVM	USPTO Standard
Server provisioning	RHN Satellite 5.x	USPTO Standard
Virtualization management	RHEV-M 2.x	USPTO Standard
Load Balancer	IBM Edge Server 7	USPTO Standard
Application server	JBoss SOA-P 5.1	Follows PE2E
Web server	JBoss EWS 1.0.2	Follows PE2E
Java servlet/JSP container	JBoss EAP 5.1	Follows PE2E
Object-relational mapping & persistence framework	JBoss EAP 5.1: Hibernate	Follows PE2E
Logging	JBoss EAP 5.1: JBoss 5.1 logging API	Follows PE2E
Rules engine	JBoss Rules 5.1	Follows PE2E. Part of JBoss SOA-P 5.1
Enterprise service bus (ESB)	JBoss ESB 4.9	Follows PE2E. Part of JBoss SOA-P 5.1
Database	Oracle 11g, release 2	USPTO Standard
Version control	Apache Subversion 1.6.x feeding ClearCase	Follows PE2E
Build management	Apache Maven 3.0.x feeding ClearCase	Follows PE2E
Continuous Integration Management	Hudson 1.39x	Follows PE2E
Build artifact repository	Nexus 1.9.x feeding ClearCase	Follows PE2E
Search engine	N/A	
Business Process Management	JBoss jBPM 3.2.10	Follows PE2E. Part of JBoss SOA-P 5.1
Development Framework	Spring	Follows PE2E
Development IDE	Eclipse, JBoss Developer Studio 5.1	Follows PE2E
JavaScript toolkit	Smart GWT	
Automated Testing	TBD	
Requirements Management	IBM Rational ReqPro, SharePoint List during Sprint LifeCycle	USPTO Standard
Identity Management	Kerberos	USPTO Standard
XML parsing & transformation	JBoss JAXP 1.1	Follows PE2E
Physical Servers	Dell R910	USPTO Standard
Primary Deployment language	Java 1.6 (64 bit)	Follows PE2E