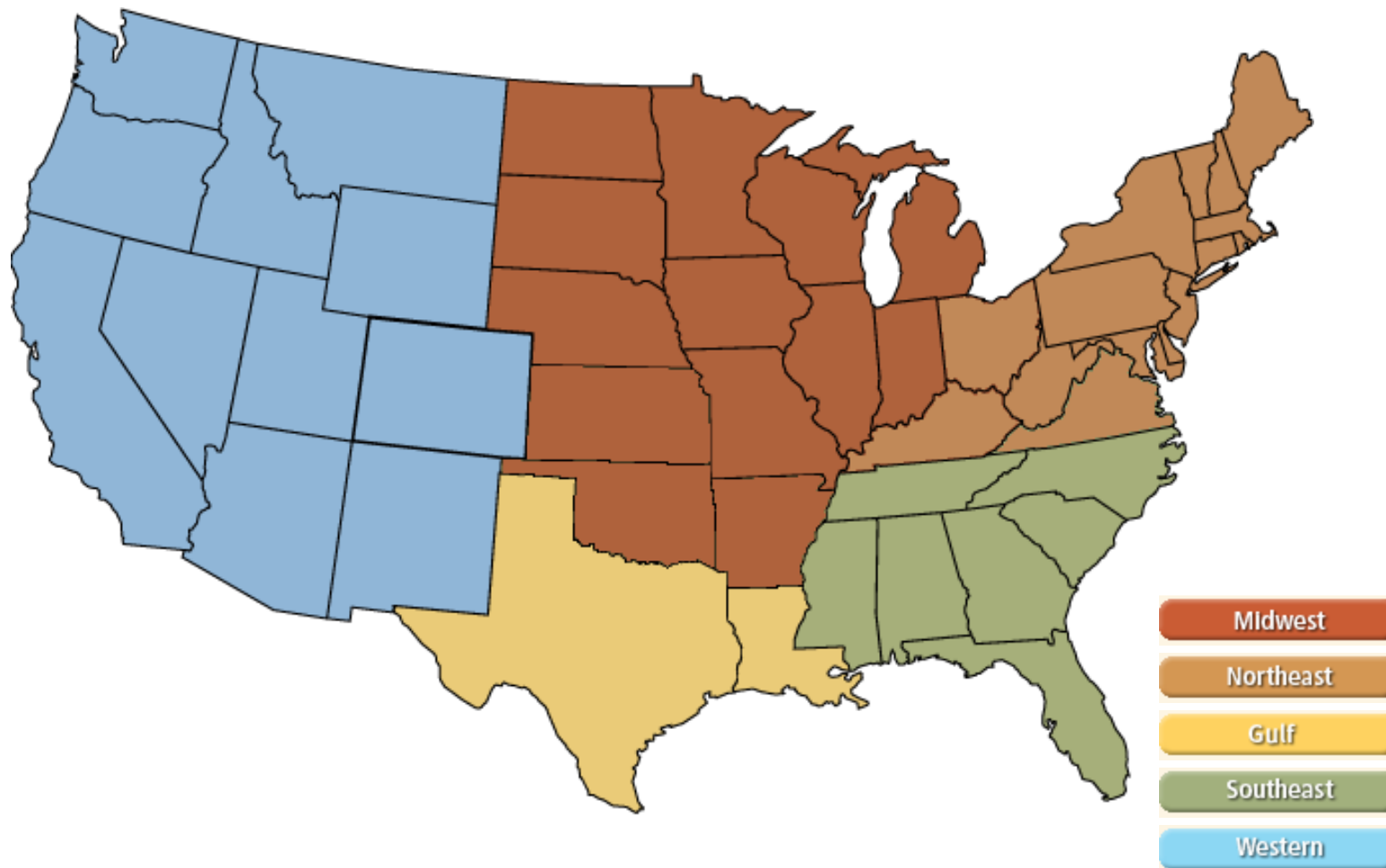
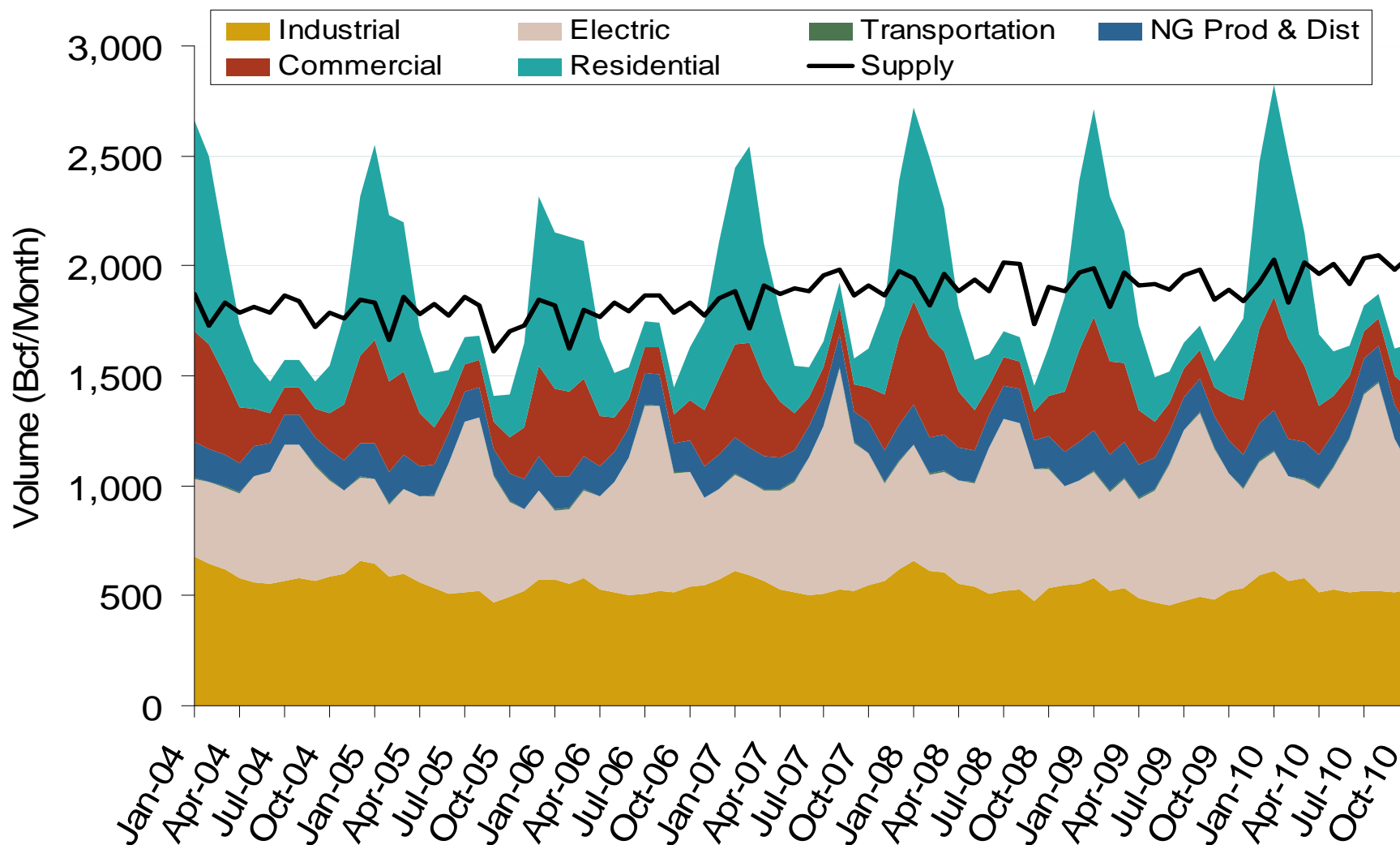


Natural Gas Market National Overview



Annual U.S. Natural Gas Consumption by Sector

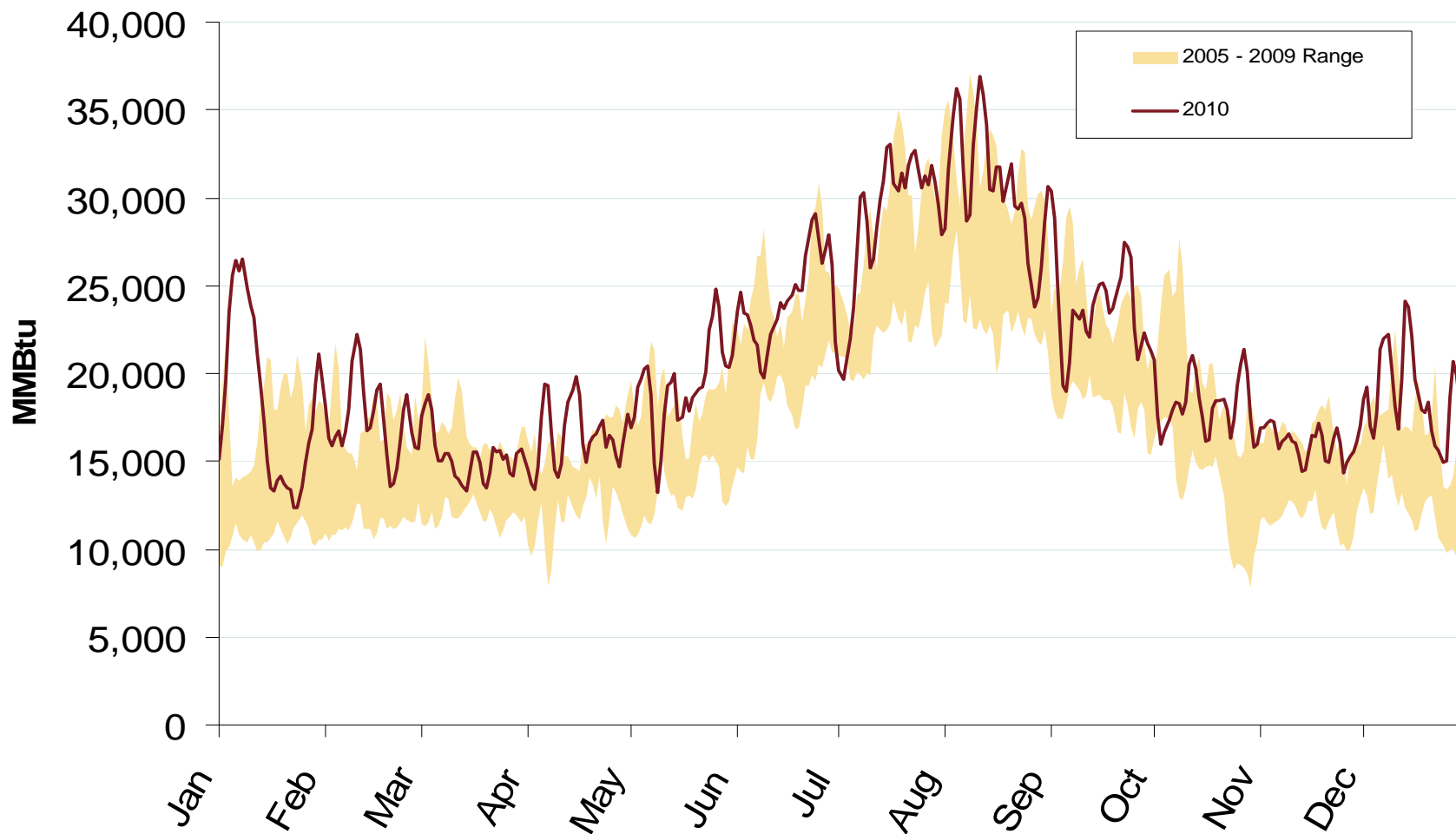


Note: Supply includes lower 48 state production, net pipeline imports, and LNG imports.

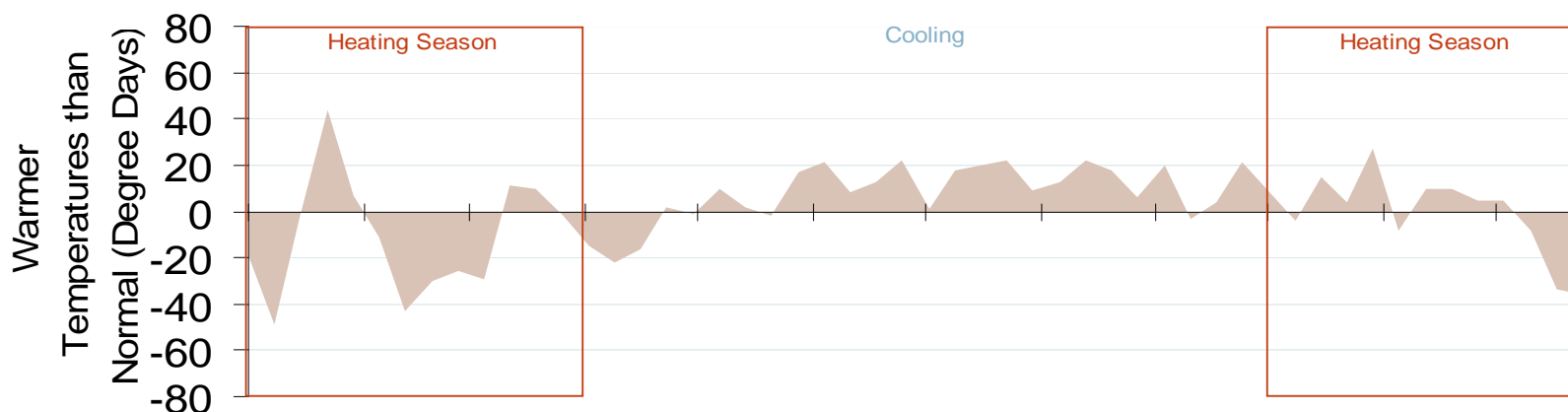
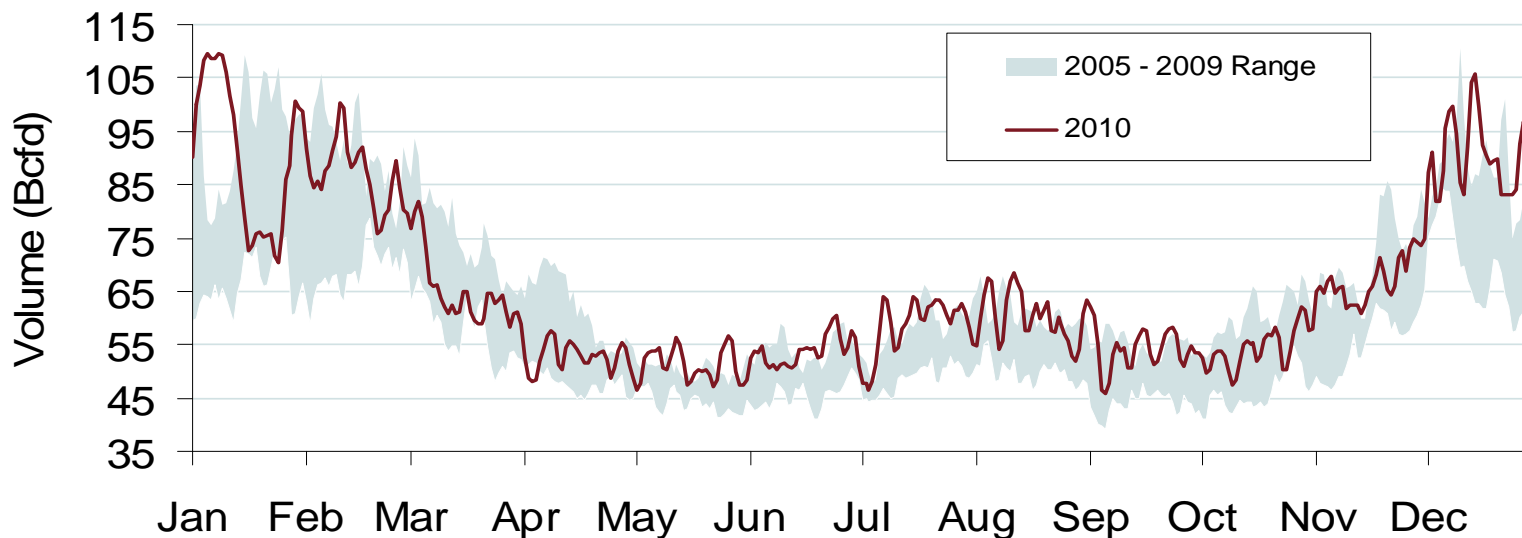
Source: Derived from EIA data
January 2011

Updated: January 12, 2011

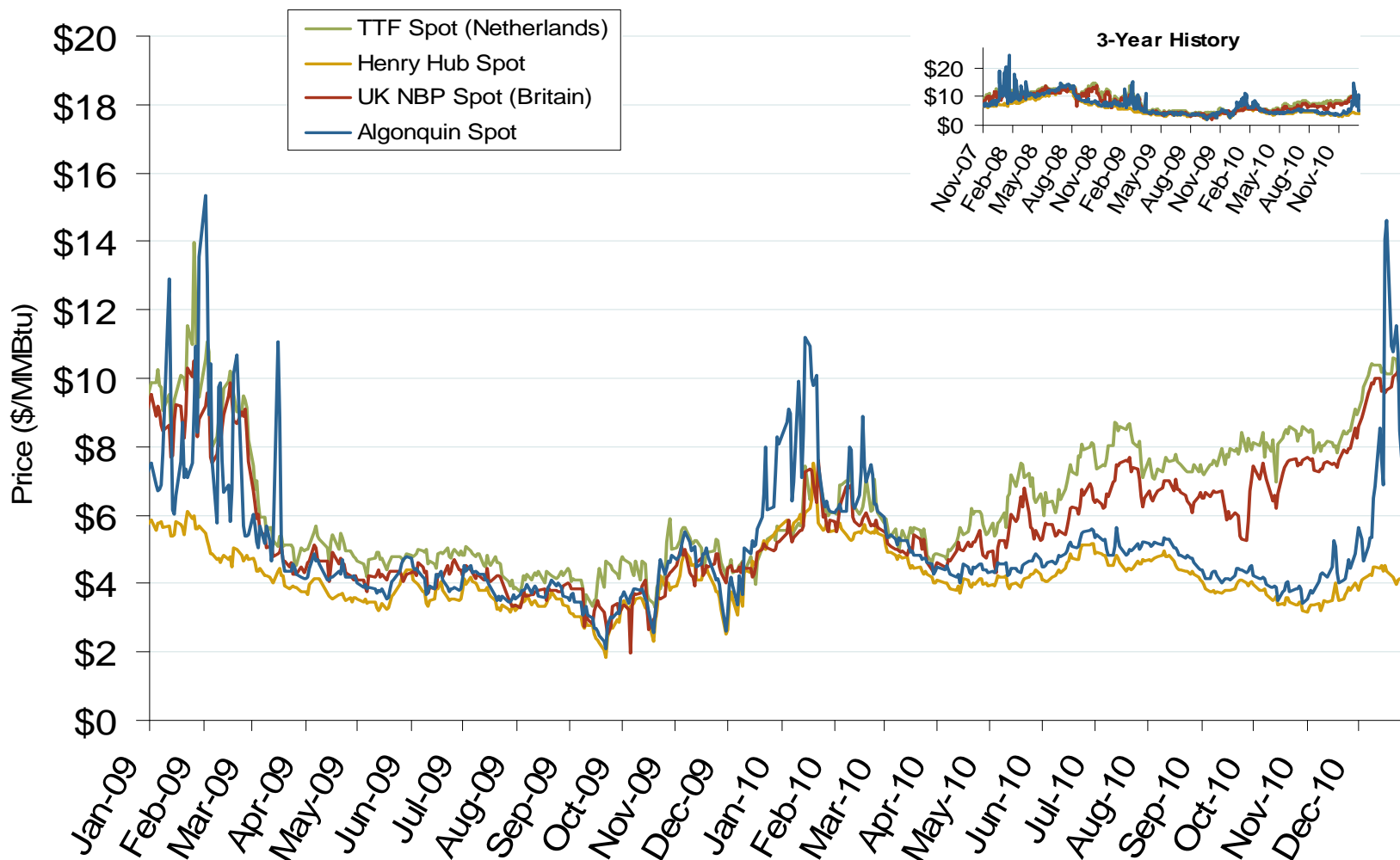
U.S. Natural Gas Consumption for Power Generation



Total U.S. Natural Gas Demand (All Sectors) and Temperatures

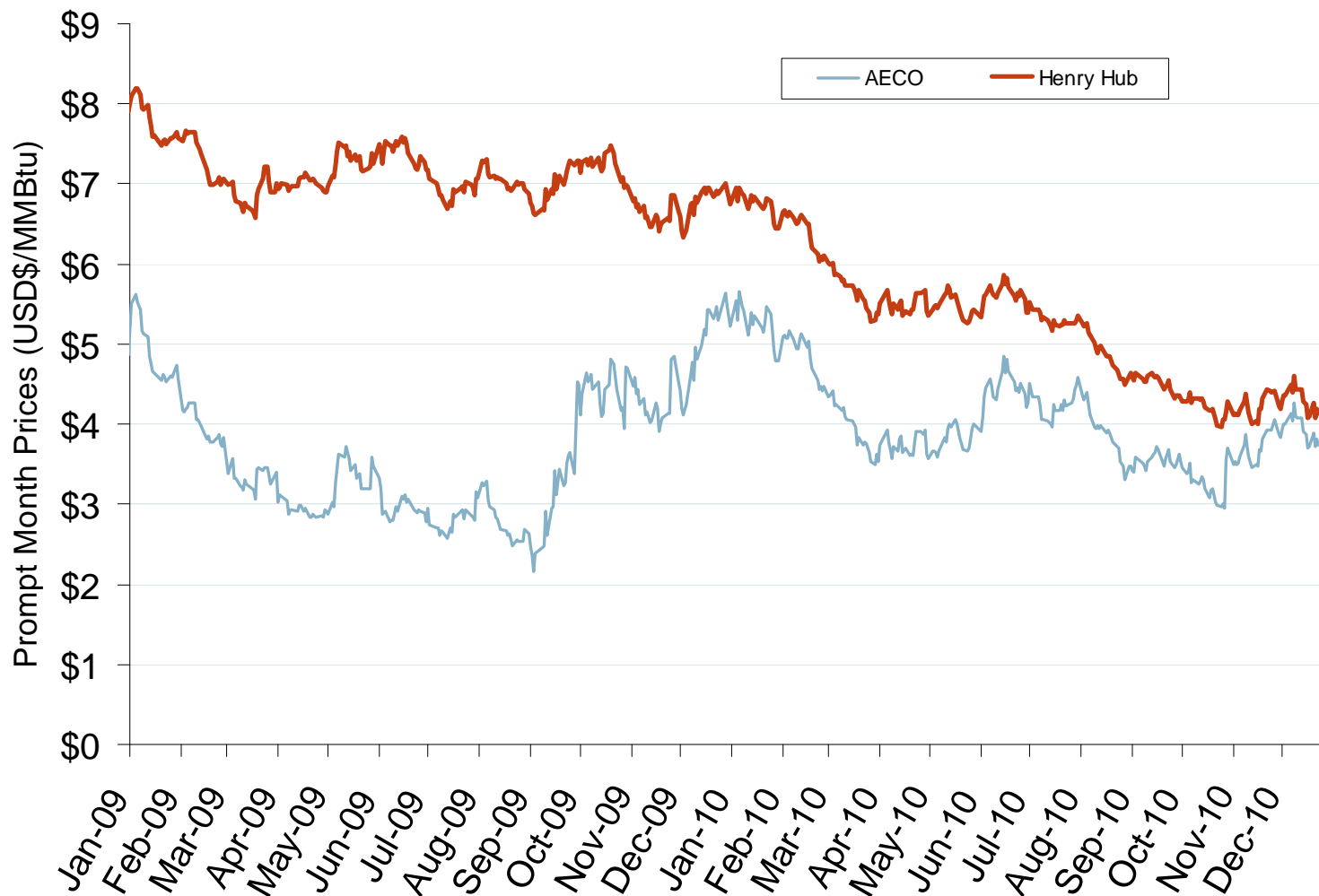


Atlantic Basin European and US Spot Natural Gas Prices

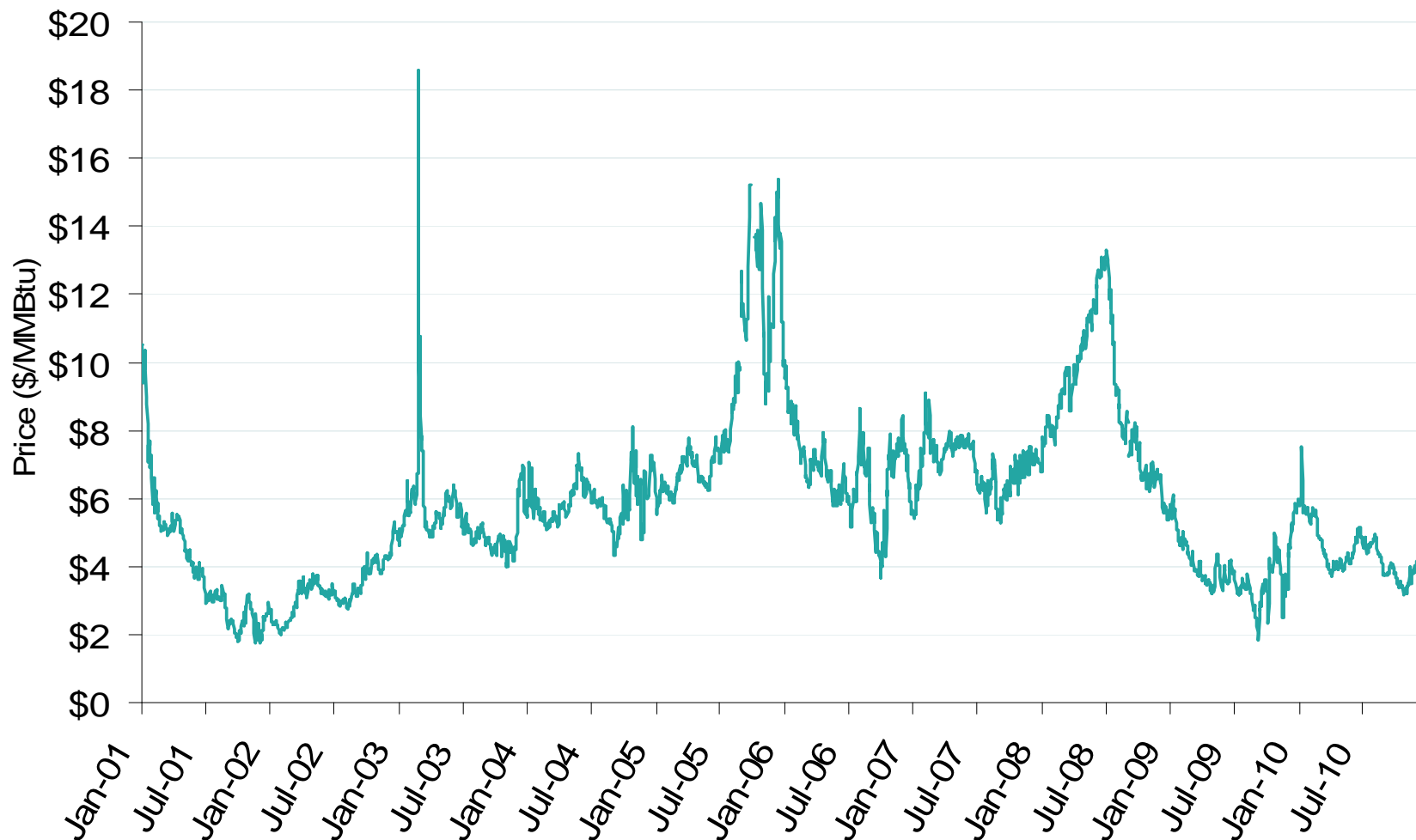


Source: Derived from *Bloomberg* and *ICE* data.
January 2011

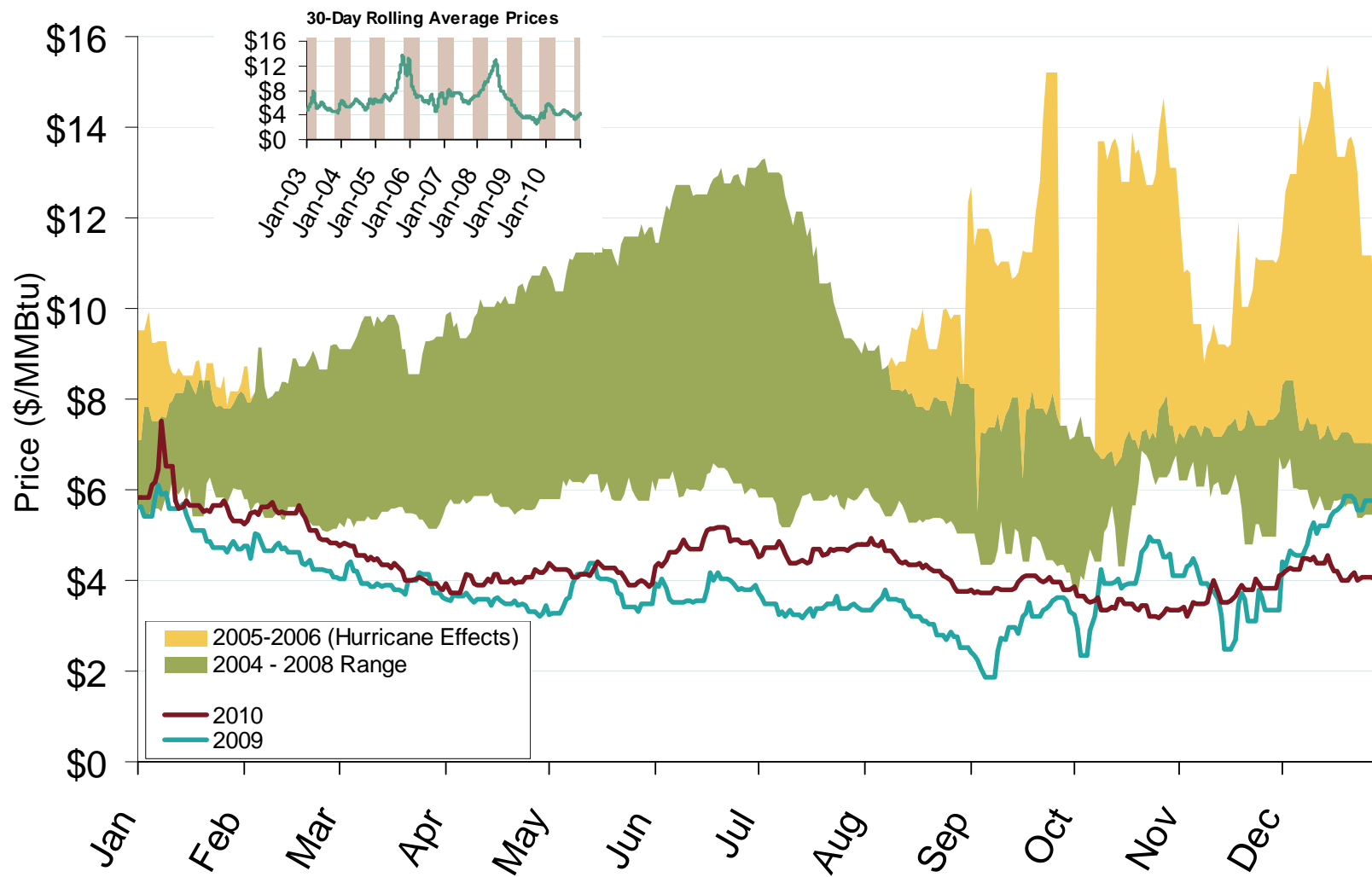
Henry Hub and AECO Prompt-Month Futures Prices



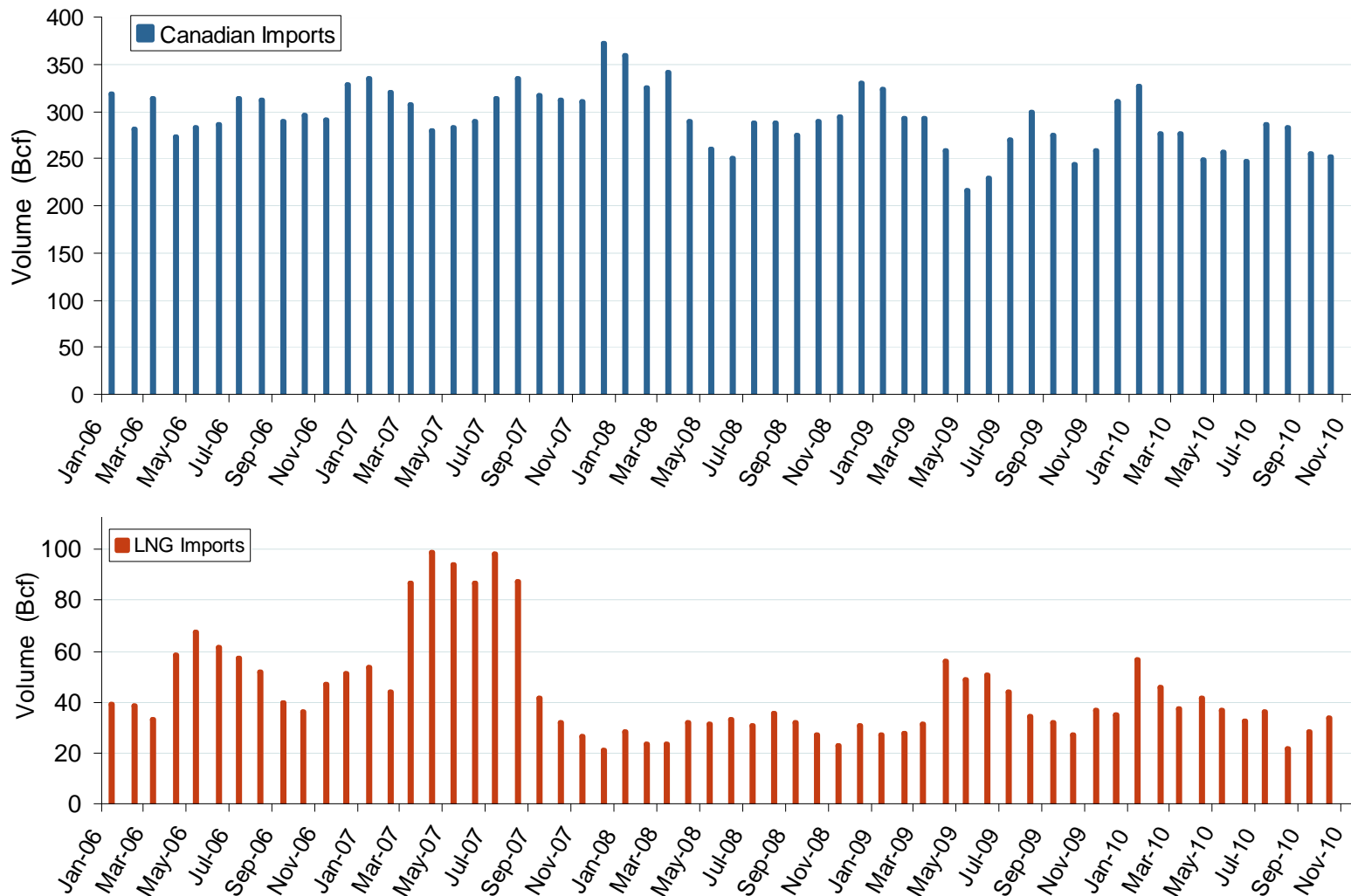
Henry Hub Natural Gas Daily Spot Prices 2001-2010



Henry Hub Natural Gas Daily Spot Prices

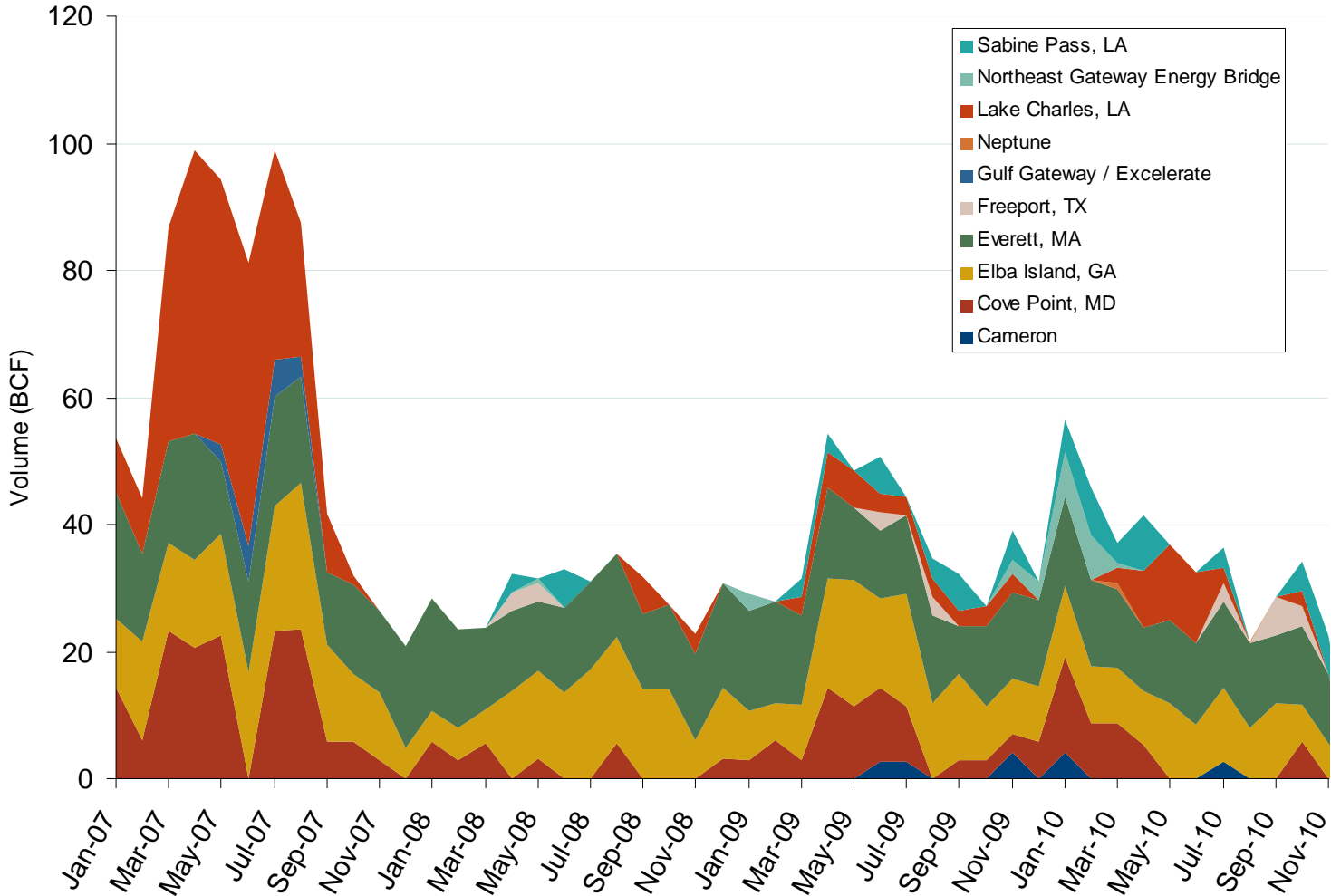


Canadian and LNG Natural Gas Imports Into the U.S.



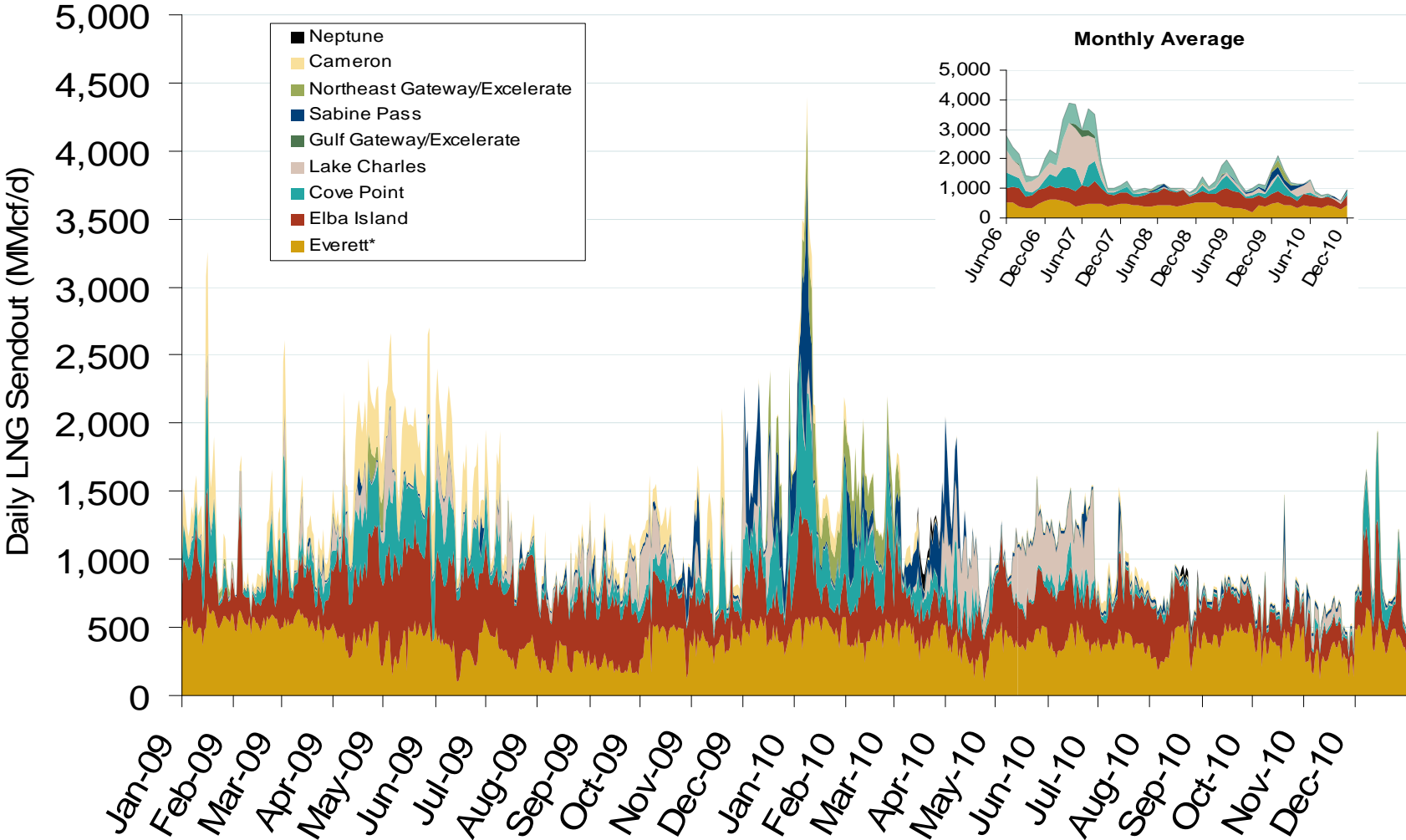
Source: Derived from EIA Natural Gas Monthly data.
January 2011

Monthly Gas Imports at Existing U.S. LNG Facilities



Source: Derived from DOE Office of Fossil Energy data.
January 2011

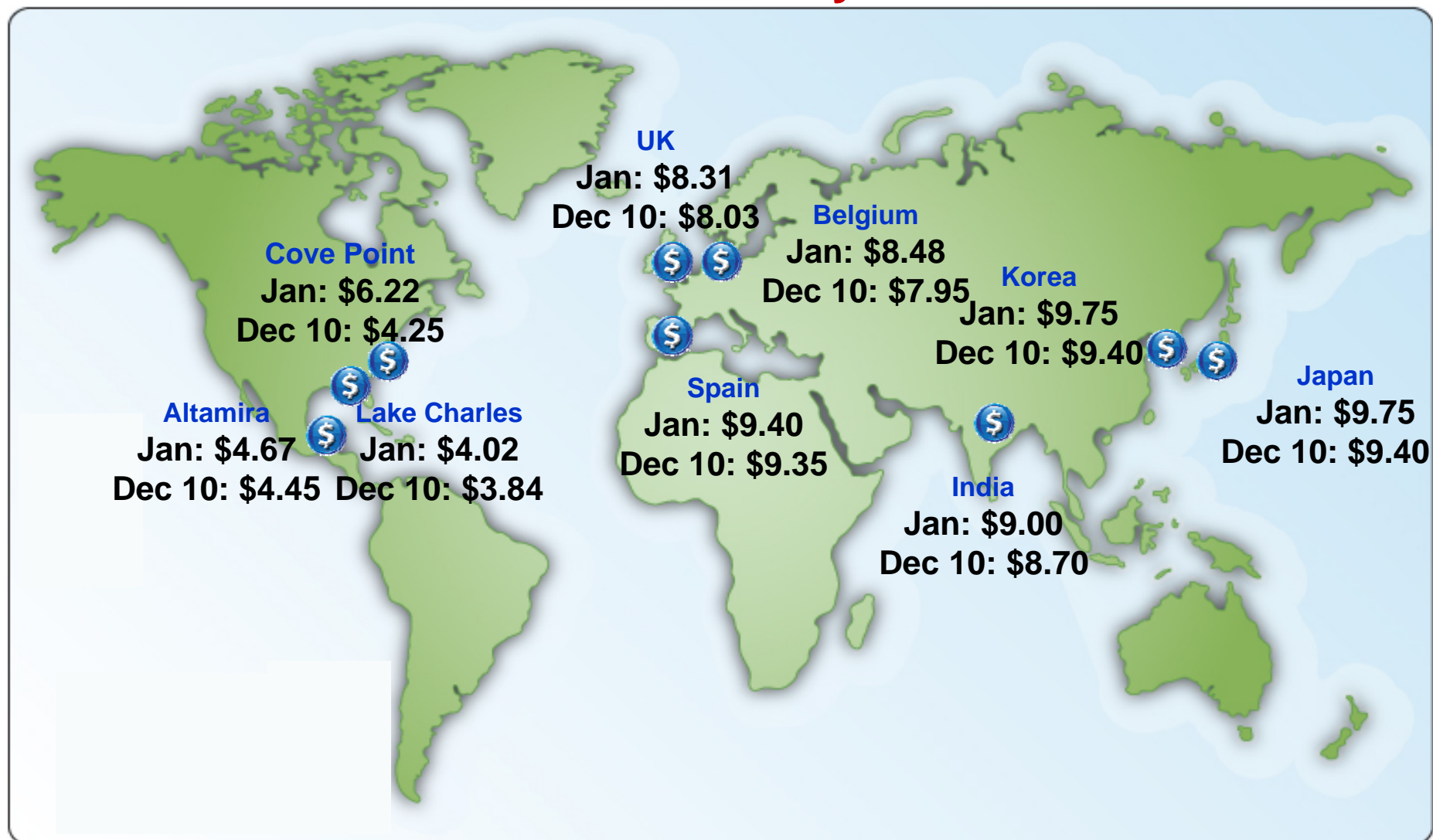
Daily Gas Sendout from Existing LNG Facilities



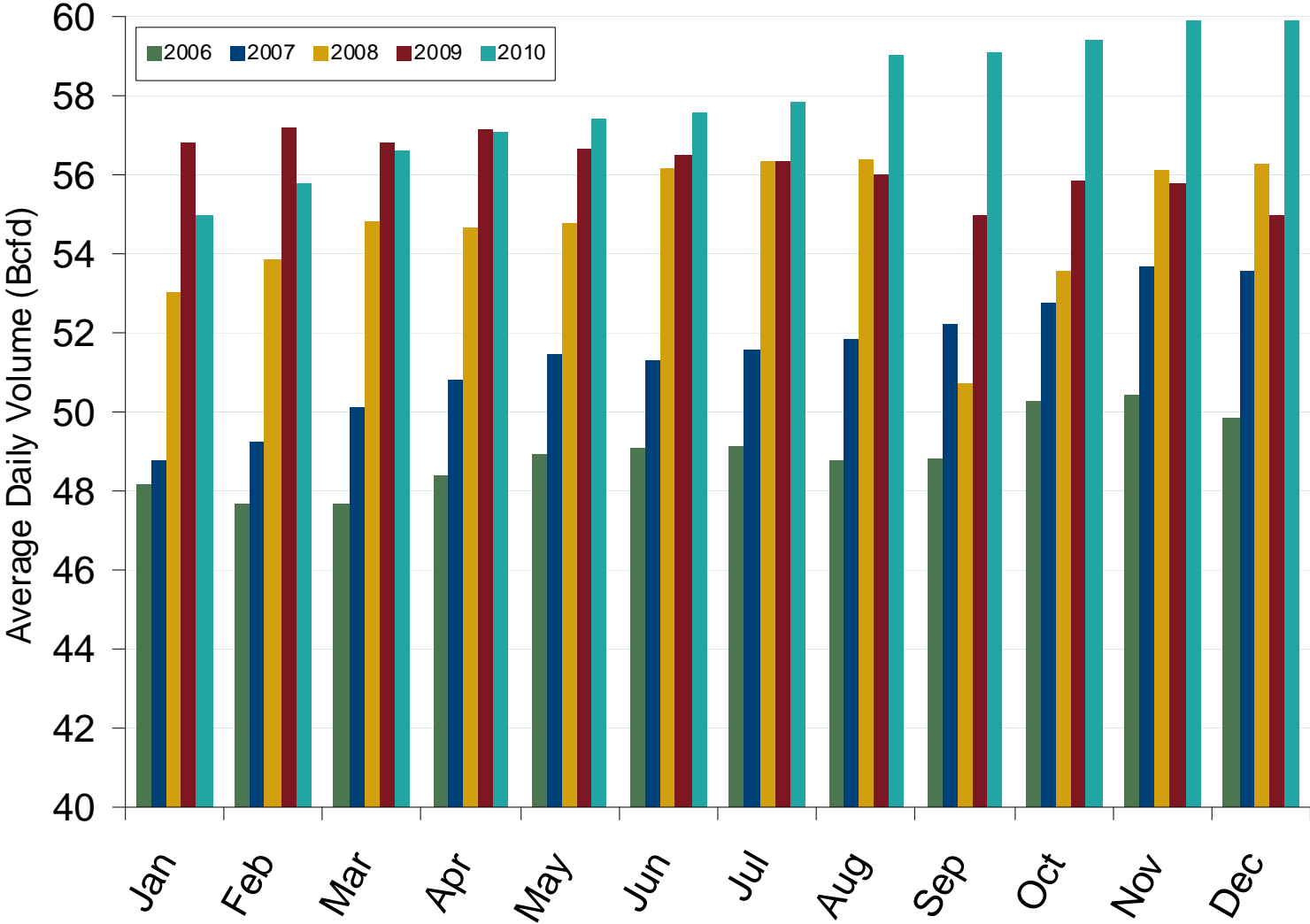
Source: Derived from *Bentek* data.

* Everett data includes flows onto the AGT and TGP interstate lines, plus estimates of flows to the Mystic 7 power plant, Keyspan Boston Gas, and LNG trucked out of the terminal. Excludes Freeport LNG which flows via intrastate pipelines.
January 2011

World LNG Estimated January 2011 Landed Prices



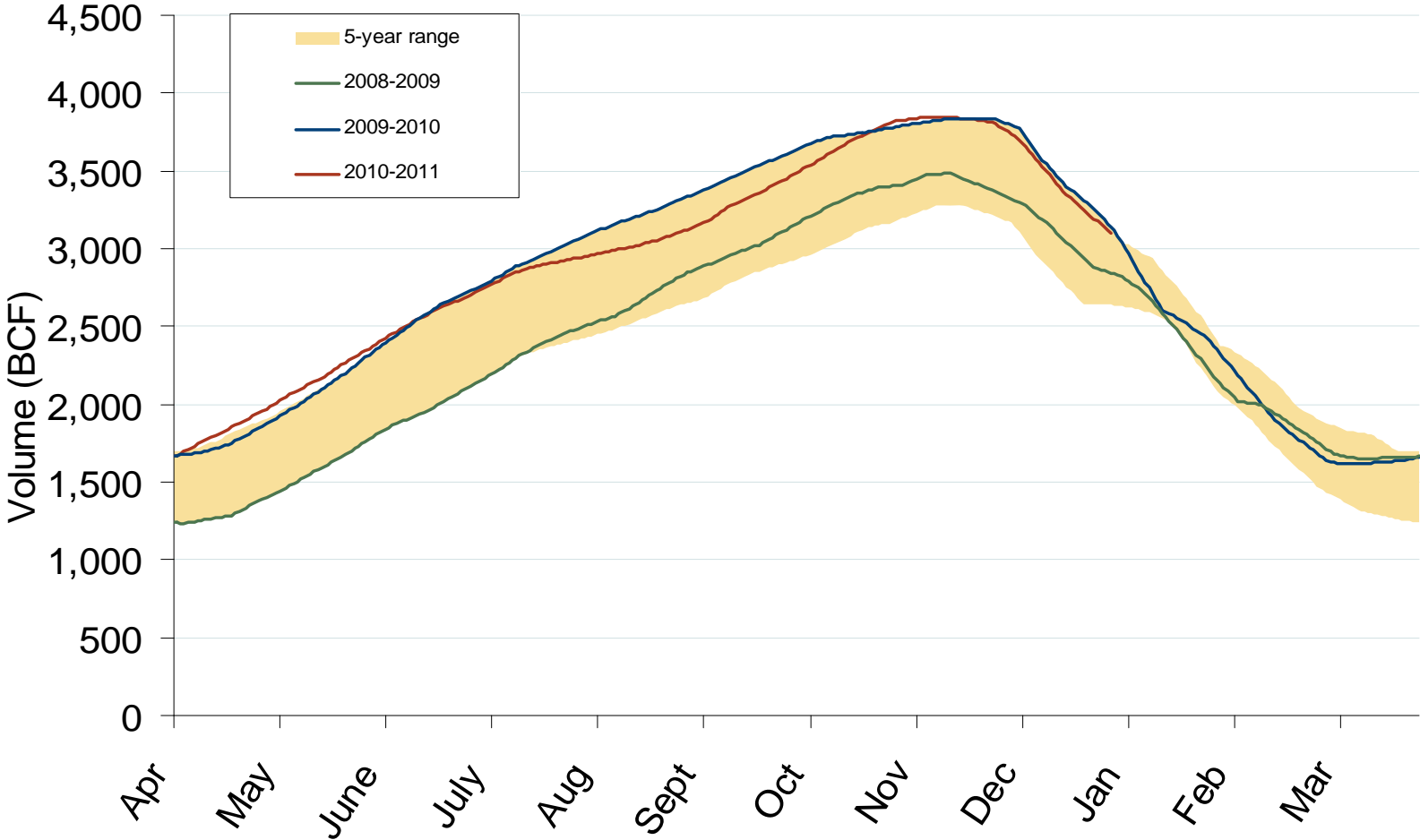
U.S. Dry Gas Production



Source: Derived from EIA and Bentek data.
January 2011

Updated January 10, 2011

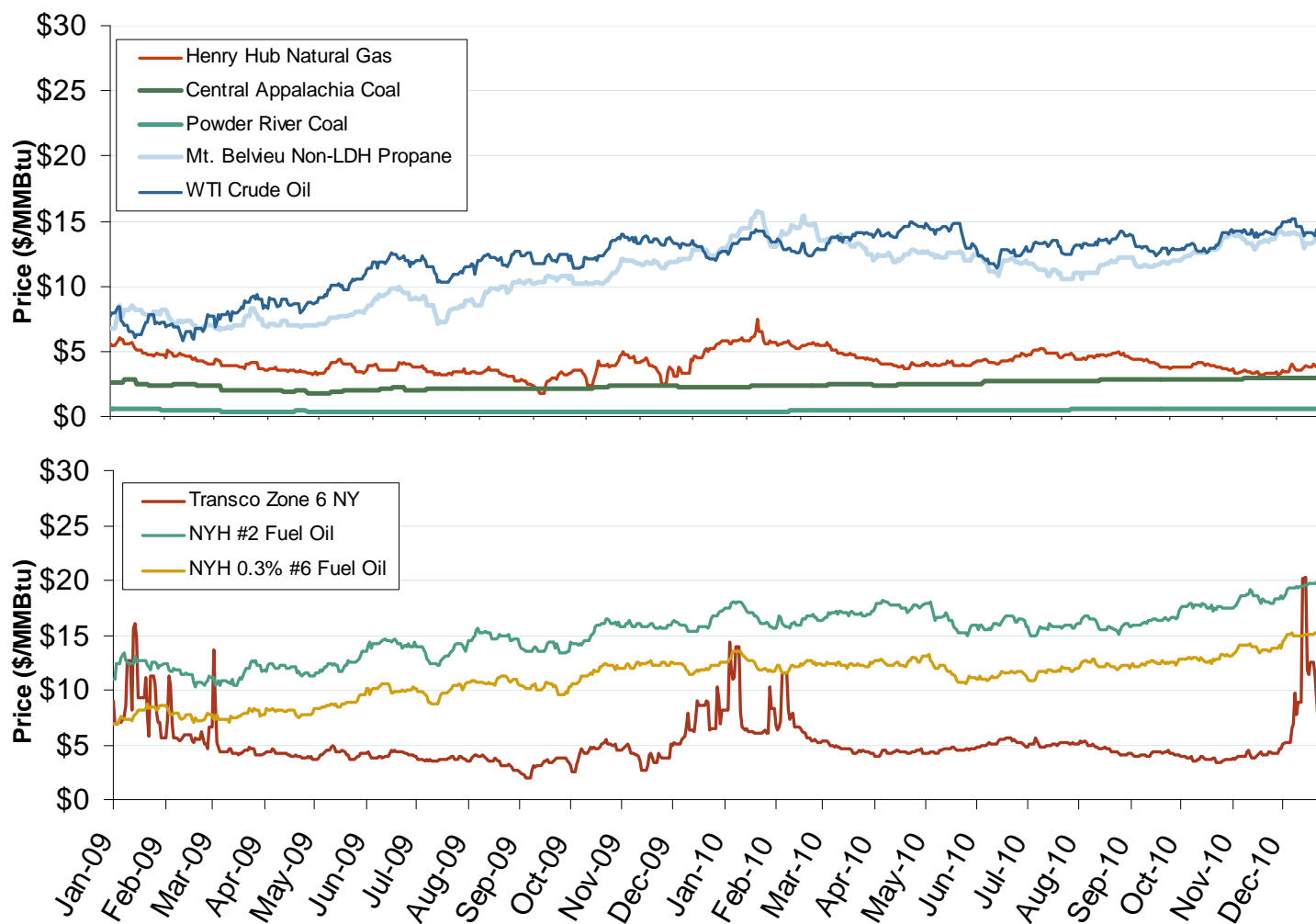
Total U.S. Working Gas in Storage



Source: Derived from EIA data.
January 2011

Updated January 10, 2011

Oil, Coal and Natural Gas Daily Spot Prices

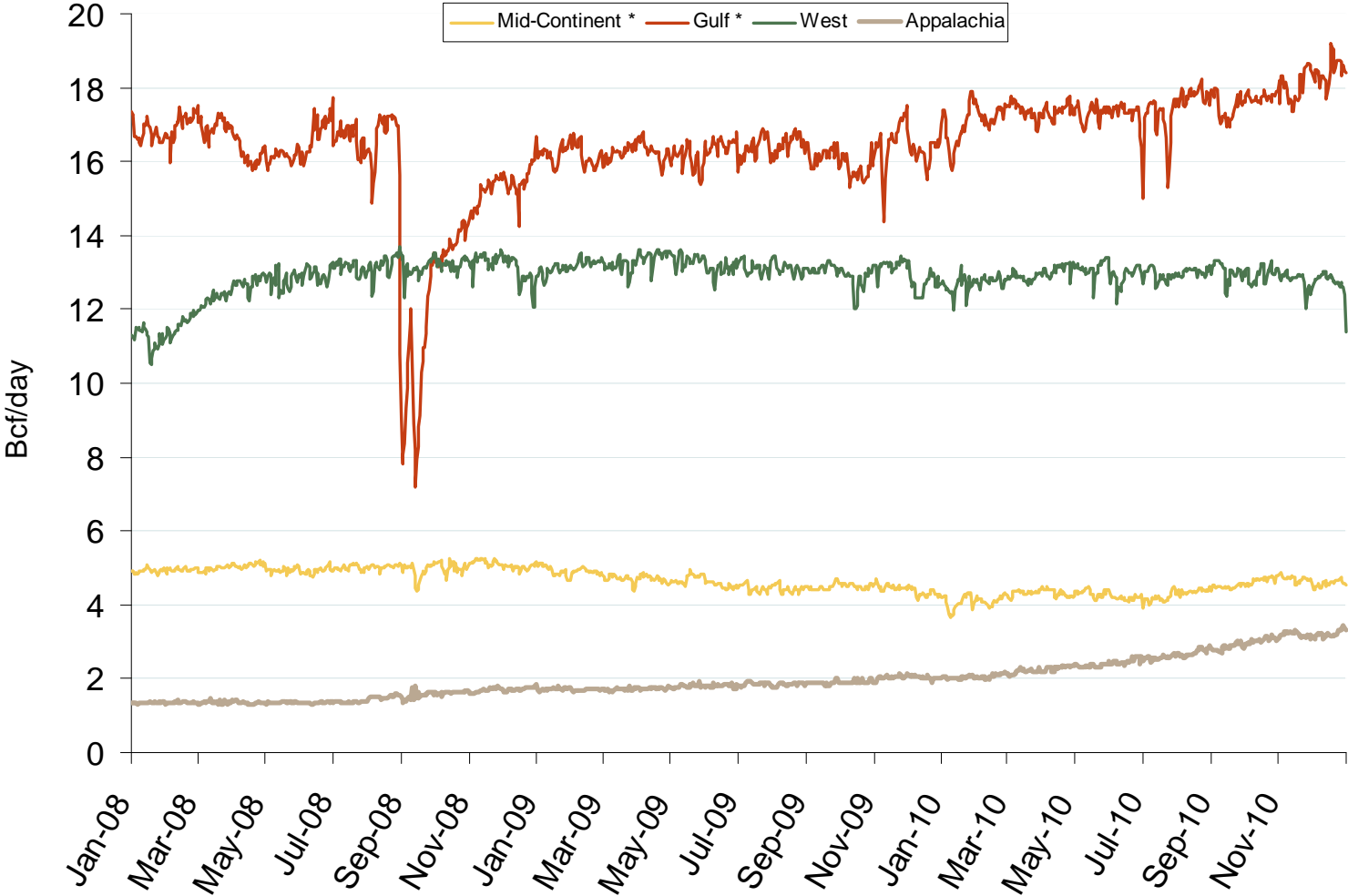


Source: Derived from *ICE* and *Bloomberg* data.

Note: Coal prices are quoted in \$/ton. Conversion factors to \$/MMBtu are based on contract specifications of 12,000 btus/pound for Central Appalachian coal and 8800 btus/pound for Powder River Basin coal.

Updated January 10, 2011

Regional Natural Gas Production

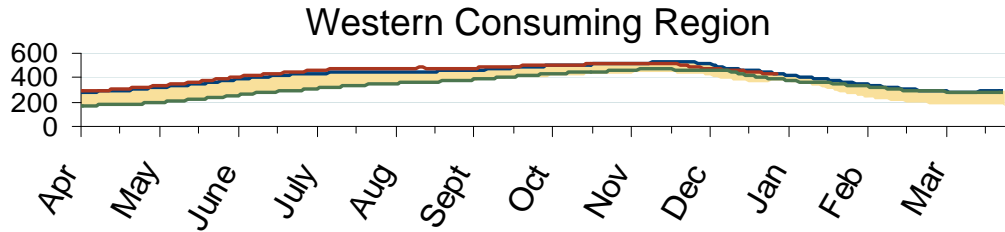
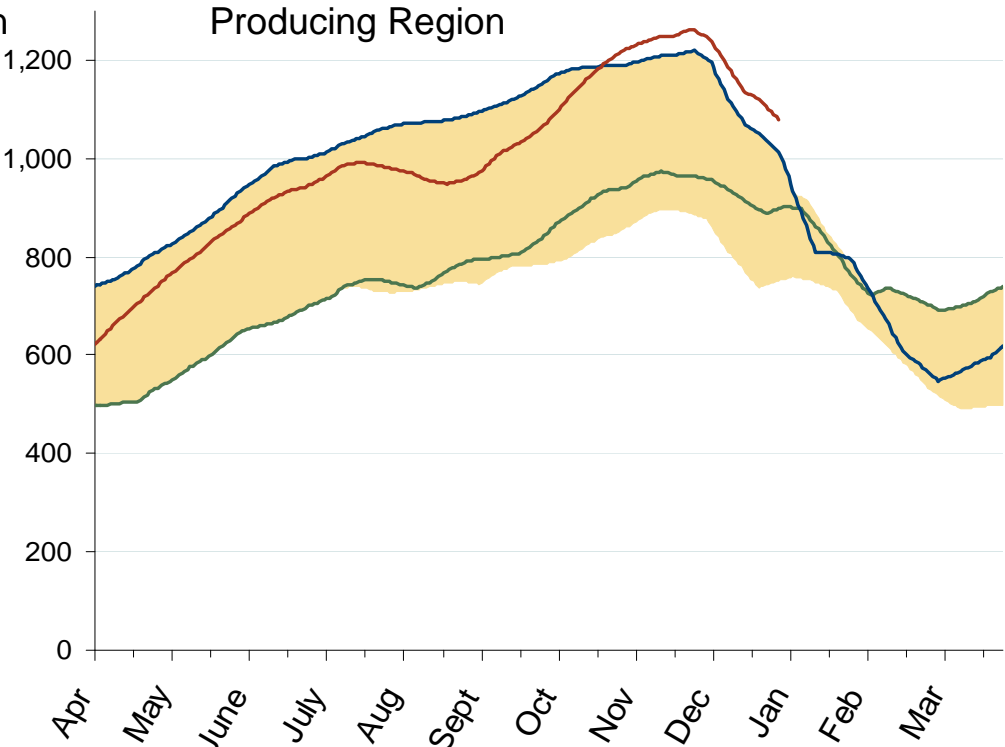
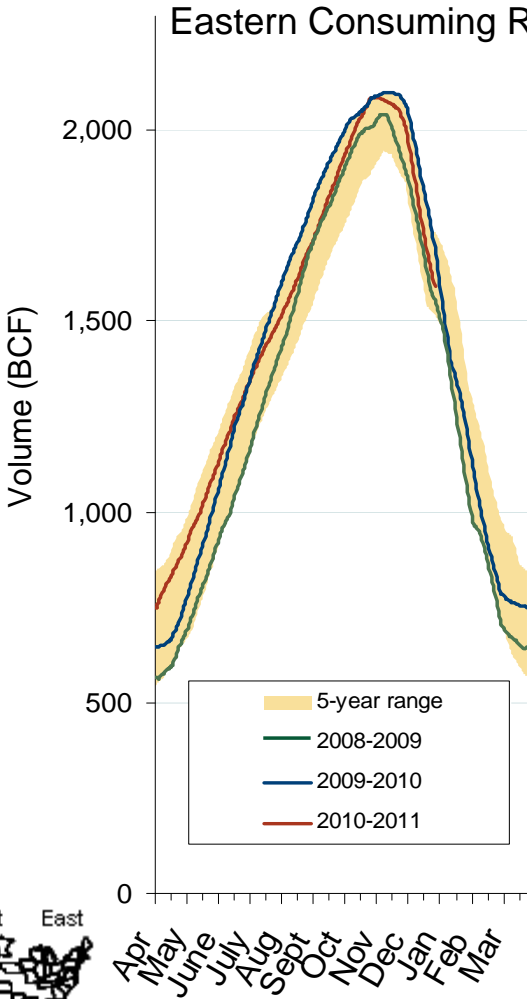


Source: Derived from Bentek data.

* On July 1, 2009 Bentek redefined its regions, moving some of the southern Midcontinent production to the Southeast, which is included in Gulf series.

Updated January 10, 2011

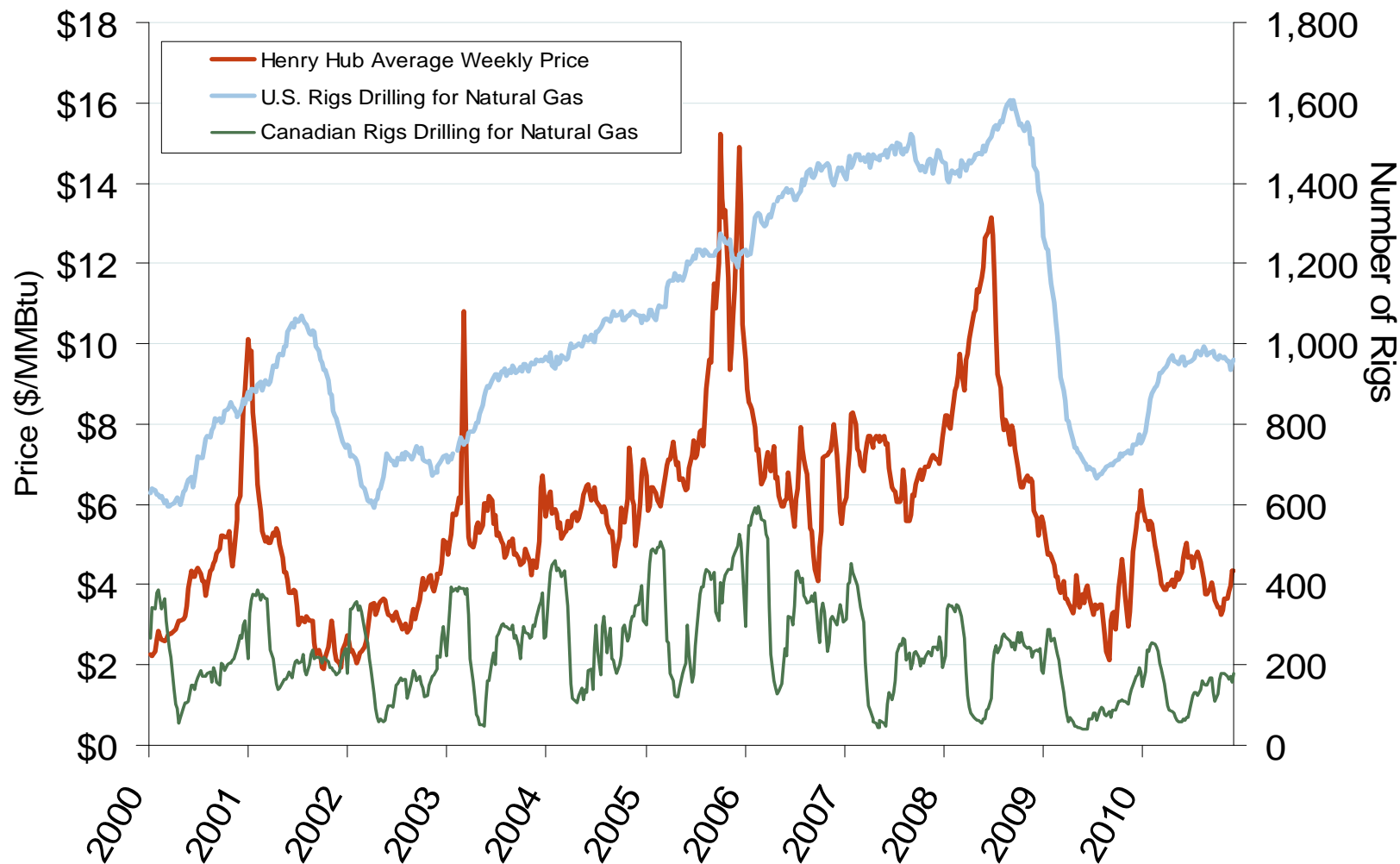
Regional Totals of Working Gas in Storage



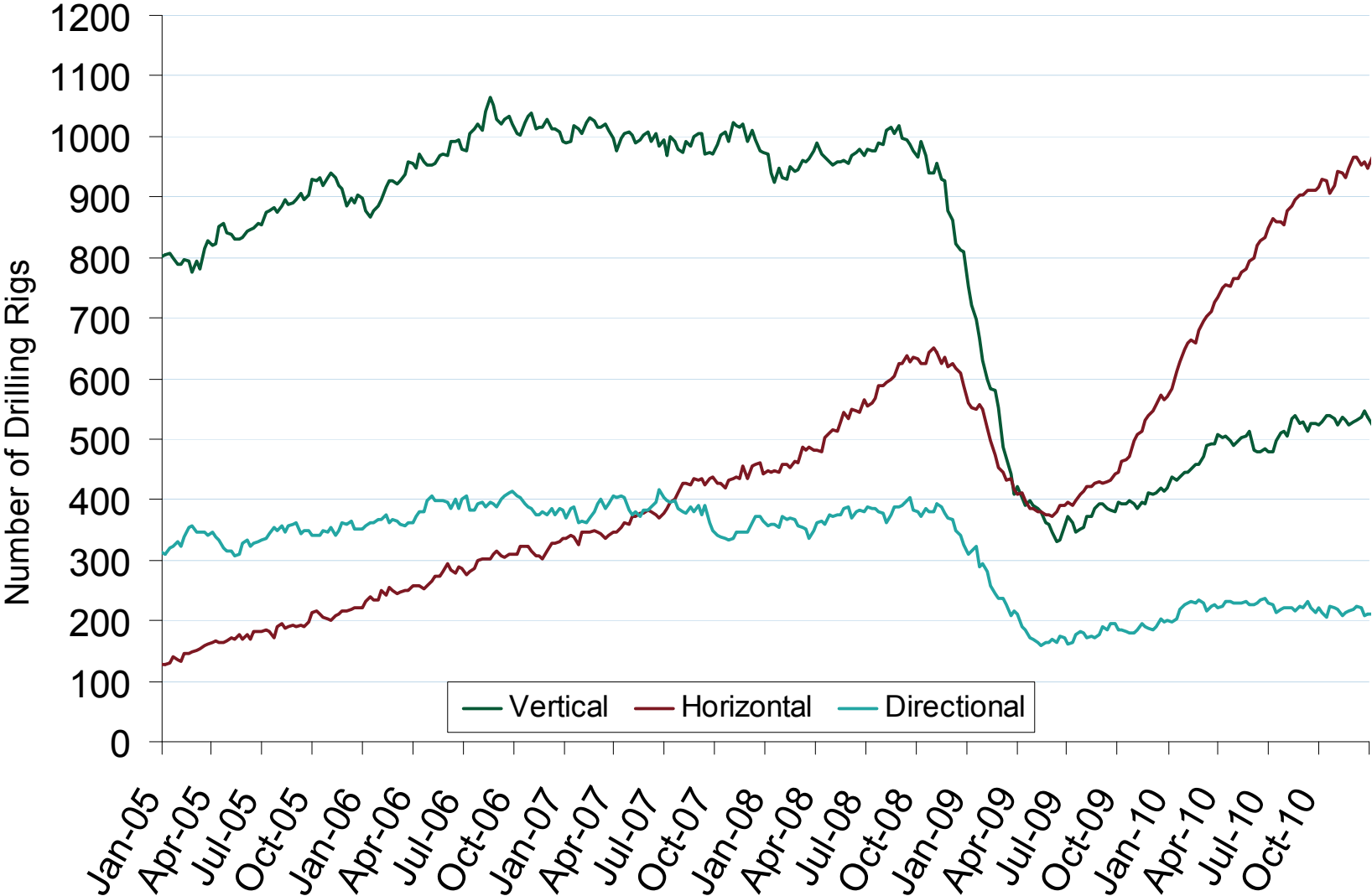
Source: Derived from EIA data.
January 2011

Updated January 10, 2011

U.S. and Canadian Natural Gas Drilling Rig Count and Daily Spot Prices



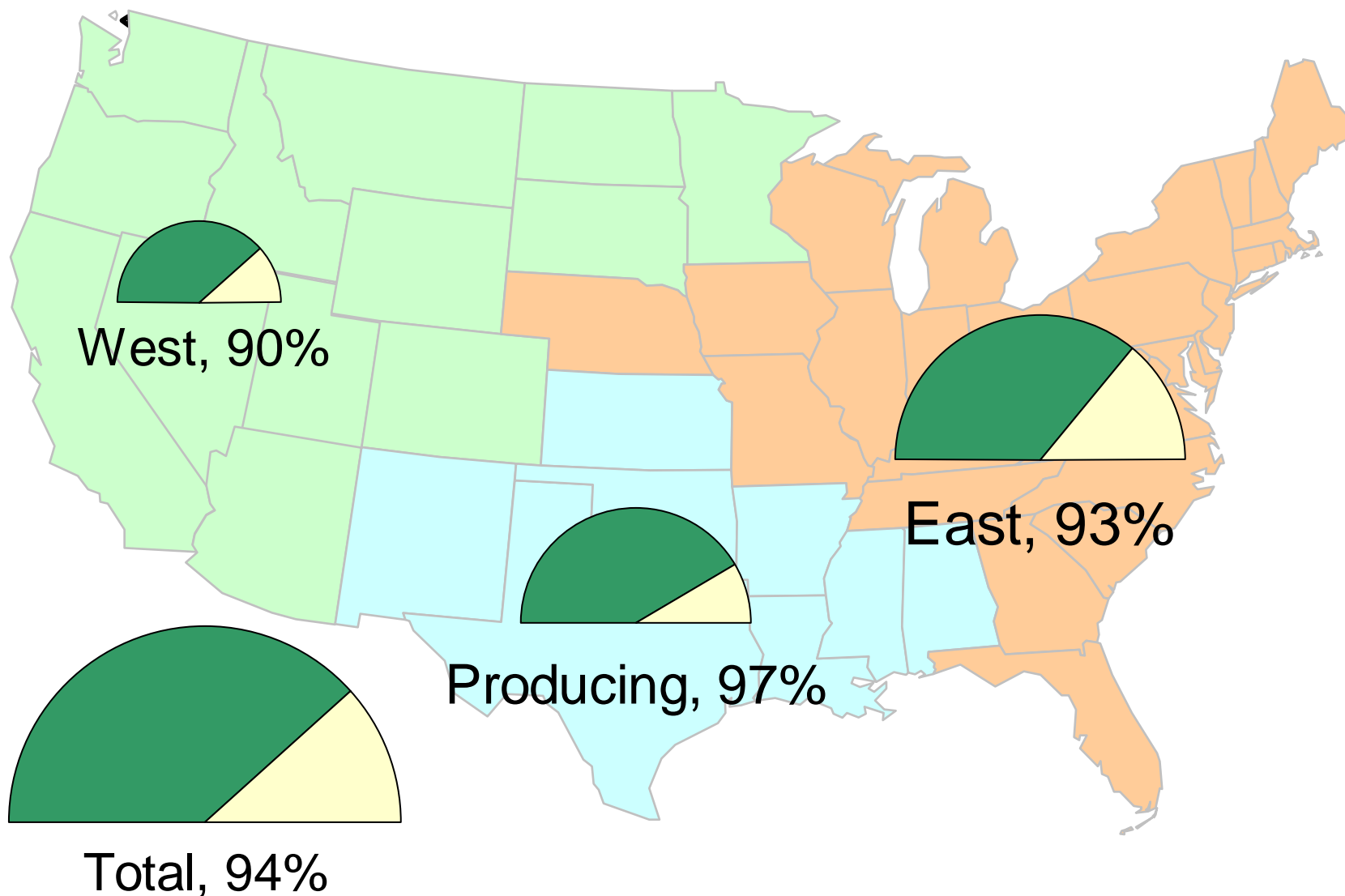
U.S. Oil and Natural Gas Drilling Rig Count by Type



Source: Derived from *Platts* and *Baker Hughes* data.

Updated: January 12, 2011

Natural Gas Storage Inventories – December 31, 2010

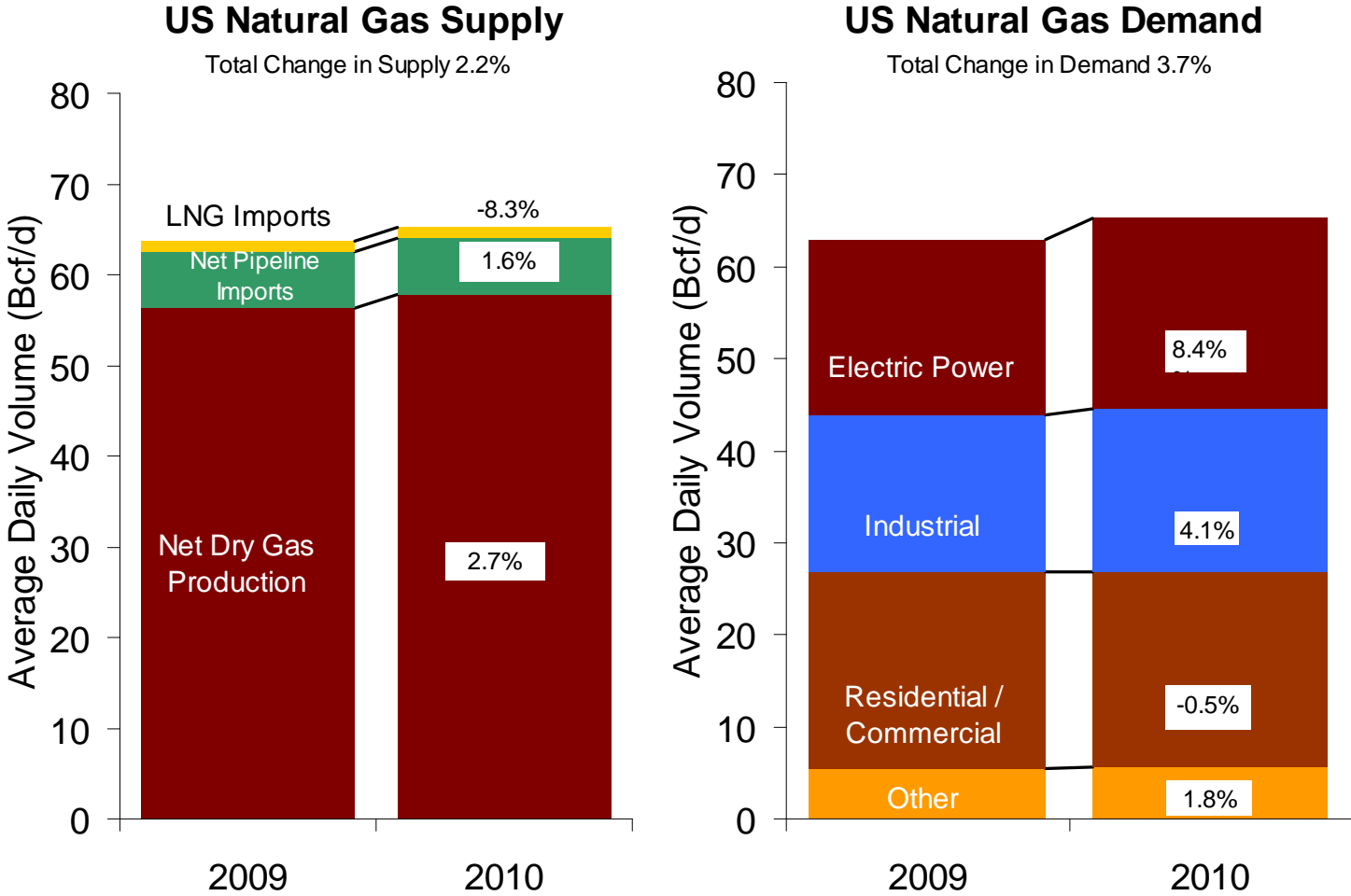


Source: Derived from *EIA Storage and Estimated Working Gas Capacity* data.
January 2011

Updated January 10, 2011

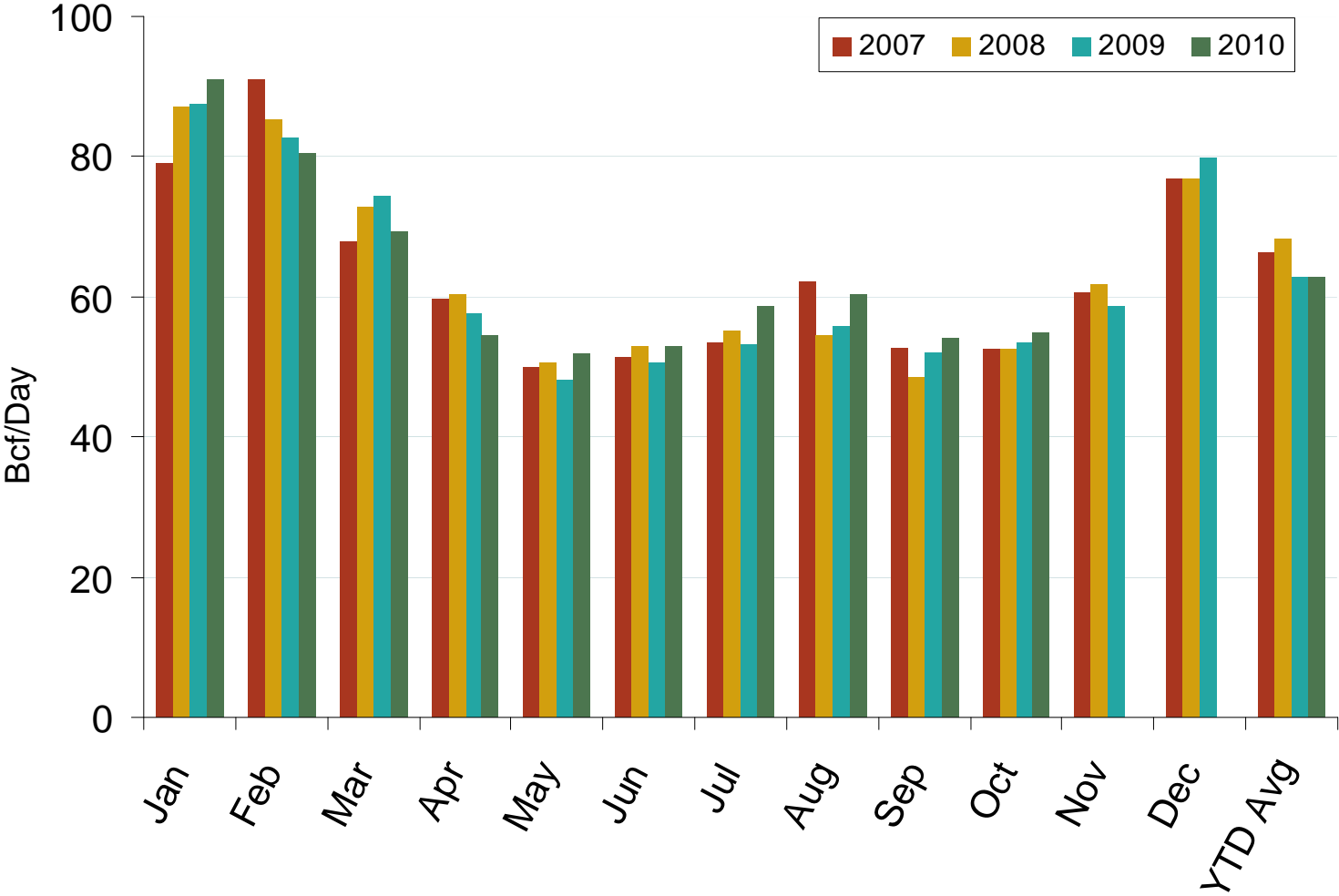
20022

U.S. Natural Gas Supply and Demand 2009 vs. 2010: January - December



Source: Derived from Bentek data.
January 2011

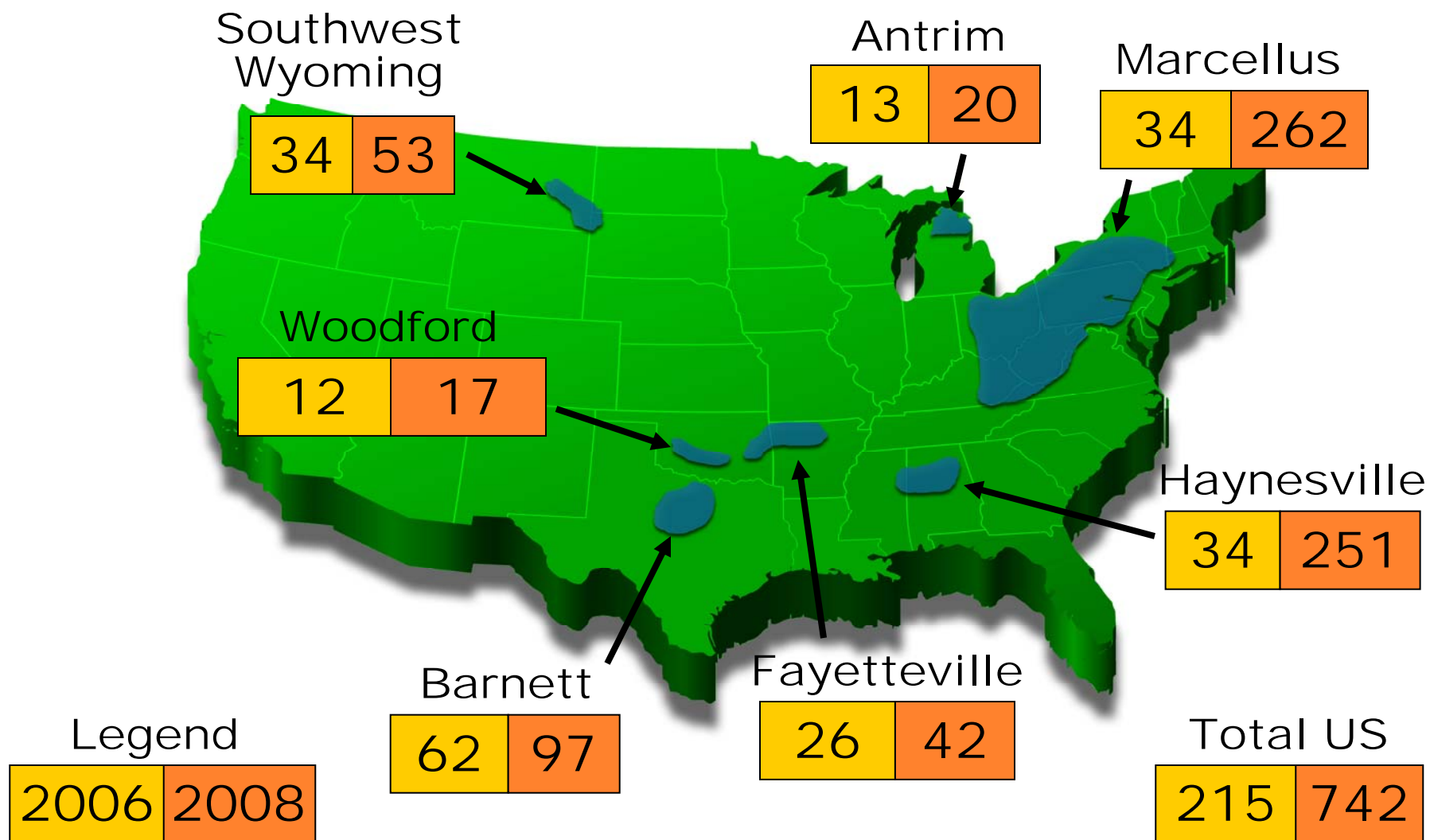
Year-to-date U.S. Natural Gas Consumption



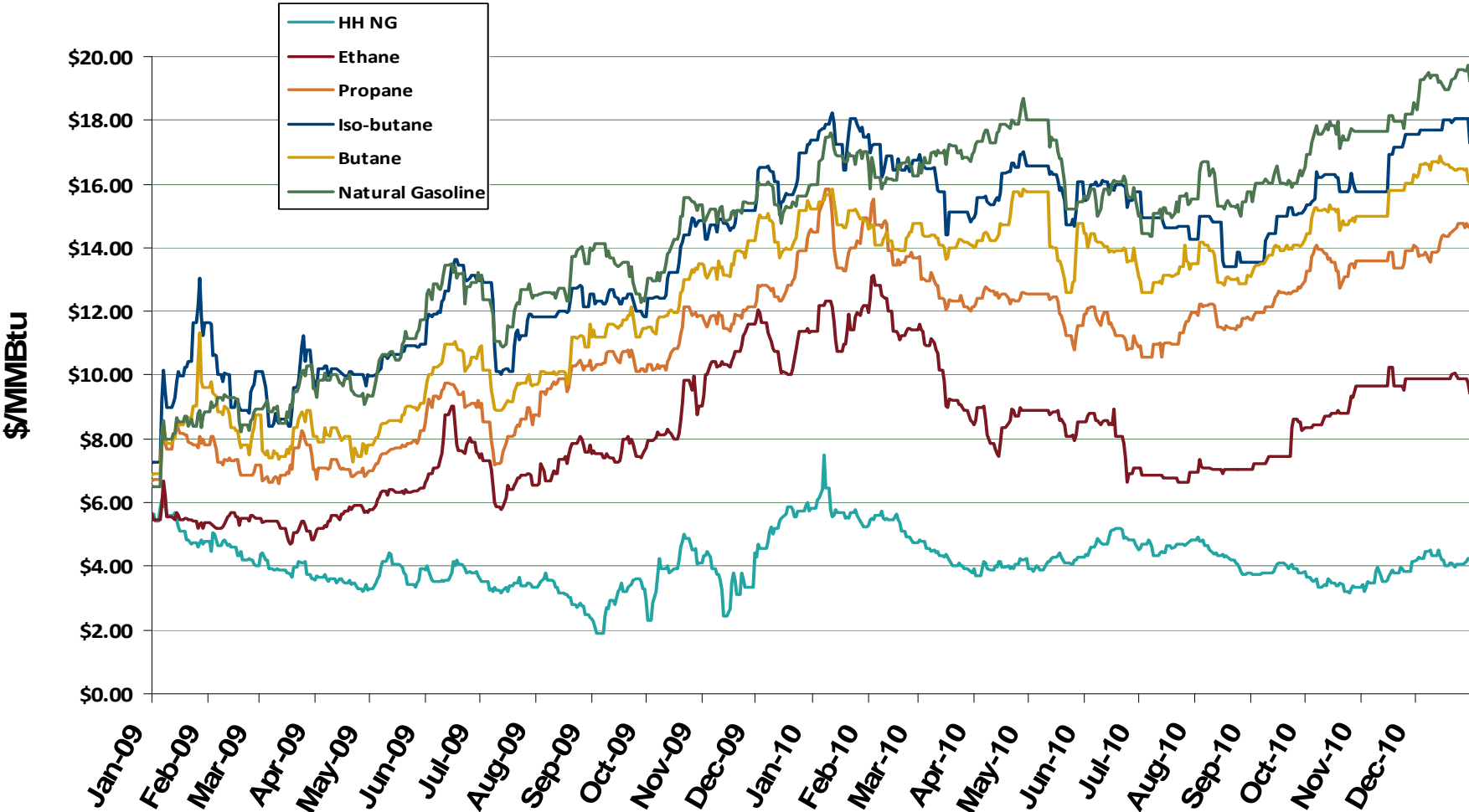
Source: Derived from EIA data.
January 2011

Updated January 10, 2011

Estimated Recoverable NG For Select Shale Basins (TCF)



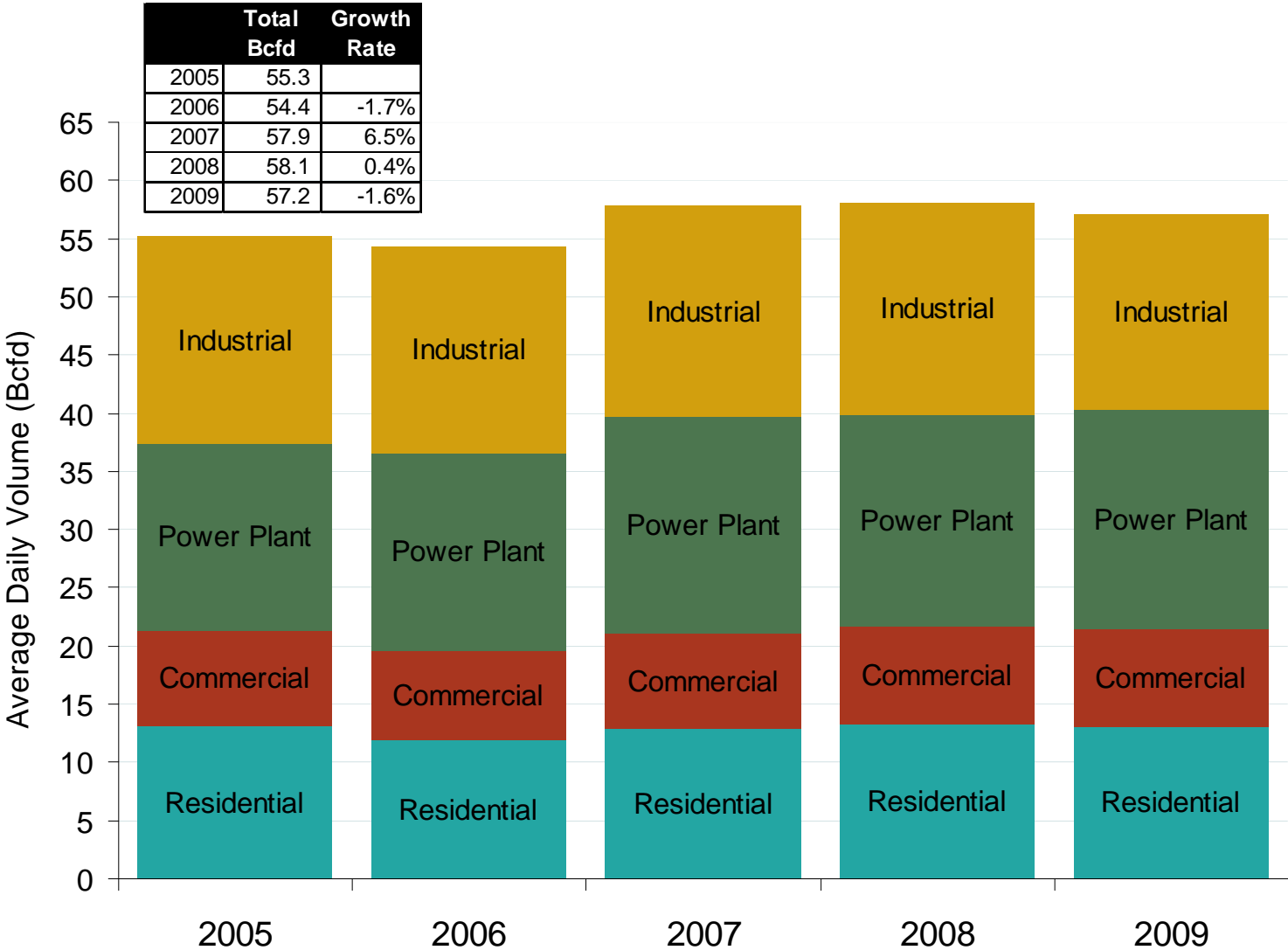
U.S. Natural Gas vs. Natural Gas Liquids (NGL) Prices



Source: Derived from Bloomberg Data
January 2011

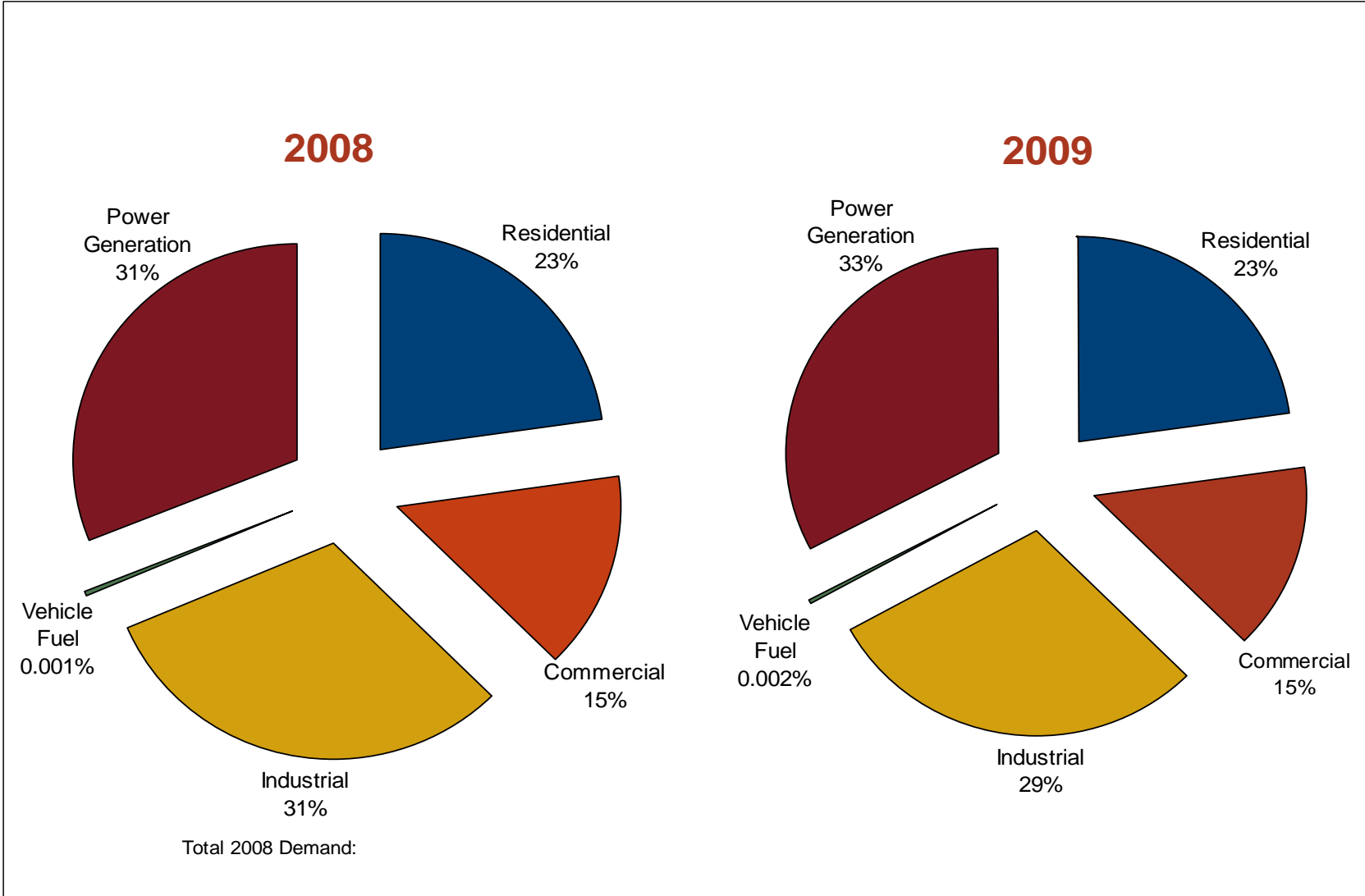
Updated January 10, 2011

U.S. Natural Gas Consumption – Lower 48 States



Source: Derived from EIA data
January 2011

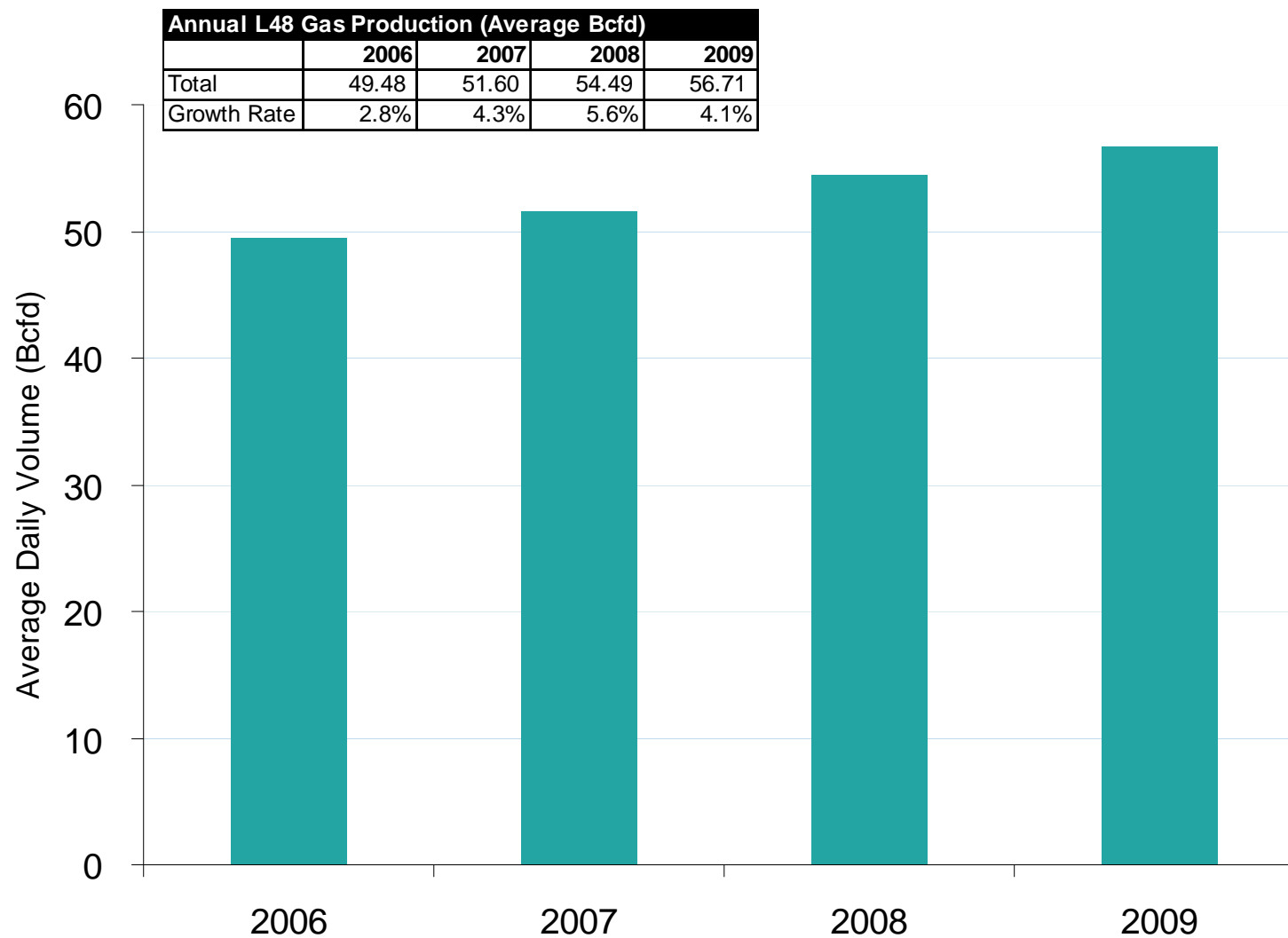
U.S. Annual Natural Gas Demand by Sector



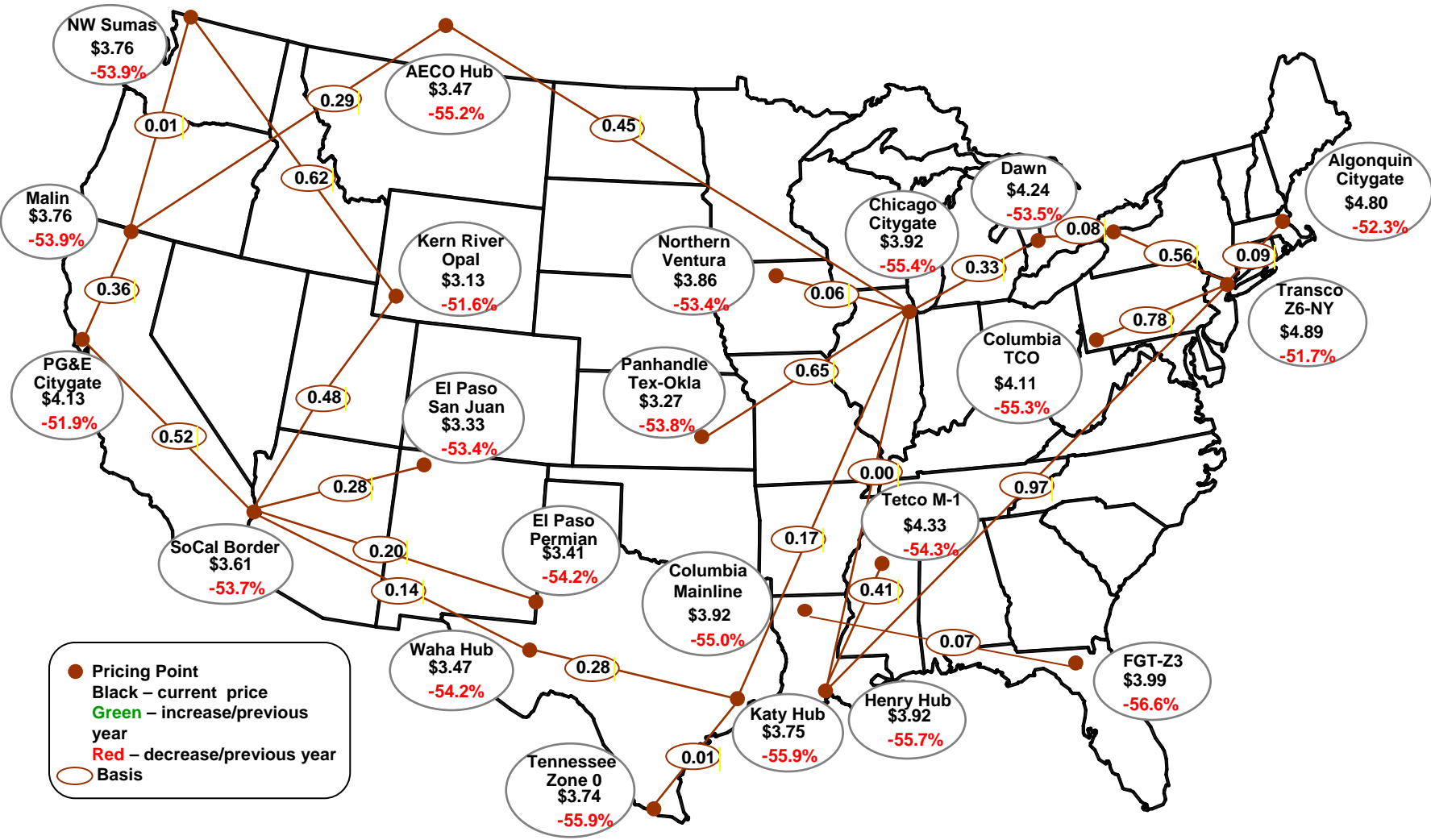
Source: Derived from EIA data.
January 2011

Updated March 5, 2010

U.S. Dry Gas Production – Lower 48 States



Average Spot Gas Prices, 2009 (\$MMBtu)



Source: Derived from Platts data. January 2011

Updated July 9, 2010