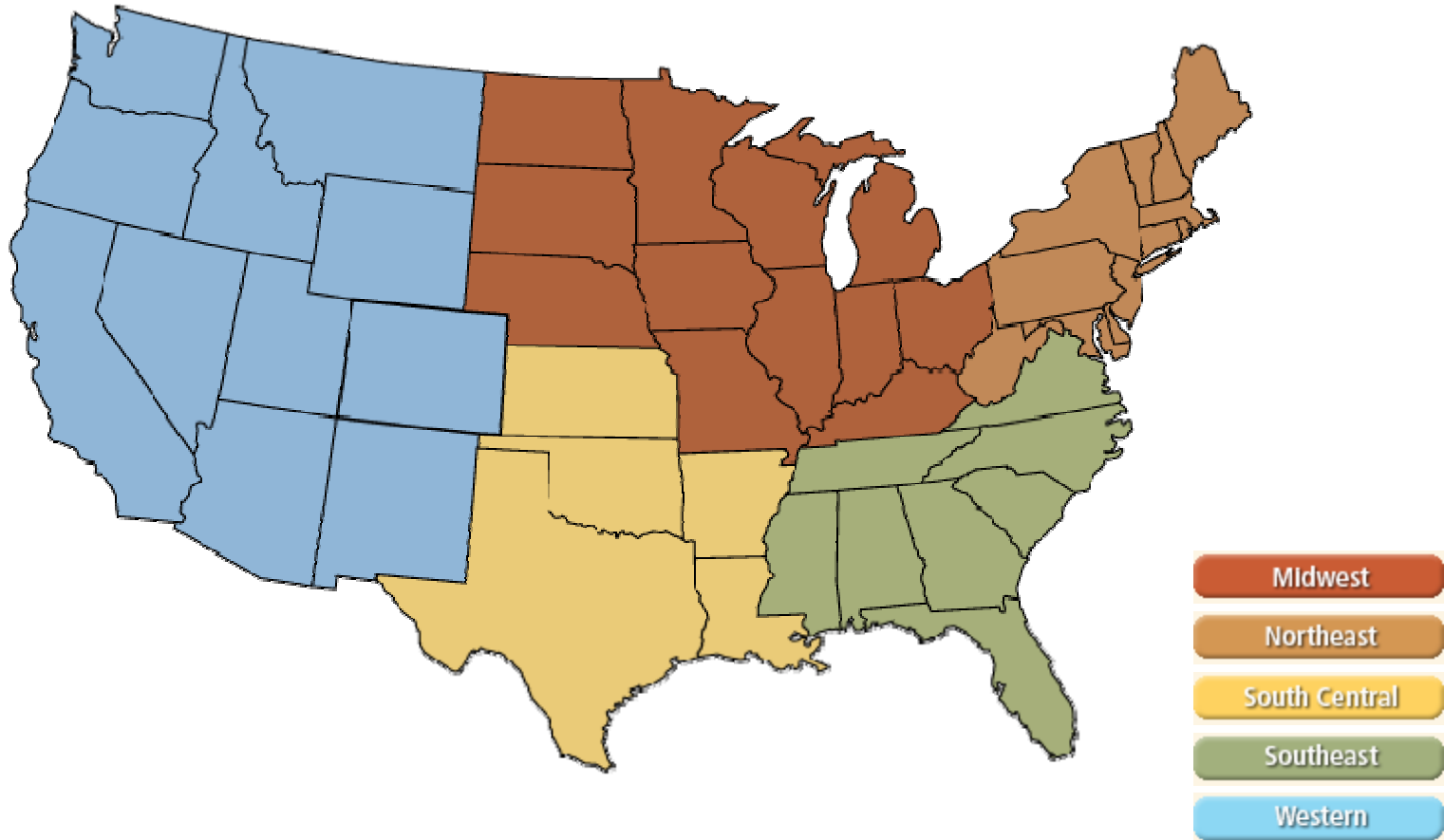
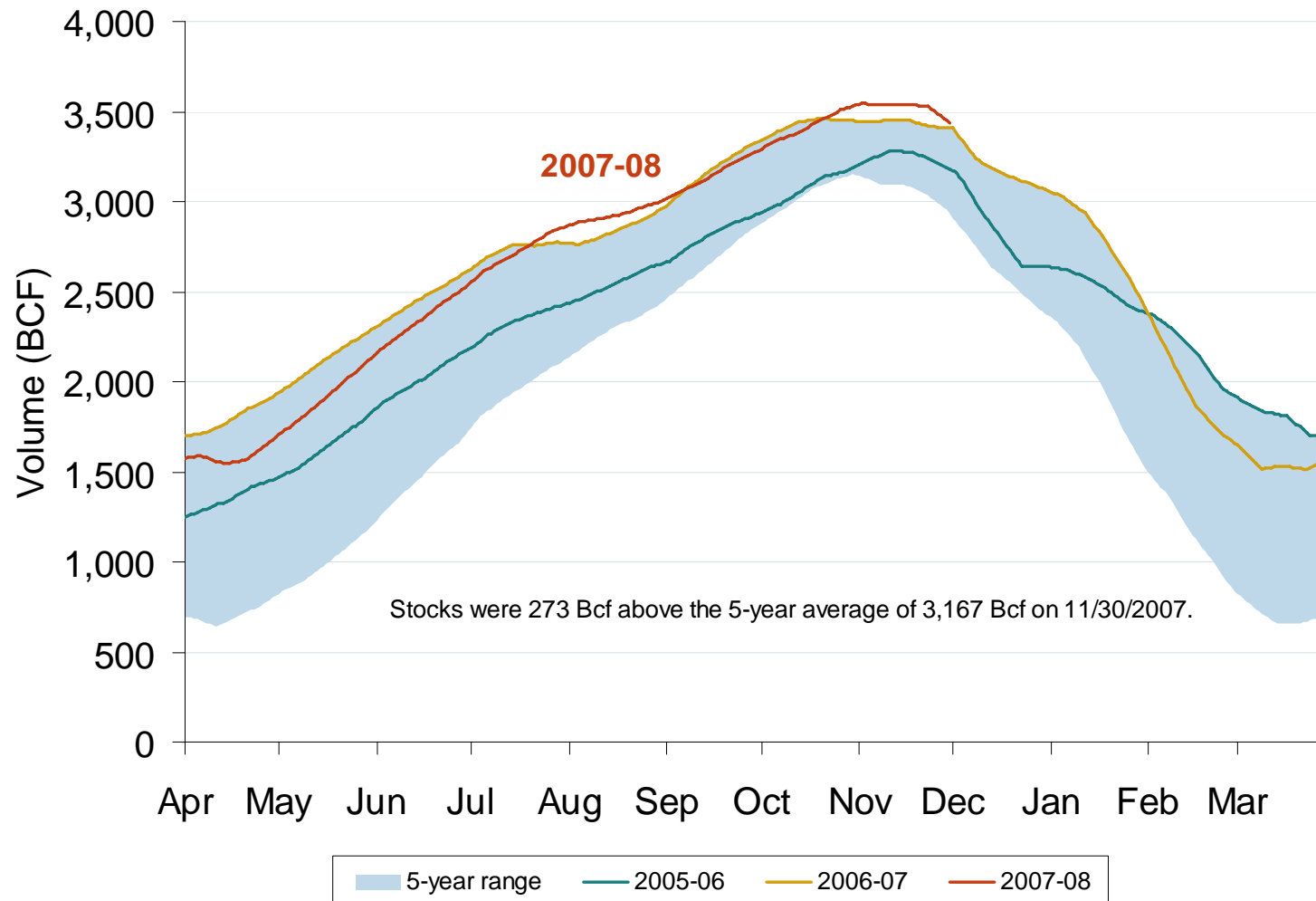


Natural Gas Market National Overview



Total U.S. Working Gas in Storage

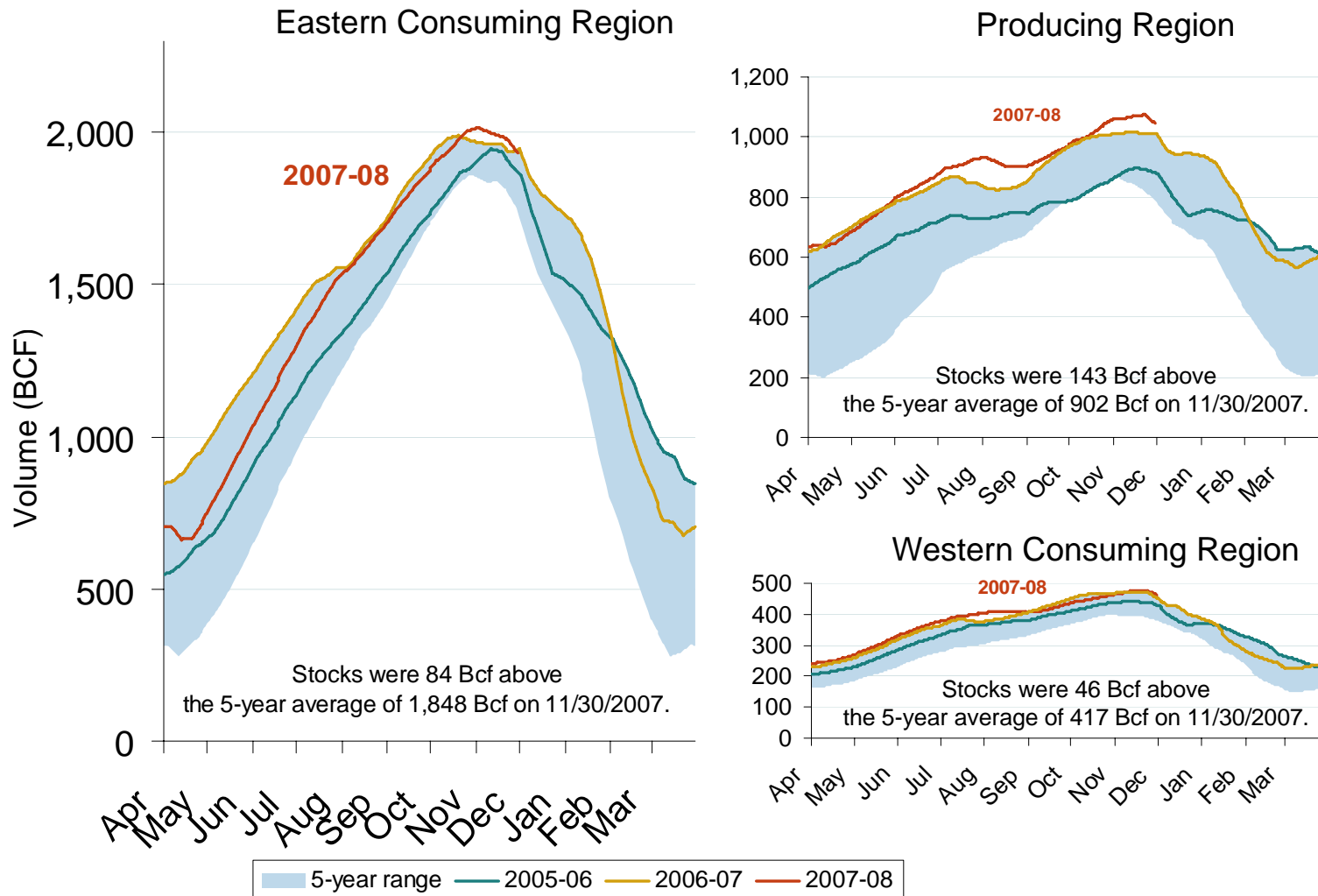


Source: Derived from EIA data.

Updated December 7, 2007

2003

Regional Totals of Working Gas in Storage

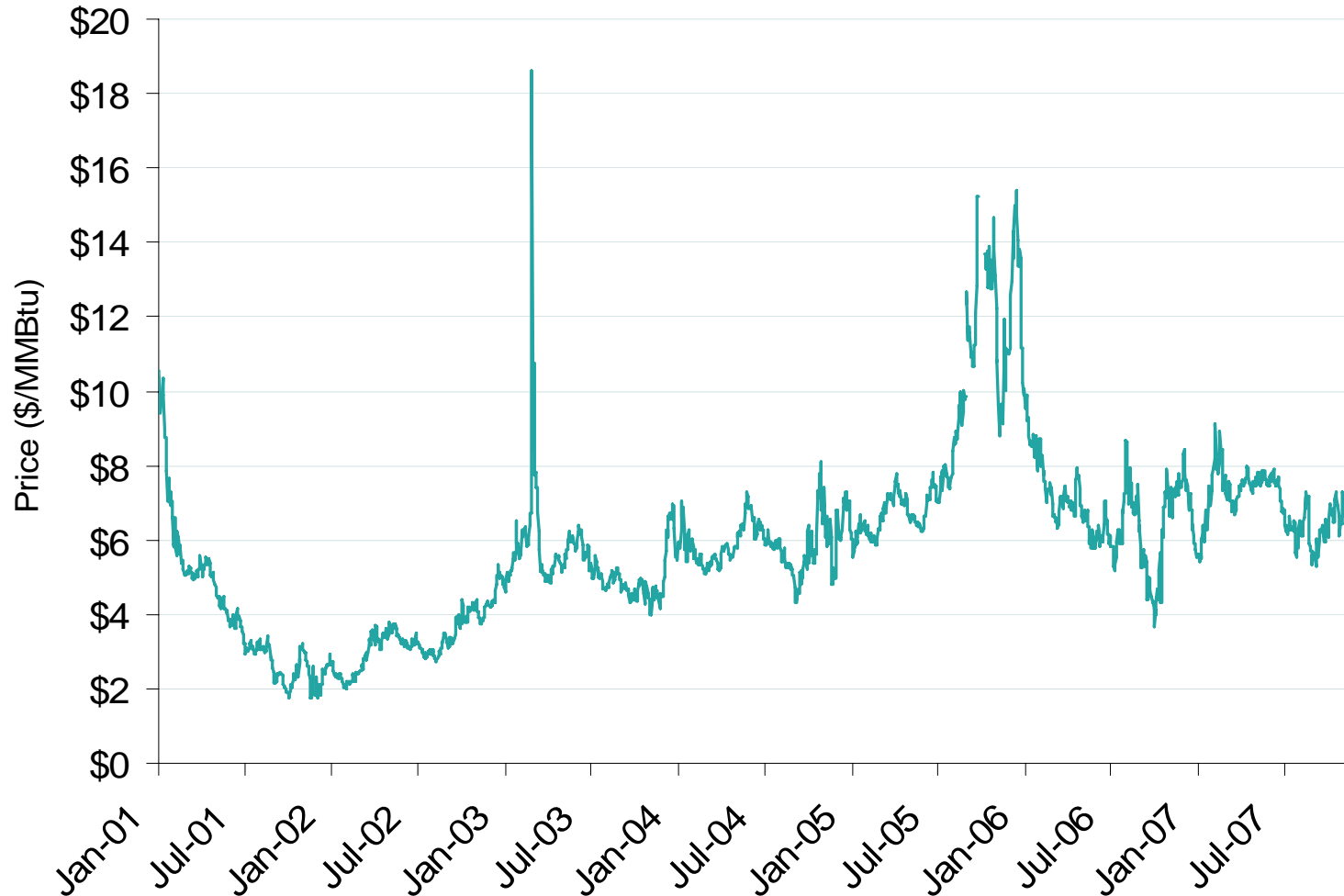


Source: Derived from EIA data.

Updated December 7, 2007

2004

Henry Hub Natural Gas Daily Spot Prices 2001-2007

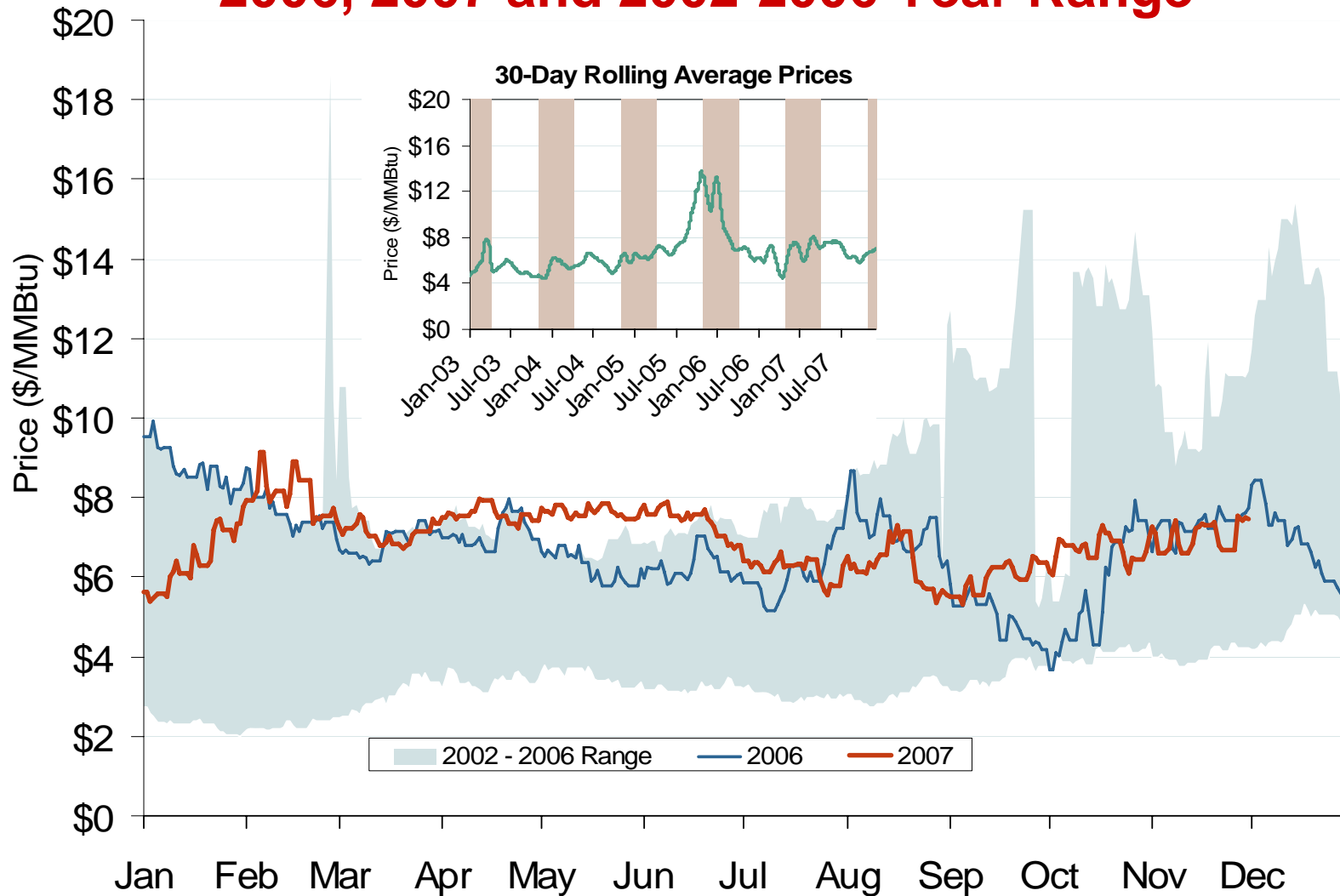


Source: Derived from *Platts* data.

Updated December 7, 2007

2001

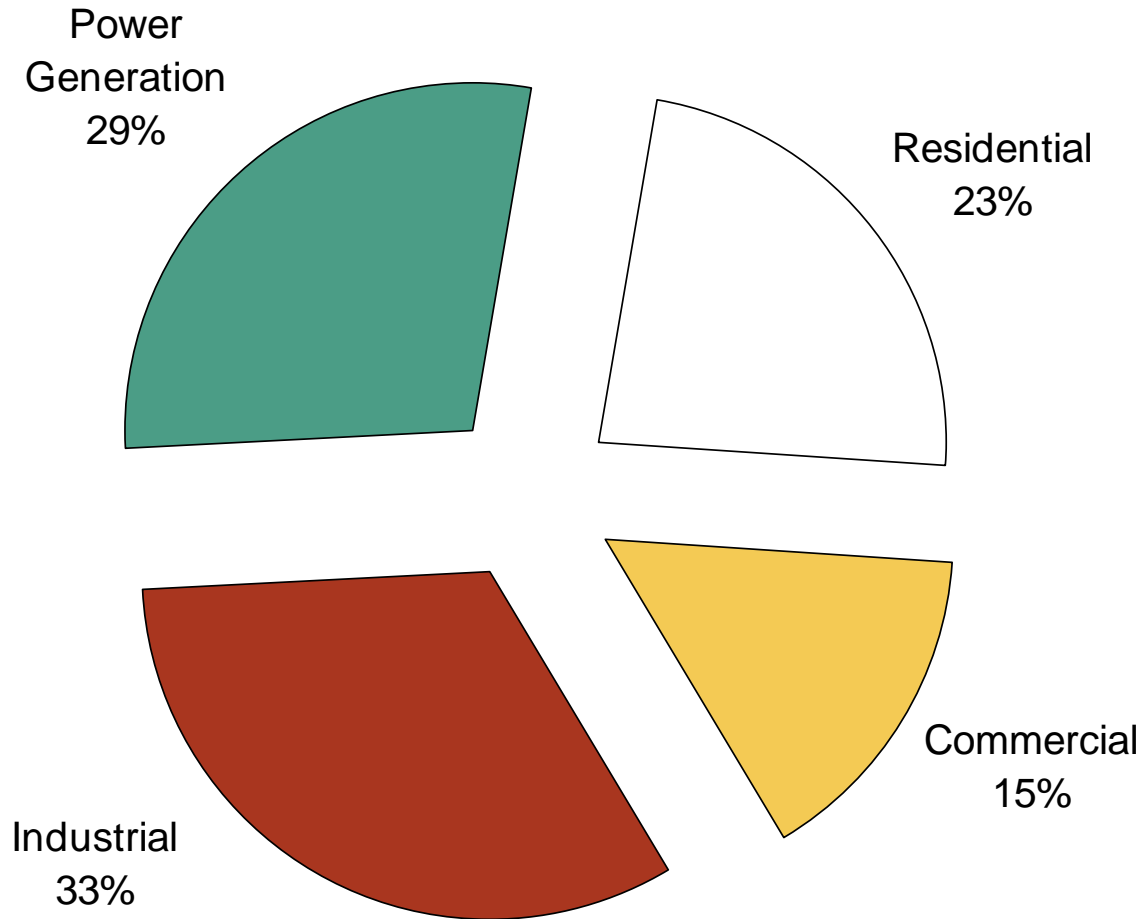
Henry Hub Natural Gas Daily Spot Prices 2006, 2007 and 2002-2006 Year Range



Source: Derived from *Platts* data.

Updated December 7, 2007

U.S. Natural Gas Demand Shares by Sector in 2005

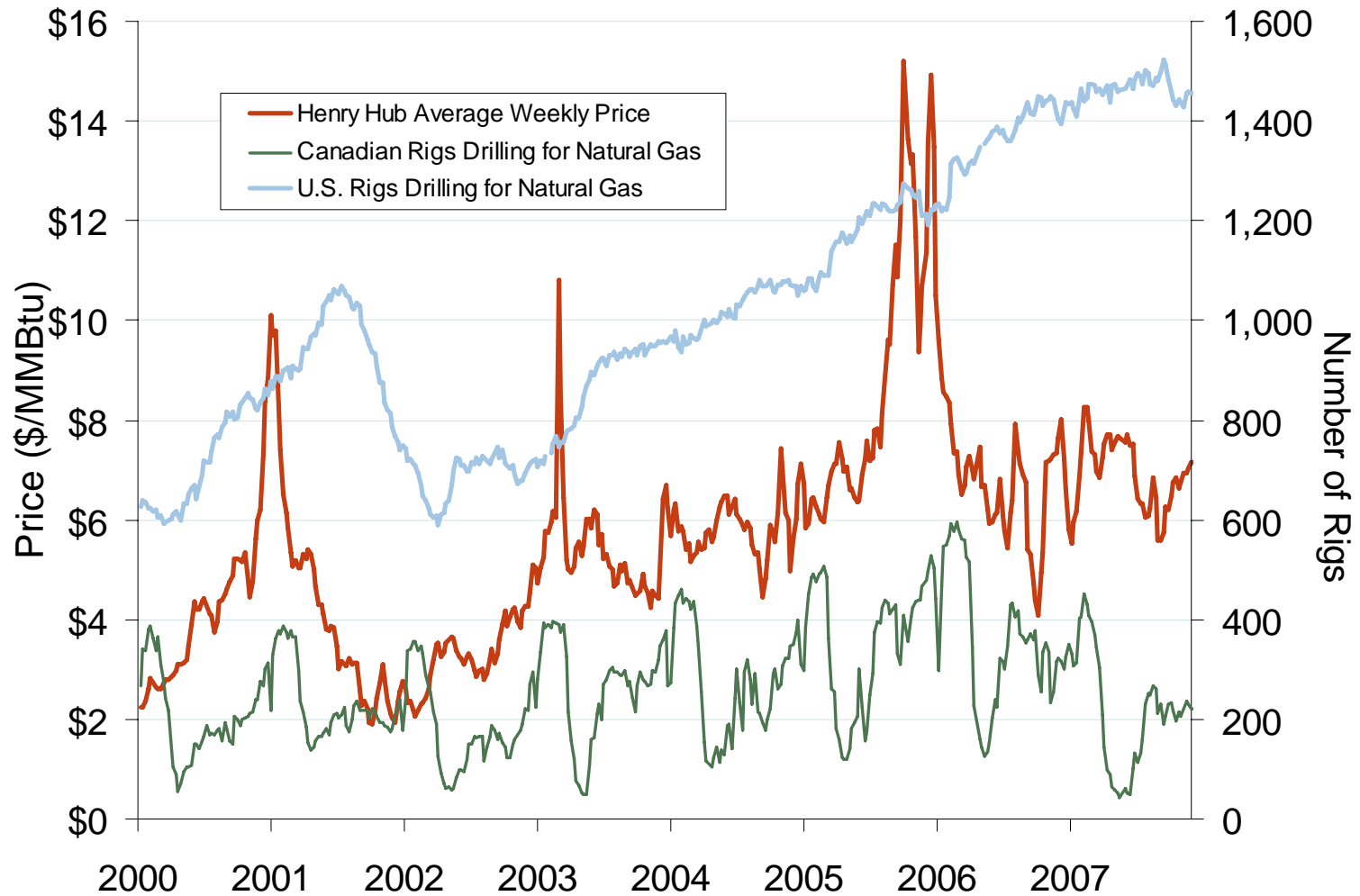


Source: Derived from EIA data.

Updated February 10, 2007

2002

U.S. and Canadian Natural Gas Drilling Rig Count and Daily Spot Prices

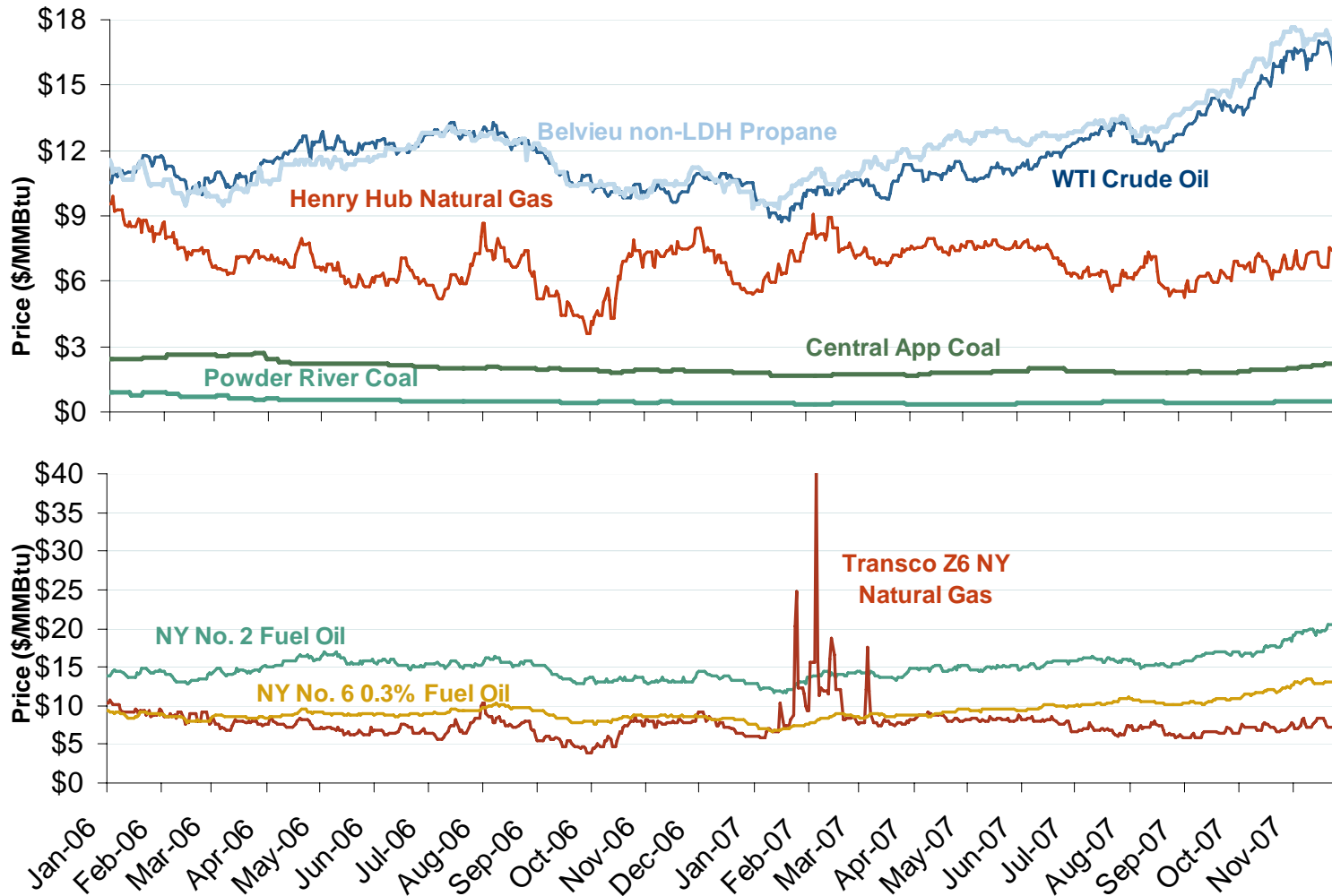


Source: Derived from *Platts* and *Baker Hughes* data.

Updated December 7, 2007

2007

Oil, Coal and Natural Gas Daily Spot Prices

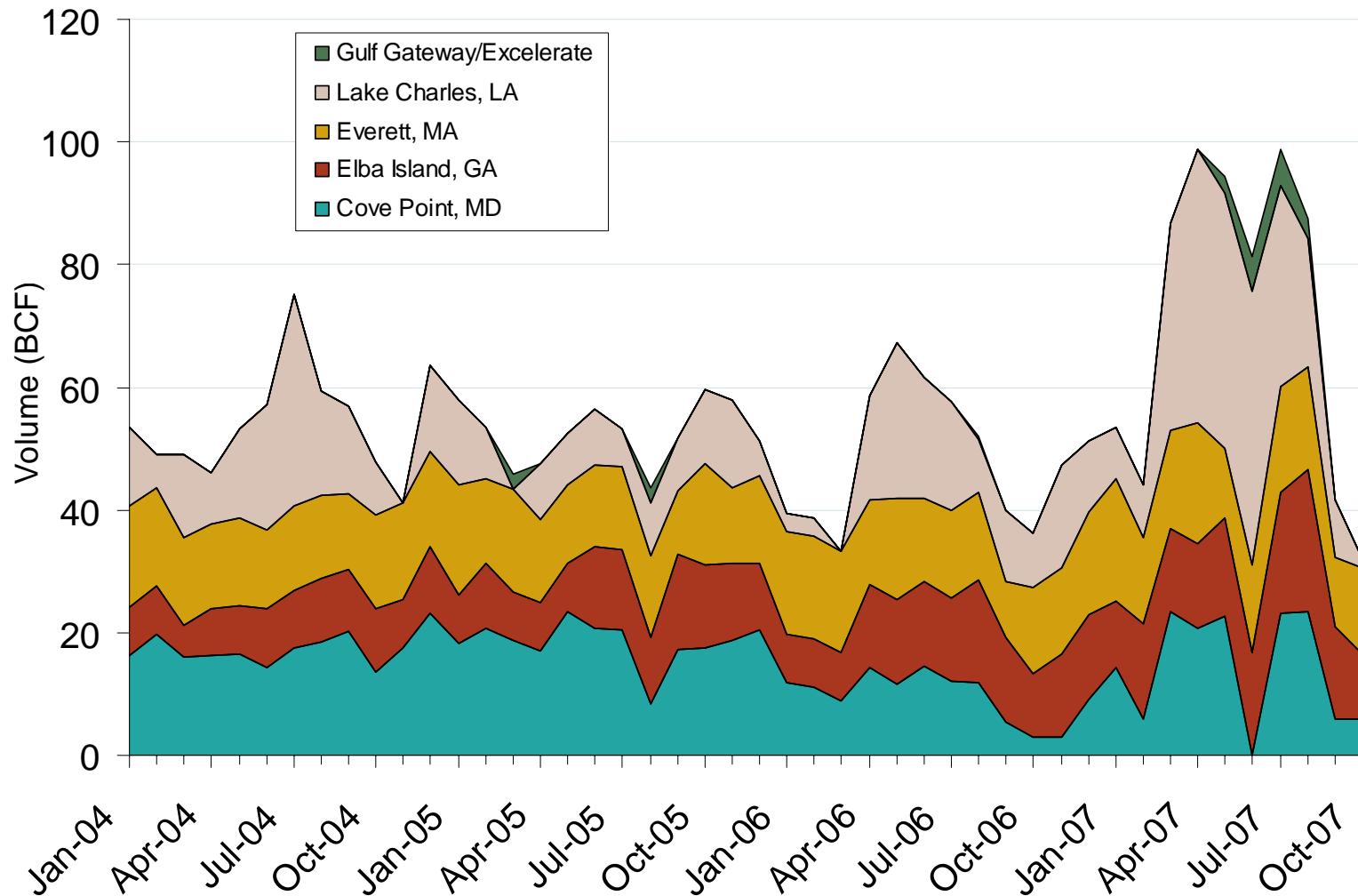


Source: Derived from ICE and Bloomberg data.

Note: Coal prices are quoted in \$/ton. Conversion factors to \$/MMBtu are based on contract specifications of 12,000 btus/pound for Central Appalachian coal and 8800 btus/pound for Powder River Basin coal.

Updated December 7, 2007

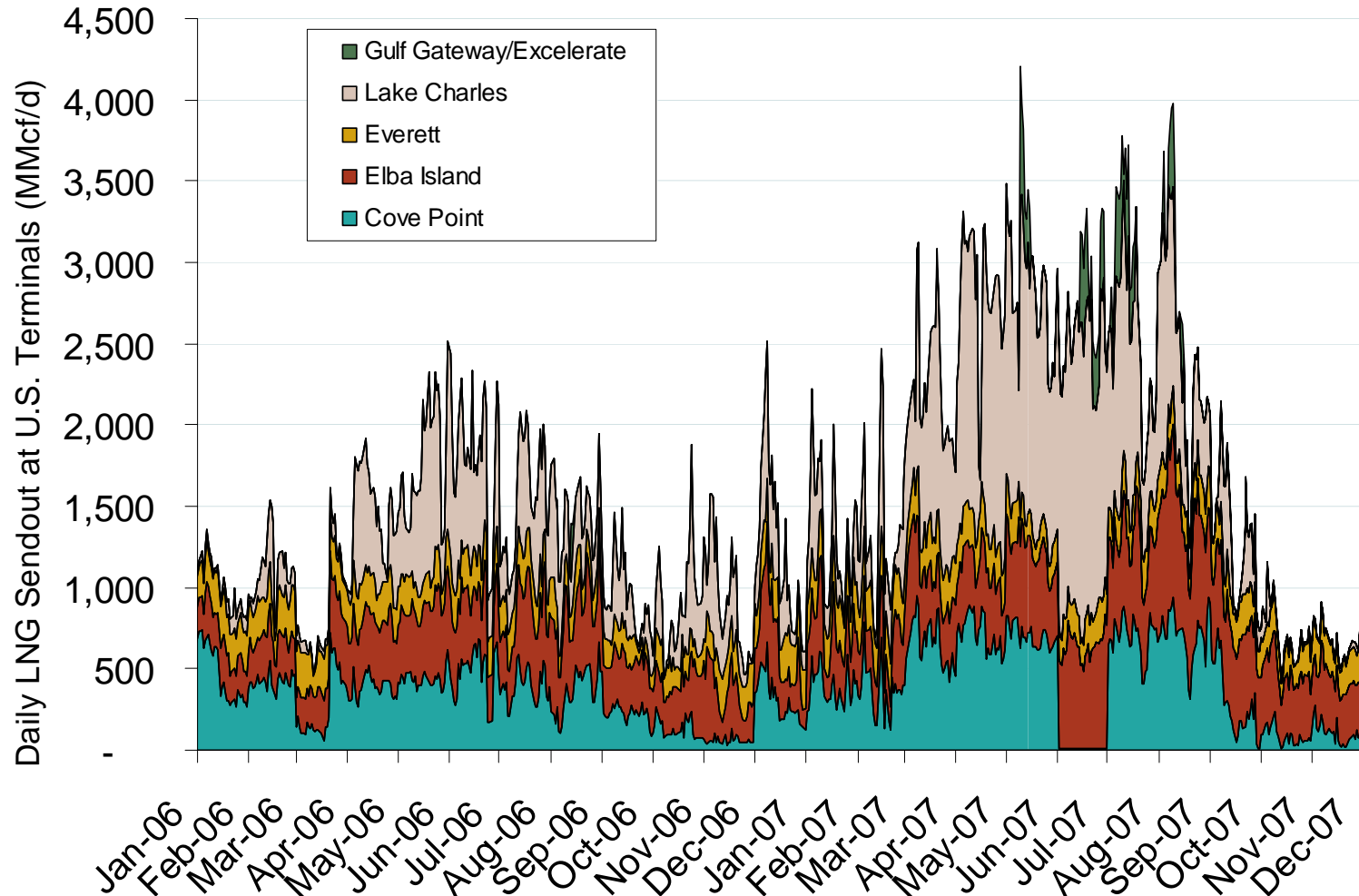
Monthly Gas Imports at Existing U.S. LNG Facilities



Source: Derived from EIA data.

Updated December 7, 2007

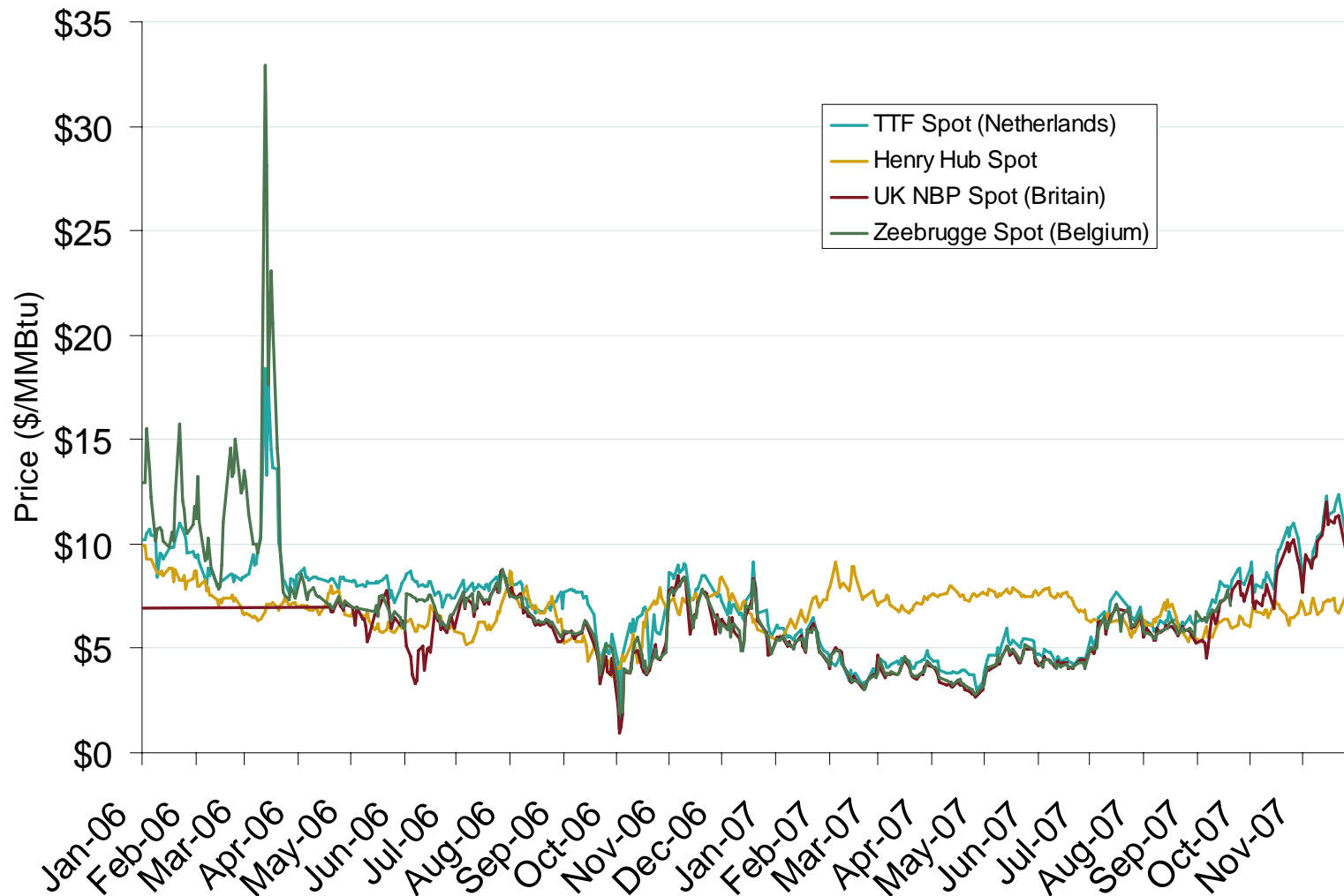
Daily Gas Sendout from Existing LNG Facilities



Source: Derived from *Bentek* data. Excludes Everett LNG delivered via truck and consumed by the Mystic plant.

Updated December 7, 2007

European and U.S. Spot Natural Gas Prices

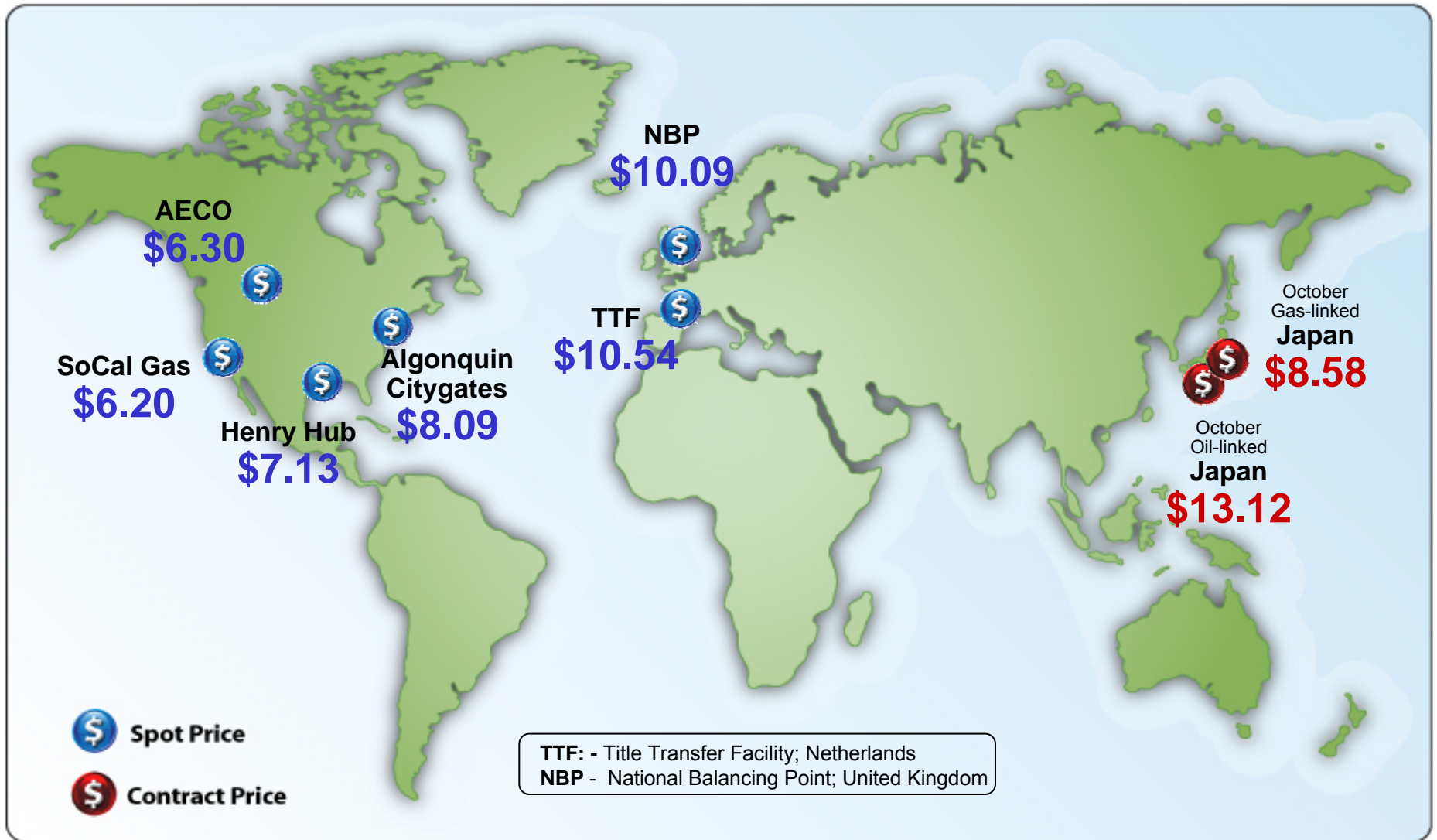


Source: Derived from *Bloomberg* and *ICE* data.

Updated December 7, 2007

2162

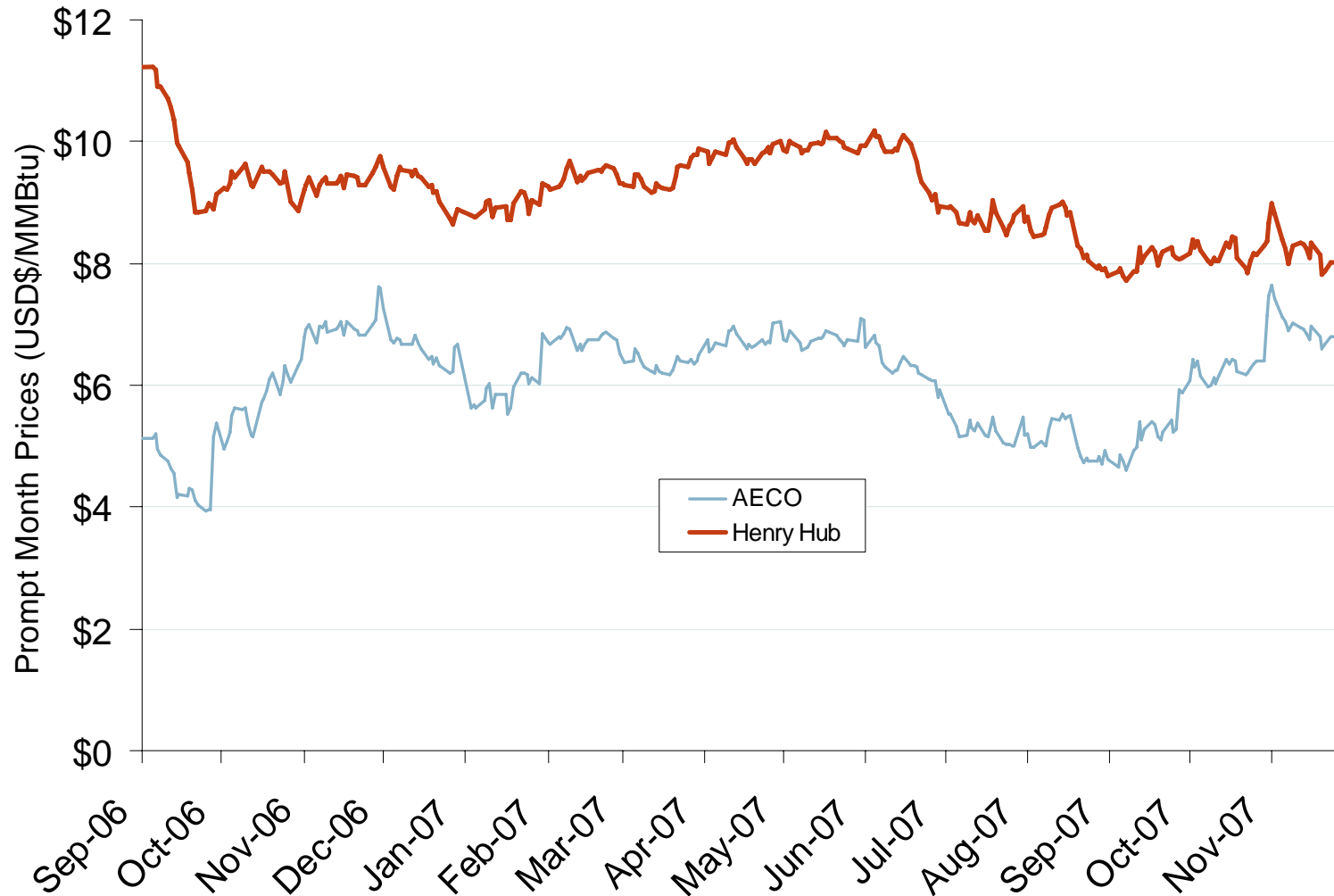
World Natural Gas Prices for December 2007



Source: Derived from *Bloomberg, ICE, ICAP and LNG Japan Corp.* data. Spot Price is a monthly average of daily prices. Contract Price is a monthly price. All prices in \$US/MMBtu.

Updated December 7, 2007

Henry Hub and AECO Prompt-Month Futures Prices



Source: Derived from ICE data.

Updated December 7, 2007