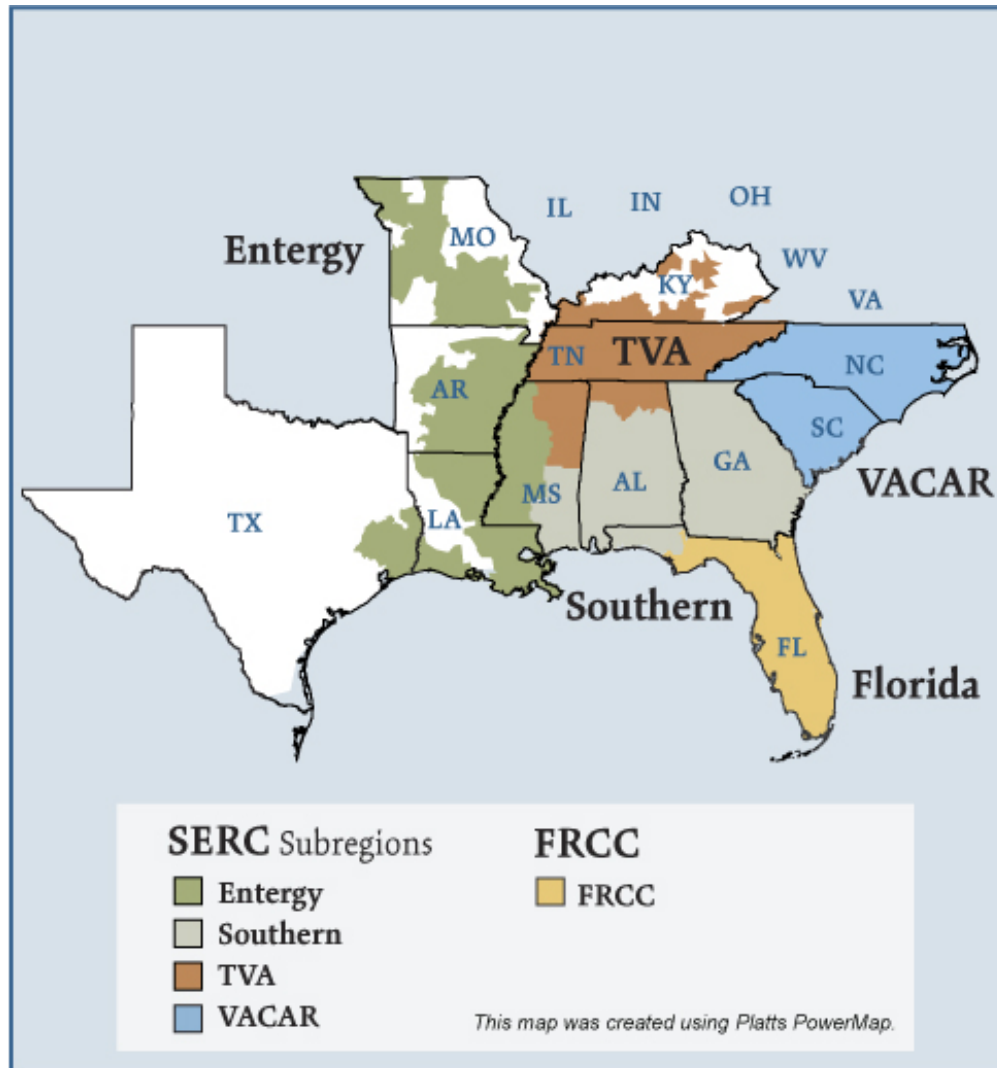


## Southeast Electric Regions



## Overview

### Market Description

Florida Reliability Coordinating Council (FRCC) and SERC Reliability Corporation (SERC) reliability regions minus the portions of SERC in the Midwest ISO (MISO) and in PJM.

### Geography

States covered: All or most of Florida, Arkansas, Louisiana, Mississippi, Alabama, Georgia, Tennessee, North Carolina, South Carolina and parts of Missouri, Kentucky and Texas.

Reliability region: Southeastern Electric Reliability Council (SERC) and Florida Reliability Coordinating Council (FRCC)

Balancing authorities: See list on page 5 and 6.

Hubs: Entergy, Southern, TVA

### RTO/ISO

None

### Generation/Supply

Marginal fuel type: Coal and natural gas

Generating capacity (summer 2006): 299,712 MW

Capacity reserve (summer 2006): 64,188 MW

Reserve margin (summer 2006): 27%

## Demand

All time peak demand: 237,100 MW (2005)

In summer of 2006, demand in parts of the region, such as the Southern Company service area, reached record levels on several occasions due to extremely hot weather.

Peak demand growth: -0.6% (2005–2006)

Summer Peak Demand (MW): 237,100 (2005) 235,524 (2006)

*Source:* Derived from *SERC* and *FRCC* data and discussions.

## Prices

Annual Average of Daily Bilateral Day Ahead On-Peak Prices

Platts “Into Southern” Index

2004: \$48.64/MWh

2005: \$70.84/MWh

2006: \$55.50/MWh

2007: \$59.10/MWh

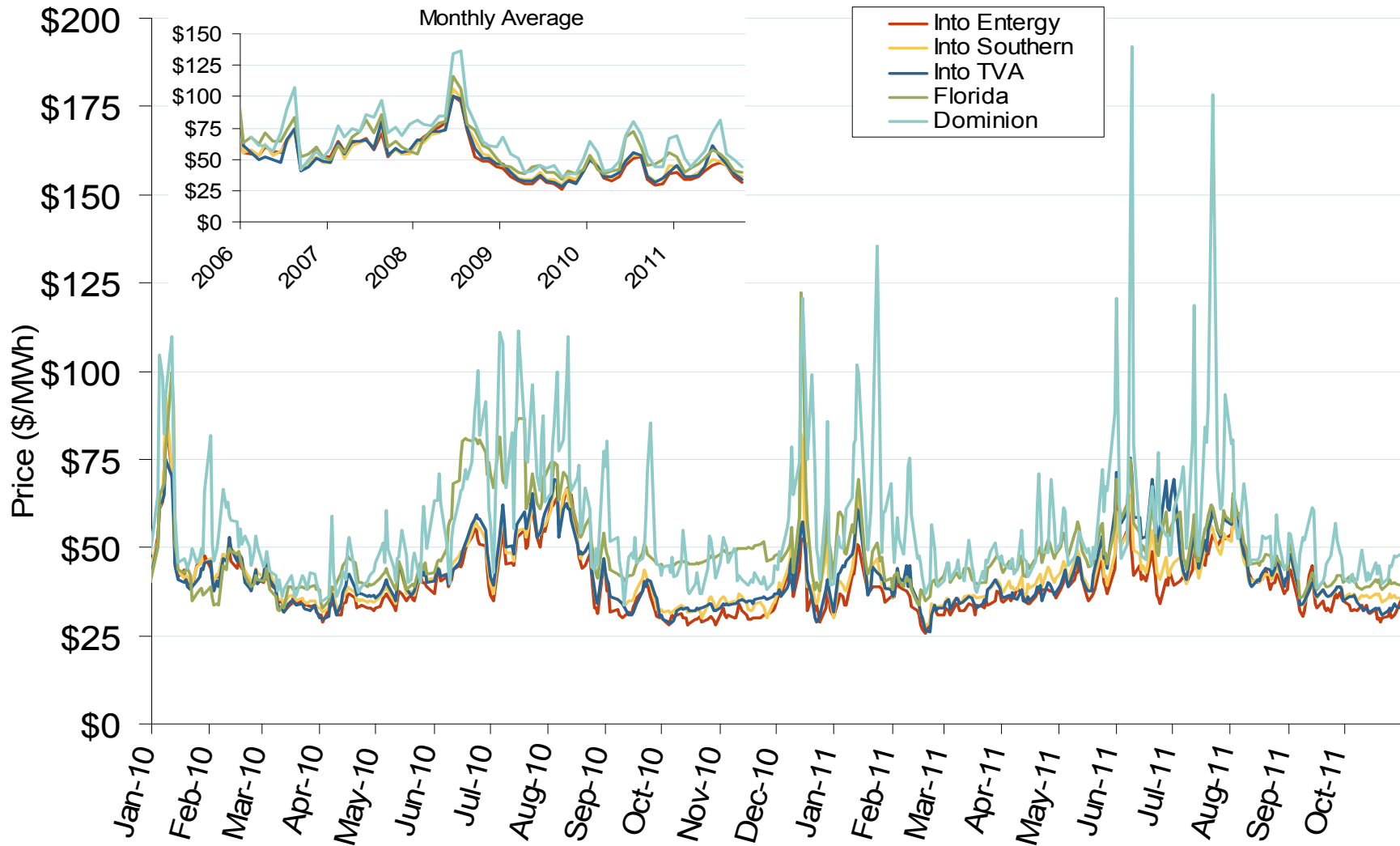
## Southeast Annual Average Bilateral Prices

Annual Average Day Ahead On Peak Prices (\$/MWh)						
	2006	2007	2008	2009	2010	5-Year Avg
VACAR	\$56.34	\$60.52	\$70.86	\$36.42	\$43.24	\$53.48
Southern	\$55.50	\$59.10	\$70.13	\$36.58	\$42.61	\$52.79
TVA	\$53.48	\$60.28	\$69.01	\$34.91	\$41.79	\$51.90
Florida	\$64.02	\$65.59	\$74.66	\$40.75	\$50.81	\$59.17
Entergy	\$56.28	\$59.74	\$68.49	\$33.57	\$40.07	\$51.63

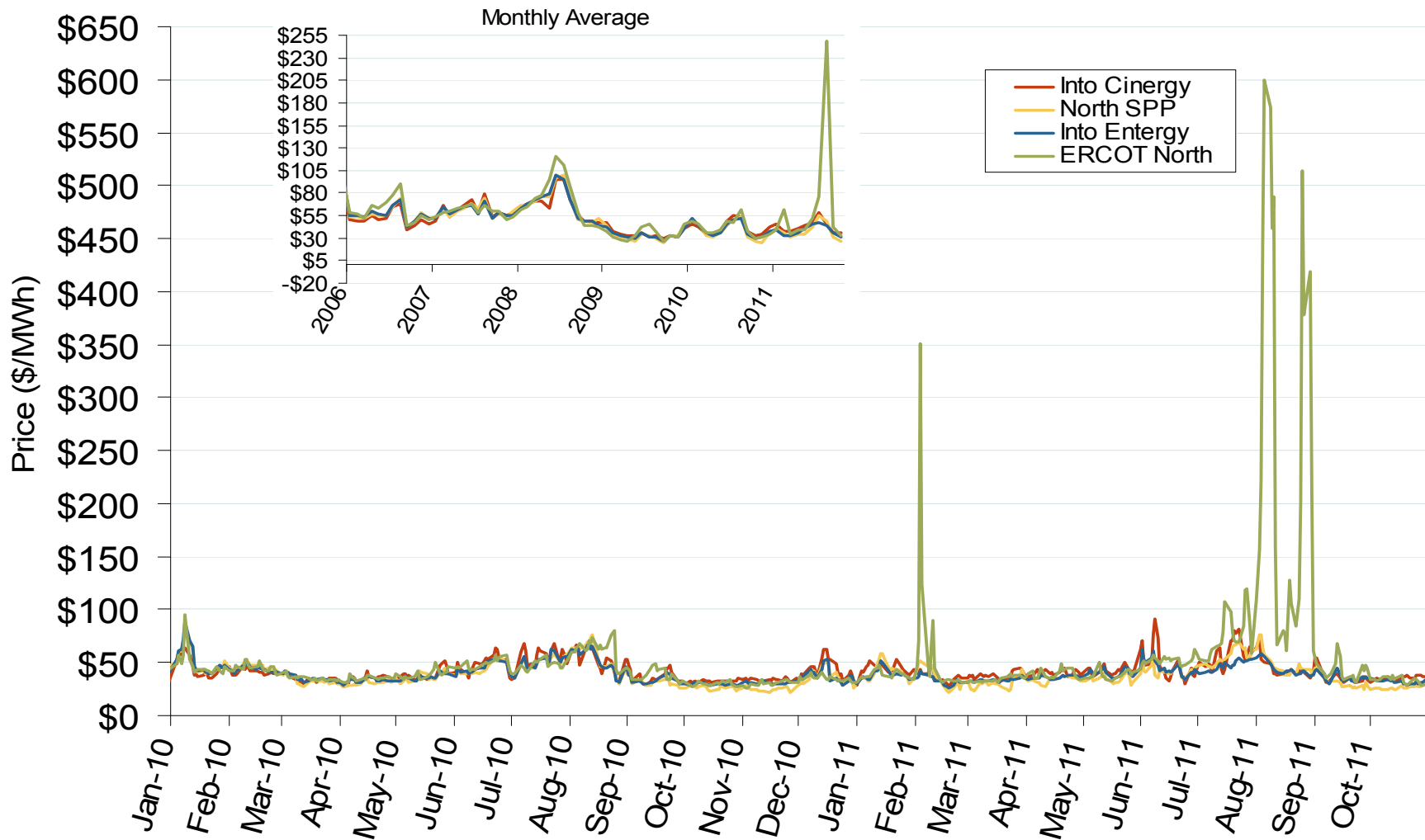
Southeast Electric Market: Southeastern Bilateral Prices

Federal Energy Regulatory Commission • Market Oversight • [www.ferc.gov/oversight](http://www.ferc.gov/oversight)

## Southeastern Daily Bilateral Day-Ahead On-Peak Prices



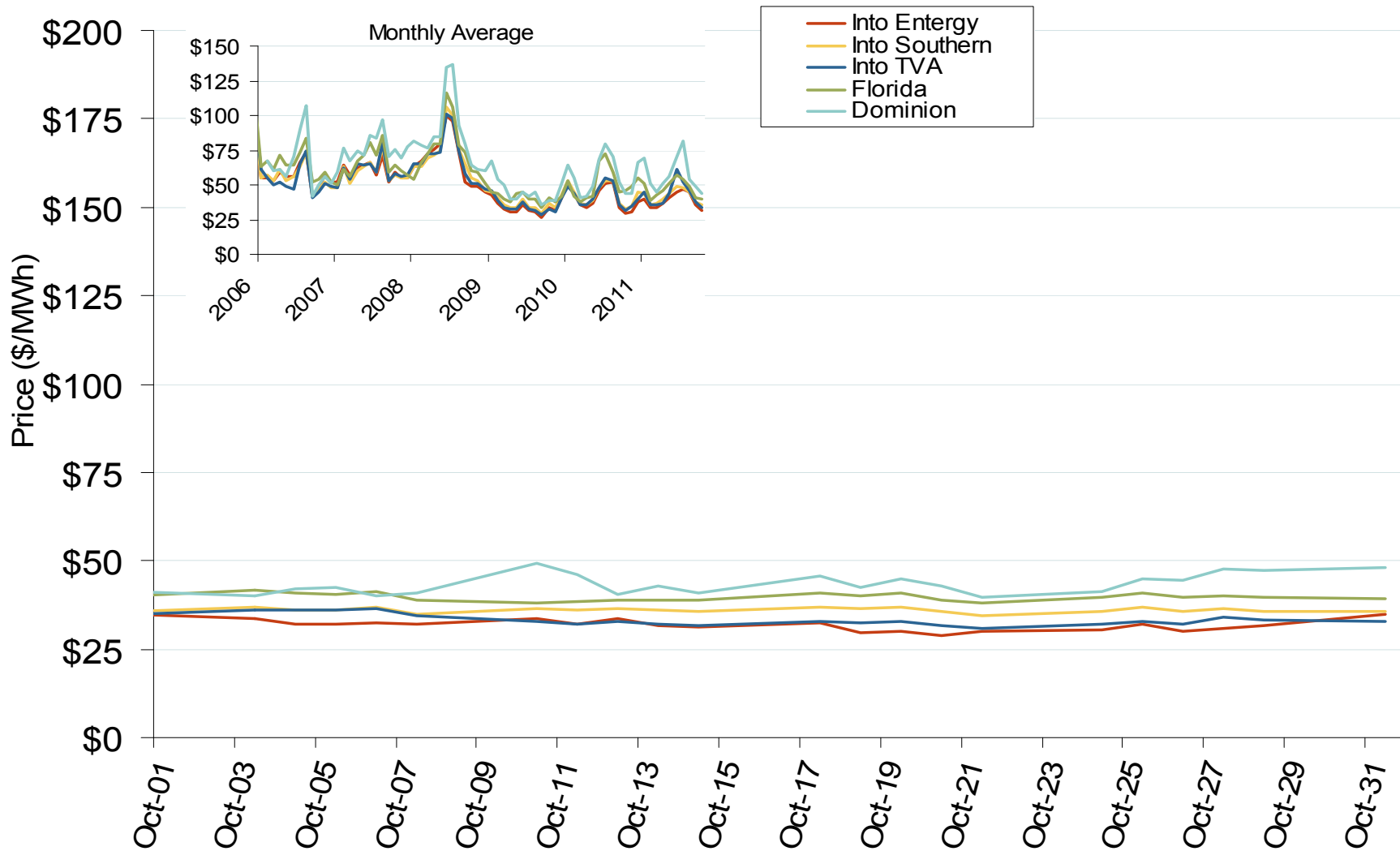
## Midwestern Daily Bilateral Day-Ahead On-Peak Prices



Southeast Electric Market: Last Month's Southeastern Bilateral Prices

Federal Energy Regulatory Commission • Market Oversight • [www.ferc.gov/oversight](http://www.ferc.gov/oversight)

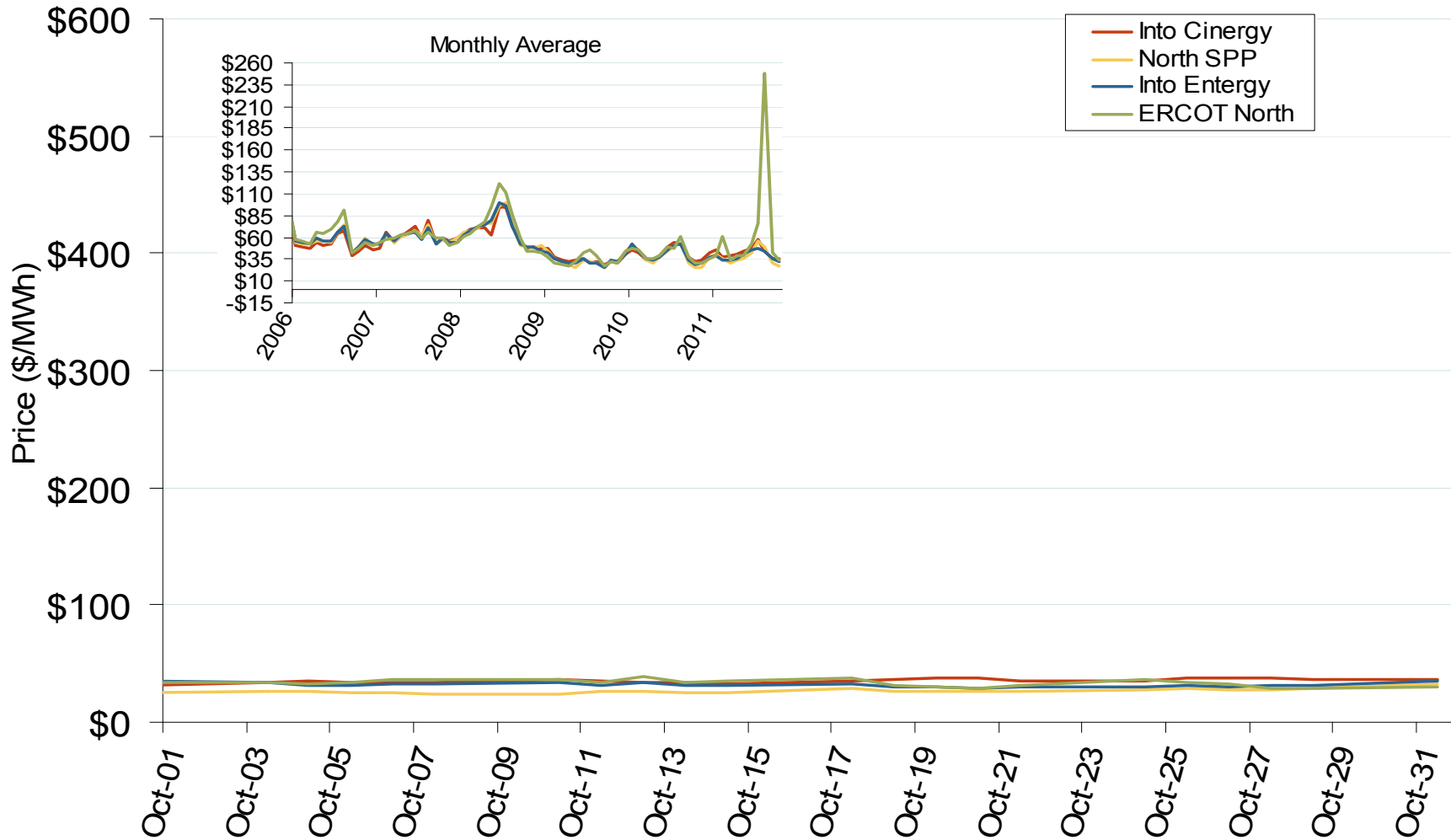
## Southeastern Daily Bilateral Day-Ahead On-Peak Prices



Southeast Electric Market: Last Month's Midwestern Bilateral Prices

Federal Energy Regulatory Commission • Market Oversight • [www.ferc.gov/oversight](http://www.ferc.gov/oversight)

## Midwestern Daily Bilateral Day-Ahead On-Peak Prices

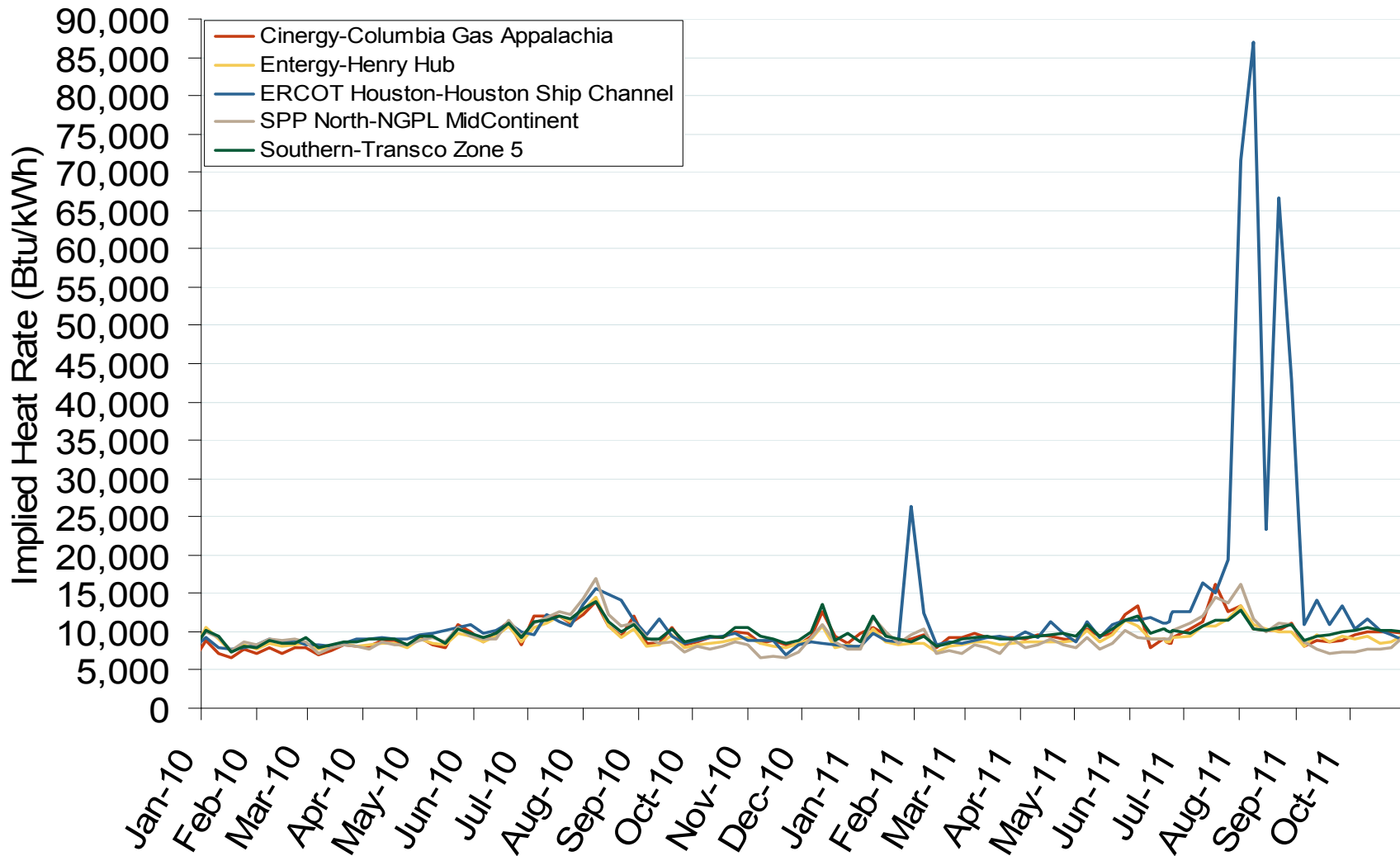




Southeast Electric Market: South Central Implied Heat Rates

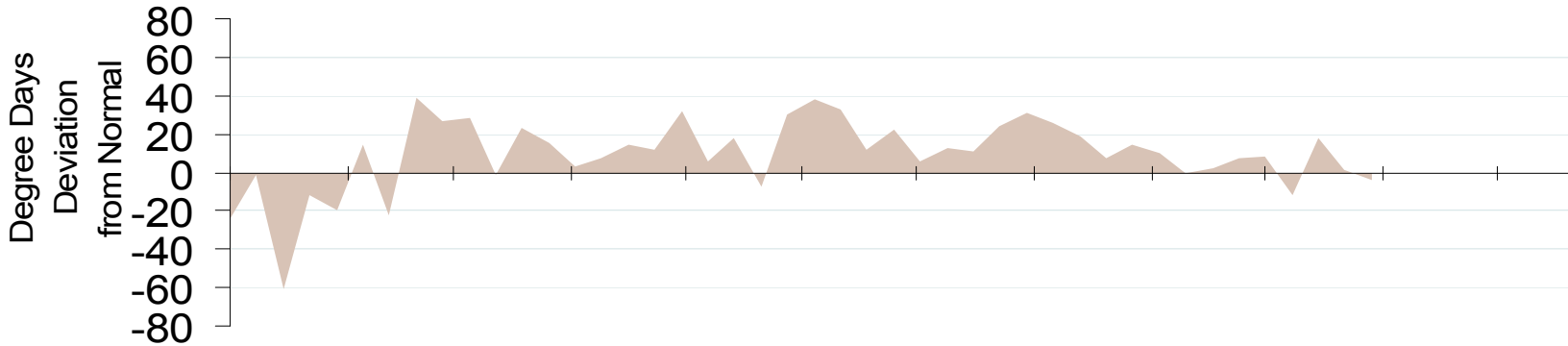
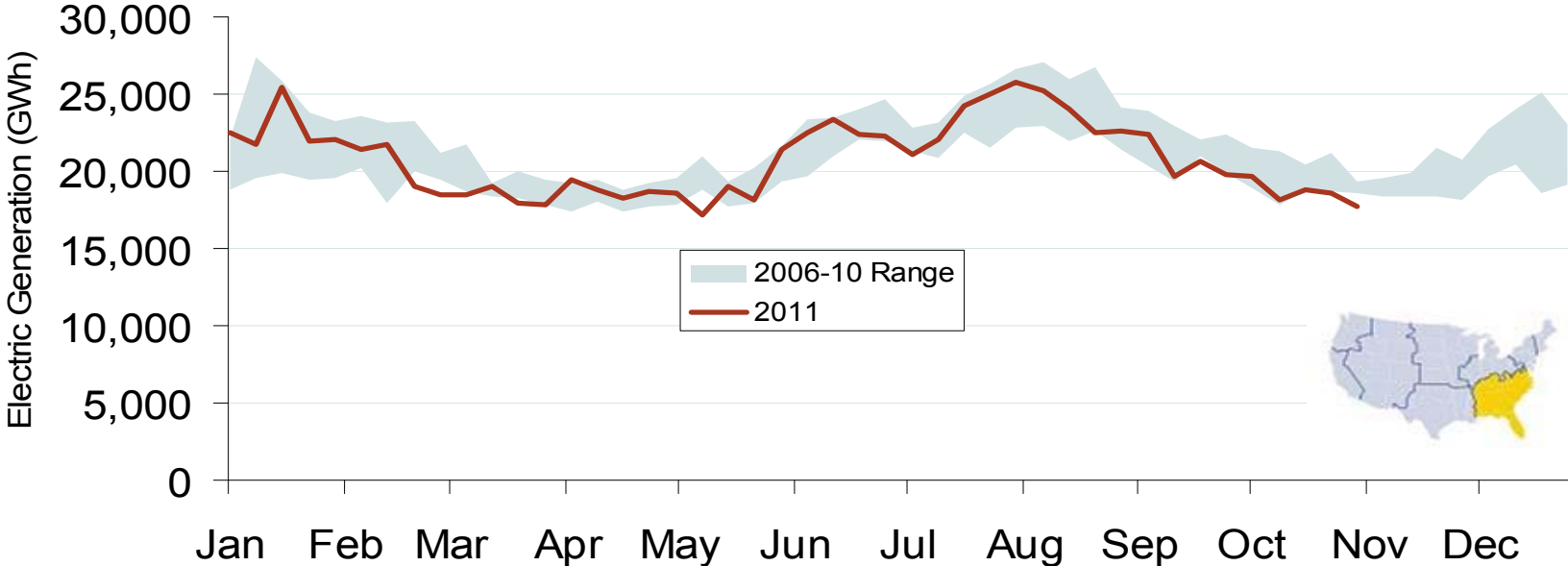
Federal Energy Regulatory Commission • Market Oversight • [www.ferc.gov/oversight](http://www.ferc.gov/oversight)

**Implied Heat Rates at South Central Trading Points - Weekly Avgs.**



Source: Derived from Platts on-peak electric and natural gas price data

### Weekly Power Generation & Temps. - Southeast



# Monthly Southeastern Hydroelectric Generation

