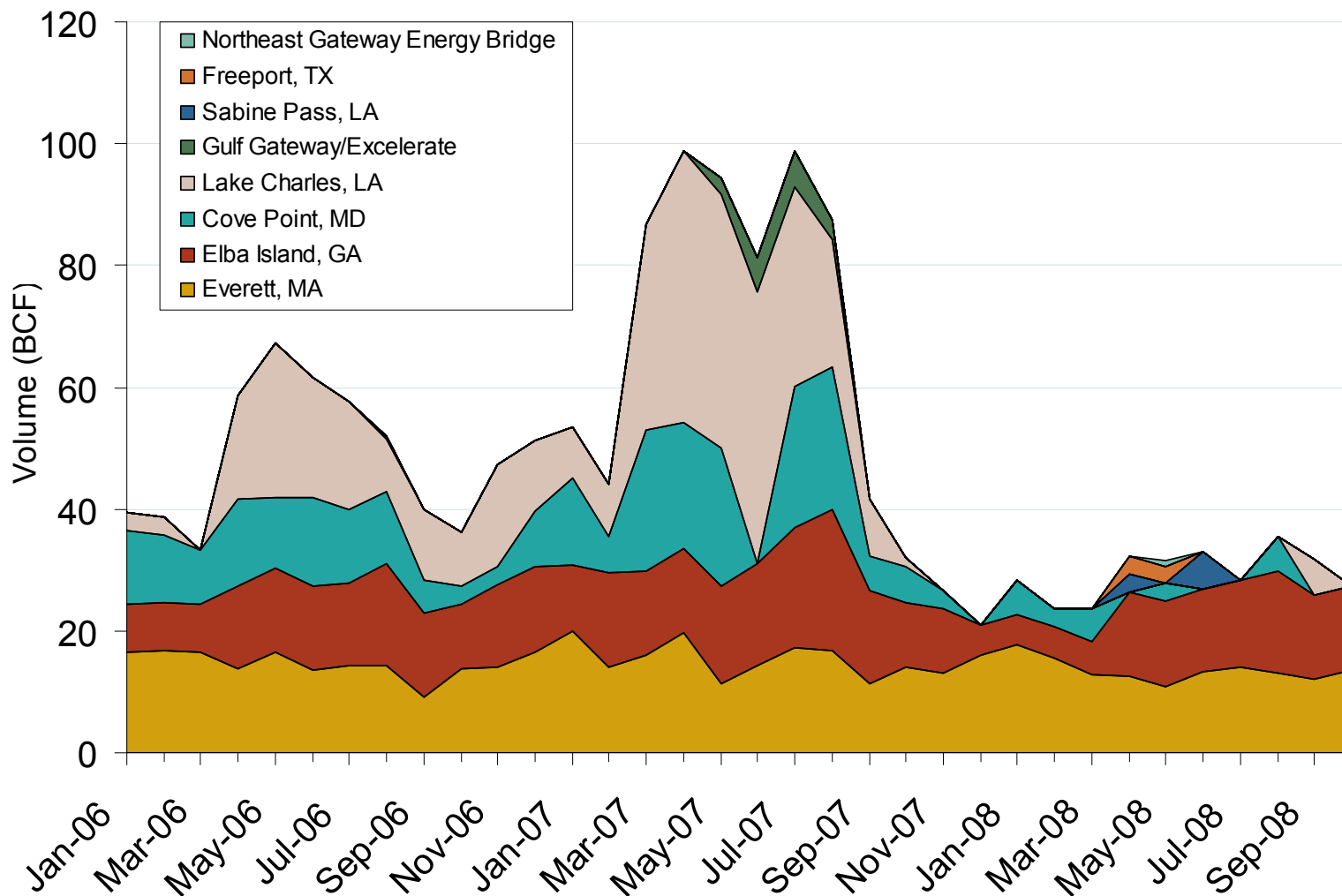


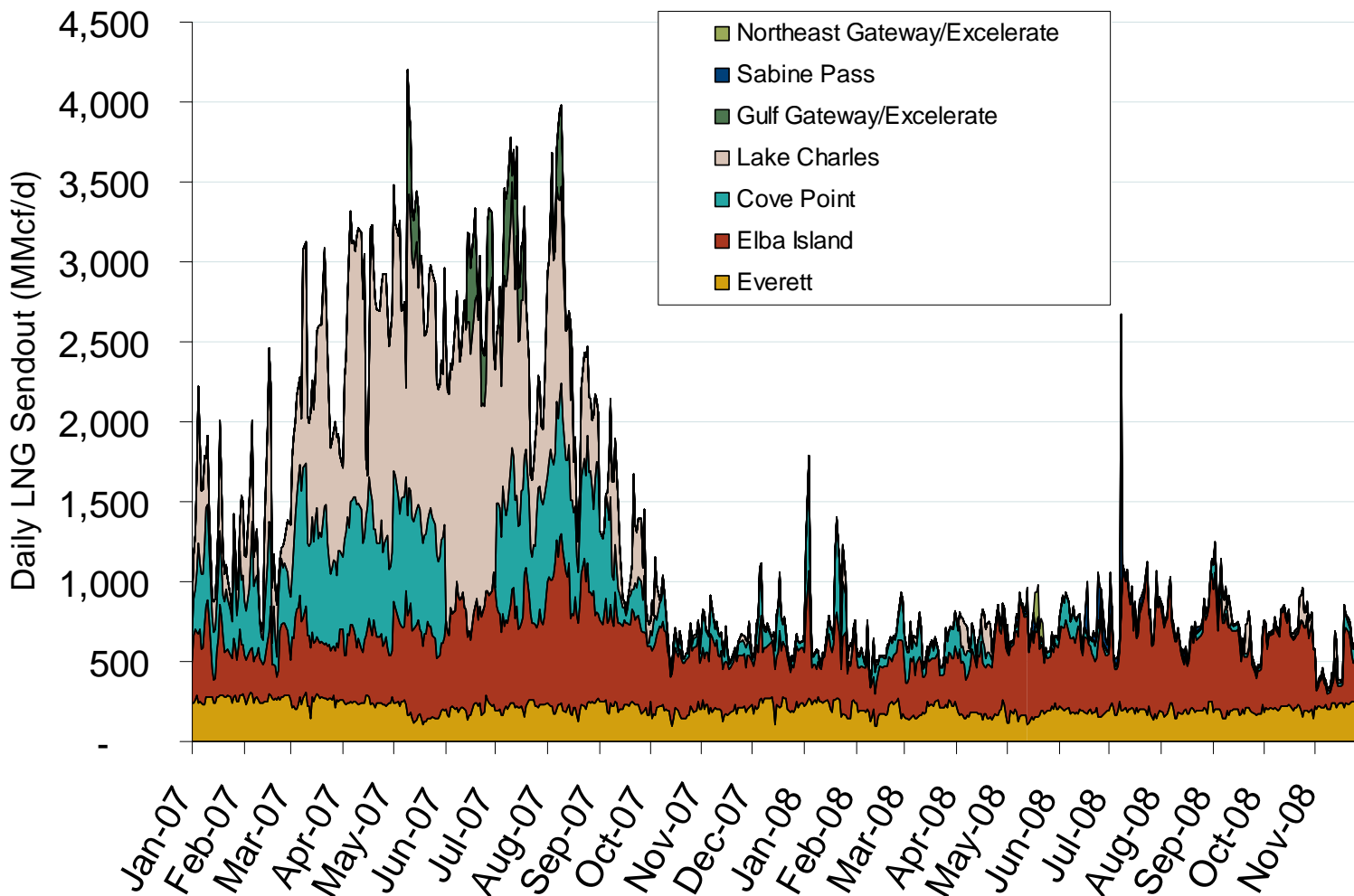
Monthly Gas Imports at Existing U.S. LNG Facilities



Source: Derived from DOE Office of Fossil Energy data.

Updated December 5, 2008

Daily Gas Sendout from Existing U.S. LNG Facilities

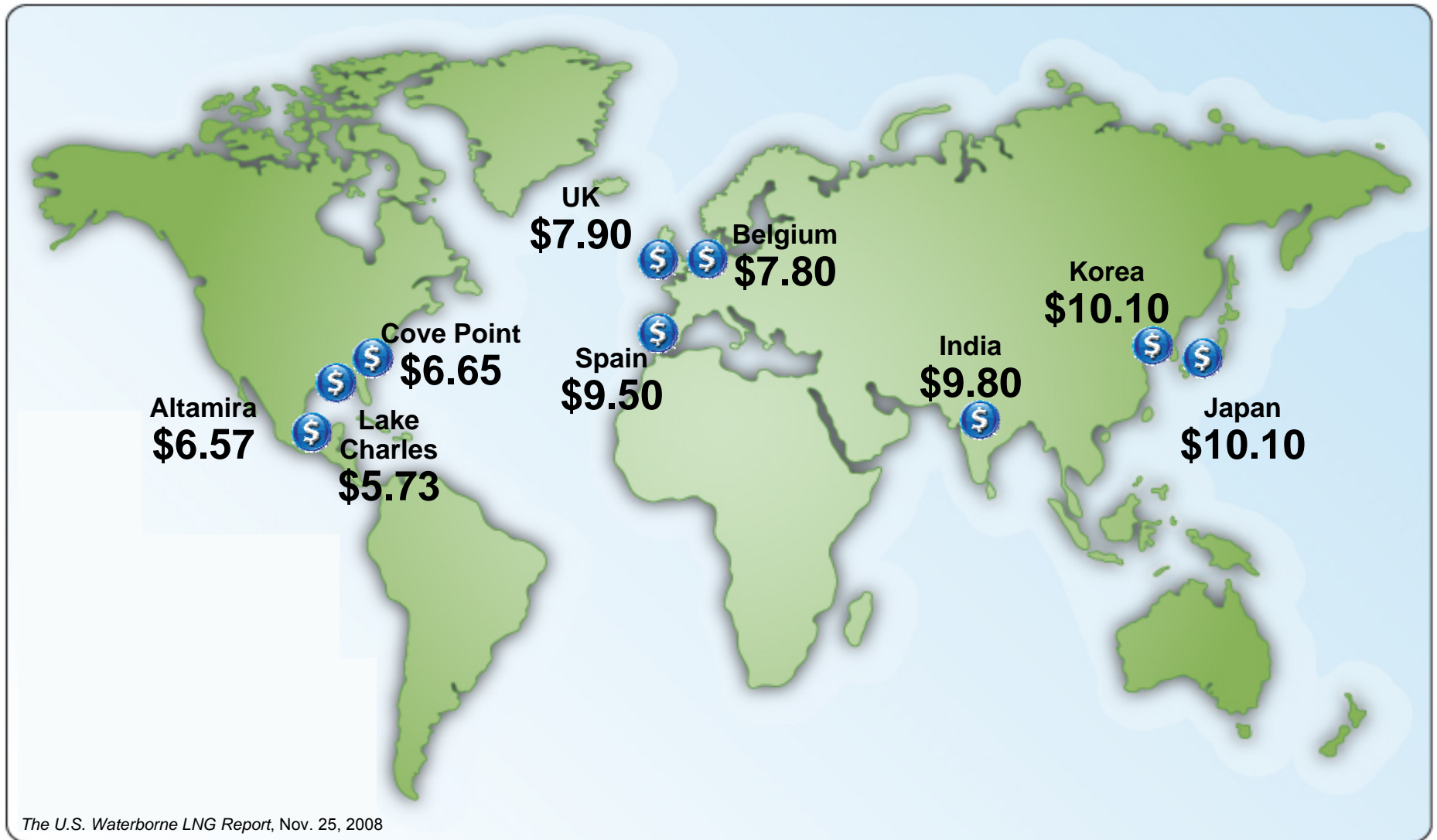


Source: Derived from *Bentek* data. Excludes Everett LNG delivered via truck and consumed by the Mystic plant as well as Freeport LNG which flows via intrastate pipelines.

Updated December 5, 2008

3007

World LNG Estimated December 2008 Landed Prices

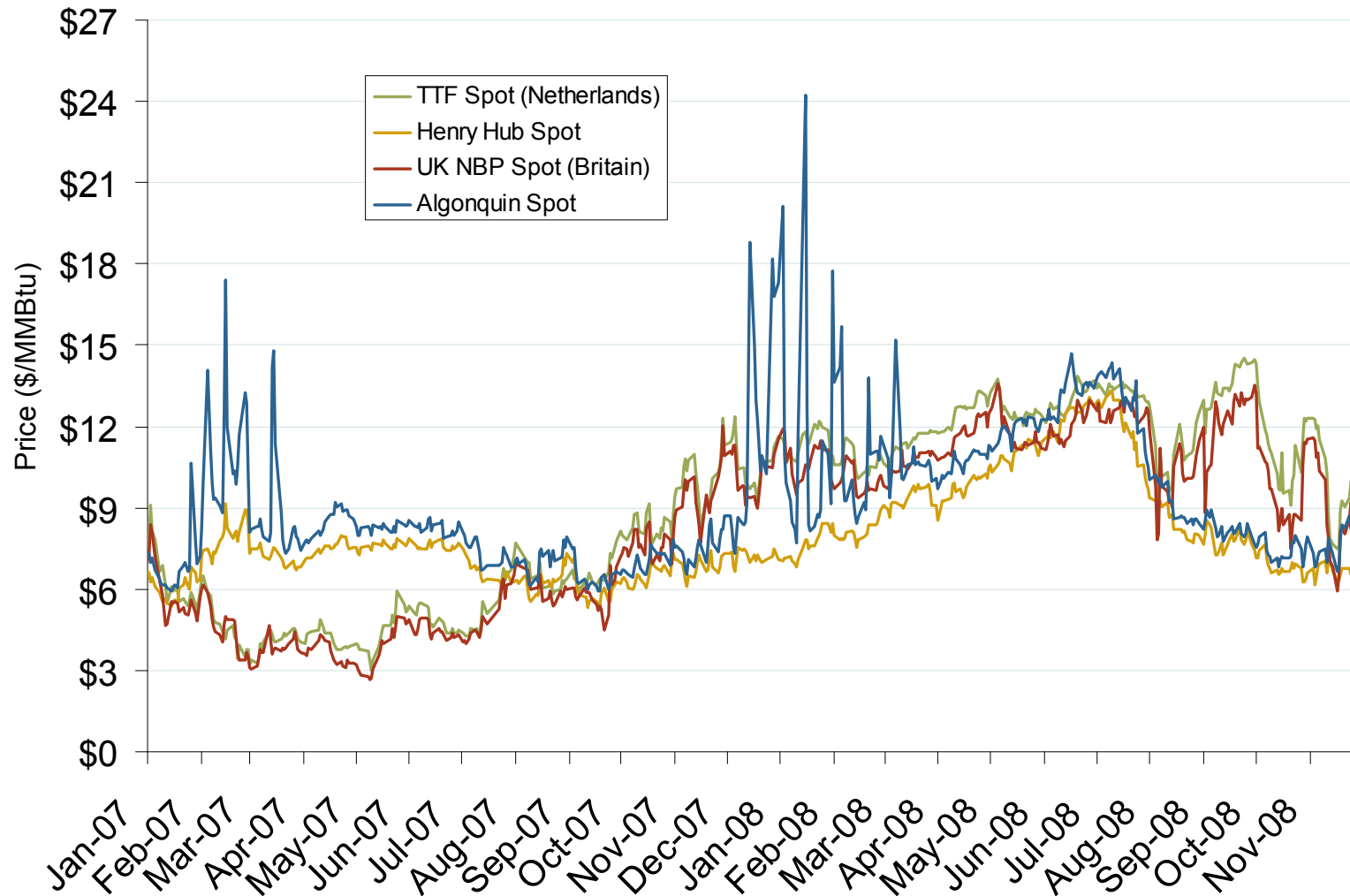


Source: Waterborne Energy, Inc. Data in \$US/MMBtu.

Updated December 5, 2008

3024

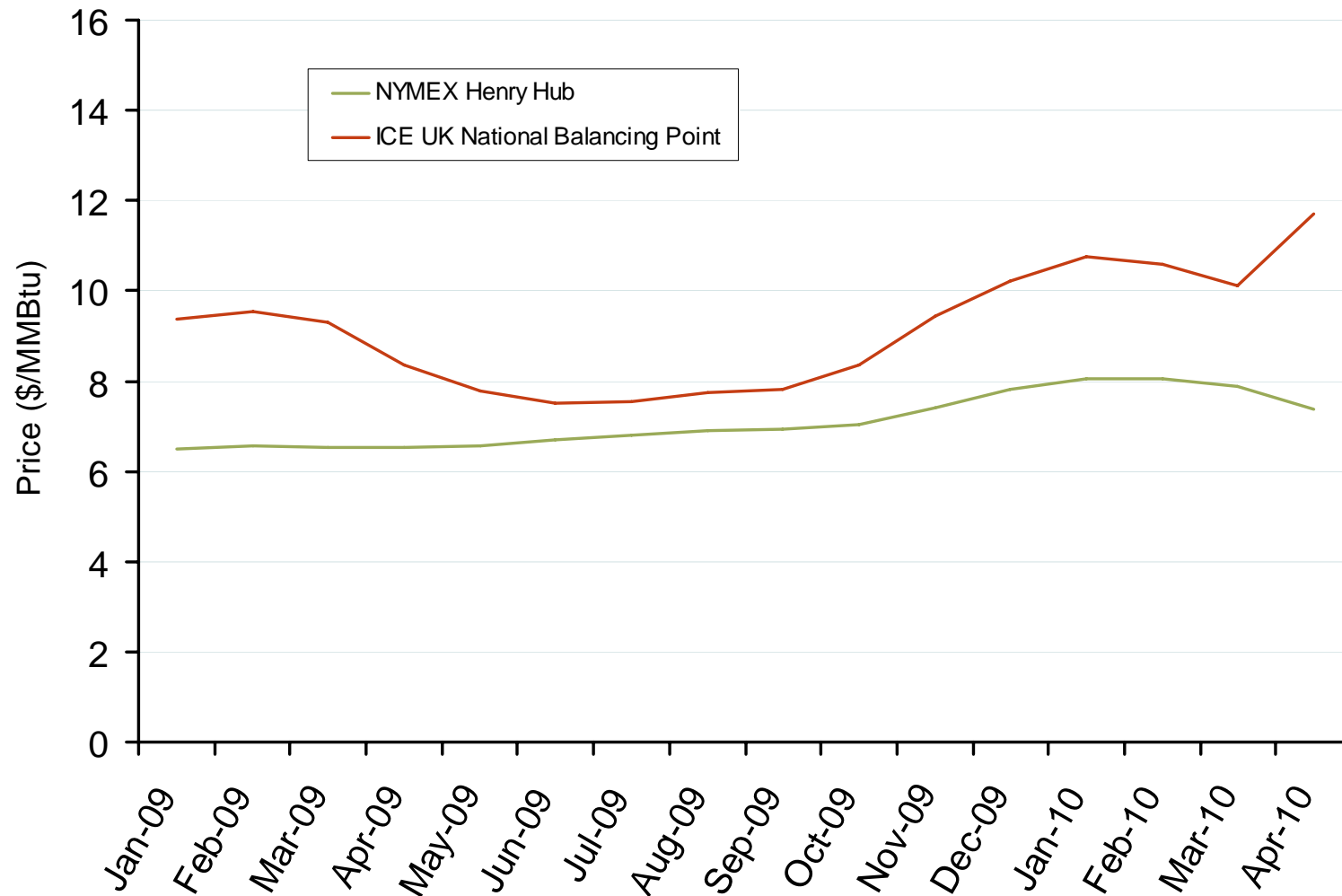
Atlantic Basin European and US Spot Natural Gas Prices



Source: Derived from *Bloomberg* and *ICE* data.

Updated December 5, 2008

NYMEX Henry Hub and ICE UK National Balancing Point Natural Gas Forward Price Curves



Source: Derived from NYMEX and ICE data.

Updated December 5, 2008

3016