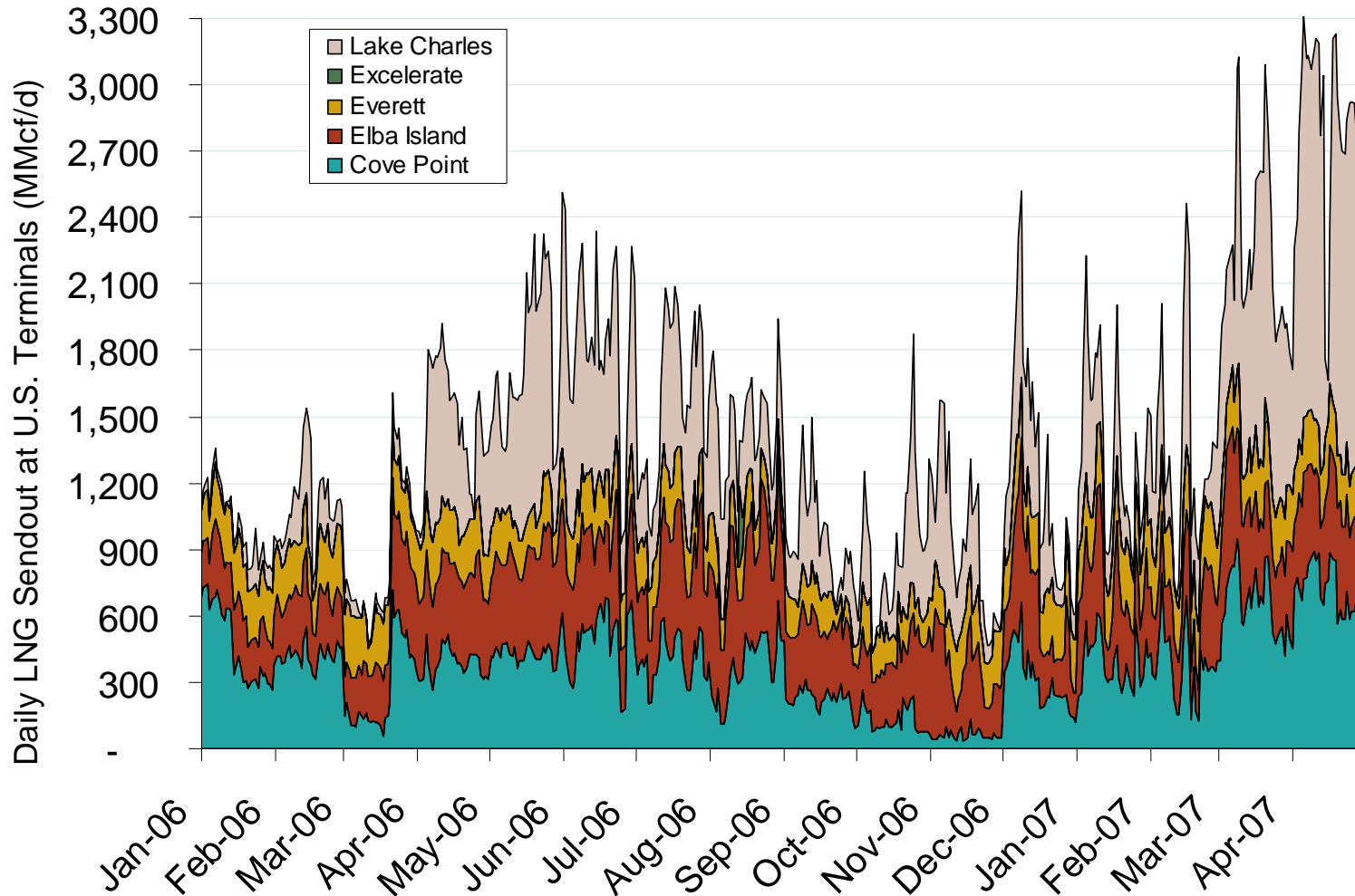


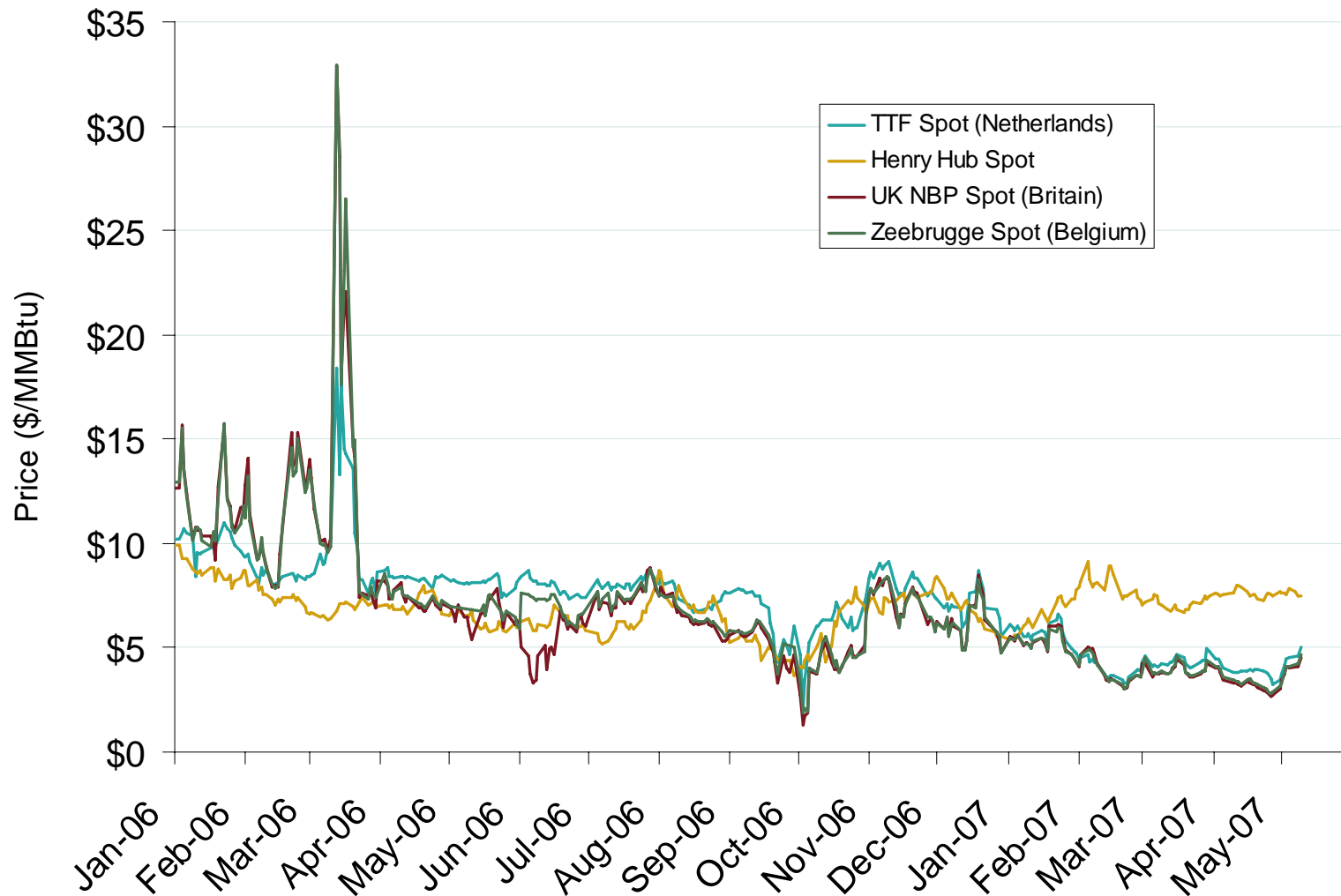
Daily Gas Sendout from Existing LNG Facilities



Source: Derived from *Bentek* data. Excludes Everett LNG delivered via truck and consumed by the Mystic plant.

Updated May 4, 2007

European and U.S. Spot Natural Gas Prices



Source: Derived from *Bloomberg* and *ICE* data.

Corrected May 11, 2007