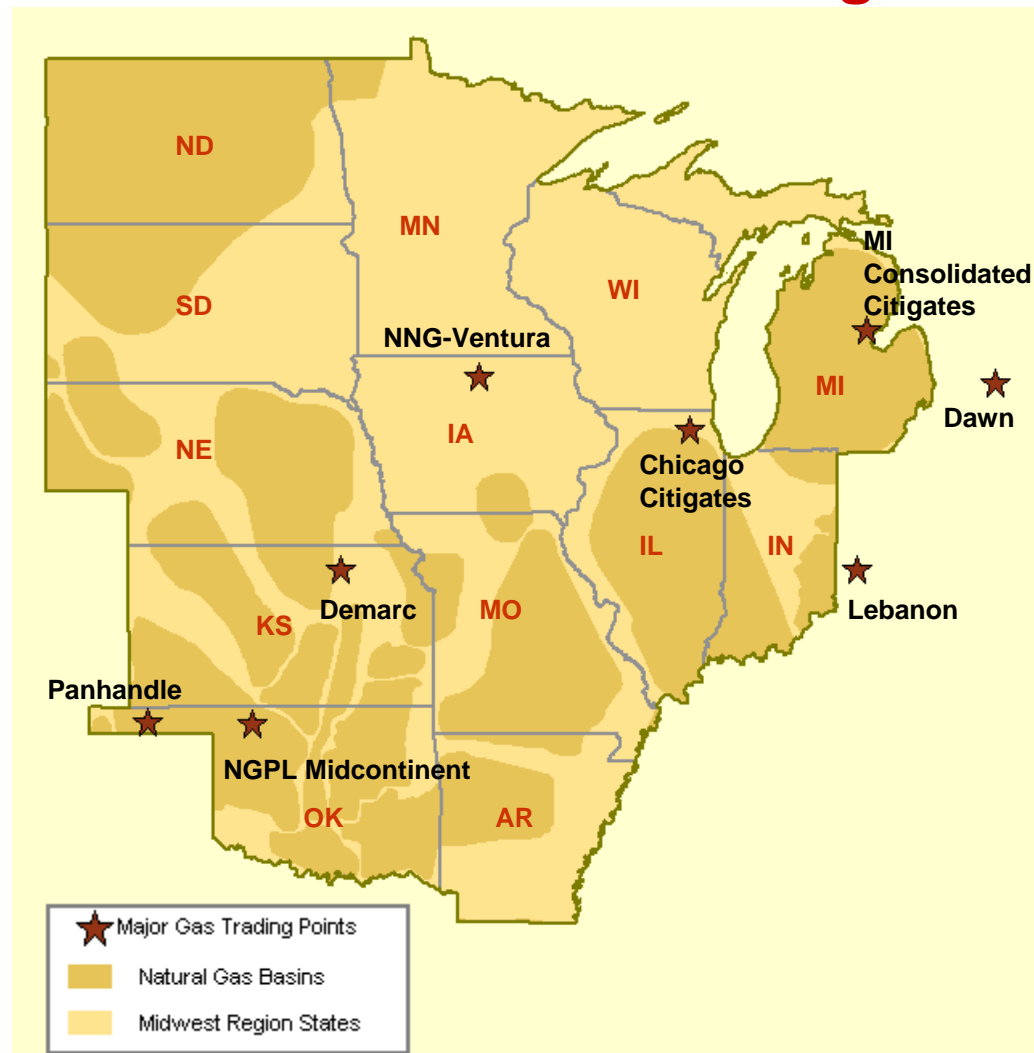


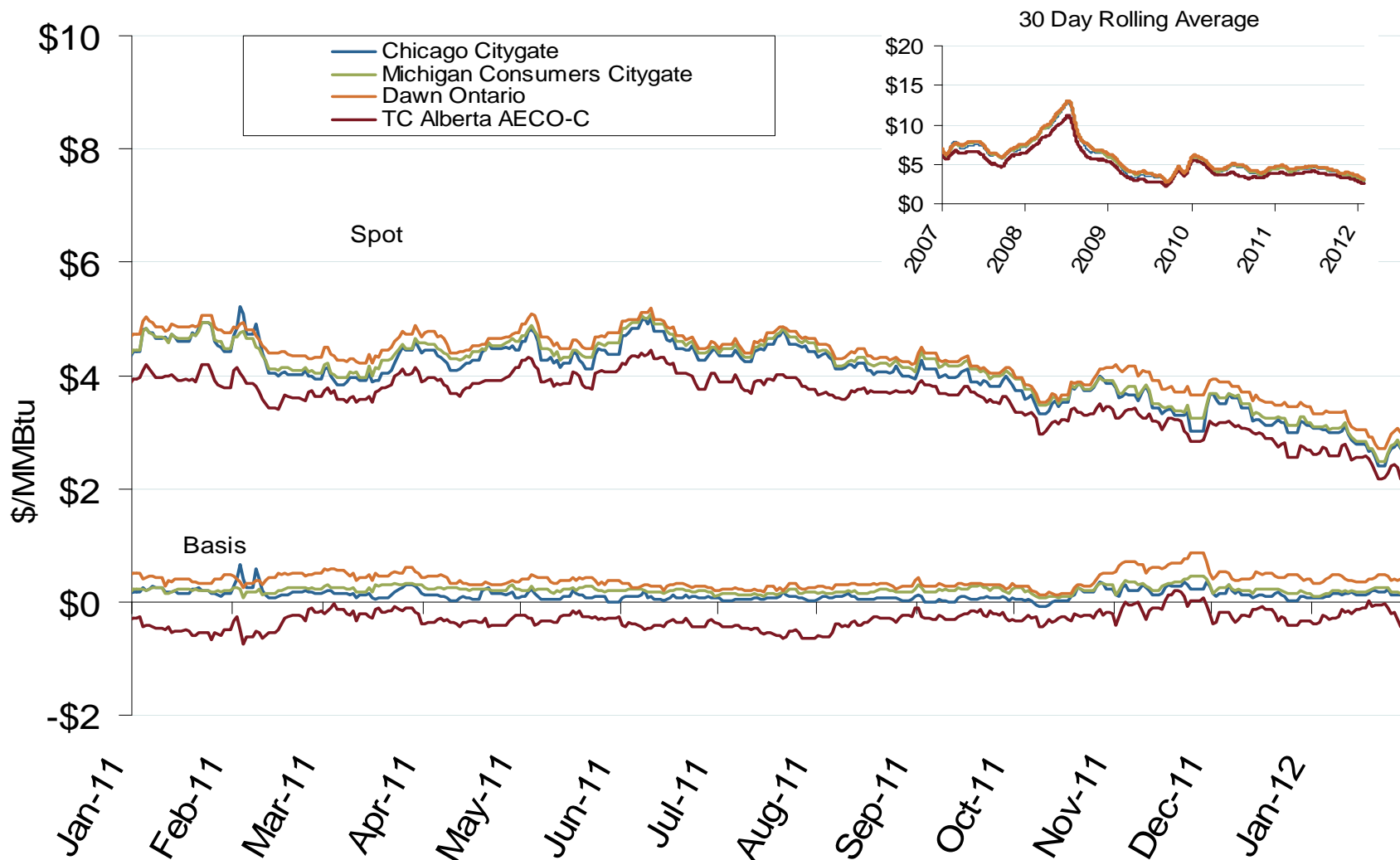
# Midwest Natural Gas Region



## Midwest Annual Average Spot Hub Prices

Annual Average Day Ahead Prices (\$/MMBtu)						
	2006	2007	2008	2009	2010	5-Year Avg
Chicago Citygate	\$6.55	\$6.83	\$8.79	\$3.92	\$4.46	\$6.11
Dawn	\$6.84	\$7.12	\$9.12	\$4.24	\$4.74	\$6.41
MichCon Citygate	\$6.77	\$7.02	\$9.02	\$4.09	\$4.54	\$6.29
AECO	\$5.76	\$5.99	\$7.76	\$3.48	\$3.88	\$5.38
Northern Ventura	\$6.31	\$6.62	\$8.28	\$3.86	\$4.38	\$5.89

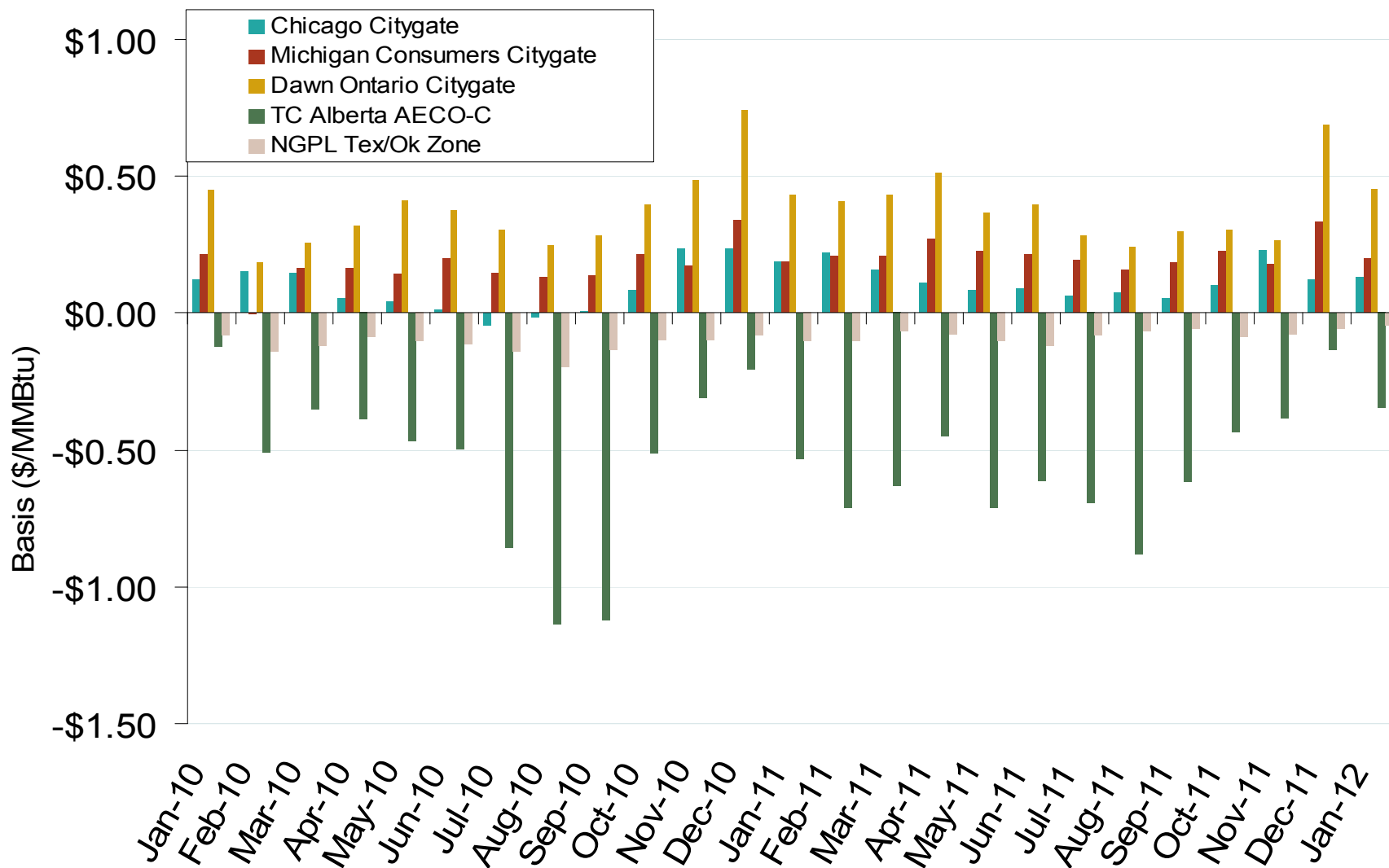
## Midwestern Day-Ahead Hub Spot Prices and Basis



Midwest Natural Gas Market: Average Basis to Henry Hub

Federal Energy Regulatory Commission • Market Oversight • [www.ferc.gov/oversight](http://www.ferc.gov/oversight)

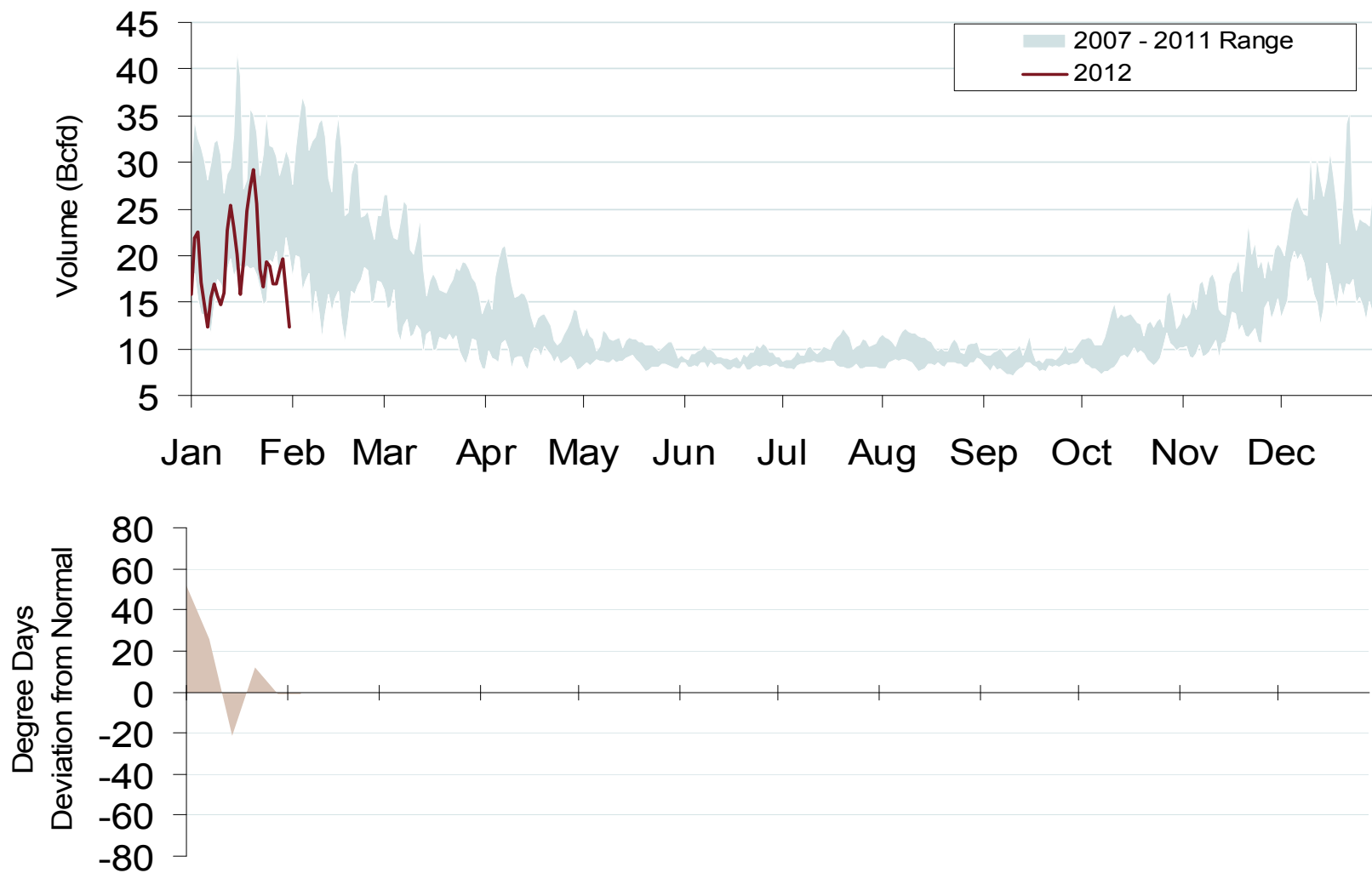
## Midwestern Monthly Average Basis Value to Henry Hub



Source: Derived from Platts data  
February 2012

Updated: February 06, 2012

## Daily Midwest Natural Gas Demand All Sectors



## Midwest Natural Gas Consumption for Power Generation

