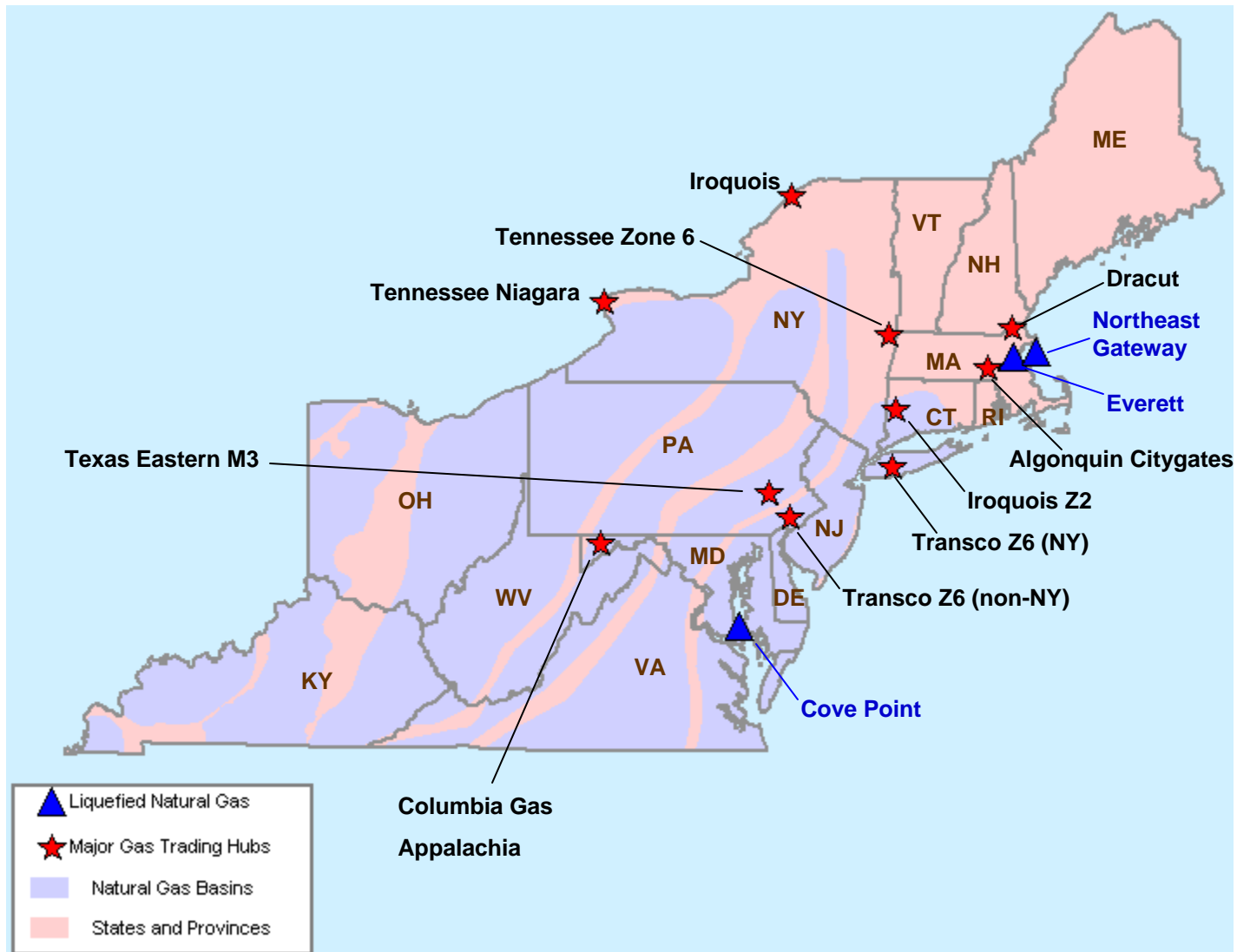


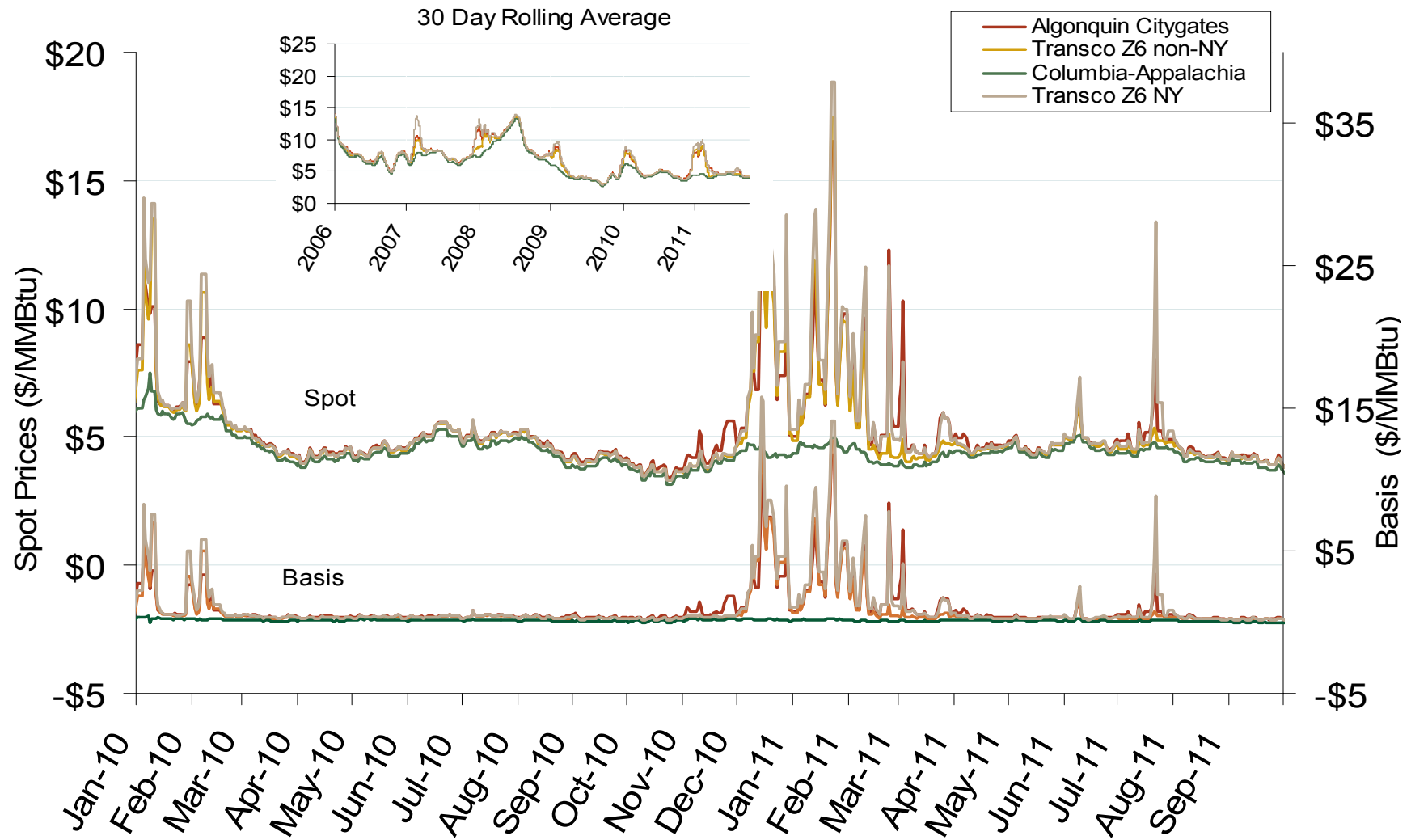
# Northeast Natural Gas Region



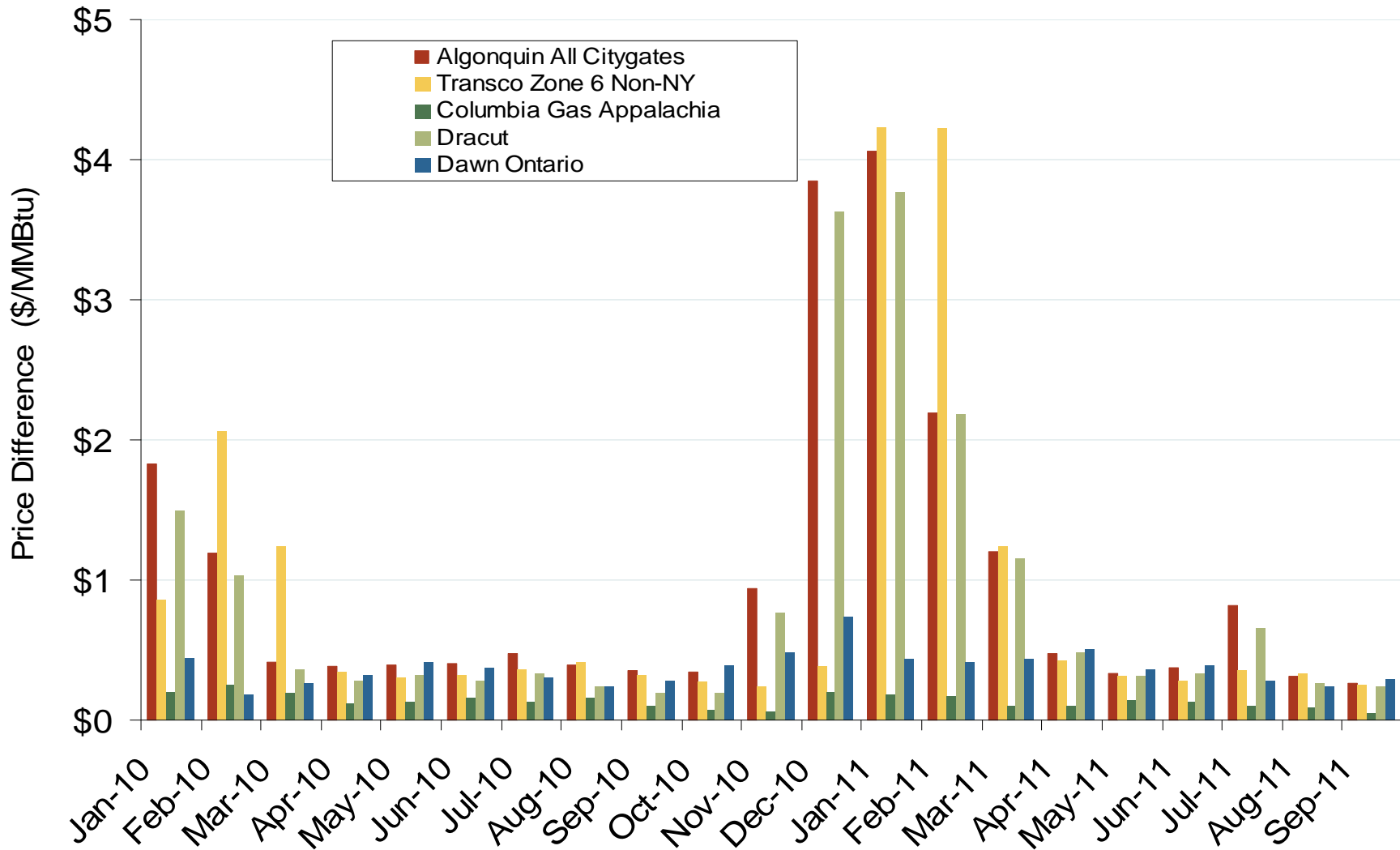
## Northeast Annual Average Spot Hub Prices

Annual Average Day Ahead Prices (\$/MMBtu)						
	2006	2007	2008	2009	2010	5-Year Avg
Algonquin Citygates	\$7.40	\$8.17	\$10.06	\$4.80	\$5.29	\$7.15
Transco Z6 NY	\$7.37	\$8.46	\$10.13	\$4.89	\$5.41	\$7.25
Transco Z6 non-NY	\$7.30	\$7.77	\$9.85	\$4.64	\$5.25	\$6.96
Columbia-Appalachia	\$6.97	\$7.20	\$9.18	\$4.11	\$4.52	\$6.40

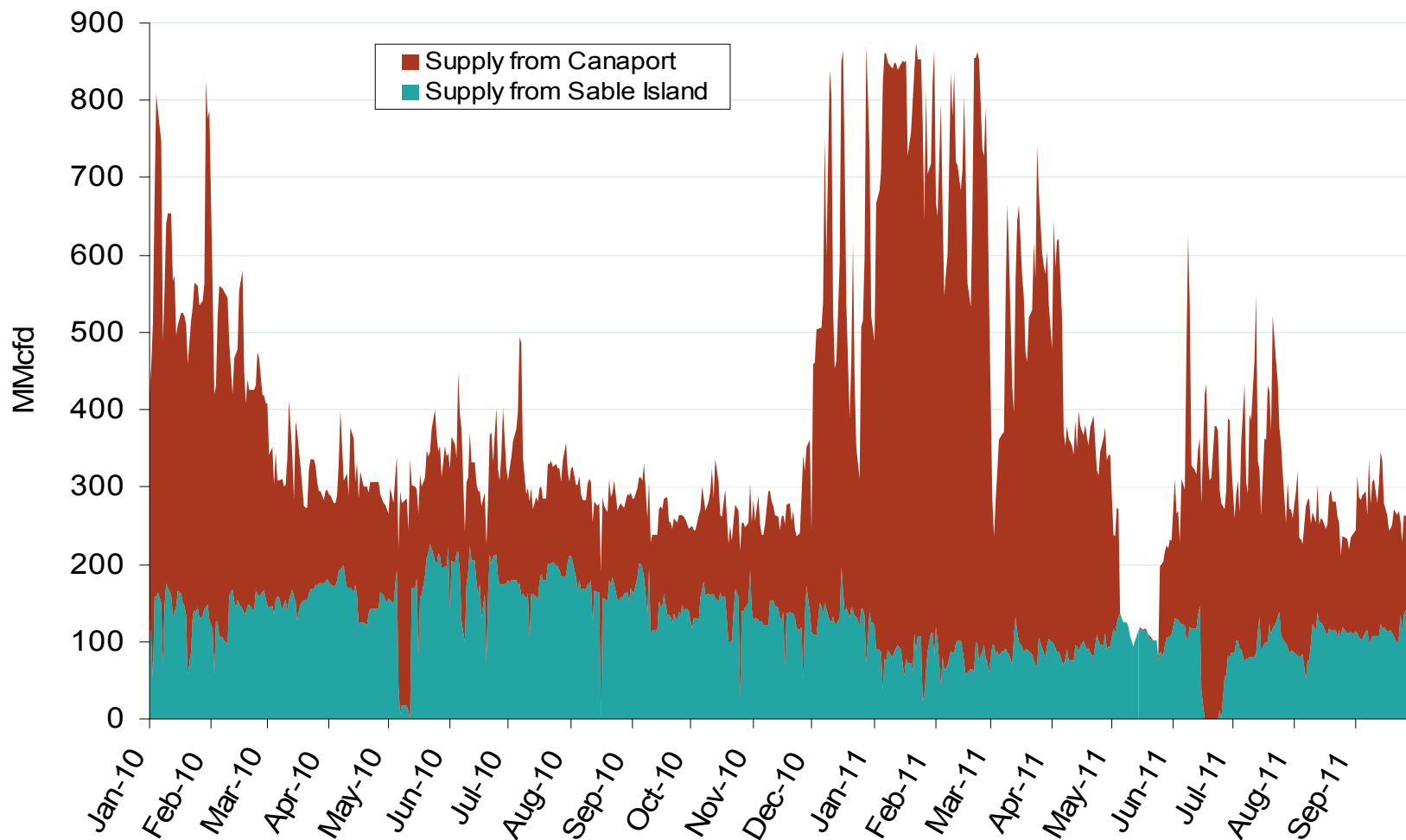
## Northeastern Spot Prices and Basis



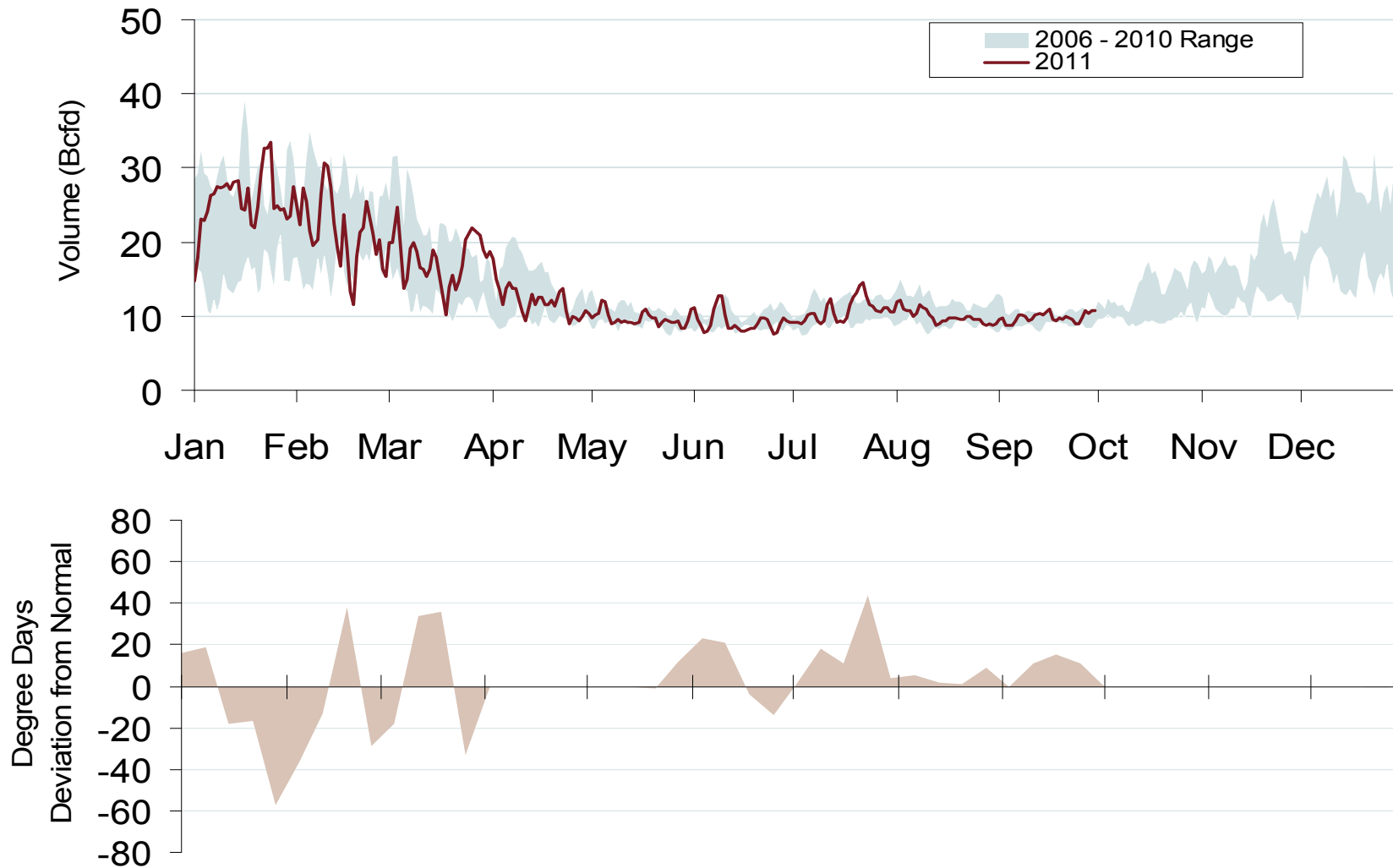
## Northeastern Monthly Average Basis Value to Henry Hub



## Maritimes Pipeline Flows



## Daily Northeast Natural Gas Demand All Sectors



## Northeast Natural Gas Consumption for Power Generation

