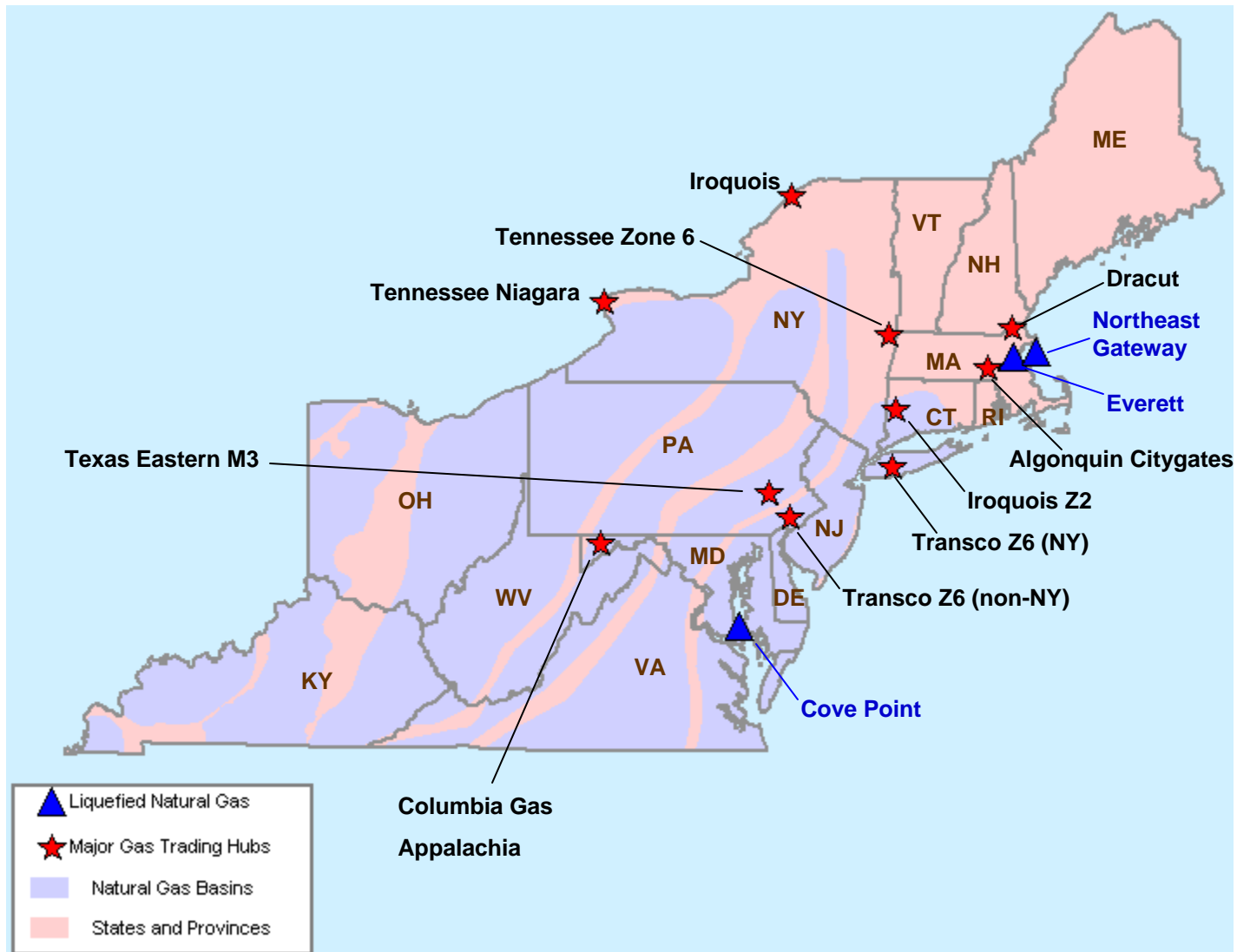


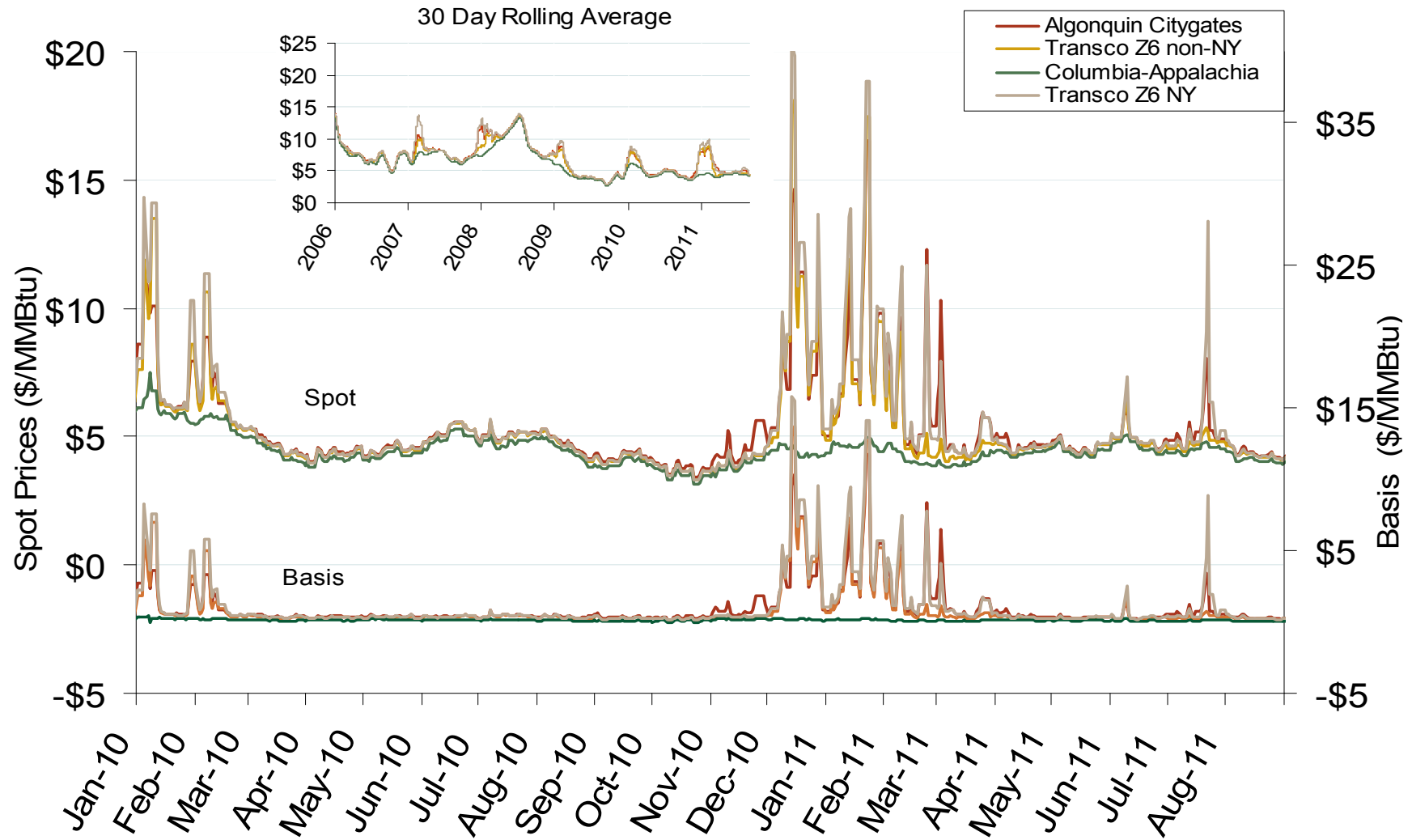
Northeast Natural Gas Region



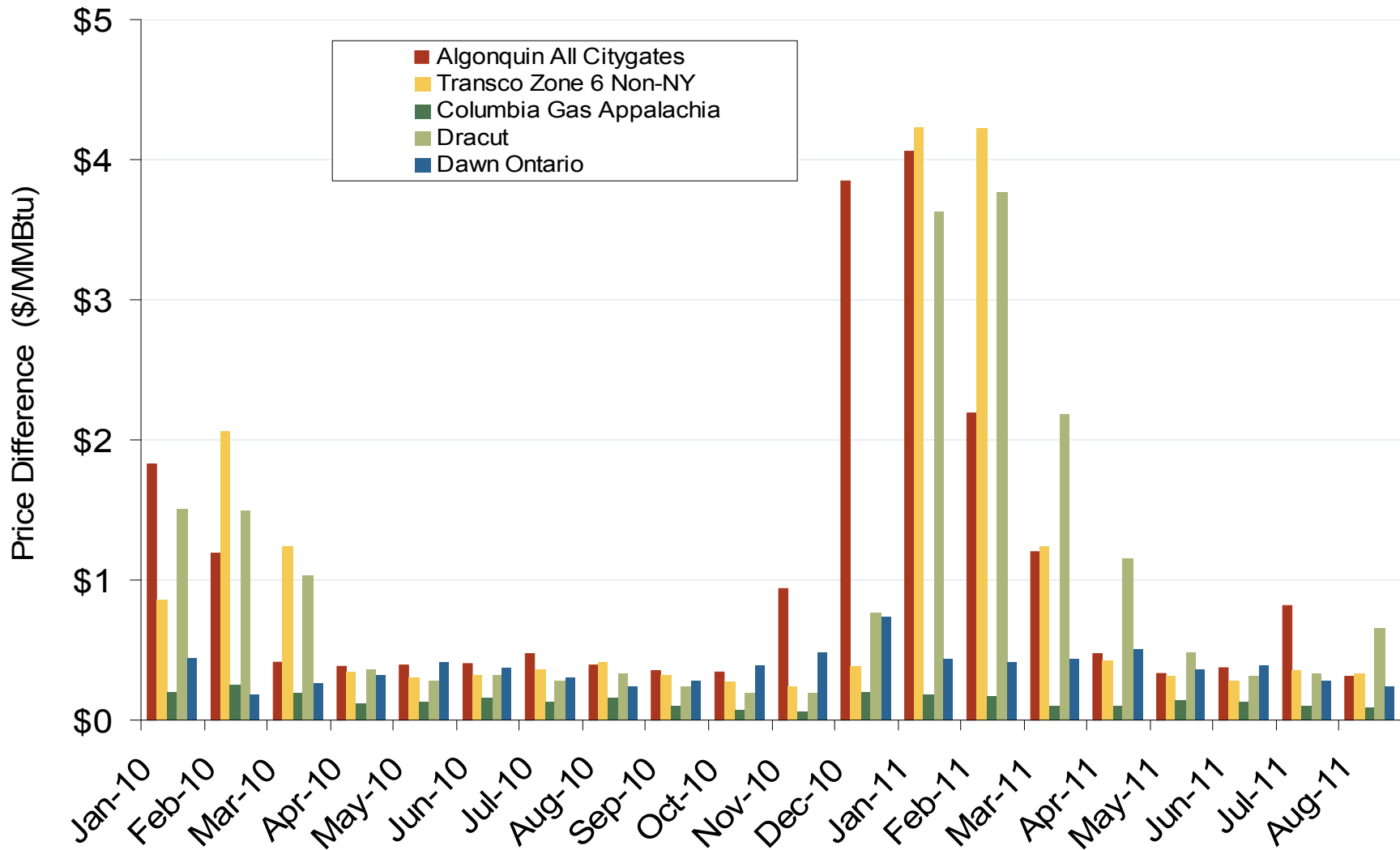
Northeast Annual Average Spot Hub Prices

| Annual Average Day Ahead Prices (\$/MMBtu) | | | | | | |
|--|--------|--------|---------|--------|--------|------------|
| | 2006 | 2007 | 2008 | 2009 | 2010 | 5-Year Avg |
| Algonquin Citygates | \$7.40 | \$8.17 | \$10.06 | \$4.80 | \$5.29 | \$7.15 |
| Transco Z6 NY | \$7.37 | \$8.46 | \$10.13 | \$4.89 | \$5.41 | \$7.25 |
| Transco Z6 non-NY | \$7.30 | \$7.77 | \$9.85 | \$4.64 | \$5.25 | \$6.96 |
| Columbia-Appalachia | \$6.97 | \$7.20 | \$9.18 | \$4.11 | \$4.52 | \$6.40 |

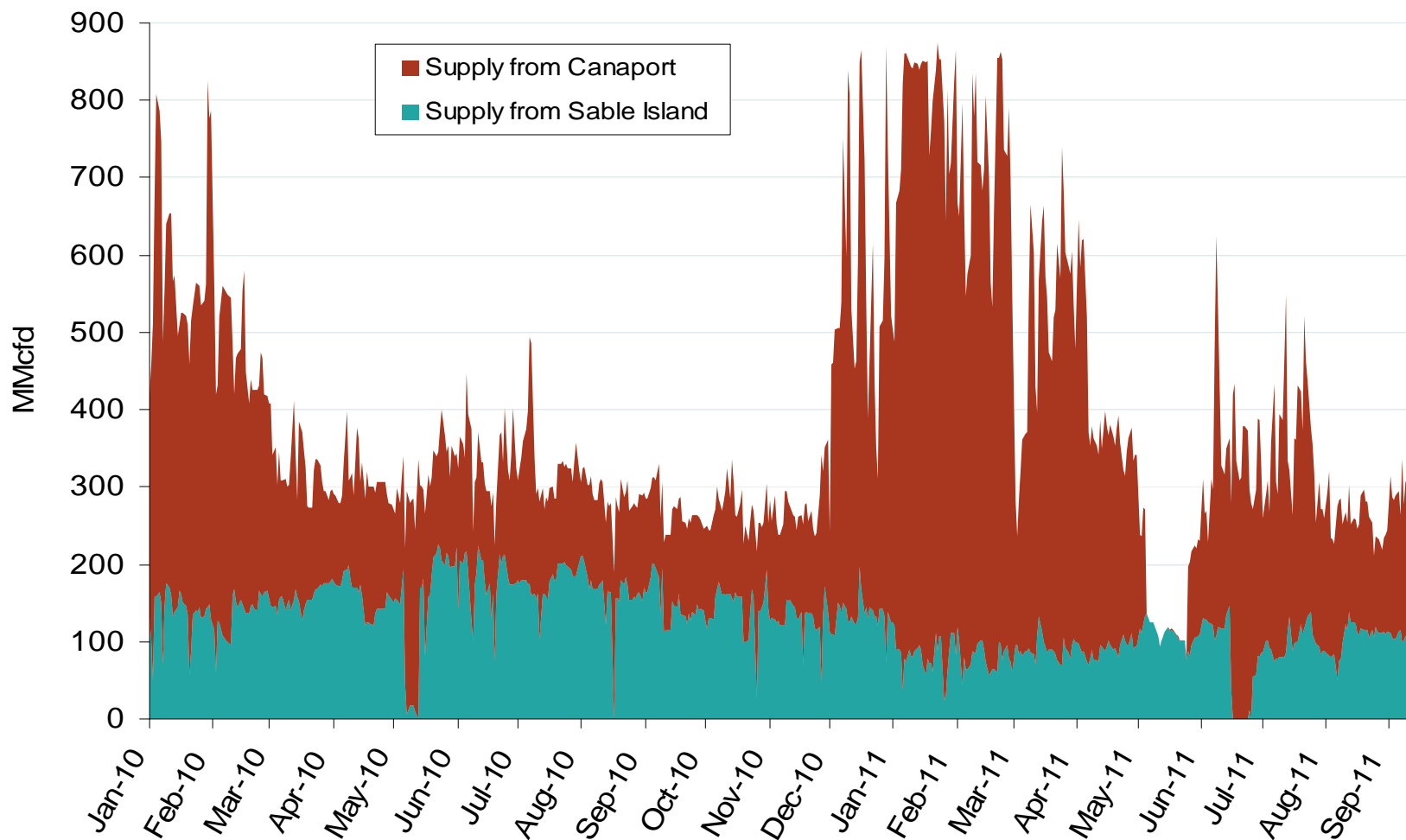
Northeastern Spot Prices and Basis



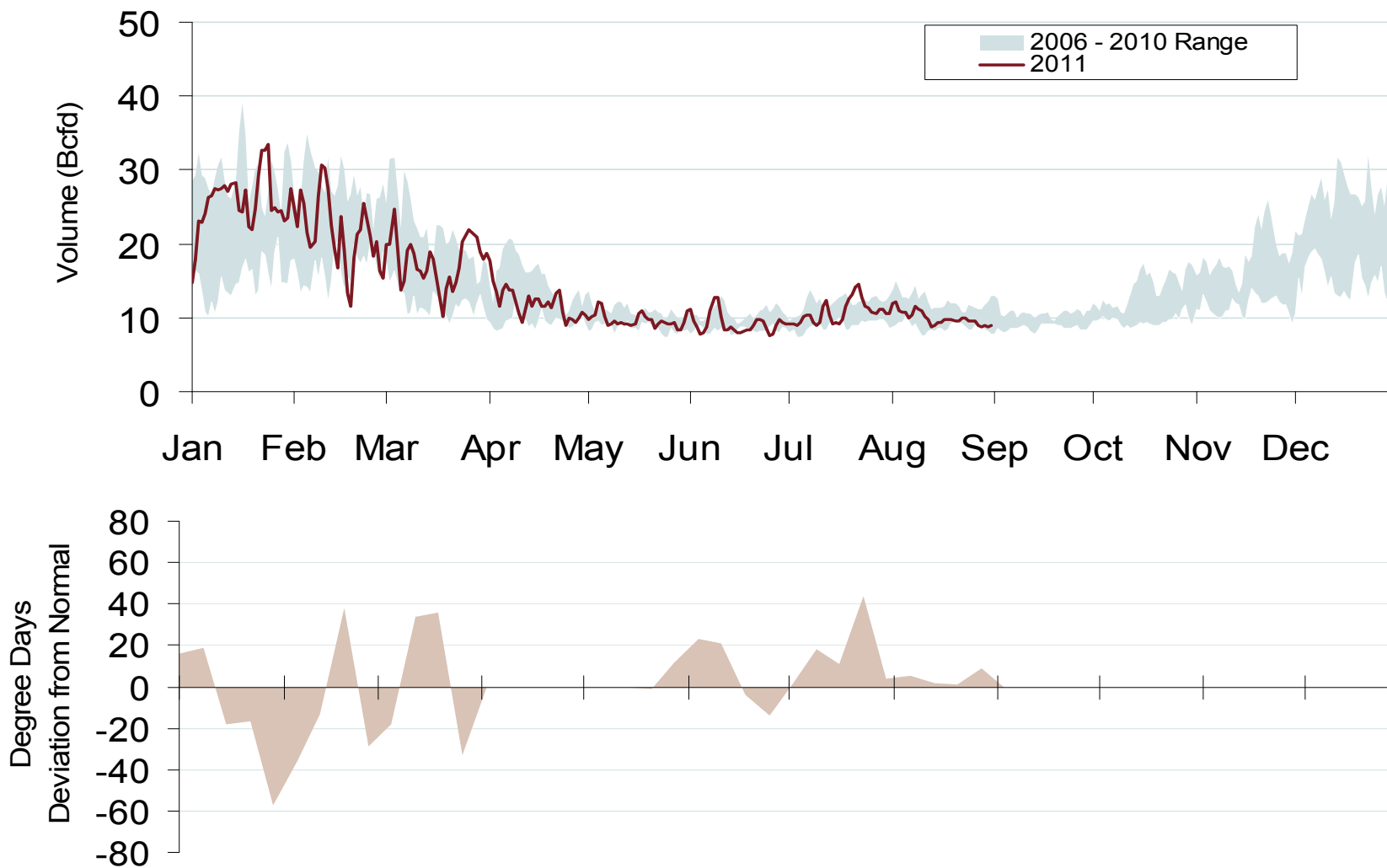
Northeastern Monthly Average Basis Value to Henry Hub



Maritimes Pipeline Flows



Daily Northeast Natural Gas Demand All Sectors



Northeast Natural Gas Consumption for Power Generation

