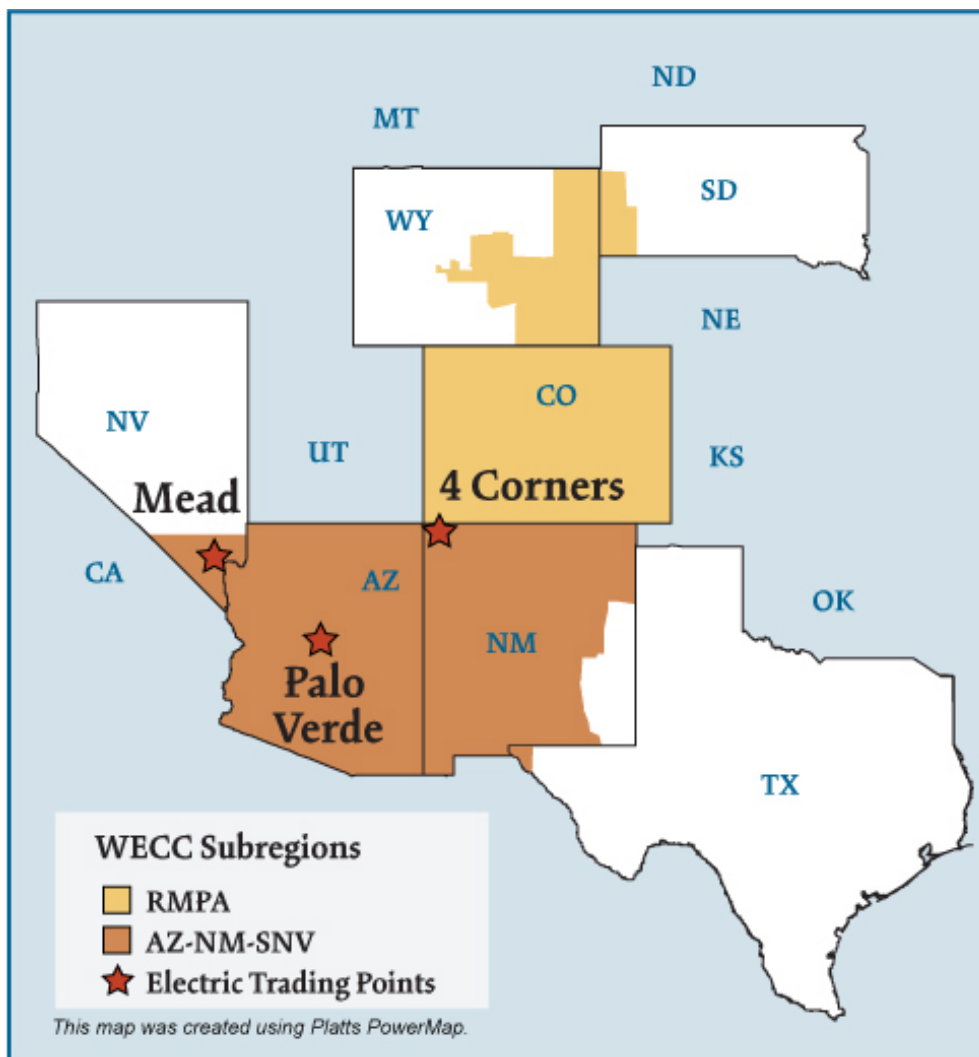


Southwest Electric Regions



Overview

Geography

States covered: All or most of Arizona, New Mexico, Colorado and parts of Nevada, Wyoming and South Dakota.

Reliability region: Rocky Mountain Power Area (RMPA) and Arizona/New Mexico/Southern Nevada Power Area (AZNMSNV) sub-regions of the Western Electric Coordinating Council (WECC)

Balancing authorities: See list on page 5.

Hubs: Four Corners, Mead, Palo Verde

RTO/ISO

None

Generation/Supply

Marginal fuel type: Natural gas

Generating capacity: 45,459 MW (2005)

Capacity reserve: 8,940 MW (2005)

Reserve margin: 24% (2005)

The region has a surplus of generating capacity, with much of the generation in Arizona and the Four Corners area. Transmission capacity to the California market is often fully utilized in the high load periods of the summer. In 2005, the regional reserve margin decreased from 2004 as demand growth outpaced supply additions.

Demand

Peak demand: 36,519 MW (2005)

Peak demand growth: 3.5% (2004–2005)

Prices

Annual Average of Daily Bilateral Day Ahead On-Peak Prices

Platts "Palo Verde" Index

2004: \$50.09/MWh

2005: \$67.39/MWh

2006: \$57.59/MWh

2007: \$61.74/MWh

Interconnections/Seams

Generation suppliers export excess power to the rest of the West and particularly to California.

Balancing Authorities in the Southwest Electric Market

WECC Subregion and Balancing Authority

NERC Acronym

AZNMSNV

Arizona Public Service Company
 DECA, LLC - Arlington Valley
 El Paso Electric Company
 Gila River Maricopa Arizona
 Harquahala L.L.C.
 Imperial Irrigation District
 Nevada Power Company
 Public Service Company of New Mexico
 Salt River Project
 Tucson Electric Power Company
 Western Area Power Administration - Lower Colorado

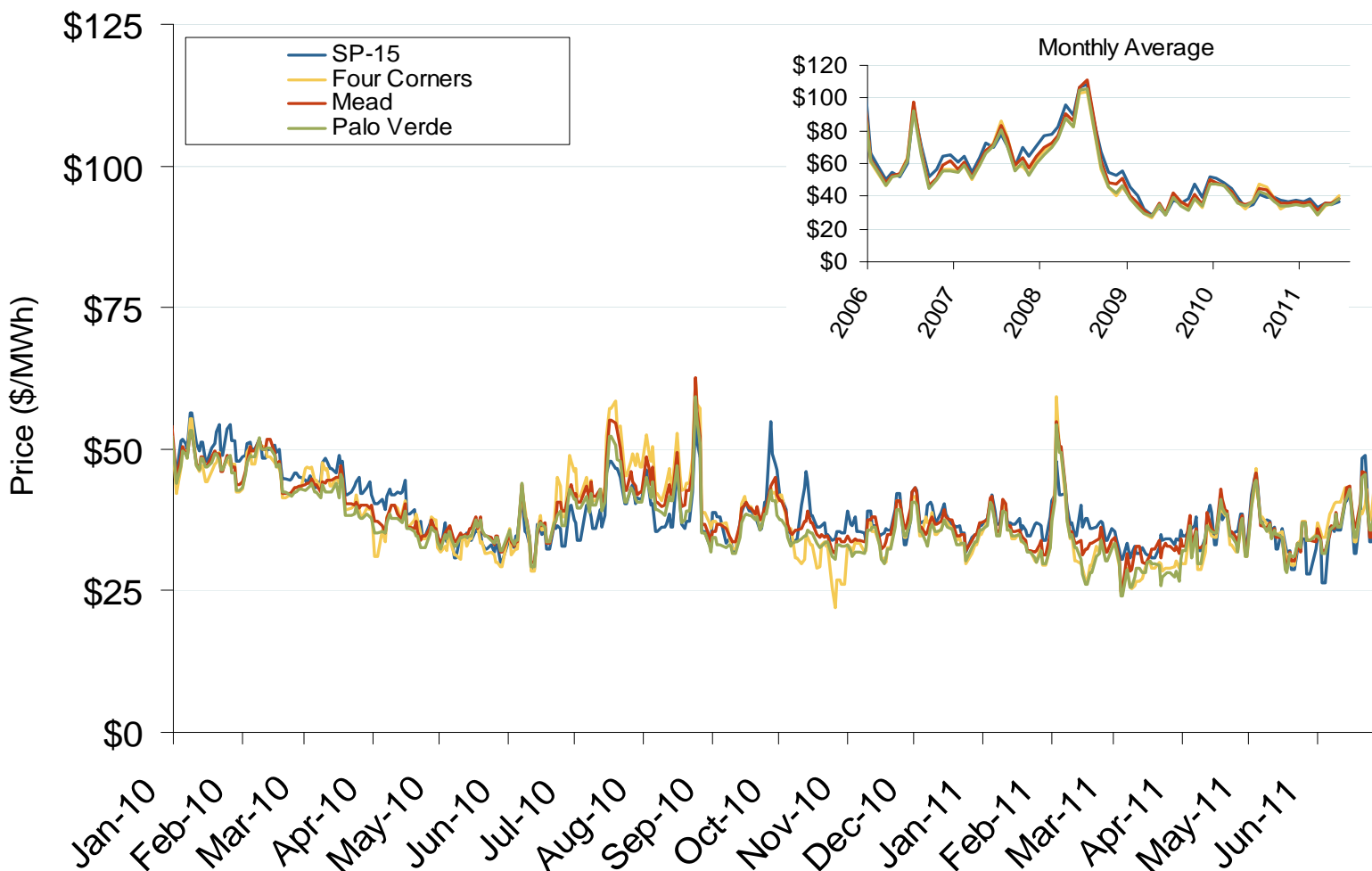
AZPS
 DEAA
 EPE
 GRMA
 HGMA
 IID
 NEVP
 PNM
 SRP
 TEPC
 WALC

RMPA

Public Service Company of Colorado
 Western Area Power Administration - Colorado-Missouri

PSCO
 WACM

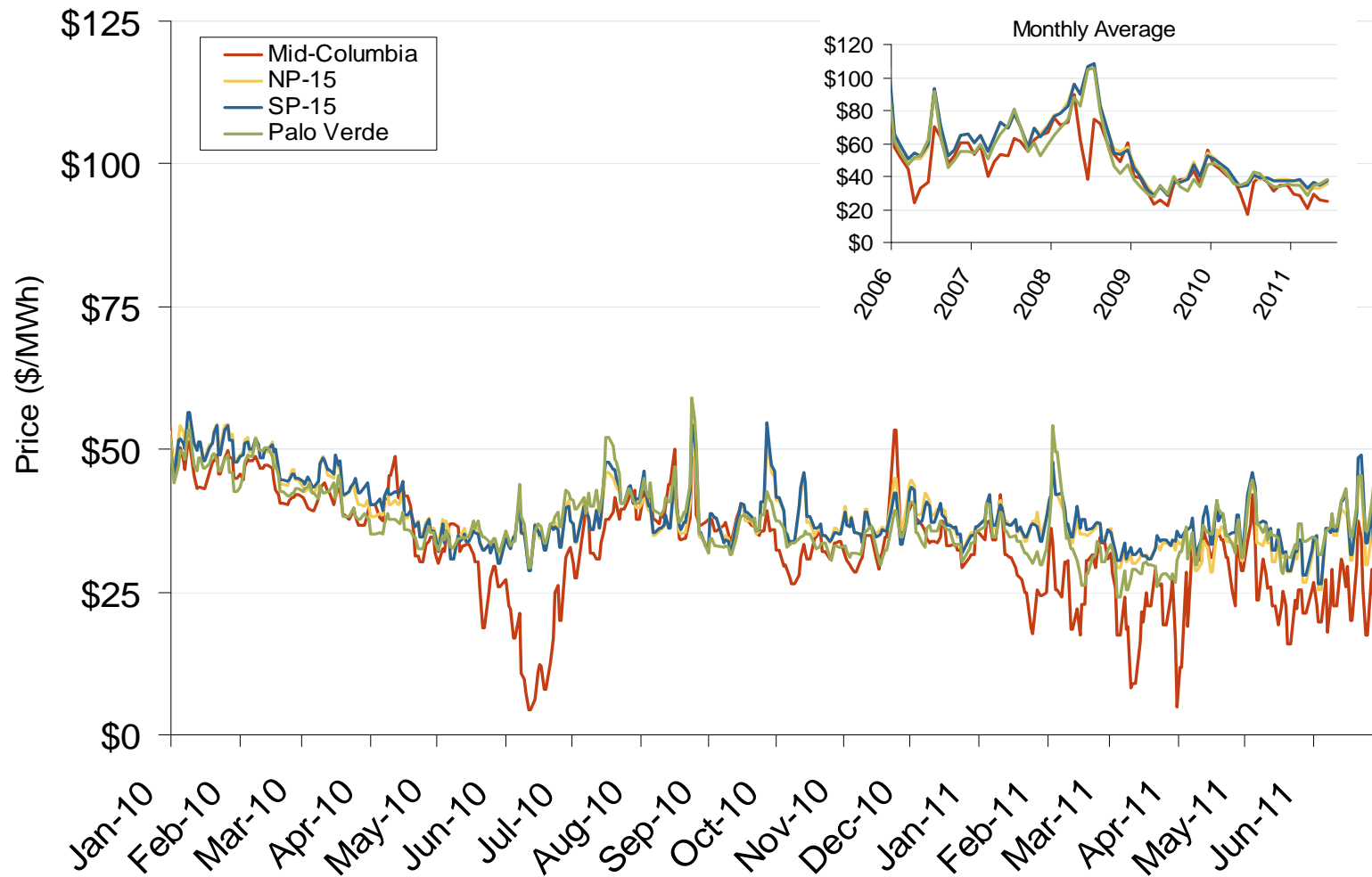
Southwestern Daily Bilateral Day-Ahead On-Peak Prices



Source: Derived from *Platts* data.

Updated: July 08, 2011

Western Daily Bilateral Day-Ahead On-Peak Prices



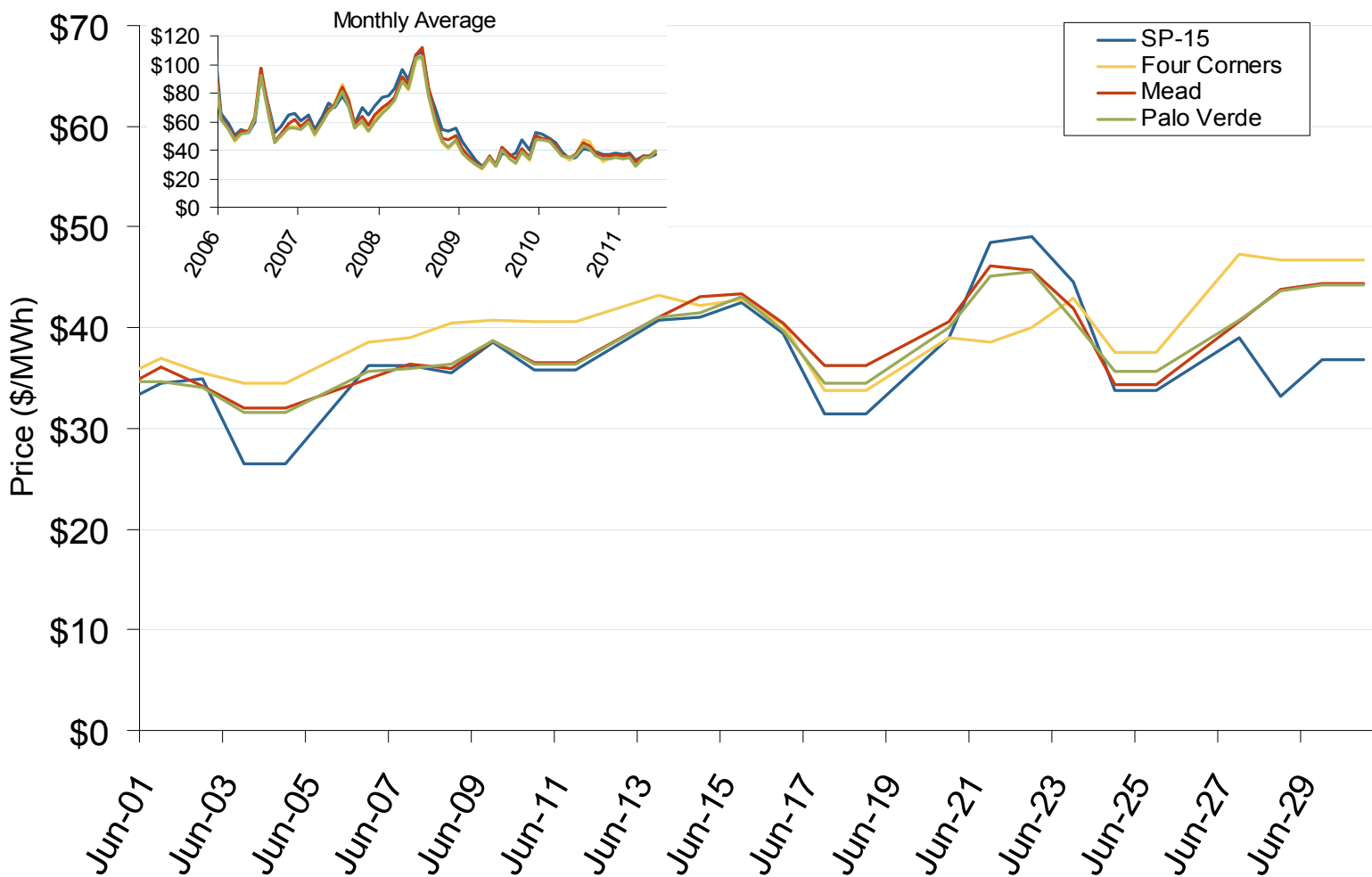
Source: Derived from *Platts* data.

Updated: July 08, 2011

Southwest Electric Market: Last Month's Southwestern Bilateral Prices

Federal Energy Regulatory Commission • Market Oversight • www.ferc.gov/oversight

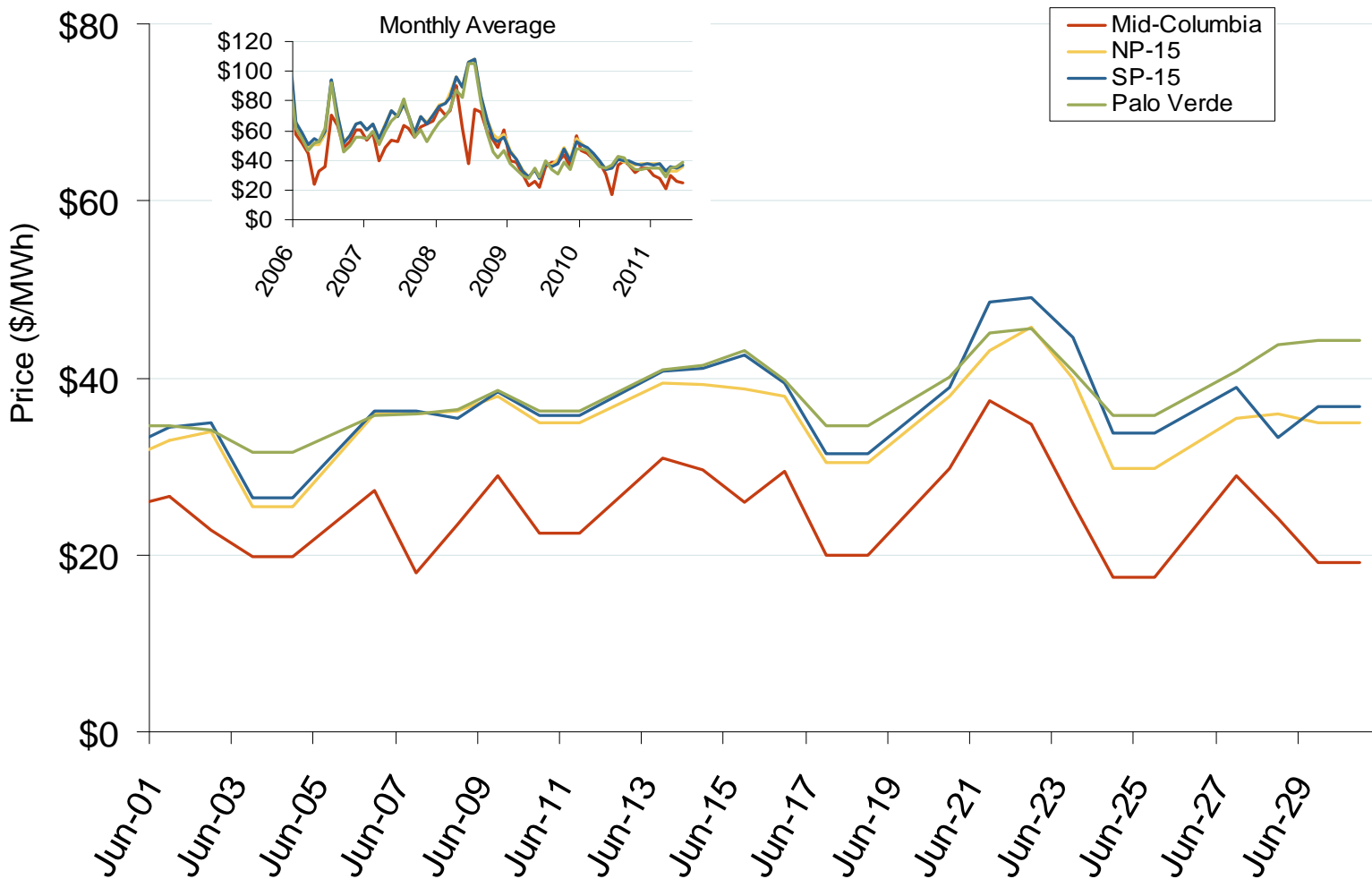
Southwestern Daily Bilateral Day-Ahead On-Peak Prices



Source: Derived from *Platts* data.

Updated: July 08, 2011

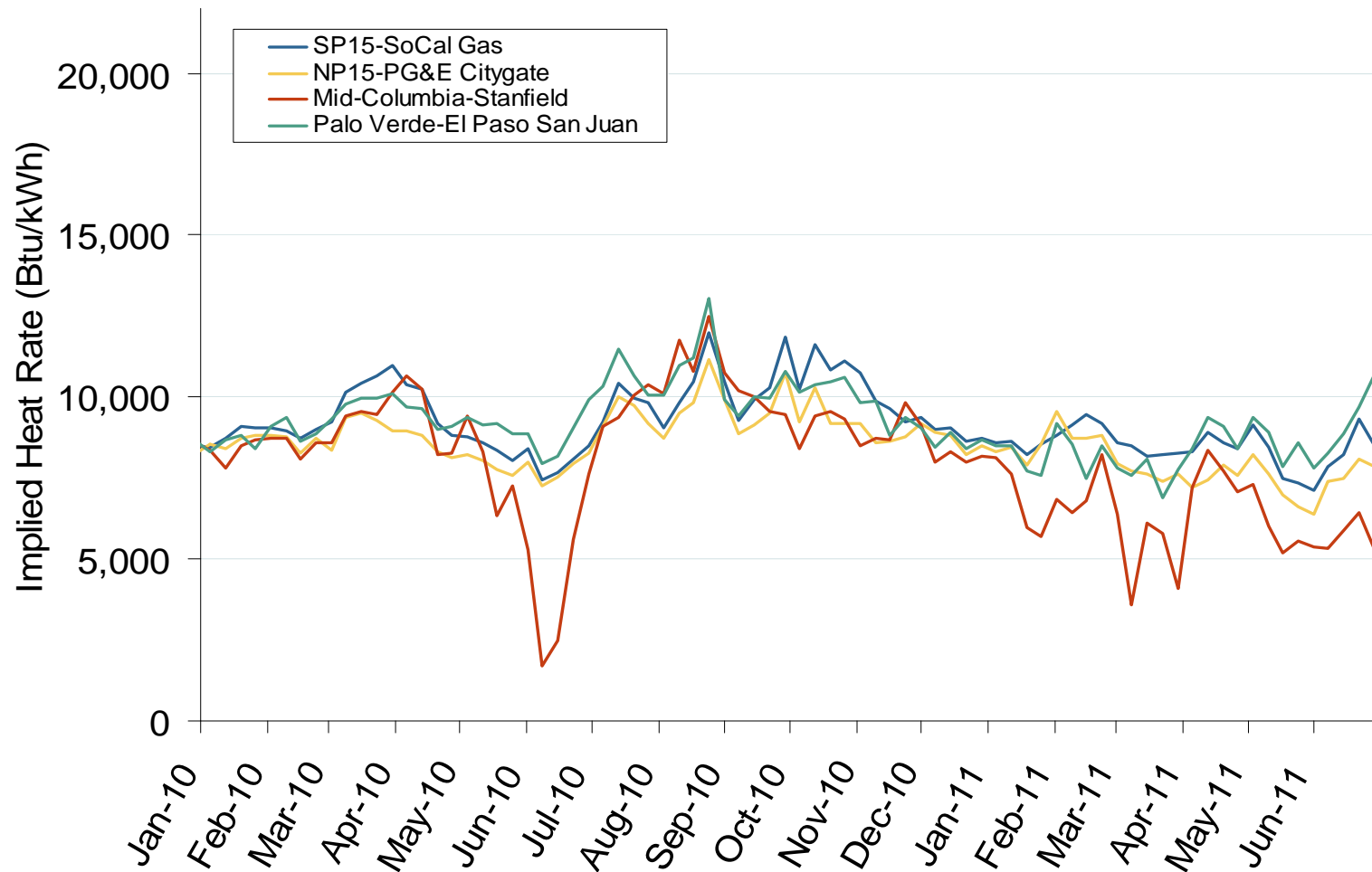
Western Daily Bilateral Day-Ahead On-Peak Prices



Source: Derived from *Platts* data.

Updated: July 08, 2011

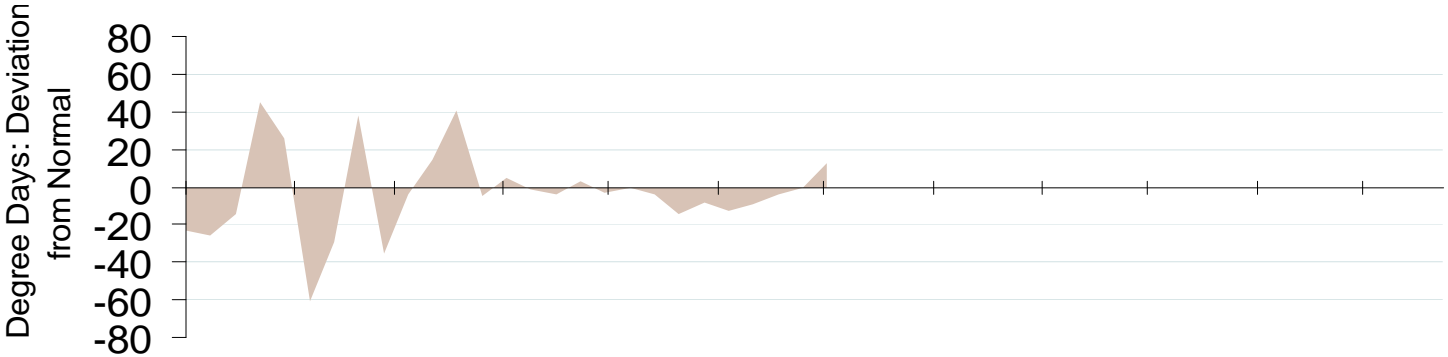
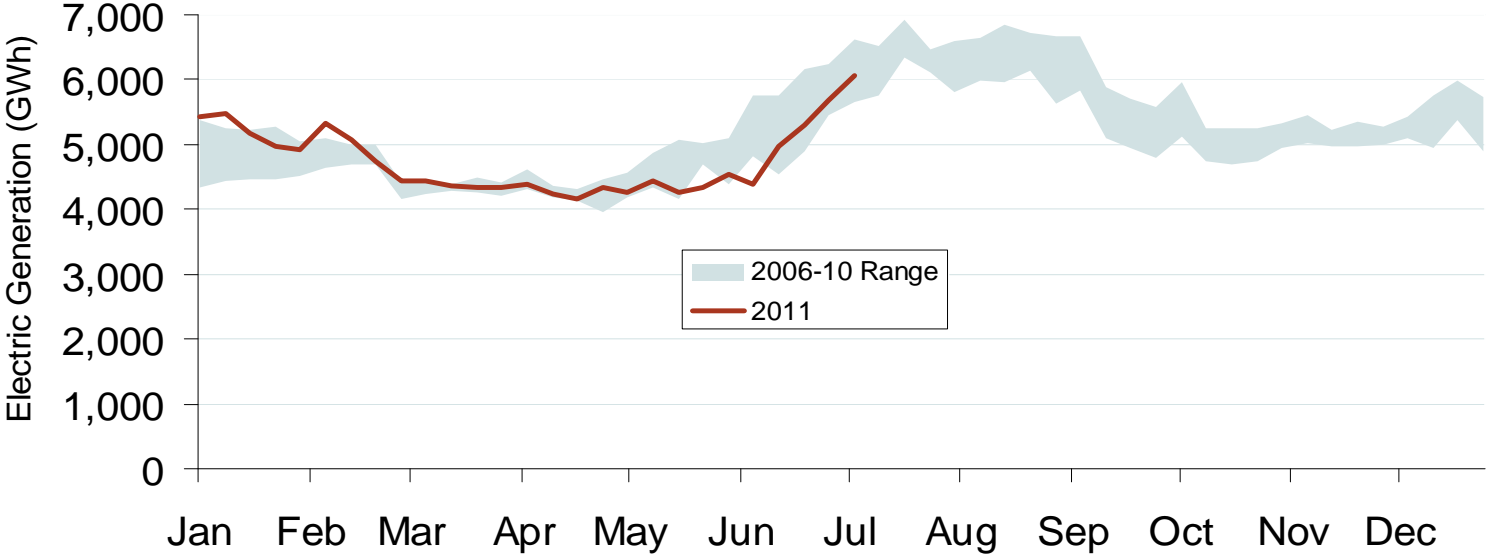
Implied Heat Rates at Western Trading Points Weekly Average



Source: Derived from *Platts* on-peak electric and natural gas price data.

Updated: July 08, 2011

Weekly Electric Generation Output and Temperatures Rocky Mountains Region



Source: Derived from EEI and NOAA data.

Updated: July 08, 2011