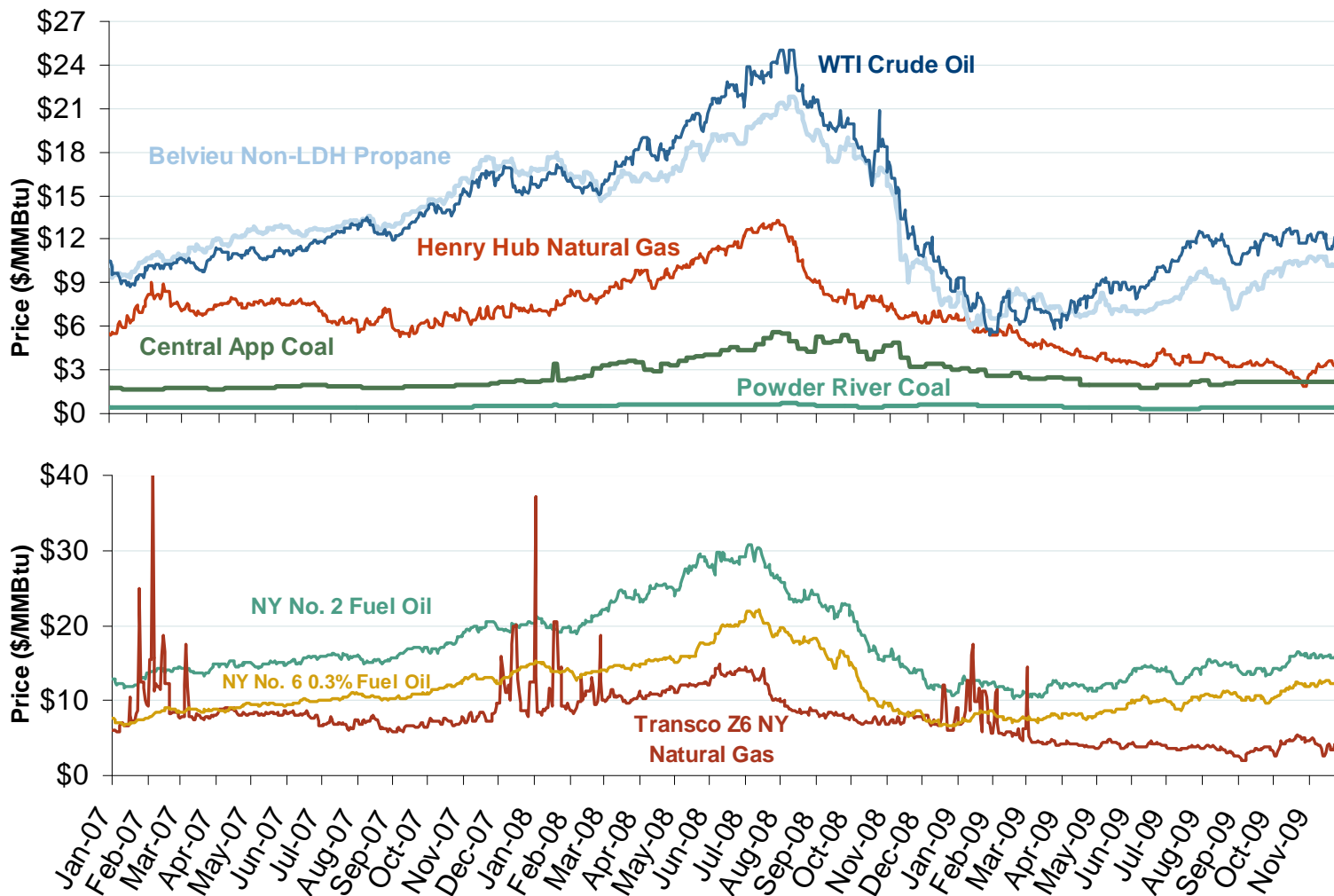


Oil, Coal, Natural Gas and Propane Daily Spot Prices



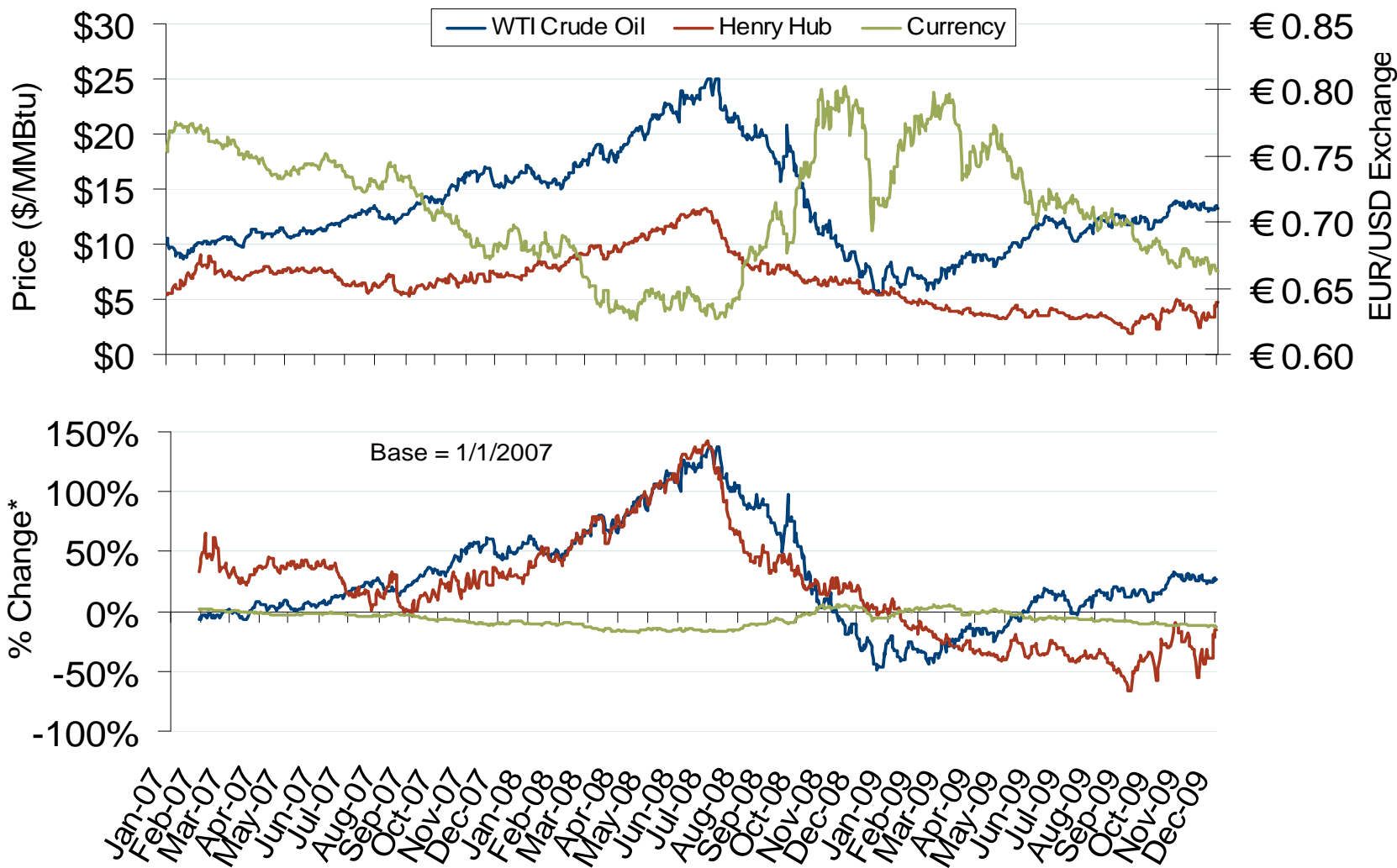
Source: Derived from ICE and Bloomberg data.

Note: Coal prices are quoted in \$/ton. Conversion factors to \$/MMBtu are based on contract specifications of 12,000 btus/pound for Central Appalachian coal and 8800 btus/pound for Powder River Basin coal.

Updated December 8, 2009

3001

Oil, Natural Gas and Currency Spot Prices

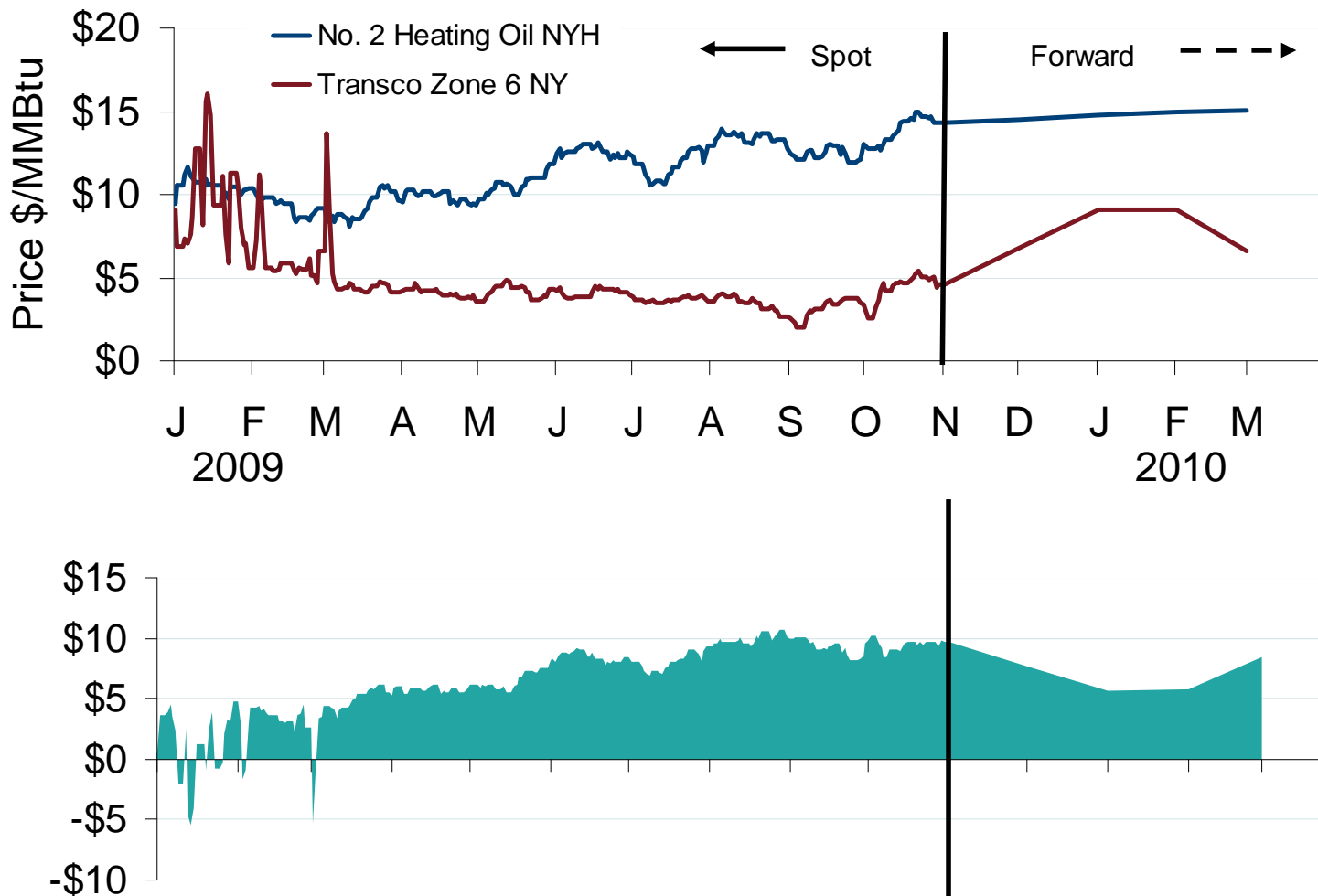


Source: Derived from *Bloomberg* data.

Updated December 8, 2009

3009

Northeast Heating Oil vs. Natural Gas Spread



Source: Derived from ICE & NYMEX Clearport

Updated November 6, 2009

32000