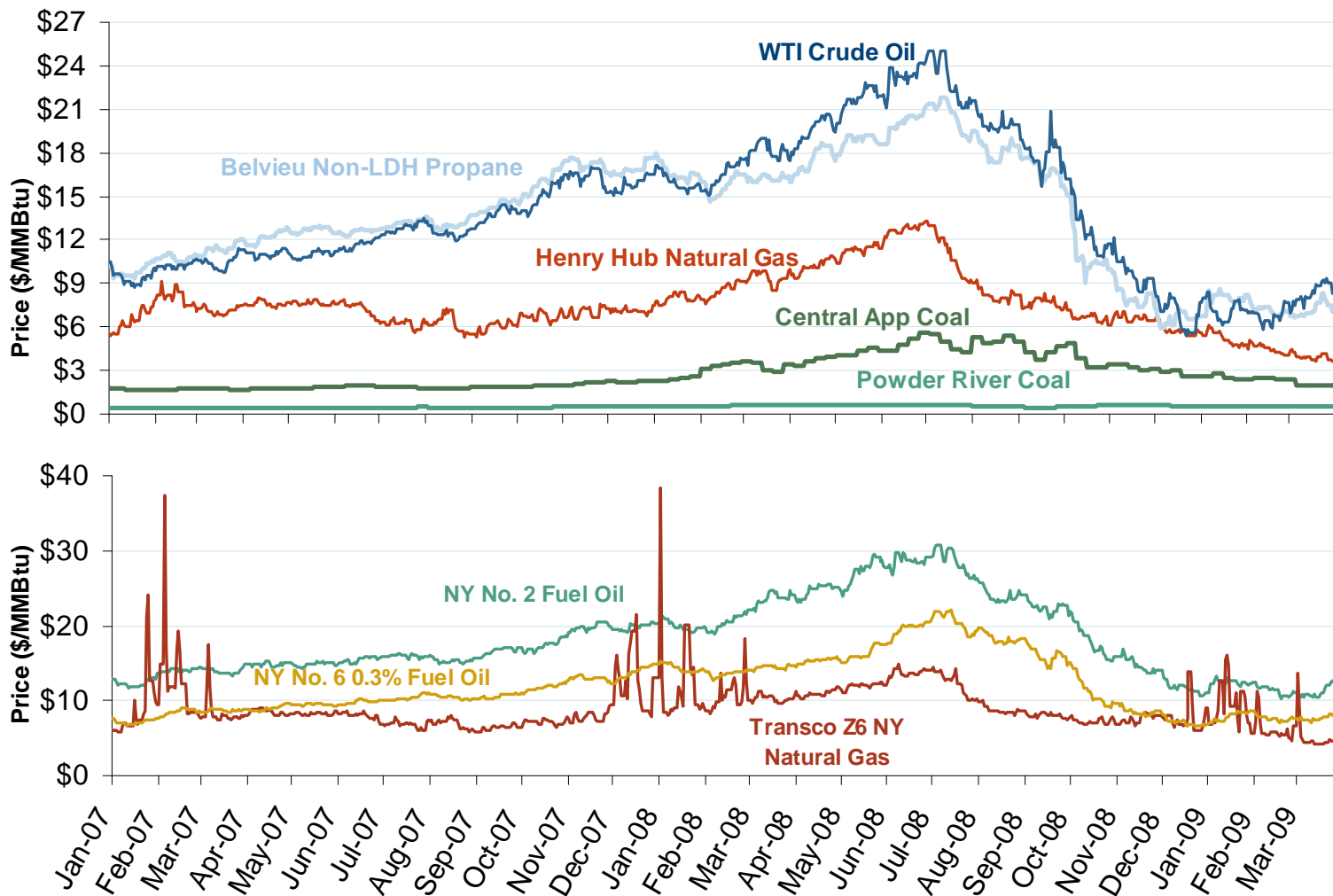


# Oil, Coal, Natural Gas and Propane Daily Spot Prices

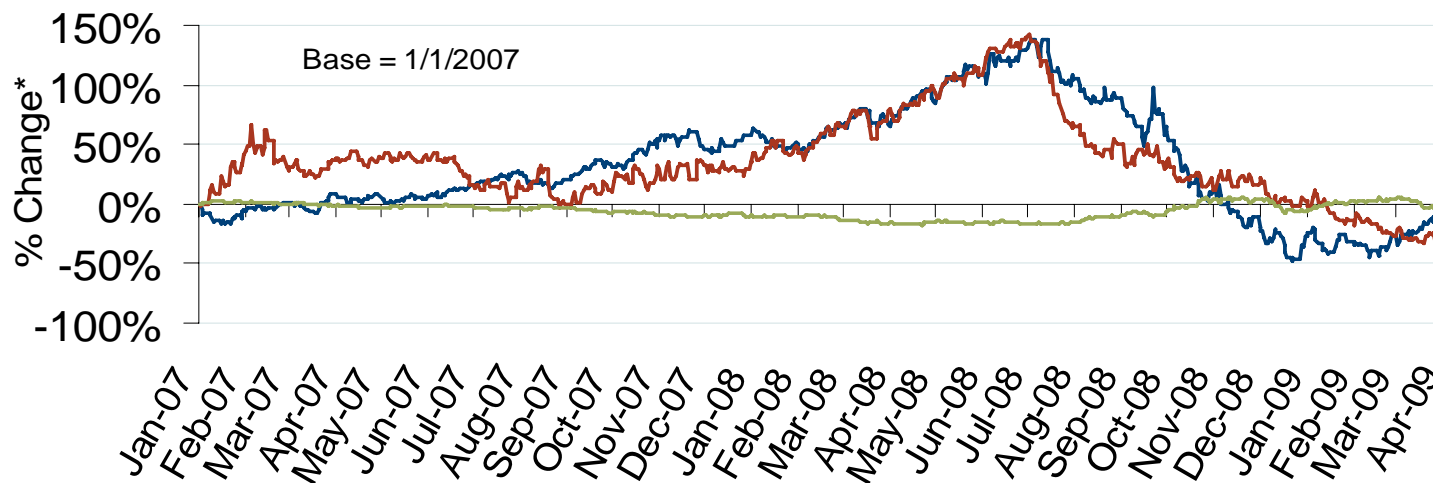
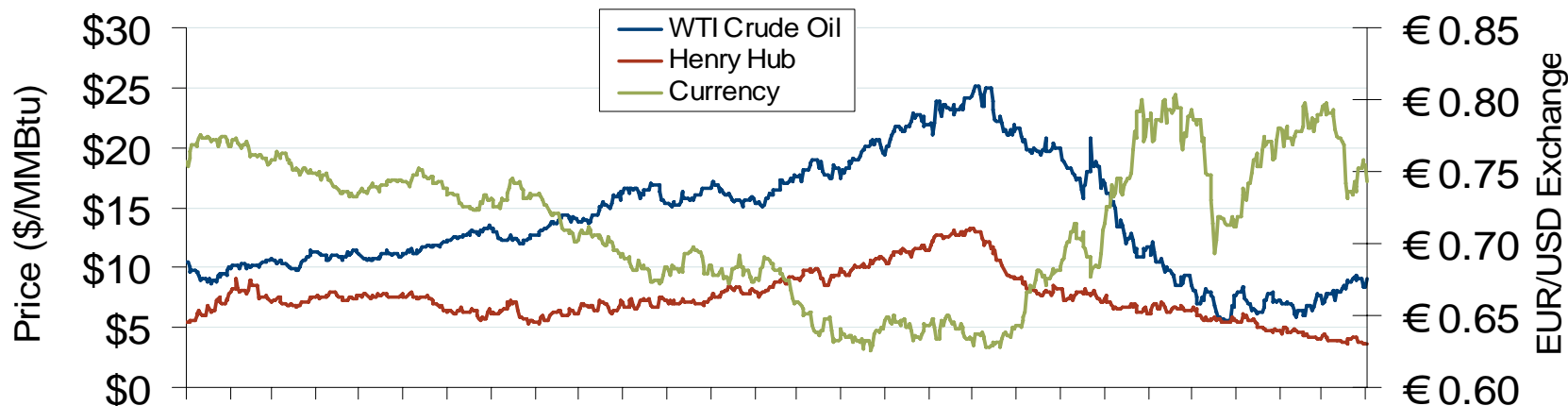


Source: Derived from ICE and Bloomberg data.

Note: Coal prices are quoted in \$/ton. Conversion factors to \$/MMBtu are based on contract specifications of 12,000 btus/pound for Central Appalachian coal and 8800 btus/pound for Powder River Basin coal.

Updated April 7, 2009

## Oil, Natural Gas and Currency Spot Prices



Source: Derived from *Bloomberg* data.

Updated April 7, 2009

3009