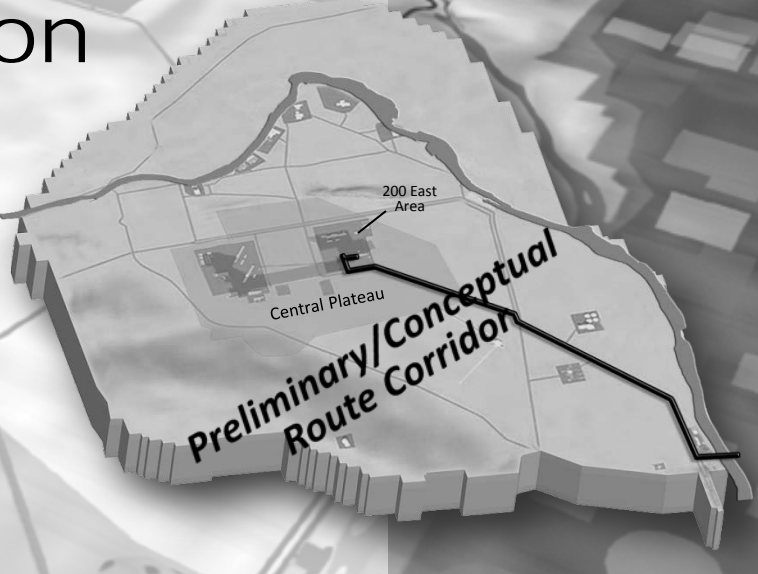




Environmental Impact Statement for Acquisition of a Natural Gas Pipeline and Natural Gas Utility Service



The U.S. Department of Energy (DOE) has issued a Notice of Intent to prepare an environmental impact statement (EIS) for the acquisition of a natural gas pipeline and natural gas utility service. DOE is proposing to enter into a contract with a licensed natural gas utility supplier to provide natural gas to support facilities in the Hanford Site's Central Plateau located in the center of the site. The EIS will evaluate potential environmental impacts of constructing, operating, and maintaining an approximately 30-mile pipeline from an existing gas transmission line near the Tri-Cities Airport in Pasco, Wash., to the 200 East Area on the Hanford Site.

Background

Situated along the Columbia River in southeastern Washington, DOE's 586-square-mile Hanford Site is undergoing extensive efforts to clean up contamination resulting from past nuclear defense research and development activities dating back to World War II. To this end, DOE is constructing the Waste Treatment Plant (WTP) on the Site's 200 East Area. Once operational, the WTP will treat radioactive waste stored in underground tanks on the Central Plateau to prepare the waste for disposal. The nearby 242-A Evaporator will support WTP operations by receiving, processing and reducing the volume of these liquid wastes prior to treating them at the WTP.

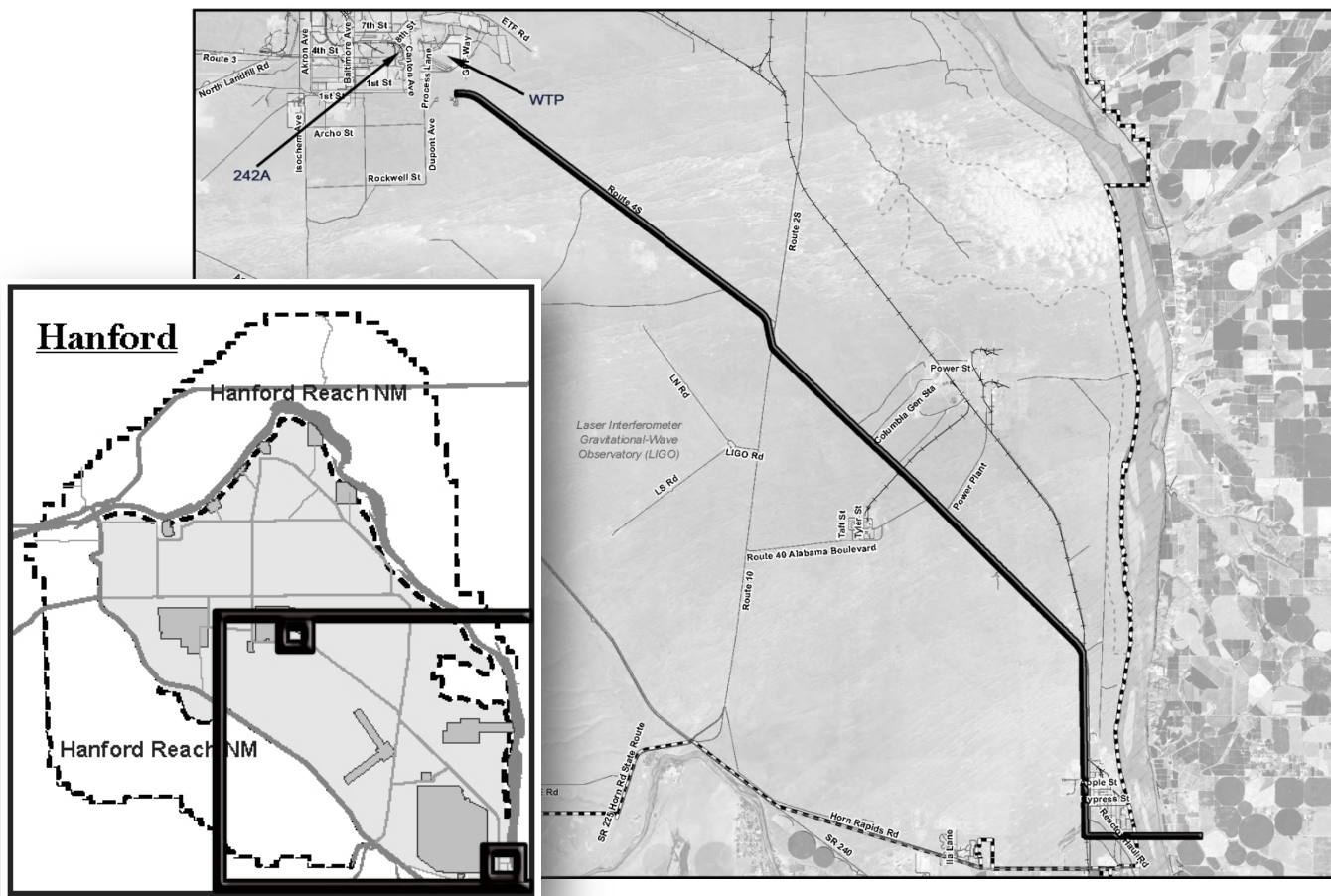
The 242-A Evaporator currently uses steam from boilers fueled by diesel, and the WTP is expected to use steam from boilers fueled by diesel. DOE has identified a number of potential advantages, including substantial cost savings, of replacing the use of diesel fuel with natural gas, supplementing with diesel fuel as necessary.

Why is DOE proposing to make natural gas available to the Hanford Site Central Plateau?

Using natural gas instead of fuel oil for facilities located on the Central Plateau of the Hanford Site would support federal government goals to increase energy sustainability and efficiency and reduce greenhouse gas emissions. Projected benefits include:

- Eliminating approximately one million metric tons of future greenhouse gas emissions.
- Avoiding wear-and-tear on roads from the delivery of ~6 tanker trucks of diesel per day, 365 days per year for 25 years to support the Waste Treatment Plant.
- Saving several hundred million dollars in WTP lifetime operating costs.

Preliminary/Conceptual Route Corridor



Construction of a proposed natural gas pipeline would originate at a new interconnect tap on the existing Williams Northwest Pipe transmission line in Franklin County, north of the Tri-Cities Airport in Pasco, Wash. The pipeline would run west across non-DOE lands about 8.5 miles and under the Columbia River onto the Hanford Site under the 300 Area. The pipeline would then turn northwest and parallel Route 45 for about 20 miles, terminating at facilities in the 200 East Area of the Central Plateau. The estimated length of the proposed pipeline is approximately 30 miles.

Environmental Impact Statement (EIS) Public Scoping Period

The DOE is asking for public comment on the proposed scope of the Natural Gas Pipeline EIS, including the alternatives and environmental issues to be evaluated. To facilitate dialogue between DOE and the public and provide an opportunity for individuals to provide written or oral statements, DOE is holding this public scoping meeting and will accept comments during the scoping period through February 22, 2012. DOE will consider any comments received after that date to the extent practicable.

Please submit comments in writing to:

Douglas H. Chapin

NEPA Document Manager

U.S. Department of Energy

P.O. Box 550, MSIN A5-11

Richland, Washington 99352

or by email: naturalgaseis@rl.gov

The Notice of Intent and information about the 30-day public scoping period can be found at

<http://www.hanford.gov/page.cfm/EnvironmentalImpactStatements>