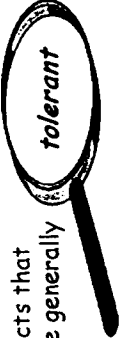
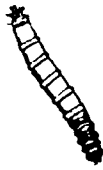


Aquatic insects that are generally



tolerant to water pollution.

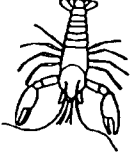
Canefly Nymphs



Damselfly Nymphs



Crayfish



Midge



Dragonfly Nymph



Sideswimmer



Leech



Snail



Aquatic Worms



Mosquito Larva



Bivalves



Aquatic insects that are generally

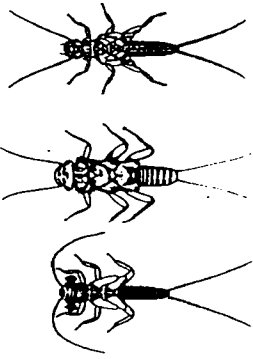


intolerant to water pollution.

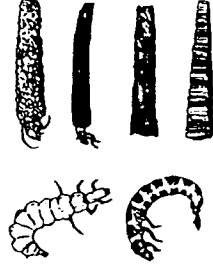
Mayfly Nymphs



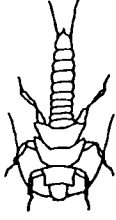
Stonefly Nymph



Caddisfly Larvae



Salmonfly Nymph



Dobsonfly Larva



Riffle Beetle



Penny Beetle Larva



WE CAN TELL HOW HEALTHY A STREAM HAS BEEN OVER TIME BY STUDYING THE DIVERSITY OF ORGANISMS THAT LIVE IN IT.