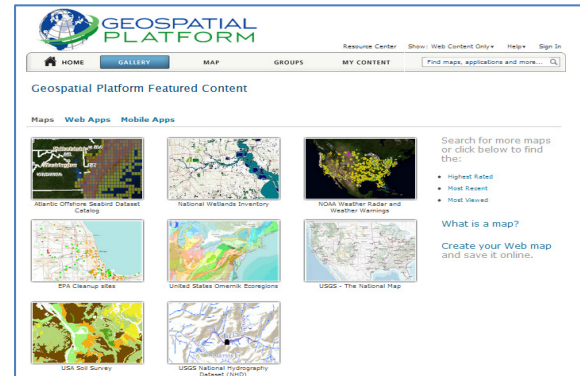


## How to Use [www.GeoPlatform.gov](http://www.GeoPlatform.gov)

The Geospatial Platform's new website lets you create, save and share maps online. You can combine your own data layers with trusted federal datasets.

### Map Gallery

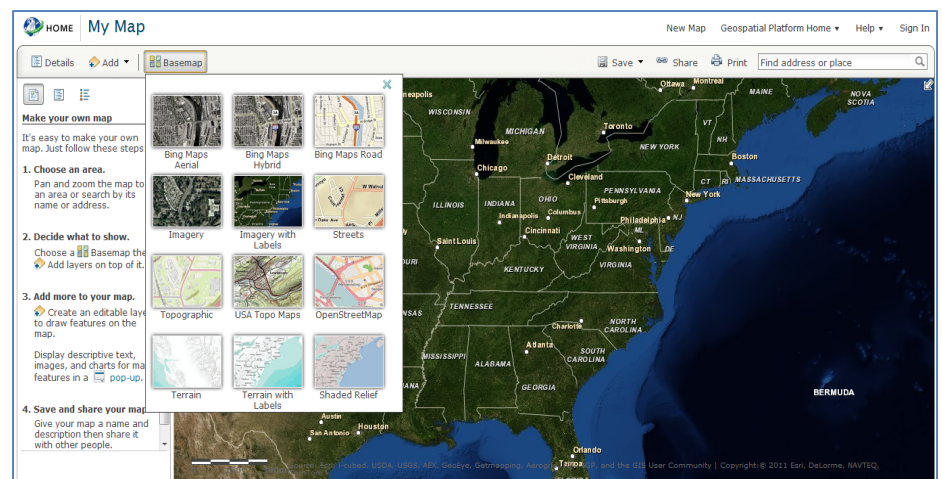
A collection of pre-made maps is available in the Geospatial Platform Map Gallery. Maps in the Gallery include popular datasets from a growing list of Federal departments and agencies, combined with Geospatial Platform basemaps. You can customize Gallery maps by including additional data layers as needed.



### Map Viewer

The Geospatial Platform Map Viewer gives you the ability to:

- Access trusted federal datasets
- Choose from multiple basemaps (imagery, roads, terrain, etc.)
- View data organized by A-16 Data Themes
- Explore our Public Groups to discover maps and information
- Discover data from our State, local, and Tribal partners



### Coming Soon!

Later this year, you will be able to create your own account on the Geospatial Platform, which will allow you to:

- Join, create, and collaborate with groups
- Combine Geospatial Platform data with your own data layers (KML, CSV, ArcGIS Web Service, WMS, etc.)
- Create your own map in the Viewer, and then save, print, or share your map with others

### Resource Center

The Resource Center gives you access to the latest Geospatial Platform news and documents. Visit the Resource Center to download documents from our online library, view the latest press releases, and send us your feedback.