



EDUCATION AND THE WORLD OF WORK: ANCHORS TO A STRONG JUVENILE REENTRY PLAN

Brought to you by the National Reentry Resource Center and the
Bureau of Justice Assistance, U.S. Department of Justice
With support from the Public Welfare Foundation, Joyce
Foundation, Annie E. Casey Foundation, and Open Society Institute

Previous Webinars

- Juvenile Reentry in Concept and Practice (1/26/10)
- Family Engagement in Reentry for Justice-Involved Youth (10/04/10)
- Identifying and Engaging Reentry Mentors for Justice-Involved Youth (11/01/10)

Recordings of previous webinars and other resources are available at

<http://nationalreentryresourcecenter.org/topics/juveniles>

Speakers

- Shay Bilchik, Founder & Director, Center for Juvenile Justice Reform, Georgetown University
- Judge Denise Cubbon, Administrative Judge, Lucas County, OH
- Peter Leone, Professor, College of Education, University of Maryland
- Jim Rieland, former Director, Allegheny County Probation, Pittsburgh, PA
- Mick Moore, Assistant Superintendent for Interagency Relations, Puget Sound Educational Service District, Seattle, WA

Lucas County's Re-entry Experience

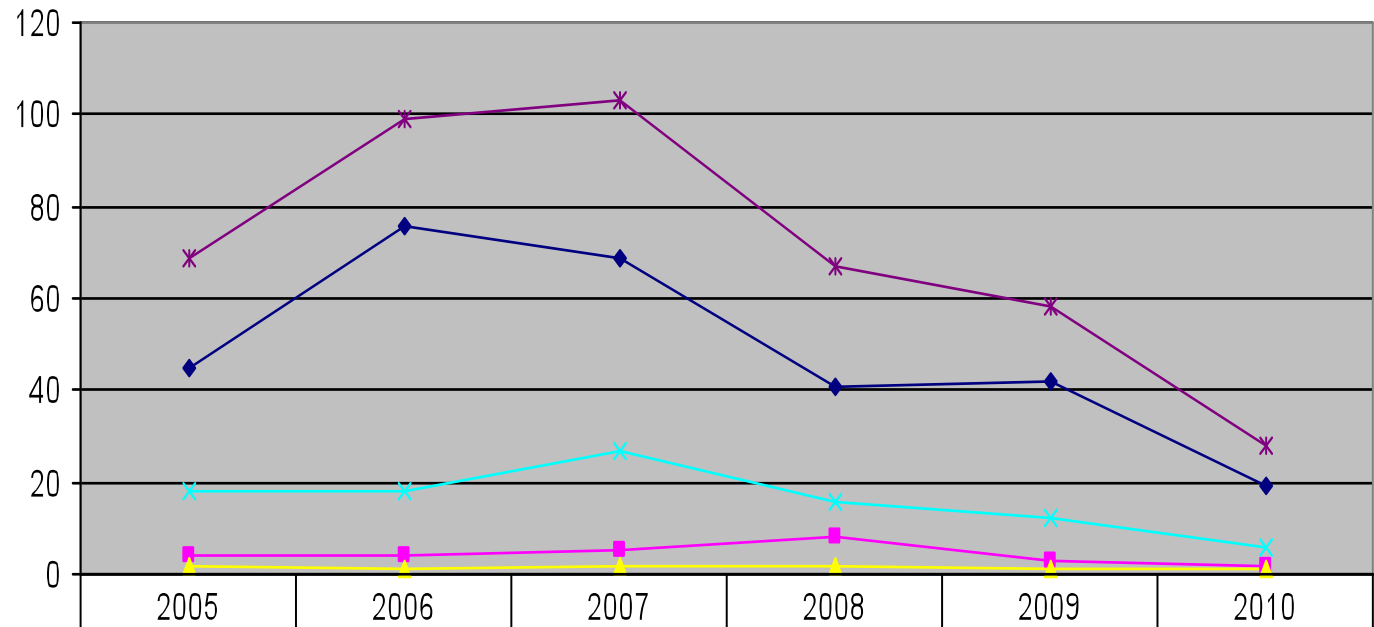
Judge Denise Navarre Cubbon
Administrative Judge

Lucas County Juvenile Court
1801 Spielbusch Avenue
Toledo, Ohio

dcubbo@co.lucas.oh.us

(419) 213-6778

Lucas County Ohio DYS Commitments, Revocations, New Commitments and Recommitments 2005-2010



◆ NEW COMMITMENTS	45	76	69	41	42	19
■ RE-COMMITMENTS	4	4	5	8	3	2
▲ PRIOR COMMITMENTS	2	1	2	2	1	1
× PAROLE REVOCATIONS	18	18	27	16	12	6
* TOTAL	69	99	103	67	58	28

THE DATA REVEALED...



Many youth were not being committed to ODYS on new charges. Youth were being sent on technical violations as “Recommitments, Prior Commitments and Revocations.”

Of all commitments the following percentages were not for new charges:

<u>2005</u>	<u>2006</u>	<u>2007</u>	<u>2008</u>	<u>2009</u>	<u>2010</u>
34%	23%	33%	38%	27%	32%

The Youth Treatment Center (YTC) is a secure 44 bed facility for felony offenders who would otherwise be committed to ODYS.

Of all admissions, the following were successful terminations:

<u>2005</u>	<u>2006</u>	<u>2007</u>	<u>2008</u>	<u>2009</u>
76%	71%	88%	63%	75%

*** Almost 1 out of 3 youth were committed to ODYS as a result of unsuccessful termination from YTC aftercare.**

Current Re-entry Model Developed

Received an OJJDP Earmark

Grant in October 2009 for \$950,000

Main Components of Grant:

1. Engage NCJJ to assess current program to adapt and implement Pennsylvania's Case Management Essentials Model
2. Expand Re-entry to include YTC and Probation
3. Expand the Court's CITE Program



Lessons Learned from Lucas County Re-entry Endeavors 2007-2010

- Be cautious of mixing risk levels.
- Reentry planning must begin at disposition.
- Engage parents at disposition, through commitment and upon re-entry.
- Consider the age of youth upon release from ODYS.
- Independent living services are needed.
- Job readiness training is essential.
- Educational challenges need to be addressed!



Seamless Transition to the Community Re-entry Treatment Center

- **Opened May, 2011**
- **11 cases to date**
- **Evening programming – 7 days per week**
- **Cognitive based treatment**
- **Continuum of incentives and sanctions used as a behavior management tool**
- **Individualized case plan**



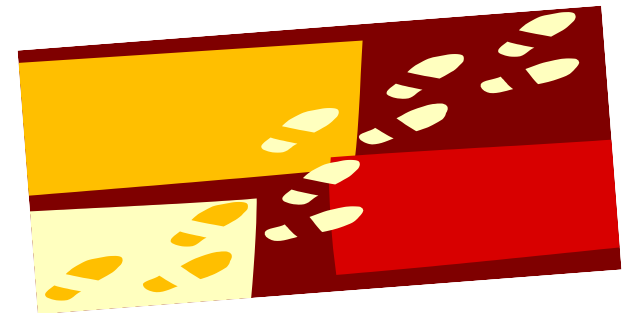
Education Issues to Address in the Re-entry Process

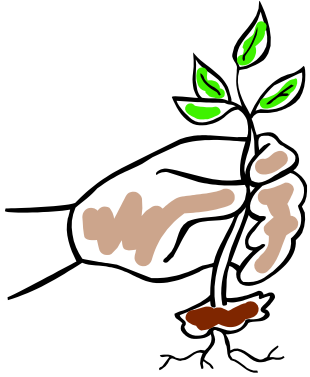
- Survey of Educational Requirements for youth committed to DYS, YTC, Residential Placement and Re-entry Treatment Center
- Identify gaps in educational services
- Meet the educational needs of each youth.



Action Steps for Improved Educational Services for Re-entry Youth

- Partner with the Toledo Public Schools for Educational Services
- Work with ODYS, TPS, Lucas County Office of Education to develop transition plan
- Maintain Educational Plan at YTC, RTC and through the transition to the community
- Develop a menu of educational opportunities for youth
- Engage local resources for youth (tutoring)
- Educate probation, parole and providers on educational opportunities for this special population (with University of Toledo, Owens Community College and other entities)
- Hire Educational Specialist





Expansion of the CITE Program

Community Integration and Training for Employment VOCATIONAL TRAINING

- Job readiness training with paid work experience; employment and supervised community service
- Expand capacity include YTC/Parole youth
- Green construction and weatherization, alternative energy, horticulture and local food production, urban forestry and agriculture, neighborhood improvement, blight reduction and recycling



North Toledo Urban Agriculture Program



VISION

Examples of Future Educational Opportunities for Reentry Youth

- Credit Recovery
- Credit Flex – Youth apply to earn credit for an independent project. (Examples: CITE, Art Integrated Math, Creative Writing, Vocational Programming)
- On-line Academy – JOJ Vision



Chronological Summary of Lucas County Re-entry Project

- **August 2007 – Meeting with Lucas County Juvenile Court, Ohio Department of Youth Services Parole Dept., Lucas County Mental Health and Recovery Services, TASC to discuss re-entry issues; decision to begin Re-entry Court.**
- **November 2007 – Lucas County Juvenile Re-entry Court began; participants drawn from DYS Early Release candidates**
- **October 2009 – OJJDP grant to focus on Re-entry**
- **October 2010 – Re-entry Process begins; expanded program to include YTC and Residential Placements**
- **May 2011 – Re-entry Evening Treatment Program begins**

RESOURCES

- National Council of Juvenile & Family Court Judges:
<http://www.ncjfcj.org/>
- Center for Juvenile Justice Reform, Georgetown University:
<http://cjjr.georgetown.edu/>
- Models for Change, MacArthur Foundation:
<http://www.modelsforchange.net/>
- *Building Pennsylvania's Comprehensive Aftercare Model - Probation Case Management Essentials for Youth in Placement:*
<http://www.modelsforchange.net/publications/203>
- The Argus Community Learning for Living Program
- Findings on Best Practices of Community Re-Entry Programs for Previously Incarcerated Persons - LaFrance Associates
- [*Findings on Youth Employment Training Best Practices- Eisenhower Foundation*](#) - LaFrance Associates
- Replications of the South Bronx Argus Learning for Living Center - Eisenhower Foundation
- The Serious and Violent Offender Reentry Initiative - OJJDP



Reentry: Assessment, Preparation, & Engagement

Peter Leone
Professor, College of Education
University of Maryland



Assessment



Engagement



Preparation

Motivation

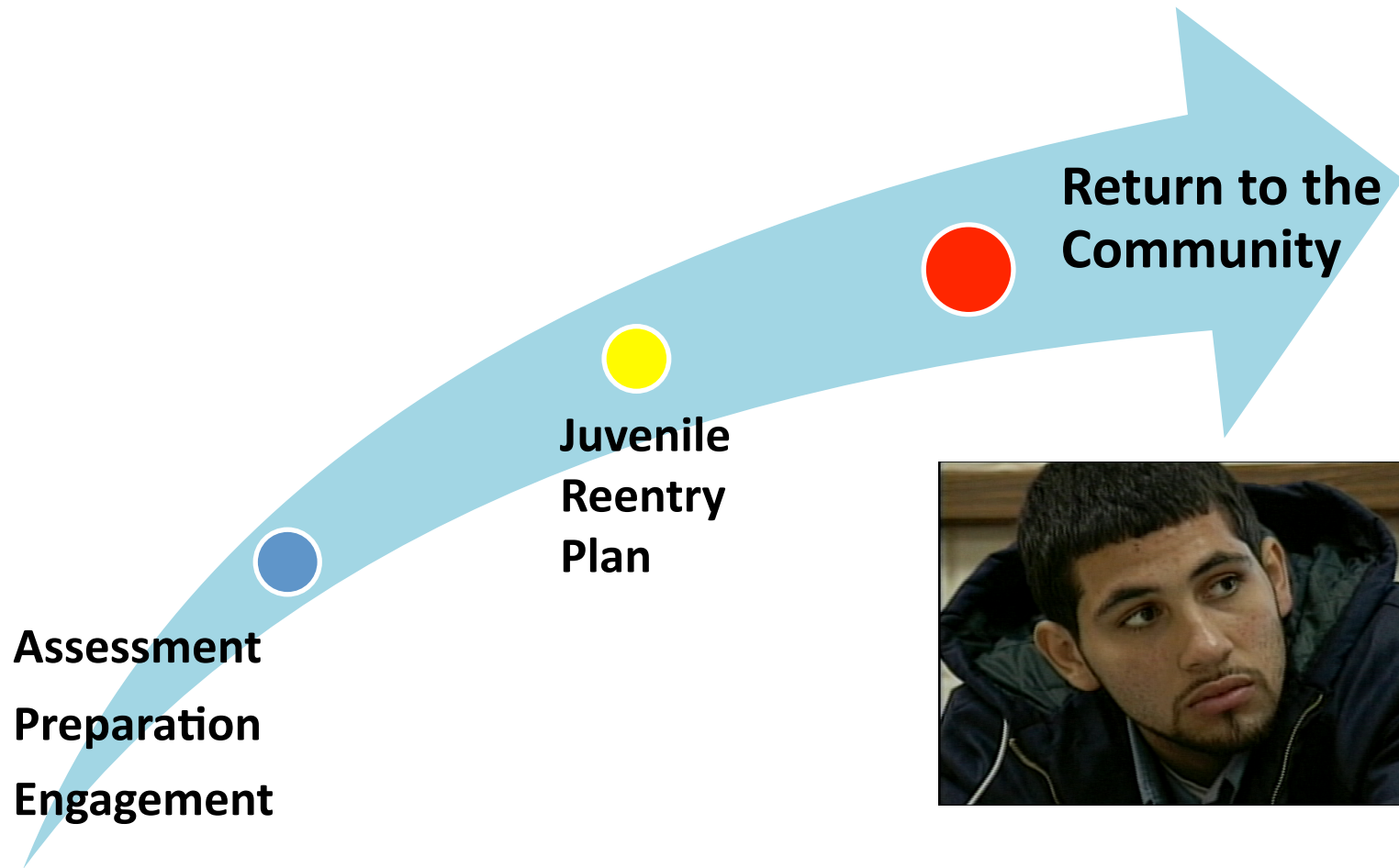
Assessment

- Literacy & Numeracy Skills
- Special Needs
- Credits earned, viability of high school graduation as an option
- GED preparation
- Social skills
- Career tech & post-secondary education interests and aspirations
- Community options
 - Short & long-term
- Family & community support for interests and aspirations

Engagement & Preparation

- High levels of student engagement are associated with achievement gains.
- Student motivation and engagement is associated with choice and self-efficacy.
- Intensive literacy programs are associated with increases in reading fluency and accuracy.
- Close monitoring of student engagement through progress monitoring is associated with students' progression through the curriculum
- Intensive instruction is associated with achievement gains.

Successful Re-entry: Assessment, Preparation, Engagement



Contact Information

Peter Leone

Professor

College of Education

University of Maryland

College Park, MD 20742

leonep@umd.edu



Education in the World of Work

Jim Rieland
Former Director
Allegheny County Probation
Pittsburgh, Pennsylvania

Probation Departments Focus on Offenders - Education

1. Probation/Education Specialist
2. PA Academic and Career/Technical Training Alliance - PACTT

Probation/Education Specialist

- Hire/Train Education Specialist who work for Probation
- Train all Probation Staff on Education Law and Advocacy

Education Specialist Goals

- Offenders Initial Placement
 - Transcript from Home School
 - Schedule of Courses from Home School
 - Within ten (10) Days

During Offenders Placement

- Courses are aligned with home school district
- Opportunity for Credit Recovery and Acceleration

Offenders Re-Entry

- Facilitate Re-Entry to School
- Pre-Release meeting with Home School three (3) weeks prior to Discharge

Offenders Re-Entry Goals

- Finalize Class Schedule
- Arrange for Books and Miscellaneous Materials
- Arrange for Transportation to and from School
- Identify Extra-Curricular Activities that the Offender is eligible for
- Parent Signs Required Documents

Offender Re-Entry

- Train All Staff on School Law and Advocacy
- Identify Resources
- *Educational Aftercare & Reintegration Toolkit for Juvenile Justice Professionals*, MacArthur Foundation:
<http://www.modelsforchange.net/publications/225>

PA Academic & Career Technical/Training

- Sponsored by the Council of Chief Juvenile Probation Officers
- Funded by MacArthur Foundation, PA Commission on Crime and Delinquency (PCCD), and Stoneleigh Fellowship to the PACTT Director
- Began in 2008 as a pilot of Allegheny and Philadelphia Counties, Pittsburgh and Philadelphia School Districts and nine (9) Private Facilities

PACTT

- Assist with Academic Reform
- Job Readiness Training and the opportunity for basic certifications
- Develop and align Career and Technical Education (CTE) curricula with recognized industry standards and PDE/BCTE programs of study
- Link CTE training to academics

PACTT

- Improve communication between residential facilities and home schools
- Work Experience and Employment for youth in placement and upon return to the community
- Data
- Address systemic barriers impacting

PACTT

- Academics
 - Offer rigorous academic curriculum aligned with state standards
 - Offer opportunities for credit recovery and acceleration
 - Offer opportunities for remediation(numeracy/literacy
 - Make every effort to obtain youth academic records within ten (10) days of youth's arrival)

PACTT

- CTE
 - Teach the PACTT Employability and Soft Skills Manual
 - Offer at least one basic certification (OSHA 10, ServSafe, MOS, or International Computer Driving License (ICDL))
 - Offer at least one CTE track aligned with industry standards and identified as high priority/high employment

Maintain a rigorous academic curriculum fully aligned with PA Academic Standards

- PDE Standards Aligned System (SAS)
- Credit Recovery and Acceleration
- College and Career Preparation
- Subjects Taught Using Real World Applications
- Collaborative Lesson Planning
- Educational Resources
- Professional Development Opportunities

Offer Credit Recovery and Acceleration Opportunities

- Computer-based Software Programs: PLATO, NovaNet, A+, and others
- Extended School Day and Weekends
- Dual Enrollment and College in the High School Opportunities

Offer Opportunity for Remediation

- Significant educational gaps are typical of this student population
- Assessments upon entry determine appropriate placement
- SAS can identify remedial lessons to match academic standards in these areas
- Math and literacy coaches provide classroom support

PACTT

1. Teach the PACTT Employability and Soft Skills Manual
2. Offer at least one basic certification (OSHA 10, ServSafe, MOS)
3. Offer at least one CTE track aligned with industry standards and identified as high priority/high employment
4. Work to develop a relationship with your Workforce Investment Board (WIB)

Focus on Key Job Readiness Competencies

- Uniform across all PACTT facilities
- Portable to avoid repeating/starting over when youth changes programs or returns to community
- Not intended to replace current “life skills” curriculum
- Continued priority placed on development of the youth’s portfolio

Offer at Least One Basic Certification

- OSHA 10
- ServSafe
- MOS

OSHA 10

Occupational Safety and Health Administration 10 Safety Course

- Two 10 hour certifications
 - General Industry
 - Construction
- Provides employers with entry level employees who are trained in basic safety
- Saves employer money, making for a better candidate
- Resume/portfolio enhancer

ServSafe

- One certified food protection manager required per facility
- ServSafe is an approved program in PA
- Resume/Portfolio Enhancer

MOS-Microsoft Office Specialist

- Skills learned will enhance the overall educational experience
 - Word Processing
 - Spreadsheets
 - Presentations
- Initial instruction may be infused within other instructional programs such as Language Arts or Math
- Instruction can be done on site
- Testing may need to be done off site at an official testing center.

Recommendations

- Focus on Education
- Train Staff on Education Law & Advocacy

Recommendations

- Focus on Both Academic and Career Training
- Align Placement Facility School with Home School Standards

Recommendations

- Facilitate Youths Re-Entry to School & Community
- Focus on Certifications that are Valued and Required by the Business Community

Contact Information

Jim Rieland

jamesrieland@comcast.net

PathNet: One Community's Effort to Reduce the Dropout Epidemic among Juvenile Justice Youth

Mick Moore

Assistant Superintendent for Interagency
Relations

Puget Sound Educational Service District
Seattle, Washington

Presentation Outline

- **Part 1 – PathNet Initiative**
 - » Good Idea leading to the big picture
 - » Four Cornerstones of effective engagement
 - » The **GED^{plus}**
 - » Structure
- **Part 2 – Policy**
 - » The critical importance of policy change
 - » The rewards of legislation
- **Part 3 – Local Efforts**
 - » Avanza
 - » LEAP
 - » PathNet Pilot
- **Part 4 – Wrap Up and Questions**

A Good Idea...

Juvenile justice youth *in* our communities, who are not “high school diploma bound”, should have an alternative pathway toward an end goal of a living wage job and career.

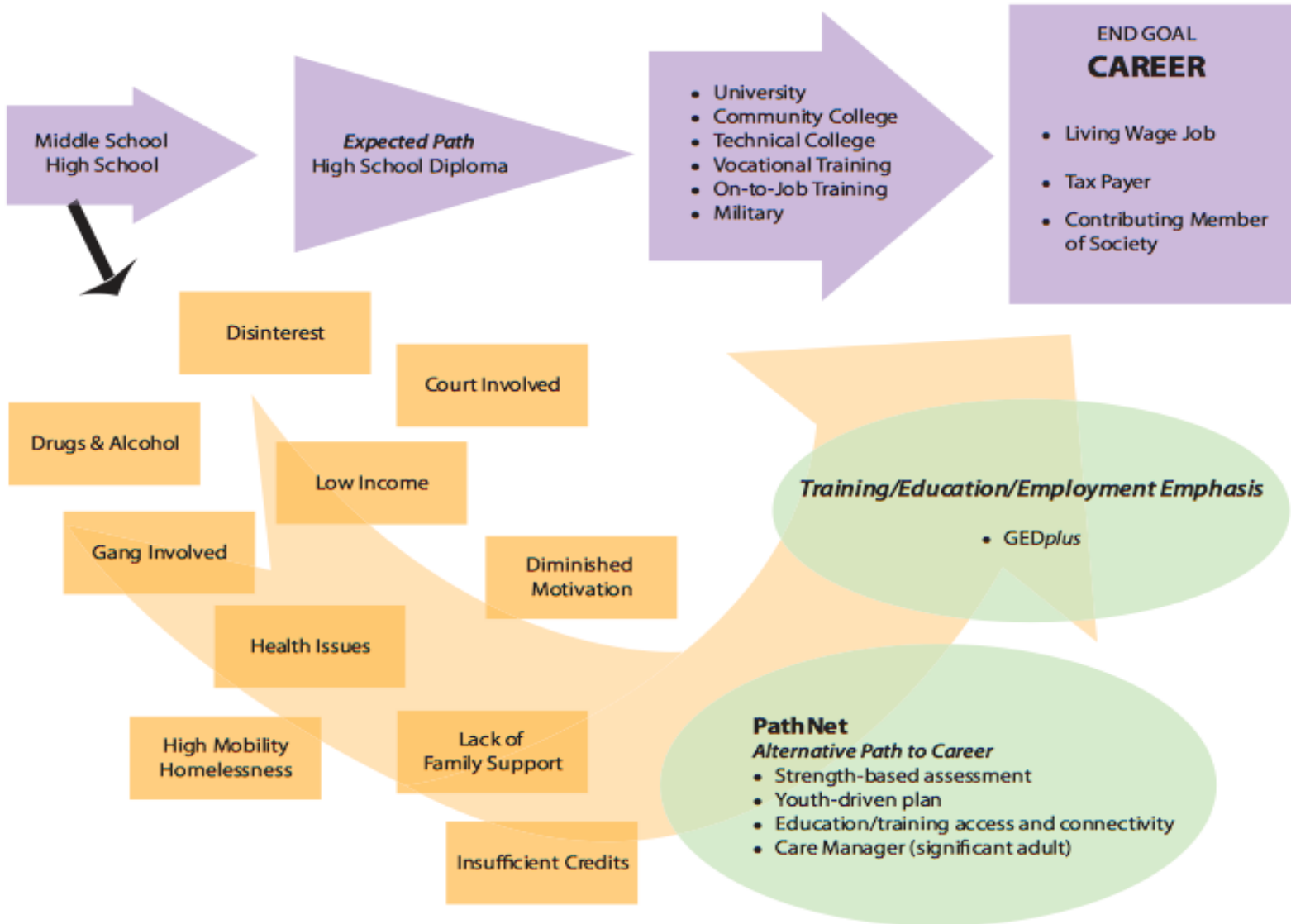
Part 1 : The PathNet Initiative

WHAT:

The PathNet Initiative is a regional and state model of service delivery that reengages juvenile justice involved out-of-school youth through best practices in systems integration and interagency collaboration.

HOW:

Access and connection to a seamless network of services that support and advance education and employment goals.



First Cornerstone of PathNet

- A current strength-based assessment
 - Youth realizes many strengths.
 - Self-image and attitude improves
 - Aligned to Key Area 2: “Ensuring that reentry initiatives *build on youths’ strengths and assets* to promote pro-social development”. (Five Emerging Practices in Juvenile Reentry, Bilchik, 2011)
 - Provided by a “connections coordinator.”

Second Cornerstone of PathNet

- A student-driven plan
 - PathNet mantra: “no plan, no hope”
 - Student drives the plan (based on the strength based assessment)
 - Aligned to Key Area 4: “*Prioritizing education and employment* as essential elements of a reentry plan”.
(Five Emerging Practices in Juvenile Reentry, Bilchik, 2011)
 - Supported by an “educational/vocational specialist”.

Third Cornerstone of PathNet

- Connectivity to the right educational/vocational program for that student
 - Student driven plan drives the connection
 - Education and Employment Options are identified as part of the network.
 - Alternative Education Guide.
 - Aligned to Key Area 5: “Providing stable, well supported transitions to adulthood that helps *to create lifelong connections*”. (Five Emerging Practices in Juvenile Reentry, Bilchik, 2011)

Fourth Cornerstone of PathNet

- Care Manager
 - An adult who cares for the student
 - Reversing a significant cause of disengagement
 - Aligned to Key Area 3 :“*Engaging families and community members in a meaningful manner throughout the reentry process*”. (Five Emerging Practices in Juvenile Reentry, Bilchik, 2011)

GED *plus*⁺

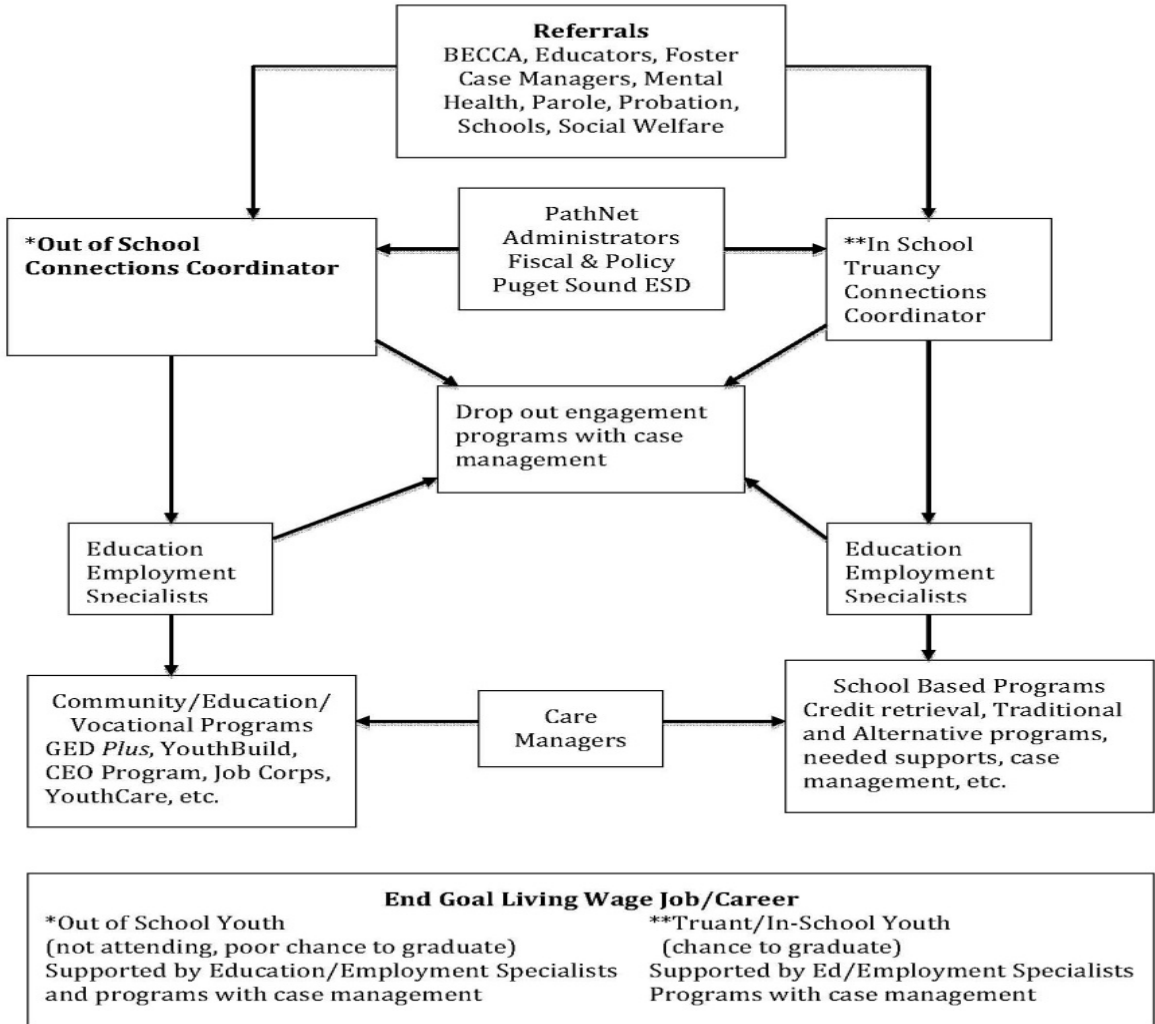


GED *plus*⁺

- Defined as a GED plus an immediate connection to the next educational/vocational step (e.g., community college, certificate program, vocational training, etc.) that leads to an end-goal of a living-wage job and career.

PathNet Structure

PathNet Implementation



Part 2: POLICY

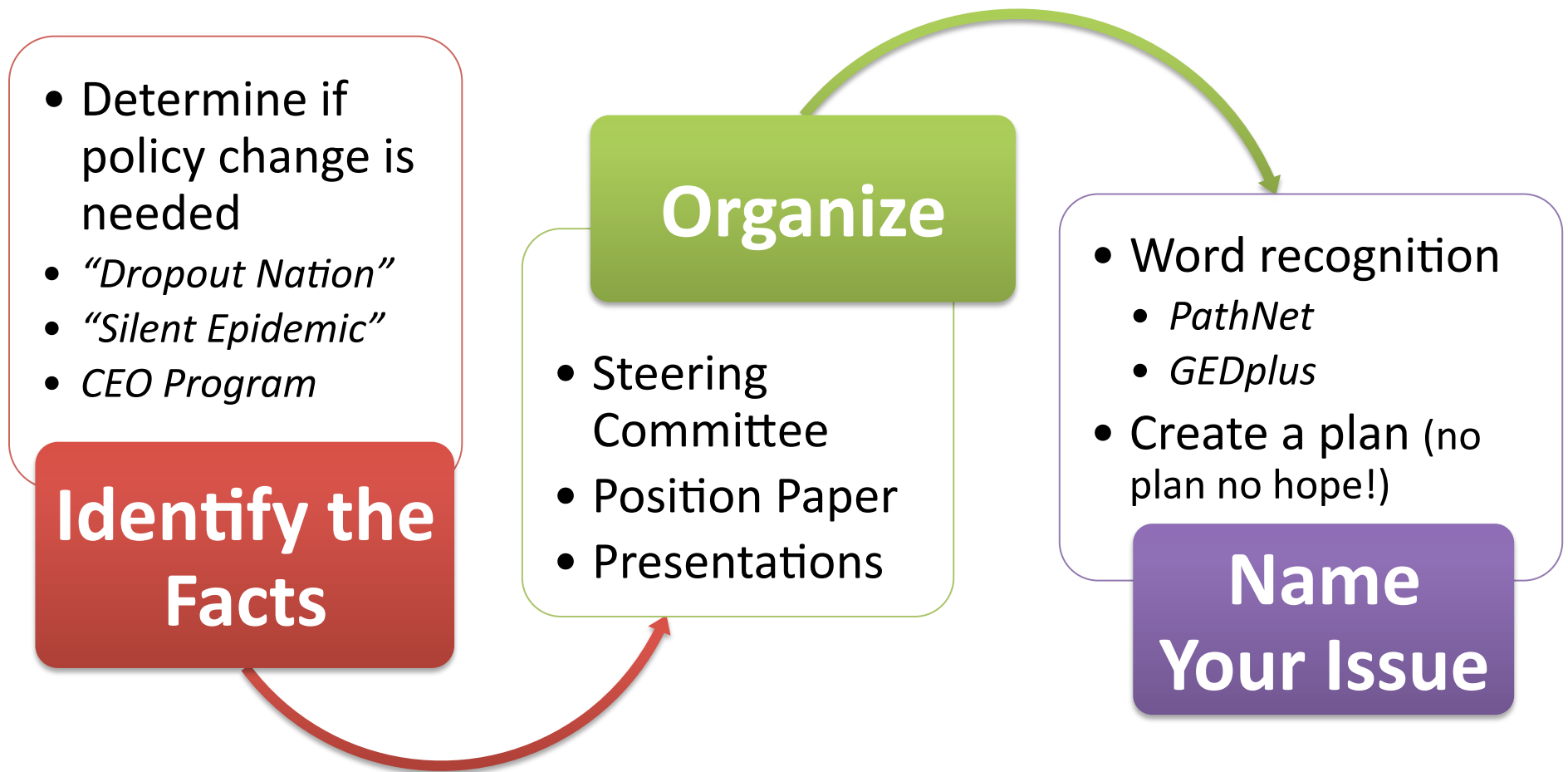
**Dropout
Reengagement
to Education/
Vocation**

**Position
Paper**

**Legislative
Action**

Implementation

Reengagement to Education/Vocation



Position Paper

- Collect the facts
- State the need
- Develop your position

**Write 1st
Draft**

**Update-
Expand-
Adapt**

- Brand the issue
- Use common language
- Seek Feedback
- Adapt for different audiences

- Let the facts carry the message
 - Leverage press
 - Gain key supporters
- Dropout Position Paper ('06)
- PathNet Summary Paper ('07)
- PathNet Legislative Priorities Paper (2007)
- Bilchik Memo on GED*plus* ('09)
- Moore Addendum ('09)
- Presentations ('10 & '11)
- Committees ('11)

Document

Legislative Action

- **Building Bridges Initiative**

- 1st WA State Legislation on dropouts
- Recommendation # 3: *“Create a Dropout Retrieval System for 16 to 21 Year-Old Youth who are not Likely to Return to High School”*

HB 1573
(2007 – 2009)

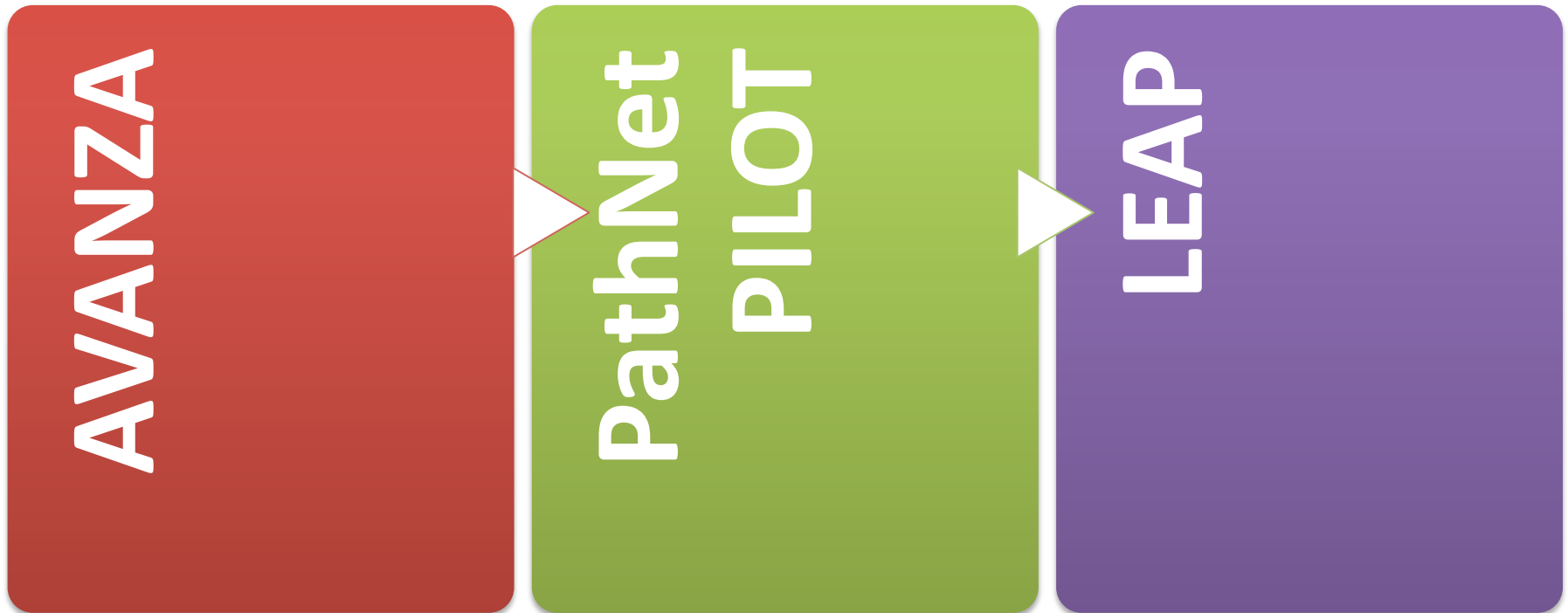
SHB 1418
(2009)

- First legislation to call for a statewide dropout retrieval system
- Passed: House
- Did not make it out of committee in Senate
- Failed partially due to fiscal note

- Second attempt passed
- No fiscal note – permissive
- Established “1418 Implementation Committee” to develop infrastructure:
 - Policies and procedures
 - Rules and recommendations
 - Model contracts and agreements
 - Guide book

ESSHB 1418
(2010)

Part 3: Reaching Across the Continuum of Disengaged Youth



Avanza

A partnership with:

- ◆ *Highline Public Schools*
- ◆ *Center for Children and Youth Justice*
- ◆ *King County Work Training Program*
- ◆ *Puget Sound Educational Service District*
- ◆ *SeaMar*
- ◆ *King County Juvenile Court*

Funded in part by Center for Children and Youth Justice (CCYJ)

Avanza

- Dropout Intervention
- Focused on Latino Youth
- School-based program
 - Education support
 - Connection to vocation
- Latino Care Manager

Avanza Student Success

Only 1 student
committed a
juvenile offense

Only 3 students
dropped out

27% advanced one
grade level

60% earned at least
two high school credits

87% made progress
towards graduation

**Totem pole for a local youth camp
under the direction of a Native
American artist**



**Avanza: Giving back to the community
while promoting pro-social
development**

LEAP

- A collaborative partnership between state and local governments to develop strategies for serving young offenders returning to the community from institutions or detention facilities.

-Funded by the Department of Labor

LEAP Student Success

79.6% of students are going to school and/or working.

42% of students have received work experience.

PathNet Pilot

A systematic coordination of existing programs that ensures each dropout has a networked path to reengage in their education and training.

*Funded by the MacArthur Foundation through their
Models for Change Initiative for Systems Reform in Juvenile Justice.*

PathNet Pilot

- At least 100 juvenile justice youth per year for two years.
- Youth on probation who are moderate to high risk to reoffend.
- Education and Employment Training
 - A Promising Practice

PathNet Pilot Student Success

81% have completed a strength-based assessment and youth driven plan.

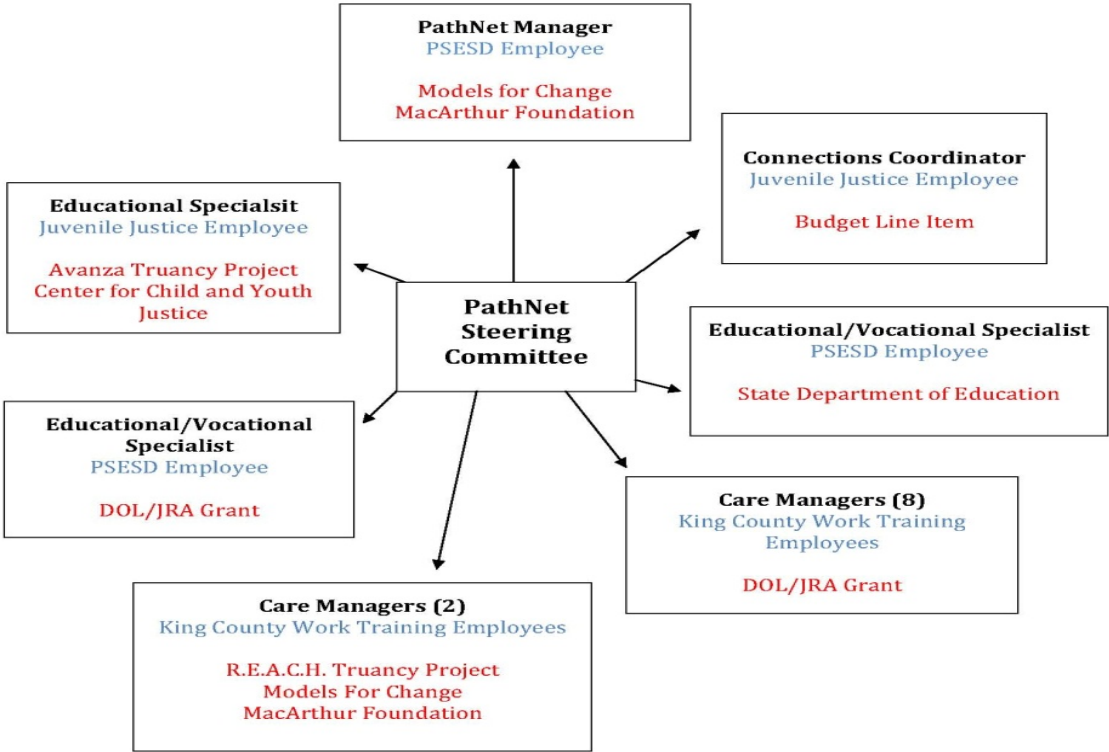
74% students are reengaged in their education.

30% of reengaged students have already earned a *GEDplus* or HS diploma.

100% of graduates are working on expanded pathways for *GEDplus*.

Overview of PathNet Community Partners

PathNet Leverage



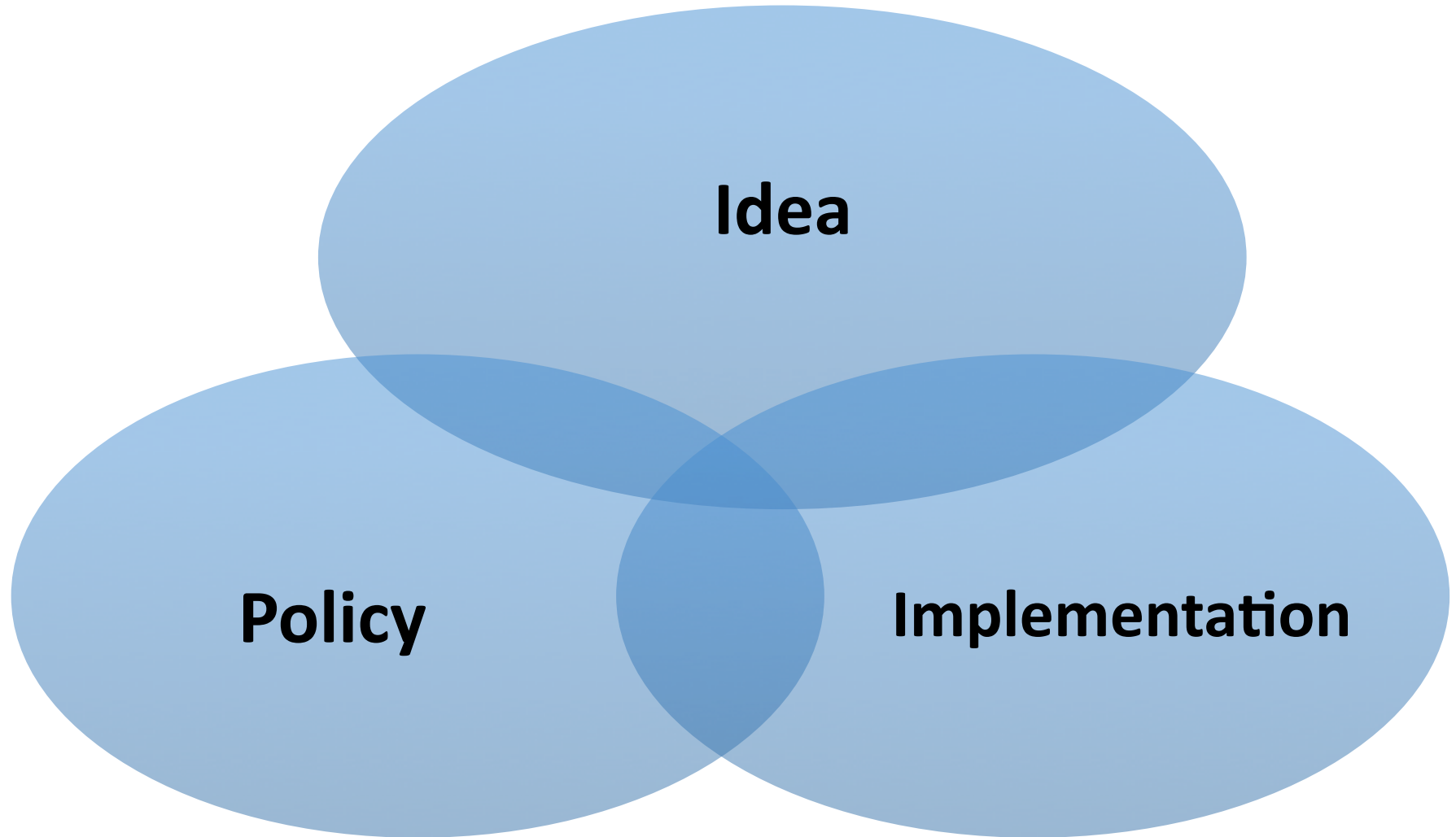
Overall Outcome Measures for All Programs

- Decrease recidivism.
- Increase education and post secondary placements.
- Increase engagement in education/employment training programs.
- Increase degree/alternative credential attainment
- End Goal: Living wage job and career

Future Support *for* Measurement Outcomes

- Vera Institute of Justice
- National Center for Juvenile Justice
- Robert F. Kennedy Children's Action Corps
- Center for Juvenile Justice Reform
- Office of the Superintendent of Public Instruction

Part 4 -WRAP UP



Lessons learned

- Reentry is a process; Not a singular event.
- Educational planning is essential to reentry.
- **GED***plus*⁺ is a vehicle for successful reentry.
- Build relationships on positions, not on personalities.
- Don't overlook policy.
- Systems integration takes a long long time.

Contact Information

John Mick Moore, Ph.D.

Assistant to the Superintendent for Interagency Relations

Puget Sound Educational Service District (PSESD)

800 Oakesdale Ave. S.W.

Renton, Washington 98055-1221

Phone: (425) 917-7615

Email: mmoore@psed.org

Kelly Goodsell, Ed.D

PathNet Manager

Puget Sound Educational Service District (PSESD)

800 Oakesdale Ave. S.W.

Renton, Washington 98055-1221

Phone: (425) 917-7619

Email: kgoodsell@psed.org



QUESTIONS AND ANSWERS



the NATIONAL REENTRY RESOURCE CENTER

— A project of the CSG Justice Center —

www.nationalreentryresourcecenter.org

- The resource center is continually updating its website with materials relevant to the reentry field.
- Sign up for the monthly NRRC newsletter to receive news about upcoming distance learning and funding opportunities.

The screenshot shows the homepage of the National Reentry Resource Center. At the top, there is a navigation menu with links for Home, About, Library, Topics, Training & TA, Reentry Facts, and What Works. Below the navigation is a search bar. The main content area features a welcome message and a description of the center's mission. On the left side, there are sections for Audiences (States/Locals, Community and Faith-based Organizations, People Returning Home) and Tools & Resources (Calendar, Funding, Reentry Service Directories, Program Examples, Second Chance Act, Forums/Networking, Announcements). On the right side, there is a 'What's New?' section with several news items, including 'The National Reentry Resource Center is Hiring!', 'Register Now for Webinar: The Essential Elements of Reentry Webinar: Primary Care and the Transitions Clinic Approach', 'Updated Version of Back to School: A Guide to Continuing Your Education after Prison Now Available', and 'Watch "From Arrest to Homecoming--Addressing the Needs of Children of Incarcerated Parents" Webinar'. At the bottom, there is a 'Popular Topics' section with links for Housing, Substance Abuse, Juveniles, Employment, and Starting a Reentry Initiative, and an 'Announcements' section with links for 'National Reentry Resource Center Announces Two Upcoming Web Events', 'Recognizing the Value of Peer Recovery Support', and 'Justice Mapping Center Launches First National Atlas of Criminal Justice Data'. The BJA logo is visible at the bottom left.



(877) 332-1719

www.nationalreentryresourcecenter.org

This presentation was prepared by the National Reentry Resource Center, in partnership with Shay Bilchik, Denise Cubbon, Peter Leone, Mick Moore, and Jim Rieland. Presentations are not externally reviewed for form or content. The statements reflect the views of the authors and should not be considered the official position of the CSG Justice Center, the members of the Council of State Governments, or the U.S. Department of Justice.