

This Month in Futures Markets – August 2012

Wednesday, September 05, 2012 OCE, Commodity Futures Trading Commission

Disclaimer: This report is based on the Commitments of Traders (COT) report released on August 31, 2012. Up to date COT reports can be accessed at <http://www.cftc.gov/marketreports/commitmentsoftraders/index.htm>

For each commodity, the COT reports provide information on the size and the direction of the positions taken, across all maturities, by three categories of futures traders. These three trader categories are called “commercials”, “non-commercials”, and “non-reportable”. **Commercial traders** are those who use futures or option contracts in a given commodity for hedging purposes, as defined in CFTC regulations. Commercial traders hold positions in both the underlying commodity and in the futures (or options) contracts on that commodity. By contrast, **non-commercial traders** do not own the underlying asset or its financial equivalent; they hold only positions in futures (or options) contracts. Finally, **non-reportable positions** are those held by traders who do not meet the reporting thresholds set by the CFTC (usually small traders).

Futures Markets:

Energy

NYMEX WTI Crude Oil futures open interest increased 8.3 percent in August. *Commercial* participants, who accounted for 51.2 percent of open interest, held net short positions; they increased their long positions by 5.2 percent and increased their short positions by 13.4 percent. *Non-commercial* participants, who accounted for 44.4 percent of open interest, held net long positions. They increased their long positions by 11.3 percent and increased their short positions by 1.0 percent. *Non-reportable* participants, who accounted for 4.5 percent of total open interest, held net long positions; they increased their long positions by 4.8 percent and increased their short positions by 5.2 percent.

NYMEX Henry Hub Natural Gas futures open interest fell 4.1 percent in August. *Commercial* participants, who accounted for 34.4 percent of open interest, held net long positions; they increased their long positions by 4.2 percent and increased their short positions by 2.7 percent. *Non-commercial* participants, who accounted for 60.4 percent of open interest, held net short positions. They decreased their long positions by 9.0 percent and decreased their short positions by 7.6 percent. *Non-reportable* participants, who accounted for 5.2 percent of total open interest, held net long positions; they decreased their long positions by 2.6 percent and increased their short positions by 4.0 percent.

NYMEX Heating Oil futures open interest increased 4.6 percent in August. *Commercial* participants, who accounted for 61.5 percent of open interest, held net short positions; they decreased their long positions by 1.1 percent and increased their short positions by 11.8 percent. *Non-commercial* participants, who accounted for 27.5 percent of open interest, held net long positions. They increased their long positions by 8.1 percent and decreased their short positions by 6.1 percent. *Non-reportable* participants, who accounted for 11.0 percent of total open interest, held net long positions; they increased their long positions by 25.7 percent and

decreased their short positions by 10.2 percent.

NYMEX RBOB Gasoline futures open interest increased 12.0 percent in August. *Commercial* participants, who accounted for 56.6 percent of open interest, held net short positions; they increased their long positions by 4.8 percent and increased their short positions by 7.6 percent. *Non-commercial* participants, who accounted for 36.3 percent of open interest, held net long positions. They increased their long positions by 17.0 percent and increased their short positions by 27.4 percent. *Non-reportable* participants, who accounted for 7.1 percent of total open interest, held net long positions; they increased their long positions by 21.2 percent and increased their short positions by 11.6 percent.

Agriculture

CBOT Corn futures open interest increased 1.7 percent in August. *Commercial* participants, who accounted for 54.3 percent of open interest, held net short positions; they decreased their long positions by 6.5 percent and increased their short positions by 3.0 percent. *Non-commercial* participants, who accounted for 31.2 percent of open interest, held net long positions. They increased their long positions by 10.3 percent and decreased their short positions by 2.4 percent. *Non-reportable* participants, who accounted for 14.5 percent of total open interest, held net short positions; they increased their long positions by 4.0 percent and increased their short positions by 1.0 percent.

CBOT Wheat futures open interest fell 5.2 percent in August. *Commercial* participants, who accounted for 48.8 percent of open interest, held net short positions; they decreased their long positions by 3.6 percent and decreased their short positions by 4.6 percent. *Non-commercial* participants, who accounted for 41.3 percent of open interest, held net long positions. They decreased their long positions by 7.2 percent and decreased their short positions by 8.7 percent. *Non-reportable* participants, who accounted for 9.8 percent of total open interest, held net short positions; they decreased their long positions by 2.6 percent and increased their short positions by 3.7 percent.

CBOT Soybeans futures open interest fell 2.4 percent in August. *Commercial* participants, who accounted for 52.1 percent of open interest, held net short positions; they decreased their long positions by 5.4 percent and decreased their short positions by 5.8 percent. *Non-commercial* participants, who accounted for 37.7 percent of open interest, held net long positions. They decreased their long positions by 2.4 percent and increased their short positions by 5.6 percent. *Non-reportable* participants, who accounted for 10.2 percent of total open interest, held net long positions; they increased their long positions by 9.8 percent and increased their short positions by 5.4 percent.

CBOT Soybean Oil futures open interest increased 3.0 percent in August. *Commercial* participants, who accounted for 55.2 percent of open interest, held net short positions; they decreased their long positions by 11.6 percent and increased their short positions by 4.7 percent. *Non-commercial* participants, who accounted for 35.1 percent of open interest, held net long positions. They increased their long positions by 17.6 percent and increased their short positions by 0.2 percent. *Non-reportable* participants, who accounted for 9.7 percent of total open interest, held net long positions; they increased their long positions by 41.8 percent and increased their short positions by 1.6 percent.

Soft Commodities

ICE Futures U.S. Sugar futures open interest increased 7.7 percent in August. *Commercial* participants, who accounted for 59.6 percent of open interest, held net short positions; they

increased their long positions by 10.0 percent and decreased their short positions by 9.3 percent. *Non-commercial* participants, who accounted for 29.5 percent of open interest, held net long positions. They increased their long positions by 4.0 percent and increased their short positions by 64.2 percent. *Non-reportable* participants, who accounted for 10.9 percent of total open interest, held net short positions; they increased their long positions by 8.4 percent and increased their short positions by 59.4 percent.

ICE Futures U.S. Coffee futures open interest changed less than 0.1 percent in August. *Commercial* participants, who accounted for 53.0 percent of open interest, held net long positions; they increased their long positions by 2.3 percent and decreased their short positions by 15.6 percent. *Non-commercial* participants, who accounted for 41.4 percent of open interest, held net short positions. They decreased their long positions by 4.0 percent and increased their short positions by 24.4 percent. *Non-reportable* participants, who accounted for 5.6 percent of total open interest, held net short positions; they increased their long positions by 2.5 percent and decreased their short positions by 7.2 percent.

ICE Futures U.S. Cocoa futures open interest fell 1.9 percent in August. *Commercial* participants, who accounted for 58.4 percent of open interest, held net short positions; they decreased their long positions by 10.9 percent and increased their short positions by 0.9 percent. *Non-commercial* participants, who accounted for 36.4 percent of open interest, held net long positions. They increased their long positions by 9.2 percent and decreased their short positions by 2.5 percent. *Non-reportable* participants, who accounted for 5.1 percent of total open interest, held net long positions; they increased their long positions by 10.0 percent and decreased their short positions by 34.6 percent.

ICE Futures U.S. Cotton futures open interest increased 1.7 percent in August. *Commercial* participants, who accounted for 50.2 percent of open interest, held net short positions; they decreased their long positions by 5.2 percent and increased their short positions by 11.0 percent. *Non-commercial* participants, who accounted for 41.7 percent of open interest, held net long positions. They increased their long positions by 9.4 percent and decreased their short positions by 7.0 percent. *Non-reportable* participants, who accounted for 8.2 percent of total open interest, held net long positions; they increased their long positions by 9.9 percent and decreased their short positions by 3.8 percent.

Financials

CME 3-month Eurodollars futures open interest fell 0.3 percent in August. *Commercial* participants, who accounted for 60.6 percent of open interest, held net short positions; they increased their long positions by 0.8 percent and decreased their short positions by 1.6 percent. *Non-commercial* participants, who accounted for 28.1 percent of open interest, held net long positions. They decreased their long positions by 2.1 percent and increased their short positions by 0.1 percent. *Non-reportable* participants, who accounted for 11.3 percent of total open interest, held net short positions; they decreased their long positions by 0.2 percent and increased their short positions by 6.7 percent.

CME Euro-FX futures open interest increased 0.2 percent in August. *Commercial* participants, who accounted for 51.6 percent of open interest, held net long positions; they decreased their long positions by 4.0 percent and increased their short positions by 58.1 percent. *Non-commercial* participants, who accounted for 32.1 percent of open interest, held net short positions. They increased their long positions by 10.6 percent and decreased their short positions by 17.8 percent. *Non-reportable* participants, who accounted for 16.3 percent of total open interest, held net short positions; they increased their long positions by 15.7 percent and decreased their short positions by 3.8 percent.

CBOT 10-year Treasury Notes futures open interest fell 8.7 percent in August. *Commercial* participants, who accounted for 64.6 percent of open interest, held net short positions; they decreased their long positions by 12.2 percent and decreased their short positions by 5.0 percent. *Non-commercial* participants, who accounted for 15.5 percent of open interest, held net long positions. They decreased their long positions by 13.6 percent and decreased their short positions by 29.2 percent. *Non-reportable* participants, who accounted for 19.9 percent of total open interest, held net long positions; they increased their long positions by 10.6 percent and decreased their short positions by 1.4 percent.

CME S&P 500 futures open interest increased 2.9 percent in August. *Commercial* participants, who accounted for 66.3 percent of open interest, held net short positions; they increased their long positions by 5.1 percent and increased their short positions by 6.4 percent. *Non-commercial* participants, who accounted for 5.1 percent of open interest, held net long positions. They decreased their long positions by 6.0 percent and increased their short positions by 8.5 percent. *Non-reportable* participants, who accounted for 28.6 percent of total open interest, held net long positions; they increased their long positions by 0.1 percent and decreased their short positions by 5.2 percent.

Metals

NYMEX Gold futures open interest increased 5.7 percent in August. *Commercial* participants, who accounted for 56.5 percent of open interest, held net short positions; they decreased their long positions by 10.5 percent and increased their short positions by 10.1 percent. *Non-commercial* participants, who accounted for 32.8 percent of open interest, held net long positions. They increased their long positions by 13.2 percent and decreased their short positions by 10.2 percent. *Non-reportable* participants, who accounted for 10.7 percent of total open interest, held net long positions; they increased their long positions by 25.5 percent and decreased their short positions by 5.3 percent.

NYMEX Silver futures open interest changed less than 0.1 percent in August. *Commercial* participants, who accounted for 47.1 percent of open interest, held net short positions; they decreased their long positions by 13.0 percent and increased their short positions by 17.8 percent. *Non-commercial* participants, who accounted for 39.0 percent of open interest, held net long positions. They increased their long positions by 8.3 percent and decreased their short positions by 24.6 percent. *Non-reportable* participants, who accounted for 13.9 percent of total open interest, held net long positions; they increased their long positions by 4.1 percent and decreased their short positions by 5.9 percent.

NYMEX Copper futures open interest increased 1.7 percent in August. *Commercial* participants, who accounted for 48.2 percent of open interest, held net long positions; they decreased their long positions by 4.7 percent and increased their short positions by 11.1 percent. *Non-commercial* participants, who accounted for 41.8 percent of open interest, held net short positions. They increased their long positions by 9.6 percent and decreased their short positions by 2.5 percent. *Non-reportable* participants, who accounted for 10.0 percent of total open interest, held net short positions; they increased their long positions by 11.7 percent and decreased their short positions by 11.2 percent.

NYMEX Platinum futures open interest increased 4.3 percent in August. *Commercial* participants, who accounted for 42.8 percent of open interest, held net short positions; they decreased their long positions by 29.7 percent and increased their short positions by 30.6 percent. *Non-commercial* participants, who accounted for 48.8 percent of open interest, held net long positions. They increased their long positions by 11.5 percent and decreased their short positions by 33.4 percent. *Non-reportable* participants, who accounted for 8.4 percent of total open interest, held net long positions; they increased their long positions by 16.7 percent and

decreased their short positions by 26.1 percent.

Livestock

CME Lean Hogs futures open interest increased 3.8 percent in August. *Commercial* participants, who accounted for 37.9 percent of open interest, held net short positions; they decreased their long positions by 2.0 percent and decreased their short positions by 11.6 percent. *Non-commercial* participants, who accounted for 49.8 percent of open interest, held net long positions. They increased their long positions by 5.8 percent and increased their short positions by 22.4 percent. *Non-reportable* participants, who accounted for 12.4 percent of total open interest, held net short positions; they increased their long positions by 17.5 percent and increased their short positions by 0.3 percent.

CME Live Cattle futures open interest fell 6.3 percent in August. *Commercial* participants, who accounted for 44.4 percent of open interest, held net long positions; they decreased their long positions by 3.8 percent and decreased their short positions by 2.5 percent. *Non-commercial* participants, who accounted for 43.3 percent of open interest, held net long positions. They decreased their long positions by 9.2 percent and decreased their short positions by 11.7 percent. *Non-reportable* participants, who accounted for 12.3 percent of total open interest, held net short positions; they decreased their long positions by 2.1 percent and decreased their short positions by 1.6 percent.

Futures and Options Combined Markets:

Energy

NYMEX WTI Crude Oil futures and options (thereafter combined) open interest increased 6.3 percent in August. *Commercial* participants, who accounted for 54.2 percent of open interest, held net short positions; their long exposure was increased by 5.2 percent and their short exposure was increased by 10.0 percent. *Non-commercial* participants, who accounted for 42.7 percent of open interest, held net long positions. Their long exposure was increased by 7.8 percent and their short exposure was increased by 0.9 percent. *Non-reportable* participants, who accounted for 3.1 percent of total open interest, held net long positions; their long exposure was increased by 1.7 percent and their short exposure was increased by 4.1 percent.

NYMEX Henry Hub Natural Gas combined open interest fell 4.4 percent in August. *Commercial* participants, who accounted for 33.8 percent of open interest, held net long positions; their long exposure was increased by 3.8 percent and their short exposure was increased by 2.1 percent. *Non-commercial* participants, who accounted for 60.9 percent of open interest, held net short positions. Their long exposure was decreased by 9.0 percent and their short exposure was decreased by 7.5 percent. *Non-reportable* participants, who accounted for 5.4 percent of total open interest, held net long positions; their long exposure was decreased by 2.7 percent and their short exposure was increased by 1.1 percent.

NYMEX Heating Oil combined open interest increased 4.5 percent in August. *Commercial* participants, who accounted for 59.8 percent of open interest, held net short positions; their long exposure was decreased by 1.8 percent and their short exposure was increased by 11.2 percent. *Non-commercial* participants, who accounted for 29.5 percent of open interest, held net long positions. Their long exposure was increased by 8.6 percent and their short exposure was decreased by 4.7 percent. *Non-reportable* participants, who accounted for 10.7 percent of total open interest, held net long positions; their long exposure was increased by 26.5 percent and their short exposure was decreased by 9.8 percent.

NYMEX RBOB Gasoline combined open interest increased 11.5 percent in August. *Commercial* participants, who accounted for 55.2 percent of open interest, held net short positions; their long exposure was increased by 4.5 percent and their short exposure was increased by 7.7 percent. *Non-commercial* participants, who accounted for 38.0 percent of open interest, held net long positions. Their long exposure was increased by 16.4 percent and their short exposure was increased by 23.5 percent. *Non-reportable* participants, who accounted for 6.8 percent of total open interest, held net long positions; their long exposure was increased by 20.2 percent and their short exposure was increased by 10.9 percent.

Agriculture

CBOT Corn combined open interest fell 6.3 percent in August. *Commercial* participants, who accounted for 43.8 percent of open interest, held net short positions; their long exposure was decreased by 7.9 percent and their short exposure was decreased by 2.6 percent. *Non-commercial* participants, who accounted for 43.9 percent of open interest, held net long positions. Their long exposure was decreased by 5.5 percent and their short exposure was decreased by 13.2 percent. *Non-reportable* participants, who accounted for 12.3 percent of total open interest, held net short positions; their long exposure was decreased by 4.5 percent and their short exposure was decreased by 1.1 percent.

CBOT Wheat combined open interest fell 9.4 percent in August. *Commercial* participants, who accounted for 45.2 percent of open interest, held net short positions; their long exposure was decreased by 4.1 percent and their short exposure was decreased by 6.9 percent. *Non-commercial* participants, who accounted for 46.6 percent of open interest, held net long positions. Their long exposure was decreased by 13.9 percent and their short exposure was decreased by 13.8 percent. *Non-reportable* participants, who accounted for 8.2 percent of total open interest, held net short positions; their long exposure was decreased by 4.4 percent and their short exposure was increased by 0.2 percent.

CBOT Soybeans combined open interest fell 0.8 percent in August. *Commercial* participants, who accounted for 41.2 percent of open interest, held net short positions; their long exposure was decreased by 6.2 percent and their short exposure was decreased by 3.8 percent. *Non-commercial* participants, who accounted for 51.2 percent of open interest, held net long positions. Their long exposure was increased by 1.2 percent and their short exposure was increased by 2.3 percent. *Non-reportable* participants, who accounted for 7.6 percent of total open interest, held net long positions; their long exposure was increased by 7.1 percent and their short exposure was increased by 4.4 percent.

CBOT Soybean Oil combined open interest increased 4.3 percent in August. *Commercial* participants, who accounted for 52.5 percent of open interest, held net short positions; their long exposure was decreased by 11.6 percent and their short exposure was increased by 7.9 percent. *Non-commercial* participants, who accounted for 38.8 percent of open interest, held net long positions. Their long exposure was increased by 19.7 percent and their short exposure was decreased by 0.6 percent. *Non-reportable* participants, who accounted for 8.6 percent of total open interest, held net long positions; their long exposure was increased by 40.7 percent and their short exposure was increased by 0.1 percent.

Soft Commodities

ICE Futures U.S. Sugar combined open interest increased 9.2 percent in August. *Commercial* participants, who accounted for 56.4 percent of open interest, held net short positions; their long exposure was increased by 13.8 percent and their short exposure was decreased by 7.4 percent. *Non-commercial* participants, who accounted for 33.8 percent of open interest, held net

long positions. Their long exposure was increased by 3.6 percent and their short exposure was increased by 51.3 percent. *Non-reportable* participants, who accounted for 9.8 percent of total open interest, held net short positions; their long exposure was increased by 9.0 percent and their short exposure was increased by 47.7 percent.

ICE Futures U.S. Coffee combined open interest fell 11.4 percent in August. *Commercial* participants, who accounted for 45.6 percent of open interest, held net long positions; their long exposure was decreased by 4.3 percent and their short exposure was decreased by 20.2 percent. *Non-commercial* participants, who accounted for 50.2 percent of open interest, held net short positions. Their long exposure was decreased by 19.0 percent and their short exposure was decreased by 3.8 percent. *Non-reportable* participants, who accounted for 4.2 percent of total open interest, held net short positions; their long exposure was increased by 3.1 percent and their short exposure was decreased by 5.9 percent.

ICE Futures U.S. Cocoa combined open interest increased 0.8 percent in August. *Commercial* participants, who accounted for 54.2 percent of open interest, held net short positions; their long exposure was decreased by 10.2 percent and their short exposure was increased by 1.3 percent. *Non-commercial* participants, who accounted for 41.0 percent of open interest, held net long positions. Their long exposure was increased by 13.5 percent and their short exposure was increased by 4.4 percent. *Non-reportable* participants, who accounted for 4.8 percent of total open interest, held net long positions; their long exposure was increased by 10.9 percent and their short exposure was decreased by 33.5 percent.

ICE Futures U.S. Cotton combined open interest increased 1.2 percent in August. *Commercial* participants, who accounted for 47.5 percent of open interest, held net short positions; their long exposure was decreased by 5.7 percent and their short exposure was increased by 8.2 percent. *Non-commercial* participants, who accounted for 46.6 percent of open interest, held net long positions. Their long exposure was increased by 6.5 percent and their short exposure was decreased by 6.0 percent. *Non-reportable* participants, who accounted for 5.8 percent of total open interest, held net long positions; their long exposure was increased by 9.3 percent and their short exposure was decreased by 3.3 percent.

Financials

CME 3-month Eurodollars combined open interest fell 2.4 percent in August. *Commercial* participants, who accounted for 50.5 percent of open interest, held net short positions; their long exposure was increased by 0.1 percent and their short exposure was decreased by 2.0 percent. *Non-commercial* participants, who accounted for 41.6 percent of open interest, held net long positions. Their long exposure was decreased by 5.3 percent and their short exposure was decreased by 4.7 percent. *Non-reportable* participants, who accounted for 7.9 percent of total open interest, held net short positions; their long exposure was increased by 0.7 percent and their short exposure was increased by 7.2 percent.

CME Euro-FX combined open interest fell 1.8 percent in August. *Commercial* participants, who accounted for 48.3 percent of open interest, held net long positions; their long exposure was decreased by 4.2 percent and their short exposure was increased by 44.2 percent. *Non-commercial* participants, who accounted for 35.9 percent of open interest, held net short positions. Their long exposure was decreased by 0.1 percent and their short exposure was decreased by 17.5 percent. *Non-reportable* participants, who accounted for 15.8 percent of total open interest, held net short positions; their long exposure was increased by 10.5 percent and their short exposure was decreased by 1.8 percent.

CBOT 10-year Treasury Notes combined open interest fell 12.3 percent in August. *Commercial* participants, who accounted for 62.1 percent of open interest, held net short

positions; their long exposure was decreased by 14.5 percent and their short exposure was decreased by 10.1 percent. *Non-commercial* participants, who accounted for 19.7 percent of open interest, held net long positions. Their long exposure was decreased by 20.5 percent and their short exposure was decreased by 25.5 percent. *Non-reportable* participants, who accounted for 18.2 percent of total open interest, held net long positions; their long exposure was increased by 9.8 percent and their short exposure was decreased by 3.1 percent.

CME S&P 500 combined open interest increased 2.2 percent in August. *Commercial* participants, who accounted for 65.6 percent of open interest, held net short positions; their long exposure was increased by 5.1 percent and their short exposure was increased by 5.9 percent. *Non-commercial* participants, who accounted for 9.7 percent of open interest, held net long positions. Their long exposure was decreased by 10.0 percent and their short exposure was decreased by 5.6 percent. *Non-reportable* participants, who accounted for 24.7 percent of total open interest, held net long positions; their long exposure was changed by less than 0.1 percent and their short exposure was decreased by 3.7 percent.

Metals

NYMEX Gold combined open interest increased 4.0 percent in August. *Commercial* participants, who accounted for 50.8 percent of open interest, held net short positions; their long exposure was decreased by 8.3 percent and their short exposure was increased by 8.4 percent. *Non-commercial* participants, who accounted for 41.9 percent of open interest, held net long positions. Their long exposure was increased by 10.4 percent and their short exposure was decreased by 2.0 percent. *Non-reportable* participants, who accounted for 7.3 percent of total open interest, held net long positions; their long exposure was increased by 20.8 percent and their short exposure was decreased by 16.8 percent.

NYMEX Silver combined open interest fell 1.5 percent in August. *Commercial* participants, who accounted for 45.8 percent of open interest, held net short positions; their long exposure was decreased by 12.9 percent and their short exposure was increased by 13.9 percent. *Non-commercial* participants, who accounted for 42.7 percent of open interest, held net long positions. Their long exposure was increased by 5.9 percent and their short exposure was decreased by 19.0 percent. *Non-reportable* participants, who accounted for 11.5 percent of total open interest, held net long positions; their long exposure was increased by 2.3 percent and their short exposure was decreased by 11.8 percent.

NYMEX Copper combined open interest increased 1.7 percent in August. *Commercial* participants, who accounted for 48.2 percent of open interest, held net long positions; their long exposure was decreased by 4.7 percent and their short exposure was increased by 11.1 percent. *Non-commercial* participants, who accounted for 41.8 percent of open interest, held net short positions. Their long exposure was increased by 9.7 percent and their short exposure was decreased by 2.5 percent. *Non-reportable* participants, who accounted for 10.0 percent of total open interest, held net short positions; their long exposure was increased by 11.8 percent and their short exposure was decreased by 11.1 percent.

NYMEX Platinum combined open interest increased 9.2 percent in August. *Commercial* participants, who accounted for 44.0 percent of open interest, held net short positions; their long exposure was decreased by 15.1 percent and their short exposure was increased by 37.2 percent. *Non-commercial* participants, who accounted for 48.0 percent of open interest, held net long positions. Their long exposure was increased by 14.8 percent and their short exposure was decreased by 30.4 percent. *Non-reportable* participants, who accounted for 7.9 percent of total open interest, held net long positions; their long exposure was increased by 17.0 percent and their short exposure was decreased by 26.1 percent.

Livestock

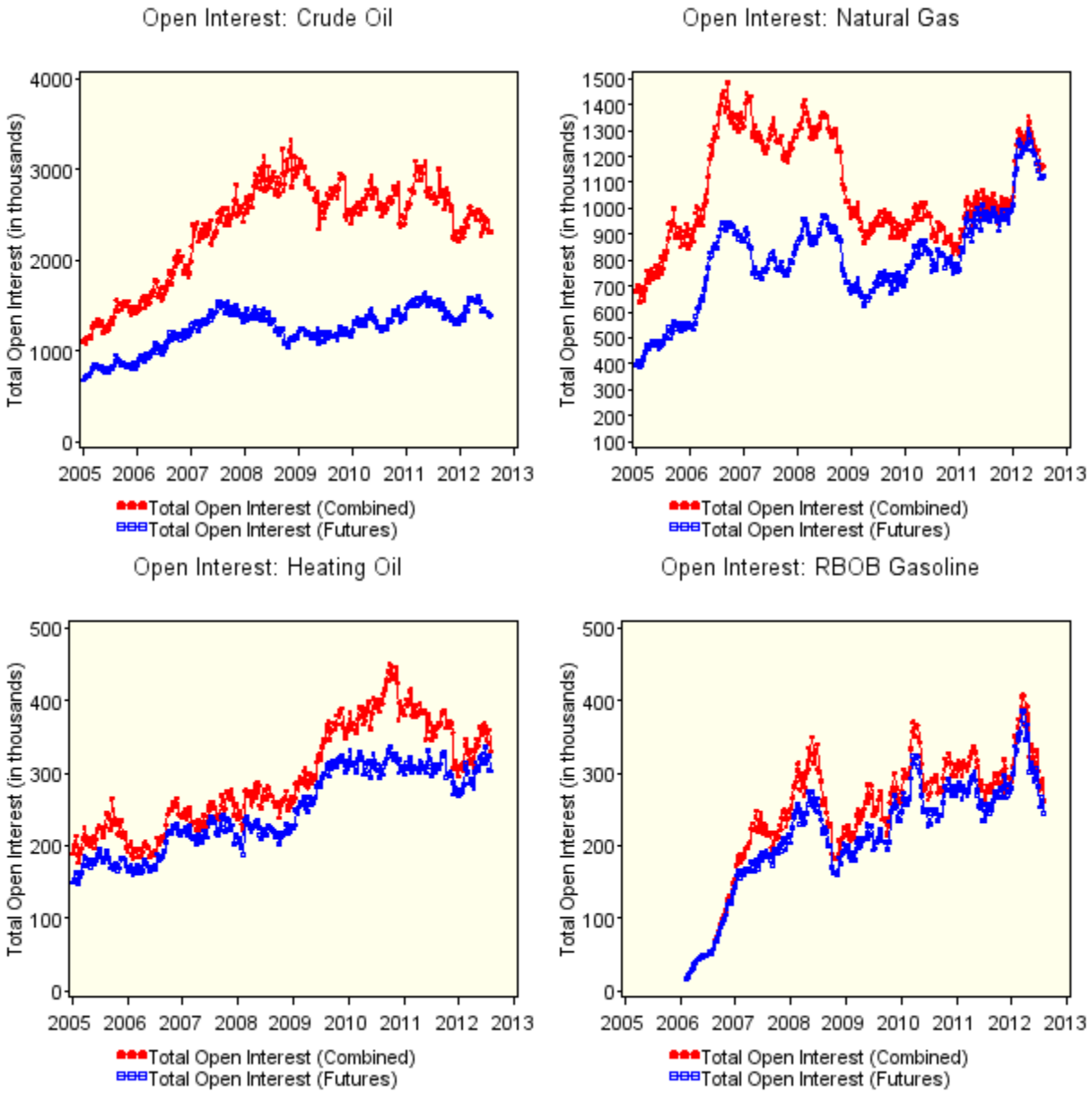
CME Lean Hogs combined open interest increased 4.5 percent in August. *Commercial* participants, who accounted for 35.3 percent of open interest, held net short positions; their long exposure was decreased by 1.1 percent and their short exposure was decreased by 9.3 percent. *Non-commercial* participants, who accounted for 52.8 percent of open interest, held net long positions. Their long exposure was increased by 5.5 percent and their short exposure was increased by 20.6 percent. *Non-reportable* participants, who accounted for 12.0 percent of total open interest, held net short positions; their long exposure was increased by 20.5 percent and their short exposure was decreased by 0.8 percent.

CME Live Cattle combined open interest fell 9.9 percent in August. *Commercial* participants, who accounted for 42.2 percent of open interest, held net short positions; their long exposure was decreased by 3.4 percent and their short exposure was decreased by 4.2 percent. *Non-commercial* participants, who accounted for 46.5 percent of open interest, held net long positions. Their long exposure was decreased by 15.2 percent and their short exposure was decreased by 17.3 percent. *Non-reportable* participants, who accounted for 11.3 percent of total open interest, held net short positions; their long exposure was decreased by 2.3 percent and their short exposure was decreased by 3.5 percent.

Notes:

1. Percentage changes are calculated using data representing last Tuesday of the previous month and last Tuesday of the current month.
2. Percentages of open interest held by the commercial, non-commercial, and non-reportable traders reflect the averages of the percentages of long and short positions held by these groups of traders.
3. The share of Commercial, Non-Commercial, and Non-Reportable positions may not sum up to 100 due to rounding errors.

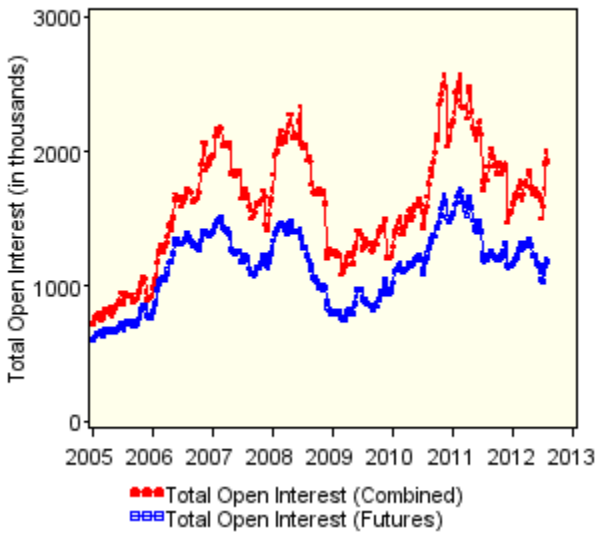
Figure 1: Energy



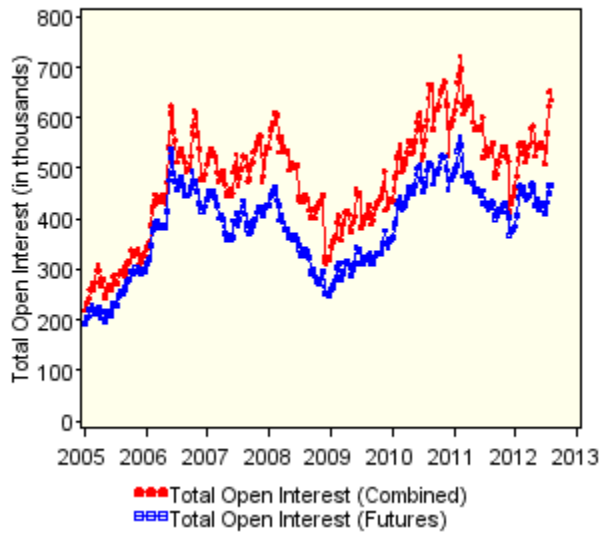
Energy: Open Interest (in thousands)						
Open Interest			Change from Last			
8/28/2012			Month		Year	
Crude Oil	Futures	1511.3	↑	115.6	↑	16.5
	Futures & Options	2468.9	↑	146.8	↓	-269.5
Natural Gas	Futures	1080.4	↓	-46.3	↑	105.2
	Futures & Options	1113.7	↓	-50.8	↑	96.6
Heating Oil	Futures	317.3	↑	14.1	↑	6.2
	Futures & Options	345.0	↑	15.0	↓	-20.7
RBOB Gasoline	Futures	275.2	↑	29.4	↑	23.6
	Futures & Options	292.7	↑	30.3	↑	17.7

Figure 2: Agriculture

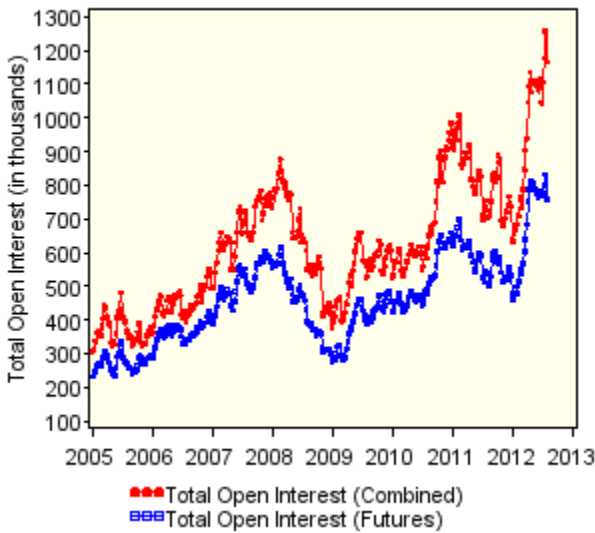
Open Interest: Corn



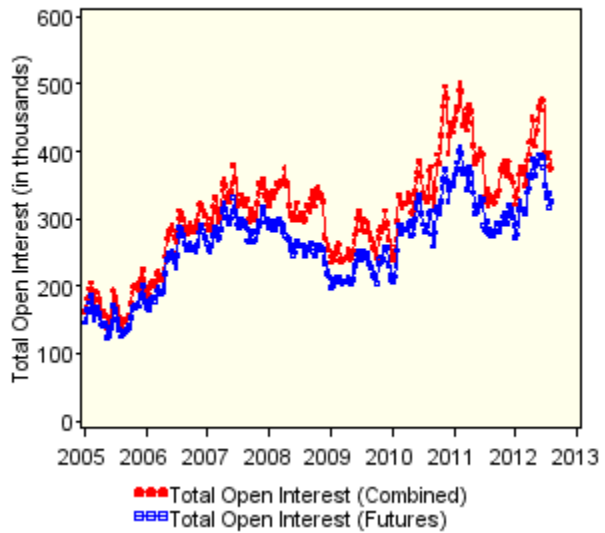
Open Interest: Wheat



Open Interest: Soybeans



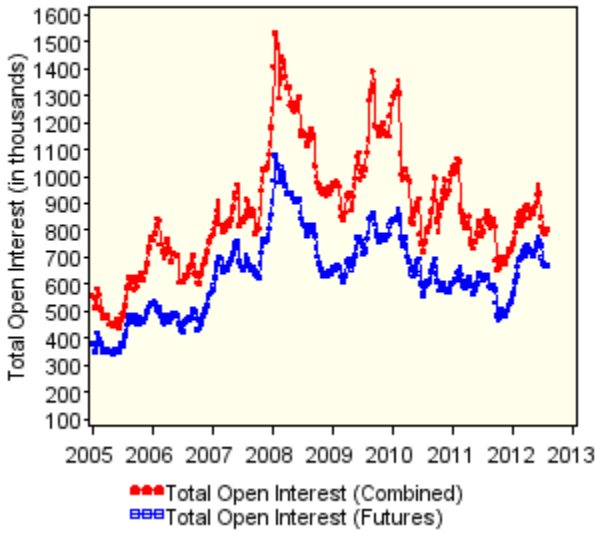
Open Interest: Soybean Oil



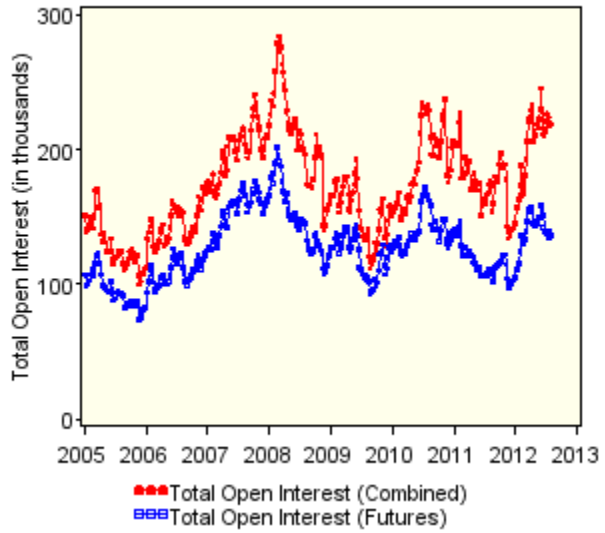
Agriculture: Open Interest (in thousands)					
Open Interest			Change from Last		
8/28/2012			Month	Year	
Corn	Futures	1210.1	↑ 20.0	↓	-27.1
	Futures & Options	1811.0	↓ -121.5	↓	-154.6
Wheat	Futures	443.1	↓ -24.5	↑	33.4
	Futures & Options	576.1	↓ -59.6	↑	84.7
Soybeans	Futures	742.1	↓ -18.3	↑	162.1
	Futures & Options	1156.5	↓ -9.3	↑	337.3
Soybean Oil	Futures	336.2	↑ 9.9	↑	54.7
	Futures & Options	391.2	↑ 16.2	↑	67.8

Figure 3: Soft Commodities

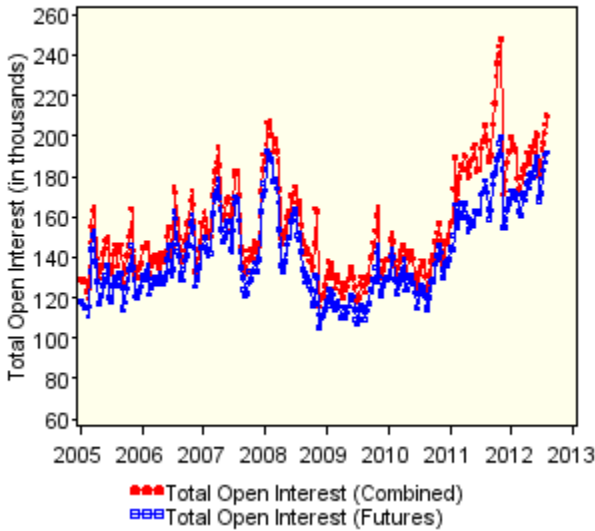
Open Interest: Sugar



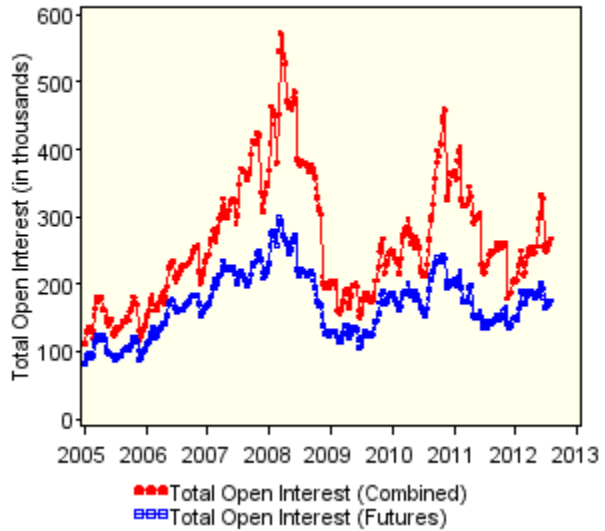
Open Interest: Coffee



Open Interest: Cocoa



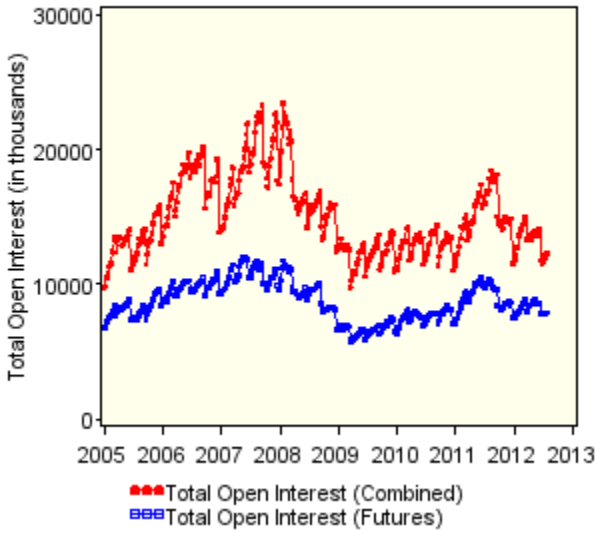
Open Interest: Cotton



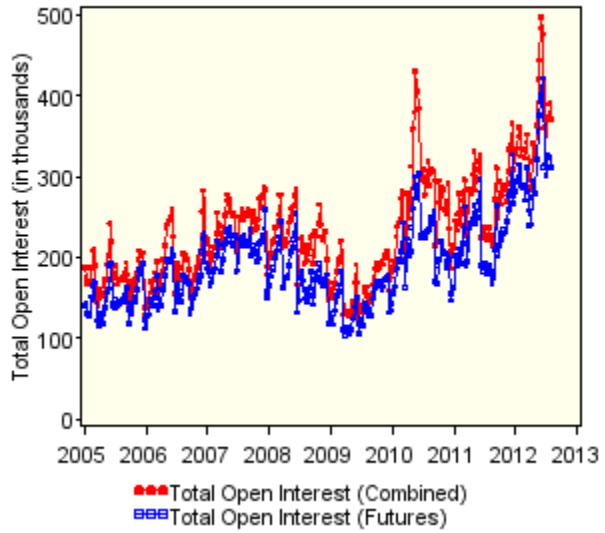
Soft Commodities: Open Interest (in thousands)						
Open Interest			Change from Last			
8/28/2012			Month		Year	
Sugar	Futures	723.4	↑	51.6	↑	125.7
	Futures & Options	878.3	↑	74.0	↑	33.9
Coffee	Futures	136.2	↓	0.0	↑	30.0
	Futures & Options	194.2	↓	-25.1	↑	20.9
Cocoa	Futures	188.5	↓	-3.6	↑	27.9
	Futures & Options	212.0	↑	1.6	↑	24.5
Cotton	Futures	179.8	↑	3.0	↑	32.1
	Futures & Options	271.4	↑	3.3	↑	20.8

Figure 4: Financials

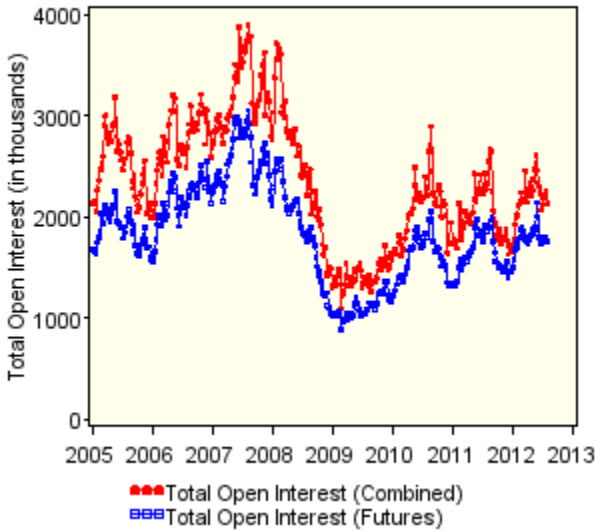
Open Interest: Three Month EuroDollars



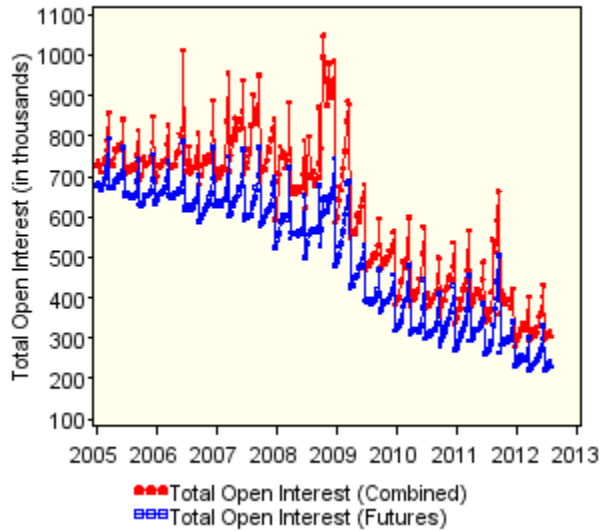
Open Interest: Euro FX



Open Interest: Ten Year Treasury Notes

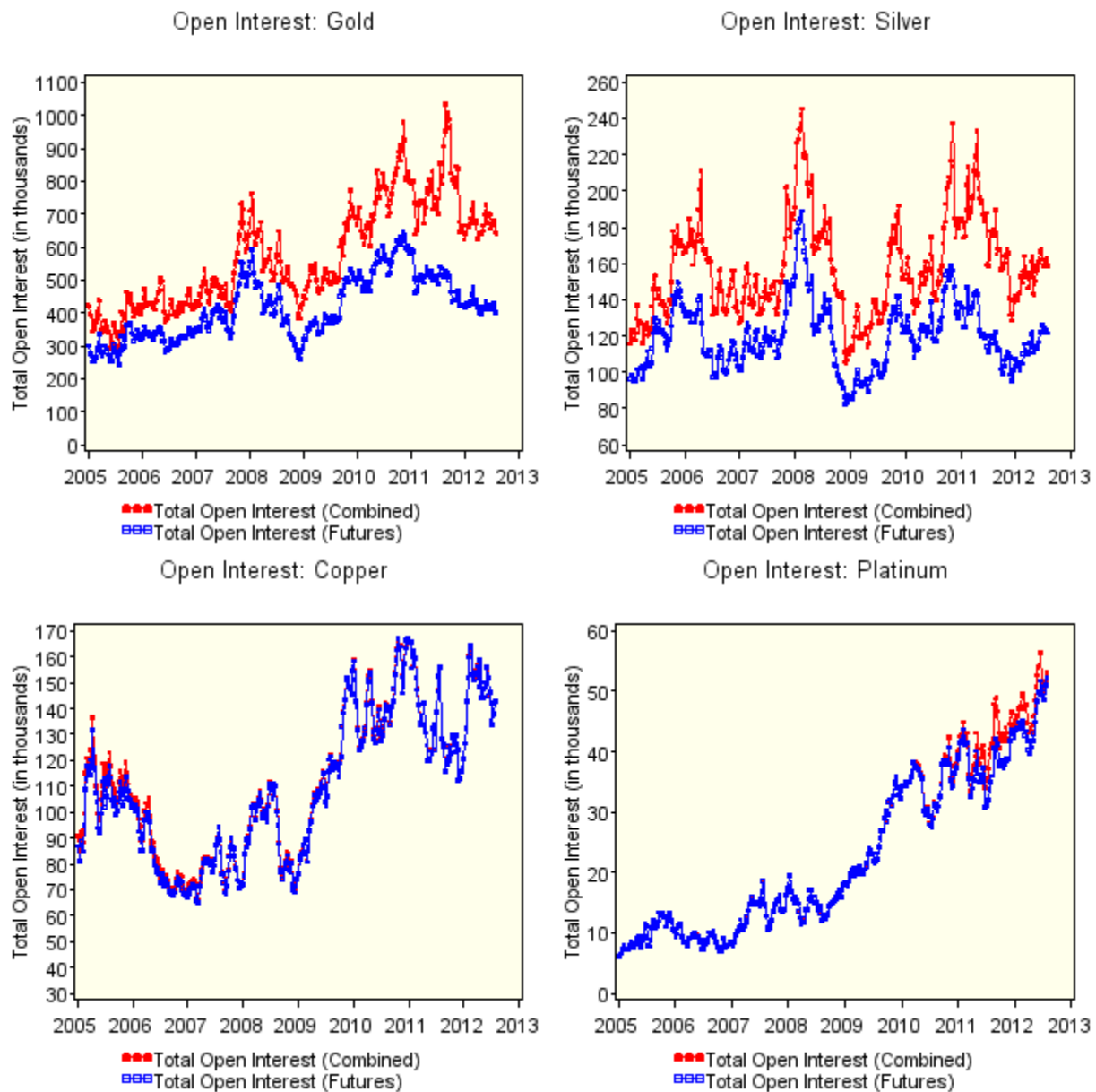


Open Interest: S&P 500 Stock Index



Financials: Open Interest (in thousands)					
Open Interest			Change from Last		
8/28/2012			Month	Year	
Three Month EuroDollars	Futures	7913.3	↓ -20.8	↓	1760.1
	Futures & Options	12018.7	↓ -291.4	↓	5682.9
Euro FX	Futures	311.9	↑ 0.5	↑	132.8
	Futures & Options	364.5	↓ -6.7	↑	136.1
Ten Year Treasury Notes	Futures	1604.9	↓ -152.8	↓	-406.9
	Futures & Options	1872.5	↓ -262.6	↓	-385.9
S&P 500 Stock Index	Futures	237.3	↑ 6.8	↓	-162.6
	Futures & Options	310.9	↑ 6.5	↓	-221.4

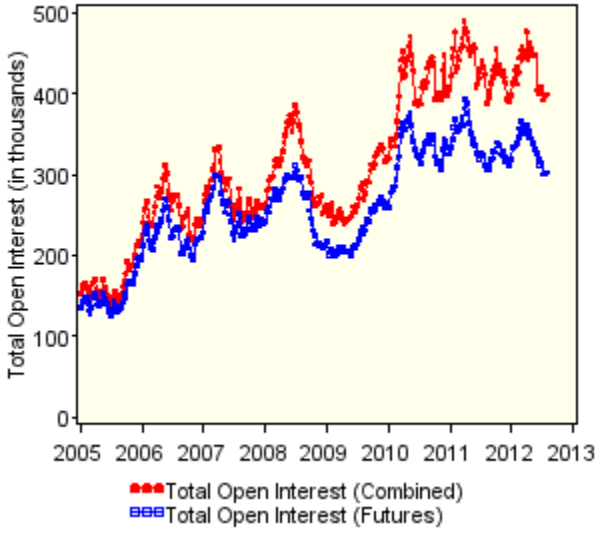
Figure 5: Metals



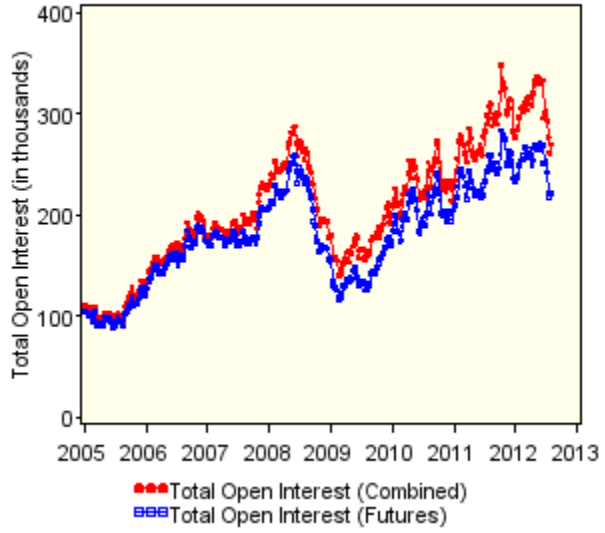
Metals: Open Interest (in thousands)					
Open Interest			Change from Last		
8/28/2012			Month	Year	
Gold	Futures	426.6	↑ 23.2	↓	-82.8
	Futures & Options	670.2	↑ 25.9	↓	-284.8
Silver	Futures	121.8	↓ 0.0	↑	9.4
	Futures & Options	156.6	↓ -2.4	↓	-8.7
Copper	Futures	145.2	↑ 2.4	↑	29.4
	Futures & Options	145.3	↑ 2.5	↑	29.3
Platinum	Futures	54.5	↑ 2.2	↑	15.4
	Futures & Options	58.0	↑ 4.9	↑	12.2

Figure 6: Livestock

Open Interest: Live Cattle



Open Interest: Lean Hogs



Livestock: Open Interest (in thousands)						
Open Interest			Change from Last Year			
8/28/2012			Month	Year		
Live Cattle	Futures	284.5	↓	-19.0	↓	-27.4
	Futures & Options	360.5	↓	-39.6	↓	-43.6
Lean Hogs	Futures	230.2	↑	8.5	↓	-19.6
	Futures & Options	282.6	↑	12.1	↓	-13.1

Net Position of Commercials, Non-commercials and Non-reportable (in thousands, net long:+, net short:-)
)

Futures-Only

	Commercials		Non-commercials		Non-reportable	
	August	Month Ago	August	Month Ago	August	Month Ago
Crude Oil	-253.2	-178.4	249.3	174.4	3.9	4.0
Natural Gas	47.5	40.6	-78.9	-75.4	31.3	34.8
Heating Oil	-31.1	-6.8	11.3	-0.9	19.7	7.7
RBOB Gasoline	-81.9	-73.2	69.4	63.9	12.5	9.3
Corn	-268.0	-208.6	337.5	281.4	-69.5	-72.8
Wheat	-38.9	-43.0	53.6	54.9	-14.7	-11.9
Soybeans	-227.9	-243.5	224.4	243.1	3.5	0.4
Soybean Oil	-43.8	-13.0	31.5	11.8	12.3	1.2
Sugar	-68.4	-152.4	75.1	134.3	-6.7	18.1
Coffee	15.3	1.5	-14.7	-0.2	-0.5	-1.3
Cocoa	-31.1	-18.4	24.0	15.7	7.1	2.6
Cotton	-3.2	10.8	0.5	-11.6	2.7	0.7
3-month Eurodollars	-651.9	-769.5	728.6	785.8	-76.7	-16.3
Euro-FX	127.6	172.7	-101.6	-139.0	-26.1	-33.7
10-year Treasury Notes	-54.8	29.5	50.7	2.1	4.1	-31.6
S&P 500	-2.0	0.0	0.9	2.6	1.1	-2.6
Gold	-203.6	-156.0	158.5	126.1	45.1	29.9
Silver	-38.6	-21.4	28.6	13.0	9.9	8.3
Copper	14.0	24.1	-8.1	-14.7	-5.9	-9.3
Platinum	-32.7	-20.4	28.7	18.3	4.0	2.2
Live Cattle	2.2	4.0	18.8	17.2	-21.0	-21.2
Lean Hogs	-2.7	-12.6	9.9	23.5	-7.2	-10.8

Net Position of Commercials, Non-commercials and Non-reportable (in thousands, net long:+, net short:-)

Futures and Futures-Equivalent Options Contracts

	Commercials		Non-commercials		Non-reportable	
	August	Month Ago	August	Month Ago	August	Month Ago
Crude Oil	-301.2	-224.0	298.6	219.7	2.6	4.3
Natural Gas	47.3	39.7	-81.2	-76.2	33.9	36.5
Heating Oil	-34.7	-8.7	14.2	0.9	20.6	7.8
RBOB Gasoline	-83.2	-74.0	70.8	64.6	12.4	9.4
Corn	-271.1	-239.9	354.8	318.1	-83.7	-78.2
Wheat	-36.4	-46.9	52.4	60.9	-15.9	-14.0
Soybeans	-240.0	-240.2	236.7	239.3	3.2	0.9
Soybean Oil	-51.1	-10.4	38.0	9.0	13.0	1.4
Sugar	-70.9	-168.9	76.9	153.0	-6.0	15.9
Coffee	16.4	0.4	-15.9	0.8	-0.5	-1.2
Cocoa	-29.6	-16.4	22.4	13.9	7.2	2.6
Cotton	-31.9	-14.2	29.7	13.8	2.3	0.3
3-month Eurodollars	-734.4	-872.9	819.2	896.6	-84.8	-23.6
Euro-FX	133.6	177.7	-104.0	-142.6	-29.6	-35.1
10-year Treasury Notes	-55.2	4.4	44.5	26.7	10.7	-31.1
S&P 500	-0.4	1.0	0.2	1.7	0.2	-2.7
Gold	-216.8	-160.8	167.1	128.8	49.6	32.0
Silver	-41.9	-23.0	30.9	14.2	11.0	8.8
Copper	14.0	24.1	-8.1	-14.7	-5.9	-9.4
Platinum	-33.7	-20.6	29.6	18.5	4.0	2.2
Live Cattle	-15.3	-17.1	41.2	44.3	-25.9	-27.1
Lean Hogs	-13.4	-23.3	25.1	40.1	-11.7	-16.8