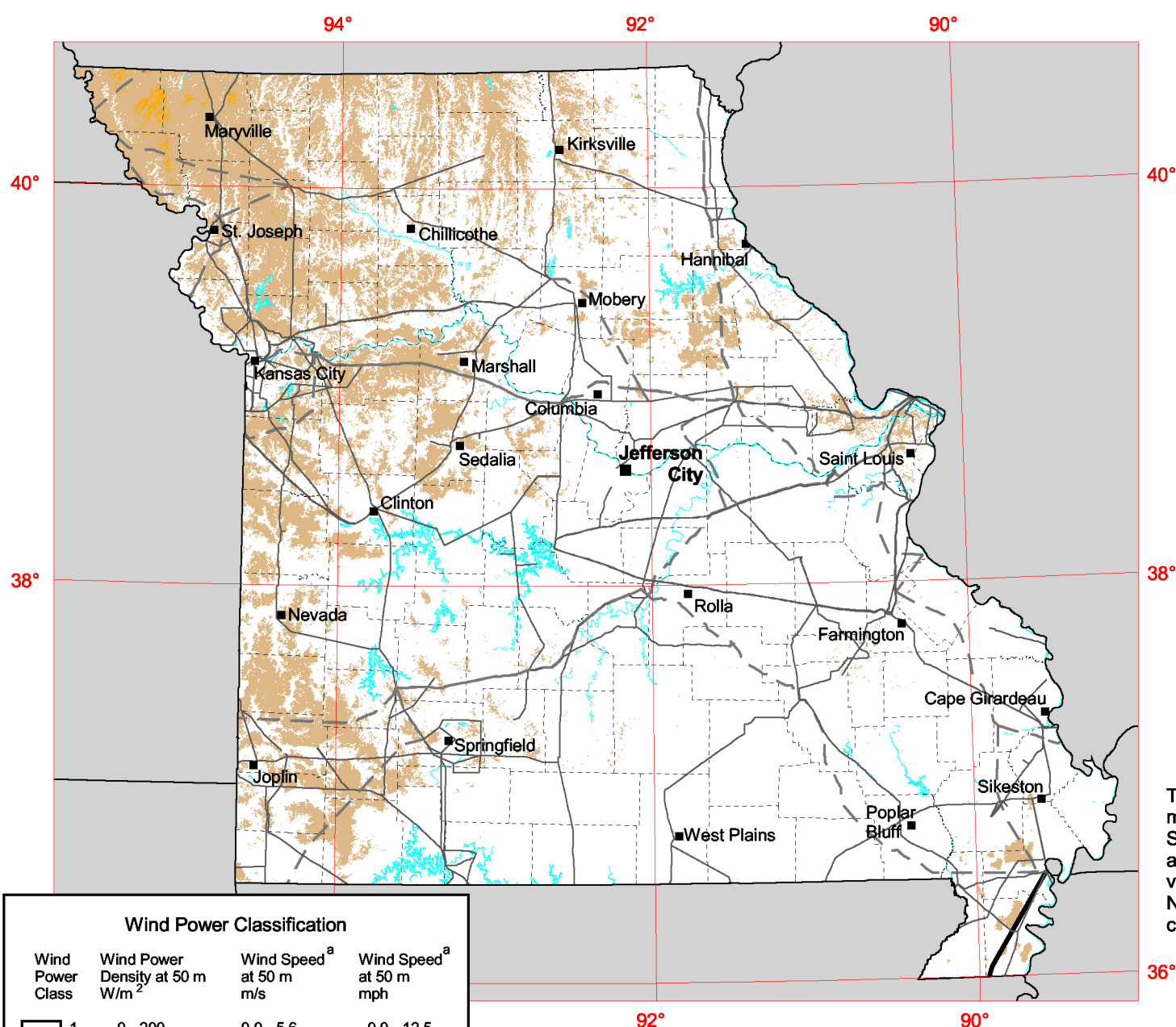


# Missouri 50 m Wind Power



**Transmission Line\***  
Voltage (kV)

- 115 - 161
- - - 345
- 500

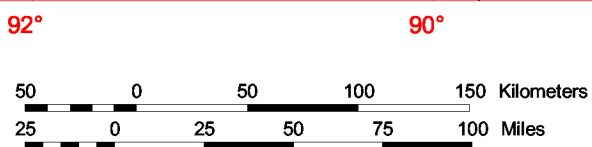
\* Source: POWERmap, ©2004 Platts, a Division of the McGraw-Hill Companies

The annual wind power estimates for this map were produced by TrueWind Solutions using their Mesomap system and historical weather data. It has been validated with available surface data by NREL and wind energy meteorological consultants.

**Wind Power Classification**

Wind Power Class	Wind Power Density at 50 m $W/m^2$	Wind Speed <sup>a</sup> at 50 m m/s	Wind Speed <sup>a</sup> at 50 m mph
1	0 - 200	0.0 - 5.6	0.0 - 12.5
2	200 - 300	5.6 - 6.4	12.5 - 14.3
3	300 - 400	6.4 - 7.0	14.3 - 15.7

<sup>a</sup> Wind speeds are based on a Weibull k value of 2.0



U.S. Department of Energy  
National Renewable Energy Laboratory