



NTSB National Transportation Safety Board

*Office of Railroad, Pipeline and
Hazardous Materials Safety*

BLET
Philadelphia, PA

Member Debbie Hersman

July 1, 2009

NTSB

- Independent Federal Agency
- 5-Member Board
 - President appointed, Senate confirmed
- 400 Staff
- Investigates accidents in all modes of transportation
- Determines probable cause
- Issues/Implements recommendations

Safety Recommendations

Issued Since 1967

TOTAL = 12,536

Pipeline 1225 (9.8%)



Railroad 2053
(16.4%)



Marine 2307
(18.4%)



Aviation
4653
(37.1%)



Intermodal 229 (1.8%)



Highway 2069 (16.5%)



November 2006

Selection of Rail Accidents

- We launch on about 10 accidents each year
- 13 railroad investigators ~ 2 teams
 - Investigator-In-Charge
 - Signals
 - Operations
 - Track
 - Human Performance
 - Mechanical
 - Hazardous Materials
 - Event Recorders

Selection of Rail Accidents

Safety Issues

- Passenger Trains
- Fatalities (Public/Employee)
- Hazardous Material Releases
- Trends
 - Track
 - Equipment
 - Operation

All Open Railroad Investigations

Date	Location	Property
June 22, 2009	Washington, DC	Washington Metropolitan Area Transit Authority
June 19, 2009	Cherry Valley, Illinois	Canadian National Railway
May 10, 2009	Albany, New York	CSX
May 8, 2009	Boston, Massachusetts	Massachusetts Bay Transportation Authority
February 3, 2009	Oakland, California	Bay Area Rapid Transit
November 28, 2008	Miami, Florida	Miami Airport Shuttle
November 20, 2008	Rialto, California	Metrolink/BNSF
September 12, 2008	Chatsworth, California	Metrolink/Union Pacific
June 14, 2008	San Francisco, California	San Francisco Municipal Railway
May 28, 2008	Newton, Massachusetts	Massachusetts Bay Transportation Authority
May 28, 2008	Chicago, Illinois	Chicago Transit Authority
April 1, 2008	Walbridge, Ohio	CSX
March 13, 2008	Providence, Rhode Island	Amtrak
January 16, 2007	Shepherdsville, Kentucky	CSX
November 9, 2006	Baxter, California	Union Pacific

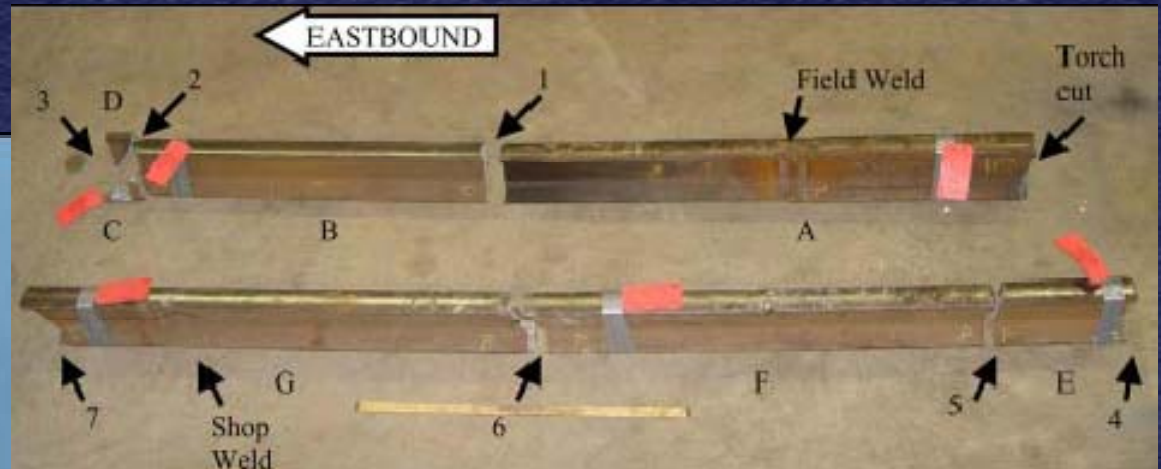
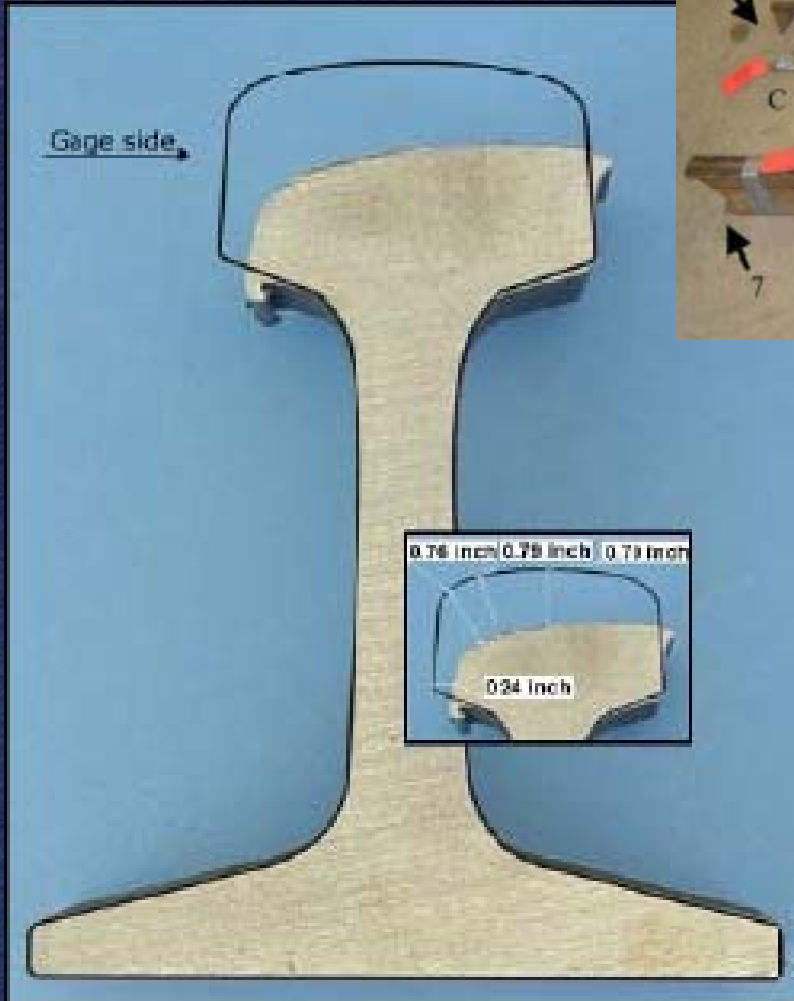
New Brighton, PA

Oct. 20, 2006







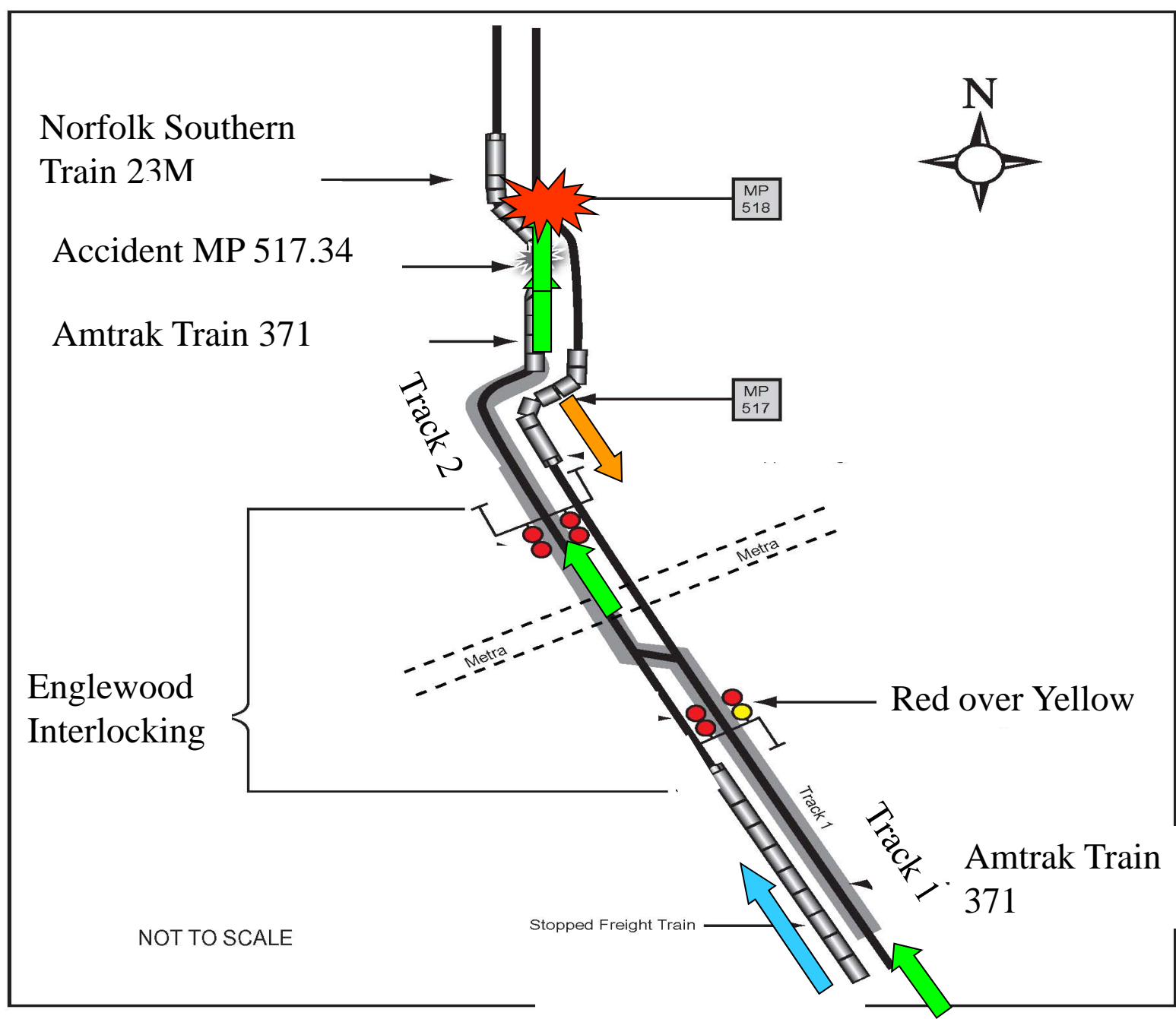




Chicago, IL

Nov. 30, 2007







Different Signal Indications

- Norfolk Southern - *Restricting*



- Be prepared to stop in one-half the range of vision
- Expect the track to be occupied

- Amtrak Terminal - *Slow Approach*



- Stop at the next signal
- Expect a clear track



Crew seats



8

AMTRAK

AMTRAK

INDIA

28

Chatsworth, CA Sept. 12, 2008





Metrolink Train



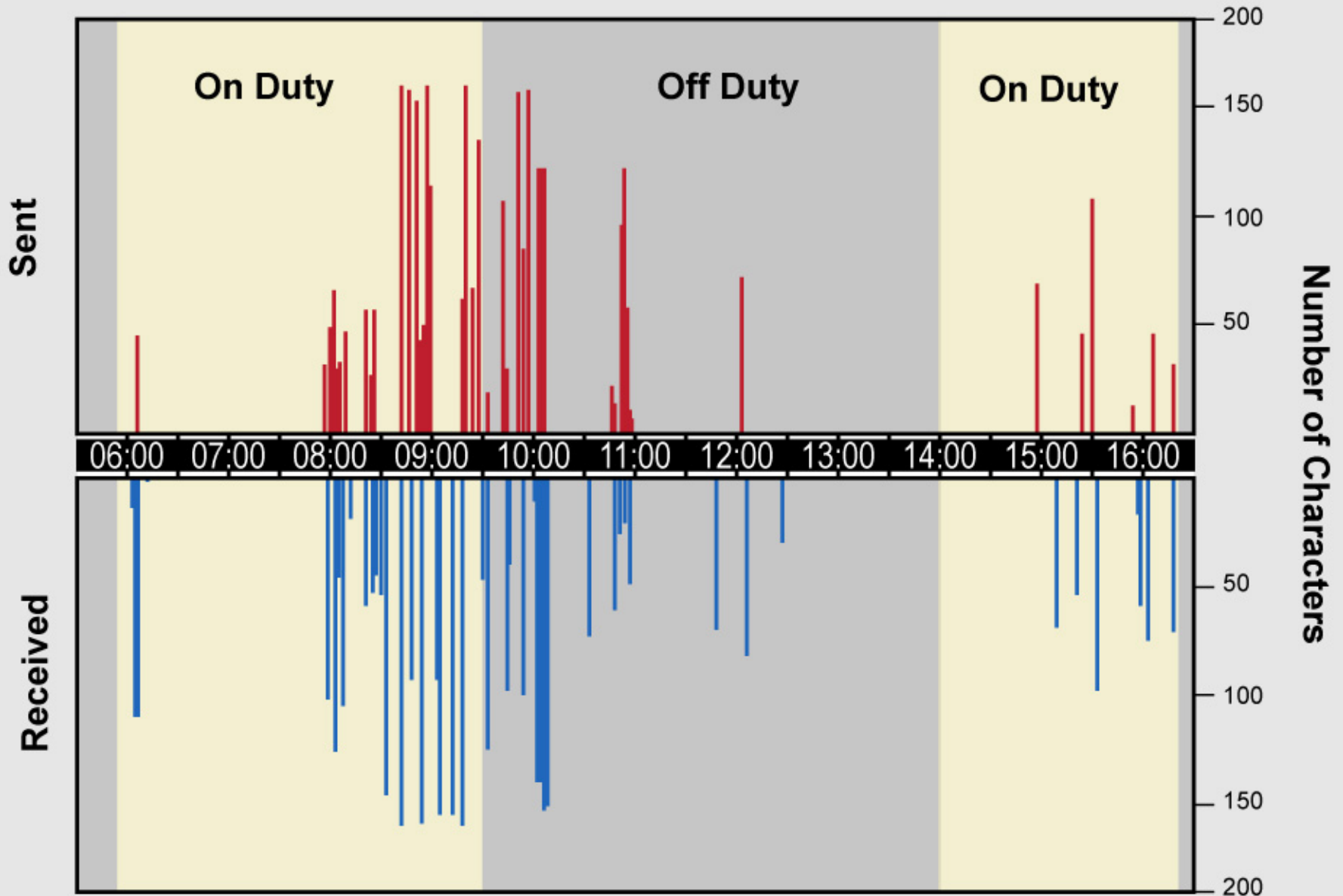
09/13/2008 13:27





Animation

Metrolink Engineer's Text Messages





NTSB

www.nts.gov