

Sustaining the Beauty & the Bounty of the Oceans

GRAND CHALLENGES FOR SCIENCE AND SOCIETY



Jane Lubchenco, Ph.D.

Under Secretary of Commerce for Oceans and Atmosphere
& NOAA Administrator

University of California at Davis
January 11, 2012



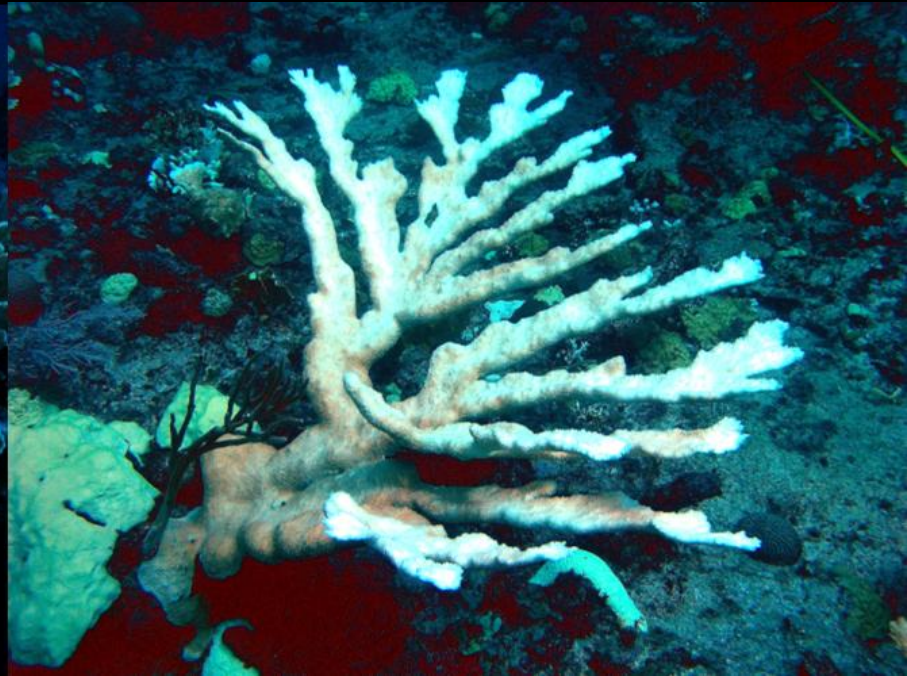


FAILURE

UNDERSTANDING

GOVERNANCE

CHANGING ECOSYSTEMS



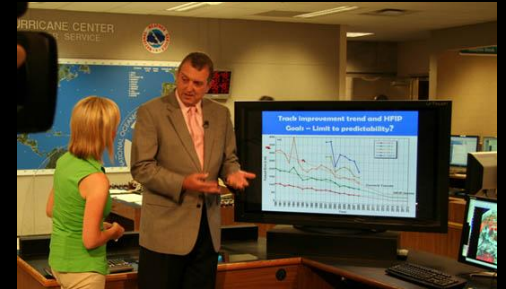
ROLE FOR SCIENTISTS

Make science...

UNDERSTANDABLE

RELEVANT

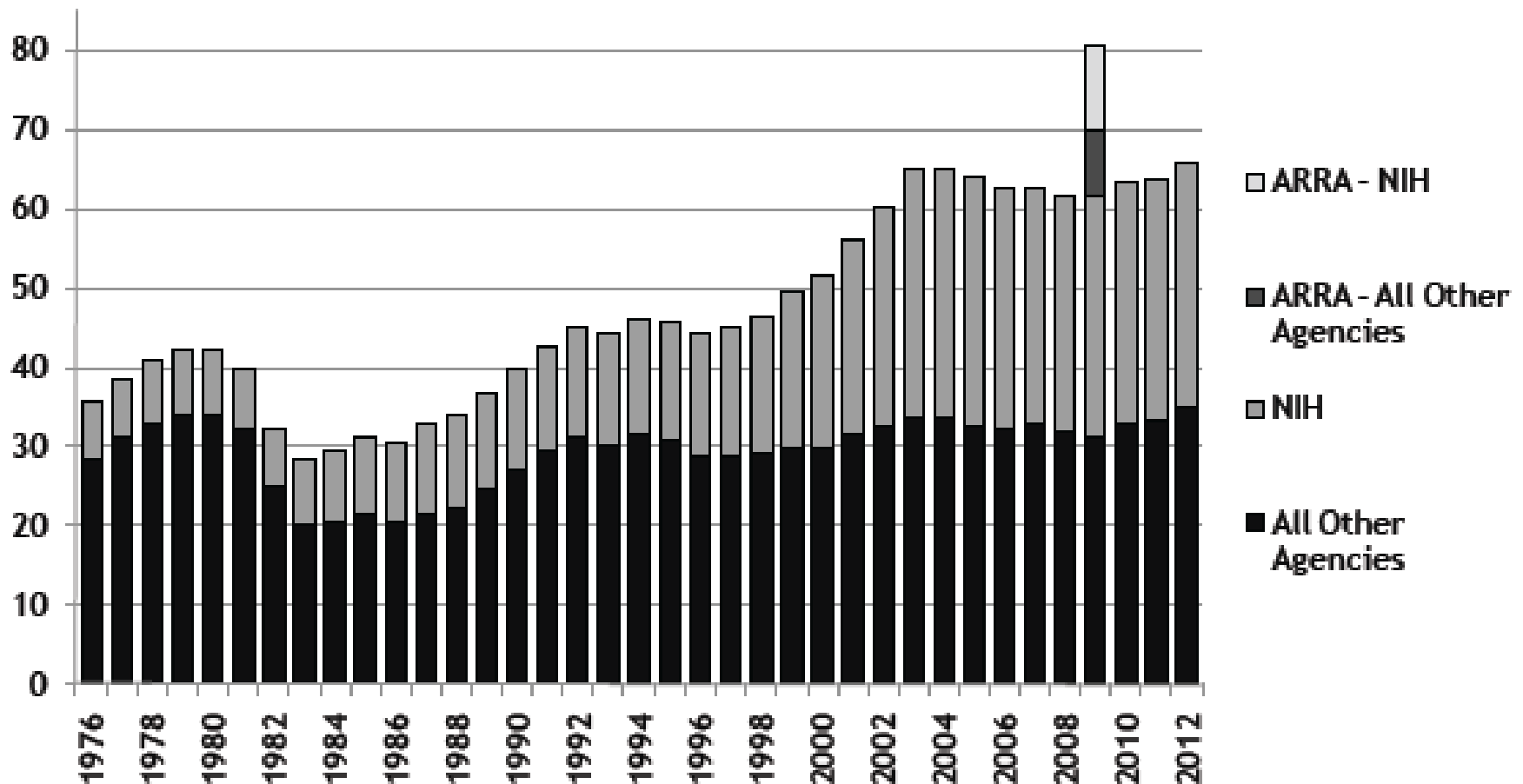
CREDIBLE





Trends in Nondefense R&D by Agency

in billions of constant FY 2011 dollars



Source: AAAS Report: Research & Development series.
 FY 2011 and FY 2012 figures are latest estimates.
 1976-1994 figures are NSF data on obligations in the Federal Funds survey.
 © 2011 AAAS



Europe's Top Chefs Push for Sustainable Seafood

By JEFFREY T. IVERSON / PARIS Sunday, Dec. 26, 2010

Related

Photos



Scenes from the Tuna Trade

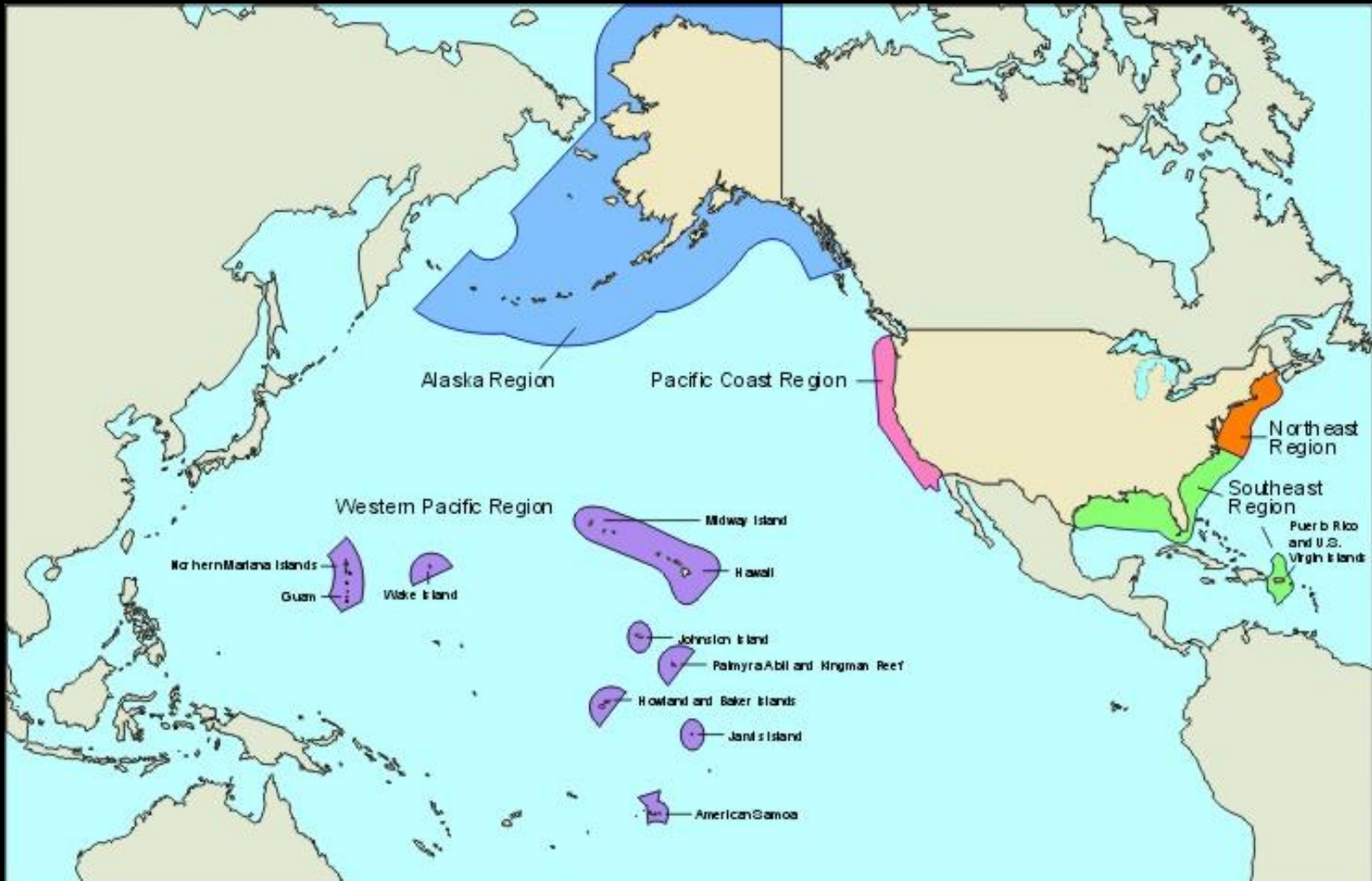
Photos



Pieces of fish sold as "Mediterranean bluefin tuna" are seen during a protest action of Greenpeace at a market in Bordeaux, southwestern France

Olivier Pon / Reuters

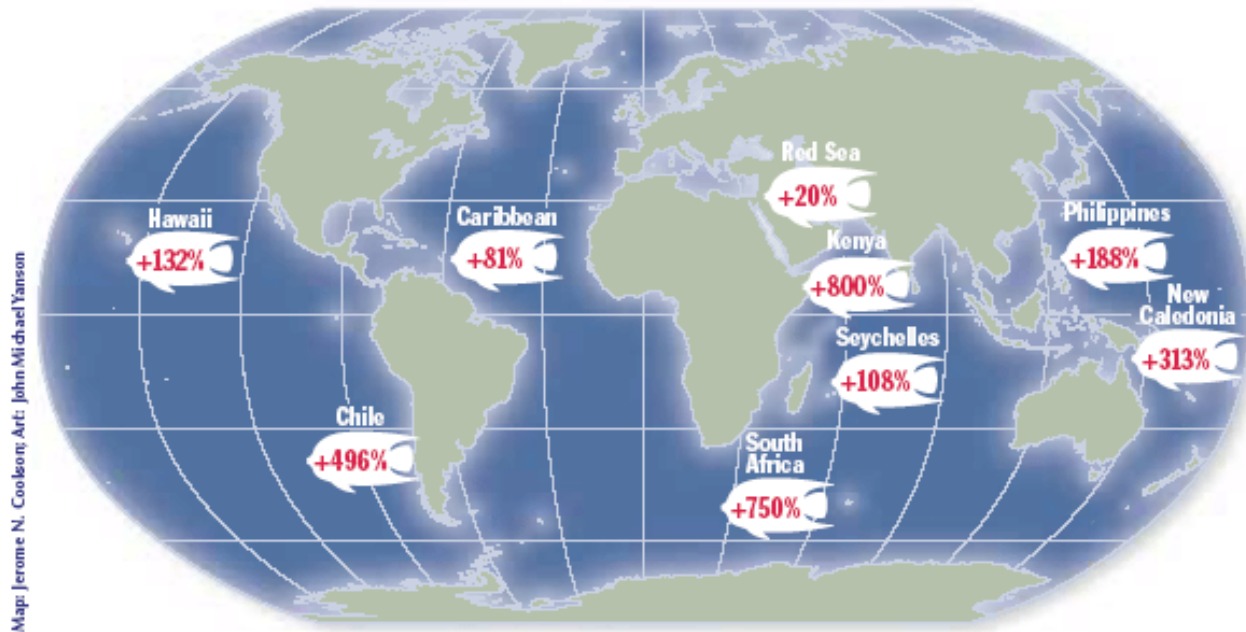
U.S. EEZ



Make 20% of our oceans “FISH BANKS”

Marine Reserves Increase Fish Biomass

Around the world, marine reserves have demonstrated the ability to increase fish biomass inside their borders. In most reserves studied, fish biomass doubled within five years. The larger fish found within reserves also produce more eggs. For example, ling cod within a reserve in Washington State produced 20 times more eggs per unit area than cod outside the reserve (Palumbi, 2003).



Source: Data are from 32 studies summarized by Halpern (2003) that were published in peer-reviewed journals.

IMAGE FROM www.pewocean.com

Harvard Business Review’s “List of Audacious Ideas for Solving the World’s Problems” 2012

NATIONAL OCEAN POLICY

GOVERNANCE



THE WHITE HOUSE COUNCIL ON ENVIRONMENTAL QUALITY

*Final Recommendations
Of The
Interagency Ocean Policy
Task Force
July 19, 2010*



nature

International weekly journal of science

AS THE CURRENT
BUDGET CRISIS
UNFOLDS, THE
EROSION
OF MISSION-
ORIENTED RESEARCH
IS LIKELY TO
ACCELERATE.

David Sarewitz
January 4, 2011



www.noaa.gov