

Florida's Shipwreck Preserves: A Tool for Public Archaeology and Cultural Resource Management

Della Scott-Ireton, PhD, RPA

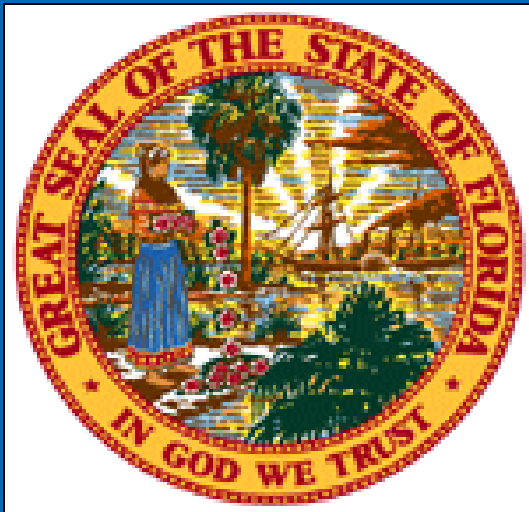


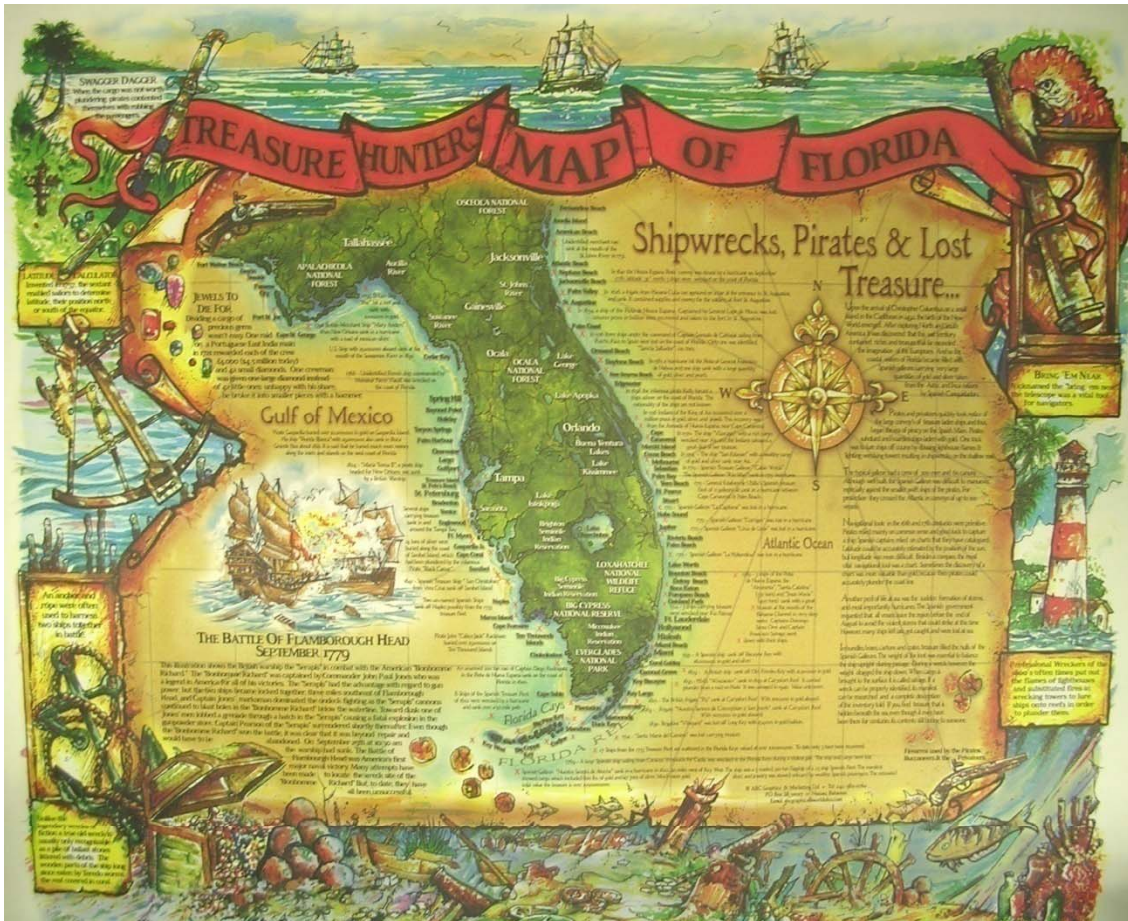
FLORIDA PUBLIC
ARCHAEOLOGY
NETWORK



University of
West Florida

A program of the Florida Bureau of Archaeological Research





Spanish treasure and Pirate booty!!

“Museums in the Sea”

Preserve Concept Goals

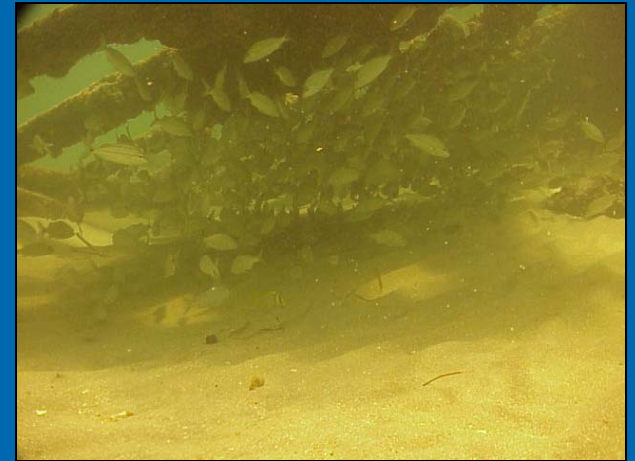
- Protect and preserve the resource.
- Educate the public about the importance of shipwrecks as part of the maritime past
- Provide a means of education through recreation.
- Promote heritage tourism.



Biological Importance of Shipwrecks

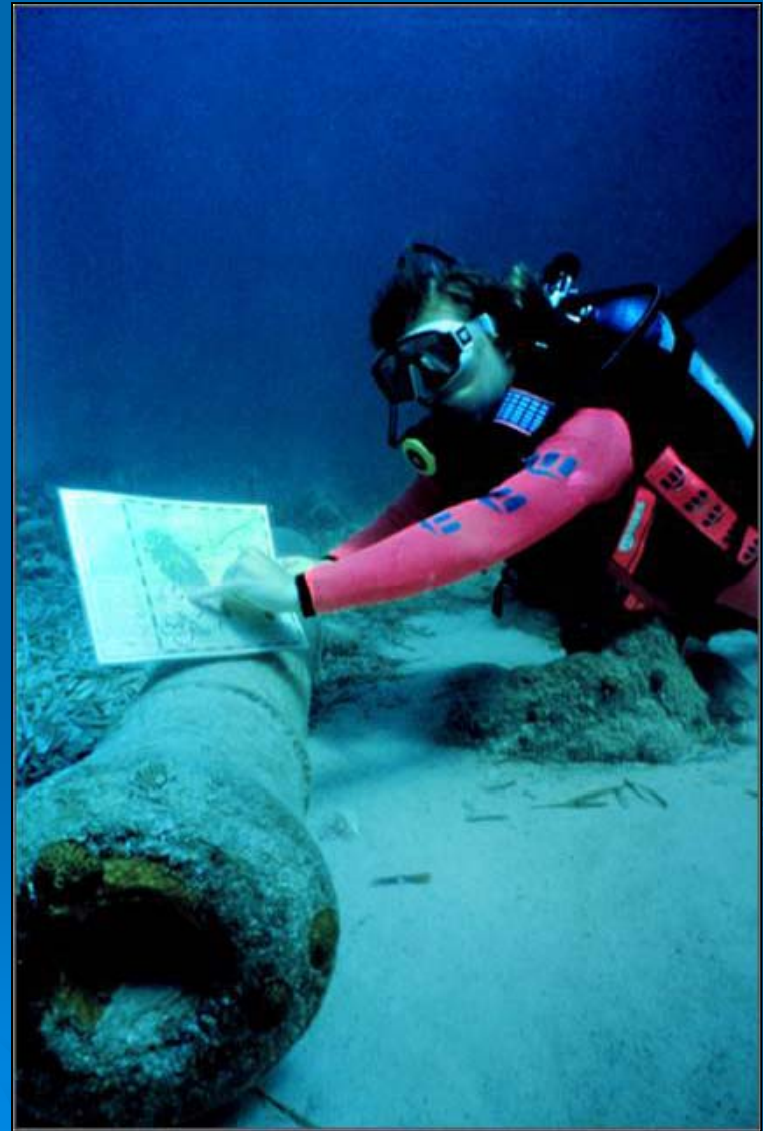


artificial reefs
shelter for juveniles
substrate for
invertebrates



Preserve Process

- Nomination by public
- Inspection to meet criteria
- Historical research to verify identity
- Archaeological documentation
- Biological survey
- Public proposal
- Preparation of interpretive literature
- Placement of plaque and exhibit
- Nomination to National Register
- Cooperative local management and promotion



Community Support and Involvement



Local
Management
and
Protection

Ship paintings courtesy William Trotter

Florida's Shipwreck PRESERVES

USS MASSACHUSETTS

1 The Spanish-American War-era battleship *USS Massachusetts* was scuttled for target practice in the emerald-green waters off Pensacola in 1921.



SS Tarpon

2 The merchant steamer *SS Tarpon* plied the Gulf Coast for over 30 years before she was lost in a gale off Panama City in 1937.



Vamar

3 Admiral Richard Byrd used this steamer in his Antarctic expedition of 1928-30 and named her Eleanor Bolling in honor of his mother; later sold and re-named *Vamar*, she sank off Port St. Joe in 1942 under mysterious circumstances.



CITY OF HAWKINSVILLE

4 The turn-of-the-century paddlewheel steamboat *City of Hawkinsville* lies submerged in the Suwannee River, a storybook ghost ship inhabited by catfish and sturgeon.



Regina

5 The Cuban tanker-berge *Regina*, loaded with 350,000 gallons of molasses, wrecked in a gale off Bradenton Beach in 1940.

San Pedro

6 Victim of the 1733 Spanish Plate Fleet disaster, the galleon *San Pedro* was lost in a hurricane near Islamorada in the Florida Keys.



Urca De Lima

11 Part of the ill-fated 1715 Spanish Plate Fleet wrecked off Florida's east coast, *Urca de Lima* became the state's first Underwater Archaeological Preserve in 1987.



Georges Valentine

10 The Italian lumber bark *Georges Valentine* wrecked in 1904 offshore of the House of Refuge near Stuart, scattering her cargo of mahogany lumber on the beach.



Lofthus

9 The wreck of the Norwegian bark *Lofthus*, sunk during a storm in 1898 near Boynton Beach, was dynamited to salvage the valuable cargo of lumber.



SS Copenhagen

8 The steamship *SS Copenhagen*, wrecked in 1900, rests in clear blue water off Pompano Beach and is home to a variety of marine life.



Half Moon

7 *Half Moon*, originally christened *Germania*, was a famous racing yacht before being used as a floating cabaret in Miami and later wrecking on a shoal near Key Biscayne.



Florida's Underwater Archaeological Preserves are a program of the Division of Historical Resources. For more information please contact the Bureau of Archaeological Research at (850) 245-6444 or visit our website at www.flheritage.com.

Design by Gerhard Graphics • Image of USS Massachusetts courtesy of Glencoe Models, Inc. All other ship paintings courtesy of William Trotter.



Florida's Underwater Archaeological Preserves are living museums in the sea interpreted for the public so that citizens and visitors may learn more about Florida's maritime heritage. Please dive our shipwrecks with care and respect and remember to "take only pictures and leave only bubbles!"





FLORIDA'S MARITIME HERITAGE TRAIL

SHIPWRECKS

Every shipwreck tells a story of human drama, great exploration, and sea change. The Florida peninsula was, and still is, a stop for many seafarers sailing at night or in bad weather. The remains of thousands of wooden ships lie under the coastal waters of Florida, given to more than 400 years of maritime adventures. Many shipwrecks have become artificial reefs that offer visitors an opportunity to see how nature has adapted these wooden relics.

This poster, *Shipwrecks*, is one of a set of six that describes the Florida Maritime Heritage Trail. Besides shipwrecks, the other Trail themes are lighthouses, history trails, coastal towns, coastal communities, and coastal environments. The Trail highlights examples of historical and natural places that represent the state's maritime legacy. You are invited to explore the Trail beginning with history shipwrecks presented on the other side of this poster. To learn about other shipwrecks and Florida's Maritime Heritage Trail, visit www.floridamaritime.com.

Printed on Recycled Paper

SITE PLAN

THE VIEW FROM DOWN UNDER
The *Copenhagen* provides an ideal arena for an abundance of marine life. Although much of the wreckage has been flattened over time, the frame and bones of the lower hull are readily apparent. The steel hull provides a substrate for hard and soft corals and multi-colored sponges. Invasive reef fish and tropicals of many varieties dart in and out of the twisted structure, which serves as a sheltered nursery. Competition and sea fans every in the gentle surge along the length of the ship. The pillow block which supported the propeller shaft is a focal point for various parrotfish. The empty beds for the ship's two boilers house a population of damselfish and adjacent marine invertebrates dwelling there also in the wooden work. Coral from the ship's hulls, although camouflaged by marine growth, shows the sea bottom near the wreck. Small humps of black anthracite are visible around the periphery of the wreckage.

1. BOW	3. FRAME KNEES	5. PILLOW BLOCK
2. CARGO BEDS	4. SINKING BOWLER	6. INTERMEDIATE FRAME
3. BOWLER BEDS	7. DOUBLE BOTTOM	8. DEEP FRAME
4. ENGINE AND BOWLER SPACE	9. STERN	

Bicolor Mayer

Common Sea Fan

Inhabited Channel Fish

French Angelfish

Caribbean Spiny Lobster

Large Star Coral

**Photos courtesy of Paul Hermann*

Spotted Butterfly Fish

Largerhead Sponge

Sillhouette

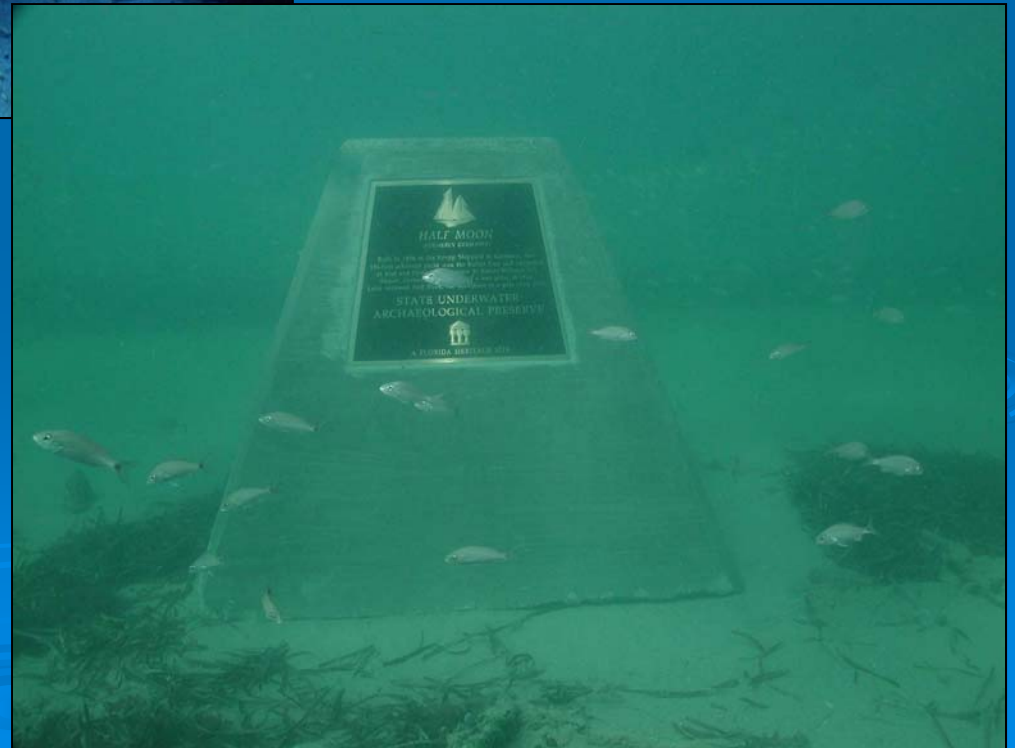
Starlight Parrotfish

State Underwater Archaeological Preserve



Florida Heritage Site

Listed on NRHP



Welcome to the Florida "Museums in the Sea" website. Here you will find information about all of Florida's Underwater Archaeological Preserves. Click on the name of a ship to explore the remains located at that site.

- 1 USS *Massachusetts*
- 2 SS *Tarpon*
- 3 *Vamar*
- 4 *City of Hawkinsville*
- 5 *Regina*
- 6 *San Pedro*
- 7 *Half Moon*
- 8 SS *Copenhagen*
- 9 *Lofthus*
- 10 *Georges Valentine*
- 11 *Urca de Lima*



www.museumsinthesea.com

Partnering for Heritage Tourism & Preservation





Take only photos,
leave only bubbles!

