

Marine Protected Areas on National Wildlife Refuges in Alaska



U.S. Fish and Wildlife Service



Refuges in Alaska...



Marine coastlines...



Ten National Wildlife Refuges in Alaska have marine coastlines...

- ❖ Alaska Maritime
- ❖ Alaska Peninsula/Becharof
- ❖ Arctic
- ❖ Izembek
- ❖ Kenai
- ❖ Kodiak
- ❖ Selawik
- ❖ Togiak
- ❖ Yukon Delta





Alaska Peninsula National Wildlife Refuge





*Becharof National Wildlife
Refuge*





Izembek National Wildlife Refuge

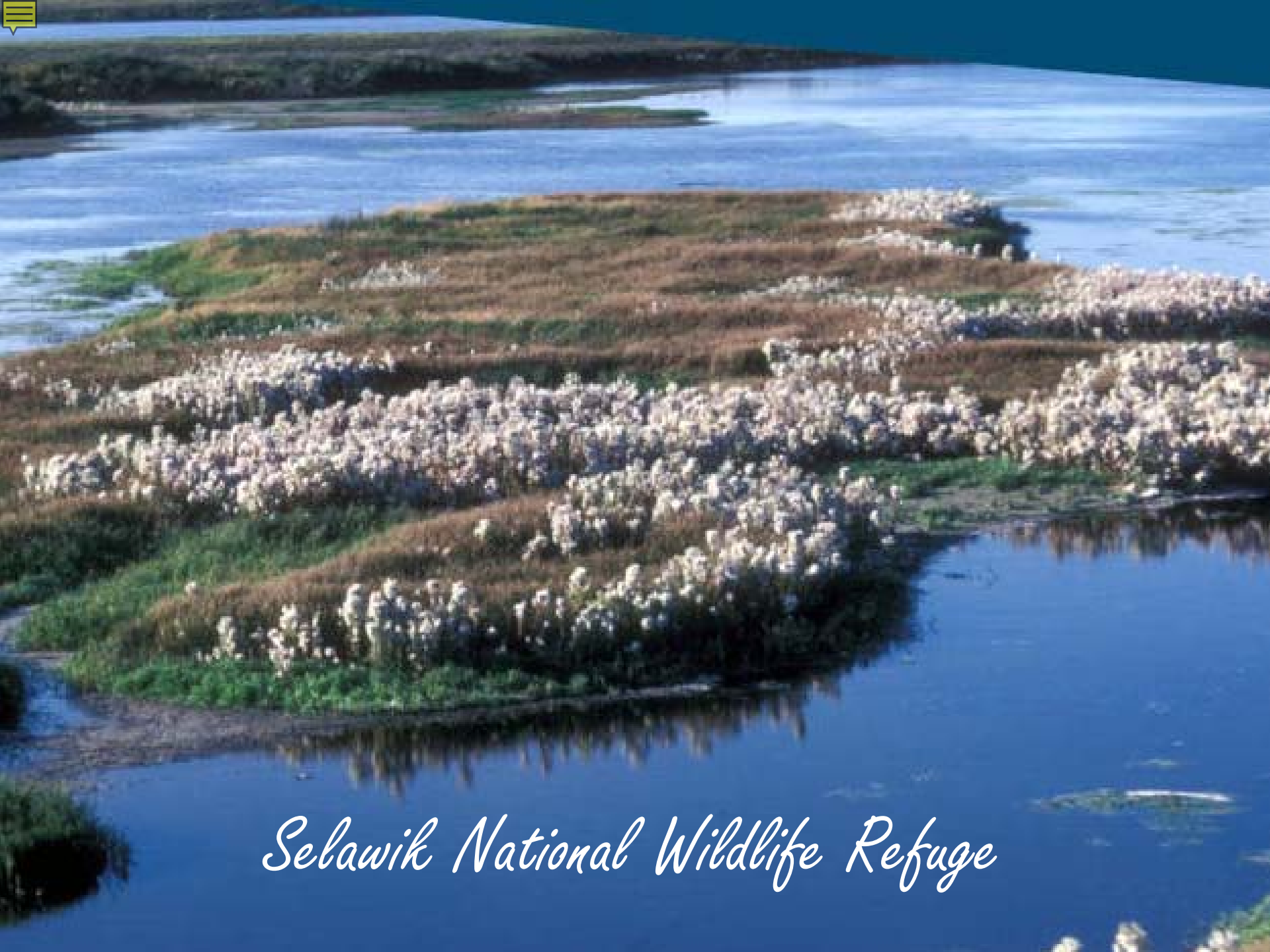


Kenai National Wildlife Refuge





*Kodiak National Wildlife
Refuge*

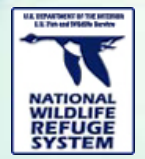


Selawik National Wildlife Refuge



*Togiak National
Wildlife Refuge*





Definition...

Under the current National System of MPAs, the National Wildlife Refuge System has identified 180 refuges as "marine" refuges (ocean, coastal, insular, and Great Lakes) based on having lands (submerged, intertidal, or emergent) within their administrative boundaries.



MPAs on refuges...



There are only 3 refuges that we consider have MPAs within their boundaries -



Pre-statehood withdrawals...



Portions of 3 refuges were withdrawn prior to statehood and include submerged tidelands. By definition these withdrawn submerged tidelands within refuge boundaries qualify as MPAs.



Alaska Maritime...



1. Alaska Maritime

Afognak

Karluk

Simeonof Island

Semidi Island

Women's Bay

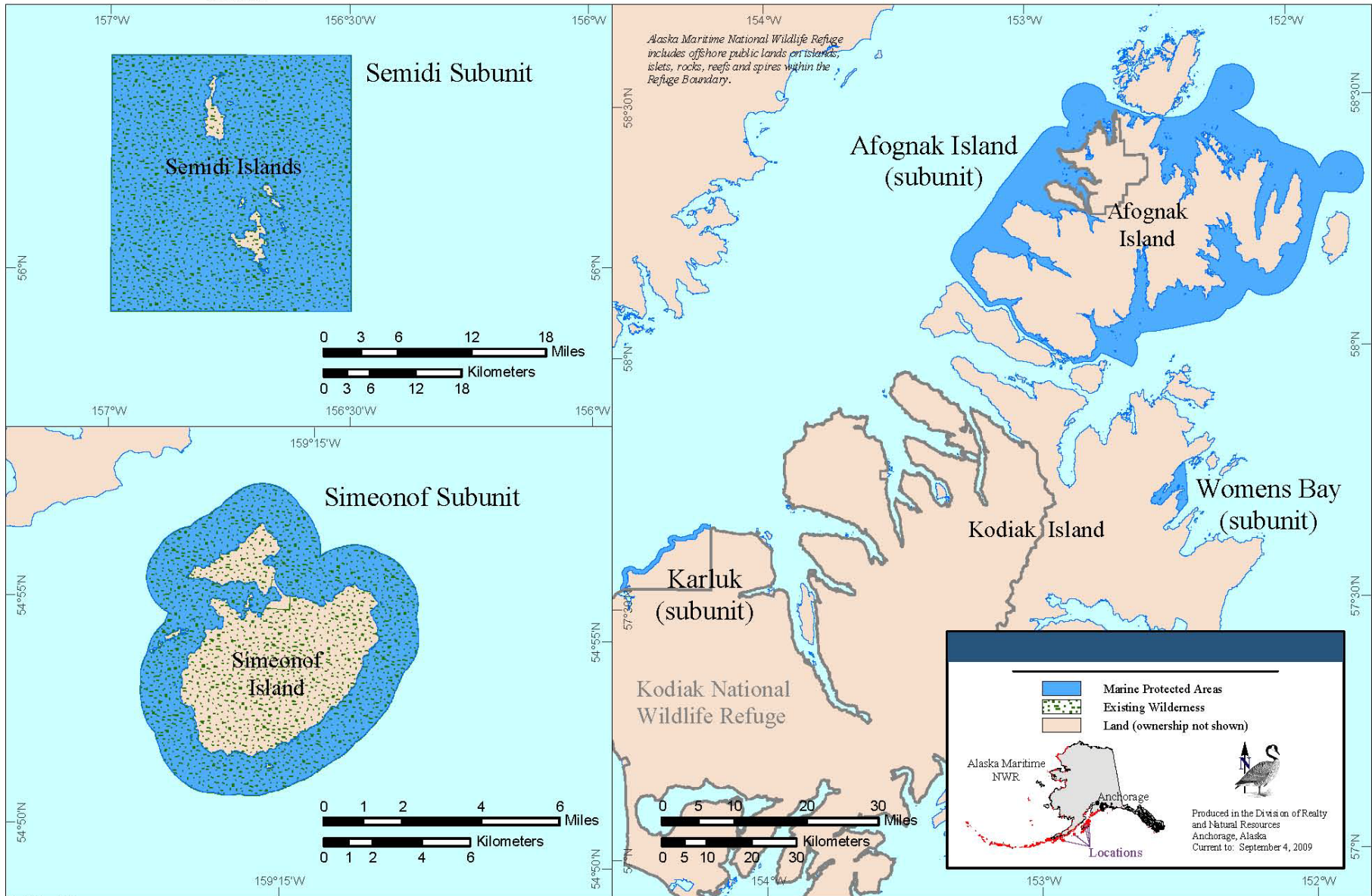




U.S. Fish & Wildlife Service

Marine Protected Areas (MPAs) within Alaska Maritime NWR

Alaska Maritime National Wildlife Refuge Alaska



Arctic...



2. Arctic

**Lagoons within
barrier islands
off the coast of
the refuge**

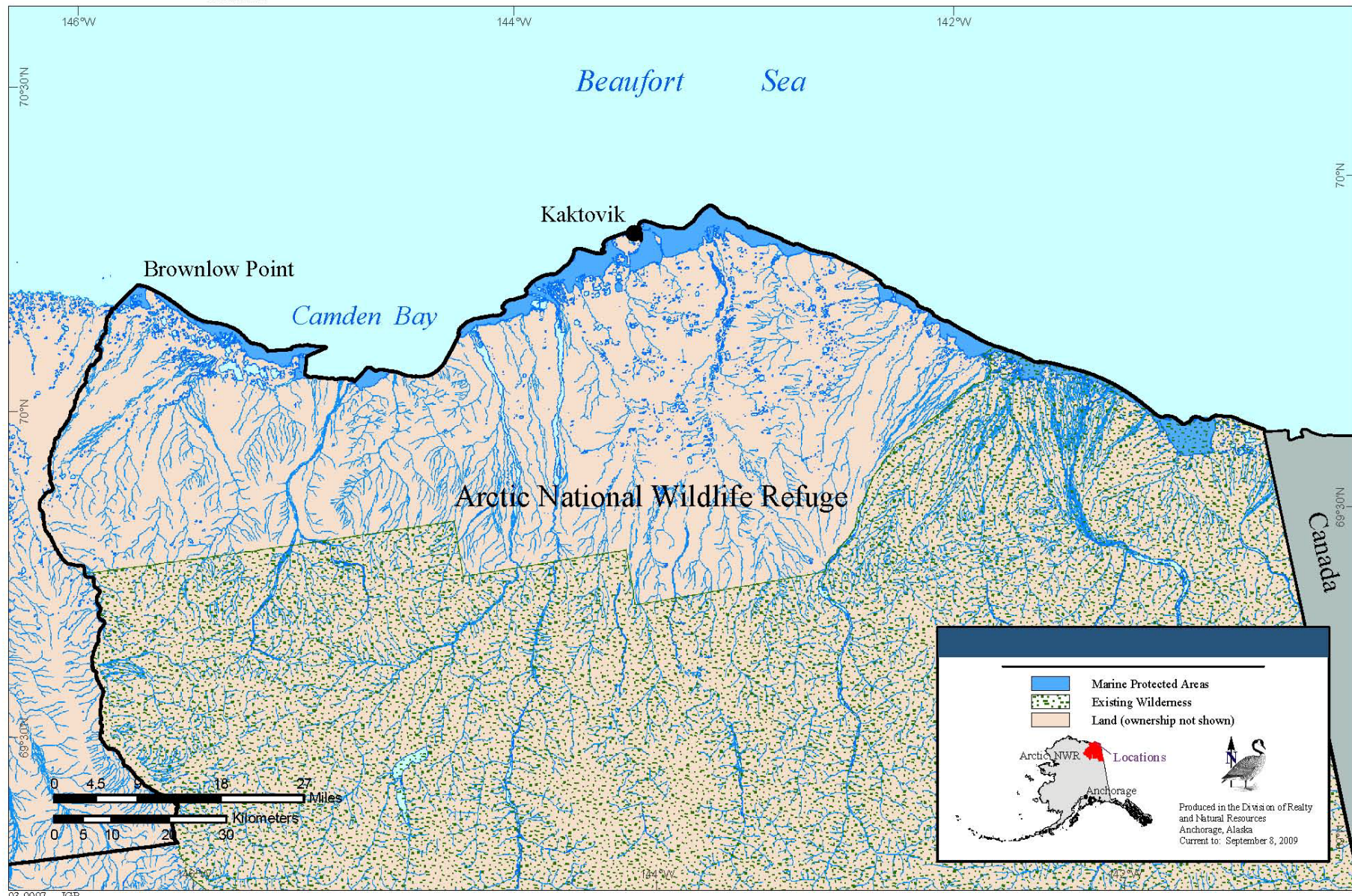




U.S. Fish & Wildlife Service

Arctic National Wildlife Refuge Alaska

Marine Protected Areas (MPAs) within Arctic NWR



Yukon Delta...



3. Yukon Delta

Area around
Nunivak Island

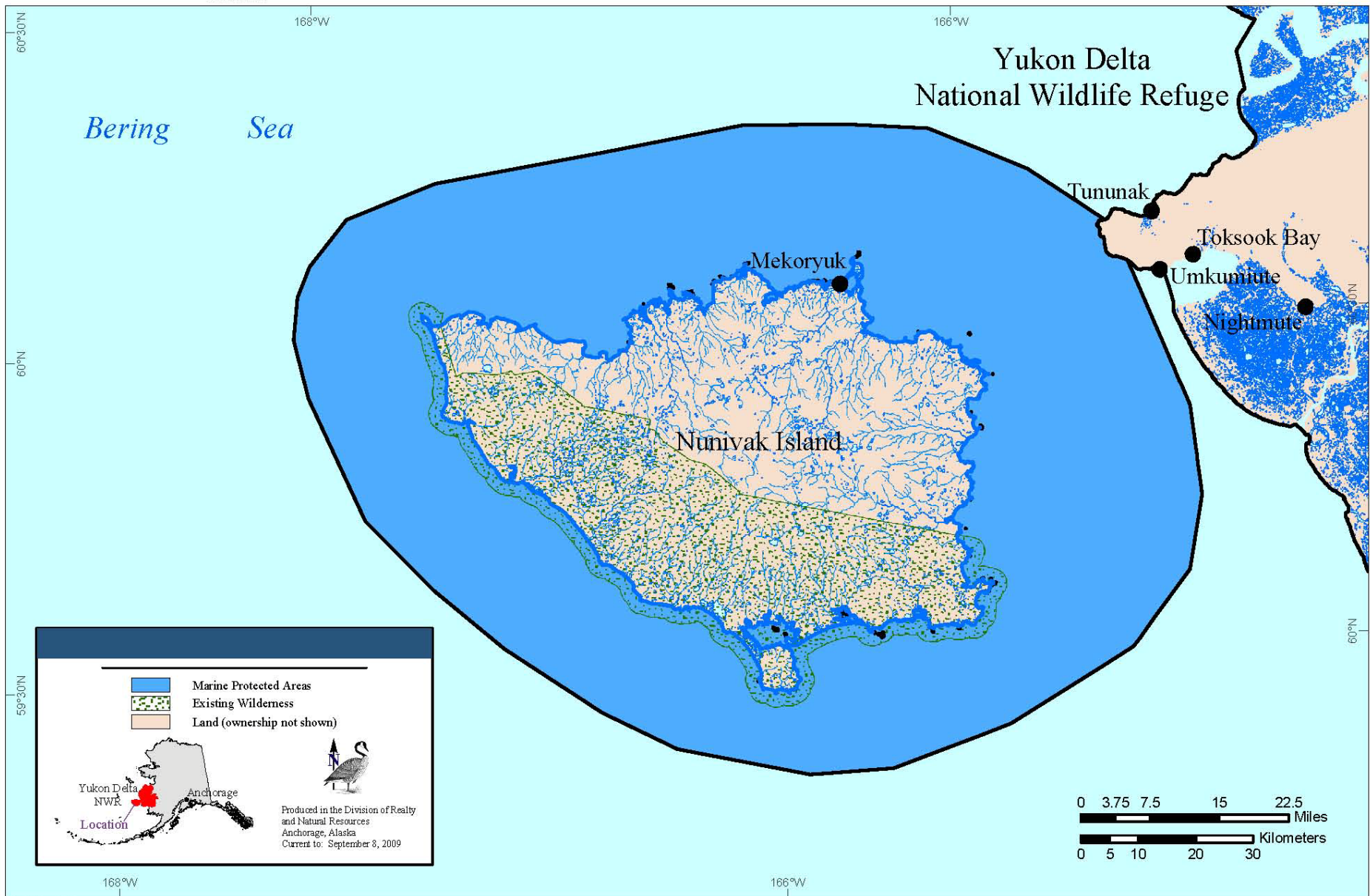




U.S. Fish & Wildlife Service

Marine Protected Areas (MPAs) within Yukon Delta NWR

Yukon Delta National Wildlife Refuge Alaska



Legend

- Blue box: Marine Protected Areas
- Green stippled box: Existing Wilderness
- Light orange box: Land (ownership not shown)

Location

Produced in the Division of Realty and Natural Resources
Anchorage, Alaska
Current to: September 8, 2009

MPA management...



MPA management on refuges is determined by refuge purposes, appropriate uses, compatibility, the role/importance for resource protection on National Wildlife Refuges, and impacts on other uses.



Refuge purposes...



Alaska Maritime ANILCA purposes:



(i) To conserve fish and wildlife populations and habitats in their natural diversity including, but not limited to marine mammals, marine birds, and other migratory birds, the marine resources upon which they rely...

(v) To provide ... a program of national and international scientific research on marine resources;

M/V Tiglax...



**North Pacific Research Board –
several funded refuge projects**

Refuge purpose...



Arctic refuge ANILCA purpose:

(i) To conserve fish and wildlife populations and habitats in their natural diversity including, but not limited to...polar bears...



Refuge purpose...



Yukon Delta refuge ANILCA purpose:



(i) To conserve fish and wildlife populations and habitats in their natural diversity including, but not limited to...seabirds...salmon...marine mammals...

Key management challenges...



Jurisdiction – defining roles

Climate change

- *Sea level rise*
- *Impacts on marine resources*
- *Ecosystem changes to broader marine ecosystem*
- *Defining vulnerabilities of existing refuges to climate change*



Lack of science capacity to monitor, research/understand change, and ultimately manage for adaptation, resiliency, or our marine and terrestrial fish, wildlife, and plant resources

Working with others...



Coordination with sister conservation agencies (NPS, NERRS, NOAA Fisheries, Protected Species, and other NOAA programs), State agencies, and other agencies (USGS, MMS, EPA, USCG, etc.) is vital to our mission.



Future opportunities...



Build on Basic MPA purposes

- Enhance stewardship
- Build partnerships
- Increase support for marine conservation
- Effective and efficient outreach
- Promote cultural heritage
- Protect MPA resources



Thanks!