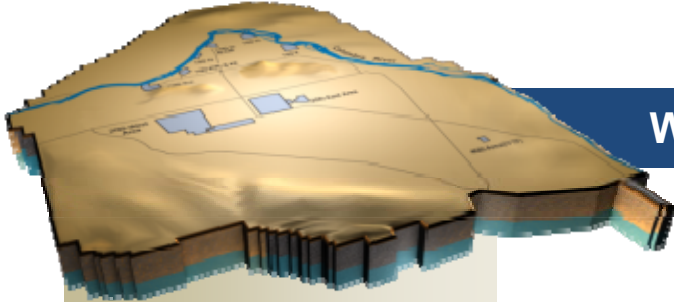


# ARRA Weekly Report



**Week Ending October 22, 2010**

October 26, 2010  
Contract DE-AC06-08RL14788  
Modification M047  
CHPRC1010-01

# Contents

OVERVIEW.....	3
ACCOMPLISHMENTS.....	4
RL-0011 Nuclear Materials Stabilization & Disposition.....	4
RL-0011.R1: Plutonium Finishing Plant D&D.....	4
RL-0013 Solid Waste Stabilization & Disposition.....	8
RL-0013C:R1.1: MLLW Treatment.....	8
RL-0013C:R1.2: TRU Waste.....	9
RL-0030 Soil & Groundwater Remediation, Groundwater/Vadose Zone.....	8
RL-0030.R1: Central Plateau Soil & Groundwater.....	12
RL-0040 Nuclear Facility D&D – Remainder of Hanford.....	13
RL-0040.R1.1: U Plant/Other D&D.....	13
RL-0040.R1.2: Outer Zone D&D/Waste Sites.....	15
RL-0041 Nuclear Facility D&D – River Corridor Closure Project.....	16
RL-0041.R1.1: 100K Area Remediation.....	16
UPCOMING EVENTS.....	20
RL-0011 Nuclear Materials Stabilization & Disposition.....	21
RL-0013 Solid Waste Stabilization & Disposition.....	21
RL-0030 Soil & Groundwater Remediation, Groundwater/Vadose Zone.....	21
RL-0040 Nuclear Facility D&D – Remainder of Hanford.....	22
RL-0041 Nuclear Facility D&D – River Corridor Closure Project.....	22

## OVERVIEW

CH2M HILL Plateau Remediation Company (CHPRC) is using funds from the American Recovery and Reinvestment Act (Recovery Act) to accelerate cleanup and demolition efforts across the Central Plateau and along the river corridor to help pursue the U.S. Department of Energy (DOE) 2015 vision and shrink the Hanford Site cleanup footprint.

### RL-0011 Nuclear Materials Stabilization & Disposition

CHPRC is accelerating critical decontamination and decommissioning (D&D) work to prepare the Plutonium Finishing Plant (PFP) for demolition three years ahead of the Tri-Party Agreement milestone of September 2016. The work scope includes removing over 174 glove boxes/laboratory hoods and other highly contaminated equipment from the 234-5Z, 242-Z, and 2736-ZB buildings as well as preparing the former special nuclear material storage structures and other ancillary buildings for demolition.

### RL-0013 Solid Waste Stabilization & Disposition

Recovery Act funds are allowing CHPRC to accelerate retrieval of 2,500 m<sup>3</sup> of suspect transuranic (TRU) waste, eliminate 1,800 m<sup>3</sup> of mixed low-level and low-level waste (MLLW and LLW), and accelerate the overall cleanup of legacy waste and fuels on the Hanford Site.

### RL-0030 Soil & Groundwater Remediation, Groundwater/Vadose Zone

In the ongoing effort to protect the Columbia River, CHPRC is using Recovery Act funding to construct two groundwater treatment facilities, install over 265 wells that will be used for monitoring, extracting, and remediating groundwater, and decommission 280 wells that are no longer of service.

### RL-0040 Nuclear Facility D&D – Remainder of Hanford

Across the Central Plateau and along the outer zone of the Hanford Site, CHPRC is accelerating the demolition of 34 facilities to reduce mortgage costs on buildings that are no longer of service and complete the remediation of 24 waste sites.

### RL-0041 Nuclear Facility D&D – River Corridor Closure Project

In the 100K Area along the Columbia River, CHPRC is demolishing 15 buildings and sampling and/or remediating 23 waste sites to clear the area and prepare for the disposition of two reactors, K East and K West.

## ACCOMPLISHMENTS

### RL-0011 Nuclear Materials Stabilization & Disposition

#### RL-0011.R1: Plutonium Finishing Plant D&D

Nearly 30 cubic meters of LLW was packaged and shipped from PFP this week, including 73 drums of mixed waste shipped to PermaFix-Northwest for treatment and two roll-on/roll-off boxes of waste shipped to the Environmental Restoration Disposal Facility (ERDF). The Joint Evaluation Team met to evaluate deployment of the new Aspigel® decontamination product and determined that a project-managed, level 3 Readiness Assessment would be sufficient to authorize startup.

Structures, equipment, waste disposition	Total to Date (since April 2009)
Glove boxes/hoods removed	75 glove boxes/hoods
MLLW/LLW shipped	2,087 m <sup>3</sup>
TRU shipped	203 m <sup>3</sup>
Non-radioactive waste shipped	22 m <sup>3</sup>
Process transfer line removed	252 feet
Process vacuum system piping removed	253 feet
Asbestos removed	11,235 feet
Ancillary structures demolished or removed	22 fuel vaults & ancillary buildings prepared for demolition



Photo 1

Workers secure drums of waste leaving the Plutonium Finishing Plant (PFP) bound for Perma-Fix Northwest for treatment. Last week, CHPRC shipped a total of 73 drums and two roll-on/roll-off boxes of waste from PFP. CHPRC is using Recovery Act funding to clear the PFP complex of waste (transuranic, mixed, and low-level) as well as contaminated equipment and support systems to prepare the complex for demolition in 2013.

### Laboratory & Processing Areas

Decontamination was completed on the last of six hoods in room 139, and all six will need to be size reduced and disposed of as TRU waste. Chemical decontamination with RadPro® was completed on hood 139-6; however, surface contaminated object surveys determined it will not qualify for onsite disposal as LLW. The first two hoods in room 139 were isolated from building ventilation and are ready for removal and size reduction.

In the RMC Line, process glove boxes HC-230C-3, C-4, and C-5 are now ready for isolation from building ventilation and removal; all three have qualified for onsite disposal as LLW at ERDF. Preparations are under way to remove the first two sections of the 70-foot-long HA-28 conveyor glove box, which will make room for subsequent removal of three process glove boxes. In the RMA Line, a crew completed external isolations on glove box HA-46 and initiated preparations for supplied air entries to the adjacent hydrogen fluoride scrubber cell to assess industrial and radiological conditions and obtain characterization samples.



Photo 2

Workers ensure a glove box is secured for loading into an IP-2 container for shipment. The glove box was previously removed from Room 144 in the Analytical Laboratory at the Plutonium Finishing Plant.



*A worker guides glove box 180-85 as it is unloaded from a forklift to be loaded into a container for shipment and disposal. The glove box will be disposed of as low-level waste at the Environmental Restoration Disposal Facility.*

Photo 3



Photo 4

*In the Radioactive Acid Digestion Test Unit area of the Plutonium Finishing Plant, a Radiological Control Technician takes characterization samples from the interior of glove box 100A.*

#### *2736-Z/ZB Vault Complex*

Final non-destructive assay of glove box 636 indicates one port will have to be removed prior to disposal as LLW. The glove box has been staged for surgical size reduction. Removal of the Bagless Transfer System welder under glove box 642-E has been completed.

#### *242-Z Americium Recovery Facility*

The 242-Z D&D team is temporarily supporting one of the RMA Line D&D teams to prepare for and execute upcoming supplied air entries into the hydrogen fluoride scrubber cell in room 232 of 234-5Z.

#### *Infrastructure, process support systems, and equipment removal*

Removal of process vacuum and process transfer piping as well as asbestos continued throughout the PFP facilities. Since startup of these activities late last fiscal year, 253 feet of process vacuum system piping and 252 feet of process transfer lines have been removed, packaged, and transferred to waste operations for disposal as TRU waste. Approximately 11,235 linear feet of asbestos has been removed from piping and ductwork since April 2009. Preparations continued to grout fill the first five of nearly 50 trenches containing below-grade drain lines servicing PFP's many glove boxes and hoods. The grouting will strengthen the trenches so glove boxes may be moved over them.

## RL-0013 Solid Waste Stabilization & Disposition

RL-0013C:R1.1: MLLW Treatment

Of the 1,800 m<sup>3</sup> of MLLW and LLW planned for shipment under the Recovery Act:

- 1,020 m<sup>3</sup> of MLLW and LLW have been shipped to date including:
  - 861 m<sup>3</sup> that have been treated and disposed.
  - 159 m<sup>3</sup> at off-site treatment facilities awaiting processing. Treatment is scheduled for FY11.

One shipment went out this week on Oct. 22 from the Central Waste Complex (CWC) to Perma-Fix Northwest (PFNW). The shipment contained two boxes (6.4 m<sup>3</sup>) of LLW non-debris. This waste will be volume-reduced, stabilized, and packaged for disposal in Hanford's Mixed Waste Disposal Units.



Photo 5

*The last two high-integrity containers (HIC) containing legacy low-level waste have been in storage at the Central Waste Complex since 1995. These HICs were shipped in this week's offsite shipment to Perma-Fix Northwest on Oct. 22.*





Photo 6

*This week's shipment of 6.4 cubic meters of low-level waste non-debris is loaded for shipment. A worker completed a final inspection prior to the shipment's departure for Perma-Fix Northwest.*

#### RL-0013C:R1.2: Transuranic (TRU) Waste

Of the 2,500 m<sup>3</sup> of suspect TRU waste planned for retrieval under the Recovery Act:

- 103 m<sup>3</sup> are staged, pending shipment.
- 698 m<sup>3</sup> have been shipped to a treatment, storage, or disposal facility.

In the 3A burial ground, workers continued excavating the east end of Trench 8 over the remaining boxes and hand excavation continued in Trench 17 for the retrieval of Box 12. The Trench 17 Box 12 work package was approved and planning continued on the retrieval of the remaining boxes in Trench 17. The electrical service upgrade was completed for MO-2152. In the 4B burial ground, the Hazard Review Board (HRB) meeting dry-run for the 4B Trench 11 Excavator Interrogation of the Event Site work package (2X-10-4470) was conducted along with the initial 4B Trench 11 retrieval planning meeting. In the 12B burial ground, the acceptance test for the real-time radiography (RTR)/drum warming unit (DWU) was completed.



Photo 7

Over-pack waste boxes were used to contain a buried waste container west of the newly exposed containers in Trench 8 of the 3A burial ground.



Photo 8

Two small fiberglass-reinforced plywood boxes and a large metal box have been located after excavation in Trench 8 of the 3A burial ground.

#### *TRU Project Drum Repackaging*

Of the 850 m<sup>3</sup> planned to be characterized and repackaged with funding from the Recovery Act:

- 1,904 drums (396.1 m<sup>3</sup>) have been repackaged.
- 96 TRUPACT-II shipments [1,343 55-gallon drums, 24 standard waste boxes (SWBs), two ten-drum over-packs, 456 85-gallon over-packs and 414 drums over-packed into 118 SWBs (507.67 m<sup>3</sup> total)] have been shipped.

#### *Suspect TRU Waste Shipments*

Of the 637 m<sup>3</sup> of suspect TRU waste planned for shipment under the Recovery Act:

- 119.4 m<sup>3</sup> have been shipped to date (40 m<sup>3</sup> were shipped using Base funding).
- 109.2 m<sup>3</sup> have been repackaged into WIPP-certifiable packages.

**RL-0030 Soil & Groundwater Remediation, Groundwater/Vadose Zone**

RL-0030.R1: Central Plateau Soil &amp; Groundwater

*Well Drilling & Decommissioning*

The following table showcases CHPRC's recent progress in well drilling and decommissioning.

Operable Unit	Scope (Wells to be drilled with Recovery Act funding)	In progress	Drilled to Total Depth <sup>1</sup>	Completed or Developed <sup>2</sup>
100-BC-5	Support characterization and removal of chromium (6 wells)	3	2	2
100-KR-4	Support characterization of the vadose zone and aquifer (13 wells)	8	6	6
100-HR-3	H Area: Support the optimization of removal of chromium (40 wells)	40	40	37
100-HR-3	H Area: Remedial Investigation/Feasibility Study Hanford Formation (15 wells)	3	-	-
100-FR-3	Support for Remedial Investigation/Feasibility Study characterization (3 wells)	2	2	-
200-ZP-1	Support the 200 West Groundwater Treatment Facility that will primarily treat carbon tetrachloride contamination in the groundwater (17 wells)	17	15	15
300-FF-5	Support characterization of the aquifer (11 wells)	6	4	4
Site-wide	Decommission wells that are no longer of service <sup>3</sup>			176

<sup>1</sup> Wells are drilled to varying depths to address contaminants at different depths in the soil.<sup>2</sup> When a well is developed, the well screen and riser pipe are placed in the hole, filter pack material is placed around the screen, and the well has been surged and pumped to establish good communication between the well and the surrounding soil.<sup>3</sup> Wells that are inactive or no longer of service are filled with grout or other materials, the casing is removed, and a cap or marker is installed.*200 West Groundwater Treatment Facility*

Approximately 200 cubic yards of concrete were placed, bringing the project-to-date total to approximately 3,400 cubic yards placed since the activity began in June 2010. Subcontractor Skanska USA Build Inc. and its subcontractors continued construction of the Radiological and Bio-Processing Buildings. Subcontractor George A. Grant also continued work on the four transfer buildings and recent progress included (listed by building):

- Extraction #1: The sheeting and roof panels are complete.
- Extraction #2: The structural steel construction is complete.
- Injection #1: The slab-on-grade is complete and curing.

For the S/SX extraction building, subcontractor Ojeda Business Ventures LLC continued construction with approximately 40 cubic yards of concrete poured for footings to date.

Only one of the nine Phase II road crossings remains under construction. High-density polyethylene bonding activities are expected to commence next week.



Photo 9

*A close-up of a footing under construction for an extraction building that will support the 200 West Groundwater Treatment Facility. This footing is for the extraction building under construction by subcontractor Ojeda Business Ventures LLC, a small disadvantaged business based in Richland, Wash.*

### *DX Groundwater Treatment Facility*

Acceptance testing continued. Progress also included testing facility heaters, roll-up doors, and the air compressor. Electrical and mechanical equipment installation is approximately 60 and 90 percent complete, respectively, for the Chemical Addition building.

## **RL-0040 Nuclear Facility D&D – Remainder of Hanford**

RL-0040.R1.1: U Plant/Other D&D

### *U Canyon*

Activities at U Canyon are shifting toward preparations for grouting. The water tie-in for the batch plant, haul road contract agreement, and training of grout contractor personnel are three examples. Load testing of the recently installed wire rope on the 10-ton crane is in progress. Shielding is being placed around Cell 30 in anticipation of the D-10 tank preparation activities. DOE Richland Operations Office review and approval of the documented safety analysis (DSA) is ongoing. A demonstration of grout preparation and flow characteristics was presented by the grout provider.

### *U Plant Ancillary Facilities*

Final debris from the demolition of the 224-U and 224-UA buildings is being loaded for disposal at ERDF.

### *200 East Core Industrial Area*

Final surveys are complete at the site of the former 272-E Fabrication Shop and demobilization from the site is occurring. Demolition of the crusher house and conveyor system in the 284-E Powerhouse complex is continuing. Construction of the asbestos abatement containment in the Powerhouse is complete. Detailed planning for the explosive demolition of the 284-E Powerhouse stacks is in progress.



Photo 10

*Final preparations are made for asbestos removal in the 284-E Powerhouse.*

### *200 West Area Industrial Facilities*

Planning, characterization, and radiological surveys are ongoing for the six industrial structures planned for demolition. Asbestos abatement is complete on the 2902W Elevated Water Storage Tank and asbestos abatement began on the exterior of 284WB Package Boiler Plant.

### *209-E Criticality Mass Laboratory*

Work continued on activation of glove ports in the Mix Room to support removal activities. The DSA was approved and the implementation validation review process began. Internal inspection of the facility tanks began. Radiological characterization activities in support of TRU versus non-TRU determinations

are being performed. The design of an enclosure to support tank cutting activities was completed and fabrication started.

#### RL-0040.R1.2: Outer Zone D&D/Waste Sites

##### *Arid Lands Ecology Reserve (ALE) D&D*

Demolition of the 623A Plant Radio Relay Building is complete. Demolition began on the 6633 Franklin County Communications Building. Cold and dark isolation and waste characterization continued on the 6632 Verizon Communications Building. Debris pile cleanup continued on lower ALE; overall debris site cleanup is approximately 99 percent complete. Demobilization activities are ongoing and include relocating materials and equipment to the 200 West Area.

##### *North Slope Debris Removal*

Sealaska Environmental Services, a subcontractor to CHPRC, is securing resources and preparing for mobilization to perform debris site cleanup on the North Slope. Ecological and cultural reviews are continuing for other areas on the North Slope. Debris cleanup resumed in Hanford Reach National Monument Areas 15 and 18.



Photo 11

Cleanup is in progress in Areas 15 and 18 of the Hanford Reach National Monument of the Hanford Site. Subcontractor Sealaska Environmental Services is securing resources and preparing to mobilize to perform debris site cleanup at other areas of the North Slope, a 169-square-mile area north and northeast and across from the Columbia River from the main Hanford Site.

*D&D of Railcars Located on the 212-R Rail Spur*

The Action Memorandum and the Removal Action Work Plan documents for D&D of the railcars on the 212-R rail spur are being routed through regulatory review. Resources are being secured and the work package is being finalized for visual inspection of the railcars.

*Waste Sites*

The following table showcases CHPRC's recent progress in outer zone waste remediation:

Waste Site in Progress	Tons of Contaminated Soil Removed	
	Week Ending Oct. 22, 2010	Total to Date
600-222	150	150
600-286-PL	1,830	7,625
BC Control Area	7,000	243,000

Recent activities regarding the outer zone waste sites also includes (listed by operable unit or site):

- *200-MG-1*
  - 216-S-26: Vendor review is ongoing; selection is anticipated this week.
  - 600-36: Remediation field work is complete. Sample analyses are acceptable. The Remediation Action Report (RAR) is being prepared.
  - 600-222: Field work commenced.
  - 600-226: Field work commenced on Oct. 15, 2010.
  - 600-OCL: Retrieve, treat, and disposal activities will commence after completion of 600-286/287-PL activity.
- *200-CW-3*
  - 216-N-4: Sample results indicate remediation is complete; the RAR is being prepared.
  - 216-N-6: Excavation is complete, initial screening was performed, and detailed down-post-surveys are complete. Sampling is complete; results indicate that no additional excavation is required. The RAR is being prepared.
  - 600-286-PL: Remediation is in process with ongoing shipments to ERDF.
  - 600-287-PL: Remediation preparations are complete; overburden removal is under way.
- *BC Control Area*
  - For Zone A, approximately 78 acres have been excavated and surveyed.
  - For Zone B, radiological down-posting surveys are in process.

**RL-0041 Nuclear Facility D&D – River Corridor Closure Project**

RL-0041.R1.1: 100K Area Remediation

*Facility D&D*

Demolition is complete for the 183.2 KW Sedimentation Basin, an approximately 290,000-square-foot structure that once supported the cooling of the K West plutonium production reactor. Sampling of the basin and removal of the staged rubble piles is being planned. Ultimately, the excavation site will be backfilled and contoured to match the surrounding landscape.





Photo 12

*The site of the former 183.2KW Sedimentation Basin after demolition. The 37.8-million-gallon water collection, filtration, and treatment basins covered an area approximately six football fields in size and once processed water from the nearby Columbia River to support plutonium production at K West Reactor during the Cold War.*

Demolition and debris load-out continued on the west side of the 105KE Reactor. Demolition began on the removal of the 105KE discharge chute and the remaining basin floor at the base of the discharge chute. Debris will be staged for future load-out as a part of soil remediation activities in the former basin area.



Photo 13

*Debris size reduction and removal take place on the southwest corner of the 105KE Reactor building (right) while demolition of the discharge chute and the remaining basin floor occurs on the north side of the reactor building (left).*

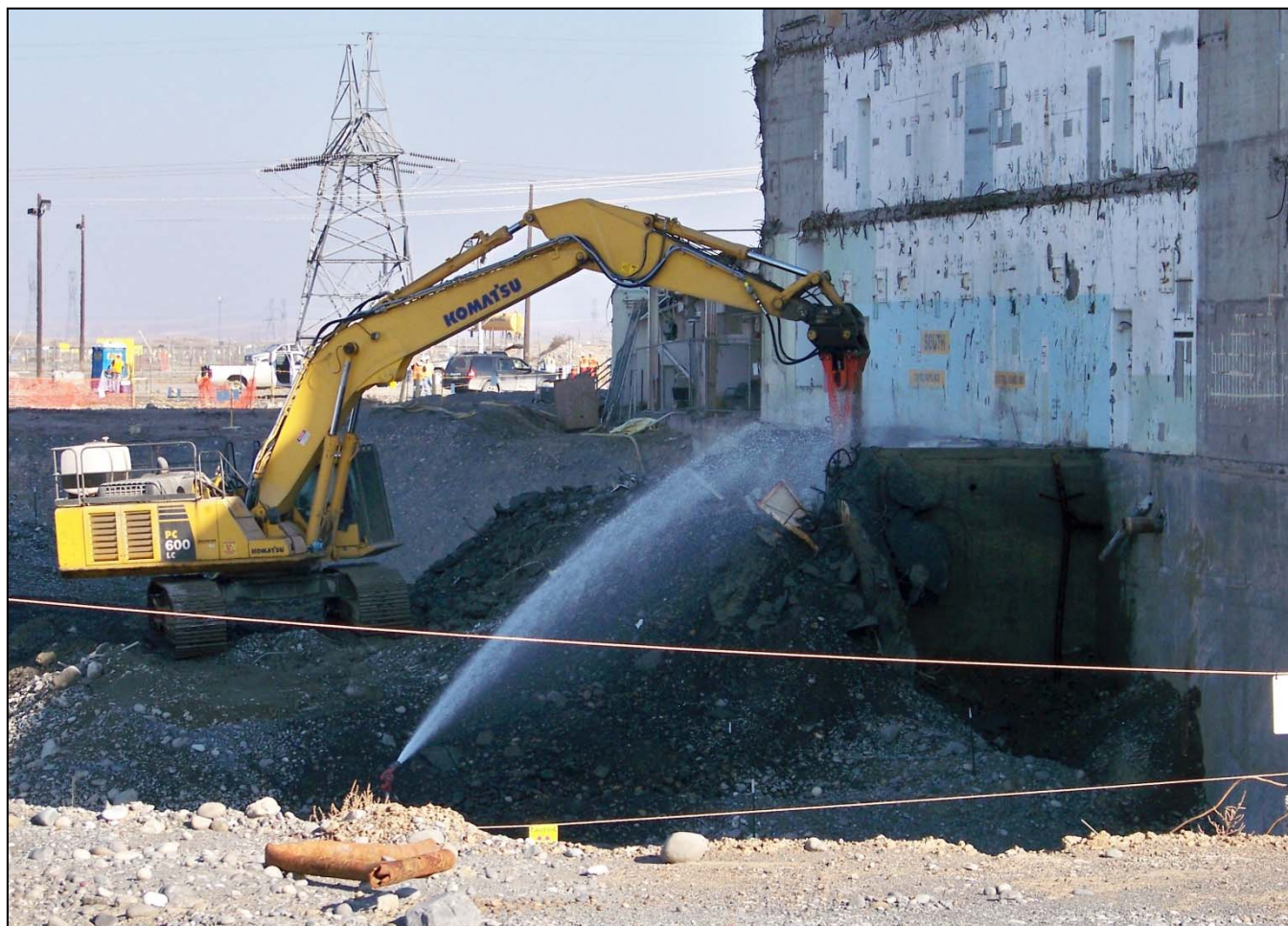


Photo 14

*A close-up of the demolition of the discharge chute and the remaining basin floor in progress on the north side of the 105KE Reactor.*

Planning continued on a multi-day design review meeting scheduled for November for the preliminary design for disposition of the 105KE Reactor.

At the 105KW Fuel Storage Basin, punch list items are being completed for the facility heating, ventilation, and cooling (HVAC) system upgrades. Insulation is being installed on the exterior ducting. Bollards are being installed near external components.

#### *Infrastructure Utilities Upgrade Project*

Installation of the fire water and potable water lines in the 100K Area is complete up to the tie-in points. Preparations are being made for connecting the new fire water and potable water lines to the facilities in the 100K Area. Bollards are being placed around fire hydrants.

Electrical installation continued at the water treatment building. Items that need to be finished in order to obtain Building Occupancy Permit are being completed for the water treatment building. Portions of the potable water treatment system are being flushed.

Punch list items are being worked and construction completion documents are being prepared for the A9 Substation Refurbishment. Soil resistivity testing is being performed in the A9 Substation to confirm system safety.

#### *Waste Sites*

Recent progress in remediation of the 100K Area remediation includes (listed by waste site):

- *100-K-42*: 38 roll-on/roll-off containers with 801 tons of soil were shipped to ERDF.
- *116-KE, 117-KE, & 116-KE-1*: Crews continued mobilizing into the area, loading 47 containers with 1,049 tons of material.
- *100-K-57*: Planning is in progress to have partial excavation of the site assist with the cultural mitigation of the remainder of the site.

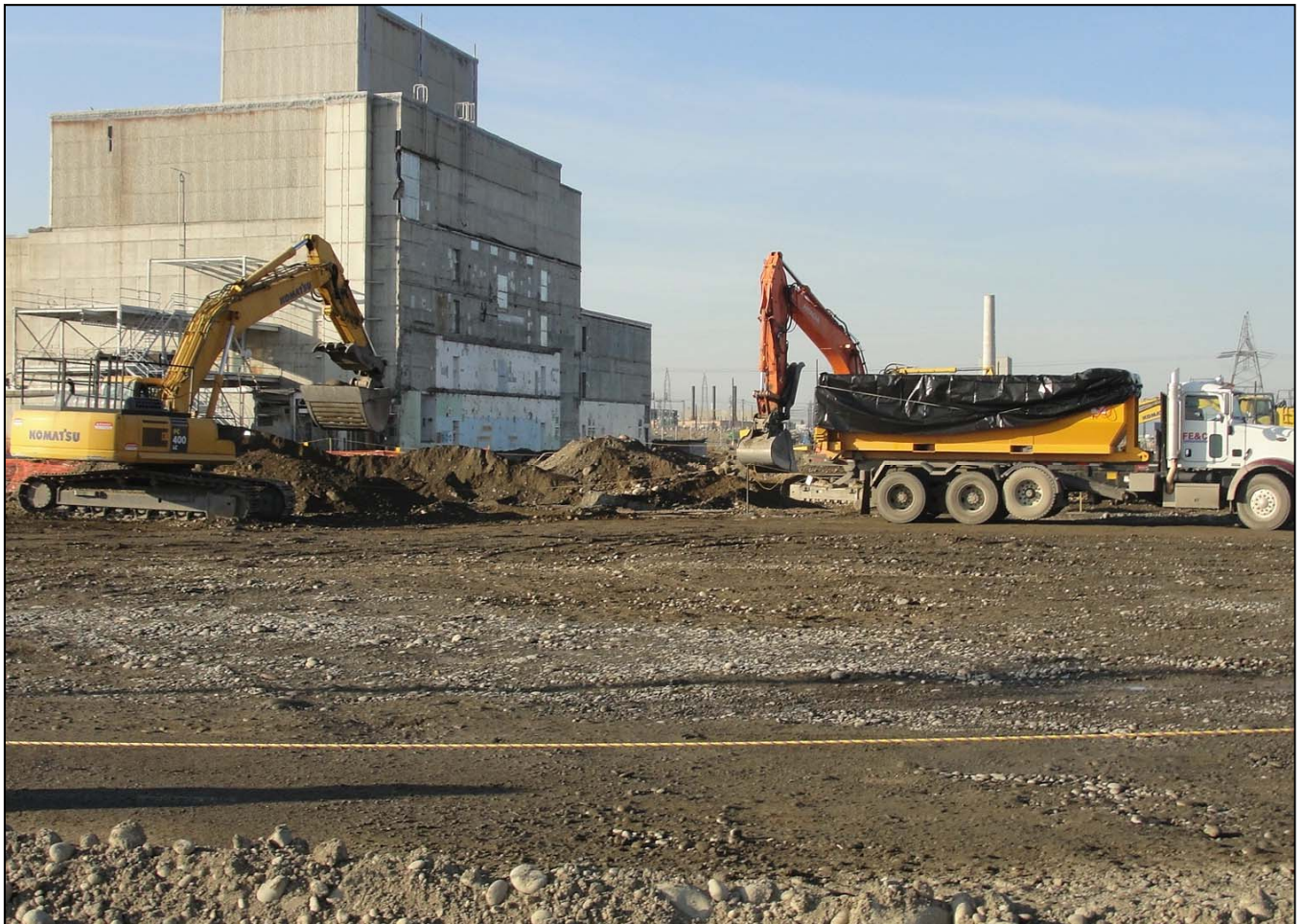


Photo 15

*A view toward the west near the 117-KE site, where crews are making access to load out "hard to detect" materials associated with the 117-KE structure. Crews are removing a designated amount of a clean area to maximize operational efficiencies and minimize radiological controls.*

## UPCOMING EVENTS

### RL-0011 Nuclear Materials Stabilization & Disposition

#### RL-0011.R1: Plutonium Finishing Plant D&D

- Remove six hoods in room 139 and stage them for size reduction.
- Complete grouting of the first phase of drain line trenches in the 234-5Z building.
- Complete disposition of remaining chemicals from room 144.
- Clean out and decontaminate the first of five remaining glove boxes/hoods in room 144.
- Initiate process equipment removal from the first three glove boxes in room 179.
- Isolate and remove the second of six glove boxes from room 642 of the 2736-ZB building.
- Remove glove boxes HC-230C-3, -4, and -5 and transfer them to waste operations for disposal.
- Complete external isolations, decontamination, and removal of glove box 100A.
- Authorize use of Aspigel® as an alternate decontamination process and deploy it to the field.
- Initiate chemical decontamination of glove box HA-46.
- Continue removing process vacuum and process transfer piping.
- Begin isolation and cleanout of glove box WT-2 in 242-Z building.

### RL-0013 Solid Waste Stabilization & Disposition

#### RL-0013C:R1.1: MLLW Treatment

- Planned shipment of four drums (0.8 m<sup>3</sup>) of LLW debris from CWC to PFNW.

#### RL-0013C:R1.2: TRU Waste

- TRU Retrieval
  - 3A burial ground:
    - Approve Trench 17 Box 12 work package, complete box repairs and construction of shoring box, and remove Box 12.
    - Continue work planning for removal/shipment of Boxes 27 and 13 from Trench 17.
    - Continue excavating Boxes 16-20 in Trench 17.
    - Develop and review operating documentation for the portable containment enclosure in preparation for repackaging Box 80 in Trench 17.
    - Continue excavation and begin retrieval of remaining Trench 8 boxes.
    - Remove and over-pack two culverts from Trench 8.
    - Plan excavation and retrieval of last Trench 8 culvert.
    - Continue assay campaign for removed Trench 8 containers.
  - 4B/4C burial grounds:
    - Complete HRB preparation and work package (2X-10-04470) updates for Trench 11 Interrogator Excavation of Event Site and conduct HRB.
    - Conduct 4B Trench 11 retrieval planning meeting.
    - Perform *10-04470 218-W-4B Trench 11 Interrogator Excavation of Event Site Work Package 2X-10-04470*.
    - Complete the initial disinfection and filling of the Mobile Radioactive Decontamination Unit (MDU) with potable water.
    - Approve the operating procedure and fill/remove water work package for the MDU.
  - 12B burial ground:
    - Complete all remaining construction upgrades.
    - Complete calibration, confirmation, and verification of the passive/active neutron assay system.

- Complete the acceptance and operational tests for drum venting system 3 and the operational tests for the RTR/DWU.
- Validate and approve remaining operating procedures for the Next Generation Retrieval Project.
- TRU Repack
  - No planned TRUPACT-II shipments.
- Suspect TRU Waste Shipments
  - One planned shipment this week.

## **RL-0030 Soil & Groundwater Remediation, Groundwater/Vadose Zone**

### **RL-0030.R1: Central Plateau Soil & Groundwater**

- Continue construction of the 200 West and DX Groundwater Treatment Facilities.
- Continue decommissioning wells across the site.
- Continue drilling at 100-BC-5, 100-HR-3, 100-KR-4, 100-FR-3, 200-ZP-1, and 300-FF-5.

## **RL-0040 Nuclear Facility D&D – Remainder of Hanford**

### **RL-0040.R1.1: U Plant/Other D&D**

- Complete debris load-out of the 224-U and 224-UA facilities.
- Continue asbestos abatement in the U Canyon galleries.
- Continue demolition preparations for the 284-E Powerhouse.
- Continue demolition of the crusher house and conveyor building at the 284-E Powerhouse.
- Complete demobilization for the 272-E Fabrication Shop.
- Continue preparations for demolition of the 209-E Criticality Mass Laboratory.
- Continue demolition planning, characterization, and asbestos abatement activities for the 200 West Area industrial facilities.

### **RL-0040.R1.2: Outer Zone D&D/Waste Sites**

- Continue demolition of upper ALE communication facilities.
- Continue debris pile cleanup activities on lower ALE.
- Continue demobilization activities on the ALE Reserve.
- Continue removing debris and processing cultural and ecological reviews for removing debris from the North Slope.
- Continue planning, document preparation, and compilation of characterization information for the railcars in the 200 North Area.

## **RL-0041 Nuclear Facility D&D – River Corridor Closure Project**

### **RL-0041.R1.1: 100K Area Remediation**

- Continue demolition on the west side of the 105KE reactor.
- Continue demolition on the 105KE discharge chute and the remaining basin floor at the base of the discharge chute.
- Complete activities for upgrading the 105KW HVAC system.
- Continue preliminary design and review activities for disposition of the 105KE Reactor.
- Continue with the Infrastructure Utilities Upgrade Project activities.
- Continue remediating contaminated soil from waste sites.