



# Weekly Progress



AMERICAN RECOVERY & REINVESTMENT ACT

Week Ending July 15, 2011



CHPRC-01415

Contract DE-AC06-08RL14788  
Modification MO47

---

# Contents

OVERVIEW .....	3
SUMMARY .....	4
ACCOMPLISHMENTS .....	5
RL-0011 Nuclear Materials Stabilization & Disposition.....	5
RL-0011.R1: Plutonium Finishing Plant D&D.....	5
RL-0013 Solid Waste Stabilization & Disposition .....	6
RL-0013C:R1.1: Mixed Low-Level Waste (MLLW)/Low-Level Waste (LLW) Treatment .....	6
RL-0013C:R1.2: Transuranic (TRU) Waste .....	11
RL-0030 Soil & Groundwater Remediation, Groundwater/Vadose Zone.....	12
RL-0030.R1: Central Plateau Soil & Groundwater .....	12
RL-0040 Nuclear Facility D&D – Remainder of Hanford .....	13
RL-0040.R1.1: U Plant/Other D&D .....	13
RL-0040.R1.2: Outer Zone D&D/Waste Sites .....	16
RL-0041 Nuclear Facility D&D – River Corridor Closure Project.....	18
RL-0041.R1.1: 100K Area Remediation .....	18
UPCOMING EVENTS .....	21

---

## OVERVIEW

CH2M HILL Plateau Remediation Company (CHPRC) is using funds from the American Recovery and Reinvestment Act (Recovery Act) to accelerate critical environmental cleanup across the Central Plateau and the 100K Area along the Columbia River to help pursue the U.S. Department of Energy (DOE) “2015 Vision” to shrink the Hanford Site cleanup footprint.

### RL-0011 PLUTONIUM FINISHING PLANT D&D

CHPRC is accelerating critical decontamination and decommissioning work to cleanout and prepare the Plutonium Finishing Plant (PFP) for demolition ahead of the Tri-Party Agreement milestone of September 2016.

### RL-0013 SOLID WASTE STABILIZATION & DISPOSITION

CHPRC is accelerating cleanup of Hanford’s legacy waste and fuels, including retrieving, repackaging, and shipping transuranic (TRU) waste and shipping mixed low-level waste (MLLW) and low-level waste (LLW) for treatment and/or disposal.

### RL-0030 SOIL & GROUNDWATER REMEDIATION

In the ongoing effort to protect the Columbia River, CHPRC is constructing two groundwater treatment facilities; installing 265 wells for monitoring, extracting, and remediating groundwater; and decommissioning 280 wells that are no longer of service.

### RL-0040 NUCLEAR FACILITY D&D REMAINDER OF HANFORD

Across the Central Plateau and along the outer zone of the Hanford Site, CHPRC is remediating 24 waste sites and decommissioning and demolishing (D&D) 34 facilities to reduce mortgage, surveillance, and maintenance costs on buildings that are no longer of service. The scope also includes cleanup along the outermost edges of the Hanford Site at the Arid Lands Ecology (ALE) Reserve and North Slope, preparing the U Plant for a first-of-its-kind canyon demolition, and preparing to disposition radioactive railcars in the 200 North Area.

### RL-0041 100K AREA REMEDIATION

CHPRC is demolishing 15 reactor support facilities and sampling and/or remediating 23 waste sites to shrink the cleanup footprint of two reactors, K East and K West, located in the 100K Area along the Columbia River.

## For More Information

To find out more about Recovery Act progress at the Hanford Site, visit [www.hanford.gov/recovery](http://www.hanford.gov/recovery).

For information about CHPRC, including weekly Recovery Act newsletters and videos, visit [www.plateauremediation.hanford.gov](http://www.plateauremediation.hanford.gov) or contact [chprcc@rl.gov](mailto:chprcc@rl.gov).

## SUMMARY

The following chart outlines CHPRC’s progress on its main Recovery Act work goals. Progress on subprojects and other Recovery Act-funded activities are detailed throughout this report and accompanied by a short progress video available on [www.youtube.com/hanfordplateau](http://www.youtube.com/hanfordplateau).

### PLUTONIUM FINISHING PLANT D&D



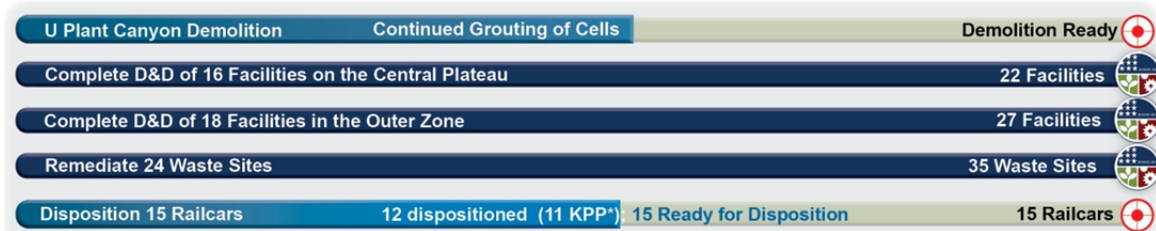
### SOLID WASTE STABILIZATION & DISPOSITION



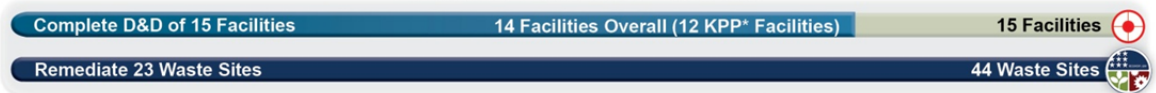
### SOIL & GROUNDWATER REMEDIATION



### NUCLEAR FACILITY D&D



### 100K AREA REMEDIATION



\*Key Performance Parameters (KPP) are specific items (wells, buildings, etc.) included in the Target. "Overall" indicates the total number completed with Recovery Act funds. "Completed" marks that CH2M HILL has completed a KPP.

## ACCOMPLISHMENTS

### RL-0011 Nuclear Materials Stabilization & Disposition

#### RL-0011.R1: Plutonium Finishing Plant D&D

ACTIVITY	PFP WASTE REMOVAL & DISPOSITION	
	<i>Week of July 15, 2011</i>	<i>Completed to Date with Recovery Act Funding</i>
KPP-1, Lab & Process Areas Ready for Demo		
Gloveboxes/hoods removed or dispositioned in place	1	130 gloveboxes/hoods
Add'l gloveboxes ready for removal/size reduction	-	1 gloveboxes/hoods
MLLW/LLW shipped	25 m <sup>3</sup>	2,736 m <sup>3</sup>
TRU shipped	7 m <sup>3</sup>	641 m <sup>3</sup>
Non-radioactive waste shipped	-	26 m <sup>3</sup>
Process transfer line removed	-	491 feet
Process vacuum system piping removed	-	1,210 feet
Asbestos removed	185 ft	14,647 feet
KPP-2 Fuel Vaults, Buildings Ready for Demo		
Fuel vaults and ancillary buildings ready for demo	-	25 structures
Ancillary buildings/structures removed or demolished	-	20 structures

The PFP Closure Project has now completed more than one year without a lost workday case, accumulating 382 days and 1.8 million hours worked safely since the last lost time injury.

#### *Process and Laboratory Areas*

Removal of a wall and doorway on the perimeter of room 188 of the Plutonium Process Support Laboratory (PPSL) was completed, and glovebox 188-1 was removed from the room for non-destructive assay and turnover to waste operations for disposal. This completes the removal of all 116 gloveboxes and hoods once installed in the three PFP laboratories and the backside vault rooms of 234-5Z building; 97, or 84% of these were completed with ARRA funding. Final area cleanout continued in PPSL, the Analytical Laboratories and the backside vault rooms. Seven rooms were inspected and verified complete for the KPP, including one in PPSL, three in A-Labs, and three vault rooms.

External isolations and process equipment removal are continuing in parallel on numerous gloveboxes in Rooms 227, 228ABC, and 230AB of the RMC Line, and rooms 235A-1, A-2, A-3 and 235B in RMA Line. A large airlock was removed from the west end of the HC-2 conveyor, enabling work to begin on preparing the 60' long conveyor glovebox for removal from Rooms 230A, 230B and 228C. Size reduction and removal of the conveyor system and other equipment is also ongoing in the 75' long HC-1 conveyor that runs through Rooms 228A, 228B and 228C. Another team continued D&D of gloveboxes HA-14S, P and DC, which are expected to be removed within the next few weeks. Chemical decontamination continued throughout the week on the massive HA-23S glovebox in Room 235B, the last glovebox to be removed from building ventilation in this large area of the plant.

#### *Infrastructure, support systems, and equipment removal*

Approximately 185 feet of asbestos insulation was removed during the week, bringing the total removed with ARRA funds to more than 14,600 feet. All previously removed process vacuum system and process transfer line piping has now been size reduced and packaged for transfer to solid waste operations for disposal as transuranic waste. Work to remove additional process piping and asbestos insulation in the 234-5Z building remains on hold in favor of higher priority KPP work scope in the process and lab areas, although preparations to restart work are continuing. Five waste shipments from PFP were completed this week, including 25 cubic meters of LLW and mixed LLW shipped to ERDF, 12 drums of recycle

waste shipped to the Consolidated Recycling Center, and four Standard Waste Boxes containing 7 cubic meters of transuranic waste shipped to WRAP.

*2736-Z/ZB Vault Complex*

The vault complex D&D staff continued support to the CHPRC D&D Project as walk downs continued to air gap and verify the Cold and Dark status of the facilities and complete final preparations for demolition of the four vault complex structures and two adjacent ancillary buildings. The crews are also temporary lighting and temporary shields/shield walls to protect other equipment and facilities near the vault complex during demolition. Demolition of the first structure is expected to begin late next week.



Photo 1

*Protective covers were constructed for the air-intakes for the Plutonium Process Support Laboratories Annex to prevent debris and dust from damaging the units during demolition of the Vault Complex.*

**RL-0013 Solid Waste Stabilization & Disposition**

RL-0013C:R1.1: Mixed Low-Level Waste (MLLW)/Low-Level Waste (LLW) Treatment

ACTIVITY

Ship 1,800 m<sup>3</sup> of MLLW/LLW for treatment and disposal

SOLID WASTE STABILIZATION & DISPOSITION

*Total Completed with Recovery Act funds*

- 1,817 m<sup>3</sup> shipped
  - 1,360 m<sup>3</sup> treated and disposed
  - 457 m<sup>3</sup> at offsite treatment facilities awaiting processing. Treatment is scheduled for FY11

Six shipments were made to Perma-Fix Northwest (PFNW) this week for processing. Four shipments (56.1 m<sup>3</sup>) of MLLW debris from the Waste Retrieval Project (WRP) were sent to PFNW for treatment through macro-encapsulation. One shipment (1.8 m<sup>3</sup>) of MLLW debris from the Central Waste Complex (CWC) was also sent to PFNW to undergo macro-encapsulation. Another shipment (6.7 m<sup>3</sup>) from CWC containing LLW debris was sent to PFNW for volume reduction and radiological stabilization. The processed waste from all six shipments will be returned to the Hanford Site for disposal in the mixed waste disposal units.



Photo 2

Workers load a box of mixed low-level waste into a shipping container. The waste will be treated at Perma-Fix Northwest through macro-encapsulation.



Photo 3

*Hanford workers finish loading the MLLW box into the shipping container and begin to secure the box in place to minimize movement during transportation.*





Photo 4

Workers lift the waste package onto the base of the Super 7A shipping container. This box contains mixed low-level waste debris in a deteriorated wooden box that was reinforced with structural material for safer transportation.



Photo 5

Workers cover the waste box with the top cover of the Super 7A shipping container. Once the top cover is tightened the waste box will be shipped to Perma-Fix Northwest for treatment through macro-encapsulation.



Photo 6

Small boxes of mixed low-level waste from the Waste Retrieval Project are loaded on a flatbed trailer as the shipper and driver review and sign the shipping papers prior to the waste leaving the Hanford Site for treatment at Perma-Fix Northwest.

### RL-0013C:R1.2: Transuranic (TRU) Waste

ACTIVITY	SOLID WASTE STABILIZATION & DISPOSITION
Retrieve 2,500 m <sup>3</sup> of suspect TRU waste	<i>Total Completed with Recovery Act funding</i>
Retrieve 50 m <sup>3</sup> of suspect remote-handled TRU waste	<ul style="list-style-type: none"> <li>• 389 m<sup>3</sup> are staged, pending shipment</li> <li>• 1,655 m<sup>3</sup> shipped to a treatment, storage, or disposal facility</li> <li>• 4 m<sup>3</sup> are staged, pending shipment.</li> <li>• 84 m<sup>3</sup> shipped to a treatment, storage, or disposal facility</li> </ul>

At Trench 17 of the 3A burial ground, workers shipped Box 15 (32.6 m<sup>3</sup>) in the Super 7A container to PFNW.

At Trench 11 of the 4B burial ground, workers continued hand and mechanical excavation to expose the remaining containers needing to be removed from the trench and two metal containers (15.2 m<sup>3</sup>) were removed. One metal container (4.8 m<sup>3</sup>) was shipped to PFNW, three metal boxes (30.7 m<sup>3</sup>), one remote-handled (RH) container (a metal box) and three concrete boxes (2.5 m<sup>3</sup>) were shipped to CWC. The re-

disinfection of the Mobile Radioactive Decontamination Unit was completed following repairs on the potable water system. At the 4C Process Area, the portable assay of 11 containers and miscellaneous trench debris was completed.

At the 12B burial ground, eight filter boxes (8.2 m<sup>3</sup>) were removed, 90 LLW drums were shipped in 15, 8 x 4 x 4 foot waste boxes (18.7 m<sup>3</sup>) to PFNW. Workers loaded 14 standard waste boxes with TRU waste drums for shipment to CWC. Seven drums were vented, the headspace gas was sampled on 13 drums and 116 drums were assayed in the Gamma Assay System.

### TRU Repackaging & Shipments

ACTIVITY	SOLID WASTE STABILIZATION & DISPOSITION <i>Total Completed with Recovery Act funding</i>
Repackage 850 m <sup>3</sup> of WIPP certifiable TRU waste	• 1,007 m <sup>3</sup> have been repackaged
Disposition 2,000 m <sup>3</sup> of contacted-handled TRU waste	• 1,875 m <sup>3</sup> have been disposed

A total of 13 drums were repackaged at T Plant this week.

TRUPACT-II shipments from the Hanford Site are paused and anticipated to resume the first week in August.

## RL-0030 Soil & Groundwater Remediation, Groundwater/Vadose Zone

### RL-0030.R1: Central Plateau Soil & Groundwater

ACTIVITY	Week of July 15, 2011	Complete to Date with Recovery Act funds
Install 265 wells and/or boreholes along the river and in the Central Plateau	--	303
Decommission 280 old wells and boreholes that are no longer of service	0 wells completed	279
Construct the 200 West Groundwater Treatment Facility	82% complete	

### 200 West Groundwater Treatment Facility

Recent construction of the process and transfer facilities included (listed by facility):

- *Process buildings*
  - Radiological Building: Ongoing activities include instrumentation and controls rough-in; continued mechanical overhead piping installation and installation of epoxy anchor bolts, initiation of hydrotesting; torquing main feeders and installation of transformer as well as piping penetrations in the metal grating continues.
  - Bio-Process Building: In process work continues for all disciplines: Instrumentation and controls rough in continues; electrical panels and switchgear, fire alarm, overhead lighting and pulling wire, and installation of exterior transformers continued prep for setting main switch gear and rough in in the administration area. Continued installation of C and A-line utility racks; installation of process piping; sprinkler system riser room installation; HVAC ductwork installation and testing. Second shift continues to focus on installation of chemical piping in the chemical area.
  - Bio Pad: Continued steel installation on the utility racks, hand rails and toe boards, grating and grouting base plates. Continued installation of vapor off gas duct work and blower equipment. Also continued installation of racks and panels, conduit, sleeves and cabling for lightning protection.

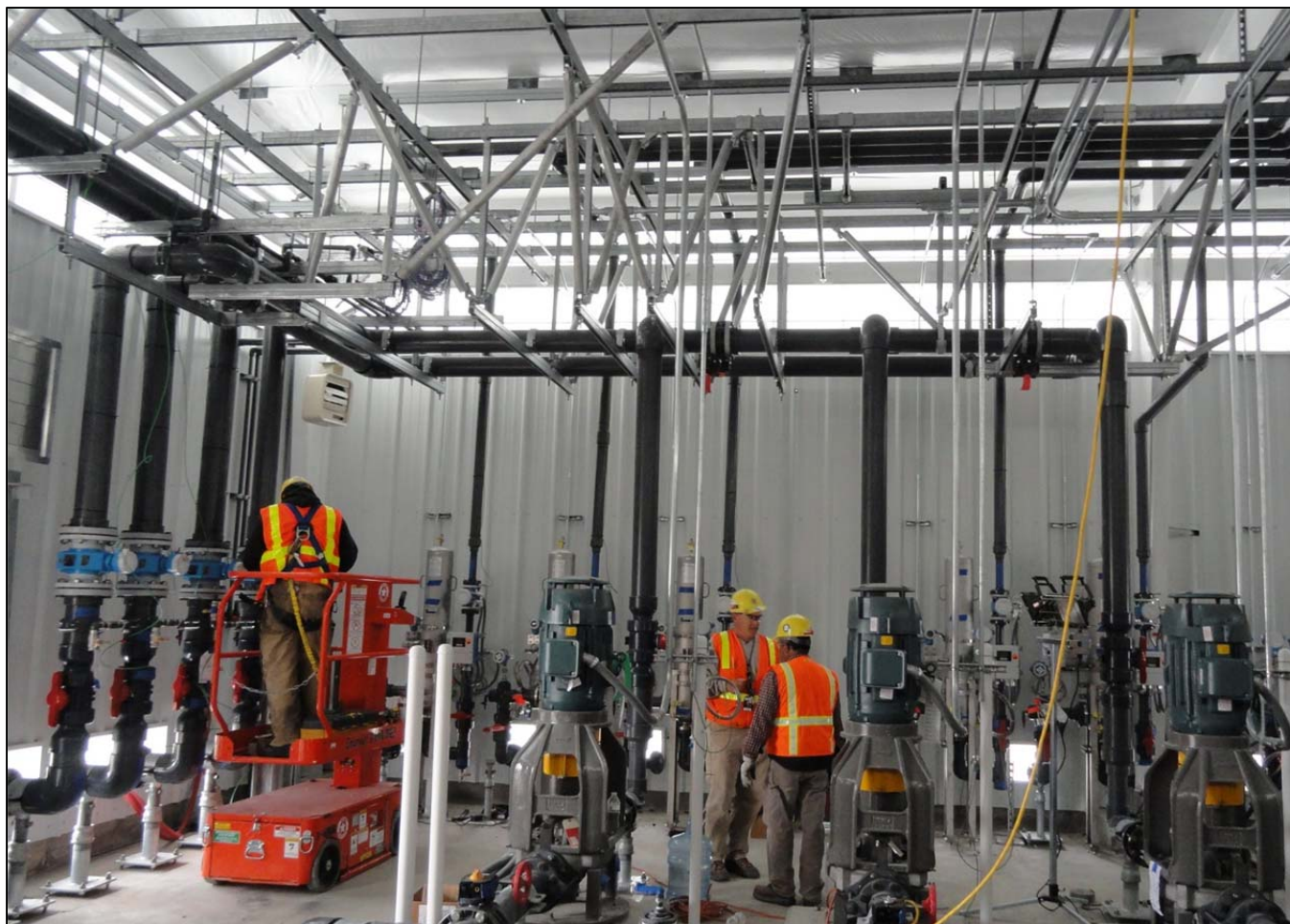


Photo 7

Construction Acceptance Testing continues at 200 West Groundwater Treatment Facility Extraction Building #2. Extraction Building #1 Construction Acceptance Testing is now completed.

#### Transfer buildings

- Extraction Building #1: Acceptance Test Procedure continued. Completed Construction Acceptance Testing.
- Extraction Building #2: Continued Construction Acceptance Testing.
- Injection Building #1: Construction punchlist items continued. Continued Construction Acceptance Testing.
- Injection Building #2: Lock-out/Tag-out for electrical utility connection; start installation of electrical service, installation of piping systems, anchor bolts and grouting of pipe supports.

## RL-0040 Nuclear Facility D&D – Remainder of Hanford

RL-0040.R1.1: U Plant/Other D&D

#### CENTRAL PLATEAU FACILITIES DEMOLISHED WITH RECOVERY ACT FUNDS

- 211U Cold Chemical Makeup Tank Farm
- 211UA Cold Chemical Makeup Tank Farm Addition
- 203UX Gas Storage Facility
- 2701M Office Bldg
- 2734EA Gas Cylinder Storage Bldg
- 275E Carpenter Shop Bldg
- MO104 Mobile Office
- MO405 Mobile Office

#### PLANNED FOR D&D/IN PROGRESS

- 209E Critical Mass Laboratory
- 284W Power House & Steam Plant
- 2718E 209E Fissile Material Storage\*

- 272E Fabrication, Mockup Shop Bldg
- 2716E Power Maintenance Storage Bldg
- 2722W Welding Laboratory Bldg
- 224UA UO3 Calcination/Load-out Facility
- 2710W Coal Handlers Shed\*
- 2701EC 209E Guard Station\*
- 2902E Water Storage Tank\*
- M0840 Mobile Office
- X8 Motor Car Shed
- 224U UO3 Plant Concentration/Load-out Bldg
- 284WB Package Boiler Plant
- 209EA 90 Day Storage Pad\*
- 2902W Water Storage Tank\*
- 284E Power House & Steam Plant

TOTAL:170,926 square feet

\*Not part of the Key Performance Parameter

### *U Canyon*

Crews with CHPRC subcontractors AGEC and Central Pre-Mix continued filling U Canyon cells with grout, delivering another 534 cubic yards of grout into U Canyon cells. CHPRC has now poured 5,643 cubic yards of grout out of a planned total of 20,318, or approximately 27.8 percent.

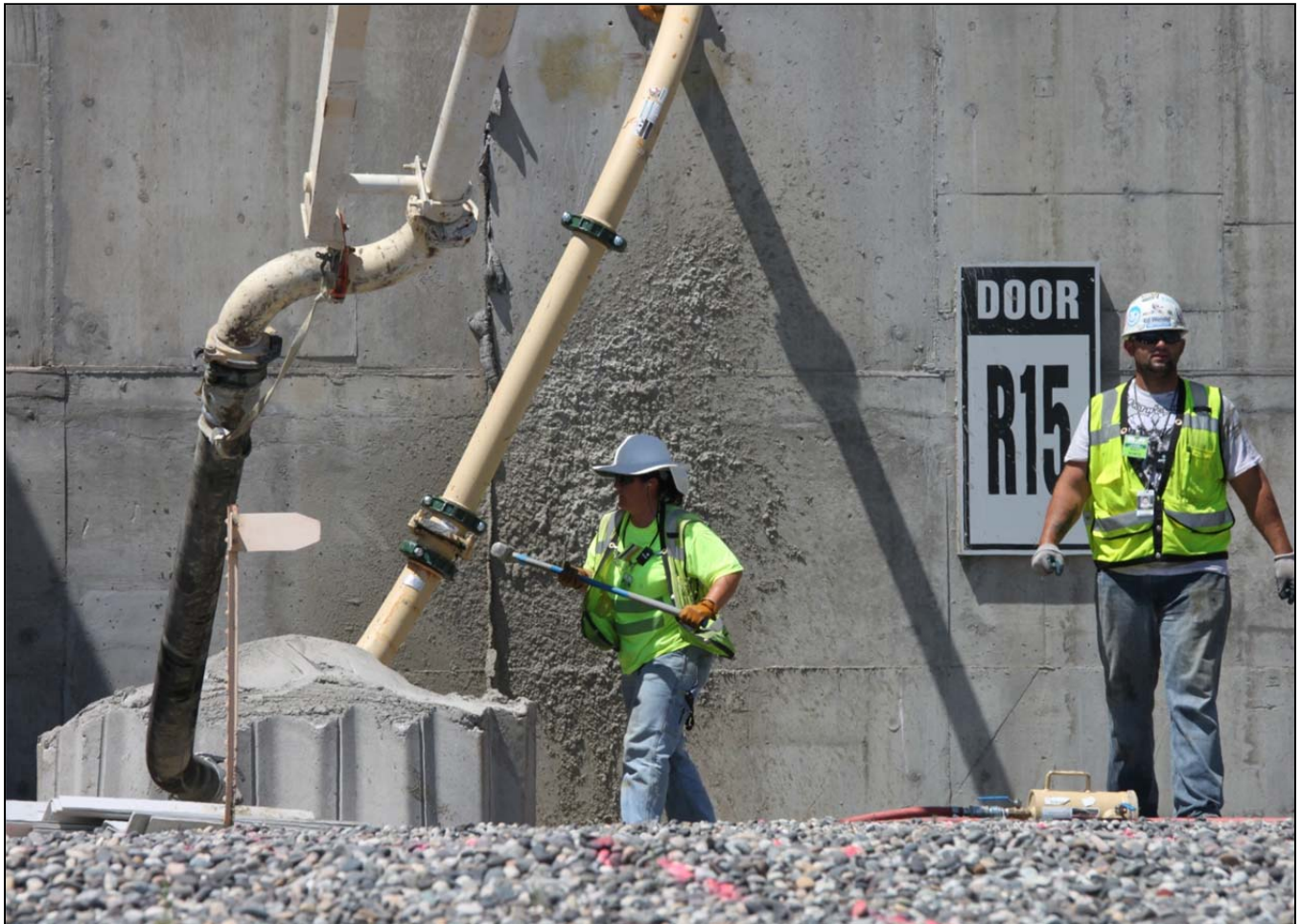


Photo 8

Workers with CHPRC subcontractors AGEC and Central Pre-Mix tighten the seal on a grout delivery tube before beginning a pour. CHPRC continues to fill U Canyon cells with grout, with another 534 cubic yards of grout poured for a total of 5,643 cubic yards of a planned 20,318 – approximately 27.8 percent.

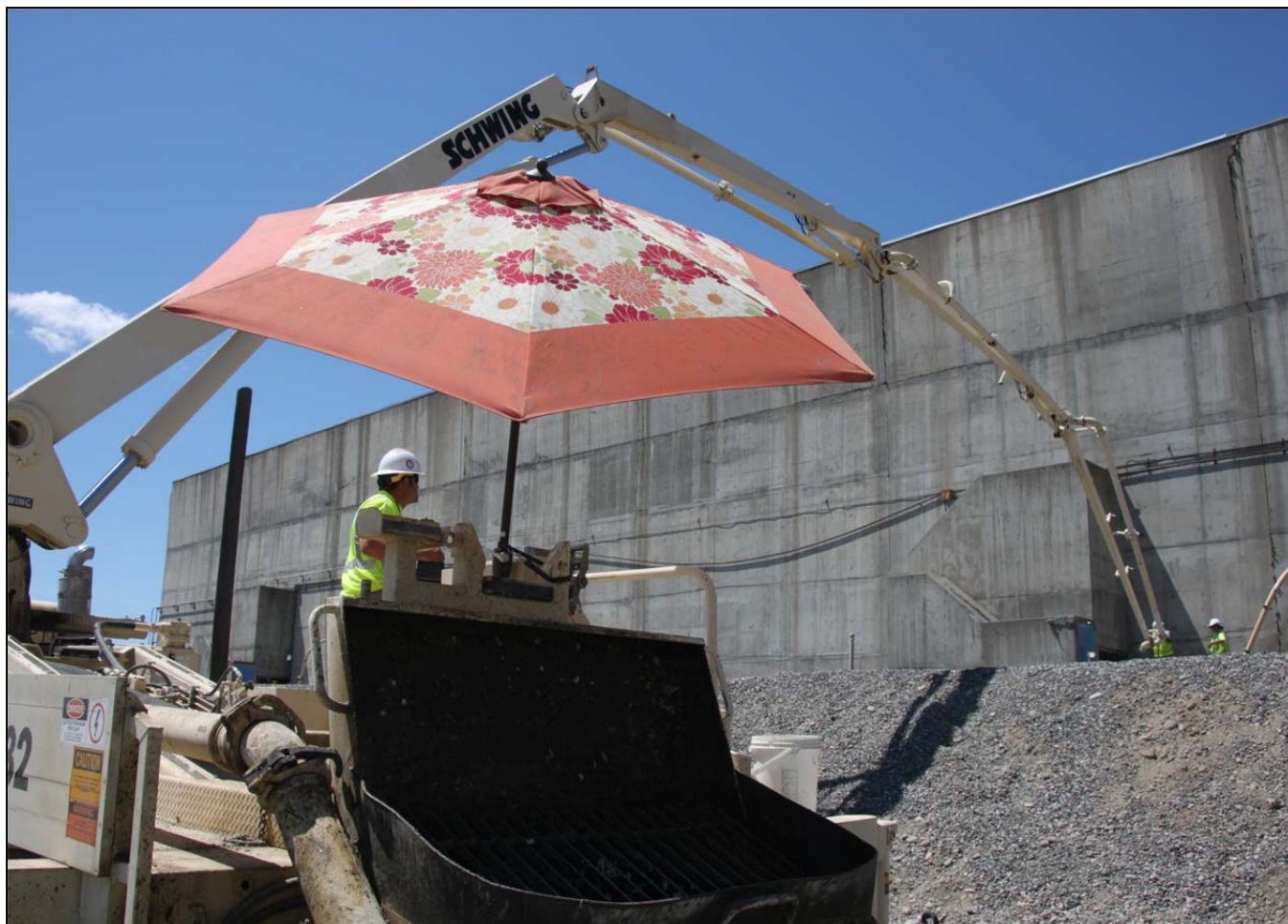


Photo 9

A worker with CHPRC subcontractor Central Pre-Mix stays safely cool while readying a grout pour. CHPRC is filling Canyon cells with grout and preparing the building for eventual demolition.

#### *U Plant Ancillary Facilities*

Closure documentation is being prepared.

#### *200 East Core Industrial Area*

Processing and loadout of debris from the 284-E Power House demolition site is complete.

#### *200 West Area Industrial Facilities*

Asbestos abatement continued inside the 284-W Power House building in a mass containment on the structure's second, third and fourth floors.

#### *209-E Criticality Mass Laboratory*

CHPRC crews continue to size-reduce and remove slab tanks from the 209-E facility, with Tanks 101-103 size-reduced and removed from the facility and Tank 104 removal underway. Upon removal of all 11 tanks, the 209-E facility can be downgraded to a Less Than Hazard Category 3 (non-nuclear) facility and demolished by September 30, 2011.



Photo 10

CHPRC workers use the tank-cutting "shroud" they developed with safety personnel to size-reduce another slab tank in the 209-E Critical Mass Laboratory, with Tanks 101-103 now size-reduced and removed from the facility and Tank 104 removal underway. The "shroud" contains all cutting operations within a negative-air containment and cut parts of the tank can be safely bagged and disposed of.

## RL-0040.R1.2: Outer Zone D&D/Waste Sites

### OUTER ZONE FACILITIES DEMOLISHED WITH RECOVERY ACT FUNDS

212N Storage Building	6652M Fallout Laboratory
212P Electrical Storage & Transformer Shop	6652R Acid Storage Shed
212R Storage Building	6652C Space Science Laboratory
614 Monitor Station	6652CSHED Storage Building
646 Radioecology Field Laboratory	6652D Pump House
6652G ALE Field Storage Building	6652T Fire Protection Lower Pump House
6652H ALE Laboratory 1	6652U Rattlesnake Mountain Upper Pump House
6652I ALE Headquarters	623A Plant Radio Relay Bldg
6652J ALE Laboratory II	T520-6 Navy MARS Radio Station
6652S Sentry Shed*	6631 Radio Telescope Pedestal*
6634 ENW Tower and Building*	6630 Hodges Well Pumphouse*
6635 Crown Castle/Cingular Tower and Building*	6636 Columbia Communication Tower and Building*
6637 Tri City Amateur Radio Tower and Building*	6633 Franklin County Communication Building*
6632 Verizon Telephone Enclosure*	<b>TOTAL: 62,748 square feet</b>

\*Not part of the Key Performance Parameter



### *North Slope Debris Removal*

CHPRC crews have resumed cleanup in Hanford Reach National Monument Area 17 after cultural and environmental reviews of remaining debris sites were completed. Areas 12, 13, 15, 16, and 18 have been completed, with a total of 89 debris sites now remaining.

### *D&D of Railcars Located on the 212-R Rail Spur*

CHPRC crews and subcontractors Clauss Construction and Barnhart Crane removed two double-shelled tanker cars from the 212-N site, delivering them to the Environmental Restoration Disposal Facility (ERDF) for disposal. One tall cask well car (pictured in background) remains on site and will be delivered to B Reactor for preservation and display.



Photo 11

CHPRC workers and subcontractors with Clauss Construction and Barnhart Crane prepare a double-shelled tanker railcar for delivery to the Environmental Resoration Disposal Facility (ERDF). One tall cask well car remains (pictured in background) to be delivered to B Reactor to join three other railcars for preservation and public display.

*Waste Sites*

The following table showcases CHPRC's recent progress in outer zone waste remediation.

WASTE SITE IN PROGRESS	TONS OF CONTAMINATED SOIL REMOVED	
	<i>Week Ending July 14, 2011</i>	<i>Total to Date with Recovery Act funds</i>
BC Control Area	8,000	~482,000

Recent activities regarding the outer zone waste sites included (listed by operable unit or site):

- *200-MG-1*
  - 600-228: Excavation of residual contamination was completed this week with verification sampling planned for next week.
  - 600-281: Excavation is complete and the second round of verification sampling is planned within the next week.
  - 216-S-19: Verification sampling is complete with preliminary results expected by the end of July 2011.
  - 216-S-26: Re-sampling at the request of the Regulators due to tritium analysis discrepancy, has been completed with results expected within one week. Down posting and backfill operations are planned to commence within the next week.
  - 200-W-147-PL: Backfill of the entire pipeline to the manhole is complete.
  - 600-49: Initial excavation field activities are complete. Verification sample results have been received and are below cleanup criteria.
- *BC Control Area*
  - Radiological down-post surveys and localized spot removal are ongoing.

## RL-0041 Nuclear Facility D&D – River Corridor Closure Project

### RL-0041.R1.1: 100K Area Remediation

100K AREA FACILITIES DEMOLISHED WITH RECOVERY ACT FUNDS		PLANNED FOR D&D/IN PROGRESS	
• 183KW Chlorine Vault	• 116KE Reactor Exhaust Stack	• 183.4KW Clearwell	• 110KW Gas Recirculation
• 183.1KW Headhouse	• 118KE Horizontal Control Rod Storage	• 183.4KE Clearwell	• 181KW River Pump House
• 183.2KW Sedimentation Basin	• MO048 Construction Lunch Trailer	• 190KW Main Pump House	• 183.3KE Filter Basin
• 183.3KW Filter Basin	• MO969 Ops/HPT Change Trailer	• 190KE Main Pump House	
• 183.7 KW Pipe Tunnel	• 115KE Gas Recirculation	• 181KE River Pump House	
• 110KE Gas Storage Facility	• 185-K Potable Water Treatment Plant*	• 1605KE Guard House	
• 117KE Exhaust Air Filter Bldg		• 183.1KE Headhouse	
	<b>TOTAL: 428, 260 square feet</b>		

*Facility D&D*

Demolition is near completion on the 181-KW River Pumphouse Structure, and began on the 181-KE River Pumphouse. Work also continued on the east and west sides of the 183.3-KE Filter Basins, and below-grade portions of the 183.1-KE Headhouse.



Photo 12

*Demolition continues on the east side of the 183.3-KE Filter Basin structure, part of the 183-KE Sedimentation Basins that once held 19 million gallons of water for passage through the K East Reactor.*



Photo 13

*Demolition continues on the 181-KE River Pumphouse intake structure, which once pulled more than 200,000 gallons of Columbia River water per minute into the K East Reactor system.*

#### *Infrastructure Utilities Upgrade Project*

All 100K Area Infrastructure Projects are complete and operational.

#### *Waste Sites*

100-K-79 waste site (Sodium Dichromate and Sulfuric Acid Product Pipelines at 100-K): Confirmatory Sample instruction was approved June 29, 2011. Confirmatory sampling began July 13, 2011.

## UPCOMING EVENTS

### RL-0011 Nuclear Materials Stabilization & Disposition

RL-0011.R1: Plutonium Finishing Plant D&D

- Complete Cold and Dark certifications and initiate demolition of the 4-building PFP vault complex and two ancillary buildings.
- Complete final area cleanout in the Standards, Analytical and Plutonium Process Support Laboratory areas and the 234-5Z vault rooms.
- D&D the remaining gloveboxes in the RMA/RMC Line process areas.
- Remove more than 200 contaminated HEPA filters from 234-5Z final filter rooms 311 and 316.
- Continue removing process vacuum piping, process transfer lines and asbestos insulation from throughout 234-5Z building as resources are available.

### RL-0013 Solid Waste Stabilization & Disposition

RL-0013C:R1.1: MLLW Treatment

- Two MLLW shipments (7.7 m<sup>3</sup>) planned from the WRP to PFNW.

RL-0013C:R1.2: TRU Waste

- TRU Retrieval
  - 3A burial ground
    - Ship the final box, Box 13, from Trench 17 to PFNW.
    - Ship the final box, Box 33, from Trench 8 to CWC.
    - Continue clean-up and lay-up activities at Trenches 8 and 17.
  - 4B/4C burial ground
    - Resume overburden removal in Trench 7 of the 4B burial ground.
    - Complete 4C Process Area user validation/functional test of the Mobile Drum Venting System (MDVS) procedure.
    - Vent 12 drums at the 4C Process Area MDVS and load the drums into standard waste boxes in preparation for shipment.
    - Continue portable assay of waste containers removed from Trench 11 of the 4B burial ground in the 4C Process Area.
    - Complete work package to remove Box 101 and Box W4BT11-0048 from Trench 11 of the 4B burial ground.
    - Overpack two 55-gallon drums of thorium into 85-gallon drums for shipment from Trench 11 of the 4B burial ground.
    - Complete removal of remaining planned waste containers in Trench 11 of the 4B burial ground.
    - Complete assay of removed waste containers from Trench 11 of the 4B burial ground.
  - 12B burial ground
    - Continue excavation, removal and assay of waste drums in Trench 17.
- TRU Repackaging and Shipments
  - No planned shipments.
- Suspect TRU Waste Shipments
  - One planned shipment.

### RL-0030 Soil & Groundwater Remediation, Groundwater/Vadose Zone

RL-0030.R1: Central Plateau Soil & Groundwater

- Continue construction of the 200 West Groundwater Treatment Facility.

- Continue well decommissioning.

## **RL-0040 Nuclear Facility D&D – Remainder of Hanford**

### RL-0040.R1.1: U Plant/Other D&D

- Continue pouring grout into U Canyon cells.
- Continue size-reduction of slab tanks inside the 209-E Criticality Mass Laboratory.
- Continue asbestos abatement inside the 284-W Power House.

### RL-0040.R1.2: Outer Zone D&D/Waste Sites

- Deliver the final railcar, a tall cask well car, to B Reactor for preservation and display.
- Continue planning for and remediating 200-MG-1 waste sites.

## **RL-0041 Nuclear Facility D&D – River Corridor Closure Project**

### RL-0041.R1.1: 100K Area Remediation

- Continue demolition of 181-KE River Pumphouse.
- Continue demolition and loadout of the 183.3-KE Filter Basins.
- Continue excavating soil from and planning for remediation of 100K Area waste sites.