



Weekly Progress



AMERICAN RECOVERY & REINVESTMENT ACT

Week Ending June 3, 2011



CHPRC-01409

Contract DE-AC06-08RL14788
Modification MO47

Contents

OVERVIEW.....	3
SUMMARY.....	4
ACCOMPLISHMENTS.....	5
RL-0011 Nuclear Materials Stabilization & Disposition.....	5
RL-0011.R1: Plutonium Finishing Plant D&D.....	5
RL-0013 Solid Waste Stabilization & Disposition.....	6
RL-0013C:R1.1: Mixed Low-Level Waste (MLLW)/Low-Level Waste (LLW) Treatment.....	6
RL-0013C:R1.2: Transuranic (TRU) Waste.....	7
RL-0030 Soil & Groundwater Remediation, Groundwater/Vadose Zone.....	11
RL-0030.R1: Central Plateau Soil & Groundwater.....	11
RL-0040 Nuclear Facility D&D – Remainder of Hanford.....	13
RL-0040.R1.1: U Plant/Other D&D.....	13
RL-0040.R1.2: Outer Zone D&D/Waste Sites.....	16
RL-0041 Nuclear Facility D&D – River Corridor Closure Project.....	17
RL-0041.R1.1: 100K Area Remediation.....	17
UPCOMING EVENTS.....	19

OVERVIEW

CH2M HILL Plateau Remediation Company (CHPRC) is using funds from the American Recovery and Reinvestment Act (Recovery Act) to accelerate critical environmental cleanup across the Central Plateau and the 100K Area along the Columbia River to help pursue the U.S. Department of Energy (DOE) “2015 Vision” to shrink the Hanford Site cleanup footprint.

RL-0011 PLUTONIUM FINISHING PLANT D&D

CHPRC is accelerating critical decontamination and decommissioning work to cleanout and prepare the Plutonium Finishing Plant (PFP) for demolition ahead of the Tri-Party Agreement milestone of September 2016.

RL-0013 SOLID WASTE STABILIZATION & DISPOSITION

CHPRC is accelerating cleanup of Hanford’s legacy waste and fuels, including retrieving, repackaging, and shipping transuranic (TRU) waste and shipping mixed low-level waste (MLLW) and low-level waste (LLW) for treatment and/or disposal.

RL-0030 SOIL & GROUNDWATER REMEDIATION

In the ongoing effort to protect the Columbia River, CHPRC is constructing two groundwater treatment facilities; installing 265 wells for monitoring, extracting, and remediating groundwater; and decommissioning 280 wells that are no longer of service.

RL-0040 NUCLEAR FACILITY D&D REMAINDER OF HANFORD

Across the Central Plateau and along the outer zone of the Hanford Site, CHPRC is remediating 24 waste sites and decommissioning and demolishing (D&D) 34 facilities to reduce mortgage, surveillance, and maintenance costs on buildings that are no longer of service. The scope also includes cleanup along the outermost edges of the Hanford Site at the Arid Lands Ecology (ALE) Reserve and North Slope, preparing the U Plant for a first-of-its-kind canyon demolition, and preparing to disposition radioactive railcars in the 200 North Area.

RL-0041 100K AREA REMEDIATION

CHPRC is demolishing 15 reactor support facilities and sampling and/or remediating 23 waste sites to shrink the cleanup footprint of two reactors, K East and K West, located in the 100K Area along the Columbia River.

For More Information

To find out more about Recovery Act progress at the Hanford Site, visit www.hanford.gov/recovery.

For information about CHPRC, including weekly Recovery Act newsletters and videos, visit www.plateauremediation.hanford.gov or contact chprcc@rl.gov.

SUMMARY

CH2M HILL PLATEAU REMEDIATION COMPANY

PROGRESS UPDATE



June 7, 2011

The following chart outlines CH2M HILL's progress on some of its main Recovery Act work goals. For information about CH2M HILL's overall progress, including weekly Recovery Act reports and videos, visit www.plateauremediation.hanford.gov or contact chprcc@rl.gov.

PLUTONIUM FINISHING PLANT D&D



SOLID WASTE STABILIZATION & DISPOSITION



SOIL & GROUNDWATER REMEDIATION



NUCLEAR FACILITY D&D



100K AREA REMEDIATION



*Key Performance Parameters (KPP) are specific items (wells, buildings, etc.) included in the Target. "Overall" indicates the total number completed with Recovery Act funds. "Completed" marks that CH2M HILL has completed a KPP.

CHPRC1106-01

ACCOMPLISHMENTS

RL-0011 Nuclear Materials Stabilization & Disposition

RL-0011.R1: Plutonium Finishing Plant D&D

ACTIVITY	PFP WASTE REMOVAL & DISPOSITION	
	Week of June3, 2011	Completed to Date with Recovery Act Funding
Gloveboxes/hoods removed or dispositioned in place	-	124 gloveboxes/hoods
Add'l gloveboxes ready for removal/size reduction	-	2 gloveboxes/hoods
MLLW/LLW shipped	7 m ³	2,658 m ³
TRU shipped	16 m ³	593m ³
Non-radioactive waste shipped	-	24 m ³
Process transfer line removed	-	491 feet
Process vacuum system piping removed	-	1,210 feet
Asbestos removed	-	14,329 feet

Process and Laboratory Areas

General area cleanout is complete in the Radioactive Acid Digestion Test Unit (RADTU) process area and is continuing in the Analytical Laboratories. Area cleanout in the Standards Laboratory is on hold awaiting development of a new Beryllium Work Permit that better supports the planned work scope.

In the Plutonium Process Support Laboratory (PPSL), D&D continued on glovebox 179-1, the last glovebox in the laboratory connected to building ventilation. Work was also completed to support the relocation of previously isolated glovebox 188-1, including removing the legs and support brackets and lowering the remainder of the box onto lift tables. Transfer of the glovebox to waste operations is awaiting relocation of electrical circuits to support enlarging the doorway out of the room.

In the RMA Line, a new straight graveyard shift was implemented on June 1 to expand the number of teams working in this tight area. Preparations continued to isolate four previously cleaned out gloveboxes from building ventilation in room 235-A1, including HA-15, HA-16L, HA-16BS and HA-16CS. Another RMA Line D&D team collected beryllium samples from within large glovebox HA-23S in room 235B, and continued preparations to degrease the box prior to initiating chemical decontamination with Aspigel. Electrical isolations have been completed in room 235-A3.

2736-Z/ZB Vault Complex

The PFP Vault D&D Team continued removing filters from throughout the vault complex, along with removal and size reduction of ventilation ductwork too contaminated to be left in place for demolition. The team is preparing to fix residual contamination in the remaining ductwork by painting the interior of the ducts. With the fire systems deactivated last week, MSA has begun preparations for isolating water to the facilities, and detailed planning for final electrical isolation of the structures is nearly complete.

Infrastructure, support systems, and equipment removal

More than 23 cubic meters of radioactive waste was shipped from PFP this week, including 16 cubic meters of transuranic waste shipped to the Waste Receiving and Packaging (WRAP) facility, 7 cubic meters of LLW shipped to ERDF, and two drums of recycle waste shipped to the consolidated recycling center. Included in the shipments to WRAP were 14 drums with sections of the WT-4 and WT-5 gloveboxes from 242-Z building, and Standard Waste Boxes containing parts of the HA-22B glovebox and the final section of the HC-3 conveyor. The process transfer line removal team began installing glovebags and erecting scaffolding to support the next phase of removals, while some of the process vacuum removal team size reduced more than 45 feet of previously removed pipe. The remainder of the process vacuum removal team continued to support the vaults D&D team in removing highly

contaminated ductwork from the 2736-ZB building and with PFP Maintenance in preparing for removal of 112 contaminated HEPA filters each from deactivated filter rooms 311 and 316.



Photo 1

A shipment of transuranic waste created during Aspigel Decontamination of a PFP Glovebox is shipped out of PFP for processing and disposal.

RL-0013 Solid Waste Stabilization & Disposition

RL-0013C:R1.1: Mixed Low-Level Waste (MLLW)/Low-Level Waste (LLW) Treatment

ACTIVITY	SOLID WASTE STABILIZATION & DISPOSITION
	<i>Total Completed with Recovery Act funds</i>
Ship 1,800 m ³ of MLLW/LLW for treatment and disposal	<ul style="list-style-type: none"> • 1,645 m³ shipped <ul style="list-style-type: none"> ○ 1,194 m³ treated and disposed ○ 451 m³ at offsite treatment facilities awaiting processing. Treatment is scheduled for FY11

Three shipments of MLLW debris were shipped to Perma-Fix Northwest (PFNW) this week for treatment by macro-encapsulation. Two of the three shipments were sent from the Waste Retrieval Project (WRP) and included a shipment of 42 drums (8.7 m³) and a shipment of one large box (18.6 m³). The third shipment included one large fiberglass-reinforced plywood box (43.5 m³) from the Central Waste

Complex (CWC). The processed waste from these shipments will be returned to the Hanford Site for disposal in the mixed waste disposal units at the low-level burial grounds.



Photo 1

Hanford workers load a large fiberglass-reinforced plywood box onto the Super 7A overpack shipping container platform. The overpack shipping container consists of a base platform and a top cover. Once the box is secured on the base, the workers place the top cover over the shipping overpack. The FRP contained mixed low-level waste debris that will undergo macro-encapsulation.

RL-0013C:R1.2: Transuranic (TRU) Waste

ACTIVITY	SOLID WASTE STABILIZATION & DISPOSITION <i>Total Completed with Recovery Act funding</i>
Retrieve 2,500 m ³ of suspect TRU waste	<ul style="list-style-type: none"> • 451 m³ are staged, pending shipment • 1,294 m³ shipped to a treatment, storage, or disposal facility
Retrieve 50 m ³ of suspect remote-handled TRU waste	<ul style="list-style-type: none"> • 13 m³ are staged, pending shipment. • 72 m³ shipped to a treatment, storage, or disposal facility

At Trench 17 of the 3A burial ground, Box 23 (54.4 m³) was shipped to the CWC and trench clean-up and demobilization activities began. Box 24 (18.6 m³) was shipped from Trench 8 to PFNW.

At 4B burial ground, the 4600 Crane was moved from the 3A burial ground to the 4B burial ground to

support the critical lift removal of waste containers. A concrete box and a metal box were overpacked into 9 x 5 x 5 foot waste containers for shipment to CWC. The west end of the trench was excavated in preparation for the removal of the next five metal containers and the remaining two remote-handled (RH) waste containers.

At the 12B burial ground, 87 drums and one fiberboard box were removed from Trench 17. Forty-two LLW drums (8.7 m³) were shipped to PFNW in seven 8 x 4 x 4 foot waste containers. Excavation continued in Trench 17 to expose waste containers for removal and an additional 8 x 4 x 4 foot waste container was filled with six LLW drums each for a shipment next week. Twenty-two drums were vented in the Drum Venting System 3, eight 85-gallon drums were assayed in the Gamma Assay System and the headspace on 20 drums was sampled.



Photo 3

Low-level waste drums from the 12B burial ground are being loaded into an 8 x 4 x 4 foot waste container for shipment to Perma-Fix Northwest.



Photo 4

Two of six low-level waste drums from the 12B burial ground are in drum bags and loaded into a 8 x 4 x 4 foot waste container for shipment to Perma-Fix Northwest.

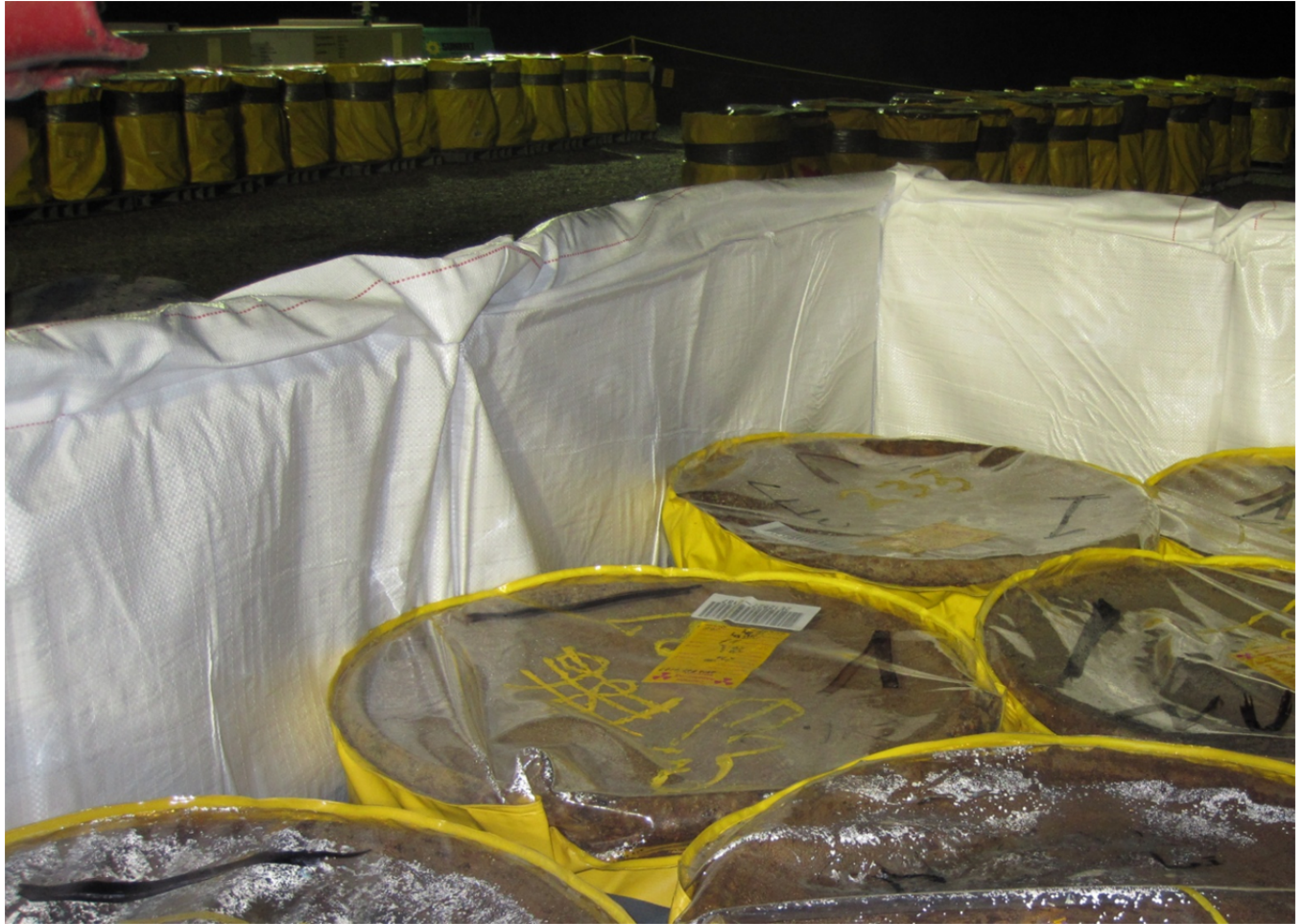


Photo 5

Six low-level waste drums from the 12B burial ground fill an 8 x 4 x 4 foot waste container. Once the lid is installed this container is ready for shipment to Perma-Fix Northwest.



Photo 6

Multiple 8 x 4 x 4 foot waste containers, each containing six low-level waste drums from the 12B burial ground, are ready for shipment to Perma-Fix Northwest.

TRU Repackaging & Shipments

ACTIVITY	SOLID WASTE STABILIZATION & DISPOSITION <i>Total Completed with Recovery Act funding</i>
Repackage 850 m ³ of WIPP certifiable TRU waste	<ul style="list-style-type: none"> • 932 m³ have been repackaged • 1,621 m³ have been disposed
Disposition 2,000 m ³ of contacted-handled TRU waste	

A total of nine drums were repackaged at T Plant this week. In conjunction with the Central Characterization Program, three TRUPACT-II shipments left the Hanford Site bound for the Waste Isolation Pilot Plant (WIPP), for a total of 191 shipments completed since shipments resumed in March 2010.

RL-0030 Soil & Groundwater Remediation, Groundwater/Vadose Zone

RL-0030.R1: Central Plateau Soil & Groundwater

ACTIVITY	<i>Week of June 3, 2011</i>	<i>Complete to Date with Recovery Act funds</i>
Install 265 wells and/or boreholes along the river and in the Central Plateau	--	303
Decommission 280 old wells and boreholes that are no longer of service	2 wells completed	254
Construct the 200 West Groundwater Treatment Facility	71% complete	

200 West Groundwater Treatment Facility

Recent construction of the process and transfer facilities included (listed by facility):

- *Process buildings*
 - Radiological Building: Ongoing activities include instrumentation and controls rough-in; process piping rough-in overhead as well as in the trenches; lighting and power conduits overhead; installation of exterior transformers; and rough-in heating, ventilation, and cooling units. Installation of steel insulation for sump pumps continued. Initiated electrical wire pulling and feeders as well as controls profibus.
 - Bio-Process Building: Installation of electrical panels, switchgear, fire alarm, lightning protection, and exterior transformers continued. Installation of the C- and A-line utility racks process piping continued. The fire protection wet system installation continued. Monorail installation in the waste handling area was completed. Installation of the windows was initiated to complete close in of administration area to start sheetrock activities. Also, initiated prep for setting main switch gear and rough in in the administration area.
 - Bio Pad: Installation of vapor off-gas ductwork and blower equipment continued as did installation of racks and panels, conduit, sleeves, cabling for lightning protection, and disconnects for an overhead crane. Installation of the overhead crane rails was completed. Initiated excavation of Z-line swell.
- *Transfer buildings*
 - Extraction Building #1: Construction acceptance testing continued.
 - Extraction Building #2: Construction acceptance testing was initiated on mechanical, electrical, and process elements of the building.
 - Injection Building #1 & #2: Installation of service gears, piping, and/or pumps continued.

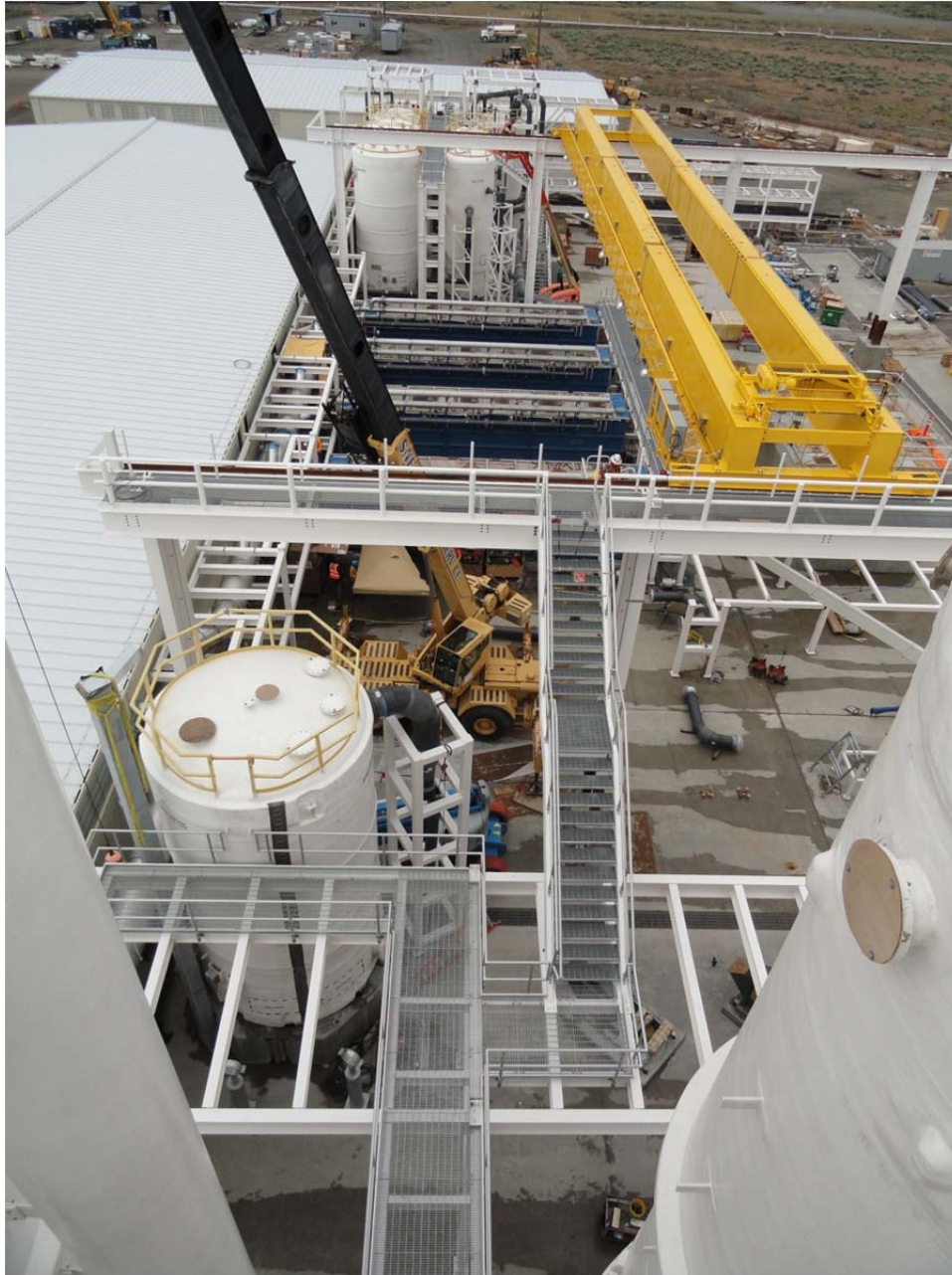


Photo 7

Overhead crane rails were installed on the 200 West Groundwater Treatment Facility Bio Equipment Pad as construction reached 71 percent completion.

RL-0040 Nuclear Facility D&D – Remainder of Hanford

RL-0040.R1.1: U Plant/Other D&D

CENTRAL PLATEAU FACILITIES DEMOLISHED WITH RECOVERY ACT FUNDS

- 211U Cold Chemical Makeup Tank Farm
- 211UA Cold Chemical Makeup Tank Farm Addition
- 203UX Gas Storage Facility
- 2701M Office Bldg
- 2734EA Gas Cylinder Storage Bldg
- 275E Carpenter Shop Bldg
- MO104 Mobile Office
- MO405 Mobile Office

PLANNED FOR D&D/IN PROGRESS

- 284E Power House & Steam Plant
- 209E Critical Mass Laboratory
- 284W Power House & Steam Plant

- 272E Fabrication, Mockup Shop Bldg
- 2716E Power Maintenance Storage Bldg
- 2722W Welding Laboratory Bldg
- 224UA UO3 Calcination/Load-out Facility
- 2710W Coal Handlers Shed*
- 2701EC 209-E Guard Station*
- 2902E Water Storage Tank*
- MO840 Mobile Office
- X8 Motor Car Shed
- 224U UO3 Plant Concentration/Load-out Bldg
- 284WB Package Boiler Plant
- 209EA 90 Day Storage Pad*
- 2902W Water Storage Tank*

TOTAL: 108,951 square feet

*Not part of the Key Performance Parameter

U Canyon

CHPRC crews have begun pouring grout into U Canyon cells, delivering approximately 300 cubic yards of grout in two pours into Cell 10 and the process drains that led to it from the canyon's other 39 cells. At 48 feet deep, Cell 10 is the deepest of the canyon cells, and beginning grout pours there will facilitate filling of canyon void spaces as grouting progresses throughout the canyon. Preparations to remove the D-10 Tank from Cell 30 also continued, with a test-fitting of the shipping cask's inner and outer lids completed.

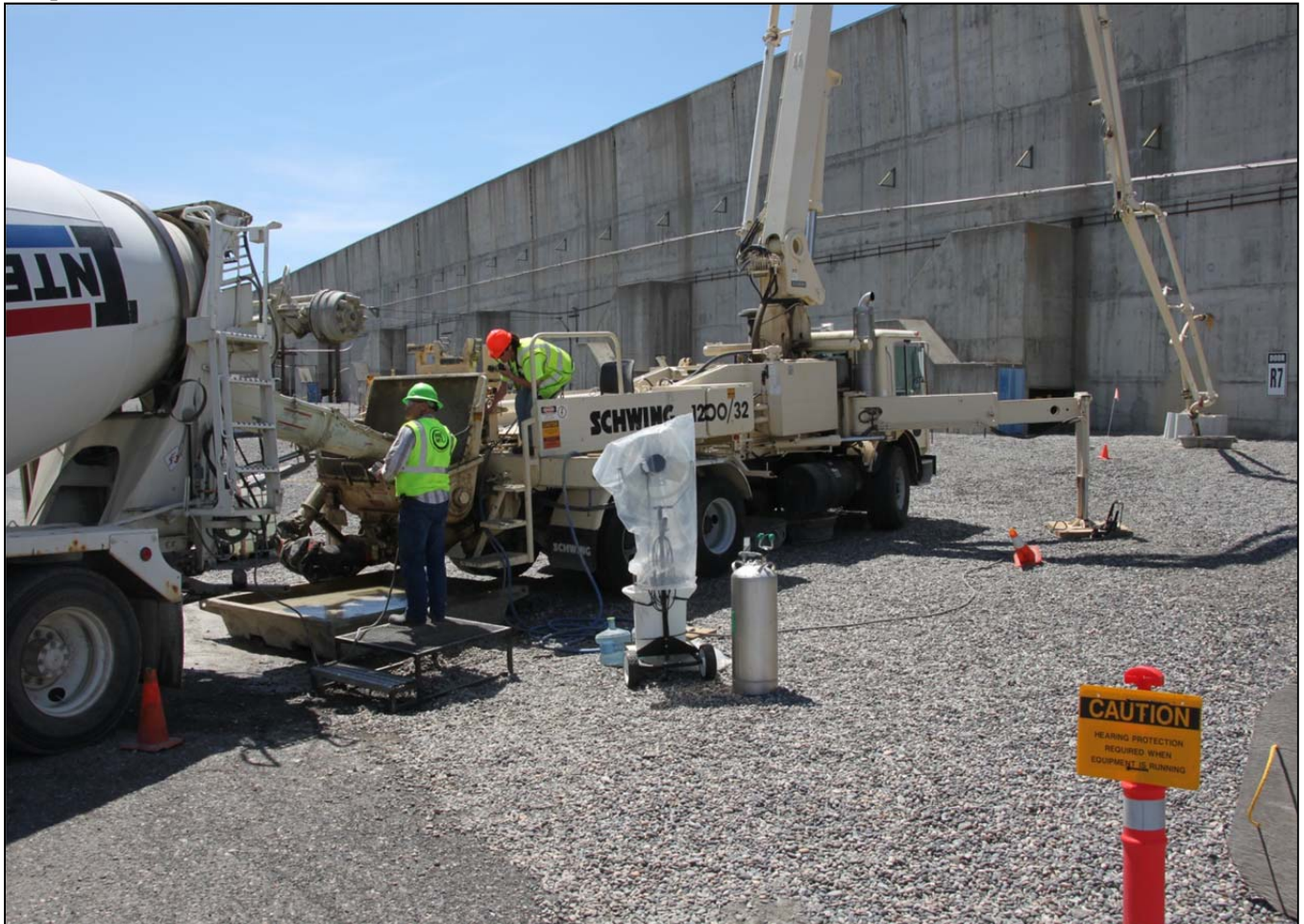


Photo 8

CHPRC crews deliver a second pour of 198 cubic yards into Cell 10, the first of U Canyon's process cells to be grouted.

U Plant Ancillary Facilities

Closure documentation is being prepared.

200 East Core Industrial Area

At the 284-E Power House demolition site, CHPRC demolition crews lowered the third of the structure's five boilers and continued processing and loading out debris from the ongoing demolition.



Photo 9

Three of five boilers have now been lowered and processed at the 284-E Power House.

200 West Area Industrial Facilities

Asbestos abatement continued inside the 284-W Power House building, with crews sealing off building ventilation to allow containment of the structure's second, third and fourth floors.

209-E Criticality Mass Laboratory

CHPRC crews began size-reduction of Tank 104, the first of 11 slab tanks in the facility that must be removed before the 209-E facility is downgraded to a Less Than Hazard Category 3 (non-nuclear) facility and ultimately demolished.

RL-0040.R1.2: Outer Zone D&D/Waste Sites

OUTER ZONE FACILITIES DEMOLISHED WITH RECOVERY ACT FUNDS

212N Storage Building	6652M Fallout Laboratory
212P Electrical Storage & Transformer Shop	6652R Acid Storage Shed
212R Storage Building	6652C Space Science Laboratory
614 Monitor Station	6652CSHED Storage Building
646 Radioecology Field Laboratory	6652D Pump House
6652G ALE Field Storage Building	6652T Fire Protection Lower Pump House
6652H ALE Laboratory 1	6652U Rattlesnake Mountain Upper Pump House
6652I ALE Headquarters	623A Plant Radio Relay Bldg
6652J ALE Laboratory II	T520-6 Navy MARS Radio Station
6652S Sentry Shed*	6631 Radio Telescope Pedestal*
6634 ENW Tower and Building*	6630 Hodges Well Pumphouse*
6635 Crown Castle/Cingular Tower and Building *	6636 Columbia Communication Tower and Building*
6637 Tri City Amateur Radio Tower and Building*	6633 Franklin County Communication Building*
6632 Verizon Telephone Enclosure*	TOTAL: 62,748 square feet

*Not part of the Key Performance Parameter

North Slope Debris Removal

Personnel with CHPRC subcontractor Sealaska Environmental Services have now completed cleanup of Areas 12, 13, 15, 16, and 18 as crews await the completion of cultural and environmental reviews of remaining debris sites.

Arid Lands Ecology Reserve

Revegetation of cleared sites on ALE is ongoing while closure documentation for removal of facilities from the area is prepared.

D&D of Railcars Located on the 212-R Rail Spur

CHPRC crews and subcontractor Clauss Construction delivered the first of the well cask cars to the Environmental Restoration Disposal Facility (ERDF) and prepared another for shipment.

Waste Sites

The following table showcases CHPRC's recent progress in outer zone waste remediation.

WASTE SITE IN PROGRESS	TONS OF CONTAMINATED SOIL REMOVED	
	Week Ending June 3, 2011	Total to Date with Recovery Act funds
BC Control Area	5,200	441,100

Recent activities regarding the outer zone waste sites included (listed by operable unit or site):

- *200-MG-1*
 - 600-40: Backfill was complete on May 26, 2011.
 - 600-218: Remediation activities are complete, contingent on sampling. Sampling results are favorable, no backfill is required. Closure paperwork is in process.
 - 600-220: Sample results are favorable. Backfill is ongoing.
 - 600-228: Initial excavation activities are complete contingent upon sample results. Sampling is anticipated to occur on June 7, 2011.
 - 600-281: Field excavation activities are complete. Verification samples are being analyzed by the lab.
 - 600-282: Backfill is ongoing and is anticipated to be complete this week.
 - 216-S-19: Direct push test sampling is complete. Laboratory results of surface sampling were analyzed revealing some elevated levels of contamination above the remedial action levels. Additional excavation was completed on June 1, 2011. Verification sampling is anticipated in early June.

- 216-S-26: Initial excavation was completed pending sample validation last week. Sampling was performed on May 25, 2011.
- 200-W-147-PL: Excavation is complete. Backfill is ongoing.
- 600-49: Initial excavation field activities are complete contingent upon sample results. Sampling is anticipated to occur on June 7, 2011.
- *BC Control Area*
 - Radiological down-post surveys and localized spot removal are ongoing.



Photo 10

Crews with CHPRC and subcontractor Class Construction load a second cask well car for delivery to the Environmental Resoration Disposal Facility for disposal.

RL-0041 Nuclear Facility D&D – River Corridor Closure Project

RL-0041.R1.1: 100K Area Remediation

100K AREA FACILITIES DEMOLISHED WITH RECOVERY ACT FUNDS

- 183KW Chlorine Vault
- 183.1KW Headhouse
- 183.2KW Sedimentation Basin
- 116KE Reactor Exhaust Stack
- 118KE Horizontal Control Rod Storage
- MO048 Construction Lunch Trailer

PLANNED FOR D&D/IN PROGRESS

- 183.4KW Clearwell
- 183.4KE Clearwell
- 190KW Main Pump House
- 181KE River Pump House
- 1605KE Guard House
- 181KW River Pump House

- | | | |
|---------------------------------|--|-------------------------|
| • 183.3KW Filter Basin | • M0969 Ops/HPT Change Trailer | • 190KE Main Pump House |
| • 183.7 KW Pipe Tunnel | • 115KE Gas Recirculation | |
| • 110KE Gas Storage Facility | • 185-K Potable Water Treatment Plant* | |
| • 117KE Exhaust Air Filter Bldg | TOTAL: 428, 260 square feet | |

*Not part of the Key Performance Parameter

Facility D&D

At the 181-KE River Pump House Structure, CHPRC crews completed size-reduction of the structure's six 39,000-pound, 65-foot-long pumps for disposal, and at the 181-KW Pump House, removed that structure's six motors and six main and auxiliary pumps. Demolition and loadout continues on the east and west sides of the 183.3-KE Sand Filters, both 120,000-square-foot 183.4-KE and 183.4-KW Clearwells, and below-ground structures at the site of the demolished 183.1-KE Headhouse.

Infrastructure Utilities Upgrade Project

The new A-9 substation is fully energized and awaiting switchover by site utilities organization.

Waste Sites

CHPRC continued excavating the 100-K-53 waste site, the 100-KE Glycol Heat Recovery Underground Pipelines, with a total of 20,899 tons removed to date. The project is awaiting sampling results for the 116-KE-1 waste site.



Photo 11

CHPRC workers use an oxygen torch to cut the casing on another of the 65-foot-long pumps removed from the 181-KE River Pump House. The pumps are being severed in half for delivery to the Environmental Restoration Disposal Facility (ERDF) for disposal.



Photo1 2

Demolition continues on the east (foreground) and west (background) sides of the 183.3-KE Sand Filters, part of the K East Sedimentation Basins that once held 19 million gallons of water for use in the K East Reactor system.

UPCOMING EVENTS

RL-0011 Nuclear Materials Stabilization & Disposition

RL-0011.R1: Plutonium Finishing Plant D&D

- Enlarge a doorway and transfer glovebox 188-1 to waste operations.
- Complete D&D and remove glovebox 179-1, the last remaining glovebox in the laboratory and backside vault areas.
- Remove or stabilize contaminated ventilation ductwork in 2736-ZB, complete electrical isolations and transfer the 2736-Z vault complex to CHPRC D&D for demolition.
- D&D the remaining gloveboxes in the RMA/RMC Line process areas.
- Complete final area cleanout in the Standards, Analytical and Plutonium Process Support Laboratory areas.
- Remove contaminated HEPA filters from 234-5Z final filter rooms 311 and 316.
- Continue removing process vacuum piping, process transfer lines and asbestos insulation from throughout 234-5Z building.

RL-0013 Solid Waste Stabilization & Disposition

RL-0013C:R1.1: MLLW Treatment

- One MLLW shipment (43.5 m³) planned from the CWC and to PFNW for treatment by macro-encapsulation.
- One MLLW shipment (10 m³) planned from WRP 12B burial ground to PFNW for treatment by macro-encapsulation.

RL-0013C:R1.2: TRU Waste

- TRU Retrieval
 - 3A burial ground
 - Complete installation of the shoring box walls and roof on Box 80 of the 3A burial ground and ship the box to CWC.
 - Complete repairs to Box 14 in Trench 17 and ship to CWC.
 - Continue container shipments from Trenches 8 and 17.
 - 4B/4C burial ground
 - Remove large concrete box (46 m³) from Trench 11 of the 4B burial ground and ship to CWC.
 - Remove five metal boxes (30 m³) and two concrete boxes (3.6 m³) from Trench 11 of the 4B burial ground.
 - Complete shipment preparations on eight concrete-shielded overpacks containing RH waste containers (6.2 m³) from Trench 11 of the 4B burial ground and ship them to CWC.
 - Ship two concrete boxes (7.5 m³) from Trench 11 of the 4B burial ground to CWC.
 - Overpack and ship a LLW 55-gallon drum from Trench 11 of the 4B burial ground to PFNW.
 - Start 4C Process Area Portable Assay Campaign 75.
 - Complete 4C Process Area Mobile Drum Venting System gas chromatograph final calibration, user validation/functional test for a procedure using calibration gas.
 - 12B burial ground
 - Continue removal of waste drums.
 - Continue drum assay, venting, x-raying, and packaging waste for shipment.
- TRU Repackaging and Shipments
 - Four planned shipments.
- Suspect TRU Waste Shipments
 - No planned shipments for next week.

RL-0030 Soil & Groundwater Remediation, Groundwater/Vadose Zone**RL-0030.R1: Central Plateau Soil & Groundwater**

- Continue construction of the 200 West Groundwater Treatment Facility.
- Continue well drilling and decommissioning.

RL-0040 Nuclear Facility D&D – Remainder of Hanford**RL-0040.R1.1: U Plant/Other D&D**

- Continue pouring grout into Cell 10 of U Canyon.
- Continue size-reduction of slab tanks inside the 209-E Criticality Mass Laboratory.
- Continue demolition and processing of the five boilers at the 284-E Power House.

RL-0040.R1.2: Outer Zone D&D/Waste Sites

- Deliver the second of the well cask railcars to ERDF for disposal.

- Continue remediation of the 200-MG-1 waste sites

RL-0041 Nuclear Facility D&D – River Corridor Closure Project

RL-0041.R1.1: 100K Area Remediation

- Continue demolition and loadout at the 183.4-KE and 183.4-KW Clearwells, the 183.3-KE Sedimentation Basin Sand Filters, and 183.1-KE Headhouse substructures.
- Continue excavating soil from and planning for remediation of 100K Area waste sites.