

Transmission of material in this release is embargoed until  
8:30 a.m. (EDT) Friday, August 3, 2012

USDL-12-1531

Technical information:

Household data: (202) 691-6378 • cpsinfo@bls.gov • www.bls.gov/cps

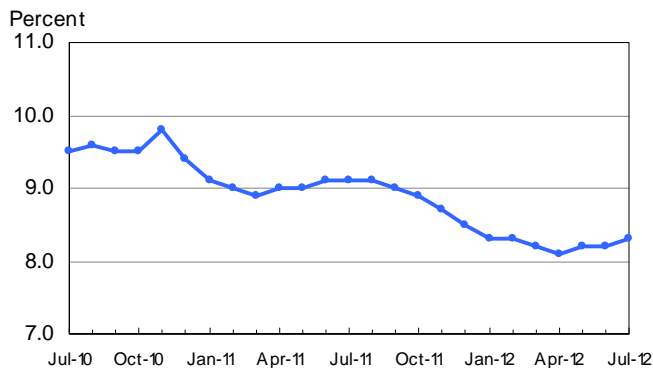
Establishment data: (202) 691-6555 • cesinfo@bls.gov • www.bls.gov/ces

Media contact: (202) 691-5902 • PressOffice@bls.gov

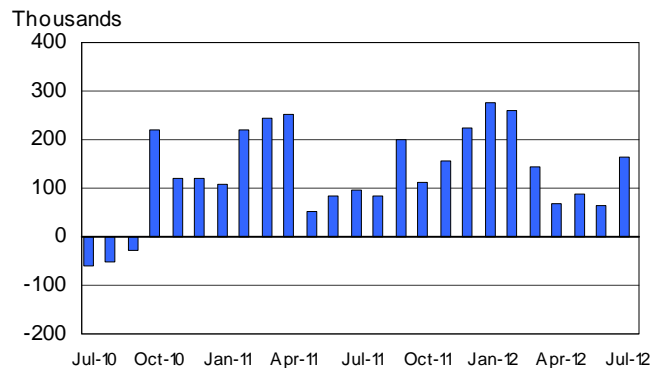
## THE EMPLOYMENT SITUATION — JULY 2012

Total **nonfarm payroll employment** rose by 163,000 in July, and the **unemployment rate** was essentially unchanged at 8.3 percent, the U.S. Bureau of Labor Statistics reported today. Employment rose in professional and business services, food services and drinking places, and manufacturing.

**Chart 1. Unemployment rate, seasonally adjusted, July 2010 – July 2012**



**Chart 2. Nonfarm payroll employment over-the-month change, seasonally adjusted, July 2010 – July 2012**



### Household Survey Data

Both the **number of unemployed persons** (12.8 million) and the **unemployment rate** (8.3 percent) were essentially unchanged in July. Both measures have shown little movement thus far in 2012. (See table A-1.)

Among the **major worker groups**, the unemployment rate for Hispanics (10.3 percent) edged down in July, while the rates for adult men (7.7 percent), adult women (7.5 percent), teenagers (23.8 percent), whites (7.4 percent), and blacks (14.1 percent) showed little or no change. The jobless rate for Asians was 6.2 percent in July (not seasonally adjusted), little changed from a year earlier. (See tables A-1, A-2, and A-3.)

In July, the number of **long-term unemployed** (those jobless for 27 weeks and over) was little changed at 5.2 million. These individuals accounted for 40.7 percent of the unemployed. (See table A-12.)

Both the **civilian labor force participation rate**, at 63.7 percent, and the **employment-population ratio**, at 58.4 percent, changed little in July. (See table A-1.)

The number of persons employed **part time for economic reasons** (sometimes referred to as involuntary part-time workers) was essentially unchanged at 8.2 million in July. These individuals were working part time because their hours had been cut back or because they were unable to find a full-time job. (See table A-8.)

In July, 2.5 million persons were **marginally attached to the labor force**, down from 2.8 million a year earlier. (These data are not seasonally adjusted.) These individuals were not in the labor force, wanted and were available for work, and had looked for a job sometime in the prior 12 months. They were not counted as unemployed because they had not searched for work in the 4 weeks preceding the survey. (See table A-16.)

Among the marginally attached, there were 852,000 **discouraged workers** in July, a decline of 267,000 from a year earlier. (These data are not seasonally adjusted.) Discouraged workers are persons not currently looking for work because they believe no jobs are available for them. The remaining 1.7 million persons marginally attached to the labor force in July had not searched for work in the 4 weeks preceding the survey for reasons such as school attendance or family responsibilities.

### **Establishment Survey Data**

Total **nonfarm payroll employment** rose by 163,000 in July. Since the beginning of this year, employment growth has averaged 151,000 per month, about the same as the average monthly gain of 153,000 in 2011. In July, employment rose in professional and business services, food services and drinking places, and manufacturing. (See table B-1.)

Employment in **professional and business services** increased by 49,000 in July. Computer systems design added 7,000 jobs, and employment in temporary help services continued to trend up (+14,000).

Within leisure and hospitality, employment in **food services and drinking places** rose by 29,000 over the month and by 292,000 over the past 12 months.

**Manufacturing** employment rose in July (+25,000), with nearly all of the increase in durable goods manufacturing. Within durable goods, the motor vehicles and parts industry had fewer seasonal layoffs than is typical for July, contributing to a seasonally adjusted employment increase of 13,000. Employment continued to trend up in fabricated metal products (+5,000).

Employment continued to trend up in **health care** in July (+12,000), with over-the-month gains in outpatient care centers (+4,000) and in hospitals (+5,000). Employment also continued to trend up in **wholesale trade**.

**Utilities** employment declined in July (-8,000). The decrease reflects 8,500 utility workers who were off payrolls due to a labor-management dispute.

Employment in other major industries, including **mining and logging, construction, retail trade, transportation and warehousing, financial activities, and government**, showed little or no change over the month.

The **average workweek for all employees** on private nonfarm payrolls was unchanged at 34.5 hours in July. Both the manufacturing workweek, at 40.7 hours, and factory overtime, at 3.2 hours, were unchanged over the month. The average workweek for **production and nonsupervisory employees** on private nonfarm payrolls was unchanged at 33.7 hours. (See tables B-2 and B-7.)

In July, **average hourly earnings for all employees** on private nonfarm payrolls edged up by 2 cents to \$23.52. Over the year, average hourly earnings rose by 1.7 percent. In July, average hourly earnings of private-sector **production and nonsupervisory employees** increased by 2 cents to \$19.77. (See tables B-3 and B-8.)

The change in total nonfarm payroll employment for May was revised from +77,000 to +87,000, and the change for June was revised from +80,000 to +64,000.

---

**The Employment Situation for August is scheduled to be released on Friday, September 7, 2012, at 8:30 a.m. (EDT).**

# HOUSEHOLD DATA

## Summary table A. Household data, seasonally adjusted

[Numbers in thousands]

Category	July 2011	May 2012	June 2012	July 2012	Change from: June 2012-July 2012
<b>Employment status</b>					
Civilian noninstitutional population.....	239,671	242,966	243,155	243,354	199
Civilian labor force.....	153,358	155,007	155,163	155,013	-150
Participation rate.....	64.0	63.8	63.8	63.7	-0.1
Employed.....	139,450	142,287	142,415	142,220	-195
Employment-population ratio.....	58.2	58.6	58.6	58.4	-0.2
Unemployed.....	13,908	12,720	12,749	12,794	45
Unemployment rate.....	9.1	8.2	8.2	8.3	0.1
Not in labor force.....	86,313	87,958	87,992	88,340	348
<b>Unemployment rates</b>					
Total, 16 years and over.....	9.1	8.2	8.2	8.3	0.1
Adult men (20 years and over).....	8.9	7.8	7.8	7.7	-0.1
Adult women (20 years and over).....	7.9	7.4	7.4	7.5	0.1
Teenagers (16 to 19 years).....	24.9	24.6	23.7	23.8	0.1
White.....	8.1	7.4	7.4	7.4	0.0
Black or African American.....	15.9	13.6	14.4	14.1	-0.3
Asian (not seasonally adjusted).....	7.7	5.2	6.3	6.2	-
Hispanic or Latino ethnicity.....	11.3	11.0	11.0	10.3	-0.7
Total, 25 years and over.....	7.8	6.9	6.9	6.9	0.0
Less than a high school diploma.....	14.9	13.0	12.6	12.7	0.1
High school graduates, no college.....	9.3	8.1	8.4	8.7	0.3
Some college or associate degree.....	8.2	7.9	7.5	7.1	-0.4
Bachelor's degree and higher.....	4.3	3.9	4.1	4.1	0.0
<b>Reason for unemployment</b>					
Job losers and persons who completed temporary jobs.....	8,146	6,989	7,207	7,123	-84
Job leavers.....	936	891	936	878	-58
Reentrants.....	3,424	3,439	3,227	3,380	153
New entrants.....	1,274	1,367	1,331	1,311	-20
<b>Duration of unemployment</b>					
Less than 5 weeks.....	2,675	2,580	2,810	2,711	-99
5 to 14 weeks.....	3,063	3,002	2,826	3,092	266
15 to 26 weeks.....	1,972	1,662	1,811	1,760	-51
27 weeks and over.....	6,162	5,411	5,370	5,185	-185
<b>Employed persons at work part time</b>					
Part time for economic reasons.....	8,437	8,098	8,210	8,246	36
Slack work or business conditions.....	5,695	5,147	5,446	5,342	-104
Could only find part-time work.....	2,538	2,649	2,514	2,576	62
Part time for noneconomic reasons.....	18,280	19,393	18,829	18,866	37
<b>Persons not in the labor force (not seasonally adjusted)</b>					
Marginally attached to the labor force.....	2,785	2,423	2,483	2,529	-
Discouraged workers.....	1,119	830	821	852	-

- Over-the-month changes are not displayed for not seasonally adjusted data.

NOTE: Persons whose ethnicity is identified as Hispanic or Latino may be of any race. Detail for the seasonally adjusted data shown in this table will not necessarily add to totals because of the independent seasonal adjustment of the various series. Updated population controls are introduced annually with the release of January data.

**ESTABLISHMENT DATA**  
**Summary table B. Establishment data, seasonally adjusted**

Category	July 2011	May 2012	June 2012 <sup>p</sup>	July 2012 <sup>p</sup>
<b>EMPLOYMENT BY SELECTED INDUSTRY</b> (Over-the-month change, in thousands)				
Total nonfarm.....	96	87	64	163
Total private.....	175	116	73	172
Goods-producing.....	52	-15	13	24
Mining and logging.....	9	4	-1	0
Construction.....	13	-32	4	-1
Manufacturing.....	30	13	10	25
Durable goods <sup>1</sup> .....	22	12	10	24
Motor vehicles and parts.....	9.2	6.1	7.1	12.8
Nondurable goods.....	8	1	0	1
Private service-providing <sup>1</sup> .....	123	131	60	148
Wholesale trade.....	2.3	13.6	10.8	9.2
Retail trade.....	26.9	5.5	-3.2	6.7
Transportation and warehousing.....	-3.5	32.2	-3.4	6.9
Information.....	-4	4	-1	11
Financial activities.....	-4	11	3	1
Professional and business services <sup>1</sup> .....	39	18	44	49
Temporary help services.....	8.9	14.6	21.1	14.1
Education and health services <sup>1</sup> .....	50	44	-6	38
Health care and social assistance.....	36.1	33.5	9.5	19.1
Leisure and hospitality.....	17	-4	10	27
Other services.....	0	6	4	8
Government.....	-79	-29	-9	-9
<b>WOMEN AND PRODUCTION AND NONSUPERVISORY EMPLOYEES</b> AS A PERCENT OF ALL EMPLOYEES <sup>2</sup>				
Total nonfarm women employees.....	49.4	49.3	49.3	49.3
Total private women employees.....	47.9	47.8	47.8	47.8
Total private production and nonsupervisory employees.....	82.4	82.6	82.6	82.6
<b>HOURS AND EARNINGS</b> ALL EMPLOYEES				
<b>Total private</b>				
Average weekly hours.....	34.4	34.4	34.5	34.5
Average hourly earnings.....	\$ 23.13	\$ 23.43	\$ 23.50	\$ 23.52
Average weekly earnings.....	\$795.67	\$805.99	\$810.75	\$811.44
Index of aggregate weekly hours (2007=100) <sup>3</sup> .....	94.3	95.7	96.1	96.2
Over-the-month percent change.....	0.2	-0.2	0.4	0.1
Index of aggregate weekly payrolls (2007=100) <sup>4</sup> .....	104.0	107.0	107.7	107.9
Over-the-month percent change.....	0.5	0.0	0.7	0.2
<b>HOURS AND EARNINGS</b> PRODUCTION AND NONSUPERVISORY EMPLOYEES				
<b>Total private</b>				
Average weekly hours.....	33.7	33.7	33.7	33.7
Average hourly earnings.....	\$ 19.52	\$ 19.70	\$ 19.75	\$ 19.77
Average weekly earnings.....	\$657.82	\$663.89	\$665.58	\$666.25
Index of aggregate weekly hours (2002=100) <sup>3</sup> .....	101.5	103.3	103.4	103.5
Over-the-month percent change.....	0.1	0.1	0.1	0.1
Index of aggregate weekly payrolls (2002=100) <sup>4</sup> .....	132.4	136.0	136.4	136.7
Over-the-month percent change.....	0.5	0.1	0.3	0.2
<b>DIFFUSION INDEX</b> (Over 1-month span) <sup>5</sup>				
Total private (266 industries).....	62.2	61.3	56.8	56.4
Manufacturing (81 industries).....	63.6	56.8	51.9	54.9

1 Includes other industries, not shown separately.

2 Data relate to production employees in mining and logging and manufacturing, construction employees in construction, and nonsupervisory employees in the service-providing industries.

3 The indexes of aggregate weekly hours are calculated by dividing the current month's estimates of aggregate hours by the corresponding annual average aggregate hours.

4 The indexes of aggregate weekly payrolls are calculated by dividing the current month's estimates of aggregate weekly payrolls by the corresponding annual average aggregate weekly payrolls.

5 Figures are the percent of industries with employment increasing plus one-half of the industries with unchanged employment, where 50 percent indicates an equal balance between industries with increasing and decreasing employment.

p Preliminary

NOTE: Data in this table have been corrected. For more information see [http://www.bls.gov/bls/ceswomen\\_usps\\_correction.htm](http://www.bls.gov/bls/ceswomen_usps_correction.htm).

## **Frequently Asked Questions about Employment and Unemployment Estimates**

### **Why are there two monthly measures of employment?**

The household survey and establishment survey both produce sample-based estimates of employment and both have strengths and limitations. The establishment survey employment series has a smaller margin of error on the measurement of month-to-month change than the household survey because of its much larger sample size. An over-the-month employment change of about 100,000 is statistically significant in the establishment survey, while the threshold for a statistically significant change in the household survey is about 400,000. However, the household survey has a more expansive scope than the establishment survey because it includes the self-employed, unpaid family workers, agricultural workers, and private household workers, who are excluded by the establishment survey. The household survey also provides estimates of employment for demographic groups.

### **Are undocumented immigrants counted in the surveys?**

It is likely that both surveys include at least some undocumented immigrants. However, neither the establishment nor the household survey is designed to identify the legal status of workers. Therefore, it is not possible to determine how many are counted in either survey. The establishment survey does not collect data on the legal status of workers. The household survey does include questions which identify the foreign and native born, but it does not include questions about the legal status of the foreign born.

### **Why does the establishment survey have revisions?**

The establishment survey revises published estimates to improve its data series by incorporating additional information that was not available at the time of the initial publication of the estimates. The establishment survey revises its initial monthly estimates twice, in the immediately succeeding 2 months, to incorporate additional sample receipts from respondents in the survey and recalculated seasonal adjustment factors. For more information on the monthly revisions, please visit [www.bls.gov/ces/cesrevinfo.htm](http://www.bls.gov/ces/cesrevinfo.htm).

On an annual basis, the establishment survey incorporates a benchmark revision that re-anchors estimates to nearly complete employment counts available from unemployment insurance tax records. The benchmark helps to control for sampling and modeling errors in the estimates. For more information on the annual benchmark revision, please visit [www.bls.gov/web/cesbmart.htm](http://www.bls.gov/web/cesbmart.htm).

### **Does the establishment survey sample include small firms?**

Yes; about 40 percent of the establishment survey sample is comprised of business establishments with fewer than 20 employees. The establishment survey sample is designed to maximize the reliability of the total nonfarm employment estimate; firms from all size classes and industries are appropriately sampled to achieve that goal.

### **Does the establishment survey account for employment from new businesses?**

Yes; monthly establishment survey estimates include an adjustment to account for the net employment change generated by business births and deaths. The adjustment comes from an econometric model that forecasts the monthly net jobs impact of business births and deaths based on the actual past values of the net impact that can be observed with a lag from the Quarterly Census of Employment and Wages. The

establishment survey uses modeling rather than sampling for this purpose because the survey is not immediately able to bring new businesses into the sample. There is an unavoidable lag between the birth of a new firm and its appearance on the sampling frame and availability for selection. BLS adds new businesses to the survey twice a year.

**Is the count of unemployed persons limited to just those people receiving unemployment insurance benefits?**

No; the estimate of unemployment is based on a monthly sample survey of households. All persons who are without jobs and are actively seeking and available to work are included among the unemployed. (People on temporary layoff are included even if they do not actively seek work.) There is no requirement or question relating to unemployment insurance benefits in the monthly survey.

**Does the official unemployment rate exclude people who have stopped looking for work?**

Yes; however, there are separate estimates of persons outside the labor force who want a job, including those who have stopped looking because they believe no jobs are available (discouraged workers). In addition, alternative measures of labor underutilization (some of which include discouraged workers and other groups not officially counted as unemployed) are published each month in The Employment Situation news release.

**How can unusually severe weather affect employment and hours estimates?**

In the establishment survey, the reference period is the pay period that includes the 12<sup>th</sup> of the month. Unusually severe weather is more likely to have an impact on average weekly hours than on employment. Average weekly hours are estimated for paid time during the pay period, including pay for holidays, sick leave, or other time off. The impact of severe weather on hours estimates typically, but not always, results in a reduction in average weekly hours. For example, some employees may be off work for part of the pay period and not receive pay for the time missed, while some workers, such as those dealing with cleanup or repair, may work extra hours.

In order for severe weather conditions to reduce the estimate of payroll employment, employees have to be off work without pay for the entire pay period. About half of all employees in the payroll survey have a 2-week, semi-monthly, or monthly pay period. Employees who receive pay for any part of the pay period, even 1 hour, are counted in the payroll employment figures. It is not possible to quantify the effect of extreme weather on estimates of employment from the establishment survey.

In the household survey, the reference period is generally the calendar week that includes the 12<sup>th</sup> of the month. Persons who miss the entire week's work for weather-related events are counted as employed whether or not they are paid for the time off. The household survey collects data on the number of persons who usually work full time but had reduced hours, or had a job but were not at work the entire week, due to bad weather. Current and historical data are available on the household survey's most requested statistics page at <http://data.bls.gov/cgi-bin/surveymost?ln>.

# Technical Note

This news release presents statistics from two major surveys, the Current Population Survey (CPS; household survey) and the Current Employment Statistics survey (CES; establishment survey). The household survey provides information on the labor force, employment, and unemployment that appears in the "A" tables, marked HOUSEHOLD DATA. It is a sample survey of about 60,000 eligible households conducted by the U.S. Census Bureau for the U.S. Bureau of Labor Statistics (BLS).

The establishment survey provides information on employment, hours, and earnings of employees on nonfarm payrolls; the data appear in the "B" tables, marked ESTABLISHMENT DATA. BLS collects these data each month from the payroll records of a sample of nonagricultural business establishments. Each month the CES program surveys about 141,000 businesses and government agencies, representing approximately 486,000 individual worksites, in order to provide detailed industry data on employment, hours, and earnings of workers on nonfarm payrolls. The active sample includes approximately one-third of all nonfarm payroll employees.

For both surveys, the data for a given month relate to a particular week or pay period. In the household survey, the reference period is generally the calendar week that contains the 12th day of the month. In the establishment survey, the reference period is the pay period including the 12th, which may or may not correspond directly to the calendar week.

## Coverage, definitions, and differences between surveys

**Household survey.** The sample is selected to reflect the entire civilian noninstitutional population. Based on responses to a series of questions on work and job search activities, each person 16 years and over in a sample household is classified as employed, unemployed, or not in the labor force.

People are classified as *employed* if they did any work at all as paid employees during the reference week; worked in their own business, profession, or on their own farm; or worked without pay at least 15 hours in a family business or farm. People are also counted as employed if they were temporarily absent from their jobs because of illness, bad weather, vacation, labor-management disputes, or personal reasons.

People are classified as *unemployed* if they meet all of the following criteria: they had no employment during the reference week; they were available for work at that time; and they made specific efforts to find employment sometime during the 4-week period ending with the reference week. Persons laid off from a job and expecting recall need not be looking for work to be counted as unemployed. The unemployment data derived from the household survey in no way depend upon the eligibility for or receipt of unemployment insurance benefits.

The *civilian labor force* is the sum of employed and

unemployed persons. Those not classified as employed or unemployed are *not in the labor force*. The *unemployment rate* is the number unemployed as a percent of the labor force. The *labor force participation rate* is the labor force as a percent of the population, and the *employment-population ratio* is the employed as a percent of the population. Additional information about the household survey can be found at [www.bls.gov/cps/documentation.htm](http://www.bls.gov/cps/documentation.htm).

**Establishment survey.** The sample establishments are drawn from private nonfarm businesses such as factories, offices, and stores, as well as from federal, state, and local government entities. *Employees on nonfarm payrolls* are those who received pay for any part of the reference pay period, including persons on paid leave. Persons are counted in each job they hold. *Hours and earnings* data are produced for the private sector for all employees and for production and nonsupervisory employees. *Production and nonsupervisory employees* are defined as production and related employees in manufacturing and mining and logging, construction workers in construction, and non-supervisory employees in private service-providing industries.

Industries are classified on the basis of an establishment's principal activity in accordance with the 2012 version of the North American Industry Classification System. Additional information about the establishment survey can be found at [www.bls.gov/ces/#technical](http://www.bls.gov/ces/#technical).

**Differences in employment estimates.** The numerous conceptual and methodological differences between the household and establishment surveys result in important distinctions in the employment estimates derived from the surveys. Among these are:

- The household survey includes agricultural workers, the self-employed, unpaid family workers, and private household workers among the employed. These groups are excluded from the establishment survey.
- The household survey includes people on unpaid leave among the employed. The establishment survey does not.
- The household survey is limited to workers 16 years of age and older. The establishment survey is not limited by age.
- The household survey has no duplication of individuals, because individuals are counted only once, even if they hold more than one job. In the establishment survey, employees working at more than one job and thus appearing on more than one payroll are counted separately for each appearance.



## Seasonal adjustment

Over the course of a year, the size of the nation's labor force and the levels of employment and unemployment undergo regularly occurring fluctuations. These events may result from seasonal changes in weather, major holidays, and the opening and closing of schools. The effect of such seasonal variation can be very large.

Because these seasonal events follow a more or less regular pattern each year, their influence on the level of a series can be tempered by adjusting for regular seasonal variation. These adjustments make nonseasonal developments, such as declines in employment or increases in the participation of women in the labor force, easier to spot. For example, in the household survey, the large number of youth entering the labor force each June is likely to obscure any other changes that have taken place relative to May, making it difficult to determine if the level of economic activity has risen or declined. Similarly, in the establishment survey, payroll employment in education declines by about 20 percent at the end of the spring term and later rises with the start of the fall term, obscuring the underlying employment trends in the industry. Because seasonal employment changes at the end and beginning of the school year can be estimated, the statistics can be adjusted to make underlying employment patterns more discernable. The seasonally adjusted figures provide a more useful tool with which to analyze changes in month-to-month economic activity.

Many seasonally adjusted series are independently adjusted in both the household and establishment surveys. However, the adjusted series for many major estimates, such as total payroll employment, employment in most major sectors, total employment, and unemployment are computed by aggregating independently adjusted component series. For example, total unemployment is derived by summing the adjusted series for four major age-sex components; this differs from the unemployment estimate that would be obtained by directly adjusting the total or by combining the duration, reasons, or more detailed age categories.

For both the household and establishment surveys, a concurrent seasonal adjustment methodology is used in which new seasonal factors are calculated each month using all relevant data, up to and including the data for the current month. In the household survey, new seasonal factors are used to adjust only the current month's data. In the establishment survey, however, new seasonal factors are used each month to adjust the three most recent monthly estimates. The prior 2 months are routinely revised to incorporate additional sample reports and recalculated seasonal adjustment factors. In both surveys, 5-year revisions to historical data are made once a year.

## Reliability of the estimates

Statistics based on the household and establishment surveys are subject to both sampling and nonsampling error. When a sample rather than the entire population is

surveyed, there is a chance that the sample estimates may differ from the "true" population values they represent. The exact difference, or *sampling error*, varies depending on the particular sample selected, and this variability is measured by the standard error of the estimate. There is about a 90-percent chance, or level of confidence, that an estimate based on a sample will differ by no more than 1.6 standard errors from the "true" population value because of sampling error. BLS analyses are generally conducted at the 90-percent level of confidence.

For example, the confidence interval for the monthly change in total nonfarm employment from the establishment survey is on the order of plus or minus 100,000. Suppose the estimate of nonfarm employment increases by 50,000 from one month to the next. The 90-percent confidence interval on the monthly change would range from -50,000 to +150,000 (50,000 +/- 100,000). These figures do not mean that the sample results are off by these magnitudes, but rather that there is about a 90-percent chance that the "true" over-the-month change lies within this interval. Since this range includes values of less than zero, we could not say with confidence that nonfarm employment had, in fact, increased that month. If, however, the reported nonfarm employment rise was 250,000, then all of the values within the 90-percent confidence interval would be greater than zero. In this case, it is likely (at least a 90-percent chance) that nonfarm employment had, in fact, risen that month. At an unemployment rate of around 5.5 percent, the 90-percent confidence interval for the monthly change in unemployment as measured by the household survey is about +/- 280,000, and for the monthly change in the unemployment rate it is about +/- 0.19 percentage point.

In general, estimates involving many individuals or establishments have lower standard errors (relative to the size of the estimate) than estimates which are based on a small number of observations. The precision of estimates also is improved when the data are cumulated over time, such as for quarterly and annual averages.

The household and establishment surveys are also affected by *nonsampling error*, which can occur for many reasons, including the failure to sample a segment of the population, inability to obtain information for all respondents in the sample, inability or unwillingness of respondents to provide correct information on a timely basis, mistakes made by respondents, and errors made in the collection or processing of the data.

For example, in the establishment survey, estimates for the most recent 2 months are based on incomplete returns; for this reason, these estimates are labeled preliminary in the tables. It is only after two successive revisions to a monthly estimate, when nearly all sample reports have been received, that the estimate is considered final.

Another major source of nonsampling error in the establishment survey is the inability to capture, on a timely basis, employment generated by new firms. To correct for this systematic underestimation of employment growth, an estimation procedure with two components is used to account for business births. The first component excludes

employment losses from business deaths from sample-based estimation in order to offset the missing employment gains from business births. This is incorporated into the sample-based estimation procedure by simply not reflecting sample units going out of business, but imputing to them the same employment trend as the other firms in the sample. This procedure accounts for most of the net birth/death employment.

The second component is an ARIMA time series model designed to estimate the residual net birth/death employment not accounted for by the imputation. The historical time series used to create and test the ARIMA model was derived from the unemployment insurance universe micro-level database, and reflects the actual residual net of births and deaths over the past 5 years.

The sample-based estimates from the establishment survey are adjusted once a year (on a lagged basis) to

universe counts of payroll employment obtained from administrative records of the unemployment insurance program. The difference between the March sample-based employment estimates and the March universe counts is known as a benchmark revision, and serves as a rough proxy for total survey error. The new benchmarks also incorporate changes in the classification of industries. Over the past decade, absolute benchmark revisions for total nonfarm employment have averaged 0.3 percent, with a range from -0.7 to 0.6 percent.

#### **Other information**

Information in this release will be made available to sensory impaired individuals upon request. Voice phone: (202) 691-5200; Federal Relay Service: (800) 877-8339.

# HOUSEHOLD DATA

## Table A-1. Employment status of the civilian population by sex and age

[Numbers in thousands]

Employment status, sex, and age	Not seasonally adjusted			Seasonally adjusted <sup>1</sup>					
	July 2011	June 2012	July 2012	July 2011	Mar. 2012	Apr. 2012	May 2012	June 2012	July 2012
<b>TOTAL</b>									
Civilian noninstitutional population.....	239,671	243,155	243,354	239,671	242,604	242,784	242,966	243,155	243,354
Civilian labor force.....	154,812	156,385	156,526	153,358	154,707	154,365	155,007	155,163	155,013
Participation rate.....	64.6	64.3	64.3	64.0	63.8	63.6	63.8	63.8	63.7
Employed.....	140,384	143,202	143,126	139,450	142,034	141,865	142,287	142,415	142,220
Employment-population ratio.....	58.6	58.9	58.8	58.2	58.5	58.4	58.6	58.6	58.4
Unemployed.....	14,428	13,184	13,400	13,908	12,673	12,500	12,720	12,749	12,794
Unemployment rate.....	9.3	8.4	8.6	9.1	8.2	8.1	8.2	8.2	8.3
Not in labor force.....	84,859	86,770	86,828	86,313	87,897	88,419	87,958	87,992	88,340
Persons who currently want a job.....	6,810	7,157	6,837	6,556	6,299	6,366	6,291	6,520	6,554
<b>Men, 16 years and over</b>									
Civilian noninstitutional population.....	116,347	117,277	117,381	116,347	116,986	117,081	117,177	117,277	117,381
Civilian labor force.....	82,871	83,369	83,554	81,836	82,179	81,983	82,350	82,450	82,395
Participation rate.....	71.2	71.1	71.2	70.3	70.2	70.0	70.3	70.3	70.2
Employed.....	75,208	76,338	76,691	74,011	75,369	75,256	75,401	75,486	75,466
Employment-population ratio.....	64.6	65.1	65.3	63.6	64.4	64.3	64.3	64.4	64.3
Unemployed.....	7,664	7,030	6,863	7,825	6,810	6,727	6,949	6,964	6,929
Unemployment rate.....	9.2	8.4	8.2	9.6	8.3	8.2	8.4	8.4	8.4
Not in labor force.....	33,476	33,909	33,828	34,511	34,807	35,098	34,827	34,827	34,987
<b>Men, 20 years and over</b>									
Civilian noninstitutional population.....	107,773	108,613	108,727	107,773	108,289	108,396	108,503	108,613	108,727
Civilian labor force.....	79,322	79,733	79,758	78,977	79,337	79,050	79,382	79,425	79,353
Participation rate.....	73.6	73.4	73.4	73.3	73.3	72.9	73.2	73.1	73.0
Employed.....	72,588	73,735	73,863	71,930	73,286	73,119	73,229	73,259	73,227
Employment-population ratio.....	67.4	67.9	67.9	66.7	67.7	67.5	67.5	67.4	67.3
Unemployed.....	6,734	5,998	5,894	7,047	6,051	5,930	6,153	6,166	6,125
Unemployment rate.....	8.5	7.5	7.4	8.9	7.6	7.5	7.8	7.8	7.7
Not in labor force.....	28,451	28,879	28,969	28,795	28,952	29,346	29,121	29,188	29,374
<b>Women, 16 years and over</b>									
Civilian noninstitutional population.....	123,324	125,878	125,972	123,324	125,619	125,703	125,788	125,878	125,972
Civilian labor force.....	71,941	73,017	72,972	71,522	72,529	72,382	72,657	72,713	72,619
Participation rate.....	58.3	58.0	57.9	58.0	57.7	57.6	57.8	57.8	57.6
Employed.....	65,176	66,863	66,435	65,439	66,665	66,609	66,886	66,929	66,754
Employment-population ratio.....	52.8	53.1	52.7	53.1	53.1	53.0	53.2	53.2	53.0
Unemployed.....	6,764	6,153	6,537	6,084	5,863	5,773	5,771	5,785	5,865
Unemployment rate.....	9.4	8.4	9.0	8.5	8.1	8.0	7.9	8.0	8.1
Not in labor force.....	51,383	52,862	53,000	51,801	53,090	53,321	53,131	53,165	53,354
<b>Women, 20 years and over</b>									
Civilian noninstitutional population.....	115,138	117,546	117,648	115,138	117,260	117,353	117,448	117,546	117,648
Civilian labor force.....	68,512	69,610	69,402	68,706	69,589	69,562	69,807	69,803	69,691
Participation rate.....	59.5	59.2	59.0	59.7	59.3	59.3	59.4	59.4	59.2
Employed.....	62,603	64,288	63,703	63,257	64,413	64,425	64,671	64,628	64,446
Employment-population ratio.....	54.4	54.7	54.1	54.9	54.9	54.9	55.1	55.0	54.8
Unemployed.....	5,909	5,322	5,700	5,449	5,176	5,137	5,136	5,175	5,244
Unemployment rate.....	8.6	7.6	8.2	7.9	7.4	7.4	7.4	7.4	7.5
Not in labor force.....	46,626	47,936	48,246	46,432	47,671	47,791	47,641	47,743	47,957
<b>Both sexes, 16 to 19 years</b>									
Civilian noninstitutional population.....	16,760	16,997	16,979	16,760	17,056	17,034	17,015	16,997	16,979
Civilian labor force.....	6,978	7,042	7,366	5,675	5,781	5,753	5,819	5,936	5,970
Participation rate.....	41.6	41.4	43.4	33.9	33.9	33.8	34.2	34.9	35.2
Employed.....	5,193	5,178	5,560	4,262	4,335	4,321	4,388	4,528	4,546
Employment-population ratio.....	31.0	30.5	32.7	25.4	25.4	25.4	25.8	26.6	26.8
Unemployed.....	1,785	1,864	1,806	1,412	1,447	1,432	1,431	1,408	1,424
Unemployment rate.....	25.6	26.5	24.5	24.9	25.0	24.9	24.6	23.7	23.8
Not in labor force.....	9,782	9,955	9,613	11,085	11,274	11,282	11,197	11,061	11,009

<sup>1</sup> The population figures are not adjusted for seasonal variation; therefore, identical numbers appear in the unadjusted and seasonally adjusted columns.

NOTE: Updated population controls are introduced annually with the release of January data.

# HOUSEHOLD DATA

## Table A-2. Employment status of the civilian population by race, sex, and age

[Numbers in thousands]

Employment status, race, sex, and age	Not seasonally adjusted			Seasonally adjusted <sup>1</sup>					
	July 2011	June 2012	July 2012	July 2011	Mar. 2012	Apr. 2012	May 2012	June 2012	July 2012
<b>WHITE</b>									
Civilian noninstitutional population.....	193,106	193,120	193,245	193,106	192,788	192,893	193,004	193,120	193,245
Civilian labor force.....	125,659	124,624	124,749	124,557	123,713	123,499	123,989	123,783	123,589
Participation rate.....	65.1	64.5	64.6	64.5	64.2	64.0	64.2	64.1	64.0
Employed.....	115,350	115,280	115,255	114,497	114,697	114,355	114,767	114,674	114,409
Employment-population ratio.....	59.7	59.7	59.6	59.3	59.5	59.3	59.5	59.4	59.2
Unemployed.....	10,309	9,344	9,493	10,061	9,016	9,144	9,222	9,109	9,180
Unemployment rate.....	8.2	7.5	7.6	8.1	7.3	7.4	7.4	7.4	7.4
Not in labor force.....	67,448	68,496	68,496	68,549	69,076	69,394	69,015	69,337	69,656
<b>Men, 20 years and over</b>									
Civilian labor force.....	65,396	64,730	64,795	65,134	64,552	64,410	64,591	64,527	64,467
Participation rate.....	74.1	73.8	73.8	73.8	73.8	73.5	73.7	73.6	73.4
Employed.....	60,555	60,374	60,588	59,991	60,192	60,046	60,072	60,001	60,027
Employment-population ratio.....	68.6	68.8	69.0	68.0	68.8	68.6	68.5	68.4	68.4
Unemployed.....	4,841	4,356	4,208	5,142	4,360	4,364	4,519	4,526	4,440
Unemployment rate.....	7.4	6.7	6.5	7.9	6.8	6.8	7.0	7.0	6.9
<b>Women, 20 years and over</b>									
Civilian labor force.....	54,464	54,265	54,141	54,690	54,473	54,435	54,717	54,506	54,385
Participation rate.....	59.1	58.5	58.4	59.4	58.9	58.8	59.0	58.8	58.6
Employed.....	50,345	50,598	50,115	50,864	50,873	50,719	51,045	50,918	50,662
Employment-population ratio.....	54.7	54.6	54.0	55.2	55.0	54.8	55.1	54.9	54.6
Unemployed.....	4,119	3,667	4,026	3,826	3,600	3,716	3,672	3,588	3,723
Unemployment rate.....	7.6	6.8	7.4	7.0	6.6	6.8	6.7	6.6	6.8
<b>Both sexes, 16 to 19 years</b>									
Civilian labor force.....	5,798	5,629	5,812	4,733	4,688	4,654	4,681	4,750	4,737
Participation rate.....	45.3	44.4	45.9	37.0	36.9	36.7	36.9	37.5	37.4
Employed.....	4,450	4,308	4,553	3,641	3,632	3,591	3,649	3,755	3,720
Employment-population ratio.....	34.7	34.0	36.0	28.4	28.6	28.3	28.8	29.7	29.4
Unemployed.....	1,348	1,321	1,259	1,092	1,056	1,063	1,031	995	1,017
Unemployment rate.....	23.3	23.5	21.7	23.1	22.5	22.8	22.0	20.9	21.5
<b>BLACK OR AFRICAN AMERICAN</b>									
Civilian noninstitutional population.....	29,123	29,885	29,918	29,123	29,792	29,824	29,854	29,885	29,918
Civilian labor force.....	17,895	18,758	18,643	17,614	18,427	18,274	18,290	18,541	18,383
Participation rate.....	61.4	62.8	62.3	60.5	61.9	61.3	61.3	62.0	61.4
Employed.....	14,890	15,978	15,845	14,812	15,843	15,891	15,807	15,872	15,798
Employment-population ratio.....	51.1	53.5	53.0	50.9	53.2	53.3	52.9	53.1	52.8
Unemployed.....	3,004	2,780	2,799	2,803	2,584	2,383	2,484	2,668	2,585
Unemployment rate.....	16.8	14.8	15.0	15.9	14.0	13.0	13.6	14.4	14.1
Not in labor force.....	11,229	11,128	11,274	11,509	11,365	11,550	11,564	11,345	11,534
<b>Men, 20 years and over</b>									
Civilian labor force.....	8,105	8,376	8,307	8,069	8,283	8,162	8,281	8,324	8,270
Participation rate.....	68.2	68.8	68.1	67.9	68.4	67.3	68.1	68.4	67.8
Employed.....	6,748	7,204	7,071	6,699	7,137	7,054	7,102	7,146	7,042
Employment-population ratio.....	56.8	59.2	58.0	56.3	58.9	58.1	58.4	58.7	57.7
Unemployed.....	1,357	1,172	1,236	1,371	1,147	1,108	1,179	1,178	1,227
Unemployment rate.....	16.7	14.0	14.9	17.0	13.8	13.6	14.2	14.2	14.8
<b>Women, 20 years and over</b>									
Civilian labor force.....	9,050	9,471	9,361	8,950	9,473	9,443	9,346	9,482	9,344
Participation rate.....	61.8	62.9	62.1	61.1	63.1	62.8	62.1	63.0	62.0
Employed.....	7,709	8,266	8,170	7,750	8,307	8,423	8,284	8,281	8,268
Employment-population ratio.....	52.6	54.9	54.2	52.9	55.4	56.1	55.1	55.0	54.8
Unemployed.....	1,341	1,205	1,190	1,199	1,166	1,019	1,062	1,202	1,076
Unemployment rate.....	14.8	12.7	12.7	13.4	12.3	10.8	11.4	12.7	11.5
<b>Both sexes, 16 to 19 years</b>									
Civilian labor force.....	740	910	976	596	671	669	664	735	770
Participation rate.....	28.5	34.4	37.0	23.0	25.1	25.1	25.0	27.8	29.2
Employed.....	433	508	604	363	399	413	421	446	488
Employment-population ratio.....	16.7	19.2	22.9	14.0	14.9	15.5	15.9	16.8	18.5
Unemployed.....	306	402	372	233	272	256	242	289	282
Unemployment rate.....	41.4	44.2	38.1	39.1	40.5	38.2	36.5	39.3	36.6
<b>ASIAN</b>									
Civilian noninstitutional population.....	11,410	12,695	12,812	-	-	-	-	-	-

See footnotes at end of table.

**HOUSEHOLD DATA**

**Table A-2. Employment status of the civilian population by race, sex, and age — Continued**

[Numbers in thousands]

Employment status, race, sex, and age	Not seasonally adjusted			Seasonally adjusted <sup>1</sup>					
	July 2011	June 2012	July 2012	July 2011	Mar. 2012	Apr. 2012	May 2012	June 2012	July 2012
Civilian labor force.....	7,405	8,202	8,346	-	-	-	-	-	-
Participation rate.....	64.9	64.6	65.1	-	-	-	-	-	-
Employed.....	6,838	7,682	7,830	-	-	-	-	-	-
Employment-population ratio.....	59.9	60.5	61.1	-	-	-	-	-	-
Unemployed.....	568	519	516	-	-	-	-	-	-
Unemployment rate.....	7.7	6.3	6.2	-	-	-	-	-	-
Not in labor force.....	4,004	4,493	4,466	-	-	-	-	-	-

<sup>1</sup> The population figures are not adjusted for seasonal variation; therefore, identical numbers appear in the unadjusted and seasonally adjusted columns.

- Data not available.

NOTE: Estimates for the above race groups will not sum to totals shown in table A-1 because data are not presented for all races. Updated population controls are introduced annually with the release of January data.

**HOUSEHOLD DATA**

**Table A-3. Employment status of the Hispanic or Latino population by sex and age**

[Numbers in thousands]

Employment status, sex, and age	Not seasonally adjusted			Seasonally adjusted <sup>1</sup>					
	July 2011	June 2012	July 2012	July 2011	Mar. 2012	Apr. 2012	May 2012	June 2012	July 2012
<b>HISPANIC OR LATINO ETHNICITY</b>									
Civilian noninstitutional population.....	34,470	36,708	36,792	34,470	36,463	36,546	36,626	36,708	36,792
Civilian labor force.....	22,920	24,679	24,627	22,778	24,128	24,253	24,567	24,588	24,497
Participation rate.....	66.5	67.2	66.9	66.1	66.2	66.4	67.1	67.0	66.6
Employed.....	20,325	21,962	22,092	20,207	21,638	21,755	21,867	21,885	21,966
Employment-population ratio.....	59.0	59.8	60.0	58.6	59.3	59.5	59.7	59.6	59.7
Unemployed.....	2,596	2,718	2,536	2,570	2,491	2,498	2,700	2,703	2,531
Unemployment rate.....	11.3	11.0	10.3	11.3	10.3	10.3	11.0	11.0	10.3
Not in labor force.....	11,549	12,029	12,164	11,692	12,335	12,293	12,059	12,120	12,294
<b>Men, 20 years and over</b>									
Civilian labor force.....	13,088	13,425	13,426	-	-	-	-	-	-
Participation rate.....	82.0	81.2	81.0	-	-	-	-	-	-
Employed.....	11,882	12,147	12,325	-	-	-	-	-	-
Employment-population ratio.....	74.5	73.5	74.4	-	-	-	-	-	-
Unemployed.....	1,206	1,277	1,102	-	-	-	-	-	-
Unemployment rate.....	9.2	9.5	8.2	-	-	-	-	-	-
<b>Women, 20 years and over</b>									
Civilian labor force.....	8,722	9,909	9,814	-	-	-	-	-	-
Participation rate.....	57.8	60.0	59.3	-	-	-	-	-	-
Employed.....	7,735	8,886	8,788	-	-	-	-	-	-
Employment-population ratio.....	51.2	53.8	53.1	-	-	-	-	-	-
Unemployed.....	987	1,022	1,027	-	-	-	-	-	-
Unemployment rate.....	11.3	10.3	10.5	-	-	-	-	-	-
<b>Both sexes, 16 to 19 years</b>									
Civilian labor force.....	1,110	1,346	1,386	-	-	-	-	-	-
Participation rate.....	32.6	36.8	37.9	-	-	-	-	-	-
Employed.....	708	928	979	-	-	-	-	-	-
Employment-population ratio.....	20.8	25.4	26.8	-	-	-	-	-	-
Unemployed.....	402	418	407	-	-	-	-	-	-
Unemployment rate.....	36.2	31.0	29.4	-	-	-	-	-	-

<sup>1</sup> The population figures are not adjusted for seasonal variation; therefore, identical numbers appear in the unadjusted and seasonally adjusted columns.

- Data not available.

NOTE: Persons whose ethnicity is identified as Hispanic or Latino may be of any race. Updated population controls are introduced annually with the release of January data.

**HOUSEHOLD DATA**

**Table A-4. Employment status of the civilian population 25 years and over by educational attainment**

[Numbers in thousands]

Educational attainment	Not seasonally adjusted			Seasonally adjusted					
	July 2011	June 2012	July 2012	July 2011	Mar. 2012	Apr. 2012	May 2012	June 2012	July 2012
<b>Less than a high school diploma</b>									
Civilian labor force.....	11,629	11,623	11,457	11,721	11,493	11,366	11,451	11,384	11,472
Participation rate.....	46.6	45.9	46.2	47.0	46.3	45.2	44.9	45.0	46.3
Employed.....	9,988	10,291	10,062	9,977	10,044	9,947	9,960	9,952	10,012
Employment-population ratio.....	40.0	40.6	40.6	40.0	40.4	39.6	39.1	39.3	40.4
Unemployed.....	1,641	1,332	1,395	1,744	1,449	1,419	1,491	1,431	1,460
Unemployment rate.....	14.1	11.5	12.2	14.9	12.6	12.5	13.0	12.6	12.7
<b>High school graduates, no college<sup>1</sup></b>									
Civilian labor force.....	37,113	36,851	36,782	37,471	36,475	36,718	36,924	36,984	37,047
Participation rate.....	59.9	59.8	59.2	60.5	59.0	59.2	59.5	60.0	59.7
Employed.....	33,750	33,884	33,676	33,973	33,573	33,834	33,928	33,869	33,838
Employment-population ratio.....	54.5	55.0	54.2	54.9	54.3	54.5	54.7	55.0	54.5
Unemployed.....	3,364	2,967	3,105	3,498	2,902	2,884	2,996	3,116	3,209
Unemployment rate.....	9.1	8.1	8.4	9.3	8.0	7.9	8.1	8.4	8.7
<b>Some college or associate degree</b>									
Civilian labor force.....	36,706	37,194	37,299	36,782	37,405	37,168	37,079	37,451	37,398
Participation rate.....	68.9	68.4	68.1	69.1	69.3	69.0	68.8	68.9	68.3
Employed.....	33,579	34,446	34,546	33,748	34,613	34,344	34,155	34,639	34,729
Employment-population ratio.....	63.0	63.4	63.1	63.4	64.2	63.7	63.4	63.7	63.4
Unemployed.....	3,128	2,748	2,752	3,034	2,793	2,824	2,924	2,812	2,669
Unemployment rate.....	8.5	7.4	7.4	8.2	7.5	7.6	7.9	7.5	7.1
<b>Bachelor's degree and higher<sup>2</sup></b>									
Civilian labor force.....	46,621	47,631	47,517	46,665	48,191	47,977	48,232	47,923	47,697
Participation rate.....	76.0	75.5	75.5	76.1	76.2	76.2	76.8	76.0	75.8
Employed.....	44,435	45,674	45,381	44,665	46,189	46,062	46,355	45,949	45,732
Employment-population ratio.....	72.5	72.4	72.1	72.8	73.1	73.2	73.8	72.9	72.7
Unemployed.....	2,186	1,957	2,136	2,000	2,002	1,915	1,877	1,973	1,965
Unemployment rate.....	4.7	4.1	4.5	4.3	4.2	4.0	3.9	4.1	4.1

1 Includes persons with a high school diploma or equivalent.

2 Includes persons with bachelor's, master's, professional, and doctoral degrees.

NOTE: Updated population controls are introduced annually with the release of January data.

**HOUSEHOLD DATA**

**Table A-5. Employment status of the civilian population 18 years and over by veteran status, period of service, and sex, not seasonally adjusted**

[Numbers in thousands]

Employment status, veteran status, and period of service	Total		Men		Women	
	July 2011	July 2012	July 2011	July 2012	July 2011	July 2012
<b>VETERANS, 18 years and over</b>						
Civilian noninstitutional population.....	21,596	21,163	19,794	19,349	1,802	1,814
Civilian labor force.....	11,387	10,925	10,324	9,845	1,063	1,080
Participation rate.....	52.7	51.6	52.2	50.9	59.0	59.5
Employed.....	10,412	10,173	9,459	9,171	953	1,002
Employment-population ratio.....	48.2	48.1	47.8	47.4	52.9	55.2
Unemployed.....	975	752	865	674	110	79
Unemployment rate.....	8.6	6.9	8.4	6.8	10.3	7.3
Not in labor force.....	10,209	10,238	9,470	9,504	739	734
<b>  Gulf War-era II veterans</b>						
Civilian noninstitutional population.....	2,339	2,453	1,937	2,056	402	397
Civilian labor force.....	1,878	1,945	1,615	1,683	262	263
Participation rate.....	80.3	79.3	83.4	81.9	65.3	66.1
Employed.....	1,645	1,771	1,420	1,524	226	247
Employment-population ratio.....	70.3	72.2	73.3	74.2	56.1	62.2
Unemployed.....	232	174	195	159	37	15
Unemployment rate.....	12.4	8.9	12.1	9.4	14.1	5.9
Not in labor force.....	461	507	322	373	139	135
<b>  Gulf War-era I veterans</b>						
Civilian noninstitutional population.....	2,947	3,158	2,457	2,668	490	489
Civilian labor force.....	2,456	2,599	2,096	2,237	359	361
Participation rate.....	83.3	82.3	85.3	83.8	73.3	73.8
Employed.....	2,265	2,428	1,939	2,098	326	330
Employment-population ratio.....	76.9	76.9	78.9	78.6	66.6	67.5
Unemployed.....	191	170	158	139	33	31
Unemployment rate.....	7.8	6.5	7.5	6.2	9.2	8.5
Not in labor force.....	492	559	361	431	131	128
<b>  World War II, Korean War, and Vietnam-era veterans</b>						
Civilian noninstitutional population.....	10,426	9,868	10,088	9,551	338	318
Civilian labor force.....	3,620	3,217	3,528	3,125	92	92
Participation rate.....	34.7	32.6	35.0	32.7	27.2	29.1
Employed.....	3,328	3,020	3,242	2,932	86	88
Employment-population ratio.....	31.9	30.6	32.1	30.7	25.3	27.7
Unemployed.....	292	197	286	193	6	4
Unemployment rate.....	8.1	6.1	8.1	6.2	6.7	4.6
Not in labor force.....	6,806	6,652	6,560	6,426	246	225
<b>  Veterans of other service periods</b>						
Civilian noninstitutional population.....	5,884	5,684	5,312	5,074	573	610
Civilian labor force.....	3,434	3,164	3,085	2,800	349	364
Participation rate.....	58.4	55.7	58.1	55.2	61.0	59.7
Employed.....	3,174	2,953	2,859	2,617	316	336
Employment-population ratio.....	53.9	52.0	53.8	51.6	55.1	55.1
Unemployed.....	260	211	226	183	34	28
Unemployment rate.....	7.6	6.7	7.3	6.5	9.6	7.7
Not in labor force.....	2,450	2,520	2,227	2,274	223	246
<b>NONVETERANS, 18 years and over</b>						
Civilian noninstitutional population.....	209,487	213,366	92,092	93,604	117,395	119,762
Civilian labor force.....	140,959	142,848	71,285	72,405	69,674	70,443
Participation rate.....	67.3	66.9	77.4	77.4	59.3	58.8
Employed.....	128,257	130,997	64,860	66,608	63,397	64,389
Employment-population ratio.....	61.2	61.4	70.4	71.2	54.0	53.8
Unemployed.....	12,702	11,850	6,425	5,797	6,277	6,054
Unemployment rate.....	9.0	8.3	9.0	8.0	9.0	8.6
Not in labor force.....	68,528	70,518	20,806	21,199	47,721	49,319

NOTE: Veterans served on active duty in the U.S. Armed Forces and were not on active duty at the time of the survey. Nonveterans never served on active duty in the U.S. Armed Forces. Veterans could have served anywhere in the world during these periods of service: Gulf War era II (September 2001-present), Gulf War era I (August 1990-August 2001), Vietnam era (August 1964-April 1975), Korean War (July 1950-January 1955), World War II (December 1941-December 1946), and other service periods (all other time periods). Veterans who served in more than one wartime period are classified only in the most recent one. Veterans who served during one of the selected wartime periods and another period are classified only in the wartime period. Updated population controls are introduced annually with the release of January data.



**HOUSEHOLD DATA**

**Table A-6. Employment status of the civilian population by sex, age, and disability status, not seasonally adjusted**

[Numbers in thousands]

Employment status, sex, and age	Persons with a disability		Persons with no disability	
	July 2011	July 2012	July 2011	July 2012
<b>TOTAL, 16 years and over</b>				
Civilian noninstitutional population.....	27,278	28,007	212,393	215,346
Civilian labor force.....	5,773	5,791	149,039	150,735
Participation rate.....	21.2	20.7	70.2	70.0
Employed.....	4,802	5,004	135,581	138,122
Employment-population ratio.....	17.6	17.9	63.8	64.1
Unemployed.....	970	787	13,458	12,613
Unemployment rate.....	16.8	13.6	9.0	8.4
Not in labor force.....	21,505	22,216	63,354	64,611
<b>Men, 16 to 64 years</b>				
Civilian labor force.....	2,687	2,612	76,208	76,636
Participation rate.....	36.2	34.4	83.3	83.9
Employed.....	2,215	2,289	69,266	70,401
Employment-population ratio.....	29.9	30.2	75.7	77.0
Unemployed.....	472	323	6,942	6,235
Unemployment rate.....	17.6	12.4	9.1	8.1
Not in labor force.....	4,734	4,971	15,270	14,742
<b>Women, 16 to 64 years</b>				
Civilian labor force.....	2,232	2,207	66,685	67,470
Participation rate.....	29.7	28.7	71.2	71.2
Employed.....	1,816	1,817	60,555	61,567
Employment-population ratio.....	24.2	23.6	64.7	64.9
Unemployed.....	416	390	6,129	5,903
Unemployment rate.....	18.6	17.7	9.2	8.7
Not in labor force.....	5,272	5,487	26,949	27,352
<b>Both sexes, 65 years and over</b>				
Civilian labor force.....	854	973	6,147	6,629
Participation rate.....	6.9	7.6	22.5	22.7
Employed.....	771	898	5,761	6,155
Employment-population ratio.....	6.2	7.1	21.1	21.1
Unemployed.....	83	74	386	474
Unemployment rate.....	9.7	7.6	6.3	7.2
Not in labor force.....	11,499	11,758	21,135	22,517

NOTE: A person with a disability has at least one of the following conditions: is deaf or has serious difficulty hearing; is blind or has serious difficulty seeing even when wearing glasses; has serious difficulty concentrating, remembering, or making decisions because of a physical, mental, or emotional condition; has serious difficulty walking or climbing stairs; has difficulty dressing or bathing; or has difficulty doing errands alone such as visiting a doctor's office or shopping because of a physical, mental, or emotional condition. Updated population controls are introduced annually with the release of January data.

**HOUSEHOLD DATA**

**Table A-7. Employment status of the civilian population by nativity and sex, not seasonally adjusted**

[Numbers in thousands]

Employment status and nativity	Total		Men		Women	
	July 2011	July 2012	July 2011	July 2012	July 2011	July 2012
<b>Foreign born, 16 years and over</b>						
Civilian noninstitutional population.....	36,576	37,627	18,247	18,428	18,328	19,199
Civilian labor force.....	24,516	25,180	14,575	14,575	9,941	10,606
Participation rate.....	67.0	66.9	79.9	79.1	54.2	55.2
Employed.....	22,264	23,211	13,291	13,553	8,973	9,657
Employment-population ratio.....	60.9	61.7	72.8	73.5	49.0	50.3
Unemployed.....	2,252	1,970	1,284	1,021	968	948
Unemployment rate.....	9.2	7.8	8.8	7.0	9.7	8.9
Not in labor force.....	12,060	12,446	3,673	3,853	8,387	8,593
<b>Native born, 16 years and over</b>						
Civilian noninstitutional population.....	203,095	205,727	98,100	98,954	104,996	106,774
Civilian labor force.....	130,296	131,346	68,297	68,979	61,999	62,367
Participation rate.....	64.2	63.8	69.6	69.7	59.0	58.4
Employed.....	118,120	119,916	61,917	63,137	56,203	56,778
Employment-population ratio.....	58.2	58.3	63.1	63.8	53.5	53.2
Unemployed.....	12,176	11,430	6,380	5,842	5,796	5,589
Unemployment rate.....	9.3	8.7	9.3	8.5	9.3	9.0
Not in labor force.....	72,799	74,381	29,803	29,975	42,996	44,407

NOTE: The foreign born are those residing in the United States who were not U.S. citizens at birth. That is, they were born outside the United States or one of its outlying areas such as Puerto Rico or Guam, to parents neither of whom was a U.S. citizen. The native born are persons who were born in the United States or one of its outlying areas such as Puerto Rico or Guam or who were born abroad of at least one parent who was a U.S. citizen. Updated population controls are introduced annually with the release of January data.

## HOUSEHOLD DATA

**Table A-8. Employed persons by class of worker and part-time status**

[In thousands]

Category	Not seasonally adjusted			Seasonally adjusted					
	July 2011	June 2012	July 2012	July 2011	Mar. 2012	Apr. 2012	May 2012	June 2012	July 2012
<b>CLASS OF WORKER</b>									
Agriculture and related industries.....	2,484	2,377	2,477	2,250	2,218	2,150	2,274	2,206	2,235
Wage and salary workers <sup>1</sup> .....	1,596	1,514	1,584	1,415	1,394	1,342	1,423	1,399	1,401
Self-employed workers, unincorporated.....	867	826	843	816	811	793	815	786	791
Unpaid family workers.....	21	37	49	—	—	—	—	—	—
Nonagricultural industries.....	137,900	140,824	140,649	136,993	139,984	139,749	140,037	140,205	139,929
Wage and salary workers <sup>1</sup> .....	129,200	131,694	131,619	128,554	131,370	131,136	131,322	131,308	131,043
Government.....	19,661	19,679	19,332	20,306	20,338	19,896	20,059	19,938	20,015
Private industries.....	109,538	112,015	112,287	108,217	111,114	111,249	111,421	111,433	110,974
Private households.....	822	832	818	—	—	—	—	—	—
Other industries.....	108,716	111,183	111,469	107,478	110,469	110,527	110,613	110,671	110,251
Self-employed workers, unincorporated.....	8,618	9,049	8,957	8,532	8,514	8,512	8,598	8,787	8,824
Unpaid family workers.....	82	82	74	—	—	—	—	—	—
<b>PERSONS AT WORK PART TIME<sup>2</sup></b>									
<b>All industries</b>									
Part time for economic reasons <sup>3</sup> .....	8,514	8,394	8,316	8,437	7,672	7,853	8,098	8,210	8,246
Slack work or business conditions.....	5,542	5,378	5,235	5,695	5,081	5,187	5,147	5,446	5,342
Could only find part-time work.....	2,555	2,599	2,637	2,538	2,341	2,367	2,649	2,514	2,576
Part time for noneconomic reasons <sup>4</sup> .....	16,680	17,654	17,200	18,280	18,523	18,832	19,393	18,829	18,866
<b>Nonagricultural industries</b>									
Part time for economic reasons <sup>3</sup> .....	8,372	8,268	8,218	8,264	7,584	7,737	7,982	8,075	8,111
Slack work or business conditions.....	5,438	5,294	5,175	5,586	5,000	5,086	5,078	5,355	5,282
Could only find part-time work.....	2,536	2,587	2,607	2,510	2,295	2,324	2,616	2,493	2,559
Part time for noneconomic reasons <sup>4</sup> .....	16,283	17,285	16,863	17,883	18,100	18,418	18,930	18,438	18,543

1 Includes self-employed workers whose businesses are incorporated.

2 Refers to those who worked 1 to 34 hours during the survey reference week and excludes employed persons who were absent from their jobs for the entire week.

3 Refers to those who worked 1 to 34 hours during the reference week for an economic reason such as slack work or unfavorable business conditions, inability to find full-time work, or seasonal declines in demand.

4 Refers to persons who usually work part time for noneconomic reasons such as childcare problems, family or personal obligations, school or training, retirement or Social Security limits on earnings, and other reasons. This excludes persons who usually work full time but worked only 1 to 34 hours during the reference week for reasons such as vacations, holidays, illness, and bad weather.

- Data not available.

NOTE: Detail for the seasonally adjusted data shown in this table will not necessarily add to totals because of the independent seasonal adjustment of the various series. Updated population controls are introduced annually with the release of January data.

# HOUSEHOLD DATA

## Table A-9. Selected employment indicators

[Numbers in thousands]

Characteristic	Not seasonally adjusted			Seasonally adjusted					
	July 2011	June 2012	July 2012	July 2011	Mar. 2012	Apr. 2012	May 2012	June 2012	July 2012
<b>AGE AND SEX</b>									
Total, 16 years and over.....	140,384	143,202	143,126	139,450	142,034	141,865	142,287	142,415	142,220
16 to 19 years.....	5,193	5,178	5,560	4,262	4,335	4,321	4,388	4,528	4,546
16 to 17 years.....	1,714	1,694	1,956	1,358	1,395	1,421	1,418	1,471	1,540
18 to 19 years.....	3,478	3,484	3,604	2,890	2,955	2,875	2,968	3,069	3,012
20 years and over.....	135,191	138,024	137,566	135,188	137,699	137,544	137,899	137,887	137,674
20 to 24 years.....	13,440	13,729	13,901	12,889	13,371	13,329	13,429	13,361	13,364
25 years and over.....	121,751	124,295	123,665	122,231	124,407	124,166	124,472	124,506	124,203
25 to 54 years.....	93,333	94,005	93,769	93,541	94,267	94,128	94,205	94,069	93,957
25 to 34 years.....	30,431	30,656	30,601	30,328	30,568	30,724	30,714	30,650	30,527
35 to 44 years.....	30,157	30,431	30,389	30,253	30,672	30,539	30,519	30,450	30,474
45 to 54 years.....	32,745	32,917	32,779	32,960	33,027	32,866	32,971	32,969	32,956
55 years and over.....	28,418	30,290	29,896	28,690	30,140	30,038	30,268	30,437	30,247
Men, 16 years and over.....	75,208	76,338	76,691	74,011	75,369	75,256	75,401	75,486	75,466
16 to 19 years.....	2,619	2,603	2,827	2,081	2,083	2,136	2,173	2,227	2,238
16 to 17 years.....	888	779	912	654	656	685	655	654	666
18 to 19 years.....	1,731	1,823	1,916	1,434	1,424	1,461	1,513	1,598	1,577
20 years and over.....	72,588	73,735	73,863	71,930	73,286	73,119	73,229	73,259	73,227
20 to 24 years.....	7,127	7,130	7,313	6,733	6,927	6,863	6,898	6,849	6,921
25 years and over.....	65,461	66,606	66,550	65,181	66,327	66,156	66,308	66,420	66,285
25 to 54 years.....	50,329	50,538	50,581	50,013	50,393	50,329	50,304	50,357	50,256
25 to 34 years.....	16,665	16,664	16,726	16,480	16,538	16,624	16,654	16,633	16,555
35 to 44 years.....	16,447	16,431	16,583	16,371	16,470	16,425	16,421	16,401	16,488
45 to 54 years.....	17,217	17,442	17,272	17,162	17,385	17,280	17,229	17,323	17,214
55 years and over.....	15,133	16,068	15,969	15,168	15,934	15,827	16,004	16,064	16,029
Women, 16 years and over.....	65,176	66,863	66,435	65,439	66,665	66,609	66,886	66,929	66,754
16 to 19 years.....	2,573	2,575	2,733	2,182	2,252	2,184	2,215	2,301	2,308
16 to 17 years.....	826	915	1,045	704	739	736	762	817	873
18 to 19 years.....	1,747	1,660	1,688	1,456	1,531	1,414	1,454	1,471	1,434
20 years and over.....	62,603	64,288	63,703	63,257	64,413	64,425	64,671	64,628	64,446
20 to 24 years.....	6,313	6,599	6,588	6,156	6,444	6,467	6,531	6,512	6,444
25 years and over.....	56,290	57,689	57,115	57,050	58,079	58,010	58,165	58,086	57,918
25 to 54 years.....	43,004	43,467	43,188	43,528	43,873	43,800	43,901	43,712	43,700
25 to 34 years.....	13,767	13,992	13,875	13,848	14,030	14,099	14,060	14,016	13,972
35 to 44 years.....	13,710	14,000	13,805	13,882	14,202	14,114	14,098	14,050	13,986
45 to 54 years.....	15,528	15,475	15,507	15,798	15,642	15,586	15,742	15,646	15,743
55 years and over.....	13,285	14,222	13,927	13,522	14,206	14,211	14,264	14,373	14,218
<b>MARITAL STATUS</b>									
Married men, spouse present.....	43,213	43,740	43,743	43,210	43,635	43,582	43,798	43,712	43,715
Married women, spouse present.....	33,243	34,177	33,734	33,809	34,325	34,207	34,620	34,526	34,381
Women who maintain families.....	9,224	9,264	9,354	-	-	-	-	-	-
<b>FULL- OR PART-TIME STATUS</b>									
Full-time workers <sup>1</sup> .....	113,759	116,024	116,131	112,006	115,290	114,478	114,212	114,573	114,345
Part-time workers <sup>2</sup> .....	26,624	27,178	26,995	27,582	26,912	27,420	28,038	27,894	27,925
<b>MULTIPLE JOBHOLDERS</b>									
Total multiple jobholders.....	6,724	6,707	6,741	6,777	6,985	6,870	6,959	6,769	6,845
Percent of total employed.....	4.8	4.7	4.7	4.9	4.9	4.8	4.9	4.8	4.8
<b>SELF-EMPLOYMENT</b>									
Self-employed workers, incorporated.....	5,170	5,206	5,256	-	-	-	-	-	-
Self-employed workers, unincorporated.....	9,485	9,875	9,800	9,348	9,325	9,305	9,413	9,572	9,616

1 Employed full-time workers are persons who usually work 35 hours or more per week.

2 Employed part-time workers are persons who usually work less than 35 hours per week.

- Data not available.

NOTE: Detail for the seasonally adjusted data shown in this table will not necessarily add to totals because of the independent seasonal adjustment of the various series. Updated population controls are introduced annually with the release of January data.

# HOUSEHOLD DATA

## Table A-10. Selected unemployment indicators, seasonally adjusted

Characteristic	Number of unemployed persons (in thousands)			Unemployment rates					
	July 2011	June 2012	July 2012	July 2011	Mar. 2012	Apr. 2012	May 2012	June 2012	July 2012
<b>AGE AND SEX</b>									
Total, 16 years and over.....	13,908	12,749	12,794	9.1	8.2	8.1	8.2	8.2	8.3
16 to 19 years.....	1,412	1,408	1,424	24.9	25.0	24.9	24.6	23.7	23.8
16 to 17 years.....	534	539	559	28.2	28.8	26.4	26.5	26.8	26.6
18 to 19 years.....	872	864	860	23.2	22.9	24.5	23.5	22.0	22.2
20 years and over.....	12,496	11,341	11,370	8.5	7.5	7.4	7.6	7.6	7.6
20 to 24 years.....	2,196	2,119	2,087	14.6	13.2	13.2	12.9	13.7	13.5
25 years and over.....	10,280	9,268	9,273	7.8	6.8	6.8	6.9	6.9	6.9
25 to 54 years.....	8,141	7,245	7,268	8.0	7.1	6.9	7.1	7.2	7.2
25 to 34 years.....	3,257	2,739	2,728	9.7	8.6	8.1	8.2	8.2	8.2
35 to 44 years.....	2,319	2,289	2,242	7.1	6.4	6.5	6.8	7.0	6.9
45 to 54 years.....	2,566	2,217	2,298	7.2	6.2	6.2	6.4	6.3	6.5
55 years and over.....	2,107	1,998	1,984	6.8	6.2	6.3	6.5	6.2	6.2
Men, 16 years and over.....	7,825	6,964	6,929	9.6	8.3	8.2	8.4	8.4	8.4
16 to 19 years.....	777	798	804	27.2	26.7	27.2	26.8	26.4	26.4
16 to 17 years.....	273	294	285	29.4	30.1	28.9	28.9	31.0	30.0
18 to 19 years.....	495	497	512	25.7	25.1	26.3	25.7	23.7	24.5
20 years and over.....	7,047	6,166	6,125	8.9	7.6	7.5	7.8	7.8	7.7
20 to 24 years.....	1,259	1,244	1,236	15.8	14.1	14.1	14.1	15.4	15.2
25 years and over.....	5,786	4,963	4,873	8.2	6.8	6.7	7.0	7.0	6.8
25 to 54 years.....	4,584	3,806	3,754	8.4	7.0	6.9	7.0	7.0	7.0
25 to 34 years.....	1,861	1,405	1,408	10.1	8.6	8.1	7.9	7.8	7.8
35 to 44 years.....	1,314	1,231	1,160	7.4	6.5	6.4	6.6	7.0	6.6
45 to 54 years.....	1,409	1,171	1,186	7.6	6.0	6.1	6.5	6.3	6.4
55 years and over.....	1,201	1,157	1,119	7.3	6.3	6.3	7.0	6.7	6.5
Women, 16 years and over.....	6,084	5,785	5,865	8.5	8.1	8.0	7.9	8.0	8.1
16 to 19 years.....	635	610	620	22.5	23.4	22.5	22.3	21.0	21.2
16 to 17 years.....	261	245	274	27.0	27.6	23.8	24.4	23.1	23.9
18 to 19 years.....	377	367	349	20.6	20.7	22.7	21.2	20.0	19.6
20 years and over.....	5,449	5,175	5,244	7.9	7.4	7.4	7.4	7.4	7.5
20 to 24 years.....	936	875	851	13.2	12.2	12.3	11.6	11.8	11.7
25 years and over.....	4,494	4,304	4,400	7.3	6.8	6.8	6.9	6.9	7.1
25 to 54 years.....	3,557	3,439	3,514	7.6	7.2	7.0	7.2	7.3	7.4
25 to 34 years.....	1,396	1,334	1,320	9.2	8.6	8.2	8.4	8.7	8.6
35 to 44 years.....	1,005	1,059	1,082	6.7	6.4	6.7	7.0	7.0	7.2
45 to 54 years.....	1,157	1,046	1,112	6.8	6.5	6.2	6.1	6.3	6.6
55 years and over <sup>1</sup> .....	1,042	879	979	7.3	5.9	5.8	5.6	5.8	6.6
<b>MARITAL STATUS</b>									
Married men, spouse present.....	2,788	2,251	2,281	6.1	5.1	5.2	5.3	4.9	5.0
Married women, spouse present.....	2,024	1,957	2,070	5.6	5.3	5.3	4.9	5.4	5.7
Women who maintain families <sup>1</sup> .....	1,270	1,237	1,239	12.1	10.8	10.2	10.9	11.8	11.7
<b>FULL- OR PART-TIME STATUS</b>									
Full-time workers <sup>2</sup> .....	12,103	10,890	10,829	9.8	8.6	8.5	8.7	8.7	8.7
Part-time workers <sup>3</sup> .....	1,777	1,877	1,950	6.1	6.2	6.3	6.1	6.3	6.5

1 Not seasonally adjusted.

2 Full-time workers are unemployed persons who have expressed a desire to work full time (35 hours or more per week) or are on layoff from full-time jobs.

3 Part-time workers are unemployed persons who have expressed a desire to work part time (less than 35 hours per week) or are on layoff from part-time jobs.

NOTE: Detail for the seasonally adjusted data shown in this table will not necessarily add to totals because of the independent seasonal adjustment of the various series. Updated population controls are introduced annually with the release of January data.

# HOUSEHOLD DATA

## Table A-11. Unemployed persons by reason for unemployment

[Numbers in thousands]

Reason	Not seasonally adjusted			Seasonally adjusted					
	July 2011	June 2012	July 2012	July 2011	Mar. 2012	Apr. 2012	May 2012	June 2012	July 2012
<b>NUMBER OF UNEMPLOYED</b>									
Job losers and persons who completed temporary jobs.....	8,107	6,927	7,151	8,146	7,020	6,852	6,989	7,207	7,123
On temporary layoff.....	1,294	1,188	1,525	1,246	1,120	1,083	1,106	1,331	1,417
Not on temporary layoff.....	6,813	5,739	5,626	6,900	5,900	5,768	5,883	5,875	5,705
Permanent job losers.....	5,509	4,490	4,377	5,517	4,632	4,529	4,553	4,560	4,387
Persons who completed temporary jobs.....	1,305	1,249	1,248	1,383	1,268	1,239	1,330	1,315	1,319
Job leavers.....	973	879	897	936	1,117	997	891	936	878
Reentrants.....	3,603	3,556	3,579	3,424	3,269	3,341	3,439	3,227	3,380
New entrants.....	1,745	1,822	1,773	1,274	1,433	1,384	1,367	1,331	1,311
<b>PERCENT DISTRIBUTION</b>									
Job losers and persons who completed temporary jobs.....	56.2	52.5	53.4	59.1	54.7	54.5	55.1	56.7	56.1
On temporary layoff.....	9.0	9.0	11.4	9.0	8.7	8.6	8.7	10.5	11.2
Not on temporary layoff.....	47.2	43.5	42.0	50.1	46.0	45.9	46.4	46.3	45.0
Job leavers.....	6.7	6.7	6.7	6.8	8.7	7.9	7.0	7.4	6.9
Reentrants.....	25.0	27.0	26.7	24.8	25.5	26.6	27.1	25.4	26.6
New entrants.....	12.1	13.8	13.2	9.2	11.2	11.0	10.8	10.5	10.3
<b>UNEMPLOYED AS A PERCENT OF THE CIVILIAN LABOR FORCE</b>									
Job losers and persons who completed temporary jobs.....	5.2	4.4	4.6	5.3	4.5	4.4	4.5	4.6	4.6
Job leavers.....	0.6	0.6	0.6	0.6	0.7	0.6	0.6	0.6	0.6
Reentrants.....	2.3	2.3	2.3	2.2	2.1	2.2	2.2	2.1	2.2
New entrants.....	1.1	1.2	1.1	0.8	0.9	0.9	0.9	0.9	0.8

NOTE: Updated population controls are introduced annually with the release of January data.

## HOUSEHOLD DATA

**Table A-12. Unemployed persons by duration of unemployment**

[Numbers in thousands]

Duration	Not seasonally adjusted			Seasonally adjusted					
	July 2011	June 2012	July 2012	July 2011	Mar. 2012	Apr. 2012	May 2012	June 2012	July 2012
<b>NUMBER OF UNEMPLOYED</b>									
Less than 5 weeks.....	2,952	3,627	3,021	2,675	2,572	2,543	2,580	2,810	2,711
5 to 14 weeks.....	3,496	2,546	3,585	3,063	2,754	2,814	3,002	2,826	3,092
15 weeks and over.....	7,980	7,010	6,794	8,134	7,175	6,984	7,073	7,182	6,945
15 to 26 weeks.....	1,762	1,793	1,547	1,972	1,867	1,884	1,662	1,811	1,760
27 weeks and over.....	6,218	5,217	5,247	6,162	5,308	5,101	5,411	5,370	5,185
Average (mean) duration, in weeks <sup>1</sup> .....	39.0	38.2	37.4	40.2	39.4	39.1	39.7	39.9	38.8
Median duration, in weeks.....	19.7	17.4	15.2	21.2	19.9	19.4	20.1	19.8	16.7
<b>PERCENT DISTRIBUTION</b>									
Less than 5 weeks.....	20.5	27.5	22.5	19.3	20.6	20.6	20.4	21.9	21.3
5 to 14 weeks.....	24.2	19.3	26.8	22.1	22.0	22.8	23.7	22.0	24.3
15 weeks and over.....	55.3	53.2	50.7	58.6	57.4	56.6	55.9	56.0	54.5
15 to 26 weeks.....	12.2	13.6	11.5	14.2	14.9	15.3	13.1	14.1	13.8
27 weeks and over.....	43.1	39.6	39.2	44.4	42.5	41.3	42.8	41.9	40.7

<sup>1</sup> Beginning in January 2011, this series reflects a change to the collection of data on unemployment duration. For more information, see [www.bls.gov/cps/duration.htm](http://www.bls.gov/cps/duration.htm).

NOTE: Updated population controls are introduced annually with the release of January data.

**HOUSEHOLD DATA**

**Table A-13. Employed and unemployed persons by occupation, not seasonally adjusted**

[Numbers in thousands]

Occupation	Employed		Unemployed		Unemployment rates	
	July 2011	July 2012	July 2011	July 2012	July 2011	July 2012
Total, 16 years and over <sup>1</sup> .....	140,384	143,126	14,428	13,400	9.3	8.6
Management, professional, and related occupations.....	51,662	53,165	2,742	2,666	5.0	4.8
Management, business, and financial operations occupations.....	21,747	22,943	1,053	912	4.6	3.8
Professional and related occupations.....	29,915	30,222	1,689	1,753	5.3	5.5
Service occupations.....	25,584	26,565	2,764	2,666	9.8	9.1
Sales and office occupations.....	33,131	32,835	3,288	2,836	9.0	8.0
Sales and related occupations.....	15,503	15,536	1,603	1,400	9.4	8.3
Office and administrative support occupations.....	17,628	17,299	1,685	1,436	8.7	7.7
Natural resources, construction, and maintenance occupations.....	13,417	13,174	1,744	1,529	11.5	10.4
Farming, fishing, and forestry occupations.....	1,166	1,216	157	138	11.9	10.2
Construction and extraction occupations.....	7,317	7,157	1,161	1,056	13.7	12.9
Installation, maintenance, and repair occupations.....	4,934	4,801	426	335	7.9	6.5
Production, transportation, and material moving occupations.....	16,590	17,388	2,103	1,900	11.2	9.8
Production occupations.....	8,055	8,545	1,049	903	11.5	9.6
Transportation and material moving occupations.....	8,534	8,843	1,054	997	11.0	10.1

<sup>1</sup> Persons with no previous work experience and persons whose last job was in the U.S. Armed Forces are included in the unemployed total.

NOTE: Updated population controls are introduced annually with the release of January data.



**HOUSEHOLD DATA**

**Table A-14. Unemployed persons by industry and class of worker, not seasonally adjusted**

Industry and class of worker	Number of unemployed persons (in thousands)		Unemployment rates	
	July 2011	July 2012	July 2011	July 2012
Total, 16 years and over <sup>1</sup> .....	14,428	13,400	9.3	8.6
Nonagricultural private wage and salary workers.....	10,515	9,692	8.8	7.9
Mining, quarrying, and oil and gas extraction.....	53	83	6.0	7.6
Construction.....	1,137	994	13.6	12.3
Manufacturing.....	1,418	1,128	9.2	7.2
Durable goods.....	934	703	9.6	7.2
Nondurable goods.....	484	426	8.5	7.3
Wholesale and retail trade.....	1,916	1,780	9.4	8.6
Transportation and utilities.....	486	392	7.8	6.5
Information.....	237	190	7.6	6.7
Financial activities.....	552	458	6.0	5.1
Professional and business services.....	1,389	1,378	9.4	9.1
Education and health services.....	1,263	1,436	5.9	6.5
Leisure and hospitality.....	1,510	1,420	10.9	9.7
Other services.....	554	433	8.6	6.7
Agriculture and related private wage and salary workers.....	166	131	9.8	7.9
Government workers.....	1,349	1,182	6.4	5.7
Self-employed workers, unincorporated, and unpaid family workers.....	653	623	6.4	5.9

<sup>1</sup> Persons with no previous work experience and persons whose last job was in the U.S. Armed Forces are included in the unemployed total.

NOTE: Updated population controls are introduced annually with the release of January data.

**HOUSEHOLD DATA**

**Table A-15. Alternative measures of labor underutilization**

[Percent]

Measure	Not seasonally adjusted			Seasonally adjusted					
	July 2011	June 2012	July 2012	July 2011	Mar. 2012	Apr. 2012	May 2012	June 2012	July 2012
U-1 Persons unemployed 15 weeks or longer, as a percent of the civilian labor force.....	5.2	4.5	4.3	5.3	4.6	4.5	4.6	4.6	4.5
U-2 Job losers and persons who completed temporary jobs, as a percent of the civilian labor force.....	5.2	4.4	4.6	5.3	4.5	4.4	4.5	4.6	4.6
U-3 Total unemployed, as a percent of the civilian labor force (official unemployment rate).....	9.3	8.4	8.6	9.1	8.2	8.1	8.2	8.2	8.3
U-4 Total unemployed plus discouraged workers, as a percent of the civilian labor force plus discouraged workers.....	10.0	8.9	9.1	9.7	8.7	8.7	8.7	8.7	8.8
U-5 Total unemployed, plus discouraged workers, plus all other persons marginally attached to the labor force, as a percent of the civilian labor force plus all persons marginally attached to the labor force.....	10.9	9.9	10.0	10.7	9.6	9.5	9.6	9.7	9.7
U-6 Total unemployed, plus all persons marginally attached to the labor force, plus total employed part time for economic reasons, as a percent of the civilian labor force plus all persons marginally attached to the labor force.....	16.3	15.1	15.2	16.1	14.5	14.5	14.8	14.9	15.0

NOTE: Persons marginally attached to the labor force are those who currently are neither working nor looking for work but indicate that they want and are available for a job and have looked for work sometime in the past 12 months. Discouraged workers, a subset of the marginally attached, have given a job-market related reason for not currently looking for work. Persons employed part time for economic reasons are those who want and are available for full-time work but have had to settle for a part-time schedule. Updated population controls are introduced annually with the release of January data.

## HOUSEHOLD DATA

**Table A-16. Persons not in the labor force and multiple jobholders by sex, not seasonally adjusted**

[Numbers in thousands]

Category	Total		Men		Women	
	July 2011	July 2012	July 2011	July 2012	July 2011	July 2012
<b>NOT IN THE LABOR FORCE</b>						
Total not in the labor force.....	84,859	86,828	33,476	33,828	51,383	53,000
Persons who currently want a job.....	6,810	6,837	3,072	3,062	3,738	3,775
Marginally attached to the labor force <sup>1</sup> .....	2,785	2,529	1,392	1,328	1,393	1,200
Discouraged workers <sup>2</sup> .....	1,119	852	639	514	480	338
Other persons marginally attached to the labor force <sup>3</sup> .....	1,667	1,676	754	815	913	862
<b>MULTIPLE JOBHOLDERS</b>						
Total multiple jobholders <sup>4</sup> .....	6,724	6,741	3,371	3,409	3,353	3,333
Percent of total employed.....	4.8	4.7	4.5	4.4	5.1	5.0
Primary job full time, secondary job part time.....	3,569	3,459	1,994	1,939	1,574	1,520
Primary and secondary jobs both part time.....	1,726	1,871	628	670	1,098	1,201
Primary and secondary jobs both full time.....	246	271	151	191	95	80
Hours vary on primary or secondary job.....	1,118	1,065	557	567	561	498

1 Data refer to persons who want a job, have searched for work during the prior 12 months, and were available to take a job during the reference week, but had not looked for work in the past 4 weeks.

2 Includes those who did not actively look for work in the prior 4 weeks for reasons such as thinks no work available, could not find work, lacks schooling or training, employer thinks too young or old, and other types of discrimination.

3 Includes those who did not actively look for work in the prior 4 weeks for such reasons as school or family responsibilities, ill health, and transportation problems, as well as a number for whom reason for nonparticipation was not determined.

4 Includes a small number of persons who work part time on their primary job and full time on their secondary job(s), not shown separately.

NOTE: Updated population controls are introduced annually with the release of January data.

**ESTABLISHMENT DATA**

**Table B-1. Employees on nonfarm payrolls by industry sector and selected industry detail**

[In thousands]

Industry	Not seasonally adjusted				Seasonally adjusted				Change from: June2012 - July2012 <sup>P</sup>
	July 2011	May 2012	June 2012 <sup>P</sup>	July 2012 <sup>P</sup>	July 2011	May 2012	June 2012 <sup>P</sup>	July 2012 <sup>P</sup>	
Total nonfarm.....	131,038	133,723	134,072	132,868	131,407	133,018	133,082	133,245	163
Total private.....	110,251	111,369	112,165	112,192	109,374	111,072	111,145	111,317	172
Goods-producing.....	18,406	18,321	18,609	18,685	18,071	18,307	18,320	18,344	24
Mining and logging.....	809	842	851	855	795	842	841	841	0
Logging.....	50.1	48.4	50.0	51.9	48.4	50.0	50.2	50.0	-0.2
Mining.....	759.0	793.1	800.7	803.4	746.1	792.1	790.5	790.6	0.1
Oil and gas extraction.....	177.3	193.5	197.4	197.9	175.2	193.5	194.8	195.5	0.7
Mining, except oil and gas <sup>1</sup> .....	225.3	222.3	222.8	223.7	218.4	219.2	216.6	217.3	0.7
Coal mining.....	86.4	85.2	84.0	82.2	86.4	84.9	83.6	82.8	-0.8
Support activities for mining.....	356.4	377.3	380.5	381.8	352.5	379.4	379.1	377.8	-1.3
Construction.....	5,777	5,548	5,718	5,780	5,508	5,510	5,514	5,513	-1
Construction of buildings.....	1,258.4	1,218.4	1,251.6	1,265.6	1,215.8	1,223.4	1,218.9	1,224.2	5.3
Residential building.....	583.8	561.2	580.2	589.7	560.1	564.3	561.2	567.0	5.8
Nonresidential building.....	674.6	657.2	671.4	675.9	655.7	659.1	657.7	657.2	-0.5
Heavy and civil engineering construction.....	885.6	849.7	878.5	895.6	827.0	829.8	831.6	837.8	6.2
Specialty trade contractors.....	3,632.5	3,479.6	3,587.8	3,618.6	3,464.9	3,456.5	3,463.8	3,451.2	-12.6
Residential specialty trade contractors.....	1,527.1	1,472.0	1,520.7	1,532.1	1,450.1	1,454.9	1,458.7	1,455.6	-3.1
Nonresidential specialty trade contractors.....	2,105.4	2,007.6	2,067.1	2,086.5	2,014.8	2,001.6	2,005.1	1,995.6	-9.5
Manufacturing.....	11,820	11,931	12,040	12,050	11,768	11,955	11,965	11,990	25
Durable goods.....	7,315	7,473	7,535	7,529	7,303	7,478	7,488	7,512	24
Wood products.....	336.1	331.9	336.0	336.6	328.8	330.4	329.4	329.6	0.2
Nonmetallic mineral products.....	378.8	367.3	371.7	372.4	367.1	363.9	361.6	361.5	-0.1
Primary metals.....	391.5	408.8	409.5	408.9	393.0	409.1	408.7	410.1	1.4
Fabricated metal products.....	1,358.9	1,399.7	1,414.4	1,416.5	1,355.3	1,402.0	1,407.0	1,412.2	5.2
Machinery.....	1,064.1	1,103.4	1,113.7	1,109.8	1,059.5	1,104.0	1,105.7	1,103.5	-2.2
Computer and electronic products <sup>1</sup> .....	1,113.6	1,108.9	1,113.9	1,112.9	1,110.5	1,111.6	1,109.2	1,108.6	-0.6
Computer and peripheral equipment.....	160.1	164.5	166.4	167.2	159.9	165.2	166.2	166.5	0.3
Communications equipment.....	115.0	108.8	109.3	110.2	115.1	109.5	108.9	110.2	1.3
Semiconductors and electronic components.....	386.5	387.3	389.6	387.4	385.2	388.4	387.4	385.7	-1.7
Electronic instruments.....	406.1	402.9	403.7	403.6	404.7	403.2	402.2	401.9	-0.3
Electrical equipment and appliances.....	370.2	373.1	375.4	375.1	368.1	373.8	374.0	372.9	-1.1
Transportation equipment <sup>1</sup> .....	1,366.3	1,450.5	1,464.1	1,462.5	1,387.2	1,452.9	1,461.4	1,481.9	20.5
Motor vehicles and parts <sup>2</sup> .....	699.3	769.2	778.7	769.7	721.7	769.6	776.7	789.5	12.8
Furniture and related products.....	360.4	351.9	352.2	352.1	357.3	349.9	348.8	348.9	0.1
Miscellaneous manufacturing.....	575.3	577.8	583.7	582.3	576.2	579.9	582.5	582.5	0.0
Nondurable goods.....	4,505	4,458	4,505	4,521	4,465	4,477	4,477	4,478	1
Food manufacturing.....	1,483.3	1,441.1	1,468.3	1,490.1	1,460.7	1,459.9	1,463.4	1,464.5	1.1
Beverages and tobacco products.....	195.0	197.4	202.1	204.2	189.7	198.1	197.5	198.4	0.9
Textile mills.....	122.1	120.2	120.1	119.1	122.2	119.5	119.3	119.3	0.0
Textile product mills.....	118.5	114.6	115.6	114.2	117.6	114.0	113.8	113.1	-0.7
Apparel.....	149.7	150.8	148.7	147.7	149.9	150.1	147.6	147.9	0.3
Leather and allied products.....	29.1	29.7	29.6	28.6	29.5	29.7	29.5	29.2	-0.3
Paper and paper products.....	393.0	391.5	394.6	392.4	391.0	392.4	392.3	390.5	-1.8
Printing and related support activities.....	469.2	457.9	458.7	455.9	468.3	457.7	456.0	454.6	-1.4
Petroleum and coal products.....	115.5	115.0	115.6	116.3	111.7	113.7	112.9	113.0	0.1
Chemicals.....	792.6	794.8	801.2	802.9	788.8	796.9	797.5	798.6	1.1
Plastics and rubber products.....	637.3	645.2	650.1	649.4	635.9	644.8	646.9	648.5	1.6
Private service-providing.....	91,845	93,048	93,556	93,507	91,303	92,765	92,825	92,973	148
Trade, transportation, and utilities.....	25,068	25,275	25,390	25,343	25,052	25,314	25,320	25,334	14
Wholesale trade.....	5,564.5	5,633.0	5,671.7	5,674.1	5,533.3	5,622.3	5,633.1	5,642.3	9.2
Durable goods.....	2,771.7	2,790.1	2,811.5	2,816.2	2,755.9	2,789.9	2,795.3	2,800.0	4.7
Nondurable goods.....	1,952.5	1,984.9	1,995.5	1,993.9	1,940.1	1,975.2	1,978.0	1,981.2	3.2
Electronic markets and agents and brokers.....	840.3	858.0	864.7	864.0	837.3	857.2	859.8	861.1	1.3
Retail trade.....	14,686.1	14,705.2	14,759.8	14,769.5	14,668.8	14,756.0	14,752.8	14,759.5	6.7
Motor vehicle and parts dealers <sup>1</sup> .....	1,712.3	1,723.9	1,735.2	1,731.4	1,692.4	1,715.8	1,716.6	1,712.2	-4.4
Automobile dealers.....	1,065.6	1,083.7	1,090.5	1,089.5	1,058.1	1,082.4	1,083.9	1,081.2	-2.7
Furniture and home furnishings stores.....	437.1	443.8	443.2	443.1	442.6	450.6	450.1	449.0	-1.1

See footnotes at end of table.

**ESTABLISHMENT DATA**

**Table B-1. Employees on nonfarm payrolls by industry sector and selected industry detail**

— Continued

[In thousands]

Industry	Not seasonally adjusted				Seasonally adjusted				Change from: June2012 - July2012 <sup>P</sup>
	July 2011	May 2012	June 2012 <sup>P</sup>	July 2012 <sup>P</sup>	July 2011	May 2012	June 2012 <sup>P</sup>	July 2012 <sup>P</sup>	
Retail trade - Continued									
Electronics and appliance stores.....	524.1	496.5	496.3	496.9	531.6	505.6	503.5	504.3	0.8
Building material and garden supply stores...	1,168.8	1,224.9	1,211.9	1,190.2	1,138.6	1,155.2	1,155.3	1,159.7	4.4
Food and beverage stores.....	2,852.1	2,874.0	2,898.8	2,905.1	2,830.5	2,873.6	2,876.5	2,882.7	6.2
Health and personal care stores.....	981.3	991.0	994.1	999.4	982.7	992.8	994.1	1,000.5	6.4
Gasoline stations.....	842.6	835.0	841.9	841.9	830.1	831.3	831.5	829.0	-2.5
Clothing and clothing accessories stores.....	1,339.9	1,328.3	1,346.7	1,356.0	1,346.9	1,368.6	1,368.8	1,367.6	-1.2
Sporting goods, hobby, book, and music stores.....	564.2	559.6	566.1	564.9	579.7	575.3	579.6	576.1	-3.5
General merchandise stores <sup>1</sup> .....	3,059.7	3,024.0	3,016.8	3,029.1	3,078.4	3,073.2	3,060.6	3,059.1	-1.5
Department stores.....	1,525.1	1,492.8	1,480.2	1,489.7	1,545.6	1,535.2	1,522.5	1,519.8	-2.7
Miscellaneous store retailers.....	783.8	781.0	781.9	784.8	781.8	777.4	776.6	779.8	3.2
Nonstore retailers.....	420.2	423.2	426.9	426.7	433.5	436.6	439.6	439.5	-0.1
Transportation and warehousing.....	4,258.5	4,373.4	4,391.0	4,339.7	4,295.0	4,373.2	4,369.8	4,376.7	6.9
Air transportation.....	462.1	458.4	462.0	461.9	459.4	458.2	458.8	459.0	0.2
Rail transportation.....	230.2	233.5	234.4	235.3	229.5	234.1	234.1	234.6	0.5
Water transportation.....	63.3	66.1	67.8	69.2	61.5	66.1	66.4	67.5	1.1
Truck transportation.....	1,320.8	1,336.9	1,361.4	1,363.4	1,303.8	1,340.7	1,343.3	1,346.4	3.1
Transit and ground passenger transportation.....	376.5	452.5	422.9	372.0	437.0	434.8	426.1	432.6	6.5
Pipeline transportation.....	43.3	43.7	44.2	43.9	42.9	43.8	44.0	43.6	-0.4
Scenic and sightseeing transportation.....	37.8	32.7	38.7	39.0	28.5	30.6	30.9	29.7	-1.2
Support activities for transportation.....	564.6	583.6	585.9	582.8	563.6	583.9	583.1	582.0	-1.1
Couriers and messengers.....	513.6	516.0	521.0	514.6	521.7	525.5	526.6	523.8	-2.8
Warehousing and storage.....	646.3	650.0	652.7	657.6	647.1	655.5	656.5	657.5	1.0
Utilities.....	558.6	563.4	567.2	559.3	555.3	562.8	563.8	555.7	-8.1
Information.....	2,668	2,642	2,648	2,654	2,665	2,636	2,635	2,646	11
Publishing industries, except Internet.....	752.2	735.3	739.0	742.0	749.4	739.1	738.3	739.1	0.8
Motion picture and sound recording industries.....	363.1	388.4	386.6	388.1	360.6	375.8	375.6	381.7	6.1
Broadcasting, except Internet.....	281.0	281.5	281.7	278.6	281.4	282.6	280.9	279.1	-1.8
Telecommunications.....	866.1	827.0	829.8	831.9	868.9	830.1	831.3	834.1	2.8
Data processing, hosting and related services.....	242.2	243.2	242.1	242.7	242.9	241.4	241.1	243.2	2.1
Other information services.....	163.3	167.0	169.0	170.2	161.4	167.2	167.3	168.4	1.1
Financial activities.....	7,741	7,726	7,788	7,806	7,676	7,734	7,737	7,738	1
Finance and insurance.....	5,771.2	5,763.4	5,792.5	5,800.8	5,749.9	5,772.4	5,775.7	5,777.3	1.6
Monetary authorities - central bank.....	19.2	18.8	19.0	19.4	19.0	18.9	19.0	19.2	0.2
Credit intermediation and related activities <sup>1</sup> .....	2,567.2	2,577.2	2,592.0	2,596.4	2,558.0	2,582.0	2,585.4	2,586.1	0.7
Depository credit intermediation <sup>1</sup> .....	1,750.1	1,745.9	1,750.5	1,754.3	1,740.9	1,747.9	1,746.6	1,745.5	-1.1
Commercial banking.....	1,322.7	1,317.8	1,319.2	1,321.7	1,315.8	1,319.8	1,317.0	1,315.6	-1.4
Securities, commodity contracts, investments.....	812.9	798.5	804.9	806.6	810.5	801.6	803.1	803.6	0.5
Insurance carriers and related activities.....	2,285.5	2,284.4	2,291.7	2,293.4	2,276.1	2,285.1	2,283.4	2,283.5	0.1
Funds, trusts, and other financial vehicles.....	86.4	84.5	84.9	85.0	86.3	84.8	84.8	84.9	0.1
Real estate and rental and leasing.....	1,969.5	1,962.9	1,995.5	2,005.0	1,926.2	1,961.1	1,961.4	1,961.1	-0.3
Real estate.....	1,427.9	1,421.0	1,440.7	1,449.1	1,404.1	1,420.9	1,423.4	1,424.4	1.0
Rental and leasing services.....	517.5	518.5	531.4	532.4	498.3	516.7	514.5	513.4	-1.1
Lessors of nonfinancial intangible assets.....	24.1	23.4	23.4	23.5	23.8	23.5	23.5	23.3	-0.2
Professional and business services.....	17,401	17,833	18,015	17,994	17,342	17,842	17,886	17,935	49
Professional and technical services <sup>1</sup> .....	7,688.8	7,851.5	7,909.7	7,927.5	7,715.7	7,922.2	7,937.3	7,955.2	17.9
Legal services.....	1,127.4	1,115.8	1,131.0	1,132.2	1,116.0	1,119.3	1,119.1	1,120.5	1.4
Accounting and bookkeeping services.....	855.7	904.3	884.1	876.3	928.8	958.9	952.7	953.2	0.5
Architectural and engineering services.....	1,313.5	1,322.3	1,338.8	1,343.5	1,294.3	1,323.6	1,323.6	1,323.8	0.2
Computer systems design and related services.....	1,539.9	1,584.9	1,597.4	1,609.7	1,535.8	1,589.7	1,598.2	1,605.2	7.0
Management and technical consulting services.....	1,078.7	1,123.9	1,137.3	1,146.1	1,076.2	1,129.2	1,136.4	1,142.7	6.3
Management of companies and enterprises.....	1,925.5	1,940.6	1,959.6	1,963.3	1,916.3	1,944.9	1,948.8	1,953.2	4.4
Administrative and waste services.....	7,787.0	8,041.0	8,145.9	8,102.8	7,709.6	7,975.2	7,999.7	8,026.8	27.1

See footnotes at end of table.

**ESTABLISHMENT DATA**

**Table B-1. Employees on nonfarm payrolls by industry sector and selected industry detail**

— Continued

[In thousands]

Industry	Not seasonally adjusted				Seasonally adjusted				Change from: June 2012 - July 2012 <sup>p</sup>
	July 2011	May 2012	June 2012 <sup>p</sup>	July 2012 <sup>p</sup>	July 2011	May 2012	June 2012 <sup>p</sup>	July 2012 <sup>p</sup>	
Administrative and waste services - Continued									
Administrative and support services <sup>1</sup> .....	7,414.0	7,670.0	7,767.1	7,721.5	7,344.8	7,603.8	7,626.7	7,654.0	27.3
Employment services <sup>1</sup> .....	2,895.6	3,166.9	3,210.9	3,166.9	2,935.3	3,164.0	3,186.2	3,208.0	21.8
Temporary help services .....	2,257.5	2,507.5	2,546.1	2,502.9	2,297.1	2,504.4	2,525.5	2,539.6	14.1
Business support services .....	797.0	806.9	807.0	805.2	811.9	816.4	817.7	820.1	2.4
Services to buildings and dwellings .....	1,891.0	1,860.7	1,896.8	1,896.8	1,774.9	1,786.8	1,782.0	1,782.3	0.3
Waste management and remediation services .....	373.0	371.0	378.8	381.3	364.8	371.4	373.0	372.8	-0.2
Education and health services .....	19,564	20,359	20,080	19,983	19,898	20,291	20,285	20,323	38
Educational services .....	2,941.8	3,373.4	3,098.3	3,029.2	3,239.3	3,326.2	3,311.0	3,329.2	18.2
Health care and social assistance .....	16,622.6	16,986.0	16,982.1	16,953.5	16,658.5	16,964.9	16,974.4	16,993.5	19.1
Health care <sup>3</sup> .....	14,088.3	14,324.3	14,371.2	14,385.8	14,062.0	14,337.5	14,348.8	14,360.8	12.0
Ambulatory health care services <sup>1</sup> .....	6,157.1	6,330.0	6,339.8	6,345.3	6,156.0	6,331.5	6,335.4	6,344.3	8.9
Offices of physicians .....	2,357.8	2,422.4	2,426.0	2,428.4	2,356.9	2,427.7	2,425.0	2,427.7	2.7
Outpatient care centers .....	620.4	656.7	660.3	663.7	621.3	656.4	660.0	664.1	4.1
Home health care services .....	1,140.0	1,188.4	1,190.4	1,190.1	1,140.7	1,185.9	1,189.6	1,191.4	1.8
Hospitals .....	4,747.1	4,801.7	4,820.9	4,832.6	4,731.2	4,810.5	4,812.3	4,817.6	5.3
Nursing and residential care facilities <sup>1</sup> .....	3,184.1	3,192.6	3,210.5	3,207.9	3,174.8	3,195.5	3,201.1	3,198.9	-2.2
Nursing care facilities .....	1,675.8	1,660.7	1,667.2	1,666.9	1,672.3	1,662.3	1,663.0	1,663.2	0.2
Social assistance <sup>1</sup> .....	2,534.3	2,661.7	2,610.9	2,567.7	2,596.5	2,627.4	2,625.6	2,632.7	7.1
Child day care services .....	780.2	864.8	807.9	769.2	843.1	838.6	829.6	833.3	3.7
Leisure and hospitality .....	13,997	13,829	14,197	14,280	13,332	13,583	13,593	13,620	27
Arts, entertainment, and recreation .....	2,220.8	1,982.8	2,161.6	2,209.6	1,916.2	1,911.3	1,911.4	1,907.6	-3.8
Performing arts and spectator sports .....	417.6	424.7	417.2	422.5	389.0	402.4	397.1	395.8	-1.3
Museums, historical sites, and similar institutions .....	147.7	137.2	147.4	147.6	132.1	132.5	133.6	132.7	-0.9
Amusements, gambling, and recreation .....	1,655.5	1,420.9	1,597.0	1,639.5	1,395.1	1,376.4	1,380.7	1,379.1	-1.6
Accommodation and food services .....	11,776.6	11,845.7	12,035.4	12,070.6	11,415.7	11,672.1	11,681.4	11,712.6	31.2
Accommodation .....	1,962.5	1,814.5	1,913.5	1,971.3	1,814.2	1,817.1	1,817.8	1,819.6	1.8
Food services and drinking places .....	9,814.1	10,031.2	10,121.9	10,099.3	9,601.5	9,855.0	9,863.6	9,893.0	29.4
Other services .....	5,406	5,384	5,438	5,447	5,338	5,365	5,369	5,377	8
Repair and maintenance .....	1,166.6	1,166.5	1,170.8	1,172.1	1,159.7	1,158.8	1,158.9	1,164.5	5.6
Personal and laundry services .....	1,296.8	1,303.8	1,312.1	1,305.9	1,288.2	1,291.1	1,295.4	1,296.7	1.3
Membership associations and organizations .....	2,942.7	2,914.0	2,954.7	2,969.1	2,889.9	2,915.3	2,914.8	2,915.6	0.8
Government .....	20,787	22,354	21,907	20,676	22,033	21,946	21,937	21,928	-9
Federal .....	2,881.0	2,818.0	2,829.0	2,840.0	2,851.0	2,817.0	2,815.0	2,813.0	-2.0
Federal, except U.S. Postal Service .....	2,243.5	2,205.6	2,218.6	2,226.8	2,219.2	2,203.0	2,202.3	2,203.4	1.1
U.S. Postal Service .....	637.3	612.2	610.8	613.1	631.9	614.4	613.1	609.9	-3.2
State government .....	4,759.0	5,093.0	4,833.0	4,755.0	5,054.0	5,059.0	5,059.0	5,053.0	-6.0
State government education .....	2,067.4	2,434.8	2,158.1	2,089.7	2,384.1	2,406.0	2,406.6	2,406.9	0.3
State government, excluding education .....	2,691.4	2,658.5	2,674.4	2,665.7	2,670.1	2,652.6	2,652.0	2,646.3	-5.7
Local government .....	13,147.0	14,443.0	14,245.0	13,081.0	14,128.0	14,070.0	14,063.0	14,062.0	-1.0
Local government education .....	6,660.2	8,200.9	7,803.8	6,578.2	7,862.5	7,813.1	7,792.4	7,785.4	-7.0
Local government, excluding education .....	6,486.5	6,242.1	6,441.6	6,502.9	6,265.9	6,257.2	6,270.6	6,277.0	6.4

1 Includes other industries, not shown separately.

2 Includes motor vehicles, motor vehicle bodies and trailers, and motor vehicle parts.

3 Includes ambulatory health care services, hospitals, and nursing and residential care facilities.

p Preliminary

**ESTABLISHMENT DATA**

**Table B-2. Average weekly hours and overtime of all employees on private nonfarm payrolls by industry sector, seasonally adjusted**

Industry	July 2011	May 2012	June 2012 <sup>p</sup>	July 2012 <sup>p</sup>
<b>AVERAGE WEEKLY HOURS</b>				
Total private.....	34.4	34.4	34.5	34.5
Goods-producing.....	39.9	40.1	40.2	40.2
Mining and logging.....	44.3	43.7	44.0	44.3
Construction.....	38.3	38.5	38.5	38.4
Manufacturing.....	40.4	40.6	40.7	40.7
Durable goods.....	40.7	40.9	41.0	41.0
Nondurable goods.....	39.8	40.0	40.1	40.2
Private service-providing.....	33.3	33.3	33.4	33.3
Trade, transportation, and utilities.....	34.6	34.5	34.6	34.6
Wholesale trade.....	38.7	38.7	38.7	38.6
Retail trade.....	31.6	31.6	31.7	31.6
Transportation and warehousing.....	38.6	38.2	38.2	38.3
Utilities.....	41.7	41.6	41.5	42.4
Information.....	36.7	36.5	36.5	36.5
Financial activities.....	37.4	37.2	37.2	37.2
Professional and business services.....	35.8	35.9	35.9	36.0
Education and health services.....	32.9	32.9	32.9	32.9
Leisure and hospitality.....	25.9	26.1	26.2	26.1
Other services.....	31.8	31.6	31.7	31.8
<b>AVERAGE OVERTIME HOURS</b>				
Manufacturing.....	3.1	3.3	3.2	3.2
Durable goods.....	3.1	3.3	3.2	3.2
Nondurable goods.....	3.2	3.2	3.3	3.2

p Preliminary

**ESTABLISHMENT DATA**

**Table B-3. Average hourly and weekly earnings of all employees on private nonfarm payrolls by industry sector, seasonally adjusted**

Industry	Average hourly earnings				Average weekly earnings			
	July 2011	May 2012	June 2012 <sup>p</sup>	July 2012 <sup>p</sup>	July 2011	May 2012	June 2012 <sup>p</sup>	July 2012 <sup>p</sup>
Total private.....	\$23.13	\$23.43	\$23.50	\$23.52	\$ 795.67	\$ 805.99	\$ 810.75	\$ 811.44
Goods-producing.....	24.44	24.65	24.73	24.76	975.16	988.47	994.15	995.35
Mining and logging.....	27.77	28.78	28.90	29.12	1,230.21	1,257.69	1,271.60	1,290.02
Construction.....	25.42	25.71	25.74	25.78	973.59	989.84	990.99	989.95
Manufacturing.....	23.75	23.88	23.97	23.99	959.50	969.53	975.58	976.39
Durable goods.....	25.29	25.25	25.34	25.37	1,029.30	1,032.73	1,038.94	1,040.17
Nondurable goods.....	21.18	21.54	21.62	21.63	842.96	861.60	866.96	869.53
Private service-providing.....	22.82	23.14	23.21	23.23	759.91	770.56	775.21	773.56
Trade, transportation, and utilities.....	20.11	20.40	20.48	20.50	695.81	703.80	708.61	709.30
Wholesale trade.....	26.44	26.73	26.81	26.78	1,023.23	1,034.45	1,037.55	1,033.71
Retail trade.....	15.95	16.19	16.32	16.31	504.02	511.60	517.34	515.40
Transportation and warehousing.....	21.69	22.02	21.97	21.99	837.23	841.16	839.25	842.22
Utilities.....	33.61	33.90	34.14	34.73	1,401.54	1,410.24	1,416.81	1,472.55
Information.....	31.47	31.73	31.74	31.81	1,154.95	1,158.15	1,158.51	1,161.07
Financial activities.....	27.86	29.03	29.12	29.23	1,041.96	1,079.92	1,083.26	1,087.36
Professional and business services.....	27.96	28.07	28.10	28.15	1,000.97	1,007.71	1,008.79	1,013.40
Education and health services.....	23.69	24.09	24.20	24.12	779.40	792.56	796.18	793.55
Leisure and hospitality.....	13.23	13.32	13.37	13.38	342.66	347.65	350.29	349.22
Other services.....	20.54	20.60	20.64	20.69	653.17	650.96	654.29	657.94

p Preliminary



**ESTABLISHMENT DATA**

**Table B-4. Indexes of aggregate weekly hours and payrolls for all employees on private nonfarm payrolls by industry sector, seasonally adjusted**

[2007=100]

Industry	Index of aggregate weekly hours <sup>1</sup>					Index of aggregate weekly payrolls <sup>2</sup>				
	July 2011	May 2012	June 2012 <sup>p</sup>	July 2012 <sup>p</sup>	Percent change from: June 2012 - July 2012 <sup>p</sup>	July 2011	May 2012	June 2012 <sup>p</sup>	July 2012 <sup>p</sup>	Percent change from: June 2012 - July 2012 <sup>p</sup>
Total private.....	94.3	95.7	96.1	96.2	0.1	104.0	107.0	107.7	107.9	0.2
Goods-producing.....	82.1	83.6	83.9	84.0	0.1	90.7	93.2	93.8	94.0	0.2
Mining and logging.....	110.7	115.6	116.3	117.1	0.7	123.4	133.6	134.9	136.9	1.5
Construction.....	72.7	73.1	73.2	73.0	-0.3	80.3	81.7	81.8	81.7	-0.1
Manufacturing.....	85.5	87.3	87.6	87.8	0.2	94.5	97.0	97.7	97.9	0.2
Durable goods.....	83.7	86.1	86.4	86.7	0.3	94.0	96.6	97.3	97.7	0.4
Nondurable goods.....	88.7	89.4	89.6	89.9	0.3	95.3	97.7	98.3	98.6	0.3
Private service-providing.....	97.6	99.2	99.6	99.4	-0.2	108.0	111.2	112.0	111.9	-0.1
Trade, transportation, and utilities.....	94.3	95.0	95.3	95.3	0.0	102.0	104.3	105.0	105.2	0.2
Wholesale trade.....	93.4	94.9	95.1	95.0	-0.1	103.1	105.9	106.4	106.2	-0.2
Retail trade.....	94.2	94.7	95.0	94.7	-0.3	99.3	101.4	102.5	102.2	-0.3
Transportation and warehousing.....	94.9	95.6	95.5	95.9	0.4	104.4	106.8	106.5	107.1	0.6
Utilities.....	100.2	101.3	101.2	101.9	0.7	111.3	113.5	114.2	117.0	2.5
Information.....	89.3	87.9	87.8	88.2	0.5	100.1	99.3	99.3	99.9	0.6
Financial activities.....	94.6	94.8	94.8	94.9	0.1	102.9	107.4	107.8	108.2	0.4
Professional and business services.....	97.6	100.7	101.0	101.5	0.5	110.6	114.6	115.0	115.8	0.7
Education and health services.....	106.6	108.7	108.6	108.9	0.3	118.3	122.6	123.2	123.0	-0.2
Leisure and hospitality.....	98.5	101.2	101.6	101.4	-0.2	105.2	108.7	109.6	109.5	-0.1
Other services.....	94.1	93.9	94.3	94.7	0.4	109.6	109.8	110.5	111.2	0.6

1 The indexes of aggregate weekly hours are calculated by dividing the current month's estimates of aggregate hours by the corresponding 2007 annual average aggregate hours. Aggregate hours estimates are the product of estimates of average weekly hours and employment.

2 The indexes of aggregate weekly payrolls are calculated by dividing the current month's estimates of aggregate weekly payrolls by the corresponding 2007 annual average aggregate weekly payrolls. Aggregate payrolls estimates are the product of estimates of average hourly earnings, average weekly hours, and employment.

p Preliminary

**ESTABLISHMENT DATA**

**Table B-5. Employment of women on nonfarm payrolls by industry sector, seasonally adjusted**

Industry	Women employees (in thousands)				Percent of all employees			
	July 2011	May 2012	June 2012 <sup>P</sup>	July 2012 <sup>P</sup>	July 2011	May 2012	June 2012 <sup>P</sup>	July 2012 <sup>P</sup>
Total nonfarm.....	64,979	65,629	65,635	65,721	49.4	49.3	49.3	49.3
Total private.....	52,385	53,099	53,132	53,215	47.9	47.8	47.8	47.8
Goods-producing.....	4,059	4,085	4,096	4,100	22.5	22.3	22.4	22.4
Mining and logging.....	105	112	114	114	13.2	13.3	13.6	13.6
Construction.....	707	706	710	714	12.8	12.8	12.9	13.0
Manufacturing.....	3,247	3,267	3,272	3,272	27.6	27.3	27.3	27.3
Durable goods.....	1,719	1,734	1,736	1,737	23.5	23.2	23.2	23.1
Nondurable goods.....	1,528	1,533	1,536	1,535	34.2	34.2	34.3	34.3
Private service-providing.....	48,326	49,014	49,036	49,115	52.9	52.8	52.8	52.8
Trade, transportation, and utilities.....	10,033	10,052	10,051	10,053	40.0	39.7	39.7	39.7
Wholesale trade.....	1,665.4	1,689.6	1,696.2	1,697.5	30.1	30.1	30.1	30.1
Retail trade.....	7,222.6	7,209.9	7,205.8	7,202.7	49.2	48.9	48.8	48.8
Transportation and warehousing.....	1,009.5	1,012.7	1,009.0	1,014.3	23.5	23.2	23.1	23.2
Utilities.....	135.4	139.5	139.7	138.3	24.4	24.8	24.8	24.9
Information.....	1,083	1,065	1,068	1,070	40.6	40.4	40.5	40.4
Financial activities.....	4,484	4,480	4,484	4,480	58.4	57.9	58.0	57.9
Professional and business services.....	7,691	7,909	7,928	7,965	44.3	44.3	44.3	44.4
Education and health services.....	15,281	15,566	15,559	15,594	76.8	76.7	76.7	76.7
Leisure and hospitality.....	6,940	7,108	7,114	7,120	52.1	52.3	52.3	52.3
Other services.....	2,814	2,834	2,832	2,833	52.7	52.8	52.7	52.7
Government.....	12,594	12,530	12,503	12,506	57.2	57.1	57.0	57.0

p Preliminary

NOTE: Data in this table have been corrected. For more information see [http://www.bls.gov/bls/ceswomen\\_usps\\_correction.htm](http://www.bls.gov/bls/ceswomen_usps_correction.htm).

**ESTABLISHMENT DATA**

**Table B-6. Employment of production and nonsupervisory employees on private nonfarm payrolls by industry sector, seasonally adjusted<sup>1</sup>**

[In thousands]

Industry	July 2011	May 2012	June 2012 <sup>p</sup>	July 2012 <sup>p</sup>
Total private.....	90,173	91,755	91,801	91,938
Goods-producing.....	13,021	13,204	13,195	13,216
Mining and logging.....	597	638	635	630
Construction.....	4,165	4,142	4,135	4,132
Manufacturing.....	8,259	8,424	8,425	8,454
Durable goods.....	5,007	5,161	5,162	5,192
Nondurable goods.....	3,252	3,263	3,263	3,262
Private service-providing.....	77,152	78,551	78,606	78,722
Trade, transportation, and utilities.....	21,218	21,493	21,487	21,489
Wholesale trade.....	4,433.5	4,525.0	4,529.0	4,540.1
Retail trade.....	12,641.6	12,737.5	12,731.4	12,721.7
Transportation and warehousing.....	3,698.9	3,783.4	3,777.9	3,787.1
Utilities.....	443.6	447.0	448.6	440.5
Information.....	2,140	2,129	2,132	2,143
Financial activities.....	5,881	5,939	5,948	5,953
Professional and business services.....	14,267	14,726	14,773	14,824
Education and health services.....	17,433	17,796	17,792	17,823
Leisure and hospitality.....	11,745	11,983	11,982	11,990
Other services.....	4,468	4,485	4,492	4,500

<sup>1</sup> Data relate to production employees in mining and logging and manufacturing, construction employees in construction, and nonsupervisory employees in the service-providing industries. These groups account for approximately four-fifths of the total employment on private nonfarm payrolls.

<sup>p</sup> Preliminary

**ESTABLISHMENT DATA**

**Table B-7. Average weekly hours and overtime of production and nonsupervisory employees on private nonfarm payrolls by industry sector, seasonally adjusted<sup>1</sup>**

Industry	July 2011	May 2012	June 2012 <sup>p</sup>	July 2012 <sup>p</sup>
<b>AVERAGE WEEKLY HOURS</b>				
Total private.....	33.7	33.7	33.7	33.7
Goods-producing.....	40.9	41.0	41.1	41.1
Mining and logging.....	46.4	46.3	46.7	47.2
Construction.....	39.1	39.0	39.0	39.0
Manufacturing.....	41.4	41.6	41.7	41.7
Durable goods.....	41.8	42.0	42.1	42.1
Nondurable goods.....	40.9	40.9	41.0	41.0
Private service-providing.....	32.5	32.4	32.5	32.5
Trade, transportation, and utilities.....	33.7	33.7	33.8	33.8
Wholesale trade.....	38.5	38.6	38.7	38.6
Retail trade.....	30.6	30.5	30.5	30.5
Transportation and warehousing.....	37.8	37.9	38.0	38.0
Utilities.....	41.9	41.2	40.9	41.9
Information.....	36.4	35.8	35.9	35.8
Financial activities.....	36.5	36.6	36.8	36.7
Professional and business services.....	35.2	35.2	35.2	35.3
Education and health services.....	32.4	32.3	32.4	32.2
Leisure and hospitality.....	24.8	25.0	25.0	25.0
Other services.....	30.7	30.5	30.6	30.6
<b>AVERAGE OVERTIME HOURS</b>				
Manufacturing.....	4.1	4.1	4.2	4.1
Durable goods.....	4.2	4.3	4.4	4.2
Nondurable goods.....	4.0	3.9	3.9	3.9

<sup>1</sup> Data relate to production employees in mining and logging and manufacturing, construction employees in construction, and nonsupervisory employees in the service-providing industries. These groups account for approximately four-fifths of the total employment on private nonfarm payrolls.

<sup>p</sup> Preliminary

**ESTABLISHMENT DATA**

**Table B-8. Average hourly and weekly earnings of production and nonsupervisory employees on private nonfarm payrolls by industry sector, seasonally adjusted<sup>1</sup>**

Industry	Average hourly earnings				Average weekly earnings			
	July 2011	May 2012	June 2012 <sup>p</sup>	July 2012 <sup>p</sup>	July 2011	May 2012	June 2012 <sup>p</sup>	July 2012 <sup>p</sup>
Total private.....	\$19.52	\$19.70	\$19.75	\$19.77	\$ 657.82	\$ 663.89	\$ 665.58	\$ 666.25
Goods-producing.....	20.68	20.89	20.94	20.98	845.81	856.49	860.63	862.28
Mining and logging.....	24.62	25.78	25.91	26.00	1,142.37	1,193.61	1,210.00	1,227.20
Construction.....	23.65	23.93	23.95	24.02	924.72	933.27	934.05	936.78
Manufacturing.....	18.95	19.07	19.14	19.17	784.53	793.31	798.14	799.39
Durable goods.....	20.12	20.16	20.25	20.24	841.02	846.72	852.53	852.10
Nondurable goods.....	17.10	17.31	17.35	17.41	699.39	707.98	711.35	713.81
Private service-providing.....	19.28	19.45	19.50	19.51	626.60	630.18	633.75	634.08
Trade, transportation, and utilities.....	17.22	17.41	17.48	17.46	580.31	586.72	590.82	590.15
Wholesale trade.....	22.14	22.14	22.22	22.24	852.39	854.60	859.91	858.46
Retail trade.....	13.54	13.83	13.89	13.84	414.32	421.82	423.65	422.12
Transportation and warehousing.....	19.55	19.56	19.57	19.55	738.99	741.32	743.66	742.90
Utilities.....	30.94	31.51	31.70	32.00	1,296.39	1,298.21	1,296.53	1,340.80
Information.....	26.55	26.77	26.79	26.92	966.42	958.37	961.76	963.74
Financial activities.....	21.87	22.59	22.65	22.70	798.26	826.79	833.52	833.09
Professional and business services.....	23.24	23.22	23.23	23.24	818.05	817.34	817.70	820.37
Education and health services.....	20.86	21.01	21.09	21.07	675.86	678.62	683.32	678.45
Leisure and hospitality.....	11.49	11.61	11.64	11.65	284.95	290.25	291.00	291.25
Other services.....	17.36	17.42	17.45	17.49	532.95	531.31	533.97	535.19

<sup>1</sup> Data relate to production employees in mining and logging and manufacturing, construction employees in construction, and nonsupervisory employees in the service-providing industries. These groups account for approximately four-fifths of the total employment on private nonfarm payrolls.

p Preliminary

**ESTABLISHMENT DATA**

**Table B-9. Indexes of aggregate weekly hours and payrolls for production and nonsupervisory employees on private nonfarm payrolls by industry sector, seasonally adjusted<sup>1</sup>**

[2002=100]

Industry	Index of aggregate weekly hours <sup>2</sup>					Index of aggregate weekly payrolls <sup>3</sup>				
	July 2011	May 2012	June 2012 <sup>p</sup>	July 2012 <sup>p</sup>	Percent change from: June 2012 - July 2012 <sup>p</sup>	July 2011	May 2012	June 2012 <sup>p</sup>	July 2012 <sup>p</sup>	Percent change from: June 2012 - July 2012 <sup>p</sup>
Total private.....	101.5	103.3	103.4	103.5	0.1	132.4	136.0	136.4	136.7	0.2
Goods-producing.....	81.4	82.7	82.9	83.0	0.1	103.1	105.8	106.3	106.6	0.3
Mining and logging.....	147.2	157.0	157.6	158.0	0.3	210.8	235.4	237.5	238.9	0.6
Construction.....	81.5	80.9	80.7	80.7	0.0	104.1	104.5	104.4	104.7	0.3
Manufacturing.....	78.5	80.4	80.6	80.9	0.4	97.3	100.3	100.9	101.5	0.6
Durable goods.....	78.7	81.5	81.7	82.2	0.6	98.8	102.5	103.3	103.8	0.5
Nondurable goods.....	78.4	78.6	78.8	78.8	0.0	94.7	96.2	96.6	96.9	0.3
Private service-providing.....	107.2	108.8	109.2	109.4	0.2	141.7	145.1	146.0	146.3	0.2
Trade, transportation, and utilities.....	99.7	101.0	101.2	101.3	0.1	122.5	125.4	126.2	126.1	-0.1
Wholesale trade.....	100.5	102.9	103.2	103.2	0.0	131.1	134.2	135.1	135.2	0.1
Retail trade.....	97.9	98.3	98.3	98.2	-0.1	113.6	116.6	117.0	116.5	-0.4
Transportation and warehousing.....	105.2	107.9	108.1	108.3	0.2	130.5	133.9	134.2	134.3	0.1
Utilities.....	95.1	94.2	93.8	94.4	0.6	122.8	123.9	124.2	126.1	1.5
Information.....	88.9	87.0	87.4	87.6	0.2	116.9	115.3	115.9	116.7	0.7
Financial activities.....	102.7	104.0	104.7	104.6	-0.1	138.9	145.3	146.7	146.7	0.0
Professional and business services.....	112.6	116.2	116.5	117.3	0.7	155.7	160.5	161.1	162.2	0.7
Education and health services.....	121.8	124.0	124.4	123.8	-0.5	167.1	171.3	172.4	171.5	-0.5
Leisure and hospitality.....	106.7	109.7	109.7	109.8	0.1	139.2	144.7	145.0	145.3	0.2
Other services.....	96.2	95.9	96.4	96.6	0.2	121.7	121.8	122.6	123.1	0.4

1 Data relate to production employees in mining and logging and manufacturing, construction employees in construction, and nonsupervisory employees in the service-providing industries. These groups account for approximately four-fifths of the total employment on private nonfarm payrolls.

2 The indexes of aggregate weekly hours are calculated by dividing the current month's estimates of aggregate hours by the corresponding 2002 annual average aggregate hours. Aggregate hours estimates are the product of estimates of average weekly hours and employment.

3 The indexes of aggregate weekly payrolls are calculated by dividing the current month's estimates of aggregate weekly payrolls by the corresponding 2002 annual average aggregate weekly payrolls. Aggregate payrolls estimates are the product of estimates of average hourly earnings, average weekly hours, and employment.

p Preliminary