

MIDWEST INFORMATION OFFICE  
Chicago, Ill.

For release: 7:30 a.m. CT, Friday, September 14, 2012

12-1855-CHI

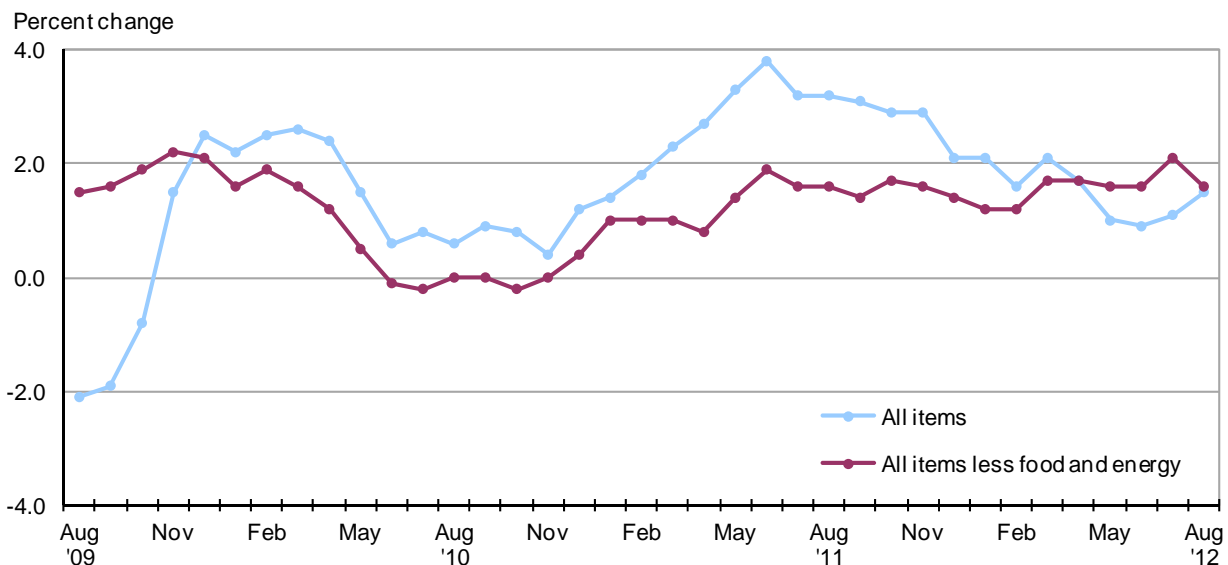
Technical information: (312) 353-1880 • BLSInfoChicago@bls.gov • www.bls.gov/ro5  
Media contact: (312) 353-1138

**CONSUMER PRICE INDEX, CHICAGO-GARY-KENOSHA,  
ILL.-IND.-WIS., CMSA – AUGUST 2012**

The Consumer Price Index for All Urban Consumers (CPI-U) in the Chicago-Gary-Kenosha area was up 0.6 percent in August, the U.S. Bureau of Labor Statistics reported today. Regional Commissioner Charlene Peiffer noted that energy prices rose 7.8 percent while food prices were down 0.3 percent. The all items less food and energy category was unchanged over the month. Among the indexes within the all items less food and energy category, prices were higher for apparel and lower for new and used motor vehicles and for household furnishings and operations. (Data in this report are not seasonally adjusted. Accordingly, month-to-month changes may reflect the impact of seasonal influences.)

Over the last 12 months, the Chicago area all items CPI-U increased 1.5 percent. The energy index declined 1.2 percent since last August, primarily due to falling prices for utility (piped) gas service and electricity. The all items less food and energy index was 1.6 percent higher over the year.

**Chart 1. Over-the-year percent change in CPI-U, Chicago-Gary-Kenosha, August 2009–August 2012**



Source: U.S. Bureau of Labor Statistics

## Food

Food prices were down 0.3 percent in August after remaining unchanged in July. Of the two components within the food index, food at home prices (groceries) were 0.6 percent lower and food away from home prices (restaurant, cafeteria, and vending purchases) increased 0.2 percent over the month. Within the food at home group, prices were higher for eggs and apples. Prices were lower for snacks, canned fruits and vegetables, and bread.

From August 2011 to August 2012, the food index increased 2.2 percent. In the previous 12-month period ended August 2011, food prices in the Chicago area were up 3.8 percent.

## Energy

The energy index rose 7.8 percent in August following a 2.9-percent decline in July. Within the energy category, prices for gasoline and utility (piped) gas service increased 11.5 percent and 5.8 percent, respectively. Electricity prices were unchanged over the month.

Over the year, costs for utility (piped) gas service decreased 12.6 percent and prices for electricity were down 9.1 percent. The index for gasoline was up 5.4 percent. Overall energy prices declined 1.2 percent for the 12 months ended in August 2012.

## All items less food and energy

The index for all items less food and energy was unchanged in August. Among the index's components, prices were higher for apparel (2.4 percent) in contrast to lower prices for new and used motor vehicles and for household furnishings and operations (-1.4 percent).

Over the year, the index for all items less food and energy increased 1.6 percent. Shelter was the largest contributor, rising 1.7 percent from August 2011 to August 2012. Medical care costs (3.9 percent), recreation costs (3.2 percent), and prices for other goods and services (5.0 percent) also rose since last August.

**The September 2012 Consumer Price Index for Chicago is scheduled to be released on October 16, 2012, at 7:30 a.m. (CT).**

**Table A. Percent Changes in the CPI-U, Chicago-Gary-Kenosha, Ill.-Ind.-Wis. (not seasonally adjusted)**

Expenditure Category	Percent changes from preceding month							12 mo. ended Aug. '12
	2012							
	Feb.	Mar.	Apr.	May	June	July	Aug.	Aug. '12
All items	0.0	1.2	0.0	-0.1	-0.1	-0.2	0.6	1.5
Food & beverages	-6	.2	.5	.3	.5	.1	-3	2.1
Food	-7	.2	.6	.2	.5	.0	-3	2.2
Housing	-2	.3	-5	-1	.6	-2	.1	.5
Apparel	3.1	3.2	-2.4	.3	-1.2	-2.1	2.4	.6
Transportation	.3	4.5	1.4	-7	-2.0	-1.6	3.2	2.0
Medical care	.5	.5	-1	.1	.2	.8	.0	3.9
Recreation	.1	2.7	-3	.6	.2	-2	-4	3.2
Education & communication	.2	-1	.2	-2	-3	.0	.3	.0
Other goods & services	-4	1.1	-4	.2	.8	3.8	.1	5.0
Special Indexes								
Energy	-1.5	8.5	.5	-2.6	-3.3	-2.9	7.8	-1.2
All items less food & energy	.3	.6	-1	.2	.2	.0	.0	1.6

## Technical Note

The Consumer Price Index (CPI) is a measure of the average change in prices over time in a fixed market basket of goods and services. The Bureau of Labor Statistics publishes CPIs for two population groups: (1) a CPI for All Urban Consumers (CPI-U) which covers approximately 88 percent of the total population and (2) a CPI for Urban Wage Earners and Clerical Workers (CPI-W) which covers 29 percent of the total population. The CPI-U includes, in addition to wage earners and clerical workers, groups such as professional, managerial, and technical workers, the self-employed, short-term workers, the unemployed, and retirees and others not in the labor force.

The CPI is based on prices of food, clothing, shelter, and fuels, transportation fares, charges for doctors' and dentists' services, drugs, and the other goods and services that people buy for day-to-day living. Each month, prices are collected in 87 urban areas across the country from about 4,000 housing units and approximately 26,000 retail establishments--department stores, supermarkets, hospitals, filling stations, and other types of stores and service establishments. All taxes directly associated with the purchase and use of items are included in the index.

The index measures price changes from a designated reference date (1982-84) that equals 100.0. An increase of 16.5 percent, for example, is shown as 116.5. This change can also be expressed in dollars as follows: the price of a base period "market basket" of goods and services in the CPI has risen from \$10 in 1982-84 to \$11.65. For further details see the CPI home page on the Internet at [www.bls.gov/cpi](http://www.bls.gov/cpi) and the BLS Handbook of Methods, Chapter 17 The Consumer Price Index, available on the Internet at [www.bls.gov/opub/hom/homch17\\_a.htm](http://www.bls.gov/opub/hom/homch17_a.htm).

In calculating the index, price changes for the various items in each location are averaged together with weights that represent their importance in the spending of the appropriate population group. Local data are then combined to obtain a U.S. city average. Because the sample size of a local area is smaller, the local area index is subject to substantially more sampling and other measurement error than the national index. In addition, local indexes are not adjusted for seasonal influences. As a result, local area indexes show greater volatility than the national index, although their long-term trends are quite similar. **NOTE: Area indexes do not measure differences in the level of prices between cities; they only measure the average change in prices for each area since the base period.**

The Chicago-Gary-Kenosha, Ill.-Ind.-Wis. consolidated area covered in this release is comprised of Cook, DeKalb, DuPage, Grundy, Kane, Kankakee, Kendall, Lake, McHenry, and Will Counties in Illinois; Lake and Porter Counties in Indiana; and Kenosha County in Wisconsin.

Information in this release will be made available to sensory impaired individuals upon request. Voice phone: 202-691-5200; TDD message referral phone number: 1-800-877-8339.

Consumer Price Index for All Urban Consumers (CPI-U): Indexes and percent changes for selected periods

Chicago-Gary-Kenosha, IL-IN-WI (1982-84=100 unless otherwise noted)

Item and Group	Indexes			Percent change from—		
	June 2012	July 2012	Aug. 2012	Aug. 2011	June 2012	July 2012
<b>Expenditure category</b>						
All items .....	222.138	221.611	222.967	1.5	0.4	0.6
All items (1967=100) .....	663.655	662.082	666.133	-	-	-
Food and beverages .....	229.255	229.409	228.742	2.1	-.2	-.3
Food .....	228.482	228.590	227.851	2.2	-.3	-.3
Food at home .....	230.917	229.765	228.358	.7	-1.1	-.6
Food away from home .....	219.074	221.270	221.655	4.5	1.2	.2
Alcoholic beverages .....	237.169	238.176	238.881	.5	.7	.3
Housing .....	218.166	217.827	218.018	.5	-.1	.1
Shelter .....	270.507	270.387	270.458	1.7	.0	.0
Rent of primary residence <sup>1</sup> .....	280.625	280.823	281.457	1.8	.3	.2
Owners' equivalent rent of residences <sup>1 2</sup> .....	275.036	275.140	275.322	1.7	.1	.1
Owners' equivalent rent of primary residence <sup>1 2</sup> .....	275.036	275.140	275.322	1.7	.1	.1
Fuels and utilities .....	171.364	170.253	173.305	-6.4	1.1	1.8
Household energy .....	143.681	141.997	145.322	-10.6	1.1	2.3
Energy services <sup>1</sup> .....	146.141	144.513	147.886	-10.8	1.2	2.3
Electricity <sup>1</sup> .....	150.320	144.410	144.410	-9.1	-3.9	.0
Utility (piped) gas service <sup>1</sup> .....	127.333	131.653	139.292	-12.6	9.4	5.8
Household furnishings and operations .....	100.586	100.066	98.648	-1.4	-1.9	-1.4
Apparel .....	93.197	91.207	93.353	.6	.2	2.4
Transportation .....	205.518	202.248	208.736	2.0	1.6	3.2
Private transportation .....	202.408	199.621	206.632	2.2	2.1	3.5
Motor fuel .....	336.869	323.704	360.599	5.4	7.0	11.4
Gasoline (all types) .....	334.259	321.133	358.166	5.4	7.2	11.5
Gasoline, unleaded regular <sup>3</sup> .....	330.572	317.734	353.509	5.1	6.9	11.3
Gasoline, unleaded midgrade <sup>3 4</sup> .....	346.971	332.452	372.706	5.9	7.4	12.1
Gasoline, unleaded premium <sup>3</sup> .....	315.360	303.061	340.637	6.0	8.0	12.4
Medical care .....	431.229	434.653	434.702	3.9	.8	.0
Recreation <sup>5</sup> .....	110.813	110.635	110.182	3.2	-.6	-.4
Education and communication <sup>5</sup> .....	137.215	137.253	137.638	.0	.3	.3
Other goods and services .....	357.835	371.512	371.834	5.0	3.9	.1
<b>Commodity and service group</b>						
All items .....	222.138	221.611	222.967	1.5	.4	.6
Commodities .....	174.265	173.250	175.612	1.4	.8	1.4
Commodities less food and beverages .....	144.401	142.966	146.429	1.0	1.4	2.4
Nondurables less food and beverages .....	192.457	190.323	199.156	3.0	3.5	4.6
Durables .....	98.485	97.688	96.591	-2.1	-1.9	-1.1
Services .....	267.307	267.266	267.618	1.6	.1	.1
<b>Special aggregate indexes</b>						
All items less medical care .....	213.128	212.460	213.856	1.3	.3	.7
All items less shelter .....	206.186	205.505	207.345	1.4	.6	.9
Commodities less food .....	148.272	146.866	150.322	1.0	1.4	2.4
Nondurables .....	212.693	211.602	216.101	2.4	1.6	2.1
Nondurables less food .....	196.271	194.249	202.826	3.0	3.3	4.4
Services less rent of shelter <sup>2</sup> .....	277.956	278.006	278.702	1.4	.3	.3
Services less medical care services .....	254.815	254.617	254.955	1.3	.1	.1
Energy .....	219.045	212.794	229.493	-1.2	4.8	7.8
All items less energy .....	224.078	224.130	223.935	1.7	-.1	-.1
All items less food and energy .....	224.084	224.126	224.030	1.6	.0	.0

<sup>1</sup> This index series was calculated using a Laspeyres estimator. All other item stratum index series were calculated using a geometric means estimator.

<sup>2</sup> Index is on a December 1982=100 base.

<sup>3</sup> Special index based on a substantially smaller sample.

<sup>4</sup> Indexes on a December 1993=100 base.

<sup>5</sup> Indexes on a December 1997=100 base.

- Data not available.

NOTE: Index applies to a month as a whole, not to any specific date.