



---

# Base Realignment and Closure

May 10, 2005



---

# Process and Timeline



# Background

---

- Four previous base realignment and closure rounds (1988, 1991, 1993, 1995)
  - 97 major closures / 55 major realignments / 235 minor actions
  - Net savings of ~\$18 billion through FY 2001
  - Annual recurring savings of ~\$7 billion beyond FY 2001
- March 2004 BRAC Report estimates 24 percent excess
- The Department requested 2003 and 2005 BRAC rounds in FY 02: Congress authorized a single round in 2005
- Integrated Global Presence and Basing Strategy



# Scorecard for BRACs 88-95

## Major and Minor Closures and Realignment

	<u>Major Base Closures</u>	<u>Major Base Realignments</u>	<u>Minor Closures and Realignments</u>
BRAC 88	16	4	23
BRAC 91	26	17	32
BRAC 93	28	12	123
BRAC 95	<u>27</u>	<u>22</u>	<u>57</u>
Total	97	55	235

## Costs and Savings

(TY \$ Billions)	<u>Costs</u> <sup>1</sup>	<u>Savings</u> <sup>1</sup>	<u>Annual Recurring Savings</u> <sup>2</sup>
BRAC 88	2.7	6.8	0.9
BRAC 91	5.2	13.6	2.0
BRAC 93	7.6	13.0	2.6
BRAC 95	<u>6.5</u>	<u>6.2</u>	<u>1.7</u>
Total	22.0	39.6	7.3 <sup>3</sup>

1. As of the FY 2006 President's Budget (February 2005) through FY 2001.
2. Annual recurring savings (ARS) begin in the year following each round's 6-year implementation period: FY96 for BRAC 88; FY98 for BRAC 91; FY00 for BRAC 93; and FY02 for BRAC 95. These numbers reflect the ARS for each round starting in 2002 and are expressed in FY 05 dollars.
3. Does not add due to rounding.



# Key Imperatives

---

## ■ Further Transformation

- Rationalize infrastructure to force structure
- Adjust footprint to maximize capability and efficiency

## ■ Maximize Joint Utilization

- Reduce overhead
- Improve efficiency
- Facilitate joint training and operations

## ■ Convert Waste to Warfighting

- Unnecessary capacity diverts DoD resources



# Process Timeline

**SecDef initiates BRAC 05 Process (establish organization, process, and initial policy (Nov 02))**

**Selection Criteria Published (Feb 04)**

**SecDef BRAC Report and Certifications (Delivered March 23, 2004)**

**Commissioner Nominations (15 Mar 05)**

**Threat Assessment/Revised Force Structure Plan (15 Mar 05)**

**SecDef Approves and Forwards Recommendations for  
Realignments and Closures to Commission (May 16, 2005)**

**Commission Process (May 05 - Sep 05)**

**Presidential Review and Approval (Sep 05)**

**Congressional Action (Sep 05 + 45 Legislative Days)**

**NOV 02**

**~DEC 05**



# Basic Process

---

- SecDef develops recommendations and sends to an independent Commission
- Commission reviews and forwards its recommendations to the President
- President approves (or disapproves) and sends recommendations to Congress
- Congress has an opportunity to reject (President could veto) or recommendations have force and effect of law

“All or nothing provision” binds President and Congress



# Commission Review

---

- Review for conformity with force structure plan and selection criteria
  - Public hearings, site visits, and analysis
  - Joint Cross-Service Group and Military Department testimony
  
- Must find SecDef “deviated substantially” from force structure plan or selection criteria to reject, change, or add new recommendations
  
- Can only add a closure to SecDef list if seven of nine agree and if at least two visit the installation





# The President and Congress

---

- President must approve or disapprove Commission's recommendations on an all or none basis by Sept 23, 2005
  - If disapproved, Commission revised report due to President by Oct 20, 2005
  - President has until Nov 2005 to approve revised report and send to Congress
  
- Congress has 45-days or the adjournment sine die for the session to enact a joint resolution disapproving President's recommendations on an all or none basis, or the recommendations become binding



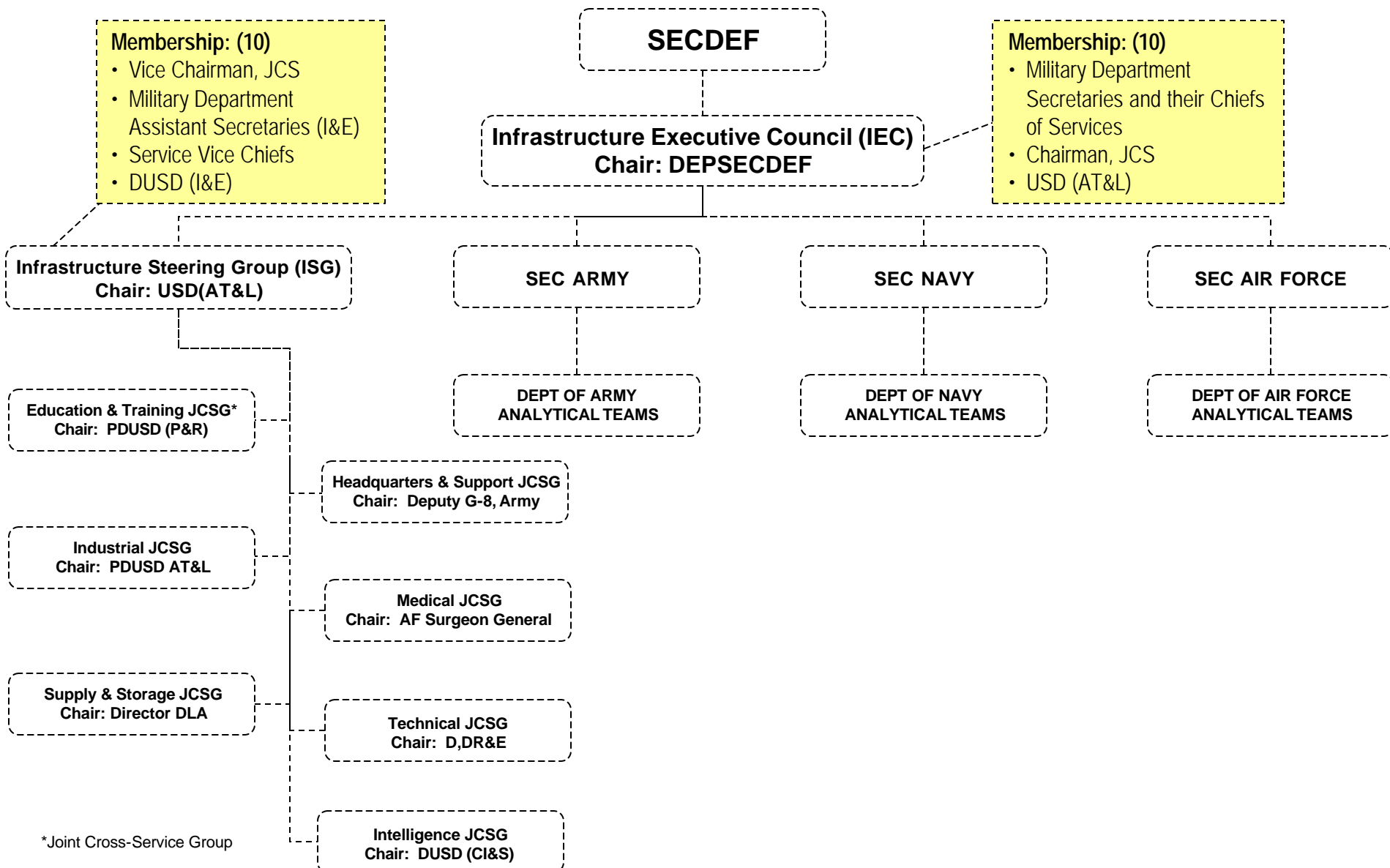
# SecDef's Kickoff Memo: Analytical Construct—Two Categories

---

- Service-Unique Functions
  - Analyzed by each Military Department
  
- Common Business Oriented Support Functions
  - Analyzed by Joint Cross Service Groups that include representatives from each Service



# BRAC 2005 Leadership





# Functional Groups

---

- ISG established seven broad functional categories to receive cross-service analysis:
  - Education & Training
  - Headquarters and Support Activities
  - Industrial
  - Intelligence
  - Medical
  - Supply & Storage
  - Technical



# Selection Criteria

---

- Draft criteria published in Federal Register:  
Dec 23, 2003
- Public comment period ended: Jan 30, 2004
- Final criteria published: Feb 12, 2004
- Congressional consideration period ended:  
Mar 15, 2004

Criteria provide a broad analytical framework governing the process and are implemented through more detailed guidance—

**military value primary consideration**



# Final Selection Criteria

---

## Military Value

1. The current and future mission capabilities and the impact on operational readiness of the Department of Defense's total force, including the impact on joint warfighting, training, and readiness.
2. The availability and condition of land, facilities and associated airspace (including training areas suitable for maneuver by ground, naval, or air forces throughout a diversity of climate and terrain areas and staging areas for the use of the Armed Forces in homeland defense missions) at both existing and potential receiving locations.
3. The ability to accommodate contingency, mobilization, surge, and future total force requirements at both existing and potential receiving locations to support operations and training.
4. The cost of operations and the manpower implications.



# Final Selection Criteria

---

## Other Considerations

5. The extent and timing of potential costs and savings, including the number of years, beginning with the date of completion of the closure or realignment, for the savings to exceed the costs.
6. The economic impact on existing communities in the vicinity of military installations.
7. The ability of both the existing and potential receiving communities' infrastructure to support forces, missions, and personnel.
8. The environmental impact, including the impact of costs related to potential environmental restoration, waste management, and environmental compliance activities.



# BRAC Commission Schedule

May 3, 2005	9:30 a.m. Swearing-in of Commissioners, testimony by Commission Staff, General Accountability Office and Congressional Research Service 1:30 p.m. Current and Long Term Threat Confronting US National Security	Completed
May 4, 2005	9:30 a.m. Force Structure Plan and SecDef Guidance on the QDR	Completed
May 16, 2005	SecDef BRAC Recommendations received 1:30 p.m. Presentation of Department of Defense BRAC Recommendations and Methodology Panel 1: Secretary of Defense and Chairman, Joint Chiefs of Staff Panel 2: USD (AT&L) and DUSD(I&E)	
May 17, 2005	9:30 a.m. Presentation of Recommendations and Methodology – Air Force 1:30 p.m. Presentation of Recommendations and Methodology – DoN	
May 18, 2005	9:30 a.m. Presentation of Recommendations and Methodology – Army 1:30 p.m. Presentation of Recommendations and Methodology – DoD Joint Cross Service Groups	
May 19, 2005	9:30 a.m. Presentation of Recommendations and Methodology – DoD Joint Cross Service Groups	
NLT Sep 8, 2005	Recommendations from Commission to President	





Additional Information Available at:  
<http://www.defenselink.mil/brac/>