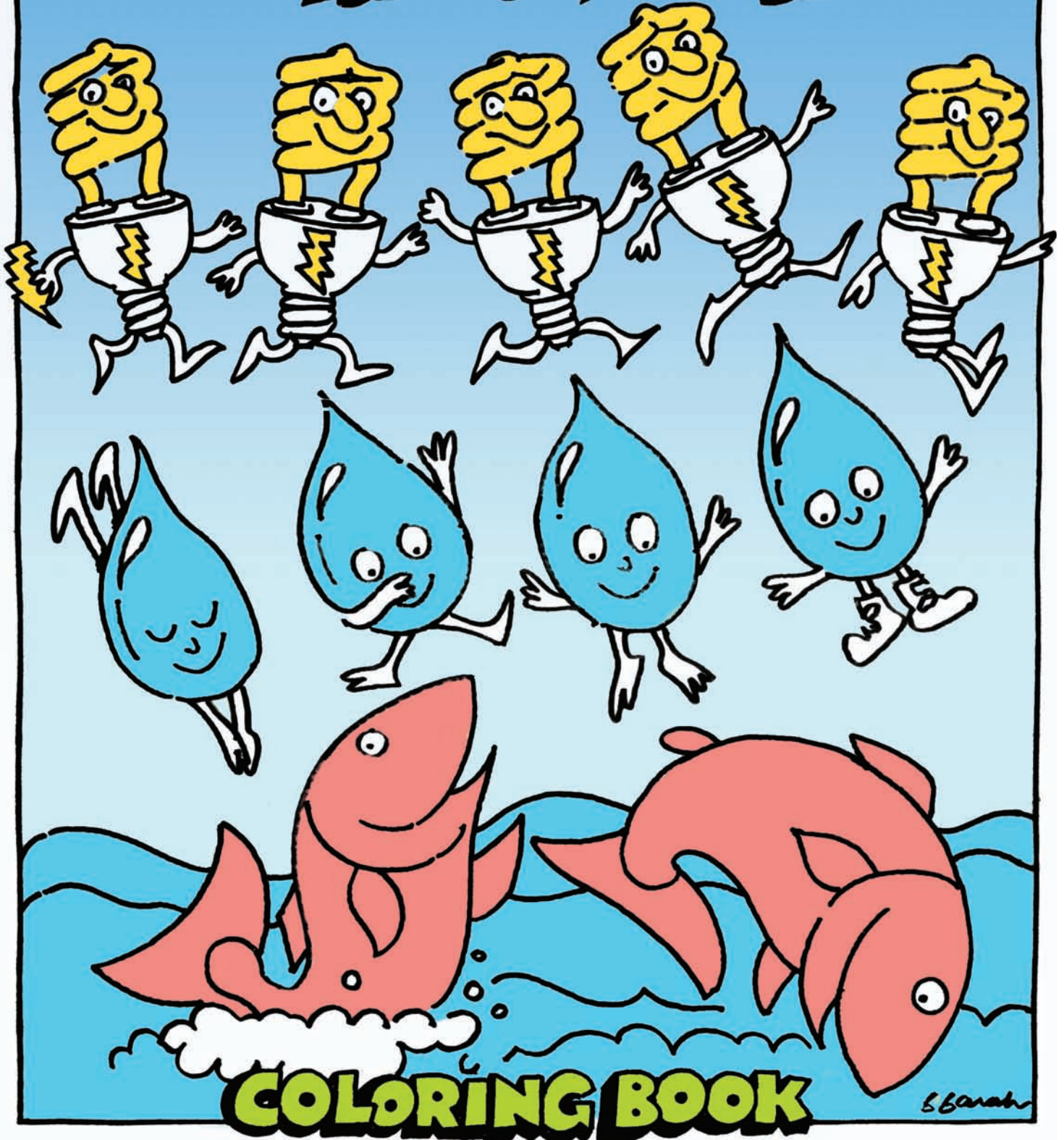
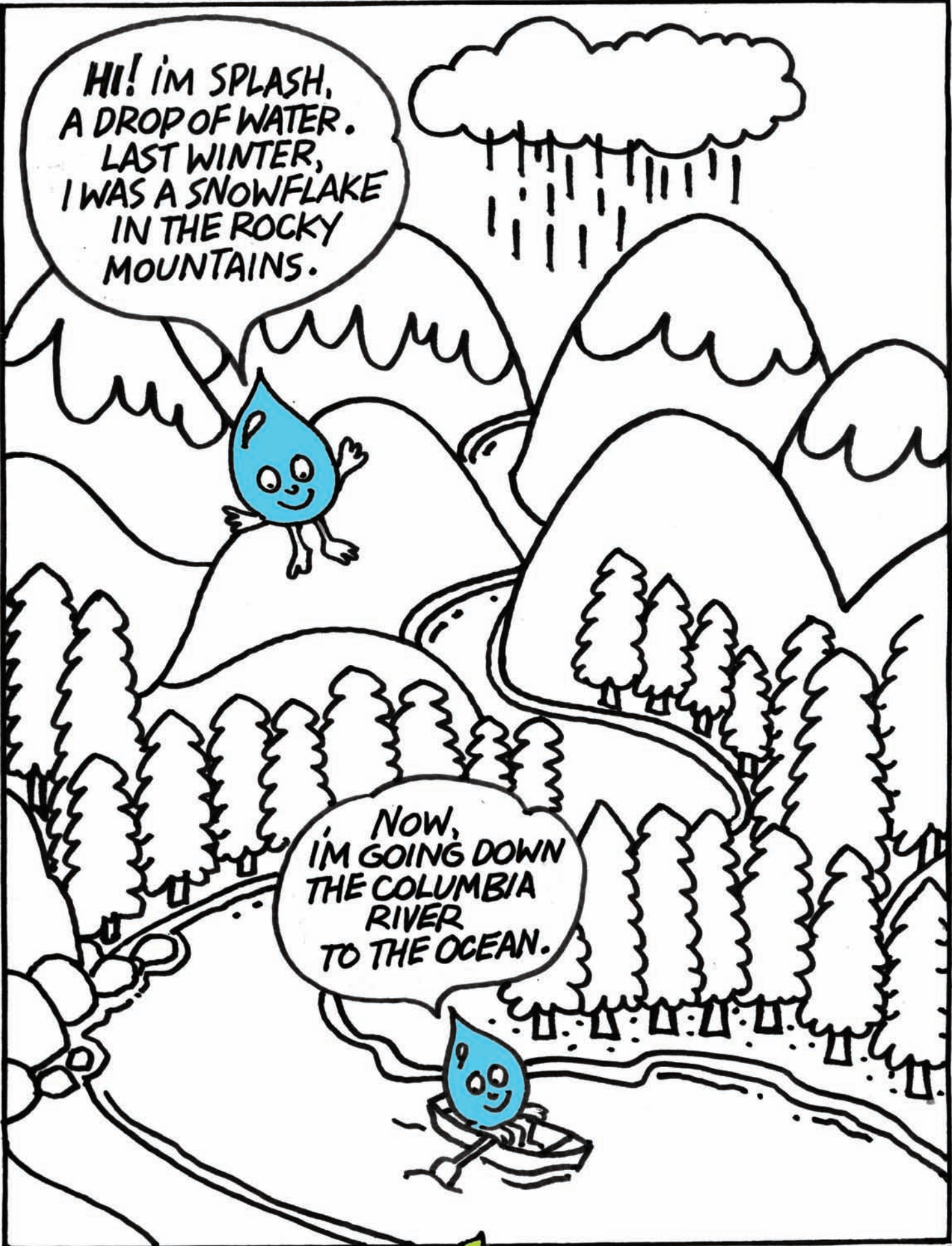


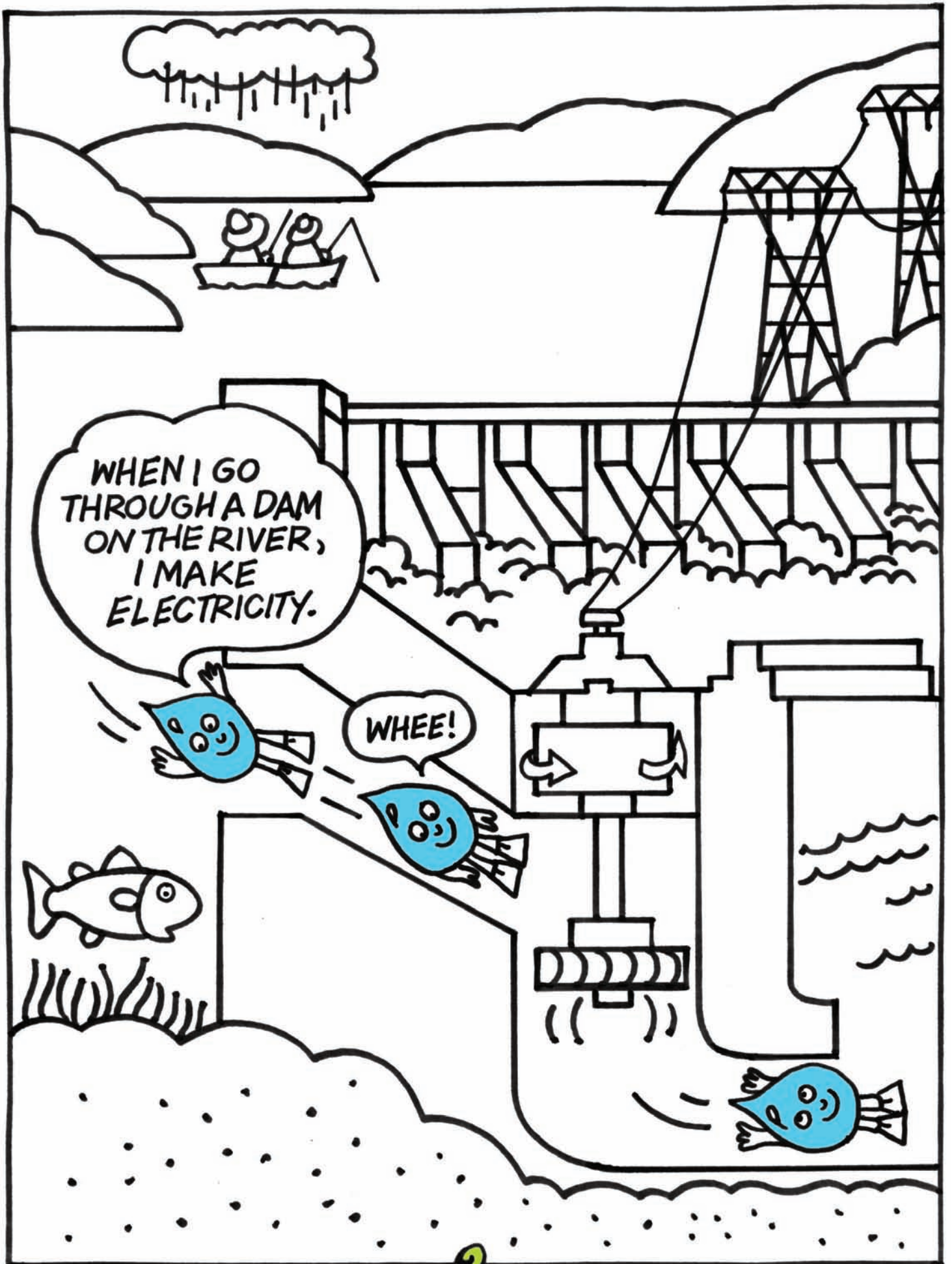
SAVING ENERGY WITH ZIPPY, SPLASH, AND SAM N.





HI! I'M SPLASH,
A DROP OF WATER.
LAST WINTER,
I WAS A SNOWFLAKE
IN THE ROCKY
MOUNTAINS.

NOW,
I'M GOING DOWN
THE COLUMBIA
RIVER
TO THE OCEAN.



WHEN I GO THROUGH A DAM ON THE RIVER, I MAKE ELECTRICITY.

WHEE!

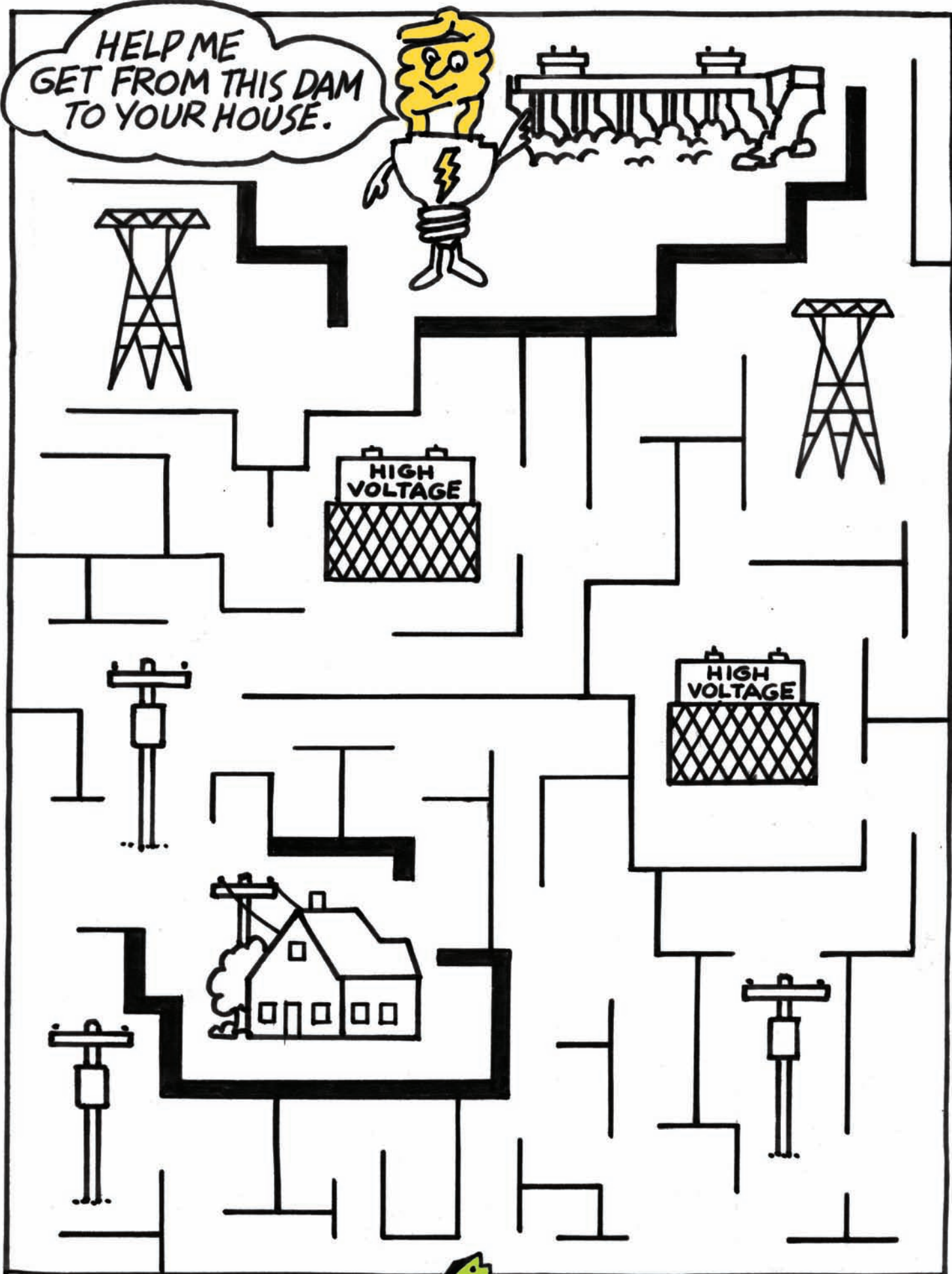
I'M ZIPPY,
A WATT OF
ELECTRICITY.
I COME FROM
THE DAM
TO WORK FOR
YOU.

TO GET TO YOU,
I RIDE ON
POWER LINES...

HIGH VOLTAGE

...TO CITIES
AND YOUR
HOME...

...STAY AWAY
FROM
POWER LINES.



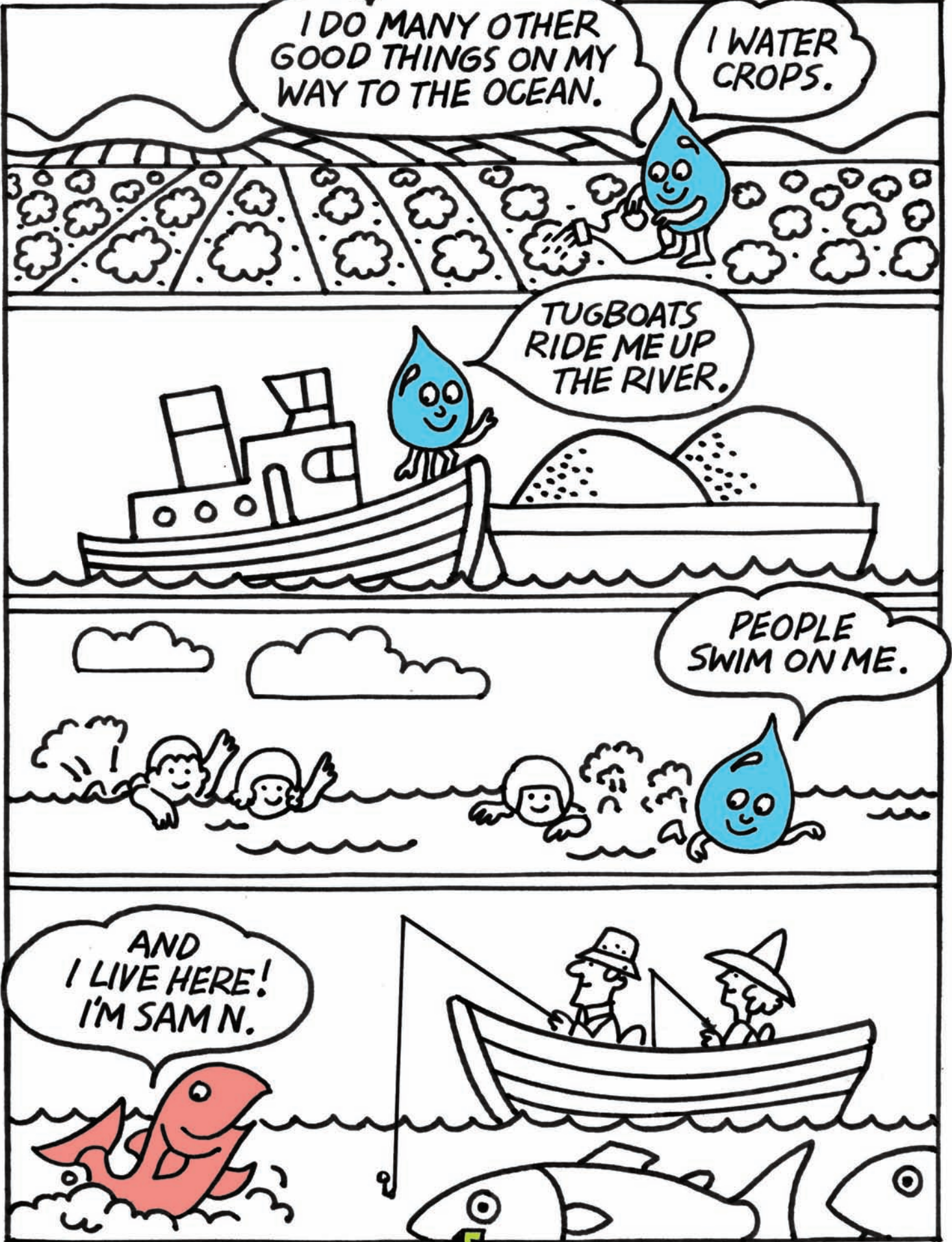
I DO MANY OTHER
GOOD THINGS ON MY
WAY TO THE OCEAN.

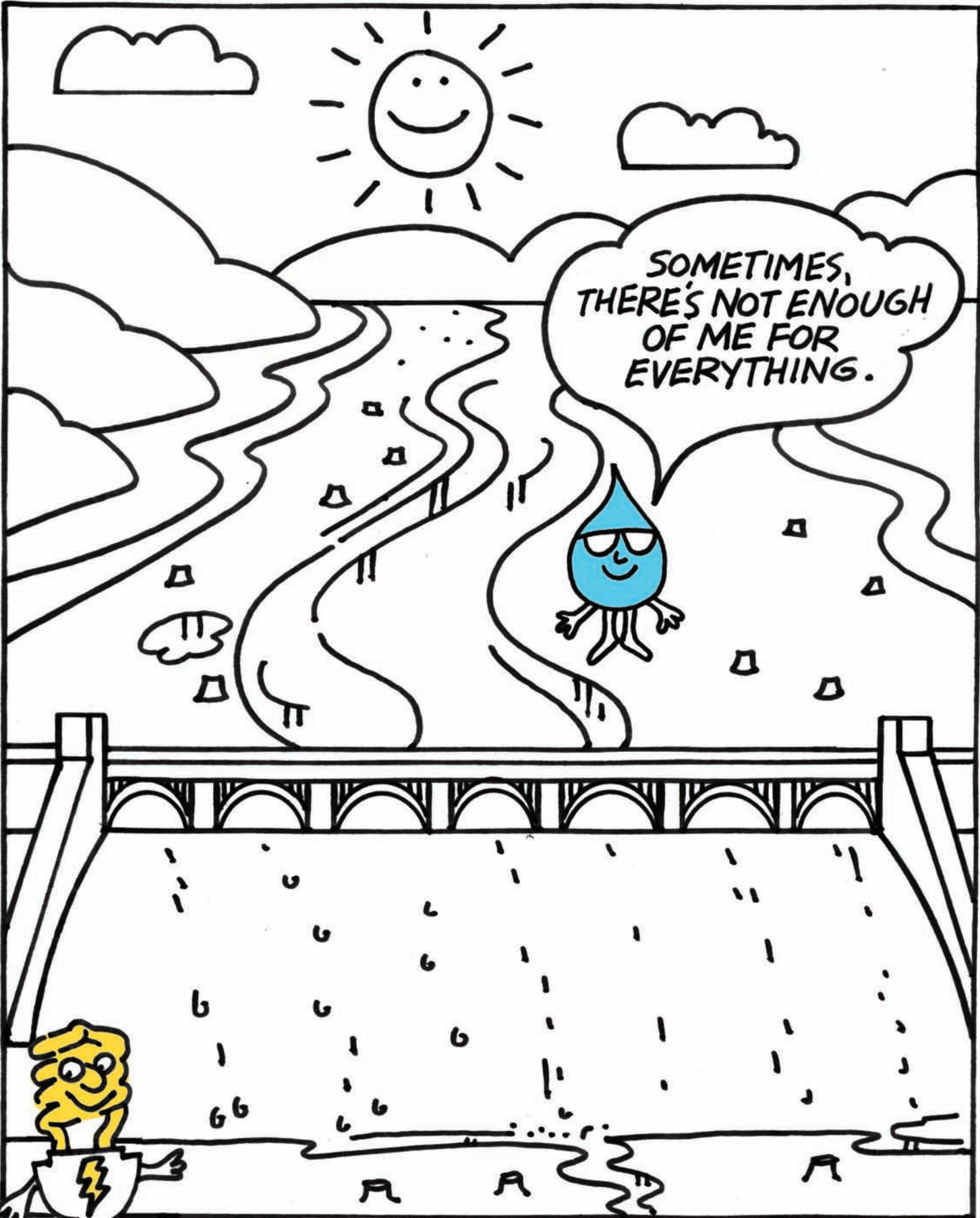
I WATER
CROPS.

TUGBOATS
RIDE ME UP
THE RIVER.

PEOPLE
SWIM ON ME.

AND
I LIVE HERE!
I'M SAM N.

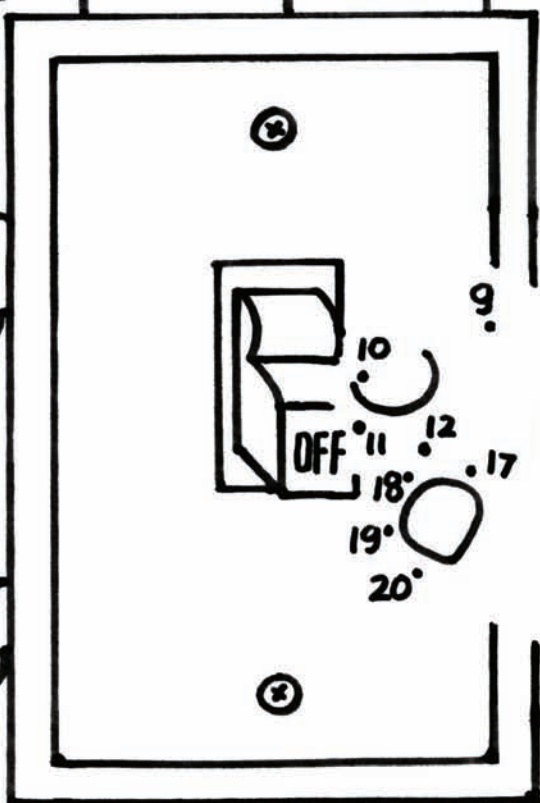




SOMETIMES,
THERE'S NOT ENOUGH
OF ME FOR
EVERYTHING.

SAVING ELECTRICITY CAN HELP.

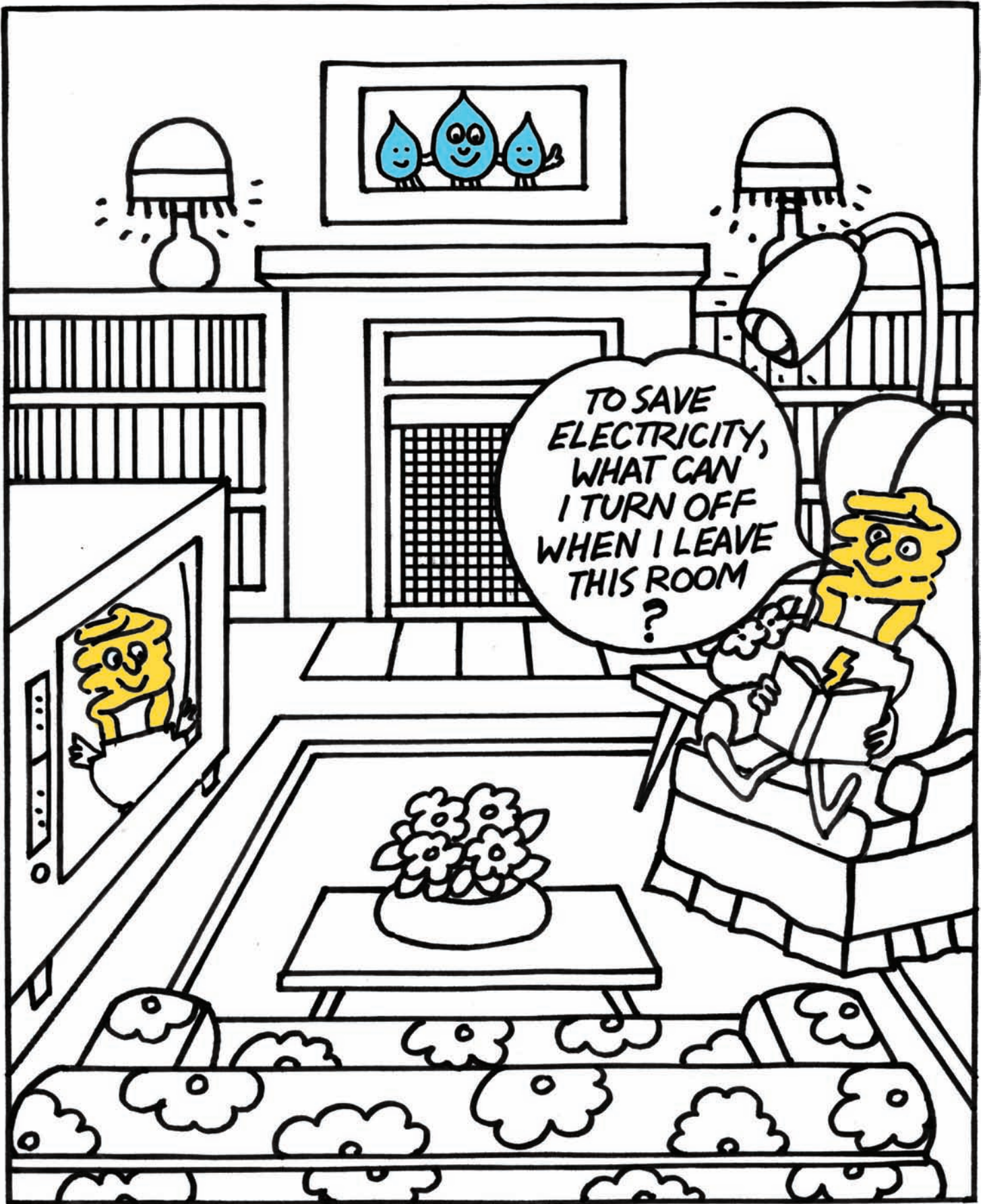
YOU
CAN SAVE
ELECTRICITY.
TO FIND OUT HOW,
FOLLOW THE
DOTS.





HOW MANY THINGS IN THIS PICTURE USE ME?

ANSWER: 25



ANSWER: TV, THREE LIGHTS.

HOT-WATER DRIPS
WASTE ME.
TURN TAPS OFF
TIGHTLY!

AND
YOU'LL
SAVE ME,
TOO!



ANSWER: [THEY'RE INSULATING THE ATTIC TO KEEP HEAT IN THE HOUSE.]

SAVING ELECTRICITY GIVES US MORE CHOICES
ON HOW TO USE ME, THE RIVER'S WATER.

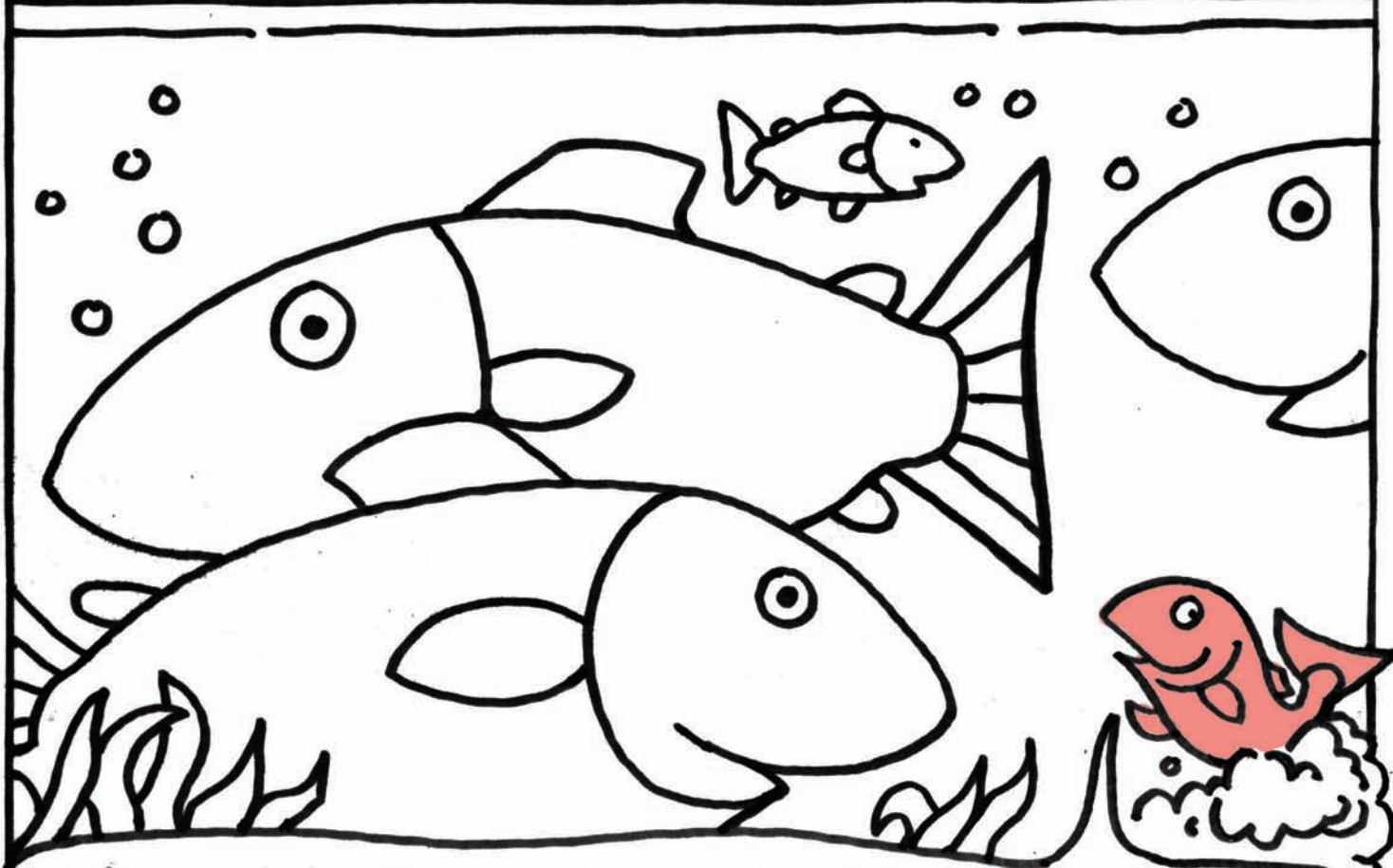
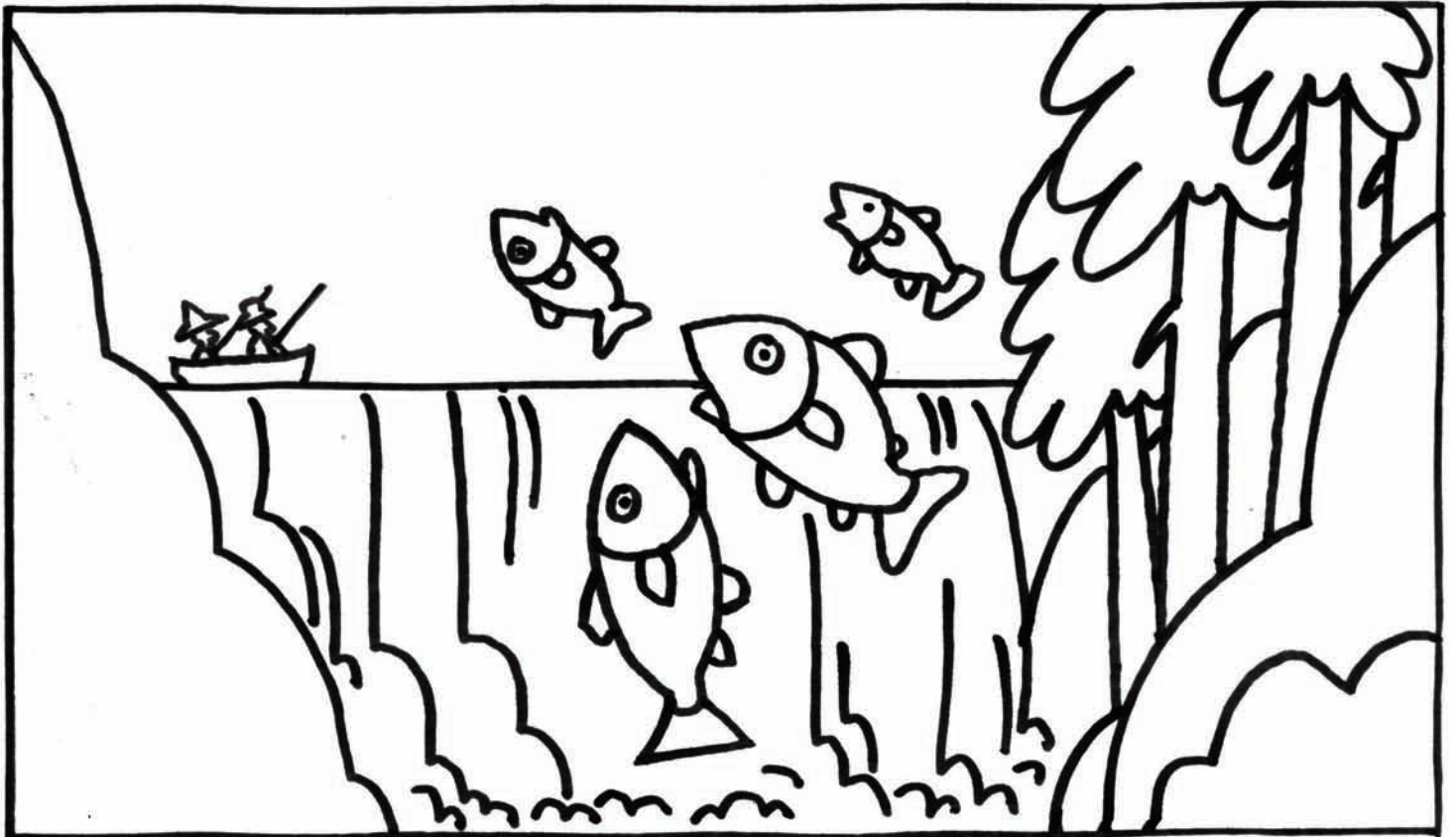


A T B E O P V A B M C
M S A L M O N F O I R
J B R E P K E C A R F
V I G C A O N I T R O
G F E T F B W B S I M
U I C R O P S E U G W
H S A I L I N G R A R
O H X C A M P D W T A
M E T I H S D E T I G
S U F T R O U T G O H
P L N Y I N G R L N T



FIND AND CIRCLE THE WORDS.
THEY SHOW SOME WAYS WE USE THE RIVER.

SAILING IRRIGATION FISH CROPS
BOATS FARM BARGE TROUT
CAMP SALMON ELECTRICITY POWER



SAVING ELECTRICITY MAKES IT EASIER TO SET WATER ASIDE FOR SALMON, SO THERE WILL BE MORE OF ME.

SAVING ELECTRICITY
MEANS WE WON'T NEED
AS MANY POWER PLANTS,
AND THAT HELPS
KEEP THE ENVIRONMENT
CLEAN AND NATURAL.



ZIPPY ISN'T JUST ANY LIGHT BULB. HE IS AN ENERGY STAR - AN ENERGY SAVING COMPACT FLOURESCENT. TO SAVE ENERGY AND MONEY LOOK FOR THE ENERGY STAR LABEL. FOR MORE INFORMATION, GO TO: WWW.BPA.GOV.

