



On Oct. 1, 2011, the Bureau of Ocean Energy Management, Regulation and Enforcement (BOEMRE) was replaced by the Bureau of Ocean Energy Management (BOEM) and the Bureau of Safety and Environmental Enforcement (BSEE) as part of a major reorganization.

BOEM manages the exploration and development of the nation's offshore resources. It seeks to appropriately balance economic development, energy independence, and environmental protection through oil and gas leases, renewable energy development and environmental reviews and studies.

Key functions of BOEM include:

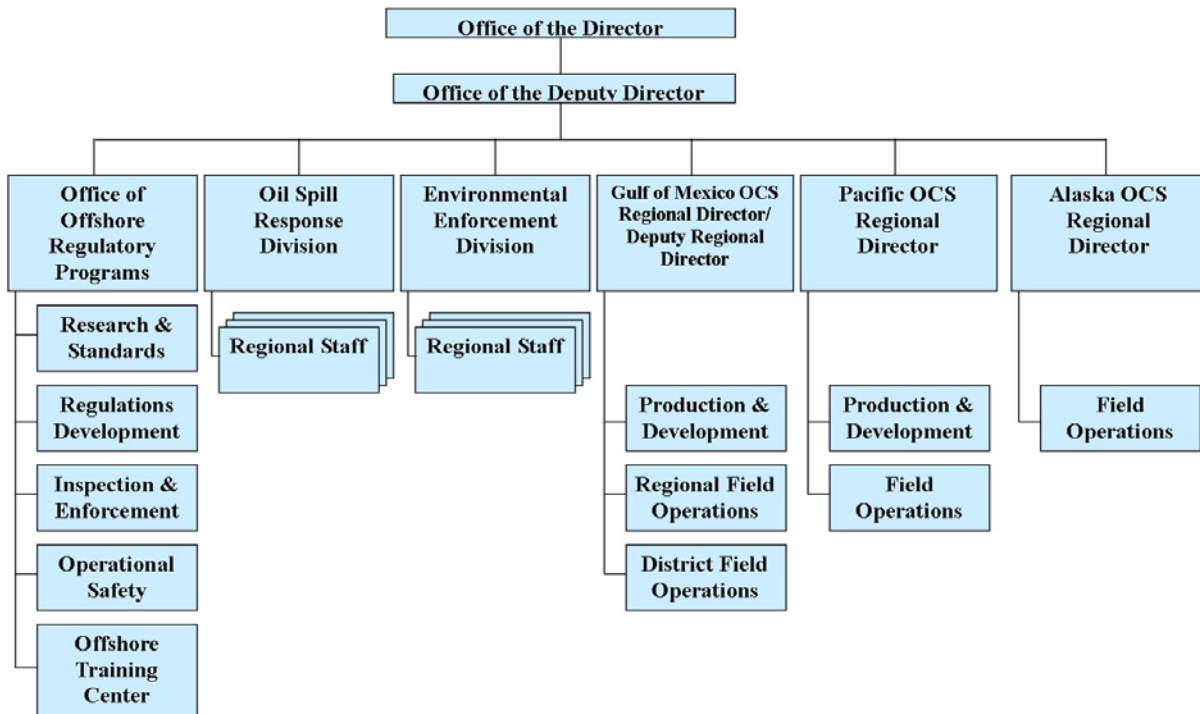
- The **Office of Strategic Resources**, which is responsible for the development of the **Five Year Outer Continental Shelf (OCS) Oil and Natural Gas Leasing Program**, oversees assessments of the oil, gas and other mineral resource potential of the OCS, inventories oil and gas reserves and develops production projections, and conducts economic evaluations that ensure the receipt of fair market value by U.S. taxpayers for OCS leases.
- BOEM handles the actual **Oil and Gas Lease Sales**, along with **Sand and Gravel** negotiated agreements and official maps and GIS data.
- **BOEM is responsible for offshore Renewable Energy Programs.** The Renewable Energy Program grants leases, easements, and rights-of-way for orderly, safe, and environmentally responsible renewable energy development activities.
- BOEM's **Office of Environmental Programs** conducts environmental reviews, including *National Environmental Policy Act* (NEPA) analyses and compliance documents for each major stage of energy development planning. These analyses inform the bureau's decisions on the Five Year Program, and conventional and renewable energy leasing and development activities. Additionally, BOEM's scientists conduct and oversee environmental studies to inform policy decisions relating to the management of energy and marine mineral resources on the OCS.
- BOEM is supported by three regional offices in New Orleans, La., Camarillo, Calif., and Anchorage, Alaska. The regional offices manage oil and gas resource evaluations, environmental studies and assessments, leasing activities including the review of **Exploration Plans** and **Development Operations and Coordination Documents**, fair market value determinations, and geological and geophysical permitting.

BOEM Organizational Structure



Bureau of Safety and Environmental Enforcement (BSEE)

BSEE promotes safety, protects the environment, and conserves resources offshore through vigorous regulatory oversight and enforcement, and is responsible for permitting, inspections and environmental compliance. BSEE’s organizational structure includes:



Office of Natural Resource Revenue (ONRR)

ONRR split from BOEMRE on Oct. 1, 2010, and moved under the Department of the Interior’s Assistant Secretary for Policy, Management and Budget. ONRR is responsible for the collection and disbursement of revenue from federal and American Indian lands onshore and on the OCS.