

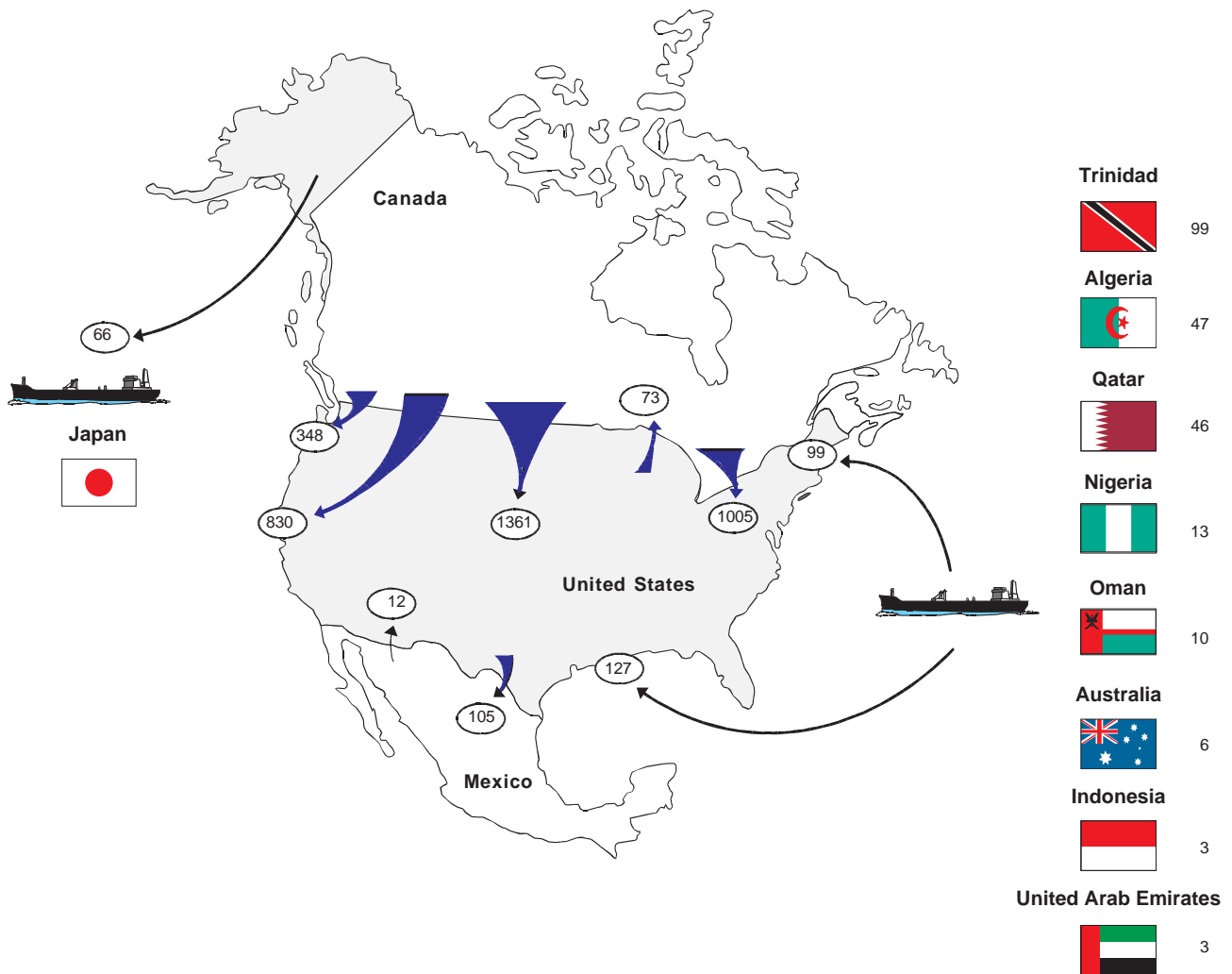
U.S. Natural Gas Imports and Exports — 2000

By James Todaro

Natural gas imports and exports continued to play a significant part in the U.S. natural gas market in the year 2000. Trade with North American neighbors, Canada and Mexico, dominated both import and export activities. In addition, imports of liquefied natural gas (LNG) from several international suppliers increased significantly. Some of the highlights from last year were:

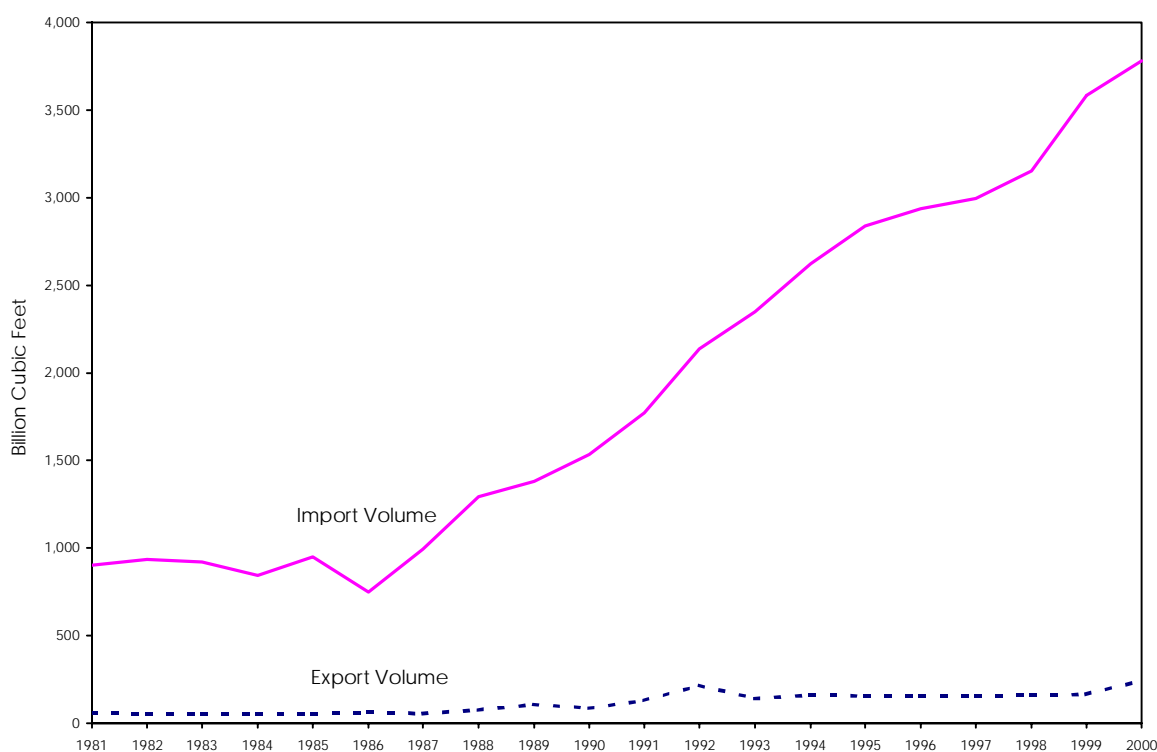
- Net imports moved up to 3,538 billion cubic feet (Bcf) - an increase of 3.4 percent from 1999.
- U.S. exports increased by 49 percent to 244 Bcf.
- The price of natural gas imports rose sharply in 2000 to an average of \$3.95 per thousand cubic feet (Mcf) for the year or more than 76 percent greater than the 1999 average of \$2.24 per Mcf.
- For the first time since 1980, the average annual price of imported LNG was lower than the price of imported gas delivered by pipeline, \$3.50 vs.

Figure SR1. Flow of U.S. Natural Gas Imports and Exports, 2000
(Billion Cubic Feet)



Source: Office of Fossil Energy, U.S. Department of Energy, *Natural Gas Imports and Exports*.

Figure SR2. Total U.S. Natural Gas Imports and Exports, 1981-2000



Sources: 1994 and Earlier Years: Energy Information Administration, Form FPC-14, "Annual Report for Importers and Exporters of Natural Gas." 1995 to 2000: Office of Fossil Energy, U.S. Department of Energy, *Natural Gas Imports and Exports*.

\$3.98 per Mcf (\$3.20 vs. \$3.90 per million Btu).

Trade with Canada

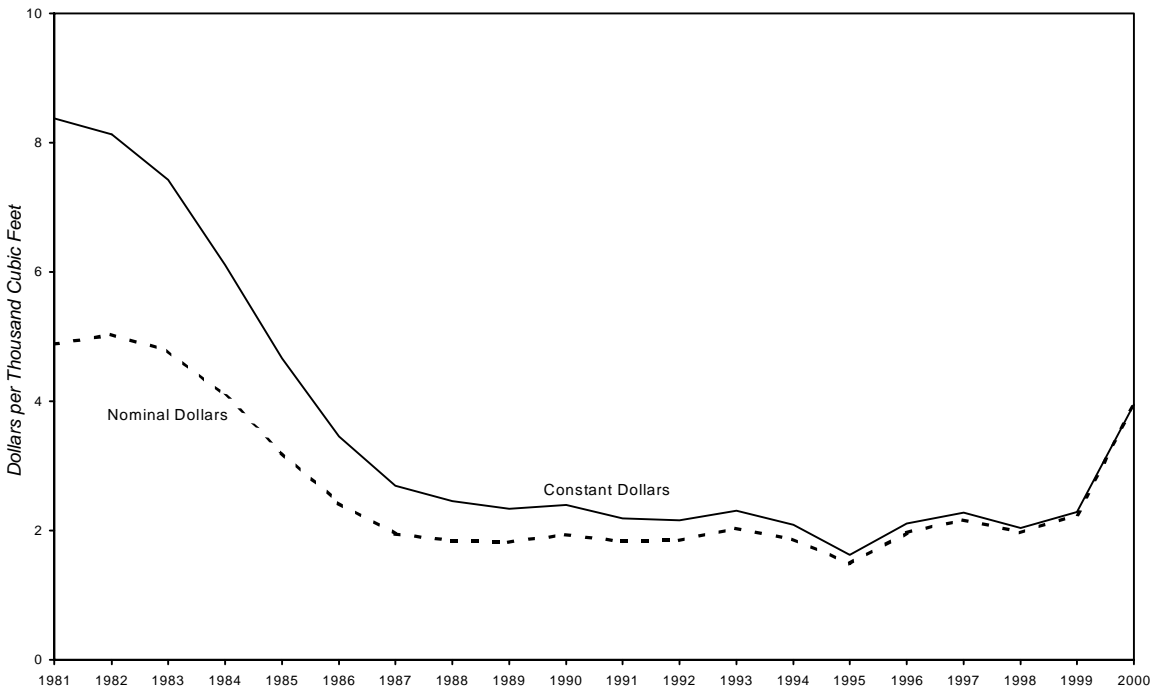
Natural gas imports from Canada reached 3,544 Bcf, an increase of 5.2 percent in 2000. They comprised 94 percent of total U.S. natural gas imports in 2000. Similar to U.S. domestic gas prices (Table 4), the price of natural gas imports from Canada moved up sharply in the second half of 2000 as average monthly prices rose from \$3.05 per Mcf in May to \$7.47 per Mcf in December (Table SR7). This brought the annual average price to \$3.97 per Mcf for the year or more than 78 percent greater than the 1999 average of \$2.23 per Mcf. Contributing to the rise in import prices was the record high natural gas demand in 2000 (Table 3).

The 5.2 percent increase in natural gas imports from Canada in 2000 reflected both

an increase in U.S. demand and increased crossborder capacity of roughly 1.9 Bcf per day. In 2000 the Sable Island Offshore Energy Project (SOEP), which delivers gas from offshore Nova Scotia to New England and enters the United States at Calais, Maine, initiated operations in January. It reached its certificated capacity of 400 million cubic feet (MMcf) per day in August 2000. The Alliance Pipeline System crosses the border at Sherwood, North Dakota, and delivers gas from western Canada to the Chicago area. It began very limited operations in June and reached its full operating capacity of 1.3 Bcf per day in December 2000.

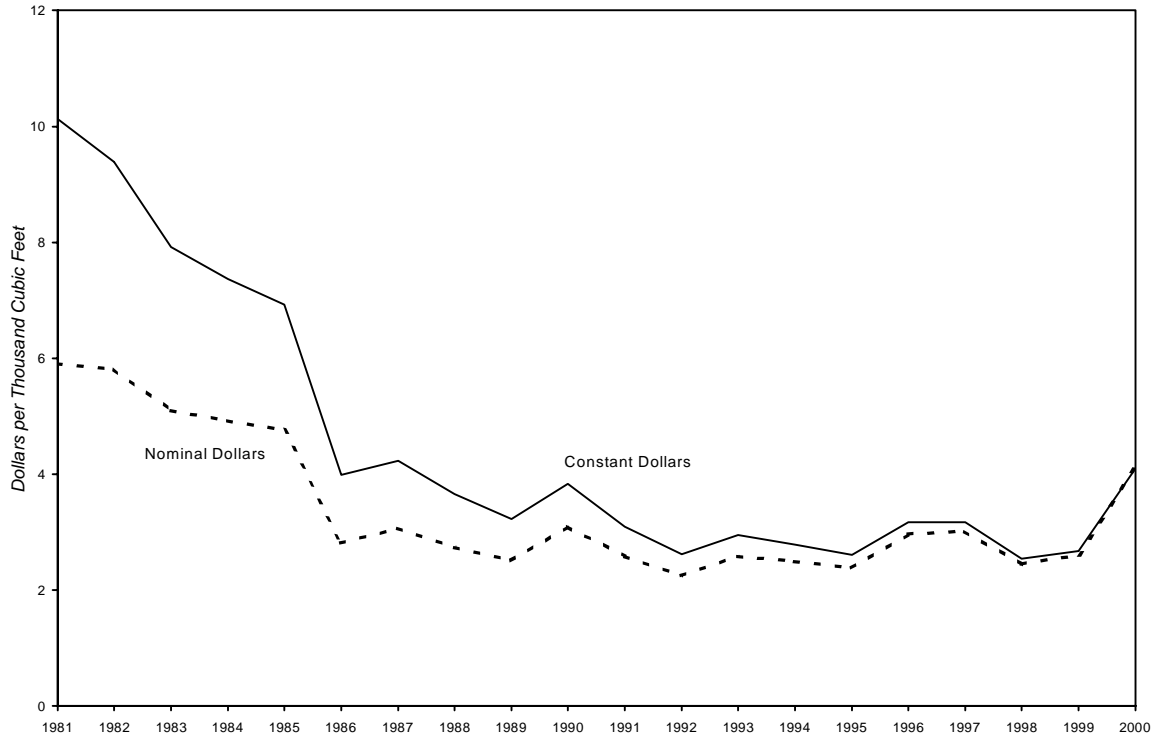
There are 24 principal entry points for Canadian gas imports into the United States which are grouped in this report into four regions: the Pacific Northwest, the West, the Midwest, and the Northeast (Table SR6). Imports into the West and the Northeast rose

Figure SR3. Average Price of U.S. Natural Gas Imports, 1981-2000



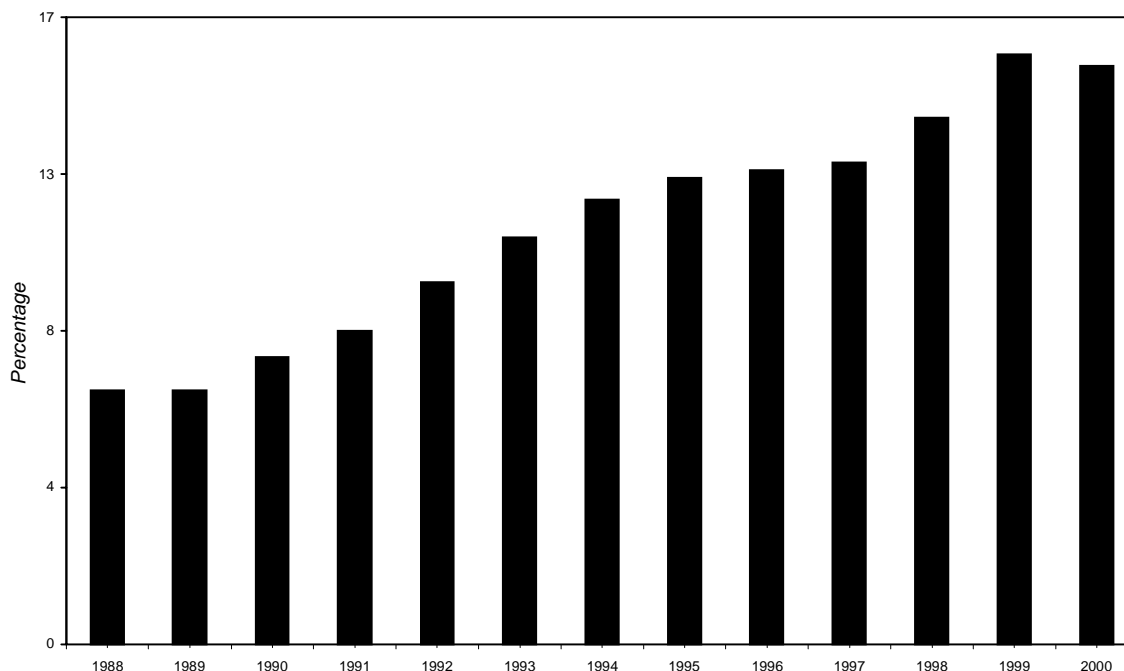
Sources: Nominal Dollars: 1994 and Earlier Years: Energy Information Administration, Form FPC-14, "Annual Report for Importers and Exporters of Natural Gas." 1995 to 2000: Office of Fossil Energy, *Natural Gas Imports and Exports*. Constant Dollars: Prices were converted to 2000 dollars using the chain-type price indexes for Gross Domestic product (1996 = 1.0) as published by the U.S. Department of Commerce, Bureau of Economic Analysis.

Figure SR4. Average Price of U.S. Natural Gas Exports, 1981-2000



Sources: Nominal Dollars: 1994 and Earlier Years: Energy Information Administration, Form FPC-14, "Annual Report for Importers and Exporters of Natural Gas." 1995 to 2000: Office of Fossil Energy, *Natural Gas Imports and Exports*. Constant Dollars: Prices were converted to 2000 dollars using the chain-type price indexes for Gross Domestic product (1996 = 1.0) as published by the U.S. Department of Commerce, Bureau of Economic Analysis.

Figure SR5. U.S. Net Imports as a Percentage of Total Consumption, 1988-2000



Sources: 1994 and Earlier Years: Energy Information Administration, Form FPC-14, "Annual Report for Importers and Exporters of Natural Gas." 1995 to 2000: Office of Fossil Energy, U.S. Department of Energy, *Natural Gas Imports and Exports*.

while imports to the Midwest and the Pacific Northwest declined from 1999 to 2000 (Table SR6). The Midwest, which had a slight drop (3 Bcf or 0.2 percent) from 1999 levels, continued to have the greatest percentage (38 percent) of total gas imports from Canada. Imports into the Northeast had the second largest volume with 1,005 Bcf. The Northeast region showed the largest year-to-year change. Most of this increase (217 Bcf) in 2000 was due to the opening of Sable Island. Import prices rose sharply in all four regions. The Pacific Northwest had the highest price at \$4.28 per Mcf and the largest year-to-year price increase. As a result the Pacific Northwest surpassed the Northeast as the region with the highest import prices.

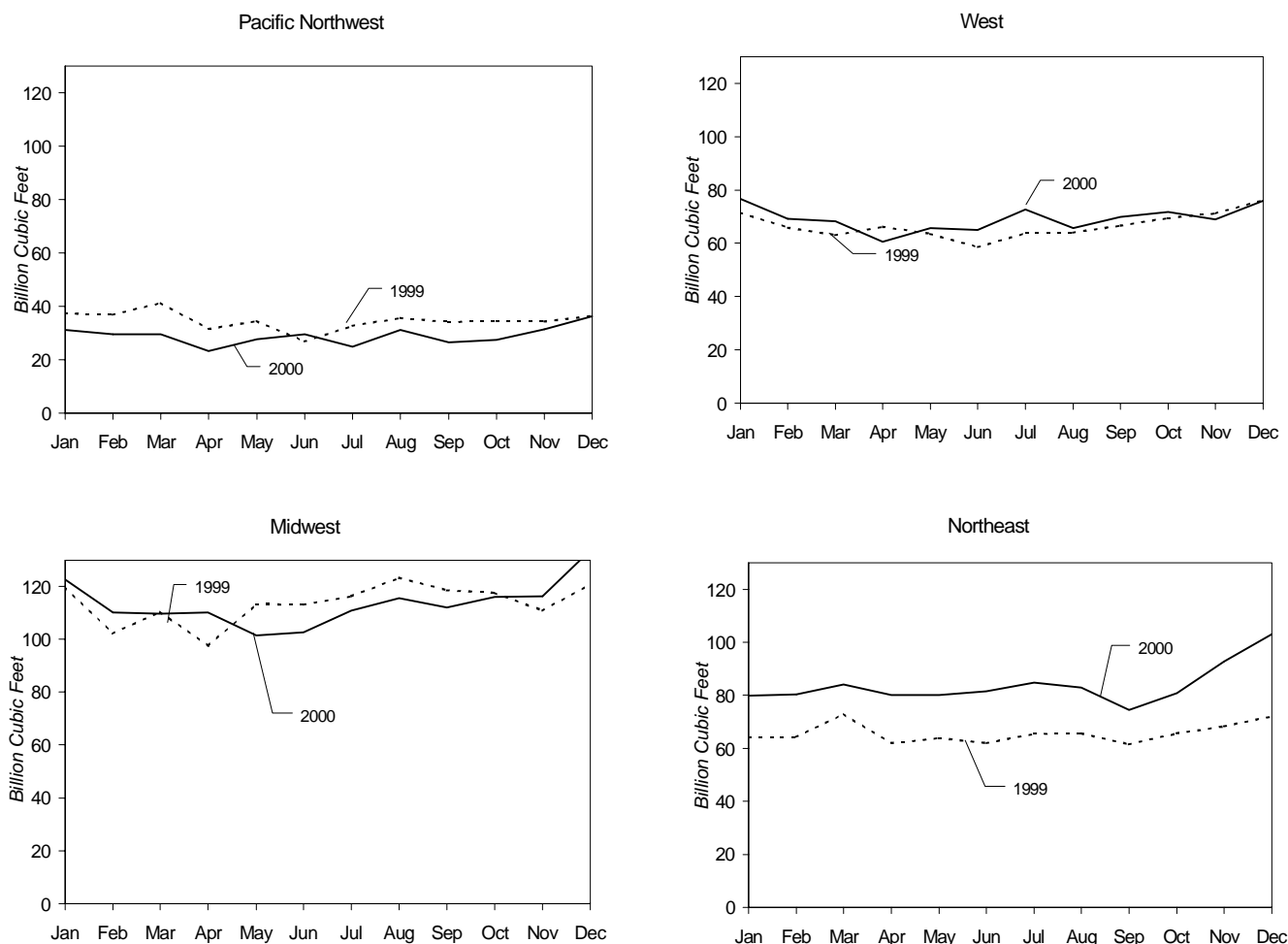
U.S. natural gas exports to Canada increased to 73 Bcf in 2000 from 38 Bcf in 1999. The average price of exports to Canada was \$3.66 per Mcf, 55 percent above the 1999 price (Table SR3). Pipeline exports to Canada represented 41 percent of total U.S. pipeline exports in 2000. The United States

exports natural gas by pipeline to Canada at four primary crossborder points, three in Michigan and one in Montana. In 2000, the largest increase (18 Bcf) occurred at St. Clair, Michigan. The Vector Pipeline with a capacity of 720 MMcf per day began exporting gas at St Clair in November 2000. The Detroit, Michigan, export point had the largest volume of exports to Canada in 2000 with 36 Bcf, compared with a total of 30 Bcf at St. Clair. However, by the end of 2000, monthly exports at St. Clair exceeded exports at any other point.

Trade with Mexico

During 2000 natural gas pipeline exports from the United States to Mexico climbed to 105 Bcf, surpassing the previous record of 96 Bcf in 1992. Along with the increase in volume, the average price moved up to \$4.26 per Mcf, 87 percent above the 1999 price. Contributing to this rise in exports to Mexico is the continued growth of

Figure SR6. U.S. Natural Gas Imports from Canada by Regional Point of Entry, 1999-2000



Source: Office of Fossil Energy, U.S. Department of Energy, *Natural Gas Imports and Exports*.

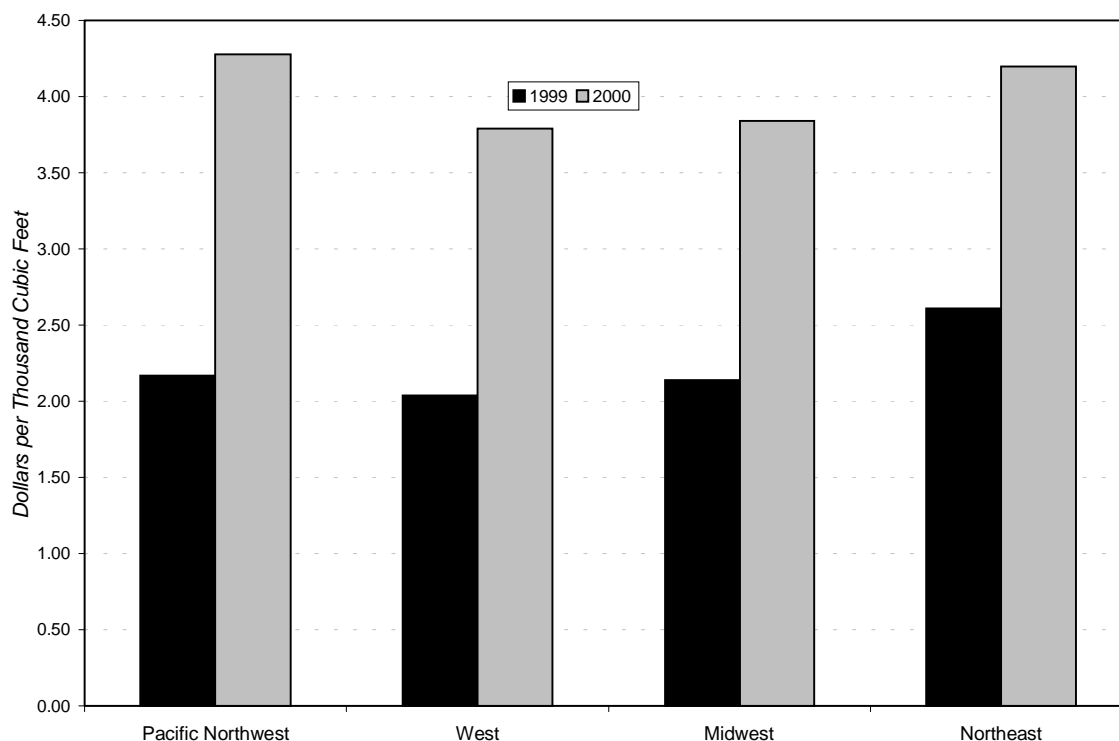
manufacturing facilities located near the U.S./Mexican border.

In 2000, the United States added three pipeline crossborder export points to Mexico bringing the total to nine. The new pipelines began operating at Alamo and McAllen, Texas, and Otay Mesa, California. These new facilities, operating primarily in the second half of 2000, accounted for over 55 percent of the increase in exports to Mexico in 2000. For the third year in a row, the principal point of exit for pipeline exports to Mexico was Clint, Texas, where 43 percent of U.S. pipeline exports to Mexico were shipped on the Samalayuca pipeline. Most of the exports at Clint are used to fuel the gas-fired Samalayuca power plants. Also in

2000, 418 MMcf of liquefied natural gas was sent to Mexico by truck. This is an increase of over 50 percent from 1999's level of 275 MMcf. The LNG crosses the border at Nogales, Arizona, and San Diego, California.

The United States imported 12 Bcf of natural gas from Mexico by pipeline in 2000, a drop of 43 Bcf from the previous year. This appears to be the result of the growth in Mexican industrial consumption, especially in the northern region of the country, and higher prices. The price of imports from Mexico was \$5.43 per Mcf, compared with \$2.14 in 1999. The primary entry point was Hidalgo, Texas.

Figure SR7. Average Price of U.S. Natural Gas Pipeline Imports from Canada by Regional Point of Entry, 1999-2000



Source: Office of Fossil Energy, U.S. Department of Energy, *Natural Gas Imports and Exports*.

Liquefied Natural Gas

During 2000, eight companies imported 226 Bcf of liquefied natural gas into the United States. This was the largest volume of LNG imports since 1979 when 253 Bcf of the fuel was imported from Algeria (Table SR7). In 2000, nine countries sent 100 cargoes to the two U.S. terminals located in Everett, Massachusetts, and Lake Charles, Louisiana. The facility at Lake Charles received 55 cargoes and 127 Bcf, while Everett took 45 cargoes and 99 Bcf.

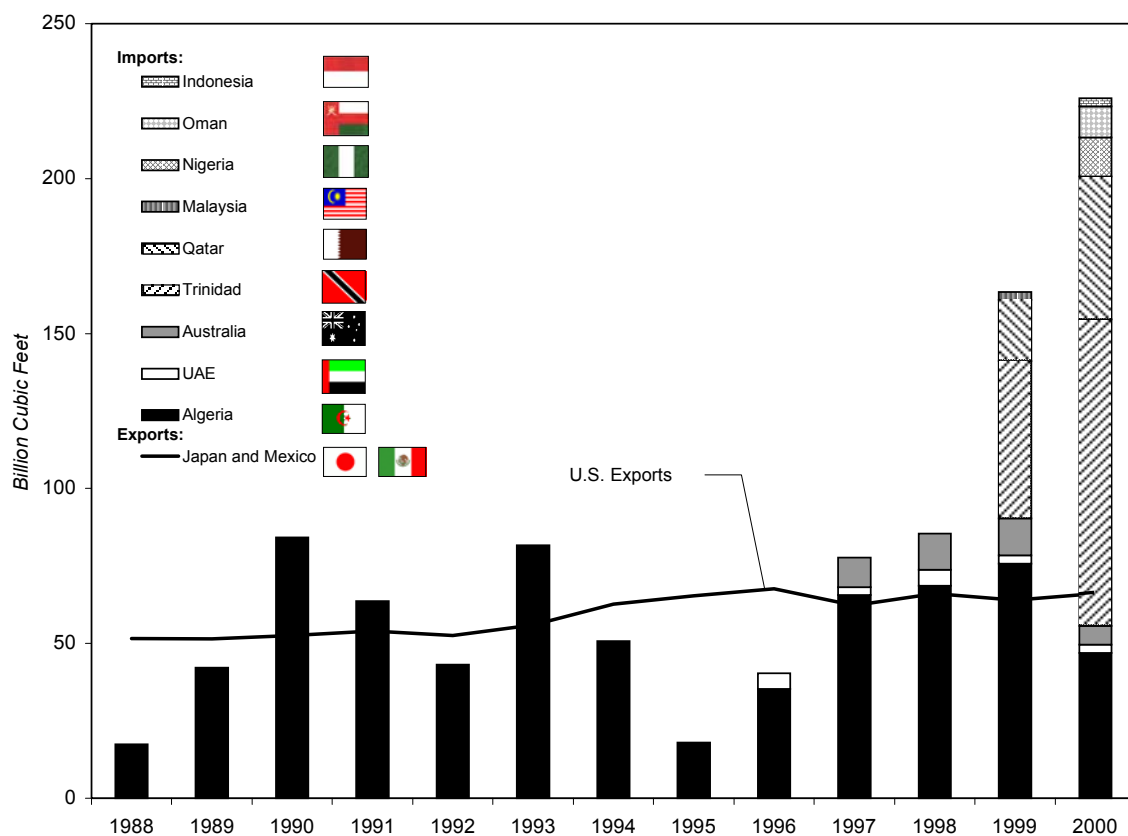
Trinidad, which began delivering LNG to the United States in May 1999, was the leading supplier of LNG to the United States in 2000. Algeria, historically the leading supplier moved to second on the list of nine exporting countries in 2000. Two new suppliers, Nigeria and Oman, made their first deliveries to the United States in 2000, while Indonesia delivered LNG to the United States for the first time since 1986.

Together these latter three countries delivered nine cargoes totaling almost 25 Bcf. Malaysia, which sent one cargo to the United States for the first time in 1999, did not make any deliveries in 2000.

The average price of LNG shipments to the United States in 2000 was \$3.50 per Mcf, compared with last year's price of \$2.47. For the first time since 1980, the average annual price of imported LNG was lower than the price of gas imported by pipeline, \$3.50 vs. \$3.98 per Mcf. On a per million Btu (MMBtu) basis, the price comparison between the two natural gas fuels is even more noteworthy with LNG at \$3.20 per MMBtu and pipeline gas at \$3.90 per MMBtu.

LNG, like pipeline gas, is traded on a spot market and also sold by contracts with varying term lengths. According to reports filed with the Department of Energy's Office of Fossil Energy, the average landed

Figure SR8. U.S. Imports and Exports of Liquefied Natural Gas (LNG), 1988-2000



Sources: 1994 and Earlier Years: Energy Information Administration, Form FPC-14, "Annual Report for Importers and Exporters of Natural Gas." 1995 to 2000: Office of Fossil Energy, U.S. Department of Energy, *Natural Gas Imports and Exports*.

cost of LNG from Trinidad at Everett, Massachusetts, in 2000 under an existing long-term contract was \$3.15 per MMBtu. These reports also indicate that several spot transactions were delivered at Lake Charles from Trinidad and other locations at prices that exceeded \$4.40 per MMBtu in 2000.

During 2000, the United States continued to export LNG to Japan by tanker. LNG exports to Japan increased to 66 Bcf from 64 Bcf. The price of these exports moved up

sharply, averaging \$4.31 per Mcf. This is an increase of 40 percent from last year. LNG is shipped from southern Alaska to Japan under long-term agreements that began in 1978 and have averaged over 60 Bcf per year since 1994 (Table SR9). For the third year in a row, the volume of LNG exports to Mexico increased, reaching 418 MMcf in 2000. Even with this sharp increase in 2000, U.S. LNG exports to Mexico remain less than 1 percent of total LNG exports.

Data Sources

Data for 1995 through 2000 are based on company filings with the Department of Energy, Office of Fossil Energy. These filings report data on a monthly level and are received quarterly. The Office of Fossil Energy collects these data as part of its regulatory oversight responsibilities. These data are published by the Office of Fossil Energy in the quarterly report, *Natural Gas Imports and Exports* (DOE/FE-0360).

The data for 1994 and earlier years are taken from Form FPC-14, "Annual Report for Importers and Exporters of Natural Gas," which was discontinued in 1995. The data reported on Form FPC-14 represented physical movements of natural gas, whereas the data collected by the Office of Fossil Energy are reported on an equity (sales) basis. For 1994 and earlier years, comparisons of the information in this article (physical movements) with the information reported by the Office of Fossil Energy (sales) may show differences because reporting requirements were different. Efforts were made to resolve these differences. Further information about how import and export data are collected is provided in the *Natural Gas Monthly*, Appendix B, "Data Sources."

Table SR1. Historical Summary of U.S. Natural Gas Net Imports, 1955-2000
(Million Cubic Feet)

Year	Total Imports	Total Exports	Net Imports	Total Consumption	Net Imports as Percentage of Total Consumption
1955	10,888	31,029	-	8,693,657	-
1956	10,380	35,963	-	9,288,865	-
1957	37,941	41,655	-	9,846,139	-
1958	135,797	38,719	97,078	10,302,608	0.9
1959	133,990	18,413	115,577	11,321,181	1.0
1960	155,646	11,332	144,314	11,966,537	1.2
1961	218,860	10,747	208,113	12,489,268	1.7
1962	401,534	15,814	385,720	13,266,513	2.9
1963	406,204	16,957	389,247	13,970,229	2.8
1964	443,326	19,603	423,723	14,813,808	2.9
1965	456,394	26,132	430,262	15,279,716	2.8
1966	479,780	24,639	455,141	16,452,403	2.8
1967	564,226	81,614	482,612	17,388,360	2.8
1968	651,885	93,745	558,140	18,632,062	3.0
1969	726,951	51,304	675,647	20,056,240	3.4
1970	820,780	69,813	750,967	21,139,386	3.6
1971	934,548	80,212	854,336	21,793,454	3.9
1972	1,019,496	78,013	941,483	22,101,452	4.3
1973	1,032,901	77,169	955,732	22,049,363	4.3
1974	959,284	76,789	882,495	21,223,133	4.2
1975	953,008	72,675	880,333	19,537,593	4.5
1976	963,768	64,711	899,057	19,946,496	4.5
1977	1,011,002	55,626	955,376	19,520,581	4.9
1978	965,545	52,532	913,013	19,627,478	4.7
1979	1,253,383	55,673	1,197,710	20,240,761	5.9
1980	984,767	48,731	936,036	19,877,293	4.7
1981	903,949	59,372	844,577	19,403,858	4.4
1982	933,336	51,728	881,608	18,001,055	4.9
1983	918,407	54,639	863,768	16,834,914	5.1
1984	843,060	54,753	788,307	17,950,524	4.4
1985	949,715	55,268	894,447	17,280,943	5.2
1986	750,449	61,271	689,178	16,221,296	4.2
1987	992,532	54,020	938,512	17,210,809	5.5
1988	1,293,812	73,638	1,220,174	18,029,588	6.8
1989	1,381,520	106,871	1,274,648	18,800,826	6.8
1990	1,532,259	85,565	1,446,694	18,715,090	7.7
1991	1,773,313	129,244	1,644,068	19,035,156	8.4
1992	2,137,504	216,282	1,921,222	19,544,364	9.7
1993	2,350,115	140,183	2,209,931	20,279,095	10.9
1994	2,623,839	161,738	2,462,101	20,707,717	11.9
1995	2,841,048	154,119	2,686,929	21,580,665	12.5
1996	2,937,413	153,393	2,784,020	21,966,616	12.7
1997	2,994,173	157,006	2,837,167	21,958,660	12.9
1998	3,152,058	159,007	2,993,051	21,262,023	14.1
1999	3,585,505	163,415	3,422,090	^R 21,702,582	15.8
2000	3,781,603	243,716	3,537,887	^a 22,776,642	15.5

^a Preliminary data.

- Not Applicable.

^R Revised Data.

Notes: Totals may not equal sum of components due to independent rounding. Geographic coverage is the continental United States including Alaska.

Sources: Total Consumption: *Historical Natural Gas Annual* for

1955 through 1989; *Natural Gas Monthly* July 1995 for 1989 and 1990, August 2000 for 1991 through 2000. **All Other Data:** 1955-1971: Federal Power Commission, informally collected by letter. 1972-1994: Energy Information Administration, Form FPC-14, "Annual Report for Importers and Exporters of Natural Gas." 1995 to 2000: Office of Fossil Energy, U.S. Department of Energy, *Natural Gas Imports and Exports*.

Table SR2. Summary of U.S. Natural Gas Imports, 1999-2000

Source	Volume		Average Btu	Revenue		Average Price							
	(million cubic feet)	Percent Change		(Cubic Foot)		(thousand dollars)		(dollars/ thousand cubic feet)		Percent Change	(dollars/ million Btu)		Percent Change
			1999	2000	1999	2000	1999	2000	1999		2000	1999	
Pipeline													
Canada	3,367,545	3,543,966	5.2	1,019	1,019	7,513,215	14,082,389	2.23	3.97	78.0	2.19	3.90	78.1
Mexico	54,530	11,601	-78.7	1,000	1,000	116,951	62,972	2.14	5.43	153.7	2.14	5.43	153.7
Total	3,422,075	3,555,567	3.9	1,019	1,019	7,630,167	14,145,360	2.23	3.98	78.0	2.19	3.90	78.1
LNG													
Algeria	75,763	46,947	-38.0	1,084	1,125	182,495	163,481	2.41	3.48	44.4	2.22	3.09	39.2
Australia	11,904	5,945	-50.1	1,160	1,173	32,197	19,314	2.70	3.25	20.4	2.33	2.77	18.9
Indonesia	0	2,760	-	0	1,118	0	11,014	0	3.99	-	0	3.57	-
Malaysia	2,576	0	-	1,097	0	6,079	0	2.36	0	-	2.15	0	-
Nigeria	0	12,654	-	0	1,111	0	55,238	0	4.37	-	0	3.93	-
Oman	0	9,998	-	0	1,173	0	33,618	0	3.36	-	0	2.86	-
Qatar	19,697	46,057	133.8	1,124	1,125	53,323	158,590	2.71	3.44	26.9	2.41	3.06	27.0
Trinidad	50,777	98,949	94.9	1,048	1,050	121,230	339,346	2.39	3.43	43.5	2.28	3.27	43.4
Un. Arab Emirates	2,713	2,725	0.4	1,128	1,118	8,220	9,620	3.03	3.53	16.5	2.69	3.16	17.5
Total	163,430	226,036	38.3	1,084	1,095	403,546	790,221	2.47	3.50	41.7	2.28	3.20	40.4
Grand Total	3,585,505	3,781,603	5.5	1,022	1,023	8,033,712	14,935,582	2.24	3.95	76.3	2.19	3.86	76.3

- Not Applicable.

Notes: Totals may not equal sum of components due to independent rounding. Geographic coverage is the continental United States including Alaska. Prices for LNG imports are reported as "landed," defined as received at the terminal or "tailgate," defined as after regasification at the terminal. Generally, prices for shipments received at Everett, MA, are reported as landed and at Lake Charles, LA as tailgate. For 1999 and 2000, the percentages of volumes associated with the type of price are: **Algeria**-1999, 56 percent landed, 44 percent tailgate; 2000, 40 percent landed, 60 percent tailgate. **Australia**-1999, 21 percent landed,

79 percent tailgate; 2000, 100 percent tailgate. **Indonesia**-2000, 100 percent tailgate. **Malaysia**-1999, 100 percent landed. **Nigeria**-2000, 41 percent landed, 59 percent tailgate. **Oman**-2000, 77 percent landed, 23 percent tailgate. **Qatar**-1999, 100 percent tailgate; 2000, 100 percent tailgate. **Trinidad**-1999, 100 percent landed; 2000, 95 percent landed, 5 percent tailgate. **United Arab Emirates**-1999, 100 percent landed; 2000, 100 percent tailgate.

Source: Office of Fossil Energy, U.S. Department of Energy, *Natural Gas Imports and Exports*.

Table SR3. Summary of U.S. Natural Gas Exports, 1999-2000

Source	Volume		Average Btu	Revenue		Average Price							
	(million cubic feet)	Percent Change		(Cubic Foot)		(thousand dollars)		(dollars/ thousand cubic feet)		Percent Change	(dollars/ million Btu)		Percent Change
			1999	2000	1999	2000	1999	2000	1999		2000	1999	
Pipeline													
Canada	38,508	72,586	88.5	1,019	1,019	90,579	265,810	2.35	3.66	55.74	2.31	3.59	55.4
Mexico	61,025	105,102	72.2	1,000	1,000	138,666	447,832	2.27	4.26	87.67	2.27	4.26	87.7
Total	99,533	177,688	78.5	1,004	1,004	229,245	713,642	2.30	4.02	74.35	2.29	3.98	73.8
LNG													
Japan	63,607	65,610	3.1	1,010	1,010	196,039	282,801	3.08	4.31	39.94	3.05	4.27	40.0
Mexico	275	418	52.0	1,000	1,000	1,910	2,434	6.95	5.82	-16.26	6.95	5.82	-16.3
Total	63,882	66,028	3.4	1,010	1,010	197,949	285,236	3.10	4.32	39.35	3.07	4.28	39.4
Grand Total	163,415	243,716	49.1	1,006	1,006	427,194	998,878	2.61	4.10	57.09	2.60	4.07	56.5

Notes: Totals may not equal sum of components due to independent rounding. Geographic coverage is the continental United States including Alaska. The price of LNG exports to Japan is the "landed" price, defined as received at the

terminal in Japan.

Source: Office of Fossil Energy, U.S. Department of Energy, *Natural Gas Imports and Exports*.

Table SR4. Historical Summary of U.S. Natural Gas Imports, 1955-2000
(Volumes in Million Cubic Feet; Average Prices in Dollars per Thousand Cubic Feet)

Year	Imports From									Total Imports ^a	Average Price	
	Pipeline		LNG									
	Canada	Mexico	Algeria	Australia	Qatar	Nigeria	Trinidad	Un. Arab Emirates	Others			
1955	10,881	7	0	0	0	0	0	0	0	0	10,888	NA
1956	10,374	6	0	0	0	0	0	0	0	0	10,380	NA
1957	20,971	16,970	0	0	0	0	0	0	0	0	37,941	NA
1958	89,586	46,211	0	0	0	0	0	0	0	0	135,797	NA
1959	83,061	50,929	0	0	0	0	0	0	0	0	133,990	NA
1960	108,657	46,989	0	0	0	0	0	0	0	0	155,646	NA
1961	167,104	51,756	0	0	0	0	0	0	0	0	218,860	NA
1962	350,438	51,096	0	0	0	0	0	0	0	0	401,534	NA
1963	356,455	49,749	0	0	0	0	0	0	0	0	406,204	NA
1964	390,721	52,605	0	0	0	0	0	0	0	0	443,326	NA
1965	404,686	51,708	0	0	0	0	0	0	0	0	456,394	NA
1966	430,189	49,591	0	0	0	0	0	0	0	0	479,780	NA
1967	513,255	50,971	0	0	0	0	0	0	0	0	564,226	NA
1968	604,462	47,423	0	0	0	0	0	0	0	0	651,885	NA
1969	680,106	46,845	0	0	0	0	0	0	0	0	726,951	NA
1970	778,687	41,336	757	0	0	0	0	0	0	0	820,780	NA
1971	910,926	20,689	1,433	0	0	0	0	0	0	^b 1,500	934,548	NA
1972	1,009,093	8,140	2,032	0	0	0	0	0	0	^b 230	1,019,496	0.31
1973	1,027,216	1,632	3,388	0	0	0	0	0	0	^b 667	1,032,901	0.35
1974	959,063	222	0	0	0	0	0	0	0	0	959,284	0.55
1975	948,115	0	4,893	0	0	0	0	0	0	0	953,008	1.21
1976	953,613	0	10,155	0	0	0	0	0	0	0	963,768	1.72
1977	996,723	2,384	11,324	0	0	0	0	0	0	^b 572	1,011,002	1.98
1978	881,123	0	84,422	0	0	0	0	0	0	0	965,545	2.13
1979	1,000,775	0	252,608	0	0	0	0	0	0	0	1,253,383	2.49
1980	796,507	102,410	85,850	0	0	0	0	0	0	0	984,767	4.28
1981	762,107	105,013	36,824	0	0	0	0	0	0	^b 6	903,949	4.88
1982	783,407	94,794	55,136	0	0	0	0	0	0	0	933,336	5.03
1983	711,923	75,361	131,124	0	0	0	0	0	0	0	918,407	4.78
1984	755,368	51,502	36,191	0	0	0	0	0	0	0	843,060	4.08
1985	926,056	0	23,659	0	0	0	0	0	0	0	949,715	3.21
1986	748,780	0	0	0	0	0	0	0	0	^c 1,669	750,449	2.43
1987	992,532	0	0	0	0	0	0	0	0	0	992,532	1.95
1988	1,276,322	0	17,490	0	0	0	0	0	0	0	1,293,812	1.84
1989	1,339,357	0	42,163	0	0	0	0	0	0	0	1,381,520	1.82
1990	1,448,065	0	84,193	0	0	0	0	0	0	0	1,532,259	1.94
1991	1,709,716	0	63,596	0	0	0	0	0	0	0	1,773,313	1.83
1992	2,094,387	0	43,116	0	0	0	0	0	0	0	2,137,504	1.85
1993	2,266,751	1,678	81,685	0	0	0	0	0	0	0	2,350,115	2.03
1994	2,566,049	7,013	50,778	0	0	0	0	0	0	0	2,623,839	1.87
1995	2,816,408	6,722	17,918	0	0	0	0	0	0	0	2,841,048	1.49
1996	2,883,277	13,862	35,325	0	0	0	0	4,949	0	0	2,937,413	1.97
1997	2,899,152	17,243	65,675	9,686	0	0	0	2,417	0	0	2,994,173	2.17
1998	3,052,073	14,532	68,567	11,634	0	0	0	5,252	0	0	3,152,058	1.97
1999	3,367,545	54,530	75,763	11,904	19,697	0	50,777	2,713	0	^d 2,576	3,585,505	2.24
2000	3,543,966	11,601	46,947	5,945	46,057	12,654	98,949	2,725	^e 12,758	^{ce}	3,781,603	3.95

^a Volumes reported for 1966 through 1997 are on a pressure base of 14.73 pounds per square inch absolute and 60 degrees Fahrenheit. Volumes for 1955 through 1965 are as reported.

^b Received from Canada.

^c Received from Indonesia.

^d Received from Malaysia.

^e Received from Oman.

^{NA} Not Available.

Notes: Totals may not equal sum of components due to independent rounding. Geographic coverage is the continental United States including Alaska. Prices for LNG imports are reported as "landed," defined as received at the terminal or "tailgate," defined as after regasification at the terminal. Generally, prices for shipments received at Everett, MA are reported as landed and at Lake Charles, LA as tailgate. For 1999 and 2000, the

percentages of volumes associated with the type of price are: **Algeria**-1999, 56 percent landed, 44 percent tailgate; 2000, 40 percent landed, 60 percent tailgate. **Australia**-1999, 21 percent landed, 79 percent tailgate; 2000, 100 percent tailgate. **Indonesia**-2000, 100 percent tailgate. **Malaysia**-1999, 100 percent landed. **Nigeria**-2000, 41 percent landed, 59 percent tailgate. **Oman**-2000, 77 percent landed, 23 percent tailgate. **Qatar**-1999, 100 percent tailgate; 2000, 100 percent tailgate. **Trinidad**-1999, 100 percent landed; 2000, 95 percent landed, 5 percent tailgate. **United Arab Emirates**-1999, 100 percent landed; 2000, 100 percent tailgate.

Sources: 1955-1971: Federal Power Commission, informally collected by letter. 1972-1994: Energy Information Administration, Form FPC-14, "Annual Report for Importers and Exporters of Natural Gas." 1995 to 2000: Office of Fossil Energy, U.S. Department of Energy, *Natural Gas Imports and Exports*.

Table SR5. Historical Summary of U.S. Natural Gas Exports, 1955-2000

(Volumes in Million Cubic Feet; Average Prices in Dollars per Thousand Cubic Feet)

Year	Exports To				Total Exports	Average Price
	Pipeline		LNG			
	Canada	Mexico	Japan	Mexico		
1955.....	11,467	19,562	0	0	31,029	NA
1956.....	16,819	19,144	0	0	35,963	NA
1957.....	30,867	10,788	0	0	41,655	NA
1958.....	32,129	6,590	0	0	38,719	NA
1959.....	11,739	6,674	0	0	18,413	NA
1960.....	5,759	5,573	0	0	11,332	NA
1961.....	5,577	5,170	0	0	10,747	NA
1962.....	5,574	10,240	0	0	15,814	NA
1963.....	6,879	10,078	0	0	16,957	NA
1964.....	9,763	9,840	0	0	19,603	NA
1965.....	17,979	8,153	0	0	26,132	NA
1966.....	20,281	4,358	0	0	24,639	NA
1967.....	70,456	11,158	0	0	81,614	NA
1968.....	81,647	12,098	0	0	93,745	NA
1969.....	34,931	13,391	2,982	0	51,304	NA
1970.....	10,878	14,678	44,257	0	69,813	NA
1971.....	14,349	15,632	50,231	0	80,212	NA
1972.....	15,553	14,579	47,882	0	78,013	0.51
1973.....	14,824	13,999	48,346	0	77,169	0.54
1974.....	13,263	13,268	50,258	0	76,789	0.72
1975.....	10,219	9,454	53,002	0	72,675	1.25
1976.....	7,506	7,425	49,779	0	64,711	1.55
1977.....	31	3,940	51,655	0	55,626	1.92
1978.....	66	4,033	48,434	0	52,532	2.13
1979.....	76	4,308	51,289	0	55,673	2.29
1980.....	113	3,886	44,732	0	48,731	4.70
1981.....	106	3,337	55,929	0	59,372	5.90
1982.....	162	1,705	49,861	0	51,728	5.81
1983.....	136	1,646	52,857	0	54,639	5.10
1984.....	127	1,786	52,840	0	54,753	4.92
1985.....	178	2,207	52,883	0	55,268	4.77
1986.....	9,203	1,896	50,172	0	61,271	2.81
1987.....	3,297	2,125	48,599	0	54,020	3.07
1988.....	19,738	2,327	51,573	0	73,638	2.74
1989.....	38,443	17,004	51,424	0	106,871	2.51
1990.....	17,359	15,659	52,546	0	85,565	3.10
1991.....	14,791	60,448	54,005	0	129,244	2.59
1992.....	67,777	95,973	52,532	0	216,282	2.25
1993.....	44,518	39,676	55,989	0	140,183	2.59
1994.....	52,556	46,500	62,682	0	161,738	2.50
1995.....	27,554	61,283	65,283	0	154,119	2.39
1996.....	51,905	33,840	67,648	0	153,393	2.97
1997.....	56,447	38,372	62,187	0	157,006	3.02
1998.....	39,891	53,133	65,951	33	159,007	2.45
1999.....	38,508	61,025	63,607	275	163,415	2.61
2000.....	72,586	105,102	65,610	418	243,716	4.10

^{NA} Not Available.

Notes: Totals may not equal sum of components due to independent rounding. Geographic coverage is the continental United States including Alaska. The price of LNG exports to Japan is the "landed" price, defined as received at the terminal in Japan. LNG exports to Mexico are shipped by truck.

Sources: 1955-1971: Federal Power Commission, informally collected by letter. 1972-1994: Energy Information Administration, Form FPC-14, "Annual Report for Importers and Exporters of Natural Gas." 1995 to 2000: Office of Fossil Energy, U.S. Department of Energy, *Natural Gas Imports and Exports*.

Table SR6. U.S. Natural Gas Imports by Point of Entry, 1999-2000
(Volumes in Million Cubic Feet; Average Prices in Dollars per Thousand Cubic Feet)

Year and Month	Canada (Pipeline)											
	Pacific Northwest		West		Midwest							
	Sumas, WA		Eastport, ID		Babb, MT		Detroit, MI		Harve, MT		International Falls, MN	
	Volume	Average Price	Volume	Average Price	Volume	Average Price	Volume	Average Price	Volume	Average Price	Volume	Average Price
1999												
January	37,355	2.51	71,464	1.85	661	1.85	817	2.64	0	-	597	2.06
February	36,836	1.86	65,921	1.71	390	1.70	761	2.58	0	-	524	1.96
March	41,238	1.66	63,109	1.66	503	1.67	532	2.60	0	-	545	1.88
April	31,465	1.61	66,166	1.62	281	1.73	665	2.39	0	-	366	2.01
May	34,468	2.02	63,572	1.93	526	2.09	506	2.43	0	-	24	2.18
June	26,743	2.01	58,471	1.92	237	2.11	485	2.46	0	-	24	2.05
July	32,751	2.04	63,904	1.97	315	2.12	546	2.31	0	-	390	2.33
August	35,655	2.22	64,008	2.06	173	2.14	634	2.47	0	-	382	2.44
September	34,088	2.46	66,637	2.38	266	2.46	392	2.52	0	-	432	2.74
October	34,353	2.44	69,546	2.31	237	2.37	699	2.48	0	-	470	2.64
November	34,188	2.79	71,290	2.71	28	2.02	765	2.45	0	-	549	3.03
December	36,496	2.37	76,257	2.26	224	2.42	869	2.66	0	-	554	2.33
Total	415,636	2.17	800,345	2.04	3,841	2.00	7,671	2.51	0	-	4,857	2.33
2000												
January	31,040	2.37	76,689	2.23	27	2.14	891	3.00	0	-	573	2.29
February	29,530	2.42	69,231	2.26	12	2.09	563	3.03	0	-	541	2.36
March	29,429	2.39	68,259	2.37	0	2.96	608	2.81	0	-	542	2.47
April	23,190	2.78	60,473	2.69	0	2.14	514	3.04	0	-	437	2.76
May	27,638	2.85	65,603	2.80	0	3.47	494	3.08	0	-	430	2.91
June	29,538	3.67	64,973	3.30	0	3.44	475	3.18	0	-	388	3.70
July	24,908	3.92	72,679	3.75	19	3.73	581	3.37	600	3.19	14	4.43
August	31,107	3.11	65,764	3.51	18	3.30	660	3.88	247	3.25	20	3.63
September	26,407	3.57	70,040	3.84	18	3.62	434	3.75	150	4.50	21	4.53
October	27,447	4.79	71,639	4.65	16	4.62	338	3.74	312	4.50	24	5.21
November	31,467	4.96	68,999	5.14	16	4.70	0	-	0	-	0	-
December	36,291	12.25	76,003	8.35	169	7.65	615	8.96	0	-	32	6.42
Total	347,992	4.28	830,351	3.79	295	5.83	6,171	3.82	1,309	3.66	3,022	2.77

See footnotes at end of table.

Table SR6. U.S. Natural Gas Imports by Point of Entry, 1999-2000

(Volumes in Million Cubic Feet; Average Prices in Dollars per Thousand Cubic Feet) —
Continued

Year and Month	Canada (Pipeline)											
	Midwest											
	Marysville, MI		Noyes, MN		Port of del Bonita, MT		Port of Morgan, MT		Portal, ND		Sherwood, ND	
	Volume	Average Price	Volume	Average Price	Volume	Average Price	Volume	Average Price	Volume	Average Price	Volume	Average Price
1999												
January	135	2.06	45,408	1.95	6	2.29	68,058	1.67	384	1.76	0	-
February	0	-	37,256	1.97	6	2.18	61,468	1.62	347	1.71	0	-
March	0	-	41,248	1.77	7	2.09	65,715	1.47	380	1.89	0	-
April	0	-	36,166	1.97	6	2.34	57,471	1.61	313	1.75	0	-
May	0	-	40,349	2.31	8	2.54	67,893	2.02	324	1.87	0	-
June	0	-	38,061	2.23	0	-	70,398	1.93	312	1.95	0	-
July	0	-	48,218	2.19	5	2.57	63,842	2.02	322	1.95	0	-
August	0	-	47,564	2.48	11	3.02	68,562	2.26	322	1.95	0	-
September	0	-	44,496	2.75	11	2.92	65,095	2.53	311	2.12	0	-
October	0	-	43,135	2.54	11	3.27	66,870	2.33	322	2.08	0	-
November	0	-	41,055	2.91	9	2.65	62,770	2.77	34	1.22	0	-
December	0	-	43,910	2.28	9	2.53	72,285	2.06	45	1.23	0	-
Total	135	2.06	506,866	2.29	89	2.66	790,427	2.03	3,416	1.88	0	-
2000												
January	0	-	47,740	2.42	10	1.75	70,380	2.19	40	1.29	0	-
February	0	-	40,514	2.64	9	2.87	66,688	2.37	45	1.22	0	-
March	0	-	38,647	2.68	8	3.24	67,800	2.35	49	1.15	0	-
April	0	-	35,814	2.93	9	3.44	69,674	2.61	29	1.16	0	-
May	0	-	37,117	3.10	5	3.92	60,858	2.85	43	1.99	0	-
June	0	-	38,070	4.23	10	4.62	60,701	3.86	41	1.95	131	3.75
July	0	-	39,429	3.86	10	4.13	67,297	3.92	45	2.00	0	-
August	0	-	41,745	3.70	1	4.12	69,225	3.46	41	1.99	800	3.64
September	0	-	35,856	4.32	10	5.71	69,296	4.16	40	1.95	3,820	4.65
October	0	-	38,714	4.45	11	5.76	62,215	6.89	42	1.94	11,449	4.75
November	0	-	34,452	4.61	11	6.27	60,067	4.68	26	1.91	18,474	5.31
December	0	-	41,264	6.26	11	6.92	60,382	6.01	26	3.74	25,574	7.67
Total	0	-	469,361	3.75	107	4.52	784,583	3.73	469	1.80	60,249	6.14

See footnotes at end of table.

Table SR6. U.S. Natural Gas Imports by Point of Entry, 1999-2000

(Volumes in Million Cubic Feet; Average Prices in Dollars per Thousand Cubic Feet) —
Continued

Year and Month	Canada (Pipeline)											
	Midwest								Northeast			
	St Clair, MI		Warroad, MN		Whitlash, MT		Total		Calais, ME		Champlain, NY	
	Volume	Average Price	Volume	Average Price	Volume	Average Price	Volume	Average Price	Volume	Average Price	Volume	Average Price
1999												
January	2,907	1.97	96	1.83	913	1.78	119,982	1.79	0	-	1,478	3.67
February	425	1.96	72	1.75	897	1.69	102,146	1.76	0	-	1,338	3.61
March	471	1.77	58	1.69	976	1.64	110,435	1.60	0	-	1,456	3.60
April	1,311	1.96	13	1.69	893	1.82	97,485	1.76	0	-	1,413	3.66
May	2,714	2.46	13	2.18	944	1.99	113,301	2.14	0	-	1,432	3.66
June	2,580	2.33	11	2.05	909	2.05	113,017	2.04	0	-	1,392	3.68
July	1,711	2.37	11	2.12	944	2.03	116,304	2.10	0	-	1,495	3.68
August	4,728	2.75	12	2.43	974	2.33	123,362	2.37	0	-	1,485	3.67
September	6,514	3.00	12	2.82	999	2.21	118,528	2.63	0	-	1,409	3.67
October	4,686	2.67	14	2.47	1,198	2.58	117,642	2.42	0	-	1,453	3.67
November	4,008	3.20	43	3.05	1,516	2.17	110,777	2.83	0	-	1,379	3.81
December	1,333	2.28	57	2.18	1,604	2.07	120,890	2.15	0	-	1,441	3.82
Total	33,388	2.62	412	2.06	12,767	2.05	1,363,869	2.14	0	-	17,171	3.68
2000												
January	1,221	2.44	67	2.36	1,589	2.11	122,538	2.29	1,028	3.30	1,504	3.82
February	592	2.67	61	2.61	1,177	2.21	110,202	2.47	4,175	2.76	1,467	3.82
March	631	2.75	45	2.57	1,279	3.58	109,609	2.49	8,743	2.65	1,503	3.81
April	2,386	3.06	15	2.79	1,262	2.66	110,140	2.73	9,825	2.94	1,340	3.82
May	1,210	3.45	13	2.98	1,203	3.04	101,372	2.95	10,492	3.38	1,453	3.81
June	1,700	4.18	12	4.13	1,082	3.58	102,610	3.99	11,015	4.37	1,455	3.82
July	1,202	4.52	734	3.98	1,037	3.19	110,966	3.89	12,260	4.24	1,454	3.82
August	1,526	3.69	376	3.36	1,005	3.16	115,667	3.55	13,599	4.08	1,525	3.82
September	621	4.87	637	3.71	1,060	4.21	111,963	4.23	12,686	4.95	1,493	3.82
October	1,096	5.64	815	4.43	1,042	4.76	116,075	5.80	13,391	5.44	1,188	3.82
November	1,282	4.78	884	3.98	995	2.83	116,206	4.74	13,037	5.09	1,510	4.01
December	3,730	6.76	919	4.20	1,002	2.22	133,724	6.40	13,271	7.19	1,543	4.02
Total	17,198	4.45	4,576	3.95	13,733	3.09	1,361,072	3.84	123,521	4.50	17,436	3.86

See footnotes at end of table.

Table SR6. U.S. Natural Gas Imports by Point of Entry, 1999-2000

(Volumes in Million Cubic Feet; Average Prices in Dollars per Thousand Cubic Feet) —
Continued

Year and Month	Canada (Pipeline)											
	Northeast											
	Grand Island, NY		Highgate Springs, VT		Massena, NY		Niagara Falls, NY		North Troy, VT		Pittsburg, NH	
	Volume	Average Price	Volume	Average Price	Volume	Average Price	Volume	Average Price	Volume	Average Price	Volume	Average Price
1999												
January	2,728	2.81	1,293	2.17	1,038	2.60	30,842	2.43	775	1.76	189	2.55
February	2,678	2.69	1,056	2.20	854	2.55	32,705	2.39	700	2.56	381	2.23
March	3,521	2.62	984	2.22	893	2.40	36,350	2.21	775	2.53	812	2.14
April	2,965	2.59	625	2.85	599	2.48	27,900	2.26	0	-	1,714	2.22
May	2,406	3.28	372	3.47	397	2.83	28,439	2.53	0	-	1,919	2.50
June	1,976	3.30	297	3.81	312	2.76	29,423	2.50	0	-	1,560	2.48
July	2,477	3.07	309	3.77	313	2.85	30,331	2.52	0	-	2,651	2.48
August	3,533	3.24	410	3.55	308	3.03	30,724	2.77	0	-	1,687	2.65
September	1,834	3.60	365	4.10	481	3.07	29,156	2.91	0	-	2,428	2.90
October	3,013	3.39	624	3.52	491	3.15	30,642	2.79	0	-	2,650	2.80
November	3,321	3.34	741	3.74	666	3.50	31,222	3.03	0	-	2,867	3.07
December	2,688	3.20	1,065	2.92	906	2.98	34,781	2.62	0	-	3,962	2.47
Total	33,140	3.07	8,141	2.91	7,258	2.81	372,515	2.58	2,250	2.27	22,820	2.61
2000												
January	5,776	2.78	1,500	3.27	1,055	3.14	34,806	2.71	0	-	4,875	3.20
February	4,478	3.01	1,392	3.25	965	3.19	35,915	2.97	0	-	4,437	3.20
March	3,980	3.01	914	3.26	803	3.18	36,967	3.03	0	-	3,503	2.95
April	3,706	3.20	814	3.46	671	3.43	33,194	3.15	0	-	2,583	2.96
May	2,796	3.59	533	4.03	451	3.75	32,912	3.44	0	-	1,912	3.00
June	2,910	4.72	493	5.00	367	4.78	34,662	4.25	0	-	1,945	3.28
July	4,007	4.40	460	5.15	279	4.82	36,668	4.23	0	-	2,049	3.94
August	3,395	4.30	454	5.06	357	4.21	32,237	4.04	0	-	1,973	3.75
September	2,880	4.71	551	5.19	315	4.79	29,284	4.47	0	-	2,065	4.44
October	4,180	5.29	738	5.76	429	5.30	32,728	5.06	0	-	2,885	4.37
November	4,979	5.01	949	5.17	665	5.44	38,280	5.03	0	-	4,765	5.16
December	5,924	6.38	1,184	5.27	952	6.47	43,364	6.35	0	-	5,298	6.45
Total	49,012	4.24	9,980	4.28	7,309	4.25	421,016	4.10	0	-	38,289	4.07

See footnotes at end of table.

Table SR6. U.S. Natural Gas Imports by Point of Entry, 1999-2000

(Volumes in Million Cubic Feet; Average Prices in Dollars per Thousand Cubic Feet) —
Continued

Year and Month	Canada (Pipeline)						Mexico (Pipeline)					
	Northeast				Total		Texas					
	Waddington, NY		Total		Volume	Average Price	Alamo, TX		Hidalgo, TX		McAllen, TX	
	Volume	Average Price	Volume	Average Price			Volume	Average Price	Volume	Average Price	Volume	Average Price
1999												
January	25,689	2.17	64,032	2.36	292,833	2.02	0	-	4,891	1.74	0	-
February	24,511	2.13	64,223	2.33	269,126	1.90	0	-	4,398	1.69	0	-
March	28,196	2.03	72,987	2.19	287,769	1.77	0	-	751	1.60	0	-
April	26,733	2.14	61,949	2.27	257,065	1.83	0	-	4,193	2.02	0	-
May	28,913	2.53	63,878	2.59	275,219	2.18	0	-	6,844	1.94	0	-
June	27,049	2.46	62,009	2.54	260,240	2.13	0	-	4,978	2.12	0	-
July	27,889	2.51	65,465	2.57	278,424	2.17	0	-	3,877	2.21	0	-
August	27,545	2.83	65,692	2.85	288,717	2.39	0	-	6,028	2.61	0	-
September	25,872	3.10	61,545	3.04	280,798	2.64	982	2.40	3,661	2.39	0	-
October	26,763	2.89	65,636	2.89	287,177	2.50	3,429	2.53	739	2.29	0	-
November	28,063	3.02	68,259	3.07	284,514	2.85	5,159	2.33	1,304	2.22	0	-
December	27,177	2.60	72,020	2.66	305,663	2.32	3,081	2.07	215	2.22	0	-
Total	324,400	2.54	787,695	2.61	3,367,545	2.23	12,651	2.33	41,879	2.09	0	-
2000												
January	29,371	2.82	79,915	2.83	310,181	2.42	2,557	2.29	353	2.37	0	-
February	27,430	3.07	80,259	3.03	289,222	2.57	730	2.50	0	-	0	-
March	27,761	3.07	84,173	3.01	291,469	2.60	316	2.60	0	-	0	-
April	27,945	3.26	80,077	3.17	273,881	2.85	475	2.97	281	2.96	0	-
May	29,455	3.48	80,003	3.45	274,616	3.05	0	-	0	-	0	-
June	28,561	4.41	81,408	4.32	278,529	3.89	0	-	0	-	0	-
July	27,623	4.53	84,800	4.33	293,353	3.99	0	-	27	4.01	0	-
August	29,277	4.15	82,817	4.09	295,355	3.65	0	-	10	4.64	0	-
September	25,237	4.81	74,511	4.67	282,921	4.19	0	-	209	5.00	0	-
October	25,323	5.49	80,862	5.23	296,022	5.27	1,035	5.19	80	4.91	0	-
November	28,481	5.01	92,665	5.03	309,337	4.94	1,116	5.60	115	5.79	0	-
December	31,525	6.66	103,061	6.51	349,079	7.47	2,161	8.74	1,018	8.17	1,118	9.22
Total	337,989	4.24	1,004,552	4.20	3,543,966	3.97	8,390	4.82	2,093	5.85	1,118	9.22

See footnotes at end of table.

Table SR6. U.S. Natural Gas Imports by Point of Entry, 1999-2000

(Volumes in Million Cubic Feet; Average Prices in Dollars per Thousand Cubic Feet) — Continued

Year and Month	Mexico (Pipeline)		LNG						Grand Total	
	Total		Midwest		Northeast		Total		Volume	Average Price
	Volume	Average Price	Lake Charles, LA		Everett, MA		Volume	Average Price		
			Volume	Average Price	Volume	Average Price				
1999										
January	4,891	1.74	2,551	2.17	10,515	2.48	13,066	2.42	310,790	2.03
February	4,398	1.69	5,042	2.46	7,846	2.96	12,888	2.76	286,412	1.93
March	751	1.60	2,549	2.17	10,541	2.51	13,090	2.44	301,610	1.80
April	4,193	2.02	5,069	2.04	5,060	2.44	10,129	2.24	271,387	1.85
May	6,844	1.94	2,480	2.17	6,911	1.92	9,391	1.99	291,454	2.17
June	4,978	2.12	7,259	2.14	6,619	2.08	13,878	2.11	279,096	2.13
July	3,877	2.21	7,522	2.31	6,599	2.11	14,121	2.22	296,422	2.18
August	6,028	2.61	7,432	2.30	9,904	2.33	17,336	2.32	312,081	2.39
September	4,643	2.39	10,104	2.60	6,869	2.56	16,973	2.58	302,414	2.63
October	4,168	2.49	4,924	2.29	8,368	2.64	13,292	2.51	304,637	2.50
November	6,463	2.31	5,087	3.23	9,088	2.85	14,175	2.98	305,152	2.85
December	3,296	2.08	7,343	2.83	7,748	2.84	15,091	2.83	324,050	2.34
Total	54,530	2.14	67,362	2.43	96,068	2.49	163,430	2.47	3,585,505	2.24
2000										
January	2,911	2.30	2,505	2.25	10,300	3.00	12,806	2.85	325,897	2.44
February	730	2.50	0	-	10,155	3.33	10,155	3.33	300,107	2.60
March	316	2.60	5,619	2.55	9,193	2.90	14,812	2.77	306,596	2.61
April	756	2.97	12,742	2.81	6,637	3.07	19,378	2.90	294,016	2.86
May	0	-	5,437	3.14	7,739	3.01	13,176	3.06	287,793	3.05
June	0	-	14,581	3.53	2,936	3.30	17,517	3.49	296,046	3.87
July	27	4.01	18,275	3.69	10,631	3.21	28,906	3.51	322,285	3.94
August	10	4.64	13,943	3.28	9,000	3.31	22,943	3.29	318,308	3.62
September	209	5.00	16,849	3.91	4,864	2.98	21,713	3.70	304,843	4.15
October	1,115	5.17	17,869	4.38	9,521	3.16	27,390	3.96	324,527	5.16
November	1,231	5.61	12,242	3.48	6,950	3.85	19,192	3.61	329,759	4.86
December	4,297	8.73	7,135	5.00	10,913	4.63	18,049	4.77	371,425	7.35
Total	11,601	5.43	127,198	3.61	98,838	3.34	226,036	3.50	3,781,603	3.95

- Not Applicable.

^a Less than one million cubic feet. Volumes for March, April, May, and June are 80 Mcf, 58 Mcf, 32 Mcf, and 18 Mcf, respectively.

Notes: Totals may not equal sum of components due to independent rounding. Geographic coverage is the continental United States including Alaska. Prices for LNG imports are reported as "landed," defined as received at the terminal or "tailgate," defined as after regasification at the terminal. Generally, prices for shipments received at Everett, MA are reported as landed and at Lake Charles, LA as tailgate. For 1999 and 2000, the percentages of volumes associated with the type of price are: **Algeria**-1999, 56 percent landed, 44

percent tailgate; 2000, 40 percent landed, 60 percent tailgate. **Australia**-1999, 21 percent landed, 79 percent tailgate; 2000, 100 percent tailgate. **Indonesia**-2000, 100 percent tailgate. **Malaysia**-1999, 100 percent landed. **Nigeria**-2000, 41 percent landed, 59 percent tailgate. **Oman**-2000, 77 percent landed, 23 percent tailgate. **Qatar**-1999, 100 percent tailgate; 2000, 100 percent tailgate. **Trinidad**-1999, 100 percent landed; 2000, 95 percent landed, 5 percent tailgate. **United Arab Emirates**-1999, 100 percent landed; 2000, 100 percent tailgate.

Sources: Office of Fossil Energy, U.S. Department of Energy, *Natural Gas Imports and Exports*.

Table SR7. Summary of U.S. Natural Gas Imports, 1978-2000

(Volumes in Million Cubic Feet; Average Prices in Dollars per Thousand Cubic Feet)

Year And Month	Pipeline				Total Pipeline	
	Canada		Mexico		Volume	Average Price
	Volume	Average Price	Volume	Average Price		
1978 Total	881,123	2.19	0	-	881,123	2.19
1979 Total	1,000,775	2.61	0	-	1,000,775	2.61
1980 Total	796,507	4.32	102,410	4.41	898,917	4.33
1981 Total	762,107	4.83	105,013	5.01	867,120	4.85
1982 Total	783,407	4.97	94,794	5.02	878,200	4.98
1983 Total	711,923	4.49	75,361	4.70	787,284	4.51
1984 Total	755,368	4.01	51,502	4.49	806,870	4.04
1985 Total	926,056	3.17	0	-	926,056	3.17
1986 Total	748,780	2.42	0	-	748,780	2.42
1987 Total	992,532	1.95	0	-	992,532	1.95
1988 Total	1,276,322	1.83	0	-	1,276,322	1.83
1989 Total	1,339,357	1.81	0	-	1,339,357	1.81
1990 Total	1,448,065	1.91	0	-	1,448,065	1.91
1991 Total	1,709,716	1.81	0	-	1,709,716	1.81
1992 Total	2,094,387	1.84	0	-	2,094,387	1.84
1993 Total	2,266,751	2.02	1,678	1.94	2,268,429	2.02
1994 Total	2,566,049	1.86	7,013	1.99	2,572,377	1.86
1995 Total	2,816,408	1.48	6,722	1.53	2,823,130	1.48
1996 Total	2,883,277	1.96	13,862	2.25	2,897,138	1.96
1997 Total	2,899,152	2.15	17,243	2.31	2,916,394	2.15
1998 Total	3,052,073	1.95	14,532	2.03	3,066,605	1.95
1999						
January	292,833	2.02	4,891	1.74	297,724	2.02
February.....	269,126	1.90	4,398	1.69	273,524	1.90
March.....	287,769	1.77	751	1.60	288,520	1.77
April	257,065	1.83	4,193	2.02	261,258	1.83
May.....	275,219	2.18	6,844	1.94	282,063	2.17
June.....	260,240	2.13	4,978	2.12	265,218	2.13
July	278,424	2.17	3,877	2.21	282,301	2.17
August.....	288,717	2.39	6,028	2.61	294,745	2.39
September.....	280,798	2.64	4,643	2.39	285,441	2.64
October	287,177	2.50	4,168	2.49	291,345	2.50
November.....	284,514	2.85	6,463	2.31	290,977	2.84
December.....	305,663	2.32	3,296	2.08	308,959	2.32
Total	3,367,545	2.23	54,530	2.14	3,422,075	2.23
2000						
January	310,181	2.42	2,911	2.30	313,092	2.42
February.....	289,222	2.57	730	2.50	289,953	2.57
March.....	291,469	2.60	316	2.60	291,785	2.60
April	273,881	2.85	756	2.97	274,637	2.85
May.....	274,616	3.05	0	-	274,616	3.05
June.....	278,529	3.89	0	-	278,529	3.89
July	293,353	3.99	27	4.01	293,379	3.99
August.....	295,355	3.65	10	4.64	295,365	3.65
September.....	282,921	4.19	209	5.00	283,131	4.19
October	296,022	5.27	1,115	5.17	297,137	5.27
November.....	309,337	4.94	1,231	5.61	310,567	4.94
December.....	349,079	7.47	4,297	8.73	353,376	7.48
Total	3,543,966	3.97	11,601	5.43	3,555,567	3.98

See footnotes at end of table.

Table SR7. Summary of U.S. Natural Gas Imports, 1978-2000

(Volumes in Million Cubic Feet; Average Prices in Dollars per Thousand Cubic Feet) –
Continued

Year And Month	LNG							
	Algeria		Australia		Nigeria		Qatar	
	Volume	Average Price	Volume	Average Price	Volume	Average Price	Volume	Average Price
1978 Total	84,422	1.53	0	-	0	-	0	-
1979 Total	252,608	2.03	0	-	0	-	0	-
1980 Total	85,850	3.77	0	-	0	-	0	-
1981 Total	36,824	5.54	0	-	0	-	0	-
1982 Total	55,136	5.82	0	-	0	-	0	-
1983 Total	131,124	6.41	0	-	0	-	0	-
1984 Total	36,191	4.90	0	-	0	-	0	-
1985 Total	23,659	4.60	0	-	0	-	0	-
1986 Total	0	-	0	-	0	-	0	-
1987 Total	0	-	0	-	0	-	0	-
1988 Total	17,490	2.71	0	-	0	-	0	-
1989 Total	42,163	2.22	0	-	0	-	0	-
1990 Total	84,193	2.47	0	-	0	-	0	-
1991 Total	63,596	2.36	0	-	0	-	0	-
1992 Total	43,116	2.54	0	-	0	-	0	-
1993 Total	81,685	2.20	0	-	0	-	0	-
1994 Total	50,778	2.28	0	-	0	-	0	-
1995 Total	17,918	2.30	0	-	0	-	0	-
1996 Total	35,325	2.70	0	-	0	-	0	-
1997 Total	65,675	2.67	9,686	2.92	0	-	0	-
1998 Total	68,567	2.51	11,634	3.30	0	-	0	-
1999								
January	13,066	2.42	0	-	0	-	0	-
February	7,684	2.51	2,557	3.55	0	-	2,647	2.72
March	13,090	2.44	0	-	0	-	0	-
April	7,637	2.35	0	-	0	-	2,492	1.91
May	3,898	2.13	0	-	0	-	0	-
June	2,528	2.17	2,314	2.33	0	-	2,417	1.94
July	5,134	2.18	0	-	0	-	2,388	2.61
August	2,554	2.17	2,302	2.37	0	-	0	-
September	7,593	2.49	0	-	0	-	4,987	2.74
October	5,118	2.48	2,309	2.42	0	-	0	-
November	2,440	2.85	0	-	0	-	2,374	3.45
December	5,021	2.51	2,422	2.76	0	-	2,392	3.59
Total	75,763	2.41	11,904	2.70	0	-	19,697	2.71
2000								
January	5,026	2.61	0	-	0	-	0	-
February	4,987	3.76	0	-	0	-	0	-
March	3,990	2.49	0	-	0	-	2,428	2.79
April	2,566	2.72	2,274	3.21	0	-	7,254	2.71
May	2,453	3.13	0	-	0	-	0	-
June	2,529	3.53	0	-	2,488	4.14	2,385	2.76
July	2,562	3.40	2,285	3.26	2,496	4.86	4,793	3.97
August	2,370	3.87	0	-	2,510	3.56	7,167	3.15
September	2,556	4.11	1,270	3.28	2,658	3.52	7,625	3.97
October	7,570	3.46	0	-	2,503	5.80	7,165	4.14
November	2,552	3.98	116	3.44	0	-	7,241	3.32
December	7,786	4.29	0	-	0	-	0	-
Total	46,947	3.48	5,945	3.25	12,654	4.37	46,057	3.44

See footnotes at end of table.

Table SR7. Summary of U.S. Natural Gas Imports, 1978-2000

(Volumes in Million Cubic Feet; Average Prices in Dollars per Thousand Cubic Feet) –
Continued

Year And Month	LNG						Total LNG		Grand Total	
	Trinidad		United Arab Emirates		Other		Volume	Average Price	Volume	Average Price
	Volume	Average Price	Volume	Average Price	Volume	Average Price				
1978 Total	0	-	0	-	0	-	84,422	1.53	965,545	2.13
1979 Total	0	-	0	-	0	-	252,608	2.03	1,253,383	2.49
1980 Total	0	-	0	-	0	-	85,850	3.77	984,767	4.28
1981 Total	0	-	0	-	6	6.63	36,830	5.54	903,949	4.88
1982 Total	0	-	0	-	0	-	55,136	5.82	933,336	5.03
1983 Total	0	-	0	-	0	-	131,124	6.41	918,407	4.78
1984 Total	0	-	0	-	0	-	36,191	4.90	843,060	4.08
1985 Total	0	-	0	-	0	-	23,659	4.60	949,715	3.21
1986 Total	0	-	0	-	^a 1,669	4.62	1,669	4.62	750,449	2.43
1987 Total	0	-	0	-	0	-	0	-	992,532	1.95
1988 Total	0	-	0	-	0	-	17,490	2.71	1,293,812	1.84
1989 Total	0	-	0	-	0	-	42,163	2.22	1,381,520	1.82
1990 Total	0	-	0	-	0	-	84,193	2.47	1,532,259	1.94
1991 Total	0	-	0	-	0	-	63,596	2.36	1,773,313	1.83
1992 Total	0	-	0	-	0	-	43,116	2.54	2,137,504	1.85
1993 Total	0	-	0	-	0	-	81,685	2.20	2,350,115	2.03
1994 Total	0	-	0	-	0	-	50,778	2.28	2,623,839	1.87
1995 Total	0	-	0	-	0	-	17,918	2.30	2,841,048	1.49
1996 Total	0	-	4,949	3.46	0	-	40,274	2.79	2,937,413	1.97
1997 Total	0	-	2,417	3.74	0	-	77,778	2.73	2,994,173	2.17
1998 Total	0	-	5,252	2.63	0	-	85,453	2.62	3,152,058	1.97
1999										
January.....	0	-	0	-	0	-	13,066	2.42	310,790	2.03
February.....	0	-	0	-	0	-	12,888	2.76	286,412	1.93
March.....	0	-	0	-	0	-	13,090	2.44	301,610	1.80
April.....	0	-	0	-	0	-	10,129	2.24	271,387	1.85
May.....	5,493	1.88	0	-	0	-	9,391	1.98	291,454	2.17
June.....	6,619	2.08	0	-	0	-	13,878	2.11	279,096	2.13
July.....	6,599	2.11	0	-	0	-	14,121	2.22	296,422	2.18
August.....	9,904	2.33	0	-	^b 2,576	2.36	17,336	2.32	312,081	2.39
September.....	4,393	2.55	0	-	0	-	16,973	2.58	302,414	2.63
October.....	5,865	2.57	0	-	0	-	13,292	2.51	304,637	2.50
November.....	6,648	2.85	2,713	3.03	0	-	14,175	2.98	305,152	2.85
December.....	5,256	2.83	0	-	0	-	15,091	2.83	324,050	2.34
Total	50,777	2.39	2,713	3.03	^b 2,576	2.36	163,430	2.47	3,585,505	2.24
2000										
January.....	7,780	3.01	0	-	0	-	12,806	2.85	325,897	2.44
February.....	5,168	2.91	0	-	0	-	10,155	3.33	300,107	2.60
March.....	8,393	2.89	0	-	0	-	14,812	2.77	306,596	2.61
April.....	7,285	3.05	0	-	0	-	19,378	2.90	294,016	2.86
May.....	10,723	3.05	0	-	0	-	13,176	3.06	287,793	3.05
June.....	7,390	3.48	2,725	3.53	0	-	17,517	3.49	296,046	3.87
July.....	14,307	3.30	0	-	^c 2,464	2.86	28,906	3.51	322,285	3.94
August.....	8,435	3.30	0	-	^c 2,461	2.86	22,943	3.29	318,308	3.62
September.....	4,864	2.98	0	-	^c 2,740	4.20	21,713	3.70	304,843	4.15
October.....	7,392	3.65	0	-	^a 2,760	3.99	27,390	3.96	324,527	5.16
November.....	6,950	3.85	0	-	^c 2,333	3.44	19,192	3.61	329,759	4.86
December.....	10,262	5.14	0	-	0	-	18,049	4.77	371,425	7.35
Total	98,949	3.43	2,725	3.53	^{ac} 12,758	3.50	226,036	3.50	3,781,603	3.95

^a Received from Indonesia.

^b Received from Malaysia.

^c Received from Oman.

- Not Applicable.

Notes: Totals may not equal sum of components due to independent rounding. Geographic coverage is the continental United States including Alaska. Prices for LNG imports are reported as "landed," defined as received at the terminal or "tailgate," defined as after regasification at the terminal. Generally, prices for shipments received at Everett, MA are reported as landed and at Lake Charles, LA as tailgate. For 1999 and 2000, the percentages of volumes associated with the type of price are: **Algeria**-1999, 56 percent landed, 44 percent tailgate; 2000, 40 percent landed, 60 percent tailgate.

Australia-1999, 21 percent landed, 79 percent tailgate; 2000, 100 percent tailgate. **Indonesia**-2000, 100 percent tailgate. **Malaysia**-1999, 100 percent landed. **Nigeria**-2000, 41 percent landed, 59 percent tailgate. **Oman**-2000, 77 percent landed, 23 percent tailgate. **Qatar**-1999, 100 percent tailgate; 2000, 100 percent tailgate. **Trinidad**-1999, 100 percent landed; 2000, 95 percent landed, 5 percent tailgate. **United Arab Emirates**-1999, 100 percent landed; 2000, 100 percent tailgate.

Sources: 1994 and Earlier Years: Energy Information Administration, Form FPC-14, "Annual Report for Importers and Exporters of Natural Gas." 1995 to 2000: Office of Fossil Energy, U.S. Department of Energy, *Natural Gas Imports and Exports*.

Table SR8. U.S. Natural Gas Exports by Point of Exit, 1999-2000
(Volumes in Million Cubic Feet; Average Prices in Dollars per Thousand Cubic Feet)

Year and Month	Canada (Pipeline)									
	Detroit, MI		Harve, MT		Marysville, MI		St Clair, MI		Total	
	Volume	Average Price	Volume	Average Price	Volume	Average Price	Volume	Average Price	Volume	Average Price
1999										
January	1,814	1.93	58	1.90	0	-	392	1.90	2,264	1.92
February	1,639	1.93	96	1.55	0	-	829	1.97	2,564	1.93
March	3,145	1.80	36	1.61	0	-	1,313	1.80	4,494	1.80
April	1,743	1.77	144	1.80	0	-	359	1.95	2,246	1.80
May	1,801	2.28	134	1.60	0	-	277	2.45	2,212	2.26
June	1,743	2.15	180	1.99	0	-	30	2.43	1,953	2.14
July	1,801	2.22	186	1.94	0	-	0	-	1,987	2.19
August	1,801	2.45	217	2.08	0	-	0	-	2,018	2.41
September ..	1,764	2.85	195	2.37	0	-	0	-	1,959	2.80
October	1,907	2.61	260	2.56	0	-	172	2.97	2,339	2.63
November ...	2,979	2.96	0	-	366	2.43	4,673	2.99	8,018	2.95
December ...	2,912	2.42	4	2.02	325	2.50	3,213	2.35	6,454	2.39
Total	25,049	2.30	1,510	2.05	691	2.47	11,258	2.51	38,508	2.35
2000										
January	3,143	2.46	261	2.09	1,093	2.60	1,737	2.56	6,234	2.50
February	3,576	2.59	203	2.28	1,346	2.75	3,892	2.80	9,017	2.70
March	4,052	2.65	263	2.58	1,435	2.75	3,301	2.86	9,051	2.74
April	1,883	2.79	64	2.61	477	2.89	669	3.08	3,093	2.86
May	2,561	3.11	0	-	493	3.06	679	3.36	3,732	3.15
June	2,819	4.15	0	-	477	4.39	447	3.57	3,742	4.11
July	2,919	4.43	198	3.23	0	-	646	4.46	3,762	4.37
August	2,805	3.88	237	3.33	0	-	858	4.14	3,900	3.90
September ..	2,794	4.40	209	4.51	0	-	1,680	5.39	4,682	4.76
October	2,805	5.22	44	4.70	0	-	2,478	5.31	5,327	5.26
November ...	3,400	4.29	77	4.71	0	-	6,400	3.79	9,877	3.97
December ...	3,250	5.09	52	8.39	0	-	6,868	3.93	10,169	4.32
Total	36,007	3.74	1,606	3.25	5,320	2.91	29,654	3.73	72,586	3.66

See footnotes at end of table.

Table SR8. U.S. Natural Gas Exports by Point of Exit, 1999-2000
(Volumes in Million Cubic Feet; Average Prices in Dollars per Thousand Cubic Feet) — Continued

Year and Month	Mexico (Pipeline)									
	Alamo, TX		Calexico, CA		Clint, TX		Douglas, AZ		Eagle Pass, TX	
	Volume	Average Price	Volume	Average Price	Volume	Average Price	Volume	Average Price	Volume	Average Price
1999										
January	0	-	237	2.37	3,101	1.74	10	1.73	185	1.89
February	0	-	233	2.17	3,288	1.66	730	1.79	150	1.88
March	0	-	261	2.05	3,950	1.55	146	1.56	179	1.78
April	0	-	282	2.10	3,334	1.74	181	2.03	162	1.95
May	0	-	350	2.54	4,859	2.21	300	2.47	162	2.44
June	0	-	340	2.53	3,928	2.26	427	2.44	158	2.33
July	0	-	338	2.69	3,743	2.26	403	2.50	157	2.38
August	0	-	342	2.91	3,717	2.65	371	2.93	145	2.71
September ..	0	-	337	3.25	3,663	2.88	286	2.90	151	3.00
October	0	-	379	3.03	2,412	2.61	384	2.59	173	2.64
November ...	0	-	342	3.43	3,581	2.84	338	2.59	174	3.13
December ...	0	-	283	2.72	2,791	2.21	465	2.30	194	2.22
Total	0	-	3,724	2.69	42,367	2.22	4,041	2.37	1,990	2.35
2000										
January	0	-	430	2.74	3,697	2.35	612	2.38	212	2.45
February	0	-	401	2.90	3,929	2.60	466	2.58	186	2.67
March	0	-	387	2.95	4,116	2.68	376	2.63	184	2.70
April	0	-	367	3.34	3,349	2.96	357	2.94	170	3.00
May	0	-	370	3.35	5,385	3.22	903	3.42	172	3.18
June	0	-	337	4.66	4,599	4.30	1,029	4.20	164	4.48
July	2,007	3.79	324	5.23	4,451	4.76	1,008	4.35	141	4.47
August	3,331	3.95	321	4.85	3,269	4.11	1,000	4.26	154	3.95
September ..	2,425	4.49	265	6.66	3,638	4.84	1,167	4.96	150	4.73
October	1,138	5.14	259	5.92	3,344	5.30	1,088	5.20	185	5.40
November ...	1,432	4.63	269	5.53	3,060	4.82	483	4.91	197	4.57
December ...	921	6.94	191	14.43	2,675	6.80	340	8.14	200	5.57
Total	11,254	4.49	3,921	4.67	45,512	3.95	8,829	4.23	2,114	3.91

See footnotes at end of table.

Table SR8. U.S. Natural Gas Exports by Point of Exit, 1999-2000

(Volumes in Million Cubic Feet; Average Prices in Dollars per Thousand Cubic Feet) — Continued

Year and Month	Mexico (Pipeline)									
	El Paso, TX		Hidalgo, TX		McAllen, TX		Otay Mesa, CA		Total	
	Volume	Average Price	Volume	Average Price	Volume	Average Price	Volume	Average Price	Volume	Average Price
1999										
January	993	1.91	0	-	0	-	0	-	4,526	1.81
February	376	1.81	0	-	0	-	0	-	4,777	1.72
March	0	-	1,414	1.72	0	-	0	-	5,950	1.62
April	392	1.96	698	2.24	0	-	0	-	5,049	1.87
May	437	2.47	0	-	0	-	0	-	6,108	2.27
June	362	2.30	63	2.22	0	-	0	-	5,278	2.29
July	631	2.31	340	2.31	0	-	0	-	5,612	2.31
August	823	2.72	0	-	0	-	0	-	5,398	2.70
September ..	830	2.76	0	-	0	-	0	-	5,267	2.89
October	496	2.75	242	2.85	0	-	0	-	4,086	2.68
November ...	566	3.02	0	-	0	-	0	-	5,001	2.89
December ...	240	2.53	0	-	0	-	0	-	3,973	2.28
Total	6,146	2.43	2,757	2.04	0	-	0	-	61,025	2.27
2000										
January	826	2.39	160	2.40	0	-	0	-	5,937	2.39
February	707	2.65	705	2.52	0	-	0	-	6,394	2.62
March	651	2.61	1,927	2.75	0	-	0	-	7,641	2.70
April	501	2.95	3,474	2.87	0	-	3	3.02	8,222	2.94
May	400	3.03	3,088	3.21	0	-	20	3.03	10,338	3.23
June	397	4.37	2,140	4.26	0	-	49	4.33	8,714	4.30
July	434	4.59	403	3.82	0	-	1,388	4.91	10,157	4.52
August	589	4.05	442	4.07	0	-	2,142	4.49	11,248	4.16
September ..	433	4.76	300	4.48	0	-	1,888	6.31	10,265	5.07
October	527	5.44	0	-	2,367	5.23	1,289	5.57	10,197	5.31
November ...	836	5.33	0	-	1,873	4.24	1,003	5.18	9,154	4.78
December ...	1,156	7.53	0	-	50	6.56	1,301	14.08	6,834	8.57
Total	7,458	4.35	12,639	3.26	4,291	4.81	9,083	6.53	105,102	4.26

See footnotes at end of table.

Table SR8. U.S. Natural Gas Exports by Point of Exit, 1999-2000
(Volumes in Million Cubic Feet; Average Prices in Dollars per Thousand Cubic Feet) — Continued

Year and Month	Japan (LNG)		Mexico (LNG)						Grand Total	
	Kenai, AK		Nogales, AZ		Otay Mesa, CA		San Diego, CA		Volume	Average Price
	Volume	Average Price	Volume	Average Price	Volume	Average Price	Volume	Average Price		
1999										
January	5,586	2.95	23	7.41	0	-	1	7.49	12,400	2.36
February	5,564	2.94	28	7.38	0	-	1	7.49	12,934	2.30
March	5,570	2.88	19	7.31	0	-	2	7.49	16,035	2.11
April	5,687	2.77	17	7.09	0	-	2	7.49	13,001	2.26
May	5,644	2.78	21	7.41	0	-	3	7.49	13,988	2.48
June	3,754	2.77	15	7.23	0	-	3	7.49	11,003	2.44
July	5,675	2.88	20	7.14	0	-	0	-	13,294	2.54
August	5,643	3.11	17	7.34	0	-	3	7.49	13,079	2.84
September ..	5,605	3.23	21	7.26	0	-	0	-	12,852	3.03
October	3,723	3.28	13	7.07	0	-	0	-	10,161	2.89
November ...	5,579	3.56	22	5.86	0	-	8	5.82	18,628	3.12
December ...	5,577	3.81	22	5.82	0	-	14	5.82	16,040	2.86
Total	63,607	3.08	238	7.01	0	-	37	6.50	163,415	2.61
2000										
January	5,569	4.04	24	5.82	0	-	12	5.82	17,776	2.95
February	5,566	4.08	22	5.82	0	-	16	5.82	21,015	3.05
March	3,769	4.18	28	5.82	0	-	16	5.82	20,505	3.00
April	5,670	4.25	18	5.82	0	-	12	5.82	17,015	3.37
May	5,709	4.27	19	5.82	0	-	12	5.82	19,810	3.52
June	3,763	4.34	15	5.82	0	-	15	5.82	16,249	4.27
July	5,597	4.36	15	5.82	0	-	14	5.82	19,546	4.45
August	5,598	4.22	16	5.82	0	-	13	5.82	20,775	4.13
September ..	5,592	4.37	17	5.82	0	-	11	5.82	20,568	4.81
October	7,512	4.51	24	5.82	10	5.82	0	-	23,070	5.04
November ...	5,686	4.49	41	5.82	10	5.82	0	-	24,767	4.39
December ...	5,579	4.51	32	5.82	6	5.82	0	-	22,621	5.65
Total	65,610	4.31	271	5.82	26	5.82	121	5.82	243,716	4.10

- Not Applicable.

Notes: Totals may not equal sum of components due to independent rounding. Geographic coverage is the continental United States including Alaska. The price of LNG

exports to Japan is the "landed" price, defined as received at the terminal in Japan.

Sources: Office of Fossil Energy, U.S. Department of Energy, *Natural Gas Imports and Exports*.

Table SR9. Summary of U.S. Natural Gas Exports, 1978-2000

(Volumes in Million Cubic Feet; Average Prices in Dollars per Thousand Cubic Feet)

Year and Month	Pipeline				Total Pipeline		LNG				Grand Total	
	Canada		Mexico		Volume	Average Price	Japan		Mexico		Volume	Average Price
	Volume	Average Price	Volume	Average Price			Volume	Average Price	Volume	Average Price		
1978 Total	66	1.79	4,033	1.65	4,098	1.66	48,434	2.17	0	-	52,532	2.13
1979 Total	76	2.04	4,308	1.97	4,384	1.97	51,289	2.32	0	-	55,673	2.29
1980 Total	113	3.31	3,886	2.47	3,999	2.50	44,732	4.90	0	-	48,731	4.70
1981 Total	106	4.79	3,337	3.37	3,443	3.41	55,929	6.05	0	-	59,372	5.90
1982 Total	162	4.95	1,705	5.17	1,867	5.15	49,861	5.83	0	-	51,728	5.81
1983 Total	136	4.60	1,646	4.79	1,782	4.78	52,857	5.11	0	-	54,639	5.10
1984 Total	127	4.19	1,786	4.48	1,913	4.46	52,840	4.93	0	-	54,753	4.92
1985 Total	178	3.06	2,207	3.99	2,385	3.92	52,883	4.81	0	-	55,268	4.77
1986 Total	9,203	2.12	1,896	3.49	11,099	2.35	50,172	2.91	0	-	61,271	2.81
1987 Total	3,297	1.81	2,125	3.18	5,421	2.35	48,599	3.15	0	-	54,020	3.07
1988 Total	19,738	2.02	2,327	3.21	22,065	2.14	51,573	2.99	0	-	73,638	2.74
1989 Total	38,443	2.00	17,004	2.14	55,447	2.05	51,424	3.01	0	-	106,871	2.51
1990 Total	17,359	2.70	15,659	1.88	33,018	2.31	52,546	3.59	0	-	85,565	3.10
1991 Total	14,791	1.91	60,448	1.76	75,239	1.79	54,005	3.71	0	-	129,244	2.59
1992 Total	67,777	1.83	95,973	1.90	163,750	1.88	52,532	3.43	0	-	216,282	2.25
1993 Total	44,518	2.14	39,676	2.02	84,195	2.08	55,989	3.34	0	-	140,183	2.59
1994 Total	52,556	2.42	46,500	1.68	99,057	2.08	62,682	3.18	0	-	161,738	2.50
1995 Total	27,554	1.96	61,283	1.50	88,836	1.64	65,283	3.41	0	-	154,119	2.39
1996 Total	51,905	2.67	33,840	2.11	85,745	2.45	67,648	3.65	0	-	153,393	2.97
1997 Total	56,447	2.52	38,372	2.46	94,818	2.49	62,187	3.83	0	-	157,006	3.02
1998 Total	39,891	2.25	53,133	2.04	93,023	2.13	65,951	2.91	33	5.69	159,007	2.45
1999												
January	2,264	1.92	4,526	1.81	6,790	1.85	5,586	2.95	24	7.41	12,400	2.36
February	2,564	1.93	4,777	1.72	7,341	1.79	5,564	2.94	29	7.39	12,934	2.30
March	4,494	1.80	5,950	1.62	10,444	1.70	5,570	2.88	21	7.33	16,035	2.11
April	2,246	1.80	5,049	1.87	7,295	1.85	5,687	2.77	19	7.13	13,001	2.26
May	2,212	2.26	6,108	2.27	8,320	2.27	5,644	2.78	24	7.42	13,988	2.48
June	1,953	2.14	5,278	2.29	7,231	2.25	3,754	2.77	18	7.28	11,003	2.44
July	1,987	2.19	5,612	2.31	7,599	2.28	5,675	2.88	20	7.14	13,294	2.54
August	2,018	2.41	5,398	2.70	7,416	2.62	5,643	3.11	20	7.36	13,079	2.84
September	1,959	2.80	5,267	2.89	7,226	2.87	5,605	3.23	21	7.26	12,852	3.03
October	2,339	2.63	4,086	2.68	6,425	2.66	3,723	3.28	13	7.07	10,161	2.89
November	8,018	2.95	5,001	2.89	13,019	2.93	5,579	3.56	30	5.85	18,628	3.12
December	6,454	2.39	3,973	2.28	10,427	2.35	5,577	3.81	36	5.82	16,040	2.86
Total	38,508	2.35	61,025	2.27	99,533	2.30	63,607	3.08	275	6.95	163,415	2.61
2000												
January	6,234	2.50	5,937	2.39	12,171	2.45	5,569	4.04	36	5.82	17,776	2.95
February	9,017	2.70	6,394	2.62	15,411	2.67	5,566	4.08	37	5.82	21,015	3.05
March	9,051	2.74	7,641	2.70	16,691	2.72	3,769	4.18	45	5.82	20,505	3.00
April	3,093	2.86	8,222	2.94	11,315	2.92	5,670	4.25	30	5.82	17,015	3.37
May	3,732	3.15	10,338	3.23	14,070	3.21	5,709	4.27	31	5.82	19,810	3.52
June	3,742	4.11	8,714	4.30	12,456	4.24	3,763	4.34	30	5.82	16,249	4.27
July	3,762	4.37	10,157	4.52	13,920	4.48	5,597	4.36	29	5.82	19,546	4.45
August	3,900	3.90	11,248	4.16	15,148	4.09	5,598	4.22	29	5.82	20,775	4.13
September	4,682	4.76	10,265	5.07	14,948	4.97	5,592	4.37	28	5.82	20,568	4.81
October	5,327	5.26	10,197	5.31	15,524	5.29	7,512	4.51	35	5.82	23,070	5.04
November	9,877	3.97	9,154	4.78	19,030	4.36	5,686	4.49	51	5.82	24,767	4.39
December	10,169	4.32	6,834	8.57	17,004	6.03	5,579	4.51	38	5.82	22,621	5.65
Total	72,586	3.66	105,102	4.26	177,688	4.02	65,610	4.31	418	5.82	243,716	4.10

- Not Applicable.

Notes: Totals may not equal sum of components due to independent rounding. Geographic coverage is the continental United States including Alaska. The price of LNG exports to Japan is the "landed" price, defined as received at the terminal in Japan. LNG exports to Mexico are shipped by truck.

Sources: 1994 and Earlier Years: Energy Information Administration, Form FPC-14, "Annual Report for Importers and Exporters of Natural Gas." 1995 to 2000: Office of Fossil Energy, U.S. Department of Energy, *Natural Gas Imports and Exports*.