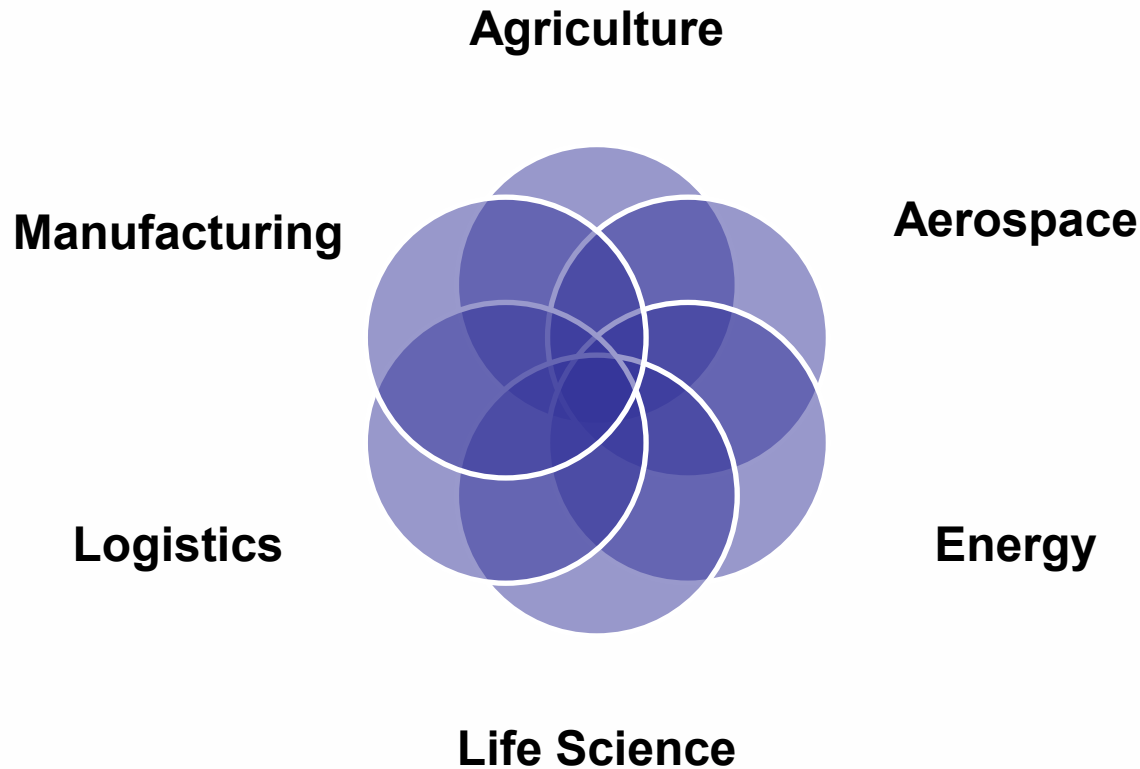


Jill P. Stuckey, Director

Center of Innovation – Energy



Georgia Centers of Innovation



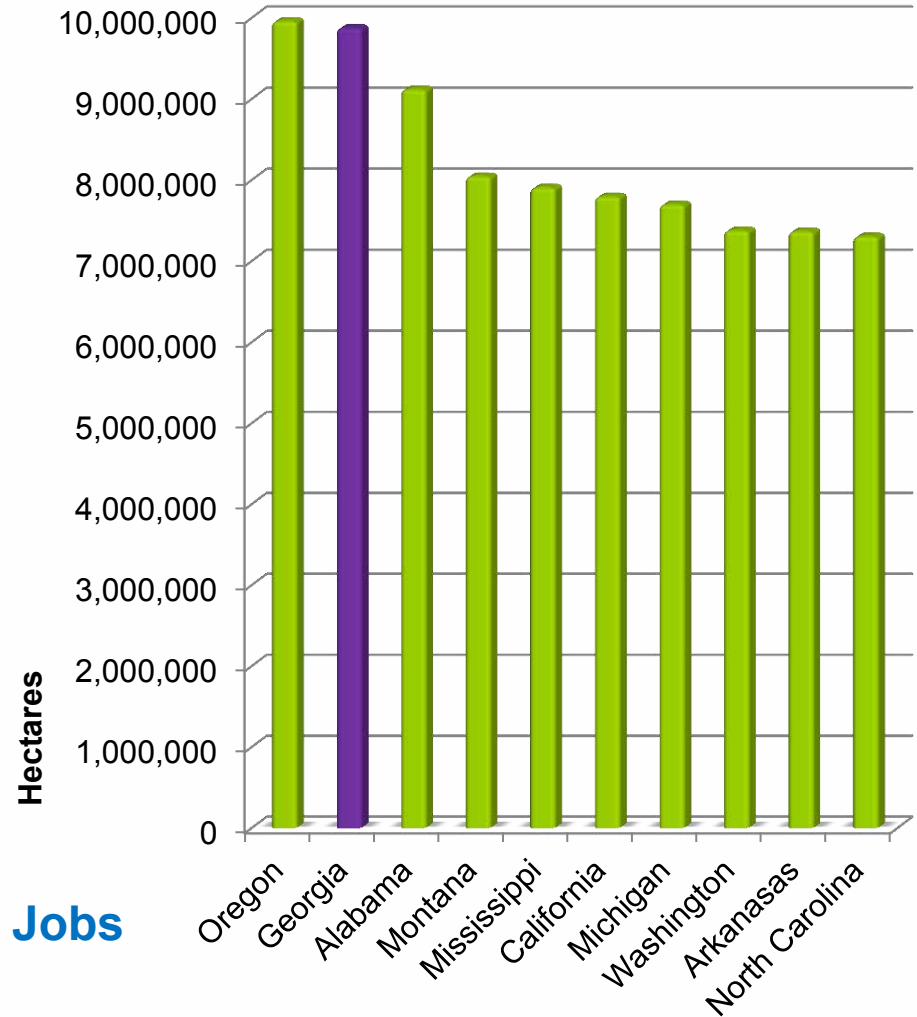
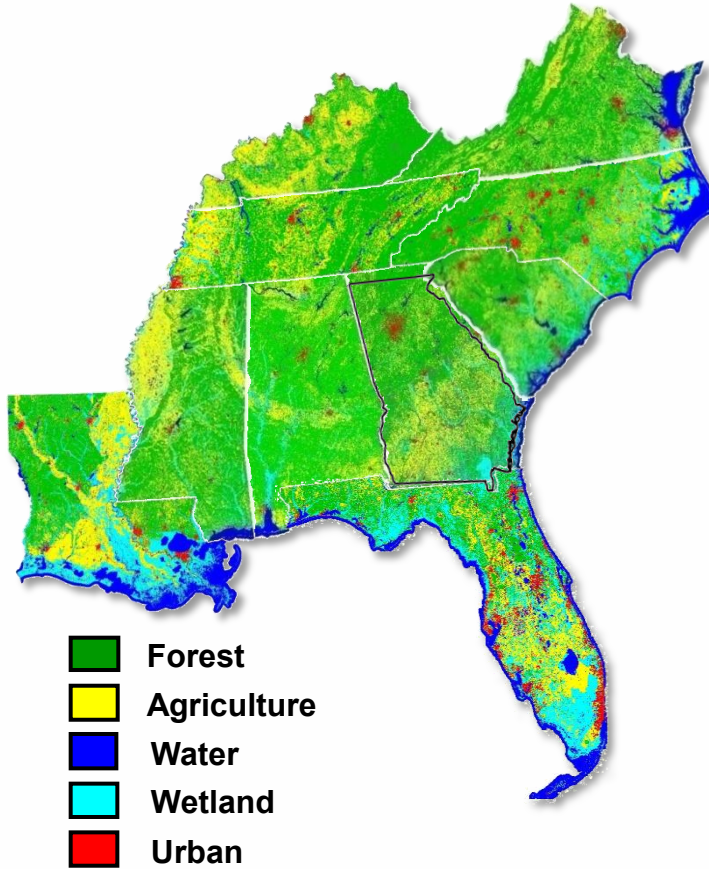
What is a Center of Innovation?

The Georgia Centers of Innovation are the critical link between strategic industries, research universities, financial resources, and the regulatory community.

Drivers

From an Economic Development Standpoint

- **Economy** – Forest Industries
- **Mandates** – Europe- creating jobs in the US
- **Environment** – It's cleaner
- **Energy Security** – Supply disruptions, Middle East



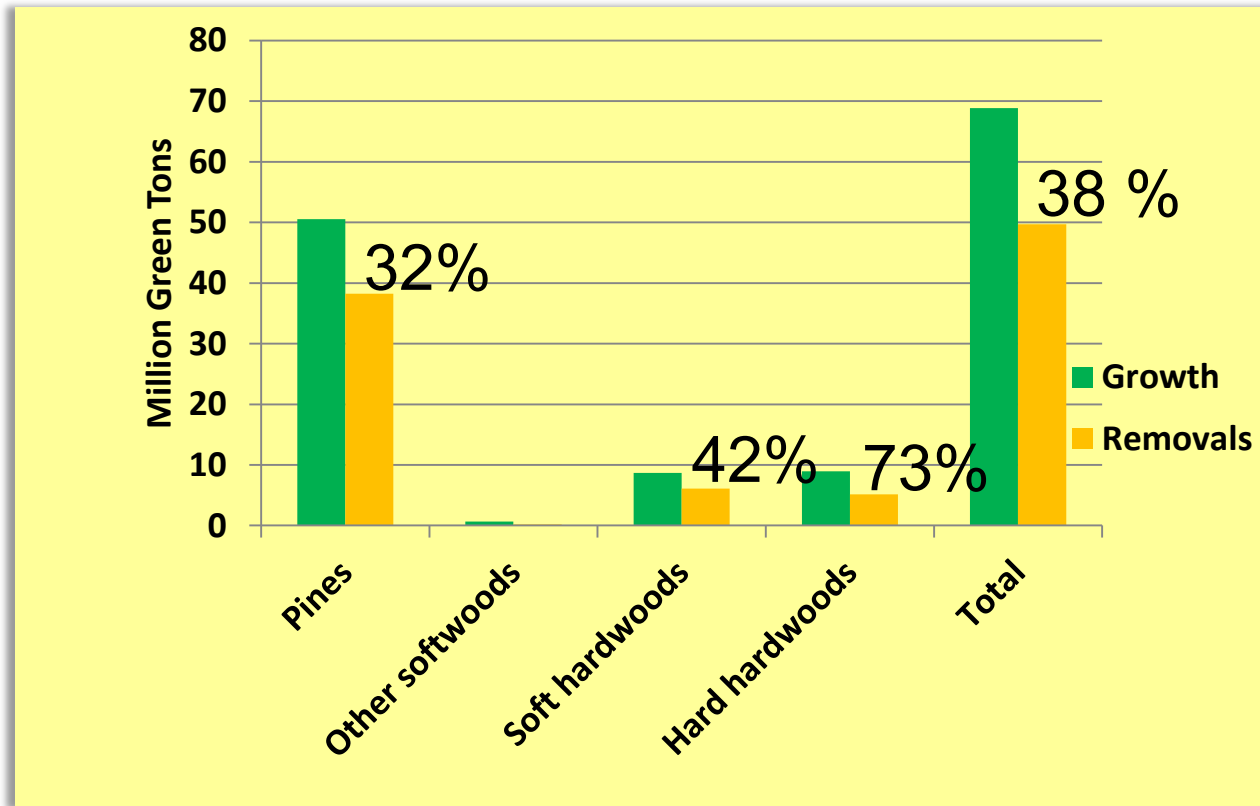
Southeast Forestry = Biomass Energy = Jobs

Georgia Wood Removals

- 1995 – 51.4 million green tons harvested
- 2009 – 39.2 million green tons harvested

12.2 million green tons to get back to where we were...

Growth and Removals of Merchantable Trees



*Between 1998 and 2008 the growth of growing stock on timberland in the state has exceeded removals by an **average of 38.5%** annually or 546,086,970 cubic feet per year*

Giant Miscanthus

- **Herbaceous, Deciduous, Perennial**
- **Rhizomes rather than seed**
- **11 - 25 Dry tons/acre/year**
- **Height up to 15 feet**
- **Low environmental inputs**
- **Alternative non-food use for marginal Land**
- **Drought tolerant, crowds out weeds**
- **Carbon neutral**

101 in Economic Development

1. Don't trash the other guy, too much.
2. Don't throw out high numbers.
3. Don't throw out low numbers.
4. Don't tell me your going to give 30% of the profits to poor children.
5. Don't tell me you have all the money you need and aren't looking for anything from the Feds, State County, or City

Yesterday...



GOVERNMENT COMMON SENSE



Energy

One Stop Shop

- **Forum** for new and expanding businesses
- Venue to explain state & federal **policies and procedures**
- We work to Expedite the **permitting** process
- **Matchmaking** to form successful collaborations

One Stop Shop

Georgia Offices

- Center of Innovation
- Governor's Office
- Agriculture
- Natural Resources
- Revenue
- Environmental Protection Agency
- Community Affairs
- Economic Development
- Herty Advanced Materials Development Center
- State Fire Marshall

Federal Offices

- Forestry Commission
- Department of Agriculture

Universities

- University of Georgia
- Georgia Institute of Technology

Sister Jill's Crystal Ball

Pellets

Drop In Fuels

Electricity

Chemicals

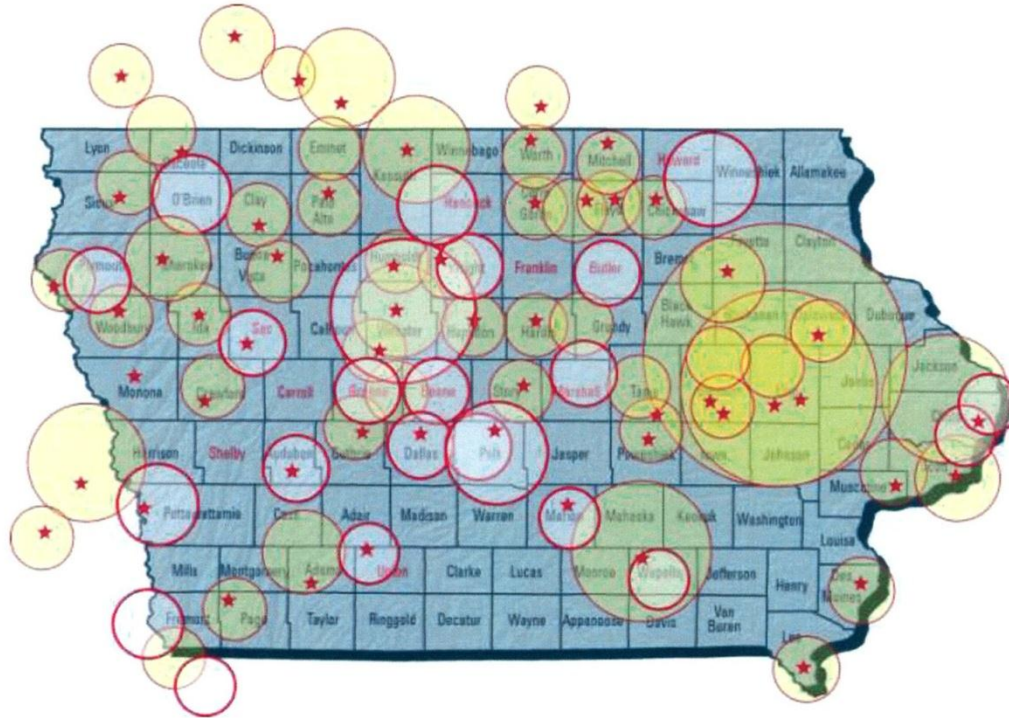
Torrefaction

Pharmaceutical



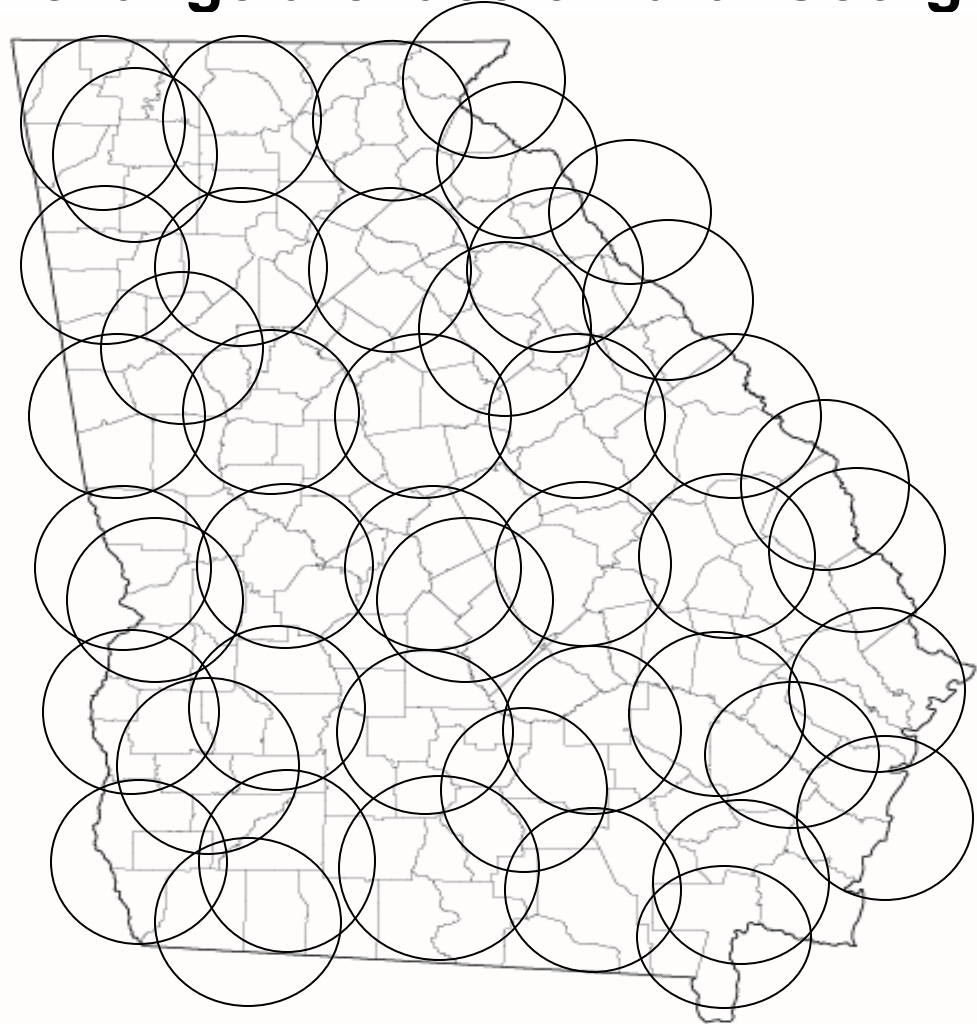
Ethanol

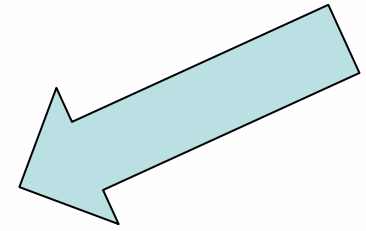
2002-2008: What Happened in Iowa in re: Biofuels?



Bio based fuels could change the face of rural Georgia

The State has sufficient biomass to support the development of over 45 major biomass investments of greater than \$100 Million each.





For More Information Contact:



Get Connected

Find news, events, success stories
& more on our Web site at
energy.georgiainnovation.org.

Jill Stuckey
COI-Energy, Director
404-584-1041
jill@gefa.ga.gov