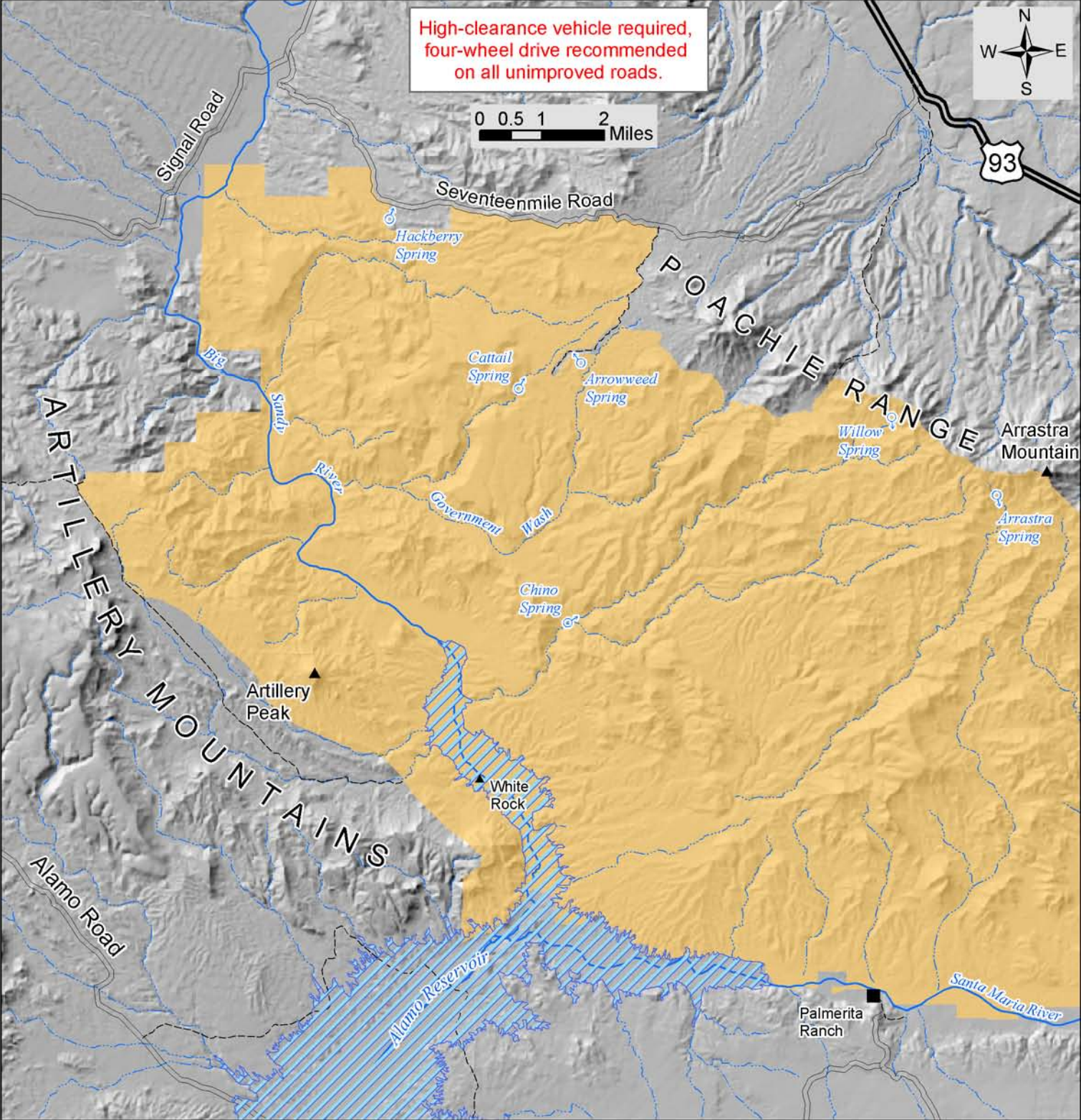


High-clearance vehicle required,  
four-wheel drive recommended  
on all unimproved roads.

0 0.5 1 2 Miles



# ARRASTRA MOUNTAIN WILDERNESS ACCESS MAP (West Half)

Map prepared by the  
Bureau of Land Management  
Kingman Field Office  
February 2005



**Legend**

- Unimproved dirt roads (jeep trails)
- Improved dirt roads
- Paved roads
- Arrastra Mountain Wilderness
- Major washes

No warranty is made by the Bureau of Land Management for use of the data for purposes not intended by BLM. Map is for illustrative purposes only.