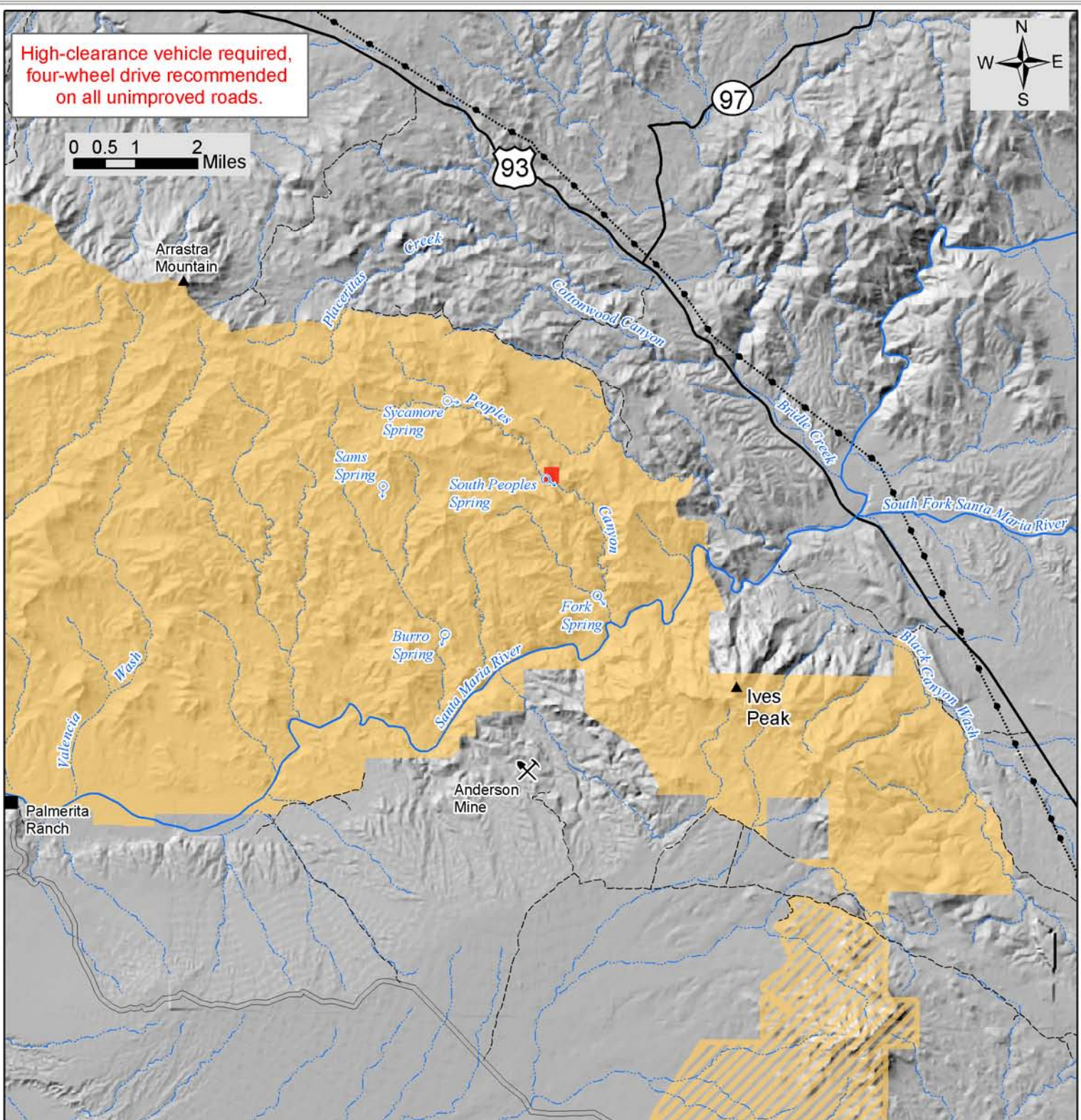


High-clearance vehicle required,
four-wheel drive recommended
on all unimproved roads.



0 0.5 1 2 Miles



Legend

- Unimproved dirt roads (jeep trails)
- Improved dirt roads
- Paved roads
- Arrastra Mountain Wilderness
- Tres Alamos Wilderness
- Powerline
- Major washes
- Private land

ARRASTRA MOUNTAIN WILDERNESS ACCESS MAP (East Half)

Map prepared by the
Bureau of Land Management
Kingman Field Office
February 2005



No warranty is made by the Bureau of Land Management
for use of the data for purposes not intended
by BLM. Map is for illustrative purposes only.