

Land Acquisition

Appropriations Language

For expenses necessary to carry out the Land and Water Conservation Fund Act of 1965, as amended (16 U.S.C. 460l-4 through 11), including administrative expenses, and for acquisition of land or waters, or interest therein, in accordance with statutory authority applicable to the United States Fish and Wildlife Service, \$140,000,000, to be derived from the Land and Water Conservation Fund and to remain available until expended, of which, notwithstanding 16 U.S.C. 460l-9, not more than \$5,000,000 shall be for land conservation partnerships authorized by the Highlands Conservation Act of 2004, including not to exceed \$160,000 for administrative expenses: Provided, That none of the funds appropriated for specific land acquisition projects may be used to pay for any administrative overhead, planning or other management costs.

Note.--A full-year 2011 appropriation for this account was not enacted at the time the budget was prepared; therefore, this account is operating under a continuing resolution (P.L. 111-242, as amended). The amounts included for 2011 reflect the annualized level provided by the continuing resolution.

Authorizing Statutes

The Fish and Wildlife Act of 1956, as amended (16 U.S.C. 742a). Authorizes acquisition of additions to the National Wildlife Refuge System for the development, management, advancement, conservation, and protection of fish and wildlife resources by purchase or exchange of land and water or interests therein.

Refuge Recreation Act of 1962, as amended (16 U.S.C. 460). Authorizes acquisition of areas that are adjacent to or within, existing fish and wildlife Conservation Areas administered by the Department of the Interior, and suitable for (1) incidental fish and wildlife-oriented recreation development, (2) the protection of natural resources, (3) the conservation of listed, threatened or endangered species, or (4) carrying out two or more of the above.

Land and Water Conservation Fund Act of 1965, as amended (16 U.S.C. 460l). Authorizes appropriations to the Fish and Wildlife Service to acquire land for National Wildlife refuges as otherwise authorized by law. Authorization of Appropriations: Expires September 30, 2015.

National Wildlife Refuge Administration Act of 1966, (16 U.S.C. 668dd). Established overall policy guidance, placed restrictions on the transfer, exchange, or other disposal of refuge lands, and authorized the Secretary to accept donations for land acquisition.

Endangered Species Act of 1973, as amended (16 U.S.C. 1534). Authorizes the acquisition of land, waters or interest therein for the conservation of fish, wildlife and plants, including those that are listed as endangered or threatened species, with Land and Water Conservation Fund Act appropriations.

Emergency Wetlands Resources Act of 1986, (16 U.S.C. 3901). Authorizes the purchases of wetlands, or interests in wetlands, consistent with the wetlands priority conservation plan established under the Act.

Highlands Conservation Act, (16 U.S.C. 3901). Authorizes the Secretary of Interior to work in partnership with the Secretary of Agriculture to provide financial assistance to the Highlands States (Connecticut, New Jersey, New York, and Pennsylvania) to preserve and protect high priority conservation land in the Highlands region.

Justification of Fixed Costs and Related Changes

	2010 Budget	2010 Enacted/ 2011 CR	2012 Fixed Costs Change
Additional Operational Costs from 2011 and 2012 January Pay Raises			
1. 2010 Pay Raise, 3 Quarters in 2010 Budget (2.0%)	+\$104	N/A	N/A
<i>Amount of pay raise absorbed</i>	[\$0]		
2. 2009 Pay Raise, 1 Quarter (3.9%)	+67	N/A	N/A
<i>Amount of pay raise absorbed</i>	[\$0]		
3. 2010 Pay Raise, 1 Quarter (Enacted 2.0%)	N/A	N/A	N/A
<i>Amount of pay raise absorbed</i>		[+\$36]	
4. 2011 Pay Raise, 3 Quarters in 2011 Budget (0%)	N/A	\$0	N/A
<i>Amount of pay raise absorbed</i>		[\$0]	
5. 2011 Pay Raise, 1 Quarter (0%)	N/A	N/A	\$0
<i>Amount of pay raise absorbed</i>			[\$0]
6. 2012 Pay Raise, 3 Quarters (0%)	N/A	N/A	\$0
<i>Amount of pay raise absorbed</i>			[\$0]
7. Non-Foreign Area COLA – Locality Pay Adjustment	N/A	\$0	+\$5
<i>Amount of pay raise absorbed</i>		[+\$11]	[\$0]
<p>These adjustments are for an additional amount needed to fund estimated pay raises for Federal employees. Lines 1 and 2, 2010 pay raise estimates provided as a point of reference. Line 3 is the amount absorbed in 2011 to fund the enacted 2.0% January 2010 pay raise from October through December 2010. Lines 4 and 5, 2011 pay raise is shown as “0” to reflect the first year of the Administration-directed 2-year pay freeze at the 2010 level. Line 6 is shown as “0” to reflect the second year of the Administration-directed 2-year pay freeze at the 2010 level.</p>			

	2010 Budget	2010 Enacted/ 2011 CR	2012 Fixed Costs Change
Other Fixed Cost Changes			
One Less Paid Day	N/A	N/A	-\$34
<i>This adjustment reflects the decreased costs resulting from the fact that there is one less paid day in 2012 than in 2011.</i>			
Employer Share of Federal Health Benefit Plans	+\$29	\$0	+\$35
<i>Amount of health benefits absorbed</i>	[\$0]	[+\$33]	[\$0]
<i>This adjustment is for changes in Federal Government's share of the cost of health insurance coverage for Federal employees. For 2012, the increase 6.8%.</i>			
Rental Payments	+\$0	\$0	+\$9
<i>Amount of rental payments absorbed</i>	[\$0]	[+\$6]	[\$0]
<i>The adjustment is for changes in the costs payable to General Services Administration and others resulting from changes in rates for office and non-office space as estimated by GSA, as well as the rental costs of other currently occupied space. These costs include building security; in the case of GSA space, these are paid to DHS. Costs of mandatory office relocations, i.e. relocations in cases due to external events there is no alternative but to vacate the currently occupied space, are also included.</i>			

Related Changes – Internal Transfers and Other Changes Non-Policy Program Changes			
Land Protection Planning			+\$3,440
<i>The National Wildlife Refuge System's Land Protection Planning program directly supports the Land Acquisition program. The Service will transfer funding from the Resource Management Appropriation to the Land Acquisition Appropriation to better align the purpose of this program.</i>			

Appropriation: Land Acquisition

		2010 Actual	2010 Enacted/ 2011 CR ¹	2012 Request			Change from 2011 (+/-)
				Fixed Costs & Related Changes (+/-)	Program Changes (+/-)	Budget Request	
Land Acquisition Management	(\$000)	10,555	10,555	15	+3,000	13,570	+3,015
User Pay Cost Share	(\$000)	2,000	2,000	0	0	2,000	0
Exchanges	(\$000)	2,000	2,000	0	0	2,000	0
Inholdings	(\$000)	2,500	2,500	0	0	2,500	0
Emergencies and Hardships	(\$000)	2,500	2,500	0	0	2,500	0
Federal Refuges/Projects	(\$000)	66,785	66,785	0	+47,205	113,990	+47,205
Impact of 2011 Continuing Resolution			[-20,000]				
Subtotal, Land Acquisition - Realty	(\$000)	86,340	86,340	15	+50,205	136,560	+50,220
	FTE	77	77	0	+10	87	+10
² Refuge Land Protection Planning	(\$000)	0	0	+3,440	0	3,440	+3,440
	FTE	0	0	+20	0	20	+20
Highlands Conservation	(\$000)	[4,000]	[4,000]	0	[+1,000]	[5,000]	[+1,000]
Total, Land Acquisition	(\$000)	86,340	86,340	+3,455	+50,205	+140,000	+53,660
	FTE	77	77	+20	+10	107	+30

¹ 2010 Enacted/2011 CR data represents the 2011 President's Budget level amount for this activity for purposes of discussing 2012 project plans. The total funding for this account includes an undistributed account-level adjustment to bring the account funding into alignment with the annualized 2011 Continuing Resolution funding level.

²This is a transfer of the Land Protection Planning program element from NWRS Conservation Planning to the Division of Realty, Land Acquisition program.

Summary of 2012 Program Changes for Land Acquisition

Request Component	(\$000)	FTE
· Land Acquisition Management	+3,000	+10
· Federal Refuges/Projects	+47,205	0
TOTAL Program Changes	+50,205	+10
Internal Transfer – Refuge Land Protection Planning (Fixed Costs and Related Changes)	+3,440	+20

Justification of 2012 Program Changes

The 2012 budget request for Land Acquisition is \$140,000,000 and 107 FTE, a net program change of +\$50,205,000 and +10 FTE from the 2010 Enacted /annualized 2011 Continuing Resolution.

Land Acquisition Management (+\$3,000,000/+10 FTE)

For FY 2012, the U.S. Fish and Wildlife Service (Service) requests an increase for Land Acquisition Management of +\$3,000,000 and +10 FTE to support the increased volume of projects over prior fiscal years and for 2012.

Federal Refuges/Projects (+\$47,205,000/+0 FTE)

For FY 2012, the Service requests an increase of +\$47,205,000. Increased funding would enable the Service add a significant number of fee and easement acres of lands and waters that continue the strategic growth of the Refuge System to accomplish the System's mission, contribute to the conservation of ecosystems, as well as complement conservation efforts of states and other Federal agencies. Increased funding would also enable the Service to provide open space for the public to recreate and connect with the publicly owned conservation estate. The Service requests \$113,990,000 to acquire and conserve important wildlife habitat for over 60 projects. The project descriptions provide details about the resource values of the lands and waters proposed for addition to the Department's network of conservation lands.

The Service will make acquisition decisions based on the resource values of lands and waters proposed for acquisition, ecosystem considerations, the potential for landscape-level conservation, and opportunities to advance and support projects involving partnerships with both public and private conservation partners.

The requested increase of \$47,205,000 for land acquisition is part of the Administration's proposal to fund the Land and Water Conservation Fund to the full amount of \$900,000,000 as provided in the Land and Water Conservation Fund Act. Acquisition of land for conservation benefits the health of the nation by supporting the "Let's Move Outside" initiative; national wildlife refuge lands provide affordable public outdoor recreational activities such as birdwatching, wildlife observation, photography, environmental education, interpretation, fishing, and hunting. More than 44 million people visited national wildlife refuges in 2010. Recreation opportunities provided by national wildlife refuges support local tourism, which supports local economies. Visitors stay in local lodges, eat at local restaurants, and shop in local stores. Local employment increases, and additional funding goes to local, county, and state governments due to increased tax revenues.

Program Overview

Through the Land and Water Conservation Fund (LWCF), the Service receives funding to acquire lands, waters, and interests therein as authorized by acts of Congress. The Service acquires important fish, wildlife, and plant habitat for the conservation of listed endangered and threatened species, as additions to the existing National Wildlife Refuge System (Refuge System) and the National Fish Hatchery System. The Land Acquisition Program uses alternative and innovative conservation tools, including conservation easements, implements projects that have the input and participation of the affected local communities and stakeholders, and leverages Federal dollars to the maximum extent possible.

Refuge Land Protection Planning

This planning function evaluates potential land acquisitions to support the strategic growth of the Refuge System. Refuge field stations work in cooperation with partners to identify and protect habitats for migratory birds and other important species. In some cases, Land Protection Plans will be prepared to establish new refuges or, more likely, to expand existing refuges to address the needs of fish, wildlife, and plant communities. Specific activities include gathering background data, coordinating with state and local entities, involving the public, analyzing ecological, legal, and financial issues, as well as printing and distributing draft and final plan documents.

The Service has developed three draft planning policies to guide the strategic management of the Refuge System. When finalized, these policies will be incorporated into the Service Manual as sections on Strategic Growth, Land Protection Planning, and Land Acquisition Planning. The Strategic Growth policy provides guidance to identify areas of ecological importance for conservation and potential land acquisitions or exchanges. The Land Protection Planning policy describes the specific procedures and documents used in the conservation planning processes. The Land Acquisition Planning policy provides criteria for prioritizing approved proposals for funding.

Strategic Outcomes and Results

The Land Acquisition Program fulfills its goals by conserving habitat where biological communities will flourish. The Service's Land Acquisition Priority System (LAPS), a merit-based selection process, ranks lands for acquisition on standardized criteria. The LAPS quantifies the biological contributions of fisheries and aquatic resources, endangered species, migratory birds, and larger ecosystems at the refuge level. Using this information, the LAPS serves as the biological starting point for the prioritization of active land acquisition projects that have willing sellers. It serves as an objective and biologically based source of information for decision makers.

The America's Great Outdoors initiative will enhance the Service's science-based prioritization of land acquisition projects by focusing on landscape-scale conservation projects. The Service's projects support its mission-oriented priorities as well as potential cross-bureau collaborative conservation projects. Cross-bureau conservation focus areas include the Crown of the Continent, the Lower Mississippi Valley, the Chesapeake Bay, Grasslands/Prairie Potholes, and the Connecticut River, among others. Many Service projects provide or enhance public outdoor recreation in close proximity to both urban and rural areas. Important factors for all projects proposed for the FY 2012 budget include contribution of leveraged funds, partner participation, and urgency of project completion, to protect ecosystems and wildlife species from development or inappropriate uses.

Means and Strategies

It is the Service's policy to request acquisition funding only for those areas within previously established Refuge System boundaries. In every project for which the Service is requesting funding the Service has completed the necessary National Environmental Policy Act process and has an approved Land Protection Plan.

Highlands Conservation

The Highlands Conservation Act (HCA) authorizes the Secretary of the Interior to work in partnership with the Secretary of Agriculture to provide financial assistance to the Highland States (Connecticut, New Jersey, New York, and Pennsylvania) for preservation and protection of high priority conservation land in the Highlands region. The purpose of the HCA is to: recognize the importance of the water, forest, agricultural, wildlife, recreational, and cultural resources, and the national significance of the Highlands region to the United States; to authorize the Secretary of the Interior to work in partnership with the Secretary of Agriculture to provide funding for financial assistance to the Highland States to preserve and protect high priority conservation land in the Highlands region; and to continue ongoing Forest Service programs in the region. The Federal grant share of the cost of carrying out a land conservation partnership project shall not exceed 50 percent of the total cost of the land conservation partnership project. The Service works with the Highland States and other Federal agencies to determine how best to implement the HCA.

Funding for Highlands projects will enable acquisition of parcels within the projects that have met the criteria of the Highlands Act. These funds would complement state funds at a greater than 1:1 match, as required by the Act. Although specific parcels and acreages are not available to date for FY 2012, funds would be disbursed based on individual state interest in partnering for Highlands projects. Connecticut anticipates purchasing lands within the 61,699 acre Shepaug River Headwaters Focus Area. The State of New York plans to fund parcels within a 2,766 acre area of the East Hudson Highlands. New Jersey would work in a 987 acre portion of the Twin Watershed project area and Pennsylvania is planning to acquire parcels within a 375 acre section of South Mountain. All projects would meet funding match criteria.

To date the Service has disbursed over \$3.7 million in HCA funding to the 4 States, which led to 1,638 acres being protected in fee and 81 acres protected through conservation easements. With those funds, the Service has also leveraged over \$14.9 million in state dollars for land protection in the Highlands region. Completed projects for which the Service has disbursed funds include: FY 2007 and 2008 funds for

Connecticut, New Jersey, and New York; FY 2009 funds for New Jersey and New York; and FY 2010 funds for New York.

Use of Cost and Performance Information

U.S. Fish and Wildlife Service Lands Mapper

The Service Lands Mapper is an internal, web-based application for viewing Service managed lands and waters. The new Service Lands Mapper Lite is a web-based application for public viewing of maps of FWS managed lands. The Lands Mapper mapping application is designed to provide an overview of the Fee Title lands in the Cadastral Program in all Service Regions. All lands and boundaries depicted are considered resource-grade and include purchase information and data about a majority of the Service Interest tracts at this time.

The application enables Service employees to learn more about the land and water that the Service manages. The mapping application has been built using the Service's cadastral data and allows cadastral data to reflect the external boundaries of all fee title Service-managed units, such as National Wildlife Refuges, as well as tracts of land and water within those boundaries.

The cadastral data is maintained by the Service's Cadastral Data Working Group. It is contained in the Service National Cadastral Geodatabase and is updated twice yearly. Additional tabular data specific to the fee title tracts of land and water is contained in the Lands Record System (LRS).

Benefits of the Lands Mapper for Realty staff and other Service programs and employees at this time are:

- Display aerial photography, topographic maps, and street data for anywhere in the country.
- Search and zoom capability of Service-managed lands.
- Locate acreage information, links to station websites, and data for Service lands and the associated tracts of land or water (including the Wetland Management Districts).
- Compute measurements of distance and area.
- Print and export custom-made maps.

The Service Lands Mapper Lite mapping application will go into the NWRS Content Management System and will provide interactive maps for all NWRS Refuges for the public. It also will enable the Service to share, and directly access, data with the Department of Transportation, Federal Highway Administration, Federal Lands Program, and display this information on the mapper. This application is a huge move forward in data sharing, saving time, and utilizing the resources of other federal agencies.

Using contemporary conservation tools and working with partners, land acquisition projects have provided significant biologically valuable lands for the National Wildlife Refuge System.

Crystal River National Wildlife Refuge, Florida

The Crystal River National Wildlife Refuge serves as an example of a significant acquisition funded by this program. In July 2010 the Service, the private landowner, and many other partners joined forces to secure habitat for the endangered West Indian (Florida) manatee by acquiring 58 acres of important habitat at Crystal River National Wildlife Refuge, Three Sisters Springs. The springs are used by manatee for calving and feeding during cold weather. The refuge is located in an urban area completely surrounded by development, and the property had been zoned for 400 homes. Through the partnership, the Florida Communities Trust program has secured a conservation easement on the property, and the



Manatees swim in the protected waters of the Three Sisters Springs, Crystal River NWR in Florida.

City of Crystal River and the Southwest Florida Water Management District have agreed to manage the property as part of the Crystal River National Wildlife Refuge.

Funding for the \$10,600,000 project came from a variety of sources, including \$3,300,000 in federal funding through the Land and Water Conservation Fund and the North America Wetlands Conservation Act; nearly \$5,000,000 from the State of Florida; \$300,000 from the City of Crystal River, Citrus County and the Citrus County Tourist Development Council; and nearly \$3,000,000 from fundraising efforts by The Conservation Fund, the Felburn Foundation, the National Wildlife Refuge Association, the Friends of Chassahowitzka National Wildlife Refuge Complex, the Save the Manatee Club, and others. The importance of this habitat for the endangered manatees was confirmed during a cold spell in the winter of 2010.



Blackwater National Wildlife Refuge marsh and forests provide rich habitat for a variety of wildlife while simultaneously contributing to Chesapeake Bay Watershed Protection.

Blackwater NWR, Maryland

The newest acquisition at the Blackwater NWR adds 766.9 acres of marsh and forested habitats to the refuge. Both LWCF and MBCF funds were used to acquire the land. Multiple habitats support a variety of priority species, including black ducks, Delmarva fox squirrels, bald eagles, and a variety of important forest-dwelling birds, including the brown-headed nuthatch, white-eyed vireo, and pine warbler. This parcel contributes to outcomes identified in the *Strategy for Protecting and Restoring the Chesapeake Bay Watershed* such as: the protection of high-priority lands throughout

the watershed, the restoration of forested habitat, and the protection of black duck habitat. Acreage within the Harriet Tubman National Historic Landscape is included in this acquisition within Blackwater NWR.

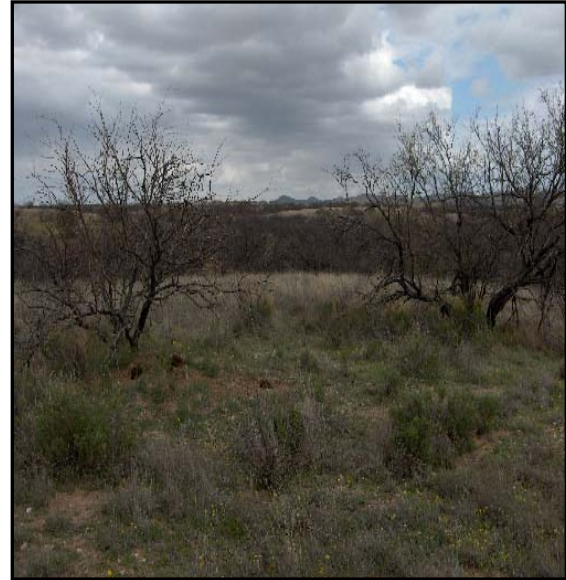
Buenos Aires NWR, Arizona

In FY 2010, the Service acquired a 40-acre tract, known as the Sasabe Vineyard, on the Buenos Aires National Wildlife Refuge (Refuge) in Pima County, Arizona. The Vineyard is along the southern border of the Refuge, approximately two miles north of the US-Mexico border. The Refuge is home to the

endangered masked bobwhite and includes a captive-breeding program. The captive-reared masked bobwhite has been released onto the Refuge for many years. Currently, Refuge biologists are focusing on habitat management to increase the survival rate of the endangered wild masked bobwhite concentrated on the Refuge.

James Campbell NWR, Hawai'i

At James Campbell NWR, located on the north shore of O'ahu, the Service has more than doubled the size of the Refuge with the addition of the first phase of a four phase acquisition which will ultimately increase the Refuge by 851 acres. The acquisition of 306 acres consists of both natural and artificially-maintained wetlands and serves as vital habitat for rare and endangered waterbirds, including the Hawaiian stilt, Hawaiian coot, Hawaiian moorhen, and Hawaiian duck. As overgrazing, agriculture, industry, and urbanization threaten these low flatland areas, this acquisition was critical to protecting these endangered waterbirds as well as migratory shorebirds, waterfowl and native plants. This acquisition, along with the future phases, will permanently protect an ecologically intact unit, provide for increased wildlife-dependent public use, and assist with reducing flood damage to the Refuge and local community.



Lands like the Sasabe Vineyard, acquired for Buenos Aires NWR in Arizona, greatly enhance the Service's ability to conserve Trust resources like the endangered masked bobwhite.



This relatively large acquisition on the North shore of O'ahu for James Campbell NWR is very important for the conservation of endangered waterbirds as well as shorebirds, waterfowl, and native plants.

James River NWR, Virginia

The Service acquired a 125 acre tract known as Blair's Wharf, with nearly one mile of shoreline on the James River. Vegetated primarily by hardwoods and pines, the property provides excellent habitat for bald eagles. The shorelines of the refuge and Blair's Wharf contribute to one of the East Coast's premier eagle roosting sites. Both the wharf and the refuge lie within the 116,140 acres that comprise the Lower James River Important Bird Area (IBA), which covers approximately 20 river miles from east of Interstate 95 to the Surry County line. The parcel was purchased with LWCF funds and a wetlands trust fund managed jointly by the U.S. Army Corps of Engineers and The Nature Conservancy.

Rappahannock River Valley NWR, Virginia

The Service acquired the 260 acre Bower Hill tract from the Trust for Public Land for \$1,500,000 with LWCF funds. The parcel is forested and has recently harvested woodland. The parcel lies next to the 463 acre Laurel Grove Tract managed as part of the Rappahannock River Valley NWR. Mature forested habitat supports several migratory bird species of conservation concern, including breeding species such as the scarlet tanager, Kentucky warbler, and wood thrush. Wooded swamps and ravines support breeding Louisiana waterthrush, prothonotary warblers, and wood ducks. Bower Hill has considerable frontage on Farnham Creek, supporting wintering waterfowl such as the Canada goose (Atlantic Flyway population) and the American black duck.



A recent land acquisition, at the Rappahannock River Valley NWR in Virginia, will allow the Service to conserve nearby forest land providing valuable habitat for species that rely on mature forest habitat.



LWCF funds allowed the Service to purchase the largest remaining privately held land block on the North side of Murphy Creek acquisition in Red Rock Lakes NWR, MN.

Red Rock Lakes NWR, Montana

Acquisition of the Murphy Creek Ranch was a three year effort (2008-2010) culminating in the protection of the single, largest remaining private land within Red Rock Lakes National Wildlife Refuge (Refuge) in southwestern Montana. The tract consisted of 7,575.07 acres (4,308.75 acres in fee and 3,266.32 acres of state lease lands) including 1,050 wetland acres. The acres provide important breeding habitat for 21 species of waterfowl and 35 species of other wetland-dependent birds. The parcel includes several significant water rights ensuring future water supplies for Upper and Lower Red Rock Lakes, the largest wetland complex in the Greater Yellowstone Ecosystem. The Nature Conservancy (TNC) of Montana acquired the property in 2007 and has been a key partner.

The Service has strategically acquired the property over the past three years using a variety of funding sources. The funding sources include Land and Water Conservation Fund, Migratory Bird Conservation Fund, North American Wetland Conservation Fund and a significant contribution of nearly \$2,000,000 from the Bureau of Land Management (BLM) through the Federal Land Transaction Facilitation Act (FLTFA) program.

San Joaquin River NWR, California

The San Joaquin River NWR is the newest unit of the San Luis NWR Complex. Recently, the Service was able to acquire 371 acres in fee and 343 easement acres from the Lyons family. Since being established in 1987, the Refuge has focused on the habitat for Aleutian Canada (cackling) geese by protecting the wintering grounds. Previously on the endangered species list, the population of the species has significantly increased and has been de-listed. Aleutian Canada geese are now a game species for sportsmen. Another endangered species focus for the Refuge is the riparian brush rabbit, possibly the most endangered mammal in California. Very little of the brush rabbit's dense riparian habitat remains. Acquisition of needed habitat is a key element for this species' recovery. With the latest acquisition, habitat will be provided for the riparian brush rabbit.

Upper Mississippi River National Wildlife and Fish Refuge

During FY 2010, 178 acres were added to the Upper Mississippi River National Wildlife and Fish Refuge (NW&FR) through the cooperation of multiple federal, state and conservation organizations. Through cooperative efforts, over 200 acres are anticipated to be added in FY 2011. The Upper Mississippi River NW&FR is a landscape-level project consisting of over 209,000 acres of wooded islands, sandbars, deep water, wet meadow and other wetlands. The Refuge extends 260 miles down the Mississippi River from the mouth of the Chippewa River near Wabasha, Minnesota, to Rock Island, Illinois.

Congress authorized the Refuge to acquire lands generally targeted for the floodplain of the Mississippi River. Acquisitions have been accomplished with the cooperation of U.S. Army Corps of Engineers,

Ducks Unlimited, The Nature Conservancy, Minnesota Department of Natural Resources (DNR), Wisconsin DNR, Iowa DNR, Illinois DNR, and Friends of the Upper Mississippi Refuge. A new office/visitor complex with exhibits, multipurpose rooms, and interpretive trails is under construction, and will be open for business in the spring of 2011.



Multiple Federal, State and NGOs partnered with the Service to preserve 178 acres of land and water on the Upper Mississippi River, so that future generations of Americans will still be able to enjoy the majesty of sunrise over the largest river system in North America (photo by Sandra Lines).

Millions of songbirds use the Mississippi River corridor as a migration route. Thousands of tundra swans rest and feed in the River valley from October until freeze-up, while hundreds of thousands of diving ducks, including canvasbacks, redheads, lesser scaup, ringnecks, buffleheads and ruddy ducks use the open water areas. A wide variety of other wildlife are also present, including 306 bird, 119 fish, 42 mussel, and 45 reptile and amphibian species. The Refuge is important habitat for the federally endangered Higgins' Eye pearly mussel. The numerous and extensive wetland complexes in the Refuge perform many functions,

such as flood control and nutrient recycling. As a visitor, you can take a quiet trip to the backwaters, camp on an island, go fishing at a favorite spot and hunt your favorite waterfowl.

Cherry Valley NWR, Pennsylvania

The Cherry Valley NWR was established with the acquisition of a 180 acre tract at a bargain sale price of \$750,000. The Cherry Valley National Wildlife Refuge Partnership worked to establish the refuge for several years. The acquisition of the tract is a shining example of how communities join together to support the protection of natural resources. Within the refuge boundaries, more than 20,000 acres of nationally significant ecosystems will be protected along with many plants and animals, such as the Federally-listed bog turtle. The Kittatinny Ridge, a nationally known migratory flyway for migrating raptors and songbirds, is the headwaters of Cherry Creek.



Cherry Valley, the newest National Wildlife Refuge, is a shining example of how communities can come together to support the protection of natural resources.

The creek is a pristine cold water creek that runs the length of the refuge, through bog turtle habitat and mountainside forests. Less than 2 hours from New York City and Philadelphia, the refuge will provide recreational opportunities to urban audiences.

Update on Land Exchanges for FY 2012

The following pages list refuges, waterfowl production areas, wetland management districts, and Farm Service Agency (FSA) properties that may be part of ongoing projects in the negotiation or acquisition phases of possible land exchanges. Other exchanges may be undertaken throughout FY 2012 as opportunities arise. The Service projects an estimated \$2,469,000 in acquisition costs for 147,087 acres. Exchanges may involve on-going expenditures over a period of years.

Exchange projects have provided unique experiences to work with partners from Federal, state, and local governments, in addition to private landowners, and local and national conservation groups. Taking advantage of the expertise of the collective groups, exchange projects have provided significant biologically valuable lands providing critical habitat for a variety of wildlife within the National Wildlife Refuge System.

Baca NWR, Colorado

A five-year multi-agency effort came to fruition in December 2009. Working in partnership with the Bureau of Land Management (BLM), the Colorado Board of Commissioners (State), and the National Park Service, the Service completed a large land exchange in southwestern Colorado. The transaction added 27,380 acres of lands and minerals, plus 3,531 acres of mineral interests, to the Baca National Wildlife Refuge. The Great Sand Dunes National Park benefited from the land exchange between the BLM and the State. The agencies worked together to complete cultural resource inventories, environmental sites assessments, a biological assessment, appraisals, and an Environmental Assessment of the proposed exchange.

A Record of Decision to move forward with the transaction was signed by BLM on October 28, 2009, and the transaction closed after a 45-day protest period lapsed. A total of 57,056 acres (surface and mineral interests) and 5,810 acres (mineral interest) valued at \$7,798,000 were transferred to the United States,

while the State received various parcels of Federal lands that lie adjacent to existing State lands. Those parcels totaled 20,870 acres and were valued at \$7,800,000. The exchange consolidated public landownership patterns which will provide greater long-term protection of the geologic, hydrologic, paleontological, scenic, scientific, educational, wildlife, and recreational resources of the San Luis Valley. Much of the acquired land lies adjacent to the extensively vegetated sand sheet region of the San Luis Valley. The acquired land is valuable habitat for waterfowl, shorebirds, other migratory birds, and a variety of other wildlife including rare and endemic species.

Yukon Delta NWR, Alaska

A land exchange, located within the Yukon Delta National Wildlife Refuge, with NIMA Corporation was completed in June 2010. The exchange, 29 years in the making, consolidated NIMA Corporation's Alaska Native Claims Settlement Act lands, including traditional use areas, into a contiguous tract on Nunivak Island. Approximately 21,000 surface acres and 69,000 subsurface acres of federal ownership were exchanged for approximately 33,000 acres of quality wildlife habitat in the Dall Lake area of the Yukon-Kuskokwim Delta. The Delta is a rich complex of low-lying plain dotted with innumerable lakes, ponds, marshes and streams. The Delta supports one of the largest aggregations of water birds in the world. Nesting and brood-rearing habitats for waterfowl, shorebirds, and seabirds give the Refuge national significance. In terms of both density and species diversity, the Delta is the most important shorebird nesting area in the country. Over 1,000,000 ducks and 500,000 geese breed there annually.

STATE	POTENTIAL EXCHANGES	ACRES TO BE ACQUIRED	MANAGEMENT COSTS
ALASKA	AK Maritime NWR - Isanotski	4,800	\$10,000
	AK Maritime NWR - Akutan Corp	18,800	\$10,000
	AK Maritime NWR - Shumagin Corp	6,700	\$10,000
	Alaska Peninsula NWR – Oceanside	7,375	\$10,000
	Izembek NWR – King Cove	52,000	\$1,000,000
	Kenai NWR – CIRI	3,000.00	\$20,000
	Selawik NWR – NANA Corp	Undetermined	\$5,000
	Yukon Delta NWR – Cherfornak	40,000	\$60,000
	Yukon Delta NWR - NIMA Corp	Undetermined	\$5,000
	Yukon Delta NWR – Sea Lion Corp	Undetermined	\$65,000
	Yukon Delta NWR – Toksook Bay	29,300	\$55,000
CALIFORNIA	Bitter Creek NWR	297	\$10,000
	Bitter Creek NWR	0.1	\$10,000
	Bitter Creek NWR	3.74	\$22,000
	Don Edwards San Francisco Bay NWR	2.98	\$75,000
COLORADO	Arapaho NWR	1,700	\$40,000
	Rocky Flats NWR	640	\$45,000
FLORIDA	Archie Carr NWR	10	\$5,000
	Lake Wales Ridge NWR	2.75	\$20,000
	Pelican Island NWR	47	\$10,000
ILLINOIS	Crab Orchard NWR	71	\$10,000
	Meredoisia NWR	Undetermined	\$10,000
INDIANA	Patoka NWR	Undetermined	\$20,000
IOWA	Union Slough NWR	40	\$10,000
LOUISIANA	Red River NWR	576	\$55,000
MASSACHUSETTS	Assabet River NWR	350	\$50,000
	Great Meadows NWR	5	\$15,000
	Nantucket NWR	300	\$50,000
	Parker River NWR	77	\$20,000
	Silvio O. Conte NFWR	210	\$50,000
MICHIGAN	Shiawassee NWR	337	\$50,000
MINNESOTA	Jackson County WPA	2	\$25,000
	Minnesota Valley NWR	279.6	\$25,000
	Otter Tail County WPA	2	\$10,000
	Polk County WPA	4	\$10,000
	Pope County WPA	40	\$10,000
	Tamarac NWR	10	\$10,000
	Upper Mississippi River NW&FR	2	\$10,000

STATE	POTENTIAL EXCHANGES	ACRES TO BE ACQUIRED	MANAGEMENT COSTS
MISSISSIPPI	T. Roosevelt NWR	1,216	\$30,000
MONTANA	Pablo NWR	2	\$10,000
NEBRASKA	North Platte NWR	5	\$5,000
	Rainwater Basin WMD	160	\$25,000
NEVADA	Sheldon NWR – Ruby Pipeline	20	\$30,000
	Stillwater NWR	500	\$20,000
NORTH DAKOTA	Various North Dakota WPA's & WMA's	100	\$80,000
NEW JERSEY	E. B. Forsythe NWR	500	\$100,000
PUERTO RICO	Vieques NWR	96.41	\$15,000
SOUTH CAROLINA	Carolina Sandhills NWR	269	\$10,000
SOUTH DAKOTA	Various South Dakota WPA's & WMD's	100	\$50,000
	South Dakota WMD State Land	4,022	\$15,000
TENNESSEE	Lower Hatchie NWR	1.73	\$10,000
TEXAS	Lower Rio Grande Valley - Hildalgo County Irrigation District #3	5	\$5,000
	Lower Rio Grande Valley NWR FM 800	5.6	\$2,000
	Lower Rio Grande Valley NWR – Agriculture Investment Associates	2,700	\$45,000
	Lower Rio Grande Valley NWR – Fred Shuster	80	\$20,000
VERMONT	Silvio O. Conte NFWR	100	\$25,000
WISCONSIN	Fondu Lac County WPA	113.36	\$15,000
	Neceda WMA	40	\$10,000
	Upper MS River NWFR	280	\$10,000
	Sheboygan WPA	15	\$10,000
	Whittelsey Creek NWR	2	\$5,000
WYOMING	Cokeville Meadows NWR	70	\$25,000
	Totals	147,087.27	\$2,469,000

Land Acquisition Projects for FY 2012

The following list of proposed land acquisition projects is the current set of land acquisition priorities that has been vetted and approved by bureau and Departmental leadership to meet the most urgent programmatic needs during fiscal year 2012. For planning purposes, the Department has assumed the 2011 PB level for each on-going project in determining the 2012 funding requirements. If the appropriation level for land acquisition is amended for 2011 during the course of the year, the project priorities will be reviewed and adjusted to accommodate the total amount appropriated.

Budget Priority	Project	Region	State	Project Request	Estimated Acres
1	Alaska Maritime NWR	7	AK	\$ 400,000	613
2	Silvio O. Conte NWR	5	CT/NH/VT/MA	\$ 6,500,000	812
3	Laguna Atascosa NWR	2	TX	\$ 1,200,000	343
4	St. Marks NWR	4	FL	\$ 4,000,000	2,350
5	Cache River NWR	4	AR	\$ 4,250,000	1,700
6	Savannah NWR	4	GA	\$ 1,250,000	100
7	Lower Suwannee NWR	4	FL	\$ 1,000,000	667
8	Lower Rio Grande Valley NWR	2	TX	\$ 2,565,000	1,500
9	Upper Mississippi River NW&FR	3	IA	\$ 2,750,000	690
10	Waccamaw NWR	4	SC	\$ 1,000,000	500
11	Yukon Delta NWR	7	AK	\$ 500,000	1,000
12	Ernest F. Hollings ACE Basin NWR	4	SC	\$ 750,000	582
13	San Joaquin River NWR	8	CA	\$ 4,000,000	482
14	North Dakota WMA	6	ND	\$ 1,500,000	4,615
15	Togiak NWR	7	AK	\$ 1,200,000	720
16	Blackwater NWR	5	MD	\$ 1,500,000	722
17	Northern Tallgrass Prairie NWR	3	MN	\$ 1,500,000	750
18	Cape Romain NWR	4	SC	\$ 750,000	110
19	Dakota Tallgrass Prairie WMA	6	SD	\$ 1,500,000	3,333
20	Big Muddy NF&WR	3	MO	\$ 387,000	193
21	Flint Hills Legacy Conservation Area	6	KS	\$ 5,000,000	16,667
22	Chickasaw NWR	4	TN	\$ 1,000,000	285
23	Cypress Creek NWR	3	IL	\$ 700,000	375
24	Anahuac NWR	2	TX	\$ 1,000,000	3,333
25	Hakalau Forest NWR	1	HI	\$ 3,713,000	4,900
26	Balcones Canyonlands NWR	2	TX	\$ 2,250,000	523
27	Nestucca Bay NWR	1	OR	\$ 2,000,000	271
28	Lower Hatchie NWR	4	TN	\$ 1,000,000	333
29	San Bernard NWR	2	TX	\$ 1,400,000	906
30	Edwin B. Forsythe NWR	5	NJ	\$ 500,000	42
31	Grasslands WMA	8	CA	\$ 3,040,000	1,415
32	Humboldt Bay NWR	8	CA	\$ 2,500,000	335
33	Rocky Mountain Front Conservation Area	6	MT	\$ 8,000,000	19,277

Budget Priority	Project	Region	State	Project Request	Estimated Acres
34	Ottawa NWR	3	OH	\$ 500,000	135
35	San Pablo Bay NWR	8	CA	\$ 2,500,000	525
36	St. Vincent NWR	4	FL	\$ 1,350,000	5
37	Nisqually NWR	1	WA	\$ 1,500,000	270
38	Yukon Flats NWR	7	AK	\$ 600,000	1,200
39	Trinity River NWR	2	TX	\$ 500,000	550
40	Red Rock Lakes NWR	6	MT	\$ 1,500,000	300
41	Willapa NWR	1	WA	\$ 500,000	170
42	Sacramento River NWR	8	CA	\$ 2,500,000	225
43	Rachel Carson NWR	5	ME	\$ 750,000	116
44	Tulare Basin WMA	8	CA	\$ 2,000,000	1,000
45	Cahaba River NWR	4	AL	\$ 1,000,000	500
46	Middle Mississippi River NWR	3	MO	\$ 700,000	175
47	Innoko NWR	7	AK	\$ 300,000	480
48	Alligator River NWR	4	NC	\$ 1,000,000	1,194
49	San Diego NWR	8	CA	\$ 2,000,000	120
50	Cherry Valley NWR	5	PA	\$ 500,000	86
51	Kanuti NWR	7	AK	\$ 300,000	600
52	Patoka River NWR	3	IN	\$ 900,000	585
53	Tualatin River NWR	1	OR	\$ 750,000	150
54	Stone Lakes NWR	8	CA	\$ 500,000	112
55	Umbagog NWR	5	ME	\$ 1,500,000	2,717
56	Rappahannock River NWR	5	VA	\$ 335,000	125
57	Crane Meadows NWR	3	MN	\$ 500,000	230
58	Bear River MBR	6	UT	\$ 1,400,000	466
59	Arapaho NWR	6	CO	\$ 500,000	700
60	Neches River NWR	2	TX	\$ 11,000,000	6,688
61	Bayou Teche NWR	4	LA	\$ 500,000	415
62	Turnbull NWR	1	WA	\$ 500,000	250
63	Highlands Conservation		NY/PA/CT/NJ	\$ 5,000,000	N/A
	Total			\$ 113,990,000	90,533

ALASKA MARITIME NATIONAL WILDLIFE REFUGE

Alaska

Acquisition Authority: Alaska National Interest Lands Conservation Act (P.L. 96-487), Fish and Wildlife Act of 1956

FY 2012 Budget Priority: No. 1 of 63

Location: Bering Sea, approximately 750 miles southwest of Anchorage

Congressional Districts: Alaska, At Large **FWS Region 7**

Total LWCF Appropriations: \$5,588,971

FY 2012 Budget Request: \$400,000

Acquisition Status:

	<u>Ownerships</u>	<u>Acres</u>	<u>Cost</u>	<u>\$/Acre</u>
Acquired Fee through FY 2010	8	11,059	\$7,677,892	\$694
Acquired Easement through FY 2010	0	0	0	0
Acquired Exchange through FY 2010	0	0	0	0
Acquired Donation through FY 2010	2	*26,984	0	0
Acquired Other means through FY 2010	0	0	0	0
Total Acquired through FY 2010	10	38,043	\$7,677,892	\$202
Planned FY 2011	1	40	\$16,000	\$400
Proposed FY 2012	2	613	\$400,000	\$653
Remaining	11	152,004	\$123,107,708	\$810
Totals	24	190,700	\$131,201,600	\$688

*All easement interests

Purpose of Acquisition: To conserve and restore seabird colonies and contribute to landscape scale conservation within the Western Alaska Landscape Conservation Cooperative.

Project Cooperators: Alaska Native Corporations, State of Alaska

Project Description: The Service would use funds to acquire two islands. The smaller of the islands, Flat Island, only 13 acres in size, supports regionally significant seabird colonies. At least five species nest here, including about 30,000 tufted puffins and small colonies of common murrens, black-legged kittiwakes, glaucous-winged gulls, and black oystercatchers. Cherni Island is a 600-acre island that supports 11 seabird species, including large nesting populations of double-crested, red-faced, and pelagic cormorants (about 2,500 birds).

These islands provided habitat for large concentrations of burrow-nesting seabirds. However, the presence of introduced predators has been detrimental to these vulnerable species. Acquiring these island habitats in their entirety would enable the Service to provide long-term protection of seabird colonies, remove introduced predators if necessary, restrict incompatible uses, and restore seabird habitat.

O&M: The Service anticipates no additional operations or maintenance costs associated with this acquisition as the parcel is located within refuge boundaries and would add no additional workload.

SILVIO O. CONTE NATIONAL FISH AND WILDLIFE REFUGE
Connecticut, Massachusetts, New Hampshire, Vermont

Acquisition Authority: The Silvio O. Conte National Fish and Wildlife Refuge Act (P.L.102-212)

FY 2012 Budget Priority: No. 2 of 63

Location: Connecticut, Massachusetts, New Hampshire, Vermont

Congressional Districts: Connecticut, Districts 1, 2, and 3 **FWS Region 5**
 Massachusetts, Districts 1 and 2
 New Hampshire, District 2
 Vermont, At Large

Total LWCF Appropriations: \$19,685,168

FY 2012 Budget Request: \$6,500,000

Acquisition Status:

	<u>Ownerships</u>	<u>Acres</u>	<u>Cost</u>	<u>\$/Acre</u>
Acquired Fee through FY 2010	53	34,063	\$22,141,456	\$650
Acquired Easement through FY 2010	1	166	\$126,000	\$759
Acquired Exchange through FY 2010	0	0	\$16,236	\$0
Acquired Donation through FY 2010	5	134	\$0	\$0
Acquired Other means through FY 2010	0	0	\$509,070	\$0
Total Acquired through FY 2010	59	34,363	\$22,792,762	\$663
Planned FY 2011	15	4,000	\$6,000,000	\$1,500
Proposed FY 2012	15	812	\$6,500,000	\$8,005
Remaining	1,919	39,220	\$28,606,238	\$729
Totals	2,008	78,395	\$63,899,000	\$815

Purpose of Acquisition: To protect fisheries and wildlife resources and provide public access to refuge lands.

Project Cooperators: The Trust for Public Land and The Nature Conservancy.

Project Description: Funds would acquire fee title to tracts in the Fort River Division that would contribute towards the protection of a large grassland project. Recovery and long-term viability of habitats for the upland sandpiper, dwarf wedge mussel, and fish which rely on the longest, unobstructed tributary to the Connecticut River in Massachusetts. Tracts in the Nulhegan Basin Division of the northern boreal forest and associated wetland complex in Vermont and tracts in the Salmon Brook Division in Connecticut will provide wildlife-dependent recreation and education opportunities.

O&M: The Service anticipates no additional operations or maintenance costs associated with this acquisition as the parcel is located within refuge boundaries and would add no additional workload.

LAGUNA ATASCOSA NATIONAL WILDLIFE REFUGE

Texas

Acquisition Authority: Fish and Wildlife Act of 1956, Endangered Species Act of 1973

FY 2012 Budget Priority: No. 3 of 63

Location: Approximately 290 miles south of San Antonio, 360 miles southwest of Houston, and 213 miles east of Laredo, TX

Congressional Districts: Texas, Districts 27 and 28 **FWS Region 2**

Total LWCF Appropriations: \$1,250,000

FY 2012 Budget Request: \$1,200,000

Acquisition Status:

	<u>Ownerships</u>	<u>Acres</u>	<u>Cost</u>	<u>\$/Acre</u>
Acquired Fee through FY 2010	5	1,175	\$1,382,643	\$1,177
Acquired Easement through FY 2010	1	113	\$0*	\$0
Acquired Exchange through FY 2010	0	0	\$0	\$0
Acquired Donation through FY 2010	1	2,468	\$0	\$0
Acquired Other means through FY 2010	18	86,274	\$12,620,316	\$146
Total Acquired through FY 2010	25	90,030	\$14,002,959	\$156
Planned FY 2011	1	286	\$1,000,000	\$3,497
Proposed FY 2012	1	343	\$1,200,000	\$3,499
Remaining	291	62,655	\$313,275,000	\$5,000
Totals	318	153,314	\$329,477,959	\$2,149

* This was a donated conservation easement.

Purpose of Acquisition: To protect essential habitat for numerous endangered species and resting area for migratory waterfowl.

Project Cooperators: The Nature Conservancy, Audubon Society, and The Conservation Fund.

Project Description: Funds would acquire fee title to 343 acres of essential habitat for endangered species and resting area for migratory waterfowl. The Refuge provides much needed resting habitat of scrub brush and wetlands for neotropical birds migrating north in the spring after crossing the Gulf of Mexico. As the largest protection area of natural habitat left in the Lower Rio Grande Valley, the Refuge draws a multitude of wildlife, including redhead ducks, sandhill cranes, and a mix of wildlife found nowhere else. In addition, the Refuge provides recreational opportunities for photography and bird watching that are strongly supported by the local community.

O&M: The Service would require \$5,000 for fencing and re-vegetating cropland to reestablish brushland. Funds would come from the Refuge System base funding.

ST. MARKS NATIONAL WILDLIFE REFUGE

Florida

Acquisition Authority: Fish and Wildlife Act of 1956

FY 2012 Budget Priority: No. 4 of 63

Location: In the Panhandle of the North Florida coast, 24 miles south of Tallahassee

Congressional Districts: Florida, District 2 **FWS Region 4**

Total LWCF Appropriations: \$6,303,335

FY 2012 Budget Request: \$4,000,000

Acquisition Status

	<u>Ownerships</u>	<u>Acres</u>	<u>Cost</u>	<u>\$/Acre</u>
Acquired Fee through FY 2010	39	65,820	\$4,387,813	\$67
Acquired Easement through FY 2010	5	311	\$1	\$0
Acquired Exchange through FY 2010	13	2,610	\$0	\$0
Acquired Donation through FY 2010	5	364	\$0	\$0
Acquired Other means through FY 2010	1	134	\$500	\$4
Total Acquired through FY 2010	63	69,239	\$4,388,314	\$63
Planned FY 2011	1	750	\$1,000,000	\$1,333
Proposed FY 2012	1	2,350	\$4,000,000	\$1,702
Remaining	296	39,908	\$59,624,500	\$1,494
Totals	361	112,247	\$69,012,814	\$615

Purpose of Acquisition: Conserve and enhance populations of threatened, endangered, rare and imperiled plants and animals and their native habitats. Provide suitable black bear habitat, including corridors and links to major population center habitat. Provide high-quality habitat for migratory birds, shorebirds, waterbirds, and marshbirds. Provide public recreation opportunities for hunting and fishing.

Project Cooperators: The Nature Conservancy, Florida Chapter of the Wildlife Society, The Florida Natural Areas Inventory, St. Marks Refuge Association, Florida Trail Association, Blue Goose Alliance, Apalachee Audobon Society, and Florida Wildlife Federation.

Project Description: Funds would acquire fee title to approximately 2,350 acres owned by The Nature Conservancy. Acquisition of this parcel would benefit federally endangered species such as red-cockaded woodpecker, woodstork, and flatwood salamanders, as well as a variety of resident and migratory species such as American bald eagle, wood duck, swallow-tailed kite, and state-listed Florida black bear. The project was designated an Important Bird Area and a Land Management Research and Demonstration Site for Longleaf Pine Ecosystems, and it is a key segment of the Florida National Scenic Trail.

O&M: The Service estimates annual costs of \$5,000 for Service signage, boundary markings, and fencing, which the Service would fund out of Refuge System base funding.

CACHE RIVER NATIONAL WILDLIFE REFUGE

Arkansas

Acquisition Authority: Emergency Wetlands Resources Act of 1986

FY 2012 Budget Priority: No. 5 of 63

Location: Adjacent to the White River, Cache River and Bayou DeView tributaries, from State Highway 79 near Clarendon to Grubbs

Congressional Districts: Arkansas, District 1 **FWS Region 4**

Total LWCF Appropriations: \$7,740,013

FY 2012 Budget Request: \$4,250,000

Acquisition Status:

	<u>Ownerships</u>	<u>Acres</u>	<u>Cost</u>	<u>\$/Acre</u>
Acquired Fee through FY 2010	104	64,971	\$56,614,146	\$871
Acquired Easement through FY 2010	0	0	\$0	\$0
Acquired Exchange through FY 2010	6	2,154	\$134,000	\$62
Acquired Donation through FY 2010	2	945	\$0	\$0
Acquired Other means through FY 2010	1	0	\$115,000	\$0
Total Acquired through FY 2010	113	68,070	\$56,863,146	\$835
Planned FY 2011	1	1,250	\$3,000,000	\$2,400
Proposed FY 2012	1	1,700	\$4,250,000	\$2,500
Remaining	355	116,957	\$235,685,812	\$2,015
Totals	470	184,977	\$297,098,958	\$1,606

Purpose of Acquisition: To protect fisheries and wildlife resources and provide public access to refuge lands.

Project Cooperators: The Wildlife Federation, The Nature Conservancy, The Conservation Fund, Audubon Society, and Arkansas Game and Fish Commission.

Project Description: Funding would acquire fee title to approximately 1,700 acres of a 3,100-acre property from The Conservation Fund. This would be a phased acquisition as funding becomes available. This tract contains some of the best quality and last remaining old growth hardwood forest in the area. This acquisition would contribute greatly to the Cache River project area, which encompasses some of the largest remaining contiguous blocks of bottomland hardwood forest in the Lower Mississippi Valley and some of the largest remaining expanses of forested wetlands on any tributary within the Mississippi Alluvial Valley. The area is considered the most important wintering area for mallards in North America, and one of the most important for pintails, teal, Canada geese, and other migratory waterfowl. The wetland and aquatic habitats of the Cache/Lower White Rivers ecosystem support 52 species of mammals, 232 species of birds, 48 species of reptiles and amphibians, and approximately 95 species of freshwater fish.

O&M: To properly mark the boundary for 1700 acres the Service would have an initial cost of approximately \$5,000 for signs, posts, rivets, nails, paint, and boundary tags which the Service would fund from Refuge System base funding. Once initially marked, annual costs would be <\$300 for maintenance.

SAVANNAH NATIONAL WILDLIFE REFUGE
Georgia, South Carolina

Acquisition Authority: Fish and Wildlife Act of 1956

FY 2012 Budget Priority: No. 6 of 63

Location: In the heart of the Lowcountry, bordered on the west by sandhill ridges and on the east by the Atlantic Ocean, extending from Georgetown, South Carolina to St. Mary's, Georgia

Congressional Districts: South Carolina, District 1 **FWS Region 4**

Total LWCF Appropriations: \$2,385,800

FY 2012 Budget Request: \$1,250,000

Acquisition Status:

	<u>Ownerships</u>	<u>Acres</u>	<u>Cost</u>	<u>\$/Acre</u>
Acquired Fee through FY 2010	15	27,284	\$4,896,971	\$179
Acquired Easement through FY 2010	2	28	\$0	\$0
Acquired Exchange through FY 2010	7	961	\$92,385	\$96
Acquired Donation through FY 2010	1	37	\$0	\$0
Acquired Other means through FY 2010	2	864	\$0	\$0
Total Acquired through FY 2010	27	29,174	\$4,989,356	\$171
Planned FY 2011	1	110	\$1,375,000	\$12,500
Proposed FY 2012	1	100	\$1,250,000	\$12,500
Remaining	2	17,141	\$211,173,520	\$12,320
Totals	31	46,525	\$218,787,876	\$4,703

Purpose of Acquisition: To conserve and protect virgin bottomland hardwood migratory bird habitat and to prevent detrimental impacts caused by development on wetlands habitat.

Project Cooperators: The Trust for Public Land

Project Description: Funding would acquire fee title to approximately 100 acres of a 388-acre property from The Trust for Public Land. This would be a phased acquisition as funding becomes available. The addition of this tract would complement the Refuge by adding the highly productive ecotone between the tidal wetlands and upland forests and fields. This area is used by migratory birds such as swallow-tailed kites, Swainson’s warblers, and prothonotary warblers. The property contains several remnant rice fields. The dikes have long since breached; however, these wetlands provide prime habitat for wildlife such as king rails, American alligators, and wood duck. This acquisition would provide road access to the adjacent 2,000-acre Abercorn Island, which is currently only accessible by boat. Having road access to Abercorn Island would allow the Service to increase public use activities at the Refuge and provide easier access for refuge maintenance and law enforcement.

O&M: The Service estimates annual costs of \$3,000 for Service signage, boundary markings, and fencing which the Service would fund from Refuge System base funding.

**LOWER SUWANNEE NATIONAL WILDLIFE REFUGE
Florida**

Acquisition Authority: Fish and Wildlife Act of 1956

FY 2012 Budget Priority: No. 7 of 63

Location: Approximately 50 miles south-west of Gainesville, along the southern edge of the Big Bend Region of Florida’s west coast

Congressional Districts: Florida, District 2 **FWS Region 4**

Total LWCF Appropriations: \$15,214,500

FY 2012 Budget Request: \$1,000,000

Acquisition Status:

	<u>Ownerships</u>	<u>Acres</u>	<u>Cost</u>	<u>\$/Acre</u>
Acquired Fee through FY 2010	8	51,984	\$14,060,660	\$270
Acquired Easement through FY 2010	0	0	\$0	\$0
Acquired Exchange through FY 2010	3	342	\$52,500	\$154
Acquired Donation through FY 2010	2	861	\$0	\$0
Acquired Other means through FY 2010	3	1,060	\$0	\$0
Total Acquired through FY 2010	16	54,247	\$14,113,160	\$260
Planned FY 2011	0	0	\$0	\$0
Proposed FY 2012	1	667	\$1,000,000	\$1,499
Remaining	161	29, 104	\$34,875,200	\$1,198
Totals	178	84,018	\$49,988,360	\$595

Purpose of Acquisition: To preserve and protect fish and wildlife habitat for the benefit of waterfowl, shore and wading birds, neotropical migratory birds, and at least 11 federally endangered species including the Gulf sturgeon and West Indian manatee.

Project Cooperators: The Nature Conservancy, The Conservation Fund, and Lower Suwannee Water Management District.

Project Description: Funding this project would preserve and protect approximately 667 acres of fish and wildlife habitat for the benefit of waterfowl, shore and wading birds, neotropical migratory birds, and at least 11 federally endangered species including the Gulf sturgeon and West Indian manatee. The subject property includes habitats of upland scrub, hardwood hammock, marshes, and tributaries of the Suwannee River, the last remaining river where significant spawning migrations of Gulf sturgeon still occur. This inholding abuts the Refuge’s highest public use and recreation area, and if not acquired by the Service, residential homes could be built on the property.

O&M: The Service anticipates no additional operations and maintenance costs associated with this acquisition as the parcel is located within refuge boundaries and would add no additional workload.

LOWER RIO GRANDE VALLEY NATIONAL WILDLIFE REFUGE

Texas

Acquisition Authority: Fish and Wildlife Act of 1956, Refuge Recreation Act of 1962

FY 2012 Budget Priority: No. 8 of 63

Location: South Texas coast approximately one hour southeast of McAllen, TX

Congressional Districts: Texas, Districts 15, 27, and 28 **FWS Region 2**

Total LWCF Appropriations: \$30,781,620

FY 2012 Budget Request: \$2,565,000

Acquisition Status:

	<u>Ownerships</u>	<u>Acres</u>	<u>Cost</u>	<u>\$/Acre</u>
Acquired Fee through FY 2010	297	78,385	\$73,189,577	\$934
Acquired Easement through FY 2010	*6	**5,616	\$1,412,751	\$252
Acquired Exchange through FY 2010	0	0	\$0	\$0
Acquired Donation through FY 2010	12	9,142	\$0	\$0
Acquired Other means through FY 2010	4	953	\$0	\$0
Total Acquired through FY 2010	319	94,096	\$74,602,328	\$793
Planned FY 2011	1	2,500	\$2,500,000	\$1,000
Proposed FY 2012	3	1,500	\$2,565,000	\$1,710
Remaining	792	34,404	\$118,099,000	\$3,433
Totals	1,115	132,500	\$197,766,328	\$1,493

* Out of six conservation easements acquired, two were donated, raising the amount of easement ownerships from four to six.

** Four of the six conservation easements were acquired with LWCF funds (2,566 acres), and two were donated (3,050 acres), for a total of 5,616 acres.

Purpose of Acquisition: To protect native subtropical brush lands and protect, enhance, and restore other adjacent lands to protect the diverse biotic communities of the area.

Project Cooperators: The Nature Conservancy, The Conservation Fund, National Audubon Society, Ducks Unlimited, and North American Butterfly Association.

Project Description: Funding would acquire a portion of a 3,000-acre conservation easement on land that comprises the best acreage available for the Refuge from willing sellers. The project has 11 distinct biotic communities, which provide habitat for resident and migrating species of birds, butterflies, and mammals. Nearly 400 species of birds, 300 species of butterflies, and 1,100 species of plants have been noted in the four-county project area. The area not only provides an important migration corridor for neotropical migratory bird species, but also provides sanctuary for a number of endangered species of plants and animals, including the piping plover, northern aplomado falcon, ocelot, and jaguarandi.

O&M: The Service anticipates minimal expenses beyond an initial \$10,000 for signage and posting of easement acreage which the Service would fund from Refuge System base funding.

UPPER MISSISSIPPI RIVER NATIONAL WILDLIFE AND FISH REFUGE
Iowa, Illinois, Minnesota, Wisconsin

Acquisition Authority: Act of June 7, 1924; Act of March 4, 1925; Act of May 12, 1928; Act of April 10, 1928; Act of June 18, 1934; Act of June 13, 1944; P.L. 87-44; P.L. 105-312; Emergency Wetlands Resources Act

FY 2012 Budget Priority: No. 9 of 63

Location: 261 miles along the Mississippi River from Wabasha, MN to Rock Island, IL

Congressional Districts: Minnesota, District 1
 Iowa, Districts 1 and 4
 Illinois, Districts 16 and 17
 Wisconsin, District 3
FWS Region 3

Total LWCF Appropriations: \$6,018,000

FY 2012 Budget Request: \$2,750,000

Acquisition Status:

	<u>Ownerships</u>	<u>Acres</u>	<u>Cost[†]</u>	<u>\$/Acre</u>
Acquired Fee through FY 2010	1,163	209,110	\$5,857,824	\$28
Acquired Easement through FY 2010	4	1	\$5,051	\$5,051
Acquired Exchange through FY 2010	0	0	\$0	\$0
Acquired Donation through FY 2010	23	487	\$0	\$0
Acquired Other means through FY 2010	1	1	\$35	\$35
Total Acquired Through FY 2010	1,191	209,599	\$5,862,910	\$28
Planned FY 2011	8	625	\$2,500,000	\$4,000
Proposed FY 2012	3	690	\$2,750,000	\$3,986
Reprogrammed FY 2008 ^{††}	0	0	\$300,000	\$0
Reprogrammed FY 2009 ^{††}	0	0	\$1,000,000	\$0
Remaining	338	20,831	\$25,862,496	\$1,837
Totals	1,540	231,745	\$38,275,406	\$165*

[†] Includes incidental acquisition costs and migratory bird funds.

^{††} Amount reprogrammed from Great River NWR to Upper Mississippi NW & FR.

* Approximately 1/2 of land was acquired by the Corp of Engineers, and is managed by the Service, hence the low \$/acre value.

Purpose of Acquisition: To protect, restore, and manage grassland and wetland habitat for migratory birds, including waterfowl, resident wildlife, federal and state threatened and endangered species, and public recreation.

Project Cooperators: U.S. Army Corps of Engineers, Ducks Unlimited, The Nature Conservancy, Minnesota Department of Natural Resources (DNR), Wisconsin DNR, Iowa DNR, Illinois DNR, and Friends of the Upper Mississippi Refuge.

Project Description: Funds would acquire approximately 690 fee acres from three landowners located in Houston County, MN, and La Crosse County, WI. These acquisitions would preserve critical feeding and resting habitat for waterfowl and other birds in the Mississippi Flyway. They would protect the extensive wetland complexes that perform the functions of flood control and nutrient recycling.

The Refuge consists of wooded islands, sandbars, deep water, wet meadows and other wetlands, and extends 261 miles down the Mississippi River. It supports a wide variety of wildlife, including 306 bird,

119 fish, 42 mussel, and 45 reptile and amphibian species. Up to 500,000 canvasback ducks and 30,000 tundra swans pass through annually. The Refuge also provides important habitat for the federally endangered Higgins' eye pearly mussel and the Massasauga rattlesnake (candidate).

O&M: The Service estimates an initial cost of \$10,000 for restoration and enhancement work (spraying, mowing, burning, and fencing supplies and signage) which the Service would fund from Refuge base funding.

WACCAMAW NATIONAL WILDLIFE REFUGE
South Carolina

Acquisition Authority: Fish and Wildlife Act of 1956

FY 2012 Budget Priority: No. 10 of 63

Location: Coastal southeast South Carolina

Congressional Districts: South Carolina, District 1 **FWS Region 4**

Total LWCF Appropriations: \$15,719,892

FY 2012 Budget Request: \$1,000,000

Acquisition Status:

	<u>Ownerships</u>	<u>Acres</u>	<u>Cost</u>	<u>\$/Acre</u>
Acquired Fee through FY 2010	83	11,175	\$15,475,609	\$1,385
Acquired Easement through FY 2010	1	1	\$0	\$0
Acquired Exchange through FY 2010	0	0	\$0	\$0
Acquired Donation through FY 2010	3	1,719	\$0	\$0
Acquired Other means through FY 2010	1	7,661	\$0	\$0
Total Acquired through FY 2010	88	20,556	\$15,475,609	\$753
Planned FY 2011	202	738	\$2,125,000	\$2,879
Proposed FY 2012	3	500	\$1,000,000	\$2,000
Remaining	117	36,038	\$93,987,000	\$2,608
Totals	410	57,832	\$112,587,609	\$1,947

Purpose of Acquisition: To preserve and protect bottomland hardwood forest providing habitat for colonial nesting birds, neotropical birds, wintering waterfowl, and old-growth pine communities supporting populations of red-cockaded woodpeckers.

Project Cooperators: The Nature Conservancy, Waccamaw Audubon Society, National Fish and Wildlife Foundation, Town and Country Garden Club, SEEWEE Association, Historic Ricefields, South Carolina Department of Transportation, and South Carolina Coastal Conservation League.

Project Description: Funding would acquire fee title to three tracts comprising approximately 500 acres. Acquisition of these tracts would protect the upper watershed of a unique black water seep that runs into the Refuge and is important to several rare salamander species found in only a few isolated locations in Horry County, South Carolina. These properties offer a diverse wetland and open lake complex that, if properly managed, would provide important foraging habitat for federally-endangered wood storks, which have a rookery less than a mile from the tract, and other wintering waterfowl. With this funding, the Service would continue acquisition of approximately 200 lots owned by willing sellers in the Paradise Point subdivision on Sandy Island. The lots would be allowed to revert back to tidal freshwater wetland and forested habitats to protect water quality and prevent erosion on the south side of Sandy Island.

O&M: The Service anticipates no additional operations or maintenance costs associated with these acquisitions as the parcels are located within refuge boundaries and would add no additional workload.

YUKON DELTA NATIONAL WILDLIFE REFUGE

Alaska

Acquisition Authority: Alaska National Interest Lands Conservation Act (P.L. 96-487), Fish and Wildlife Act of 1956

FY 2012 Budget Priority: No. 11 of 63

Location: Western Alaska, approximately 350 miles west of Anchorage

Congressional Districts: Alaska, At Large **FWS Region 7**

Total LWCF Appropriations: \$2,480,108

FY 2012 Budget Request: \$500,000

Acquisition Status:

	<u>Ownerships</u>	<u>Acres*</u>	<u>Cost</u>	<u>\$/Acre</u>
Acquired Fee through FY 2010	9	1,200	\$768,000	\$640
Acquired Easement through FY 2010	0	0	\$0	\$0
Acquired Exchange through FY 2010	3	24,238	\$0	\$0
Acquired Donation through FY 2010	0	0	\$0	\$0
Acquired Other means through FY 2010	0	0	\$0	\$0
Total Acquired through FY 2010	12	25,438	\$768,000	\$30
Planned FY 2011**	5	66,640	\$1,632,000	\$24
Proposed FY 2012	7	1,000	\$500,000	\$500
Remaining	34	66,240	\$42,938,480	\$648
Totals	58	159,318	\$45,838,480	\$288

* Totals include easements and exchanges that were not included in previous years.

** Planned FY 2011 includes 66,000 acres of an acquisition of conservation easement lands valued at \$1,188,000 (\$18/acre) which brings the per-acre down considerably.

Purpose of Acquisition: To promote landscape conservation and protect riparian habitat for birds, mammals, and native fishes.

Project Cooperators: Alaska Native Corporations and State of Alaska.

Project Description: Funds would acquire fee title to 1,000 acres in seven high-priority Native allotments. All are located on salmon rivers popular among recreational users. The Kisaralik is a pristine waterway that offers scenic views, wildlife observation, and sections of whitewater. The Kwethluk is a clear, braided river that offers a unique wilderness experience. Both rivers offer exceptional sport-fishing opportunities for salmon, rainbow trout, grayling, and Dolly Varden. River users might observe bears, foxes, moose, lynx, and many species of neotropical songbirds. All the parcels are owned by individual Native Alaskans who wish to sell for financial reasons, but prefer to sell to the Service, where the land will be protected but remain available for both recreational and subsistence uses.

All the acquisitions qualify for matching funds provided by a local land trust, the Southwestern Alaska Conservation Coalition.

O&M: The Service anticipates no additional operations or maintenance costs associated with this acquisition as the parcel is located within refuge boundaries and would add no additional workload.

ERNEST F. HOLLINGS ACE BASIN NATIONAL WILDLIFE REFUGE
South Carolina

Acquisition Authority: Fish and Wildlife Act of 1956

FY 2012 Budget Priority: No. 12 of 63

Location: Combahee Unit is located near Yemassee, South Carolina, and the Edisto Unit is on the old Grove Plantation near Adams Run, South Carolina

Congressional Districts: South Carolina, District 1 **FWS Region 4**

Total LWCF Appropriations: \$15,609,965

FY 2012 Budget Request: \$750,000

Acquisition Status:

	<u>Ownerships</u>	<u>Acres</u>	<u>Cost</u>	<u>\$/Acre</u>
Acquired Fee through FY 2010	7	11,834	\$12,447,541	\$1,052
Acquired Easement through FY 2010	0	0	\$0	\$0
Acquired Exchange through FY 2010	1	2	\$0	\$0
Acquired Donation through FY 2010	0	0	\$0	\$0
Acquired Other means through FY 2010*	1	0	\$89,636	\$0
Total Acquired through FY 2010	9	11,836	\$12,537,177	\$1,059
Planned FY 2011	0	0	\$0	\$0
Proposed FY 2012	1	582	\$750,000	\$1,289
Remaining	10	8,649	\$40,036,221	\$4,629
Totals	20	21,067	\$53,323,398	\$2,531

*Funds expended on a lease that is now expired.

Purpose of Acquisition: To protect and enhance habitat that is used extensively by endangered species, wading birds, shorebirds, migratory waterfowl, raptors, and other migratory birds.

Project Cooperators: Ducks Unlimited and The Nature Conservancy.

Project Description: Funding would allow the Service to acquire 582 fee acres of the last-remaining inholdings on Jehossee Island. The acquisition would protect the habitat of several migratory, endangered, and threatened species including the peregrine falcon, Eskimo curlew, and leatherback, Kemp’s ridley, and hawksbill sea turtles. The Refuge helps protect the largest undeveloped estuary along the Atlantic coast with rich bottomland hardwood and fresh and salt water marsh, which offer food and cover to at least 17 species of waterfowl, such as pintail, mallard, wood ducks, as well as bald eagles, wood storks, herons, egrets, and ibis.

O&M: The Service anticipates no additional operations or maintenance costs associated with these acquisitions as the parcels are located within refuge boundaries and would add no additional workload.

SAN JOAQUIN RIVER NATIONAL WILDLIFE REFUGE
California

Acquisition Authority: Endangered Species Act 1973

FY 2012 Budget Priority: No. 13 of 63

Location: Approximately 10 miles west of Modesto, California to the north and south of Highway 132

Congressional District: California, District 18 **FWS Region 8**

Total LWCF Appropriations: \$13,850,000

FY 2012 Budget Request: \$4,000,000

Acquisition Status:

	<u>Ownerships</u>	<u>Acres</u>	<u>Cost</u>	<u>\$/Acre</u>
Acquired Fee through FY 2010	8	7,148	\$25,725,448	\$3,599
Acquired Easement through FY 2010	3	3,289	\$15,947,894	\$4,849
Acquired Exchange through FY 2010	0	0	\$0	\$0
Acquired Donation through FY 2010	0	0	\$0	\$0
Acquired Other means through FY 2010	0	0	\$0	\$0
Total Acquired through FY 2010	11	10,437	\$41,673,342	\$3,993
Planned FY 2011	2	274	\$2,500,000	\$9,124
Proposed FY 2012	1	482	\$4,000,000	\$8,299
Remaining	3	2,722	\$21,826,658	\$8,019
Totals	17	13,915	\$70,000,000	\$5,031

Purpose of Acquisition: To protect native grasslands and wetlands essential for long-term survival of the Aleutian Canada goose. It will also protect a large piece of riparian habitat valuable to a variety of wildlife species.

Project Cooperators: State of California CALFED Bay Delta Grant Program

Project Description: Funds would acquire 482 acres in a perpetual conservation easement. The property is predominantly native, irrigated pasture. The biggest threat is residential development and the conversion from grasslands and wetlands habitat to croplands, orchards, or dairy operations that provide little or no benefit to wildlife. The acquisition of this perpetual conservation easement would provide long-term viability to the grassland and wetland ecosystem and provide a safe haven for migratory birds and other wildlife species.

O&M: The interest that the Service would acquire in the 482 acres is a perpetual conservation easement. For this reason, there would be little or no long-term management costs associated with this acquisition. The Service would fund any incidental expenses from Refuge System base funding.

NORTH DAKOTA WILDLIFE MANAGEMENT AREA

North Dakota

Acquisition Authority: Fish and Wildlife Act of 1956

FY 2012 Budget Priority: No. 14 of 63

Location: The Missouri Coteau, north and east of the Missouri River

Congressional Districts: North Dakota, At Large **FWS Region 6**

Total LWCF Appropriations: \$3,280,430

FY 2012 Budget Request: \$1,500,000

Acquisition Status:

	<u>Ownerships</u>	<u>Acres</u>	<u>Cost</u>	<u>\$/Acre</u>
Acquired Fee through FY 2010	0	0	\$0	\$0
Acquired Easement through FY 2010	141	45,375	\$3,278,869	\$72
Acquired Exchange through FY 2010	0	0	\$0	\$0
Acquired Donation through FY 2010	0	0	\$0	\$0
Acquired Other means through FY 2010	0	0	\$0	\$0
Total Acquired through FY 2010	141	45,375	\$3,278,869	\$72
Planned FY 2011	Multi	14,286	\$2,501,561	\$175
Proposed FY 2012	19	4,615	\$1,500,000	\$325
Remaining	Multi	235,724	\$46,616,170	\$198
Totals	Multi	300,000	\$53,896,600	\$180

Purpose of Acquisition: Funding would acquire perpetual easements to protect critical wildlife habitats of native grassland and associated wetlands located in the Prairie Pothole Region (PPR).

Project Cooperators: North Dakota Game & Fish Department, North Dakota Natural Resources Trust, Ducks Unlimited, Inc, and The Nature Conservancy.

Project Description: The PPR ecosystem consists of native mixed-grass prairie intermingled with high densities of temporary, seasonal, semi-permanent, and permanent wetlands that support breeding habitat for waterfowl, shorebirds, grassland birds and the endangered piping plover. The diversity of plants and animals that rely on this habitat make it one of the most unique and productive ecosystems in North America. The proposed funding would acquire perpetual grassland easements on approximately 19 ownerships covering 4,615 acres. Habitat fragmentation and loss due to conversion of wetland and grassland to cropland is the primary threat for wildlife species in the PPR. Conversion of grassland to cropland for bio-fuels production and loss of Conservation Reserve Program acres diminishes the natural function of the PPR ecosystem and its productivity for wildlife. This landscape level ecosystem protection maintains the natural habitat, provides long-term viability, and improves its health for the benefit of wildlife and people; at same time, it allows private ownership with restricted uses.

O&M: The Service anticipates spending a minimal amount for annual compliance over-flights, estimated at less than \$1,500 per year, which the Service would fund from Refuge System base funding.

TOGIAK NATIONAL WILDLIFE REFUGE

Alaska

Acquisition Authority: Alaska National Interest Lands Conservation Act (P.L. 96-487), Fish and Wildlife Act of 1956

FY 2012 Budget Priority: No. 15 of 63

Location: Southwestern Alaska, approximately 350 miles west of Anchorage

Congressional Districts: Alaska, At Large **FWS Region 7**

Total LWCF Appropriations: \$7,698,469

FY 2012 Budget Request: \$1,200,000

Acquisition Status:

	<u>Ownerships</u>	<u>Acres</u>	<u>Cost</u>	<u>\$/Acre</u>
Acquired Fee through FY 2010	40	5,536	\$6,238,000	\$1,127
Acquired Easement through FY 2010	0	0	0	0
Acquired Exchange through FY 2010	0	0	0	0
Acquired Donation through FY 2010	0	0	0	0
Acquired Other means through FY 2010	2	240	\$400,000	\$1,667
Total Acquired through FY 2010	42	5,776	6,638,000	\$1,149
Planned FY 2011	5	550	\$670,000	\$1,218
Proposed FY 2012	6	720	\$1,200,000	\$1,667
Remaining	69	12,474	\$14,873,336	\$1,192
Totals	122	19,520	\$23,381,336	\$1,198

Purpose of Acquisition: To protect world-class salmon and trout fisheries, threatened eiders, and to promote landscape-level conservation in the Western Alaska Landscape Conservation Cooperative.

Project Cooperators: The Conservation Fund, Southwestern Alaska Conservation Coalition, Alaska Native Corporations, and State of Alaska.

Project Description: Funds would acquire fee title to 720 acres in six riparian parcels within the Western Alaska Landscape Conservation Cooperative. Five parcels are located in the Kanektok River drainage within a designated Wilderness area. The Kanektok drainage sustains thriving populations of five species of pacific salmon, rainbow trout, char, lake trout, whitefish, smelt, and Arctic grayling. The river is invaluable to local subsistence and commercial users and attracts sport fishermen from around the world. The remaining parcel is located on the shores of Chagvan Bay. Extensive eelgrass beds support a wide variety of migrating geese and sea ducks, including brant, emperor geese, and threatened Steller’s and spectacled eiders. Neotropical migrants and at least 30 species of shorebirds are regular summer visitors. All six parcels provide vital habitats for moose, bears, wolves, wolverines, and caribou. All the parcels are owned by Native Alaskans who wish to sell for financial reasons, but prefer the lands remain undeveloped and available for subsistence uses. Acquisitions within the Refuge qualify for matching funds provided by a local land trust, the Southwestern Alaska Conservation Coalition.

O&M: The Service anticipates no additional operations or maintenance costs associated with this acquisition as the parcel is located within refuge boundaries and would add no additional workload.

**BLACKWATER NATIONAL WILDLIFE REFUGE
Maryland**

Acquisition Authority: Endangered Species Act of 1973

FY 2012 Budget Priority: No. 16 of 63

Location: Sixty-five miles southeast of Baltimore, in the south central portion of Dorchester County on Maryland’s Eastern Shore

Congressional Districts: Maryland, District 1 **FWS Region 5**

Total LWCF Appropriations: \$14,104,345

FY 2012 Budget Request: \$1,500,000

Acquisition Status:

	<u>Ownerships</u>	<u>Acres</u>	<u>Cost</u>	<u>\$/Acre</u>
Acquired Fee through FY 2010	31	24,869	\$17,486,027	\$703
Acquired Easement through FY 2010	0	0	\$0	\$0
Acquired Exchange through FY 2010	1	50	\$0	\$0
Acquired Donation through FY 2010	10	1,371	\$0	\$0
Acquired Other means through FY 2010	1	856	\$1,080,000	\$1,262
Total Acquired through FY 2010	43	27,146	\$18,566,027	\$684
Planned FY 2011	2	1,000	\$2,500,000	\$2,500
Proposed FY 2012	1	772	\$1,500,000	\$1,943
Remaining	52	31,007	\$35,600,250	\$1,148
Totals	98	59,925	\$58,166,277	\$971

Purpose of Acquisition: To protect high quality habitat for the endangered Delmarva fox squirrel and other endangered species, along with nesting and wintering habitat for the American bald eagle, migratory waterfowl, colonial waterbirds, shorebirds, and forest interior dwelling bird species.

Project Cooperators: The Conservation Fund

Project Description: Funds would acquire fee title to 772 acres along the northern border of the Refuge boundary. This parcel has been a high priority for the Refuge for over a decade. The tract consists of forested wetlands interspersed with tidal waters, ponds, and marsh. These areas provide excellent habitat for migratory birds such as osprey, black and wood ducks, Canada geese, marsh and water birds, the bald eagle, as well as foraging opportunities for the peregrine falcon.

The area is important to Federal and state endangered and threatened species and many migratory bird species. Acquisition would expand potential opportunities for wildlife-dependent forms of public recreation.

O&M: The Service anticipates no additional operations or maintenance costs associated with this acquisition as the parcel is located within refuge boundaries and would add no additional workload.

NORTHERN TALLGRASS PRAIRIE NATIONAL WILDLIFE REFUGE

Minnesota, Iowa

Acquisition Authority: Fish and Wildlife Act of 1956

FY 2012 Budget Priority: No. 17 of 63

Location: Eighty-five counties in western Minnesota and northwestern Iowa

Congressional District: Minnesota, Districts 1, 2, and 7 **FWS Region 3**
Iowa, Districts 3, 4, and 5

Total LWCF Appropriations: \$7,306,657

FY 2012 Budget Request: \$1,500,000

Acquisition Status:

	<u>Ownerships</u>	<u>Acres</u>	<u>Cost</u>	<u>\$/Acre</u>
Acquired Fee through FY 2010	12	2,839	\$4,356,118	\$1,534
Acquired Easement through FY 2010	43	2,628	\$1,768,278	\$673
Acquired Exchange through FY 2010	0	0	\$0	\$0
Acquired Donation through FY 2010	0	0	\$0	\$0
Acquired Other means through FY 2010	0	0	\$0	\$0
Total Acquired Through FY 2010	55	5,467	\$6,124,396	\$1,120
Planned FY 2011	1	750	\$1,500,000	\$2,000
Proposed FY 2012	1	750	\$1,500,000	\$2,000
Remaining	793	70,033	\$15,875,604	\$227
Totals	850	77,000	\$25,000,000	\$325

Purpose of Acquisition: To protect, restore, and enhance the remaining northern tallgrass prairie habitats and associated wildlife species, including the federally endangered Prairie-Fringed Orchid and Prairie Bush Clover, and each states' threatened and endangered species.

Project Cooperators: Minnesota Department of Natural Resources, Iowa Department of Natural Resources, Ducks Unlimited, Pheasants Forever, The Nature Conservancy, Minnesota Waterfowl Association, several county conservation boards, and several local Chambers of Commerce.

Project Description: Funds would acquire fee title to 750 acres throughout northwestern Iowa. The proposed project includes prairie preservation and restoration, to protect the prairie ecosystem and benefit grassland birds such as dickcissel, bobolink, grasshopper sparrow, and sedge wren.

Rather than acquiring a contiguous boundary with the aim of eventual ownership of all lands, the goal of the Northern Tallgrass Prairie NWR is to acquire 77,000 acres of land spread across 85 counties. The Refuge will acquire fee and easement lands to reach this goal, work with private landowners to develop stewardship agreements, and provide incentives and management assistance in the interest of preserving the prairie landscape regardless of ownership for the public and future generations.

O&M: The Service would use \$22,000 for initial restoration and enhancement work (spraying, mowing, burning, and signage) which the Service would fund from Refuge System base funding.

**CAPE ROMAIN NATIONAL WILDLIFE REFUGE
South Carolina**

Acquisition Authority: Fish and Wildlife Act of 1956, Refuge Recreation Act of 1962

FY 2012 Budget Priority: No. 18 of 63

Location: Coast of South Carolina, about 20 miles north of Charleston

Congressional Districts: South Carolina, District 1 **FWS Region 4**

Total LWCF Appropriations: \$799,688

FY 2012 Budget Request: \$750,000

Acquisition Status:

	<u>Ownerships</u>	<u>Acres</u>	<u>Cost</u>	<u>\$/Acre</u>
Acquired Fee through FY 2010	6	28,520	\$847,916	\$30
Acquired Easement through FY 2010	1	180	\$0	\$0
Acquired Exchange through FY 2010	2	31,036	\$0	\$0
Acquired Donation through FY 2010	2	6,551	\$0	\$0
Acquired Other means through FY 2010	0	0	\$0	\$0
Total Acquired through FY 2010	11	66,287	\$847,916	\$13
Planned FY 2011	3	73	\$500,000	\$6,849
Proposed FY 2012	1	110	\$750,000	\$6,818
Remaining	5	1,962	\$13,341,600	\$6,800
Totals*	20	68,432	\$15,439,516	\$226

*Approved Acquisition Boundary - GIS Acreage Figure

Purpose of Acquisition: To protect fisheries and wildlife resources and provide public access to refuge lands.

Project Cooperators: South Carolina Coastal Conservation League, the SEEWEE to Santee Community Development Corporation, Ducks Unlimited, and The Nature Conservancy.

Project Description: Funding would acquire fee title to approximately 110 acres of a 292-acre parcel. Acquisition of this tract would directly support the recovery of wood storks and other endangered species and support over 200 species of migratory birds. Acquisition would also provide recreational opportunities for hunting, fishing, and bird watching. If not acquired by the Service, the tract may be sold to a developer. The Refuge has invested more than 30 years in efforts to recover the threatened Loggerhead Sea Turtle and supports more than 1,000 nests each year, the largest loggerhead sea turtle rookery north of Florida in the United States. The Refuge includes critical habitat for endangered least tern and wood stork and habitat for threatened piping plover, American alligator, and seabeach amaranth.

O&M: The Service anticipates no additional operation and maintenance costs associated with this acquisition as the parcel is located within refuge boundaries and would add no additional workload.

DAKOTA TALLGRASS PRAIRIE WILDLIFE MANAGEMENT AREA
North Dakota, South Dakota

Acquisition Authority: Fish and Wildlife Act of 1956

FY 2012 Budget Priority: No. 19 of 63

Location: The Missouri Coteau, north and east of the Missouri River

Congressional Districts: North Dakota, At Large **FWS Region 6**
 South Dakota, At Large

Total LWCF Appropriations: \$8,673,750 (Includes Title V funds)

FY 2012 Budget Request: \$1,500,000

Acquisition Status:

	<u>Ownerships</u>	<u>Acres</u>	<u>Cost</u>	<u>\$/Acre</u>
Acquired Fee through FY 2010	0	0	\$0	\$0
Acquired Easement through FY 2010	187	59,098	\$8,673,750	\$147
Acquired Exchange through FY 2010	0	0	\$0	\$0
Acquired Donation through FY 2010	0	0	\$0	\$0
Acquired Other means through FY 2010	0	0	\$0	\$0
Total Acquired through FY 2010	187	59,098	\$8,673,750	\$147
Planned FY 2011	Multi	6,667	\$3,000,000	\$450
Proposed FY 2012	19	3,333	\$1,500,000	\$450
Remaining	Multi	120,902	\$53,305,090	\$441
Totals	Multi	190,000	\$66,478,840	\$350

Purpose of Acquisition: To protect the northern tallgrass prairie ecosystem and associated wildlife species.

Project Cooperators: The Nature Conservancy and the local community.

Project Description: Funds would acquire perpetual grassland easements on approximately 19 ownerships covering 3,333 acres. The tallgrass prairie once covered 90 percent of the Dakotas, but less than three percent of the native prairie remains. The project would enable the Service to use grassland easements to protect approximately 15 percent of the remaining tallgrass prairie in the eastern Dakotas, including 25,000 acres in North Dakota and 165,000 acres in South Dakota. Habitat fragmentation and conversion to crop production are the primary threats to the project area.

The project area has a rich variety of plant, animal, and insect species, including over 147 species of breeding birds ranging from neotropical migrants to waterfowl. Several candidate endangered species are found within the tallgrass prairie ecosystem including Baird’s sparrow, loggerhead shrike, ferruginous hawk, and rare butterflies such as the Dakota skipper and the endangered western prairie fringed orchid. These large blocks of grasslands help to buffer prairie systems from agricultural chemicals and invasive species and provide a natural habitat mosaic, which is required by prairie dependent species. Existing prairie is a well-documented store of terrestrial carbon. Preventing conversion with grassland easements ensures this sequestered carbon will be maintained.

O&M: The Service anticipates spending a minimal amount for annual compliance over-flights, estimated at less than \$1,500 per year, which the Service would fund from Refuge System base funding.

**BIG MUDDY NATIONAL FISH AND WILDLIFE REFUGE
Missouri**

Acquisition Authority: Fish and Wildlife Act of 1956

FY 2012 Budget Priority: No. 20 of 63

Location: Various sites along the lower Missouri River between Kansas City and St. Louis

Congressional Districts: Missouri, Districts 1, 2, 3, 4, 5, 6, 9 **FWS Region 3**

Total LWCF Appropriations: \$4,797,800

FY 2012 Budget Request: \$387,000

Acquisition Status:

	<u>Ownerships</u>	<u>Acres</u>	<u>Cost</u>	<u>\$/Acre</u>
Acquired Fee through FY 2010	53	11,409	\$7,718,303	\$677
Acquired Easement through FY 2010	2	2	\$1,000	\$500
Acquired Exchange through FY 2010	0	0	\$0	\$0
Acquired Donation through FY 2010	1	32	\$0	\$0
Acquired Other means through FY 2010	0	0	\$0	\$0
Total Acquired through FY 2010	56	11,443	\$7,719,303	\$675
Planned FY 2011	2	343	\$686,000	\$2,000
Proposed FY 2012	3	193	\$387,000	\$2,005
Remaining	140	48,021	\$193,769,200	\$4,035
Totals	201	60,000	\$202,561,503	\$3,376

Purpose of Acquisition: To restore natural flood plain form and function to the extent possible for the benefit of dependent fish and wildlife species, including listed and candidate endangered species, declining native fish and other native aquatic species, migratory birds, and other native wildlife for the benefit of the American public and future generations.

Project Cooperators: Partnerships through Ducks Unlimited, The Wild Turkey Federation, the Missouri Department of Natural Resources, the Missouri Department of Conservation, and the Army Corps of Engineers.

Project Description: Funding would acquire fee title to three tracts comprising 193 acres. These tracts are bottomland hardwood or cropland that the Service would manage for native aquatic species and migratory birds. The additions would preserve and restore natural river flood plain, and manage fish and wildlife habitats for present and future generations. The project also supports and complements the Missouri Department of Conservation’s 10-year fisheries strategic plan for the Missouri River.

O&M: The Service would use \$12,000 initially for boundary posting, initial restoration, and enhancement work, which the Service would fund from Refuge System base funding.

FLINT HILLS LEGACY CONSERVATION AREA

Kansas

Acquisition Authority: Fish and Wildlife Act of 1956

FY 2012 Budget Priority: No. 21 of 63

Location: The Flint Hills ecoregion located within 14 counties in a long narrow band running north-south in eastern Kansas

Congressional Districts: Kansas, Districts 1, 2, and 4 **FWS Region 6**

Total LWCF Appropriations: \$0

FY 2012 Budget Request: \$5,000,000

Acquisition Status:

	<u>Ownerships</u>	<u>Acres</u>	<u>Cost</u>	<u>\$/Acre</u>
Acquired Fee through FY 2010	0	0	\$0	\$0
Acquired Easement through FY 2010	0	0	\$0	\$0
Acquired Exchange through FY 2010	0	0	\$0	\$0
Acquired Donation through FY 2010	0	0	\$0	\$0
Acquired Other means through FY 2010	0	0	\$0	\$0
Total Acquired through FY 2010	0	0	\$0	\$0
Planned FY 2011	0	0	\$0	\$0
Proposed FY 2012	4	16,667	\$5,000,000	\$300
Remaining	310	1,083,333	\$325,000,000	\$300
Totals	314	1,100,000	\$330,000,000	\$300

Purpose of Acquisition: To protect the Flint Hills tallgrass prairie ecosystem and associated grassland dependent wildlife species.

Project Cooperators: The Nature Conservancy, Kansas Land Trust, The Ranchland Trust of Kansas, Tallgrass Legacy Alliance, and the local community.

Project Description: Funds would acquire 16,667 acres of permanent conservation easements on four ownerships. Tallgrass prairie is one of the most endangered ecosystems in the United States, with less than four percent of the original acreage remaining. The project will protect 1,100,000 acres of the remaining tallgrass prairie in the Flint Hills ecoregion in eastern Kansas through the acquisition of perpetual conservation easements from willing sellers. The acquisitions will help prevent fragmentation, which results from residential, commercial, and industrial development, as well as encroachment of woody vegetation. Landowner interest is high and the Service is identifying lands for the initial round of acquisitions that feature a high percentage of biologically-rich habitat and a limited amount of fragmentation and woody vegetation encroachment.

O&M: The Service estimates annual costs at \$1,000 for maintenance of new acquisitions, mostly for annual compliant over-flights, which the Service would fund from Refuge System base funding.

CHICKASAW NATIONAL WILDLIFE REFUGE

Tennessee

Acquisition Authority: Emergency Wetlands Resources Act of 1986

FY 2012 LAPS Rank: No. 22 of 63

Location: Approximately 10 miles west of Ripley, and 60 miles north of Memphis

Congressional Districts: Tennessee, District 8 **FWS Region 4**

Total LWCF Appropriations: \$4,961,636

FY 2012 Budget Request: \$1,000,000

Acquisition Status:

	<u>Ownerships</u>	<u>Acres</u>	<u>Cost</u>	<u>\$/Acre</u>
Acquired Fee through FY 2010	21	20,375	\$23,252,783	\$1,141
Acquired Easement through FY 2010	0	0	\$0	\$0
Acquired Exchange through FY 2010	0	0	\$0	\$0
Acquired Donation through FY 2010	4	5,584	\$0	\$0
Acquired Other means through FY 2010	0	0	\$0	\$0
Total Acquired through FY 2010	25	25,959	\$23,252,783	\$896
Planned FY 2011	3	200	\$500,000	\$2,500
Proposed FY 2012	2	285	\$1,000,000	\$3,509
Remaining	100	32,351	\$97,053,000	\$3,000
Totals	130	58,795	\$121,805,783	\$2,072

Purpose of Acquisition: To protect, enhance, and manage a valuable bottomland hardwood wetland ecosystem for the benefit of migratory and resident waterfowl, wading birds, and other wildlife.

Project Cooperator: Tennessee Wildlife Resources Agency

Project Description: Funding would acquire fee title to two tracts comprising 285 acres. The Refuge has been identified as a key migratory bird conservation area in Tennessee, with long-range potential for providing significant habitat conservation benefits for high-priority migratory, wintering waterfowl. It supports shorebirds, neotropical migrants, and endangered species such as least terns, all of which would directly benefit from the acquisition of these tracts. Both tracts are primarily agricultural lands which the Service would restore to bottomland hardwood forest habitat including carbon sequestration. There has been a 20-million acre loss of this habitat component associated with the Mississippi Alluvial Valley. The acquisition of these two tracts would enable the Refuge to support the collaborative efforts of the migratory bird mission with the West Tennessee Conservation Plan.

O&M: The Service estimates an initial cost of \$15,000 for posting of boundaries which the Service would fund from Refuge System base funding.

CYPRESS CREEK NATIONAL WILDLIFE REFUGE

Illinois

Acquisition Authority: Emergency Wetlands Resources Act of 1986

FY 2012 Budget Priority: No. 23 of 63

Location: Near the southern boundary of Illinois at the confluence of the Ohio and Mississippi Rivers

Congressional Districts: Illinois, Districts 12 and 19 **FWS Region 3**

Total LWCF Appropriations: \$15,403,300

FY 2012 Budget Request: \$700,000

Acquisition Status:

	<u>Ownerships</u>	<u>Acres</u>	<u>Cost</u>	<u>\$/Acre</u>
Acquired Fee through FY 2010	151	16,310	\$12,473,942	\$765
Acquired Easement through FY 2010	0	0	\$0	\$0
Acquired Donation through FY 2010	5	394	\$0	\$0
Acquired Exchange through FY 2010	4	424	\$15,500	\$37
Acquired Other means through FY 2010	0	0	\$0	\$0
Total Acquired through FY 2010	160	17,128	\$12,489,442	\$729
Planned FY 2011	2	232	\$424,000	\$1,828
Proposed FY 2012	4	375	\$700,000	\$1,867
Remaining	79	17,256	\$54,904,500	\$3,182
Totals	245	34,991	\$68,517,942	\$1,958

Purpose of Acquisition: To preserve, restore, and manage wetlands and bottomland forest habitat in support of the North American Waterfowl Management Plan, and endangered and threatened species such as the Indiana Bat and Northern Copperbelly Water Snake.

Project Cooperators: The Cache River Wetlands is a joint venture project that includes five partners – The Nature Conservancy, Ducks Unlimited, the Illinois Department of Natural Resources, the Natural Resources Conservation Service (DNR), and the Service – together planning to acquire 60,000 acres. Illinois DNR recently constructed a four million dollar Cache River Wetlands Center, which is a high-quality attraction that educates individuals about this internationally significant resource. Conservation, education and stewardship efforts on the Refuge and throughout the watershed have been supported with time and funding by local, state, and national organizations; Friends of the Cache River Watershed, Shawnee Audubon Society, Southern Illinois Audubon Society, Shawnee Group of the Sierra Club, Illinois Audubon Society, Illinois Clean Energy Community Foundation, American Land Conservancy, Ducks Unlimited, Inc., and The Nature Conservancy.

Project Description: Funds would acquire fee title to approximately 375 acres in four ownerships. The Cache River-Cypress Creek Wetlands are recognized under the Ramsar Convention as wetlands of international importance. Acquisition of these parcels is important to the preservation of these wetlands, to the birds that utilize them, and to the American public that treasures them.

O&M: The Service would use \$12,000 initially for boundary posting, initial restoration, and enhancement work, which the Service would fund from Refuge System base funding.

ANAHUAC NATIONAL WILDLIFE REFUGE
Texas

Acquisition Authority: Fish and Wildlife Act of 1956

FY 2012 Budget Priority: No. 24 of 63

Location: Approximately 90 miles east of Houston, Texas

Congressional Districts: Texas, District 14 **FWS Region 2**

Total LWCF Appropriations: \$1,917,685

FY 2012 Budget Request: \$1,000,000

Acquisition Status:

	<u>Ownerships</u>	<u>Acres</u>	<u>Cost</u>	<u>\$/Acre</u>
Acquired Fee through FY 2010	3	3,956	\$1,431,810	\$361
Acquired Easement through FY 2010*	*2	63	\$0	\$0
Acquired Exchange through FY 2010	0	0	\$0	\$0
Acquired Donation through FY 2010	3	390	\$0	\$0
Acquired Other means through FY 2010	12	30,045	\$12,537,064	\$417
Total Acquired through FY 2010	20	34,454	\$13,968,874	\$405
Planned FY 2011	0	0	\$0	\$0
Proposed FY 2012	1	3,333	\$1,000,000	\$300
Remaining	95	44,354	\$13,312,800	\$300
Totals	116	**82,141	\$28,281,674	\$344

* Both are road easements.

** Includes three tracts acquired by Categorical Exclusion at a total of 52 acres.

Purpose of Acquisition: In a recent 25-year period, over 100,000 acres of coastal wetlands were lost in the upper Texas Gulf Coast region. Direct loss of native habitat to development and conversion to other land uses has been extensive. These changes impact the native prairie and coastal marshes, resulting in a continuing trend of habitat loss and degradation. The large-scale alterations to the project area and ongoing threats from sea level rise and land subsidence require a proactive approach to ensure the long-term protection of natural resources in the region.

Project Cooperators: The Conservation Fund, The Trust for Public Land, and The Nature Conservancy.

Project Description: Funding would provide for the fee title acquisition of approximately 3,333 acres of high-priority habitat from a single tract within the approved Refuge boundary. Acquisition of this tract would provide continued protection of coastal waterfowl resources and wetland-dependent migratory birds. The wetlands portion of this tract contains high-value wintering waterfowl habitats. This tract also contains native coastal prairie with high habitat value for resident mottled ducks, many species of grassland-dependent migratory birds, and a wide variety of native wildlife species.

O&M: The Service estimates an initial cost of \$60,000 for fencing and posting of refuge boundaries which the Service would fund from Refuge System base funding. The acquisition tract is marshland, which is more costly to survey and mark.

HAKALAU FOREST NATIONAL WILDLIFE REFUGE

Hawaii

Acquisition Authority: Endangered Species Act of 1973

FY 2012 Budget Priority: No. 25 of 63

Location: 10 miles north of Hilo on the windward side of the Island of Hawaii and near Honaunau on the leeward side of the Island

Congressional Districts: Hawaii, District 2 **FWS Region 1**

Total LWCF Appropriations: \$28,181,000

FY 2012 Budget Request: \$3,713,000

Acquisition Status:

	<u>Ownerships</u>	<u>Acres</u>	<u>Cost</u>	<u>\$/Acre</u>
Acquired Fee through FY 2010	4	38,005	\$26,178,265	\$689
Acquired Easement through FY 2010	3	42	\$60,900	\$1,450
Acquired Exchange through FY 2010	0	0	\$0	\$0
Acquired Donation through FY 2010	0	0	\$0	\$0
Acquired Other means through FY 2010	0	0	\$0	\$0
Total Acquired through FY 2010	7	38,047	\$26,239,165	\$690
Planned FY 2011	0	0	\$0	\$0
Proposed FY 2012	1	4,900	\$3,713,000	\$758
Remaining	4	12,331	\$9,123,980	\$740
Totals	12	55,278	\$39,076,145	\$707

Purpose of Acquisition: Funding of this fee title acquisition would provide protection and enhance populations of numerous threatened and endangered plant and forest bird species and the biological integrity, diversity, and environmental health of wet and mesic forest ecosystems.

Project Cooperators: The Nature Conservancy

Project Description: Funding would enable fee title acquisition of 4,900 acres of a 15,730-acre site in the Hakalau Forest and Kona Forest Units of Hakalau Forest NWR. There are two parcels comprising approximately 13,130 acres near the Hakalau Forest Unit. These sites have significance for recovery of listed plants and endangered forest birds and their habitats. They provide important watershed values including groundwater recharge and prevention of siltation of nearby marine environments. An additional 2,600 acres of prime koa and ohia forest habitat of the McCandless Ranch is available near the Kona Forest Unit. This area supports small but biologically important populations of rare native birds including ‘akiapoia’ au, ‘akepa, ‘io, and Hawai’i creeper, as well as abundant populations of native ‘elepaio, ‘i’iwi, ‘amkihi, and ‘apapane.

O&M: Once acquisition of all 15,730 acres is complete, the Service estimates annual costs of \$600,000 for six additional FTEs and a one-time cost of \$5,300,000 for fencing and ungulate removal.

BALCONES CANYONLANDS NATIONAL WILDLIFE REFUGE

Texas

Acquisition Authority: Fish and Wildlife Act of 1956, Endangered Species Act of 1973

FY 2012 Budget Priority: No. 26 of 63

Location: Approximately one hour outside of the capital city, Austin, TX

Congressional Districts: Texas, District 21 **FWS Region 2**

Total LWCF Appropriations: \$31,781,620

FY 2012 Budget Request: \$2,250,000

Acquisition Status:

	<u>Ownerships</u>	<u>Acres</u>	<u>Cost</u>	<u>\$/Acre</u>
Acquired Fee through FY 2010	44	*19,834	**\$28,001,474	\$1,412
Acquired Easement through FY 2010	2	1,452	\$2,535,000	\$1,746
Acquired Exchange through FY 2010	0	0	\$0	\$0
Acquired Donation through FY 2010	0	0	\$0	\$0
Acquired Other means through FY 2010	0	0	\$0	\$0
Total Acquired through FY 2010	46	21,286	\$30,536,474	\$1,435
Planned FY 2011	1	666	\$2,000,000	\$3,003
Proposed FY 2012	2	523	\$2,250,000	\$4,302
Remaining	251	57,525	\$200,739,000	\$3,490
Totals	300	80,000	\$235,525,474	\$2,944

* 19,834 acres represents acres already acquired plus 340 acres to be acquired with FY 2010 funding.

** \$28,001,474 includes \$995,612 in the 2010 budget to be obligated for the 340 acres shown above.

Purpose of Acquisition: To protect and preserve essential breeding habitat for the Golden-cheeked Warbler and Black-capped Vireo, to protect habitats for other wildlife species, as well as unique flora, fauna and karst systems. This multiple year acquisition tract is highly sought after for residential development.

Project Cooperators: Friends of Balcones Canyonlands NWR, The Nature Conservancy, The Trust for Public Land, National Fish and Wildlife Foundation, Lago Vista Chamber of Commerce, Texas Audubon, and others.

Project Description: Funds would acquire fee title to 523 acres in two ownerships. The Refuge provides essential habitat for two listed endangered neotropical migratory birds and endangered cave dwelling invertebrates. It also provides important riparian habitat that is one of the nation's most unique and biologically diverse areas. The project area is one of the fastest growing areas in the country and these remnant habitats are highly threatened by development. The remaining habitats must be protected or the listed species will be lost.

O&M: The Service estimates annual costs of \$1,500 for fencing and posting of boundaries which the Service would fund from Refuge System base funding.

NESTUCCA BAY NATIONAL WILDLIFE REFUGE

Oregon

Acquisition Authority: Fish and Wildlife Act of 1956

FY 2012 Budget Priority: No. 27 of 63

Location: North Pacific coast of Oregon

Congressional Districts: Oregon, District 5 **FWS Region 1**

Total LWCF Appropriations: \$994,760

FY 2012 Budget Request: \$2,000,000

Acquisition Status:

	<u>Ownerships</u>	<u>Acres</u>	<u>Cost**</u>	<u>\$/Acre</u>
Acquired Fee through FY 2010	11	545	\$2,590,402	\$4,753
Acquired Easement through FY 2010	0	0	\$0	\$0
Acquired Exchange through FY 2010	0	0	\$0	\$0
Acquired Donation through FY 2010	3	269	\$0	\$0
Acquired Other means through FY 2010	1	76	\$800,000	\$10,526
Total Acquired through FY 2010	15	890	\$3,390,402	\$3,809
Planned FY 2011	3	256	\$2,000,000	\$7,813
Proposed FY 2012	2	271	\$2,000,000	\$7,380
Remaining	43	2,019	\$4,654,104	\$2,305
Totals	63	3,436	\$12,044,506	\$3,505

** Includes incidental acquisition costs and \$800,000 FLTFA funds in FY 2009.

Purpose of Acquisition: To protect and manage fisheries and wildlife resources including neo-tropical migratory birds, waterfowl, and shorebirds.

Project Cooperators: The Nature Conservancy, The Wetlands Conservancy, Oregon Habitat Joint Venture, Nestucca/Neskowin Watershed Council, and Ducks Unlimited.

Project Description: Funding would complete the purchase of the last remaining private farm that supports the Semidi goose flock. The Refuge was established in 1991 for the acquisition of short grass pastures to provide wintering habitat for dusky Canada and Aleutian Canada cackling geese, and to provide habitat for a variety of shorebirds, waterfowl, neo-tropical migratory birds, estuarine-dependent fish, and other wildlife. The Nestucca Bay area supports approximately 10 percent of the world population of dusky Canada geese and 100 percent of a unique subpopulation of Aleutian cackling geese, known as the Semidi Islands Aleutian cackling geese. Successful acquisition of this parcel would allow the Service to protect and manage the entire wintering area of the Semidi Islands Aleutian cackling geese.

O&M: The Service estimates an initial cost of \$5,000 for boundary posting, gravel road maintenance, and general refuge maintenance, which the Service would fund from Refuge System base funding.

LOWER HATCHIE NATIONAL WILDLIFE REFUGE

Tennessee

Acquisition Authority: Fish and Wildlife Act of 1956; Refuge Recreation Act

FY 2012 Budget Priority: No. 28 of 63

Location: Approximately 50 miles north of Memphis, TN

Congressional Districts: Tennessee, District 8 **FWS Region 4**

Total LWCF Appropriations: \$5,194,614

FY 2012 Budget Request: \$1,000,000

Acquisition Status:

	<u>Ownerships</u>	<u>Acres</u>	<u>Cost</u>	<u>\$/Acre</u>
Acquired Fee through FY 2010	24	10,094	\$13,911,216	\$1,378
Acquired Easement through FY 2010	0	0	\$0	\$0
Acquired Exchange through FY 2010	1	294	\$0	\$0
Acquired Donation through FY 2010	1	8	\$0	\$0
Acquired Other means through FY 2010	2	1,873	\$0	\$0
Total Acquired through FY 2010	28	12,269	\$13,911,216	\$1,134
Planned FY 2011	0	0	\$0	\$0
Proposed FY 2012	1	333	\$1,000,000	\$3,003
Remaining	149	12,805	\$61,309,784	\$4,788
Totals	178	25,407	\$76,221,000	\$3,000

Purpose of Acquisition: To preserve and protect habitat for wintering waterfowl and other migratory birds.

Project Cooperator: The Conservation Fund

Project Description: Funds would acquire fee title to approximately 333 acres of a 627-acre tract. This would be a phased acquisition as funding becomes available. This tract is primarily agricultural with some timber and falls within the 100-year plan as its southern border is the Hatchie River. The Service would restore the agricultural lands to bottomland hardwood forest habitat through a carbon sequestration partner. The Refuge is part of the West Tennessee Migratory Bird Conservation Area which comprises 147,700 acres in the central Mississippi Alluvial Valley of Western Tennessee. As a key migratory bird conservation area in Tennessee, the Refuge provides significant habitat conservation benefits for high priority migratory bird species and endangered species such as waterfowl, shorebirds, neotropical migrants, and interior least tern.

O&M: The Service would use \$15,000 initially for posting the boundaries which the Service would fund from Refuge System base funding.

SAN BERNARD NATIONAL WILDLIFE REFUGE

Texas

Acquisition Authority: Fish and Wildlife Act of 1956, The Refuge Recreation Act of 1962, and Emergency Wetland Resource Act of 1956

FY 2012 Budget Priority: No. 29 of 63

Location: Approximately 65 miles southwest of Houston, TX

Congressional Districts: Texas, District 14 **FWS Region 2**

Total LWCF Appropriations: \$1,250,000

FY 2012 Budget Request: \$1,400,000

Acquisition Status:

	<u>Ownerships</u>	<u>Acres</u>	<u>Cost</u>	<u>\$/Acre</u>
Acquired Fee through FY 2010	4	4,110	\$2,517,895	\$613
Acquired Easement through FY 2010	4	488	*\$0	\$0
Acquired Exchange through FY 2010	0	0	\$0	\$0
Acquired Donation through FY 2010	12	2,535	\$0	\$0
Acquired Other means through FY 2010	46	39,975	**\$24,499,404	\$613
Total Acquired through FY 2010	66	47,108	\$27,017,299	\$574
Planned FY 2011	2	3,945	\$4,000,000	\$1,014
			1,400,000	
Proposed FY 2012	3	906		\$1,546
Remaining	11	9,641	\$11,073,600	\$1,148
Totals	82	61,600	\$43,540,899	\$707

* All four easements were acquired through donation.

** Includes tracts purchased with MBCF, NAWCF, and other funding.

Purpose of Acquisition: Protect endangered species, biological diversity value, and provide refuge for migratory waterfowl.

Project Cooperators: The Trust for Public Land, The National Fish and Wildlife Foundation, The Nature Conservancy, and various foundations and corporations.

Project Description: Funding the fee title acquisition of 906 acres would protect important remnant bottomland habitat and associated habitats for migrating, wintering, and breeding waterfowl. Acquisition of these tracts would also preserve much needed resting habitat for neotropical birds migrating north in the spring after crossing the Gulf of Mexico. Recreational opportunities of photography and bird watching would be available to visitors.

O&M: The Service would use \$8,900 initially for posting and miscellaneous fencing on the acquired tracts which the Service would fund from Refuge System base funds.

EDWIN B. FORSYTHE NATIONAL WILDLIFE REFUGE

New Jersey

Acquisition Authority: Fish and Wildlife Act of 1956, Emergency Wetlands Resources Act of 1986

FY 2012 Budget Priority: No. 30 of 63

Location: Ten miles north of Atlantic City, New Jersey

Congressional Districts: New Jersey, Districts 2, 3, and 4 **FWS Region 5**

Total LWCF Appropriations: \$31,217,122

FY 2012 Budget Request: \$500,000

Acquisition Status:

	<u>Ownerships</u>	<u>Acres</u>	<u>Cost</u>	<u>\$/Acre</u>
Acquired Fee through FY 2010	349	42,762	\$48,595,155	\$1,136
Acquired Easement through FY 2010	3	2,541	\$0	\$0
Acquired Exchange through FY 2010	2	10	\$0	\$0
Acquired Donation through FY 2010	20	1,436	\$0	\$0
Acquired Other means through FY 2010	6	37	\$535,000	\$14,459
Total Acquired through FY 2010	380	46,786	\$49,130,155	\$1,050
Planned FY 2011	0	0	\$0	\$0
Proposed FY 2012	2	42	\$500,000	\$11,905
Remaining	964	12,809	\$20,148,975	\$1,573
Totals	1,346	59,679	\$70,279,130	\$1,178

Purpose of Acquisition: To protect long-term viability of habitat important to Atlantic brant and other waterfowl and waterbirds including American black rails, and threatened or endangered species. Most of the Refuge is estuarine marsh habitat that grades into brackish and fresh water wetlands, including some stands of Atlantic white cedar. The Refuge includes barrier island habitat and upland forests and fields. Land acquisition will provide habitat for migratory birds and increased stability of coastal marsh areas.

Project Cooperators: New Jersey Department of Environmental Protection Green Acres Program, Ocean County, The Trust for Public Land, and New Jersey Audubon.

Project Description: To acquire 42 acres of two Great Creek Road parcels, located in the headwaters of the Doughty Creek watershed within the Refuge boundary. Conserving these parcels is critical to managing the Brigantine Division’s 900 acres of freshwater impoundments and vital to the ecological functioning of the downstream freshwater wetlands in the watershed. Protecting these parcels will provide valuable habitat in freshwater impoundments for migrating shorebirds, wading birds, and wintering and migrating waterfowl. Acquisition would help maintain the steady flow of groundwater into the back bays that contributes to the biological productivity of estuarine systems. It would conserve federal trust fish species dependent on back-bay marshes and waters, such as American eel and striped bass. The Refuge is one of the 24 Ramsar-Convention-designated wetlands of international importance in the United States.

O&M: The Service anticipates no additional operations or maintenance costs associated with this acquisition as the parcel is located within refuge boundaries and would add no additional workload.

GRASSLANDS WILDLIFE MANAGEMENT AREA

California

Acquisition Authority: Emergency Wetlands Resource Act of 1986, Migratory Bird Conservation Act of 1929

FY 2012 Budget Priority: No. 31 of 63

Location: Located in the Pacific Flyway between the Cities of Los Banos and Gustine, California

Congressional District: California, District 18 **FWS Region 8**

Total LWCF Appropriations: \$9,907,332

FY 2012 Budget Request: \$3,040,000

Acquisition Status:

	<u>Ownerships</u>	<u>Acres</u>	<u>Cost</u>	<u>\$/Acre</u>
Acquired Fee through FY 2010	8	14,970	\$18,066,228	\$1,207
Acquired Easement through FY 2010	164	76,868	\$40,992,677	\$533
Acquired Exchange through FY 2010	0	0	\$0	\$0
Acquired Donation through FY 2010	0	0	\$0	\$0
Acquired Other means through FY 2010	0	0	\$0	\$0
Total Acquired through FY 2010	172	91,838	\$59,058,905	\$643
Planned FY 2011	5	1,648	\$4,000,000	\$2,427
Proposed FY 2012	6	1,415	\$3,040,000	\$2,148
Remaining	238	38,399	\$179,770,282	\$4,682
Totals	421	133,300	\$245,869,187	\$1,844

Purpose of Acquisition: To protect an important wintering area for the Pacific Flyway waterfowl populations.

Project Cooperators: State of California

Project Description: Funds would acquire eight perpetual conservation easements on approximately 1,415 total acres. These properties are predominantly low-lying irrigated pasture. The biggest threat is residential development and the conversion from grasslands, wetlands, and riparian habitat to croplands, orchards, or dairy operations that provide little or no benefit to wildlife. The acquisition of these perpetual conservation easements would provide long-term viability to the grassland ecosystem and provide a safe haven for migratory birds and other wildlife

O&M: The interests to be acquired are perpetual conservation easements. For this reason, there will be little long-term management costs associated with this acquisition. The Service would fund any expenses from Refuge System base funding.

HUMBOLDT BAY NATIONAL WILDLIFE REFUGE
California

Acquisition Authority: Emergency Wetlands Resource Act of 1986, Migratory Bird Conservation Act of 1929

FY 2012 Budget Priority: No. 32 of 63

Location: Northwest quadrant of Humboldt County in South Bay between the Cities of Arcata and Eureka, California and the Lanphere Dunes Unit west of Arcata

Congressional District: California, District 11 **FWS Region 8**

Total LWCF Appropriations: \$761,004

FY 2012 Budget Request: \$2,500,000

Acquisition Status:

	<u>Ownerships</u>	<u>Acres</u>	<u>Cost</u>	<u>\$/Acre</u>
Acquired Fee through FY 2010	29	3,384	\$6,246,414	\$1,846
Acquired Easement through FY 2010	0	0	\$0	\$0
Acquired Exchange through FY 2010	1	1	\$1,300	\$1,300
Acquired Donation through FY 2010	4	656	\$0	\$0
Acquired Other means through FY 2010	0	0	\$0	\$0
Total Acquired through FY 2010	34	4,041	\$6,247,714	\$1,546
Planned FY 2011	0	0	\$0	\$0
Proposed FY 2012	3	335	\$2,500,000	\$7,463
Remaining	13	5,347	\$14,699,496	\$2,749
Totals	49	9,723	\$23,447,210	\$2,412

Purpose of Acquisition: To protect important wintering area for the Pacific Flyway waterfowl populations and endangered American peregrine falcon, California brown pelican, and clapper rail.

Project Cooperators: State of California

Project Description: Funds would acquire fee title to three tracts comprising approximately 335 acres. These properties are predominantly sand dune, salt marsh, irrigated pasture and scrub forest. The biggest threat is residential development or dairy operations that provide little or no benefit to wildlife. The acquisition of these properties would provide long-term viability to the Western Hemisphere Shorebird Reserve Network and provide a safe haven for migratory birds and other wildlife species.

O&M: The Service estimates annual costs of \$5,000 for general maintenance, \$1,000 for law enforcement, and \$45,000 for invasive species control; a total of \$51,000, that the Service would fund from Refuge System base funding.

ROCKY MOUNTAIN FRONT CONSERVATION AREA

Montana

Acquisition Authority: Fish and Wildlife Act of 1956

FY 2012 Budget Priority: No. 33 of 63

Location: 65 miles northwest of Great Falls, MT

Congressional Districts: Montana, At Large **FWS Region 6**

Total LWCF Appropriations: \$6,750,000

FY 2012 Budget Request: \$8,000,000

Acquisition Status:

	<u>Ownerships*</u>	<u>Acres</u>	<u>Cost</u>	<u>\$/Acre</u>
Acquired Fee through FY 2010	0	0	\$0	\$0
Acquired Easement through FY 2010	4	17,060	\$6,728,500	\$394
Acquired Exchange through FY 2010	0	0	\$0	\$0
Acquired Donation through FY 2010	0	9,283	\$0	\$0
Acquired Other means through FY 2010	0	0	\$0	\$0
Total Acquired through FY 2010	4	26,343	\$6,728,500	\$255
Planned FY 2011	5	17,545	\$7,916,500	\$451
Proposed FY 2012	4	19,277	\$8,000,000	\$415
Remaining	45	106,835	\$37,686,400	\$353
Totals	58	170,000	\$60,331,400	\$355

*Easement and donation acquired from one owner counted under Easement

Purpose of Acquisition: To provide for long-term viability of fish and wildlife habitat on a large landscape in the Northern Continental Divide Ecosystem. These conservation easements would preserve habitat with existing ecosystem functions and maintain traditional rural economies for future generations.

Project Cooperators: The Nature Conservancy, The Conservation Fund, Montana Fish, Wildlife and Parks, Teton County Commission, Pondera County Commission, Lewis & Clark County Commission, Montana Wilderness Association, and Montana Audubon Society.

Project Description: Funds would acquire 19,277 acres in permanent conservation easement. The properties border existing protected lands (either Service or TNC easements or other Federal lands) and provide important habitat for grizzly bears and grassland-dependent species including migratory birds.

The Rocky Mountain Front is considered by experts to be one of the best intact ecosystems remaining in the lower 48 states. Nearly every wildlife species described by Lewis and Clark in 1806, with the exception of free ranging bison, still exist on the Front in relatively stable or increasing numbers. There is increasing pressure to subdivide and develop this landscape. Protecting these tracts with conservation easements would prevent fragmentation and preserve the environmental and economic health of trust species habitat along the Rocky Mountain Front.

O&M: The Service estimates annual costs of \$4,000 for maintenance of the new acquisitions, mainly for easement enforcement, which the Service would fund from Refuge System base funding.

**OTTAWA NATIONAL WILDLIFE REFUGE
Ohio**

Acquisition Authority: Emergency Wetlands Resources Act of 1986

FY 2012 Budget Priority: No. 34 of 63

Location: Northern Ohio at the border of Michigan and Lake Erie

Congressional Districts: Ohio, Districts 5 and 9 **FWS Region 3**

Total LWCF Appropriations: \$3,582,746 (entire complex)

FY 2012 Budget Request: \$500,000

Acquisition Status:

	<u>Ownerships</u>	<u>Acres</u>	<u>Cost</u>	<u>\$/Acre</u>
Acquired Fee through FY 2010	53	6,113	\$5,150,494	\$843
Acquired Easement through FY 2010	0	0	\$0	\$0
Acquired Exchange through FY 2010	0	0	\$0	\$0
Acquired Donation through FY 2010	1	1	\$0	\$0
Acquired Other means through FY 2010	2	591	\$0	\$0
Total Acquired Through FY 2010	56	6,705	\$5,150,494	\$768
Planned FY 2011	1	32	\$125,000	\$3,906
Proposed FY 2012	1	135	\$500,000	\$3,704
Remaining	7	3,932	\$9,294,400	\$2,339
Totals	65	10,804	\$15,069,894	\$1,395

Purpose of Acquisition: To protect, restore, and create high-quality wetland habitat for waterfowl and other birds and wildlife, in support of the North American Waterfowl Management Plan. This area is home for the federally-threatened Eastern Prairie-Fringed Orchid, along with numerous state-threatened and endangered species.

Project Cooperators: Ohio Division of Wildlife, Ducks Unlimited, Black Swamp Conservancy, and The Nature Conservancy.

Project Description: Funds would acquire 135 fee acres, in one parcel, in Ottawa County, Ohio. Located on the Portage River, a short distance from and with direct access to Lake Erie, the parcel offers critical nesting, feeding, and migration habitat for the multitude of birds/ducks that migrate through and nest at the Refuge. The acquisition would preserve the acreage for the public and future generations.

The Lake Erie Marshes of Ottawa NWR are an important staging area for black ducks, whose numbers can reach 60,000 during migration. The Western Hemisphere Shorebird Reserve Network designated the Lake Erie Marshes as a Regional Reserve in 2000, recognizing the critical importance of the marshes to shorebirds. In 2000, the Lake Erie marshes were home to 47 of 88 nesting pairs of bald eagles.

O&M: The Service would use \$9,000 initially for restoration and enhancement work (spraying, mowing, burning, and signage) which the Service would fund from Refuge System base funding.

SAN PABLO BAY NATIONAL WILDLIFE REFUGE**California**

Acquisition Authority: Emergency Wetlands Resource Act of 1986, Endangered Species Act of 1973

FY 2012 Budget Priority: No. 35 of 63

Location: Northeast of San Francisco along the northern edge of San Pablo Bay between the cities of Vallejo and Novato in Sonoma, Napa and Solano Counties, CA

Congressional District: California, District 1 **FWS Region 8**

Total LWCF Appropriations: \$6,680,000

FY 2012 Budget Request: \$2,500,000

Acquisition Status:

	<u>Ownerships</u>	<u>Acres</u>	<u>Cost</u>	<u>\$/Acre</u>
Acquired Fee through FY 2010	5	13,190	\$6,742,600	\$511
Acquired Easement through FY 2010	0	0	\$0	\$0
Acquired Exchange through FY 2010	0	0	\$0	\$0
Acquired Donation through FY 2010	0	0	\$0	\$0
Acquired Other means through FY 2010	0	0	\$0	\$0
Total Acquired through FY 2010	5	13,190	\$6,742,600	\$511
Planned FY 2011	0	0	\$0	\$0
Proposed FY 2012	1	525	\$2,500,000	\$4,762
Remaining	6	8,781	\$170,757,407	\$19,446
Totals	12	22,496	\$180,000,007	\$8,001

Purpose of Acquisition: To protect bay wetlands for the use of endangered species, waterfowl, and shorebirds. The Bay marshes are identified as major tidal salt marshes of paramount importance to waterfowl in the San Francisco Bay area.

Project Cooperators: State of California

Project Description: Funds would acquire fee title to one tract consisting of approximately 525 acres. The acquisition property is active farms/hay fields, a larger threat being development. The Refuge provides critical migratory and wintering habitat for shorebirds and waterfowl. It also provides year-round habitat for endangered, threatened, and sensitive species.

O&M: The Service estimates annual costs of \$22,000 for general maintenance, \$4,000 for law enforcement, and \$19,000 for invasive plant control (through mechanical methods such as mowing); for a total of \$45,000, which the Service would fund from Refuge System base funding.

ST. VINCENT NATIONAL WILDLIFE REFUGE

Florida

Acquisition Authority: Migratory Bird Conservation Act

FY 2012 Budget Priority: No. 36 of 63

Location: An undeveloped barrier island in Franklin County, FL, just offshore from the mouth of the Apalachicola River, in the Gulf of Mexico

Congressional Districts: Florida, District 2 **FWS Region 4**

Total LWCF Appropriations: \$0

FY 2012 Budget Request: \$1,350,000

Acquisition Status:

	<u>Ownerships</u>	<u>Acres</u>	<u>Cost</u>	<u>\$/Acre</u>
Acquired Fee through FY 2010	2	12,404	\$2,035,000	\$164
Acquired Easement through FY 2010	0	0	\$0	\$0
Acquired Exchange through FY 2010	1	86	\$0	\$0
Acquired Donation through FY 2010	0	0	\$0	\$0
Acquired Other means through FY 2010	0	0	\$0	\$0
Total Acquired through FY 2010	3	12,490	\$2,035,000	\$163
Planned FY 2011	0	0	\$0	\$0
Proposed FY 2012	1	5	\$1,350,000	\$270,000
Remaining	10	927	\$3,708,000	\$4,000
Totals	14	13,422	\$7,093,000	\$528

Purpose of Acquisition: To restore and manage sensitive habitats along St. Vincent Sound for migratory birds, neotropical migratory songbirds, wintering waterfowl, arctic peregrine falcon, and bald eagle, among others.

Project Cooperator: The Trust for Public Land

Project Description: Funds would acquire fee title to approximately five acres of the only suitable deep-water mooring site in the vicinity, a property owned by The Trust for Public Land. Acquisition of the site is necessary for access and management of the St. Vincent Island Unit. Acquisition of this tract would allow restoration and management of sensitive habitats along St. Vincent Sound for migratory birds, neotropical migratory songbirds, wintering waterfowl, arctic peregrine falcon, and bald eagle, among others. It would also improve habitat conditions for the Florida black bear by protecting occupied bear habitat and connecting existing conservation lands to ensure protection of travel corridors.

O&M: The Service estimates initial costs of \$20,000 for boundary marking which the Service would fund from Refuge System base funding. There may be an initial dredging/rehabilitation cost which the Service would also fund from Refuge System base funding.

NISQUALLY NATIONAL WILDLIFE REFUGE

Washington

Acquisition Authority: Fish and Wildlife Act of 1956

FY 2012 Budget Priority: No. 37 of 63

Location: Approximately eight miles northeast of Olympia, Washington

Congressional Districts: Washington, Districts 3 and 9 **FWS Region 1**

Total LWCF Appropriations: \$991,624

FY 2012 Budget Request: \$1,500,000

Acquisition Status:

	<u>Ownerships</u>	<u>Acres</u>	<u>Cost</u>	<u>\$/Acre</u>
Acquired Fee through FY 2010	32	3,684	\$11,436,845	\$3,104
Acquired Easement through FY 2010	5	29	\$4,024	\$139
Acquired Exchange through FY 2010	1	10	\$0	\$0
Acquired Donation through FY 2010	5	168	\$0	\$0
Acquired Other means through FY 2010	1	486	\$0	\$0
Total Acquired through FY 2010	44	4,377	\$11,440,869	\$2,614
Planned FY 2011	4	237	\$1,500,000	\$6,329
Proposed FY 2012	2	270	\$1,500,000	\$5,556
Remaining	293	2,911	\$9,504,448	\$3,265
Totals	343	7,795	\$23,945,317	\$3,072

Purpose of Acquisition: Preservation and enhancement of wintering habitat for migratory birds within the Nisqually River Delta and of wetland habitat vital to conservation and protection of freshwater species, including the state-listed Oregon Spotted Frog along the Black River.

Project Cooperators: Ducks Unlimited, The Nature Conservancy, Friends of the Nisqually National Wildlife Refuge, and Capitol Land Trust.

Project Description: Funds requested would acquire fee title to priority tracts in the Black River Unit of the Refuge and along the Nisqually River Delta. Acquisition of these tracts would consolidate refuge ownership and facilitate restoration and conservation along vital habitat corridors contiguous to the Black River – Black Lake drainage and the Nisqually River. Acquisition would further strengthen the habitat and management of existing refuge lands in support of freshwater fish and wetland species, including the State-listed Oregon Spotted Frog.

O&M: The Service estimates an initial cost of \$15,000 for fencing and posting of boundaries which the Service would fund from Refuge System base funding.

YUKON FLATS NATIONAL WILDLIFE REFUGE
Alaska

Acquisition Authority: Alaska National Interest Lands Conservation Act (P.L. 96-487), Fish and Wildlife Act of 1956

FY 2012 Budget Priority: No. 38 of 63

Location: Interior Alaska, approximately 100 miles north of Fairbanks

Congressional Districts: Alaska, At Large **FWS Region 7**

Total LWCF Appropriations: \$2,497,960

FY 2012 Budget Request: \$600,000

Acquisition Status:

	<u>Ownerships</u>	<u>Acres</u>	<u>Cost</u>	<u>\$/Acre</u>
Acquired Fee through FY 2010	36	5,864	\$2,497,960	\$426
Acquired Easement through FY 2010	0	0	\$0	\$0
Acquired Exchange through FY 2010	0	0	\$0	\$0
Acquired Donation through FY 2010	0	0	\$0	\$0
Acquired Other means through FY 2010	0	0	\$0	\$0
Total Acquired through FY 2010	36	5,864	\$2,497,960	\$426
Planned FY 2011	4	280	\$155,000	\$554
Proposed FY 2012	7	1,200	\$600,000	\$500
Remaining	37	5,875	\$2,378,334	\$405
Totals	84	13,219	\$5,631,294	\$426

Purpose of Acquisition: To conserve prime waterfowl habitats along river corridors and lake shores and promote landscape level conservation within the Northwestern Interior Forest Landscape Conservation Cooperative.

Project Cooperators: Alaska Native Corporations and State of Alaska.

Project Description: Funds would acquire 1,200 fee acres in seven priority riparian parcels within some of the most productive waterfowl habitats in the United States. Recent surveys indicate that private inholdings support more than 50 percent of the Refuge’s total waterfowl production. In addition to waterfowl, these parcels support moose, bears, wolverine, lynx, and beaver. The adjacent streams contain Arctic grayling, Arctic char, whitefish, sheefish, northern pike, burbot, and chum, chinook, and coho salmon.

The acquisition of these parcels would provide long-term conservation of important wetland habitats, ensure access to important breeding areas for ongoing monitoring and research, simplify management, and provide opportunities for recreational and subsistence uses. Acquisition would also enable the Service to restore the natural fire regime and eliminate expensive fire-suppression efforts, resulting in a potential net cost savings for the Service. Fire is an integral component of the ecology of this fire-dependent ecosystem, but must be suppressed when private lands are threatened.

O&M: The Service anticipates no additional costs associated with this acquisition as the parcel is located within refuge boundaries and would add no additional workload.

TRINITY RIVER NATIONAL WILDLIFE REFUGE

Texas

Acquisition Authority: Fish and Wildlife Act of 1956

FY 2012 Budget Priority: No. 39 of 63

Location: Approximately 48 miles east of Houston, TX, 44 miles west of Beaumont, TX

Congressional Districts: Texas, Districts 2 and 8 **FWS Region 2**

Total LWCF Appropriations: \$7,055,800

FY 2012 Budget Request: \$500,000

Acquisition Status:

	<u>Ownerships</u>	<u>Acres</u>	<u>Cost</u>	<u>\$/Acre</u>
Acquired Fee through FY 2010	12	8,594	\$5,211,500	\$606
Acquired Easement through FY 2010	0	0	\$0	\$0
Acquired Exchange through FY 2010	0	0	\$0	\$0
Acquired Donation through FY 2010	1	775	\$0	\$0
Acquired Other means through FY 2010	20	14,480	\$11,474,152	\$792
Total Acquired through FY 2010	33	23,849	\$16,685,652	\$700
Planned FY 2011	2	1,759	\$1,500,000	\$853
Proposed FY 2012	1	550	\$500,000	\$909
Remaining	86	53,442	\$37,026,601	\$693
Totals	122	79,600	\$55,712,253	\$700

Purpose of Acquisition: Funding would provide for the fee title acquisition of an estimated 550 acres of high priority habitat from two ownerships lying within the approved Refuge boundary. The acquisition of this tract would protect bottomland hardwoods and associated habitats for migratory birds within the Lower Trinity River Floodplain Habitat Stewardship Program. The proposed tracts would provide essential foraging and roosting habitat for wood duck, mallard, gadwall, widgeon, green and blue-winged teal, lesser scaup, as well as some habitat for the mottled duck. Mature cavity trees provide nesting habitat for wood duck and black-bellied whistling ducks. Acquisition of this tract would allow the Refuge to maintain and enhance prime waterfowl wintering, feeding, and roosting areas.

Project Cooperators: The Conservation Fund and National Fish and Wildlife Foundation.

Project Description: Trinity River was established to protect a remnant of the bottomland hardwood forest ecosystem along the Trinity River. It is one of only 14 priority-one bottomland sites identified for protection in the Texas Bottomland Protection Plan. The Refuge is located within the Lower Mississippi Joint Venture Project Area of the North American Waterfowl Management plan. It contains valuable habitat for a diversity of waterfowl species. This habitat is used during migration or nesting by nearly 50 percent of the neotropical migratory bird species listed by the Service. Bottomland hardwood forests also support abundant populations of white-tailed deer, squirrels, freshwater turtles, alligators, snakes, river otters, and the federally listed bald eagle.

O&M: The Service estimates initial costs at \$2,000 for signage and boundary posting which the Service would fund from Refuge System base funding.

**RED ROCK LAKES NATIONAL WILDLIFE REFUGE / CENTENNIAL VALLEY
Montana**

Acquisition Authority: Fish and Wildlife Act of 1956

FY 2012 Budget Priority: No. 40 of 63

Location: 28 miles east of Monida, MT

Congressional Districts: Montana, At Large **FWS Region 6**

Total LWCF Appropriations: \$7,867,130 (Includes Emergency/Hardship and Title VIII funds)

FY 2012 Budget Request: \$1,500,000

Acquisition Status:

	<u>Ownerships</u>	<u>Acres*</u>	<u>Cost</u>	<u>\$/Acre</u>
Acquired Fee through FY 2010	13	10,548	\$10,688,455	\$1,013
Acquired Easement through FY 2010	6	16,187	\$4,212,150	\$260
Acquired Exchange through FY 2010	2	2	\$0	\$0
Acquired Donation through FY 2010	2	6,004	\$0	\$0
Acquired Other means through FY 2010**	2	42,562	\$35,834	\$1
Total Acquired through FY 2010	25	75,303	\$14,936,439	\$198
Planned FY 2011	1	670	\$3,052,081	\$4,555
Proposed FY 2012	1	300	\$1,500,000	\$5,000
Remaining	37	25,589	\$11,761,480	\$460
Totals	64	101,862	\$31,250,000	\$307

*MBCF, NAWCA and FLTFA incidental cost included.

Purpose of Acquisition: To provide for long-term viability of fish and wildlife habitat on a large landscape in the Greater Yellowstone Ecosystem. The project would protect, restore, and enhance native wet meadows, wetlands, uplands, and mountain foothills for migratory birds and other wildlife. Additional lands would be available for wildlife-dependent public uses (hunting, fishing, wildlife observation and photography, and environmental education and interpretation). Protection of this landscape would preserve the key wilderness values of the Refuge and surrounding view shed of the Centennial Valley.

Project Cooperators: The Nature Conservancy, Montana Fish, Wildlife and Parks, Beaverhead County Commissioners, Bureau of Land Management, and Greater Yellowstone Coordinating Council.

Project Description: Funds would acquire 300 acres for the third phase of a multi-year fee acquisition for one of the Refuge’s most important remaining tracts. The Elizabeth Grazing Association tract includes nearly one mile on both sides of Red Rock Creek, which supplies most of the water for the Refuge wetland complex. It includes a large riparian wetland complex that provides habitat for 21 species of waterfowl and 35 species of other wetland-dependent birds. Acquisition of this property would enable the Service to restore this portion of the creek and improve water quality in Upper Red Rock Lake on the Refuge. Acquisition would also expand opportunities for wildlife-dependent recreation on the east end of the Refuge. If not acquired, the tract could be developed into home sites.

O&M: The Service estimates annual costs of \$1,000 for fencing and stream restoration which would be funded from non-federal grant funds.

WILLAPA NATIONAL WILDLIFE REFUGE

Washington

Acquisition Authority: Fish and Wildlife Act of 1956

FY 2012 Budget Priority: No. 41 of 63

Location: 25 miles southwest of South Bend, Washington

Congressional Districts: Washington, District 3 **FWS Region 1**

Total LWCF Appropriations: \$12,018,000

FY 2012 Budget Request: \$500,000

Acquisition Status:

	<u>Ownerships</u>	<u>Acres</u>	<u>Cost***</u>	<u>\$/Acre</u>
Acquired Fee through FY 2010	40	*11,559	\$7,344,928	\$635
Acquired Easement through FY 2010	3	**3,123	\$0	\$0
Acquired Exchange through FY 2010	0	0	\$0	
Acquired Donation through FY 2010	3	1,754	\$0	\$0
Acquired Other means through FY 2010	1	0	\$8,518,000	
Total Acquired through FY 2010	47	16,436	\$15,862,928	\$965
Planned FY 2011	2	290	\$1,500,000	\$5,172
Proposed FY 2012	2	170	\$500,000	\$2,941
Remaining	2	607	\$1,144,195	\$1,885
Totals	53	17,503	\$19,007,123	\$1,086

* Includes 8,616 acres (\$5,122,011) acquired with MBCF funds and incidental acquisition costs

** 3,123 acres donated easement

*** \$8,518,000 for timber rights on Weyco land, no acreage

Purpose of Acquisition: To protect, restore, and manage areas of forest, streams, and wetlands; provide refuge for breeding and migrating waterfowl and shorebirds; contribute to the conservation and recovery of threatened and endangered species; and provide for increased opportunities for wildlife-dependent recreation, education, and research.

Project Cooperators: The Nature Conservancy and Columbia Land Trust.

Project Description: Funds would acquire all or part of 170 acres in two ownerships. These tracts are surrounded by Service land and contain upland forest, a large beaver marsh wetland, and several streams with cutthroat trout, federally threatened Coho, and chum salmon. The areas are important to federal and state endangered/threatened species and most migratory bird species using the Pacific Flyway.

O&M: The Service estimates annual costs of \$500 for fence maintenance and removal which the Service would fund from Refuge System base funding.

**SACRAMENTO RIVER NATIONAL WILDLIFE REFUGE
California**

Acquisition Authority: Fish and Wildlife Act of 1956 and Endangered Species Act of 1973

FY 2012 Budget Priority: No. 42 of 63

Location: One-hundred mile stretch of the Sacramento River between Colusa and Red Bluff, California

Congressional District: California, District 2 **FWS Region 8**

Total LWCF Appropriations: \$28,992,392

FY 2012 Budget Request: \$2,500,000

Acquisition Status:

	<u>Ownerships</u>	<u>Acres</u>	<u>Cost</u>	<u>\$/Acre</u>
Acquired Fee through FY 2010	31	10,281	\$28,733,362	\$2,795
Acquired Easement through FY 2010	2	1,306	\$773,230	\$592
Acquired Exchange through FY 2010	1	9	\$12,000	\$1,333
Acquired Donation through FY 2010	1	35	\$0	\$0
Acquired Other means through FY2010	0	0	\$0	\$0
Total Acquired through FY 2010	35	11,631	\$29,518,592	\$2,538
Planned FY 2011	2	174	\$1,300,000	\$7,471
Proposed FY 2012	5	225	\$2,500,000	\$11,111
Remaining	75	5,970	\$37,681,408	\$6,312
Totals	117	18,000	\$71,000,000	\$3,944

Purpose of Acquisition: To preserve riparian habitat for four federally listed endangered or threatened species and six candidate species.

Project Cooperators: State of California and The Nature Conservancy.

Project Description: Funding would acquire fee title to five tracts comprising approximately 225 acres. The acquisition of these tracts would protect extremely rare riparian forest habitat consisting of beneficial woodlands and wetlands adjacent to and dependent upon the water of streams, sloughs, rivers, and lakes. This riparian wetland community is considered among the most important wildlife habitats in California and North America. The continued acquisition of lands within this project boundary would secure 60 sites along 100 miles of the riparian Sacramento River corridor. These lands would preserve and restore habitat for threatened and endangered species, waterfowl and other migratory birds, other wildlife, anadromous fish, and plants.

O&M: The Service estimates annual costs at \$5,100 for weed control, road maintenance, signage and posting, and law enforcement patrols, which the Service would fund from Refuge System base funding. The Service estimates initial costs of \$680,000 for three years of restoration work, to include orchard removal, land preparation and irrigation, materials, and planting and maintenance. Restoration activities are typically funded through various grant opportunities.

RACHEL CARSON NATIONAL WILDLIFE REFUGE

Maine

Acquisition Authority: Refuge Recreation Act of 1956

FY 2012 Budget Priority: No. 43 of 63

Location: York and Cumberland Counties, Maine

Congressional Districts: Maine, District 1 **FWS Region 5**

Total LWCF Appropriations: \$24,847,809

FY 2012 Budget Request: \$750,000

Acquisition Status:

	<u>Ownerships</u>	<u>Acres</u>	<u>Cost</u>	<u>\$/Acre</u>
Acquired Fee through FY 2010	319	5,501	\$24,847,809	\$4,517
Acquired Easement through FY 2010	1	42	\$319,830	\$7,615
Acquired Exchange through FY 2010	0	0	\$0	\$0
Acquired Donation through FY 2010	1	152	\$0	\$0
Acquired Other means through FY 2010	0	0	\$0	\$0
Total Acquired through FY 2010	321	5,695	\$25,167,639	\$4,419
Planned FY 2011	0	0	\$0	\$0
Proposed FY 2012	1	116	\$750,000	\$6,466
Remaining	429	8,709	\$32,542,464	\$3,737
Totals	751	14,520	\$58,460,103	\$4,026

Purpose of Acquisition: To preserve migratory bird habitat and waterfowl migration routes associated with the Mousam River estuary.

Project Cooperator: The Trust for Public Land.

Project Description: Funds would acquire fee title to a 116-acre tract in the Mousam River Division of the Refuge. The property’s habitats include forested wetland, salt marsh, upland forest, and scrub-shrub land. These habitat types fulfill the needs at various life-cycle stages for such key federal trust resources as American black duck, bobolink, American woodcock, alewife, and wood thrush, among others. This acquisition would benefit wildlife, and it would provide wildlife-dependent recreation and education for the public in one of the most densely populated coastal regions.

O&M: The Service anticipates no additional operations or maintenance costs associated with this acquisition as the parcel is located within refuge boundaries and would add no additional workload.

**TULARE BASIN WILDLIFE MANAGEMENT AREA
California**

Acquisition Authority: Migratory Bird Conservation Act of 1929 (45 Stat 1222), Migratory Bird Hunting Act of March 16, 1934

FY 2012 Budget Priority: No. 44 of 63

Location: 35 miles northwest of Bakersfield, CA, in the southern San Joaquin Valley

Congressional District: California, District 22 **FWS Region 8**

Total LWCF Appropriations: \$0

FY 2012 Budget Request: \$2,000,000

Acquisition Status:

	<u>Ownerships</u>	<u>Acres</u>	<u>Cost</u>	<u>\$/Acre</u>
Acquired Fee through FY 2010	0	0	\$0	\$0
Acquired Easement through FY 2010	3	1,042	\$1,509,585	\$1,449
Acquired Exchange through FY 2010	0	0	\$0	\$0
Acquired Donation through FY 2010	0	0	\$0	\$0
Acquired Other means through FY 2010	0	0	\$0	\$0
Total Acquired through FY 2010	3	1,042	\$1,509,585	\$1,449
Planned FY 2011	0	0	\$0	\$0
Proposed FY 2012	2	1,000	\$2,000,000	\$2,000
Remaining	609	19,958	\$51,490,415	\$2,580
Totals	614	22,000	\$55,000,000	\$2,500

Purpose of Acquisition: Tulare Basin Wildlife Management Area supports bird use and has a long tradition of recreational hunting. Tulare Basin wetlands have hosted wintering waterfowl concentrations in excess of 100,000 birds in recent years. The WMA was approved by the Director in October of 2007 to stem the rate of habitat fragmentation and to help achieve Central Valley Joint Venture wintering waterfowl habitat goals to protect, enhance, or restore wetlands.

The region supports the last remnant wetlands and wildlife habitat left in a dramatically altered Tulare Lake watershed. Associated upland habitats historically supported threatened and endangered species on a year round basis, including populations of San Joaquin kit fox, Tipton kangaroo rat, and blunt-nosed leopard lizard. The Tulare Basin WMA is closely associated with Kern and Pixley National Wildlife Refuges, two California Department of Fish and Game Ecological Areas, and a mosaic of private wetlands surrounded by agricultural operations.

Project Cooperators: State of California

Project Description: Funds would acquire approximately 1,000 acres in perpetual conservation easements on two tracts. The proposed acquisitions are currently managed as private hunting clubs. Management of the property for wildlife habitat and recreational hunting is compatible with Refuge conservation objectives for migratory waterfowl. The region supports the last remnant wetlands and wildlife habitat left in a dramatically altered Tulare Lake watershed. Associated upland habitats historically supported threatened and endangered species on a year round basis, including populations of San Joaquin kit fox, Tipton

kangaroo rat, and blunt-nosed leopard lizard. The Tulare Basin WMA is closely associated with Kern and Pixley National Wildlife Refuges, two California Department of Fish and Game Ecological Areas, and a mosaic of private wetlands surrounded by agricultural operations.

O&M: The Service anticipates no additional operations or maintenance costs associated with this acquisition, as the conservation easements are privately managed duck clubs. The Service would fund any expenses from Refuge System base funding.

CAHABA RIVER NATIONAL WILDLIFE REFUGE
Alabama

Acquisition Authority: Cahaba River Act (Public Law 106-331)

FY 2012 Budget Priority: No. 45 of 63

Location: Approximately 40 miles southwest of Birmingham, in Bibb County, AL

Congressional Districts: Alabama, District 6 **FWS Region 4**

Total LWCF Appropriations: \$6,396,717

FY 2012 Budget Request: \$1,000,000

Acquisition Status:

	<u>Ownerships</u>	<u>Acres</u>	<u>Cost</u>	<u>\$/Acre</u>
Acquired Fee through FY 2010	1	3,608	\$6,079,718	\$1,685
Acquired Easement through FY 2010	0	0	\$0	\$0
Acquired Exchange through FY 2010	0	0	\$0	\$0
Acquired Donation through FY 2010	0	0	\$0	\$0
Acquired Other means through FY 2010	0	0	\$0	\$0
Total Acquired through FY 2010	1	3,608	\$6,079,718	\$1,685
Planned FY 2011	3	163	\$500,000	\$3,067
Proposed FY 2012	1	500	\$1,000,000	\$2,000
Remaining	3	3,403	\$5,530,716	\$1,625
Totals	8	7,674	\$13,110,434	\$1,708

Purpose of Acquisition: To protect the unique natural resources of the Cahaba River and provide hunting and recreational opportunities.

Project Cooperators: The Nature Conservancy

Project Description: Funding would acquire fee title to approximately 500 acres of a 1,645-acre tract of high priority habitat in the northeast part of the Refuge. This would be a phased acquisition as funds become available. The acquisition of this tract would directly support the recovery of numerous endangered and imperiled fish, mollusk, and plant species, including the Cahaba shiner, goldline darter, round rocksnail, cylindrical lioplax, and aster georgianus. In addition, this tract would provide habitat for several species of neotropical migratory songbirds, eagles, ospreys, and local resident game populations. Acquisition would also provide recreational opportunities for hunting, fishing, and bird watching.

Poor commercial forestry practices and coal methane mining contribute to erosion, siltation, degradation, and contamination of water quality in the Cahaba River watershed. If the tract is not acquired by the Service, but instead sold for industrial uses, these practices would adversely impact the watershed habitat and the wildlife on the Refuge.

O&M: The Service anticipates no additional operation and maintenance costs associated with this acquisition as the parcel is located within refuge boundaries and would add no additional workload.

MIDDLE MISSISSIPPI RIVER NATIONAL WILDLIFE REFUGE
Missouri, Illinois

Acquisition Authority: Emergency Wetlands Resources Act of 1986

FY 2012 Budget Priority: No. 46 of 63

Location: Sixty miles south of St. Louis, MO

Congressional Districts: Missouri, Districts 1, 2, and 3 **FWS Region 3**
 Illinois, District 12

Total LWCF Appropriations: \$4,000,000

FY 2012 Budget Request: \$700,000

Acquisition Status:

	<u>Ownerships</u>	<u>Acres</u>	<u>Cost</u>	<u>\$/Acre</u>
Acquired Fee through FY 2010	17	4,504	\$3,069,900	\$682
Acquired Easement through FY 2010	0	0	\$0	\$0
Acquired Exchange through FY 2010	0	0	\$0	\$0
Acquired Donation through FY 2010	12	3,287	\$0	\$0
Acquired Other means through FY 2010	0	0	\$0	\$0
Total Acquired Fee through FY 2010	29	7,791	\$3,069,900	\$394
Planned FY 2011	1	150	\$500,000	\$3,333
Proposed FY 2012	1	175	\$700,000	\$4,000
Remaining	34	2,688	\$9,831,562	\$3,658
Totals	65	10,804	\$14,101,462	\$1,305

Purpose of Acquisition: To preserve, restore, and manage wetlands and bottomland forest habitat in support of the North American Waterfowl Management Plan.

Project Cooperators: The States of Missouri, Illinois, and Iowa; the American Land Conservancy, American Rivers, and the U.S. Army Corps of Engineers.

Project Description: Funds requested would allow for the acquisition of 175 fee acres owned by a private individual on Horse Island in Perry County, MO. This unique tract represents 84 percent of a Mississippi River island, and it is a critical location for nesting and migrating birds and big river habitats. The acquisition would preserve the island for use by the public and future generations.

The Refuge provides important habitat for nesting and migrating birds, as well as spawning and feeding habitat for big river fish species. The management of these lands contributes to increased floodplain function, floodwater storage, and nutrient cycling to increase river quality.

O&M: The Service estimates \$5,000 initially for restoration and enhancement work (spraying, mowing, burning, fencing supplies, and signage) which the Service would fund from Refuge System base funding.

INNOKO NATIONAL WILDLIFE REFUGE

Alaska

Acquisition Authority: Alaska National Interest Lands Conservation Act (P.L. 96-487), Fish and Wildlife Act of 1956

FY 2012 Budget Priority: No. 47 of 63

Location: West central Alaska, approximately 350 miles southwest of Fairbanks

Congressional Districts: Alaska, At Large **FWS Region 7**

Total LWCF Appropriations: \$692,500

FY 2012 Budget Request: \$300,000

Acquisition Status:

	<u>Ownerships</u>	<u>Acres</u>	<u>Cost</u>	<u>\$/Acre</u>
Acquired Fee through FY 2010	4	480	\$292,500	\$609
Acquired Easement through FY 2010	0	0	\$0	\$0
Acquired Exchange through FY 2010	0	0	\$0	\$0
Acquired Donation through FY 2010	0	0	\$0	\$0
Acquired Other means through FY 2010	0	0	\$0	\$0
Total Acquired through FY 2010	4	480	\$292,500	\$609
Planned FY 2011	0	0	\$0	\$0
Proposed FY 2012	3	480	\$300,000	\$625
Remaining	65	7,600	\$4,697,580	\$618
Totals	72	8,560	\$5,290,080	\$618

Purpose of Acquisition: To conserve prime riparian and wetland habitats in the Innoko Wilderness and the Northwestern Interior Forest Landscape Conservation Cooperative.

Project Cooperators: Alaska Native Corporations and State of Alaska.

Project Description: Funds would acquire fee title to three priority parcels, comprising 480 acres, located within the Innoko Wilderness. The Refuge is one of the most important waterfowl areas in west-central interior Alaska. Its vast wetlands are crucial for waterfowl nesting, resting, staging, and molting. An estimated 130 species of birds, including many species of neotropical migrants and more than 300,000 waterfowl and shorebirds nest on the Refuge every spring. In addition, fur-bearers, moose, and both black and grizzly bears frequent the area. A number of private riverfront and lakefront parcels are scattered across this productive area. Acquisition of key parcels would prevent incompatible development, ensure long-term conservation, and protect subsistence and recreational uses.

The parcels are within a fire-dependent ecosystem — wildland fire plays a critical role in maintaining a healthy ecosystem. However, fires must be suppressed when they threaten private lands. Acquisition of these parcels, eliminating suppression activities, and restoring the natural fire regime, would promote ecosystem health and result in a net cost savings for the government.

O&M: The Service anticipates no additional operations or maintenance costs associated with this acquisition as the parcel is located within refuge boundaries and would add no additional workload.

ALLIGATOR RIVER NATIONAL WILDLIFE REFUGE

North Carolina

Acquisition Authority: Fish and Wildlife Act of 1956, Refuge Recreation Act of 1962, and the Emergency Wetlands Resources Act of 1986

FY 2012 Budget Priority: No. 48 of 63

Location: Coast of North Carolina near Manteo, about 30 miles south of NC/VA border

Congressional Districts: North Carolina, District 3 **FWS Region 4**

Total LWCF Appropriations: \$7,643,492

FY 2012 Budget Request: \$1,000,000

Acquisition Status:

	<u>Ownerships</u>	<u>Acres</u>	<u>Cost</u>	<u>\$/Acre</u>
Acquired Fee through FY 2010	15	27,748	\$6,791,267	\$245
Acquired Easement through FY 2010	0	0	\$0	\$0
Acquired Exchange through FY 2010	1	34	\$0	\$0
Acquired Donation through FY 2010	3	125,759	\$0	\$0
Acquired Other means through FY 2010	1	0*	\$6,000	\$0
Total Acquired through FY 2010	20	153,541	\$6,797,267	\$44
Planned FY 2011	0	0	\$0	\$0
Proposed FY 2012	2	1,194	\$1,000,000	\$838
Remaining	14	85,139	\$72,371,450	\$850
Totals	36	239,874	\$80,168,717	\$334

*Funds expended on lease that is now expired.

Purpose of Acquisition: To preserve and protect a unique wetland habitat and its associated wildlife species and to protect land from immediate threat of residential development.

Project Cooperators: The Nature Conservancy

Project Description: Funding would acquire fee title to two tracts comprising approximately 1,194 acres. The tracts feature a variety of habitats, including high and low pocosin, bogs, fresh and brackish water marshes, hardwood swamps, and Atlantic white cedar swamps. Considered among the last remaining strongholds for black bear in eastern North Carolina and on the mid-Atlantic coast, the Refuge provides valuable habitat for concentrations of ducks, geese, and swans, as well as habitat for wading birds, shorebirds, American woodcock, raptors, American alligators, white-tailed deer, raccoons, rabbits, quail, river otters, red-cockaded woodpeckers, and migrating songbirds. It also serves as the core area for re-establishing the red wolf.

O&M: The Service would use \$15,000 initially for posting of tract boundaries which the Service would fund from Refuge System base funding.

SAN DIEGO NATIONAL WILDLIFE REFUGE
California

Acquisition Authority: Endangered Species Act of 1973, Fish and Wildlife Act of 1956

FY 2012 Budget Priority: No. 49 of 63

Location: Approximately 15 miles east of the City of San Diego

Congressional District: California, Districts 50, 51, and 52 **FWS Region 8**

Total LWCF Appropriations: \$33,392,904

FY 2012 Budget Request: \$2,000,000

Acquisition Status:

	<u>Ownerships</u>	<u>Acres</u>	<u>Cost</u>	<u>\$/Acre</u>
Acquired Fee through FY 2010	50	4957	\$31,133,920	\$6,281
Acquired Easement through FY 2010	0	0	\$0	\$0
Acquired Exchange through FY 2010	0	0	\$0	\$0
Acquired Donation through FY 2010	15	4253	\$0	\$0
Acquired Other means through FY 2010	0	0	\$0	\$0
Total Acquired through FY 2010	65	9,210	\$31,133,920	\$3,380
Planned FY 2011	4	80	\$1,500,000	\$18,750
Proposed FY 2012	8	120	\$2,000,000	\$16,667
Remaining	436	28,483	\$55,366,080	\$1,944
Totals	513	37,893	\$90,000,000	\$2,375

Purpose of Acquisition: To protect and recover endangered or threatened plant and animal species, including the coastal California gnatcatcher, Otay tarplant and Quino checkerspot butterfly.

Project Cooperators: Public and private partners that participate in the State of California’s Natural Communities Conservation Planning program and the San Diego Multiple Species Conservation Plan (MSCP).

Project Description: Funds would acquire fee title to approximately 120 acres of mostly undisturbed coastal sage and chaparral. Acquisition of these three inland tracts would extend the Service’s successful efforts with more than a dozen local jurisdictions, the California Department of Fish and Game, and many private landowners to protect 172,000 acres of natural habitat within a 582,000-acre planning area. Acquisition of these mountainous upland tracts would assist in recovery efforts by providing opportunities to protect and restore habitat by creating a buffer from surrounding high-density development and limiting off-road access.

O&M: The Service anticipates no additional operations or maintenance costs associated with this acquisition as the tracts are located within refuge boundaries and would add no additional workload.

**CHERRY VALLEY NATIONAL WILDLIFE REFUGE
Pennsylvania**

Acquisition Authority: Fish and Wildlife Act of 1956

FY 2012 Budget Priority: No. 50 of 63

Location: Within the municipalities of Chestnuthill, Delaware Water Gap, Hamilton, Ross, Smithfield, and Stroud in Monroe County, PA

Congressional Districts: Pennsylvania, District 11 **FWS Region 5**

Total LWCF Appropriations: \$750,000

FY 2012 Budget Request: \$500,000

Acquisition Status:

	<u>Ownerships</u>	<u>Acres</u>	<u>Cost</u>	<u>\$/Acre</u>
Acquired Fee through FY 2010	1	186	\$750,000	\$4,032
Acquired Easement through FY 2010	0	0	\$0	\$0
Acquired Exchange through FY 2010	0	0	\$0	\$0
Acquired Donation through FY 2010	0	0	\$0	\$0
Acquired Other means through FY 2010	0	0	\$0	\$0
Total Acquired through FY 2010	1	186	\$750,000	\$4,032
Planned FY 2011	1	90	\$500,000	\$5,556
Proposed FY 2012	4	86	\$500,000	\$5,814
Remaining	144	20,084	\$80,673,000	\$4,017
Totals	150	20,446	\$82,423,000	\$4,031

Purpose of Acquisition: To protect fisheries and wildlife resources and provide public access to refuge lands.

Project Cooperators: The Nature Conservancy

Project Description: Funds would acquire fee title to four tracts comprising 86 acres. The first tract encompasses lands required by the conservation plan for Hartman Cave, a hibernacula for four species of bats and an historic site for the endangered Indiana bat (*Myotis sodalis*). The second tract, with frontage on Cherry Creek, provides habitat for the threatened bog turtle (*Clemmys muhlenbergi*) and other wildlife. The third tract, located high on the Kittetiny Ridge, provides habitat along a nationally important migratory route for raptors and many species of migratory birds. The fourth tract would provide quality habitat for threatened and endangered species. Acquisition of these tracts would protect a large number migratory and resident woodland bird species, support the recovery of the threatened bog turtle (*Clemmys muhlenbergi*), and provide key habitat for migrating raptors. The acquisition would also provide potential recreation opportunities for hunting and bird watching.

O&M: The Service anticipates no additional operations or maintenance costs associated with this acquisition as the parcel is located within refuge boundaries and would add no additional workload.

KANUTI NATIONAL WILDLIFE REFUGE

Alaska

Acquisition Authority: Alaska National Interest Lands Conservation Act (P.L. 96-487), Fish and Wildlife Act of 1956

FY 2012 Budget Priority: No. 51 of 63

Location: North-central Alaska, approximately 125 miles northwest of Fairbanks

Congressional Districts: Alaska, At Large **FWS Region 7**

Total LWCF Appropriations: \$68,000

FY 2012 Budget Request: \$300,000

Acquisition Status:

	<u>Ownerships</u>	<u>Acres</u>	<u>Cost</u>	<u>\$/Acre</u>
Acquired Fee through FY 2010	1	160	\$68,000	\$425
Acquired Easement through FY 2010	0	0	\$0	\$0
Acquired Exchange through FY 2010	0	0	\$0	\$0
Acquired Donation through FY 2010	0	0	\$0	\$0
Acquired Other means through FY 2010	0	0	\$0	\$0
Total Acquired through FY 2010	1	160	\$68,000	\$425
Planned FY 2011	0	0	\$0	\$0
Proposed FY 2012	4	600	\$300,000	\$500
Remaining	31	5,160	\$2,467,680	\$478
Totals	36	5,920	\$2,835,680	\$479

Purpose of Acquisition: To conserve prime waterfowl and furbearer habitats in an extensive and highly productive wetland area within the Northwestern Interior Forest Landscape Conservation Cooperative.

Project Cooperators: Alaska Native Corporations and State of Alaska.

Project Description: Funds would acquire fee title to 600 acres in four high-priority riparian parcels located in the highly productive Kanuti Flats. This extensive wetland supports the majority of the Refuge’s waterfowl, furbearers, moose, and bears. Greater white-fronted geese, tundra and trumpeter swans, many species of ducks, shorebirds, raptors, songbirds, moose, and beaver depend on these productive habitats. Service acquisition would ensure the land will remain in a natural, undeveloped state and will continue to be available for subsistence uses by local residents.

The parcels are within a fire-dependent ecosystem--wild fires create a productive mosaic of habitats in various states of succession. However, fires must be suppressed if private parcels are threatened. Acquisition of these parcels would enable the Service to restore the natural fire regime and eliminate expensive fire suppression efforts, yielding a net cost benefit for the Service.

O&M: The Service anticipates no additional operations or maintenance costs associated with this acquisition as the parcel is located within refuge boundaries and would add no additional workload.

PATOKA RIVER NATIONAL WILDLIFE REFUGE**Indiana**

Acquisition Authority: Emergency Wetlands Resources Act of 1986

FY 2012 Budget Priority: No. 52 of 63

Location: Portions of Pike and Gibson Counties

Congressional District: Indiana, District 8 **FWS Region 3**

Total LWCF Appropriations: \$5,697,140

FY 2012 Budget Request: \$900,000

Acquisition Status:

	<u>Ownerships</u>	<u>Acres</u>	<u>Cost</u>	<u>\$/Acre</u>
Acquired Through FY 2010	88	6,116	\$5,530,760	\$904
Acquired Easement Through FY 2010	0	0	\$0	\$0
Acquired Donation Through FY 2010	8	358	\$0	\$0
Acquired Exchange Through FY 2010	1	187	\$1,800	\$10
Acquired Other means through FY 2010	0	0	\$0	\$0
Total Acquired Through FY 2010	97	6,661	\$5,532,560	\$831
Planned FY 2011	11	1,182	\$1,418,400	\$1,200
Proposed FY 2012	6	585	\$900,000	\$1,538
Remaining	146	13,514	\$20,503,500	\$1,517
Totals	260	21,942	\$28,354,460	\$1,292

Purpose of Acquisition: To protect and manage this nationally significant wetland complex for the plant and animal species present, including the threatened bald eagle, endangered Indiana bat, and endangered least interior terns.

Project Cooperators: The North American Waterfowl Management Program local committee, Friends of the Patoka River, Ducks Unlimited, the Natural Resource Conservation Service, Indiana Department of Natural Resources Divisions of Fish and Wildlife, Reclamation and Forestry, Evansville Audubon Society, Indiana Wildlife Federation, the Izaak Walton League, Hoosier Environmental Council, The Nature Conservancy, The Conservation Fund, Gibson County Coal Company, and Duke Energy Inc.

Project Description: Funds would acquire fee title to seven tracts comprising 585 acres. Acquisition of these tracts would protect and restore wetlands with bottomland hardwood that are threatened in the Midwest. The land would provide habitat for wildlife and sustain plant life. Additionally, the acreage would provide recreational and economic opportunities for the area.

O&M: The Service would use \$20,000 for boundary posting, initial restoration, and enhancement work, which the Service would fund from Refuge System base funding.

TUALATIN RIVER NATIONAL WILDLIFE REFUGE

Oregon

Acquisition Authority: Fish and Wildlife Act of 1956

FY 2012 Budget Priority: No. 53 of 63

Location: Approximately 16 miles southwest of Portland, OR, in rural-suburban Washington County along OR99 on the outskirts of Sherwood, OR

Congressional Districts: Oregon, District 1 **FWS Region 1**

Total LWCF Appropriations: \$6,995,000

FY 2012 Budget Request: \$750,000

Acquisition Status:

	<u>Ownerships</u>	<u>Acres</u>	<u>Cost**</u>	<u>\$/Acre</u>
Acquired Fee through FY 2010	25	1,759	\$11,778,540	\$6,696
Acquired Easement through FY 2010	6	3	\$143,837	\$47,946
Acquired Exchange through FY 2010	0	0	\$0	\$0
Acquired Donation through FY 2010	4	198	\$0	\$0
Acquired Other means through FY 2010	5	217	\$1,003,348	\$4,624
Total Acquired through FY 2010	40	2,177	\$12,925,725	\$5,937
Planned FY 2011	0	0	\$0	\$0
Proposed FY 2012	4	150	\$750,000	\$5,000
Remaining	99	74,953	\$412,250,000	\$5,500
Totals	143	77,280	\$425,925,725	\$5,511

** Includes incidental acquisition costs, \$2,000,000 flood dollars, \$800,000 FLTFA and \$2,437,118 Bonneville Power Administration mitigation funds.

Purpose of Acquisition: To preserve intact riparian forest and enhance wildlife habitat through forested wetland restoration.

Project Cooperators: The Nature Conservancy, Tualatin Riverkeepers, and The Conservation Fund.

Project Description: Funding of the acquisition would allow for forested wetland and riparian forest restoration. Less than eight percent of the bottomland forest remains today in the Willamette and Tualatin River Valleys of Oregon. These riparian vegetation communities are crucial for maintaining the ecological integrity of the river. The diverse wetland and upland habitat types provide critical benefit for wintering dusky and cackling Canada geese, populations of mallard and northern pintail, breeding wood duck, migrating shorebirds, bald eagles, and anadromous fish such as steelhead and chinook salmon.

O&M: The Service would use \$22,000 initially for fencing, posting, surveying, and general maintenance of refuge or tract boundaries, which the Service would fund from Refuge System base funding.

STONE LAKES NATIONAL WILDLIFE REFUGE

California

Acquisition Authority: Emergency Wetlands Resource Act of 1986, Fish and Wildlife Service Act of 1956

FY 2012 Budget Priority: No. 54 of 63

Location: Approximately 10 miles south of Sacramento, CA, the edge of the Sacramento-San Joaquin Delta

Congressional District: California, Districts 3, 5, and 10 **FWS Region 8**

Total LWCF Appropriations: \$1,100,000

FY 2012 Budget Request: \$500,000

Acquisition Status:

	<u>Ownerships</u>	<u>Acres</u>	<u>Cost</u>	<u>\$/Acre</u>
Acquired Fee through FY 2010	7	1,626	\$6,235,621	\$3,835
Acquired Easement through FY 2010	1	139	\$365,800	\$2,632
Acquired Exchange through FY 2010	0	0	\$0	\$0
Acquired Donation through FY 2010	5	4,433	\$0	\$0
Acquired Other means through FY 2010	0	0	\$0	\$0
Total Acquired through FY 2010	13	6,198	\$6,601,421	\$1,065
Planned FY 2011	1	110	\$750,000	\$6,818
Proposed FY 2012	3	112	\$500,000	\$4,451
Remaining	26	11,220	\$90,316,000	\$8,050
Totals	43	17,640	\$98,167,421	\$5,565

Purpose of Acquisition: To preserve and enhance habitat for resident wildlife and migratory birds, with special emphasis on plants and animals that are either listed or proposed for listing as Federal and state threatened or endangered species.

Project Cooperators: State of California, The Trust for Public Land, and Stone Lakes Refuge Association.

Project Description: Funds would acquire fee title to three tracts comprised of irrigated pasture, grassland, permanent wetland, and riparian habitats. The properties are a priority for the Service to acquire for the protection of Central Valley grasslands and wetland habitats that support migratory birds. An arm of South Stone Lake divides the property, providing a permanent water source and drainage. With additional management actions, the property's habitat types would provide high-value resources for endangered and special status species such as the giant garter snake and greater sandhill crane, as well as other migratory birds.

O&M: The Service anticipates no additional operations or maintenance costs associated with this acquisition as the tract is located within refuge boundaries and would add no additional workload.

UMBAGOG NATIONAL WILDLIFE REFUGE

New Hampshire, Maine

Acquisition Authority: Emergency Wetlands Resource Act of 1986

FY 2012 Budget Priority: No. 55 of 63

Location: On the New Hampshire/Maine border, 75 miles northwest of Portland, ME, and 30 miles north of Berlin, NH.

Congressional Districts: Maine, District 2 **FWS Region 5**
 New Hampshire, District 2

Total LWCF Appropriations: \$18,407,800

FY 2012 Budget Request: \$1,500,000

Acquisition Status:

	<u>Ownerships</u>	<u>Acres</u>	<u>Cost</u>	<u>\$/Acre</u>
Acquired Fee through FY 2010	59	24,106	\$21,875,073	\$907
Acquired Easement through FY 2010	1	6	\$5,000	\$833
Acquired Exchange through FY 2010	1	511	\$390,000	\$763
Acquired Donation through FY 2010	1	24	\$0	\$0
Acquired Other means through FY 2010	0	0	\$286,800	\$0
Total Acquired through FY 2010	62	24,647	\$22,556,873	\$915
Planned FY 2011	1	1,430	\$2,000,000	\$1,399
Proposed FY 2012	1	2,717	\$1,500,000	\$552
Remaining	206	45,918	\$48,943,127	\$1,066
Totals	270	74,712	\$75,000,000	\$1,004

Purpose of Acquisition: To protect fisheries and wildlife resources and provide public access to refuge lands.

Project Cooperators: The Trust for Public Land

Project Description: Funds would acquire fee title to 2,717 acres of forested, shrub, and bog-like wetlands dominated by spruce, fir, and alder, several beaver ponds with associated marsh and wet meadow, and cut-over forestland in various stages of regrowth. The Refuge focuses on one of the largest freshwater wetland complexes in New England. The extensive palustrine, lacustrine, and riverine wetlands that surround the lake and tributaries are recognized as some of the finest wildlife habitat in New Hampshire and Maine, and designated a priority North American Waterfowl Management Plan site. Wildlife values include waterfowl production and migration habitat, with a large amount of forested wetland important for black ducks and cavity nesters such as wood ducks, common goldeneye, and common and hooded mergansers. Ring-necked ducks, blue- and green-winged teal, and mallards also nest here. The Refuge also functions as a staging area during migration for scaup, scoters, Canada geese, and others. The first bald eagle nest in New Hampshire since 1949 is located here, and the area is noted for its high density of nesting ospreys.

O&M: The Service anticipates no additional costs associated with this acquisition as the parcel is located within refuge boundaries and would add no additional workload.

RAPPAHANNOCK RIVER VALLEY NATIONAL WILDLIFE REFUGE

Virginia

Acquisition Authority: Fish and Wildlife Act of 1956, Endangered Species Act of 1973, Emergency Wetlands Resource Act of 1986, Migratory Bird Conservation Act of 1929

FY 2012 Budget Priority: No. 56 of 63

Location: From Skinkers Neck to Belle Isle State Park on the Rappahannock River, VA

Congressional Districts: Virginia, District 1 **FWS Region 5**

Total LWCF Appropriations: \$10,666,000

FY 2012 Budget Request: \$335,000

Acquisition Status:

	<u>Ownerships</u>	<u>Acres*</u>	<u>Cost</u>	<u>\$/Acre</u>
Acquired Fee through FY 2010	20	5,593	\$12,546,843	\$2,243
Acquired Easement through FY 2010	7	1,918	\$4,277,027	\$2,230
Acquired Exchange through FY 2010	0	0	\$0	\$0
Acquired Donation through FY 2010	2	1,196	\$0	\$0
Acquired Other means through FY 2010	0	0	\$0	\$0
Total Acquired through FY 2010	29	8,707	\$16,823,870	\$1,932
Planned FY 2011	1	40	\$500,000	\$12,500
Proposed FY 2012	1	125	\$335,000	\$2,680
Remaining	21	11,128	\$35,532,000	\$3,193
Totals	52	20,000	\$53,190,870	\$2,660

Purpose of Acquisition: To provide nesting and roosting habitat for bald eagles, waterfowl, and other migratory birds by protecting forested bluffs above the river shore.

Project Cooperators: The Conservation Fund, The Trust for Public Land, Chesapeake Bay Foundation.

Project Description: Funds would acquire fee title to 125 acres of a parcel in the Fones Cliff area of the Rappahannock River. These forested bluffs reach heights of nearly 100 feet above the river shore and support high concentrations of bald eagles throughout the year. Surveys conducted by boat during winter months show the highest densities of eagles, ranging from 141 to 395 eagles along a 30-mile stretch, with Fones Cliff consistently supporting dozens of birds.

Many other migratory bird species use the forests, swamps, and steep ravines found on the property, including several Service or State species of conservation concern. They include the Louisiana waterthrush, ovenbird, prothonotary warbler, Kentucky warbler, worm-eating warbler, yellow-throated vireo, wood thrush, scarlet tanager, chuck-will’s widow, and whip-poor-will, all of which are confirmed breeders on the Refuge.

O&M: The Service estimates annual costs of \$1,000 for Service signage, boundary markings, and fencing, which the Service would fund from Refuge System base funding.

CRANE MEADOWS NATIONAL WILDLIFE REFUGE

Minnesota

Acquisition Authority: Fish and Wildlife Act of 1956; Emergency Wetlands Resources Act of 1986

FY 2012 Budget Priority: No. 57 of 63

Location: Morrison County, Minnesota

Congressional Districts: Minnesota, District 4 **FWS Region 3**

Total LWCF Appropriations: \$900,775

FY 2012 Budget Request: \$500,000

Acquisition Status:

	<u>Ownerships</u>	<u>Acres</u>	<u>Cost</u>	<u>\$/Acre</u>
Acquired Fee through FY 2010	16	1,695	\$1,195,965	\$706
Acquired Easement through FY 2010	0	0	\$0	\$0
Acquired Donation through FY 2010	3	108	\$0	\$0
Acquired Lease through FY 2010	0	0	\$0	\$0
Acquired Other means through FY 2010	0	0	\$0	\$0
Total Acquired Through FY 2010	19	1,803	\$1,195,965	\$663
Planned FY 2011	0	0	\$0	\$0
Proposed FY 2012	3	230	\$500,000	\$2,174
Remaining	87	11,507	\$593,035	\$52
Totals	109	13,540	\$2,289,000	\$169

Purpose of Acquisition: To protect, restore, and manage grassland and wetland habitat for migratory birds, including waterfowl, resident wildlife, and public recreation.

Project Cooperators: Friends of Crane Meadows National Wildlife Refuge, Great River Greening, Minnesota Department of Natural Resources, The Nature Conservancy, The Trust for Public Land, Pheasants Forever, Minnesota Deer Hunters Association, Morrison County Gobblers, Rice Sportsman Club, Royalton Sportsman Club, and the Anoka Sandplain Working Group.

Project Description: Funds would acquire approximately 230 fee acres from three landowners. If not acquired by the Service, this land may be sold for agricultural or residential development.

The Refuge is located in central Minnesota and preserves a large, natural wetland complex that includes Rice and Skunk Lakes, Platte and Skunk Rivers, Rice and Buckman Creeks, and many sedge meadow wetlands. The Refuge serves as an important stop for many species of migrating birds, and it harbors one of the largest nesting populations of greater sandhill cranes in Minnesota. Restored tallgrass prairie and oak savanna habitats host a wealth of songbirds as well as an array of wildflowers. Additionally, a wide variety of wildlife may be seen or heard in the sedge meadows, shallow lakes, and other wetland habitats.

O&M: The Service estimates \$25,000 for survey, posting, and reseeding with native local ecotype seed, which the Service would fund from Refuge base funding.

BEAR RIVER MIGRATORY BIRD REFUGE

Utah

Acquisition Authority: Fish and Wildlife Act of 1956

FY 2012 Budget Priority: No. 58 of 63

Location: About 55 miles north of Salt Lake City, at the north end of the Great Salt Lake

Congressional Districts: Utah, District 1 **FWS Region 6**

Total LWCF Appropriations: \$1,876,500 (Includes Inholding/Emergency funds)

FY 2012 Budget Request: \$1,400,000

Acquisition Status:

	<u>Ownerships</u>	<u>Acres</u>	<u>Cost*</u>	<u>\$/Acre</u>
Acquired Fee through FY 2010	16	18,596	\$7,381,553	\$397
Acquired Easement through FY 2010	4	46	\$500	\$11
Acquired Exchange through FY 2010**	1	8,010	\$1,637,752	\$204
Acquired Donation through FY 2010	2	4,285	\$0	\$0
Acquired Other means through FY 2010**	3	43,482	\$6,314	\$0
Total Acquired through FY 2010	26	74,419	\$9,026,119	\$121
Planned FY 2011	2	500	\$1,500,000	\$3,000
Proposed FY 2012	2	466	\$1,400,000	\$2,998
Remaining	Multi	30,185	\$87,394,384	\$2,895
Totals	Multi	105,570	\$99,320,503	\$941

*MBCF and incidental cost included.

** Cost figure is a result of the acquired tracts having a greater value than the divested tract.

***Includes condemnation cost and acres. Other acres are from Primary Withdrawal BLM.

Purpose of Acquisition: To protect migratory waterfowl habitat and delta wetlands. Migratory birds, waterfowl, and shorebirds, as well as resident wildlife, depend on the Refuge for feeding, breeding, and as a staging area. The Refuge serves a vital role in the Bear River delta ecosystem by protecting, developing and managing over 41,000 acres of wetlands.

Project Cooperators: Ducks Unlimited, Western Rivers Conservancy, and The Trust for Public Land.

Project Description: Funds would support the fee title acquisition of a 466-acre tract that totals approximately 1,841 acres. Acquisition of the property will be in phases. The property is an important part of the Refuge’s marshland ecosystem and this acquisition would ensure and enhance the long-term viability and health of the wildlife habitat. It features wetlands, marshland, grasslands, riparian areas, and grain fields that are important to shorebirds and migratory birds using the Central and Pacific flyways. Acquisition of this area would expand opportunities for wildlife-dependent forms of public recreation.

O&M: The Service estimates annual costs at \$1,500 for signage and a one-time fee of \$2,000 for boundary posting, both of which the Service would be funded from Refuge System base funding.

ARAPAHO NATIONAL WILDLIFE REFUGE
Colorado

Acquisition Authority: Migratory Bird Conservation Act, Fish and Wildlife Act of 1956

FY 2012 Budget Priority: No. 59 of 63

Location: Northern Colorado in Jackson County, south of the town of Walden

Congressional Districts: 3 **FWS Region 6**

Total LWCF Appropriations: \$140,000

FY 2012 Budget Request: \$500,000

Acquisition Status:

	<u>Ownerships</u>	<u>Acres</u>	<u>Cost*</u>	<u>\$/Acre</u>
Acquired Fee through FY 2010	15	18,234	\$4,973,645	\$272
Acquired Easement through FY 2010	0	3	0	0
Acquired Exchange through FY 2010	5	243	0	0
Acquired Donation through FY 2010	2	2,252	0	0
Acquired Other means through FY 2010**	1	4,793	0	0
Total Acquired through FY 2010	23	25,525	\$4,973,645	\$195
Planned FY 2011	0	0	0	0
Proposed FY 2012	1	700	\$500,000	\$714
Remaining	2	3,720	\$5,987,500	\$1,610
Totals	26	29,945	\$11,461,145	\$383

*MBCF and incidental cost included

** Other acres are from primary withdrawal

Purpose of Acquisition: To provide important feeding, staging, nesting and rearing habitat for migratory birds, and to protect and enhance the natural ecosystem, including wetlands, riparian areas, grasslands and sagebrush uplands.

Project Cooperators: The Trust for Public Land

Project Description: The Service would use funds to acquire a portion of a 3,487-acre ranch that is the largest inholding remaining within the refuge boundary. Once the ranch is acquired, less than 1,000 acres of inholdings within the refuge boundary will remain. The property consists of a mixture of irrigated hay meadows, riparian areas along the Illinois River, and dry pasture. This area provides quality habitat for neotropical migratory birds, waterfowl, fish, and many animals common to high-mountain, sagebrush environments. Moose, mule deer, elk, and pronghorn are all common in the area, as well as prairie dogs. More than 40 species of songbirds frequent the refuge during some part of their migration or nesting cycle. The wet meadow habitat found on this property is especially important as a feeding area for young sage grouse.

O&M: The Service anticipates no additional operations or maintenance costs associated with this acquisition. Acquisition of this tract would simplify management of the refuge as the parcel is bordered on 3 sides by other refuge land.

NECHES RIVER NATIONAL WILDLIFE REFUGE

Texas

Acquisition Authority: Fish and Wildlife Act of 1956, Emergency Wetlands Resources Act of 1986

FY 2012 Budget Priority: No. 60 of 63

Location: Approximately 35 miles south southeast of Tyler, Texas, 100 miles southeast of Dallas, Texas

Congressional Districts: Texas, Districts 2 and 8 **FWS Region 2**

Total LWCF Appropriations: \$0

FY 2012 Budget Request: \$11,000,000

Acquisition Status:

	<u>Ownerships</u>	<u>Acres</u>	<u>Cost</u>	<u>\$/Acre</u>
Acquired Fee through FY 2010	0	0	\$0	\$0
Acquired Easement through FY 2010	*1	1	\$0	\$0
Acquired Exchange through FY 2010	0	0	\$0	\$0
Acquired Donation through FY 2010	0	0	\$0	\$0
Acquired Other means through FY 2010	0	0	\$0	\$0
Total Acquired through FY 2010	1	1	\$0	\$0
Planned FY 2011	1	173	**\$302,600	\$1,749
Proposed FY 2012	1	6,688	\$11,000,000	\$1,645
Remaining	61	18,419	\$51,271,430	\$2,784
Totals	64	25,281	\$62,574,030	\$2,475

* This is a donation of one-acre conservation easement.

** This would be funded out of Inholding/Emergency LWCF funds.

Purpose of Acquisition: To protect bottomland hardwood and longleaf pine forests for their diverse biological values and wetlands functions, as well as to provide for compatible wildlife-dependent recreation opportunities in East Texas.

Project Cooperators: The Conservation Fund, The Trust for Public Land, and The Nature Conservancy.

Project Description: Funding this 6,688-acre fee title acquisition would protect pristine bottomland hardwood and longleaf pine forests with diverse biological values. These forests have long been identified as one of the South’s last best intact ecosystems. A recent shift to short-term investment-oriented timber ownership has created detrimental implications for forest conservation. Working closely with our federal, state and local partners within this unique area of Texas, the acquisition of this premier parcel will provide protection of large landscapes threatened by encroaching development. If the land is acquired by developers, the ensuing fragmentation of the forest would not be compatible with wildlife protection. As an added benefit to the Neches River area, improvement in water quality and flood control would provide for compatible wildlife-dependent recreation opportunities such as hunting, fishing, hiking, bird and wildlife watching and outdoor education. The bottomland floodplain forests on the proposed acquisition area protect a large number of wildlife and plant species. These include the federally endangered Louisiana Black Bear and Interior Least Tern, along with eight threatened species (Arctic peregrine falcon, wood stork, American swallow-tailed kite, bald eagle, paddlefish, Rafinesque’s big-eared bat, alligator snapping turtle, and timber rattlesnake).

O&M: The Service estimates an initial cost of \$191,000 for start-up at the Refuge for fencing, posting and restoration of bottomland hardwood timber. The Service would fund the start-up expenses from Refuge System base funding.

**BAYOU TECHE NATIONAL WILDLIFE REFUGE
Louisiana**

Acquisition Authority: Endangered Species Act of 1973

FY 2012 Budget Priority: No. 61 of 63

Location: South edge of Franklin, LA, which is approximately 55 miles from Lafayette, LA, and 108 miles from New Orleans, LA

Congressional Districts: Louisiana, District 7 **FWS Region 4**

Total LWCF Appropriations: \$2,234,000

FY 2012 Budget Request: \$500,000

Acquisition Status:

	<u>Ownerships</u>	<u>Acres</u>	<u>Cost</u>	<u>\$/Acre</u>
Acquired Fee through FY 2010	1	9,074	\$2,234,000	\$246
Acquired Easement through FY 2010	0	0	\$0	\$0
Acquired Exchange through FY 2010	0	0	\$0	\$0
Acquired Donation through FY 2010	0	0	\$0	\$0
Acquired Other means through FY 2010	0	0	\$0	\$0
Total Acquired through FY 2010	1	9,074	\$2,234,000	\$246
Planned FY 2011	0	0	\$0	\$0
Proposed FY 2012	1	415	\$500,000	\$1,205
Remaining	13	26,910	\$32,426,550	\$1,205
Totals	15	36,399	\$35,160,550	\$966

Purpose of Acquisition: To preserve wintering habitat for mallards, pintails, and wood ducks, and to contribute to the goals of the Lower Mississippi River Valley Ecosystem, the North American Waterfowl Management Plan, and the Red-cockaded Woodpecker Recovery Plan.

Project Cooperators: The Trust for Public Land

Project Description: Funding would acquire fee title to 415 acres of an approximately 7,000-acre ownership. This would be a phased acquisition as funding becomes available. Acquisition of this property would improve habitat for the threatened Louisiana black bear, provide quality migratory bird habitat, and allow compatible public use such as nature trails, recreational boating, fishing, hunting, and wildlife observation. Other wildlife species of interest include wading birds, ducks, and bald eagles. The Refuge is forested with bottomland hardwoods and cypress-gum forest.

O&M: The Service anticipates no additional operation and maintenance costs associated with this acquisition as the parcel is located within refuge boundaries and would add no additional workload.

TURNBULL NATIONAL WILDLIFE REFUGE
Washington

Acquisition Authority: Fish and Wildlife Act of 1956

FY 2012 Budget Priority: No. 62 of 63

Location: Approximately 20 miles southwest of Spokane, WA, on the eastern edge of the Columbia Basin in eastern Washington

Congressional District: Washington, District 5 **FWS Region 1**

Total LWCF Appropriations: \$1,500,000

FY 2012 Budget Request: \$500,000

Acquisition Status:

	<u>Ownerships</u>	<u>Acres**</u>	<u>Cost</u>	<u>\$/Acre</u>
Acquired Fee through FY 2010	69	18,785	\$2,796,880	\$149
Acquired Easement through FY 2010	1	45*	\$0	\$0
Acquired Exchange through FY 2010	0	0	\$0	\$0
Acquired Donation through FY 2010	0	0	\$0	\$0
Acquired Other means through FY 2010	13	2,076	\$0	\$0
Total Acquired through FY 2010	83	20,861	\$2,796,880	\$134
Planned FY 2011	3	744	\$1,640,000	\$2,204
Proposed FY 2012	2	250	\$500,000	\$2,000
Remaining	18	13,269	\$40,057,000	\$3,019
Totals	106	35,124	\$44,993,880	\$1,281

*Included in total acres.

**Includes 15,409 acres acquired with \$943,853 MBCF funds.

Purpose of Acquisition: To protect water quality and quantity for wildlife habitat and migratory birds; to protect a critically endangered ecosystem (Palouse steppe); to provide protection for threatened and proposed species and other species in decline over the Interior Columbia Basin; and to protect the core of the Refuge from rapid development pressures.

Project Cooperators: The Nature Conservancy, Inland Northwest Land Trust, and Ducks Unlimited.

Project Description: Funds would acquire fee title to four parcels totaling 250 acres with some upland and some lowland lakefront within the 44,388-acre Stewardship Area. Acquisition of these properties would provide protection of water quality and quantity, intact wetlands, ponderosa pine and aspen; provide further protection for species in decline; and assist in the recovery of federally listed species including *Howellia aquatilis* and *Silene spaldingii*. Other threats include encroaching urban/suburban/exurban development from nearby Cheney and Spokane, excessive groundwater withdrawals, timber harvesting, and ranching practices.

O&M: The Service would use \$15,000 initially for fencing, removing old fencing, installing gates, and posting of refuge boundaries, which the Service would fund from Refuge System base funding.

Standard Form 300			
DEPARTMENT OF THE INTERIOR FISH AND WILDLIFE SERVICE LAND ACQUISITION			
Program and Financing (in millions of dollars)			
Identification code 14-5020-0-2-302	2010 Actual	2011 CR	2012 Estimate
Obligations by program activity:			
Direct program:			
0001 Acquisition management	10	10	17
0002 Emergencies and hardships	2	2	2
0003 Exchanges	2	2	2
0004 Inholdings	3	3	3
0005 CAM	2	2	2
0006 Federal refuges (refuge land payments)	46	68	94
0100 Total, direct program	65	87	120
1000 Total new obligations	65	87	120
Budgetary resources available for obligation:			
2140 Unobligated balance carried forward, start of year	20	41	40
2200 New budget authority (gross)	86	86	140
2390 Total budgetary resources available for obligation	106	127	180
2395 Total new obligations (-)	-65	-87	-120
2440 Unobligated balance carried forward, end of year	41	40	60
New budget authority (gross), detail:			
Discretionary:			
4020 Appropriation (special fund)	86	86	140
4300 Appropriation (total)	86	86	140
7000 Total new budget authority (gross)	86	86	140
Program and Financing (in millions of dollars)			
Identification code 14-5020-0-2-302	2010 Actual	2011 CR	2012 Estimate
Change in obligated balances:			
7240 Obligated balance, start of year	30	31	34
7310 Total new obligations	65	87	120
7320 Total outlays, gross (-)	-64	-84	-120
7440 Obligated balance, end of year	31	34	34
Outlays, (gross) detail:			
8690 Outlays from new discretionary authority	46	52	84
8693 Outlays from discretionary balances	18	32	36
8700 Total outlays (gross)	64	84	120
Net budget authority and outlays:			
8900 Budget authority	86	86	140
9000 Outlays (net)	64	84	120

Object classification (in millions of dollars)			
Identification code 14-5020-0-2-302	2010 Actual	2011 CR	2012 Estimate
Direct obligations:			
Personnel compensation:			
1111 Full-time permanent	6	6	9
1210 Civilian personnel benefits	2	2	2
231 Rental payments to GSA	1	1	1
252 Other services	3	5	7
253 Purchases of goods and services from Government accounts	1	1	2
310 Equipment	1		
320 Land and structures	50	72	99
990 Subtotal, direct obligations	64	87	120
*Personnel Summary			
Identification code 14-5020-0-2-302	2010 Actual	2011 CR	2012 Estimate
Direct:			
Total compensable workyears:			
1001 Full-time equivalent employment	77	77	107

This page left intentionally blank.