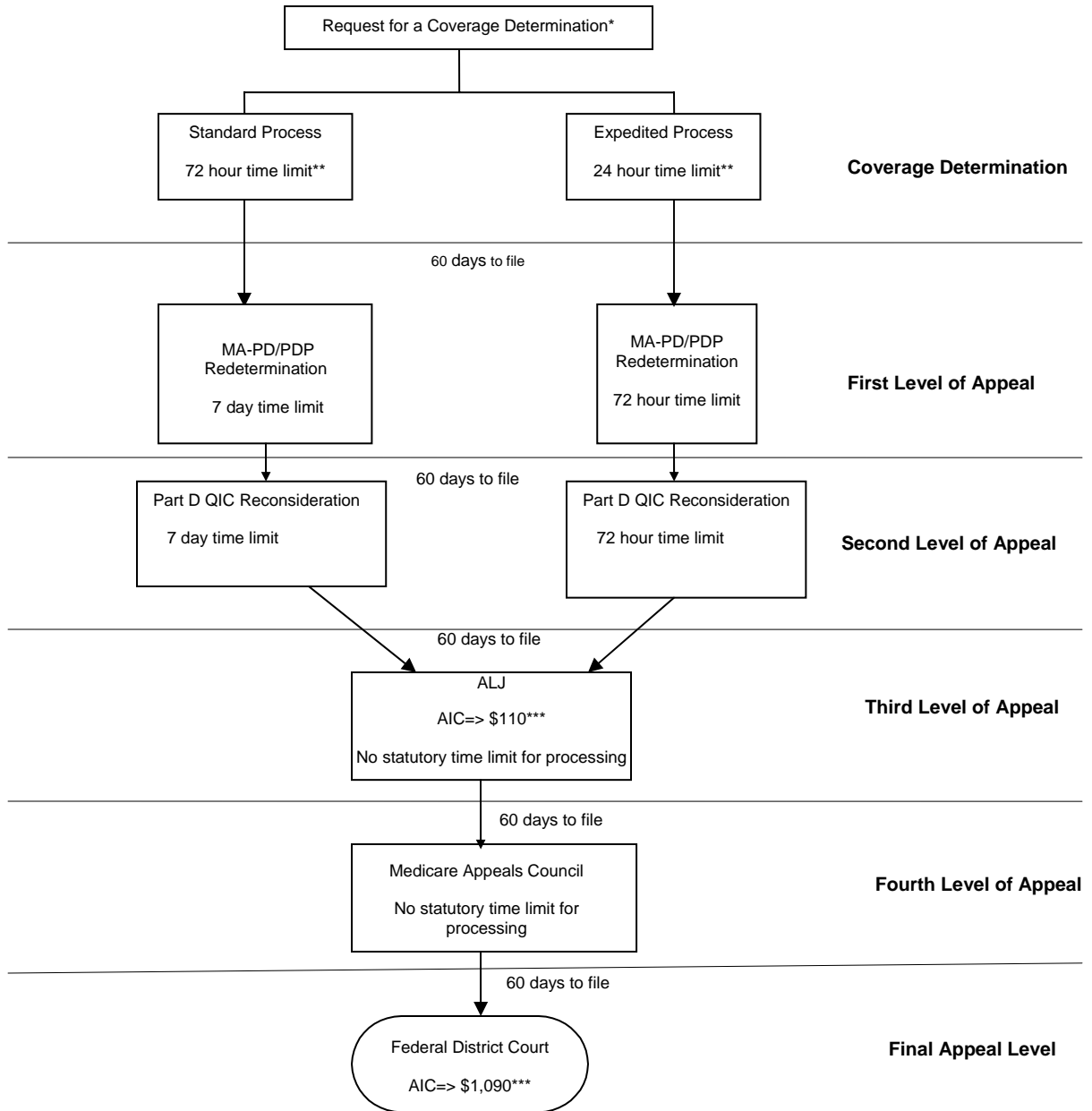


## Medicare Part D Appeals Process



AIC = Amount in controversy  
 ALJ = Administrative Law Judge  
 IRE = Independent Review Entity  
 MA-PD = Medicare Advantage plan that offers Part D benefits  
 PDP = Prescription Drug Plan

\*A request for a coverage determination includes a request for a tiering exception or a formulary exception. A request for a coverage determination may be filed by the enrollee, the enrollee's appointed representative, or the enrollee's physician.

\*\*The adjudication timeframes generally begin when the request is received by the plan sponsor. However, if the request involves an exception request, the adjudication timeframe begins when the plan sponsor receives the physician's supporting statement.

\*\*\*Starting in 2005, the AIC requirement for an ALJ hearing and Federal District Court will be adjusted in accordance with the medical care component of the consumer price index.