

LIST OF MATERIAL

TYPE/LEVEL	QTY REQ'D	ITEM NO.	NAME/DESCRIPTION	NOTE NO.	DRAWING NUMBER OR PART ID. NUMBER	MATERIAL SPECIFICATION	
						MATERIAL	STD/NUMBER
ASM	1	1	SHIELDED CONTAINER ASSEMBLY		165-F-026-W1	-	-
PRT	1	2	BASE		165-F-026-W5	CS	SEE NOTE 2
PRT	1	3	OUTER SHELL		165-F-026-W5	CS	SEE NOTE 4
PRT	1	4	INNER SHELL		165-F-026-W5	CS	SEE NOTE 4
PRT	1	5	FLANGE		165-F-026-W5	CS	SEE NOTE 2
PRT	1	6	LID		165-F-026-W2	CS	SEE NOTE 2
PRT	1	7	SEAL	B	165-F-026-W3	SEE NOTE 3	SEE NOTE 3
PRT	1	8	LEAD SHIELD		165-F-026-W1	LEAD	ASTM B29
PRT	1	9	FILTER SHIELD PLUG		165-F-026-W2	LEAD	ASTM B29
PRT	1	10	FILTER SHIELD CAP		165-F-026-W2	CS	SEE NOTE 4
PRT	3	11	PLUG		165-F-026-W3	CS	SEE NOTE 4
PRT	2	12	SLOTTED SPRING PIN, (Ø3/8 X 1-1/4 LG.)	A	98296A948	CS	ASME B18.8.2
PRT	1	13	SOCKET SET SCREW, Ø1/2-13UNC X 1 LG.	A	91385A712	BLK AS	ASTM F912
PRT	3	14	EYEBOLT, 1/2-13UNC-2A X 1-1/2 LG.	A	3049T82	AS	ASTM F541
PRT	3	15	HEAVY HEX NUT, 1/2-13UNC-2B	A	95462A033	ZINC-PLTD	GR 5
PRT	1	16	PROTECTIVE PLUG, 3/4 PIPE PRESS-FIT	A	4491K47	LDPE	-
PRT	15	17	FLANGE HEX HD CAP SCREW, 1/2-13UNC X 1-1/2 LG	A	92316A714	BLK AS	SAE J429, GR 8

NOMINAL ASSEMBLY WEIGHT: 1726 LB.

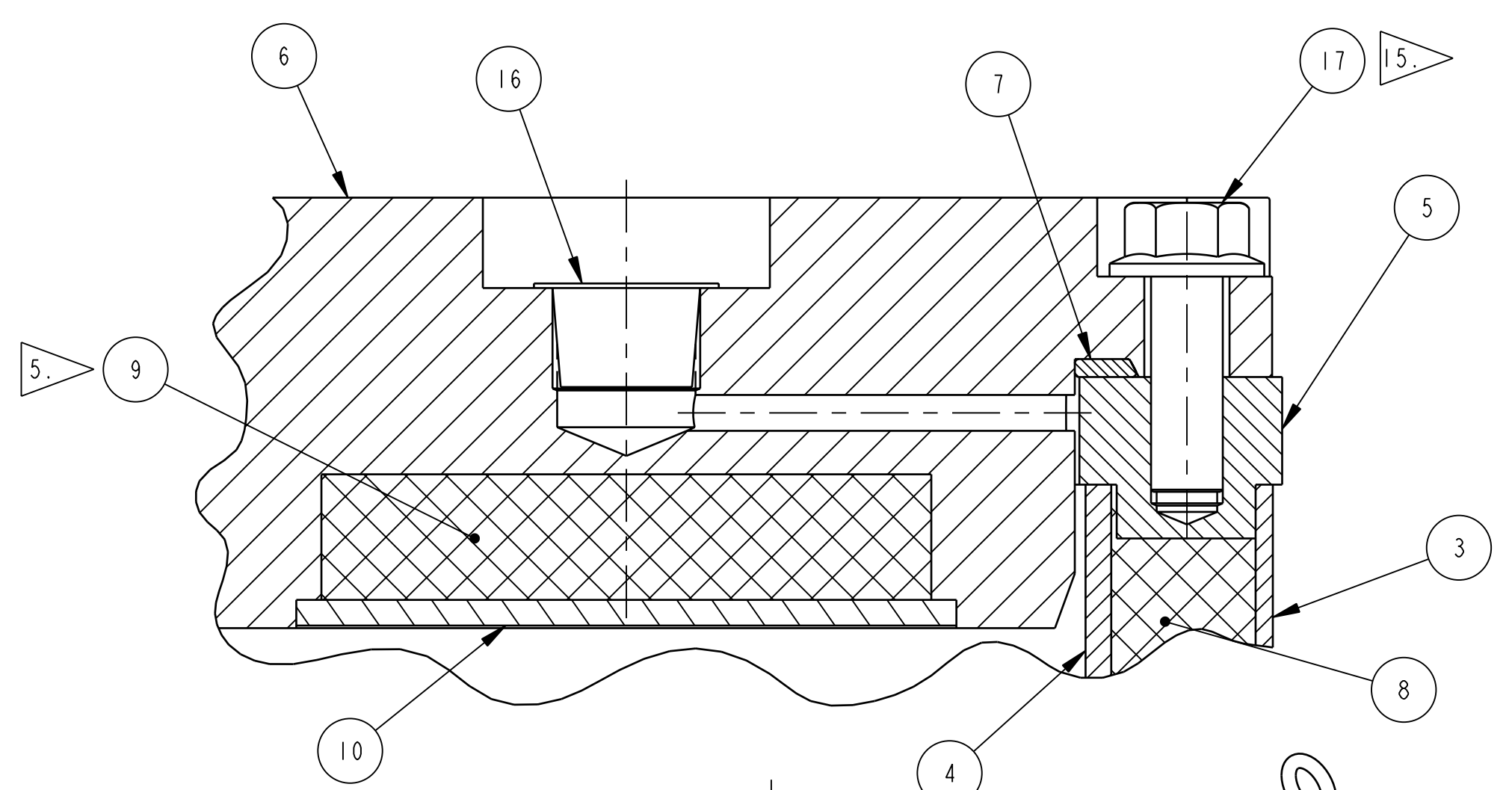
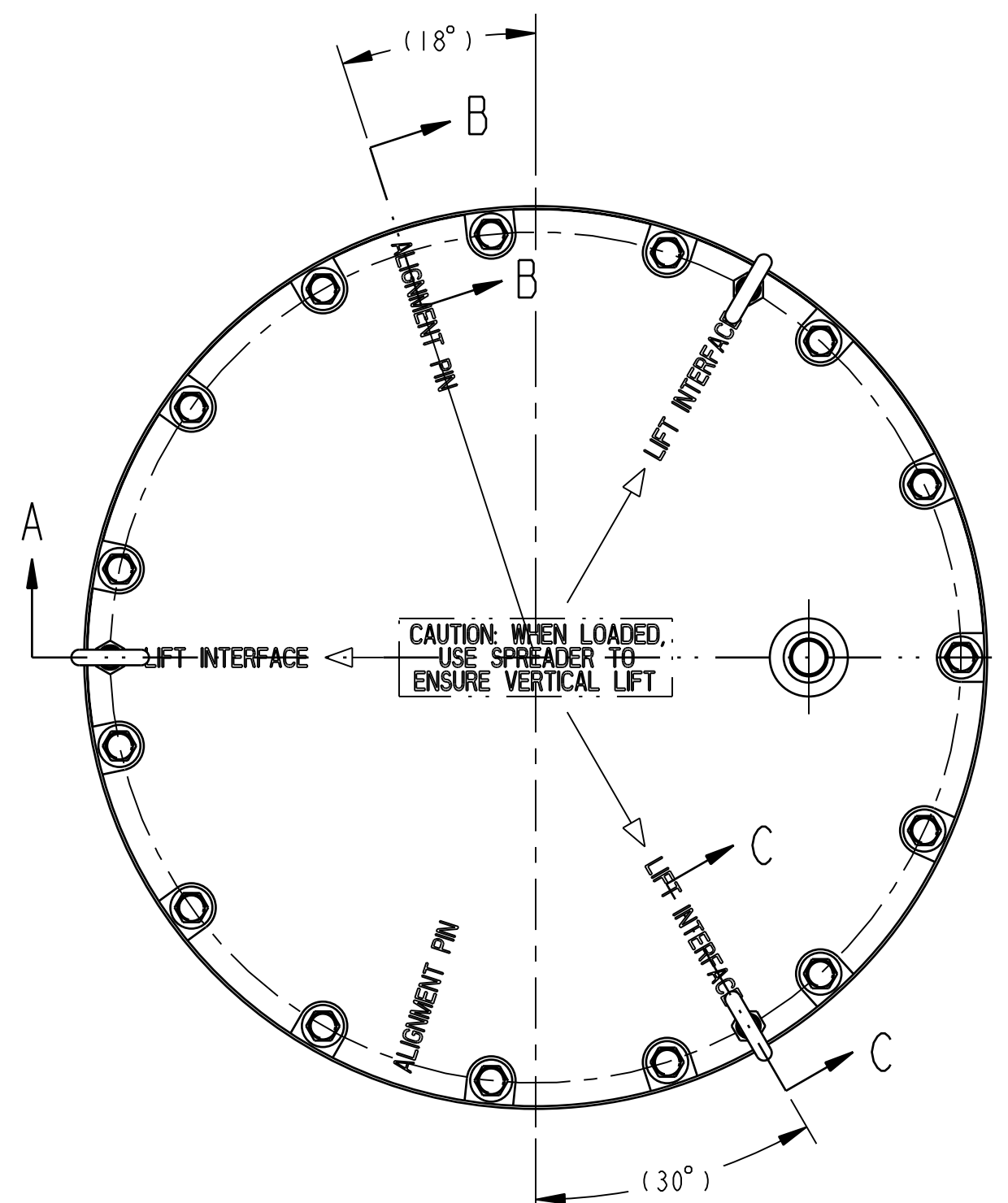
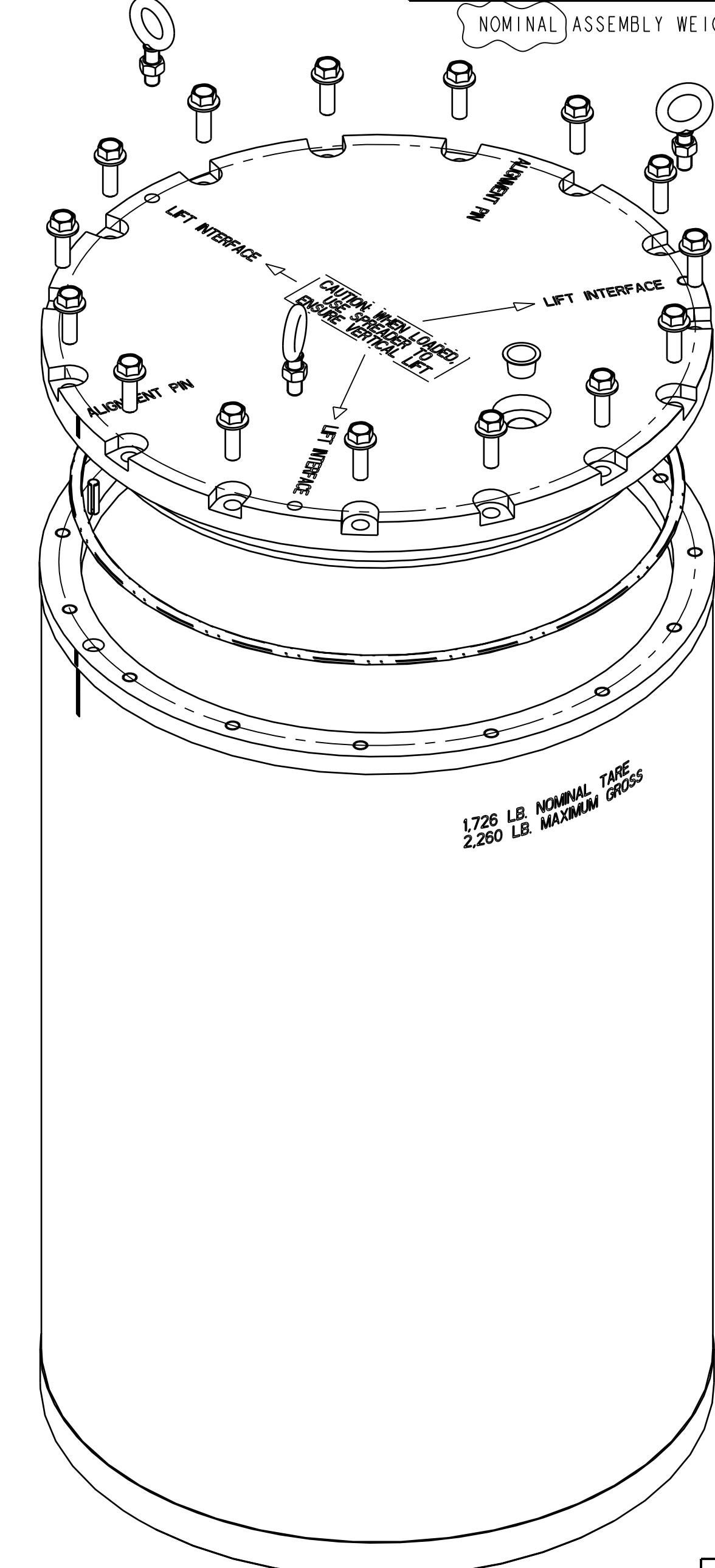
SUPPLIERS

- A. McMASTER CARR OR APPROVED EQUIVALENT
- B. IPOTEC INC. OR APPROVED EQUIVALENT

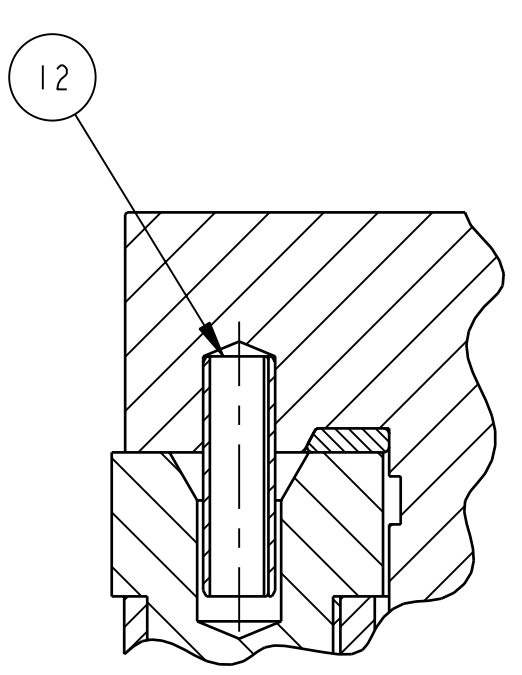
NOTES

CONTINUES ON SHT. 2

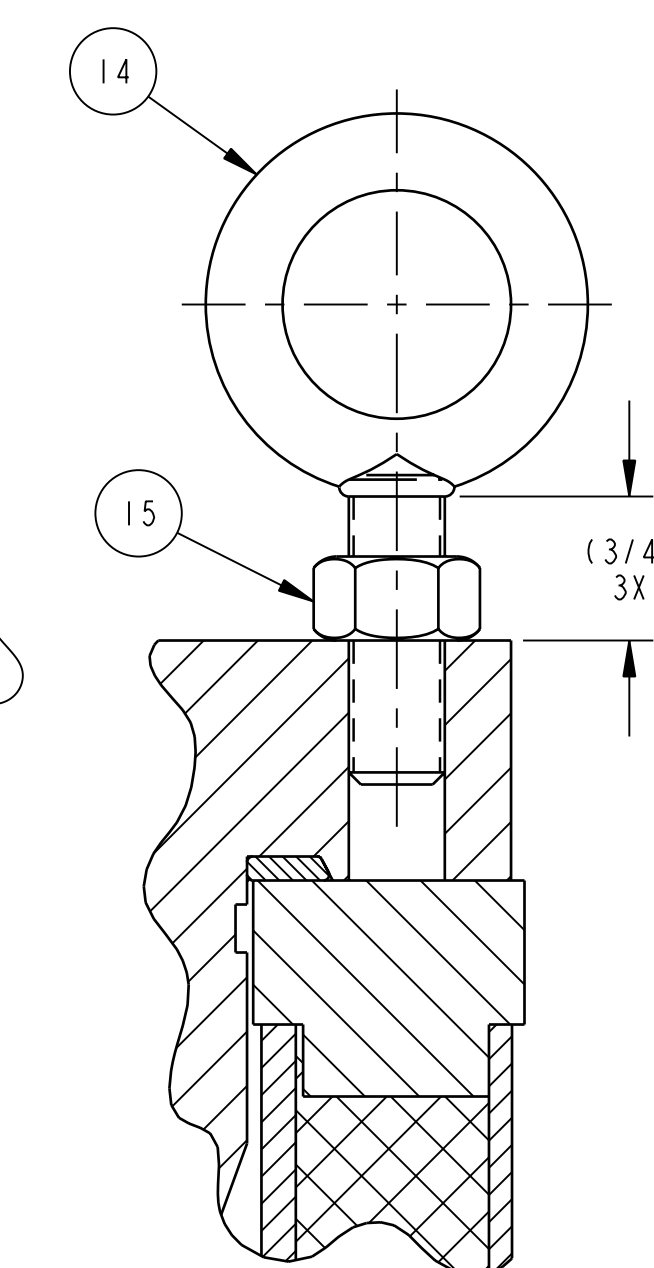
- BREAK OR DEBURR ALL SHARP EDGES TO .015 MIN.
- MATERIAL: ASTM A516, GR 70 (PLATE) NORMALIZED TO FINE GRAIN PRACTICE OR ASTM A266, GR 2 (FORGING) NORMALIZED TO FINE GRAIN PRACTICE.
- MATERIAL: SILICONE SPONGE, SILICONE ADHESIVE ONE SIDE, CLOSED-CELL, MEDIUM-SOFT (SS20).
- MATERIAL: ASTM A1011, GR 45, SS (STRUCTURAL STEEL) OR ASTM A36.
- INSTALL USING A CLASS FN2 FORCE FIT PER ANSI B4.1. OR OPTIONALLY, LEAD WOOL MAY BE USED AS REQUIRED FOR TIGHT FIT.
- RECOMMENDED FOR LIFTING: UTILIZE A 1/2 HEAVY-DUTY SAFETY HOIST RING, McMASTER CARR, P/N 3052187 OR ENGINEER APPROVED EQUAL.
- BODY ASSEMBLY INVERTED FOR LEAD POUR CONFIGURATION.
- FINAL MACHINED DIMENSIONS IMPLIED ON BODY, (POST-LEAD POUR).
- AFTER LEAD POUR, CUT RISERS OFF BASE, FLUSH.
- STENCIL AFTER PAINTING WITH 1/4 IN. MIN HIGH CONTRASTING CHARACTERS: (WHERE SHOWN)
 - ALIGNMENT PIN MARKS (AS SHOWN)
 - "CAUTION: WHEN LOADED, USE SPREADER TO ENSURE VERTICAL LIFT"
 - "ALIGNMENT PIN" (2X)
 - "LIFT INTERFACE" (3X)
 - "1,726 LB. NOMINAL TARE
2,260 LB. MAXIMUM GROSS" (AS SHOWN)
- UP TO 1/32 WELD REINFORCEMENT ALLOWED.
- BLAST AND PAINT/COAT ALL EXPOSED EXTERIOR SURFACES, EXCLUDING INTERFACING/THEADED HOLES AND ASSOCIATED COUNTERBORES.
- MACHINED FROM 1 IN. THK LEAD PLATE.
- FABRICATION OPTION: LID AND BODY MAY BE MATCH DRILLED AND SERIALIZED TO DEFAULT DRAWING TOLERANCES IN LIEU OF POSITIONAL GEOMETRIC TOLERANCES.



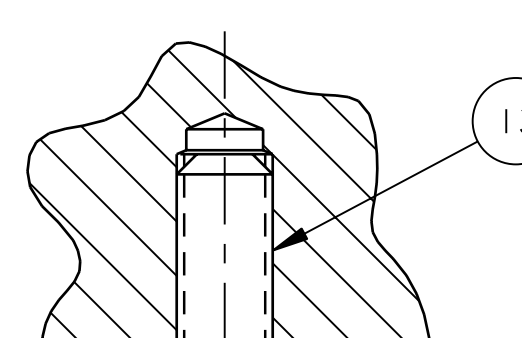
DETAIL 1
SCALE 1:1



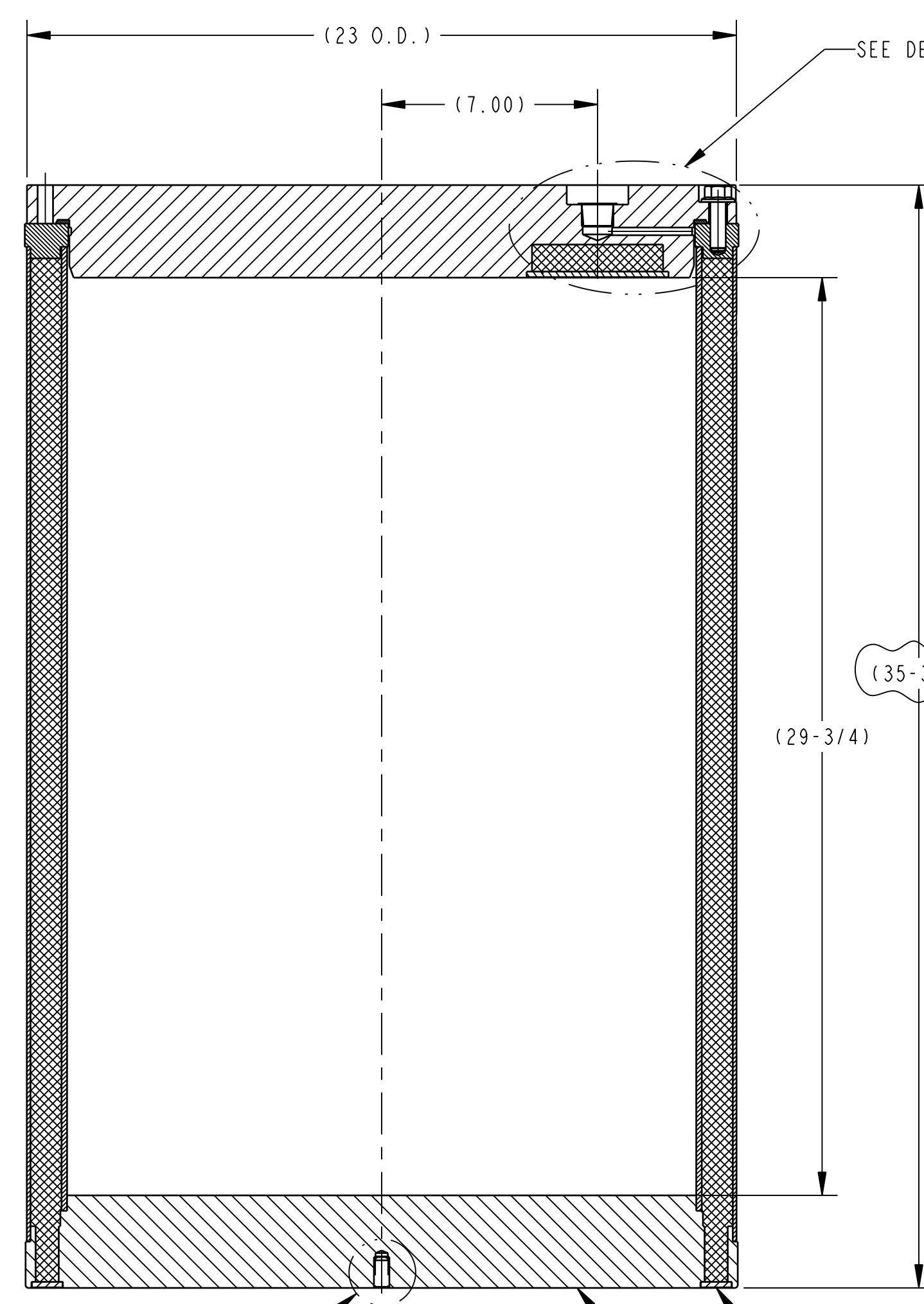
SECTION B-B
SCALE 1:1



SECTION C-C
SCALE 1:1



DETAIL 2
SCALE 1:1



SECTION A-A

1 SHIELDED CONTAINER ASSEMBLY (EYEBOLTS REMOVED FOR CLARITY)

RELEASE AUTHORIZATION
PROTOTYPE FABRICATION ONLY

REFERENCE VIEW

INDEX CODE NUMBER				
SYSTEM	WBE	DWG TYPE	CL	VENDOR
PT03	165	01300	44	240

DIM. IN INCHES U.N.O.	SFTY: N/A
[] DENOTES mm U.N.O.	APPD: N/A
UNLESS OTHERWISE SPECIFIED TOLERANCES	DM: BOB BEEMAN 8/13/07
2 PL DEC 3 PL DEC ANGLES 125	DOE: N/A
±.03 ±.010 ±.5°	CAD SOURCE
FRACTIONS: ±1/16	PRO/ENGINEER

REV	ISSUE DESCRIPTION	DFTR	CHKR	COG	DFTG MGR	ECO	PWR
A	REVISED PER ADD. #1	JMN	BAD	TD	BB	11834	N/A
		9/13/07	9/14/07	9/14/07	9/14/07		

THIS DRAWING CREATED BY ENGINEERING CHANGE ORDER (ECO): 11834 PWR: N/A

DFTR: J.M. NEVAREZ 7/18/07
CHKR: B. DAY FOR RAJ 8/9/07
COG: ANTHONY DONNER 8/9/07
CM: TODD SELLMER 8/13/07
QA: BRUCE G. FAULK 8/13/07

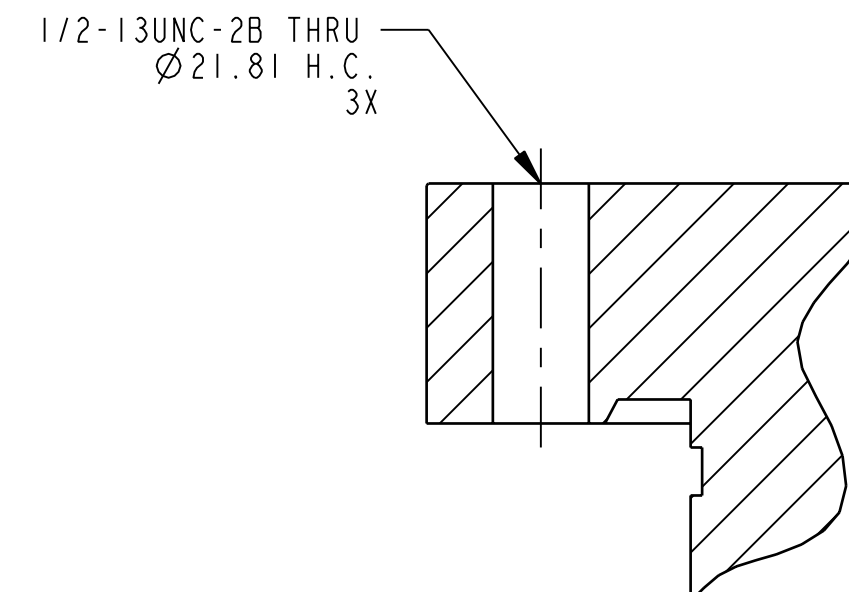
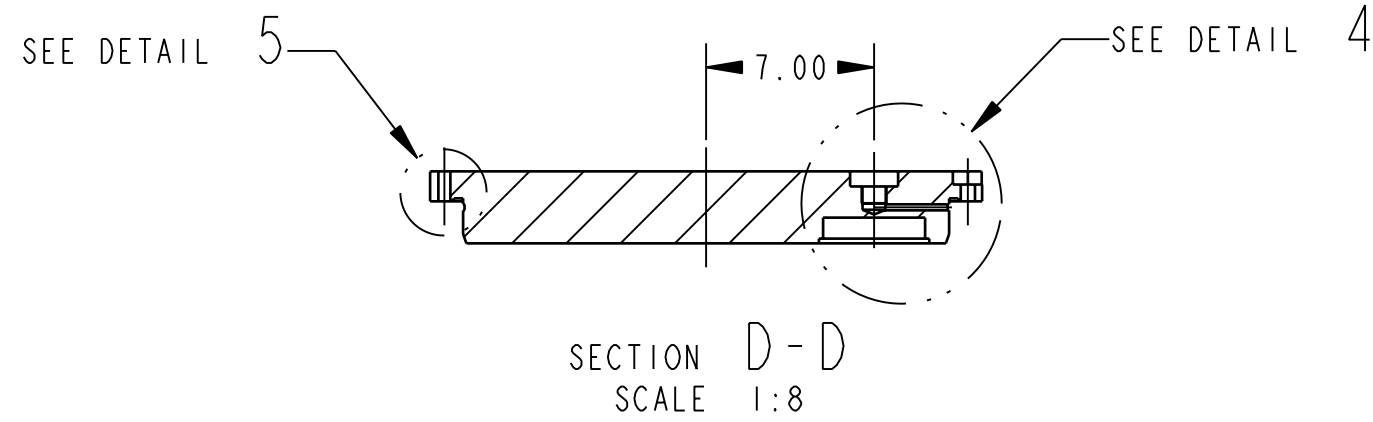
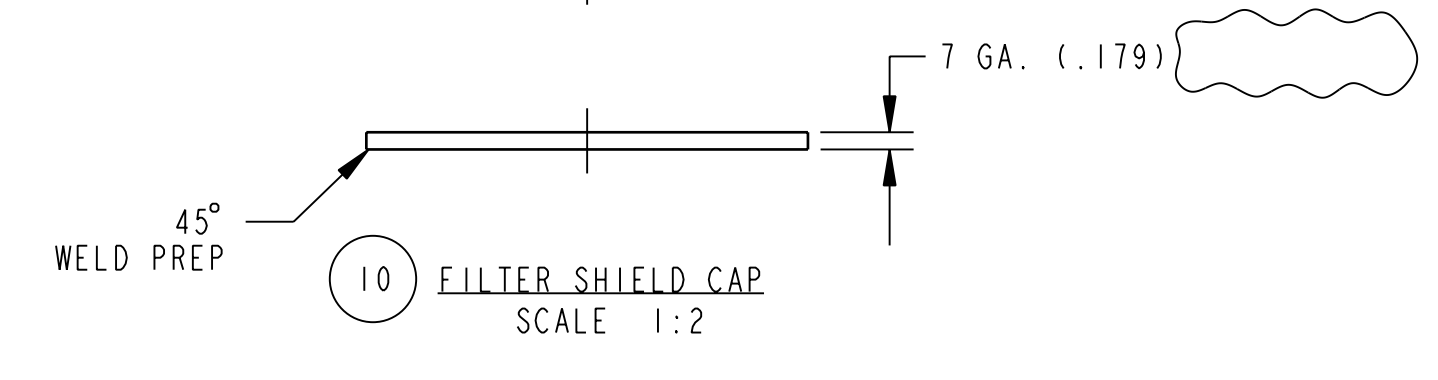
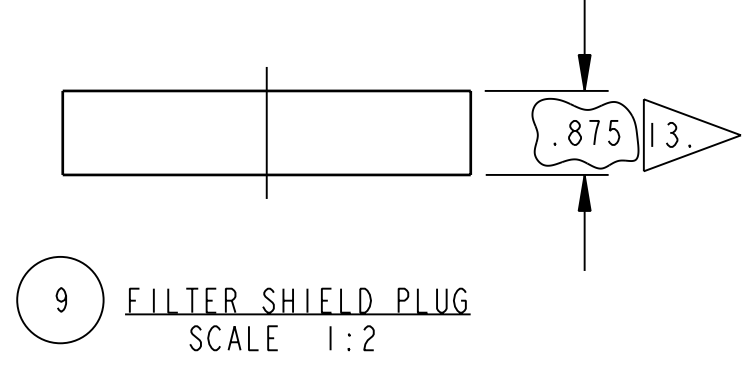
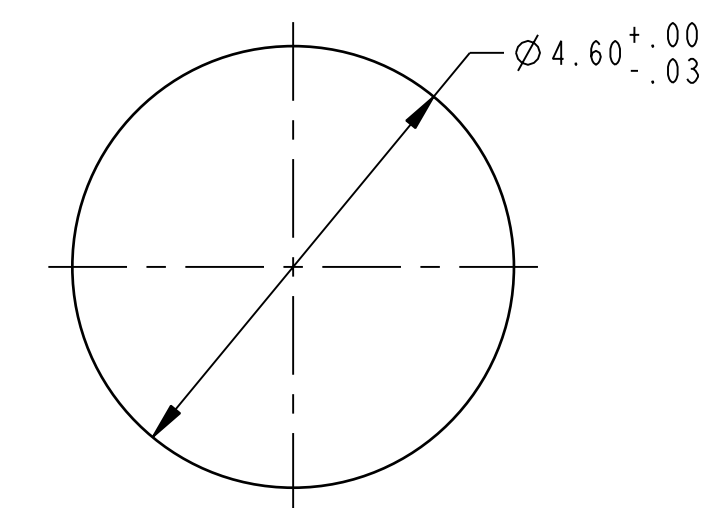
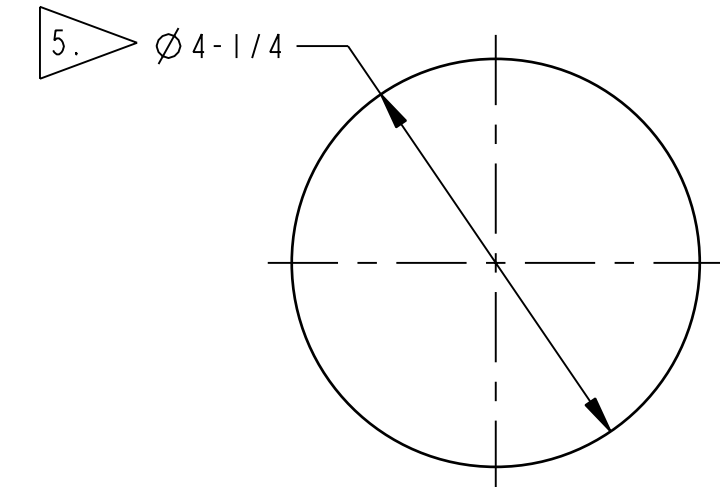
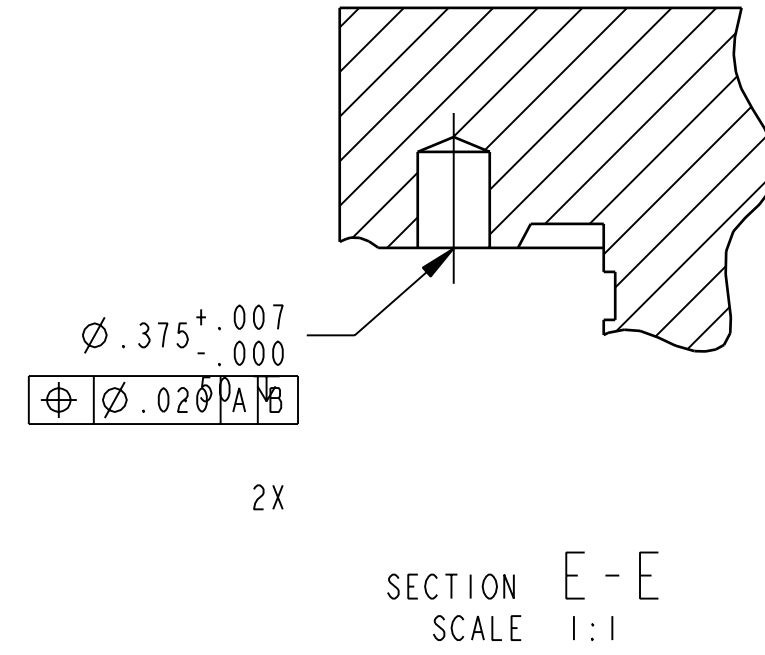
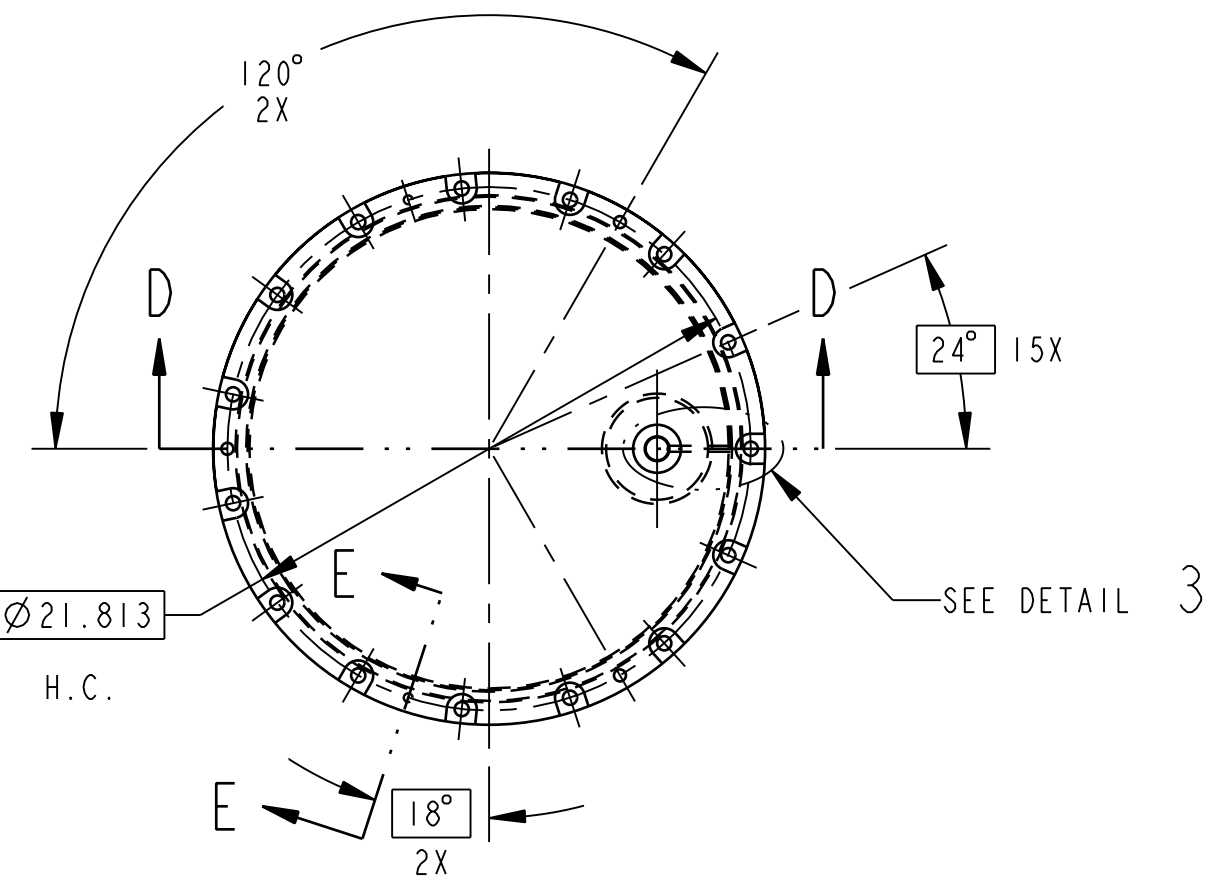
U.S. DEPARTMENT OF ENERGY



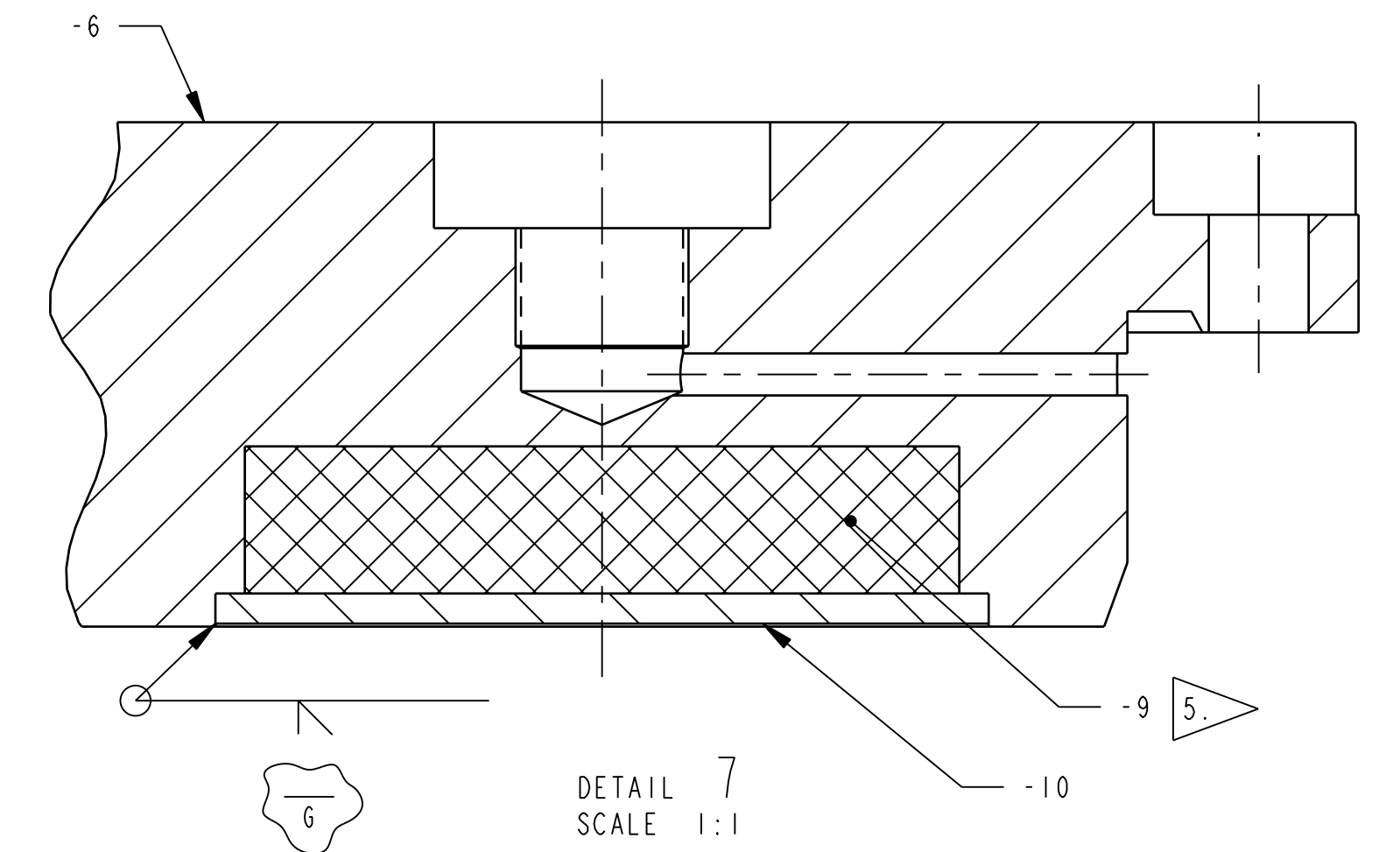
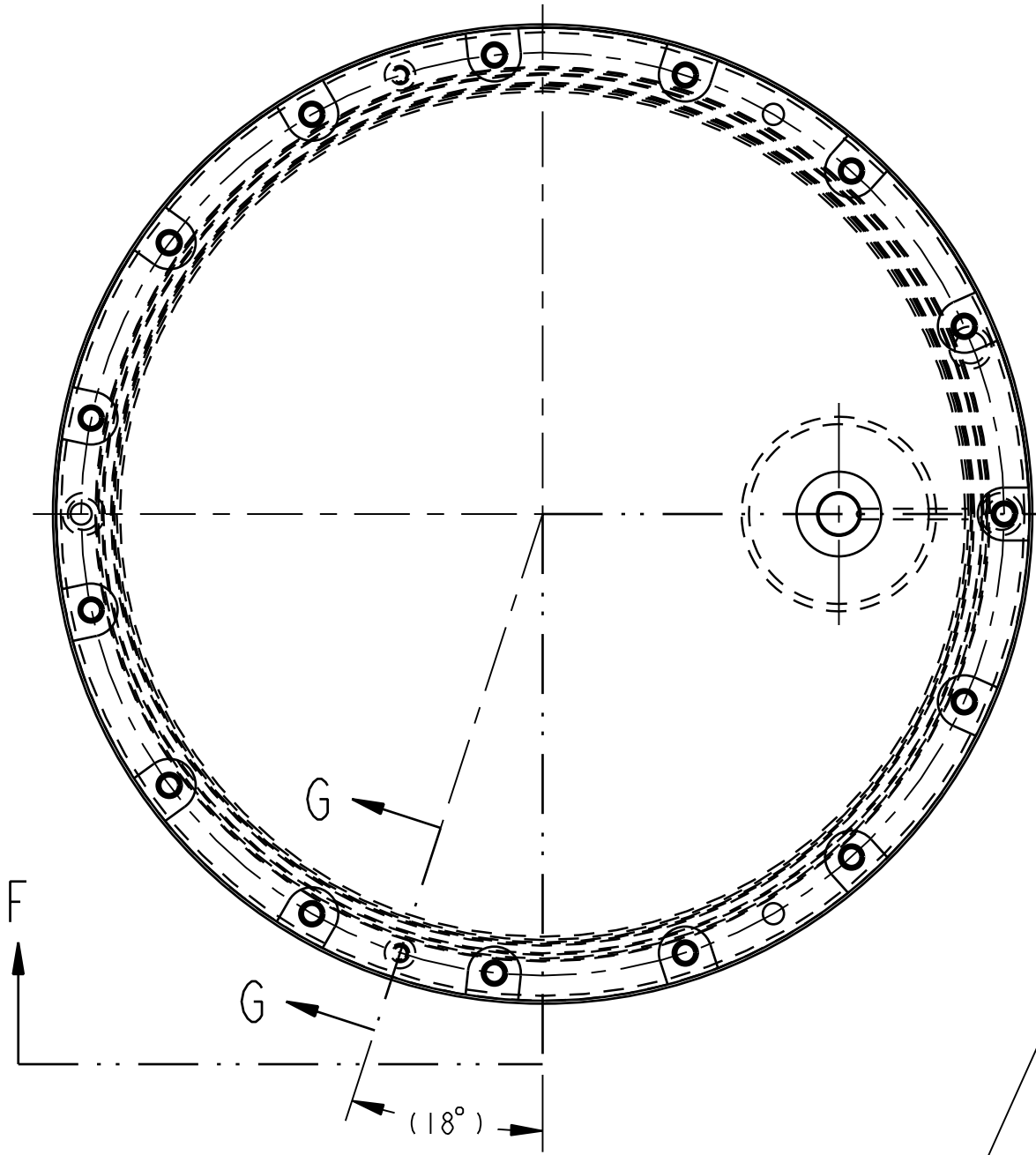
Waste Isolation Pilot Plant Corlsbed, NM

SHIELDED CONTAINER ASSEMBLY

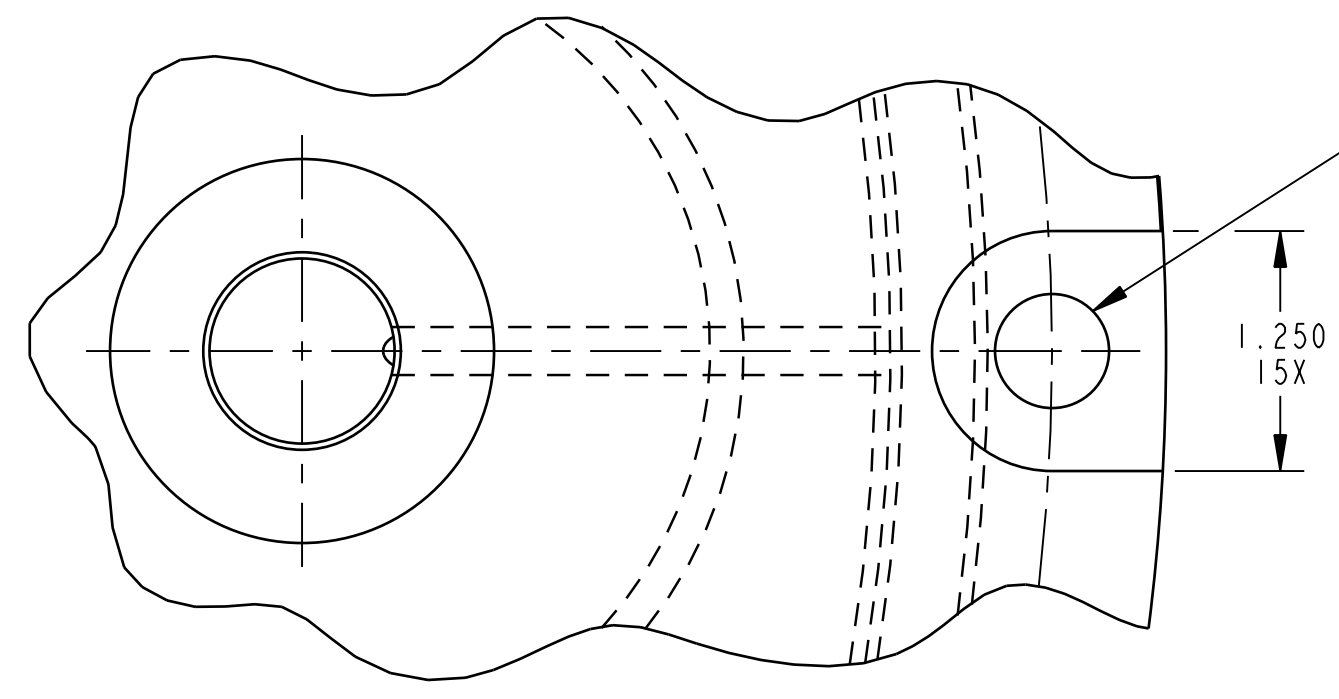
SIZE	SYS	DWG NO	REV
D	PT03	165-F-026-W1	A
SCALE:	1:4	INTERPRET DWG PER ANSI Y14	
THIS DRAWING TAKEN FROM: N/A		VENDOR: N/A	



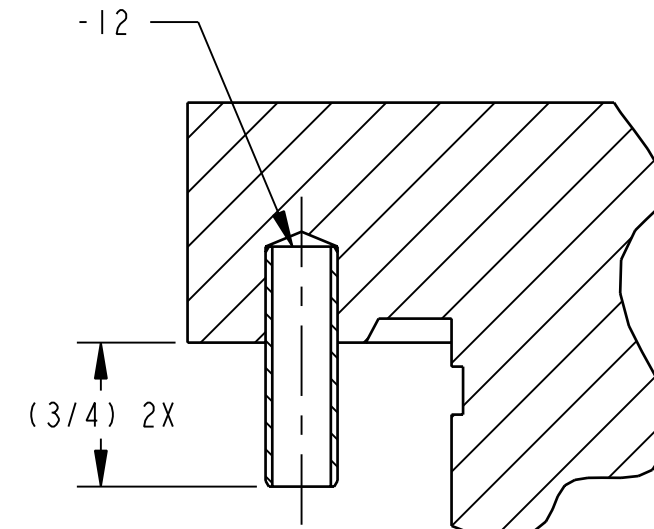
DETAIL 5 SCALE 1:1



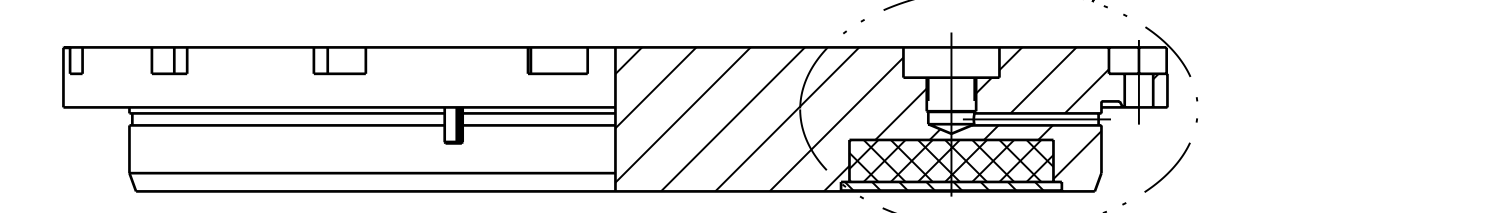
DETAIL 7 SCALE 1:1



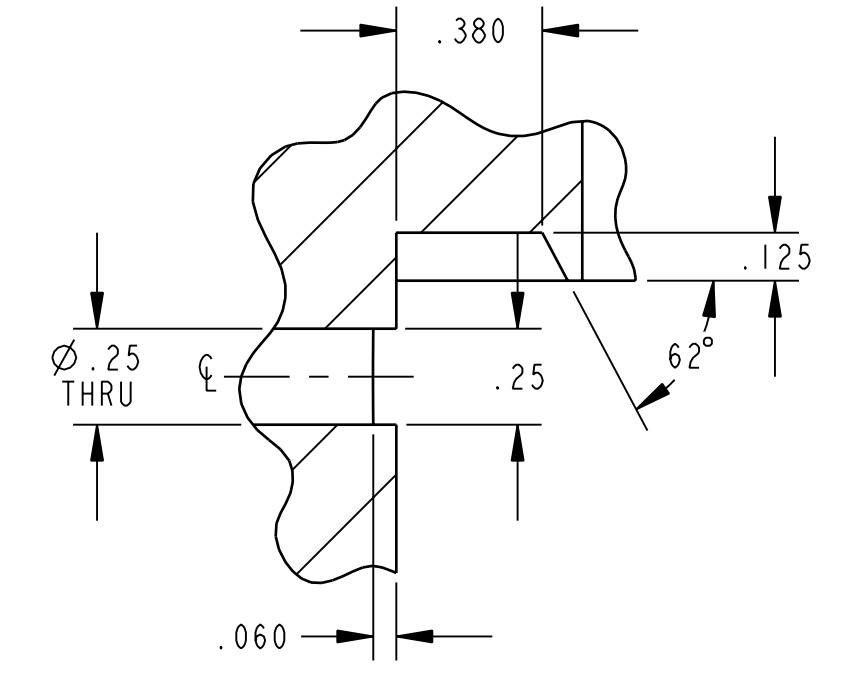
Ø .594 THRU
Ø 1.250
▽ .550
Ø .020 A B
15X



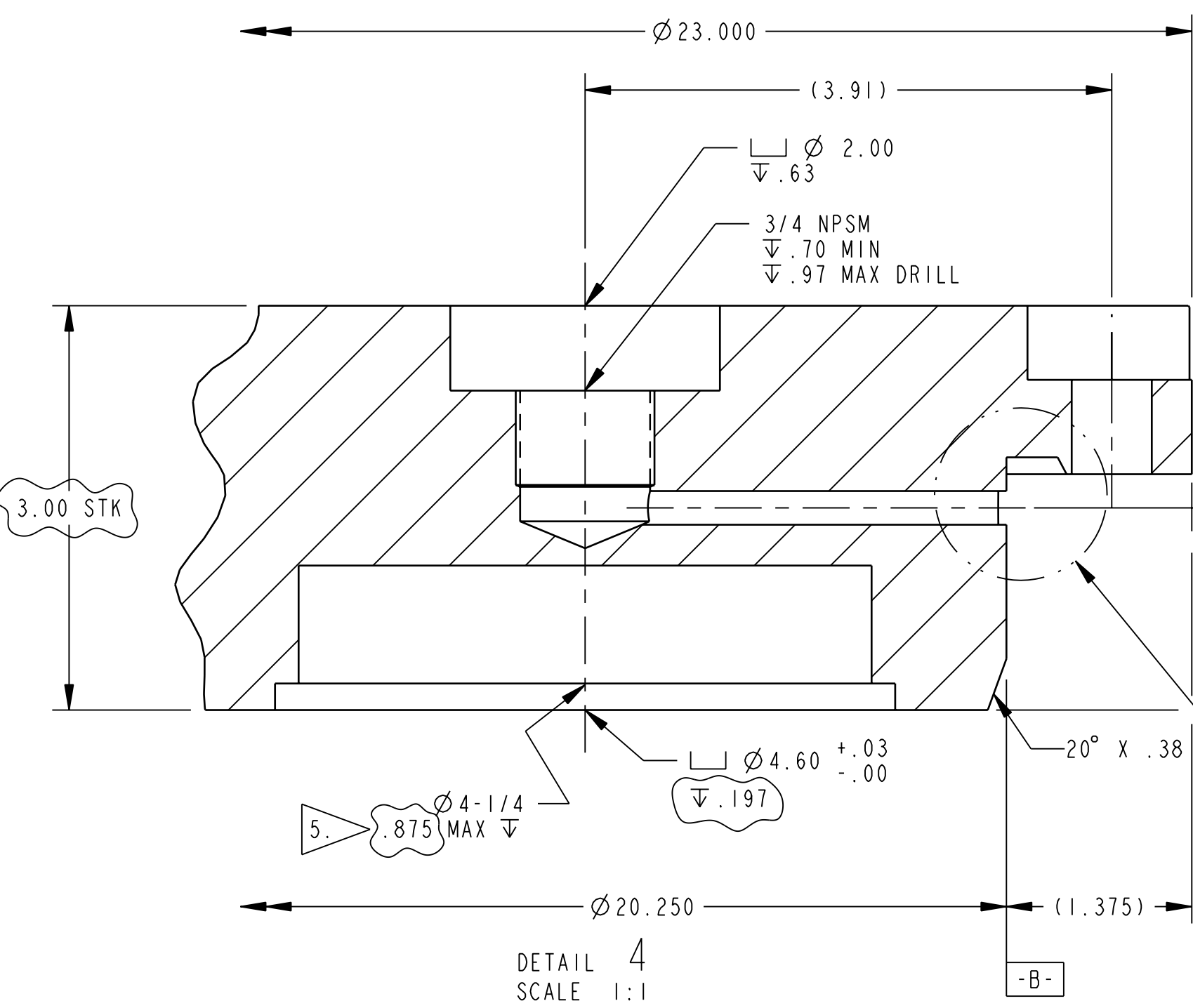
SECTION G-G SCALE 1:1



SECTION F-F LID ASSEMBLY



DETAIL 6 SCALE 2:1



DETAIL 4 SCALE 1:1

RELEASE AUTHORIZATION
PROTOTYPE FABRICATION ONLY

INDEX CODE NUMBER				
SYSTEM	WBE	DWG TYPE	CL	VENDOR
PT03	165	01300	44	240

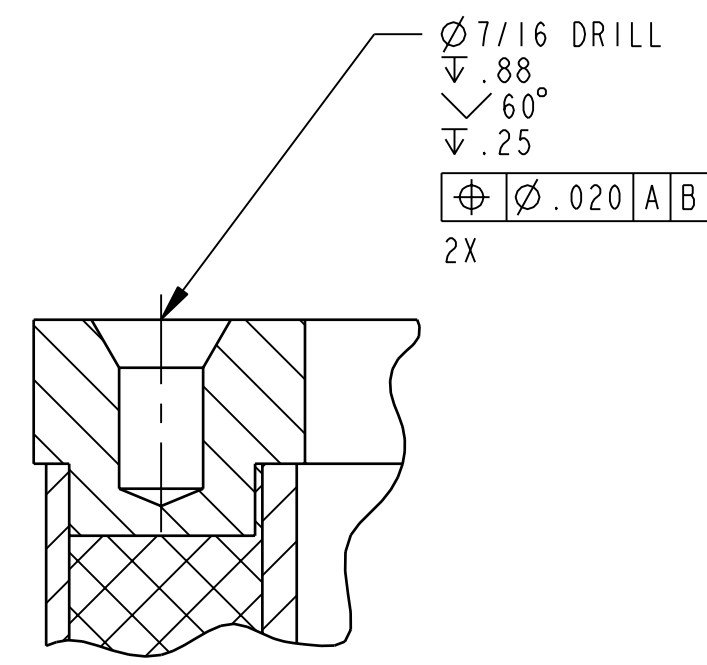
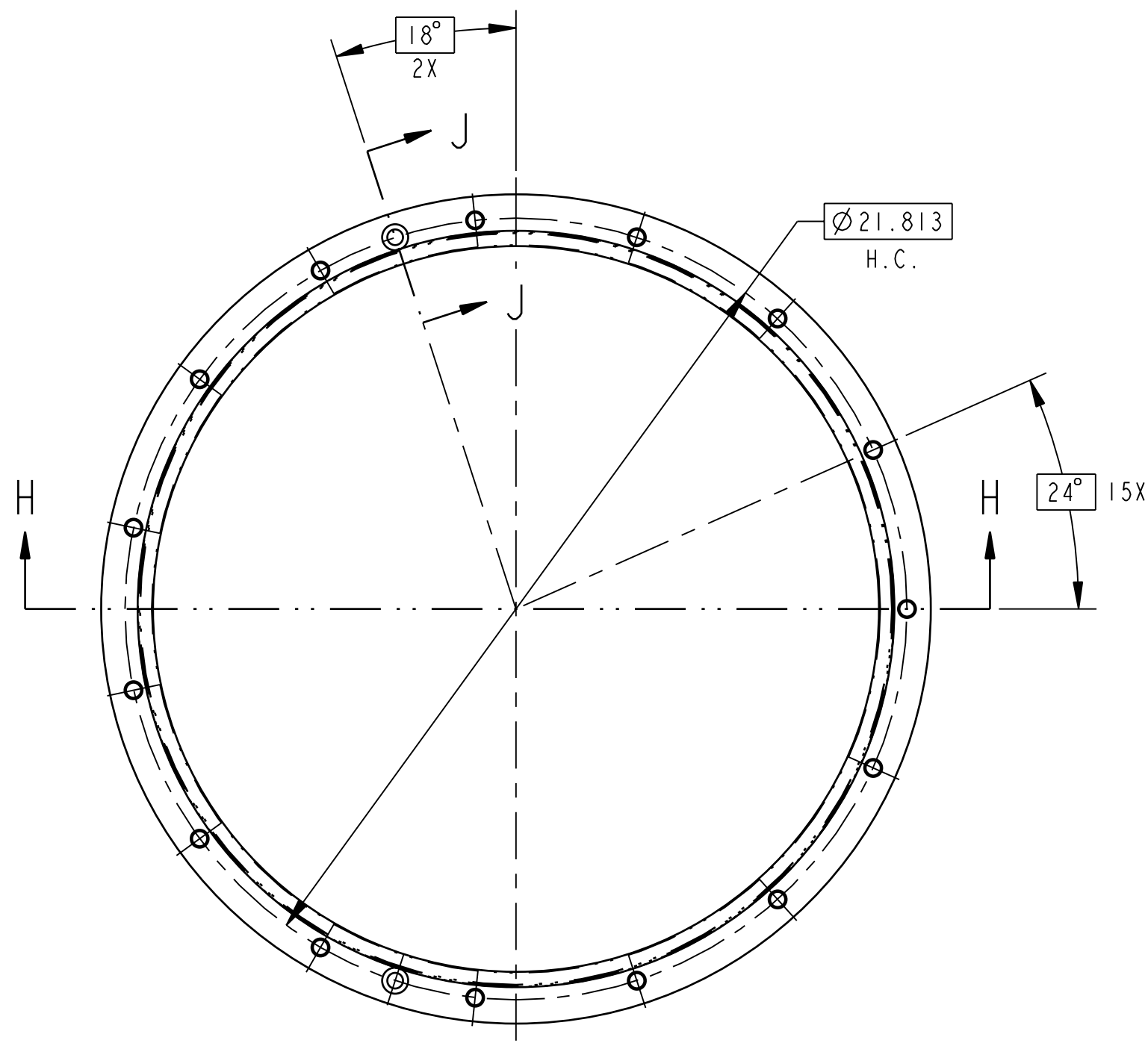
DIM. IN INCHES U.N.O.	SFTY: N/A
[] DENOTES mm U.N.O.	APPD: N/A
UNLESS OTHERWISE SPECIFIED TOLERANCES	DM: BOB BEEMAN 8/13/07
2 PL DEC 3 PL DEC ANGLES 125	DOE: N/A
FRACTIONS: ±1/16	CAD SOURCE
	PRO/ENGINEER

NOTES						
15.	TIGHTEN CLOSURE BOLTS (ITEM 17) TO 85±10 LB-FT TORQUE DURING FINAL ASSEMBLY.					
16.	IT IS RECOMMENDED THAT SEAL (ITEM 7) BE ONE-PIECE CONSTRUCTION AND INSTALLED WITHOUT STRETCHING.					
17.	FABRICATION OPTION: CHAMFER 60° X .130 (FROM HORIZONTAL) LEAD-IN TO AID IN ASSEMBLY.					

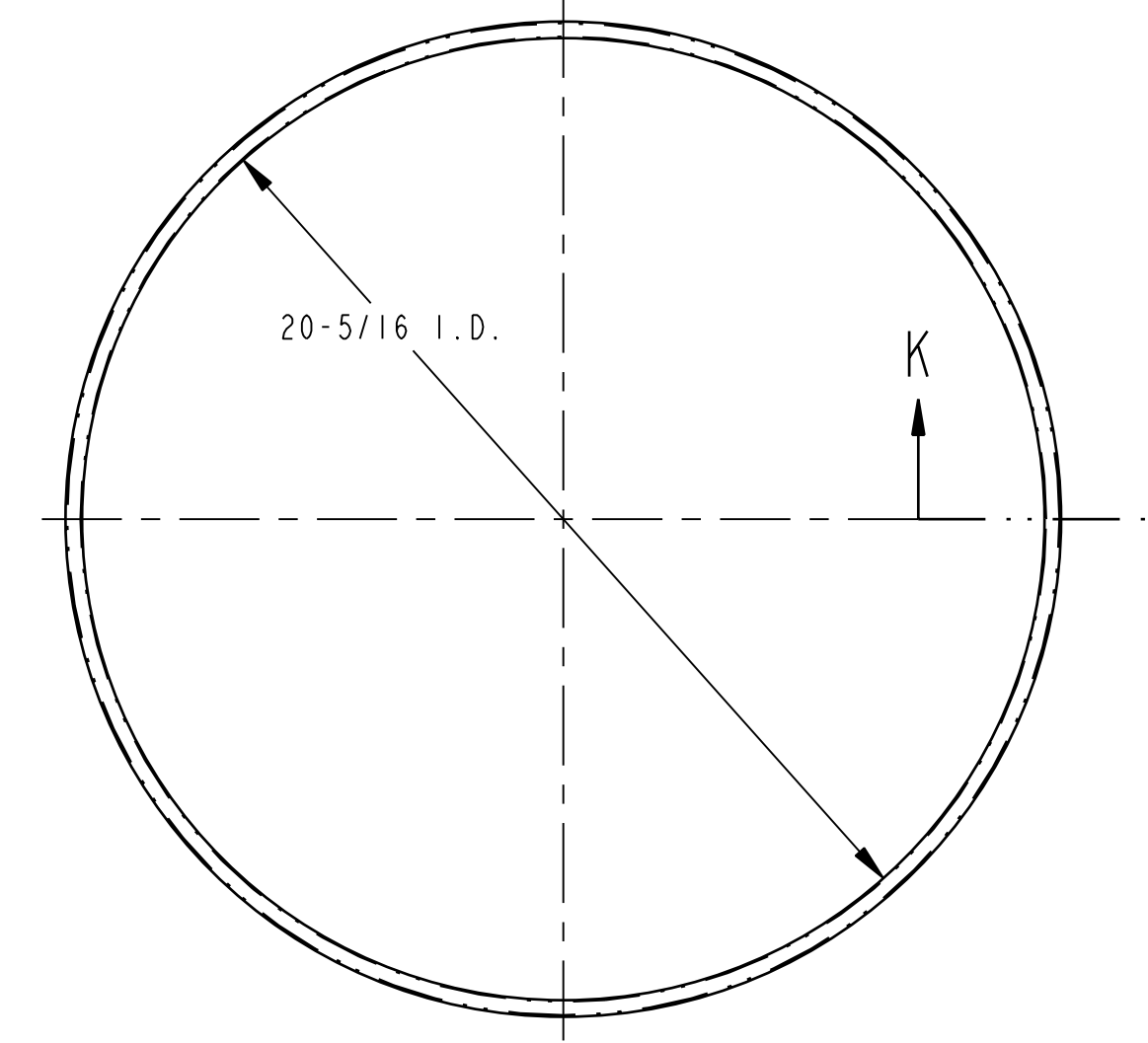
A	REVISED PER ADD. #1	JMN	BAD	TD	BB	11834	N/A
REV	ISSUE DESCRIPTION	DFTR	CHKR	COG	DFTG MGR	ECO	PWR
		DATE	DATE	DATE	DATE		

THIS DRAWING CREATED BY ENGINEERING CHANGE ORDER (ECO): 11834 PWR: N/A
 DFTR: J.M. NEVAREZ 7/18/07
 CHKR: B. DAY FOR RAJ 8/9/07
 COG: ANTHONY DONNER 8/9/07
 CM: TODD SELLMER 8/13/07
 QA: BRUCE G. FAULK 8/13/07

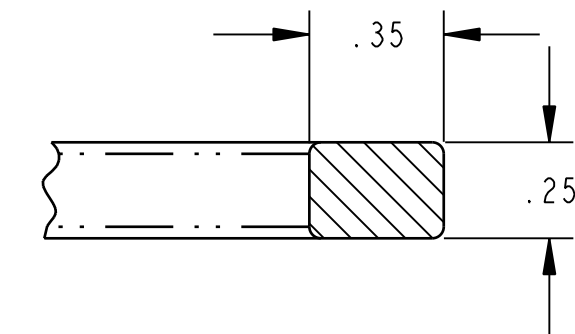
U.S. DEPARTMENT OF ENERGY	
Washington TRU Solutions LLC	
Waste Isolation Pilot Plant	
TITLE	
SHIELDED CONTAINER ASSEMBLY LID	
SIZE SYS	DWG NO
D PT03	165-F-026-W2
SCALE: 1:4	INTERPRET DWG PER ANSI Y14
	THIS DRAWING TAKEN FROM: N/A
	VENDOR: N/A



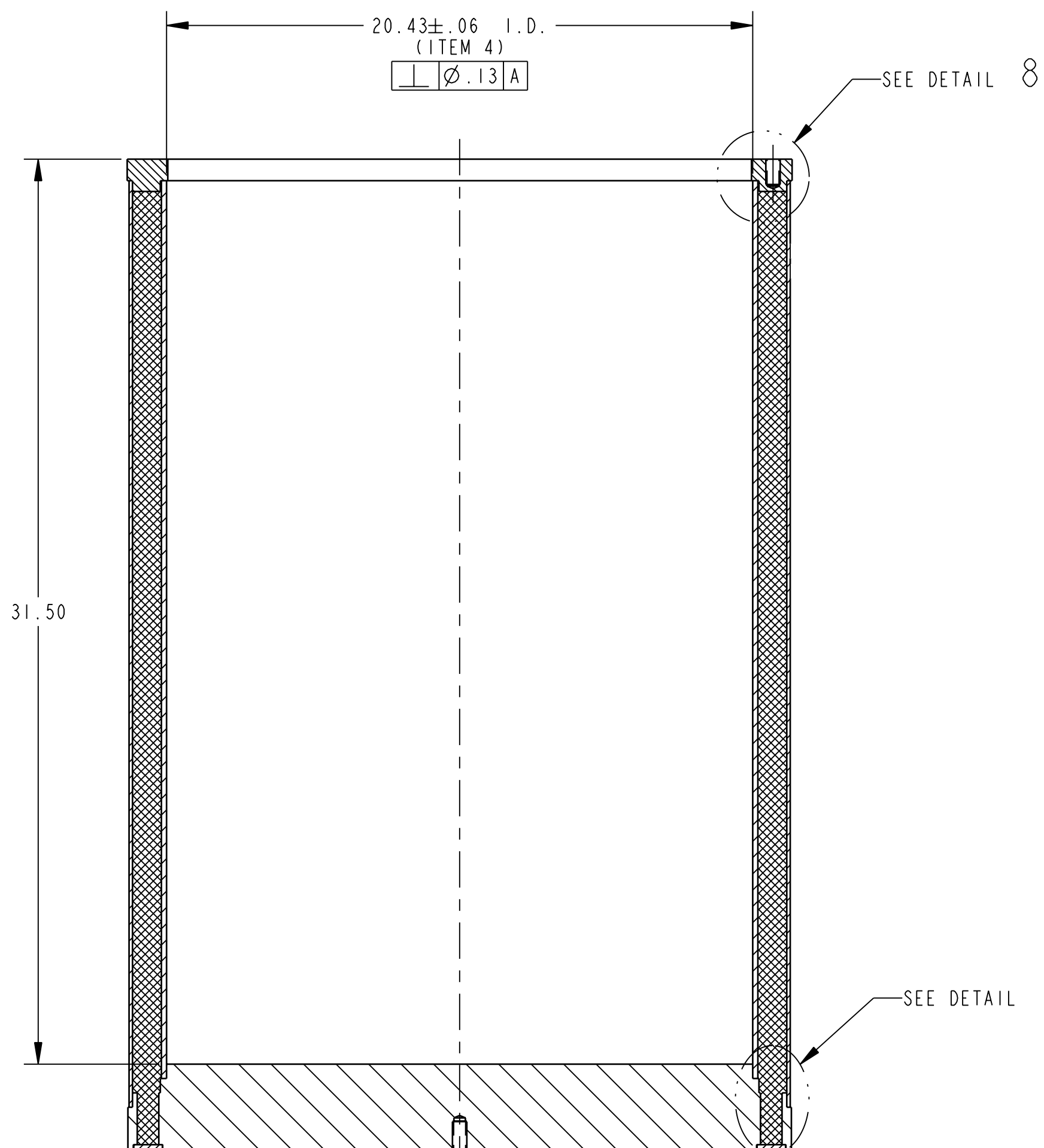
SECTION J-J
SCALE 1:1



16 (7) SEAL
SCALE 1:4

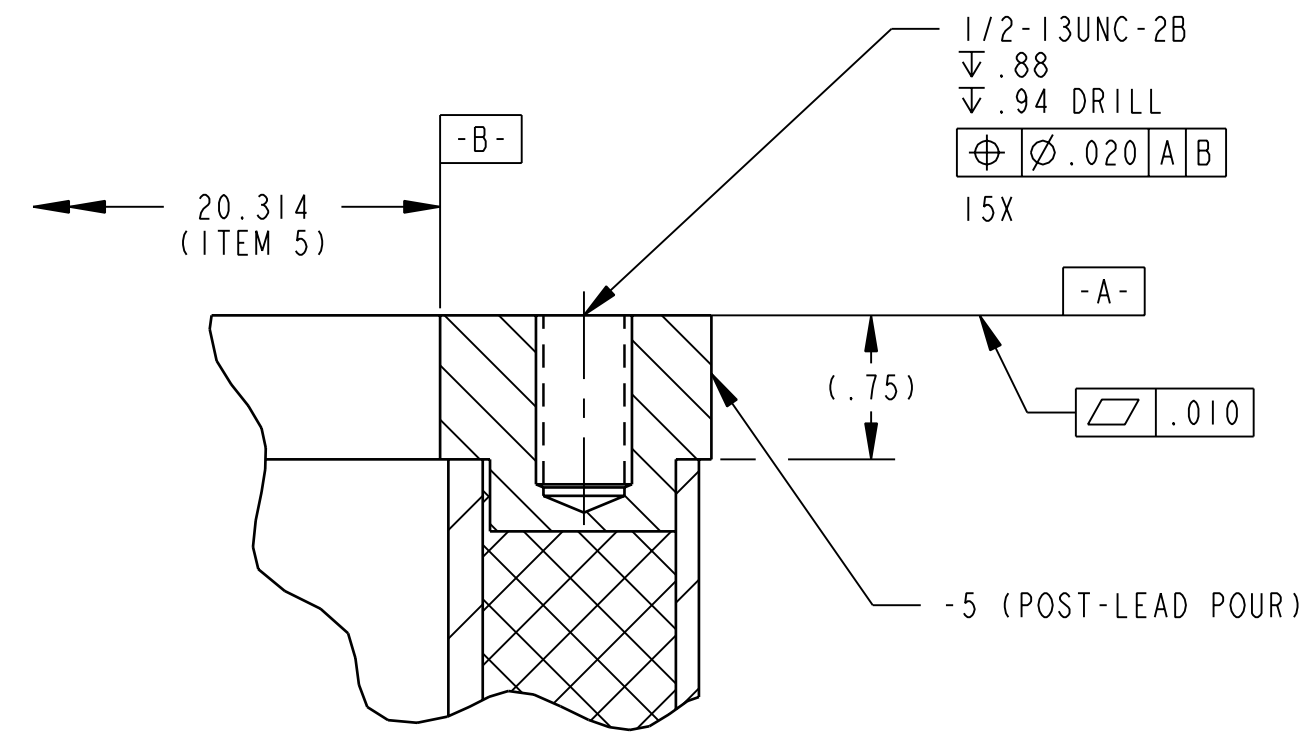


SECTION K-K
SCALE 2:1

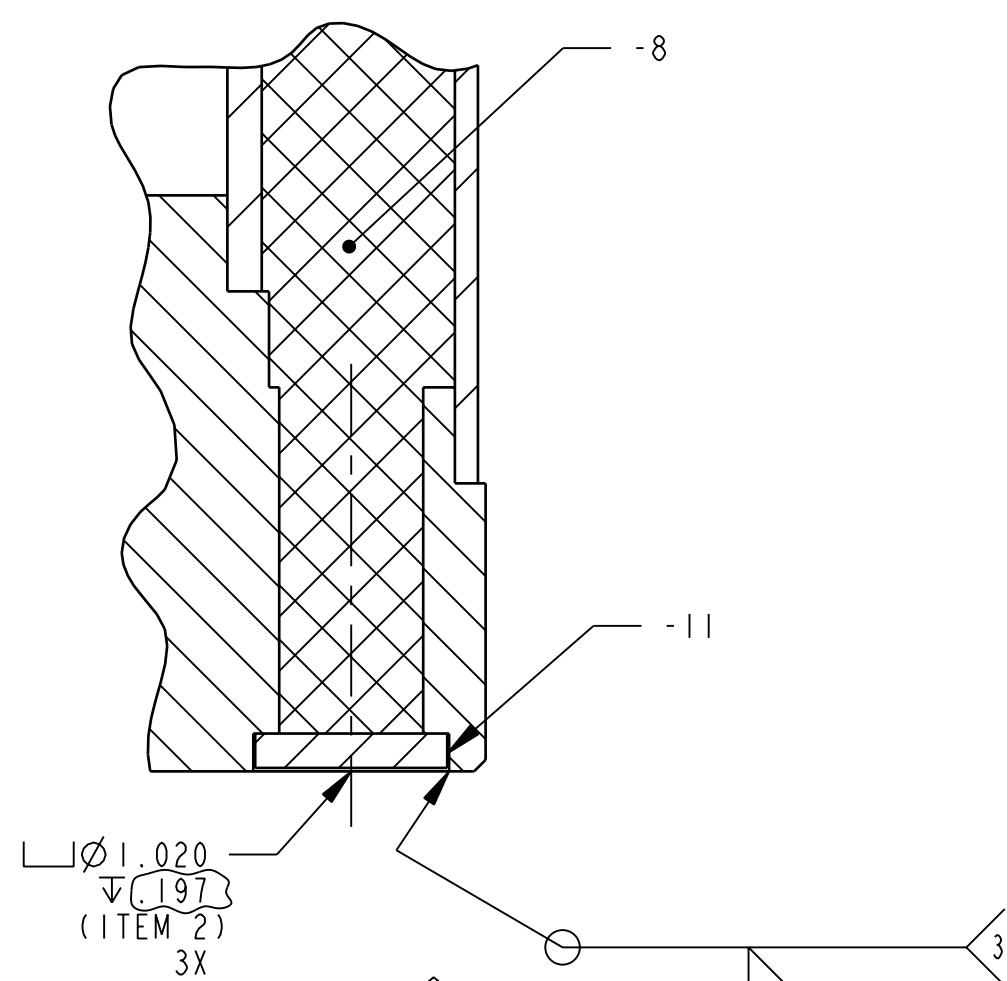


SECTION H-H

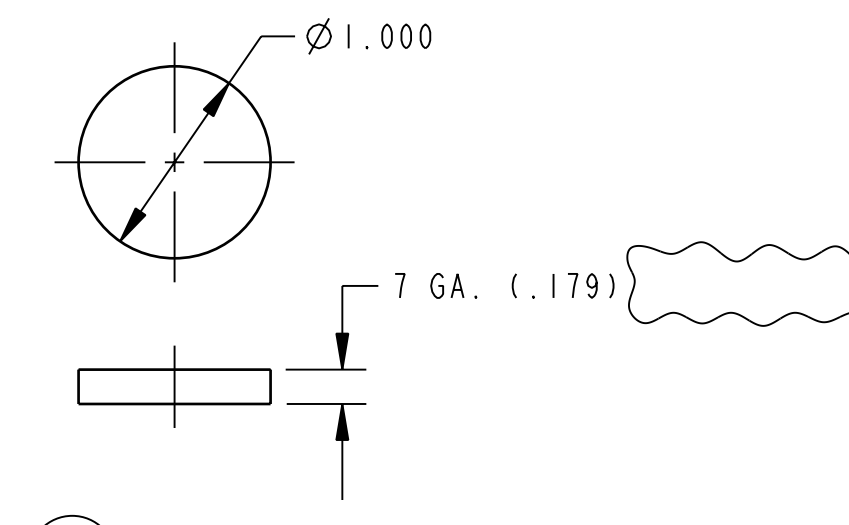
14 BODY, (POST-LEAD POUR)



DETAIL 8
SCALE 1:1



DETAIL 9
SCALE 1:1



11 PLUG
SCALE 1:1

RELEASE AUTHORIZATION
PROTOTYPE FABRICATION ONLY

INDEX CODE NUMBER				
SYSTEM	WBE	DWG TYPE	CL	VENDOR
PT03	165	01300	44	240

DIM. IN INCHES U.N.O.	SFTY: N/A
[] DENOTES mm U.N.O.	APPD: N/A
UNLESS OTHERWISE SPECIFIED TOLERANCES	APPD: N/A
2 PL DEC 3 PL DEC ANGLES 125	DM: BOB BEEMAN 8/13/07
±.03 ±.010 ±.5°	DOE: N/A
FRACTIONS: ±1/16	CAD SOURCE
	PRO/ENGINEER

A	REVISED PER ADD. #1	JMN	BAD	TD	BB	11834	N/A
REV	ISSUE DESCRIPTION	DFTR	CHKR	COG	DFTG MGR	ECO	PWR
		DATE	DATE	DATE	DATE		

THIS DRAWING CREATED BY ENGINEERING CHANGE ORDER (ECO): 11834 PWR: N/A

DFTR: J.M.NEVAZ 7/18/07
CHKR: B.DAY FOR RAJ 8/9/07
COG: ANTHONY DONNER 8/9/07
CM: TODD SELLMER 8/13/07
QA: BRUCE G. FAULK 8/13/07

U.S. DEPARTMENT OF ENERGY

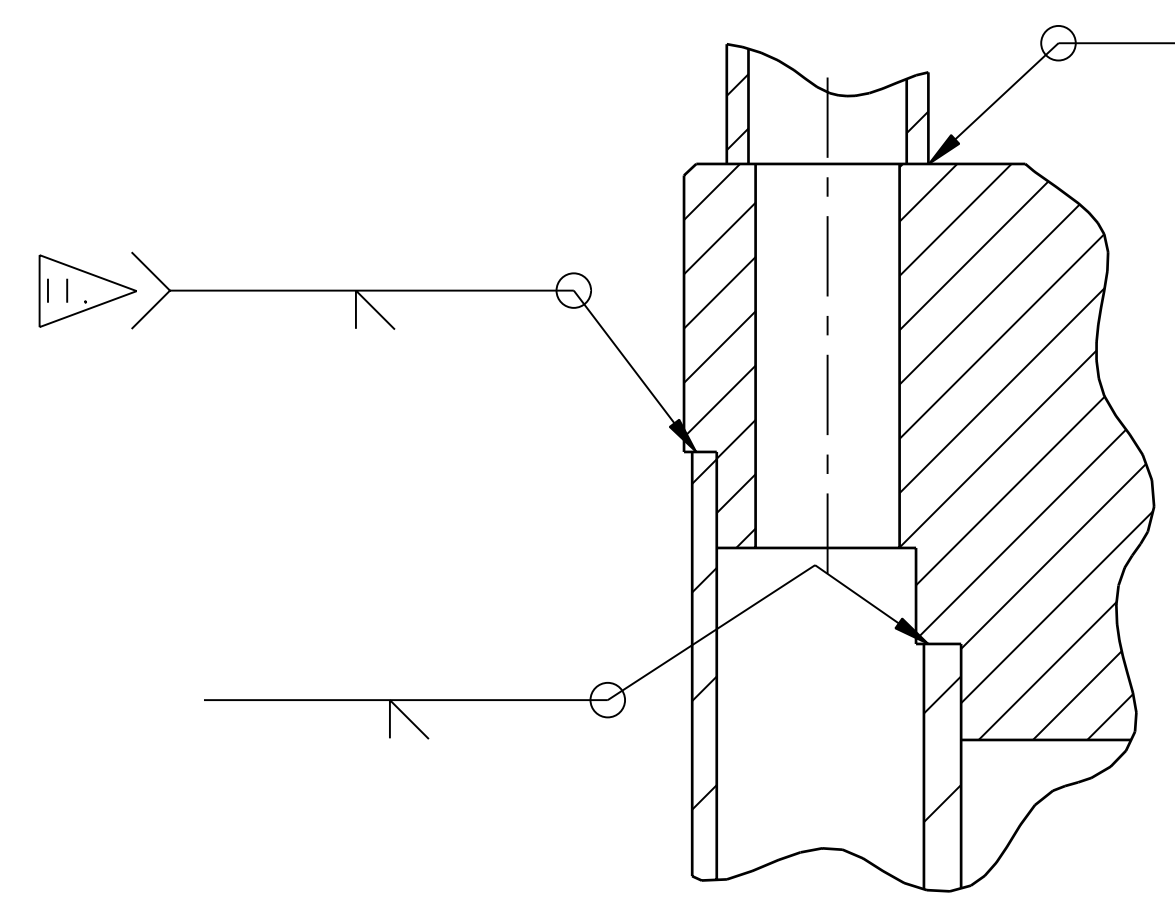
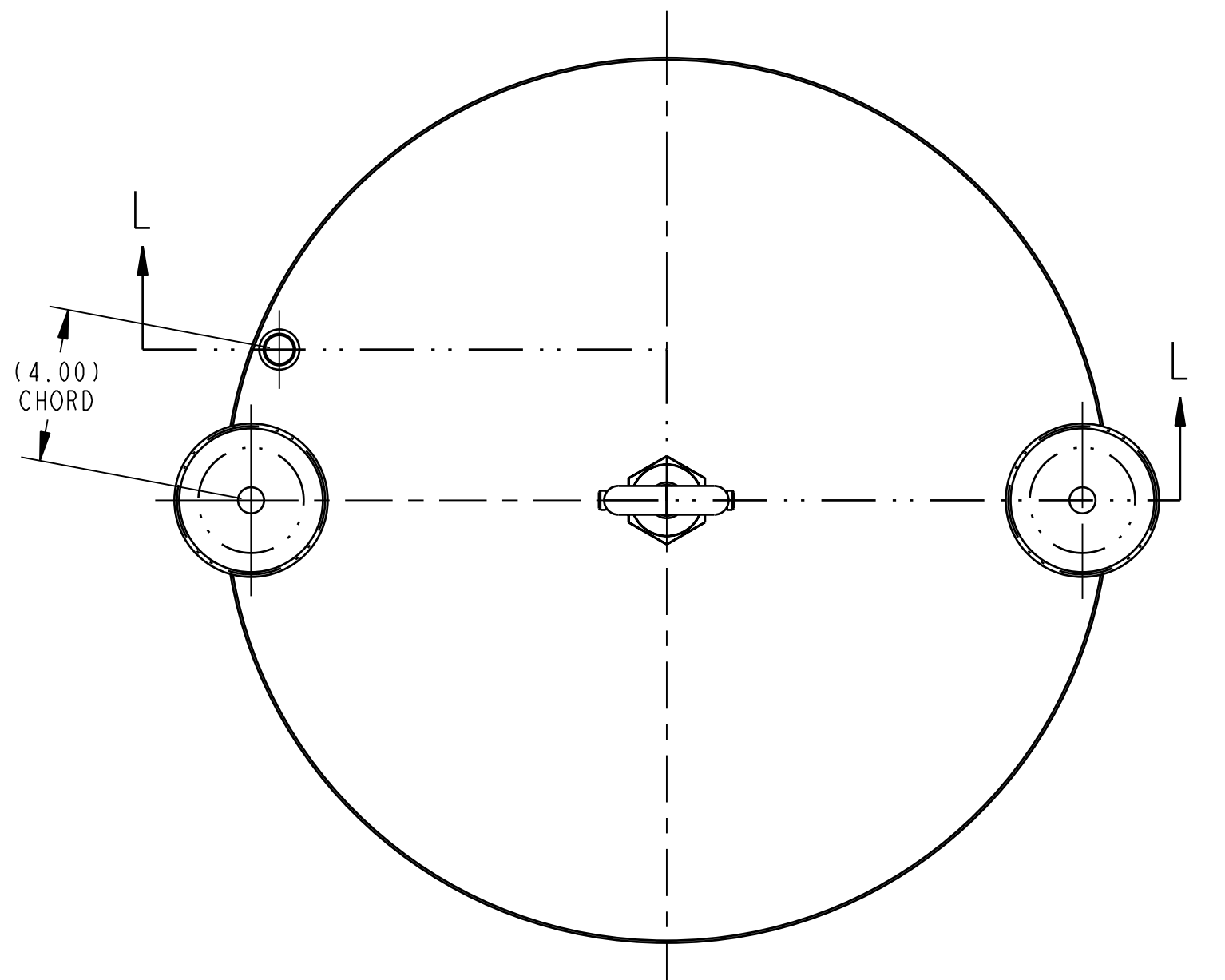


Waste Isolation Pilot Plant
TITLE

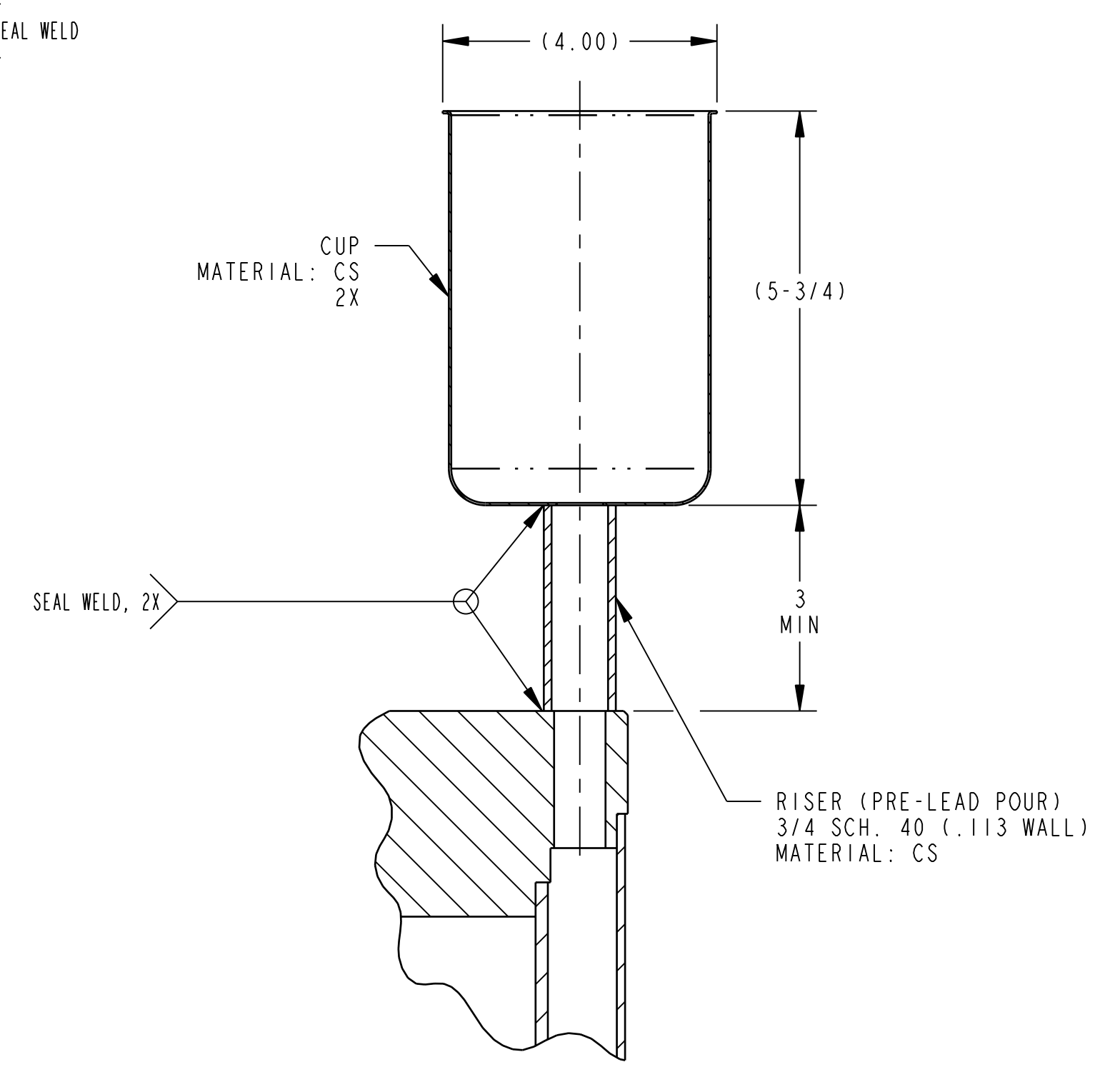
SHIELDED CONTAINER ASSEMBLY
BODY (POST-LEAD POUR)

SIZE SYS	DWG NO	REV
D PT03	165-F-026-W3	A
SCALE: 1:4	INTERPRET DWG PER ANSI Y14	

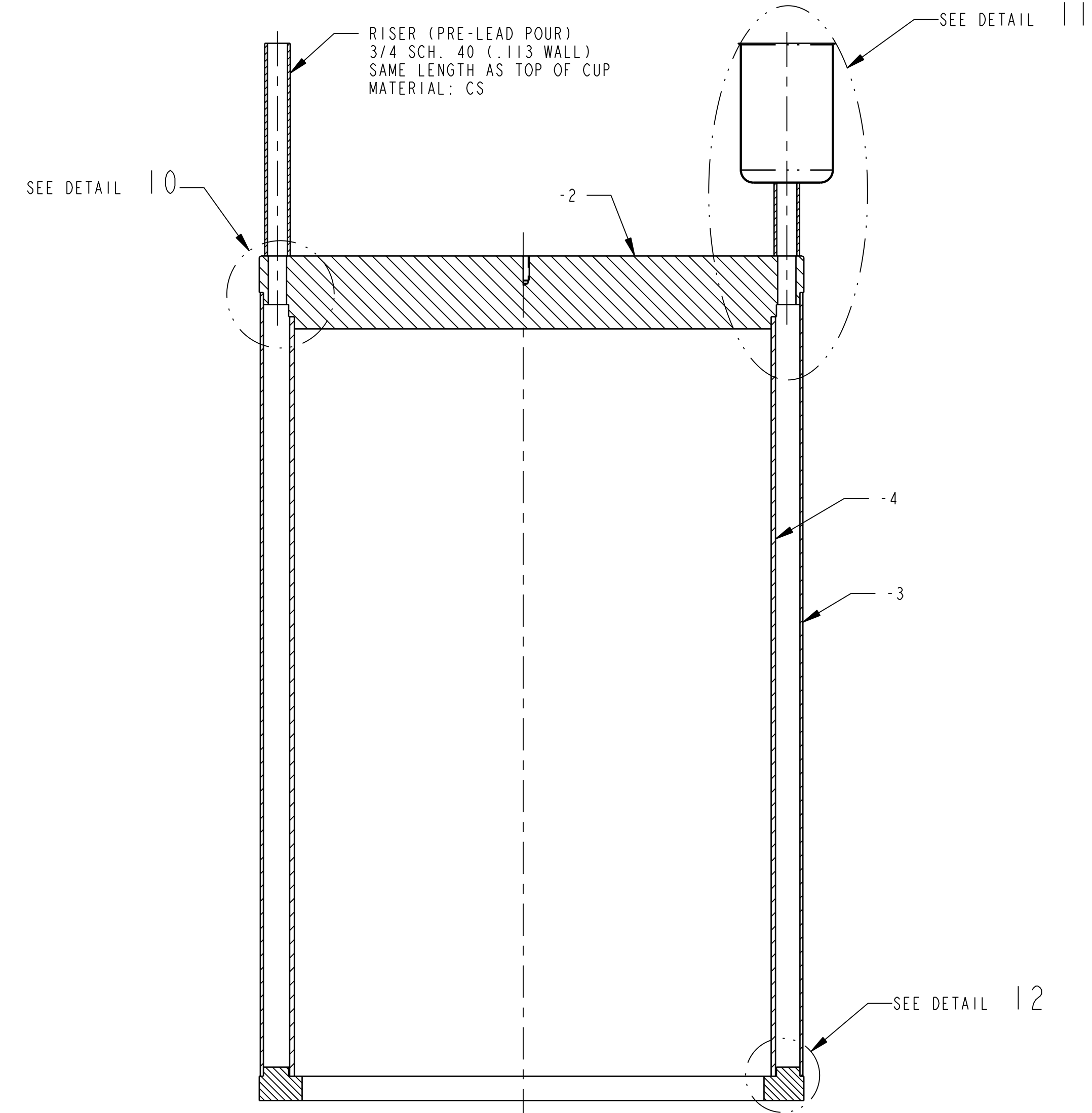
THIS DRAWING TAKEN FROM: N/A
VENDOR: N/A



DETAIL 10
SCALE 1:1

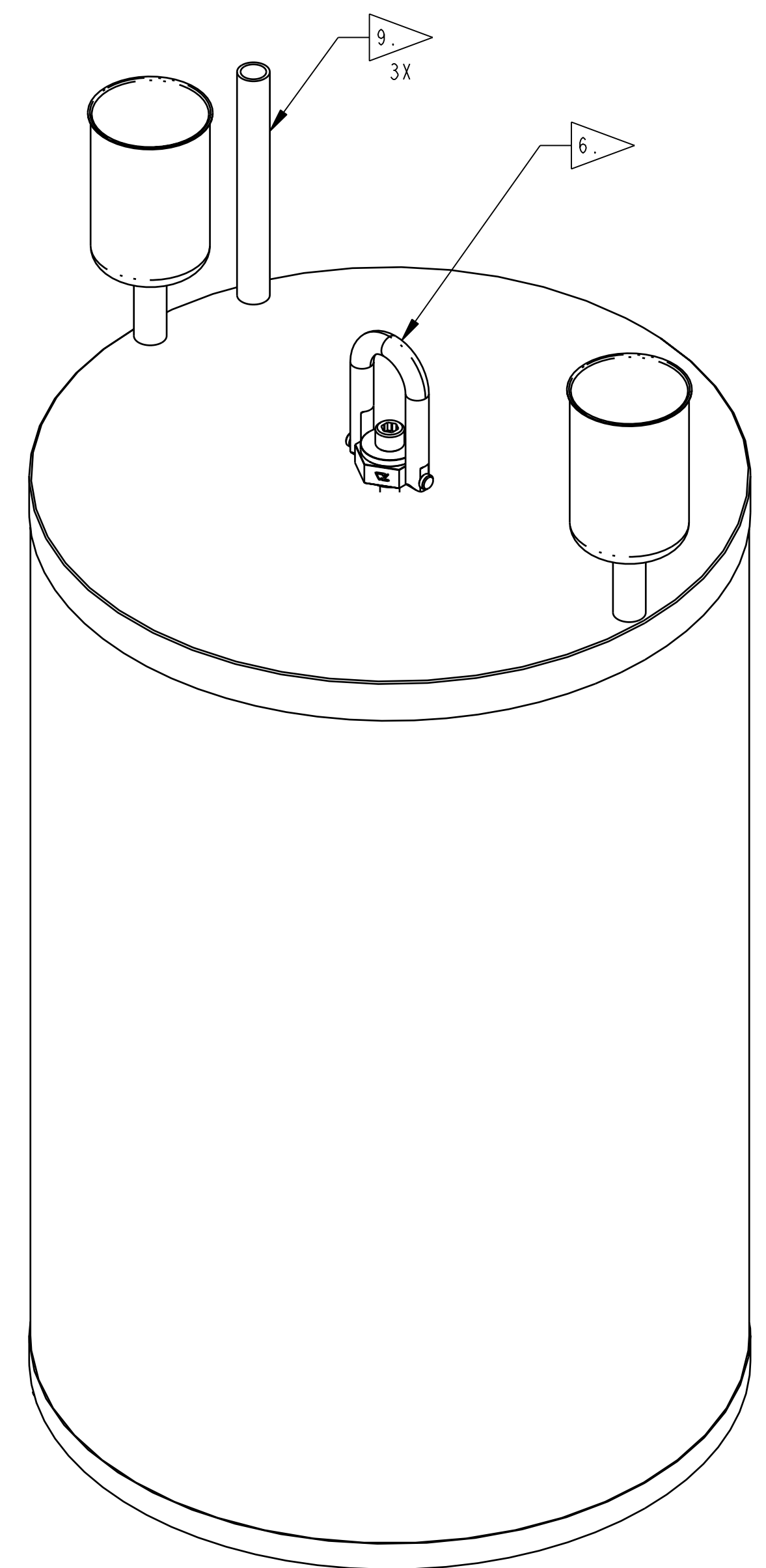


DETAIL 11
SCALE 1:2

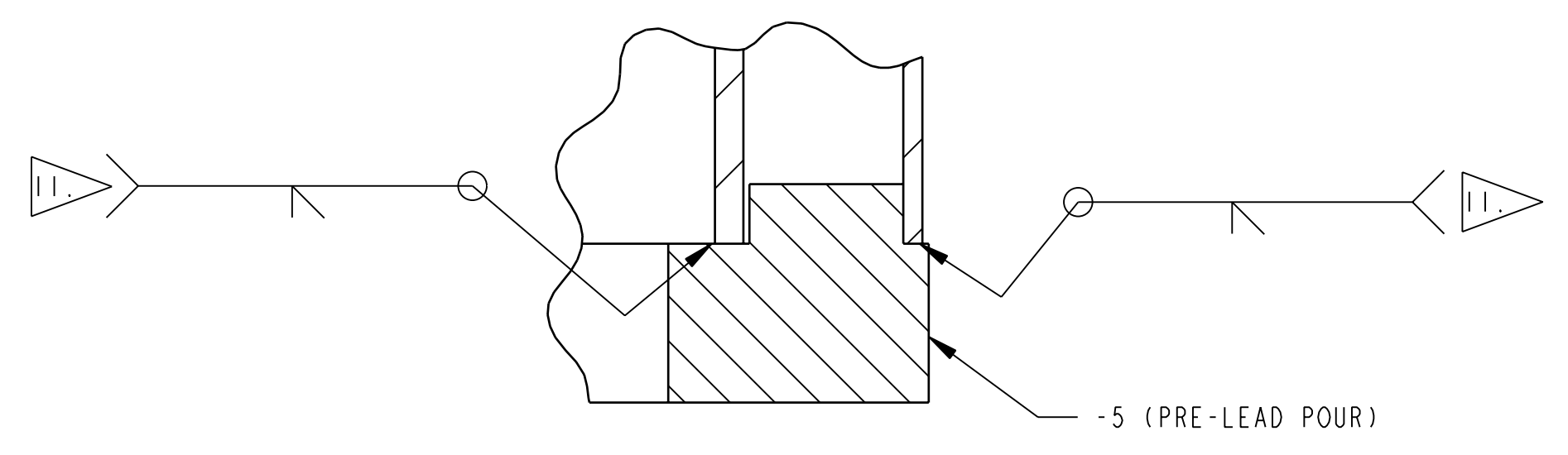


SECTION L-L

7 BODY, (PRE-LEAD POUR)
(HOIST RING REMOVED FOR CLARITY)



7 REFERENCE VIEW



DETAIL 12
SCALE 1:1

RELEASE AUTHORIZATION
PROTOTYPE FABRICATION ONLY

INDEX CODE NUMBER				
SYSTEM	WBE	DWG TYPE	CL	VENDOR
PT03	165	01300	44	240

DIM. IN INCHES U.N.O.	SFTY: N/A
[] DENOTES mm U.N.O.	APPD: N/A
UNLESS OTHERWISE SPECIFIED TOLERANCES	APPD: N/A
2 PL DEC 3 PL DEC ANGLES 125	DM: BOB BEEMAN 8/13/07
±.03 ±.010 ±.5°	DOE: N/A
FRACTIONS: ±1/16	CAD SOURCE
	PRO/ENGINEER

REV	ISSUE DESCRIPTION	DFTR	CHKR	COG	DFTG MGR	ECO	PWR
A	REVISED PER ADD. #1	JMN	BAD	TD	BB	11834	N/A
		DATE	DATE	DATE	DATE		
		9/13/07	9/14/07	9/14/07	9/14/07		

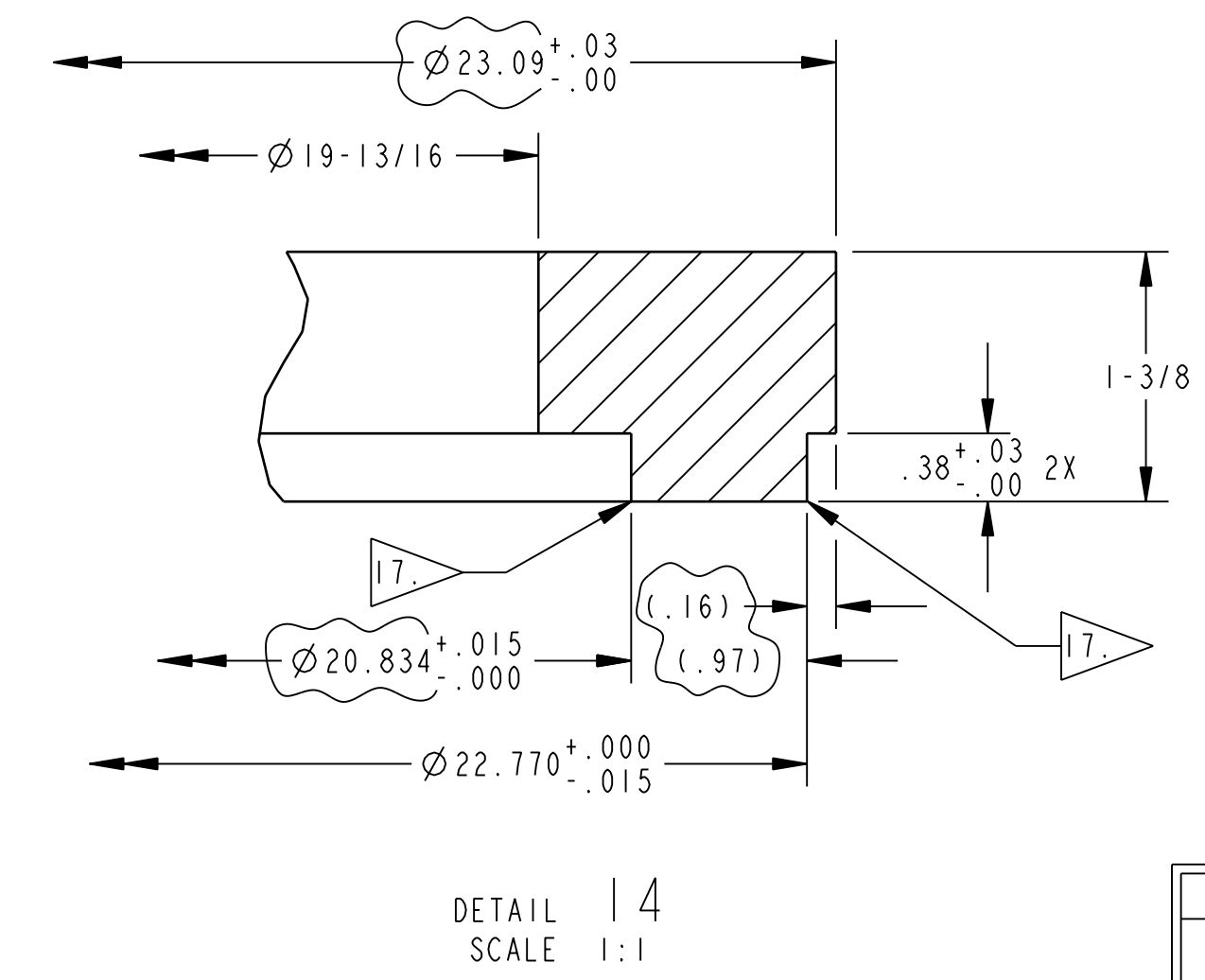
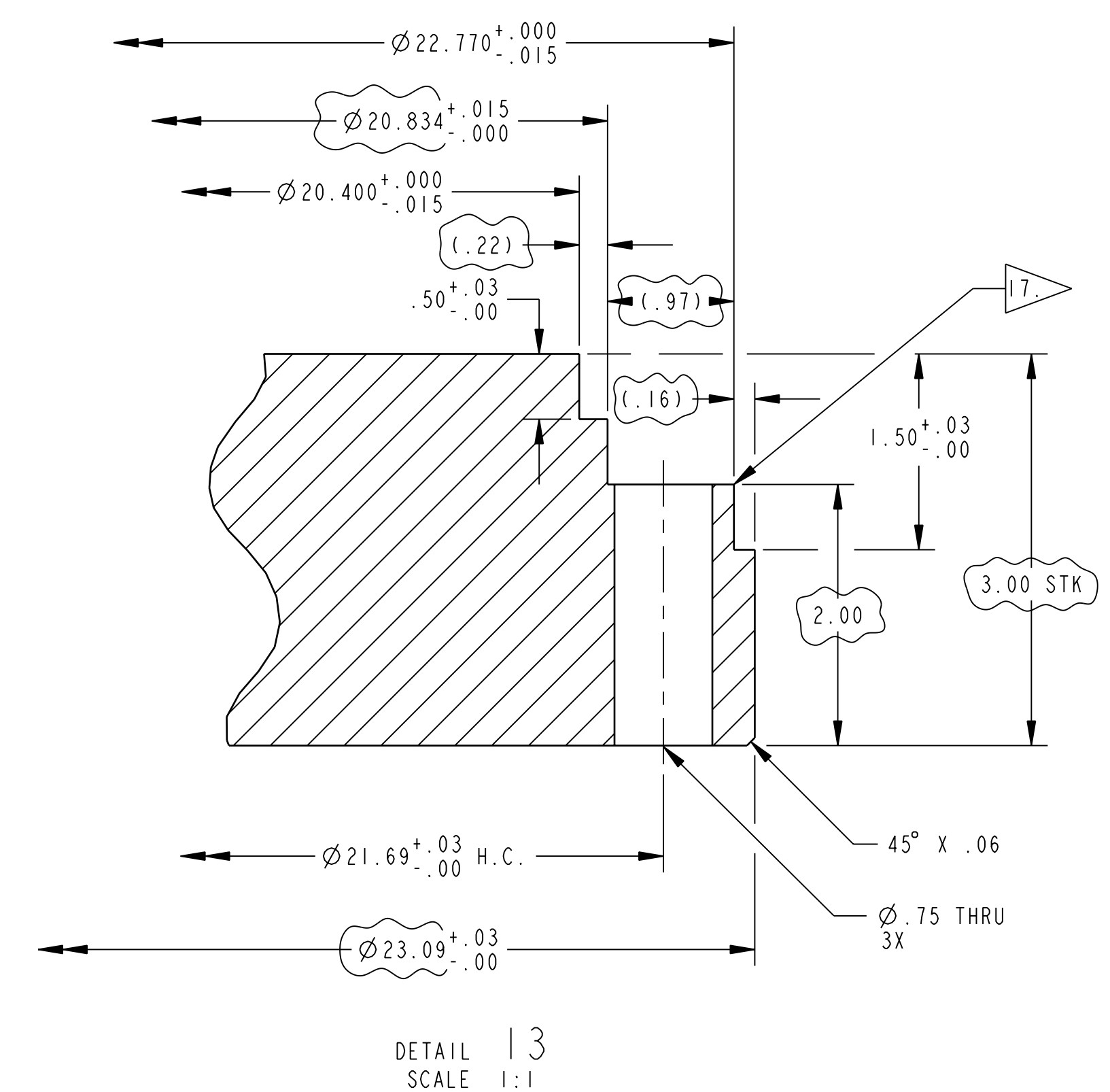
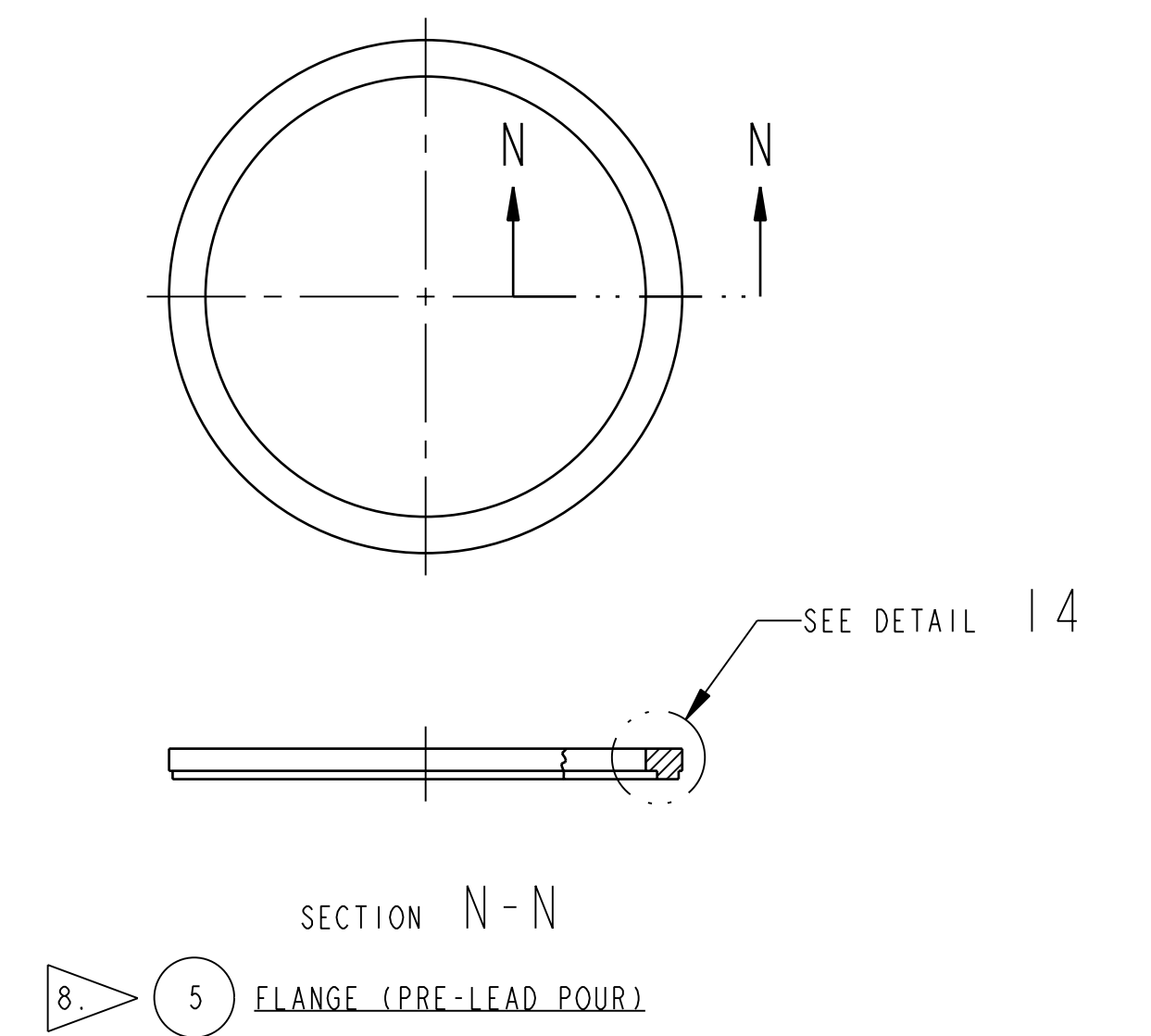
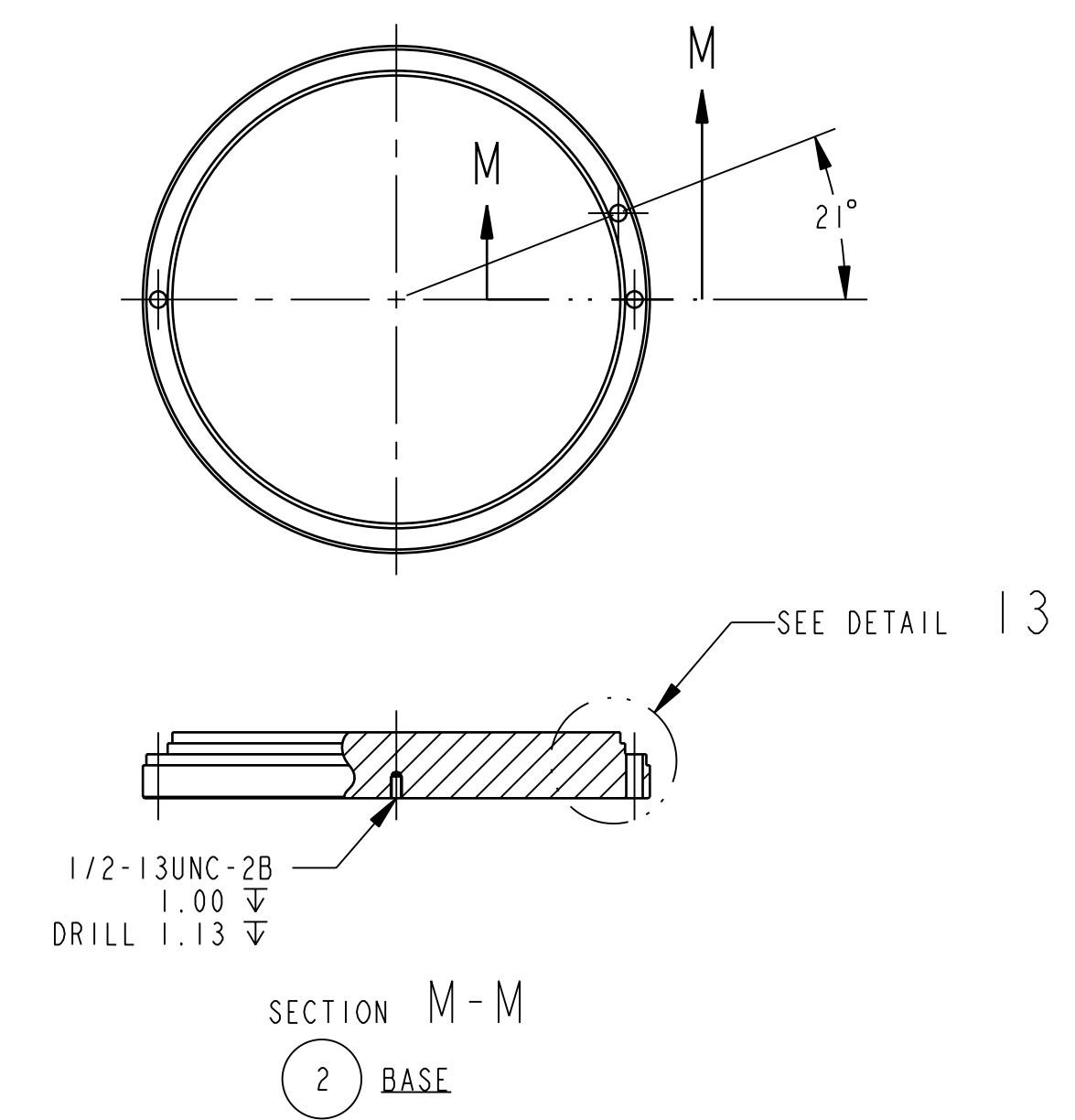
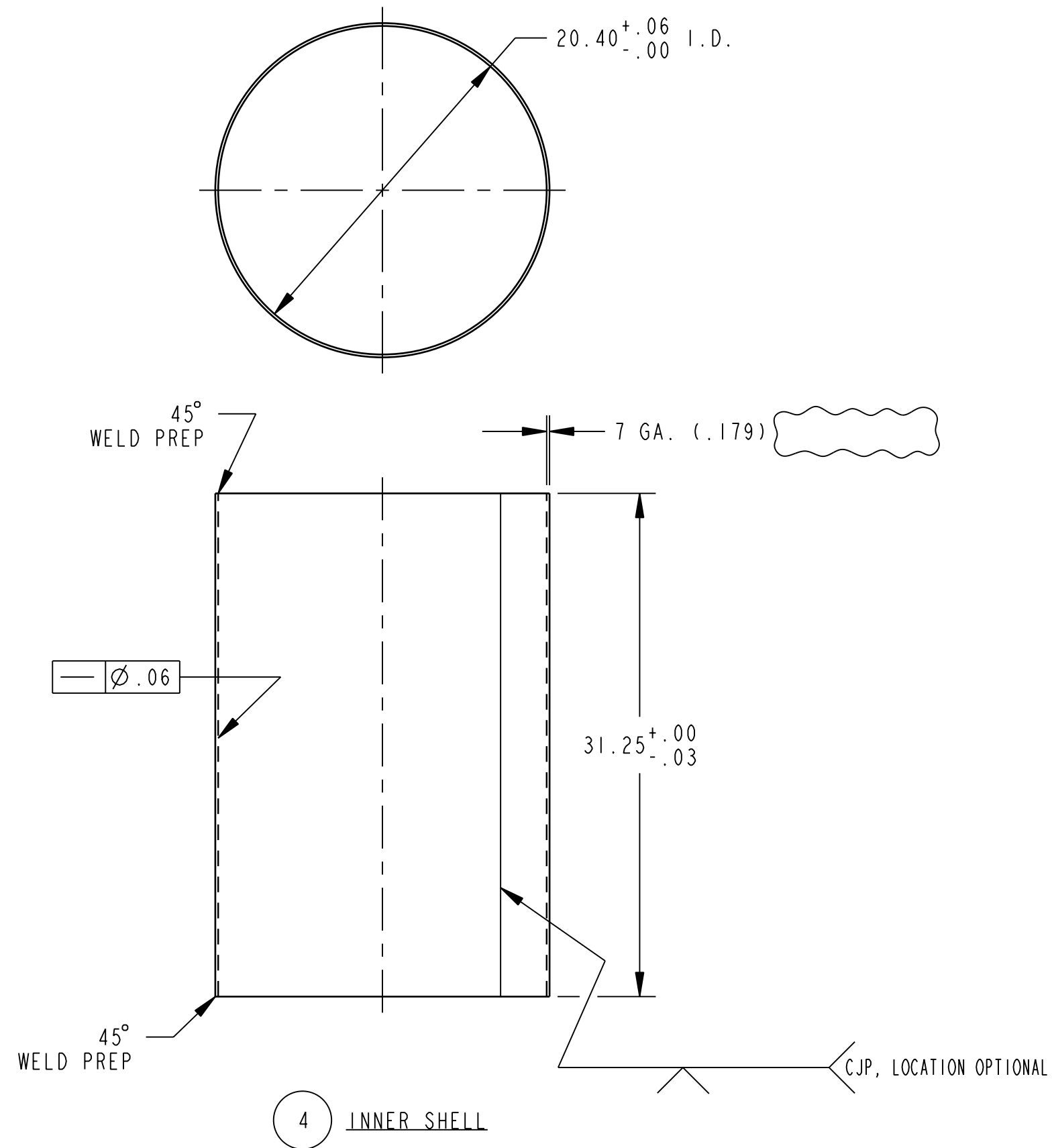
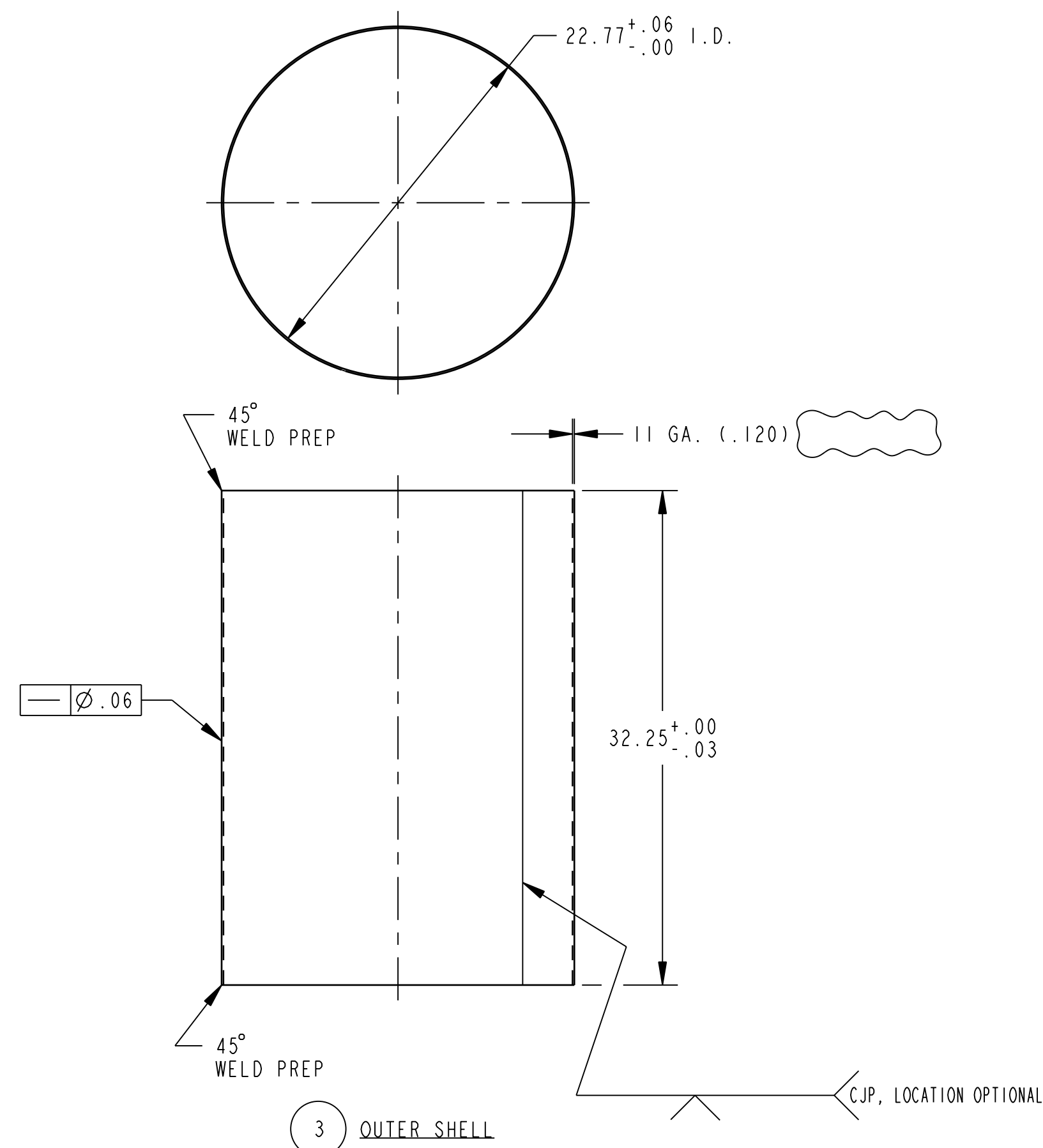
THIS DRAWING CREATED BY ENGINEERING CHANGE ORDER (ECO): 11834 PWR: N/A
 DFTR: J.M. NEVAREZ 7/18/07
 CHKR: B. DAY FOR RAJ 8/9/07
 COG: ANTHONY DONNER 8/9/07
 CM: TODD SELLMER 8/13/07
 QA: BRUCE G. FAULK 8/13/07

U.S. DEPARTMENT OF ENERGY
Washington
 TRU Solutions LLC
 Waste Isolation Pilot Plant
 Corlsbod, NM

TITLE
**SHIELDED CONTAINER ASSEMBLY
 BODY (PRE-LEAD POUR)**
 SIZE SYS DWG NO
D PT03 165-F-026-W4
 SCALE: 1:4 INTERPRET DWG PER ANSI Y14
 THIS DRAWING TAKEN FROM: N/A
 VENDOR: N/A

8 7 6 5 4 3 2

D
C
B
A



RELEASE AUTHORIZATION
PROTOTYPE FABRICATION ONLY

INDEX CODE NUMBER				
SYSTEM	WBE	DWG TYPE	CL	VENDOR
PT03	165	01300	44	240

DIM. IN INCHES U.N.O.	SFTY: N/A
[] DENOTES mm U.N.O.	APPD: N/A
UNLESS OTHERWISE SPECIFIED TOLERANCES	DM: BOB BEEMAN 8/13/07
2 PL DEC 3 PL DEC ANGLES 125	DOE: N/A
±.03 ±.010 ±.5°	CAD SOURCE
FRACTIONS: ±1/16	PRO/ENGINEER

REV	ISSUE DESCRIPTION	DFTR	CHKR	COG	DFTG MGR	ECO	PWR
A	REVISED PER ADD. #1	JMN	BAD	TD	BB	11834	N/A
		9/13/07	9/14/07	9/14/07	9/14/07		
THIS DRAWING CREATED BY ENGINEERING CHANGE ORDER (ECO): 11834 PWR: N/A							
DFTR: J.M.NEVAZ 7/18/07							
CHKR: B.DAY FOR RAJ 8/9/07							
COG: ANTHONY DONNER 8/9/07							
CM: TODD SELLMER 8/13/07							
QA: BRUCE G. FAULK 8/13/07							
U.S. DEPARTMENT OF ENERGY							
Washington TRU Solutions LLC							
Waste Isolation Pilot Plant							
CORLISBOD, NM							
SHIELDED CONTAINER ASSEMBLY BODY PARTS (PRE-LEAD POUR)							
SIZE	SYS	DWG NO	REV				
D	PT03	165-F-026-W5	A				
SCALE: 1:8 INTERPRET DWG PER ANSI Y14							
THIS DRAWING TAKEN FROM: N/A							
VENDOR: N/A							

8 7 6 5 4 3 2