



Implementing a National Preparedness and Response Mapping Application

Freshwater Spills Symposium 2004
New Orleans, Louisiana

GLC

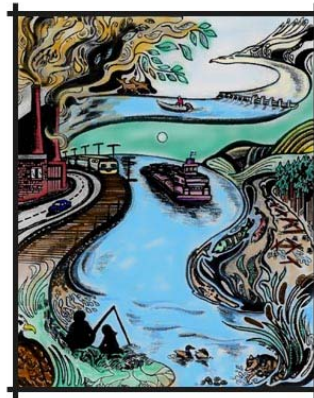
- Binational agency representing states/provinces
- Formed 1955 under state/federal law
- Promotes informed use, management and protection of the water and related natural resources
- Issues: Resource Management, Environmental Protection, Transportation and Sustainable Economic Development
- Functions: Information Sharing, Policy R&D, and Advocacy
- “Information and research broker” focusing on hydrologic, not geo-political boundaries

Altruism

Great Lakes Spill Protection Initiative



Inland Sensitivity Atlas



Freshwater Spills Information Clearinghouse



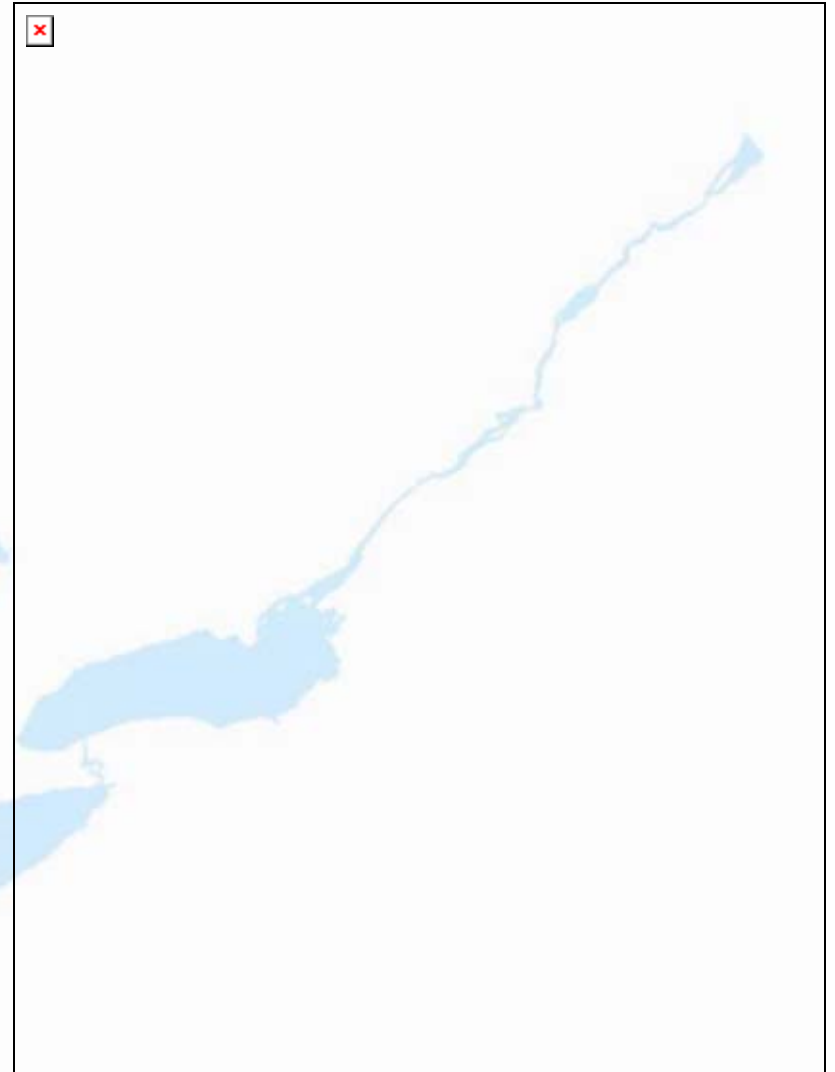
Inland Sensitivity Atlas

Standardized
symbology and
definitions.



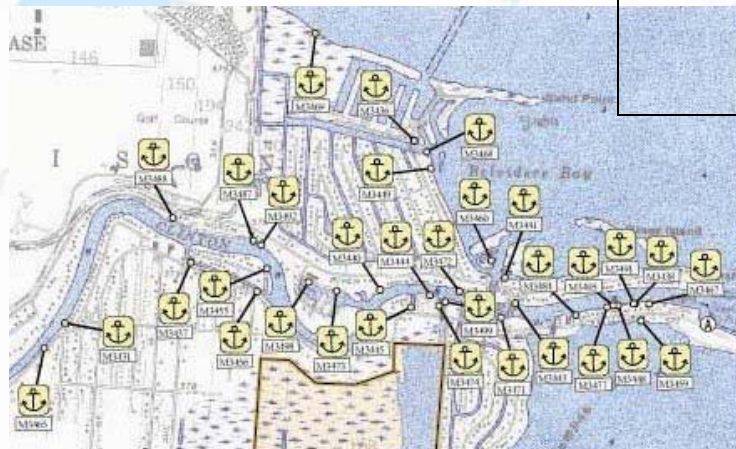
Inland Sensitivity Atlas

Detailed data sets
tied to each mapped
feature.



Inland Sensitivity Atlas

Maps are just the plain and simple way to present complex data sets in space and time.



Need

What do we need to answer at a response?

- Location of the incident
- Potential human/environmental receptors
- Our ability to execute an effective response



**Mapping
Application for
Planning,
Preparedness and
Emergency
Response**

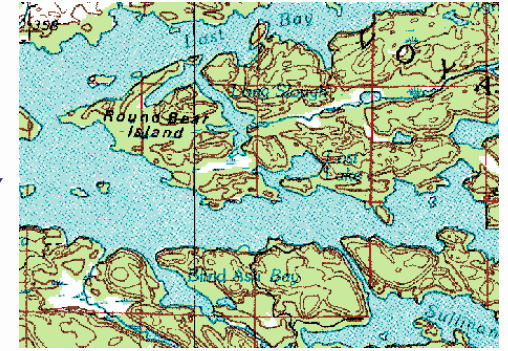


MAPPER

- Minimum essential data elements
- Universal data accuracy
- Standardized format
- Common national data structure
- FGDC-compliant

MAPPER

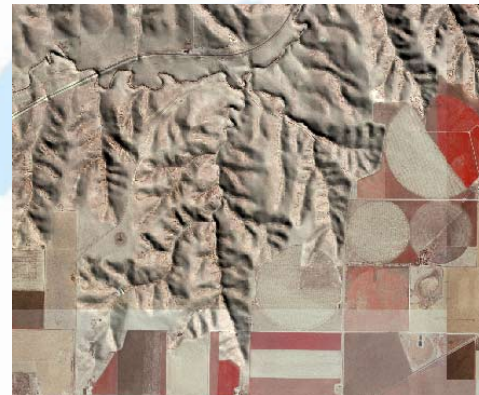
- USGS Topographic Maps



- Aerial Photography



- Raised Relief Maps





MAPPER

MAPPING APPLICATION FOR PREPAREDNESS, PLANNING AND EMERGENCY RESPONSE

TOPOGRAPHIC VIEW

AERIAL PHOTO VIEW

RELIEF MAP VIEW



LOCATE AREA OF INTEREST BY CLICKING ON A STATE ABOVE
OR
PERFORM A USER-DEFINED SEARCH BY LOCATION

CITY		LATITUDE
<input type="text"/>		<input type="text"/>
STATE	ZIP CODE	LONGITUDE
<input type="text"/>	<input type="text"/>	<input type="text"/>
<input type="button" value="Get Map"/>		

MAPPER

MAPPING APPLICATION FOR PREPAREDNESS, PLANNING AND EMERGENCY RESPONSE

TOPOGRAPHIC VIEW **AERIAL PHOTO VIEW** **RELIEF MAP VIEW**

LEGEND

ZOOM (+) **ZOOM** (-)

PAN (Hand icon)

ID (Info icon)

DRAW

BUFFER

TABLE

PRINT

FSIC
ADDITIONAL ONLINE
RESOURCES

NATIONAL WEATHER SERVICE
Local forecast by
"City, St" or zip code
City, St

**LOCATE RELEVANT
AREA CONTINGENCY
PLANS**

MAPPER

MAPPING APPLICATION FOR PREPAREDNESS, PLANNING AND EMERGENCY RESPONSE

TOPOGRAPHIC VIEW **AERIAL PHOTO VIEW** RELIEF MAP VIEW

LEGEND

ZOOM (+)

ZOOM (-)

PAN

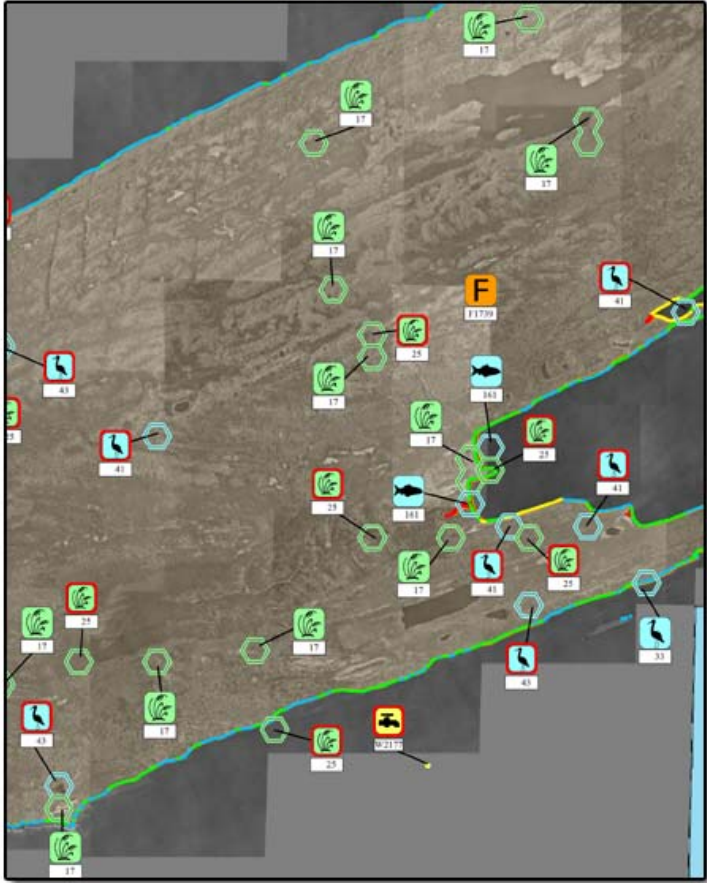
ID (i)

DRAW

BUFFER

TABLE

PRINT



FSIC
ADDITIONAL ONLINE
RESOURCES

NATIONAL WEATHER SERVICE
Local forecast by
"City, St" or zip code
City, St Go

LOCATE RELEVANT
AREA CONTINGENCY
PLANS

The main map area displays an aerial photograph of a terrain with various colored overlays and icons. A blue line runs across the top, and a green line runs across the bottom. Numerous icons are scattered across the map, including green icons with a leaf, red icons with a lightning bolt, blue icons with a fish, and yellow icons with a fire. Some icons have numbers below them, such as 17, 25, 41, and 33. A yellow 'F' icon is also visible. The map is surrounded by a toolbar on the left and a navigation bar at the top.

MAPPER

MAPPING APPLICATION FOR PREPAREDNESS, PLANNING AND EMERGENCY RESPONSE

TOPOGRAPHIC VIEW AERIAL PHOTO VIEW RELIEF MAP VIEW

LEGEND

ZOOM

ZOOM

PAN

ID

DRAW

BUFFER

TABLE

PRINT

FSIC
ADDITIONAL ONLINE
RESOURCES

NATIONAL WEATHER SERVICE
Local forecast by
"City, St" or zip code
City, St Go

LOCATE RELEVANT
AREA CONTINGENCY
PLANS



MAPPER

- Geographic perspective in planning and response
- Unified data presentation
- National data commonality
- “One-stop shopping”
- Remote data accessibility
- Design for non-GIS response audience



MAPPER



Great Lakes
Commission
des Grands Lacs

Eisenhower Corporate Park
2805 S. Industrial Hwy., Suite 100
Ann Arbor, MI 48104-6791
www.glc.org

Thomas Rayburn
Senior Project Manager
Environmental Quality
734-971-9135, ext. #105
734-971-9150 (fax)
tray@glc.org

Ensuring environmental and economic prosperity for the Great Lakes-St. Lawrence region